

University of Groningen

## The active protein-conducting channel of Escherichia coli contains an apolar patch

Bol, Redmar; de Wit, Janny; Driessen, Arnold

*Published in:*  
The Journal of Biological Chemistry

*DOI:*  
[10.1074/jbc.M702140200](https://doi.org/10.1074/jbc.M702140200)

**IMPORTANT NOTE: You are advised to consult the publisher's version (publisher's PDF) if you wish to cite from it. Please check the document version below.**

*Document Version*  
Publisher's PDF, also known as Version of record

*Publication date:*  
2007

[Link to publication in University of Groningen/UMCG research database](#)

*Citation for published version (APA):*

Bol, R., de Wit, J. G., & Driessen, A. J. M. (2007). The active protein-conducting channel of Escherichia coli contains an apolar patch. *The Journal of Biological Chemistry*, 282(41), 29785-29793. DOI: 10.1074/jbc.M702140200

**Copyright**

Other than for strictly personal use, it is not permitted to download or to forward/distribute the text or part of it without the consent of the author(s) and/or copyright holder(s), unless the work is under an open content license (like Creative Commons).

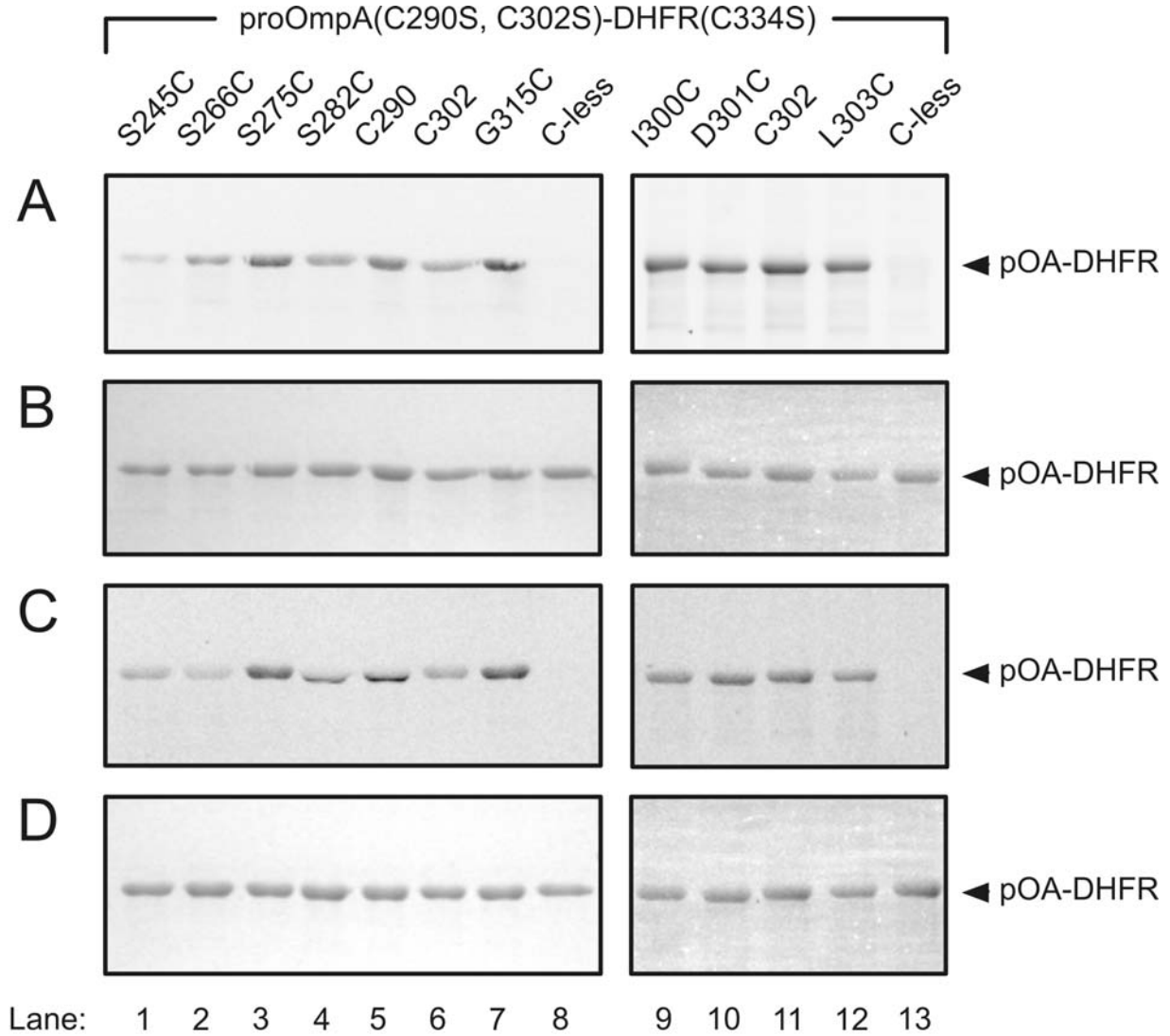
**Take-down policy**

If you believe that this document breaches copyright please contact us providing details, and we will remove access to the work immediately and investigate your claim.

*Downloaded from the University of Groningen/UMCG research database (Pure): <http://www.rug.nl/research/portal>. For technical reasons the number of authors shown on this cover page is limited to 10 maximum.*

SUPPLEMENTARY MATERIAL

**Fig. 1S. Purification and fluorescent labeling of proOmpA-DHFR proteins.** *A* and *B*, labeling of proOmpA-DHFR with Oregon Green 488 maleimide (OG). *C* and *D*, labeling of proOmpA-DHFR with N-((2-(iodoacetoxy)ethyl)-N-methyl)amino-7-nitrobenz-2-oxa-1,3-diazole (NBD). Fluorescent imaging (*A*, *C*) and Coomassie Brilliant Blue R-250 staining (*B*, *D*) of the proOmpA-DHFR proteins. For fluorescent imaging, a band-pass filter at 520 nm was used with exposures for 100 ms (*A*) and 1.5 s (*C*). In all lanes, 0.5  $\mu$ g of protein was loaded.



Supplementary Figure 1S. Bol *et al.*