

RESEARCH ARTICLE

Open Access

Association of COMT genotypes with S-COMT promoter methylation in growth-discordant monozygotic twins and healthy adults

Felix Schreiner¹, Osman El-Maarri², Bettina Gohlke¹, Sonja Stutte¹, Nicole Nuesgen², Manuel Mattheisen³, Rolf Fimmers³, Peter Bartmann⁴, Johannes Oldenburg² and Joachim Woelfle^{1*}

Abstract

Background: Catechol-O-Methyltransferase (COMT) plays a key role in dopamine and estrogen metabolism. Recently, COMT haplotypes rather than the single polymorphism Val158Met have been reported to underlie differences in protein expression by modulating mRNA secondary structure. So far, studies investigating the epigenetic variability of the S-COMT (soluble COMT) promoter region mainly focused on phenotypical aspects, and results have been controversial.

Methods: We assessed S-COMT promoter methylation in saliva and blood derived DNA with regard to early pre- and postnatal growth as well as to genotype for polymorphisms rs6269, rs4633, and rs4680 (Val158Met) in 20 monozygotic twin pairs (mean age 4 years), who were discordant for intrauterine development due to severe fetofetal-transfusion syndrome. Methylation levels of two previously reported partially methylated cytosines were determined by the quantitative SIRPH (SNuPE-IP-RP-HPLC) assay.

Results: Overall, we observed a high variability of S-COMT promoter methylation, which did not correlate with individual differences in the pre- or postnatal growth pattern. Within the twin pairs however we noted a distinct similarity that could be linked to underlying COMT genotypes. This association was subsequently confirmed in a cohort of 93 unrelated adult controls. Interestingly, 158Val-alleles were found at both ends of the epigenotypical range, which is in accordance with a recently proposed model of COMT haplotypes corresponding to a continuum of phenotypical variability.

Conclusion: The strong heritable component of S-COMT promoter methylation found in our study needs to be considered in future approaches that focus on interactions between COMT epigenotype and phenotype.

Background

Catechol-O-Methyltransferase (COMT) plays a key role in dopamine and estrogen metabolism. In humans, the COMT gene on chromosome 22q11.21 encodes two different protein isoforms, MB-COMT (membrane bound) and S-COMT (soluble isoform), each with its own promoter [1]. The influence of a functional SNP 158Met/Val (rs4680), which is located within the coding region of both MB-COMT and S-COMT, has been investigated in a broad spectrum of psychiatric diseases and estrogen-

dependent disorders [2-4]. However, reported genotype effects were often modest or even inconsistent, suggesting the presence of additional functional SNPs within this gene. Indeed, Diatchenko and co-workers identified three common COMT haplotypes corresponding to a continuum of phenotypical variability, namely pain sensitivity, with the 158Val allele being part of both the high- and low-sensitive haplotype, whereas the haplotype containing 158Met associates with average pain sensitivity [5]. More recently, the same group demonstrated that these three haplotypes mediate their functional significance by alteration of mRNA secondary structure such that the most stable structure associates with the lowest protein level and activity [6].

* Correspondence: Joachim.Woelfle@ukb.uni-bonn.de

¹Pediatric Endocrinology Division, Children's Hospital, University of Bonn, Adenauerallee 119, Bonn 53113, Germany

Full list of author information is available at the end of the article

Besides heritable genetic factors, environmental events which accumulate over lifetime are a second major determinant of an individual's gene expression pattern which contributes to both physiological appearance and disease disposition. The mechanisms behind this intra-generational adaptation are complex and involve epigenetic processes such as chromatin modification and DNA methylation [7,8]. In mammals, DNA methylation occurs almost exclusively at the cytosine of CG dinucleotides, and several methods to quantify methylation at these elements have been established in recent years [9,8-11]. Since then, first studies analyzing COMT promoter methylation in relation to phenotypical aspects have been published. Sasaki et al. reported on MB-COMT promoter methylation in endometrial cancer but not in normal endometrial tissue; in contrast, the S-COMT promoter was found to be unmethylated in both cancerous and normal endometrium [12]. Partial methylation of the MB-COMT promoter was also reported in human frontal lobe brain tissues, and hypomethylation at this area was observed in schizophrenia and bipolar disorder patients [13]. Although no such clear association between methylation levels and disposition to schizophrenia was found, Murphy et al. detected two CG sites in the S-COMT promoter region with only partial methylation in both blood and brain tissues [14]. Subsequently, Mill et al. analyzed methylation levels at these two CG sites in a cohort of monozygotic twins with discordant birth weight. Interestingly, the authors report on a considerable variation in the concordance of methylation levels between the twin pairs, which however did not associate with auxological variables at birth [15].

Since discordant birth weight in monozygotic twins can arise from several pathologies, we decided to assess S-COMT promoter methylation levels in a cohort of discordant monozygotic twins that have been selected for severe fetofetal-transfusion syndrome (FFTS). This condition is caused by anastomosing placental vessels that result in unequal blood supply and thus substantial differences in fetal nutrition between donor and recipient. In animal models, the strategy of nutrient restriction is increasingly used to investigate long-term epigenetic effects of intrauterine growth retardation [16-18]. In our cohort, we observed a remarkable variation in S-COMT promoter methylation levels in both blood and saliva derived DNA, which did not correlate with pre- or postnatal growth parameters. On the other hand, our data provide evidence for a strong association of S-COMT promoter methylation with the underlying COMT genotype.

Methods

Subjects

For an ongoing study that focuses on epigenetic parameters with respect to adverse intrauterine environment we selected 20 Caucasian twin pairs with a discordant

intrauterine growth pattern due to severe fetofetal-transfusion syndrome (FFTS). In all 20 pregnancies, this condition had been diagnosed by mid-trimester ultrasound examinations, and endoscopic laser coagulation of the anastomosing placental vessels was successfully performed before 25 weeks of gestation in a single center (Prof. Dr. K. Hecher, Barmbek Hospital, Hamburg, Germany). Details on survival rates and early neonatal outcome of this treatment regime are described elsewhere [19]. All children were born in the local referring hospital.

Mean age at birth was 34.8 weeks of gestation ($SD \pm 2.1$ wks; range 29.7-37.4 wks). Mean birth weight of the entire cohort was 1970 g ($SD \pm 500$ g; range 790-3060 g). Birth weight differences between donor and recipient ranged from 0 to 62% (mean 20.5%). Since FFTS occurs exclusively in monozygotic twin pregnancies, no further genetic examinations were necessary to confirm their monozygosity. 38 of 40 children of the present cohort did not suffer from severe postnatal complications. Two children show a significant delay of psychomotor development after major intracranial bleeding shortly after birth; auxological and epigenetic measurements of these two children were thus interpreted with caution. On examination, mean age of the cohort was 4.4 years ($SD \pm 0.6$ yrs; range 2.7-5.1 yrs).

Auxological parameters including calculations of intra-twin pair differences were expressed as SD-scores according to national reference percentiles for singleton children [20,21]. At any time, parameters between former donor and recipient were classified as discordant if difference in SD scores was 1.0 or higher (except for birth weight, which is not normally distributed; birth weight discordance was defined if difference was $> 10\%$).

Unrelated control individuals (93 adult blood donors; 47 females) were recruited from the blood donation unit of the Institute for Experimental Hematology and Transfusion Medicine, University of Bonn. Written informed consent was obtained from all participants or their parents. The study was approved by the ethic's committee of the University of Bonn.

DNA samples and bisulfite conversion

DNA from blood lymphocytes was extracted using the QiaAmp[®] DNA purification kit (Qiagen, Germany). Buccal cell derived DNA was collected and prepared from Oragene[®] saliva samples according to the manufacturer protocol (DNA Genotek, Canada). Suitable amounts of saliva were obtained from 17 out of 20 twin pairs, while blood-derived DNA was available from all 40 children. For methylation analysis, a total of 1 μ g DNA was modified by bisulfite conversion using the Epitect[®] kit (Qiagen, Germany). The basic principle of bisulfite modification is the chemical conversion of unmethylated cytosine residues to uracil, whereas methylated cytosines remain unchanged [22]. This

step allows accurate quantitative measurement of locus-specific cytosine methylation by several PCR-based downstream reactions [9,10,23].

Quantitative methylation analysis

Site-specific methylation was determined at two CG dinucleotides within the S-COMT promoter region (Figure 1) which have been found to be partially methylated in two previous studies [14,15]. A detailed description of the SIRPH (SNuPE IP RPHPLC) assay used is given elsewhere [23]. Briefly, a single nucleotide primer extension reaction (SNuPE) of bisulfite converted DNA in combination with ion pair reverse phase high performance liquid chromatography (IP RP HPLC) enables discrimination and quantification of methylated and unmethylated CGs based on the respective mass and hydrophobicity of the extended primer product. An example demonstrating the chromatographic discrimination between methylated and unmethylated cytosines is given in Figure 2. All measurements were done in duplicate, including repeated DNA extraction and bisulfite conversion. Variation between the two runs was thoroughly below 5%. Methylation levels given in the results section represent the respective average values.

A potential amplification bias due to additional SNPs that would cause mismatch of amplification and/or extension primers was ruled out by genomic sequencing of the surrounding regions in all 20 twin pairs. We did not detect any further sequence variation in our DNA samples. A screen of online databases revealed only one SNP (rs72563160) within the primer complementary regions. This variant is found with a low frequency (0.04) in African populations and seems to be absent in Caucasians <http://www.ncbi.nlm.nih.gov/projects/SNP>.

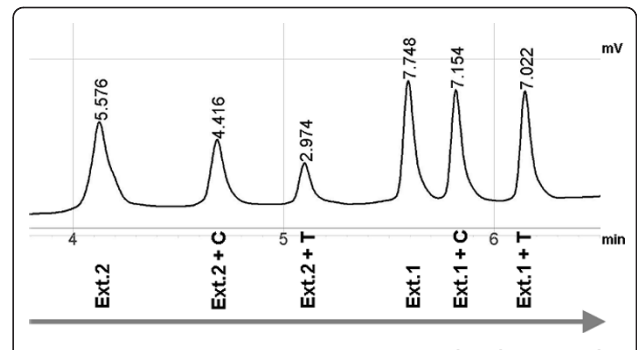


Figure 2 A SNuPE IP RP HPLC example showing the discrimination of extension primer only vs. extended primer oligonucleotides (T with higher molecular weight than C). Methylation levels can be calculated by comparison of the relative heights of Ext.+C (formerly methylated cytosine) and Ext.+T (formerly unmethylated cytosine). Differences in length and composition of the two extension primers allowed discrimination of two separate extension primer sets (Ext.1 and Ext.2) within one SNuPE run.

Oligonucleotide sequences for PCR and SNuPE reactions are available on request.

Genotyping

Genotypes for the rs4680 variant (Val158Met) were analyzed by PCR-RFLP, using an *Nla*III restriction digest as described previously [24]. Genotypes for rs6269 (-91 bp to ATG) and rs4633 (in twins only; +186 bp to ATG) were determined by direct genomic sequencing. This method was chosen primarily in order to exclude additional sequence variation within or bordering to the amplified region.

Based on the genotype information for these three SNPs, we constructed haplotypes to each individual. According to the findings of Diatchenko and coworkers



Figure 1 Genomic sequence flanking the S-COMT promoter region (atg in italics). Primer sequences for the PCR amplification of bisulfite-converted DNA are Ampl Fwd: 5' TAGGAGGAGTATAGAGTATTG 3' and Ampl Rev: 5' TATCACCCATAAACAAATTATA 3'; Ext1 and Ext2 bordering CG1 and CG2 indicate the complementary extension primer sequences used in the SNuPE analysis.

[5,6], about 95% of the alleles in the Caucasian population carry three major functional haplotypes which are formed by four SNPs. We are aware that we have analyzed only three (rs6269-A/G, rs4633-C/T, rs4680-A/G) of these four variants (lacking rs4818-C/G) in twins, and only two (rs6269-A/G, rs4680-A/G) in blood donors. However, determination of the latter two genotypes is sufficient to differentiate between the three common COMT activity haplotypes [25]. Assessment of individual haplotypes in twins and blood donors was performed by the FAMHAP software [26]. Haplotype frequencies in both cohorts (*twins*: LPS 0.450, APS 0.525, HPS 0.025; *blood donors*: LPS 0.385, APS 0.516, HPS 0.093) were comparable to those reported previously in Caucasian individuals [6].

Statistical analysis

Data analysis was performed using the SPSS software version 17.0. To assess the degree of association between methylation levels and/or auxological parameters within twin pairs and between groups, we used Pearson correlation coefficients. Inter-twin-pair differences were analyzed using Student's t-tests, intra-twin-pair differences using a paired t-test. Backward stepwise multivariate linear regression analysis was performed to identify the independent variables that best predicted methylation levels.

Testing for differences in the degree of methylation between genotypes was performed using one-way ANOVAs and t-tests. Since both methods assume that all observations are independent, which for methylation values of MZ twins might not be the case, we re-calculated the differences between the genotype groups regarding COMT methylation in blood and saliva using a mixed linear model with methylation and genotype as two fixed factors and with family as a random factor to account for within-family dependence. In addition, under the assumption of an additive mode of inheritance we tested an additive genetic model (1df test) using linear regression analysis by coding genotype information as 0, 1, or 2 copies of the minor allele for each SNP, respectively.

A p-value < 0.05 was considered statistically significant; a p-value between 0.05 and 0.1 as an indicator for a statistical trend of significance.

Results

Among the twin samples, we observed a high variability of individual methylation levels at both analyzed CG sites. In blood derived DNA, levels ranged from 26.5 to 48.3% (mean $40.1 \pm 5.4\%$) at CG1 (CG 23 in reference 14) and from 48.7 to 70.1% (mean $61.9 \pm 6.1\%$) at CG2 (CG 27 in reference 14). In saliva DNA, levels ranged from 13.9 to 51.3% (mean $30.2 \pm 8.2\%$) at CG1 and from 21.0 to 68.0% (mean $41.8 \pm 10.6\%$) at CG2. In both specimens there was a strong correlation between methylation levels at these

two CG dinucleotides (CG1 vs. CG2: $R = 0.94$, $p < 0.001$ for saliva DNA; $R = 0.95$, $p < 0.001$ for blood DNA). This is in accordance with the findings of Mill et al. [15], who also reported on a relatively high correlation coefficient ($R = 0.77$) of methylation levels at these two CG sites in saliva derived DNA. In addition, we found a significant intra-individual correlation between blood vs. saliva DNA methylation levels ($R = 0.386$, $p = 0.024$; Figure 3).

Finally, we observed a remarkable intra-twin pair correlation of mean S-COMT methylation levels (donor vs. recipient: $R = 0.77$, $p < 0.001$ in blood DNA and $R = 0.41$, $p = 0.106$ in saliva DNA; the latter coefficient increased to $R = 0.80$, $p < 0.001$ after exclusion of one pair with an exceptionally high intra-pair variation; see Figure 4). These findings led us to assume a strong heritability of individual S-COMT promoter methylation levels.

S-COMT promoter methylation and genetic background

We determined genotypes for the variants rs6269-A/G, rs4633-C/T, and rs4680-A/G for all twin pairs and compared S-COMT promoter methylation levels among the genotype groups. In blood derived DNA, we found highly significant associations of methylation levels with each of the analyzed genotypes (table 1). Testing for differences was performed using one-way ANOVAs and t-tests. Since both methods assume that all observations are independent, which for methylation values of MZ twins might not be the case, we re-calculated the differences between the genotype groups regarding COMT methylation in blood and saliva using a mixed linear model. This did not change the observed significance levels for methylation differences between the respective genotypes in blood samples. In saliva DNA, variation of methylation for both analysed CGs was markedly higher, and mean methylation levels

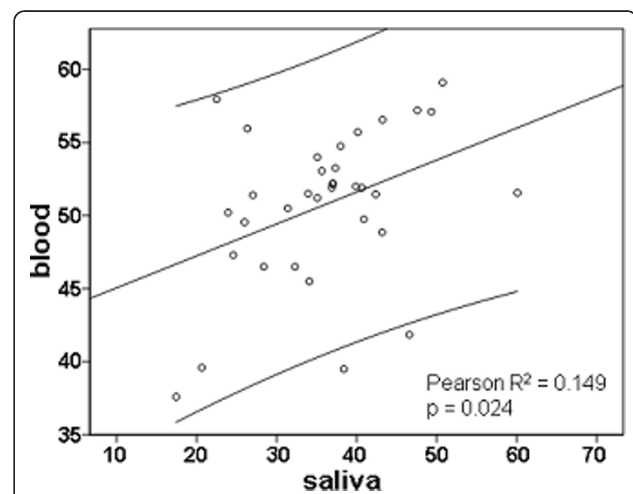
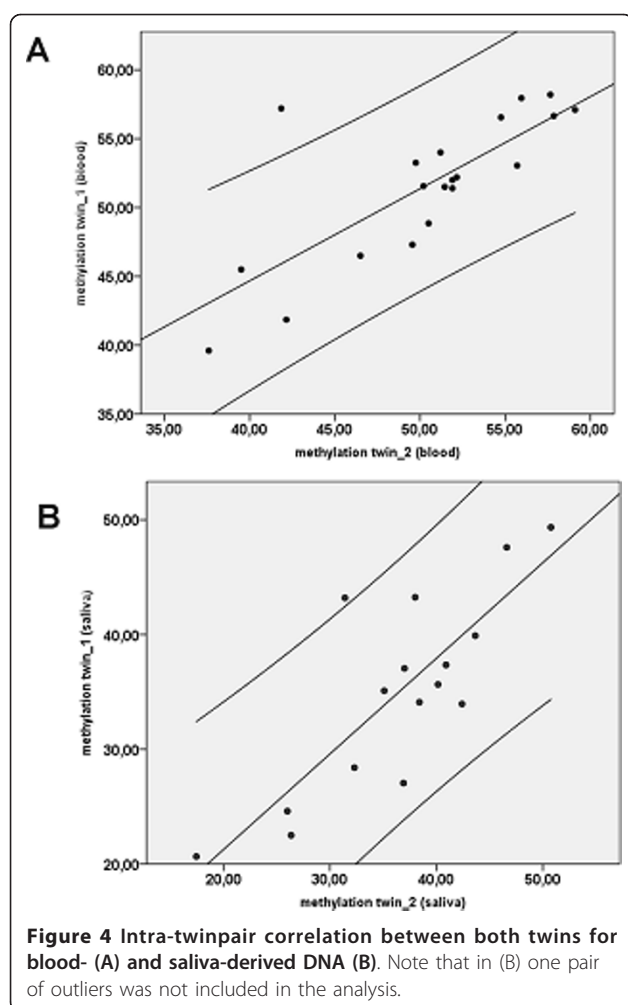


Figure 3 Intra-individual correlation between saliva and blood DNA methylation levels at the S-COMT promoter (mean methylation = (CG1 + CG2)/2).



between the genotype groups differed with only weak significance (table 2) when distinguishing between two genotype groups; the analysis between all three groups using the mixed linear model did not reveal significant differences. In addition, under the assumption of an additive mode of inheritance we tested an additive genetic model, which confirmed the significance levels between genotype groups for blood DNA in both cohorts (table 1/3) and revealed trends for the saliva samples (rs6269: $p = 0.086$; rs4633: $p = 0.070$; rs4680: $p = 0.070$).

Because any additional sequence variation would have to be considered as a potential source of amplification bias in the SNUPE analysis, we excluded the presence of additional SNPs by direct genomic sequencing in all 20 twin pairs. We did not detect any further sequence variation.

Next, we analyzed S-COMT promoter methylation and COMT genotypes in an additional sample of 93 healthy adult blood donors. Methylation levels at both cytosines (lymphocyte DNA only; CG1 mean $42.2 \pm 5.9\%$; CG2 mean $55.9 \pm 5.7\%$), range of variation, as well as genotype-

epigenotype associations (all $p < 0.01$) were comparable to those seen in the twin cohort. We did not detect any significant changes in the methylation pattern that may be related to the considerable age difference between the two cohorts.

Considering the functional relevance of three major COMT haplotypes due to variation in the mRNA secondary structure and differences in protein expression, we were interested to see whether promoter methylation levels parallel the proposed phenotypical grading into low- (LPS), average- (APS), and high-pain-sensitive (HPS), respectively [5,6]. Figure 5 shows mean S-COMT promoter methylation levels with regard to the assumed haplotypes and displays the putative association in a graphical way. Belonging to both the high- and the low-pain-sensitive haplotype, rs4680 mutant alleles (158Val) were found at both ends of the epigenotypical range.

Pre- and postnatal growth, COMT-genotypes and S-COMT promoter methylation

In order to determine a potential impact of environmental factors on the individual S-COMT promoter methylation, we compared methylation levels with pre- and postnatal growth parameters. Concerning the FFTS-status, we did not detect differences in methylation levels between donors and recipients (see table 4), even when analyzing only the subgroup of twin pairs with discordant birth weight (10 pairs with a difference of $> 10\%$, data not shown).

We next aimed to directly correlate auxological parameters with methylation levels. Disregarding the information on the strong heritability of this locus' methylation pattern, we observed a significant correlation between S-COMT promoter methylation levels and the timing of laser treatment ($r = 0.448$; $p = 0.006$), but no significant correlations regarding methylation levels vs. gestational age or auxological birth parameters (birth weight, length, head circumference). However, COMT genotypes were not equally distributed among gestational ages at the time of laser treatment (table 5) as well as at birth (table 6). After correction for background genetics using linear regression analysis, only genotype ($\beta = -9.5$; $p < 0.001$) but not timing of laser treatment or gestational age at birth contributed significantly to the observed variance of COMT methylation.

At birth intra-twin-pair differences were greater than 1.0 SDS in 10/19 for birth length (data missing in one pair) and greater than 10% in 10/20 pairs for birth weight, respectively. After 4 years only 4 twin pairs were still discordant in length-SDS. We compared both the delta-SD scores (height) in intra-twin-pair approximation and individual height within the total sample of 40 children with measurements of absolute and delta S-COMT methylation. Both with and without correction for genotypes, we

Table 1 S-COMT methylation [% ± SD] with respect to COMT genotype in Blood DNA (twin cohort)

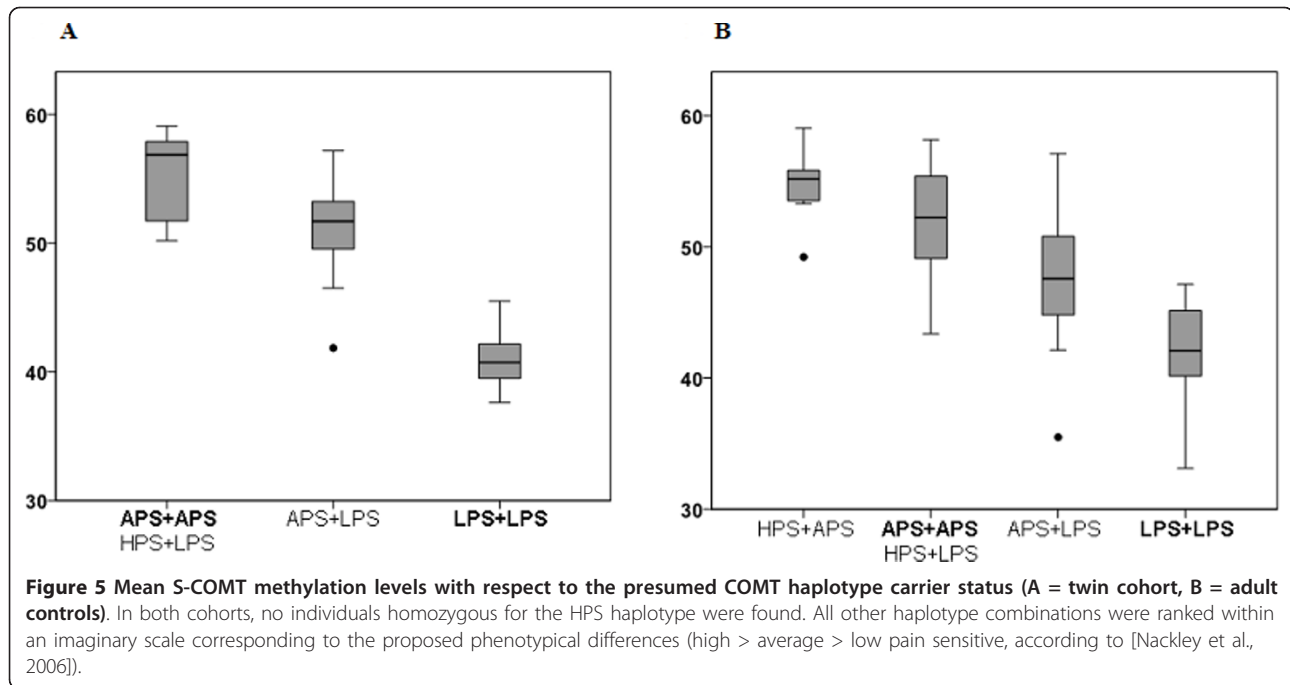
Variant	CG1	CG2b	mean	CG1	CG2b	mean	CG1	CG2b	mean	p-value
rs6269	AA 44.8 ± 3.1	67.1 ± 3.1	56.0 ± 3.0 (n = 10)	AG 40.3 ± 3.0	62.1 ± 3.9	51.2 ± 3.4 (n = 24)	GG 30.6 ± 3.0	51.4 ± 3.0	41.0 ± 2.7 (n = 6)	< 0.01
rs4633	CC 33.2 ± 5.3	54.2 ± 5.8	43.7 ± 5.4 (n = 8)	CT 40.3 ± 3.2	62.0 ± 4.1	51.2 ± 3.5 (n = 22)	TT 44.8 ± 3.1	67.1 ± 3.1	56.0 ± 3.0 (n = 10)	< 0.01
rs4680	AA 44.8 ± 3.1	67.1 ± 3.1	56.0 ± 3.0 (n = 10)	AG 40.3 ± 3.2	62.0 ± 4.1	51.2 ± 3.5 (n = 22)	GG 33.2 ± 5.3	54.2 ± 5.8	43.7 ± 5.4 (n = 8)	< 0.01

Note that similar or equal methylation values across genotype groups for different SNPs result from a high (in the twin cohort almost complete) linkage disequilibrium between rs6269, rs4633, and rs4680. Please note that shown p-values were calculated using one-way ANOVAs, which do not take the interrelatedness of the observations into account.

Table 2 S-COMT methylation [% ± SD] with respect to COMT genotypes in Saliva DNA (twin cohort)

Variant	CG1	CG2b	mean	CG1	CG2b	mean	CG1	CG2b	mean	p-value
rs6269	AA 34.7 ± 14.7	43.4 ± 18.0	39.0 ± 16.2 (n = 10)	AG 30.9 ± 6.1	40.5 ± 7.8	35.7 ± 6.8 (n = 24)	GG 23.1 ± 9.3	31.9 ± 11.9	27.5 ± 10.6 (n = 6)	< 0.05 *
rs4633	CC 24.7 ± 8.2	33.2 ± 10.1	28.9 ± 9.1 (n = 8)	CT 31.2 ± 6.2	41.0 ± 7.8	36.1 ± 6.8 (n = 22)	TT 34.7 ± 14.7	43.4 ± 18.0	39.0 ± 16.2 (n = 10)	< 0.05 *
rs4680	AA 34.7 ± 14.7	43.4 ± 18.0	39.0 ± 16.2 (n = 10)	AG 31.2 ± 6.2	41.0 ± 7.8	36.1 ± 6.8 (n = 22)	GG 24.7 ± 8.2	33.2 ± 10.1	28.9 ± 9.1 (n = 8)	< 0.05 *

* rs6269: AG vs. GG p < 0.05; rs4633: CC vs. CT p < 0.05; rs4680: AG vs. GG p < 0.05. Please note that shown p-values were calculated using t-tests, which does not take the interrelatedness of the observations into account.



did not see any significant association between postnatal growth parameters and methylation levels ($p > 0.05$ in all analyses). As mentioned above, two children suffered from intracranial bleeding and a subsequent delay in motor-development. Postnatal growth of these two children was obviously impaired, whereas S-COMT promoter methylation appeared to be unaffected by this condition as it was well within the intra-twin-pair range seen in the remaining pairs.

Finally, we detected a tendency towards slightly higher methylation levels in males (mean S-COMT promoter methylation $48.5 \pm 5.8\%$ in females versus $53.0 \pm 4.8\%$ in males; $p = 0.01$). Similar differences have been reported previously for other non-imprinted loci [27]. Inclusion of gender in linear regression analysis did not affect genotype-epigenotype associations in twins. In blood donors, inclusion of gender in the linear regression analysis led to an increase of R^2 from 0.534 to 0.609, explaining an additional 7.5% of variance. Therefore we assume that the overall confounding effect of gender is small compared to the association with COMT genotypes.

Discussion

Based on two studies reporting on partial methylation of two CG sites within the S-COMT promoter region [14,15], we aimed to determine whether and to which extent environmental and genetic variables associate with the individual epigenetic profile at the S-COMT promoter in a cohort of discordant monozygotic twins. Our findings provide evidence for a strong interaction

between genetic background and S-COMT promoter methylation. Considering the well recognized functional relevance of discrete genomic variation and the physiological role of locus-specific cytosine methylation in the context of transcription and gene expression, such an association is not surprising. Indeed, there are several recent reports on locus-specific methylation patterns that are closely associated with the genetic background [28-33]. Moreover, we did not detect any significant association between methylation levels and pre- or postnatal growth parameters and could confirm the close relation between genotype and epigenotype in a separate cohort of adult singleton blood donors. Interestingly, methylation levels in 4-year-old children and adults were largely comparable, which further underlines the close relation between genetic background and promoter methylation at this locus.

While planning this study we were aware that methylation analyses using peripheral blood derived DNA in monozygotic twins may be biased due to their fused circulations. Fetal sharing of circulating blood has been described in monozygotic twin pregnancies even without the presence of FETS [34]. In a study on monozygotic twins discordant for Beckwith-Wiedemann syndrome, Weksberg et al. reported on imprinting abnormalities in hematopoietic cells from both the affected and the unaffected twin, whereas in fibroblasts epigenetic defects were found in the affected twin only [35]. Thus we decided to analyze DNA from two tissues: blood and oral epithelial cell samples. Preceding laboratory tests using conventional buccal smears revealed a high degree

Table 3 S-COMT methylation [% ± SD] with respect to COMT genotype in Blood DNA (blood donors)

Variant	CG1	CG2b	mean	CG1	CG2b	mean	CG1	CG2b	mean	p-value
rs6269	AA 47.0 ± 4.6	60.1 ± 3.7	53.6 ± 3.5 (n = 26)	AG 42.2 ± 4.7	55.7 ± 5.1	49.0 ± 4.8 (n = 44)	GG 36.6 ± 4.6	51.4 ± 5.3	44.0 ± 4.8 (n = 23)	< 0.01
rs4680	AA 47.3 ± 4.2	60.3 ± 3.7	53.8 ± 3.4 (n = 33)	AG 40.8 ± 3.8	54.7 ± 4.5	47.8 ± 4.0 (n = 46)	GG 34.1 ± 4.1	49.1 ± 5.4	41.6 ± 4.5 (n = 14)	< 0.01

Note that due to the high linkage disequilibrium between rs6269, rs4633, and rs4680, in the replication cohort we assessed only rs6269 and rs4680, which are sufficient to differentiate between the 3 common activity haplotypes.

Table 4 Auxiological and epigenetic differences between donors and recipients (mean ± SEM)

	Donors	Recipients	p-value
Birth weight SDS	-1.45 ± 0.2	-0.64 ± 0.2	< 0.01
Birth length SDS	-1.6 ± 0.3	-0.5 ± 0.2	< 0.01
Height SDS (follow-up)	-0.8 ± 0.2	-0.3 ± 0.2	< 0.01
BMI SDS (follow-up)	-0.7 ± 0.2	-0.1 ± 0.2	< 0.01
S-COMT methylation (blood)	50.4 ± 1.4	51.6 ± 1.2	n.s.
S-COMT methylation (saliva)	36.5 ± 2.1	35.0 ± 2.2	n.s.

of variation regarding both amount and purity of DNA, which may result from bacterial contamination and/or DNA degradation even during short term storage of these specimens. Accordingly, methylation measurements in smears taken from the same individual at the same time were scarcely reproducible (data not shown). In contrast, methylation measurements using DNA from Oragene liquid saliva samples revealed a markedly higher intra-individual reproducibility. This may explain why Mill et al. who exclusively analyzed S-COMT methylation in buccal smear DNA failed to detect a similar heritability in their twin cohort [15]. On the other hand, this group had selected their twins primarily on the presence of a significant discordance in birth weight. Although they do not give detailed information on the underlying pathology, we speculate that the majority of these twin pairs suffered from conditions that worsened in the last trimester of pregnancy, in contrast to an equalization of the formerly disproportionate (mid-trimester) blood supply in our FFTS twins. Thus, differences in the plasticity of the (S-COMT promoter) epigenetic encoding during different periods of the intrauterine development might explain this discrepancy, too.

We were not able to detect significant differences in S-COMT promoter methylation levels between donors and recipients. This seems to indicate that the adverse intrauterine environment due to FFTS until decompensation and laser treatment did not influence formation and/or maintenance of the promoter methylation at this region. Within the period after laser treatment however auxiological parameters converged in the majority of twin pairs, meaning that critical differences in placental supply had been dissolved. Consequently, a potential impact of malnutrition during later gestational phases may be missed by our approach.

In order to eliminate any amplification bias that may arise from the occurrence of single nucleotide polymorphisms within or nearby the primer regions, we sequenced the S-COMT promoter region in genomic DNA samples from all 20 twin pairs and did not detect any new sequence variation. Another potential source of biased methylation analysis however remains the lack of information on the leukocyte subtype distribution in the blood samples used for DNA extraction. This issue has already been discussed by Boks et al. in their recent publication on methylation levels of several CG loci found to be closely linked to genetic polymorphisms in a large-scale twin study using the Illumina GoldenGate assay [33]. Although we do not have current leukocyte subtype counts, the conserved (albeit less clear) genotype-epigenotype-association found in the Oragene saliva samples seems to rule out this objection.

A limitation of our study is that we do not have quantitative mRNA measurements, which would allow us to evaluate our findings with respect to the physiological entity of promoter methylation and transcriptional activity. In vitro experiments by Nackley and co-workers using transfected full-length COMT cDNA that differed only in three nucleotides within the coding region of exons 1 and 2 revealed marked differences in the levels of protein expression and enzyme activity which could be explained by either differences in mRNA secondary structure stability or, to less extent, a previously reported decrease in protein thermostability mediated by the 158Met allele. Total COMT RNA abundance, in contrast, did not parallel COMT protein levels, most likely attributing to the nature of their experimental design in that COMT was expressed in vitro under the regulation of identical promoters [6]. Our data provide evidence that a set of polymorphisms within the promoter and coding region of this gene strongly associates with the methylation status of the (S-COMT-) promoter region. Interestingly, individuals assumed to carry two alleles with the LPS haplotype, which was previously associated with the relatively highest S-COMT enzyme activity (figure one in ref. [6]), exhibited a markedly lower S-COMT promoter methylation as compared to those carrying the APS and HPS alleles (Figure 5). Presuming an inverse relation between promoter methylation and transcriptional activity, a constellation of lower promoter methylation in alleles associated previously with higher protein activity and *vice versa* would conflict with the assumption of a simple feed-back response between transcriptional activity and the abundance of either COMT

Table 5 Genotype and gestational age at laser treatment (mean ± SD)

	Wks	wks	wks	p-value
rs6269	AA 22.4 ± 1.2 (n = 10)	AG 20.5 ± 2.4 (n = 24)	GG 18.8 ± 0.5 (n = 6)	< 0.01
rs4633	CC 18.8 ± 0.4 (n = 8)	CT 20.7 ± 2.5 (n = 22)	TT 22.4 ± 1.2 (n = 10)	< 0.01
rs4680	AA 22.4 ± 1.2 (n = 10)	AG 20.7 ± 2.5 (n = 22)	GG 18.8 ± 0.4 (n = 8)	< 0.01

Table 6 COMT genotype and gestational age at birth (mean ± SD)

	Wks	wks	Wks	p-value
rs6269	AA 36.2 ± 0.9 (n = 10)	AG 34.2 ± 2.2 (n = 24)	GG 35.0 ± 1.9 (n = 6)	0.082 *
rs4633	CC 33.7 ± 2.9 (n = 8)	CT 34.6 ± 1.8 (n = 22)	TT 36.2 ± 0.9 (n = 10)	0.089 *
rs4680	AA 36.2 ± 0.9 (n = 10)	AG 34.6 ± 1.8 (n = 22)	GG 33.7 ± 2.9 (n = 8)	0.089 *

* Kruskal-Wallis test significance levels are displayed in the table;

Mann-Whitney-U-test: rs6269: AA vs AG p = 0.034; rs4633: CC vs. TT p = 0.049; rs4680: AA vs. GG p = 0.049.

protein or its substrates. Indeed, besides an estrogenic down-regulation of COMT expression mediated by estrogen response elements that have been found in the promoter regions of both the proximal S-COMT and the distal MB-COMT promoter [36,37], there is also evidence for an induction of COMT by estradiol and ethinyl-estradiol which would be consistent with the assumption of a physiological response to a threat to the genome by catechol-estrogens that can be blocked by their O-methylation [36,38].

To our knowledge, the only comprehensive investigation so far that aimed to analyze COMT epigenotype, genotype, and phenotype including mRNA expression data is the study of Abdolmaleky et al. [13]. The authors report on MB-COMT promoter hypomethylation with a concomitant increase in MB-COMT transcription in frontal lobe tissue from schizophrenia and bipolar disorder patients, as compared to unaffected controls. Except for a borderline significance found for the enrichment of 158Val alleles with MB-COMT promoter hypomethylation and disease disposition, there was however no consistent relation between individual epigenotype and the Val158Met polymorphism. It will be interesting to test whether the inclusion of further genetic variants may strengthen the relation between genotype and epigenotype as seen for the S-COMT promoter methylation in lymphocytes in our sample.

Conclusion

Our data revealed a strong heritable component of individual S-COMT promoter methylation. Simultaneous consideration of heritable, i.e. genetic components should be a basic item in all studies that focus on the relation between phenotype and epigenotype.

Disclosure statement

The authors declare that they have no competing interests.

Acknowledgements

This work was supported by a research grant from Pfizer Germany.

Author details

¹Pediatric Endocrinology Division, Children's Hospital, University of Bonn, Adenauerallee 119, Bonn 53113, Germany. ²Institute for Experimental Hematology and Transfusion Medicine, University of Bonn, Sigmund-Freud-

Str. 25, Bonn, 53127, Germany. ³Institute for Medical Biometry, Informatics and Epidemiology, University of Bonn, Sigmund-Freud-Str. 25, Bonn, 53127, Germany. ⁴Department of Neonatology, Children's Hospital, University of Bonn, Adenauerallee 119, Bonn 53113, Germany.

Authors' contributions

FS, OEM, BG, PB, JO, and JW designed the study. FS, BG, and SS collected patient data and samples. FS and NN performed the experiments. FS, OEM, MM, RF, and JW analyzed the data. FS and JW wrote the paper. All authors read and approved the final manuscript.

Received: 10 April 2011 Accepted: 1 September 2011

Published: 1 September 2011

References

- Tenhunen J, Salminen M, Lundström K, Kiviluoto T, Savolainen R, Ulmanen I: Genomic organization of the human catechol O-methyltransferase gene and its expression from two distinct promoters. *Eur J Biochem* 1994, **223**:1049-1059.
- Männistö PT, Kaakkola S: Catechol-O-methyltransferase (COMT): biochemistry, molecular biology, pharmacology, and clinical efficacy of the new selective COMT inhibitors. *Pharmacol Rev* 1999, **51**:593-628.
- Hosak L: Role of COMT gene Val158Met polymorphism in mental disorders: a review. *Eur Psychiatry* 2007, **22**:276-281.
- Ding H, Fu Y, Chen W, Wang Z: COMT Val158Met polymorphism and breast cancer risk: evidence from 26 case-control studies. *Breast Cancer Res Treat* 2010, **123**:265-270.
- Diatchenko L, Slade GD, Nackley AG, Bhalang K, Sigurdsson A, Belfer I, Goldman D, Xu K, Shabalina SA, Shagin D, Max MB, Makarov SS, Maixner W: Genetic basis for individual variations in pain perception and the development of a chronic pain condition. *Hum Mol Genet* 2005, **14**:135-143.
- Nackley AG, Shabalina SA, Tchivileva IE, Satterfield K, Korchynskiy O, Makarov SS, Maixner W, Diatchenko L: Human catechol-O-methyltransferase haplotypes modulate protein expression by altering mRNA secondary structure. *Science* 2006, **314**:1930-1933.
- Fraga MF, Ballestar E, Paz MF, Ropero S, Setien F, Ballestar ML, Heine-Suñer D, Cigudosa JC, Urioste M, Benitez J, Boix-Chornet M, Sanchez-Aguilera A, Ling C, Carlsson E, Poulsen P, Vaag A, Stephan Z, Spector TD, Wu YZ, Plass C, Esteller M: Epigenetic differences arise during the lifetime of monozygotic twins. *Proc Natl Acad Sci* 2005, **102**:10604-10609.
- Feinberg AP: Epigenetics at the epicenter of modern medicine. *JAMA* 2008, **299**:1345-1350.
- Dahl C, Goldberg P: DNA methylation analysis techniques. *Biogerontology* 2003, **4**:233-250.
- El-Maarri O: Methods: DNA methylation. *Adv Exp Med Biol* 2003, **544**:197-204.
- Irizarry RA, Ladd-Acosta C, Carvalho B, Wu H, Brandenburg SA, Jeddloh JA, Wen B, Feinberg AP: Comprehensive high-throughput arrays for relative methylation (CHARM). *Genome Res* 2008, **18**:780-790.
- Sasaki M, Kaneuchi M, Sakuragi N, Dahiya R: Multiple promoters of catechol-O-methyltransferase gene are selectively inactivated by CpG hypermethylation in endometrial cancer. *Canc Res* 2003, **63**:3101-3106.
- Abdolmaleky HM, Cheng K, Faraone SV, Wilcox M, Glatt SJ, Gao F, Smith CL, Shafa R, Aali B, Carnevale J, Pan H, Papageorgis P, Ponte JF, Sivaraman V, Tsuang MT, Thiagalingam S: Hypomethylation of MB-COMT promoter is a major risk factor for schizophrenia and bipolar disorder. *Hum Mol Genet* 2006, **15**:3132-3145.
- Murphy BC, O'Reilly RL, Singh SM: Site-specific cytosine methylation in S-COMT promoter in 31 brain regions with implications for studies

- involving schizophrenia. *Am J Med Genet B Neuropsychiatr Genet* 2005, **133B**:37-42.
15. Mill J, Dempster E, Caspi A, Williams B, Moffitt T, Craig I: Evidence for monozygotic twin (MZ) discordance in methylation level at two CpG sites in the promoter region of the catechol-O-methyltransferase (COMT) gene. *Am J Med Genet B Neuropsychiatr Genet* 2006, **141**:421-425.
 16. Park JH, Stoffers DA, Nicholls RD, Simmons RA: Development of type 2 diabetes following intrauterine growth retardation in rats is associated with progressive epigenetic silencing of Pdx1. *J Clin Invest* 2008, **118**:2316-2324.
 17. Fu Q, Yu X, Callaway CW, Lane RH, McKnight RA: Epigenetics: intrauterine growth retardation (IUGR) modifies the histone code along the rat hepatic IGF-1 gene. *FASEB J* 2009, **23**:2438-2449.
 18. Unterberger A, Szyf M, Nathanielsz PW, Cox LA: Organ and gestational age effects of maternal nutrient restriction on global methylation in fetal baboons. *J Med Primatol* 2009, **38**:219-227.
 19. Hecher K, Diehl W, Zikulnig L, Vetter M, Hackelöer BJ: Endoscopic laser coagulation of placental anastomoses in 200 pregnancies with severe mid-trimester twin-to-twin transfusion syndrome. *Eur J Obstet Gynecol Reprod Biol* 2000, **92**:135-139.
 20. Hermanussen M, Thiel C, Tschamtko V, von Büren E: Synthetische Referenzwerte für Körpergröße. Deutsche Normalwerte (Basis 1993) für alle Altersstufen zwischen 0 und 20 Jahren. *Kinder Jugendarzt* 1999, **30**:488-493, (German).
 21. Voigt M, Schneider KT, Jahrig K: Analysis of a 1992 birth sample in Germany: new percentile values of the body weight of newborn infants. *Geburtshilfe Frauenheilkd* 1992, **56**:550-558, (German).
 22. Frommer M, McDonald LE, Millar DS, Collis CM, Watt F, Grigg GW, Molloy PL, Paul CL: A genomic sequencing protocol that yields a positive display of 5-methylcytosine residues in individual DNA strands. *Proc Natl Acad Sci* 1992, **89**:1827-1831.
 23. El-Maarri O, Herbiniaux U, Walter J, Oldenburg J: A rapid, quantitative, non-radioactive bisulfite-SNuPE-IP RP HPLC assay for methylation analysis at specific CpG sites. *Nucleic Acids Res* 2002, **30**(6):e25.
 24. Wonodi I, Stine OC, Mitchell BD, Buchanan RW, Thaker GK: Association between Val 108/158 Met polymorphism of the COMT gene and schizophrenia. *Am J Med Genet Part B Neuropsychiatr Genet* 2003, **120B**:47-50.
 25. Hallelund H, Lundervold AJ, Halmøy A, Haavik J, Johansson S: Association between catechol O-methyltransferase (COMT) haplotypes and severity of hyperactivity symptoms in adults. *Am J Med Genet B Neuropsychiatr Genet* 2009, **150B**:403-10.
 26. Becker T, Knapp M: Maximum-Likelihood Estimation of Haplotype Frequencies in Nuclear Families. *Genet Epidemiol* 2004, **27**:21-32.
 27. El-Maarri O, Becker T, Junen J, Manzoor SS, Diaz-Lacava A, Schwaab R, Wienker T, Oldenburg J: Gender specific differences in levels of DNA methylation at selected loci from human total blood: a tendency toward higher methylation levels in males. *Hum Genet* 2007, **122**:505-514.
 28. Heijmans BT, Kremer D, Tobi EW, Boomsma DI, Slagboom PE: Heritable rather than age-related environmental and stochastic factors dominate variation in DNA methylation of the human IGF2/H19 locus. *Hum Mol Genet* 2007, **16**:547-554.
 29. Murrell A, Heeson S, Cooper WN, Douglas E, Apostolidou S, Moore GE, Maher ER, Reik W: An association between variants in the IGF2 gene and Beckwith-Wiedemann syndrome: interaction between genotype and epigenotype. *Hum Mol Genet* 2004, **13**:247-255.
 30. Flanagan JM, Pependikyte V, Pozdniakovaite N, Sobolev M, Assadzadeh A, Schumacher A, Zangeneh M, Lau L, Virtanen C, Wang SC, Petronis A: Intra- and interindividual epigenetic variation in human germ cells. *Am J Hum Genet* 2006, **79**:67-84.
 31. Bjornsson HT, Sigurdsson MI, Fallin MD, Irizarry RA, Aspelund T, Cui H, Yu W, Rongione MA, Ekström TJ, Harris TB, Launer LJ, Eiriksdottir G, Leppert MF, Sapienza C, Gudnason V, Feinberg AP: Intra-individual change over time in DNA methylation with familial clustering. *JAMA* 2008, **299**:2877-2883.
 32. Kaminsky ZA, Tang T, Wang SC, Ptak C, Oh GH, Wong AH, Feldcamp LA, Virtanen C, Halfvarson J, Tysk C, McRae AF, Visscher PM, Montgomery GW, Gottesman II, Martin NG, Petronis A: DNA methylation profiles in monozygotic and dizygotic twins. *Nature Genetics* 2009, **41**:240-245.
 33. Boks MP, Derks EM, Weisenberger DJ, Strengman E, Janson E, Sommer IE, Kahn RS, Ophoff RA: The Relationship of DNA Methylation with Age, Gender and Genotype in Twins and Healthy Controls. *PLOS One* 2009, **4**(8):e6767.
 34. Hall JG, Lopez-Rangel E: Embryologic development and monozygotic twinning. *Acta Genet Med Gemellol* 1996, **45**:53-57.
 35. Weksberg R, Shuman C, Caluseriu O, Smith AC, Fei YL, Nishikawa J, Stockley TL, Best L, Chitayat D, Olney A, Ives E, Schneider A, Bestor TH, Li M, Sadowski P, Squire J: Discordant KCNQ10T1 imprinting in sets of monozygotic twins discordant for Beckwith-Wiedemann syndrome. *Hum Mol Genet* 2002, **11**:1317-1325.
 36. Xie T, Ho SL, Ramsden D: Characterization and implications of estrogenic down-regulation of human catechol-o-methyltransferase gene transcription. *Mol Pharmacol* 1999, **56**:31-38.
 37. Jiang H, Xie T, Ramsden DB, Ho SL: Human catechol-o-methyltransferase down-regulation by estradiol. *Neuropharmacology* 2003, **45**:1011-1018.
 38. Weisz J, Fritz-Wolz G, Clawson GA, Benedict CM, Abendroth C, Creveling CR: Induction of nuclear catechol-O-methyltransferase by estrogens in hamster kidney: implications for estrogen-induced renal cancer. *Carcinogenesis* 1998, **19**:1307-1312.

Pre-publication history

The pre-publication history for this paper can be accessed here:
<http://www.biomedcentral.com/1471-2350/12/115/prepub>

doi:10.1186/1471-2350-12-115

Cite this article as: Schreiner et al.: Association of COMT genotypes with 5-COMT promoter methylation in growth-discordant monozygotic twins and healthy adults. *BMC Medical Genetics* 2011 **12**:115.

Submit your next manuscript to BioMed Central
and take full advantage of:

- Convenient online submission
- Thorough peer review
- No space constraints or color figure charges
- Immediate publication on acceptance
- Inclusion in PubMed, CAS, Scopus and Google Scholar
- Research which is freely available for redistribution

Submit your manuscript at
www.biomedcentral.com/submit

