

**Hans-Ulrich Derlien
Stefan Frank
Silke Heinemann
Stefan Lock**

**THE GERMAN PUBLIC SERVICE -
STRUCTURE AND STATISTICS**



Verwaltungswissenschaftliche Beiträge 35
Universität Bamberg

Verwaltungswissenschaftliche Beiträge
Hg. Prof. Dr. Hans-Ulrich Derlien
Universität Bamberg
Lehrstuhl für Verwaltungswissenschaft
Feldkirchenstraße 21
D-96045 Bamberg

Nr. 35
Second, enlarged edition 2005
Copyright Derlien 2005

Contents	Page
Introduction: Why This Report?	5
I. Structure of the German Public Service	5
II. Statistics of the German Public Service	11
1. Total Public Employment	12
1.1 Total Public Employment, Population and Labor Force Ratios, 1950-2002	
1.2 Core Public Administration and Semi-State Employment, 1950-2002	
1.3 Full- and Part-Time Employment, 1950-2002	
1.4 Public Service System, 2002	
2. Public Employment by Level of Government	16
2.1 Public Employment by Level of Government, 1950-2002	
2.2 Federal Departmental Staff, 2003	
2.3 Chancellor's Office Personnel, 1949-2003	
2.4 Personnel by Federal Government Branch, 2003	
2.5 State Personnel by Land, 1991-2002	
2.6 Local Government Personnel by Land, 1991-2002	
2.7 Population Ratios of State and Local Government Employment, 1991-2002	
2.8 Administrative Units of Länder, 2002	
2.9 Local Government Employment, 1970-2002	
3. Public Employment by Task Area and Level of Government	25
3.1a Total Employment by Task Area, 1960-2002	
3.1b Relative Employment Strength of Task Areas, 1960 - 2002	
3.2 General Administration, 1960-2002	
3.3 Defense, 1960-2002	
3.4 Police, Security and Public Order, 1960-2002	
3.5 Justice and Penitentiary Personnel, 1960-2002	
3.6 Education and Research, 1960-2002	
3.7 Social Services, 1960-2002	
3.8 Health, Environment and Recreation, 1960-2002	
3.9 Agriculture and Forestry, 1960-2002	
3.10 Housing, Land Use Regulation and Community Services, 1960-2002	
3.11 Transportation and Communication, 1960-2002	
3.12 Federal Postal Services, 1950-1994	
3.13 Federal Railways, 1950-2002	
3.14 Public Enterprises, 1960-2002	
3.15 Economic Services, 1960-2002	
3.16 Citizens per Public Official, by Task Area, 1960-2002	

4. Status Groups	42
4.1 Public Employment by Status Group, 1950-2002	
4.2 Public Employment by Status Group and Level of Govt., 1950-2002	
4.3 Federal Employment by Status Group, 1950-2002	
4.4 General Administration by Status Group, 1960-2002	
4.5 Police, Security and Public Order by Status Group, 1960-2002	
4.6 Justice and Penitentiary Personnel by Status Group, 1960-2002	
4.7 Education and Research by Status Group, 1960-2002	
4.8 Social Service Personnel by Status Group, 1960 -2002	
4.9 Health, Environment and Recreation by Status Group, 1960-2002	
5. Career Groups	51
5.1 Career Groups by Status Group, 1960-2002	
5.2 Career Groups at the Federal Level, 1960-2002	
5.3 Career Groups in Länder Administration, 1960-2002	
5.4 Career Groups in Local Government, 1960-2002	
5.5 Higher Civil Service by Salary Group and Level of Government, 2002	
6. Part-Time Employment	57
6.1 Part-Time Employment by Level of Government, 1950-1996	
6.2 Part-Time Employment by Policy Area, 1986-1996	
6.3 Part-Time Employment by Status Group, 1950-1996	
6.4 Part Time I and II Employment in Core Public Service, 1950-1996	
7. Female Employment	61
7.1 Female Employment by Level of Government, 1960-2002	
7.2 Female Employment by Policy Area, 1986-2002	
7.3 Female Employment by Status Group, 1960-2002	
7.4 Female Part-Time Employment by Status Group, 1960-2002	
7.5 Female Employment by Career Group, 1960-2002	
7.6 Structure of Female Public Service Employment, 2002	
8. Personnel Expenditure	67
8.1 Task areas by personnel and expenditures in Germany, 2000	
8.2 Personnel Expenditure in Public Budgets, 1992-1999	
8.3 Expenditures for Pensions 1970-1999	
8.4 Types of Pension Recipients, 2003	
8.5 Pension Recipients by Level of Government, 2003	
Appendix: Definition of Task Areas	71

Introduction: Why This Report?

This report grew out of various needs. First, the aim to demonstrate undergraduate students the differentiation of the German public service necessitated the development of the multi-dimensional graph we repeatedly employ here (see 1.4). Second, international scientific exchange made it clear that the German public service system is difficult to comprehend for foreign experts, too. Third, a comparative project carried through with Professor B. Guy Peters, financed by the Transcoop Program of the Humboldt Foundation and a matching fund of the University of Pittsburgh¹, induced us to broaden the data base and to edit the German data in English in 1998. The following 10 country study is in its final stage for publication with Edgar Elgar Publisher.

The statistical sources of this volume are the periodic publications by the federal statistical office (Statistisches Bundesamt)², unless indicated otherwise.³ Statistical transformation, percentage calculation, and Tables are our own product.

We are grateful to Gisela Baumgärtner for her patience and proficiency in harmonizing the Tables and bringing the text into reproducible shape. Since the first edition⁴, Markus Karbaum and Meike Ullrich did an update during the previous years.

In the following we give an outline of the formal structure of the German Public service system with some comments on the empirical data presented in section II. Interpretations contained in Derlien/Peters (footnote 1) should be seen as a more detailed context of the following observations.

I. Structure of German Public Service

1. Total Public Employment

We start with the inspection of the long-term trend since the inception of the Federal Republic of Germany. Data for the pre-1950 development are available only at irregular intervals⁵. The time series were produced by the Statistisches Bundesamt with slight

¹ See *Hans-Ulrich Derlien/B.Guy Peters* 1998. Who works for Government and what do they do? Universität Bamberg: Verwaltungswissenschaftliche Beiträge 32.

² In particular Fachserie 14, Reihe 6 "Personal im öffentlichen Dienst", edited by Statistisches Bundesamt, Wiesbaden, also available via Internet: <http://www.destatis.de>.

In 1999 the Federal Ministry of the Interior published a similar volume; see Federal Ministry of the Interior 1999. The public service in Germany, Berlin. A second, revised edition is available at <http://www.bmi.bund.de>.

⁴ *Hans-Ulrich Derlien/ Silke Heinemann/ Stefan Lock* 1998. The German Public Service Structure and Statistics. Bamberger verwaltungswissenschaftliche Beiträge 34, 1998.

⁵ *Bernd Wunder* 1986. Geschichte der Bürokratie in Deutschland. Frankfurt: Suhrkamp, 130; *Thomas Ellwein/Ralf Zoll* 1973. Zur Entwicklung der öffentlichen Aufgaben in der Bundesrepublik Deutschland, in: Studienkommission für die Reform des öffentlichen Dienstrechts Bd. 8. Baden-Baden: Nomos, 201-345; *Peter Flora* 1983. State, Economy and Society in Western Europe 1815-

deviations from the annual publications. After 1990, the data comprise western and eastern Germany. Tables include professional *military personnel* unless mentioned otherwise. Furthermore, in Germany the *judiciary* is summarized in the fiscal statistics as part of public administration.

Between 1950 and 1990, total employment increased by 115 percent, with the highest growth rates during the decade 1950-60 (38 percent). After national unification in 1990 another 37 percent increase occurred; by 2002, the population ratio was back though to where it was in 1960 (5.8 percent) or 58 public servants per 1000 inhabitants (Table 1.1)⁶. As a percentage of the labor force⁷, public employment moved between 16 and 17 percent since the early 1970s, with a short-term increase after unification and considerable downsizing after privatization of railways and postal services in 1994/5.

Semi-state employment (mittelbare Staatsverwaltung) is about 5 percent of total public employment, first of all in self-governing public pension and health care funds (public corporations, Körperschaften) as well as in the labor market administration (Table 1.2). Since 1994, their share has relatively grown (587,000 or 12.4 percent in 2002). Employment in semi-state agencies and corporations is often not included in the following Tables, but data refer to core public administration (unmittelbare Staatsverwaltung).

Total public service growth conceals a substantial portion (some 25 percent) of *part-time* employment in the public sector that has emerged since 1950 (Table 1.3; see also section 6).

Graph 1.4 outlines the structural dimensions and the proportions between sub-categories of the public service system (2002) that are to be inspected more closely below.

2. Employment by Level of Government

The Federal Republic of Germany is not a unitary state but a system with vertical separation of powers between federal and Länder governments. Local governments, although legally part of the Länder, are constitutionally granted autonomy "within the confines of the laws" (Article 28 Section 2 Basic Law). Their political organization (constitution) is legislated by the individual Länder; thus, there is some degree of variation of formal structures between units at the lower levels of government. German federalism is "Vollzugsföderalismus", or *implementation federalism*, with almost all federal laws being implemented through the Länder and ultimately through local governments.

Federal government was the biggest employer in 1950 (40 percent) but is the smallest in 2002 (13 percent). Half of the public service is Land personnel, one third is employed by local governments (Table 2.1).

The federal level is constituted by the federal government and its 15 to 18 ministries and 20,000 (2003, Table 2.2) public servants in Bonn and Berlin. Departmental staff and

1975, Vol. I. Frankfurt: Campus, 193-309; *J.P. Cullity* 1967. The Growth of Government Employment in Germany 1882-1950, in: Zeitschrift für die Gesamte Staatswissenschaft 123, 201-217.

⁶ Population figures include foreign residents.

⁷ Labor force (Erwerbspersonen) includes those in labor (Erwerbstätige) plus those seeking labor.

chancellory personnel are displayed in Tables 2.3 and 2.4 for 2003; while the chancellor's office is relatively small (about 500 personnel), the ministry of defense and the department of foreign affairs are the largest departments. The size of the field staff the federal ministries are commanding is contained in Table 2.4 for the year 2003. The data, once again, illustrate that the federal government is hardly involved in policy implementation at the local level. Federal non-governmental institutions, some 50 quasi-autonomous governmental and 250 quasi-autonomous semi-state (predominantly social insurance systems) as well as the five federal courts of justice, the military, (and, until privatization, federal rails and postal services) have traditionally been distributed throughout the country.

As the sources for these Tables indicate, detailed data for the center of federal government is not provided by official statistics.

Tables 2.5 and 2.6 are reflecting East-West difference since 1991 and the considerable down-sizing at the eastern local government level in recent years. Nevertheless, as the population ratios (Table 2.7) show, service density is still considerably higher in eastern Germany than in the western part of the country, but less so at the newly created eastern state than at the local government level.

The administrative structure of the Länder, their regional general purpose authorities (the French prefect system adopted by Prussia) and the system of local government is displayed in Table 2.8. The territorial amalgamations of the 1960s lead to the incorporation of townships/villages into larger units and/or the formation of general purpose associations in rural areas; the adaptation to this structure in the new Länder was though less brutal after 1990. The corresponding distribution of local government personnel is contained in Table 2.9.

3. Task Areas by Level of Government

The manner in which statistics are kept in Germany presents some problems for international comparison. In some policy areas the definitions of categories are special. For example, the category labelled "police and fire" is literally translated from German as "Police, Security and Public Order" and includes: police (federal and Land), emergency services, fire protection, ambulances, construction supervision and zoning enforcement, citizen registration offices, and licensing activities (including passports). Specifications (in German) are contained in the Appendix.

Furthermore, officials working in ministries including the foreign office or in the revenue administration are reported in the "general administration" category rather than in the policy area in which their work occurs. This categorization represents the tradition of the legally-trained, generalist administrator in Germany. This official is expected to have fungible skills that can be applied in any policy area. The general administration category is also a reflection of the doctrine of unity of administration.

Education and research, police and law enforcement as well as public health are the quantitatively most important public task areas, and they are concentrated at the Land level.

4. Status Groups

There are two classes of public servants: those with the traditional public law status of civil servants, who however do not necessarily constitute the administrative elite like in Britain but include also, for instance, policemen; and the historically more recent group of those working under private law contracts, (manual) laborers and (white collar) employees. Whereas positions that are defined as entailing authoritative capacity in the law and order branches (e.g. police and revenue service) must be staffed with *career* civil servants (Article 33 Section 4 Basic Law), the other group(s) are predominantly found in social and health services, in research and in clerical functions (employees) or do physical work, e.g. in local waste disposal. For them *job staffing* is typical. However, often employees are working in jobs that imply authoritative acts and thus should be carried out by civil servants. On the other hand, in the state-operated education system also teachers and professors have civil service status. This classification dates back to the authoritarian state and implies (some) control of the state over material education; it was and is though not undisputed.

In 1973, an unsuccessful attempt was made to harmonize this *dual structure* of the public service and to create a uniform public service, be it by extending public law status to all groups, be it by changing the constitution and abandoning the special status of the civil service.

Table 4.1 shows, despite absolute growth since 1950, the relative decline of the number of civil servants since unification and the ascent of the employee group; public laborers, in particular owing to recent privatizations, are the losers of the long-term historical development.

Civil servants are dominating the personnel structure of federal (in particular since 1994) and Land governments (education, police, general administration). Local government personnel consists, first of all, of employees and, secondly, of laborers (Table 4.2). The loss of both groups at the federal level is a result of privatizing federal railways and the postal service since 1994 (Table 4.3).

The dominance of civil servants in traditional, partly authoritative, state sectors is reflected in Tables 4.4 to 4.7 and contrasts with the social service and health sectors where employees are working overwhelmingly at the Land and local levels (Tables 4.8 and 4.9).

5. Career Groups

There are four categories of public servants corresponding to the hierarchy of educational institutions in Germany and certificates attained there; civil servants and employees are classified the same way by the official statistics, although the latter do not enter a career. First, the university trained *higher civil service* and equivalent employees amount to 18 percent of total personnel (2002). The group below (with A-level certificates, the German Abitur that qualifies for university admission) comprises 36 percent, followed by the next two career groups with 46 percent (Table 5.1). The "simple service" comprises those who have completed primary school (Hauptschule)

after 9 years of attending; this group has almost disappeared owing to upgradings in the past.

The career of each of the four groups consists of *four grades or offices* (Amt) that can be reached through promotion. The second and third grades are normally automatically attained after a certain period without outstanding performance. Furthermore, as a rule, every applicant has to enter the initial grade in her or his respective career group, irrespective of professional experience gathered in the private sector. Exceptions are, of course, necessary and are occasionally made to recruit experts, e.g. highly qualified chemists for designing environmental protection regulations; these persons would then be accepted to the civil service above career group entry level after approval by the federal or Länder civil service commissions.

The higher civil service, although a minority at all three levels of government, is least frequent at the local and federal levels (7 to 8 percent). Owing to the education and university sector, higher (and elevated) civil service status is most frequent at the Land level (Tables 5.2 - 5.4).

6. Part-Time Employment

Part-time employment increased to 27 percent by 2002 (Table 6.1); it was always most widespread at the local and state levels. Education, social and health care are the preferred task areas for part-time employment (Table 6.2). In the civil service preserves of the authoritative state, part-time employment is a recent development (Table 6.3). Table 6.4 distinguishes the diminishing share (2002: 12.5 percent) of those working less than half of the regular working hours.

7. Female Employment

Due to the accession of the female dominated eastern German public service, public service employment became evenly distributed between the sexes in the 1990s; there are though significant imbalances in the public service structure. Part-time employment is female dominated (83 percent in 2002, Table 7.4). Both of these characteristics are closely related at the aggregate level (Graph 7.6). With respect to task area (and thus level of government, Table 7.1) there are though marked differences between female domains (Table 7.2); women are overrepresented in social (80 percent) and health (67 percent) services and in education (61 percent). As civil service status is hindering part-time employment, women are underrepresented in this status group. Finally, female public employment increases the further one moves down the hierarchy of career groups (Table 7.5).

8. Personnel Expenditure

The data show the relative importance of personnel expenditure at the different levels of government. The federal government, although always the biggest spender, carries the relatively smallest burden of personnel costs. Owing to the tremendous costs of transforming eastern Germany, the relative share of personnel expenditure in the federal budget has gone down after 1990; recent reduction of federal personnel, in particular since 1994, so far has hardly decreased the relative position of personnel expenditure.

As the Länder are responsible for administration in the most important policy areas, not only their personnel is the most voluminous in numbers but personnel expenditure is the single most important item in the Länder budgets (well above 40 percent in the West). The statistical category "personnel expenditure", however, includes pensions for retired civil servants (in detail Table 8.3, Graph 8.4, 8.5). The east-west Länder difference is largely due to the fact that the retired GDR state functionaries get their pension from the general (semi-state) insurance fund and not from the current Land budget; furthermore, the number of newly appointed civil servants, who have already retired, is - naturally - very small in the new Länder.

II. Statistics of the German Public Service

Table 1.1: Total Public Employment, Population and Labor Force Ratios, 1950-2002

Year	Public Employment (in 1,000)	as % of Population¹⁾	Public Servants 1,000 Inhabitants	as % of Labor Force²⁾
2002	4,809	5.8	58.2	11.8
2001	4,821	5.8	58.5	11.9
2000	4,909	6.0	59.7	12.0
1999	4,969	6.0	60.5	12.3
1998	5,069	6.2	61.8	12.6
1997	5,164	6.3	63.0	12.9
1996	5,276	6.4	64.4	13.2
1995	5,371	6.6	65.8	13.4
1994	6,094	7.5	74.8	15.1
1993	6,503	8.0	80.1	16.9
1992	6,657	8.3	82.6	16.6
1991	6,738	8.4	84.2	16.8
1990	4,920	7.8	77.8	15.7
1989	4,863	7.8	78.4	16.3
1988	4,876	7.9	79.3	16.4
1987	4,886	8.0	80.0	16.9
1986	4,873	8.0	79.9	16.6
1985	4,845	7.9	79.5	16.7
1984	4,800	7.9	78.5	16.7
1983	4,784	7.8	77.9	16.8
1982	4,767	7.7	77.4	16.8
1981	4,743	7.7	76.9	16.9
1980	4,658	7.6	75.7	16.9
1975	4,419	7.1	71.5	16.4
1970	3,876	6.4	63.9	14.3
1965	3,559	6.1	60.7	13.0
1960	3,152	5.7	56.9	12.0
1950	2,282	4.6	45.7	10.4
<i>% change</i>				
<i>91-2002</i>	<i>-28.6</i>			
<i>1990-91</i>	<i>37.7</i>			
<i>1980-90</i>	<i>5.6</i>			
<i>1970-80</i>	<i>20.2</i>			
<i>1960-70</i>	<i>23.0</i>			
<i>1950-60</i>	<i>38.1</i>			
<i>1950-90</i>	<i>115.6</i>			
<i>1950-02</i>	<i>110.7</i>			

Source: Population according to: Statistisches Bundesamt. Statistische Jahrbücher für die Bundesrepublik Deutschland; <http://www.destatis.de>, 01.10.2004.

¹⁾ Population is defined as German plus foreign inhabitants.

²⁾ Labor force is defined as those in labor plus those seeking labor, the problem being to determine who is seeking labor (labor office registration and/ or census data).

Table 1.2: Core Public Administration and Semi-State Employment (in 1,000), 1950-2002

Year	Core Public Adm.	% of Total	Semi-State	% of Total	Total
2002	4,221	87.6	587	12.4	4,821
2001	4,276	88.8	545	11.2	4,809
2000	4,421	90.1	488	9.9	4,909
1999	4,512	90.8	457	9.2	4,969
1998	4,619	91.1	449	8.9	5,069
1997	4,713	91.3	450	8.7	5,164
1996	4,814	91.2	463	8.8	5,276
1995	4,921	91.6	450	8.4	5,371
1994	5,666	93.0	428	7.0	6,094
1993	6,115	94.0	388	6.0	6,503
1992	6,305	94.7	352	5.3	6,657
1991	6,413	95.2	325	4.8	6,738
1990	4,656	94.6	264	5.4	4,920
1989	4,606	94.7	257	5.3	4,863
1988	4,620	94.7	256	5.3	4,876
1987	4,631	94.8	255	5.2	4,886
1986	4,622	94.8	251	5.2	4,873
1985	4,599	94.9	246	5.1	4,845
1984	4,558	95.0	242	5.0	4,800
1983	4,543	95.0	241	5.0	4,784
1982	4,532	95.1	235	4.9	4,767
1981	4,512	95.1	231	4.9	4,743
1980	4,431	95.1	227	4.9	4,658
1975	4,201	95.1	218	4.9	4,419
1970	3,693	95.3	183	4.7	3,876
1965	3,397	95.5	162	4.5	3,559
1960	3,004	95.3	148	4.7	3,152
1950	2,200	96.4	82	3.6	2,282
<i>% change</i>					
<i>91-2002</i>	<i>-34.2</i>		<i>80.6</i>		<i>-28.5</i>
<i>91-2000</i>	<i>-31.1</i>		<i>50.2</i>		<i>-27.1</i>
<i>1990-91</i>	<i>37.7</i>		<i>23.1</i>		<i>37.0</i>
<i>1980-90</i>	<i>4.8</i>		<i>16.3</i>		<i>5.6</i>
<i>1970-80</i>	<i>20.3</i>		<i>24.0</i>		<i>20.2</i>
<i>1960-70</i>	<i>22.9</i>		<i>23.6</i>		<i>23.0</i>
<i>1950-60</i>	<i>36.6</i>		<i>80.5</i>		<i>38.1</i>
<i>1950-90</i>	<i>111.6</i>		<i>221.9</i>		<i>115.6</i>

Table 1.3: Full- and Part-Time Employment (in 1,000), 1950-2002

Year	Total Employment	full-time	%	part-time	%
2002	4,809	3,521	73.2	1,288	26.8
2001	4,821	3,584	74.3	1,236	25.7
2000	4,909	3,697	75.3	1,212	24.7
1999	4,969	3,805	76.6	1,164	23.4
1998	5,069	3,953	78.0	1,116	22.0
1997	5,164	4,085	79.1	1,079	20.9
1996	5,276	4,207	79.7	1,069	20.3
1995	5,371	4,303	80.1	1,068	19.9
1994	6,094	4,920	80.7	1,174	19.3
1993	6,503	5,369	82.6	1,134	17.4
1992	6,657	5,579	83.8	1,078	16.2
1991	6,738	5,671	84.2	1,067	15.8
1990	4,920	4,048	82.3	872	17.7
1989	4,863	4,021	82.7	842	17.3
1988	4,876	4,059	83.2	817	16.8
1987	4,886	4,089	83.7	797	16.3
1986	4,873	4,075	83.6	798	16.4
1985	4,845	4,075	84.1	770	15.9
1984	4,800	4,068	84.7	732	15.3
1983	4,784	4,082	85.3	702	14.7
1982	4,767	4,086	85.7	681	14.3
1981	4,743	4,091	86.2	652	13.8
1980	4,658	4,039	86.7	619	13.3
1975	4,419	3,904	88.3	515	11.7
1970	3,876	3,498	90.2	378	9.8
1965	3,559	3,288	92.4	271	7.6
1960	3,152	2,958	93.8	194	6.2
1950	2,282	2,215	97.1	67	2.9
<i>% change</i>					
<i>91-2002</i>	<i>-28.7</i>	<i>-38.0</i>		<i>20.7</i>	
<i>91-2000</i>	<i>-27.1</i>	<i>-34.8</i>		<i>13.6</i>	
<i>1990-91</i>	<i>36.9</i>	<i>40.1</i>		<i>22.4</i>	
<i>1980-90</i>	<i>5.6</i>	<i>0.2</i>		<i>40.9</i>	
<i>1970-80</i>	<i>20.2</i>	<i>15.57</i>		<i>63.8</i>	
<i>1960-70</i>	<i>23.0</i>	<i>18.3</i>		<i>94.8</i>	
<i>1950-60</i>	<i>38.1</i>	<i>33.5</i>		<i>189.6</i>	
<i>1950-90</i>	<i>115.6</i>	<i>82.8</i>		<i>1201.5</i>	

Graph 1.4: Public Service System, 2002

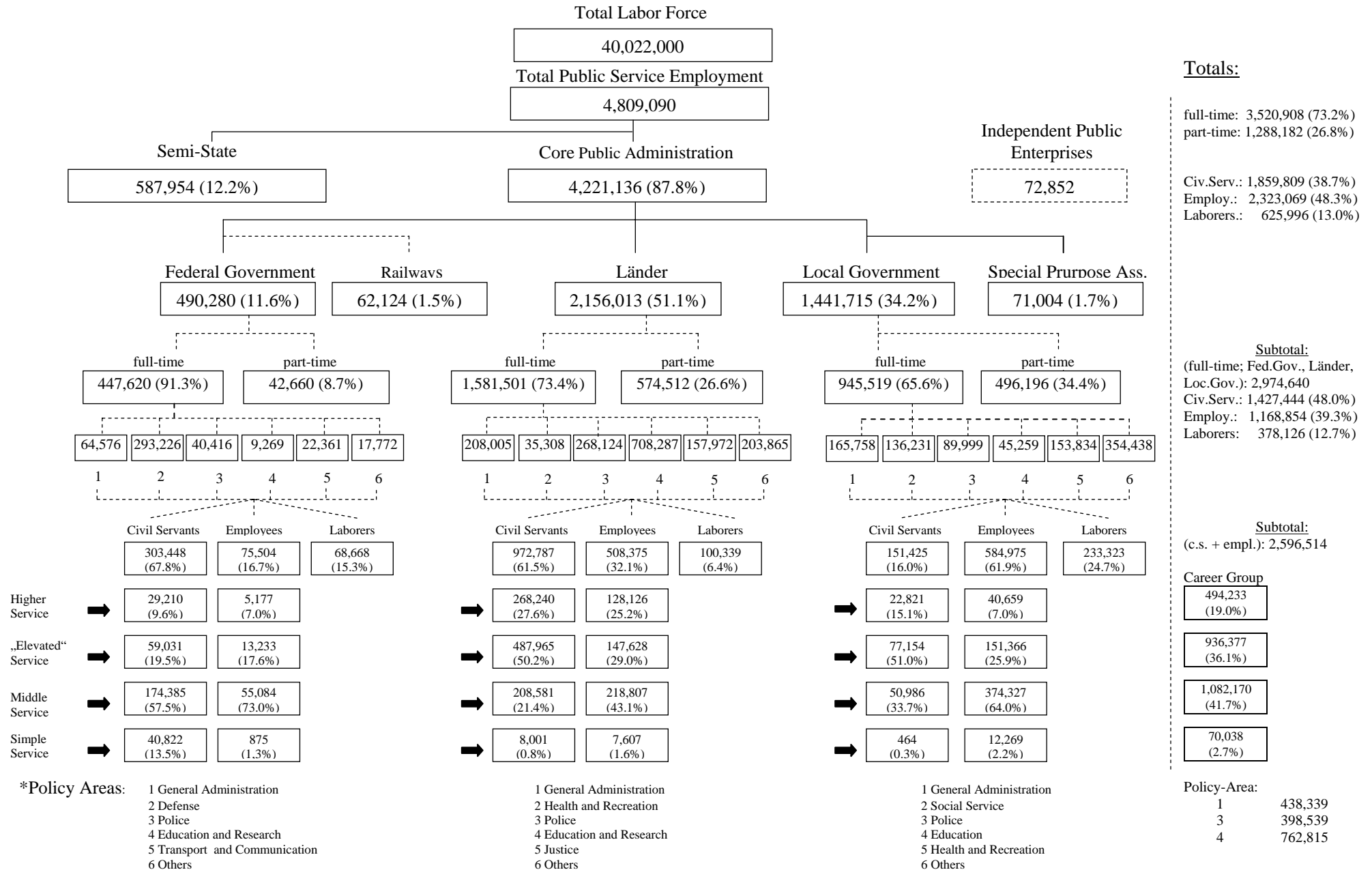


Table 2.1: Public Employment by Level of Government, 1950-2002¹⁾

Year	Total	Federal	of these: Military ²⁾	of these: Railways	of these: Post, etc.	% of Total	Länder	% of Total	Local ³⁾	% of Total
2002	4,221,136	552,404	185,221	62,124	--	13.1	2,156,013	51.1	1,512,719	35.8
2001	4,276,068	560,143	184,561	66,360	--	13.1	2,178,854	51.0	1,537,071	35.9
2000	4,420,900	575,600	186,600	73,600	--	13.0	2,273,500	51.4	1,572,000	35.6
1999	4,512,100	588,700	189,800	78,400	--	13.0	2,313,700	51.3	1,609,700	35.7
1998	4,619,300	607,700	191,000	91,700	--	13.2	2,363,100	51.2	1,648,500	35.7
1997	4,713,300	628,000	191,800	101,600	--	13.3	2,401,900	51.0	1,683,300	35.7
1996	4,813,900	644,700	190,700	111,600	--	13.4	2,429,900	50.5	1,739,300	36.1
1995	4,921,100	666,100	194,000	119,800	--	13.5	2,453,400	49.9	1,801,600	36.6
1994	5,666,600	1,311,400	213,000	128,500	605,000	23.1	2,482,000	43.8	1,873,200	33.1
1993	6,115,000	1,657,500	231,000	417,700	636,800	27.1	2,510,700	41.1	1,946,800	31.8
1992	6,305,100	1,700,300	246,000	433,900	641,500	27.0	2,531,300	40.1	2,073,500	32.9
1991	6,412,400	1,789,000	257,000	473,800	663,500	27.9	2,572,000	40.1	2,051,400	32.0
1990	4,656,200	1,363,200	244,000	249,800	537,200	29.3	1,935,000	41.6	1,358,000	29.2
1989	4,606,600	1,368,100	247,000	257,800	531,400	29.7	1,911,500	41.5	1,327,000	28.8
1988	4,620,600	1,379,100	250,000	268,800	527,800	29.8	1,914,600	41.4	1,326,900	28.7
1987	4,630,100	1,394,200	251,000	279,100	531,600	30.1	1,910,000	41.2	1,325,900	28.6
1986	4,622,200	1,396,900	249,000	288,100	529,200	30.2	1,921,700	41.6	1,303,600	28.2
1985	4,598,900	1,415,100	250,000	297,800	536,900	30.8	1,914,800	41.6	1,269,000	27.6
1984	4,558,200	1,419,000	247,000	310,100	531,200	31.1	1,895,700	41.6	1,243,500	27.3
1983	4,543,300	1,425,900	244,000	323,700	526,400	31.4	1,888,000	41.6	1,229,400	27.1
1982	4,531,900	1,428,500	235,000	335,600	525,800	31.5	1,873,100	41.3	1,230,300	27.2
1981	4,511,700	1,430,900	245,000	341,900	512,100	31.7	1,853,200	41.1	1,227,600	27.2
1980	4,430,300	1,410,000	237,000	341,500	501,800	31.8	1,823,400	41.2	1,196,900	27.0
1975	4,201,500	1,480,400	235,000	422,800	489,400	35.2	1,623,800	38.6	1,097,300	26.2
1970	3,692,600	1,410,900	232,000	409,200	457,600	38.2	1,334,300	36.1	947,400	25.7
1965	3,396,900	1,392,400	208,000	462,400	430,500	41.0	1,152,500	33.9	852,000	25.1
1960	3,004,100	1,266,800	150,000	495,700	407,000	42.2	1,003,800	33.4	733,500	24.4
1955	2,510,100	979,400		503,300	359,200	39.0	881,900	35.1	648,800	25.9
1950	2,199,900	885,900		528,800	293,800	40.3	740,000	33.6	574,000	26.1
% change										
91-2002	-34.3	-69.1					-16.2		-26.3	
91-2000	-31.1	-67.8					-11.6		-23.4	
1990-91	37.7	31.2					32.9		51.1	
1980-90	5.1	-3.3					6.1		13.5	
1970-80	20.0	-0.1					36.7		26.3	
1960-70	22.9	11.4					32.9		29.2	
1950-60	36.6	43.0					35.6		27.8	
1950-90	111.6	53.8					161.5		136.6	

¹⁾ "Unmittelbarer öffentlicher Dienst" (core public administration)

²⁾ without conscripts

³⁾ including local special purpose associations

Tab. 2.2: Federal Departmental Staff, 2003

Department	Total	Civil Servants	% of Total	higher Civil Servants	% of Total	1) Section Heads	2) Subdivision Heads	3) Division Heads	4) State Secretaries
Chancellory	464	277	59.7	140	30.2	48	14	6	1
Foreign Affairs	2,190	1,466	66.9	516	23.6	123	24	14	2
Interior	1,521	1,131	74.4	473	31.1	132	19	10	2
Justice	1,599	962	60.2	235	14.7	61	14	6	1
Finance	2,133	1,520	71.3	637	29.9	163	30	10	3
Economics/Labor	2,036	1,276	62.7	606	29.8	179	29	12	4
Food/Agriculture	954	716	75.1	332	34.8	86	14	6	1
Traffic/Housing	1,628	971	59.6	531	32.6	116	27	8	2
Defense	2,502	1,535	74.9	506	20.2	139	23	8	2
Health	1,191	690	57.9	330	27.7	103	18	8	2
Environment	719	428	59.5	246	34.2	63	13	6	1
Family/Females	441	301	68.3	133	30.2	50	9	4	1
Developm. Aid	591	380	64.3	204	34.5	58	8	3	1
Research	920	580	63.0	324	35.2	79	15	7	2
Fed. President	161	84	52.2	33	20.5	15	2	3	1
Accounting Off.	705	600	85.1	204	28.9	82	11	1	1
Total	19,755	12,917	65.9⁵⁾	5,450	28.6⁵⁾	1,497	270	112	27

1) Besoldungsgruppe B3

2) Besoldungsgruppe B6 (B7, B5)

3) Besoldungsgruppe B9

4) Besoldungsgruppe B11

5) Durchschnittliche prozentuale Anteile

Source: Federal Budget, 2003 (positions)

Table 2.3: Chancellor's Office Personnel, 1949-2003*

Year	Total	Civil Servants	% of Total	higher Civil Servants	% of c.s.	Section Heads	Subdivision Heads	Division Heads	State Secretaries
2003	464	277	59.7	140	30.2	48	14	6	1
2002	480	284	59.2	145	30.2	51	15	6	1
2001	527	297	56.4	149	50.2	53	16	6	1
2000	530	297	56.0	152	51.2	55	16	6	1
1999	512	298	58.2	153	51.3	55	17	6	1
1998	482	280	58.1	139	49.6	51	14	6	-
1997	483	276	57.1	133	48.2	50	14	6	-
1996	491	281	57.2	134	47.7	49	14	6	-
1995	503	287	57.1	137	47.7	50	14	6	-
1994	510	289	56.7	137	47.4	49	14	6	-
1993	527	299	56.7	140	46.8	51	14	6	-
1992	529	307	58.0	148	48.2	52	15	6	-
1991	519	299	57.8	143	47.8	50	15	6	-
1990	485	275	56.7	131	47.6	46	14	5	1
1989	473	268	56.7	126	47.0	44	14	5	1
1988	481	271	56.3	128	47.2	46	14	5	1
1987	484	274	56.6	129	47.1	46	15	5	1
1986	482	273	56.6	128	46.9	48	12	5	1
1985	483	273	56.5	128	46.9	47	12	5	1
1984	477	267	56.0	124	46.4	45	11	5	1
1983	481	267	55.5	124	46.4	44	11	6	1
1982	470	261	55.5	118	45.2	39	11	5	1
1981	477	265	55.6	120	45.3	39	11	5	1
1980	477	265	55.6	120	45.3	40	11	5	1
1979	477	265	55.6	120	45.3	40	11	5	1
1978	474	265	55.9	120	45.3	40	11	5	1
1977	459	252	54.9	117	46.4	40	11	5	1
1976	454	247	54.4	121	49.0	40	13	4	2
1975	442	238	53.8	115	48.3	36	13	4	2
1974	431	229	53.1	108	47.2	35	12	4	1
1973	435	231	53.1	109	47.2	35	12	4	1
1972	410	207	50.5	104	50.2	32	12	4	1
1971	396	192	48.5	101	52.6	31	12	4	1
1970	395	192	48.6	101	52.6	30	12	4	1
1969	261	133	51.0	66	49.6	17	4	4	2
1968	256	132	51.6	66	50.0	17	4	4	2
1967	246	122	49.6	56	45.9	14	2	3	3
1966	216	110	50.9	48	43.6	13	3	3	2
1965	210	108	51.4	48	44.4	13	2	3	2
1964	190	101	53.2	45	44.6	11	3	2	2
1963	167	86	51.5	36	41.9	8	3	2	2
1962	168	84	50.0	35	41.7	8	3	2	1
1961	168	84	50.0	36	42.9	9	3	2	1
1960	170	82	48.2	36	43.9	9	3	2	1
1959	170	82	48.2	36	43.9	9	3	2	1
1958	169	81	47.9	35	43.2	8	3	2	1
1957	163	78	47.9	34	43.6	8	3	1	1
1956	156	73	46.8	30	41.1	7	3	1	1
1955	150	70	46.7	28	40.0	6	3	1	1
1954	148	67	45.3	28	41.8	6	3	1	1
1953	144	61	42.4	27	44.3	6	3	1	1
1952	144	61	42.4	27	44.3	6	3	1	1
1951	114	44	38.6	20	45.5	7	-	1	1
1950	114	44	38.6	20	45.5	7	-	1	1
1949	107	37	34.6	16	43.2	5	-	1	1

* Positions according to annual federal budgets

Table 2.4: Personnel by Federal Government Branch, 2003

Department	Personnel	
	abs.	%
Defense	121,262	42.6%
Economic Affairs and Labour	9,281	3.3%
Economic Co-Operation	607	0.2%
Education and Science	937	0.3%
Environment, Nature Protection, Reactor Safety	2,557	0.9%
Finance	47,357	16.6%
Food, Agriculture and Forestry	4,567	1.6%
Foreign Affairs	6,937	2.4%
Housing, Transport	25,866	9.1%
Interior	56,102	19.7%
Justice	4,106	1.4%
Health and Social Welfare	3,593	1.3%
Youth, Family, Women	1,453	0.5%
Total	284,625	100%

Source: <http://www.bundesfinanzministerium.de/bundeshaushalt2003/index.html>, 01.10.2004.

Table 2.5: State Personnel by Land, 1991-2002

	1991	1992	1993	1994	1996	1998	2000	2002	difference 1991-2002 ³	
									abs.	%
East Berlin*	132,343	127,313	113,053	85,724	74,920	--	--	--	--	--
Brandenburg	82,500	73,766	70,032	76,421	76,259	74,896	72,829	71,143	-11,357	-13.8
Mecklenb.-Vorp.	69,800	63,021	58,185	58,742	58,379	57,641	56,063	54,306	-15,494	-22.2
Sachsen	166,566	135,880	130,999	134,585	135,203	130,641	119,442	116,660	-49,906	-30.0
Sachsen-Anhalt	95,712	93,815	92,679	93,482	90,406	88,324	83,345	79,154	-16,558	-17.3
Thüringen	87,547	89,982	87,439	85,639	84,536	78,913	76,940	71,939	-15,608	-17.8
Total East¹	634,468	583,777	556,387	534,593	519,703	430,415	408,619	393,202	-241,266	-38.0
Baden-Württemb.	270,625	274,348	278,994	286,595	281,996	278,868	255,570	262,334	-8,291	-3.1
Bayern	291,712	296,179	300,330	303,848	304,928	307,426	306,703	308,696	16,984	5.8
West Berlin*	206,874	204,708	202,545	183,031	177,919	236,513	225,999	162,949	-43,925	-21.2
Bremen*	48,699	48,977	48,314	48,116	37,890	36,012	42,911	42,139	-6,560	-13.5
Hamburg*	128,710	126,168	125,174	125,344	99,024	89,406	79,155	70,842	-57,868	-45.0
Hessen	157,819	160,323	166,946	165,362	165,611	164,986	155,030	126,034	-31,785	-19.1
Niedersachsen	212,924	211,959	213,461	216,518	213,852	208,290	203,554	206,279	-6,645	-3.1
Nordrhein-Westf.	410,088	413,765	410,932	409,958	418,628	416,150	412,998	397,617	-12,471	3.0
Rheinland-Pfalz	104,179	105,810	104,080	105,079	106,155	96,349	93,225	96,348	-7,831	-7.5
Saarland	34,125	33,878	31,190	31,180	31,013	29,679	29,412	29,222	-4,903	-14.4
Schleswig-Holstein	71,753	71,426	71,771	72,350	73,165	69,020	60,081	60,351	-11,402	-15.9
Total West²	1,937,508	1,947,541	1,953,737	1,947,381	1,910,181	1,932,699	1,864,638	1,762,811	-174,697	-10.0

* Länder and local level employment are not differentiated in official statistics

¹ Since 1997 without East Berlin

² Since 1997 with East Berlin

³ Base for Berlin 1991: East + West; Total East 1991 without East Berlin, Total West with East Berlin

Table 2.6: Local Government Personnel by Land, 1991-2002

	1991	1992	1993	1994	1996	1998	2000	2002	difference 1991-2002	
									abs.	%
Brandenburg	131,486	121,046	98,527	84,763	70,441	62,599	57,801	51,773	-79,713	-60.7
Mecklenb.-Vorp.	96,474	84,836	65,538	58,095	46,394	40,986	38,366	35,189	-61,285	-63.5
Sachsen	200,306	210,311	178,320	156,076	137,655	117,884	106,398	94,300	-106,006	-52.9
Sachsen-Anhalt	129,464	130,901	110,893	100,507	86,968	77,349	71,783	65,795	-63,669	-49.2
Thüringen	103,775	107,644	85,777	76,636	65,557	55,664	50,450	43,911	-59,864	-57.7
Total East	661,505	644,733	539,055	520,307	407,015	354,482	324,798	290,968	-370,537	-56.0
Baden-Württemb.	247,344	255,263	254,502	248,947	232,808	218,175	212,116	215,638	-31,706	-12.8
Bayern	260,859	266,839	260,962	264,981	268,910	266,761	246,378	244,942	-15,917	-6.1
Hessen	146,807	151,209	151,534	147,197	128,462	125,019	122,650	118,946	-27,861	-19.0
Niedersachsen	165,901	169,645	167,233	167,925	160,959	158,844	149,939	143,569	-22,332	-13.5
Nordrhein-Westf.	364,815	365,706	362,751	356,727	339,519	326,301	319,740	304,516	-60,299	-16.5
Rheinland-Pfalz	69,399	71,249	70,126	69,005	64,018	63,941	61,382	62,371	-7,028	-10.1
Saarland	18,994	19,060	17,327	18,083	14,264	14,568	14,233	13,784	-5,210	-27.4
Schleswig-Holstein	60,232	61,486	60,616	57,496	55,534	52,656	50,975	46,981	-13,251	-22.0
Total West	1,334,351	1,360,457	1,345,051	1,330,361	1,264,474	1,226,265	1,177,413	1,150,747	-183,604	-13.8

Table 2.7: Population Ratios of State and Local Government Employment, 1991-2002

	Employment per 1,000 Inhabitants																					Difference 1991-2002 ¹⁾		
	1991			1993			1995			1997			1999			2001			2002			State	Local	Total
	State	Local	Total	State	Local	Total	State	Local	Total	State	Local	Total	State	Local	Total	State	Local	Total	State	Local	Total			
Baden-Württemb.	27.3	25.5	52.8	27.4	25.5	52.9	28.0	23.6	51.6	27.0	21.9	48.9	26.8	20.3	47.1	24.3	20.1	44.4	24.6	20.2	44.8	-2.7	-5.3	-8.0
Bayern	25.3	25.0	50.3	25.4	24.4	49.9	25.4	24.6	50.0	25.8	22.1	47.9	25.3	21.4	46.7	24.9	19.9	44.8	24.9	19.8	44.7	-0.4	-5.2	-5.6
Hessen	27.2	25.9	53.1	28.1	26.0	54.1	27.5	23.9	51.5	27.4	20.9	48.3	26.3	20.5	46.8	20.2	19.8	40.0	20.7	19.5	40.2	-6.5	-6.4	-11.9
Niedersachsen	28.6	22.9	51.5	28.0	22.5	50.5	27.9	21.9	49.8	26.9	20.6	47.5	26.3	19.6	45.9	25.8	18.3	44.1	25.8	18.0	43.8	-2.8	-4.9	-7.7
Nordrhein-Westf.	23.5	21.6	45.1	23.2	21.1	44.3	23.2	20.1	43.3	23.3	18.4	41.7	23.0	17.9	40.9	21.9	17.3	39.2	22.0	16.8	38.8	-1.5	-4.8	-6.3
Rheinland-Pfalz	27.5	18.8	46.3	26.7	18.5	45.1	26.6	17.5	44.0	25.7	16.2	41.9	23.3	15.5	38.8	23.3	15.4	38.7	23.7	15.4	39.1	-3.8	-3.4	-7.2
Saarland	31.7	18.2	49.9	28.7	16.4	45.2	28.6	13.9	42.5	27.4	13.4	40.8	27.6	13.0	39.6	27.2	13.4	40.6	27.4	12.9	40.3	-4.3	-5.3	-9.6
Schleswig-Holstein	27.2	23.9	51.1	26.9	23.6	50.5	27.0	22.3	49.2	25.3	19.5	44.8	22.3	18.4	40.7	21.5	18.2	39.7	25.2	19.6	44.8	-2.0	-4.3	-6.3
Brandenburg	32.2	51.3	83.5	29.1	38.8	67.8	30.1	30.5	60.6	29.5	25.4	54.9	28.0	23.0	51.0	27.7	21.3	49.0	27.5	20.0	47.5	-4.7	-31.3	-36.0
Mecklenb.-Vorp.	36.6	50.6	87.2	31.4	35.4	66.8	32.0	28.8	60.8	32.1	24.1	56.2	31.7	21.8	53.5	30.9	20.4	51.3	31.1	20.2	54.3	-5.5	-30.4	-32.9
Sachsen	35.3	42.4	77.7	28.3	38.6	66.9	29.8	32.8	62.5	29.2	27.4	56.6	28.8	24.8	53.6	26.7	23.0	49.7	26.8	21.7	48.5	-8.5	-20.7	-29.2
Sachsen-Anhalt	33.6	45.5	79.0	33.2	39.8	73.0	33.6	34.1	67.7	33.3	29.4	62.7	32.3	28.3	60.6	31.2	26.4	57.6	31.1	25.8	56.9	-2.5	-19.7	-22.1
Thüringen	33.8	40.1	73.8	34.5	33.8	68.2	33.9	29.4	63.3	33.0	23.0	56.0	31.6	21.2	52.8	32.5	19.5	52.0	30.1	18.4	48.5	-3.7	-21.7	-25.3
East Berlin			103.3			87.0			61.0															
West Berlin			95.6			93.1			82.7															
Berlin Total											70.2			66.4			57.6			48.0			-22.2	
Bremen			71.3			70.6			70.9			57.4			51.0			60.5			63.6			-7.7
Hamburg			77.5			73.7			59.1			55.6			47.1			44.6			41.0			-36.5

Berlin 1997 – 2002

Table 2.8: Administrative Units of Länder, 2002

Land	Regional Authorities	Cities	Counties	Townships	General Purpose Associations
Berlin	-	1	-	1	-
Bremen	-	2	-	2	-
Hamburg	-	1	-	1	-
Baden-Württemberg	4	9	35	1,102	272
Bayern	7	25	71	2,031	319
Hessen	3	5	21	421	-
Niedersachsen	4	9	38	1,017	140
Nordrhein-Westfalen	5	23	31	373	-
Rheinland-Pfalz	3	12	24	2,294	163
Saarland	-	-	6	52	-
Schleswig-Holstein	-	4	11	1,126	119
Total West	26	91	237	8,420	1,012
2002	33	137	425	24,371	-
1960					
Brandenburg	-	4	14	1,088	130
Mecklenburg-Vorpommern	-	6	12	983	117
Sachsen	3	7	22	532	126
Sachsen-Anhalt	3	3	21	1,269	187
Thüringen	-	6	17	1,011	135
Total East	6	26	86	4,883	695
2002	15	n.a. ¹	227	7,565 ¹	-
1989					
Total 2002	32	117	323	13,735	1,687

¹ Cities and counties not differentiated in official GDR-statistics

Source: Statistisches Jahrbuch Deutscher Gemeinden 2002

Table 2.9: Local Government Employment, 1970-2002

Year	Total Local Govt. Empl.	County	City	Township	General Purpose Association	Regional Association	Special Purpose Association
		<i>Landkreis</i>	<i>kreisfreie Stadt</i>	<i>kreisang. Gemeinde</i>	<i>Verwaltungsgemeinschaft</i>	<i>Bezirksverband</i>	<i>komm. Zweckverb.</i>
2002	1,512,719	297,139	463,236	580,313	42,451	58,576	71,004
2001	1,537,071	292,182	492,922	582,499	44,690	57,362	67,416
2000	1,502,211	299,165	503,470	590,461	45,745	63,370	69,788
1999	1,537,321	317,373	512,355	598,398	45,903	63,292	72,387
1998	1,580,747	327,616	536,752	602,653	46,879	66,847	67,737
1997	1,615,175	336,089	553,540	612,058	46,154	67,334	68,166
1996	1,739,261	347,165	567,064	639,889	48,870	68,501	67,772
1995	1,801,549	358,327	592,423	665,541	49,167	70,190	65,901
1994 ¹⁾	1,873,285	368,064	621,813	699,751			66,815
1990	1,358,026	260,921	483,220	470,063	25,678	65,047	53,097
1989	1,327,120	251,934	474,718	461,715	25,380	62,738	50,635
1988	1,326,885	250,699	471,581	466,782	26,155	61,510	50,158
1987	1,326,001	249,807	469,546	469,355	26,150	60,221	50,922
1986	1,303,541	243,312	465,876	462,005	25,812	57,784	48,752
1985	1,268,896	236,105	457,468	446,600	24,867	55,982	47,874
1984	1,243,493	229,801	451,423	436,467	24,407	54,872	46,523
1983	1,229,481	227,881	448,156	428,344	23,718	55,774	45,608
1982	1,230,303	222,617	452,770	432,852	23,237	55,889	42,938
1981	1,227,624	219,652	453,326	434,470	22,963	55,381	41,832
1980 ²⁾	1,125,686	209,555	466,746	371,135	18,254	52,840	40,156
1979	1,174,929	211,320	441,849	406,094	22,947	51,209	41,510
1978 ³⁾	869,830	159,984	367,827	282,699	13,887	45,433	
1977	852,457	155,459	364,805	274,311	14,043	43,839	
1976	846,967	153,838	360,575	275,249	14,479	42,826	
1975	850,132	153,595	368,283	271,950	13,900	42,404	
1974	825,076	151,959	365,421	248,907	17,460	41,329	
1973	816,364	144,924	373,350	239,625	17,926	40,539	
1972	801,859	136,385	378,217	233,929	13,919	39,409	
1971	780,005	130,921	380,832	216,860	12,969	38,423	
1970	757,883	122,102	376,301	210,834	12,248	36,398	

¹⁾ 1991-1993 data for new Länder due to local government reorganization not available

²⁾ without part-time t2 (less than half of regular work-time)

³⁾ 1970-1978 full-time personnel

3.1a: Total Employment by Task Area, 1960 - 2002

Year	Task Areas																Total	
	General Administration	Defense (Civilians)	Defense (Military) 1)	Police	Justice	Education	Social Services	Health	Agriculture	Housing	Transportation	Postal Services	Railways	Public Enterprises	Economic Services	Semi-State		other 2)
2002	627,700	126,768	184,058	438,024	192,493	1,296,778	317,850	373,841	27,836	154,190	86,741	--	62,124	69,491	19,831	587,954	243,411	4,809,090
2001	629,753	129,865	183,431	436,747	192,435	1,325,000	315,726	391,322	28,185	160,887	92,838	--	66,360	74,957	20,806	545,065	227,756	4,821,133
2000	644,400	133,800	185,400	437,900	194,000	1,554,700	196,500	414,800	31,200	167,800	98,900	--	73,600	75,400	22,900	488,000	189,600	4,908,900
1999	658,300	136,800	189,800	440,200	195,200	1,598,700	196,600	430,200	29,700	170,100	100,600	--	78,400	82,600	22,800	457,300	182,100	4,969,400
1998	667,100	136,700	190,200	442,600	197,000	1,632,800	204,000	459,600	30,000	178,800	103,300	--	91,800	94,600	23,400	449,300	167,500	5,068,700
1997	676,600	143,700	191,800	446,900	196,500	1,660,300	214,700	481,900	30,200	187,600	107,500	--	101,600	100,700	23,000	450,500	150,300	5,163,800
1996	694,500	149,000	190,800	450,100	196,500	1,676,400	225,100	511,000	31,900	202,900	112,600	--	111,600	104,500	25,800	462,600	131,200	5,276,500
1995	707,100	156,000	194,300	449,700	197,200	1,668,200	259,300	550,800	33,200	211,800	117,200	--	119,800	115,000	26,900	449,900	114,800	5,371,000
1994	725,300	165,000	212,700	446,400	195,800	1,690,600	262,100	598,900	35,000	221,400	120,300	605,000	128,500	123,300	29,400	428,000	106,600	6,094,300
1993	704,700	175,000	230,900	435,600	190,700	1,670,400	268,100	624,100	37,600	210,300	121,400	636,700	417,700	175,700	28,400	387,900	187,400	6,502,600
1992	711,100	187,000	245,800	424,500	186,100	1,748,300	272,900	660,600	40,200	226,800	128,700	641,500	434,000	187,000	28,000	352,200	182,500	6,657,200
1991	725,800	205,000	257,300	421,800	181,200	1,740,800	295,100	682,600	37,500	216,700	125,300	663,500	473,800	182,700	33,300	325,100	170,100	6,737,800
1990 ³⁾	480,300	165,000	244,000	312,300	145,100	809,200	140,600	354,000	22,900	165,300	101,000	439,200	246,600	133,000	19,600	216,800	52,900	4,047,800
1985	480,400	172,000	250,000	299,400	137,200	836,600	129,700	344,900	26,400	155,100	103,000	439,800	294,700	130,700	21,700	217,600	35,200	4,074,400
1980	479,000	172,000	237,000	291,000	125,500	849,700	124,300	332,700	25,500	150,200	103,700	425,700	338,000	130,400	20,500	203,500	29,700	4,038,400
1975	457,200	178,000	235,000	258,800	117,800	761,900	115,300	297,000	22,400	133,100	112,700	419,300	417,900	136,800	21,700	198,100	21,300	3,904,300
1970	413,800	171,000	232,000	226,500	106,600	576,900	106,600	241,100	22,000	111,500	121,500	401,900	404,800	153,600	21,500	166,500	19,300	3,497,100
1965	400,000	155,000	208,000	207,900	99,000	455,300	111,700	206,500	19,900	106,800	110,100	387,100	458,200	176,300	19,100	150,200	17,200	3,288,300
1960	370,800	86,000	150,000	184,000	93,000	361,800	111,200	173,000	20,500	91,400	93,500	359,500	489,900	201,600	16,600	140,500	15,500	2,958,800

1) without conscripts

2) including local special purpose associations

3) 1960-1990 full-time personnel

3.1b: Relative Employment Strength of Task Areas, 1960 - 2002

Year	Task Areas in%																	Total
	General Administration	Defense (Civilians)	Defense (Military) ¹	Police	Justice	Education	Social Services	Health	Agriculture	Housing	Transportation	Postal Services	Railways	Public Enterprises	Economic Services	Semi-State	other ²⁾	
2002	13.1	2.6	3.8	9.1	4.0	27.0	6.6	7.8	0.6	3.2	1.8	--	1.3	1.4	0.4	12.2	5.1	4,809,090
2001	13.1	2.7	3.8	9.1	4.0	27.5	6.5	8.1	0.6	3.3	1.9	--	1.4	1.6	0.4	11.3	4.7	4,821,133
2000	13.1	2.7	3.8	8.9	4.0	31.7	4.0	8.4	0.6	3.4	2.0	--	1.5	1.5	0.5	9.9	3.9	4,908,900
1999	13.2	2.8	3.8	8.9	3.9	32.2	4.0	8.7	0.6	3.4	2.0	--	1.6	1.7	0.5	9.2	3.7	4,969,400
1998	13.2	2.7	3.8	8.7	3.9	32.2	4.0	9.1	0.6	3.5	2.0	--	1.8	1.9	0.5	8.9	3.3	5,068,700
1997	13.1	2.8	3.7	8.7	3.8	32.2	4.2	9.3	0.6	3.6	2.1	--	2.0	2.0	0.4	8.7	2.9	5,163,800
1996	13.2	2.8	3.6	8.5	3.7	31.8	4.3	9.7	0.6	3.8	2.1	--	2.1	2.0	0.5	8.8	2.5	5,276,500
1995	13.2	2.9	3.6	8.4	3.7	31.1	4.8	10.3	0.6	3.9	2.2	--	2.2	2.1	0.5	8.4	2.1	5,371,000
1994	11.9	2.7	3.5	7.3	3.2	27.8	4.3	9.8	0.6	3.6	2.0	9.9	2.1	2.0	0.6	7.0	1.7	6,094,300
1993	10.8	2.7	3.5	6.7	2.9	25.7	4.1	9.6	0.6	3.2	2.0	9.8	6.4	2.7	0.4	6.0	2.9	6,502,600
1992	10.7	2.8	3.7	6.4	2.8	26.3	4.1	9.9	0.6	3.4	1.9	9.6	6.5	2.8	0.5	5.3	2.7	6,657,200
1991	10.8	3.0	3.8	6.3	2.7	25.8	4.4	10.1	0.6	3.2	1.9	9.9	7.0	2.7	0.5	4.8	2.5	6,737,800
1990 ³⁾	11.9	4.1	6.0	7.5	3.6	20.0	3.5	8.7	0.6	4.1	2.5	10.8	6.1	3.3	0.5	5.4	1.3	4,047,800
1985	11.8	4.2	6.1	7.4	3.4	20.5	3.2	8.5	0.6	3.8	2.5	10.8	7.2	3.2	0.5	5.4	0.9	4,074,400
1980	11.9	4.3	5.8	7.2	3.1	21.1	3.1	8.3	0.6	3.7	2.6	10.5	8.4	3.2	0.5	5.0	0.7	4,038,400
1975	11.7	4.6	6.0	6.6	3.0	19.5	3.0	7.6	0.6	3.4	2.9	10.7	10.7	3.5	0.6	5.1	0.5	3,904,300
1970	11.8	4.9	6.6	6.5	3.1	16.5	3.0	6.9	0.6	3.2	3.5	11.5	11.6	4.4	0.6	4.8	0.5	3,497,100
1965	12.2	4.7	6.3	6.3	3.0	13.9	3.4	6.3	0.6	3.2	3.3	11.8	13.9	5.4	0.6	4.6	0.5	3,288,300
1960	12.5	2.9	5.1	6.2	3.1	12.2	3.7	5.8	0.7	3.1	3.2	12.2	16.6	6.8	0.6	4.8	0.5	2,958,800

¹⁾ without conscripts²⁾ including local special purpose associations³⁾ 1960-1990 full-time personnel

Table 3.2: General Administration, 1960-2002

Year	Total	Federal	% of Total	Länder	% of Total	Local	% of Total
2002	627,700	76,500	12.2	267,500	42.6	283,600	45.2
2001	629,800	76,800	12.2	268,200	42.6	284,200	45.2
2000	644,400	78,000	12.1	275,000	42.7	291,400 ¹⁾	45.2
1999	658,300	78,500	11.9	285,700	43.4	294,100	44.7
1998	667,100	79,100	11.9	289,600	43.4	298,400	44.7
1997	676,600	80,500	11.9	299,300	44.2	296,800	43.9
1996	694,500	75,600	10.9	308,800	44.5	310,100	44.6
1995	707,100	82,100	11.6	313,100	44.3	311,900	44.1
1994	725,300	83,800	11.5	315,800	43.5	325,700	44.9
1993	704,700	84,800	12.0	308,300	43.7	311,600	44.2
1992	711,100	87,700	12.3	299,100	42.1	324,300	45.6
1991	725,800	88,800	12.2	321,400	44.3	315,600	43.5
1990*	480,300	71,400	14.9	216,900	45.2	192,000	40.0
1989	482,800	70,900	14.7	216,100	44.8	195,800	40.5
1988	488,500	71,000	14.5	220,200	45.1	197,300	40.4
1987	490,200	70,600	14.4	219,100	44.7	200,500	40.9
1986	484,500	70,300	14.5	219,300	45.3	194,900	40.2
1985	480,400	70,200	14.6	217,200	45.2	193,000	40.2
1984	475,500	70,500	14.8	215,300	45.3	189,700	39.9
1983	475,400	70,700	14.9	215,900	45.4	188,800	39.7
1982	479,800	71,300	14.9	217,200	45.3	191,300	39.9
1981	482,600	71,600	14.8	219,700	45.5	191,300	39.6
1980	479,000	70,600	14.7	219,300	45.8	189,100	39.5
1975	457,200	73,000	16.0	208,200	45.5	176,000	38.5
1970	413,800	70,100	17.0	184,600	44.6	159,100	38.4
1965	400,000	71,600	17.9	173,700	43.4	154,700	38.7
1960	370,800	70,200	18.9	157,400	42.5	143,200	38.6
<i>% change</i>							
<i>91-2002</i>	<i>-13.5</i>	<i>-13.9</i>		<i>-16.8</i>		<i>-10.1</i>	
<i>91-2000</i>	<i>-11.2</i>	<i>-12.2</i>		<i>-14.4</i>		<i>-7.7</i>	
<i>1980-90</i>	<i>0.3</i>	<i>1.1</i>		<i>-1.1</i>		<i>1.5</i>	
<i>1970-80</i>	<i>15.6</i>	<i>0.7</i>		<i>18.8</i>		<i>18.9</i>	
<i>1960-70</i>	<i>11.6</i>	<i>-0.4</i>		<i>17.3</i>		<i>11.1</i>	
<i>1960-90</i>	<i>29.5</i>	<i>1.7</i>		<i>37.8</i>		<i>34.1</i>	

* 1960-1990 full-time personnel

1) since 2000 incl. Bauverwaltung

Table 3.3: Defense, 1960-2002

Year	Professional Military¹⁾	Civilian Admin.	Total
2002	184	127	312
2001	183	130	314
2000	185	134	320
1999	190	137	327
1998	191	138	329
1997	192	143	335
1996	190	138	328
1995	194	156	350
1994	213	165	378
1993	231	175	406
1992	246	187	433
1991	257	205	462
1990 ²⁾	244	165	409
1989	247	167	414
1988	250	169	419
1987	251	171	422
1986	249	171	420
1985	250	172	422
1984	247	171	418
1983	244	172	416
1982	235	172	407
1981	245	172	417
1980	237	172	409
1975	235	178	413
1970	232	171	403
1965	208	155	363
1960	150	86	236
<i>% change</i>			
<i>91-2002</i>	<i>-28.4</i>	<i>-38.0</i>	<i>-32.5</i>
<i>91-2000</i>	<i>-28.0</i>	<i>-34.6</i>	<i>-30.7</i>
<i>1980-90</i>	<i>3.0</i>	<i>-4.1</i>	<i>0.00</i>
<i>1970-80</i>	<i>2.2</i>	<i>0.6</i>	<i>1.5</i>
<i>1960-70</i>	<i>54.7</i>	<i>98.8</i>	<i>70.8</i>
<i>1960-90</i>	<i>62.7</i>	<i>91.9</i>	<i>73.3</i>

¹⁾ without conscripts (in 1,000)

²⁾ 1960-1990 full-time personnel

Table 3.4: Police, Security and Public Order, 1960-2002

Year	Total	Federal	% of Total	Länder	% of Total	Local	% of Total
2002	438,000	43,000	9.8	287,500	65.6	114,600	26.2
2001	436,800	42,700	9.8	287,100	65.7	114,200 ¹	26.1
2000	437,900	42,400	9.7	289,100	66.0	106,400	24.3
1999	440,200	43,100	9.8	291,400	66.2	105,700	24.0
1998	442,600	44,300	10.0	294,100	66.4	104,200	23.5
1997	446,900	45,000	10.0	296,300	66.3	105,600	23.6
1996	450,100	43,600	9.7	297,700	66.1	108,800	24.2
1995	449,600	44,600	9.9	297,100	66.1	107,900	24.0
1994	446,400	42,600	9.5	297,200	66.6	106,600	23.9
1993	435,600	38,000	8.7	291,900	67.0	105,700	24.3
1992	424,500	34,800	8.2	285,100	67.2	104,600	24.6
1991	421,800	34,900	8.3	287,400	68.2	99,500	23.6
1990*	312,300	27,700	8.9	216,000	69.2	68,600	22.0
1989	305,300	27,900	9.1	212,600	69.6	64,700	21.2
1988	302,800	27,700	9.1	211,500	69.9	63,600	21.0
1987	301,900	27,200	9.0	211,600	70.1	63,100	20.9
1986	300,400	27,400	9.1	211,700	70.5	61,300	20.4
1985	299,400	27,700	9.2	211,800	70.7	59,900	20.0
1984	298,600	28,100	9.4	211,600	70.9	58,900	19.7
1983	299,600	28,800	9.6	212,000	70.8	58,800	19.6
1982	298,800	29,400	9.8	209,500	70.1	59,900	20.1
1981	295,100	29,300	9.9	207,800	70.4	58,000	19.7
1980	291,000	28,800	9.9	204,500	70.3	57,700	19.8
1975	258,800	26,700	10.3	175,600	67.9	56,500	21.8
1970	226,500	21,500	9.4	144,500	63.8	60,500	26.7
1965	207,900	20,600	9.9	130,500	62.8	56,800	27.3
1960	184,000	17,600	9.6	118,000	64.1	48,400	26.3
<i>% change</i>							
<i>91-2002</i>	<i>3.8</i>	<i>23.2</i>		<i>0.3</i>		<i>15.2¹</i>	
<i>91-2000</i>	<i>3.8</i>	<i>21.5</i>		<i>0.6</i>		<i>6.9</i>	
<i>1980-90</i>	<i>7.3</i>	<i>-3.8</i>		<i>5.6</i>		<i>18.9</i>	
<i>1970-80</i>	<i>28.5</i>	<i>33.9</i>		<i>41.5</i>		<i>-4.6</i>	
<i>1960-70</i>	<i>23.1</i>	<i>22.2</i>		<i>22.5</i>		<i>25.0</i>	
<i>1960-90</i>	<i>69.7</i>	<i>57.4</i>		<i>83.1</i>		<i>41.7</i>	

* 1960-1990 full-time personnel

1) local: bis 2000 nur Vollzeitbeschäftigte

Table 3.5: Justice and Penitentiary Personnel, 1960-2002

Year	Total	Federal	% of Total	Länder	% of Total
2002	192,500	4,300	2.2	188,200	97.8
2001	192,400	4,200	2.2	188,200	97.8
2000	194,000	4,300	2.2	189,700	97.8
1999	195,200	4,300	2.2	190,900	97.8
1998	196,800	4,400	2.2	192,400	97.8
1997	196,500	4,500	2.3	192,000	97.7
1996	196,500	4,100	2.1	192,400	97.9
1995	197,200	4,700	2.4	192,500	97.6
1994	195,800	4,800	2.5	191,000	97.5
1993	190,700	5,000	2.6	185,700	97.4
1992	186,100	4,900	2.6	181,200	97.4
1991	181,200	4,800	2.6	176,400	97.4
1990*	145,100	3,900	2.7	141,200	97.3
1989	141,700	2,100	1.4	139,600	98.5
1988	141,600	1,900	1.3	139,700	98.7
1987	140,300	1,800	1.3	138,500	98.7
1986	138,300	1,800	1.3	136,500	98.7
1985	137,200	1,800	1.3	135,400	98.7
1984	134,000	1,800	1.3	132,200	98.7
1983	133,400	1,800	1.3	131,600	98.7
1982	130,500	1,900	1.5	128,600	98.5
1981	128,600	1,900	1.5	126,700	98.5
1980	125,500	2,000	1.6	123,500	98.4
1975	117,800	1,900	1.6	115,900	98.4
1970	106,600	1,700	1.6	104,900	98.4
1965	99,000	1,500	1.5	97,500	98.5
1960	93,000	1,200	1.3	91,800	98.7
<i>% change</i>					
<i>91-2002</i>	<i>6.2</i>	<i>-10.4</i>		<i>6.7</i>	
<i>91-2000</i>	<i>7.1</i>	<i>-10.4</i>		<i>7.5</i>	
<i>1980-90</i>	<i>15.2</i>	<i>95.0</i>		<i>14.3</i>	
<i>1970-80</i>	<i>17.7</i>	<i>17.6</i>		<i>17.7</i>	
<i>1960-70</i>	<i>14.6</i>	<i>41.7</i>		<i>14.3</i>	
<i>1960-90</i>	<i>56.0</i>	<i>225.0</i>		<i>53.8</i>	

* 1960-1990 full-time personnel

Table 3.6: Education and Research, 1960-2002

Year	Total	Federal	% of Total	Länder	% of Total	Local	% of Total
2002	1,296,800	11,800	1.0	1,106,700	85.3	182,400	14.1
2001	1,328,000	12,100	1.0	1,132,900	85.3	188,500	14.2
2000	1,554,700	15,400	1.0	1,216,600	78.3	322,700	20.8
1999	1,598,700	15,600	1.0	1,256,000	78.6	327,100	20.5
1998	1,632,800	16,300	1.0	1,285,500	78.7	331,000	20.3
1997	1,660,300	16,800	1.0	1,299,900	78.3	343,600	20.7
1996	1,676,400	14,600	0.9	1,300,000	77.5	361,800	21.6
1995	1,668,200	17,400	1.0	1,288,000	77.2	362,800	21.7
1994	1,690,600	18,200	1.1	1,281,400	75.8	391,000	23.1
1993	1,670,400	18,300	1.1	1,273,900	76.3	378,200	22.6
1992	1,748,300	15,300	0.9	1,296,500	74.2	436,500	25.0
1991	1,740,800	14,200	0.8	1,318,000	75.7	408,600	23.5
1990*	809,200	10,100	1.3	685,600	84.7	113,500	14.0
1989	797,700	10,200	1.3	678,600	85.1	108,900	13.6
1988	806,600	10,100	1.2	687,800	85.3	108,700	13.5
1987	816,400	9,800	1.2	697,900	85.5	108,700	13.3
1986	825,700	9,400	1.2	709,500	85.9	106,800	12.9
1985	836,600	9,400	1.1	721,400	86.2	105,800	12.7
1984	847,200	9,400	1.1	733,800	86.6	104,000	12.3
1983	857,200	9,400	1.1	744,700	86.9	103,100	12.0
1982	864,600	9,200	1.1	753,400	87.1	102,000	11.8
1981	857,500	9,400	1.1	746,100	87.0	102,000	11.9
1980	849,700	9,300	1.1	739,100	87.0	101,300	11.9
1975	761,900	8,200	1.1	659,700	86.6	94,000	12.3
1970	576,900	7,400	1.3	504,700	87.5	64,800	11.2
1965	455,300	5,900	1.3	391,800	86.1	57,600	12.7
1960	361,800	5,200	1.4	309,600	85.6	47,000	13.0
<i>% change</i>							
<i>91-2002</i>	<i>-25.5</i>	<i>-16.9</i>		<i>-16.0</i>		<i>-55.4</i>	
<i>91-2000</i>	<i>-10.7</i>	<i>8.5</i>		<i>-7.7</i>		<i>-21.0</i>	
<i>1980-90</i>	<i>-4.8</i>	<i>8.6</i>		<i>-7.2</i>		<i>12.0</i>	
<i>1970-80</i>	<i>47.3</i>	<i>25.7</i>		<i>46.4</i>		<i>56.3</i>	
<i>1960-70</i>	<i>59.4</i>	<i>42.3</i>		<i>63.0</i>		<i>37.9</i>	
<i>1960-90</i>	<i>123.7</i>	<i>94.2</i>		<i>121.4</i>		<i>141.5</i>	

* 1960-1990 full-time personnel

Table 3.7: Social Services, 1960-2002

Year	Total	Federal	% of Total	Länder	% of Total	Local	% of Total
2002	317,800	3,800	1.2	59,900	18.8	254,100	80.0
2001	315,700	3,700	1.2	59,400	18.8	252,600	80.0
2000	196,400	3,900	2.0	64,800	33.0	127,700	65.0
1999	196,600	4,000	2.0	65,000	33.1	127,600	64.9
1998	203,900	4,100	2.0	70,100	34.4	129,700	63.6
1997	214,700	4,300	2.0	78,400	36.5	132,000	61.5
1996	225,100	4,200	1.9	78,400	34.8	142,500	63.3
1995	259,200	6,000	2.3	83,500	32.2	169,700	65.5
1994	262,100	6,200	2.4	88,300	33.7	167,600	63.9
1993	268,100	4,700	1.8	91,400	34.1	172,000	64.2
1992	272,900	3,000	1.1	94,000	34.4	175,900	64.5
1991	295,100	2,800	0.9	78,400	26.6	213,900	72.5
1990*	140,600	2,000	1.4	49,700	35.3	88,900	63.2
1989	139,200	1,600	1.1	50,500	36.3	87,100	62.6
1988	137,500	1,300	0.9	49,500	36.0	86,700	63.1
1987	137,700	1,200	0.9	49,600	36.0	86,900	63.1
1986	132,900	1,100	0.8	49,600	37.3	82,200	61.9
1985	129,700	1,100	0.8	52,000	40.1	76,600	59.1
1984	128,800	1,100	0.8	52,400	40.7	75,300	58.5
1983	127,500	1,100	0.9	51,700	40.5	74,700	58.6
1982	125,700	1,100	0.9	50,600	40.2	74,000	58.9
1981	126,000	1,100	0.9	50,900	40.4	74,000	58.7
1980	124,300	1,000	0.8	51,100	41.1	72,200	58.1
1975	115,300	800	0.7	49,500	42.9	65,000	56.4
1970	106,600	700	0.7	46,200	43.3	59,700	56.0
1965	111,700	800	0.7	52,500	47.0	58,400	52.3
1960	111,200	1,000	0.9	55,700	50.1	54,500	49.0
<i>% change</i>							
<i>91-2002</i>	<i>7.1</i>	<i>35.7</i>		<i>-23.6</i>		<i>18.8</i>	
<i>91-2000</i>	<i>-33.4</i>	<i>39.3</i>		<i>-17.4</i>		<i>-40.3</i>	
<i>1980-90</i>	<i>13.1</i>	<i>100.0</i>		<i>-2.4</i>		<i>23.1</i>	
<i>1970-80</i>	<i>16.6</i>	<i>42.9</i>		<i>10.6</i>		<i>20.9</i>	
<i>1960-70</i>	<i>-4.1</i>	<i>-30.0</i>		<i>-17.1</i>		<i>9.5</i>	
<i>1960-90</i>	<i>26.4</i>	<i>100.0</i>		<i>-10.8</i>		<i>63.1</i>	

* 1960-1990 full-time personnel

Table 3.8: Health, Environment and Recreation, 1960-2002

Year	Total	Federal	% of Total	Länder	% of Total	Local	% of Total
2002	362,800	5,500	1.5	47,600	13.1	309,700	85.4
2001	378,900	5,200	1.4	49,500	13.1	324,200	85.5
2000	414,800	2,000	0.5	69,900	16.9	342,900	82.7
1999	430,200	2,100	0.5	60,200	14.0	367,900	85.5
1998	459,400	2,100	0.5	67,200	14.6	390,100	84.9
1997	481,900	2,100	0.4	71,700	14.9	408,100	84.7
1996	511,000	1,700	0.3	83,500	16.3	425,800	83.3
1995	550,800	2,100	0.4	106,300	19.3	442,400	80.3
1994	598,900	1,700	0.3	126,000	21.0	471,200	78.7
1993	624,100	1,700	0.3	129,000	20.7	493,400	79.1
1992	660,600	1,800	0.3	135,800	20.6	523,000	79.2
1991	682,600	1,500	0.2	150,300	22.0	530,800	77.8
1990*	354,000	1,000	0.3	68,400	19.3	284,600	80.4
1989	349,400	700	0.2	66,100	18.9	282,600	80.9
1988	352,100	700	0.2	68,800	19.5	282,600	80.3
1987	353,500	600	0.2	68,600	19.4	284,300	80.4
1986	347,800	600	0.2	69,100	19.9	278,100	79.9
1985	344,900	600	0.2	70,300	20.4	274,000	79.4
1984	339,600	600	0.2	70,000	20.6	269,000	79.2
1983	338,100	600	0.2	69,700	20.6	267,800	79.2
1982	335,400	500	0.2	68,600	20.4	266,300	79.4
1981	340,100	500	0.2	68,900	20.3	270,700	79.6
1980	332,700	500	0.2	68,400	20.6	263,800	79.3
1975	297,000	300	0.1	66,700	22.5	230,000	77.4
1970	241,100	100	0.1	60,000	24.9	181,000	75.1
1965	206,500	0	--	58,500	28.3	148,000	71.7
1960	173,000	0	--	51,000	29.5	122,000	70.5
<i>% change</i>							
<i>91-2002</i>	<i>-46.9</i>	<i>266.7</i>		<i>-68.3</i>		<i>-41.7</i>	
<i>91-2000</i>	<i>-39.2</i>	<i>33.3</i>		<i>-53.5</i>		<i>-35.4</i>	
<i>1980-90</i>	<i>6.4</i>	<i>100.0</i>		<i>-0.0</i>		<i>7.9</i>	
<i>1970-80</i>	<i>38.0</i>	<i>400.0</i>		<i>14.0</i>		<i>45.8</i>	
<i>1960-70</i>	<i>39.4</i>			<i>17.6</i>		<i>48.4</i>	
<i>1960-90</i>	<i>104.6</i>			<i>34.1</i>		<i>133.3</i>	

* 1960-1990 full-time personnel

Table 3.9: Agriculture and Forestry, 1960-2002

Year	Total	Federal	% of Total	Länder	% of Total	Local	% of Total
2002	27,800	400	1.4	26,000	93.6	1,400	5.0
2001	28,200	400	1.4	26,100	92.6	1,700	6.0
2000	31,200	400	1.3	29,000	92.9	1,800	5.8
1999	29,700	400	1.4	27,500	93.5	1,500	5.1
1998	29,900	400	1.3	27,600	92.3	1,900	6.4
1997	30,200	400	1.3	27,800	92.1	2,000	6.6
1996	31,900	300	0.9	28,800	90.3	2,800	8.8
1995	33,300	500	1.5	29,300	88.0	3,500	10.5
1994	35,000	900	2.6	31,000	88.6	3,100	8.8
1993	37,600	900	2.4	34,000	90.4	2,700	7.2
1992	40,200	900	2.2	34,200	85.1	5,100	12.7
1991	37,500	900	2.4	31,800	84.8	4,800	12.8
1990*	22,900	600	2.6	20,400	89.1	1,900	8.3
1989	23,200	600	2.6	20,400	87.9	2,200	9.5
1988	24,200	600	2.5	21,300	88.0	2,300	9.5
1987	24,500	700	2.9	21,500	87.7	2,300	9.4
1986	25,000	700	2.8	22,100	88.4	2,200	8.8
1985	26,400	700	2.6	21,900	83.0	3,800	14.4
1984	26,500	700	2.6	22,100	83.4	3,700	14.0
1983	26,500	700	2.6	22,200	83.8	3,600	13.6
1982	26,300	600	2.3	22,000	83.6	3,700	14.1
1981	25,700	600	2.3	21,800	84.8	3,300	12.8
1980	25,500	600	2.4	21,600	84.7	3,300	13.0
1975	22,400	500	2.2	19,900	88.8	2,000	9.0
1970	22,000	500	2.3	19,900	90.4	1,600	7.3
1965	19,900	400	2.0	18,000	90.5	1,500	7.5
1960	20,500	400	2.0	18,700	91.2	1,400	6.8
<i>% change</i>							
<i>91-2002</i>	<i>-25.9</i>	<i>-55.6</i>		<i>-18.2</i>		<i>-70.8</i>	
<i>91-2000</i>	<i>-16.8</i>	<i>-55.6</i>		<i>-8.8</i>		<i>-62.5</i>	
<i>1980-90</i>	<i>-10.2</i>	<i>--</i>		<i>-5.6</i>		<i>-42.4</i>	
<i>1970-80</i>	<i>15.9</i>	<i>20.0</i>		<i>8.5</i>		<i>106.3</i>	
<i>1960-70</i>	<i>7.3</i>	<i>25.0</i>		<i>6.42</i>		<i>14.3</i>	
<i>1960-90</i>	<i>11.7</i>	<i>50.0</i>		<i>9.1</i>		<i>35.1</i>	

* 1960-1990 full-time personnel

Table 3.10: Housing, Land Use Regulation and Community Services, 1960-2002

Year	Total	Länder	% of Total	Local	% of Total
2002	154,200	20,000	13.0	134,200	87.0
2001	160,900	20,700	12.9	140,200	87.1
2000	167,800	22,000	13.1	145,800	86.9
1999	170,100	22,700	13.3	147,400	86.7
1998	178,600	24,300	13.6	154,300	86.4
1997	187,600	25,700	13.7	161,900	86.3
1996	202,900	28,500	14.1	174,400	85.9
1995	211,800	29,700	14.0	182,100	86.0
1994	221,400	36,400	16.4	185,000	83.6
1993	210,300	37,100	17.6	173,200	82.3
1992	226,800	39,100	17.2	187,700	82.8
1991	216,700	36,900	17.0	179,800	83.0
1990*	165,300	28,600	17.3	136,700	82.7
1989	160,600	28,000	17.4	132,600	82.6
1988	163,300	28,600	17.5	134,700	82.5
1987	162,900	29,000	17.8	133,900	82.2
1986	159,500	29,100	18.2	130,400	81.8
1985	155,100	29,300	18.9	125,800	81.1
1984	153,100	29,300	19.1	123,800	80.9
1983	150,900	29,500	19.5	121,400	80.5
1982	152,500	29,500	19.3	123,000	80.7
1981	153,900	29,900	19.4	124,000	80.6
1980	150,200	29,700	19.8	120,500	80.2
1975	133,100	30,100	22.6	103,000	77.4
1970	111,500	29,500	26.5	82,000	73.5
1965	106,800	32,800	30.7	74,000	69.3
1960	91,400	28,400	31.1	63,000	68.9
<i>% change</i>					
<i>91-2002</i>	<i>-28.8</i>	<i>-45.8</i>		<i>-25.4</i>	
<i>91-2000</i>	<i>-22.6</i>	<i>-40.4</i>		<i>-18.9</i>	
<i>1980-90</i>	<i>10.0</i>	<i>-3.7</i>		<i>13.4</i>	
<i>1970-80</i>	<i>34.7</i>	<i>0.7</i>		<i>47.0</i>	
<i>1960-70</i>	<i>22.0</i>	<i>3.9</i>		<i>30.1</i>	
<i>1960-90</i>	<i>80.8</i>	<i>0.7</i>		<i>117.0</i>	

* 1960-1990 full-time personnel

Table 3.11: Transportation and Communication, 1960-2002

Year	Total	Federal	% of Total	Länder	% of Total	Local	% of Total
2002	86,700	25,800	29.8	36,800	42.4	24,100	27.8
2001	92,800	26,100	28.1	41,600	44.8	25,100	27.1
2000	98,900	26,600	26.7	43,200	43.7	29,100	29.4
1999	100,600	26,900	26.7	44,300	44.0	29,400	29.2
1998	103,300	28,000	27.1	45,400	43.9	29,900	28.9
1997	107,500	28,500	26.5	46,700	43.4	32,300	30.0
1996	112,600	27,100	24.1	48,400	43.0	37,100	32.9
1995	117,100	29,600	25.3	49,000	41.8	38,500	32.9
1994	120,300	28,900	24.0	49,500	41.1	41,900	34.8
1993	121,400	31,300	25.8	50,000	41.2	40,100	33.0
1992	128,700	31,200	24.2	49,800	38.7	47,700	37.1
1991	125,300	29,200	23.3	49,300	39.3	46,800	37.4
1990*	101,000	22,600	22.4	37,400	37.0	41,000	40.6
1989	97,900	22,400	22.9	37,900	38.7	37,600	38.4
1988	100,800	22,600	22.4	38,400	38.1	39,800	39.5
1987	101,900	22,800	22.4	38,800	38.1	40,300	39.5
1986	101,500	22,900	22.6	39,100	38.5	39,500	38.9
1985	103,000	23,000	22.3	39,500	38.3	40,500	39.3
1984	103,200	23,700	23.0	39,700	38.5	39,800	38.6
1983	102,400	23,900	23.3	39,600	38.7	38,900	38.0
1982	103,000	24,000	23.3	40,000	38.8	39,000	37.9
1981	103,900	24,100	23.2	40,800	39.3	39,000	37.5
1980	103,700	24,300	23.4	40,800	39.3	38,600	37.2
1975	112,700	25,300	22.4	42,400	37.6	45,000	39.9
1970	121,500	23,500	19.3	42,000	34.6	56,000	46.1
1965	110,100	23,400	21.2	36,700	33.3	50,000	45.4
1960	93,500	22,800	24.4	32,200	34.4	38,500	41.2
<i>% change</i>							
<i>91-2002</i>	<i>-30.8</i>	<i>-11.6</i>		<i>-25.4</i>		<i>-48.5</i>	
<i>91-2000</i>	<i>-21.1</i>	<i>-8.9</i>		<i>-12.4</i>		<i>-37.8</i>	
<i>1980-90</i>	<i>-2.6</i>	<i>-7.0</i>		<i>-8.4</i>		<i>6.2</i>	
<i>1970-80</i>	<i>-14.6</i>	<i>3.4</i>		<i>-2.9</i>		<i>-31.1</i>	
<i>1960-70</i>	<i>30.0</i>	<i>3.1</i>		<i>30.4</i>		<i>45.4</i>	
<i>1960-90</i>	<i>8.0</i>	<i>-0.9</i>		<i>16.2</i>		<i>6.5</i>	

* 1960-1990 full-time personnel

Table 3.12: Federal Postal Services, 1950-1994*

Year	Total	full-time	part-time	% of Total
1994	605,000	488,900	116,100	19.2
1993	636,700	511,500	125,200	19.7
1992	641,500	520,600	120,900	18.8
1991	663,500	532,200	131,300	19.8
1990	537,100	439,200	97,900	18.2
1989	531,400	436,800	94,600	17.8
1988	527,900	438,400	89,400	16.9
1987	531,700	440,500	91,100	17.1
1986	529,200	440,200	89,000	16.8
1985	536,900	439,800	97,100	18.1
1984	531,300	436,000	95,200	17.9
1983	526,400	437,200	89,200	16.9
1982	525,800	437,500	88,300	16.8
1981	512,200	433,100	79,100	15.4
1980	501,700	425,700	76,000	15.1
1975	489,400	419,300	70,100	14.3
1970	457,600	401,900	55,700	12.2
1965	430,500	387,100	43,400	10.1
1960	407,000	359,500	47,500	11.7
1955	359,200	334,200	25,000	6.7
1950	293,800	279,500	14,300	4.9
<i>% change</i>				
<i>1991-94</i>	<i>-8.8</i>	<i>-8.1</i>	<i>-11.6</i>	
<i>1980-90</i>	<i>7.1</i>	<i>3.2</i>	<i>28.8</i>	
<i>1970-80</i>	<i>9.4</i>	<i>5.9</i>	<i>36.5</i>	
<i>1960-70</i>	<i>12.4</i>	<i>11.8</i>	<i>17.3</i>	
<i>1950-60</i>	<i>38.5</i>	<i>28.6</i>	<i>232.2</i>	
<i>1950-94</i>	<i>105.9</i>	<i>74.9</i>	<i>711.9</i>	

*Privatized in 1994

Table 3.13: Federal Railways, 1950-2002

Year	Total	full-time	part-time	% of Total
2002	62,100	58,300	3,800	6.1
2001	66,400	63,400	3,000	4.5
2000	73,600	71,000	2,600	3.5
1999	78,400	76,000	2,500	3.1
1998	91,700	89,500	2,200	2.4
1997	101,600	99,400	2,100	2.1
1996	111,600	109,600	2,000	1.8
1995	119,800	118,100	1,700	1.4
1994	128,500	127,000	1,500	1.2
1993	417,700	407,300	10,400	2.5
1992	434,000	423,200	10,800	2.5
1991	473,800	462,000	11,800	2.5
1990	249,800	246,600	3,200	1.3
1989	257,800	254,700	3,100	1.2
1988	268,700	265,700	3,000	1.1
1987	279,200	276,100	3,000	1.1
1986	288,200	285,000	3,100	1.0
1985	297,800	294,700	3,100	1.0
1984	310,100	306,900	3,200	1.0
1983	323,600	319,700	3,900	1.2
1982	335,500	332,200	3,400	1.0
1981	341,800	338,400	3,400	1.0
1980	341,500	338,000	3,500	1.0
1975	422,800	417,900	4,900	1.2
1970	409,200	404,800	4,400	1.1
1965	462,400	458,200	4,200	0.9
1960	495,700	489,900	5,800	1.2
1955	503,400	499,300	4,000	0.8
1950	528,800	525,400	3,400	0.6
<i>% change</i>				
<i>91-2002</i>	<i>-86.9</i>	<i>-87.4</i>	<i>-67.8</i>	
<i>91-2000</i>	<i>-76.5</i>	<i>-76.3</i>	<i>-83.1</i>	
<i>1980-90</i>	<i>-26.8</i>	<i>-27.0</i>	<i>-8.67</i>	
<i>1970-80</i>	<i>-16.5</i>	<i>-16.5</i>	<i>-20.5</i>	
<i>1960-70</i>	<i>-17.5</i>	<i>-17.4</i>	<i>-24.1</i>	
<i>1950-60</i>	<i>-6.3</i>	<i>-6.7</i>	<i>70.6</i>	
<i>1950-96</i>	<i>-78.9</i>	<i>-79.1</i>	<i>-94.1</i>	

Table 3.14: Public Enterprises, 1960-2002

Year	Total	Federal	% of Total	Länder	% of Total	Local	% of Total
2002	70,800	0	0	32,200		38,600	
2001	76,100	0	0	33,200		42,900	
2000	75,400	0	0.0	31,400	41.6	44,000	58.4
1999	82,700	0	0.0	34,300	41.5	48,400	58.5
1998	94,600	0	0.0	36,200	38.3	58,400	61.7
1997	100,700	0	0.0	36,500	36.2	64,100	63.7
1996	104,500	0	0.0	39,700	38.0	64,800	62.0
1995	115,000	100	0.1	42,400	36.9	72,500	63.0
1994	123,300	3,200	2.6	45,200	36.7	74,900	60.8
1993	175,700	3,800	2.2	90,800	51.7	81,100	46.2
1992	187,000	4,300	2.3	100,900	54.0	81,800	43.7
1991	182,700	4,600	2.5	100,400	55.0	77,700	42.5
1990*	133,000	4,400	3.3	59,100	44.4	69,500	52.3
1989	132,400	4,200	3.2	58,100	43.9	70,100	52.9
1988	134,100	4,000	3.0	59,700	44.5	70,400	52.5
1987	135,000	3,600	2.7	61,000	45.2	70,400	52.1
1986	134,300	3,000	2.2	60,800	45.3	70,500	52.5
1985	130,700	3,000	2.3	60,500	46.3	67,200	51.4
1984	129,500	3,100	2.4	59,200	45.7	67,200	51.9
1983	128,300	3,200	2.5	57,500	44.8	67,600	52.7
1982	129,900	3,400	2.6	58,200	44.8	68,300	52.6
1981	129,900	3,500	2.7	58,400	45.0	68,000	52.3
1980	130,400	3,600	2.8	58,200	44.6	68,600	52.6
1975	136,800	3,900	2.8	59,300	43.4	73,600	53.8
1970	153,600	4,400	2.9	60,300	39.3	88,900	57.9
1965	176,300	4,300	2.4	65,700	37.3	106,300	60.3
1960	201,600	4,600	2.3	75,200	37.3	121,800	60.4
<i>% change</i>							
<i>91-2002</i>	<i>-61.2</i>	<i>-99.9</i>		<i>-67.9</i>		<i>-50.3</i>	
<i>91-2000</i>	<i>-58.7</i>	<i>-99.9</i>		<i>-68.7</i>		<i>-43.4</i>	
<i>1980-90</i>	<i>2.0</i>	<i>22.2</i>		<i>1.6</i>		<i>1.3</i>	
<i>1970-80</i>	<i>-15.1</i>	<i>-18.2</i>		<i>-3.5</i>		<i>-22.8</i>	
<i>1960-70</i>	<i>-23.8</i>	<i>-4.4</i>		<i>-19.8</i>		<i>-27.0</i>	
<i>1960-90</i>	<i>-34.0</i>	<i>-4.4</i>		<i>-21.4</i>		<i>-42.9</i>	

* 1960-1990 full-time personnel

Table 3.15: Economic Services, 1960-2002

Year	Total	Federal	% of Total	Länder	% of Total	Local	% of Total
2002	19,800	1,100	5.6	8,200	41.4	10,500	53.0
2001	20,800	2,000	9.6	9,300	44.7	9,500	45.7
2000	22,900	2,100	9.2	11,000	48.0	9,800	42.8
1999	22,800	2,100	9.2	10,500	46.1	10,200	44.7
1998	23,400	2,100	9.0	11,300	48.3	10,000	42.7
1997	23,000	2,100	9.1	11,200	48.7	9,700	42.2
1996	25,800	1,900	7.4	12,800	49.6	11,100	43.0
1995	26,900	2,100	7.8	13,200	49.1	11,600	43.1
1994	29,400	2,000	6.8	15,400	52.4	12,000	40.8
1993	28,400	2,000	7.0	15,300	53.9	11,100	39.1
1992	28,000	1,900	6.8	14,900	53.2	11,200	40.0
1991	33,300	1,800	5.4	21,000	63.1	10,500	31.5
1990*	19,600	1,400	7.1	12,600	64.3	5,600	28.6
1989	21,400	3,200	14.9	12,600	58.9	5,600	26.2
1988	21,800	3,400	15.6	12,700	58.3	5,700	26.1
1987	21,600	3,400	15.7	12,600	58.3	5,600	26.0
1986	21,400	3,400	15.9	12,600	58.9	5,400	25.2
1985	21,700	3,400	15.7	12,500	57.6	5,800	26.7
1984	21,200	3,400	16.0	12,200	57.6	5,600	26.4
1983	20,800	3,400	16.4	11,900	57.2	5,500	26.4
1982	20,800	3,500	16.8	11,800	56.7	5,500	26.4
1981	21,200	3,500	16.5	11,700	55.2	6,000	28.3
1980	20,500	3,500	17.1	11,700	57.1	5,300	25.8
1975	21,700	3,900	18.0	12,800	59.0	5,000	23.0
1970	21,500	3,900	18.1	13,300	61.9	4,300	20.0
1965	19,100	3,100	16.2	12,500	65.5	3,500	18.3
1960	16,600	2,900	17.5	11,600	69.9	2,100	12.6
<i>% change</i>							
<i>91-2002</i>	<i>-40.5</i>	<i>-38.9</i>		<i>-61.0</i>		<i>0.0</i>	
<i>91-2000</i>	<i>-31.2</i>	<i>16.7</i>		<i>-47.6</i>		<i>-6.7</i>	
<i>1980-90</i>	<i>-4.4</i>	<i>-60.0</i>		<i>7.7</i>		<i>5.7</i>	
<i>1970-80</i>	<i>-4.6</i>	<i>-10.36</i>		<i>-12.0</i>		<i>23.2</i>	
<i>1960-70</i>	<i>29.5</i>	<i>34.5</i>		<i>14.7</i>		<i>104.8</i>	
<i>1960-90</i>	<i>18.1</i>	<i>-51.7</i>		<i>8.6</i>		<i>166.7</i>	

* 1960-1990 full-time personnel

Table 3.16: Citizens per Public Official, by Task Area, 1960 - 2002

Year	Task Areas																	Total
	General Administration	Defense (Civilians)	Defense (Military) ¹	Police	Justice	Education	Social Services	Health	Agriculture	Housing	Transportation	Postal Services	Railways	Public Enterprises	Economic Services	Semi-State	other ²⁾	
2002	131	651	448	188	428	63	259	220	2,965	535	951	--	1328	1187	4,162	140	339	17
2001	130	633	448	188	427	62	260	210	2,919	511	886	--	1240	1097	3,955	150	361	17
2000	127	613	443	187	423	53	418	198	2,630	489	831	--	1,115	1,088	3,583	168	433	17
1999	125	601	433	187	421	51	418	191	2,766	483	817	--	1,048	995	3,604	180	451	17
1998	123	600	431	185	416	50	402	179	2,735	459	794	--	894	867	3,506	183	490	16
1997	121	571	428	184	418	49	382	170	2,718	438	763	--	808	815	3,568	182	546	16
1996	118	550	430	182	417	49	364	160	2,571	404	728	--	735	785	3,179	177	625	16
1995	115	523	420	182	414	49	315	148	2,452	386	697	--	682	710	3,036	182	711	15
1994	112	493	383	182	416	48	311	136	2,326	368	677	135	634	660	2,769	191	764	13
1993	115	464	352	186	426	49	303	130	2,159	386	669	127	194	462	2,858	210	433	13
1992	113	431	328	190	433	46	295	122	2,005	355	626	126	186	431	2,878	230	442	12
1991	110	390	311	190	441	46	271	117	2,133	369	638	121	169	438	2,402	247	470	12
1990 ³⁾	132	383	259	203	436	78	450	179	2,762	383	626	144	257	476	3,227	294	1,550	16
1985	127	355	244	204	444	73	470	177	2,310	393	592	139	207	467	2,810	280	1,773	15
1980	128	358	260	211	490	72	495	185	2,413	410	593	145	182	472	3,002	303	2,065	15
1975	135	347	263	239	525	81	536	208	2,761	465	549	148	148	452	2,850	311	2,931	16
1970	147	355	261	268	569	105	569	252	2,757	544	499	151	150	395	2,821	366	3,243	17
1965	147	378	282	282	592	129	525	284	2,946	549	532	151	128	332	3,069	395	3,428	18
1960	149	645	370	301	596	153	498	320	2,704	606	593	154	113	275	3,339	398	3,647	19

¹⁾ without conscripts

²⁾ including local special purpose associations

³⁾ 1960-1990 full-time personnel

Table 4.1: Public Employment by Status Group, 1950-2002*

Year	Total Public Employment	Civil Service		Employees		Laborers	
	N = 100%	abs.	%	abs.	%	abs.	%
2002	4,088,000	1,736,200	42.5	1,807,500	44.2	544,400	13.3
2001	4,142,300	1,728,600	41.7	1,842,400	44.5	571,300	13.8
2000	4,420,900	1,818,800	41.1	1,965,500	44.5	636,600	14.4
1999	4,512,100	1,831,600	40.6	2,014,500	44.6	666,000	14.8
1998	4,619,300	1,845,000	39.9	2,075,600	44.9	698,700	15.1
1997	4,713,300	1,859,700	39.5	2,122,000	45.0	731,600	15.5
1996	4,813,900	1,853,200	38.5	2,176,800	45.2	783,900	16.3
1995	4,921,100	1,848,200	37.6	2,235,700	45.4	837,200	17.0
1994	5,666,400	2,141,600	37.8	2,402,300	42.4	1,122,500	19.8
1993	6,114,800	2,134,300	34.9	2,595,200	42.4	1,385,300	22.7
1992	6,305,000	2,112,500	33.5	2,701,600	42.9	1,490,900	23.6
1991	6,412,700	2,069,000	32.3	2,738,400	42.7	1,605,300	25.0
1990	4,656,300	2,054,900	44.1	1,575,300	33.8	1,026,100	22.0
1989	4,606,800	2,052,600	44.6	1,534,400	33.3	1,019,800	22.1
1988	4,620,600	2,063,700	44.7	1,524,300	33.0	1,032,600	22.3
1987	4,630,100	2,067,000	44.6	1,512,000	32.7	1,051,100	22.7
1986	4,622,200	2,060,200	44.6	1,505,900	32.6	1,056,100	22.8
1985	4,598,800	2,062,600	44.8	1,475,400	32.1	1,060,800	23.1
1984	4,558,200	2,057,200	45.1	1,447,300	31.8	1,053,700	23.1
1983	4,543,300	2,055,800	45.3	1,431,800	31.5	1,055,700	23.2
1982	4,531,900	2,037,700	45.0	1,432,600	31.6	1,061,600	23.4
1981	4,511,900	2,005,800	44.5	1,435,400	31.8	1,070,700	23.7
1980	4,430,200	1,972,200	44.5	1,401,900	31.6	1,056,100	23.8
1975	4,201,500	1,843,400	43.9	1,278,100	30.4	1,080,000	25.7
1970	3,692,600	1,642,200	44.5	1,041,100	28.2	1,009,300	27.3
1965	3,396,900	1,506,400	44.4	871,700	25.7	1,018,800	30.0
1960	3,004,100	1,321,400	44.0	698,000	23.2	984,700	32.8
1955	2,510,100	1,052,200	41.9	563,500	22.5	894,400	35.6
1950	2,199,900	788,400	35.8	547,900	24.9	863,600	39.3
<i>% change</i>							
<i>91-2002</i>	<i>-36.3</i>	<i>-16.1</i>		<i>-34.0</i>		<i>-66.1</i>	
<i>91-2000</i>	<i>-31.1</i>	<i>-12.1</i>		<i>-28.2</i>		<i>-60.3</i>	
<i>1990-91</i>	<i>37.7</i>	<i>0.7</i>		<i>73.8</i>		<i>56.5</i>	
<i>1980-90</i>	<i>5.1</i>	<i>4.2</i>		<i>12.4</i>		<i>-2.8</i>	
<i>1970-80</i>	<i>20.0</i>	<i>20.</i>		<i>34.7</i>		<i>4.6</i>	
<i>1960-70</i>	<i>22.9</i>	<i>24.3</i>		<i>49.2</i>		<i>2.5</i>	
<i>1950-60</i>	<i>36.6</i>	<i>67.6</i>		<i>27.4</i>		<i>14.0</i>	
<i>1950-96</i>	<i>118.8</i>	<i>135.0</i>		<i>297.3</i>		<i>-9.2</i>	

* Core public administration

Table 4.2.: Public Employment by Status Group and Level of Government (in 1,000), 1950-2002*

Year	Federal *				Länder				Local *				Total
	Total (100%)	civil servants	employees	Laborers	Total (100%)	civil servants	employees	laborers	Total (100%)	civil servants	employees	laborers	
2002	552.4	373.9 68%	99.0 18%	79.5 14%	2,156.0	1,245.2 58%	787.2 36%	123.6 6%	1,512.7	178.3 11%	967.0 64%	367.4 25%	4,221.1
2001	557.1	377.7 68%	100.7 18%	81.8 14%	2,178.9	1,238.1 57%	811.7 37%	129.0 6%	1,537.1	177.4 11%	973.6 64%	386.1 25%	4,273.1
2000	575.6	387.7 67%	103.0 18%	84.9 15%	2,273.3	1,252.3 55%	875.3 39%	145.5 6%	1,572.0	178.6 11%	987.2 63%	406.2 26%	4,420.9
1999	588.7	396.9 67%	103.9 18%	87.8 15%	2,313.7	1,256.2 54%	904.1 39%	153.2 7%	1,609.7	178.3 11%	1,006.4 63%	425.0 26%	4,512.1
1998	607.7	409.2 67%	108.4 18%	90.1 15%	2,363.1	1,256.9 53%	942.4 39%	163.7 7%	1,648.5	178.8 11%	1,024.8 62%	444.8 27%	4,619.3
1997	628.0	420.9 67%	112.7 18%	94.3 15%	2,401.9	1,258.6 52%	968.1 40%	175.1 7%	1,683.3	180.0 11%	1,041.2 62%	462.2 27%	4,713.3
1996	644.7	429.9 67%	116.1 18%	98.7 15%	2,429.9	1,244.2 51%	998.8 41%	186.7 8%	1,739.3	178.8 10%	1,062.0 61%	498.5 29%	4,813.9
1995	666.1	442.1 66%	119.8 18%	104.2 16%	2,453.5	1,227.1 50%	1,025.9 42%	200.5 8%	1,801.6	179.0 10%	1,090.1 60%	532.4 30%	4,921.1
1994	1,311.1	761.0 58%	214.1 16%	336.0 26%	2,482.0	1,201.3 48%	1,061.8 43%	218.9 9%	1,873.3	179.2 10%	1,126.3 60%	567.8 30%	5,666.4
1993	1,657.3	797.3 48%	336.3 20%	523.7 32%	2,510.8	1,160.8 46%	1,084.0 43%	266.0 11%	1,946.7	176.3 9%	1,174.8 60%	595.6 31%	6,114.8
1992	1,700.1	812.0 48%	357.2 21%	530.9 31%	2,531.4	1,126.0 44%	1,122.3 44%	283.1 11%	2,073.5	174.5 8%	1,222.1 59%	676.9 33%	6,305.0
1991	1,789.4	826.1 46%	330.8 18%	632.5 35%	2,571.9	1,072.4 42%	1,205.3 47%	294.2 11%	2,051.3	170.4 8%	1,202.3 59%	678.6 33%	6,412.6
1990	1,362.9	819.6 60%	165.9 12%	377.4 28%	1,934.8	1,070.1 55%	663.2 34%	201.5 10%	1,358.1	164.9 12%	746.1 55%	447.1 33%	4,655.8
1989	1,368.5	830.0 61%	162.4 12%	376.1 27%	1,911.4	1,061.7 56%	650.4 41%	199.3 10%	1,327.3	161.3 12%	721.5 54%	444.5 33%	4,607.2
1988	1,379.1	839.8 61%	160.7 12%	378.6 27%	1,914.6	1,064.0 56%	648.2 34%	202.4 11%	1,327.0	160.1 12%	715.3 54%	451.6 34%	4,620.7
1987	1,394.7	845.3 61%	161.7 12%	387.7 28%	1,910.0	1,064.3 56%	641.3 34%	204.4 11%	1,326.3	157.9 12%	709.2 53%	459.2 35%	4,631.0
1986	1,397.3	841.6 60%	163.0 12%	392.7 28%	1,921.5	1,063.1 55%	652.3 34%	206.1 11%	1,303.6	155.9 12%	690.5 53%	457.2 35%	4,622.4
1985	1,414.6	842.9 60%	167.4 12%	404.3 29%	1,914.8	1,066.1 56%	641.7 34%	207.0 11%	1,469.8	354.0 24%	666.3 45%	449.5 31%	4,799.2
1980	1,410.0	829.1 59%	161.1 11%	419.8 30%	1,823.4	999.9 55%	623.1 34%	200.4 11%	1,401.6	348.1 25%	617.7 44%	435.8 31%	4,635.0
1975	1,480.7	840.7 57%	182.6 12%	457.4 31%	1,623.8	867.0 53%	558.6 34%	198.2 12%	1,291.2	329.9 26%	536.9 42%	424.4 33%	4,395.7
1970	1,410.5	799.2 57%	176.3 12%	435.0 31%	1,334.3	702.0 53%	446.7 33%	185.6 14%	1,106.5	299.7 27%	418.1 38%	388.7 35%	3,851.3
1965	1,392.2	781.6 56%	151.4 11%	459.2 33%	1,152.5	593.2 51%	370.4 32%	188.9 16%	947.2	226.6 24%	349.9 37%	370.7 39%	3,491.9
1960	1,266.7	685.1 54%	119.2 9%	462.4 37%	1,003.8	519.5 52%	298.7 30%	185.6 18%	733.5	116.7 16%	280.1 38%	336.7 46%	3,004.0
1955	979.5	478.5 49%	75.1 8%	425.9 43%	881.9	449.1 51%	252.5 29%	180.3 20%	648.8	124.6 19%	236.0 36%	288.2 44%	2,510.2
1950	885.9	354.1 40%	80.6 9%	451.2 51%	739.9	329.0 44%	254.9 34%	156.0 21%	574.0	105.4 18%	212.4 37%	256.2 45%	2,199.8

* Core public administration

Table 4.3: Federal Employment by Status Group (in 1,000), 1950-2002*

Year	Federal Administration				Rail				Post, etc.				Total
	Total (100%)	civil servants	employees	laborers	Total (100%)	civil servants	employees	laborers	Total (100%)	civil servants	employees	laborers	
2002	490.3	315.2 64%	98.4 20%	76.7 16%	62.1	58.7 94%	0.6 1%	2.8 5%	--	-- --	-- --	-- --	552.4
2001	493.8	315.6 64%	99.5 20%	78.6 16%	66.4	62.1 94%	1.2 1%	3.1 5%	--	-- --	-- --	-- --	560.2
2000	502.0	319.1 64%	101.4 20%	81.5 16%	73.6	68.6 93%	1.6 2%	3.4 5%	--	-- --	-- --	-- --	575.6
1999	510.2	322.9 63%	103.2 20%	84.0 16%	78.4	74.0 94%	0.7 1%	3.8 5%	--	-- --	-- --	-- --	588.7
1998	516.0	324.0 63%	106.1 21%	85.9 17%	91.7	85.2 93%	2.3 3%	4.2 5%	--	-- --	-- --	-- --	607.7
1997	526.4	326.3 62%	110.3 21%	89.7 17%	101.6	94.6 93%	2.4 2%	4.6 5%	--	-- --	-- --	-- --	628.0
1996	533.1	325.7 61%	113.7 21%	93.7 18%	111.6	104.2 93%	2.4 2%	5.0 5%	--	-- --	-- --	-- --	644.7
1995	546.3	328.4 60%	119.1 22%	98.8 18%	119.8	113.7 95%	0.7 --	5.4 5%	--	-- --	-- --	-- --	666.1
1994	577.6	345.2 60%	125.1 22%	107.3 19%	128.5	122.2 95%	0.6 --	5.7 5%	605.0	293.6 48%	88.4 15%	223.0 37%	1,311.1
1993	602.8	362.5 60%	126.0 21%	114.3 19%	417.7	128.0 31%	115.2 28%	174.5 42%	636.8	306.8 48%	95.1 15%	234.9 37%	1,657.3
1992	624.7	370.1 59%	132.1 21%	122.5 20%	433.9	132.5 31%	128.8 30%	172.6 40%	641.5	309.4 48%	96.3 15%	235.8 37%	1,700.1
1991	652.0	372.6 57%	142.4 22%	137.0 21%	473.9	138.8 29%	81.6 17%	253.5 53%	663.5	314.7 47%	106.8 16%	242.0 36%	1,789.4
1990	576.0	360.1 63%	104.4 18%	111.5 19%	249.8	143.5 57%	6.4 3%	99.9 40%	537.1	316.0 59%	55.1 10%	166.0 31%	1,362.9
1989	579.3	363.5 63%	103.4 18%	112.4 19%	257.8	148.8 58%	6.2 2%	102.8 40%	531.4	317.7 60%	52.8 10%	160.9 30%	1,368.5
1988	582.5	365.9 63%	103.1 18%	113.5 19%	268.7	155.0 58%	6.4 2%	107.3 40%	527.9	318.9 60%	51.2 10%	157.8 30%	1,379.1
1987	583.8	365.9 63%	103.2 18%	114.7 20%	279.2	159.5 57%	6.7 2%	113.0 40%	531.7	319.9 60%	51.8 10%	160.0 30%	1,394.7
1986	579.9	363.4 63%	102.5 18%	114.0 20%	288.2	164.2 57%	7.0 2%	117.0 41%	529.2	314.0 59%	53.5 10%	161.7 31%	1,397.3
1985	579.9	364.3 63%	102.1 18%	113.5 20%	297.8	170.2 57%	7.2 2%	120.4 40%	536.9	308.4 57%	58.1 11%	170.4 32%	1,414.6
1980	566.8	348.5 61%	103.1 18%	115.2 20%	341.5	188.4 55%	8.7 3%	144.4 42%	501.7	292.2 58%	49.3 10%	160.2 32%	1,410.0
1975	568.5	344.6 61%	107.5 19%	116.4 20%	422.8	223.6 53%	10.4 2%	188.8 45%	489.4	272.5 56%	64.7 13%	152.2 31%	1,480.7
1970	543.7	327.9 60%	102.4 19%	113.4 21%	409.2	219.4 54%	9.2 2%	180.6 44%	457.6	251.9 55%	64.7 14%	141.0 31%	1,410.5
1965	499.3	297.6 60%	94.5 19%	107.2 21%	462.4	239.4 52%	7.2 2%	215.8 47%	430.5	244.6 57%	49.7 12%	136.2 32%	1,392.2
1960	364.0	224.1 62%	67.9 19%	72.0 20%	495.7	241.1 49%	2.1 --	252.5 51%	407.0	219.9 54%	49.2 12%	137.9 34%	1,266.7
1955	116.9	64.8 55%	27.3 23%	24.8 21%	503.4	224.9 45%	2.2 --	276.3 55%	359.2	188.8 53%	45.6 13%	124.8 35%	979.5
1950	63.3	32.1 51%	14.1 22%	17.1 27%	528.8	188.6 36%	2.2 --	338.0 64%	293.8	133.4 45%	64.3 22%	96.1 33%	885.9

* Core public administration

Table 4.4: General Administration by Status Group, 1960-2002

Year	Total	Civil servants	% of Total	Employees	% of Total	Laborers	% of Total
2002	372,500	123,400	33.1	210,700	56.6	38,400	10.3
2001	375,600	122,300	32.6	213,300	56.8	40,000	10.6
2000	644,400	294,500	45.7	302,600	47.0	47,300	7.3
1999	658,300	296,500	45.0	310,400	47.2	51,500	7.8
1998	667,100	297,300	44.6	317,700	47.6	52,100	7.8
1997	676,600	302,000	44.6	322,600	47.7	52,000	7.7
1996	694,500	303,900	43.8	335,200	48.2	55,500	8.0
1995	707,100	304,700	43.1	344,000	48.6	58,400	8.3
1994	725,200	302,700	41.7	360,100	49.7	62,400	8.6
1993	704,700	289,000	41.0	356,300	50.6	59,400	8.4
1992	711,200	279,300	39.3	363,300	51.1	68,600	9.6
1991	725,800	263,700	36.3	385,700	53.1	76,400	10.5
1990*	480,200	247,800	51.6	207,300	43.2	25,100	5.2
1989	482,900	248,100	51.4	209,900	43.5	24,900	5.2
1988	488,500	248,700	50.9	214,300	43.9	25,500	5.2
1987	490,300	247,200	50.4	216,200	44.1	26,900	5.5
1986	484,400	246,000	50.8	212,500	43.9	25,900	5.3
1985	480,300	246,400	51.3	209,500	43.6	24,400	5.1
1984	475,500	245,100	51.5	206,400	43.4	24,000	5.0
1983	475,500	244,600	51.4	207,300	43.6	23,600	5.0
1982	479,800	242,500	50.5	211,200	44.0	26,100	5.4
1981	482,700	243,000	50.3	213,300	44.2	26,400	5.5
1980	478,900	238,700	49.8	214,400	44.8	25,800	5.4
1975	457,200	221,900	48.5	208,500	45.6	26,800	5.9
1970	413,800	198,000	47.8	191,700	46.3	24,100	5.8
1965	400,000	183,900	46.0	182,600	45.7	33,500	8.4
1960	370,800	165,100	44.5	160,800	43.4	44,900	12.1
<i>% change</i>							
<i>91-2002</i>		<i>-53.2</i>		<i>-45.4</i>		<i>-49.7</i>	
<i>91-2000</i>		<i>11.7</i>		<i>-21.5</i>		<i>-38.1</i>	
<i>1980-90</i>		<i>3.8</i>		<i>-3.3</i>		<i>-2.7</i>	
<i>1970-80</i>		<i>20.6</i>		<i>11.8</i>		<i>7.0</i>	
<i>1960-70</i>		<i>19.9</i>		<i>19.2</i>		<i>-46.3</i>	
<i>1960-90</i>		<i>50.1</i>		<i>28.9</i>		<i>-44.1</i>	

* 1960-1990 full-time personnel

Table 4.5: Police, Security and Public Order by Status Group, 1960-2002

Year	Total	Civil Servants	% of Total	Employees	% of Total	Laborers	% of Total
2002	438,000	315,400	72.0	107,400	24.5	15,300	3.5
2001	436,700	314,600	72.0	106,600	24.5	15,500	3.5
2000	437,900	314,800	71.9	106,900	24.4	16,100	3.7
1999	440,200	316,300	71.9	106,800	24.3	17,100	3.9
1998	442,600	317,700	71.8	106,700	24.1	18,100	4.1
1997	446,900	319,600	71.5	108,000	24.2	19,200	4.3
1996	450,100	318,300	70.7	111,200	24.7	20,600	4.6
1995	449,700	314,700	70.0	113,100	25.2	21,900	4.9
1994	446,400	309,600	69.4	114,300	25.6	22,500	5.0
1993	435,600	300,800	69.1	112,000	25.7	22,800	5.2
1992	424,500	279,600	65.9	120,700	28.4	24,200	5.7
1991	421,800	245,800	58.3	152,100	36.1	23,900	5.7
1990*	312,400	240,900	77.1	58,900	18.9	12,600	4.0
1989	305,300	236,600	77.5	55,900	18.3	12,800	4.2
1988	302,900	234,300	77.4	55,700	18.4	12,900	4.3
1987	301,900	232,700	77.1	56,000	18.5	13,200	4.4
1986	300,400	232,500	77.4	54,900	18.3	13,000	4.3
1985	299,400	230,600	77.0	55,700	18.6	13,100	4.4
1984	298,400	230,400	77.2	55,100	18.5	12,900	4.3
1983	299,500	231,300	77.2	55,400	18.5	12,800	4.3
1982	298,800	228,300	76.4	57,200	19.1	13,300	4.5
1981	295,100	225,400	76.4	56,400	19.1	13,300	4.5
1980	290,900	221,700	76.2	56,200	19.3	13,000	4.5
1975	258,800	195,600	75.6	50,900	19.7	12,300	4.8
1970	226,500	177,200	78.2	38,200	16.9	11,100	4.9
1965	207,900	160,500	77.2	37,500	18.0	9,900	4.8
1960	184,000	143,300	77.9	31,400	17.1	9,300	5.1
<i>% change</i>							
<i>91-2002</i>		28.3		-29.4		-36.0	
<i>91-2000</i>		28.1		-29.7		-32.6	
<i>1980-90</i>		8.7		4.8		-3.	
<i>1970-80</i>		25.1		47.1		17.1	
<i>1960-70</i>		23.7		21.7		19.3	
<i>1960-90</i>		68.1		87.6		35.5	

* 1960-1990 full-time personnel

Table 4.6: Justice and Penitentiary Personnel by Status Group, 1960-2002

Year	Total	Civil Servants	% of Total	Employees	% of Total	Laborers	% of Total
2002	192,500	124,800	64.8	63,500	33.0	4,200	2.2
2001	192,400	126,900	66.0	61,100	31.8	4,400	2.2
2000	194,000	132,400	68.2	57,100	29.4	4,500	2.3
1999	195,200	137,700	70.5	52,700	27.0	4,800	2.5
1998	196,800	138,900	70.6	52,900	26.9	5,000	2.5
1997	196,500	138,100	70.3	53,200	27.1	5,200	2.6
1996	196,500	136,300	69.4	54,600	27.8	5,600	2.8
1995	197,200	135,300	68.6	56,100	28.4	5,800	2.9
1994	195,800	132,900	67.9	56,900	29.1	6,000	3.1
1993	190,600	126,600	66.4	57,700	30.3	6,300	3.3
1992	186,100	120,900	65.0	58,900	31.6	6,300	3.4
1991	181,200	116,500	64.3	58,700	32.4	6,000	3.3
1990*	145,000	109,500	75.5	33,600	23.2	1,900	1.3
1989	141,600	107,000	75.6	32,900	23.2	1,700	1.2
1988	141,500	105,900	74.8	33,800	23.9	1,800	1.3
1987	140,400	104,200	74.2	34,400	24.5	1,800	1.3
1986	138,400	102,400	74.0	34,200	24.7	1,800	1.3
1985	137,200	101,200	73.8	34,200	24.9	1,800	1.3
1984	134,100	98,400	73.4	34,000	25.4	1,700	1.3
1983	133,500	97,600	73.1	34,100	25.5	1,800	1.3
1982	130,500	95,600	73.3	33,100	25.4	1,800	1.4
1981	128,500	93,400	72.7	33,300	25.9	1,800	1.4
1980	125,400	90,100	71.9	33,400	26.6	1,900	1.5
1975	117,800	83,700	71.1	32,100	27.2	2,000	1.7
1970	106,600	74,800	70.2	30,000	28.1	1,800	1.7
1965	99,000	65,600	66.3	31,400	31.7	2,000	2.0
1960	93,000	61,700	66.3	29,400	31.6	1,900	2.0
<i>% change</i>							
<i>91-2002</i>		<i>7.1</i>		<i>8.2</i>		<i>-30.0</i>	
<i>91-2000</i>		<i>13.6</i>		<i>-2.7</i>		<i>-25.0</i>	
<i>1980-90</i>		<i>21.5</i>		<i>0.6</i>		<i>0</i>	
<i>1970-80</i>		<i>20.4</i>		<i>11.3</i>		<i>5.6</i>	
<i>1960-70</i>		<i>21.2</i>		<i>2.0</i>		<i>-5.3</i>	
<i>1960-90</i>		<i>77.5</i>		<i>14.3</i>		<i>--</i>	

* 1960-1990 full-time personnel

Table 4.7: Education and Research by Status Group, 1960-2002

Year	Total	Civil Servants	% of Total	Employees	% of Total	Laborers	% of Total
2002	1,296,800	662,700	51.1	548,600	42.3	85,500	6.6
2001	1,328,000	657,200	49.5	579,400	43.6	91,400	6.9
2000	1,554,676	669,000	43.0	758,900	48.8	126,800	8.2
1999	1,598,700	664,700	41.6	796,900	49.8	137,000	8.6
1998	1,632,800	662,600	40.6	823,700	50.4	146,500	9.0
1997	1,660,300	660,434	39.8	843,000	50.8	156,800	9.4
1996	1,676,400	648,200	38.7	858,500	51.2	169,700	10.1
1995	1,668,300	634,400	38.0	852,800	51.1	181,100	10.9
1994	1,690,500	619,500	36.6	871,000	51.5	200,000	11.8
1993	1,670,400	604,800	36.2	860,800	51.5	204,800	12.3
1992	1,748,300	599,100	34.3	911,800	52.2	237,400	13.6
1991	1,740,800	590,400	33.9	904,600	52.0	245,800	14.1
1990*	809,100	454,000	56.1	291,900	36.1	63,200	7.8
1989	797,800	452,500	56.7	282,200	35.4	63,100	7.9
1988	806,600	463,000	57.4	280,500	34.8	63,100	7.8
1987	816,400	473,100	57.9	279,600	34.2	63,700	7.8
1986	826,000	482,900	58.5	280,300	33.9	62,800	7.6
1985	836,700	496,800	59.4	277,400	33.2	62,500	7.5
1984	847,100	511,500	60.4	274,500	32.4	61,100	7.2
1983	857,300	523,100	61.0	273,900	31.9	60,300	7.0
1982	864,600	532,400	61.6	270,600	31.3	61,600	7.1
1981	857,400	523,800	61.1	273,100	31.9	60,500	7.1
1980	849,700	519,400	61.1	270,800	31.9	59,500	7.0
1975	761,900	461,600	60.6	245,800	32.3	54,500	7.2
1970	576,900	364,000	63.1	164,300	28.5	48,600	8.4
1965	455,300	293,700	64.5	116,100	25.5	45,500	10.0
1960	361,800	245,900	68.0	73,800	20.4	42,100	11.6
<i>% change</i>							
<i>91-2002</i>		<i>12.2</i>		<i>-39.4</i>		<i>-65.2</i>	
<i>91-2000</i>		<i>13.3</i>		<i>-16.1</i>		<i>-48.4</i>	
<i>1980-90</i>		<i>-12.6</i>		<i>7.8</i>		<i>6.2</i>	
<i>1970-80</i>		<i>42.7</i>		<i>64.8</i>		<i>22.4</i>	
<i>1960-70</i>		<i>48.0</i>		<i>122.6</i>		<i>15.4</i>	
<i>1960-90</i>		<i>84.6</i>		<i>295.5</i>		<i>50.1</i>	

* 1960-1990 full-time personnel

Table 4.8: Social Service Personnel by Status Group, 1960-2002

Year	Total	Civil Servants	% of Total	Employees	% of Total	Laborers	% of Total
2002	317,900	43,500	13.7	243,800	76.7	30,600	9.6
2001	315,700	43,700	13.8	240,800	76.3	31,200	9.9
2000	196,500	44,100	22.4	134,700	68.5	17,700	9.0
1999	196,600	44,300	22.5	134,700	68.5	17,600	9.0
1998	203,900	44,500	21.8	138,600	68.0	20,900	10.3
1997	214,700	44,500	20.7	145,900	68.0	24,400	11.4
1996	225,100	43,600	19.4	154,200	68.5	27,300	12.1
1995	259,200	43,100	16.6	181,300	69.9	34,800	13.4
1994	262,200	41,900	16.0	183,100	69.8	37,200	14.2
1993	268,000	39,600	14.8	187,300	69.9	41,100	15.3
1992	272,800	38,200	14.0	189,200	69.4	45,400	16.6
1991	295,100	38,000	12.9	202,400	68.6	54,700	18.5
1990*	140,500	34,400	24.5	89,300	63.6	16,800	12.0
1989	138,700	34,000	24.5	88,200	63.6	16,500	11.9
1988	137,600	33,500	24.3	87,700	63.7	16,400	11.9
1987	137,800	33,100	24.0	88,200	64.0	16,500	12.0
1986	133,000	32,400	24.4	84,500	63.5	16,100	12.1
1985	129,800	31,300	24.1	81,900	63.1	16,600	12.8
1984	128,800	31,300	24.3	81,700	63.4	15,800	12.3
1983	127,500	31,200	24.5	81,100	63.6	15,200	11.9
1982	125,700	30,000	23.9	81,100	64.5	14,600	11.6
1981	126,000	29,900	23.7	81,300	64.5	14,800	11.7
1980	124,300	29,400	23.7	80,300	64.6	14,600	11.7
1975	115,300	27,200	23.6	74,200	64.4	13,900	12.1
1970	106,600	25,300	23.7	68,100	63.9	13,200	12.4
1965	111,700	26,200	23.5	71,200	63.7	14,300	12.8
1960	111,200	25,800	23.2	72,800	65.5	12,600	11.3
<i>% change</i>							
<i>91-2002</i>		<i>14.5</i>		<i>20.5</i>		<i>-44.1</i>	
<i>91-2000</i>		<i>16.1</i>		<i>-33.4</i>		<i>-67.6</i>	
<i>1980-90</i>		<i>17.0</i>		<i>11.2</i>		<i>15.1</i>	
<i>1970-80</i>		<i>16.2</i>		<i>17.9</i>		<i>10.6</i>	
<i>1960-70</i>		<i>-1.9</i>		<i>-6.5</i>		<i>4.8</i>	
<i>1960-90</i>		<i>33.3</i>		<i>22.7</i>		<i>33.3</i>	

* 1960-1990 full-time personnel

Table 4.9: Health, Environment and Recreation by Status Group, 1960-2002

Year	Total	Civil Servants	% of Total	Employees	% of Total	Laborers	% of Total
2002	373,800	13,400	3.6	284,100	76.0	76,300	20.4
2001	391,300	13,900	3.6	294,500	75.3	82,900	21.1
2000	414,800	12,400	3.0	313,200	75.5	89,200	21.5
1999	430,200	12,900	3.0	322,900	75.0	94,400	21.9
1998	459,400	13,200	2.9	345,000	75.1	101,200	22.0
1997	481,900	13,600	2.8	357,800	74.2	110,500	22.9
1996	511,000	13,200	2.6	371,600	72.7	126,200	24.7
1995	550,700	13,300	2.4	399,800	72.6	137,600	25.0
1994	601,300	14,700	2.4	433,900	72.2	152,700	25.4
1993	624,100	12,100	1.9	461,900	74.0	150,100	24.1
1992	660,500	12,000	1.8	480,500	72.7	168,000	25.4
1991	682,600	12,200	1.8	499,200	73.1	171,200	25.1
1990*	354,000	11,700	3.3	251,500	71.0	90,800	25.6
1989	349,400	11,600	3.3	245,700	70.3	92,100	26.4
1988	352,000	11,800	3.4	245,800	69.8	94,400	26.8
1987	353,500	12,000	3.4	245,200	69.4	96,300	27.2
1986	347,800	11,900	3.4	241,200	69.4	94,700	27.2
1985	344,200	12,500	3.6	236,300	68.7	95,400	27.7
1984	339,500	12,400	3.7	232,200	68.4	94,900	28.0
1983	338,000	12,400	3.7	231,000	68.3	94,600	28.0
1982	335,400	13,700	4.1	228,600	68.2	93,100	27.8
1981	340,100	12,900	3.8	230,600	67.8	96,600	28.4
1980	332,800	13,100	3.9	224,000	67.3	95,700	28.8
1975	297,000	13,800	4.6	190,700	64.2	92,500	31.1
1970	241,100	14,300	5.9	142,800	59.2	84,000	34.8
1965	206,500	13,700	6.6	117,300	56.8	75,500	36.6
1960	173,000	12,700	7.3	95,800	55.4	64,500	37.3
<i>% change</i>							
<i>91-2002</i>		9.8		-43.1		-55.4	
<i>91-2000</i>		1.6		-37.3		-47.9	
<i>1980-90</i>		-10.7		12.3		-5.1	
<i>1970-80</i>		-8.4		56.9		13.9	
<i>1960-70</i>		12.6		49.1		30.2	
<i>1960-90</i>		-7.9		162.5		40.8	

* 1960-1990 full-time personnel

Table 5.1: Career Groups by Status Group (in 1,000), 1960-2002¹⁾

Year	Civil Service						Employees						Total											
	Higher Service		„Elevated“ Service		Simple & Middle S.		Total (=100%)		Higher Service		„Elevated“ Service		Simple & Middle S.		Total (=100%)		Higher Service		„Elevated“ Service		Simple & Middle S.		Total (=100%)	
	abs.	%	abs.	%	abs.	%			abs.	%	abs.	%	abs.	%			abs.	%	abs.	%	abs.	%		
2002	389.2	22	834.7	46	573.6	32	1,797.5	242.2	13	466.7	26	1,096.4	61	1,805.3	631.4	18	1,301.4	36	1,670.0	46	3,602.8			
2001	383.7	22	828.6	48	527.3	30	1,739.6	252.0	14	476.1	25	1,130.4	61	1,858.5	635.7	18	1,304.7	36	1,657.7	46	3,598.1			
2000	393.4	22	828.6	46	596.8	33	1,818.8	257.6	13	485.7	25	1,191.7	62	1,935.0	651.0	17	1,314.3	35	1,788.5	48	3,753.8			
1999	396.8	22	822.9	45	611.8	33	1,831.5	254.9	13	493.8	25	1,226.5	62	1,975.2	651.7	17	1,316.7	35	1,838.3	48	3,806.7			
1998	399.8	22	813.6	45	631.6	34	1,845.0	254.1	12	514.3	25	1,267.7	62	2,036.1	653.9	17	1,327.9	34	1,899.3	49	3,881.1			
1997	396.0	21	812.0	44	651.8	35	1,859.8	234.7	12	525.3	26	1,269.7	63	2,029.7	630.7	16	1,337.3	34	1,921.5	49	3,889.5			
1996	405.6	22	780.4	42	667.2	36	1,853.2	217.0	10	552.4	27	1,308.7	63	2,078.2	622.6	16	1,332.8	34	1,975.9	50	3,931.4			
1995	394.1	21	769.6	42	684.5	37	1,848.2	209.0	10	574.4	27	1,345.9	63	2,129.3	603.1	15	1,344.0	34	2,030.4	51	3,977.5			
1994	394.7	18	786.8	37	960.1	45	2,141.6	216.0	9	604.2	26	1,479.4	65	2,299.6	610.7	14	1,391.0	31	2,439.5	55	4,441.2			
1993	383.5	18	765.4	36	985.5	46	2,134.4	223.6	9	629.9	25	1,633.8	66	2,487.3	607.1	14	1,395.3	29	2,619.3	57	4,621.7			
1992 ³⁾	380.2	18	746.7	25	985.7	47	2,112.6	226.5	9	590.6	24	1,687.8	67	2,504.9	606.6	13	1,337.3	29	2,673.5	58	4,617.4			
1991 ²⁾	321.7	20	566.8	35	736.2	45	1,624.7	116.9	10	238.1	20	832.6	70	1,187.6	438.6	16	804.9	29	1,568.8	56	2,812.3			
1990	318.5	20	567.8	35	745.4	46	1,631.7	112.8	10	230.8	20	831.5	71	1,175.1	431.3	15	798.6	28	1,576.9	56	2,806.8			
1989	315.2	19	564.1	35	751.8	46	1,631.1	102.8	9	222.0	19	828.4	72	1,153.2	418.0	15	786.1	28	1,580.2	57	2,784.3			
1988	316.2	19	570.6	35	760.3	46	1,647.1	100.3	9	219.0	19	838.1	72	1,157.4	416.5	15	789.6	28	1,598.4	57	2,804.5			
1986	318.6	19	579.6	35	766.4	46	1,664.6	95.5	8	217.4	19	834.6	73	1,147.5	414.1	15	797.0	28	1,601.0	57	2,812.1			
1983	335.6	20	594.9	35	770.5	45	1,701.0	92.5	8	215.0	19	819.8	73	1,127.3	428.1	15	809.9	29	1,590.3	56	2,828.3			
1980	313.2	19	593.0	35	766.3	46	1,672.5	86.2	8	213.0	19	826.6	73	1,125.8	399.4	14	806.0	29	1,592.9	57	2,798.3			
1977	289.5	18	577.1	35	763.6	47	1,630.2	71.0	7	201.1	19	781.2	74	1,053.3	360.5	13	778.2	29	1,544.8	58	2,683.5			
1974	264.3	17	527.1	34	743.6	48	1,535.0	68.4	6	187.8	18	798.5	76	1,054.7	332.7	13	714.9	28	1,542.1	60	2,589.7			
1972	240.4	16	507.3	34	735.9	50	1,483.6	61.9	6	168.1	17	764.6	77	994.6	302.3	12	675.4	27	1,500.5	61	2,478.2			
1969	209.0	15	460.7	33	709.0	51	1,378.7	45.9	5	135.3	16	679.8	79	861.0	254.9	11	596.0	27	1,388.8	62	2,239.7			
1966	181.5	14	428.2	32	709.4	54	1,319.1	39.5	5	125.9	15	649.3	80	814.7	221.0	10	554.1	26	1,358.7	64	2,133.8			
1963	151.8	12	404.1	32	692.3	55	1,248.2	36.0	5	103.3	14	600.9	81	740.2	187.8	9	507.4	26	1,293.2	65	1,988.4			
1960	128.8	11	378.7	32	663.9	57	1,171.4	30.5	5	89.1	14	534.8	82	654.4	159.3	9	467.8	26	1,198.7	66	1,825.8			

1) core public administration

2) West Germany only, 1960-1991 without military personnel

3) since 1992 including part-time personnel with more than half of the regular working-time, 1992 without East-German part-time personnel

Table 5.2: Career Groups at the Federal Level, 1960-2002¹⁾

a) Total Federal Level Employment

Year	Higher Service		„Elevated“ Service		Simple/ Middle Service		Total (=100%)
	abs.	%	abs.	%	abs.	%	
2002	38,300	8	88,400	19	344,800	73	471,500
2001	38,200	8	89,200	19	351,000	73	478,400
2000	38,400	8	91,200	19	361,100	74	490,700
1999	38,200	8	92,400	18	370,200	74	500,800
1998	38,700	7	95,000	18	383,900	74	517,600
1997	39,400	7	98,400	18	395,800	74	533,700
1996	39,900	7	101,100	19	404,600	74	545,600
1995	40,500	7	102,800	18	418,300	75	561,600
1994	48,600	5	172,000	18	747,500	77	968,100
1993	52,200	5	196,500	17	877,600	78	1,126,300
1992 ³⁾	49,300	4	183,700	16	918,700	80	1,151,700
1991 ²⁾	26,800	4	117,500	17	533,800	79	678,100
1990	26,100	4	117,400	17	542,200	79	685,700
1989	25,500	4	116,600	17	549,800	79	691,900
1988	25,300	4	114,600	16	560,600	80	700,500
1986	25,000	4	113,200	16	569,600	80	707,800
1983	25,200	3	112,500	16	584,000	81	721,700
1980	24,200	3	106,800	15	591,500	82	722,500
1977	23,700	3	106,300	14	610,400	82	740,400
1974	24,200	3	106,300	14	629,200	83	759,700
1972	23,700	3	103,300	14	630,700	83	757,700
1969	21,400	3	97,600	14	600,300	83	719,300
1966	19,600	3	96,100	13	605,300	84	721,000
1963	17,900	3	88,800	13	590,100	85	696,800
1960	15,800	2	80,100	12	552,200	85	648,100

b) General Administration

Year	Higher Service		„Elevated“ Service		Simple/ Middle Service		Total (=100%)
	abs.	%	abs.	%	abs.	%	
2002	38,000	9	80,100	20	294,200	71	412,300
2001	37,700	9	80,000	19	297,400	72	415,100
2000	37,800	9	80,600	19	302,100	72	420,500
1999	37,600	9	81,000	19	307,600	72	426,200
1998	37,900	9	80,900	19	311,200	72	430,100
1997	38,500	9	82,900	19	315,300	72	436,700
1996	38,800	9	84,100	19	316,100	72	439,000
1995	39,000	9	85,000	19	323,200	72	447,200
1994	40,000	9	86,400	18	343,600	73	470,000
1993	41,200	9	88,100	18	359,000	73	488,300
1992 ³⁾	42,000	8	90,600	18	368,600	74	501,200
1991 ²⁾	21,100	10	48,100	24	133,000	66	202,200
1990	20,600	10	48,300	24	135,100	66	204,000
1989	19,900	10	48,100	24	135,500	66	203,500
1988	19,800	10	47,900	23	135,800	67	203,500
1986	19,300	10	47,700	23	135,700	67	202,700
1983	19,500	10	48,000	23	138,100	67	205,600
1980	19,300	9	47,000	23	138,200	68	204,500
1977	18,700	9	47,800	24	137,000	67	203,500
1974	18,600	9	46,900	23	141,900	68	207,400
1972	18,100	9	45,600	22	140,300	69	204,000
1969	16,300	9	42,300	22	133,100	69	191,700
1966	14,900	8	40,500	22	130,600	70	186,000
1963	13,400	8	35,900	21	119,600	71	168,900
1960	11,600	8	29,700	21	100,400	71	141,700

c) Railways

Year	Higher Service		„Elevated“ Service		Simple/ Middle Service		Total (=100%)
	abs.	%	abs.	%	abs.	%	
2002	400	1	8,300	14	50,600	85	59,300
2001	400	1	9,200	15	53,600	84	63,200
2000	600	1	10,600	15	59,000	84	70,200
1999	600	1	11,400	15	62,600	84	74,600
1998	800	1	14,100	16	72,700	83	87,600
1997	900	1	15,500	16	80,500	83	96,900
1996	1,100	1	17,000	16	88,500	83	106,600
1995	1,500	1	17,800	16	95,100	83	114,400
1994	1,700	1	18,300	15	102,500	84	122,500
1993	3,900	2	41,100	17	197,400	81	242,400
1992 ³⁾	2,900	1	35,300	14	217,900	85	256,100
1991 ²⁾	2,000	1	20,100	14	121,500	85	143,600
1990	1,900	1	20,500	14	125,500	85	147,900
1989	1,900	1	21,000	14	130,400	85	153,300
1988	1,900	1	21,600	14	136,500	85	160,000
1986	2,100	1	22,600	13	145,100	85	169,800
1983	2,200	1	24,100	13	161,800	86	188,100
1980	2,100	1	23,500	12	170,700	87	196,300
1977	2,300	1	24,600	11	195,100	88	222,000
1974	2,800	1	25,700	11	204,500	88	233,000
1972	2,700	1	25,200	11	205,800	88	233,700
1969	2,600	1	24,500	11	201,800	88	228,900
1966	2,600	1	25,000	10	214,900	89	242,500
1963	2,600	1	25,200	10	217,300	89	245,100
1960	2,500	1	25,000	10	215,700	89	243,200

d) Post and Telecommunication

Year	Higher Service		„Elevated“ Service		Simple/ Middle Service		Total (=100%)
	abs.	%	abs.	%	abs.	%	
1994	6,900	2	67,300	18	301,400	80	375,600
1993	7,100	2	67,300	17	321,200	81	395,600
1992 ³⁾	4,400	1	57,800	15	332,200	84	394,400
1991 ²⁾	3,700	1	49,300	15	279,300	84	332,300
1990	3,600	1	48,600	15	281,600	84	333,800
1989	3,700	1	47,500	14	283,900	85	335,100
1988	3,600	1	45,100	13	288,300	86	337,000
1986	3,600	1	42,900	13	288,800	86	335,300
1983	3,500	1	40,400	12	284,100	87	328,000
1980	2,800	1	36,300	11	282,600	88	321,700
1977	2,700	1	33,900	11	278,300	88	314,900
1974	2,800	1	33,700	11	282,800	89	319,300
1972	2,900	1	32,500	10	284,600	89	320,000
1969	2,500	1	30,800	10	265,400	89	298,700
1966	2,100	1	30,600	10	259,800	89	292,500
1963	1,900	1	27,700	10	253,200	90	282,800
1960	1,700	1	25,400	10	236,100	90	263,200

¹⁾ Core public service

²⁾ 1991 West Germany only, 1960-1991 without military personnel

³⁾ since 1992 including part-time personnel with more than half of the regular working-time, 1992 without East-German part-time personnel

Table 5.3: Career Groups in Länder Administration, 1960-2002¹⁾

Year	Higher Service		„Elevated“ Service		Simple/ Middle Service		Total (=100%)
	abs.	%	abs.	%	abs.	%	
2002	512,000	26	904,100	45	584,200	29	2,000,300
2001	514,900	25	908,200	45	604,500	30	2,027,600
2000	529,200	25	914,100	43	659,800	31	2,103,100
1999	527,000	25	917,200	43	683,900	32	2,128,100
1998	526,800	24	922,200	43	717,000	33	2,166,000
1997	503,300	23	931,500	43	732,600	34	2,167,400
1996	493,500	23	923,900	42	762,100	35	2,179,500
1995	471,900	22	930,200	42	789,500	36	2,191,600
1994	470,000	21	905,100	41	825,800	38	2,200,900
1993	458,600	21	883,400	41	835,800	38	2,177,800
1992 ³⁾	459,400	20	849,300	37	966,000	42	2,274,700
1991 ²⁾	344,500	25	482,900	35	547,400	40	1,374,800
1990	340,700	25	484,900	35	551,300	40	1,376,900
1989	331,100	24	481,000	35	550,800	41	1,362,900
1988	330,700	24	489,800	36	557,000	40	1,377,500
1986	332,100	24	504,000	36	559,800	40	1,395,900
1983	349,100	24	523,800	37	554,100	39	1,427,000
1980	324,500	23	530,400	38	555,500	39	1,410,400
1977	292,000	22	516,200	39	522,200	39	1,330,400
1974	264,300	21	466,900	37	519,400	42	1,250,600
1972	239,900	21	438,300	37	489,100	42	1,167,300
1969	200,500	20	379,300	37	447,400	43	1,027,200
1966	170,600	18	345,500	37	428,000	45	944,100
1963	143,600	17	319,800	37	401,800	46	865,200
1960	119,800	15	299,500	38	372,400	47	791,700

¹⁾ core public administration²⁾ 1991 West Germany only, 1960-1991 without military personnel³⁾ since 1992 including part-time personnel with more than half of the regular working-time, 1992 without East-German part-time personnel

Table 5.4: Career Groups in Local Government, 1960-2002¹⁾

Year	Higher Service		„Elevated“ Service		Simple/ Middle Service		Total (=100%)
	abs.	%	abs.	%	abs.	%	
2002	81,100	7	309,000	27	741,000	66	1,131,100
2001	82,700	7	307,300	27	755,900	66	1,145,900
2000	78,800	7	297,300	27	737,500	66	1,113,600
1999	81,400	7	295,400	26	752,600	67	1,129,400
1998	83,600	7	299,800	26	769,300	67	1,152,700
1997	83,500	7	297,200	26	761,300	67	1,142,000
1996	89,100	7	307,700	26	809,200	67	1,206,000
1995	90,700	7	311,000	25	833,600	68	1,235,300
1994	93,200	7	313,600	25	866,300	68	1,273,100
1993	93,300	7	315,400	24	905,800	69	1,314,500
1992 ³⁾	97,900	7	304,300	23	919,900	70	1,322,100
1991 ²⁾	67,200	9	204,500	27	487,600	64	759,300
1990	64,500	9	196,300	26	483,400	65	744,200
1989	61,400	8	188,500	26	479,600	66	729,500
1988	60,500	8	185,200	25	480,800	66	726,500
1986	57,000	8	179,800	25	471,600	67	708,400
1983	53,800	8	173,600	26	452,100	67	679,500
1980	50,600	8	168,800	25	445,900	67	665,300
1977	44,800	7	155,700	25	412,000	67	612,500
1974	44,200	8	141,700	24	393,500	68	579,400
1972	38,700	7	133,800	24	380,700	69	553,200
1969	33,000	7	119,100	24	341,100	69	493,200
1966	30,800	7	112,500	24	325,400	69	468,700
1963	26,300	6	98,800	23	301,300	71	426,400
1960	23,700	6	88,200	23	274,100	71	386,000

¹⁾ core public administration²⁾ 1991 West Germany only, 1960-1991 without military personnel³⁾ since 1992 including part-time personnel with more than half of the regular working-time, 1992 without East-German part-time personnel

Table 5.5: Higher Civil Service by Salary Group and Level of Government, 2002

Salary Group	Total * (=100%)	Federal	%	Länder	%	Local	%
B11-B9, R10-R9	643	235	36.5	357	55.5	51	7.9
B8, R8	189	59	31.2	68	36.0	62	32.8
B7, R7	442	68	15.4	164	37.1	210	47.5
B6, R6	1,587	701	44.2	566	35.7	320	20.2
B5, R5	612	18	2.9	254	41.5	340	55.6
B4, R4	1,043	27	2.6	475	45.5	541	51.9
B3, R3, C4	14,120	1,475	10.4	11,789	83.5	856	6.1
B2, B1	2,685	450	16.8	1,260	46.9	975	36.3
A16, R2, C3	32,238	2,251	7.0	27,077	84.0	2,910	9.0
A15, R1, C2	71,171	8,104	11.4	58,931	82.8	5,136	7.2
A14, C1	91,733	10,557	11.5	74,152	80.8	7,024	7.7
A13	73,138	5,372	7.3	62,822	85.9	4,944	6.8
Total	289,601	29,317	10.1	237,915	82.2	23,369	8.1

* Core public administration (including military), full-time personnel

- A General public service salary scheme
- B Public service leading positions salary scheme
- C University teachers' salary scheme
- R Judges' and state attorneys' salary scheme

Table 6.1: Part-Time Employment by Level of Government, 1950-2002

Year	Federal level			Länder level			Local level			Total		
	Total	part-time		Total	part-time		Total	part-time		Total	part-time	
		n	%		n	%		n	%		n	%
2002	1,003,500	156,800	15.6	2,292,900	614,700	28.2	1,512,800	516,600	34.1	4,809,200	1,288,200	26.8
2001	968,300	132,900	13.7	2,315,700	593,000	25.6	1,537,100	510,900	33.2	4,821,100	1,236,749	25.6
2000	925,700	109,800	11.9	2,412,200	596,000	24.7	1,571,000	506,000	32.2	4,908,900	1,211,800	24.7
1999	906,600	90,700	10.0	2,453,000	579,100	23.6	1,609,700	494,400	30.7	4,969,400	1,164,300	23.4
1998	918,900	80,100	8.7	2,501,200	553,900	22.1	1,648,500	482,100	29.2	5,068,600	1,116,000	22.0
1997	938,800	75,400	8.0	2,541,700	545,000	21.4	1,683,300	458,500	27.2	5,163,800	1,078,900	20.9
1996	962,900	71,900	7.5	2,574,300	542,300	21.1	1,739,300	454,800	26.2	5,276,500	1,069,100	20.2
1995	972,000	66,100	6.8	2,597,500	533,600	20.5	1,801,500	468,300	26.0	5,371,000	1,068,000	19.9
1994	1,597,200	171,300	10.7	2,623,800	530,700	20.2	1,873,300	472,500	25.2	6,094,300	1,174,600	19.3
1993	1,850,600	185,300	10.0	2,727,200	527,500	19.3	1,924,900	420,900	21.9	6,502,600	1,133,700	17.4
1992	1,876,100	178,600	9.5	2,640,900	473,500	17.9	2,140,200	426,400	19.9	6,657,200	1,078,500	16.2
1991	1,958,700	187,500	9.6	2,678,200	458,000	17.1	2,101,000	421,200	20.0	6,737,800	1,066,700	15.8
1990	1,521,500	141,300	9.3	2,039,000	413,200	20.3	1,358,500	317,550	23.4	4,919,000	872,000	17.7
1989	1,522,500	134,100	8.8	2,013,400	413,400	20.5	1,329,100	295,600	22.2	4,865,000	843,000	17.3
1988	1,532,000	130,300	8.5	2,015,300	389,000	19.3	1,328,400	297,700	22.4	4,875,700	817,000	16.8
1987	1,548,000	130,600	8.4	2,009,550	373,500	18.6	1,328,450	293,000	22.1	4,886,000	797,000	16.3
1986	1,548,550	128,400	8.3	2,020,100	373,800	18.5	1,305,350	295,800	22.7	4,874,000	798,000	16.4
1985	1,560,900	134,300	8.6	2,012,450	354,300	17.6	1,270,650	281,400	22.1	4,844,000	770,000	15.9
1984	1,562,700	131,400	8.4	1,992,400	328,900	16.5	1,243,900	272,700	21.9	4,799,000	733,000	15.3
1983	1,553,500	109,300	7.0	1,973,400	301,400	15.3	1,257,100	291,300	23.2	4,784,000	702,000	14.7
1980	1,477,000	107,400	7.3	1,915,250	265,000	13.8	1,264,750	245,700	19.4	4,657,000	618,000	13.3
1975*	1,480,700	86,200	5.8	1,623,800	183,600	11.3	1,097,300	225,500	20.5	4,201,800	495,300	11.8
1970	1,410,500	67,100	4.8	1,334,300	124,400	9.3	947,300	170,400	18.0	3,692,100	361,900	9.8
1965	1,392,200	52,300	3.8	1,152,500	82,300	7.1	852,000	124,200	14.6	3,396,700	258,800	7.6
1960	1,266,700	56,000	4.4	1,003,800	54,200	5.4	733,500	75,600	10.3	3,004,000	185,800	6.2
1955	979,500	30,400	3.1	881,900	28,000	3.2	648,800	43,500	6.7	2,510,200	101,900	4.1
1950	885,900	18,600	2.1	739,900	17,800	2.4	574,000	30,800	5.4	2,199,800	67,200	3.1
% change												
91-2002	-48.8	-16.4		-14.4	34.2		-28.0	22.6		-28.6	20.8	
91-2000	-52.7	-41.4		-9.9	30.1		-25.2	20.1		-27.1	13.6	
1950-90	71.7	659.4		175.9	2221.3		136.7	931.0		124.9	1201.5	

* 1950-1975 without Semi-State

Table 6.2: Part-Time Employment (%) by Policy Area, 1986-2002

Policy Areas	General Administration		Foreign Service ¹⁾		Defense Civil & Military ²⁾		Police		Legal Services		Education		Social Service		Health Service		Housing	
	Year	Total	%	Total	%	Total	%	Total	%	Total	%	Total	%	Total	%	Total	%	
2002	627,700	22.0	6,500	8.4	311,800	5.9	439,800	10.2	192,700	16.1	1,296,800	38.6	317,900	42.7	373,800	32.4	154,200	19.6
2001	629,800	23.0	6,100	8.3	314,200	5.2	436,800	9.8	192,400	15.1	1,325,000	37.4	315,700	41.6	391,300	31.3	160,900	19.3
2000	644,363	21.6	6,044	7.7	320,465	4.9	437,850	8.6	193,974	14.3	1,554,676	38.0	196,458	29.4	414,837	29.6	167,803	18.5
1999	658,332	20.3	6,114	7.0	326,558	4.0	440,168	8.0	195,195	13.8	1,598,707	36.6	196,623	28.2	430,248	28.7	170,056	17.2
1998	667,068	19.0	6,145	6.0	328,535	3.6	442,570	7.3	196,802	13.2	1,632,797	35.3	203,944	26.4	459,378	27.0	178,757	15.5
1997	676,591	17.5	6,239	4.2	335,475	3.5	446,854	6.6	196,503	12.7	1,660,289	34.2	214,722	24.6	481,889	25.0	187,607	12.6
1996	694,516	16.3	6,253	4.1	339,808	3.4	450,140	6.5	196,492	12.3	1,676,362	34.1	225,083	22.8	511,031	24.0	202,909	12.4
1995	707,150	15.4	6,284	3.5	349,883	3.2	449,712	6.3	197,230	11.2	1,668,217	33.8	259,289	22.9	550,824	23.8	211,786	14.0
1994	725,274	14.8	6,265	3.6	378,095	2.9	446,396	6.1	195,812	11.0	1,690,620	33.0	262,148	21.6	598,937	24.0	221,366	14.1
1993	704,735	13.6	6,191	3.9	405,472	2.8	435,637	5.9	190,644	11.0	1,670,373	31.8	268,019	19.8	624,097	21.2	210,325	8.0
1992	711,117	13.4	6,050	5.5	432,864	2.7	424,444	5.8	186,100	11.4	1,748,229	27.7	273,608	19.1	660,574	19.8	226,802	7.6
1991	725,760	13.1	5,728	3.8	462,721	2.5	421,704	5.7	181,189	11.3	1,740,807	27.2	295,834	18.1	682,639	19.0	216,629	7.6
1990 ³⁾	324,937	11.3			420,647	2.7	254,799	4.3	164,364	11.7	991,583	29.8	63,803	19.0	88,853	21.9	31,305	8.7
1986	558,196	13.2			429,606	2.2	318,464	5.6	155,413	11.0	1,219,148	32.3	165,360	19.6	346,398	23.9	175,470	9.1

Policy Areas	Agriculture		Energy/ Water		Transportation		Public Enterprises		Railways		Post& Telecom.		Semi-State		Local special purpose ass.		Un-accounted ⁴⁾	Total
	Year	Total	%	Total	%	Total	%	Total	%	Total	%	Total	%	Total	%			
2002	27,800	23.1	19,800	28.9	86,700	11.1	69,500	16.7	62,100	6.1			588,000	25.6	71,000	28.8	163,000	4,809,100
2001	28,200	21.2	20,800	25.3	92,800	10.8	75,000	14.8	66,400	4.5			545,100	23.4	67,400	28.2	153,200	4,821,100
2000	31,191	19.0	22,935	24.2	98,903	10.1	75,415	14.2	73,619	3.5	--	--	487,988	22.0	69,788	27.1	112,574	4,908,883
1999	29,739	18.6	22,772	23.8	100,620	8.2	82,648	12.7	78,432	3.1	--	--	457,311	19.5	72,387	26.2	71,156	4,969,384
1998	29,924	17.1	23,431	21.8	103,261	5.9	94,586	10.9	91,710	2.4	--	--	449,349	16.6	67,737	25.3	71,807	5,068,649
1997	30,158	15.3	23,002	16.0	107,545	5.3	100,654	9.9	101,555	2.1	--	--	450,495	15.8	68,166	24.6	71,391	5,163,767
1996	31,893	15.1	25,783	16.2	112,580	5.2	104,534	9.8	111,585	1.8	--	--	462,564	14.2	67,772	24.1	57,158	5,276,463
1995	33,243	16.6	26,885	17.8	117,223	6.5	114,928	9.5	119,838	1.4	--	--	449,864	13.2	65,901	24.1	42,732	5,370,989
1994	35,018	15.3	29,452	18.0	120,177	6.9	123,274	9.9	128,500	1.2	605,013	19.2	428,018	11.2	66,950	23.5	33,029	6,094,344
1993	37,556	10.9	28,270	11.8	121,393	4.1	175,736	6.9	417,675	2.5	636,769	19.7	387,880	11.7	62,667	24.2	109,207	6,502,646
1992	40,193	10.3	28,033	10.6	128,788	3.5	187,011	6.3	433,944	2.5	641,544	18.8	352,192	11.6	58,323	25.7	117,414	6,657,230
1991	37,472	12.8	33,310	9.0	125,357	4.0	182,681	6.5	473,827	2.5	663,499	19.8	325,135	11.5	55,518	25.4	107,955	6,737,765
1990 ³⁾	24,142	13.2	15,465	9.3	63,170	5.0	68,169	6.9	249,788	1.3	537,225	18.2	264,144	12.9	53,097	25.1		4,919,000
1986	28,406	11.9	23,757	9.7	106,215	4.4	145,220	7.5	288,086	1.0	529,217	16.8	251,383	11.7	48,752	25.3	83,909	4,874,000

¹⁾ before 1991 included in general administration ²⁾ without conscripts

³⁾ data on local government by policy area and part-time not made available by the StBA for these years. Before 1986: data for part-time by policy area not contained in official statistics

⁴⁾ own calculation

Table 6.3: Part-Time Employment by Status Group, 1950-2002*

Year	Civil Servants			Employees			Laborers			Total		
	Total	part-time		Total	part-time		Total	part-time		Total	part-time	
		abs.	%		abs.	%		abs.	%		abs.	%
2002	1,797,300	312,300	17.4	1,853,200	652,400	35.2	570,500	172,800	30.3	4,221,136	1,113,400	26.4
2001	1,793,000	289,200	16.1	1,886,000	639,800	33.9	596,900	179,900	30.1	4,276,100	1,109,000	25.9
2000	1,818,600	274,600	15.1	1,965,500	640,300	32.6	636,600	189,700	29.8	4,420,900	1,104,600	25.0
1999	1,831,300	257,700	14.1	2,014,500	627,500	31.1	666,000	189,700	28.5	4,512,100	1,074,900	23.8
1998	1,845,000	241,800	13.1	2,075,600	608,100	29.3	698,700	191,300	27.4	4,619,300	1,041,200	22.5
1997	1,859,500	226,800	12.2	2,122,000	592,900	27.9	731,600	187,900	25.7	4,713,300	1,007,700	21.4
1996	1,853,200	210,500	11.4	2,176,800	591,600	27.2	783,900	201,300	25.7	4,813,900	1,003,400	20.8
1995	1,848,200	197,200	10.7	2,235,700	584,500	26.1	837,200	226,800	27.1	4,921,100	1,008,500	20.5
1994	2,141,600	203,000	9.5	2,402,300	600,800	25.1	1,122,500	322,700	28.7	5,666,400	1,126,500	19.9
1993	2,134,300	195,300	9.1	2,595,200	584,400	22.2	1,385,300	308,500	22.3	6,114,800	1,088,200	17.8
1992	2,112,500	191,000	9.0	2,701,600	528,900	19.6	1,490,900	317,600	21.3	6,305,000	1,037,500	16.5
1991	2,069,000	182,300	8.8	2,738,400	510,600	18.6	1,605,300	336,400	21.0	6,412,700	1,029,300	16.0
1990	2,054,900	179,100	8.7	1,575,300	400,300	25.4	1,026,100	258,900	25.2	4,656,300	838,300	18.0
1989	2,052,600	174,400	8.5	1,534,400	381,200	24.8	1,019,800	256,000	25.1	4,606,800	811,600	17.6
1988	2,063,700	166,300	8.0	1,524,300	366,900	24.1	1,032,600	253,000	24.5	4,620,600	786,200	17.0
1987	2,067,000	157,100	7.6	1,512,000	352,500	23.3	1,051,100	257,100	24.5	4,630,100	766,700	16.6
1986	2,060,200	146,800	7.1	1,505,900	358,200	23.8	1,056,100	263,500	25.0	4,622,200	768,500	16.6
1985	2,062,600	135,900	6.5	1,475,400	338,000	22.9	1,060,800	268,000	25.3	4,598,800	741,900	15.5
1984	2,057,200	119,500	5.4	1,447,300	321,200	22.2	1,053,700	264,800	25.1	4,558,200	705,500	14.8
1983	2,055,800	110,900	5.4	1,431,800	304,300	21.3	1,055,700	260,700	24.7	4,543,300	675,900	14.2
1980	1,972,200	62,600	3.1	1,401,900	276,300	19.7	1,056,100	256,100	24.3	4,635,000	595,000	12.8
1975	1,843,400	30,500	1.7	1,278,100	214,100	16.7	1,080,000	250,700	23.2	4,395,700	495,300	11.3
1970	1,642,200	8,000	0.5	1,041,100	140,900	13.5	1,009,300	213,000	21.1	3,851,300	361,900	9.4
1965	1,506,400	2,200	0.1	871,700	81,900	9.4	1,018,800	174,700	17.1	3,491,900	258,800	7.4
1960	1,321,400	--		698,000	43,600	6.2	984,700	142,200	14.4	3,004,000	185,800	6.2
1955	1,052,200	--		563,600	20,400	3.6	894,400	81,500	9.1	2,510,200	101,900	4.1
1950	788,400	--		547,900	12,100	2.2	863,600	55,100	6.4	2,199,800	67,200	3.1

* Core public administration

Table 6.4: Part-Time I and II Employment in Core Public Service ¹⁾, 1950-2002

Year	Total Public Employment	Part-time				
				Part-time I ²⁾		Part-time II ³⁾
		n	%	n	%	n
2002	4,035,900	1,137,600	28.2	994,900	87.5	142,700
2001	4,091,500	1,109,000	27.0	974,300	87.9	134,700
2000	4,234,300	1,104,600	26.1	969,700	87.8	134,900
1999	4,322,300	1,074,900	24.9	933,100	86.8	141,800
1998	4,427,900	1,041,200	23.5	905,600	87.0	135,700
1997	4,521,500	1,007,700	22.3	870,200	86.4	137,500
1996	4,622,900	1,003,400	21.7	857,600	85.5	145,800
1995	4,726,800	1,008,500	21.3	864,000	85.7	144,500
1994	5,453,650	1,126,500	20.7	955,900	84.9	170,600
1993	5,883,900	1,088,200	18.5	907,800	83.4	180,400
1992	6,059,200	1,047,500	17.3	851,600	81.3	185,900
1991	6,155,400	1,029,200	16.7	839,300	81.5	189,900
1990	4,412,300	838,500	19.0	668,100	79.7	170,400
1989	4,359,750	811,500	18.6	644,400	79.4	167,100
1988	4,370,550	786,300	18.0	627,300	79.8	159,000
1987	4,379,100	766,500	17.5	610,600	79.7	155,900
1986	4,373,200	769,000	17.6	590,000	76.7	179,000
1985	4,349,000	742,000	17.1	562,000	75.7	180,000
1980	4,193,000	595,000	14.2	435,000	73.1	160,000
1975	3,966,000	495,000	12.5	336,000	67.9	159,000
1970	3,461,000	362,000	10.5	252,000	69.6	110,000
1965	3,189,000	259,000	8.1	184,000	71.0	75,000
1960	2,854,000	186,000	6.5	136,000	73.1	50,000
1950	2,200,000	67,000	3.0	46,000	68.7	21,000
<i>% change</i>						
<i>91-2002</i>	<i>-34.4</i>	<i>10.5</i>		<i>18.5</i>		<i>-24.9</i>
<i>91-2000</i>	<i>-28.0</i>	<i>-7.3</i>		<i>15.5</i>		<i>-29.0</i>
<i>1950-1990</i>	<i>100.5</i>	<i>1151.1</i>		<i>1352.4</i>		<i>711.4</i>

¹⁾ without military

²⁾ more than half of the regular working hours

³⁾ less than half of the regular working hours

Table 7.1: Female Employment by Level of Government, 1960-2002¹⁾

Year	Total Employment			Federal Level			Länder			Local Level		
	Total	women		Total	women		Total	women		Total	women	
		n	%		n	%		n	%		n	%
2002	4,035,900	2,107,800	52,2	305,100	103,100	33.8	2,156,000	1,101,500	51.1	1,512,700	897,600	59.3
2001	4,091,500	2,123,000	51.9	309,200	103,100	33.3	2,178,900	1,107,000	50.8	1,537,100	906,600	59.0
2000	4,234,300	2,191,400	51.8	315,500	104,200	33.0	2,273,300	1,159,500	51.0	1,572,000	920,900	58.6
1999	4,322,300	2,229,000	51.6	320,500	105,000	32.8	2,313,700	1,173,900	50.8	1,609,700	943,800	58.6
1998	4,427,900	2,276,700	51.4	324,500	105,700	32.6	2,363,100	1,197,300	50.7	1,648,500	965,800	58.6
1997	4,521,500	2,314,200	51.2	334,700	107,300	32.1	2,401,900	1,211,300	50.4	1,683,300	987,400	58.7
1996	4,622,900	2,362,500	51.1	453,400	116,800	25.8	2,429,900	1,220,500	50.2	1,739,300	1,025,200	58.9
1995	4,726,800	2,408,600	51.0	471,800	117,900	25.0	2,453,400	1,228,300	50.1	1,801,500	1,062,400	59.0
1994	5,453,700	2,722,900	49.9	1,098,400	373,500	34.0	2,482,000	1,238,700	49.9	1,873,300	1,109,800	59.2
1993	5,883,900	2,852,200	48.5	1,426,400	459,300	32.2	2,510,700	1,227,700	48.9	1,946,800	1,165,200	59.9
1992	6,059,200	2,935,900	48.5	1,454,400	462,300	31.8	2,531,300	1,227,400	48.5	2,073,500	1,246,200	60.1
1991	6,155,400	2,954,700	48.0	1,532,000	483,900	31.6	2,572,000	1,243,900	48.4	2,051,400	1,226,900	59.8
1990	4,412,300	1,866,200	42.3	1,119,300	306,200	27.3	1,935,000	846,400	43.7	1,358,000	713,600	52.5
1986	4,373,100	1,756,200	40.2	1,147,900	285,300	24.9	1,921,700	809,700	42.1	1,303,500	661,200	50.7
1983 ²⁾	4,129,900	1,576,600	38.2	1,157,900	260,400	22.5	1,820,600	759,600	42.0	1,151,400	556,600	48.3
1980	4,033,700	1,506,300	37.3	1,152,900	245,100	21.3	1,760,000	723,900	41.1	1,120,800	537,300	47.9
1977	3,810,400	1,364,400	35.8	1,161,900	231,000	19.9	1,620,500	653,400	40.3	1,028,000	480,000	46.7
1974	3,763,700	1,320,500	35.1	1,239,300	246,900	19.9	1,531,800	610,000	39.8	992,600	463,600	46.7
1972	3,603,800	1,200,800	33.3	1,231,600	241,300	19.6	1,419,600	544,500	38.4	954,600	415,000	43.5
1969	3,234,100	999,300	30.9	1,130,800	207,800	18.4	1,240,400	449,300	36.2	862,900	342,200	39.7
1966	3,156,300	921,900	29.2	1,163,800	210,800	18.1	1,152,400	393,000	34.1	840,100	318,100	37.9
1963	3,000,000	823,100	27.4	1,163,300	202,200	17.4	1,067,000	348,600	32.7	769,700	272,300	35.4
1960	2,824,500	731,900	25.9	1,109,600	186,800	16.8	995,600	306,800	30.8	719,300	237,400	33.0
% change												
91-2002	-34.4	-28.6		-80.1	-78.7		-16.2	-11.4		-26.3	-26.8	
91-2000	-31.2	-25.8		-79.4	-78.5		-11.6	-6.8		-23.4	-24.9	
1960-1990	56.2	155.0		0.9	63.9		94.4	175.9		88.8	200.6	

¹⁾ Core public administration, without military personnel

²⁾ 1960-1983 without part-time personnel with less than half of the regular working-time

Table 7.2: Female Employment (%) by Policy Area, 1986-2002

Policy Areas	General Administration		Foreign Service ¹⁾		Defense Civil & Military ²⁾		Police		Legal Services		Education		Social Service		Health Service		Housing	
	Total	%	Total	%	Total	%	Total	%	Total	%	Total	%	Total	%	Total	%	Total	%
2002	627,700	53.8	6,500	46.1	311,700	16.6	438,000	27.3	192,500	52.0	1,296,800	61.0	317,900	80.4	373,800	66.9	154,200	26.9
2001	629,800	53.5	6,100	45.8	314,200	16.0	436,700	26.8	192,400	51.4	1,328,000	60.6	315,700	80.0	391,300	66.9	160,900	27.0
2000	644,363	52.8	6,044	45.6	320,465	15.8	437,850	26.4	193,974	51.1	1,554,676	63.1	196,458	68.2	414,837	67.4	167,803	26.9
1999	658,332	52.4	6,114	45.6	326,558	15.8	440,168	26.0	195,195	50.9	1,598,707	62.9	196,623	68.2	430,248	67.3	170,056	26.7
1998	667,068	52.4	6,145	45.3	328,535	15.4	442,570	25.6	196,802	50.8	1,632,797	62.7	203,944	68.2	459,378	67.9	178,757	26.8
1997	676,591	52.0	6,239	45.0	335,475	15.3	446,854	25.3	196,503	50.5	1,676,362	61.9	214,722	68.6	481,889	67.9	187,607	26.1
1996	694,516	51.8	6,253	44.2	339,808	15.2	450,140	25.1	196,492	50.2	1,676,362	62.6	225,083	69.7	511,031	67.7	202,909	26.9
1995	707,150	51.5	6,284	43.0	349,883	15.0	449,712	24.8	197,230	50.1	1,668,217	62.3	259,289	71.7	550,824	67.8	211,786	26.8
1994	725,274	51.2	6,265	42.5	378,095	14.4	446,396	24.2	195,812	49.7	1,690,620	65.4	262,148	71.4	598,937	68.4	221,366	25.8
1993	704,735	50.3	6,191	41.7	405,472	13.8	435,637	23.2	190,644	49.0	1,670,373	61.8	268,019	72.3	624,097	69.5	210,325	23.1
1992	711,117	49.9	6,050	41.1	432,864	13.8	424,444	22.6	186,100	47.9	1,748,229	62.4	273,608	72.1	660,574	69.3	226,802	22.6
1991	725,760	49.8	5,728	40.5	462,721	13.9	421,704	21.5	181,189	46.1	1,740,807	61.2	295,834	73.6	682,639	69.6	216,629	20.5
1990 ³⁾	324,937	40.0			420,647	12.1	254,799	14.8	164,364	44.7	991,583	51.5	63,803	61.4	88,853	63.0	31,305	22.8
1986	558,196	42.0			429,606	11.7	318,464	17.4	155,413	42.7	1,219,148	54.2	165,360	64.4	346,398	80.3	175,470	15.5

Policy Areas	Agriculture		Energy/ Water		Transportation		Public Enterprises		Railways		Post & Telecom.		Semi-State		Local special purpose ass.		Un-accounted ⁴⁾	Total
	Total	%	Total	%	Total	%	Total	%	Total	%	Total	%	Total	%	Total	%		
2002	27,800	44.1	19,800	45.4	86,700	17.7	69,500	24.8	62,100	9.1	--	--	588,000	61.6	71,000	50.3	165,100	4,809,100
2001	28,200	42.8	20,800	42.7	92,800	17.3	75,000	24.0	66,360	9.6	--	--	545,100	61.6	67,400	49.1	150,300	4,821,100
2000	31,191	41.4	22,935	41.4	98,903	16.6	75,415	23.2	73,619	9.3	--	--	487,988	61.1	69,788	50.0	112,574	4,908,883
1999	29,739	42.6	22,772	41.9	100,620	16.2	82,648	22.7	78,432	8.1	--	--	457,311	59.9	72,387	51.1	71,156	4,969,384
1998	29,924	42.4	23,431	41.0	103,261	16.2	94,586	21.5	91,710	8.7	--	--	449,349	59.4	67,737	50.6	71,807	5,068,649
1997	30,158	41.2	23,002	40.0	107,545	16.0	100,654	21.6	101,555	8.1	--	--	450,495	59.1	68,166	50.9	71,391	5,163,767
1996	31,893	41.5	25,783	40.0	112,580	16.3	104,534	21.9	111,585	7.6	--	--	462,564	59.3	67,772	50.8	57,158	5,276,463
1995	33,243	40.9	26,885	40.1	117,223	16.3	114,928	12.1	119,838	6.2	--	--	449,864	59.1	65,901	50.9	42,732	5,370,989
1994	35,018	40.8	29,452	38.8	120,177	16.4	123,274	21.4	128,500	5.7	605,013	41.6	428,018	58.1	66,950	52.1	33,029	6,094,344
1993	37,556	37.2	28,270	37.3	121,393	14.8	175,736	21.3	417,675	18.6	636,769	42.1	387,880	62.1	62,667	52.2	109,207	6,502,646
1992	40,193	35.0	28,033	35.7	128,788	14.8	187,011	20.4	433,944	18.3	641,544	41.7	352,192	63.4	58,323	54.4	117,414	6,657,230
1991	37,472	38.8	33,310	31.3	125,357	14.0	182,681	21.7	473,827	18.1	663,499	42.4	325,135	61.5	55,518	53.9	107,955	6,737,765
1990 ³⁾	24,142	32.3	15,465	26.8	63,170	14.6	68,169	18.9	249,788	6.7	537,225	36.7	264,144	56.7	53,097	53.7		4,919,000
1986	28,406	29.1	23,757	28.6	106,215	9.4	145,220	17.7	288,086	6.2	529,217	34.4	251,383	55.4	48,752	52.2	83,909	4,874,000

¹⁾ before 1991 included in general administration

²⁾ without conscripts

⁴⁾ data on local government by policy area and part-time not made available by the StBA for these years. Before 1986: data for female employment by policy area not contained in official statistics

⁴⁾ own calculation

Table 7.3: Female Employment by Status Group, 1960-2002*

Year	Total Employment			Civil Servants			Employees			Laborers		
	Total	women		Total	women		Total	women		Total	women	
		n	%		n	%		n	%		n	%
2002	4,035,900	2,107,800	52.2	1,612,000	641,300	39.8	1,859,200	1,265,200	68.1	570,500	201,200	35.3
2001	4,091,500	2,123,000	51.9	1,608,500	624,200	38.8	1,886,000	1,287,400	68.3	596,900	211,300	35.4
2000	4,234,300	2,191,400	51.8	1,632,100	621,500	38.1	1,965,500	1,340,300	68.2	636,600	229,600	36.1
1999	4,322,300	2,229,000	51.6	1,641,600	610,600	37.2	2,014,500	1,373,500	68.2	666,000	244,700	36.7
1998	4,427,900	2,276,700	51.4	1,653,400	601,100	36.4	2,075,600	1,414,800	68.2	698,700	260,800	37.3
1997	4,521,500	2,276,700	51.2	1,667,800	592,700	35.5	2,122,000	1,445,400	68.1	731,600	276,100	37.7
1996	4,622,900	2,362,500	51.1	1,662,200	573,800	34.5	2,176,800	1,482,900	68.1	783,900	305,800	39.0
1995	4,726,800	2,408,600	51.0	1,653,900	553,500	33.5	2,235,700	1,522,100	68.1	837,200	333,000	39.8
1994	5,453,800	2,721,900	49.9	1,929,000	607,700	31.5	2,402,300	1,644,400	68.5	1,122,500	469,800	41.9
1993	5,883,900	2,852,200	48.5	1,903,400	578,200	30.4	2,595,200	1,747,500	67.3	1,385,300	526,500	38.1
1992	6,059,200	2,935,800	48.5	1,866,700	552,400	29.6	2,701,600	1,811,300	67.0	1,490,900	572,100	38.4
1991	6,155,300	2,954,700	48.0	1,811,600	523,000	28.9	2,738,400	1,810,100	66.1	1,605,300	621,600	38.7
1990	4,412,300	1,866,200	42.3	1,810,900	512,400	28.3	1,575,300	987,600	62.7	1,026,100	366,200	35.7
1986	4,373,100	1,756,200	40.2	1,811,100	472,900	26.1	1,505,900	913,700	60.7	1,056,100	369,600	35.0
1983	4,129,900	1,576,300	38.2	1,642,400	451,700	27.5	1,431,800	819,500	57.2	1,055,700	305,100	28.9
1980	4,033,700	1,506,600	37.4	1,575,700	401,300	25.5	1,401,900	796,700	56.8	1,056,100	308,600	29.2
1977	3,810,400	1,364,100	35.8	1,668,500	360,600	21.6	1,204,700	707,100	58.7	937,200	296,400	31.6
1974	3,763,700	1,309,600	34.8	1,560,200	303,500	19.5	1,191,200	691,300	58.0	1,012,300	314,800	31.1
1972	3,605,900	1,200,900	33.3	1,500,400	274,900	18.3	1,108,400	623,300	56.2	997,100	302,700	30.4
1969	3,234,100	998,800	30.9	1,382,300	224,600	16.2	934,200	501,600	53.7	917,600	272,600	29.7
1966	3,156,300	922,100	29.2	1,321,500	188,500	14.3	872,600	456,400	52.3	962,200	277,200	28.8
1963	3,000,000	823,100	27.4	1,248,800	165,300	13.2	773,400	395,700	51.2	977,800	262,100	26.8
1960	2,824,500	731,800	25.9	1,141,800	143,900	12.6	698,000	331,100	47.4	984,700	256,800	26.4
<i>% change</i>												
91-2002	-34.4	-28.7		-11.0	22.6		-32.1	-30.1		-64.5	-67.6	
91-2000	-31.2	-25.8		-9.9	18.8		-28.2	-26.0		-60.3	-63.1	
1960-1990	56.2	155.0		58.7	256.1		125.7	198.3		4.2	42.6	

* Core public administration, without military personnel

Table 7.4: Female Part-Time Employment by Status Group, 1960-2002¹⁾

Year	Total Part-Time Employment			Civil Servants			Employees			Laborers		
	Total	women		Total	women		Total	women		Total	women	
		n	%		n	%		n	%		n	%
2002	1,137,600	947,500	83.3	312,300	252,900	81.0	652,400	553,200	84.8	172,800	141,300	81.8
2001	1,109,000	928,100	83.7	289,200	239,000	82.6	639,800	542,900	84.9	179,900	146,100	81.2
2000	1,104,600	931,500	84.3	274,600	233,800	85.1	640,300	542,500	84.7	189,700	155,200	81.8
1999	1,053,500	900,000	85.4	255,200	221,400	86.8	615,000	523,200	85.1	183,300	155,400	84.8
1998	1,041,200	904,200	86.8	241,800	211,500	87.5	608,100	524,000	86.2	191,300	168,700	88.2
1997	1,007,700	881,700	87.5	226,800	200,500	88.4	592,900	510,800	86.2	187,900	170,500	90.8
1996	1,003,400	878,700	87.6	210,500	190,500	90.5	591,600	505,800	85.5	201,300	182,400	90.6
1995	1,008,500	880,600	87.3	197,200	179,100	90.8	584,500	499,600	85.5	226,800	202,000	89.1
1994	1,126,500	986,800	87.6	203,000	187,100	92.2	600,800	514,700	85.7	322,700	285,000	88.3
1993	1,088,200	960,900	88.3	195,300	180,300	92.3	584,400	496,700	85.0	308,500	283,900	92.0
1992	1,037,500	918,000	87.6	191,000	176,400	92.4	528,900	448,400	83.2	317,600	293,200	92.3
1991	1,029,300	909,200	88.3	182,300	168,100	92.2	510,600	431,200	84.5	336,400	309,900	92.1
1990	838,300	727,900	86.8	179,100	164,600	91.9	400,300	325,900	81.4	258,900	237,400	91.7
1986	768,500	651,500	84.7	146,800	133,800	91.1	358,200	276,900	77.3	263,500	240,800	91.3
1983 ²⁾	506,800	471,800	93.1	110,800	103,500	93.4	214,300	196,400	91.6	181,700	171,900	94.6
1980	435,700	407,400	93.5	62,700	60,600	96.6	197,200	179,600	91.1	175,800	167,200	95.1
1977	358,900	335,200	93.4	38,700	36,800	95.1	151,400	139,600	92.2	168,800	158,800	94.1
1974	333,100	307,200	92.2	25,200	24,400	96.8	136,500	122,500	89.7	171,400	160,300	93.5
1972	294,200	265,800	90.3	16,800	15,700	93.5	113,800	98,200	86.3	163,600	151,900	92.8
1969	222,300	196,100	88.2	3,700	2,400	64.9	73,200	60,500	82.6	145,400	133,200	91.6
1966	202,600	173,200	85.5	2,200	800	36.4	57,900	45,100	77.9	142,500	127,300	89.3
1963	159,700	136,700	85.6	700	300	42.9	33,200	25,000	75.3	125,800	111,400	88.6
1960	156,100	126,500	81.0	400	100	25.0	25,900	14,700	56.8	129,800	111,700	86.1
<i>% change</i>												
1991-2002	10.5	4.2		71.3	50.4		27.8	28.3		-48.6	-54.4	
1991-2000	7.3	-2.5		50.6	39.1		25.4	25.8		-43.6	-49.9	
1960-1990	437.3	475.4		44675	164500		14455	2117		99.5	112.5	

¹⁾ Core public administration²⁾ 1960-1983 without part-time employees and labourer with less than half of the regular working-time

Table 7.5: Female Employment by Career Group, 1960-2002¹⁾

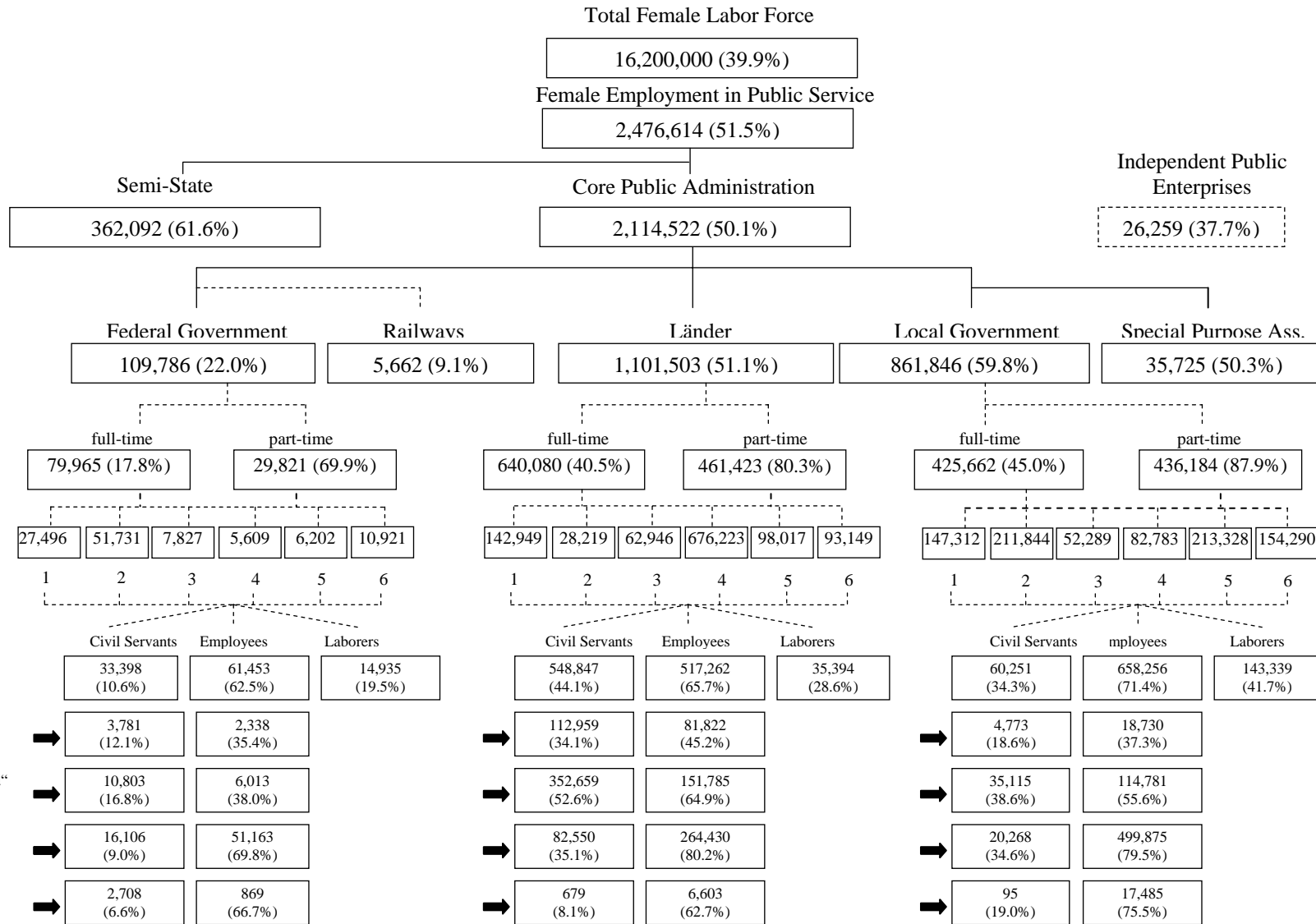
Year	Higher Service			„Elevated“ Service			Simple & Middle Service			Total		
	Total	women		Total	women		Total	women		Total	women	
		abs.	%		abs.	%		abs.	%		abs.	%
2002	618,000	225,300	36.5	1,278,800	676,200	52.9	1,520,800	983,600	64.7	3,417,600	1,885,100	55.2
2001	622,600	220,500	35.4	1,282,300	673,400	52.5	1,562,300	1,005,500	64.4	3,467,200	1,899,400	54.8
2000	637,800	221,000	34.7	1,291,700	673,600	52.1	1,637,800	1,053,100	64.3	3,567,300	1,947,700	54.6
1999	651,800	215,500	33.1	1,316,700	670,300	50.9	1,838,300	1,084,700	59.0	3,806,800	1,970,500	51.8
1998	653,900	209,100	32.0	1,327,900	676,600	51.0	1,899,300	1,114,500	58.7	3,881,100	2,000,200	51.5
1997	630,700	189,600	30.1	1,337,300	681,500	51.0	1,921,500	1,112,200	57.9	3,889,500	1,983,300	51.0
1996	622,600	184,200	29.6	1,332,800	677,500	50.8	1,975,900	1,139,000	57.7	3,931,400	2,000,700	50.9
1995	603,100	168,400	27.9	1,344,000	681,200	50.7	2,030,400	1,171,900	57.7	3,977,500	2,021,500	50.8
1994	610,700	165,900	27.2	1,391,000	686,600	49.4	2,439,500	1,339,700	54.9	4,441,200	2,192,200	49.4
1993	607,100	159,900	26.3	1,395,300	674,200	48.3	2,619,300	1,427,300	54.5	4,621,700	2,261,400	48.9
1992 ²⁾	606,600	159,300	26.3	1,337,300	629,600	47.1	2,673,500	1,430,900	53.5	4,617,400	2,219,800	48.1
1991 ²⁾	503,900	129,300	25.7	959,000	406,400	42.4	1,849,000	918,400	49.7	3,311,900	1,454,100	43.9
1990	494,800	124,100	25.1	949,300	397,600	41.9	1,841,500	925,200	50.2	3,285,600	1,446,900	44.0
1989	477,000	115,400	24.2	935,300	382,700	40.9	1,827,300	900,800	49.3	3,239,600	1,398,900	43.2
1988	474,800	113,600	23.9	932,800	377,200	40.4	1,838,100	896,800	48.8	3,245,700	1,387,600	42.8
1986	467,400	108,400	23.2	928,600	369,000	39.7	1,819,800	864,000	47.5	3,215,800	1,341,400	41.7
1983	466,300	105,200	22.6	910,500	355,300	39.0	1,776,700	810,900	45.6	3,153,500	1,271,400	40.3
1980	425,800	93,500	22.0	884,700	333,400	37.7	1,747,600	770,900	44.1	3,058,100	1,197,800	39.2
1977	377,100	73,300	19.4	823,600	296,700	36.0	1,673,000	697,700	41.7	2,873,700	1,067,700	37.2
1974	346,600	64,800	18.7	746,100	251,700	33.7	1,658,800	678,200	40.9	2,751,500	994,700	36.2
1972	343,400	53,200	15.5	698,600	227,500	32.6	1,597,300	617,400	38.7	2,639,300	898,100	34.0
1969	260,300	41,800	16.1	606,200	175,800	29.0	1,450,000	508,600	35.1	2,316,500	726,200	31.3
1966	224,900	33,700	15.0	561,300	143,600	25.6	1,407,800	467,600	33.2	2,194,000	644,900	29.4
1963	190,100	25,200	13.3	511,500	121,300	23.7	1,320,600	414,400	31.4	2,022,200	560,900	27.7
1960	161,400	19,600	12.1	471,400	102,200	21.7	1,219,300	353,100	29.0	1,852,100	474,900	25.6

¹⁾ core public administration, part-time personnel with more than half of the regular working-time

²⁾ West Germany only, 1960-1991 without military personnel

³⁾ without East German part-time personnel

Graph 7.6: Structure of Female Public Service Employment, 2002*



*total numbers (percent)

Row Sums:

Civil S...:	648,090	(36.1%)
Employees:	1,265,215	(68.3%)
Laborers:	201,217	(35.3%)
<hr/>		
Total:	2,114,522	(50.1%)

full-time:	1,154,707	(38.5%)
part-time:	927,428	(83.3%)

Policy Areas:**

1	317,757
3	123,062
4	764,615

Career Groups
(only civil servants and employees, total: 1,879,467)

224,403	(35.9%)
671,156	(52.4%)
934,392	(62.1%)
28,439	(33.5%)
Rest: 21,077	(44.9%)

- **Policy Areas:
- 1 General Administration
 - 2 Defense
 - 3 Police
 - 4 Education and Research
 - 5 Transport and Communication
 - 6 Rest

- 1 General Administration
- 2 Health and Recreation
- 3 Police
- 4 Education and Research
- 5 Justice
- 6 Rest

- 1 General Administration
- 2 Social Services
- 3 Police
- 4 Education
- 5 Health and Recreation
- 6 Rest

Table 8.1: Task areas by personnel and expenditures in Germany, 2000

Policy areas	Personnel		Gross expenditures		Personnel expenditures		
	n	%	Mio Euro	%	Mio Euro	%	% of gross expenditures
General Administration	644 363	13.1	34 063	3.5	23 730	13.0	69.7
Foreign Service	6 044	0.1	22 641	2.4	445	0.2	2.0
Defence	320 465	6.5	23 123	2.4	11 840	6.5	51.2
Police and Public Safety	437 850	8.9	19 860	2.1	14 653	8.1	73.8
Legal Services	193 974	4.0	10 108	1.1	6 310	3.5	62.4
Education and Research	1 554 676	31.7	98 569	10.3	52 316	28.8	53.1
Social Service/ Semi-State ¹⁾	684 446	13.9	512 942	53.4	17 743	9.8	3.5
Health Service	414 837	8.5	14 355	1.5	3 474	1.9	24.2
Housing	167 803	3.4	27 469	2.9	5 692	3.1	20.7
Agriculture	31 191	0.6	11 226	1.2	1 039	0.6	9.3
Energy/ Water	22 935	0.5	26 072	2.7	807	0.4	3.1
Transportation/ Railways	172 522	3.5	22 570	2.3	3 042	1.7	13.5
Public Enterprises	75 415	1.5	13 977	1.5	3 756	2.1	26.9
Un-accounted/ others ²⁾	182 362	3.7	123 813	12.9	37 014 ³⁾	20.4	29.9
Total	4 908 883	100.0	960 788	100.0	181 861	100.0	18.9

¹⁾ Personnel belonging predominantly to social insurance agencies.

²⁾ Including personnel of local special purpose associations, respective gross expenditures contained in other categories.

³⁾ Excluding local services.

Source: Statistisches Bundesamt Wiesbaden 2003. Finanzen und Steuern, Fachserie 14. Reihe 3.1, Rechnungsergebnisse des öffentlichen Gesamthaushalts 2000. Stuttgart: Metzler-Poeschel.

Table 8.2: Personnel Expenditure in Public Budgets, 1992-1999

		1992		1994		1996		1998**		1999	
		Expenditures*		Expenditures*		Expenditures*		Expenditures*		Expenditures***	
		Total	% Personnel	Total	% Personnel	Total	% Personnel	Total	% Personnel	Total	% Personnel
Federal Government		431,679	11.9	478,909	11.0	493,674	10.7	512,817	10.2	271,200	9.9
Länder	East	88,307	23.3	99,274	25.7	108,710	26.0	104,671	25.2	53,318	25.6
	West	357,276	41.7	378,566	41.9	393,726	42.4	374,095	41.2	199,861	40.2
	Total	445,583	38.1	477,840	38.5	502,436	38.9	478,766	37.7	246,457	38.1
Local Level	East	65,796	36.1	70,123	32.4	67,867	41.6	52,408	29.1	26,267	29.6
	West	261,627	30.5	278,092	30.5	265,860	30.9	226,314	26.7	117,485	26.7
	Total	327,423	31.6	348,215	30.5	333,727	31.4	278,722	27.2	143,752	27.3

* in Mio. DM

** since 1997 without hospitals and university hospitals with management accounting and without supplementary benefit fund by social insurance

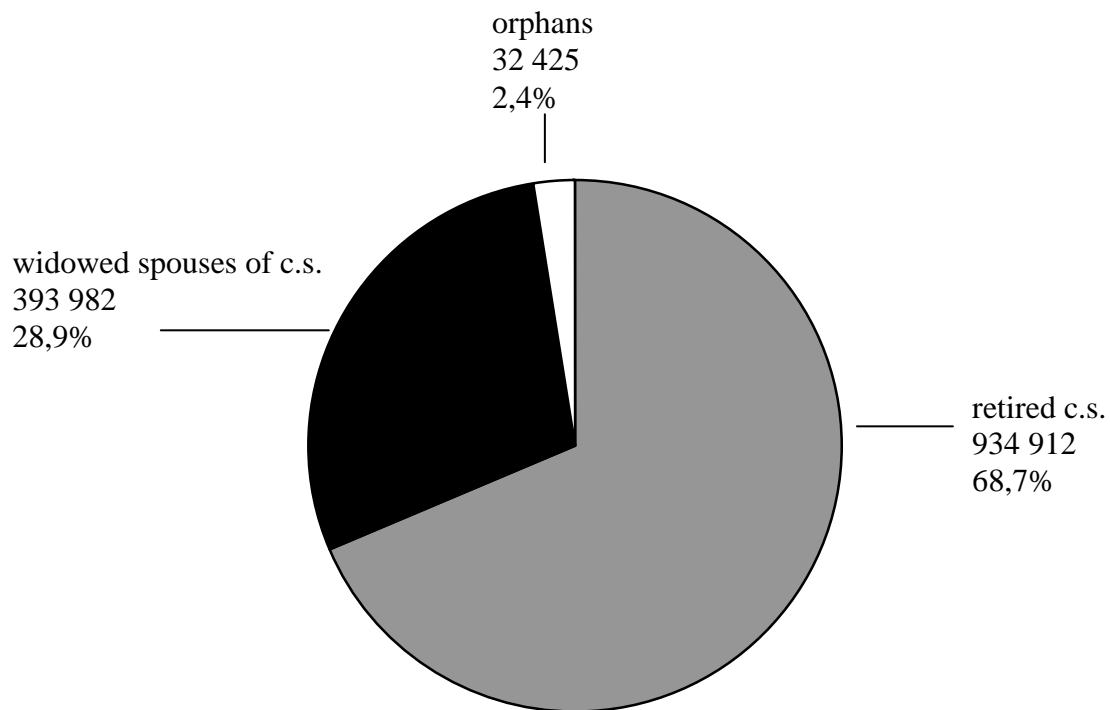
*** in Mio. Euro (1 Euro = 1,95583 DM; 1 DM \approx 0,5112919 Euro)

Table 8.3: Expenditures for Pensions, 1970-1999

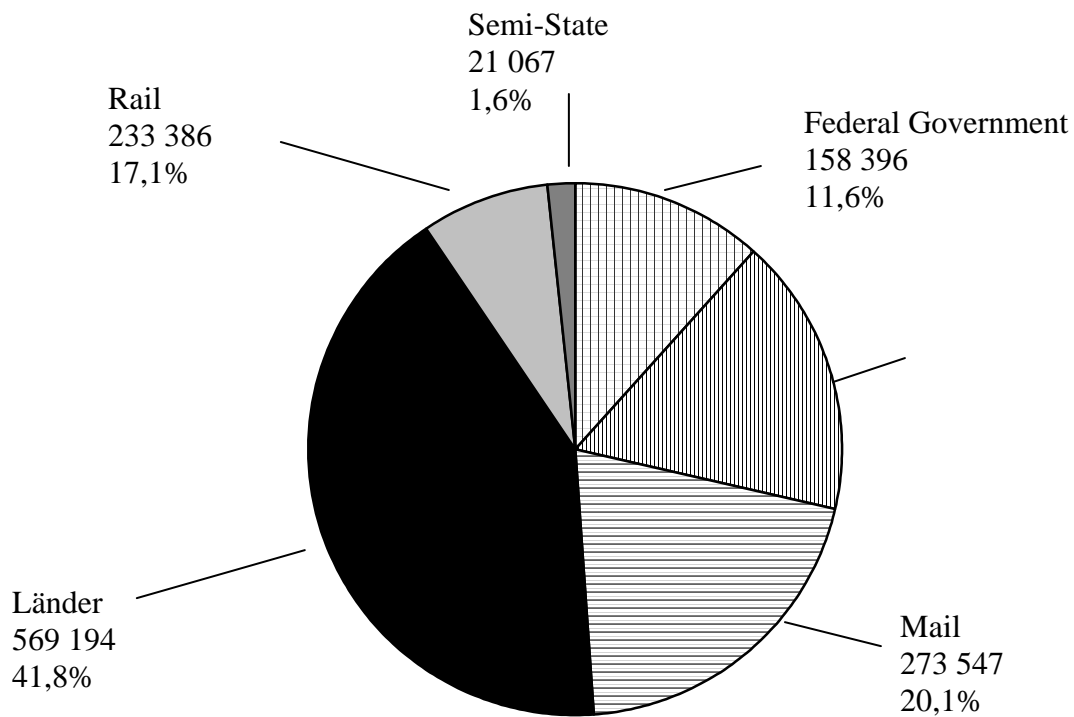
Year	Expenditures for Pensions								
	Core public administration				other categories				Total
	Federal Government	Länder	Local Level	Total	Semi-State	Rail	Mail	Total	
in Mrd. DM									
1970	3,11	4,51	1,11	8,73	0,10	2,01	2,00	4,11	12,84
1975	5,41	8,82	2,20	16,43	0,17	3,53	2,40	6,10	22,53
1980	6,54	12,12	2,79	21,45	0,23	4,96	3,09	8,28	29,73
1985	6,61	14,39	3,14	24,14	0,48	5,27	3,44	9,19	33,33
1990	7,15	17,65	3,85	28,65	0,61	5,99	4,38	10,98	39,63
1991	7,50	18,88	4,06	30,44	0,65	6,34	4,74	11,73	42,17
1992	8,03	20,30	4,05	32,38	0,69	6,70	5,27	12,66	45,04
1993	8,51	21,26	4,32	34,09	0,69	6,82	5,42	12,93	47,02
1994	8,54	21,87	4,32	34,73	0,75	6,89	5,89	13,53	48,26
1995	9,05	23,19	4,66	36,90	0,80	7,25	6,55	14,60	51,50
1996	9,11	24,13	4,79	38,03	0,82	7,44	7,20	15,46	53,49
1997	9,20	24,86	4,89	38,95	0,83	7,57	7,87	16,27	55,22
1998	9,36	25,87	4,98	40,21	0,88	7,80	8,43	17,11	57,32
1999	9,42	26,90	5,07	41,39	0,90	8,10	8,99	17,99	59,38

Source: BT-Drs. 14/7220, S. 126

Graph 8.4: Types of Pension Recipients, 2003



Graph 8.5: Pension Recipients by Level of Government, 2003



Appendix: definition of task areas

Table 3.2 General Administration, 1960-2002

"Politische Führung und zentrale Verwaltung", covers

at Federal Level

Politische Führung (Bundespräsident und Bundespräsidialamt, Bundestags- und Bundesratsverwaltung, Bundeskanzler und Bundeskanzleramt, Bundesministerien, Presse- und Informationsamt, Bundesrechnungshof und Prüfungsämter, Bundesbeauftragter für den Datenschutz, Beauftragter der Bundesregierung für Kultur und Medien, Wehrbeauftragter des Deutschen Bundestages)

Innere Verwaltung (Bundesverwaltungsamt, Bundesdisziplinargericht u. -anwalt, Bundesakademie für öffentliche Verwaltung, Oberprüfungsamt für die höheren technischen Verwaltungsbeamten, Bundesamt für Sicherheit in der Informationstechnik)

Statistischer Dienst (Statistisches Bundesamt)

Zivildienst (Bundesamt für den Zivildienst)

Steuer- und Finanzverwaltung (Oberfinanzdirektionen, Bundesamt für Finanzen, Bundesmonopolverwaltung für Branntwein, Bundesschuldenverwaltung, Bundesamt zur Regelung offener Vermögensfragen, Zollkriminalamt)

Hochbauverwaltung (Bundesbaudirektion)

Sonstiges (Monopolkommission, Sachverständigenrat für Wirtschaft)

at Länder Level

Politische Führung (Landtags- Bürgerschafts- u. Abgeordnetenhausverwaltungen, Ministerpräsidenten, Regierender Bürgermeister, Landesvertretungen und Senatsverwaltungen, Vertretungen der Länder beim Bund, Landesrechnungshöfe, Landesbeauftragte für den Datenschutz)

Innere Verwaltung (Landesverwaltungsämter, Disziplinarkammern, Zentrale Besoldungs- und Versorgungsstellen, Bezirksregierungen, Verwaltungsschulen, Verwaltungs- und Wirtschaftsakademien, Datenverarbeitungszentralen der inneren Verwaltung)

Statistischer Dienst (Statistische Landesämter)

Steuer- und Finanzverwaltung (Oberfinanzdirektionen, Finanzämter, Liegenschaftsämter Vermögensverwaltungen)

Hochbauverwaltung (Landesbaudirektionen, Finanzbauämter, Hochschul- und Universitätsbauämter)

at Local Level

Gemeindeorgane (OB, Bürgermeister, Landrat, Amtsvorsteher)

Rechnungsprüfung

Hauptverwaltung

Besondere Dienststellen (Standesamt, Statistisches Amt)

Einrichtungen für die gesamte Verwaltung (EDV, Hauptarchiv)

Einrichtungen für Verwaltungsangehörige (Betriebskrankenkassen, Kantinen)

Finanzverwaltung (Kämmerei und Stadtkassen, Vollziehungsamt, Liegenschaftsverwaltung)

Verteidigungslastenverwaltung

Bauverwaltung

Table 3.4 Police, Security and Public Order, 1960-2002

"Öffentliche Sicherheit und Ordnung", covers

at Federal Level

Bundesgrenzschutz

Polizei (Bundeskriminalamt)

Beschaffungsstelle des Bundesministeriums des Innern

at Länder Level

Polizei (Landeskriminalämter, Schutz-, Verkehrs-, Kriminal- und Wasserschutzpolizeien)

Öffentliche Ordnung (in Stadtstaaten: Ämter für Wirtschaftsförderung, Bauordnungs-, Bauaufsichts-, Bauprüfungsämter, Ordnungsämter, Einwohnermeldeämter)

Brandschutz (Landesämter für Brandschutz, Feuerwehrschoolen, Feuerwehren in Stadtstaaten)
Katastrophenschutz

at Local Level

Öffentliche Ordnung (Ordnungsamt, Einwohnermeldeamt, Ausländeramt, Seemannsamt)
Feuerschutz (Feuerwehren)
Katastrophenschutz
Rettungsdienst

Table 3.5. Justice and Penitentiary, 1960-2002

"Rechtsschutz", covers

at Federal Level

Bundesverfassungsgericht
Ordentliche Gerichte u. Staatsanwaltschaften (Bundesgerichtshof, Generalbundesanwalt beim BGH, Bundespatentgericht)
Verwaltungsgerichte (Bundesverwaltungsgericht, Oberbundesanwalt beim Bundesverwaltungsgericht)
Arbeits- und Sozialgerichte (Bundesarbeitsgericht, Bundessozialgericht)
Finanzgerichte (Bundesfinanzhof)

at Länder Level:

Landesverfassungsgerichte
Ordentliche Gerichte u. Staatsanwaltschaften (Oberlandes-, Kammer-, Landes-, Amts- und Gewerbe-gerichte)
Verwaltungsgerichte (Oberverwaltungsgerichte, Verwaltungsgerichte, Seeämter, Landesanwaltschaften)
Arbeits- und Sozialgerichte (Landesarbeitsgerichte, Arbeitsgerichte, Landessozialgerichte, Sozialgerichte)
Finanzgerichte
Justizvollzugsverwaltung

3.6 Education and Research, 1960-2002

"Bildung, Wissenschaft, Forschung", covers

at Federal Level

Verwaltungsfachhochschulen
Wissenschaft u. Forschung außerhalb der Hochschulen (Bundesarchiv, Bundesgesundheitsamt, Bundesbeauftragter für die Unterlagen des Staatssicherheitsdienstes der ehemaligen DDR, Fischereischiffe, Forschungsanstalten und -institute des Bundes)
Sonstiges (Bundeszentrale für politische Bildung)

at Länder Level

Unterrichtsverwaltung (Schulämter, Oberschulämter, Prüfungsämter)
Grund-, Haupt- und Sonderschulen, Realschulen, Gymnasien, Gesamtschulen, Kindergärten, Berufliche Schulen, Fachschulen,
Universitäten, Technische Hochschulen, Technische Universitäten, Pädagogische Hochschulen, Gesamthochschulen, Fachhochschulen, Verwaltungsfachhochschulen, Musikhochschulen, Kunstakademien
Hochschulkliniken
Wissenschaft u. Forschung außerhalb der Hochschulen (Staats- und Landesarchive, wissenschaftliche Museen, Forschungsanstalten der Länder)
Sonstiges (Volkshochschulen, Landeszentralen für politische Bildung, öffentliche Bibliotheken)

at Local Level

Kommunale Schulverwaltungen
Grund-, Haupt- und Sonderschulen, Realschulen, Gymnasien, Berufliche Schulen, Fachschulen u. Fachoberschulen
Tageseinrichtungen für Kinder (bis 2000, seither unter Soziale Sicherung verzeichnet)
Schülerbeförderung
Volksbildung (Erwachsenenbildung, öffentliche Büchereien, Freizeitheime)

Wissenschaft u. Forschung (wiss. Bibliotheken, wiss. Museen u. Sammlungen)
 Verwaltung kultureller Angelegenheiten
 Ausstellungen, Theater, Konzerte
 Heimatpflege

3.7 Social Services, 1960-2002

"Soziale Sicherung, Kriegsfolgeausgaben, Wiedergutmachung", covers

at Federal Level

Versicherungsbehörden (Bundesversicherungsamt, Bundesausführungsbehörde für Unfallversicherung)
 Lastenausgleichsverwaltung (Bundesausgleichsamt)
 Sonstige (Bundesamt für die Anerkennung ausländischer Flüchtlinge, Bundesaufnahmestellen, Bundesprüfstelle für jugendgefährdende Schriften)
 Arbeitsschutz (Bundesanstalten für Arbeitsschutz u. Arbeitsmedizin)

at Länder Level

Versicherungsbehörden (Landesversicherungsämter)
 Wohlfahrt, Sozialhilfe (Landessozialämter, Landeswohlfahrtsverbände)
 Landesjugendämter
 Landesversorgungsämter
 Lastenausgleichsverwaltung (Lastenausgleichsämter)
 Landesämter für Wiedergutmachung
 Einrichtungen der Sozialhilfe (Alten-, Pflege- und Obdachlosenheime, Behinderteneinrichtungen)
 Einrichtungen der Jugendhilfe (Erziehungsheime, Jugendheime)
 Krankenhäuser u. Kuranstalten der Kriegsopferversorgung
 Arbeitsschutz (Gewerbeaufsichtsämter, Landesinstitute für Arbeitsschutz)

at Local Level

Versicherungsämter
 Allgemeine Sozialverwaltung
 Verwaltung der Jugendhilfe
 Lastenausgleichsverwaltung
 Einrichtungen der Sozialhilfe (Alten-, Pflege- und Obdachlosenheime)
 Einrichtungen der Jugendhilfe (Wohnheime, Beratungsstellen)
 Tageseinrichtungen für Kinder (seit 2001)

Table 3.8 Health, Environment and Recreation, 1960-2002

"Gesundheit, Sport und Erholung", covers

at Federal Level

Gesundheitswesen (Bundeszentrale für gesundheitliche Aufklärung)
 Umweltschutz (Umweltbundesamt, Sachverständigenrat für Umweltfragen, Bundesamt für Strahlenschutz)

at Länder Level

Gesundheitsbehörden (Landesämter für das Gesundheitswesen, Gesundheitsämter)
 Krankenhäuser u. Heilstätten
 Gesundheitswesen (Hygieneinstitute, Einrichtungen der Arznei- und Lebensmittelkontrolle, medizinische Untersuchungsämter)
 Sport und Erholung (Park- und Gartenanlagen, Badeanstalten, Sportstätten der Stadtstaaten)
 Umweltschutz (Landesanstalten für Immissionsschutz, Umweltschutz)

at Local Level:

Gesundheitsverwaltung
 Krankenhäuser
 Sport und Erholung (Sportstätten, Badeanstalten, Park- und Gartenanlagen, sonstige)
 Sonstiges (Ambulatorien, Beratungsstellen, Gemeindepflegestationen)

Table 3.9 Agriculture and Forestry Administration, 1960-2002

"Ernährung, Landwirtschaft und Forsten", covers

at Federal Level

Bundesamt für Ernährung und Forstwirtschaft

Bundessortenamt

at Länder Level:

Landesamt für Ernährungswirtschaft

Landwirtschaftsämter

Forstdirektionen, Versuchsgüter, -anstalten

at Local Level:

Landwirtschaftsämter

3.10 Housing, Land Use Regulation, and Communal Services, 1960-2002

"Wohnungswesen, Raumordnung, kommunale Gemeinschaftsdienste", covers

at Länder Level

Raumordnung, Landesplanung, Vermessungswesen (Landesvermessungsämter, Katasterverwaltungen)

Kommunale Gemeinschaftsdienste bei Stadtstaaten (Ortsentwässerung, Müllbeseitigung, Straßenreinigung, Schlacht- und Viehhöfe)

at Local Level:

Wohnungsbauförderung u. Wohnungsfürsorge

Städteplanung, Vermessung, Bauordnung (Katasterverwaltung, Vermessungsamt)

Kommunale Gemeinschaftsdienste (Straßenbeleuchtung, Straßenreinigung, Abwasserbeseitigung, Abfallbeseitigung, Märkte, Schlacht- und Viehhöfe, Bestattungswesen, sonstige)

Table 3.11 Transportation and Communication, 1960-2002

"Verkehrs- und Nachrichtenwesen" does not include rail and mail personnel, covers

at Federal Level

Wasserstraßen u. Häfen (Bundeswasser u. Schifffahrtsverwaltung, Bundesanstalt für Wasserbau, Bundesanstalt für Gewässerkunde, Bundesamt für Seeschifffahrt und Hydrographie)

Luftfahrt (Flugsicherung, Luftfahrt-Bundesamt)

Wetterdienst

Post- und Fernmeldewesen (Bundesamt für Post und Telekommunikation, Bundesamt für Zulassungen in der Telekommunikation)

Sonstiges (Bundesanstalt für Straßenwesen, Kraftfahrtbundesamt)

at Länder Level:

Straßen- und Brückenbau (Landesämter für Straßenbau, Straßenbaudirektionen, Straßenbauämter, Autobahnämter)

Wasserstraßen u. Häfen (Hafen- und Schifffahrtsverwaltungen, Wasser- und Schifffahrtsämter, Hafen- und Umschlagseinrichtungen)

at Local Level:

Straßenunterhalt, Parkeinrichtungen

Table 3.14 Public Enterprises, 1960-2002

"Rechtlich unselbständige Wirtschaftsunternehmen", covers

at Federal Level

Land- und Forstwirtschaftliche Unternehmen
 Versorgungsunternehmen
 Verkehrsunternehmen
 Gewerbeunternehmen (Bundesdruckerei)
 Allgemeines Grund- und Kapitalvermögen, Sondervermögen
 Sonstige (Bundeswehrkleiderkasse)

at Länder Level

Land- und Forstwirtschaftliche Unternehmen
 Versorgungsunternehmen (Elektrizität, Erdgas u. Wasser, Fernheizwerke)
 Bergbau und Gewerbe (Münzbetriebe)
 Allgemeines Grund- und Kapitalvermögen, Sondervermögen
 Sonstige (Staatsbäder)

at Local Level

Verwaltung der wirtschaftlichen Unternehmen
 Land- und Forstwirtschaftliche Unternehmen
 Versorgungsunternehmen (Elektrizität, Erdgas u. Wasser, Fernheizwerke)
 Verkehrsunternehmen (Straßenbahn, Autobusse, Hafenanlagen)
 Unternehmen der Wirtschaftsförderung, Kur- und Badebetriebe, sonstige wirtschaftliche Unternehmen
 Allgemeines Grund- und Sondervermögen

Table 3.15 Economic Services, 1960-2002

"Energie- und Wasserwirtschaft, Gewerbe, Dienstleistungen", covers

at Federal Level

Bundesamt für Wirtschaft, Bundeskartellamt, Bundesaufsichtsämter für das Kreditwesen u. für das Versicherungswesen, Bundesstelle für Außenhandelsinformation, Bundesausfuhramt

at Länder Level

Landesgewerbeämter, Landeseichdirektionen, Wasserwirtschaftsverwaltungen

at Local Level

Wasserläufe, Wasserbau
 Wirtschaftsförderung, Fremdenverkehr

Verwaltungswissenschaftliche Beiträge

ISSN 0935-073X (ab Nr. 24)

- 24 Hans-Ulrich Derlien, Genesis and Structure of Evaluation Efforts in Comparative Perspective. 1989 (vergriffen)
- 25 Hans-Ulrich Derlien/Renate Mayntz und Mitarbeiter, CES II. Einstellungen der politisch-administrativen Elite des Bundes 1987. 1988 (vergriffen)
- 26 Hans-Ulrich Derlien, Bureaucracy in Art and Analysis: Kafka and Weber. 1989
- 27 Hans-Ulrich Derlien, Regimewechsel und Personalpolitik. Beobachtungen zur politischen Säuberung und zur Integration der Staatsfunktionäre der DDR in das Berufsbeamtentum. 1991 (vergriffen)
- 28 Hans-Ulrich Derlien (Hg.), Verwaltungsprobleme der neuen Bundesländer. Ein Seminarbericht. 1992 (vergriffen)
- 29 Stefan Löwenhaupt, Vertrauen in Institutionen und Einstellungen der Bürger zur Verwaltung. Bericht zur Datenlage. 1993
- 30 Klaus Schulenburg, Die Ämterbildung in Brandenburg als politischer Prozeß. 1994
- 31 Hans-Ulrich Derlien/Stefan Löwenhaupt, Verwaltungskontakte und Institutionenvertrauen. 1996
- 32 Hans-Ulrich Derlien/Guy Peters, Who Works for Government and What Do They Do? Common Trends and Structural Differences of Public Employment in the United States and Germany. 1998
- 33 Hans-Ulrich Derlien, From Administrative Reform to Administrative Modernization. 1998
- 34 Hans-Ulrich Derlien/Silke Heinemann/Stefan Lock, The German Public Service - Structure and Statistics. 1998