

This work has been submitted to NECTAR, the  
**Northampton Electronic Collection of Theses and  
Research.**

<http://nectar.northampton.ac.uk/1238/>

**Creator(s):** S M Raleigh, L van der Merwe, W J Ribbans, R K W Smith, M P Schweltnus and M Collins.

**Title:** Variants within the MMP3 gene are associated with achilles tendinopathy: possible interaction with the COL5A1 gene

**Date:** 2009

**Originally published by:** British Journal of Sports Medicine

**Example citation:** Raleigh, S., van der Merwe, L., Ribbans, W., Smith, R., Schweltnus, M. and Collins, M. (2009) Variants within the MMP3 gene are associated with achilles tendinopathy: possible interaction with the COL5A1 gene. *British Journal of Sports Medicine*. **43**(7), pp. 514-520.

**Version of item:** Final published version



## Variants within the MMP3 gene are associated with Achilles tendinopathy: possible interaction with the COL5A1 gene

S M Raleigh, L van der Merwe, W J Ribbans, R K W Smith, M P Schwellnus and M Collins

*Br. J. Sports Med.* 2009;43;514-520; originally published online 28 Nov 2008; doi:10.1136/bjsem.2008.053892

---

Updated information and services can be found at:  
<http://bjsm.bmj.com/cgi/content/full/43/7/514>

---

*These include:*

### References

This article cites 34 articles, 14 of which can be accessed free at:  
<http://bjsm.bmj.com/cgi/content/full/43/7/514#BIBL>

### Rapid responses

You can respond to this article at:  
<http://bjsm.bmj.com/cgi/eletter-submit/43/7/514>

### Email alerting service

Receive free email alerts when new articles cite this article - sign up in the box at the top right corner of the article

---

### Topic collections

Articles on similar topics can be found in the following collections

[Achilles tendinitis](#) (21 articles)  
[Tendon rupture](#) (16 articles)

---

### Notes

---

To order reprints of this article go to:  
<http://journals.bmj.com/cgi/reprintform>

To subscribe to *British Journal of Sports Medicine* go to:  
<http://journals.bmj.com/subscriptions/>

# Variants within the *MMP3* gene are associated with Achilles tendinopathy: possible interaction with the *COL5A1* gene

S M Raleigh,<sup>1</sup> L van der Merwe,<sup>2</sup> W J Ribbans,<sup>1</sup> R K W Smith,<sup>3</sup> M P Schwellnus,<sup>4</sup> M Collins<sup>4,5</sup>

<sup>1</sup>Division of Health and Life Sciences, University of Northampton, Northampton, UK; <sup>2</sup>Biostatistics Unit, South African Medical Research Council, Cape Town, South Africa; <sup>3</sup>Veterinary Clinical Sciences, Royal Veterinary College, Herts, UK; <sup>4</sup>MRC/UCT Research Unit for Exercise Science and Sports Medicine of the Department of Human Biology, Faculty of Health Sciences, University of Cape Town, Cape Town, South Africa; <sup>5</sup>South African Medical Research Council, Cape Town, South Africa

Correspondence to:  
Dr S Raleigh, Division of Health and Life Sciences, University of Northampton, Park Campus, Boughton Green Road, Northampton NN2 7AL, UK; [Stuart.Raleigh@northampton.ac.uk](mailto:Stuart.Raleigh@northampton.ac.uk)

Accepted 19 November 2008  
Published Online First  
28 November 2008

## ABSTRACT

**Objectives:** Sequence variation within the *COL5A1* and *TNC* genes are known to associate with Achilles tendinopathy. The primary aim of this case-control genetic association study was to investigate whether variants within the matrix metalloproteinase 3 (*MMP3*) gene also contributed to both Achilles tendinopathy and Achilles tendon rupture in a Caucasian population. A secondary aim was to establish whether variants within the *MMP3* gene interacted with the *COL5A1* rs12722 variant to raise risk of these pathologies.

**Methods:** 114 subjects with symptoms of Achilles tendon pathology and 98 healthy controls were genotyped for *MMP3* variants rs679620, rs591058 and rs650108.

**Results:** As single markers, significant associations were found between the GG genotype of rs679620 (OR = 2.5, 95% CI 1.2 to 4.90,  $p = 0.010$ ), the CC genotype of rs591058 (OR = 2.3, 95% CI 1.1 to 4.50,  $p = 0.023$ ) and the AA genotype of rs650108 (OR = 4.9, 95% CI 1.0 to 24.1,  $p = 0.043$ ) and risk of Achilles tendinopathy. The ATG haplotype (rs679620, rs591058, and rs650108) was under-represented in the tendinopathy group when compared to the control group (41% vs 53%,  $p = 0.038$ ). Finally, the G allele of rs679620 and the T allele of *COL5A1* rs12722 significantly interacted to raise risk of AT ( $p = 0.006$ ). No associations were found between any of the *MMP3* markers and Achilles tendon rupture.

**Conclusion:** Variants within the *MMP3* gene are associated with Achilles tendinopathy. Furthermore, the *MMP3* gene variant rs679620 and the *COL5A1* marker rs12722 interact to modify the risk of tendinopathy. These data further support a genetic contribution to a common sports related injury.

There is a spectrum of pathology that can affect the Achilles tendon and surrounding structures.<sup>1</sup> Achilles tendinopathy (AT) is one of these pathologies which is a painful and degenerative condition that affects individuals who participate in a range of sporting pursuits as well as the less physically active.<sup>2,3</sup> Acute spontaneous rupture is another common pathology that can affect the Achilles tendon, particularly in the middle-aged, male athlete.<sup>4</sup> A number of intrinsic and extrinsic factors have been implicated in raising the risk of both AT and Achilles tendon rupture.<sup>5</sup>

In recent years evidence has emerged that Achilles tendon pathology has a genetic component. For example, Mokone and colleagues have identified that a GT repeat variant within the gene that encodes the tenascin C protein (*TNC*), a key constituent of tendon which is regulated by

mechanical loading,<sup>6,7</sup> is associated with AT and rupture.<sup>8</sup> In addition to the *TNC* gene, polymorphisms within the 3'-untranslated region of the *COL5A1* gene have also been associated with AT in both South African<sup>9</sup> and more recently an Australian population.<sup>10</sup> However, variation within the Sp1 binding site of the *COL1A1* gene does not appear to associate with Achilles tendon pathology,<sup>11</sup> nor do polymorphisms within the related *COL14A1* and *COL12A1* genes.<sup>12</sup> Definitive biochemical mechanisms that explain these observations are presently unknown and should form the focus of future investigations.

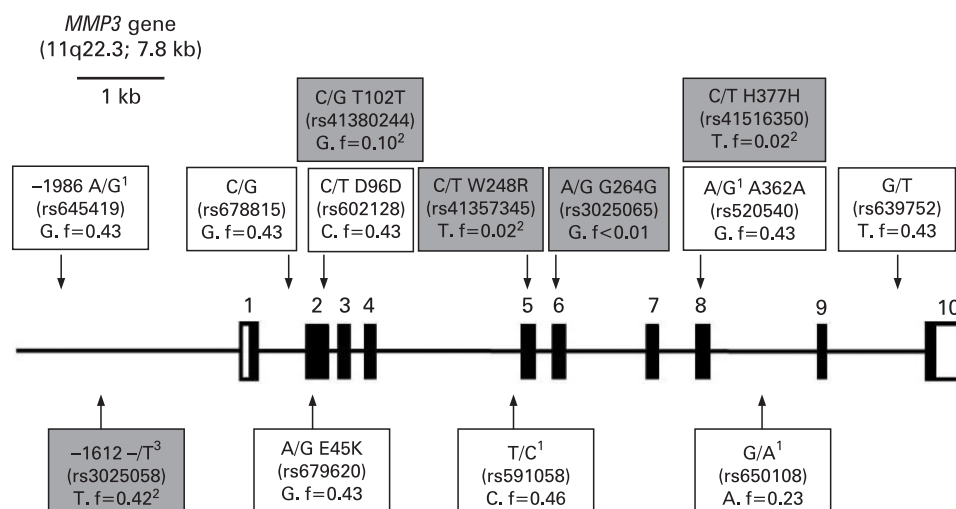
In addition to the *TNC* and *COL5A1* genes, Achilles tendon pathology might also be associated with genes that encode proteins with regulatory roles in maintaining extracellular matrix (ECM) homeostasis. Included in this class are the matrix metalloproteinases (*MMPs*). The *MMPs* are known to consist of over 20 distinct endopeptidases that can catalyse a broad spectrum of both ECM and non-ECM substrates.<sup>13</sup> One of the family, *MMP3*, can catalytically degrade multiple substrates including: types II, IV, V, IX, X collagens, laminin, fibronectin, proteoglycan, decorin and aggrecan.<sup>13,14</sup> *MMP3* is also known to activate, *via* propeptide removal, several other *MMPs*.<sup>15,16</sup> Expression of the *MMP3* gene can be substantially altered by the 5A/6A promoter polymorphism<sup>16</sup> and this variant has been associated with a number of pathological states.<sup>17,18</sup> Interestingly, reduced levels of *MMP3* mRNA<sup>19,20</sup> and immunochemically detectable *MMP3* protein have been observed in resected AT tissue compared to control tissue.<sup>20</sup>

Although there has been previous speculation about the possible role of *MMP* genes in tendinopathy<sup>21,22</sup> the hypothesis has, to our knowledge, never been tested. Accordingly, the aim of this investigation was to establish whether variants within the *MMP3* gene were associated with AT or Achilles tendon rupture. A secondary aim was to investigate whether *MMP3* and *COL5A1* gene-gene interactions were involved in these Achilles tendon pathologies.

## MATERIALS AND METHODS

### Subjects

In all, 114 Caucasian subjects diagnosed with Achilles tendon injuries, including 75 with chronic AT (TEN) using clinical criteria and 39 with partial (n = 3) or complete ruptures of the Achilles tendon (RUP), were recruited for this study from the medical practice at the Sports Science Institute of



**Figure 1** A schematic representation of the exon (rectangles) and intron (horizontal lines) boundaries of the *MMP3* (matrix metalloproteinase 3) gene, which is located in the negative orientation on chromosome 11. The translated regions of the exons are solid while the untranslated regions (UTRs) are clear. Exon numbers are indicated. The chromosomal location and the size of the gene are given in brackets. Single nucleotide polymorphisms (SNPs) with high heterozygous frequencies (>20%) identified from databases hosted by the international HapMap project are annotated (clear boxes). In addition, three synonymous, one nonsynonymous and a promoter (rs3025058, -/T) SNPs identified from databases hosted by the National Centre for Biotechnology Information (NCBI) are also annotated (grey boxes). The three SNPs used in this study are annotated below the gene as clear boxes. Accession numbers and base changes are indicated for all the SNPs. The minor alleles and, unless otherwise indicated, their frequencies from the HapMap CEU population are also indicated. Where applicable the amino acid change and number of the exonic SNPs, as well as, the nucleotide position of the two SNPs within the promoter region are indicated. All the information used to construct this figure was obtained from databases hosted by the NCBI and Ensembl (<http://www.ensembl.org/index.html>) as well as from Beyzade *et al.*<sup>16</sup> The complementary nucleotides are given in the databases and used in this manuscript to avoid confusion.<sup>2</sup> Since frequency data was not available for the HapMap CEU population, minor allele frequency data from other available European population data within the NCBI databases are indicated.<sup>3</sup> Also referred to as the -1171 5A/6A polymorphism.

South Africa and other clinical practices within the greater Cape Town area of South Africa. Rupture of the Achilles tendon was confirmed during surgery or by imaging. Ten of the subjects in the RUP group had a history of tendinopathy. An additional 98, apparently healthy, unrelated, Caucasian subjects without any history of symptomatic Achilles tendon injuries were recruited as controls (CON). The inclusion and exclusion criteria of the participants have been previously described.<sup>8,9</sup>

Prior to participation in this study, the subjects gave informed written consent and completed medical history questionnaire forms. This study was approved by the Research Ethics Committees of the Faculty of Health Sciences within the University of Cape Town, South Africa and the University of Northampton, England.

#### DNA extraction and single nucleotide polymorphism (SNP) selection

DNA was extracted using the procedure described by Lahiri and Nurnberger<sup>23</sup> and modified by Mokone *et al.*<sup>8</sup>

Single nucleotide polymorphisms (SNPs) within the *MMP3* gene and its 5'-flanking sequence were identified from databases hosted by the National Centre for Biotechnology Information (NCBI) (<http://www.ncbi.nlm.nih.gov/>) and the International HapMap project (<http://www.hapmap.org/>). The *MMP3* gene is transcribed in the negative orientation resulting in the mRNA sequence corresponding to the bottom DNA strand. As indicated in fig 1, the complementary nucleotides are given in the databases for some of the SNPs. These complementary nucleotides are used in this manuscript to avoid confusion. Seven exonic SNPs were identified and annotated onto a schematic diagram (fig 1). Two of these SNPs were nonsynonymous (SNPs which change the amino acid sequence in the gene product), of which only one, rs679620 (E45K) within exon

2, has a high heterozygous frequency and could therefore be potentially informative in genetic case-control association studies. Two of the five synonymous SNPs, rs602128 (D96D) within exon 2 and rs520540 (A362A) within exon 8, also have a high heterozygous frequency and were therefore considered potentially informative. From the databases hosted by the International HapMap project these three exonic SNPs formed a single haplotype block together with 4 informative (high heterozygosity) intronic SNPs that spanned the entire gene and a single informative SNP (rs645419) at -2 kb within the promoter region (fig 1). The functional 5A/6A (rs3025058, -/T) polymorphism, which is often used in association studies involving the *MMP3* gene<sup>17,18</sup> is located downstream of SNP rs645419. Four major haplotypes which contained these eight potentially informative SNPs were identified using HaploView V.4.1<sup>24</sup> and the HapMap CEU data (release 22). The same four haplotypes with similar frequencies were also identified when only three of the eight SNPs were analysed. In this study, the *MMP3* gene was therefore genotyped for SNPs (1) rs679620 a A/G transition at nucleotide position 28 within exon 2, E45K; (2) rs591058 a T/C transition at nucleotide position 1547 within intron 4, and (3) rs650108 a G/A transition at position 495 within intron 8.

#### *MMP3* SNP genotyping

DNA samples were genotyped for all three *MMP3* variants using fluorescence-based Taqman technology (Applied Biosystems, Foster City, CA, USA). Allele specific probes and flanking primer sets (table 1) were used along with a pre-made PCR mastermix containing ampliQ DNA polymerase Gold (Applied Biosystems, Foster City, CA, USA) in a reaction volume of 25  $\mu$ l. PCR consisted of a 10 minute heat activation step (95°C) followed by 40 cycles of 15 s at 92°C and 1 minute

**Table 1** PCR primers and probes used for genotyping

| SNP      | Primers (forward/reverse)  | Probes  |
|----------|--|---|
| rs591058 | GAGCAGCAACGAGAAATAAATTGGT<br>GCAGACCTGTGTAATGCACATG                      | VIC-CTATTGTTCTCGATTCT<br>FAM-ATTGTTCTCAATTCT                  |
| rs679620 | TGTAAGAGTGACCTAAAACACT-<br>ATACTTATTCTGTTAGA<br>CCTACTGCTTTCTCTAACAACACT | VIC-AACTACTACGAC-<br>CTCAAAA<br>FAM-AACTACTACGA-<br>CCTCGAAAA |
| rs650108 | CATCATTATCAGGTAGAGGTGACAAGT<br>CTCATTGTGTGTTGTTTGTCTTCT                  | VIC-CAAGGGCTACTTCTAAC<br>FAM-AAGGGCTACCTCTAAC                 |

Primer and probe sets were incorporated into a PCR mastermix and used as described in materials and methods.

SNP, single nucleotide polymorphism.

at 60°C. PCR was performed on an MJ MiniOpticon thermocycler (BioRad Laboratories Inc, Herts, UK) and genotypes were determined by endpoint fluorescence using MJ Monitor analysis software (V.3.1).

### Statistical analyses

Assuming an allele frequency of 0.43 (observed for *MMP3*) in the CON group, group sizes of 97 in each group would be adequate to detect an allelic odds ratio of at least 2.25 at a power of 80% and significance level of 5%. Linear and logistic regression models were used to assess difference between the characteristics of the TEN, RUP and CON groups for quantitative and categorical data, respectively. Logistic regression was used to compare the combined, as well as the separate (TEN and RUP) Achilles tendon cases to the control groups, with respect to genotype, allele and haplotype frequencies. Two different methods were used to assess gene-gene interaction between *MMP3* and *COL5A1* (SNP rs12722). Allele combinations consisting of the markers on the two different genes were constructed and their association with case-control status was tested. The odds ratio based multifactor dimensionality reduction (ORMDR) method<sup>25</sup> was also used to select from all SNPs, the pair with the strongest association with tendinopathy. An odds ratio (OR) is the quantitative measure of disease risk being analysed but this is the estimated relative risk of disease with a specific combination of genotypes. Data was analysed using the freely available programming language R (<http://www.r-project.org/>) and specifically packages DGC-genetics (LD, Hardy-Weinberg, genotype and allelic association), haplo.stats (inferred haplotype association) and ORMDR (interaction between loci on case-control status). Pass2008 (<http://www.ncss.com/>) was used for sample size calculation.

## RESULTS

### Subject characteristics

The TEN, RUP and CON groups were similarly matched for age, height, gender and country of birth (table 2). The age of the TEN and RUP groups was the age of initial onset of symptoms of Achilles tendon injury, which were on average 7.8 (SD 8.0) and 7.5 (SD 8.9) years prior to recruitment in this study respectively. The reported weights were also at recruitment, not at time of onset of injury. The TEN and RUP groups were on average significantly heavier with corresponding higher BMI than the CON group. In addition the RUP group was also on average significantly heavier with corresponding higher BMI than the TEN group. There were no *MMP3* single nucleotide polymorphism genotype effects on any of the subject characteristics (results not shown).

**Table 2** Characteristics of the control (CON), Achilles tendinopathy (TEN) and Achilles rupture (RUP) subjects

|                                   | CON                    | TEN                    | RUP                    | p Value† |
|-----------------------------------|------------------------|------------------------|------------------------|----------|
| Age (years)*                      | 36.8 (9.9),<br>n = 91  | 40.5 (13.7),<br>n = 70 | 40.7 (11.5),<br>n = 37 | 0.078    |
| Height (cm)                       | 176 (10),<br>n = 95    | 177 (9),<br>n = 66     | 175 (8),<br>n = 37     | 0.623    |
| Weight (kg)                       | 72.0 (12.1),<br>n = 97 | 78.4 (14.1),<br>n = 69 | 85.2 (15.4),<br>n = 37 | <0.001‡  |
| BMI (kg/cm <sup>2</sup> )         | 23.3 (2.8),<br>n = 95  | 24.9 (3.4),<br>n = 66  | 27.8 (3.7),<br>n = 37  | <0.001‡  |
| Gender (% males)                  | 67.0, n = 97           | 73.0, n = 74           | 73.0, n = 37           | 0.644    |
| Country of birth (% South Africa) | 74.2, n = 97           | 73.2, n = 71           | 78.4, n = 37           | 0.837    |

Gender and country of birth are summarised as a percentage (%), while the remaining variables are expressed as mean (standard deviation). BMI, body mass index.

\*The age of the TEN and RUP groups are the age of the onset of the initial symptoms of Achilles tendon injury, which were on average 7.8 (SD 8.0) and 7.5 (SD 8.9) years prior to recruitment in this study respectively.

†p Value = Global, so CON vs TEN vs RUP.

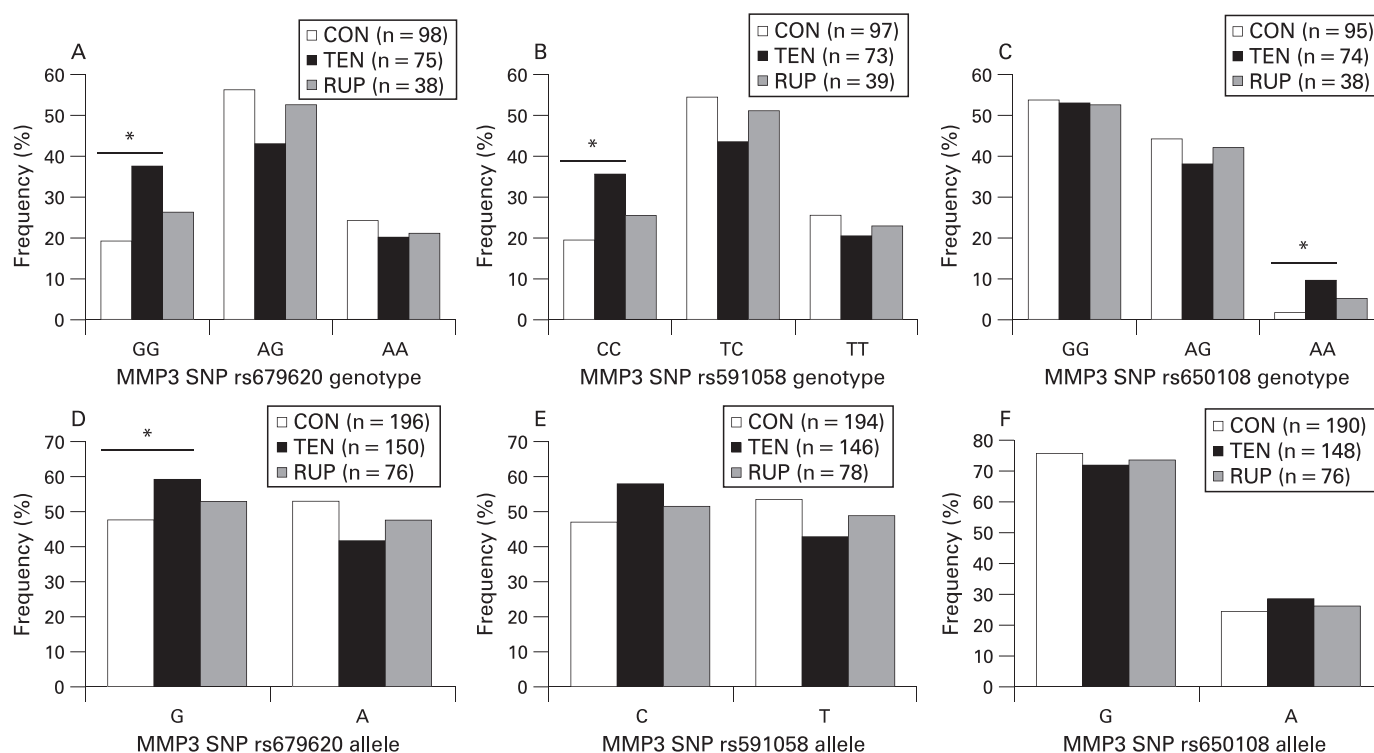
‡Except for the weight difference between the TEN and RUP groups ( $p = 0.033$ ), all other pairwise differences in weight and BMI were highly significant ( $p < 0.01$ ).

Twenty six (38.2%) and five (13.5%) of the subjects were diagnosed with bilateral chronic AT and Achilles rupture respectively. Multiple Achilles tendon injuries (greater than one) were documented in 16 (22.9%) and 13 (35.1%) of the TEN and RUP subjects respectively. Forty four percent of the TEN and 35% of the RUP subjects reported either a bilateral and/or multiple Achilles tendon injury.

### Genotype and allele frequencies

There were no significant differences in the genotype distributions of SNPs rs679620 ( $p = 0.064$ ), rs591058 ( $p = 0.117$ ) and rs650108 ( $p = 0.132$ ) between the Achilles tendon pathology (combined TEN and RUP) and control groups (see figs 2A–C). Similarly, there were no significant differences in the allele distributions of SNPs rs679620 ( $p = 0.057$ ), rs591058 ( $p = 0.083$ ) and rs650108 ( $p = 0.404$ ) between the combined pathology and control groups (figs 2D–F). Since differences have been detected in genotype distributions between subjects with chronic AT or Achilles tendon ruptures,<sup>12</sup> the Achilles tendon pathology group was sub-divided into tendinopathy (TEN) and rupture (RUP) sub-groups. There were significant differences in the distribution of the genotype ( $p = 0.031$ ) (fig 2A) and allele ( $p = 0.037$ ) (fig 2D) frequencies of the *MMP3* rs679620 SNP between the CON and TEN groups. The GG genotype was significantly over-represented in TEN group (37.3%,  $n = 28$ ) when compared to the CON group (19.4%,  $n = 19$ ) ( $p = 0.010$ , OR = 2.5, 95% CI 1.2 to 4.9). The differences in the genotype (figs 2B and 2C) or allele (figs 2E and 2F) frequency distributions of the *MMP3* rs591058 (genotype  $p = 0.065$  and allele  $p = 0.051$ ) and rs650108 (genotype  $p = 0.093$  and allele  $p = 0.368$ ) between the CON and TEN groups were not significant. But the CC genotype of SNP rs591058 was over-represented in the TEN (35.6%,  $n = 26$ ) compared to the CON (19.6%,  $n = 19$ ) ( $p = 0.023$ , OR = 2.3, 95% CI 1.1 to 4.5) and the AA genotype of SNP rs650108 was over-represented in the TEN (9.5%,  $n = 7$ ) compared to the CON (2.1%,  $n = 2$ ) ( $p = 0.043$ , OR = 4.9, 95% CI 1.0 to 24.1). Similar results were obtained when the 10 RUP subjects with a history of tendinopathy were included in the analysis as part of the TEN group (results not shown).

There were, however, no significant differences in the distribution of the genotype (rs679620,  $p = 0.666$ ; rs591058,  $p = 0.734$ ; and rs650108,  $p = 0.627$ ) (figs 2A, 2B and 2C) and



**Figure 2** Relative genotype (A–C) and allele (D–F) frequencies of the *MMP3* single nucleotide polymorphisms (SNPs) rs679620 (A and D), rs591058 (B and E) and rs650108 (C and F) for the asymptomatic control (CON, clear bars), chronic AT (TEN, solid bars) and Achilles rupture (RUP, hatched bars) groups. (A) rs679620: TEN vs CON,  $p = 0.031$ ; RUP vs CON,  $p = 0.666$ ; (B) rs591058: TEN vs CON,  $p = 0.065$ ; RUP vs CON,  $p = 0.734$ . (C) rs650108: TEN vs CON,  $p = 0.093$ ; RUP vs CON,  $p = 0.627$ . (D) rs679620: TEN vs CON,  $p = 0.037$ ; RUP vs CON  $p = 0.500$ . (E) rs591058: TEN vs CON,  $p = 0.051$ ; RUP vs CON,  $p = 0.592$ . (F) rs650108: TEN vs CON,  $p = 0.368$ ; RUP vs CON,  $p = 0.754$ . The asterisks and solid lines represent specific genotype (A) GG,  $p = 0.010$ ; (B) CC,  $p = 0.023$ ; (C) AA,  $p = 0.043$ ; or allele (D) G,  $p = 0.037$ ; significant differences between the TEN and CON groups. The number (n) of subjects (A to C) or alleles (D to F) are in parenthesis. CON, control group; RUP, Achilles tendon ruptures; TEN, tendinopathy.

allele (rs679620,  $p = 0.527$ ; rs591058,  $p = 0.604$ ; and rs650108,  $p = 0.840$ ) (figs 2D, 2E, 2F) frequencies of the three *MMP3* SNPs between the CON and RUP groups. The three *MMP3* SNP genotype distributions within the CON, TEN and RUP groups were in Hardy-Weinberg equilibrium. Although there was a reduction in statistical power, similar genotype distributions were nevertheless observed when only the South African born subjects were analysed (results not shown).

#### Linkage disequilibrium and inferred haplotype analysis of *MMP3*

The two SNPs rs679620 (A/G) and rs591058 (T/C) are in almost perfect linkage disequilibrium (LD), allele G in the former corresponds to allele C in the latter, with only one heterozygous individual for rs679620 being TT for rs591058. The  $D'$  measure was 1 ( $p < 0.001$ ) and the coefficient of correlation,  $r$ , was 0.98. Both SNPs were also in high LD with rs650108,  $D' = 1$  ( $p < 0.001$ ). The coefficient of correlation of rs650108 is  $-0.57$  and  $-0.58$  with rs679620 and rs591058 respectively (figure 3A). Similar values were obtained when the CON, TEN and RUP subjects were analysed separately (results not shown).

As expected only the AT and GC haplotypes were inferred with a frequency greater than 1% from SNPs rs679620 and rs591058. Since the GG and CC genotypes of these SNPs were over-represented in the AT group (figs 2A and 2B), the GC haplotype was over-represented in this group (47% CON vs 59% TEN,  $p = 0.031$ ). Since both these *MMP3* SNPs were also in high LD with rs650108 (fig 3A), only three of the eight possible haplotypes (ATG, GCA and GCG) containing the three SNPs were inferred with a frequency more than 1%. The ATG

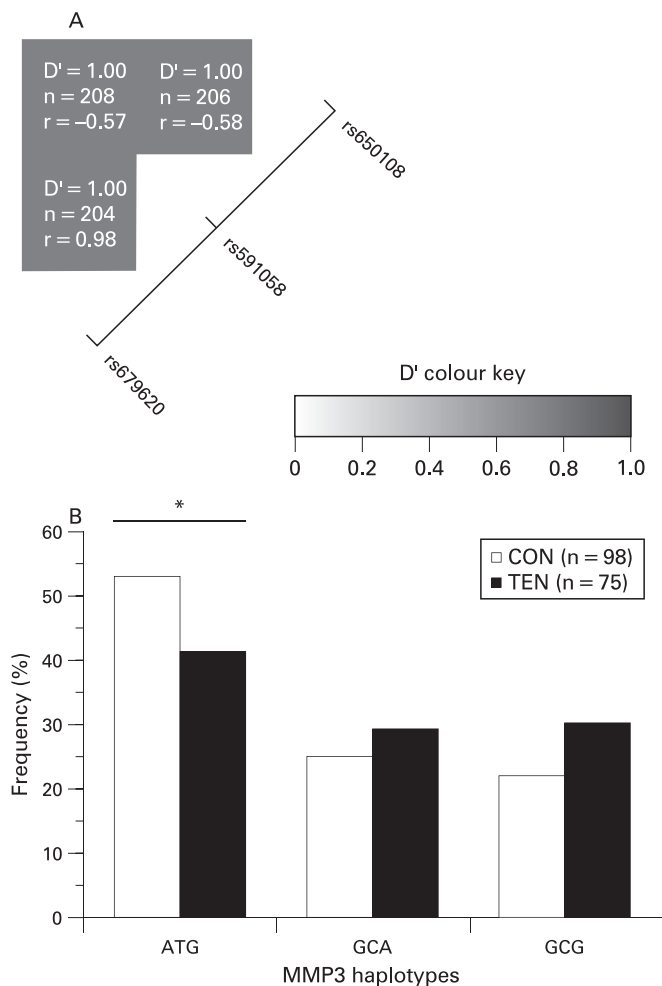
haplotype (53% CON vs 41% TEN) was significantly under-represented in the TEN group ( $p = 0.038$ ) (fig 3B).

#### *MMP3* and *COL5A1* gene-gene interaction

September *et al*<sup>10</sup> have previously shown that the CC genotype of the *COL5A1* BstUI RFLP (rs12722) was under-represented in patients with chronic AT. *MMP3* SNP rs679620 together with the *COL5A1* SNP formed the best pair of genotypes for estimating risk for AT. The genotype pairs together with their frequencies and estimated risk are summarised in table 3. The *MMP3* rs679620 A allele (AA or AG genotype) combined with the *COL5A1* rs12722 CC genotype had the lowest risk for AT. All the possible A and C allele combinations were associated with the lowest risk. In support of this, the *MMP3* rs679620 G/A and *COL5A1* rs12722 C/T allele combinations (pseudo-haplotypes) were significantly associated with TEN and CON status (global-stat = 10.4,  $df = 3$ ,  $p = 0.016$ ) (fig 4). The A+C allele combination was significantly associated with the controls (30% CON vs 15% TEN,  $p = 0.002$ ), while the G+T allele combination was significantly associated with TEN (25% CON vs 36% TEN,  $p = 0.006$ ).

#### DISCUSSION

We report the first evidence that sequence variation within the *MMP3* gene is associated with AT. The data also demonstrate that a significant interaction exists between the exonic *MMP3* SNP (rs679620) and the *COL5A1* 3'-untranslated region (rs12722) polymorphism and risk of AT. Our data do not support significant association between *MMP3* variants alone,



**Figure 3** (A) Linkage disequilibrium (LD) structure of the three single nucleotide polymorphisms (SNPs), rs679620, rs591058 and rs650108, within the *MMP3* gene. The LD map was constructed using the combined genotype data from the two Achilles tendon pathology and control groups. As indicated in colour key, the strength of LD between any two SNPs is indicated by the colour of the cells. The  $D'$  values, sample sizes (n) and the coefficient of correlations (r) between pairs of markers are given within each cell. A positive correlation (r) represents major alleles being associated with each other, while a negative correlation (r) means the major allele of the one SNP is associated with the minor allele of the other and vice versa. (B) Inferred haplotype frequency distributions from *MMP3* rs679620, rs591058 and rs650108 in the control (CON, clear bars) and AT (TEN, solid bars) groups. Global  $P = 0.144$ . The asterisk and solid line marks the significant difference ( $p = 0.038$ ) between the ATG haplotype pair. The number (n) of subjects in each group is in parenthesis.

or in combination with the *COL5A1* variant, and Achilles tendon rupture. This suggests there are different inherent predispositions to both AT and Achilles rupture. Interestingly, a similar observation has been recently reported with a RFLP in the *COL5A1* gene that is associated with AT but not with ruptures.<sup>9</sup>

The apparent dissociation in genetic influence between AT and rupture is intriguing. It is known that tissue obtained during surgery to repair an acute Achilles rupture will reveal evidence of pre-existing tendon pathology.<sup>26</sup> In contrast it has been proposed that acute tendinopathy may occur by different molecular mechanisms associated with the ageing of "normal" tendon tissue<sup>27 28</sup> and hence may explain a different genetic

**Table 3** The *MMP3* rs679620 G/A and *COL5A1* rs12722 C/T genotype pairs, together with their frequencies within the chronic Achilles tendinopathy (TEN) and control (CON) groups, as well as their estimated risk (OR) and the risk order

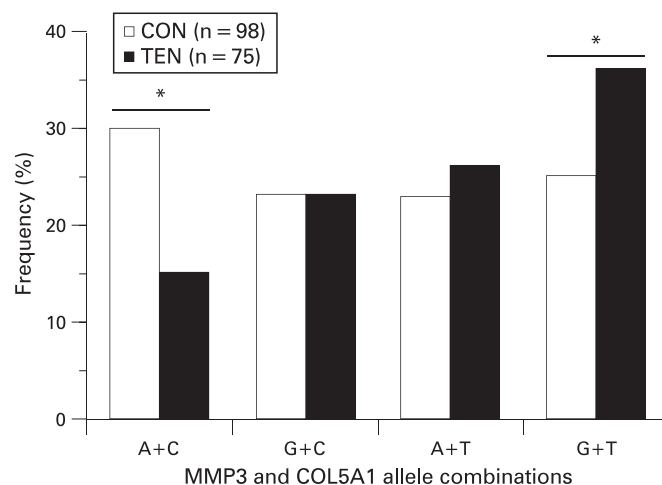
| <i>MMP3</i> | <i>COL5A1</i> * | CON (98)  | TEN (74)  | OR   | Risk order |
|-------------|-----------------|-----------|-----------|------|------------|
| GG          | TT              | 3.1 (3)   | 10.8 (8)  | 3.48 | 8          |
| GG          | TC              | 12.2 (12) | 20.3 (15) | 1.66 | 6          |
| GG          | CC              | 4.1 (4)   | 6.8 (5)   | 1.66 | 7          |
| AG          | TT              | 21.4 (21) | 23.0 (17) | 1.07 | 5          |
| AG          | TC              | 16.3 (16) | 16.2 (12) | 0.99 | 4          |
| AG          | CC              | 18.4 (18) | 4.1 (3)   | 0.22 | 1          |
| AA          | TT              | 1.0 (1)   | 5.4 (4)   | 5.40 | 9          |
| AA          | TC              | 15.3 (15) | 9.5 (7)   | 0.62 | 3          |
| AA          | CC              | 8.2 (8)   | 4.1 (3)   | 0.50 | 2          |

The CON and TEN values are represented as a frequency (%) with the number of subjects (n) in parenthesis.

\*The CC genotype is under-represented in TEN subjects.<sup>10</sup>

predisposition to that of acute rupture. This hypothesis would challenge the assumption that similarities in gross histological appearances have the same underlying molecular mechanism of injury although this requires further investigation and verification.

All three *MMP3* polymorphisms (rs679620, rs591058 and rs650108) investigated in this study have been found to associate with AT. As single loci, the rs679620 polymorphism, GG genotype, and rs591058 polymorphism, CC genotype, co-segregate with AT with odds ratios of 2.5 and 2.3 respectively. The rs650108 SNP, AA genotype has a higher odds ratio (4.9) but only seven cases possessed this genotype due to its low allele frequency in the population. When analysed as an inferred haplotype the ATG sequence combination of these three SNPs is significantly under-represented in AT cases compared to controls and it may be that this haplotype protects against the development of AT. Genotype and allele frequencies of the three SNPs investigated in this study were similar to previously reported values from databases hosted by the NCBI and Ensembl as well as from Beyzade *et al.*<sup>17</sup>



**Figure 4** The relative distribution of the allele combinations of *MMP3* SNP rs679620 (A/G) and *COL5A1* SNP rs12722 (C/T) for the control (CON, clear bars) and Achilles tendinopathy (TEN, solid bars) groups. Global stat = 10.4,  $df = 3$  and  $p = 0.016$ . The asterisk and solid line marks the significant difference between the allele combination pairs. AC,  $p = 0.002$  and GT,  $p = 0.006$ . The number (n) of subjects in each group is in parenthesis.

Although our investigation has focused on variation within the *MMP3* gene and predisposition to AT, a number of previous studies have found that the expression of *MMP3* RNA is reduced in both degenerative<sup>20</sup> and ruptured Achilles samples.<sup>29</sup> However, why this occurs is still not fully understood but reduction in *MMP3* RNA or protein, without a corresponding drop in the tissue inhibitors of metalloproteins (TIMPs), might lead to an increase in proteoglycans<sup>30</sup> which have been documented in degenerative tendons.<sup>31</sup> Although reduced *MMP3* expression or activity might lead to tendon pathology, elevated levels of *MMP3* may also underlie predisposition to tendinopathy. This idea is supported by the observation that the fluoroquinolone based antibiotic ciprofloxacin, which can induce Achilles tendon pain and rupture in some individuals,<sup>32</sup> has also been reported to substantially increase *MMP3* RNA in IL-1 $\beta$  treated human tendon cells in culture.<sup>33</sup>

It must be remembered, of course, that allelic association to a trait or disease does not necessarily infer cause. Accordingly, this study does not address possible mechanisms of how the *MMP3* polymorphisms, alone, as a haplotype, or in the case of rs679620, in combination with the *COL5A1* rs12722 SNP (BstUI RFLP), might lead to pathology. However, the rs679620 variant of *MMP3* is a non-synonymous polymorphism. Specifically, a glutamate residue is coded for by possession of the G allele (GAA codon) at the rs679620 loci and a lysine residue is encoded for by the A allele (AAA codon).<sup>34</sup> Although both residues are polar the glutamate side chain is negatively charged compared to the positive charge on lysine.<sup>35</sup> The residue sits at position 45 from the start of the polypeptide chain<sup>34</sup> and the first 82 residues, incorporating the propeptide,<sup>36</sup> are cleaved by a proteinase during the processing of pro*MMP3* into mature *MMP3*.<sup>37</sup> It might be possible that appropriate removal of the propeptide has some dependency on the presence of either a Lys or Glu at position 45 and hence influence downstream function of the mature *MMP3* enzyme. Beyzade *et al*<sup>17</sup> have however demonstrated using clustal alignment analysis that although most of the flanking amino acids are conserved across species, the Glu45 amino acid is not.

It is possible that this association is due to genetic linkage between the non-synonymous *MMP3* polymorphism (rs679620) and other polymorphisms within the *MMP3* gene and flanking sequences. In support of this, the three SNPs investigated in this study, which spanned most of the gene, were in high linkage disequilibrium ( $D' = 1$ ) with each other. In addition a SNP within exon 2 of the *MMP3* gene is also tightly linked ( $D' > 0.9$ ) to the well characterised functional -1612 -/T (5A/6A) and -1986 A/G polymorphisms within the promoter.<sup>17</sup> The transcriptional activity of the 5A allele is higher than the 6A allele.<sup>16</sup> Based on our and other investigator's linkage data within this locus,<sup>17</sup> we speculate that the non-synonymous SNP rs679620 investigated in this study is in high linkage disequilibrium with the functional 1612 -/T (5A/6A) polymorphism.

Of the 23 *MMPs* in humans, nine of their genes form a cluster on the long arm of chromosome 11. The *MMP3* gene is part of this cluster and due to the nature of genetic association studies we can not exclude that one of the other eight *MMP* genes are involved in the pathogenesis of AT. Recently Ye *et al*<sup>18</sup> have demonstrated that variants within *MMP3*, together with three other *MMP* genes within this cluster, namely *MMP-7*, -12 and -13, are associated with rheumatoid arthritis.

Our data demonstrate that the *MMP3* variants investigated in this study interact with the *COL5A1* rs12722 polymorphism in modifying the risk of AT. Although AT is likely to be a complex condition involving a number of gene-gene and

### What is already known about this topic

Both *TNC* and *COL5A1* gene variants have been associated with an increased risk of Achilles tendinopathy.

### What this study adds

Our data demonstrate, for the first time, that variants within the matrix metalloprotein 3 gene (*MMP3*) can significantly modify the risk of tendinopathy. We also show that a variant within the *COL5A1* gene interacts with *MMP3* variants to modify risk.

gene-environment interactions<sup>31</sup> there have so far been no such reports of any gene-gene interactions that relate to increased risk of AT. At present we are unable to provide a detailed mechanistic explanation for the interaction of *MMP3* variants with the rs12722 polymorphism of *COL5A1* but it is interesting to note that type V collagen is a reported substrate for *MMP3*<sup>14</sup> and may influence its synthesis and activation.<sup>38</sup> Hence, individuals that carry risk variants within both of these genes may disrupt possible interactions between type V collagen and *MMP3* during catalysis leading to a heightened risk of AT. Furthermore, future studies might attempt to establish whether there is differential expression of the *MMP3* and *COL5A1* genes in tendinopathy patients carrying the G and T alleles of SNPs rs679620 and rs12722, respectively, when compared to non-carriers. This data would assist in establishing whether these genes are causally implicated in AT.

In addition to the genetic factors identified in this and other studies,<sup>8-10</sup> non-genetic intrinsic factors, as well as extrinsic factors, have been implicated in the aetiology of Achilles tendon pathology.<sup>39</sup> As previously discussed<sup>8</sup> we cannot exclude the possibility that an interaction of weight and/or physical activity exposure with the susceptibility genotype was responsible for the development of Achilles tendon pathology symptoms.

A limitation of this study was that the symptomatic subjects were significantly heavier than the control subjects. Since this was a retrospective study, the body weight of the subjects at the time of injury is unknown. Anecdotally, many subjects reported increases in their body weight after injury as a result of a decrease in physical activity. An additional limitation of this study was the modest sample size.

In conclusion, we report the first evidence that variation within the human *MMP3* gene is associated with AT. We have also established, for the first time, that the *MMP3* variants we have studied interact with a variant within the *COL5A1* gene to increase risk of AT. We suggest repetition of this work in other, larger population studies to confirm our associations.

**Acknowledgements:** The authors would like to thank Dr GG Mokone for assistance in the recruitment of the subjects and the phenotypic data collection for the subjects.

**Funding:** This study was supported in part by funds from the National Research Foundation (NRF) of South Africa (grants no: FA2005021700015 and FA2007032700010), University of Cape Town, University of Northampton and the South African Medical Research Council (MRC).

**Competing interests:** None.

**Ethics approval:** This study was approved by the Research Ethics Committees of the Faculty of Health Sciences within the University of Cape Town, South Africa and the University of Northampton, UK.



## REFERENCES

1. **Puddu G**, Ippolito E, Postacchini F. A classification of Achilles tendon disease. *Am J Sports Med* 1976;**4**:145–50.
2. **Kader D**, Saxena A, Movin T, *et al*. Achilles tendinopathy: some aspects of basic science and clinical management. *Br J Sports Med* 2002;**36**:239–49.
3. **Young JS**, Kumta SM, Maffulli N. Achilles tendon rupture and tendinopathy: management of complications. *Foot Ankle Clin* 2005;**10**:371–82.
4. **Maffulli N**, Wong J. Rupture of the Achilles and patellar tendons. *Clin Sports Med* 2003;**22**:761–76.
5. **Jarvinen TA**, Kannus P, Maffulli N, *et al*. Achilles tendon disorders: etiology and epidemiology. *Foot Ankle Clin* 2005;**10**:255–66.
6. **Jarvinen TA**, Jozsa L, Kannus P, *et al*. Mechanical loading regulates the expression of tenascin-C in the myotendinous junction and tendon but does not induce de novo synthesis in the skeletal muscle. *J Cell Sci* 2003;**116**(Pt 5):857–66.
7. **Jarvinen TA**, Jozsa L, Kannus P, *et al*. Mechanical loading regulates tenascin-C expression in the osteotendinous junction. *J Cell Sci* 1999;**112**(Pt 18):3157–66.
8. **Mokone GG**, Gajjar M, September AV, *et al*. The guanine-thymine dinucleotide repeat polymorphism within the tenascin-C gene is associated with achilles tendon injuries. *Am J Sports Med* 2005;**33**:1016–21.
9. **Mokone GG**, Schweltnus MP, Noakes TD, *et al*. The COL5A1 gene and Achilles tendon pathology. *Scand J Med Sci Sports* 2006;**16**:19–26.
10. **September AV**, Cook J, Handley CJ, *et al*. Variants within the COL5A1 gene are associated with achilles tendinopathy in two populations. *Br J Sports Med* 2009;**43**:357–65.
11. **Posthumus M**, September AV, Schweltnus MP, *et al*. Investigation of the Sp1-binding site polymorphism within the COL1A1 gene in participants with Achilles tendon injuries and controls. *J Sci Med Sport* 2009;**12**:184–9.
12. **September AV**, Posthumus M, van der Merwe L, *et al*. The COL12A1 and COL14A1 genes and Achilles tendon injuries. *Int J Sports Med* 2008;**29**:257–63.
13. **Somerville RP**, Oblander SA, Apte SS. Matrix metalloproteinases: old dogs with new tricks. *Genome Biol* 2003;**4**:216.
14. **Birkedal-Hansen H**, Moore WG, Bodden MK, *et al*. Matrix metalloproteinases: a review. *Crit Rev Oral Biol Med* 1993;**4**:197–250.
15. **Visse R**, Nagase H. Matrix metalloproteinases and tissue inhibitors of metalloproteinases: structure, function, and biochemistry. *Circ Res* 2003;**92**:827–39.
16. **Ye S**, Eriksson P, Hamsten A, *et al*. Progression of coronary atherosclerosis is associated with a common genetic variant of the human stromelysin-1 promoter which results in reduced gene expression. *J Biol Chem* 1996;**271**:13055–60.
17. **Beyzade S**, Zhang S, Wong YK, *et al*. Influences of matrix metalloproteinase-3 gene variation on extent of coronary atherosclerosis and risk of myocardial infarction. *J Am Coll Cardiol* 2003;**41**:2130–7.
18. **Ye S**, Patodi N, Walker-Bone K, *et al*. Variation in the matrix metalloproteinase-3, -7, -12 and -13 genes is associated with functional status in rheumatoid arthritis. *Int J Immunogenet* 2007;**34**:81–5.
19. **Alfredson H**, Lorentzon M, Backman S, *et al*. cDNA-arrays and real-time quantitative PCR techniques in the investigation of chronic Achilles tendinosis. *J Orthop Res* 2003;**21**:970–5.
20. **Ireland D**, Harrall R, Curry V, *et al*. Multiple changes in gene expression in chronic human Achilles tendinopathy. *Matrix Biol* 2001;**20**:159–69.
21. **September AV**, Schweltnus MP, Collins M. Tendon and ligament injuries: the genetic component. *Br J Sports Med* 2007;**41**:241–6.
22. **Magra M**, Maffulli N. Genetics: does it play a role in tendinopathy? *Clin J Sport Med* 2007;**17**:231–3.
23. **Lahiri DK**, Nurnberger JI Jr. A rapid non-enzymatic method for the preparation of HMW DNA from blood for RFLP studies. *Nucleic Acids Res* 1991;**19**:5444.
24. **Barrett JC**, Fry B, Maller J, *et al*. Haploview: analysis and visualization of LD and haplotype maps. *Bioinformatics* 2005;**21**:263–5.
25. **Chung Y**, Lee SY, Elston RC, *et al*. Odds ratio based multifactor-dimensionality reduction method for detecting gene-gene interactions. *Bioinformatics* 2007;**23**:71–6.
26. **Kannus P**, Jozsa L. Histopathological changes preceding spontaneous rupture of a tendon. A controlled study of 891 patients. *J Bone Joint Surg Am* 1991;**73**:1507–25.
27. **Smith RK**, Birch HL, Goodman S, *et al*. The influence of ageing and exercise on tendon growth and degeneration—hypotheses for the initiation and prevention of strain-induced tendinopathies. *Comp Biochem Physiol A Mol Integr Physiol* 2002;**133**:1039–50.
28. **Dudhia J**, Scott CM, Draper ER, *et al*. Aging enhances a mechanically-induced reduction in tendon strength by an active process involving matrix metalloproteinase activity. *Aging Cell* 2007;**6**:547–56.
29. **Jones GC**, Corps AN, Pennington CJ, *et al*. Expression profiling of metalloproteinases and tissue inhibitors of metalloproteinases in normal and degenerate human achilles tendon. *Arthritis Rheum* 2006;**54**:832–42.
30. **Riley GP**, Curry V, DeGroot J, *et al*. Matrix metalloproteinase activities and their relationship with collagen remodelling in tendon pathology. *Matrix Biol* 2002;**21**:185–95.
31. **Chard MD**, Cawston TE, Riley GP, *et al*. Rotator cuff degeneration and lateral epicondylitis: a comparative histological study. *Ann Rheum Dis* 1994;**53**:30–4.
32. **Pierfitte C**, Royer RJ. Tendon disorders with fluoroquinolones. *Therapie* 1996;**51**:419–20.
33. **Corps AN**, Harrall RL, Curry VA, *et al*. Ciprofloxacin enhances the stimulation of matrix metalloproteinase 3 expression by interleukin-1beta in human tendon-derived cells. A potential mechanism of fluoroquinolone-induced tendinopathy. *Arthritis Rheum* 2002;**46**:3034–40.
34. **Riva A**, Kohane IS. A SNP-centric database for the investigation of the human genome. *BMC Bioinformatics* 2004;**5**:33.
35. **Voet D**, Voet JG, Pratt CW. Fundamentals of biochemistry (upgraded edition). Hoboken, N.J.: Wiley, 2002:77–81.
36. **Becker JW**, Marcy AI, Rokosz LL, *et al*. Stromelysin-1: three-dimensional structure of the inhibited catalytic domain and of the C-truncated proenzyme. *Protein Sci* 1995;**4**:1966–76.
37. **Nagase H**. Activation mechanisms of matrix metalloproteinases. *Biol Chem* 1997;**378**:151–60.
38. **Kerkvliet EH**, Jansen IC, Schoenmaker T, *et al*. Collagen type I, III and V differently modulate synthesis and activation of matrix metalloproteinases by cultured rabbit periosteal fibroblasts. *Matrix Biol* May 2003;**22**:217–27.
39. **Riley G**. The pathogenesis of tendinopathy. A molecular perspective. *Rheumatology* 2004;**43**:131–42.