

## Published in Chromosome Research (2012) DOI : 10.1007/s10577-012-9310-3

---

### Chromomeres revisited

**Herbert C. Macgregor**

School of Biosciences  
University of Exeter  
Exeter EX4 4SB, UK

e-mail [herbert.macgregor@btinternet.com](mailto:herbert.macgregor@btinternet.com)

**Running title:** Chromomeres revisited

**Key words:** lampbrush chromosome, chromomeres, chromatin, transcription

#### Abstract

The history of studies on the chromomeres of lampbrush chromosomes is outlined and evidence for the nature and function of these structures is collected and summarised. Chromomeres and their associated loops on lampbrush chromosomes are not genetic units although in some special cases they consist of specific families of repeated DNA sequences. The emergence of a chromomeric organisation coincides with the onset and intensification of transcription on lampbrush loops. Modern molecular studies have provided evidence that the chromatin of lampbrush chromomeres differs in several important respects from that of condensed metaphase chromosomes. It is in a highly dynamic state that facilitates localised transcription whilst keeping the chromosome safe from structural changes that might impede its orderly progression through meiotic metaphase 1. LBCs are a physically induced phenomenon, facilitated by the selective absence of molecular factors that would interfere with their main transcriptional role. LBC morphology is highly dynamic and driven by transcriptive activity.

#### Abbreviations:

Bp, base pairs

CENP-A, Centromeric protein A

DAPI, 4',6-diamidino-2-phenylindole

LBC, Lampbrush chromosome

H4, Histone H4

H3K4me3, A modified histone H3 that marks transcriptional activation

HMGN High molility group nucleosome binding proteins

HP, Protein involved in heterochromatin formation and gene silencing

SMC, Structural maintenance of chromosome protein

RAD21, A protein involved in chromosome condensation in mitosis

XCAP-D2, A condensin complex with a role in chromosome condensation and segregation

## **In the beginning**

In the autumn of 1958 Mick Callan (figure 1) asked me to make some preparations of the lampbrush chromosomes from a female crested newt, fix them and stain them with leuco-basic fuchsin after a mild treatment with hydrochloric acid – the “Feulgen Reaction”. If the tiny granules- chromomeres - that were distributed along the axes of these chromosomes contained DNA, they should stain pink. It was a tough assignment for a fresh post-grad and it took me 2 weeks accomplish. The chromomeres were tiny: just visible with a carefully adjusted microscope fitted with a 100x flat field oil immersion objective. With a bit of imagination and self persuasion they were pink – just - their contrast made more convincing with a green filter. But yes, they were definitely pink and with some critical controls built in, there could be no reasonable doubt that they contained DNA. For more than half a century these tiny granules and all the many dogmas and ideas surrounding them have bothered me. What are they and how do they fit into the context of life?

## **Historical**

In the third edition of his monumental book E.B.Wilson (1925) cites studies on spermatocyte nuclei of 10 animals from 5 different phyla and defines chromomeres as “*....spireme threads which in some sense or other are serial aggregates which have a perfectly definite organisation and one that differs specifically from chromosome to chromosome and from species to species. Chromomeres are capable not only of growth, definite alignment and division, but also of conjugating two by two and like with like*”.

Twenty nine years later Michael White (1954) says of chromomeres that they are “*....distinctly staining with a definite and species-specific linear pattern*”. He cites observations on meiotic prophase chromosomes and lampbrush chromosomes and concludes that they are “*.....a universal constituent of the chromosomes and each ultimate chromomere corresponds to a single genetic locus*”. Bear in mind that in 1954, lampbrush chromosome technology was in its infancy and White was probably overstepping the evidence that was available at that time.

Then after another 21 years Vlad and Macgregor (1975), on the basis of experimental evidence and in the context of a wide ranging review of everything that had been observed about chromomeres up to 1975, concluded that “*lampbrush chromomeres are not the genetic units they were once supposed to be and their formation must be related to their DNA sequence content*”.

Callan (1986) (figure 1), focussing specifically on lampbrush bivalents, reported that “*.....chromomeric patterns are rarely identical in the two homologues*”, which was surprising and somewhat perplexing at the time, in view of the strikingly regular species-specificity of chromomeric (= band) pattern in polytene chromosomes from dipteran flies.



Figure 1

Professor H.G. (Mick) Callan F.R.S. Photographed in 1965 in his laboratory in the University of St. Andrews, Scotland.

So at the end of the 20<sup>th</sup> Century we have, on the one hand, the long established and well known situation in polytene chromosomes where chromomeres form a regular linear pattern that bears some relationship to the arrangement of genes along the length of a chromosome. On the other hand we have LBCs where there are apparent discrepancies with regard genetic equivalence, with just a hint of a constant pattern that may be complicated on lampbrush chromosomes by widespread transcription and by stretching as a result of the punishment they receive when being isolated by free hand dissection from the germinal vesicle. And then we have spermatocytes, the original source from which chromomeric organisation was first described by Wilson nearly 100 years ago.

The basis of polytene chromomeres is a matter for another day, except to say that the fact that they line up transversely to form bands is unremarkable, since each chromatid is an undisplaced identical endomitotic replica and there are many of them.

Why are spermatocyte pachytene chromosomes “chromomeric”? Or are they? Or maybe they are more like lampbrushes than we think and have some transcriptive business to attend to – a matter on which the sparse existing evidence remains decidedly equivocal.

What I am concentrating on here are the lampbrush chromosomes of animal oocytes which must surely rank amongst the most amazingly beautiful and intricate objects of the entire microscopic world.

### **Some facts about lampbrush chromosomes and their chromomeres**

The very first thing to say about lampbrush chromosomes – and it is something that people who have never seen them have difficulty in grasping – is that the nucleus in which they reside is enormous (figure 2) and the chromosomes themselves are really huge (figure 3). Urodele amphibians, which have provided much of the material for past LBC research, have some of the largest genomes of all organisms. The biggest urodele chromosome, found in a tiny Central American salamander, is nearly 2000 times the size of the 4<sup>th</sup> chromosome of *Drosophila melanogaster*. The situation was discussed by me in 1978 (Macgregor 1978) and redefined by Stan Sessions in 2008.

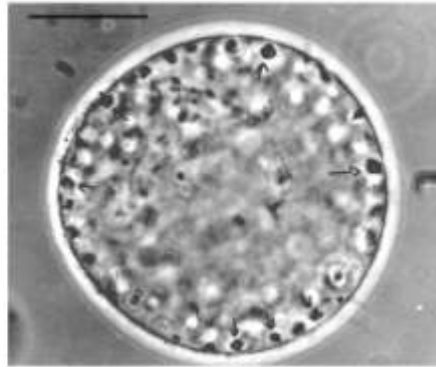


Figure 2

A nucleus freshly isolated by hand from a newt oocyte - a germinal vesicle - and seen here by phase contrast, unfixed and life-like, in a physiologically balanced saline solution. The oocyte from which this nucleus came was 500 micrometers in diameter. The scale on this micograph corresponds to 50 micrometers. The arrows indicate some of the many hundreds of nucleoli that represent the consequences of the massive amplification of ribosomal genes and that contribute to the busy and crowded environment in this germinal vesicle. Most of the inner part of the nucleus is occupied by the 12 lampbrush bivalents,

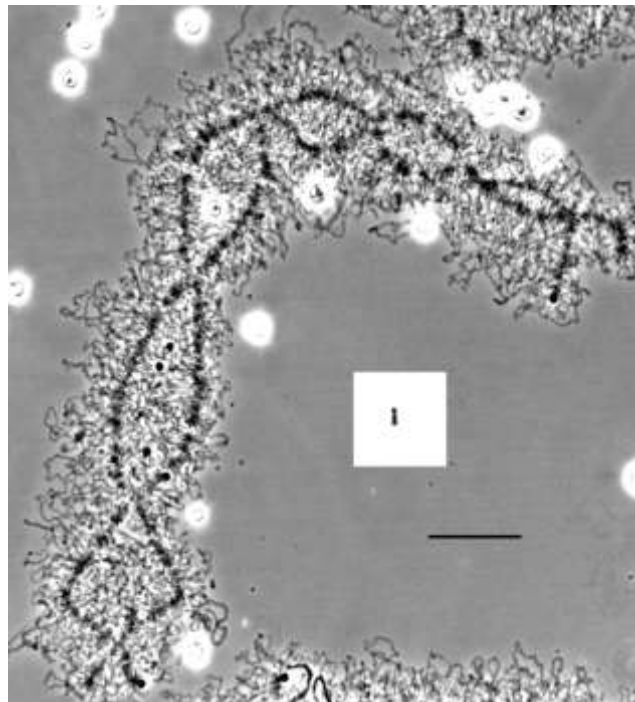
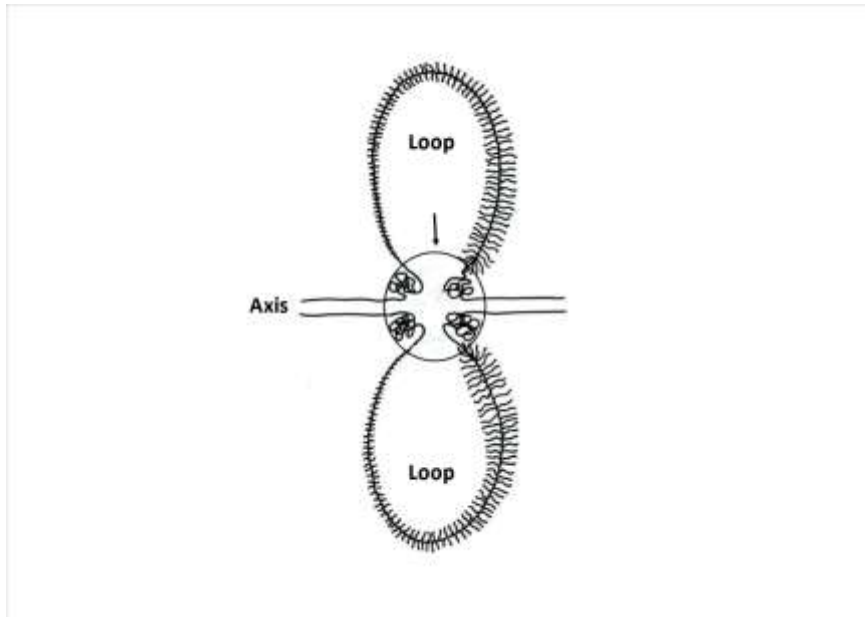


Figure 3

This photograph shows a medium sized lampbrush bivalent freshly isolated from an axolotl (*Ambystoma mexicanum*) oocyte and viewed in its life-like form with phase contrast microscopy. As a comparison, the inset shows **AT THE SAME MAGNIFICATION** a medium sized mitotic metaphase chromosome from an axolotl larva. That the relatively minute volume of chromatin represented by the metaphase chromosome should be so transformed and rearranged as to constitute the DNA axis of a lampbrush chromosome that is nearly a millimetre long and all its lateral loops signifies that something very special must be happening on these amazing chromosomes. (Photograph courtesy of the late H.G.Callan FRS and Dr. Garry Morgan of Nottingham University UK.) The scale bar = 50 micrometers

In the female's gametocytes these big chromosomes go from a compact telophase form at the end of the last oogonial mitosis, become lampbrushy and then contract again to form normal looking first meiotic metaphase bivalents. The vast difference in size between a chromosome when it's a full blown lampbrush (actually visible to the naked eye!) and the same chromosome when it's in metaphase must always be kept in mind when considering any aspect of lampbrush structure and function. The change from one form to the other represents one of Nature's most dramatic supramolecular metamorphoses.

Lampbrush chromosomes are meiotic bivalents, so each half-bivalent (= homologue) consists of two chromatids, making up a structure that is diagrammatically represented in figure 4. The reader can learn all about them, the work that has been on them and the people who did that work from the website <http://www.projects.exeter.ac.uk/lampbrush>.



**Figure 4**

A diagram of the basic organisation of a lampbrush chromosome, showing the two chromatids that form the main axis of the chromosome and their lateral separation to form two loops. The area contained within the circle (arrow) is the chromomere, represented here hypothetically as comprising 4 regions of non-transcribed chromatin, a scheme that is not inconsistent with a range of observations that are outlined later.

The currently accepted model of lampbrush organization (figure 4), emphasises the two chromatid structure of the chromosome, a chromomere that must comprise 4 parts held together in some way without intimate intertwining of the chromatin fibres in each part and sister loops that have similar, though not necessarily identical lengths and the same directions of thickness polarity.

It deserves special mention here, even if it has little to do with chromomeres, that the basis of this model – an interchromomeric fibre consisting of two DNA double helices with loops consisting of just one double helix - was convincingly proved by an experiment carried out by Joe Gall (figure 5) in 1963 that involved just a simple light microscope, a stopwatch and a little bit of elementary mathematics. If you have not already done so, I recommend that you find and read this classical gem of chromosome science (Gall 1963).



Figure 5  
Joseph G Gall (Joe) photographed in 1998

### Lampbrush chromomeres are real.

They occur all along all of the chromosomes and they range in size from barely resolvable to about 1 micron (figure 6). An animal with a haploid genome size 7x that of the human genome (= ca. 21 billion bp) has a total of about 5000 chromomeres in a haploid set of its fully developed lampbrush chromosomes. Chromomeres stain with the Feulgen reaction and with DAPI (figure 7) and look like blobs of chromatin in electron micrographs of sections of fixed and embedded LBCs (Mott and Callan 1975). No surprises! An average lampbrush chromomere from a urodele amphibian contains between 5 and 10 megabases of DNA, bearing in mind that it is derived from two chromatids. Loops have been reckoned to have between 50 and 150 kilobases.

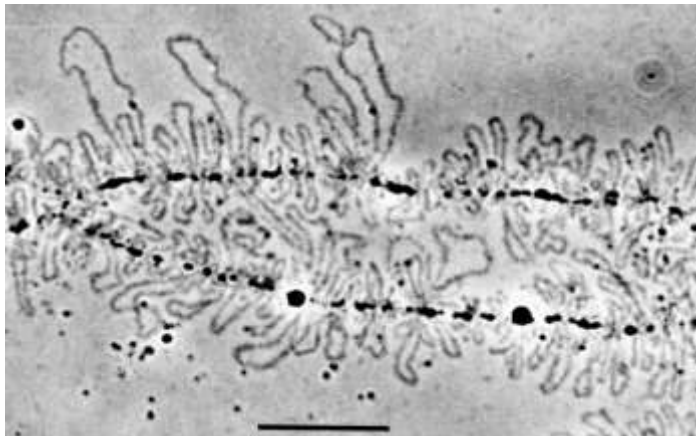


Figure 6

Phase contrast micrograph of part of a lampbrush bivalent that has been isolated in a physiological saline and then centrifuged lightly to flatten all the loops down on the surface of the isolation chamber, so making the chromosome axis and its chromomeres more easily seen. The scale represents 20 micrometers.

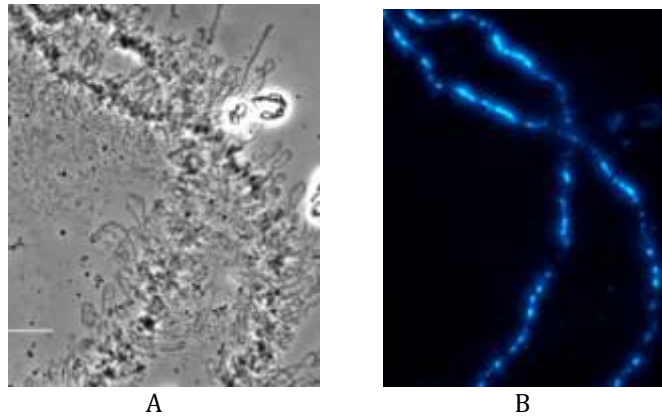


Figure 7

Figure 7A shows part of a freshly isolated lampbrush bivalent from the axolotl (*Ambystoma mexicanum*) photographed in phase contrast. Figure 7B shows the same part of the same bivalent after fixation, staining with DAPI and photographed with a fluorescence microscope. Three matters are noteworthy: (1) the axes of the half-bivalents are clearly defined by their DAPI staining (2) DAPI-stained chromomeres vary widely in size and (3) there is some approximate correspondence between the patterns and distribution of chromomeres on the two half-bivalents. The scale bar represents 20 micrometers. These micrographs were kindly provided by Garry Morgan, University of Nottingham, UK.

According to the classical lampbrush dogma, laid down in the 1960s by two of the modern lampbrush pioneers, Joe Gall and Mick Callan, most chromomeres are resolvable at the light microscope level as discrete objects joined to one another by a very thin interchromomeric fibre and each chromomere has one or several pairs of lampbrush loops springing from it. All absolutely true.

The sizes of chromomeres were said to be related to the lengths of the loops associated with them, which was the basis of the (later discredited) spinning out and retraction hypothesis for lampbrush function (Snow and Callan 1969). The main evidence for this relationship derived from the fact that at the end of the lampbrush phase of meiosis, the chromosomes contract, the chromomeres become fewer and larger and the loops become shorter. But let us be clear about one thing, no objective study has ever been carried out to test this relationship. It may not be true and our thoughts about LBC make-up are no longer constrained by it.

### Is there a chromomeric pattern?

In considering whether the chromomeres of LBCs do conform to a locus-specific pattern I will cite just 3 lines of evidence..

First, the W chromosome of a chicken (*Gallus domesticus*) consists of a small number of large chromomeres that form a distinct pattern (Solovei *et al.* 1993, 1998). Secondly, the very beautiful and exceedingly accurate drawings of LBCs that illustrate the Callan and Lloyd Royal Society paper (Callan and Lloyd 1960) about the LBCs of crested newts show, in some places, an almost precise correspondence between the chromomere pattern on homologous half-bivalents but in general, the chromomeric pattern of homologous half-bivalents does not match. Thirdly, In LBCs that are past the stage of maximum lampbrush development, the arrangement of chromomeres is definitely not identical on homologous half-bivalents.

From these observations I conclude that if we were able to resolve and map the arrangement of chromomeres on LBCs in their truly life-like condition and at the stage of the maximum development of their loops - and hence the transcriptive activity in the germinal vesicle - a regular, chromosome- and species-specific pattern might be evident. But this pattern is usually obscure and whether or not it ever exists is not crucial to an understanding of LBCs.

### Chromomeres and genes

What about chromomeres and genes? The immediate response to this must always be Mick Callan's clever observation on certain loci on the LBCs of crested newts where there are very large and



conspicuous loops. In 1956, which is the veritable early dawn of modern lampbrushology, Callan & Lloyd (1956) noticed that these loops could be present or absent in different homozygous or heterozygous combinations. The pattern of presence or absence was the same in every oocyte from any one individual but varied from newt to newt. Later on, and in time for publication in his historic paper (Callan and Lloyd 1960), he showed that if presence or absence for these marker loops were treated as Mendelian characters, they assorted and combined within a population according to Hardy-Weinberg rules. So some "landmark loops" do bear some relationship to genes in the classical sense. Remember that here we are talking not about chromomeres but about distinctive loops (= transcription complexes) that arise from chromomeres.

So is the loop AND its chromomere to be regarded as a genetic unit? Probably not. In the first place, chromomeres that have several pairs of loops associated with them are not uncommon. In bird LBCs it has been observed that some chromomeres have lots of micro-loops associated with them (Gaginskaya and Tsvetkov 1988, Alla Krasikova unpublished observations). There are, moreover, many examples of loops that consist of several transcription units arranged in tandem springing from a single chromomere (Scheer *et al.* 1976) These observations would seem to prove that the DNA of chromomeres can be functionally, if not genetically heterogeneous.

Then there are the observations on chromomere number. Two related species in the same genus, identical karyotypes in terms of relative sizes and shapes of the chromosomes, species A has a genome twice as large as species B. The LBCs of A are twice as long as those of B, yet at corresponding stages of oocyte development and LBC activity, the distribution density of chromomeres is the same on the LBCs of both. So, unquestionably, the LBCs of A have many more chromomeres than those of B (Vlad and Macgregor 1975).

No, the chromomeres of lampbrush chromosomes are not genetic units..

But are they structural units whose existence owes something to the physical and molecular make-up of the chromosomes, perhaps evolved in connection with the advantage of keeping two chromatids tightly associated and in strict register with one another during the intricate processes of meiotic synapsis, crossing over and segregation? Very possibly, in principle, but again the word "unit" does cause some problems.

### **The physical properties of chromomeres**

When do chromomeres first appear? We don't know. Whilst there is plenty of information about transcription, there is almost none about chromomeres. LBCs from newt oocytes between 400 and 1000um diameter have a chromomeric axis (Mott and Callan, 1975). Oocytes in this size have fully formed LBCs. There are well developed LBCs in *Xenopus* oocytes of 300 - 450um diameter (Hill and Macgregor, 1980). Lampbrush type transcription, however, starts much earlier in oocytes of less than 100 um diameter in *Xenopus*, from which it is exceedingly difficult to isolate by hand anything that resembles a lampbrush chromosome or see any evidence of such a thing. Are transcription and the emergence of a chromomeric organisation coincidental?

We know what the chromosomes look like in pachytene oocytes from *Xenopus* and we know what they look like in early diplotene oocytes from *Triturus* as they emerge from the pachytene stage and the germinal vesicle starts to enlarge (see Macgregor 1972). In both cases they are short, condensed and loopless. What happens in the transformation from that to the fully developed lampbrush form is a steady build up in the number of transcription units and the degree to which they are loaded with RNA polymerase. So probably yes: the start of transcription and the break up of condensed axis into a chromomeric arrangement go hand in hand; and both happen quite quickly. But the chromosome is never at any stage allowed to become fully decondensed.

Most of the older generation of lampbrushers have at one time or another looked at sections of chromomeres with a transmission electron microscope but only Margaret Mott and Mick Callan (Mott and Callan 1975) ever published what they found - and it's rather interesting. They say that "*Most of the chromomeres in thin section show a characteristic basket-work texture, the densely staining material, presumably skeins of DNP fibrils, being some 30 nm wide and separated by spaces of some 50 nm wide ..... As well as the material of basket work texture, some chromomeres contain regions where the stained material*



is much more densely packed ..... In 2 mm oocytes (which are nearing the end of the LBC phase), to our amazement, we failed to find any trace of objects having a basket work texture. However, we were able to find objects having the densely packed fibrillar texture, reminiscent of the exceptional dense portions of chromomeres in spread preparations (of earlier oocytes)". In my view, the significance of these observations is that the chromomeres of transcriptionally active LBCs have a different, looser, texture than that of condensed chromatin, while in a few chromomeres there may be small localised regions that have remained fully condensed or signify the start of full condensation in the run-up to 1<sup>st</sup> meiotic metaphase. In a moment of perhaps misplaced modesty, Mott and Callan remark that the "basket-work" texture seen in their preparations is "*evidently a preparative artefact*". Yet their methods were careful, critical and were, at the time, likely to achieve the best possible structural preservation of chromosomal DNP. There is lots of evidence to suggest that what they saw was a true indication that there are indeed two physical states of chromatin whose existence is related to localised transcriptive activity.

Another, highly subjective matter may be relevant here. Those who have seen a DAPI stained LBC and its metaphase counterpart will have absolutely no shadow of doubt that the total DAPI fluorescence of the LBC, confined to the bright little chromomeres, adds up to much more than that of the metaphase chromosome. Somebody should measure it sometime!

Now before anyone accuses me of sacrilege or senility, let me proclaim loudly that I do not intend to imply that a lampbrush chromatid has more DNA than its metaphase counterpart, but I would suggest that these subjective assertions may offer a clue to a special arrangement of LBC chromatin which results in its looser fine structure, an expanded chromomere volume and perhaps a greater affinity for or accessibility to DAPI.

One of the earliest and most significant observations on LBCs was the consequence of stretching the chromosomes during the very delicate free-hand process of isolating them from the oocyte nucleus. It is, in fact, extremely difficult to make a preparation of a set of LBCs without stretching or damaging them in one way or another; but it can be done. Upon being stretched longitudinally (and Callan did this deliberately and very skilfully in 1955 with a micromanipulator), the weakest point proves to be a transverse plane across the chromomere such that the loops attached to the chromomere come to span the gap between the two clearly discernible half-chromomeres (figures 8 and 9/2). Curiously enough, Callan's very first description of this was when he was looking at the LBCs of the European marbled newt and also of an isopod, a mollusc and an elasmobranch (Callan 1957). So there would seem to be a plane of weakness across a chromomere in which two bundles of compacted chromatin are not intertwined or inseparable. To which I will add the aside that it suggests that transcription starts before the chromomere is formed, since the loop defines the position of the chromomere.

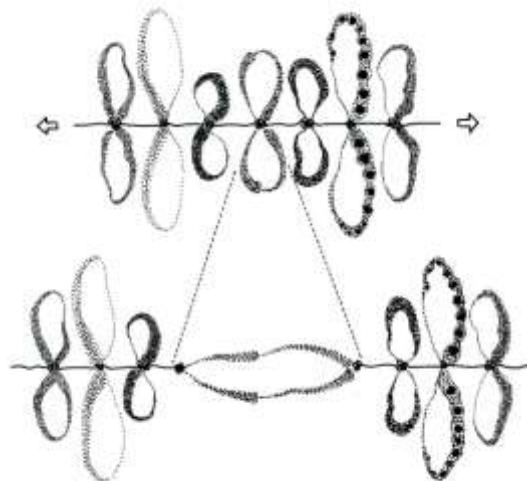


Figure 8

Figure 8. The upper of the two drawings shows a portion of a lampbrush chromosome that is unstretched. The lower drawing shows the same region after being stretched longitudinally. The chromomere of the middle of the 7 loop pairs shown has split transversely and its two loops bridge the gap between the two halves of the chromomere. The loops

forming the double bridge consist of two tandemly arranged transcription units with similar, left to right, polarity of transcription.

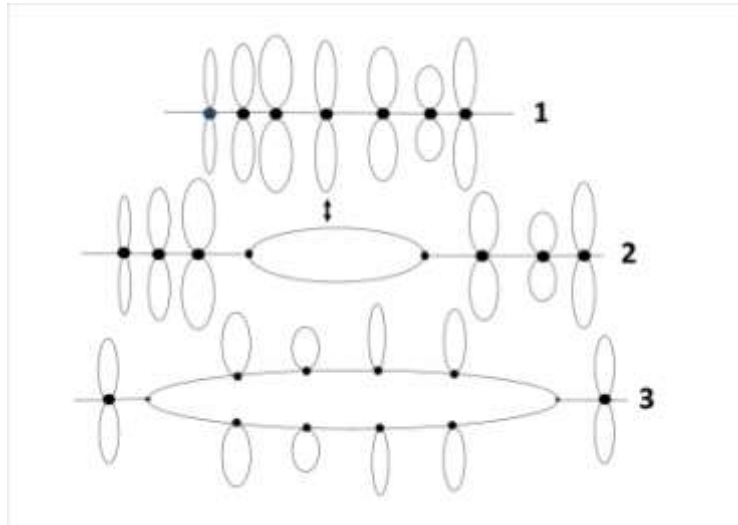


Figure 9

1. Normal lampbrush organisation, chromomeres with paired loops
2. Double loop bridge formed by stretching the chromosome
3. Double axis region with chromomeres bearing single loops

What's more, it seems likely that there is a longitudinal plane of weakness as well as a transverse one. In specific locations along the LBCs of most of the vertebrates in which they have been studied, the chromosome axis is double. Each chromatid that makes up a half-bivalent has chromomeres that have just one loop associated with them (figure 9/3). The more conspicuous of these "double axis regions" are always in the same place and some of them feature in the LBC maps in Callan & Lloyd's 1960 paper on the LBCs of crested newts. They represent places where the half-chromomeres are not fused with one another, even though their counterparts are just a short distance away. A conspicuous feature of Lydia Lloyd's meticulous drawings of double axis regions (Callan and Lloyd 1960) is that the pattern of chromomeres and loops on each half of a double axis region do correspond exactly. Does this perhaps signify a precise synchrony of the transcriptional events on the two identical chromatids, a synchrony which is not evident for homologous regions of two half-bivalents?

The most amazing example of "half LBCs" that have chromomeres with just one loop are the LBCs that form when sperm nuclei from frogs or from humans are injected into amphibian germinal vesicles, visualised in a series of landmark experiments from the Gall laboratory in 1998 (Gall and Murphy 1998, see also <http://projects.exeter.ac.uk/lampbrush/pics.htm> ). Sperm chromosomes, of course, consist of just one chromatid.

All these simple light microscope observations could perhaps be explained on the basis of there being certain specific factors that differentiate the chromatin of these discrete objects that we call chromomeres. Such factors would have to be fine tuned to differentiate between neighbouring chromomeres, hence the beads on a string appearance of an LBC and between the chromatin of the two "sides" of the chromomere from which the loop ends emerge, hence the existence of double bridges, and differentiate between the chromatin of identical chromatids, hence the existence of double axis regions. Hence my schematic representation of the 4-partite chromomere in figure 4.

All rather vaguely hypothetical, you will say! Well now it's time to enter the second great era of lampbrushology and look at the molecular and biophysical properties of the loop/chromomere complex.

### The avian W chromosome

It was during the 1980s in Soviet Russia that Elena Gaginskaya (Figure 10) started to look at the lampbrush chromosomes of birds and her extraordinary skill and initiative in working with this technically challenging system generated a whole new perspective for lampbrushology (Gaginskaya *et al.*

2009). To begin with, she looked at the sex chromosomes because only in birds is it possible to see both members of a heteromorphic sex chromosome pair, Z and W, in the lampbrush form.



Figure 10

Elena Gaginskaya, photographed in 2000

The chicken Z/W lampbrush chromosome pair looks like a univalent (Solovei *et al.* 1993, 1998, Mizuno and Macgregor 1998). Most of it has a typical lampbrush organisation but the terminal one fifth consists of a relatively thick axis carrying only a very few small lateral loops (figure 11). The region with normal lampbrush appearance is the Z chromosome; the short thick loopless region is the W (indicated by an arrow in figure 11). The point at which these two chromosomes are joined by a single chiasma is usually marked by two adjacent pairs of large conspicuous loops, one belonging to the end of the W and the other to the end of the Z.

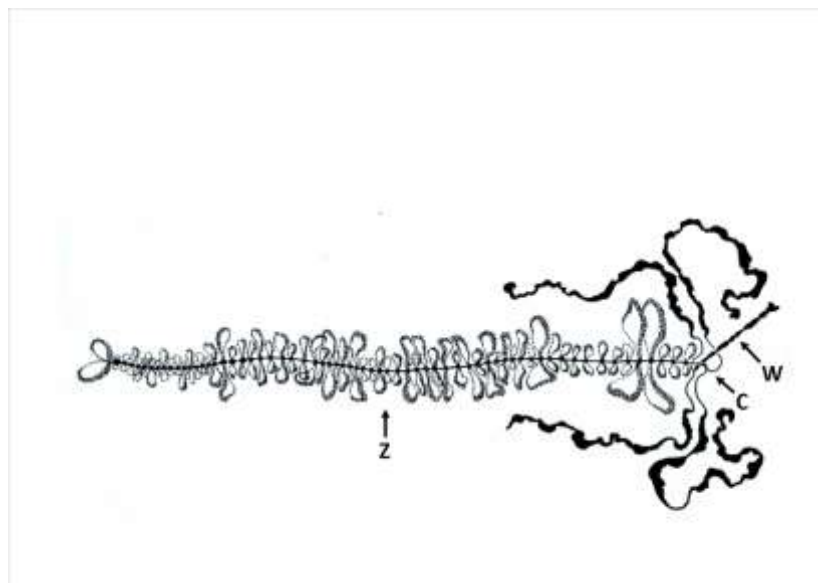


Figure 11

The ZW lampbrush bivalent of the chicken. The short condensed W chromosome is marked with an arrow (W). The two pairs of large conspicuous loops, one of them open-ended, mark the site of the terminal chiasma (C) that joins the Z and W together to form a bivalent.

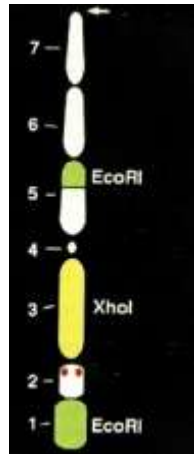


Figure 12

Arrangement of the 7 chromomeres of the chicken W chromosome. The arrow at the top indicates the chiasmate end of the chromosome that is attached to the Z. Chromomere 1 is especially bright when stained with DAPI and is absent in some individuals. *EcoRI* and *XhoI* indicate the chromomeres that are made up entirely, if not exclusively, of the corresponding repeated sequences. Diagram extracted from Ogawa *et al.* (1997).

The chicken W-LBC is 10 – 15 micrometers long. Its axis consists of 6 or 7 densely packed chromomeres that are larger and brighter (after staining with DAPI) than any of the chromomeres on the Z chromosome. The arrangement of chromomeres on the W is absolutely consistent (figure 12) and each chromomere is individually recognisable. W chromosomes with 7 chromomeres have a very bright chromomere at the extreme free end of the chromosome; this is missing in Ws with 6 chromomeres. It is impossible to say that the W chromosome is loopless. It has a very few conspicuous loops and varies in this respect from one species of bird to another. What we don't know is if it has any little loops that cannot be seen in the light microscope – but I would like to think that it doesn't.

The W sex chromosome heterochromatin is partly made up of two repetitive DNA sequence families – the *EcoRI* and *XhoI*. Both families consist of tandem repeats of a basic unit of about 21 bp. These two families are not intermingled with one another. The *XhoI* family consists of about 30,000 repeats; the *EcoRI* family varies between 700 and 4000 repeats (Solovei *et al.* 1998, Mizuno and Macgregor 1998).

*In situ* hybridisation experiments have shown with astonishing clarity that the *XhoI* repeat family hybridizes exclusively to small chromomere number 3 on the W chromosome and the *EcoRI* family hybridises exclusively to the proximal part of chromomere 5 and the distal part of chromomere 1 (Solovei *et al.* 1998). These are the only examples to date of single families of repeated DNA sequences being localised in specific chromomeres.

### Centromeres and chromomeres

In places where we would expect to find lampbrush centromeres there is usually a small loopless granule on or slightly to the side of the chromosome axis. I am deliberately avoiding the word chromomere here because the nature of this centromere granule remains something of an enigma. It looks featureless in scanning electron micrographs of fixed and critical point dried LBCs. In transmission electron micrographs of thin sections of plastic embedded LBCs it again appears as a featureless homogeneous mass of what seems like compact chromatin. As expected, there are no kinetochores associated with these “centro-chromomeres”. No surprises – and no thrills – here.

A group of Japanese scientists recently identified CENP-A interacting DNA sequences in chicken genome (Shang *et al.*, 2010), amongst which are several chromosome-specific centromere repeats (Cen1, Cen2, Cen3, Cen4, Cen7, Cen8 and Cen11). These repeats have a clear function in kinetochore formation. Krasikova and her co-workers (see Krasikova and Gaginskaya 2010 and Krasikova *et al.* Chromosome Research, in press) have also identified tandem DNA repeats that interact with CENP-A in the vicinity of the centromere of bird chromosomes in somatic cells. Neocentromeres and immature centromeres do not contain these satellite repeats, but do have some non-tandemly repetitive DNA that interacts with CENP-

A. During the lampbrush stage, CENP-A protein is not detectable at centromeres of lampbrush chromosomes but it may be reasonable to define the position of a lampbrush centromere by the presence of centromere repeats that are known to interact with CENP-A at other stages of cell cycle and in other tissues (see Krasikova *et al.* Chromosome Research, in press).

The situation becomes more complex and intriguing when protein bodies enter the discussion. The Protein Body (PB), first described by Elena Gaginskaya and her colleagues in St. Petersburg (Gaginskaya 1972, Saifitdinova *et al.* 2003, Krasikova *et al.* 2005), is a locus-specific marker that shows highly conserved synteny at centromere regions of lampbrush chromosomes in all birds studied so far and several amphibian species. It can be unequivocally identified on the basis of its distinctive appearance and by marker components, including subunits of the cohesin complex. The exact role of the PB remains unknown although several reasonable suggestions have been offered.

As with the centromere PBs of birds, the centromere granule of amphibian LBCs often sits between two large chromomeres in centromere regions (figure 13). In some species of urodele the lampbrush centromeres are flanked by dense bars of loopless chromatin. These were first described by Callan and Lloyd in 1960 and an example of one of Lloyd's beautiful and highly accurate camera-lucida drawings is shown in figure 11 along with a typical example of this kind of situation in phase contrast (figure 14)

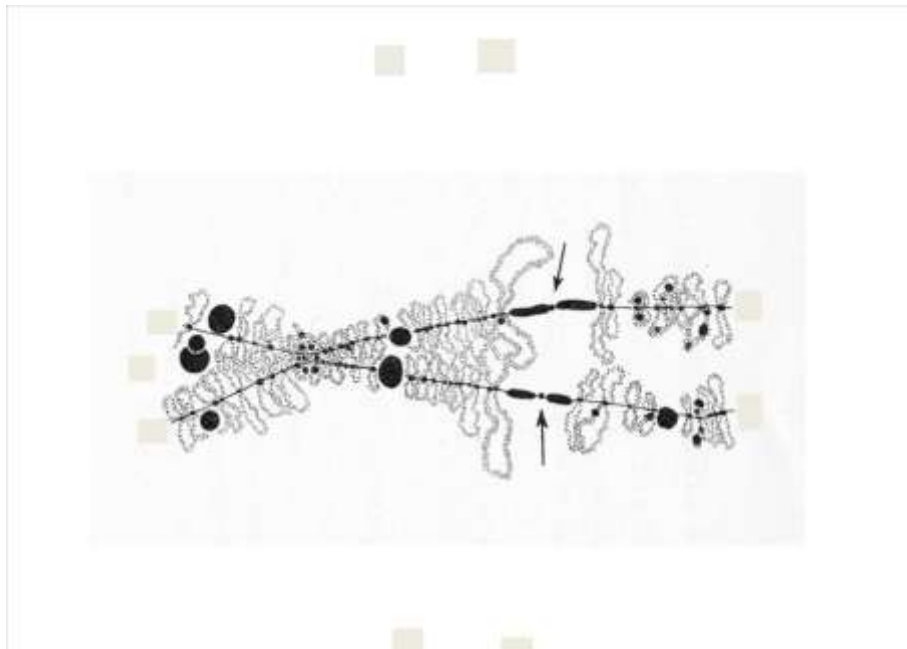


Figure 13

The middle section of one of the lampbrush bivalents from a crested newt, *Triturus cristatus karelinii* showing the centromere granule (arrows) flanked by two large bars of dense loopless chromatin. Drawing by Lydia Lloyd.

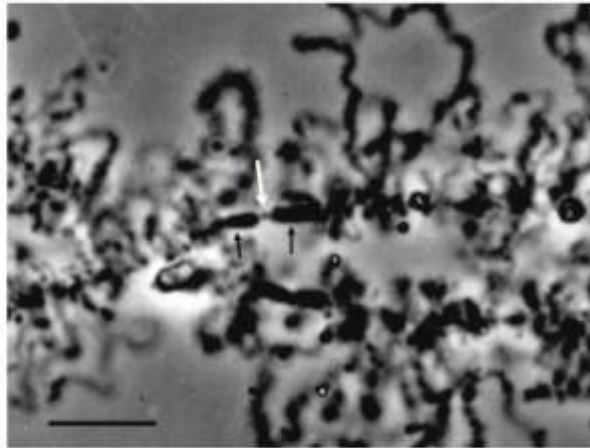


Figure 14

Phase contrast micrograph of the centromere region of a lampbrush bivalent from a newt showing the “centromere granule” (large white arrow) flanked by two dense bars of pericentromeric heterochromatin (smaller black arrows). The scale bar represents 20 micrometers.

The DNA in these “centromere bars” consists almost entirely of two highly repeated short DNA sequences. One of them is 33 bp long, makes up nearly 10% of the entire genome and is repeated about 8 million times. The other is 68 bp long, is not a simple dimer of the first and is repeated about 4 million times. Both are detectable exclusively in the pericentromeric heterochromatin of all chromosomes and in the centromere bars of all lampbrushes (Baldwin and Macgregor 1985). So here again, we have a compact “mega-chromomere” that consists largely, if not entirely, of one or a very few DNA sequence families. We do not know if these DNA sequences have any affinity for CENPs but it is undoubtedly something that should be investigated.

According to Gaginskaya and Krasikova and their colleagues the thing that we call the “centromere granule” in amphibians should be a PB (Gaginskaya *et al.* 2009, Krasikova and Gaginskaya 2010). FISH-mapping of an RrS1 repeat on LBCs of green frogs (Rr = *Rana* (now *Pelophylax*) *ridibundus*) shows that this repeat localizes in two objects that surround the “centromere granule”. Moreover, after immunofluorescent staining with antibodies against histone modifications typical for heterochromatin (histone H3 K27diMe), no signal can be detected in the “centromere granules” (see Krasikova *et al.* Chromosome Research in press).

I suggest that we can conclude from all these observations that somewhere in the centromere regions of LBCs there are CENP interacting DNA sequences that are not condensed into the form of a visible chromomere, that there are nearby some DNA sequences that play a role in the formation of the PB and that certain components of the PB have an important role in the behaviour of the centromeric region in relation to kinetochore formation and sister and/or homologous chromatid cohesion. That’s probably about as far as we can go at the moment but at least in the context of this essay, we can say that there seems to be no evidence for a lampbrush, centromeric DNA-containing chromomere. Tantalisingly curious because, although centromeres are an irrelevance during the lampbrush stage, they and all their complex machinery will suddenly become very important indeed as 1<sup>st</sup> meiotic metaphase approaches.

## Telomeres

The ends of lampbrush chromosomes were even less interesting than their centromeres until the Russian lampbrushologists got to work on birds. Callan and Lloyd refrain from mentioning telomeres in their 1960 paper and cautiously represent them in some of their otherwise meticulously detailed drawings as tiny loopless terminal dots.

So once again, the most telling observations came from birds. In most of these, LBCs end in a terminal chromomere with a pair of loops (Solovei *et al.* 1994, 1995) and quite often the telomere loops are open ended, the loop having one insertion into the chromomere while the other end hangs free (figures 15 and 16). Telomeric loops in chicken usually consist of two transcription units the most terminal of which is 0.5 – 15 micrometers long and consists entirely of the telomeric sequence TTAGGG. Transcription is from the C-rich strand and proceeds outwards towards the open end of the loop. So here, the chromosome ends at the end of a transcription unit, not at a chromomere. But does the fact that occasionally the telomere is stitched back onto main body of the chromosome, as in the upper half bivalent on figure 15, suggest that that the chromosome may sometimes end in some non-transcribed, non-telomeric DNA sequences that are disposed to remain loosely bound to a small mass of compacted sub-terminal chromatin – a chromomere?

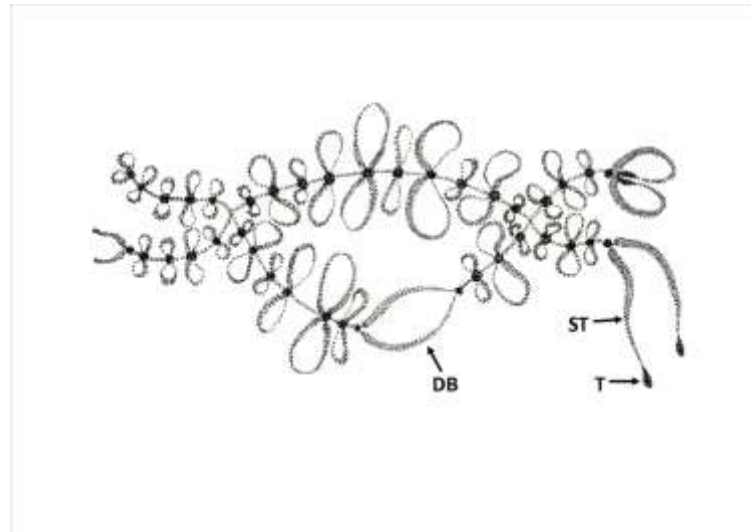


Figure 15

Drawing of part of a lampbrush bivalent from a chicken showing the large terminal loops at the right hand end of each of the two half-bivalents. In the upper one the loops are attached to the chromosome at both ends. In the lower one the terminal loops hang free and show two transcription units, the inner of which (ST) has a distal-proximal polarity and short outer or terminal transcription unit (T) has a proximal-distal polarity. The lower of the two half bivalents shows a double bridge (DB).

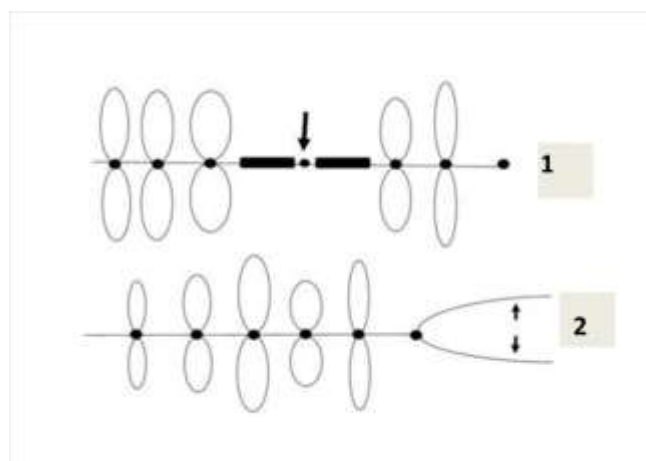


Figure 16

1. Loopless "chromomere" marking the position of the centromere (arrow), with chromatin bars
2. Avian LBC with typical open-ended telomeric loop



## Molecules and all that

To proceed any further we have ask questions that can only be answered through the use of modern molecular probes and here are some answers.

Somatic Histone H1, which is implicated in the formation of higher order chromatin structures and associated with transcription repression, is absent from LBCs in yolky oocytes where transcription is at its maximum level but only just detectable in the small, transparent pre-vitellogenic oocytes where transcription is not yet quite up to speed (Hock *et al.* 1993). Not entirely unexpected!

Cohesin is associated with the axis but not the loops and shows a high mobility between nucleoplasm and the chromosome (Austin *et al.* 2009, Krasikova *et al.*, 2005). A most revealing observation!

SMC3 (a component of the multimeric cohesin complex that holds sister chromatids together) and hRAD21 (a nuclear phospho-protein with a role in sister chromatid cohesion) are present at high levels in the chromomeres (Austin *et al.* 2009). Good, since if they were not there, we would have to wonder what held chromomeres together at all!

Condensin component XCAP-D2 is present at high levels in the chromomeres (Beenders *et al.* 2003).

Heterochromatin protein HP1 $\beta$  accumulates in chromomeres with a high concentration of tandem repeats (Krasikova *et al.* 2009).

5-methylcytosine is located in transcriptionally inactive chromatin in the lampbrush chromosome axis and in the untranscribed DNP-spacers of some loops (Angelier *et al.* 1986).

Trimethylation of histone H3 at lysine 27 (H3K27me3) is typical for all chromomeres, being abundant in the regions of "constitutive" heterochromatin (Krasikova *et al.* 2009).

Non-repressive modification H3K4me3 is associated with the transcription units on laterally projecting loops (Krasikova *et al.* 2009).

Histone H4 is hyperacetylated in the regions of attachment of loops to chromomeres (Sommerville *et al.* 1993) which may signify a loosening of the chromatin in those places, making it more accessible to transcriptional proteins, and there are acetylated histones at particular points ("nodes") in lateral loops, which have been interpreted as likely regions of incompletely decondensed chromatin (Gaginskaya *et al.* 2009).

The embryonic histone H1M variant (also known as B4), another chromatin modifying protein is absent from LBCs (Korner *et al.* 2003) - satisfyingly so, since its presence would be inconsistent with other molecular information and would complicate matters considerably; but unlike somatic H1, it is a prominent component of the non-chromatinised, maternal store of histones in the oocyte.

Other interesting LBC absentees are the architectural chromatin proteins, HMGN (Korner *et al.* 2003).

Injection of H1 into oocytes shuts down transcription and causes loop retraction and chromosome shortening (Hock *et al.* 1993). A helpful observation!

DNA topoisomerase II, a major component of the scaffold of metaphase chromosomes, is absent from lampbrush chromatin but present in axial granules (categorised as chromomere associated structures) (Hock *et al.* 1996, Krasikova *et al.* 2004). Again, hardly surprising, although its presence in axial granules remains unexplained.

A final point about lampbrush chromatin that I think will become increasingly important is the suggestion from some recent work of John Sommerville's laboratory that LBC-associated histones are continually being exchanged with free histones, further indication of the highly dynamic chromatin environment in lampbrush stage oocytes (Stewart *et al.* 2006).

## Conclusions

For a double bridge to form the two chromatids must have remained in register with one another since the pre-meiotic replication – not surprising – and the chromatin must be sufficiently loose as to allow it to part into two masses to which the ends of the loop are attached. If it were compacted, the tension that would normally produce a DB break would probably break the interchromomeric fibril. Herein may lie a selective advantage of absence of H1 and SMC2.

DB breaks probably only happen where there is a very long loop that may represent more than the average proportion of loop/chromomere DNA. So the question of how the 4 segments of the chromomere are kept so effectively apart actually only applies to situations where a large transcription unit (or contiguous series of units) comes from a small chromomere. They're not kept apart; they just never get mixed up – rather like the hypothetical arrangement depicted in figure 4.

Some chromomeres have lots of loops, including micro-loops that are not discernible with the light microscope (Gaginskaya *et al.* 1988 and Krasikova unpublished observations). So the chromomere/loop pair principle that dates back more than 60 years is no longer so important. Chromomeric chromatin is where there's no transcription; if it's not transcribing it condenses loosely to form what we see and call a chromomere.

Despite the reasonable assumption that chromomere pattern might be inherently regular, as in polytene chromosomes, in LBCs it is so dynamic that the pattern is rarely evident.

To his great credit, Callan's 30 year old (Callan1982) explanation is consistent with all the observed facts and modern data.

*"When neighbouring transcription units of LBCs lie far enough apart, the untranscribed intervening regions condense into chromomeric DNP, and multiple pairs of loops will extend from aggregate chromomeres provided that their RNP transcripts are not particularly bulky. However, when the transcripts at the termini of transcription reach a critical bulk, they disrupt such aggregates of DNP into smaller chromomeres with which fewer or single loop pairs are associated, and such chromomeres are forced to maintain their continuity with one another by extending lengths of untranscribed DNP, the interchromomeric strands, until transcription shuts off, when recompaction occurs leading up to meiotic metaphase".*

In other words, LBCs are a physically induced phenomenon, facilitated by the selective absence of molecular factors that would interfere with their main transcriptional role. LBC morphology is highly dynamic and driven by transcriptive activity.

The key to the whole situation is the incomplete compaction and dynamic nature of lampbrush chromatin. This not only facilitates transcription but keeps the chromosome safe from changes that might impede its orderly progression through meiotic metaphase 1 – arguably the most important event in the entire life of an organism. The physical problems that would ensue in the closing stages of meiotic prophase if the chromosomes had been allowed to decondense completely after synapsis and crossing over are unimaginable! For reasons that, amazingly, we don't yet fully understand, transcription has to take place at thousands of loci during an extended diplotene in the female gametes of most animals except mammals and lampbrush chromosomes represent a mechanism that has evolved to ensure that this transcription can happen without compromising the success of meiosis.

It's all really quite simple and the evolutionary sequence is plain to see. Half a century later, my mind is at rest!

## REFERENCES

Angelier N, Bonnanfant-Jais ML, Moreau N, Gounon P and Lavaud A (1986) DNA methylation and RNA transcriptional activity in amphibian lampbrush chromosomes. *Chromosoma* **94**, 169-182.

Austin C, Novikova N *et al.* (2009). Lampbrush chromosomes enable study of cohesin dynamics. *Chromosome Research* **17**: 165-184.

Baldwin L and Macgregor HC (1985) Centromeric satellite DNA in the newt *Triturus cristatus karelinii* and related species: its distribution and transcription on lampbrush chromosomes. *Chromosoma* **92**: 100-107.

Beenders B, Watrin E, Legagneux V, *et al.* (2003) Distribution of XCAP-E and XCAP-D2 in the *Xenopus* oocyte nucleus. *Chromosome Research* **11**: 549-564.

Callan HG (1957) The lampbrush chromosomes of *Sepia officinalis* L., *Anilocra physodes* L. and *Scyllium catulus* Cuv. and their structural relationship to the lampbrush chromosomes of Amphibia. *Pubbl Stn zool Napoli* **29**: 329-346.

Callan HG (1982) Lampbrush chromosomes. *Proc R Soc London Ser B* **214**: 417-448.

Callan H G (1986) Lampbrush Chromosomes. Springer-Verlag, Berlin, Heidelberg, New York and Tokyo.

Callan HG and Lloyd L (1956) Visual demonstration of allelic differences within cell nuclei. *Nature* **178**: 355-357.

Callan HG and Lloyd L (1960) Lampbrush chromosomes of crested newts *Triturus cristatus* (Laurenti). *Philos Trans R Soc London Ser B* **243**: 135-219.

Gaginskaya ER (1972) The nuclear structures in oocytes of adult birds. II. Protein bodies and the karyosphere. *Tsitologiia* **14**: 568-577

Gaginskaya E R, Tsvetkov A G (1988) Electron microscopy research on the chromatin structure of dispersed lampbrush chromosomes in the hen. *Tsitologia* **30**: 142-150.

Gaginskaya E, Kulikova T, Krasikova A. (2009) Avian lampbrush chromosomes – a powerful tool for the exploration of gene expression. *Cytogenetic and Genome Research* **124**. 251 – 267.

Gall J G (1963) Kinetics of deoxyribonuclease action on chromosomes. *Nature* **198**: 36-38.

Gall J G and Murphy C (1998) Assembly of lampbrush chromosomes from sperm chromatin. *Mol Biol Cell* **9**: 733-747.

Hill R S and Macgregor H C (1980) The development of lampbrush chromosome-type transcription in early diplotene oocytes of *Xenopus laevis*: an electron microscope analysis. *J Cell Sci* **44**: 87-101.

Hock R, Moorman A, Fischer D, Scheer U. (1993). Absence of somatic histone H1 in oocytes and preblastula embryos of *Xenopus laevis*. *Dev Biol* **158**: 510-522.

Hock, R, Carl M, *et al.* (1996). A monoclonal antibody against DNA topoisomerase II labels the axial granules of *Pleurodeles* lampbrush chromosomes. *Chromosoma* **104**: 358-366.

Korner U, Bustin M, Scheer U, Hock R (2003). Developmental role of HMGN proteins in *Xenopus laevis*. *Mechanisms of Development* **120**: 1177-1192.

Krasikova A, Kulikova T, Saifitdinova A, Derjusheva S and Gaginskaya E (2004) Centromeric protein bodies on avian lampbrush chromosomes contain a protein detectable with an antibody against DNA topoisomerase II. *Chromosoma* **113**: 316-323.

Krasikova A, Kulikova T and Saifitdinova A (2005) Cohesion proteins are present in centromere protein bodies associated with avian lampbrush chromosomes. *Chromosome Research* **1**: 675 – 685.

Krasikova A, Daks A, Zlotina A and Gaginskaya E (2009) Polymorphic heterochromatic segments in Japanese quail microchromosomes. *Cytogenetic and Genome Research* **126**: 148-155.

Krasikova A and Gaginskaya E (2010) Organization of centromere regions of chromosomes in the lampbrush phase. *Tsitologia* **52(7)**: 515-33.

- Macgregor H C (1972) The nucleolus and its genes in amphibian oogenesis. *Biol. Rev.* **47**: 177 – 210
- Macgregor H C (1978) Trends in the evolution of very large chromosomes. *Proc. Roy. Soc. London* **B283**: 309-318.
- Mizuno S and Macgregor HC (1998) The ZW lampbrush chromosomes of birds: a unique opportunity to look at the molecular cytogenetics of sex chromosomes. *Cytogenet Cell Genet* **80**: 149-157.
- Mott M R and Callan H G (1975) An electron-microscope study of the lampbrush chromosomes of the newt *Triturus cristatus*. *J Cell Sci* **17**: 241-261.
- Ogawa A, Solovei I, Hutchison N, Saitoh Y, Ikeda J-E, Macgregor H and Mizuno S (1997) Molecular characterization and cytological mapping of a non-repetitive DNA sequence region from the W chromosome of chicken and its use as a universal probe for sexing Carinatae birds. *Chromosome Research* **5**: 93 – 101.
- Saifitdinova A, Derjusheva S, Krasikova A, Gaginskaya E (2003) Lampbrush chromosomes of the chaffinch (*Fringilla coelebs* L.). *Chromosome Research* **11**: 99-113.
- Sessions S K (2008) Evolutionary cytogenetics in salamanders. *Chromosome Research* **16**: 183 – 201.
- Scheer U, Franke W, Trendelenburg M F and Spring H (1976) Classification of loops of lampbrush chromosomes according to the arrangement of transcriptional complexes. *J Cell Sci* **22**: 503-519.
- Shang Wei-Hao, Hori Tetsuya, Toyoda Atsushi, *et al.* (2010) Chickens possess centromeres with both extended tandem repeats and short non-tandem-repetitive sequences. *Genome Research* **9** : 1219-1228.
- Solovei I, Gaginskaya E, Hutchison N and Macgregor H C (1993) Avian sex chromosomes in the lampbrush form: the ZW lampbrush bivalents from six species of bird. *Chromosome Research* **1**: 153-166.
- Solovei I, Gaginskaya E R and Macgregor H C (1994) The arrangement and transcription of telomere DNA sequences at the ends of lampbrush chromosomes of birds. *Chromosome Research* **2**: 460-470
- Solovei I, Macgregor H C and Gaginskaya E (1995) Specifically terminal clusters of telomere DNA sequences are transcribed from the C-rich strand on chicken lampbrush chromosomes. *Proc. Kew Chromosome Conference IV*. P.F.Brandham and M.D.Bennett (eds. Royal Botanic Gardens, Kew, Press. 1995. P 323 – 330
- Solovei I, Ogawa A, Naito M, Mizuno S and Macgregor H C (1998) Specific chromomeres on the chicken W lampbrush chromosome contain specific repetitive DNA sequence families. *Chromosome Research* **6**: 323 – 327.
- Sommerville J, Baird J *et al.* (1993). Histone H4 acetylation and transcription in amphibian chromatin. *J Cell Biol* **120**: 277-290.
- Snow M H L and Callan H G (1969) Evidence for a polarized movement of the lateral loops of newt lampbrush chromosomes during oogenesis. *J Cell Sci* **5**: 1-25.
- Stewart, M. D., J. Sommerville, *et al.* (2006). Dynamic regulation of histone modifications in *Xenopus* oocytes through histone exchange. *Molecular and Cellular Biology* **26**: 6890-6901.
- Vlad M and Macgregor H C (1975) Chromomere number and its genetic significance in lampbrush chromosomes. *Chromosoma* **50**: 327-347
- Wilson E B (1925) *The Cell in Development and Heridity*. The Macmillan Company, N.Y.
- White M J D (1954) *Animal Cytology and Evolution*. The University Press, Cambridge UK

