

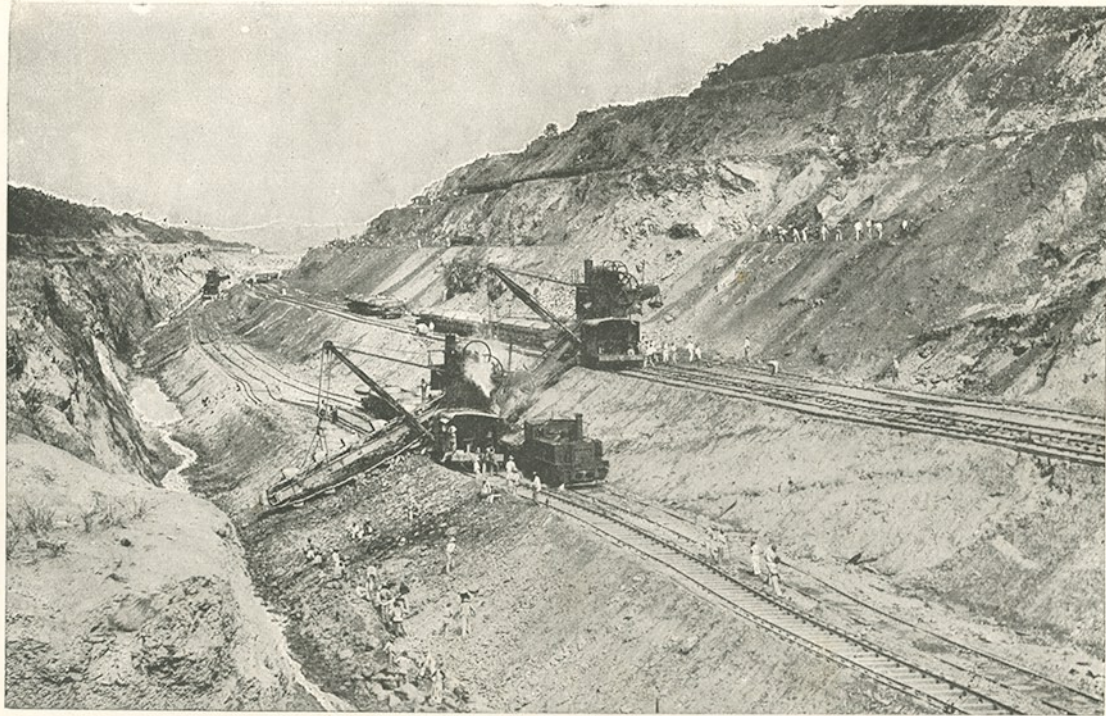
From a photo lent by

A VIEW ON THE MANCHESTER SHIP CANAL

[Manchester Ship Canal Co.]

b16907152_137

The Romance of Modern Engineering
Copyright 2009 University of Exeter, all rights reserved.



By permission of]

VIEW OF A CUTTING ON THE PANAMA CANAL

[“Traction and Transmission”

b16907152_150

The Romance of Modern Engineering

Copyright 2009 University of Exeter, all rights reserved.



By permission of]

A TITAN CRANE SETTING 40-TON APRON BLOCKS AT SOUTH SHIELDS

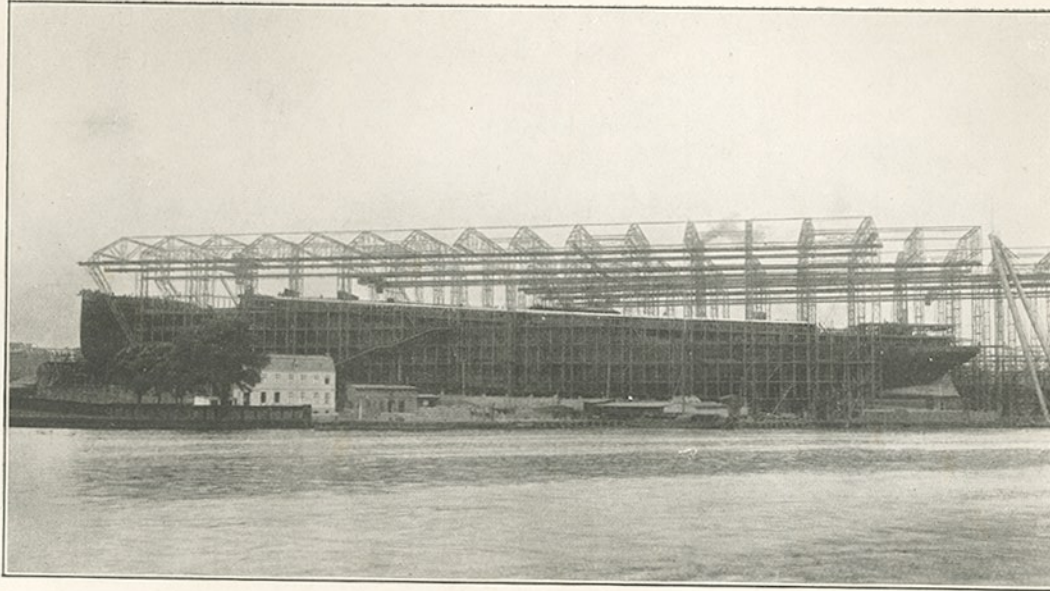
[Messrs. Stothert & Pitt, Bath

The most powerful Titans have a reach of 170 feet radius, and handle 50-ton blocks

b16907152_165

The Romance of Modern Engineering

Copyright 2009 University of Exeter, all rights reserved.



From a photo by the]

THE "KAISER WILHELM II" IN THE SHIPYARD

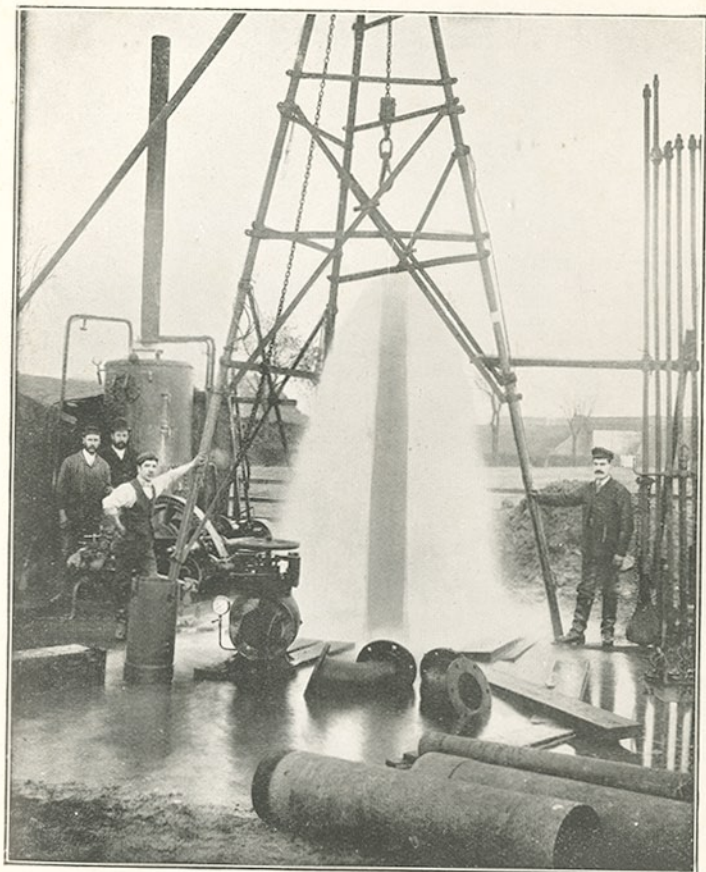
Norddeutscher Lloyd Co.

The two-storey house in the foreground is dwarfed by this 700-foot ocean racer

b16907152_179

The Romance of Modern Engineering

Copyright 2009 University of Exeter, all rights reserved.



From a photo lent by

[Messrs. C. Isler & Co.

BOURN ARTESIAN WELL, NEAR SPALDING, LINCOLNSHIRE

This well yields over 5,000,000 gallons a day, and may therefore be considered the most copious of its kind in Europe. It is 134 feet deep, and 13 inches in diameter. On the right will be seen some of the rods used in the boring of the shaft

b16907152_207