

Engineering
Electrical Engineering fields

Okayama University

Year 1997

An active circuit for cancellation of
common-mode voltage generated by a
PWM inverter

Satoshi Ogasawara
Okayama University

Hideki Ayano
Okayama University

Hirofumi Akagi
Okayama University

This paper is posted at eScholarship@OUDIR : Okayama University Digital Information
Repository.

http://escholarship.lib.okayama-u.ac.jp/electrical_engineering/30

An Active Circuit for Cancellation of Common-Mode Voltage Generated by a PWM Inverter

Satoshi Ogasawara, Hideki Ayano and Hirofumi Akagi
Department of Electrical Engineering
Okayama University
3-1-1 Tsushima-Naka, Okayama, 700 JAPAN

Abstract—This paper proposes an “Active Common-noise Canceler (ACC)” that is capable of eliminating the common-mode voltage produced by a PWM inverter. An emitter follower using complementary transistors and a common-mode transformer are incorporated into the ACC, the design method of which is also presented in detail. A prototype ACC designed and constructed in this paper verifies the viability and effectiveness in a 3.7 kW induction motor drive using an IGBT inverter. Some experimental results show that the ACC makes significant contributions to reducing a ground current and a conducted EMI. In addition, the ACC can prevent an electric shock on a non-grounded motor frame and can suppress a motor shaft voltage.

I. INTRODUCTION

AN emergence of high-speed switching devices such as IGBT's has enabled to increase a carrier frequency of voltage-source PWM inverters, thus leading to much better operating characteristics. High-speed switching, however, can accompany the following serious problems originating from a steep change in voltage and/or current:

- ground current escaping to earth through stray capacitors inside motors[1][2]
- conducted and radiated EMI[3]–[6]
- bearing current and shaft voltage[7]–[9]
- shortening of insulation life of motors and transformers[10]–[13]

The voltage and/or current change caused by high-speed switching produces high-frequency oscillatory common-mode and normal-mode currents at the instant of every switching, because parasitic stray capacitors inevitably exist inside an ac motor. The oscillatory currents with a frequency range of 100 kHz to several MHz can create a magnetic field, and radiate Electro-Magnetic Interference (EMI) noises throughout, thus producing a bad effect on electronic devices such as AM radio receivers and medical equipment.

Generally, common-mode chokes and EMI filters, based on passive elements, could not solve the problems perfectly. The authors have proposed a common-mode transformer with an additional winding shorted by a resistor[2]. It can damp the oscillatory ground current, but a small amount of aperiodic ground current still remains. Some attempts introducing active circuits have been made to eliminate the ground current or common-mode voltage[14][15].

This paper proposes an “Active Common-noise Canceler

(ACC)” that is able to eliminate the common-mode voltage produced by a PWM inverter. The ACC superimposes a compensating voltage on the inverter output. The compensating voltage applied by the ACC has the same amplitude as, but the opposite polarity to, the common-mode voltage produced by the PWM inverter. As a result, the common-mode voltage applied to a load is canceled completely.

A prototype ACC, constructed in this paper, verifies the viability and effectiveness in a 3.7 kW induction motor drive using an IGBT inverter. Some experimental results show that the proposed ACC makes significant contributions to reducing the common-mode current, i.e., the ground current, and the conducted EMI. The ACC can also prevent an electric shock from being received when someone touches a non-grounded motor frame. Furthermore, the ACC can suppress a motor shaft voltage stemming from the common-mode voltage caused by the PWM inverter.

II. PRINCIPLE OF ACTIVE COMMON-NOISE CANCELER

Fig.1 shows the configuration of an experimental system including an active common-noise canceler proposed in this paper. A voltage-source PWM inverter using IGBTs drives an induction motor of 3.7 kW through three feeder wires, and the motor frame is connected to an earth terminal on a switch board. A shaft voltage is measured between the frame and a carbon brush touching to the motor shaft. Measurement of conducted EMI is performed by using a LISN and a spectrum analyzer. The ACC is connected between the inverter output terminals and the three feeder wires. It consists of the following elements; a push-pull emitter follower using transistors having complementary symmetry, a common-mode transformer[2], three capacitors to detect the common-mode voltage appearing at the inverter output terminals, and two dc-side capacitors to prevent a dc current from flowing in the additional winding of the common-mode transformer.

A common-mode current i_c flows to the earth terminal through stray capacitors between the windings and the frame of the motor, because a zero-sequence output voltage of the inverter, i.e., a common-mode voltage, varies every switching of the inverter. The ACC aims to cancel this common-mode voltage perfectly, so that no common-mode current flows, i.e., $i_c = 0$.

Fig.2 shows a common-mode circuit equivalent to the

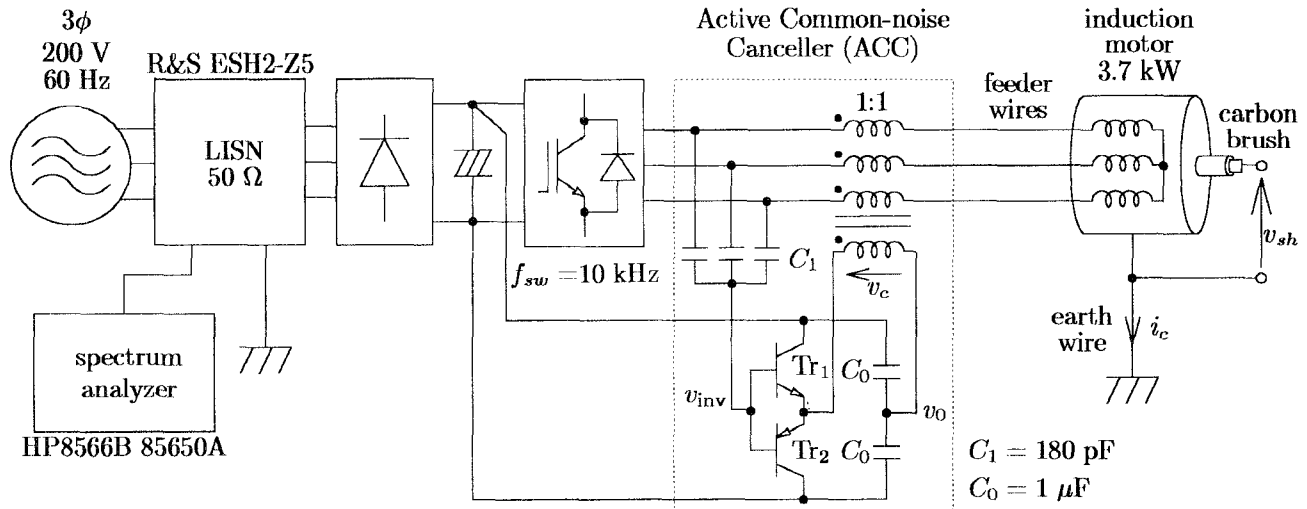


Fig. 1. System configuration.

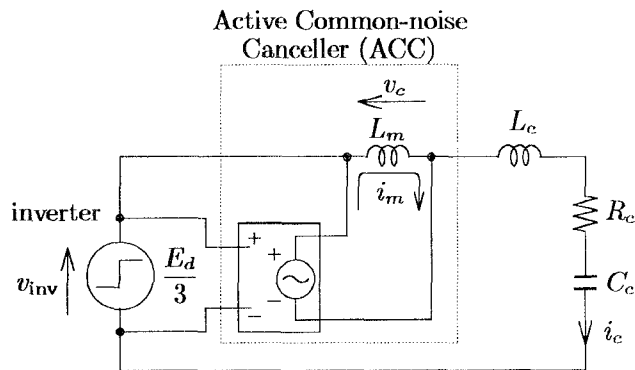


Fig. 2. Common-mode equivalent circuit.

experimental system. Here, C_c means the stray capacitor between the motor windings and the frame, and the total common-mode inductance and resistance are shown as L_c and R_c , respectively. In the equivalent circuit, the voltage-source inverter is modeled by a step voltage source v_{inv} , because switching operation in one phase of the inverter causes step change in the common-mode voltage by $1/3$ of the dc link voltage. If no ACC is connected, the step change makes an oscillatory common-mode current i_c flowing into the earth terminal.

Combination of a voltage-controlled voltage source and an inductor, which are surrounded by a dotted line, corresponds to the ACC. The emitter follower, along with the three capacitors, is represented as the voltage-controlled voltage source due to the following characteristics; a voltage gain close to unity, a high input impedance, and a low output impedance. On the other hand, the common-mode transformer is the same as a conventional common-mode choke, except for connecting a tightly coupled additional winding (secondary winding) to the output of the emit-

ter follower. Therefore, the common-mode transformer is expressed as a magnetizing inductor L_m in the equivalent circuit, neglecting the leakage inductances.

The purpose of the Y-connected capacitors in Fig.1 is to detect the common-mode voltage produced by the inverter. The emitter follower applies the same voltage as the detected voltage to the common-mode transformer. The three primary windings of the common-mode transformer with the polarity shown by the dots in Fig.1 are connected between the output terminals of the inverter and the feeder wires. Therefore, the polarity of the compensating voltage v_c is opposite to the common-mode voltage generated by the inverter. As a result, cancellation of the common-mode voltage is performed perfectly, and so no common-mode current flows.

III. DESIGN OF ACTIVE COMMON-NOISE CANCELER

A. Power Dissipation in the Emitter Follower

The voltage-controlled voltage source in Fig.2 requires the following properties;

- a wide frequency bandwidth up to several MHz,
- a low output impedance for eliminating any influence of the output current on the compensating voltage, and
- a high input impedance to minimize the capacitance of C_1 .

The push-pull emitter follower using complementary transistors satisfies the requirements. Table I shows the absolute maximum ratings of the transistors that are operated in the active region.

If L_m were infinity in Fig.2, the magnetizing current would be zero, so that no power loss would occur in the voltage-controlled voltage source, i.e., the emitter follower. In practice, the magnetizing current is supplied from the emitter follower rather than from the inverter, due to the low output impedance of the emitter follower.

TABLE I
ABSOLUTE MAXIMUM RATINGS OF TRANSISTORS.

Model	2SA1772(SANYO)	2SC4615(SANYO)
V_{CBO} [V]	-400	400
V_{CEO} [V]	-400	400
I_C (DC) [A]	-1	1
P_C [W]	15	15

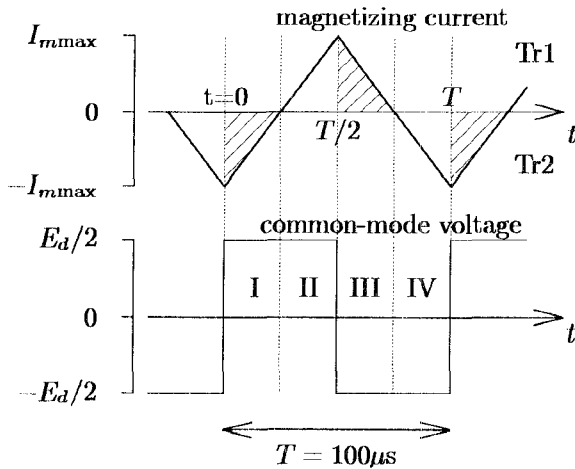


Fig. 3. Variation of magnetizing current.

Fig.3 shows waveforms of the triangular magnetizing current and the rectangular common-mode voltage, in which all three phases are being switched simultaneously at a switching frequency $f_{sw} = 1/T$. As a result, the amount of power dissipation is the maximum.

In intervals II and III, the magnetizing current is positive so that it flows, not through Tr_2 , but through Tr_1 . During interval II, the common-mode voltage is $E_d/2$ so that no collector dissipation occurs in both transistors, because the emitter-collector voltage of Tr_1 equals zero. However, an amount of power dissipation appears in Tr_1 during interval III. Therefore, the average power dissipation of one transistor can be calculated by

$$P_c = \frac{E_d^2 T}{64L_m}. \quad (1)$$

In the experimental system, the PWM period and the dc link voltage of the inverter are $T = 100 \mu s$ and $E_d = 282 V$, respectively. Since the absolute maximum power dissipation of both transistors is rated at 15 W, the magnetizing inductance should be greater than 8.3 mH.

B. Design of the Common-Mode Transformer

Table II shows the specifications of the ferrite core used. The common-mode transformer should be designed so as not to cause magnetic saturation. Therefore, the product of the stack number k of core and the number of turns N satisfies

$$kN > \frac{E_d T}{8A_e B_s}. \quad (2)$$

TABLE II
SPECIFICATION OF TOROIDAL FERRITE CORE.

TYPE	H1D T60×20×36 (TDK)	
A_e	235	mm ²
l_e	144	mm
AL	13.2±25%	μH/N ²
Wt	172	g
B_s	430 (at 25°C)	mT
	260 (at 100°C)	mT

In the experimental system, four toroidal ferrite cores ($k = 4$) are used for the common-mode transformer in consideration of margin, and the number of turns is selected as $N = 22$. Therefore, the magnetizing inductance of the common-mode transformer is given by

$$L_m = 4 \times 13.2 \times 10^{-6} \times 22^2 = 25.6 \text{ mH}. \quad (3)$$

In this case, the power dissipation P_c , the maximum magnetizing current I_{mmax} , and the maximum flux density B_{max} are calculated as follows:

$$P_c = 4.8 \text{ W}, \quad I_{mmax} = 0.14 \text{ A}, \quad B_{max} = 0.17 \text{ T}. \quad (4)$$

The power dissipation in both transistors corresponds to 0.26 % of the rated power of the induction motor.

C. DC-Side Capacitors

A dc component included in the output voltage of the emitter follower may cause an excessive current flowing to the common-mode transformer, and the transistors may break down. In order to remove the dc component, two dc-side capacitors C_0 are connected as shown in Fig.1. The smaller the capacitance of C_0 , the larger the variation of the neutral point potential v_0 . Because the voltage variation amounts to a voltage error in the compensating voltage, a large variation result in imperfect cancellation of the common-mode voltage produced by the inverter. Therefore, C_0 has to be chosen as a value large enough to reduce the voltage variation. In this experiment, the capacitor of 1.2 μF is selected so that the voltage variation can be restricted within ±1.5 % of the dc link voltage.

IV. EFFECT ON GROUND CURRENT

Fig.4 shows experimental waveforms of the common-mode current and voltage without ACC. The common-mode voltage v_{inv} is measured between the neutral points of the Y-connected capacitors and the dc-side capacitors. It is shown that a nonnegligible amount of the common-mode current, i.e., the ground current, leaks to earth every switching of the PWM inverter. The common-mode current i_c oscillates at 290 kHz and the amplitude reaches 0.4 A (peak value). It may cause incorrect operation of an earth leakage breaker and/or radiated EMI[6].

In reference [2], the authors have proposed an equivalent circuit for the ground current, which forms an LCR series resonant circuit as shown in Fig.2. The damped and oscillatory current in Fig.4 is similar to the current waveform

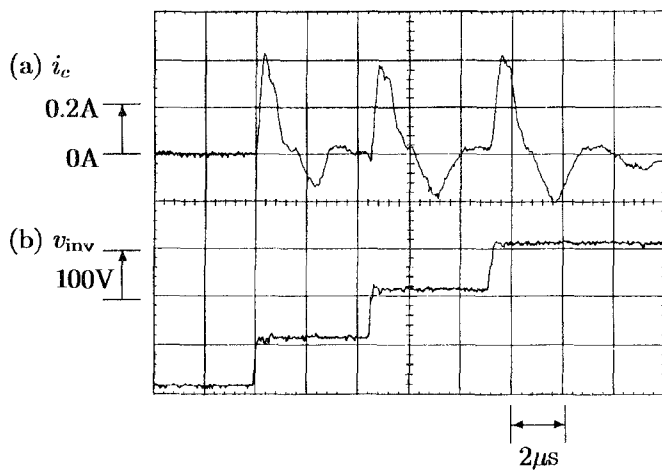


Fig. 4. Ground current without ACC. (a) ground current. (b) common-mode voltage.

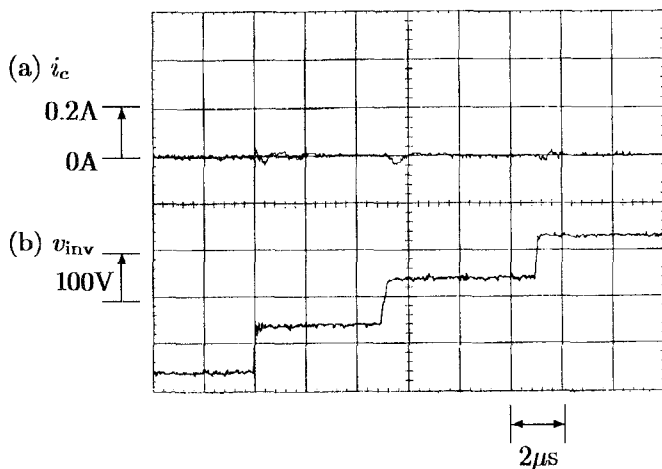


Fig. 5. Ground current with the ACC. (a) ground current. (b) common-mode voltage.

after a step voltage is applied to the equivalent resonant circuit. The equivalent circuit provides a simple way for analyzing the ground current with a sufficient accuracy. It is considered that the equivalent circuit is the same as the reduced-order common-mode model for evaluating the shaft voltage buildup[9].

Fig.5 shows an experimental result with the ACC. These waveforms indicate that the ACC is capable of suppressing the common-mode current almost completely. A mere common-mode current remains due to a control delay of the emitter follower every switching. The ACC is effective in reduction of the common-mode or ground current.

V. EFFECT ON CONDUCTED EMI

Fig.6 shows conducted EMI, measured in a frequency range from 10 kHz to 30 MHz. In a range from 10 kHz to 150 kHz, it turns into a sequence of impulse spectra at intervals of the switching frequency of 10 kHz, where the spectrum analyzer used for measurement has a resolution bandwidth of 200 Hz. Since the resolution bandwidth is

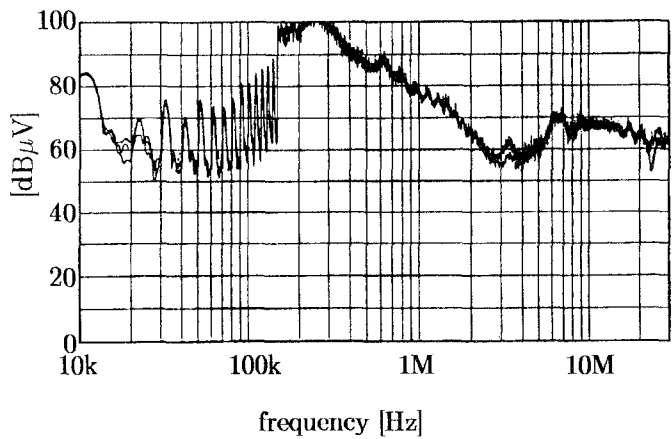


Fig. 6. Conducted EMI without ACC.

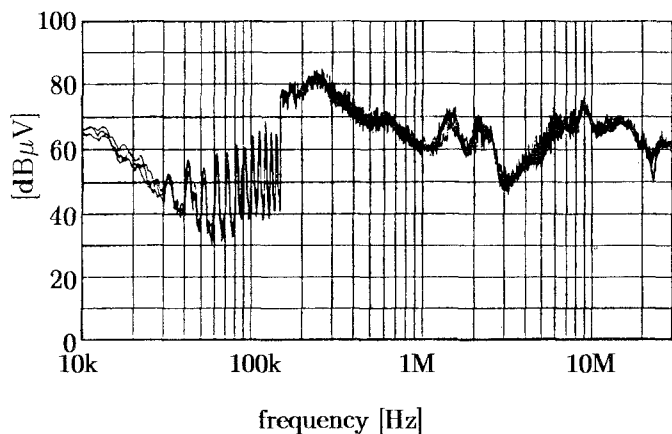


Fig. 7. Conducted EMI with the ACC.

changed to 9 kHz in a range from 150 kHz to 30 MHz, it turns into a continuous spectrum. It is shown that conducted EMI beyond 100 dB μ V occurs at the maximum point.

The frequency at the maximum point coincides with the oscillation frequency of the ground current shown in Fig.4. This fact indicates that the conducted EMI is affected by the common-mode current. The conducted EMI is measured as a voltage drop when the common-mode current flows through a resistor in the LISN. Therefore, analysis of the conducted EMI can be achieved by using a common-mode equivalent circuit combined with the LISN.

Fig.7 shows a conducted EMI when the ACC is connected. The experimental result indicates that the ACC decreases the conducted EMI by about 20 dB in a frequency range from 10 kHz to 3 MHz. The ACC proposed in this paper makes great contributions to reducing the conducted EMI in a wide frequency range.

VI. EFFECT ON PREVENTION OF ELECTRIC SHOCK

In Japan, a safety standard to prevent an electric shock from being received on an accessible metal part of non-grounded electric apparatus is enacted, which is a similar standard to the IEC 335. A measuring circuit complying

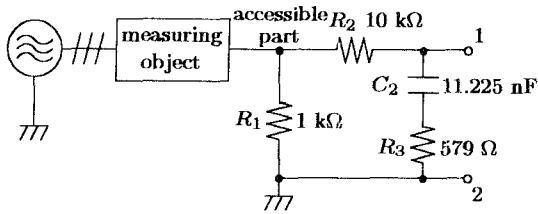


Fig. 8. Measuring circuit.

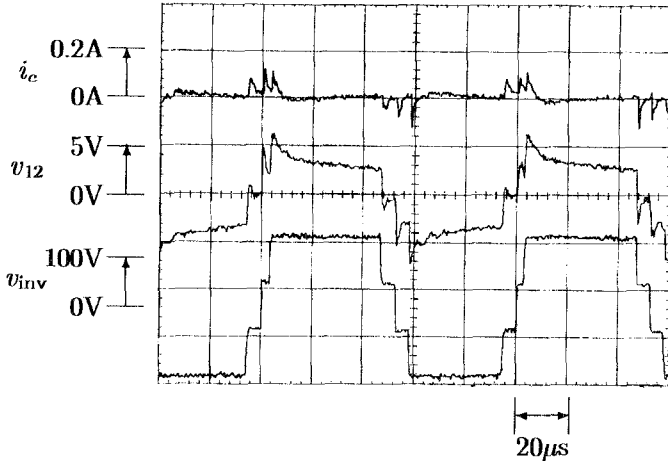


Fig. 9. Terminal voltage of measuring circuit without ACC.

with the Japanese standard is shown in Fig.8. The measuring circuit is connected between a non-grounded motor frame and an earth terminal, and a rms value of voltage between output terminals 1-2 is measured. It is judged that there is no danger of an electric shock when the terminal voltage is less than 1 V.

A. Analysis of the Terminal Voltage

Fig.9 shows waveforms of the common-mode current, the terminal voltage of the measuring circuit and the common-mode voltage when no ACC is connected. The rms value of the terminal voltage v_{12} is 3.54 V. Since the rms value exceeds 1 V, the motor frame has the potential of an electric shock¹.

The terminal voltage waveform is analyzed by using a circuit simulator. The simulation circuit is shown in Fig.11. Here, C_c means a stray capacitor between the windings and frame of the motor, and the value is measured by an LCR meter. The equivalent circuit with focus the common-mode voltage and current is represented by capacitor C_c , because the common-mode impedance included in both feeder wires and grounding conductor is negligible, compared with that of the measuring circuit. The amplitude of the common-mode voltage is 280/3 V, assuming that one phase of the inverter is switched.

Figs.10 and 12 show expanded waveforms of Fig.9 and a simulation result, respectively. Although the motor is dealt with as capacitor C_c , the simulated waveforms of i_c and v_{12}

¹Generally, a frame of induction motor is grounded for safety.

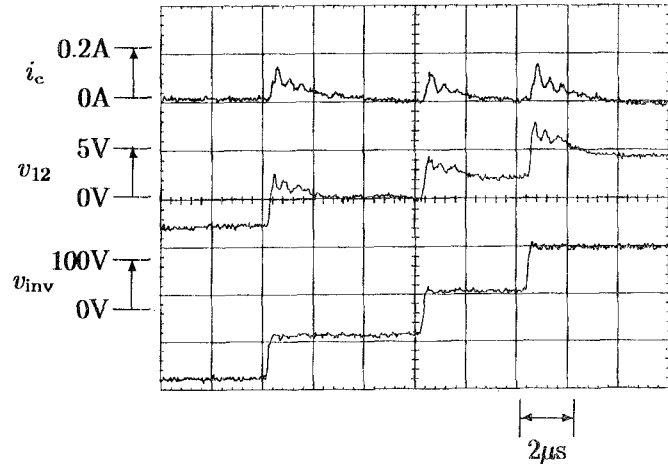


Fig. 10. Expanded waveforms of Fig.9.

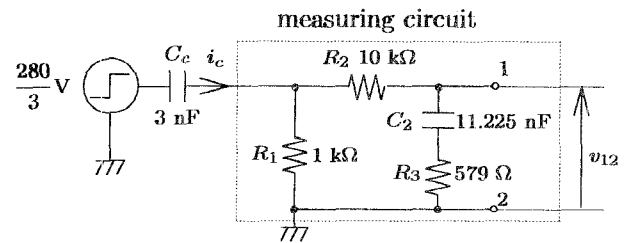


Fig. 11. Simulation circuit.

coincide with the experimental waveforms. The larger C_c , the larger the rms value of the terminal voltage. Hence, reduction of C_c is effective in mitigation of an electric shock on the motor frame.

B. In Case of the Connecting Common-Mode Transformer

Fig.13 shows waveforms of the common-mode current, the terminal voltage and the common-mode voltage when the common-mode transformer proposed in reference [2] is connected to output terminals of the inverter. Here, the secondary winding of the common-mode transformer is shorted by a resistance of 1 kΩ. Compared with Fig.9, it is shown that the common-mode current decreases and

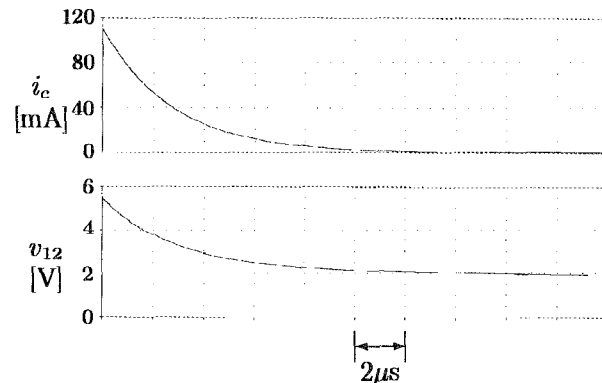


Fig. 12. Simulated waveforms.

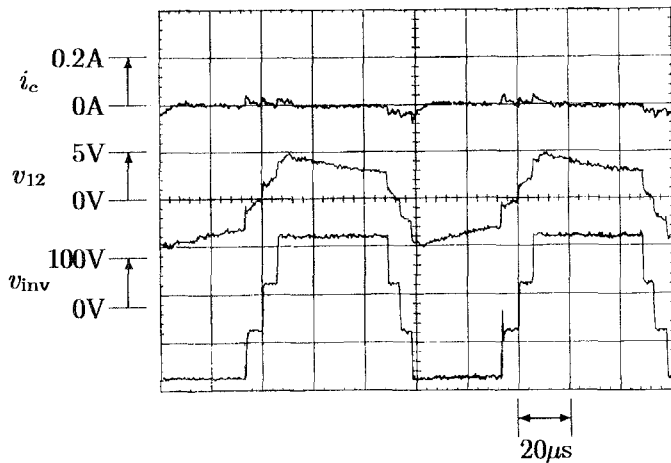


Fig. 13. Terminal voltage of measuring circuit when connecting the common-mode transformer.

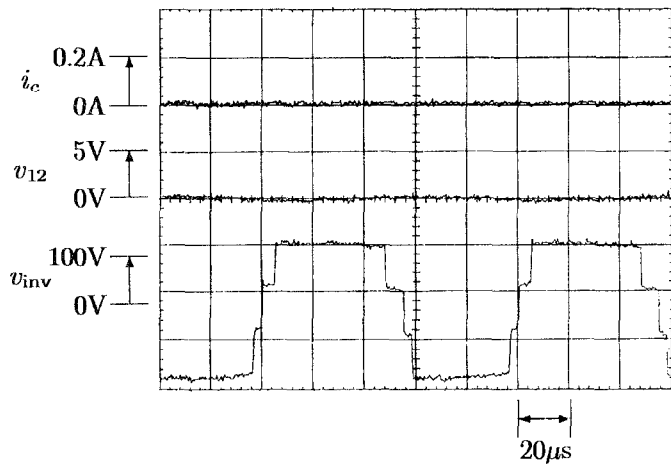


Fig. 14. Terminal voltage of measuring circuit when connecting the ACC.

that the overshoot of the terminal voltage occurring every switching is mitigated. The reason is that the common-mode transformer acts as a damping resistor and limits a slope of the common-mode voltage appearing on the motor terminals, like a soft-switching inverter. In this case, the rms value of the terminal voltage v_{12} is 3.46 V, which exceeds 1 V. The fact implies that soft switching techniques have little effect on prevention of an electric shock.

C. In Case of Connecting the ACC

Fig.14 shows waveforms of the common-mode current, the terminal voltage and the common-mode voltage in the case of connecting the ACC to the output terminals of the inverter. Compared with Fig.9, it is indicated that the common-mode current i_c and the terminal voltage v_{12} are well reduced because the ACC cancels the common-mode voltage almost perfectly. The rms value of the terminal voltage, 0.1 V, is much smaller than the prescribed value 1 V. Therefore, the ACC can remove any danger of an

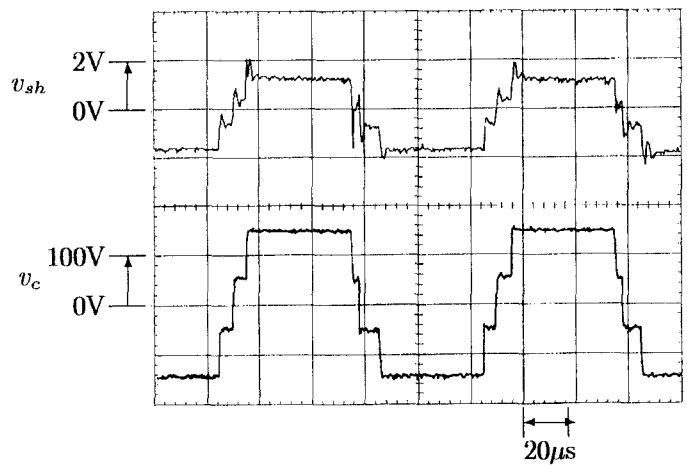


Fig. 15. Motor shaft voltage without ACC.

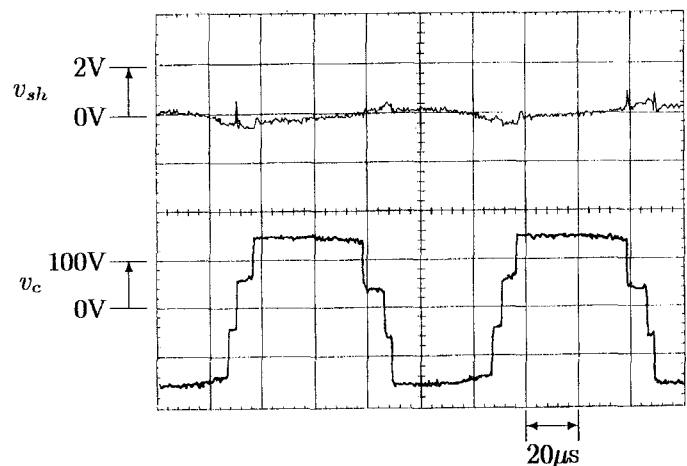


Fig. 16. Motor shaft voltage with the ACC.

electrical shock received on the non-grounded motor frame.

VII. EFFECT ON MOTOR SHAFT VOLTAGE

Fig.15 shows experimental waveforms of a common-mode voltage and a motor shaft voltage when no ACC is connected. A motor shaft voltage of 2 V (peak value) occurs every PWM period of the inverter. It is concluded that the motor shaft voltage is caused by the common-mode voltage, because shapes of the two waveforms are similar. The shaft voltage results from a capacitive coupling between the stator and rotor. It may induce electric field breakdown of a thin oil film existing between a bearing race and balls, thus resulting in the bearing current. The bearing of the motor might be damaged by the bearing current altering the chemical composition of the lubricant[9].

Fig.16 shows experimental waveforms when the ACC is connected. Compared with Fig.15, the motor shaft voltage is suppressed sufficiently. Therefore, the ACC produces a welcome side effect, i.e., "no flow of bearing current."

VIII. CONCLUSIONS

In this paper, an active common-mode canceler (ACC) has been proposed, which is capable of canceling a common-mode voltage generated by a PWM inverter. A prototype ACC has been constructed and tested to verify the effectiveness in a 3.7 kW induction motor drive using an IGBT inverter. As a result, it is shown that the ACC can suppress a ground current almost perfectly. Moreover, the effect on prevention of an electric shock is confirmed by using a measuring circuit complying with a Japanese standard. It is shown that the ACC can remove any danger of an electric shock on the non-grounded motor frame. The ACC is also a promising way of reducing a motor shaft voltage and conducted EMI.

REFERENCES

- [1] Y. Murai, T. Kubota, and Y. Kawase: "Leakage Current Reduction for a High-Frequency Carrier Inverter Feeding an Induction Motor," *IEEE Trans. Industry Applications*, vol. 28, no. 4, pp.858-863, Jul./Aug., 1992.
- [2] S. Ogasawara and H. Akagi: "Modeling and Damping of High-Frequency Leakage Currents in PWM Inverter-Fed AC Motor Drive Systems," *IEEE Trans. Industry Applications*, vol. 32, no. 5, pp. 1105-1114, 1996.
- [3] M. A. Jabbar and M. A. Rahman: "Radio Frequency Interference of Electric Motor and Associated Controls," *IEEE Trans. Industry Applications*, vol. 27, no. 1, pp. 27-31. Jan./Feb., 1991.
- [4] G. Venkataramanan and D. M. Divan: "Pulse Width Modulation with Resonant dc Link Converters," *IEEE Trans. Industry Applications*, vol. 29, no. 1, pp. 113-120, Jan./Feb., 1993.
- [5] E. Zhong, and T. A. Lipo: "Improvement in EMC Performance of Inverter-Fed Motor Drives," *IEEE Trans. Industry Applications*, vol. 31, no. 6, pp. 1247-1256, 1995.
- [6] S. Ogasawara, H. Ayano and H. Akagi: "Measurement and Reduction of EMI Radiated by a PWM Inverter-Fed AC Motor Drive System," *IEEE/IAS Annual Meeting*, pp. 1072-1079, 1996.
- [7] S. Chen, T. A. Lipo, D. Fitzgerald: "Modeling of Motor Bearing Currents in PWM Inverter Drives," *IEEE Trans. Industry Applications*, vol. 32, no. 6, pp.1365-1370, 1996.
- [8] J. M. Erdman, R. J. Kerkman, D. W. Schlegel and G. L. Skibinski: "Effect of PWM Inverters on AC Motor Bearing Currents and Shaft Voltages," *IEEE Trans. Industry Applications*, vol. 32, no. 2, pp. 250-259. Mar./Apr., 1996.
- [9] D. Busse, J. Erdman, R. J. Kerkman, D. Schlegel and G. Skibinski: "Bearing Currents and Their Relationship to PWM Drives," *IEEE Trans. Power Electronics*, vol. 12, No. 2, pp. 243-252, Mar., 1997.
- [10] B. Heller, A. Veverka: "Surge Phenomena in Electrical Machine," ILIFFE BOOKS LTD., 1968.
- [11] R. E. Pretorius and A. J. Eriksson: "A basic guide to rc surge suppression on motors and transformers," *Transaction on SA Institute of Electrical Engineers*, pp. 201-209, Aug. 1980.
- [12] B. K. Bose: "Power Electronics and Motion Control - Technology Status and Recent Trends," *IEEE Trans. Industry Applications*, vol. 29, no. 5, pp. 902-909, Sep./Oct., 1993.
- [13] A. von Jouanne, D. A. Rendusara, P. N. Enjeti, W. G. Gray: "Filtering Technique to Minimize the Effect of Long Motor Leads on PWM Inverter-Fed AC Motor Drive Systems," *IEEE Trans. Industry Applications*, vol. 32, no. 4, pp.919-926, 1996.
- [14] A. Ogata and I. Takahashi: "Active Compensation Circuit of Leak Current in Inverter driven loads," *National Convention Rec. IEE Japan*, No.815, 1996 (in Japanese).
- [15] A. L. Julian, T. A. Lipo and G. Oriti: "Elimination of Common Mode Voltage in Three Phase Sinusoidal Power Converters," *PESC 96 Conf. Rec.*, pp.1968-1972, 1996.