

E-LIS: An International Open Archive for LIS Professionals

SLSTINET
8th February, 2007

W.M. Tharanga D. Ranasinghe
Assistant Librarian/ Visiting Lecturer
University of Kelaniya

tharangad@kln.ac.lk

Contents

- Concept & importance of Open Access (OA) & Digital Repositories
- What is E-LIS?
- E-Prints software (open source software)
- How to find a document on E-LIS? (browse/search)
- How to deposit documents? (submission policy, register, deposit)
- Copyright issues, Metadata Policy
- Advantages / Additional features of E-LIS
- Other open archives in LIS
- References

08/02/2007

WMTD Ranasinghe - University of Kelaniya

2

Introduction

- The Open Access (OA) movement is one of more striking developments in the world of scholarly communication.
- The aim of OA is to make the recorded output of research, most of which is publicly funded, freely available to all over the Internet.
- At present, much of the information is hidden behind subscriptions & is limited to those who can afford to pay on their own.

08/02/2007

WMTD Ranasinghe - University of Kelaniya

3

Introduction

- There are two main avenues of OA.
 - Open access publishing
 - &
 - Author self-archiving in repositories
- Self-archiving can be defined as the deposit of a digital document in a public, free-access repository, for example, an e-print archive.

08/02/2007

WMTD Ranasinghe - University of Kelaniya

4

Introduction

- An e-print archive is a collection of digital research documents such as articles, book chapters, conference papers and data sets.
- An **eprint** is a digital version of a research document (usually a journal article, but could also be a thesis, conference paper, book chapter, or a book) that is accessible online, whether from a local Institutional, or a central (subject- or discipline-based) Digital Repository.

08/02/2007

WMTD Ranasinghe - University of Kelaniya

5

Introduction

- When applied to journal articles, the term "**eprints**" (or "e-prints") covers both **preprints** (before **peer review**) and **postprints** (after peer review).
- "**eprints**" = **preprints** + **postprints**.

08/02/2007

WMTD Ranasinghe - University of Kelaniya

6

Introduction

- Author self-archiving in repositories includes;
 - Institution-based repositories
 - &
 - Subject-based repositories
- E-LIS is a subject based repository.

08/02/2007

WMTD Ranasinghe - University of Kelaniya

7

E-LIS

- A freely accessible International Open Access Archive for the LIS sphere.
- Established in 2003
- International (all languages are supported)
- Based on the Open Source initiatives

08/02/2007

WMTD Ranasinghe - University of Kelaniya

8

E-LIS

- Biggest repository in the field of LIS (**5051** documents – 06/02/2007)
- Its objective is to make the full text of LIS related documents...
 - Visible, accessible, harvestable, searchable and useable...
 - ...by any potential user with access to the Internet
- **Totally free for any user!!!**

08/02/2007

WMTD Ranasinghe - University of Kelaniya

9

E-LIS

- It is the first international e-server in this subject area and resulted from the [RCLIS](#) (Research in Computing, Library and Information Science) project and the [DoIS](#) ([Documents in Information Science](#)).
- E-LIS relies on the voluntary work of individuals from a wide range of backgrounds and is non-commercial. There is neither funding nor interest in profiting from the initiative.
- E-LIS aims to further the Open Access philosophy by making available papers in LIS and related fields. It is a free-access international archive

08/02/2007

WMTD Ranasinghe - University of Kelaniya

10

Objective

- **To promote** self-archiving in LIS (not only in E-LIS)
- **To offer** an open archive:
 - To authors without access to an institutional repository
- **More visibility** for authors, citations
- **Platform** to test and see how an open archive works and what its capabilities are
- Really...it was necessary

08/02/2007

WMTD Ranasinghe - University of Kelaniya

11

Based on Open Source...

- Built using the freely available [GNU Eprints](#) archive-creating software, developed at the University of Southampton
- (<http://www.eprints.org/>)
- Open source [EPrints](#) software provides a Web-based Institutional Repository and is established as the easiest and fastest way to set up repositories of open access research literature, scientific data, theses, reports and multimedia.

08/02/2007

WMTD Ranasinghe - University of Kelaniya

12

How to find documents in E-LIS?

- There are two ways in finding a document
 - Browsing
 - (author, subject, country, book/journal title, year of publication, etc.)
 - Searching
 - Quick search (@ homepage)
 - Simple search (title/abstract keywords, full text, authors/editors, year)
 - Advanced search (any field including above & publication, language, status, editor, etc.)

08/02/2007

WMTD Ranasinghe - University of Kelaniya

13

- Items deposited in the last week can be viewed within the **Recent Submissions** section of the homepage.
- Having browsed/searched the archive, users can then view the metadata associated with a document of interest, and download it if required, if it does not have restricted access.

08/02/2007

WMTD Ranasinghe - University of Kelaniya

14



Browse

- By Author or Editor
- By Journal or Book
- By Subject
- By Country
- By Year
- By Latest Additions

<http://eprints.rclis.org/>

Search

How to?

Simple
 Advanced

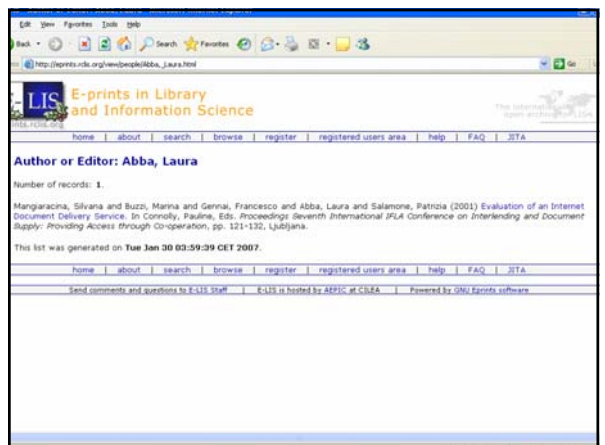
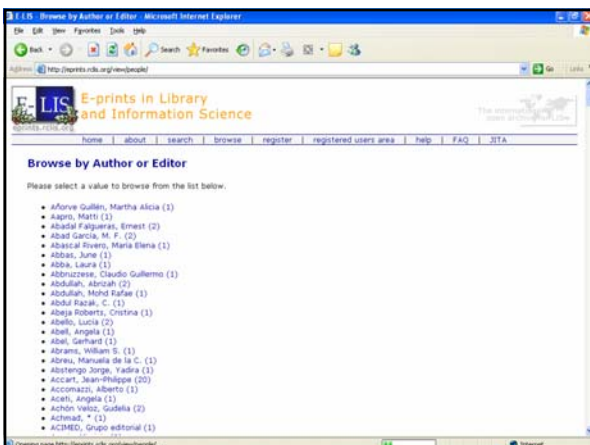
Titles, Abstracts, Keywords

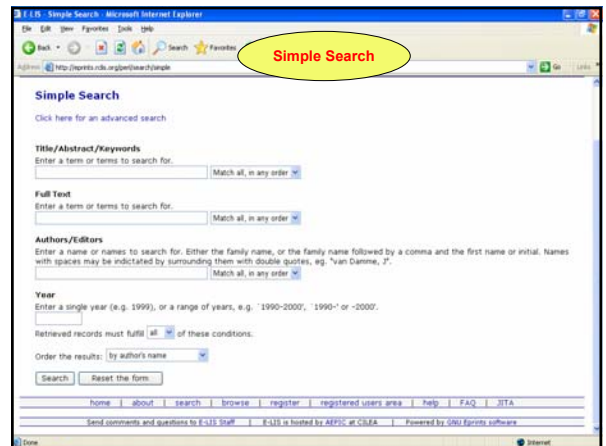
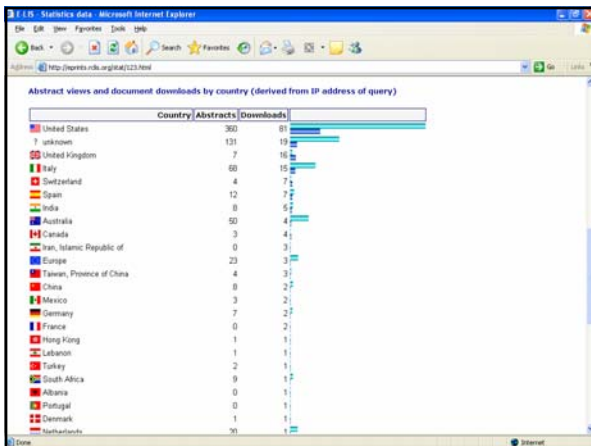
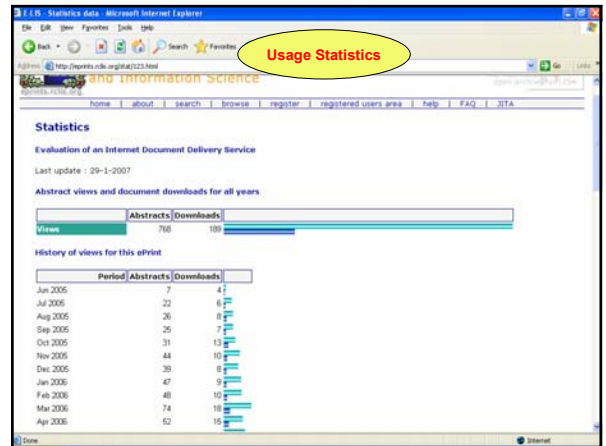
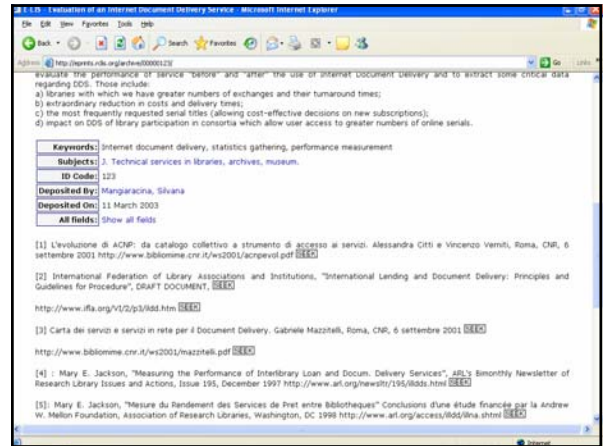
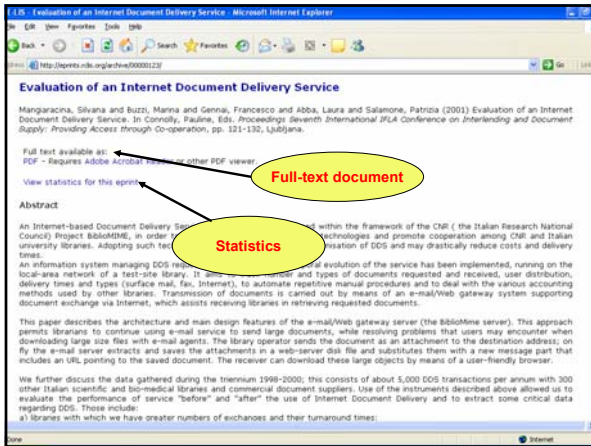
Full text

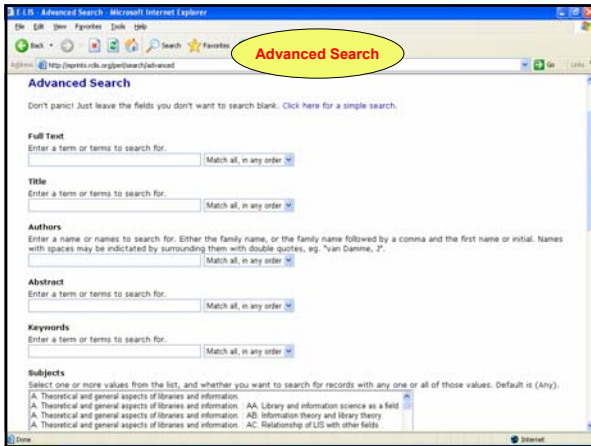
08/02/2007

WMTD Ranasinghe - University of Kelaniya

16







Contribution to E-LIS

- In order to get the maximum number of authors on board, the contribution policy is very simple.
- In a broad sense, any document related to LIS that is electronically available, in any format, can be submitted to the archive.
- The basic criteria for acceptance is that the document must be relevant to research in LIS fields and should be complete and ready to be entered into a process of scholarly communication.

08/02/2007

WMTD Ranasinghe - University of Kelaniya

28

Contribution to E-LIS

- Contribution policy very simple
 - Any document related by topic with LIS
 - Available electronically
 - Any format
 - Must be relevant to research in LIS
- Authors are invited to collaborate in the growth of this important project, by submitting their works to the E-LIS server, to build up a collection of freely accessible and usable LIS documents, within an internationally compatible OAI system.

08/02/2007

WMTD Ranasinghe - University of Kelaniya

27

Submission Policy

- Searching and archiving in E-LIS are totally free for any user.
- The only requirement is that authors wishing to submit a document need to register in order to obtain a user id in the system.
- Searching E-LIS requires no registration.

08/02/2007

WMTD Ranasinghe - University of Kelaniya

28

Publications may include...

- preprints (pre-refereed journal paper)
- postprints (refereed journal paper)
- conference papers
- conference posters
- presentation
- books
- book chapters
- technical reports/departmental working papers
- theses,
- newspaper and magazine articles.

08/02/2007

WMTD Ranasinghe - University of Kelaniya

29

Submission Policy

- Submitted documents will be placed into the submission buffer, where they may be approved by the E-LIS Staff, rejected, or returned to the author for modifications in the metadata or if there are problems with the electronic file.
- Documents in the submission buffer are manually reviewed to confirm they fit our policy before adding them to E-LIS.

08/02/2007

WMTD Ranasinghe - University of Kelaniya

30

Submission Policy

- E-LIS staff controls the metadata quality of the document and are allowed to make changes if the metadata are incorrect.
- Two business days is the allowable time period between when a paper is deposited to E-LIS and when it becomes accessible to other users.
- All languages are supported since E-LIS is an international open archive.
- If the document is in a language other than English, it must include an English abstract and keywords in English.

08/02/2007

WMTD Ranasinghe - University of Kelaniya

31

How to deposit a document in E-LIS?

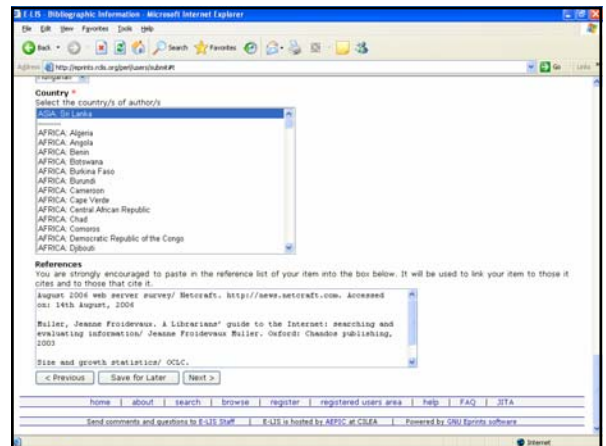
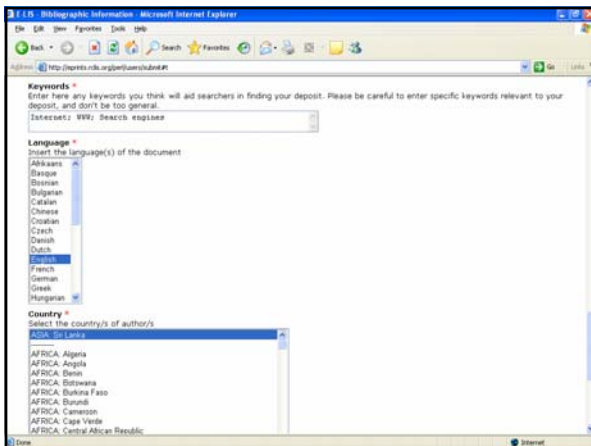
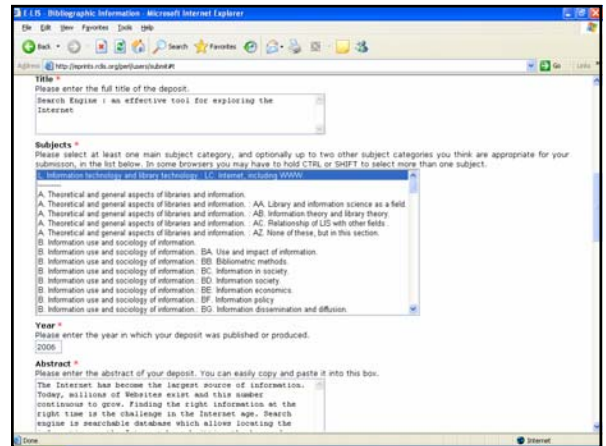
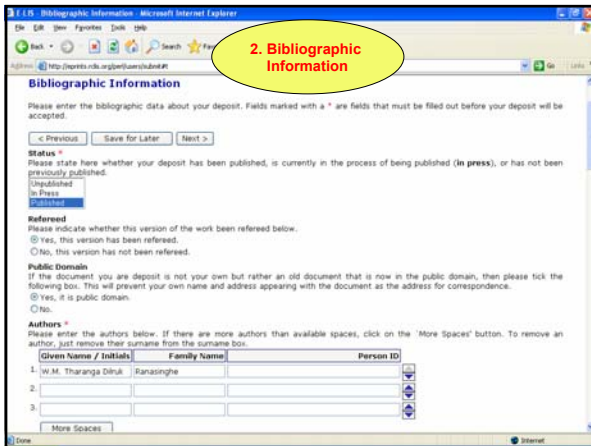
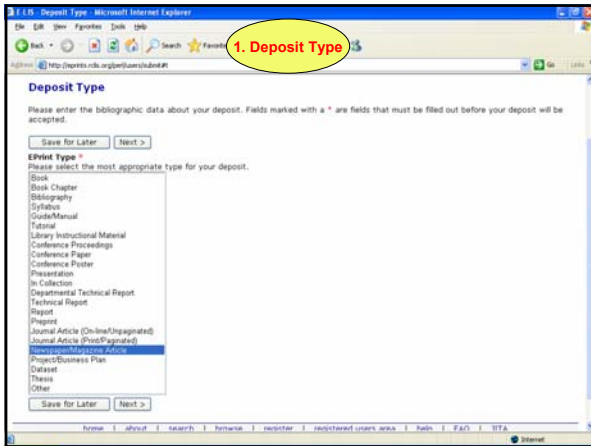
How to deposit a document in E-LIS?: 6 steps

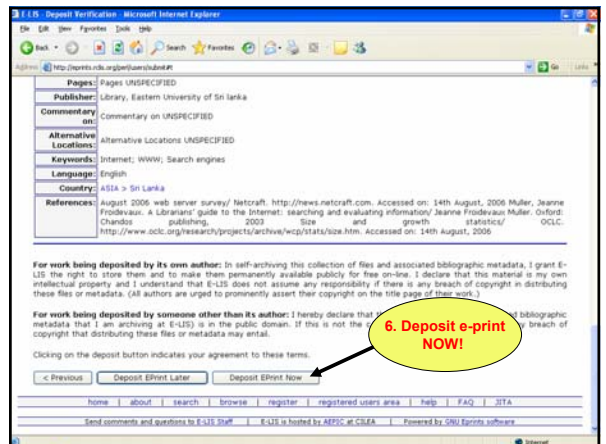
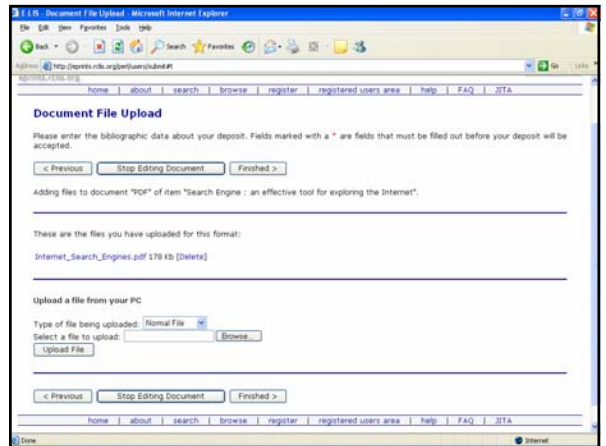
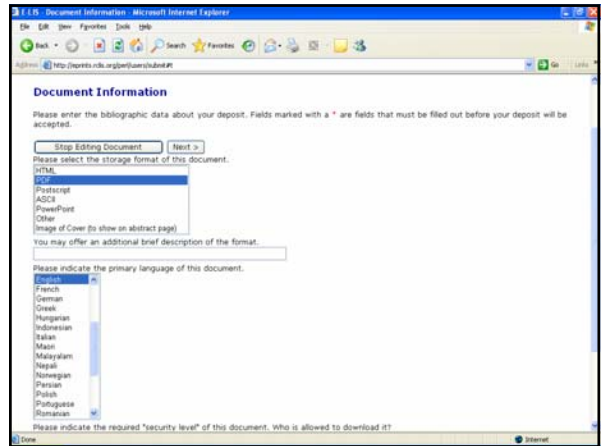
- Select "Deposit Type" (book, presentation, theses, etc.)
- Provide "Bibliographic information" (status, refereed, authors, title, subject, year, abstract, keywords, language, country, references)
- Attach the document (.pdf, .html, .ppt, etc.)
- Document file upload
- Deposit verification
- Deposit e-print

08/02/2007

WMTD Ranasinghe - University of Kelaniya

36





Copyright Issues

- All works on E-LIS remains the copyright of the author.
- Texts that an author has himself written are his own intellectual property.
- When you submit a preprint to an e-prints server, you retain copyright.
- The right to self-archive the refereed postprint is a legal matter because the copyright transfer agreement pertains to that text.
- Authors can also deposit the postprint inside the archive with restricted access.
- However, users of the works are granted permission for individual, educational research, and non-commercial reproduction under national, foreign, and international laws on Copyright.

08/02/2007

WMTD Ranasinghe - University of Kelaniya

49

Metadata Policy

- Third parties may collect metadata from the archive via mechanics that create end-user services to support the discovery and presentation of the archive's content. The general policy is to allow harvesting of metadata. Harvesting full content is not permitted.

08/02/2007

WMTD Ranasinghe - University of Kelaniya

50

Who is behind E-LIS?

Working Group

- 65 editors from 41 countries
[Argentina](#) | [Austria](#) | [Bosnia and Herzegovina](#) | [Brazil](#) | [Canada](#) | [Chile](#) | [China](#) | [Colombia](#) | [Costa Rica](#) | [Croatia](#) | [Cuba](#) | [Czech Republic](#) | [Germany](#) | [Greece](#) | [India](#) | [Indonesia](#) | [Israel](#) | [Italy](#) | [Mexico](#) | [Moldova](#) | [Nepal](#) | [New Zealand](#) | [Nigeria](#) | [Pakistan](#) | [Peru](#) | [Poland](#) | [Russia](#) | [Serbia and Montenegro](#) | [South Africa](#) | [Spain](#) | [Sri Lanka](#) | [Switzerland](#) | [Thailand](#) | [Turkey](#) | [Uganda](#) | [United Kingdom](#) | [United States](#) | [Zambia](#) | [Zimbabwe](#) |
- 2 administrators and 4 technicians
- CILEA facilitates the technical service and server
- But more people are involved....

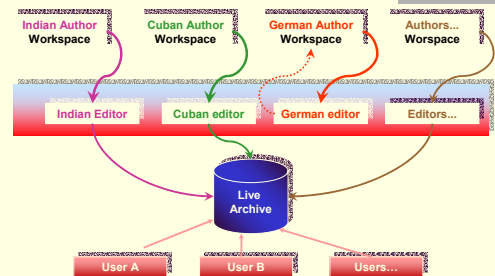
08/02/2007

WMTD Ranasinghe - University of Kelaniya

51

Basic workflow

Way of work



08/02/2007

WMTD Ranasinghe - University of Kelaniya

52

Advantages of E-LIS

- Dissemination of research findings
- World-wide access
- Preservation/backup
- Promote OA concept
- Abstracting & indexing tool
- & more....

08/02/2007

WMTD Ranasinghe - University of Kelaniya

53

Additional features of E-LIS

- Usage Statistics
- JITA Classification Scheme (<http://eprints.rclis.org/jita.html>)
- E-mail alerts (<http://eprints.rclis.org/alerts.html>)

08/02/2007

WMTD Ranasinghe - University of Kelaniya

54

Other open archives in LIS

- **@rchiveSIC** <http://archivesic.ccsd.cnrs.fr/>
 - 622 documents; France; Project in collaboration with various French research institutions; DSpace
- **mémSIC** <http://memsic.ccsd.cnrs.fr/>
 - 130 documents (memories); France; Project in collaboration with various French research institutions; DSpace
- **DLIST** <http://dlist.sir.arizona.edu/>
 - 500 documents; Accepts documents only in English; Directed towards librarianship and information literacy; School of Information Resources and Library Science and Arizona Health Sciences Library (University of Arizona); Eprints software
- **Caltech Library System Papers** <http://caltechlib.library.caltech.edu/>
 - 35 documents (published or in press); Reserved for Caltec workers; Part of Caltech CODA (Collection of Open Digital Archives) project (California Institute of Technology); Eprints software
- **LDL Librarians' Digital Library** <https://drtc.isibang.ac.in/>
 - 176 documents; Situated in the Indian Documentation Research & Training Centre (DRTC), Indian Statistical Institute of Bangalore; Based on DSpace platform
- **DSpace at lib.usu.ru**
 - Russian Federation Research Institutional or Departmental; Total OAI Records: 513, but only 60 in LIS collections; Based on DSpace platform

08/02/2007

WMTD Ranasinghe - University of Kelaniya

55

References

- E-LIS: E-Prints in Library & Information Science. Available on: <http://eprints.rclis.org/>
- De Robbio, Antonella and Subirats Coll, Imma (2005) [E-LIS : an international open archive towards building open digital libraries](#). *High Energy Physics Libraries Webzine* (11/2005)
- Barrueco Cruz, Jose Manuel and Subirats Coll, Imma (2003) [RCLIS: towards a digital library for Information Science](#). In *Proceedings Libraries in Digital Age (LIDA)*, Dubrovnik and Mijet (Croatia)

08/02/2007

WMTD Ranasinghe - University of Kelaniya

56

Conclusion

...if librarians don't promote open acces nor do they self-archive in their own field...

...how are we going to convince the rest of the authors?

08/02/2007

WMTD Ranasinghe - University of Kelaniya

57

Conclusion

To conclude, I invite members of SLSTINET libraries to deposit your writings, presentations, & more in E-LIS.

Also, invite **NSF** to take an initiative to establish it's own **institutional/subject-based repositories based on GNU e-prints.**

08/02/2007

WMTD Ranasinghe - University of Kelaniya

58

E-LIS Sri Lanka

- E-LIS Sri Lanka Yahoo! Group (http://asia.groups.yahoo.com/group/e_lissrilanka)
- E-LIS Sri Lanka blog (<http://e-lissrilanka.blogspot.com>)
- For more information: tharangad@kln.ac.lk

08/02/2007

WMTD Ranasinghe - University of Kelaniya

59

Thanks for your attention!

08/02/2007

WMTD Ranasinghe - University of Kelaniya

60