



Politecnico di Torino

Porto Institutional Repository

[Article] Preliminary risk assessment of ecotoxic substances accidental releases in major risk installations through fuzzy logic

Original Citation:

Darbra R.M; Demichela M.; Mure' S (2008). *Preliminary risk assessment of ecotoxic substances accidental releases in major risk installations through fuzzy logic*. In: [PROCESS SAFETY AND ENVIRONMENTAL PROTECTION](#), vol. 86, pp. 103-111. - ISSN 0957-5820

Availability:

This version is available at : <http://porto.polito.it/1655562/> since: March 2008

Publisher:

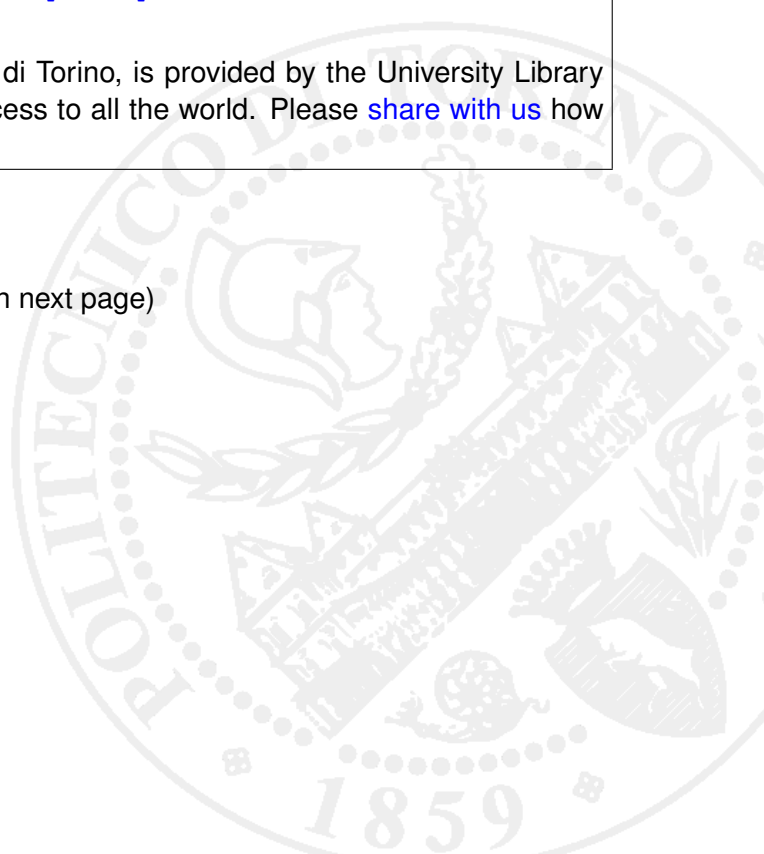
Elsevier

Terms of use:

This article is made available under terms and conditions applicable to Open Access Policy Article ("Public - All rights reserved") , as described at http://porto.polito.it/terms_and_conditions.html

Porto, the institutional repository of the Politecnico di Torino, is provided by the University Library and the IT-Services. The aim is to enable open access to all the world. Please [share with us](#) how this access benefits you. Your story matters.

(Article begins on next page)



Preliminary risk assessment of ecotoxic substances accidental releases in major risk installations through Fuzzy Logic

Darbra¹, R. M., Demichela², M., Murè³, S.

¹Centre d'Estudis del Risc Tecnològic (CERTEC). Department d'Enginyeria Química. Universitat Politècnica de Catalunya. Diagonal 647, 08028-Barcelona. Catalonia (Spain). E-mail: rm.darbra@upc.edu

²SAfeR- Centro Studi su Sicurezza, Affidabilità e Rischi. Dipartimento di Scienza dei Materiali e Ingegneria Chimica-Politecnico di Torino. Corso Duca degli Abruzzi, 24, 10129- Torino (Italy)

³ARIA s.r.l. – Analisi dei Rischi Industriali e Ambientali. Via P.C. Boggio, 61- 10138 Torino (Italy)

This is the author post-print version of an article published on *Process Safety and Environmental Protection*, Vol. 86, pp. 103-111, 2008 (ISSN 0957-5820).

The final publication is available at

<http://www.journals.elsevier.com/process-safety-and-environmental-protection/>

This version does not contain journal formatting and may contain minor changes with respect to the published edition.

The present version is accessible on PORTO, the Open Access Repository of the Politecnico of Torino, in compliance with the publisher's copyright policy.

Copyright owner: *Elsevier*.

Abstract

In the present work a fuzzy logic model to preliminary assess the risk of accidental releases of ecotoxic substances in hazard plants have been developed. The methodology is based in three steps, the characterization of the hazardousness of the substance, the delimitation of the soil and groundwater vulnerability and the identification of the protective and preventive measures of the plant. The tool has been tested with a set of storage yards of ecotoxic substances, mainly oil, in the Regione Piemonte area (Italy). The results obtained are in good agreement with the real situation of the surveyed storage yards. Thus, by using this methodology it is possible to preliminary assess the risk from uncertain data.

1. Introduction

The Council Directive 96/82/EC (1996) and 2003/105/EC (2003) concerning the control of major accidents hazards involving dangerous substances (the Seveso Directives) aim at preventing major accidents that could harm both people living or working around industrial establishments and the environment. The first one, in particular, introduces the substances that are considered to be dangerous for the environment. As a consequence, the competent Authorities in charge of applying such directive have to assess the environmental impact resulting from major accidents.

Here the problem is that the methodologies to assess the risk related to the release of dangerous substances for the environment in soil and water are very complex and require a lot of data to be applied.

For a complete risk assessment in case of ecotoxic substances, traditionally based on cost-benefit analysis, and only recently integrated in a multi-criteria decision analysis (Khadam and Kaluarachchi, 2003), it is necessary to deal with a great amount of data, not only for the categorization of the substances but also for the plant (protective/preventive measures) and soil characterization.

Often, the data available are qualitative, vague and imprecise, and the effort to obtain more precise data can result very expensive both in term of time and money.

In early works from the same authors, some efforts have been made to develop a simplified but reliable risk assessment methodology (Orso Giacone *et al.*, 2004; Demetri *et al.*, 2003), resulting in a ranking method able to support the decision making about the adequateness of preventive and protective measure, with respect to the vulnerability of the site, or the need of performing more detailed analysis. This method was found to be very effective in classifying extreme situations (very low or very high risk), but with a low sensitivity to intermediate situations, mainly due to the uncertainties in the input data. In the present study, also given the results of previous efforts, fuzzy logic is used to develop a model able to deal with those uncertainties.

Fuzzy logic is actually used to quantify the vagueness and imprecision of the interpretations (Mays *et al.*, 1997). Fuzzy systems are particularly useful to solve complex problems that, even if not referable to an algorithm, can be qualitatively described using linguistic expressions (Zadeh, 1965). A number of applications has been developed to face different environmental problems, as detailed in the following sections.

Present application constitutes a preliminary risk assessment tool able to support decision making for the management of ecotoxic substances in major risk installations.

The methodology involves three steps. In all of them, the main characteristic is that the variables involved do not have sharply defined boundaries:

- first of all, the characterization of the substance involved in the industrial accident: their hazard depends on its mobility, its toxicity and its degradability.
- secondly, the vulnerability of the soil (e.g. permeability) and the groundwater (e.g. depth);
- and thirdly, the management and plant measures to protect the environment and the people in the area (i.e. level of safety that they guarantee).

Once each of these steps has been completed by fuzzy logic application, a four level categorization of the risk of the plant is achieved: Inert (very low), Low, Medium and High risk.

In this paper, Fuzzy logic is applied to a specific case: the risk analysis of a set of storage yards, in the Regione Piemonte area (Italy) where several reference accidental scenarios involving ecotoxic substances have been identified. Four of these plants, different in extent and quality of the management, have been also submitted to an in-depth survey, in order to verify the information otherwise obtained from the risk assessment documents developed by the stakeholder.

This methodology was developed to be a tool for both public authorities and plant manager, as a support in risk informed decision making.

2. Fuzzy logic

Fuzzy systems are not a new concept; the fuzzy set theory has provided consistent and proven means to model many real-world systems as industrial plants, electrical devices, risk assessment (Chen and Pham, 2001) and, recently, occupational accidents analysis (Murè *et al.*, 2004). In particular, with reference to environmental subjects the following papers was used as reference.

Lehn and Temme (1996) developed a fuzzy tool to classify potentially contaminated sites in Germany. In 1998 van der Werf and Zimmer proposed a fuzzy indicator of the environmental impact of pesticides used in agriculture. In 1999 Mohamed and Côté developed a decision analysis based model to assess the risk posed to human health from polluted sites, where the uncertainties in the input parameters were represented by fuzzy numbers. In 2003 Hu et al. developed a tool for the selection of remediation techniques for petroleum contaminated sites, where the site characterization were performed through a fuzzy logic-based subsystem. In the end, in 2004 Uricchio et al. proposed a decision support system, based on fuzzy logic, for groundwater pollution risk evaluation.

Fuzzy logic uses linguistic variables in place and/or in addition to numerical ones. The linguistic variable is a variable which values are sentences in a natural or artificial language. Fuzzy logic is a decisional system based on rules such as “*if...then...else*”. Whereas for the classic logic every proposition must either be “*true*” or “*false*”, for the fuzzy logic an affirmation can be simultaneously “*true*” or “*false*”, with a certain degree of membership to each class (Mc Bratney and Inakwu, 1997).

A fuzzy set is a class of objects with a continuum of grades of membership defined for a given interval. Such a set is characterized by a membership function that assigns a degree of membership ranging between zero and one to each object (Cornelius T. Leondes, 1999).

In a formal definition of a fuzzy set, it can be said that X is a finite set (or space) of points, which could be elements, objects or properties:

$$X = x_1, x_2, \dots, x_n$$

Where x_i are the elements that constitute the set. Each element x_i has a particular membership value μ_i , which represents its grade of membership in a fuzzy set. The set of membership values μ_i associated with the fuzzy set occur along the continuum $[0,1]$. A fuzzy subset A of X can thus be represented as a linear combination of the following form:

$$A = \mu_A(x_1), \mu_A(x_2), \dots, \mu_A(x_n)$$

The interval, over which a fuzzy subset applies, is thus characterized by a membership function that associates each element x_i of X with a degree of membership μ_A to A .

3. Methodology

3.1. Selection of variables

As can be seen in the Figure 1, there are many parameters involved in the risk assessment of release of ecotoxic substances in a hazardous plant. Three big macro variables should be identified in order to carry out a proper risk assessment: the hazardousness of the substance, the vulnerability of the soil or the groundwater and the protective/preventive measures taken in order to protect the environment.

The hazardousness of the substances, depends on several factors and at the same time these ones depend on others. The information required to carry out a complete risk assessment is often not available and/or expensive to obtain, both in terms of time and money. As an example, there are a set of parameters such as the solubility, density, etc., that can be found in the safety cards of the substances, but other such as adsorption coefficient and hydrolysis decay (abiotic degradability) are not so easy to attain by the user of the tool.

Thus the fuzzy model was rearranged in order to be based on a reduced number of input variables: in practice, micro variables (light grey boxes in Figure 1) has been grouped in macro variables, as detailed later.

The fact that the information required by fuzzy logic is more qualitative than quantitative makes this tool a good candidate to be used in order to preliminary assess the risk of soil and water

pollution in hazardous plants. Moreover, the creation of a fuzzy model with this purpose will help the manager of the plant to use the methodology in a more easily and effectively way since the outputs will be very well-known by him.

3.2. Fuzzy process

As it can be seen in Figure 2, the proposed fuzzy model consists of different steps. During the first stage, the inputs and outputs must be defined and then converted from values to linguistic parameters by creating fuzzy sets for each of them (fuzzification process). Secondly, a set of rules must be established. These rules will allow going from the input to the output. But now the process has to be inverted: from the linguistic parameter it is necessary to attain a crisp numeric value by the defuzzification process (centroide method). Finally, an output is obtained which is directly related with a certain level of risk. All these steps are carried out using the fuzzy toolbox present in Matlab 6.0. and they are explained hereafter.

a) Inputs definition

Characterization of the substance (S)

In order to identify the substances that may pose an important risk to both humans and the environment, it is necessary to have information about relevant parameters according to their capability of endangering the subsoil and the groundwater quality. The range of such substances that are present in industrial plants is very wide, for this reason this study focuses on those substances that may poses a risk for the environment according to the European Directive 67/548/CEE, classified with risk phrases R50-R51/R53.

The hazardousness of a substance depends on its properties. As far as the hazard they might present to the soil and groundwater is concerned, the following parameters should be considered:

- Toxicity (t) including human related properties (e.g. carcinogenicity) and toxicity as far as the ecosystem in the subsoil and groundwater is concerned (e.g. toxic for aquatic organisms).

- Mobility (m) in the soil and in the aquifer. This parameter depends at the same time on a set of properties such as density of the substance, its solubility, adsorption coefficient, cinematic viscosity, vapour tension.
- Degradability (d):
 - a) Biodegradability: aerobic (measured by DOC, Dissolved Organic Carbon and TOD, Total Organic Carbon) and anaerobic (measured by methane production).
 - b) Abiotic degradability (measured by the hydrolysis duration)

Soil and ground water vulnerability (V)

In risk analysis the characterization of the area where the accidental pollution may occur is very important. The principal hydro-geological characteristics of the area and the dominant lithology of the soil should be known to define the vulnerability of the soil and the groundwater. The parameters chosen to delimitate these factors are:

- Permeability (p): it depends on the porosity of the soil and its hydraulic conductivity. According to the grade of permeability of the soil the substance may reach the aquifer or not, so this is important information in order to determine the risk for the environment.
- Depth of the groundwater (w): the deeper the aquifer is, the less dangerous the contamination will be since the substance will have more problems to get the groundwater.

Protective/Preventive Measures (M)

A part from the characterization of the substance and also of the soil and groundwater, it is very important to know if the plant is taking any kind of preventive/protective measures in order to minimize the environmental impact of a possible accident. Depending on the type of release scenario the measures to be taken will be different. Four types of release scenarios were considered:

- Underground pipelines and tanks;
- Atmospheric and pressure tanks & containers;

- Pipelines;
- Big bags, bulk containers moved by a stacker, during loading/unloading operations.

According to each scenario a reference set of protective/preventive measures have been defined and categorised on the basis of the risk level. From this, it is possible to determine the adequateness of protective/preventive measures to protect the environment.

b) Output definition

The main output of this fuzzy model is the risk level for each of the surveyed plants and situations. A function to attain the final value of this risk can be established (1). The value obtained must be defuzzificated in order to give an understandable assessment of the risk.

Risk Function

In order to assess the risk of releases of ecotoxic substances in hazard plants the risk was defined as follows:

$$R=S*V*M \quad (1)$$

with: S, hazardousness of the substance; V, soil and ground water vulnerability; M, protective/preventive measures taken in order to minimize the environmental impact of a hypothetical accident.

It is important to notice that, on the contrary of M, S and V are macro variables, since they are functions of other parameters:

Substance hazardousness function

$$S= t*m*d \quad (2)$$

Where: t is the toxicity, m, the mobility and d, the degradability of the substance

Vulnerability function

$$V= p*w \quad (3)$$

Where: p is the permeability of the soil and w the groundwater depth

The outputs coming from the hazardousness function and vulnerability function turn into the input for the risk function.

The macrovariables and their effect on the final event consequences are shown in Figure 3, through a Event Tree (Papazoglou, 1998), tool able to illustrate the sequences that from a initiating event, in this case the accidental release of ecotoxic substances, bring to the possible consequences, given the environmental and technical conditions present in the plant.

c) Fuzzy sets and intervals

For all the inputs and outputs, the fuzzy sets have been established. In most cases the used fuzzy sets have been: Low, Medium, High, associated to a quantitative description ranging from 0 to 10. But there have been cases where this classification has been altered in order to facilitate the methodology for the user. For example, in the case of the permeability of the soil, it was difficult for the user to know the data on the corresponding inputs (porosity and hydraulic conductivity) without performing an expensive soil characterisation, thus it was decided to establish four categories of permeability according to the soil particle size distribution, a parameter directly observable by the user. A similar process was undertaken to categorise other inputs on which there are limited data, as the mobility (examples in Table 1).

With reference to the protective and preventive measures, users can determine the adequateness of protective/preventive measures taken in their plants from a reference table *ad hoc* developed, where the measures have been classified according to the kind of equipment involved in the accidental event and according the level of risk. Table 2 shows the reference data used in the present study.

Finally, with all the inputs and with the use of the fuzzy model it is possible to attain a final result for the second level output, this is the risk of the plant. Four fuzzy sets have been established to define this parameter. Their interpretation is explained in Table 3, including some recommendations for each case.

d) Membership functions

A fuzzy membership function is an expression defining the grade of membership of an element x in a set A (according what has been explained in the fuzzy logic section). In contrast to the characteristic function in conventional set theory which implies that membership of individual objects in a subset as either belonging or not at all, the membership function of x in A is expressed as:

$$\mu_A(x) \rightarrow [0,1]$$

that associates with each element $x \in X$ its grade of membership $\mu_A(x) \in [0,1]$. Thus

$\mu_A(x) = 0$ means that x does not belong to the subset A ,

$\mu_A(x) = 1$ indicates that x fully belongs, and

$0 < \mu_A(x) < 1$ means that x belongs to some degree to A ; partial membership is therefore possible (McBratney, 1997).

Membership functions are a characteristic of the data set under analysis and can take on many forms (Cox, 1994). In the present work, a set of trapezoidal functions have been used in order to define the behaviour of the variables. This decision has been taken after the practical application of different types of functions to the parameters. It has been seen that the trapezoidal function was the most suitable one according to the quality of the information and the knowledge of the parameters (see Figure 4).

e) Setting up the rules

Fuzzy logic is a decisional system based on linguistic rules. Therefore, once the membership functions have been defined for all the fuzzy sets it is necessary to connect them by rules.

The most used rules are: “If x is A then y is B ”, where x is the premise and y is the consequence.

The fuzzy binary relation between A and B is expressed by the membership function $\mu_{A \rightarrow B}(x,y) \in [0,1]$, which represents the level of truth of the implication between x and y . This kind of rule can

also be composed of several inputs to attain one output; this is the case of the present work. Then the expression would be:

“If x is L and y is M and z is N, then r is K”

As an example:

“If the hazardousness of the substance is high, and if the vulnerability is high, and if the measures are low, then the risk is high”.

In order to calculate the contribution of each rule and, as a consequence, the level of true of this statement, there exist two methodologies: Correlation-Minimum Encoding and Correlation-Product Encoding (Zadeh, 1965). In the present work, the selected methodology is the one of the minimum encoding, representing the logic operator “and” as the intersection of the fuzzy subsets and thus as the minimum of the membership values:

$$\mu = \min (\mu(x), \mu(y), \mu(k))$$

Rules for all the possible combinations of all the inputs with all the outputs have been established. At an early stage, a logical approach has been followed, then the rules have been adjusted in order to make them more suitable to fetch the data obtained from previous works (Orso Giaccone *et al.*, 2004).

From the setting up of the rules it is possible to obtain the relationship among the different variables. A three-dimensional view of the relation between risk, vulnerability, hazardousness of the substances can be seen in the Figure 5; the higher the vulnerability of the groundwater and soil and the hazardousness of the substances, the higher is the risk for the plant. In Figure 6 a graphical representation of the rules is reported.

f) Defuzzification

Once the rules have been established, a value for each output can be obtained. This value will be the result of the union of diverse trapezoidal functions, as it is the result of the interaction of diverse rules that have been activated by the inputs. All of the fuzzy subsets assigned to each input variable

are combined together to form a single fuzzy subset for each output variable. The defuzzification process, that is, the conversion of the fuzzy output set (represented as a surface) to a crisp number, can be done by using different methodologies (Max-membership principle, Centroid method, medium weight, mean-max membership) (Klir and Yuan, 1996)). In the present work for the defuzzification of this area, the “centroide method” has been applied in order to attain a final value (see Figure 6). According to this method, the crisp value of the output variable is computed by finding the variable value of the centre of gravity of the membership function for the fuzzy value. When the crisp value has been obtained it is necessary to translate it again to a linguistic parameter by using the classification in Table 3.

4. Application of the methodology to a set of storage plants

4.1 Storage yards

The test of the method has been carried out applying the methodology to a set of different storage yards of ecotoxic substances, mainly oil, in the Regione Piemonte area (Italy), where several accidental scenarios have been identified with potential impact on the environment.

As it has been said the studied industrial plants are dedicated to the storage and subsequent trade of the products, with similar operational procedures:

- Arrival of the product from the central plant to the storage yard by pipeline or tanker;
- Unloading of the cargo to the underground or atmospheric tanks;
- Loading of the product to the tanker;
- Transport and unloading of the product to the client.

Four of these plants, different in extent and quality of the management, have been also submitted to an in-depth study, in order to verify the information collected from the risk analysis and to check the appropriateness of the method.

The surveyed plants have been labelled as Plant A, B, C and D in order to keep the confidentiality of the results. So as to be able to understand the results presented in the next section, a brief scheme of the main characteristics of them is presented in Table 4.

4.2 Results

Taking into account the information gathered during the survey of the installations, it is possible to preliminarily assess the risk of release of ecotoxic substances, in order to identify the criticalities of the plant and its management.

In order to obtain the risk level three steps have been followed.

- First, the hazardousness of the substance has been defined by giving values to the toxicity, mobility and degradability of the substance. In the plant A, used here as a worked example, the substance was gas oil. According to what was said in the safety card, the values presented in Table 5 have been given to the parameters characterising the substance. With these values the output for the hazardousness of the substance was found to be 6.96, which corresponds to a medium-high fuzzy subset.
- Secondly, the vulnerability of the soil and groundwater has been determined by the combination of the values given to the permeability and the depth of the ground water (see Table 6). The value obtained for the vulnerability has been 5.62 which corresponds to “Vulnerable”.
- Thirdly, the level of protective and preventive measures has to be established. In this case, as it can be seen in Table 4, the measures taken are quite poor, so a value of 1.5 has been established, which corresponds to “insufficient”, because the plant does not reach the minimum-risk measures indicated in Table 2.
- Finally, with the value of all the macro variables it is possible to obtain the final value for the risk as it is presented in Table 7. Following the same process for the other surveyed plants an estimation of the risk of soil pollution has been carried out. The results can be seen in Table 8.

- As it can be seen in Figure 6, the column on the right hand indicates the crisp value for the risk calculated by the fuzzy logic toolbox of Matlab 6.0. The translation of the crisp value into the linguistic code can be observed in the Figure 4 (previously commented).

Given the direct observation of the surveyed plants and the expert judgement, the results have shown a good agreement plants, this despite the apparent oversimplification of the risk function. The tool developed appears to overcome the lack of sensitivity shown by the method previously developed by the authors.

Conclusions

The application of the fuzzy logic to the assessment of risk of pollution derived from the presence of ecotoxic substances in hazard plants allows making more affordable a complex algorithm of analysis in order to obtain a risk assessment given an incomplete and reduced input data set.

The main macro variables of the model are:

- the hazardousness of the substance,
- the vulnerability of the soil and groundwater and
- the protective and preventive measures taken.

For both sets (macro and micro variables) fuzzy subsets and membership functions have been established. A set of rules to link all the variables have been set up and from there by the defuzzification process, a crisp value can be obtained.

The methodology developed has been successfully applied to a set of storage plants in the Regione del Piemonte (Italy). The use of this model allows a realistic preliminary assessment of the risk of accidental releases. But, it is also important to highlight the user-friendly design of the tool and the effectiveness of achieving very appropriate results in a short time.

The methodology can be used not only by public authorities but also for the same plant managers, since it is a method that allows the evaluation of the risk level of the site and also to see whether the safety measurements are suitable. This application has been developed as a preliminary risk

assessment tool, able to highlight critical situations and the need for more in-depth and complete analysis.

List of symbols

A	Fuzzy subset of X
d	Degradability of the substance
m	Mobility of the substance
M	Protective/Preventive Measures
p	Permeability
R	Risk function
S	Hazardousness of the substance
s	Soil or groundwater vulnerability
t	Toxicity
V	Vulnerability
w	Groundwater depth
X	Finite set of objects
x	Element of the X set
$\mu_A(x)$	Grade of membership of element x in fuzzy subset A

References

- Chen, G., Pham, T. (2001). Introduction to Fuzzy sets, fuzzy logic and fuzzy control systems. CRC Press.
- Chen Z., Huang G.H. and Chakma A. (1998). Integrated environmental risk assessment for petroleum-contaminated sites – a north American case study. *Wat. Sci. Tech.* 38. 131-138
- Cornelius T Leondes (1999). Fuzzy theory systems. Techniques and applications. Volume 1. Chapter 10. Academic Press, Inc. Orlanda, FL, USA.
- Cox, E. (1994). The Fuzzy Systems Handbook: A Practitioner's Guide to Building, Using, and Maintaining Fuzzy Systems. Academic Press, San Diego.

Demetri K., Piccinini N., Ariano P., Orso Giacone M., Schellino G. (2003). Rapid ranking criteria for the assessment of pollution risk arising from accidental releases in relevant hazard plants. Proc. ICheaP-6, the sixth Italian Conference on Chemical and Process Engineering, Pisa, Italy.

Hu Z., Chan C.W. and Huang G.H. (2003). A fuzzy expert system for site characterisation. *Expert Systems with applications* 24, 123-131.

Khadam, Ibrahim M.; Kaluarachchi, Jagath J., (2003). Multi-criteria decision analysis with probabilistic risk assessment for the management of contaminated ground water. *Environmental Impact Assessment Review* 23 (6) 683-721.

Klir, G.J., Yuan, B., (1996): eds. Fuzzy sets, fuzzy logic and fuzzy system: Selected papers by Lotfi A. Zadeh. World Scientific Singapore, 1996.

Lark, R.M. and Bolam, H.C. (1997). Uncertainty in prediction and interpretation of spatially variable data on soils. *Geoderma* 77, 263-282.

Lehn K. and Temme K.-H. (1996). Fuzzy classification of sites suspected of being contaminated. *Ecological modelling* 85 51-58.

Mays, M.D, Bogardi, I., Bardossy, A. (1997). Fuzzy logic and risk-based soil interpretations. *Geoderma* 77, pp. 299-315.

Mc Bratney, A.B and Inakwu O.A. Odeh (1997). Application of fuzzy sets in soil science: fuzzy logic, fuzzy measurements and fuzzy decisions. *Geoderma* 77, pp. 85-113.

Mohamed A.M.O. and Côté K. (1999). Decision analysis of polluted sites – a fuzzy approach. *Waste management* 19 519-533.

Murè, S., Demichela, M., Piccinini, N. (2004). Risk assessment of occupational accident through fuzzy model. Proceedings of the International Conference on Probabilistic Safety Assessment and Management, PSAM 7, Berlin, 58-63.

Orso Giacone M., Demichela, M., Piccinini, N., Pirani, R., Ariano, P.F. (2004). Validation of the “RAES” ranking method. CISAP-1 1st Italian Convention on Safety & Environment in Process Industry November 28-30, Palermo, Italy.

Papazoglou, Ioannis A. (1998). Mathematical foundations of event trees *Reliability Engineering and System Safety* 61(3) 169-183.

Seveso II Directive (1996). Council Directive 96/82/EC of the European Parliament on the control of major-accident hazards involving dangerous substances, *Official Journal No. L 010* of 14 January 1997.

Seveso III Directive (2003). Council Directive 2003/105/EC of the European Parliament amending Council Directive 96/82/EC on the control of major-accident hazards involving dangerous substances, *Official Journal No. L 345* of 16 of December 2003.

Uricchio V.F., Giordano R., Lopez N. (2004). A fuzzy knowledge-based decision support system for groundwater pollution risk evaluation. *Journal of environmental management* 73 189-197.

van der Werf and Zimmer (1998), An indicator of pesticide environmental impact based on a fuzzy expert system. *Chemosphere*, 36 (10) 2225-2249.

Zadeh. L.A. (1965). Fuzzy sets. *Information and Control* 8, 338-353.

Caption for figures

Figure 1. Risk assessment scheme for releases of ecotoxic substances in hazard plants.

Figure 2. Representation of the fuzzy methodology.

Figure 3. Event tree describing the effects of the model variables in case of accidental release of ecotoxic substances

Figure 4. Fuzzy subsets for a generic variable (membership functions).

Figure 5. Three-dimensional representation of the risk, vulnerability and substance hazardousness.

Figure 6. Application of the Centroid Method to the inputs.

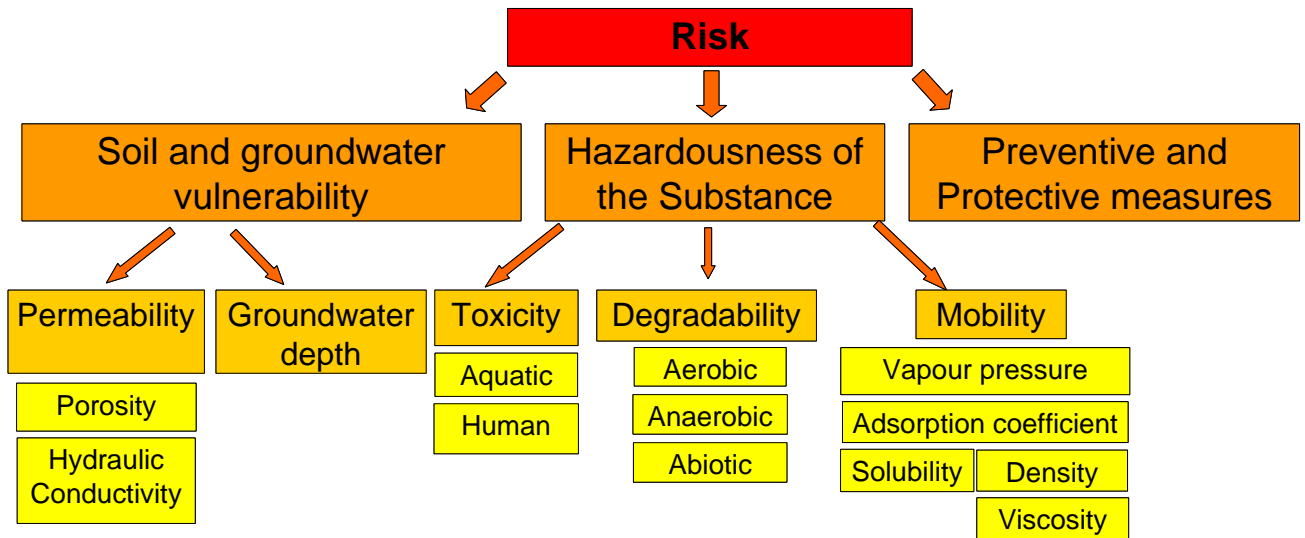


Figure 1

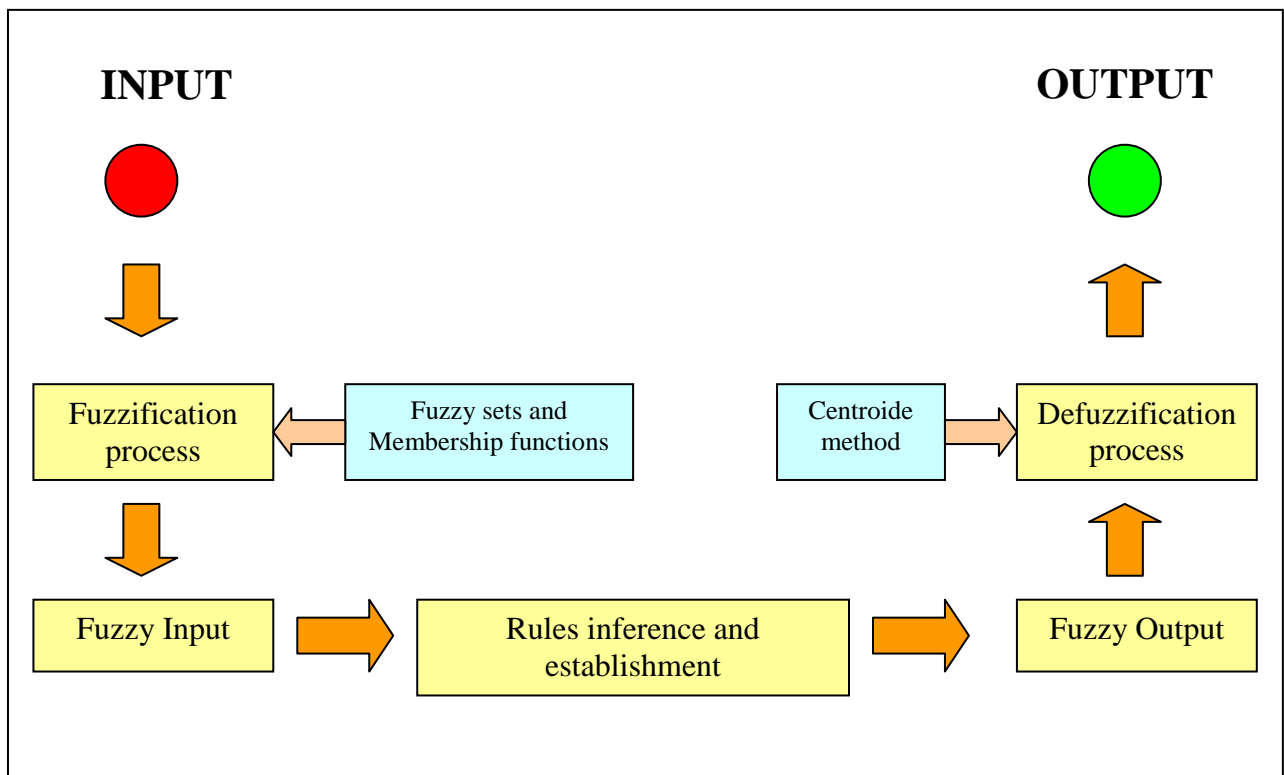


Figure 2

INITIATING EVENT	PROTECTIVE MEASURES	HAZARDOUSNESS OF THE SUBSTANCE	VULNERABILITY OF GROUNDWATER OR SOIL	CONSEQUENCES
------------------	---------------------	--------------------------------	--------------------------------------	--------------

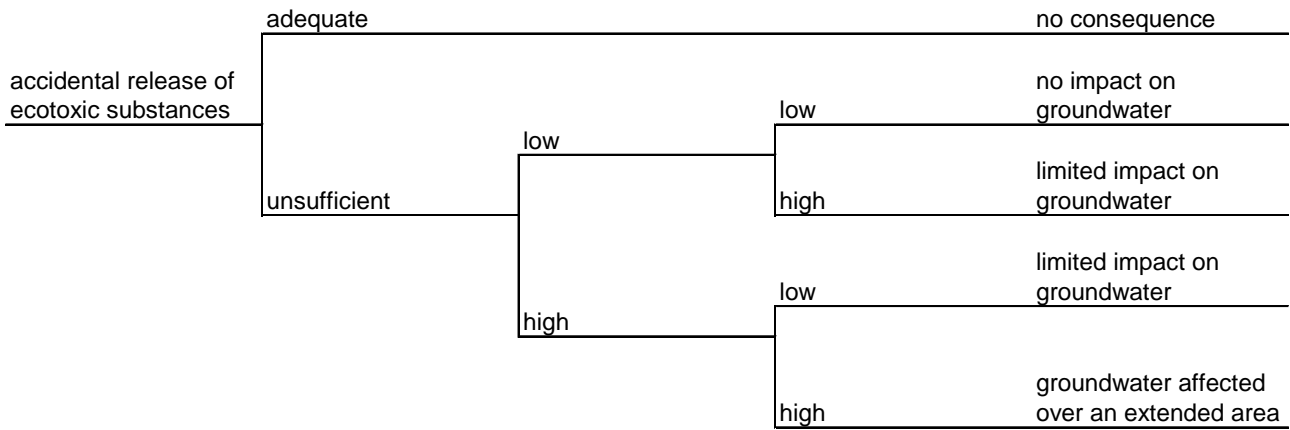


Figure 3

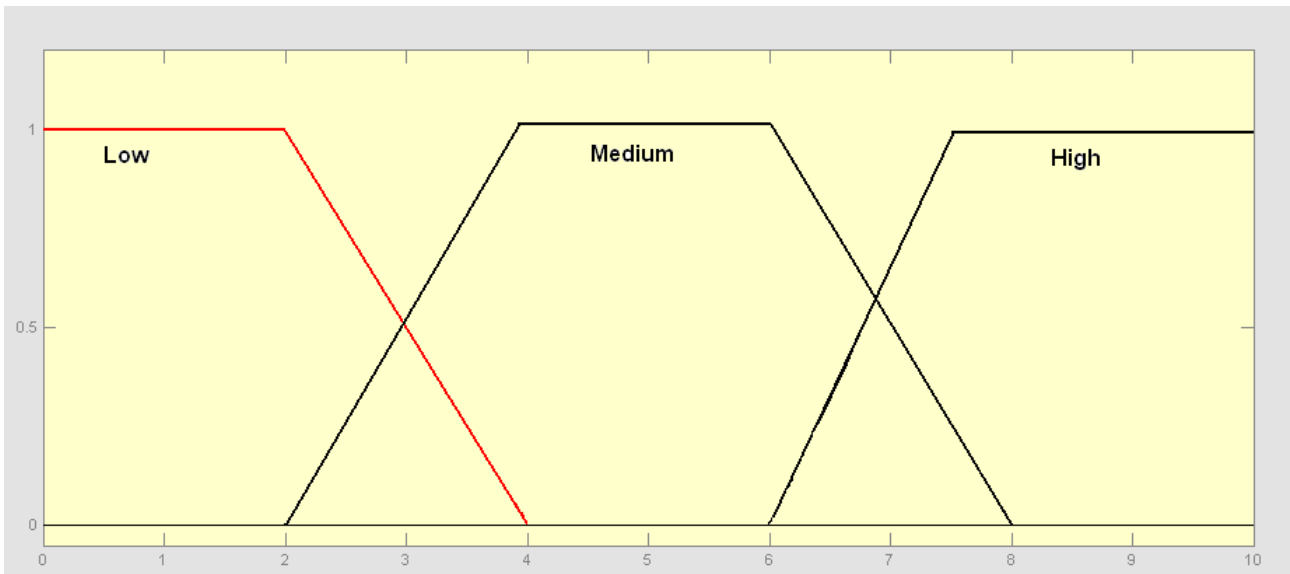


Figure 4

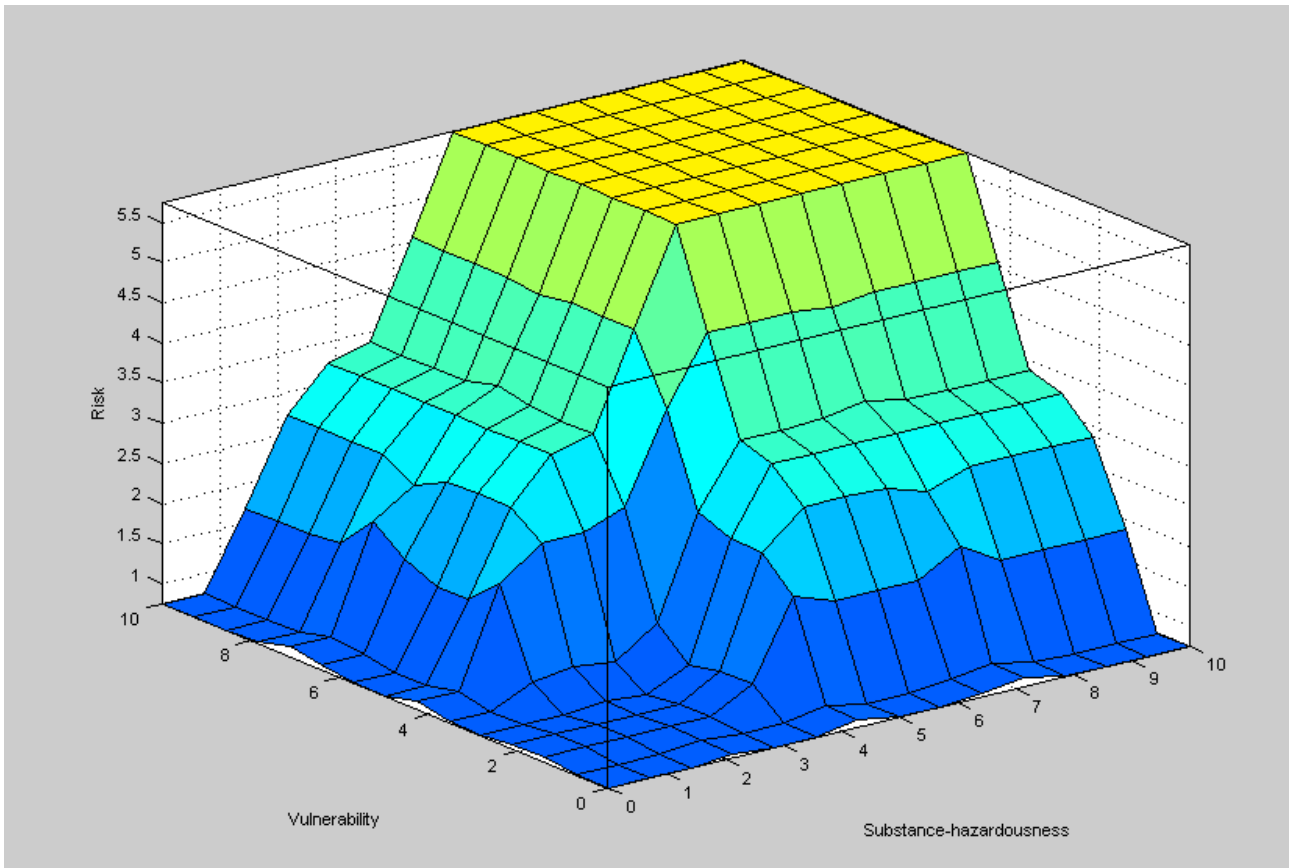


Figure 5

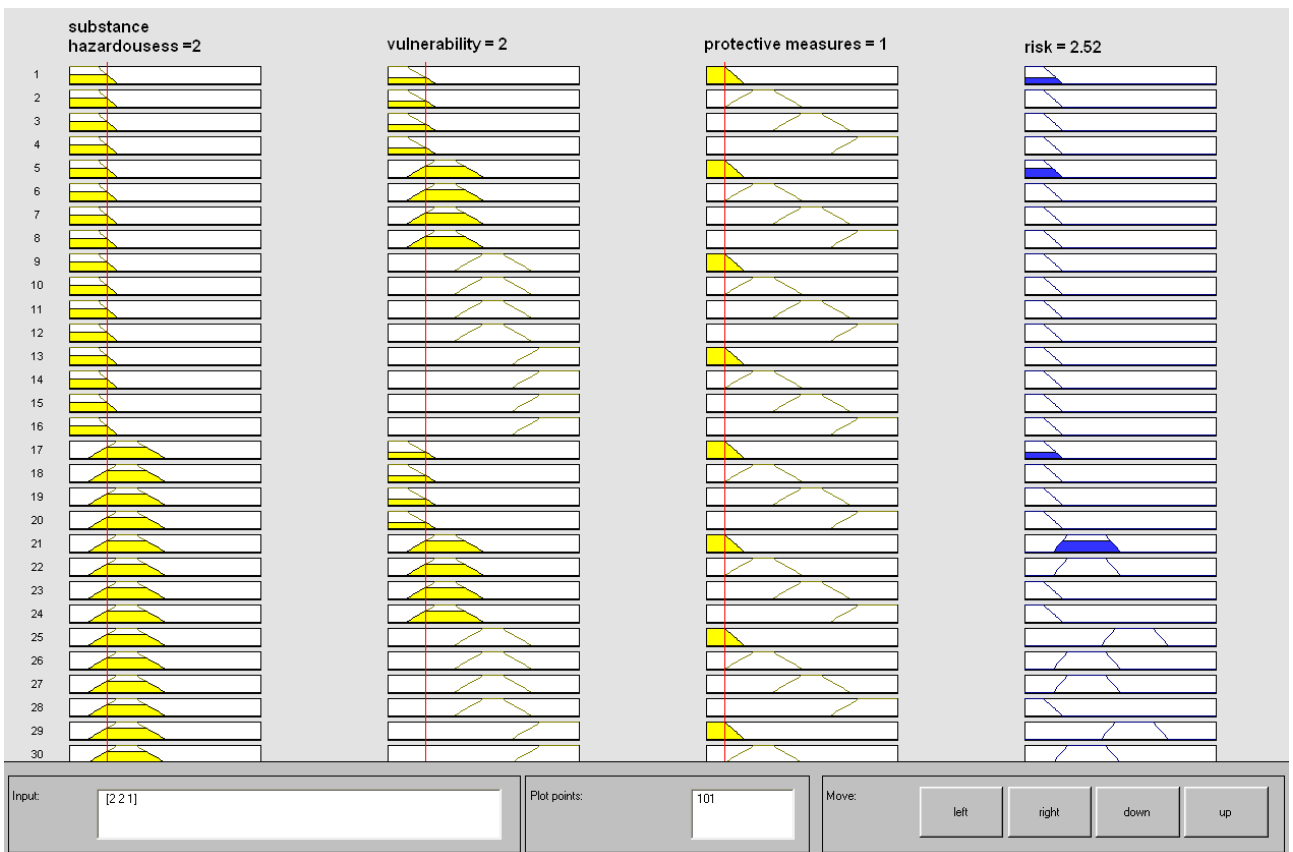


Figure 6

Tables

Table 1. Fuzzy sets for the inputs.

General Inputs	low	medium	high	
0-10	0-4	2-8	6-10	
Mobility	hydrocarbons	Pesticides & herbicides	salts	
0-10	0-4	2-8	6-10	
Permeability	Claim (low)	Slime (medium)	Sand (high)	Gravel (very high)
0-10	0-2.5	1.5-5.5	3.5-7.5	6.5-10

Table 2. Classification of preventive and protective measures adopted as reference in the present study

Equipment (Scenario)	Risk level	Reference preventive and protective measures
Atmospheric tanks	Low	<ul style="list-style-type: none"> • Cathodic protection • Containment basin • Level indication
	Medium	<ul style="list-style-type: none"> • Rust preventer application • Vitrification of tank walls
	High	<ul style="list-style-type: none"> • High and very high level alarm • High level interlock systems • Valve operated by remote control • Pressure sealing test
Underground tanks	Low	<ul style="list-style-type: none"> • tank with “double wall” structure • level indicator • Vitrification of tank walls
	Medium	<ul style="list-style-type: none"> • interlock system to avoid tank overflow • periodical sealing tests • periodical maintenance operation • toxic gas monitoring system
	High	<ul style="list-style-type: none"> • continuous monitoring system for accidental leakages • underground barrier with water-bearing stratum captation • Air Sparging protection system • barrier walls in clay or other materials for oil absorbing
piping	Low	<ul style="list-style-type: none"> • Coating with bituminous band for underground piping • Sealing test with penetrating liquids
	Medium	<ul style="list-style-type: none"> • Intercepting valves for isolation purposes • Shock adsorbers for water hammer
	High	<ul style="list-style-type: none"> • Underground barrier with water-bearing stratum captation • Cloth in oil absorbing materials
Loading unloading area	Low	<ul style="list-style-type: none"> • Concrete flooring • Floors with adequate slope and canalization/collecting systems in case of accidental release
	Medium	<ul style="list-style-type: none"> • Sump pit for meteoric waters with oil separation • Sewer trunk line for water and oil mixture and backwashing plant • Overfilling system with optical probes for tanker
	High	<ul style="list-style-type: none"> • Underground barrier with water-bearing stratum captation • Cloth in oil absorbing materials

Table 3. Risk interpretation scheme.

RISK	Environmental impact	Risk Management Measures
NEGLECTABLE	No environmental impact	Damages to the environment and to human health are negligible if the safety levels are maintained in time and a correct management system is implemented.
LOW	Potential environmental impact	The three variables (M, V, S) are compensated one with the others. Any of them is so important to make the situation extreme. But it is important to keep update the protective/preventive measures.
MEDIUM	Significant potential pollution	The characteristics of the soil and sub-soil and of the substance determine the possibility of causing significant pollution. The measures are very important at this stage.
HIGH	Significant pollution	The hydro geologic characteristics of the site determine a high probability of significant pollution to vulnerable environmental and territorial elements in the case of accidental spill.

Table 4. Main characteristics of the studied plants.

	Plant A	Plant B	Plant C	Plant D
Substance	Gas oil	Gasoline	Benzotriazole	Gasoline
Mobility	It can penetrate in the soil, but it is not soluble in water	It is not mobile and it remains into the soil. Not soluble in water	It is not soluble in water.	It is not mobile and it remains into the soil. Not soluble in water.
Toxicity	R40-65-52/53	R45-65	R53	R45-65
Degradability	Persistent in anaerobic conditions. Not very biodegradable	Very low degradability	Very slow biodegradation in aerobic conditions	Very low degradability
Permeability	Lime/sand mixture	Lime/sand mixture	Lime/sand and lime/pebble mixtures	Lime/sand mixture
Depth	2-5 m	3-6 m	10 m	30 m
Measures	<ul style="list-style-type: none"> ▪ Interception valves manually operated. 	<ul style="list-style-type: none"> ▪ Rust preventer application. ▪ Concrete flooring. ▪ High and very high level alarm and interlock systems to avoid tank overflow. ▪ Containment basin. 	<ul style="list-style-type: none"> ▪ Concrete flooring. ▪ Containment basin. ▪ Automatic interlock system with pump switch off. ▪ Hydraulic barriers. ▪ Air sparging protection system. ▪ Level indicators. ▪ Piezometric aquifer monitoring. 	<ul style="list-style-type: none"> ▪ Containment basin. ▪ Interlock valves on piping. ▪ High and very high level alarm systems to avoid tank overflow.

Table 5. Results for toxicity, mobility and degradability from plant A.

Parameters	Fuzzy subset	Absolute value
Toxicity	Medium	6.5
Mobility	Medium	4
Degradability	Low	3

Table 6. Results for permeability and depth from plant A.

Parameters	Fuzzy subset	Absolute value
Permeability	Slime-sand	5
Depth	Low	3.5

Table 7. Results for risk in plant A.

Parameters	Fuzzy subset	Absolute value
Hazardousness	Medium-High	6.96
Vulnerability	Vulnerable	5.62
Measures	Insufficient	1.5
Risk	High	8.61

Table 8. Results for risk in all the surveyed plants

Name	Crisp value	Risk
Plant A	8.61	High
Plant B	3.25	Low
Plant C	5.75	Medium
Plant D	5.75	Medium