

The Sentinel Panel of Districts: Tanzania's new integrated surveillance system

Gregory S Kabadi^{1,2} Honorati Masanja¹ on behalf of SPD partners and implementers³

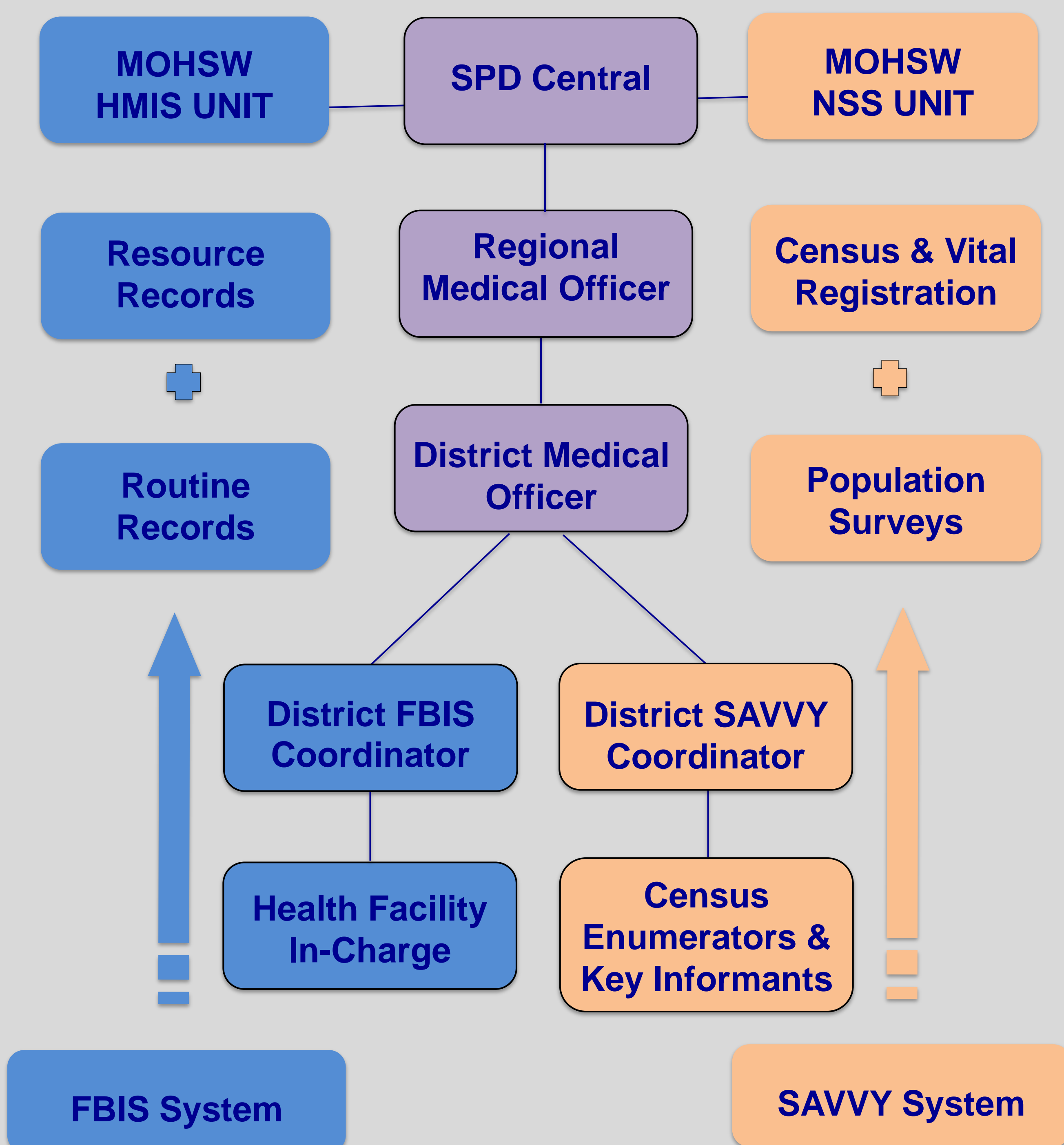
¹ Sentinel Panel of Districts, Ifakara Health Institute, Dar es Salaam, Tanzania ² Faculty of Infectious & Tropical Diseases, London School of Hygiene & Tropical Medicine, London, UK

³ Ifakara Health Institute, National Institute for Medical Research, National Bureau of Statistics, Ministry of Health and Social Welfare, Tanzania

1 INTRODUCTION

- There is a general consensus for using the "district" as unit for design and analysis for evaluation of large-scale programmes especially in developing countries

SPD Management & Categories of data collected



FBIS = Facility-based Info System: 23 SAVVY Districts + 4 HDSS sites
SAVVY = Sample Vital Registration with Verbal Autopsy; 23 Districts

5 TAKE HOME MESSAGE

- Powerful information platform to generate population-based demographic, health & mortality data PLUS facility-based data
- National sample; results stratified by residence & zone
- Provides comprehensive monitoring for all TZ Health Sector Strategic Plan III indicators
- Provides opportunity for fundamental & operational research, including health systems intervention evaluation

2 OBJECTIVE

- To generate health facility and population-based information from Tanzania's 27 nationally representative districts

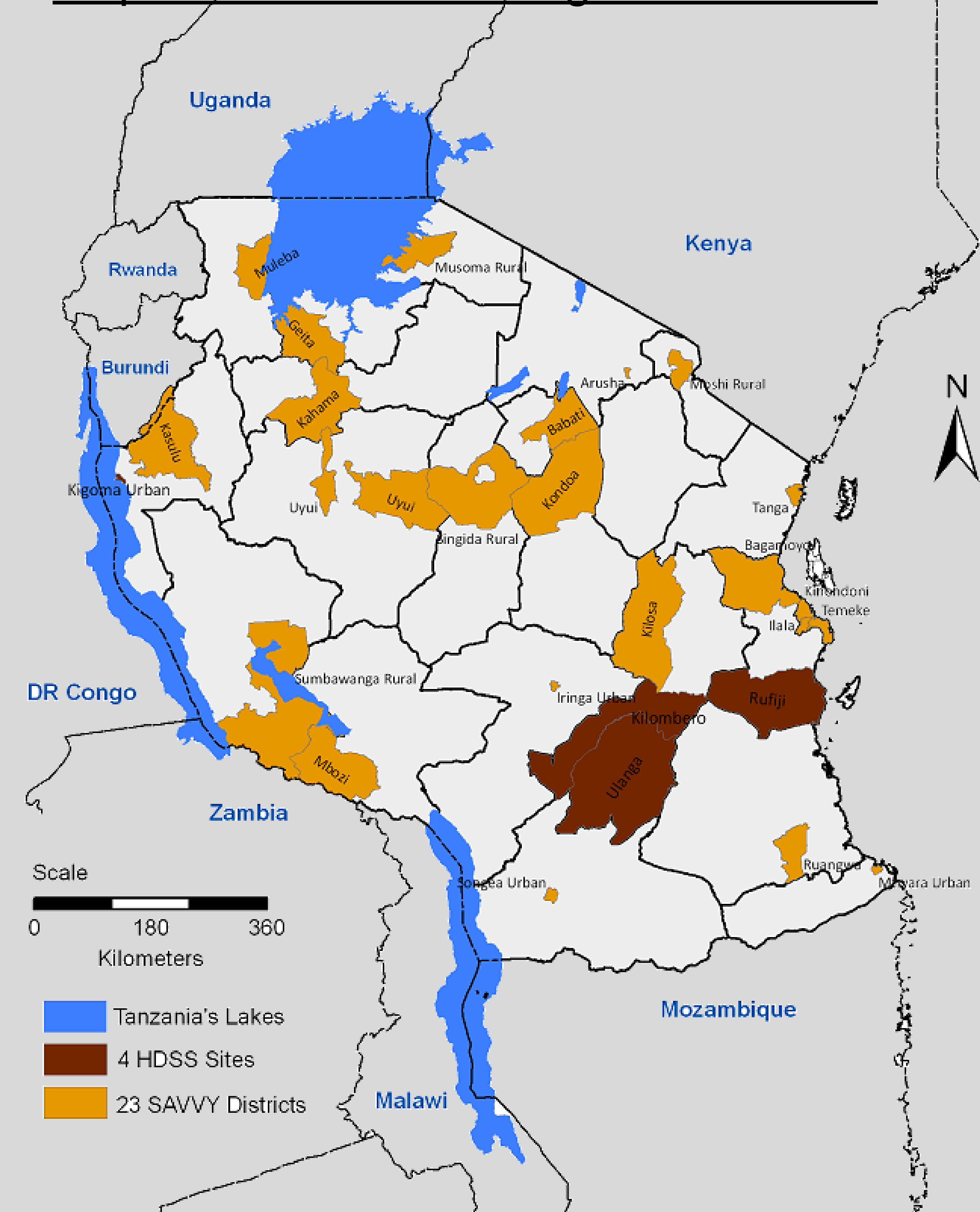
4 METHODS

- Monthly, FBIS coordinators collect aggregated summaries of indicators from all health facilities
- Data entered and managed using District Health Information System
- Continuously, trained key informants in communities report all births and deaths
- SAVVY coordinators verify reported vital events & conduct verbal autopsy (VA) interviews
- Trained physicians ascertain causes of death from VAs using WHO's ICD-10 codes
- Centralized data analysis & reporting

3 DESIGN & SAMPLING

- 2-stage probability proportional to size sampling from Tanzania's Master Statistical Sample: districts at zonal level, enumeration areas (EA) at district level: ALL households in selected EAs, ALL health facilities in districts – Urban & Rural
- ~2% of population; ~20% of all Mainland health facilities

Map of Tanzania showing SPD districts



Acknowledgement: SPD receives funding from: UK's Department for International Development, Centers for Disease Control and Prevention, Swiss Agency for Development & Cooperation, Norwegian Agency for Development & Cooperation and The Irish Aid