



Durham E-Theses

Gold jewellery in Ptolemaic, Roman and Byzantine Egypt.

Ogden, Jack M.

How to cite:

Ogden, Jack M. (1990) *Gold jewellery in Ptolemaic, Roman and Byzantine Egypt.*, Durham theses, Durham University. Available at Durham E-Theses Online: <http://etheses.dur.ac.uk/1457/>

Use policy

The full-text may be used and/or reproduced, and given to third parties in any format or medium, without prior permission or charge, for personal research or study, educational, or not-for-profit purposes provided that:

- a full bibliographic reference is made to the original source
- a [link](#) is made to the metadata record in Durham E-Theses
- the full-text is not changed in any way

The full-text must not be sold in any format or medium without the formal permission of the copyright holders.

Please consult the [full Durham E-Theses policy](#) for further details.

The copyright of this thesis rests with the author.
No quotation from it should be published without
his prior written consent and information derived
from it should be acknowledged.

**Gold Jewellery in Ptolemaic, Roman and Byzantine
Egypt.**

In two volumes

Volume 2 - Figures.

Jack M. Ogden

Ph.D. Thesis

Universtity of Durham, Department of Oriental Studies.

© 1990

The copyright of this thesis rests with the author. No quotations from it should be published without
his prior written consent and information derived from it should be acknowledged.



25 JUN 1991

TABLE OF CONTENTS

VOLUME 2

LIST OF FIGURES.....	1
FIGURES	13

LIST OF FIGURES.

1. A limestone statue of a female votary. 6th century BC. From Naukratis. (Museum of Fine Arts, Boston. 88.735.)
2. A gold disk with filigree and granulation. 6th - 5th century BC. Egypt. (MMA, New York.)
3. An unfinished gold ring. 6th - 5th century BC. From Tanis. (BM 87. 1-8. 578.)
4. A part of a gold chain. c. 2nd century BC. From Tanis. (British Museum.)
5. A gold ring with oval bezel depicting Eros. 5th century BC. From the Delta. (*BMCR* 40.)
6. A gold ring with bezel depicting a cow and calf. c. 5th - 4th century BC. Egypt. (After Zahn 1929.)
7. 2 gold 'deity-bust' rings. 1st century AD. Egypt. (Ex. Coll. Guilhou.)
8. A garnet and gold two-finger ring. 3rd century AD. (Ashmolean Museum. 1953.52.)
9. A painted funerary portrait with added gold-foil decorations. 1st century AD. Hawara. (Cleveland Museum of Art. 71.137.)
10. A plaster funerary mask of a young man. 3rd century AD. (British Museum. 30723.)
11. A plaster funerary mask of a young man. 3rd century AD. (Private collection. After Grimm 1974.)
12. A painted funerary portrait of a woman. 1st century AD. Hawara. (Royal Scottish Museum. 1951.160.)
13. A bronze Aphrodite Anadyomene, probably a casting antetype. c. 1st century BC. Galjub, Egypt. (After Ippel 1922.)
14. An elaborate gold hair ornament. (Schimmel Collection, New York.)
15. Half of a gold diadem. 1st century AD. Naukratis. (*BMCIJ* 3045.)
16. A gold diadem. Late 2nd - 3rd century AD. (Allard Pierson Museum, Amsterdam. 7001.)
17. Gold jewellery from the Sâ el-Hagar hoard. Late 2nd - 3rd century AD. (After Mariette 1871.)
18. A group of Ptolemaic gold jewellery with animal-head terminals. Late 4th - 2nd centuries BC. (MMA. 35.6.1-2 (griffin earrings), 10.130.1507 (ibex earrings), 35.6.3 (necklet).)
19. Bronze chasing tools and chisels. c. st century BC. From Galjub. (After Ippel 1922.)
20. Gilded terracotta jewellery. 3rd century BC. Alexandria. (After Breccia 1912.)
21. A gold Herakles knot bracelet. c. 3rd century BC. From the Tûkh el-Qarâmûs treasure. (CM CG 52093.) Detail of knot.
22. A gold crescent pendant. c., 1st century BC?. From the Tûkh el-Qarâmûs treasure. (CM JE 38397.)
23. Gold cowrie shell beads. Probably Ptolemaic. From the Tûkh el-Qarâmûs treasure. (CM JE 38410/11.)
24. A gold and garnet ring with serpent surround. 1st century BC/AD. (Christies 1987.)
25. A group of gold jewellery from Boscoreale. 1st century AD. (After Sambon 1905.)
26. A pair of gold and emerald amphora drop earrings. 2nd - 1st century BC. From el-Ashmûnein. (*BMCIJ* 2332 - 3.)
27. A gold and emerald bracelet (bezel missing). c. 3rd - 4th century AD. From el-Ashmûnein. (*BMCIJ* 2822.)
28. Gold earrings. 1st - 3rd centuries AD. From the Delta. (After Clèdat 1912.)
29. Seal impression from a Roman gold ring showing Leda and the swan. c. 2nd century AD. Alexandria. (After Rowe 1942.)
30. Jewellery tomb group. c. 2nd century AD. Alexandria. (After Rowe 1942.)
31. A gilded cartonnage funerary mask. 1st century AD. Hawâra. (Brooklyn Museum. 69.35.)
32. A bronze statuette of Aphrodite c. 1st century AD. Lower Egypt. (Walters Art Gallery. 54.966.)
33. A lapis lazuli intaglio. One side shows Aphrodite Anadyomene, the other has the inscription 'I am Hathor'. (Hannover. K 1689.)
34. An angular gold ring of late Roman form with Egyptian bezel design. Late 3rd century AD. (After *Ars Antiqua* 1961.)
35. Gold jewellery from a hoard found at Hadra, Alexandria. c. 300 AD. (After Breccia 1932.)
36. Gold necklet elements. c. 300 AD. (Benaki Museum, Athens. 106/26 - 29.)
37. Coptic textiles showing jewellery in wear. (Cleveland Museum of Art. 53.18 and 82.73.)
38. A gold openwork necklet set with emeralds and sapphires. c 600 AD. From the Asyût treasure. (Staatliche Museum, Berlin. 30219.508c)
39. A gold snake bracelet. 1st - 3rd century AD. One of a pair said to be part of the Asyût treasure. (British Museum)
40. Details of the gold coin-set torc in fig. 366 and the bracelet in fig. 498. c. 600 AD.
41. The remains of an ancient gold-mining settlement at Atûd in the Eastern Desert.
42. Grinding mills for gold ore. Roman. Atûd, Eastern Desert.
43. Grinding mills for gold ore. Ptolemaic. Atûd, Eastern Desert.
44. Ptolemy VI shown as the Nome god of Napata bringing gold from Nubia. Relief at Philae. (After Junker 1958)
45. Gold bars from Tôd. c. 19th century BC. (After de la Roque 1953.)
46. A gold ingot with stamps. C 300 AD. From Abuqîr. (*BMCIJ* 3148.)
47. A circular gold ingot. c. 300 AD. From Hadra, Alexandria. (After Breccia 1932.)

48. A gold *nefer nub* coin. c. 350 BC.
49. A gold octadrachm of Ptolemy II.
50. A pair of gold earrings. 2nd - 3rd century AD. From Egypt. (Private collection.)
51. 2 gold 'amulet rings'. 1st - 3rd century AD. Egypt. (Private collection.)
52. A gold Medusa necklet. 3rd century AD. Egypt. (Private collection.)
53. A tapered hoop earring of thin sheet gold. 1st - 2nd century AD. Egypt. (Private collection.)
54. Gold and glass necklet elements. 3rd century AD. (Private collection.)
55. A gold cross. c. 600 AD. Alexandria. (BM AF356.)
56. A pair of gold earrings. c. 600 AD. From Asyût. (BM 1916.7-4.4)
57. A gold ring with serpent head and Isis bust. 1st century AD. (BMCR 244.)
58. A gold 'deity-bust' ring showing Isis, Sarapis and Harpokrates. 1st century AD. (BMCR 245.)
59. A pair of gold 'S-hoop' earrings threaded with pearls. 1st century AD. (BMCI 2679.)
60. A relief from the tomb of Petosiris. c. 300 BC. (After Lefebvre 1923.)
61. The emerald mining area of Sikait. Eastern Desert.
62. The hexagonal crystal form of emerald.
63. A painted funerary mask showing emerald and onyx beads. 1st century AD. Meir. (CM CG 33130)
64. A gold and garnet Herakles knot diadem. c 2nd century BC. (CM JE 67881.)
65. A detail of necklet composed of openwork sections. c. 600 AD. From the Asyût treasure. See fig. 297. (Staatliche Museum, Berlin. 30219. 505.)
66. A cabochon sapphire intaglio with a monogram. c 6th century AD. (University College, London. After Petrie 1927.)
67. A banded onyx bead. 2nd century BC to 1st century AD.
68. A peridot intaglio depicting Aphrodite Anadyomene. Hellenistic. From Egypt. (Staatliche Münzsammlung, Munich. 354.)
69. A pair of coral and silver earrings. 3rd century AD. Qustul. (After Emery 1948.)
70. A fragment of a gold snake bracelet with the chased letters SA. 1st century AD. (Christies 1987.)
71. A gold hinge-bezel bracelet with applied stamps. 3rd century AD. (Hamburg. 1926.245) With detail of stamps.
72. A wall painting showing goldsmiths at work. 18th dynasty. Tomb of Rekhmara, Thebes.
73. Details of a wall painting from Pompeii showing Eros as jewellers. 1st century AD.
74. A print showing Indian jewellers at work. 19th century. (British Museum.)
75. A relief from the tomb of Petosiris. c. 300 BC. (After Lefebvre 1923.)
76. A relief from the tomb of Petosiris. c. 300 BC. (After Lefebvre 1923.)
77. A mongolian jeweller at work. 20th century. (After Boyer 1952.)
78. Metalworker's burnishing tools. Tanis. 2nd century AD. (MMA.)
79. A diagram showing finger terminology.
80. Detail from a relief showing a cartouche shaped seal ring. Time of Nectanebo I. Memphis. (Fitzwilliam Museum, Cambridge. E.5.1909.)
81. The left hand of Tutankhamun showing rings. (Griffith Institute, Oxford.)
82. A limestone statue of a man showing ring in wear. 4th century AD. Cyprus. (Cesnola Collection, MMA.)
83. A detail from a cartonnage showing rings in wear. (British Museum. E 29585)
84. A detail of a roman plaster figure of a man showing rings in wear. Roman period. Kharga Oasis. (MMA.)
85. A roman marble statue of a man showing a ring on the upper joint of his finger. (Alexandria Museum. R431.) With detail.
86. A gold ring inscribed EPAGATHO. 2nd - 3rd century AD. (Private collection.) With detail of inscription.
87. A gold ring with inscription to Sarapis. Late 3rd century AD. (University College, London. After Petrie 1927.)
88. A gold ring inscribed EPAGATHO. Late 3rd - 4th century AD. (Alexandria Museum.)
89. A gold ring with monogram and eagle. 6th century AD. (Victoria and Albert Museum. After Oman 1930.)
90. A silver ring with monogram and eagle. 6th century AD. University College, London. (After Petrie 1927.)
91. A gold signet ring of the priest Totoes. Late 3rd - early 2nd century BC. (Ex. Coll. Harari.)
92. A gold ring with the seal of Iahhotpe. Uncertain date. (Louvre.)
93. A gold, emerald and enamel box-bezel ring. 1st century BC/AD. (CM CG 52293.)
94. A gold and glass box-bezel ring. 1st century BC/AD. (Rhode Island School of Design. 22.230.)
95. A gold and garnet box-bezel ring. 1st century BC/AD. (Staatliche Antikensammlung, Munich. 11004.)
96. A gold and emerald ring with serpent surround. 1st century BC/AD. (Private collection. New York.)
97. A gold and emerald ring with serpent surround. 1st century BC/AD. (Benaki Museum, Athens. 1698.)

98. A detail of a cartonnage of a woman showing a serpent ring on her right hand. 1st century AD. Akhmîm. (Allard Pierson Museum, Amsterdam. 732.)
99. A detail of a cartonnage of a woman showing a serpent ring on her right hand. 1st century AD. Akhmîm. (CM CG 33270.)
100. A diagram of the main forms of snake rings.
101. A gold ring with terminals in the form of dilated cobras. c. 1st century AD. (Private collection.)
102. A gold and garnet ring with snake-head terminals. 2nd - 3rd century AD. Alexandria. (*BMCR* 814.)
103. A gold ring with uraeus terminal. 1st century BC/AD. (Staatliche Museum, Berlin. 30219, 522.)
104. A gold ring with uraeus terminal. 1st century BC/AD. (Benaki Museum Athens. After Segall 1938.)
105. A silver ring with melon-like terminals. 1st century BC/AD. (After Christies 1979.)
106. A gold 'deity bust' ring with Isis, Nephthys and Harpokrates. 1st century AD. (*BMCR* 245.)
107. A gold deity bust ring with Isis and Nephthys terminals. 1st century AD. (After Berge and Alexander 1985.)
108. A gold ring with Isis and Osiris terminals. 1st century AD. (Private collection.)
109. A diagram showing the shape and proportions of circular bezel rings.
110. A gold ring with the bezel depicting Aphrodite Anadyomene and Eros. 1st - 2nd centuries AD. (*BMCR* 117.)
111. A gold ring with the bezel depicting Isis and Osiris Canopus. 1st - 2nd centuries AD. Alexandria. (*BMCR* 118.)
112. A diagram of a typical multi-bezel ring.
113. A gold two-bezel ring with undecorated bezels. 1st - 2nd century AD. (Private collection.)
114. A gold two-bezel ring with cursory bezel design. 1st - 2nd century AD. (Private collection.)
115. A gold four-bezel ring with highly stylised deities depicted on the bezels. 1st - 2nd centuries AD. (Private collection.)
116. A gold three-bezel ring with stylised deities depicted on the bezels. 1st - 2nd centuries AD. (Private collection.)
117. Two gold multi-bezel rings. 1st - 2nd centuries AD. Damanhûr. (*BMCR* 167 and 170)
118. A gold two-bezel ring with bezels depicting Isis and Aphrodite. 1st centuries BC/AD. (Allard Pierson Museum, Amsterdam. 7022.)
119. A gold two-bezel ring depicting Isis and Isis/Hathor. 1st centuries BC/AD. (Private collection.)
120. A gold ring with Sarapis bezel. 1st - 2nd century AD. (MMA.)
121. A gold ring with Harpokrates or Dionysos. 1st - 2nd century AD. (MMA.)
122. A marble ring with a head of Sarapis in relief. 1st - 2nd centuries AD. (Alexandria Museum. 3384.)
123. A gold ring with bezel showing Isis and Sarapis. Romano-Egyptian. (*BMCR* 235.)
124. A gold ring with bezel showing Isis and Sarapis. Romano-Egyptian. (Private collection)
125. A gold Herakles knot ring. 3rd - 2nd centuries BC. Alexandria. (*BMCR* 913.)
126. A simple gold Herakles knot ring. 1st - 3rd centuries AD. Delta. (*BMCR* 959.)
127. A gold Herakles knot ring. 2nd - 3rd centuries AD. Tell Atrîb. (*BMCR* 958.)
128. A gold Herakles knot ring. 2nd - 3rd centuries AD. (Louvre Bj 1150.)
129. A gold and emerald swivel ring. 3rd century AD.
130. A gold and emerald (?) swivel ring. 3rd century AD. Alexandria. (*BMCR* 836.)
131. A gold and emerald two-finger ring. 3rd century AD. (University College London. 8705.)
132. A gold and green glass two-finger ring. 3rd century AD. (University College London. 36334.)
133. A gold, garnet and pearl two-finger ring. 3rd century AD. (*BMCR* 842.)
134. A gold and glass triple-finger ring. 3rd century AD. (Benaki Museum, Athens. 1706.)
135. A painted cartonnage depicting a two-finger ring in wear. 3rd century AD. (Louvre. 21360.)
136. A painted cartonnage of a woman possibly showing a three-finger ring in wear. 3rd century AD. (CM CG 33280.)
137. Diagram of a typical polygonal hoop ring.
138. The bezel from a polygonal hoop ring showing a stylised Aphrodite Anadyomene. 2nd - 3rd centuries AD. (Private collection.)
139. The bezel from a polygonal hoop ring showing a Isis with Harpokrates. 2nd - 3rd centuries AD. (Private collection.)
140. A gold ring showing a woman before an altar. Early to mid Hellenistic. Kafr 'Ammâr. (University College, London. 8707.)
141. A gold ring showing a mouse bound to a column. Late 4th - 3rd century BC. Alexandria. (*BMCR* 89.)
142. A gold ring showing a dancing Maenad. Late 4th - 3rd centuries BC. (Private collection.)
143. A gold ring with a monogram. Hellenistic. Said to be from Alexandria. (Private collection.)
144. A gold ring showing a flying Eros. Early 3rd century BC. Alexandria. (After Breccia 1912.)
145. A gold ring showing a Ptolemaic ruler in Greek guise. 2nd century BC. (Louvre.)
146. A gold ring showing a Ptolemaic ruler in Egyptian guise. 2nd century BC. (Louvre.)
147. A gold and carnelian ring with a portrait of Arsinoe II (?). Late 3rd - early 2nd century BC. (*BMCR* 367.)

148. A gold ring set with a green glass. c. 2nd century BC. (Private collection.)
149. A gold ring with confronted heads of Isis and Sarapis. 2nd century BC to 1st century AD. (After Ward *et al* 1981.)
150. A gold ring set with elliptical garnet. 2nd - 1st centuries BC. (Ashmolean Museum, Oxford.)
151. A gold and emerald ring. 2nd - 1st centuries BC. Memphis. (CM CG 52206.)
152. A gold and emerald ring. c. 1st century BC. (BMCR 7221.)
153. Diagram showing a well-known late Roman ring type.
154. A gold ring with green bloodstone intaglio of an eagle. Late 3rd - 4th centuries AD. (Private collection.)
155. A gold, green glass and emerald ring with openwork sides. Late 3rd century AD. Delta. (BMCR 793.)
156. A gold and red jasper ring. Late 3rd century AD. (CM JE 42897.)
157. A gold ring with elaborate incurved bezel. Late 3rd century AD. (BMCR 819.)
158. A silver ring with stone settings and incurved bezel. c. 4th century AD. Qustul. (After Emery 1948.)
159. A gold ring set with a coin of Antoninus Pius. Late 3rd - 4th centuries AD. (After *Ars Antiqua* 1959.)
160. A gold ring set with a coin of Septimius Severus. Late 3rd - 4th century AD. Abuqîr. (After *Ars Antiqua* 1959.)
161. A gold ring with garnet intaglio. 5th - 6th centuries AD. Ballana. (After Emery 1948.)
162. A gold ring with crescent bezel. 1st - 2nd century AD. (BMCR 248.)
163. A gold ring with attached figure of Harpokrates. 2nd centuries BC/AD. (Louvre.)
164. A gold ring with Gnostic haematite intaglio. Romano-Egyptian. (Private collection.)
165. A gold betrothal ring showing clasped hands. Late 3rd - 4th centuries AD. Cairo. (British Museum. MLA 1971,8-2,4.)
166. The painted coffin of Tiye. 21st Dynasty. (MMA.)
167. A detail of the ear on the mummified head of Tiye. 21st dynasty. (MMA)
168. Elaborate multi-lobes earrings. c. 6th century BC. (CM CG) 52473 & 52463.
169. A gold tapered hoop and sphere-drop earring. c. 6th century BC. (After CM CG 52441.)
170. A goddess on the lid of a coffin from the family of Cornelius Pollius. c. 1st - 2nd century AD. (British Museum.)
171. A goddess on the base of a coffin from the family of Cornelius Pollius. c. 1st - 2nd century AD. (British Museum.)
172. The head of a Pharaoh wearing earrings. 25th dynasty. Edfu. (On site, unpublished.)
173. A limestone trial-piece showing a young prince - perhaps the young Ptolemy III - wearing earrings. (Fitzwilliam Museum. EGA 4338. 1943.)
174. A portrait of a child - possibly male - wearing earrings. 2nd century AD. Hawâra. (CM CG 33227.)
175. Typical Hellenistic and Roman earring types with their methods of wear.
176. A gold lion-head earring. Late 4th - 3rd century BC. (Brooklyn Museum. 37.777E.)
177. A pair of gold lion-griffin earrings. Late 4th - 3rd century BC. (Leiden. I 1941/12.2.)
178. A gold ibex-head earring. c. 3rd century BC. (CM CG 52523.)
179. A gold bull-head earring of the decorated type. c. 2nd century BC. (Brooklyn Museum. 37.781E.)
180. A pair of gold bull-head earrings. c. 2nd century BC. (MMA.)
181. A terminal of a gold bull-head earring. c. 2nd century BC. Saqqâra. (Brooklyn. 37.779E.)
182. A pair of gold and stone-set dolphin-head earrings. 1st century BC/AD. (Brooklyn Museum. C. Bastis Collection.)
183. A gold and stone-set goat-head earring. c. 1st century AD. (Private collection.)
184. A gold and garnet dolphin-head earring. 1st century BC/AD. (Staaliche Museum, Berlin. Misc. 8949.)
185. A painted cartonnage of a woman showing a goat or dolphin-head earring in wear. 1st - 2nd century AD. (MMA.)
186. A lion-headed serpent on a magical papyrus from Egypt. (British Museum.)
187. An adult Syrian ibex showing beard.
188. A gold bull-head earring. c. 2nd century BC. Abydos. (CM CG 52528 - 9.)
189. Gold dolphin-head earrings with diminutive heads. 1st - 2nd century AD. (Staatliche Museum, Berlin. Misc. 8949.)
190. A gold earring with lynx head. 1st century BC/AD. Thebes. (Brooklyn Museum. 37.783E.)
191. A terracotta mould for producing a silver or copper alloy animal-head earring. Ptolemaic. (Private collection.)
192. A statuette of a well-to-do woman wearing an animal-head earring. Ptolemaic. (Brussels.)
193. A cartonnage of a woman showing animal-head earrings in wear. 1st century AD. (Manchester. 212.2120.)
194. A pair of lead and glass S-hoop earrings *in situ* on mummified ears. (University College, London. UC 28041.)
195. A pair of onyx and gold S-hoop earrings. 1st century AD. (Benaki Museum. 103/39.)

196. A pair of gold S-hoop earrings with emerald and silver beads. (Benaki Museum. 103/38.)
197. A gold negro-head earring made on the S-hoop principle. 2nd century BC.
198. Gold earrings combining dolphin-head terminals with S-hoop construction. 1st century AD. (Stathatos Collection, Athens, After Amandry 1953.)
199. A gold earring of S-hoop type with triple wires. 1st century AD. Tell Basta. (*BMCF* 2624 - 5.)
200. A diagram of an S-hoop earring with complex binding.
201. A cartonnage of a woman showing S-hoop earrings in wear. 1st century AD. (CM CG 33131.) See also fig. 453.
202. A painted funerary portrait of a woman showing S-hoop earrings in wear. c. 3rd century AD. Er-Rûbiyât. (Ex. Coll. Graf - After Parlasca 1980.)
203. A funerary mask of a woman showing traces of S-hoop earrings. 2nd - 3rd century AD. (MMA)
204. A variant S-hoop type of earring set with pearls. 1st century AD. (Private collection.)
205. Osiris depicted with uraei hanging from his horns. (MMA 25.184.20.)
206. Hathor represented with uraeus hook earrings. Time of Seti I. (Louvre.)
207. A cartonnage mask from er-Rûbiyât showing tapered hoop earrings in wear. 1st century BC/AD. (Edinburgh 1901.547.1)
208. A cartonnage mask of a woman showing tapered hoop earrings in wear. Ptolemaic. (MMA 12.182.48 a-c.)
209. Simple hollow tapered hoop earrings. 1st - 2nd century AD. From Saft el-Hîna. (After Petrie 1906.)
210. A diagram showing the construction of hollow tapered hoop earrings.
211. A pair of gold earrings with tapered hollow hoops and ram-head drops. Ptolemaic. (After Needler and Graham 1953.)
212. A gold ball earring. 1st - 2nd century AD. Giza. (CM CG 52490.)
213. A pair of green glass and gold ball earrings. 1st - 2nd century AD. (Private collection.)
214. A painted funerary portrait showing gold ball earrings. 1st century AD. (East Berlin. 10974.)
215. A painted funerary portrait showing ball earrings. 1st - 2nd century AD. Er-Rûbiyât. (National Gallery, London. 3931.)
216. A painted funerary shroud from Hawâra. Probably 1st century AD. (National Gallery, London. 1266.)
217. A simple gold and pearl bar and drop earring. 1st century AD. (After Schreiber 1894.)
218. Gold and pearl bar and drop earrings. 1st century AD. (Private collection.)
219. Gold rigid bar and drop earrings. 1st- 2nd century AD. (Private collection.)
220. A painted funerary portrait showing earrings in wear. 2nd - 3rd century AD. (University Museum, Stanford, California. 22225.)
221. A painted funerary portrait showing jewellery in wear. (Royal Museum of Scotland. 1902.70.)
222. A gold and pearl earring. 2nd - 3rd century AD. (Brooklyn Museum. 37.756E.)
223. A painted portrait showing earrings. 3rd Century AD. (KHM, Vienna. X301.)
224. A limestone funerary sculpture of a woman. 3rd century AD. Oxyrhynchus. (Rijksmuseum van Oudheden, Leiden. F1972/8.1.)
225. A funerary mask of a woman. 2nd century AD. Balansûra. (CMCG 33209.)
226. A pearl and gold earring. 1st - 2nd century AD.
227. A gold and emerald earring. 2nd century AD. (After Christies 1979.)
228. A gold and glass bead earring. 2nd - 3rd century AD. (Brooklyn Museum. 37.759E.)
229. A pair of gold and green glass earrings. 2nd - 3rd century AD. (After Christies 1979.)
230. Earrings and earring pendants with large size suspension loops. 3rd century AD.
231. A pair of gold earrings with large suspension loops. 3rd century AD. Ghîta. (MMA, After Petrie 1906.)
232. A painted funerary portrait with elaborate earrings and other jewellery. 3rd century AD. (CM CG 33281)
233. A painted funerary portrait showing elaborate earrings and a coin-set (?) pendant. Late 3rd - early 4th century AD. (Walters Arts Gallery. 32.4.)
234. Gold earring with granulated clusters. 3rd century AD.
235. A plaster mask showing torc and earrings with granulated clusters. Antinoopolis. 3rd century AD. (Berlin Äg. 13162.)
236. Types of gold earrings with inverted pyramids of grains. 3rd century AD.
237. A pair of gold earrings with inverted pyramids of grains. 3rd century AD. (Private collection.)
238. A gold earring with inverted pyramid of grains. 3rd century AD. (Private collection.)
239. A detail of the last showing the construction of the pyramids from triangular sheets of granulation.
240. A gold earring with inverted granulated pyramid and pearl binding. 3rd century AD. (CMCG 52504.)
241. A painted mask showing pearl and gold earrings in wear. (CM CG 49099.)
242. A pair of gold earrings with inverted granulated cones. c. 3rd century AD. (Private collection)
243. A sheet gold earring with grain cluster and with filling. c. 3rd century AD. (After Petrie 1927.)
244. A painted portrait showing earrings with inverted pyramids of grains and a torc or necklet. c. 3rd century AD. (Kansas City. 37-40.)

245. A gold earring with long gold and pearl drop. 5th - 6th century AD. (After Christies 1979.)
246. A gold earring with long chain and pearl drop. 5th - 6th century AD. (After Christies 1979.)
247. A gold earring with long pendant with 'fog-lamp' type of setting. c. 6th century AD. (Walters Art Gallery, Baltimore. 57.592.)
248. A Coptic textile showing a dancing girl wearing long earrings with pearls. 5th - 6th century AD. (Louvre, after de Bourget 1984.)
249. A gold hoop earring with three chain drops. c. 6th century AD. (Walters Art Gallery, Baltimore. 57.575.)
250. A pair of gold earrings with triple chain drops set with pearls. 6th century AD. (Private collection.)
251. A pair of gold hoop earrings with triple chain drops terminating in small crosses and an amethyst. 6th century AD. (Walters Art Gallery, Baltimore. 57.1729.)
252. A pair of gold earrings with triple chain drops, openwork beads and pearls. Fayûm. 6th century AD. (*BMCJ* 2581 - 2.)
253. A Coptic tapestry showing Hestia Polyolbos with chain-drop earrings. c. 6th century AD. (Dumbarton Oaks. 29.1.)
254. A gold hoop earring with triangular open-work filigree motif and pearls. c. 6th century AD. (Benaki Museum, Athens. 108/5.)
255. A gold hoop earring with triangular open-work filigree motif and pearls. c. 6th century AD. (Cleveland Museum of Art. 47.178.)
256. A pair of gold tapered hoop earrings with a double *aegis* motif. Ptolemaic. (After Sotheby 1964.)
257. A gold and emerald hawk earring. Ptolemaic. (Private collection, after Ogden 1982b.)
258. A gold dolphin pendant. c. 3rd century AD. Tell Basta. (After Hilton Price 1897.)
259. A painted panel showing Isis with dolphin-like earrings. 3rd century AD. (J. Paul Getty Museum. 74.AP.21.)
260. Two gold earrings with granulated and filigree fringes. c. 5th - 6th century AD.
261. A gold tapered hoop earring with two rigid pendants for beads. c. 5th - 6th century AD. (Brooklyn Museum. 37.764E.)
262. A Hellenistic gold ear stud with elaborate filigree decoration. Late 4th - 3rd century BC. El-Amarna. (Royal Museum of Scotland. 1883.49.11.)
263. A Hellenistic gold disk earring (missing pendants). El-Zaqâziq. 3rd century BC. (After Schreiber 1894.)
264. A gold Eros-hoop earring. c. 2nd - 1st century BC. Elephantine. (Staatliche Museum, Berlin. Misc. 10832.)
265. A pair of gold and garnet disk and amphora earrings. c. 2nd - 1st century BC. Said to be from Egypt. (*BMCJ* 2331)
266. Painted wood imitation earrings on a cartonnage. Probably Meir. 1st century AD. (MMA. 19.2.6.)
267. A gold disk and sphere-drop earring. Probably late Hellenistic.
268. A pair of gold disk and sphere-drop earrings. Probably late Hellenistic. (Benaki Museum, Athens. 103/22.)
269. A pair of gold hoop earrings with granulated triangular fringe. 1st - 2nd century AD. (CM CG 52591 - 2.)
270. A gold conical pendant probably from an earring. Romano-Egyptian. (Brooklyn. 37.769E.)
271. A gold lunate earring with repoussée peacock. 6th century AD. (Benaki Museum. 106/20.)
272. A gold openwork filigree earring with pearls. 6th - 7th century AD. (Staatliche Museum, Berlin. 30219. 1063.)
273. An openwork copper alloy and glass bead earring. c. 6th - 7th century AD. (After Sotheby 1989b.)
274. A detail of a painted funerary portrait showing and emerald and chain-link necklet and a loop-in-loop chain necklet with a crescent pendant.
275. A funerary portrait of a woman showing six bead (pearl?) necklets. 2nd century AD. (Magonza, Institute of Art History. 991.)
276. A painted funerary shroud of a man showing a naos pendant of traditional Egyptian design. 1st century AD. (Louvre. E 20359.)
277. A gold loop-in-loop chain necklet with emerald beads. c. 2nd century AD. (MMA M3351.)
278. Varieties of chain links.
279. A detail of open loop-in-loop chain with filigree crescent pendant. 3rd century AD. (Private collection.)
280. A gold loop-in-loop chain necklet with dome clasp. 1st century AD. Naukratis. *BMCJ* 2734.)
281. A detail of tight multiple loop-in-loop chain necklet with openwork pendant. c. 6th century AD
282. A painted portrait of a woman showing elaborate jewellery including a chain ornament crossing the chest. 2nd century AD. (After Parlasca 1977.)
283. A terracotta statuette of a woman wearing a chain ornament. 2nd century AD. Fayûm. (British Museum. EA 1988.11-12.34.)

284. A gold ornament of openwork disks. 6th - early 7th century AD. (British Museum, MLA 1916.7-4.1)
285. A detail of the clasp of a necklet of Queen Ahhotpe. c. 1550 BC. (CM CG 52670.)
286. A loop-in-loop chain necklet with griffin-head clasp. c. 3rd century BC. From the Tûkh el-Qarâmûs treasure. (CM CG 53670.) With detail of clasp.
287. Ditto. A detail of the fastening of the terminals.
288. A Herakles knot centrepiece. Hellenistic. Said to be from Alexandria. (Cleveland Museum of Art. 47.505.)
289. A typical wheel-like clasp of beaded wire. Roman.
290. A gold necklet with openwork filigree clasp and amphora pendant. c. 6th century AD. (Dumbarton Oaks. 47.26.)
291. A convex openwork clasp. 2nd - 3rd century AD. (MMA)
292. A detail of openwork filigree and leaf clasp set with a sardonyx. Late 2nd - 3rd century AD. (Al-lard Pierson Museum, Amsterdam. 7001.)
293. A detail of a Medusa-head clasp on a flattened loop-in-loop chain. 3rd century AD. (Cairo Museum.)
294. A silver multiple loop-in-loop chain with openwork filigree clasp and crescent disk pendant. 3rd century AD. (After Petrie 1927.)
295. Pierced openwork necklet terminals of trapezoidal form with emerald beads. c. 300 AD. (Cairo Museum.)
296. A pierced openwork pendant of trapezoidal form. Fayûm. c. 4th century AD. (British Museum, from the Rev. G. J. Chester, 1875.)
297. A gold collar of trapezoidal pierced openwork sections with pearls and gemstones. Asyût treasure. c. 600 AD. (Staatliche Museum, Berlin. 30219.505.)
298. A pierced openwork necklet terminal. c. 6th century AD. (Cairo Museum.)
299. A necklet of openwork trapezoidal motifs threaded with glass beads and a necklet with coin pendants. (After Rosenberg 1922.) With details of trapezoidal motifs and a terminal.
300. A pair of gold pendants or terminals in the form of boats. Late Period or Ptolemaic. (Louvre. E.10687.)
301. A fragment of a broad collar. Probably Ptolemaic. (CM JE 22076.)
302. A miniature gold broad collar with inlays. Tûkh el-Qarâmûs treasure. Ptolemaic. (CM CG 53669.7.)
303. A miniature gold broad collar with inlays. Tûkh el-Qarâmûs treasure. Ptolemaic. (MMA Dick Fund 1949.)
304. Two miniature gold broad collars with inlays (the conjoined form is probably incorrect.) Possibly from the Tûkh el-Qarâmûs treasure. Ptolemaic. (Private collection.)
305. A diagram of the two main ways of assembling loop-in-loop chain 'straps'.
306. A gold loop-in-loop chain strap with elaborate filigree terminal in traditional Egyptian style. Probably Ptolemaic. (MMA 30.8.421.)
307. A gold strap necklet with fringe of small amphora pendants and box clasps with uraei. 1st century AD. (After Ariadne 1983)
308. A detail of strap necklet similar to the last but with matching crescent pendant. 1st century AD. (*BMCJ* 2716.)
309. Detail from a marble statue of Isis showing her holding a situla. c. 2nd century AD. (Alexandria Museum. 25793.)
310. A gilded cartonnage from Hawâra showing various jewellery including a strap necklet with a fringe of small pendants. 1st century AD. (CM CJ 33126.)
311. A painted funerary portrait showing a strap-like head ornament. 1st century AD. Er-Rûbîyât. (Staatliche Museum, Berlin. 31161/1.)
312. (Top) A gold strap necklet with biconical bead pendants. 1st century AD. (National Museum, Athens. 1558.)
313. A gold open-link strap necklet with added fertility pendant. 1st century AD. (British Museum, Egyptian dept.)
314. A painted cartonnage of a woman showing an elaborate lattice-like necklet. 2nd - 3rd century AD. (CM CG 33153.)
315. A gold lattice necklet with various sheet gold motifs. c. 6th century AD. Probably Fayâm. (Dumbarton Oaks. 38.67.)
316. A gold lattice-work necklet. c. 4th century AD. (Private collection.)
317. A detail of the statue of Ptahhotpe wearing a Persian style animal-headed torc. c. 5th century BC. (Brooklyn Museum, After Brooklyn 1960.)
318. A detail of the relief on the front of first pylon at Edfu showing slain foreigners wearing an animal-headed torc. Time of Ptolemy XII.
319. A necklet of linked double-bird motifs. 3rd century AD. (Private collection.) With detail of dolphin clasp.
320. A necklet of double-bird motifs with dolphin and shell clasp. 3rd century AD. (Dumbarton Oaks. 28.7.)

321. A painted funerary portrait perhaps showing a gold linked-motif necklet. 3rd century AD. (University College, London. 14692.)
322. A part of a gold necklet composed of three dolphins. 3rd century AD. Tell Basta. (After Schreiber 1894.)
323. A part of a necklet composed of linked dolphin motifs with garnets, emeralds and pearls. 3rd century AD. (CM Temp. 24.11.21.1.)
324. A detail of the construction of the last.
325. A necklet of linked motifs with dolphin clasps. 3rd century AD. (Private collection.) With detail of a terminal.
326. Two pieced openwork gold necklet components set with pearls. 3rd - 4th century AD. Fayûm. (British Museum. Gift of the Rev. G. J. Chester 1875.)
327. A section of a necklet set with emeralds and carnelians. 3rd century AD. (CM CG 52151.)
328. A section of a necklet set with glass. 3rd century AD. (CM CG 52153.)
329. A Medusa-head necklet of open loop-in-loop chains and a small bust of Isis on the back. 3rd century AD. (Benaki Museum 104/57.)
- 330-4. Examples of medallion types from Medusa-head necklets. 3rd century AD. (330 Private collection; 331. Private collection; 332. Walters Art Gallery. 57.520; 333. Benaki Museum. 104/57; 334 *BMCJ* 2730.
335. Details of the face of the Medusa head in fig. 52.
336. The same as the last, showing interior and reinforcement to the nose.
337. A painted funerary portrait of a woman showing a Medusa-head necklet. 3rd century AD. (Vienna. X301.)
338. A painted funerary shroud showing a woman wearing a Medusa-head necklet, elaborate earrings and overlap-twist bracelets. 3rd century AD. (Private collection.)
339. A detail of the construction of a simple 'Chinese lantern' type of necklet.
340. A detail of a diadem with Chinese lantern type construction. Probably Ptolemaic. (MMA.)
341. A funerary portrait of a man showing a lotus or star diadem. 2nd century AD. (National Gallery, London. 2912.)
342. A funerary diadem woven from papyrus. 4th century AD. (Museum of Fine Arts, Boston. 50.388.)
343. A fragment of a gold Chinese lantern necklet with pendants. 3rd - 4th century AD. (Private collection. After Christies 1979.)
344. An elaborate gold Chinese lantern necklet with framed coin pendant of Gordian III. (Private collection.) With detail.
345. A gold pendant set with a coin of Quietus. Late 3rd century AD. (CM JE 47515.)
346. A gold pendant set with a coin of Hadrian. Late 3rd century AD. (Benaki Museum. 104/59.)
347. A detail of a necklet with two pendants set with coins of Alexander Severus. (MMA. After Denison 1918.)
348. A gold necklet from Abuqîr. Late 3rd - 4th century AD. (Atkins Museum, Kansas City.)
349. A painted funerary portrait showing a woman with a necklet with what is probably intended as a coin-set pendant. Late 3rd - 4th century AD. (Detroit. 25.2.)
350. A limestone bust showing a necklet with what is probably a coin-set pendant. 3rd - 4th century AD. (Alexandria Museum R746.)
351. A gold pierced openwork pendant set with a coin of Honorius. Late 4th - 5th century AD. (Staatliche Museum, Berlin. 30505.)
352. A gold necklet with imitation coin pendant. Late 3rd - 4th century AD. (MMA)
353. Two gold pendants with portrait medallions. Late 3rd century AD. (Louvre. Bj. 750 and 751.)
354. A pierced openwork pendant with central profile head of Alexander the Great. Possibly Abuqîr. 4th - 5th century AD. (Walters Art Gallery. 57.526.) With missing fragment (CM JE 45285.)
355. A gold chain with pendant with frontal male bust, possibly an emperor, and a figure of Osiris. Mid to late 3rd century AD. (Kansas City. 57-78.)
356. A gold chain necklet with seven coin pendants. c. 300 AD. (Walters Art Gallery. 57.1600.)
357. A gold chain necklet with five coin pendants. c. 300 AD. Possibly Memphis. (MMA. 36.9.)
358. A gold chain necklet with four coin pendants. c. 300 AD. (KHM. Vienna. 273.)
359. Detail of fig. 299, the same as the last, when still with a dealer in Egypt. (After Rosenberg 1922.)
360. Gold chains and 'slider' beads. c. 300 AD. Hadra, Alexandria. (Alexandria Museum. After Breccia 1932.)
361. Gold chains with 'slider' beads. c. 300 AD. (Private collection, Germany.)
362. A single gold 'slider' bead. c. 300 AD. (Private collection.)
363. A limestone relief showing Aphrodite with a large pendant, possibly coin-set. c. 4th century AD. (Louvre.)
364. A gold torc with inset coins and a medallion pendant. c. 600 AD. Asyût treasure. (Staatliche Museum, Berlin. 30219, 506. 506a.)
365. A gold torc with inset coins. c. 600 AD. Asyût treasure. (MMA.)
366. A gold torc with inset coins. c. 600 AD. (Private collection.)

367. Gold linked medallions from a belt. c. 600 AD. Asyût treasure. (Smithsonian Institution, Washington.)
368. Six framed solidi from a belt, possibly part of the last. c. 600 AD. (British Museum.)
369. A part of a coin-set belt. 4th century AD. (Omar Pasha Sultan Collection.)
370. A gold centrepiece from a belt. Possibly part of the last. 4th century AD. (Walters Art Gallery. 57.527.)
371. A sheet gold pendant showing a draped goddess, probably Isis. c. 1st century AD. (Private collection.)
372. A sheet gold pendant showing a draped goddess, probably Isis (pin modern). c. 1st century AD. (Private collection.)
373. A bronze former for producing a disk with the head of Aphrodite with a a separate carved stone face. c. 1st century BC. Galjub. (After Ippel 1922.)
374. A gold disk with a bust of Aphrodite and Eros. c. 1st century AD. (*BMCI* 2883.)
375. A sheet gold pendant in the form of Aphrodite Anadyomene. 1st century AD. Unprovenanced. (Römisch-Germanisches Zentralmuseum, Mainz.)
376. A sheet gold pendant showing Baubo as a naked woman. c. 1st century AD. (Private collection.)
377. A sheet gold figure of Harpokrates set with an emerald. c. 1st century AD. (Benaki Museum, Athens. 104/70.)
378. A sheet gold figure of Harpokrates in military guise. c. 2nd century AD. (Benaki Museum, Athens. 104/72.)
379. Two oval gold plaques showing a naked youth. c. 1st - 2nd century AD. (Private collection.)
380. A bronze former for producing a sheet gold motif like the previous. c. 1st century BC. Galjub. (After Ippel 1922.)
381. A gold naos-like pendant showing a seated Harpokrates. Ptolemaic or Roman. (Private collection.)
382. A gold necklet with heart-shaped pendant and two applied figures of Harpokrates and Sarapis. c. 2nd century AD. (Staatliche Museum, Berlin. Misc. 11863.6)
383. A detail of a gilded cartonnage of a woman showing a triad pendant. 1st century AD. Hawâra. (CM CG 33128.)
384. A gold triad pendant of Isis, Nephthys and Harpokrates. 1st century AD. (Private collection.)
385. A gold pendant or terminal in the form of a triad of Harpokrates, Isis and Nephthys. c. 1st century AD. Manchester. after Robinson 1937.)
386. A gold pendant in the form of three draped women, possibly Muses. c. 1st century AD. (Private collection.)
387. A pendant in the form of three draped women within a circle. c. 2nd century AD. (MMA.)
388. A gold pendant in the form of four draped male deities. c. 1st - 2nd century AD. (Benaki Museum, Athens. 104/51.)
389. A gold disk with a representation of Anubis. c. 3rd century AD. (Ex. Coll. Gans. After Jaeger 1928.)
390. A gold chain necklet with a pendant in the form of the goddess Maat. Ptolemaic or earlier. (British Museum. EA 48998.)
391. A painted cartonnage of a man showing a winged-scarab pendant. c. 3rd century AD. Deir el-Bahri. (CM CG 33276.)
392. A gold *ba*-bird pendant with filigree enamel decoration on the wings. Probably Ptolemaic. (Private collection.)
393. Types of amulet case pendants. a) Middle Kingdom Egyptian. b) Phoenician. c) and d) Roman and Byzantine.
394. A funerary portrait of a young man wearing a necklet with an amulet case. 3rd - 4th century AD. Er-Rûbiyât. (Private collection. After Parlasca 1970.)
395. A gold crescent pendant with filigree rosettes and granulation. c. 1st century AD. (Private collection.)
396. A gold crescent pendant with granulated rosettes. c. 1st century AD. (Private collection.)
397. A gold crescent pendant with small applied uraeus. c. 1st century AD. (Private collection.)
398. A gold combined disk and crescent pendant with head of Helios. c. 2nd - 3rd century AD. (After Drouot 1957.)
399. A painted funerary portrait of a child with a necklet with pendants possibly of the crescent-disk type. 1st century AD. Hawâra. (CM CG 33240.)
400. Two elaborate gold crescent disks with filigree, granulation and stone-settings. 1st-2nd century AD. (Ashmolean Museum.)
401. A gold cross with repoussé depictions of Christ and busts of the four Evangelists. 6th - 7th century AD. (Dumbarton Oaks. 37.24.)
402. A gold cross. 6th - 7th century AD. Asyût treasure. (Staatliche Museum. Berlin. 30219.)
403. A simple gold cross. c. 6th century AD. (Benaki Museum, Athens. 106/24.)
404. A gold cross with conical arms and applied quatrefoil rosette. 6th - 7th century AD. (Benaki Museum, Athens. 106/24.)
405. A gold cross with tapered square-section arms. c. 6th century AD. Nubia. (CM JE 70478.)

406. An elaborate gold cross set with a pearl. 6th - 7th century AD. Possibly Hadra. (Dumbarton Oaks. 38.69.)
407. An openwork gold pendant with cross motif. 6th - 7th century AD. Asyût treasure. (British Museum.)
408. A painted plaster figure of a woman wearing a cross. 6th - 7th century AD. (MMA 12.185.4.)
409. A gold and lapis lazuli shell-pendant with a figure of Aphrodite Anadyomene, on a gold and lapis chain. Late 6th - 7th century AD. Probably Egypt. (Dumbarton Oaks. 28.6.)
410. A gold and garnet pear-shaped pendant. c. 1st century BC. (After Laffineur 1980.)
411. Three circular gold pendants with granulated decoration and, in one case, a Bes mask. Ptolemaic. Tûkh el-Qarâmûs treasure. (CM CG 52594 - 6.)
412. A gold and emerald bead necklet with gold club pendants. 2nd - 3rd century AD. (After Drouot 1957.)
413. A bronze former in the shape of a club - possibly for a bracelet component. c. 1st century AD. Galjub. (After Ippel 1922.)
414. A bronze former for making a hand pendant. c. 1st century BC. Galjub. (After Ippel 1922.)
415. A gold openwork pendant with attached pearls. c. 6th century AD. (After Christies 1979.)
416. A plaster funerary portrait of a man. 3rd - 4th century AD. (Trier. 19137.)
417. A gold belt. 20th century. (CM JE 89612.)
418. A gold necklet, a belt, and one of a pair of gold bracelets. 20th century. (MMA.)
419. A gold necklet, a gold belt, and pair of bracelets. 20th century. (Private collection.)
420. A gold necklet with a coin pendant. Probably 20th century. (After Charpentier 1956.)
421. Two gold necklets with tassle pendants. Probably 20th century. (After Charpentier 1956.)
422. Gold necklet set with stone-set pendant. Probably 20th century. (National Gallery of Victoria.)
423. A fragment of cartonnage showing twisted anklets in wear. 1st century AD. (Private collection.)
424. A detail of cartonnage showing twisted anklets. 1st century AD. Hawâra. (After Petrie 1911.)
425. A detail of cartonnage showing anklets. 3rd - 4th century AD. (CM CG 33281.)
426. One of a pair of gold anklets with applied shell motifs. c. 3rd century AD. Supposedly found with the Asyût treasure. (Smithsonian Institution, Washington.)
427. A pair of simple overlap twist bracelets. c. 1st - 2nd century AD. Unknown provenance. (Staatliche Museum, Berlin. 30219. 502.)
428. A pair of twisted overlap twist bracelets. c. 2nd century AD. (Benaki Museum, 104/28.)
429. A gold overlap twist armlet. c. 2nd century AD. (Ex. coll. Kennard.)
430. A detail of the limestone funerary sculpture in fig. 350 showing the overlap twist bracelets. c. 3rd century AD. (Alexandria Museum R746.)
431. A diagram showing the construction of some hollow overlap twist bracelets.
432. An overlap twist bracelet with spiral plates. c. 2nd century AD. (CM CG. 52125.)
433. A diagram showing the construction of some overlap twist bracelets with applied spiral plates.
434. A gold snake armlet with one large and one small head. 1st century AD. (Benaki Museum. 105/7.)
435. A diagram of the main types of coiled snake armlets and bracelets.
436. A cartonnage of a woman showing spiral snake armbands in wear. 1st century AD. Hawâra. (Manchester 20638.)
437. A detail of a cruder snake-head bracelet. c. 2nd - 3rd century AD. (Allard Pierson Museum, Amsterdam. 7004.)
438. A painted funerary portrait of a woman showing various jewellery including a Medusa necklet, emerald and gold link necklet, snake ring and snake bracelet. 3rd century AD. (Moscow. I La 5785.)
439. A gold hinged snake bracelet. c. 3rd century AD. (Benaki Museum, Athens. 105/4.)
440. A pair of silver armlets and ring with melon-like terminals. 1st century AD. (After Christies 1979.)
441. A snake bracelet made from gold foil over a bronze (?) core. 2nd - 3rd century AD. (Benaki Museum Athens. 104/18.)
442. A gold snake bracelet with twisted hoop and hook and eye fastener. 3rd century AD. (CM CG 52103.)
443. A gold bracelet of sigmoidal type. Ptolemaic period. Tûkh el-Qarâmûs. (CM CG 52094.)
444. A gold bracelet of sigmoidal type. c. 2nd - 3rd century AD. (MMA.)
445. A painted funerary portrait showing various jewellery including a snake bracelet of sigmoidal type and a snake ring. c. 3rd century AD. (British Museum. E. 63395.)
446. A stone casting mould for producing silver or copper alloy snake bracelets. 1st - 2nd century AD. (Brussels.)
447. A marble statue of Aphrodite showing a snake armlet and detail of the same. 1st century BC/AD. Sidi Bishr. (Alexandria Museum. 29456.)
448. A painted panel showing Harpokrates wearing a necklet and a snake armlet. 2nd century AD. (CM CG 31568.)
449. A gold serpentine bracelet, one of a pair. 1st century BC/AD. The Delta. (CM CG 52123 - 4.)
450. A bronze former for producing snake heads for serpentine bracelets. 1st century BC/AD. Galjub. (After Ippel 1922.)

451. A pair of silver serpentine bracelets. 1st century AD. Tell el-Balamûn. (MMA.)
452. A gold bracelet of serpentine type. c. 2nd - 3rd century AD. (Private collection.)
453. A gilded cartonnage of a woman showing various jewellery including serpentine snake bracelets. 1st century AD. Hawâra. (CM CG. 33126.)
454. A detail of painted cartonnage showing serpentine bracelets ornamented with rosettes. 1st century AD. (CM CG 33131.)
455. A detail of a limestone funerary statue of a woman wearing serpentine snake bracelets. 1st century AD. (Alexandria museum. 21990.)
456. A painted wooden sarcophagus base showing the deceased wearing stylised serpentine snake bracelets. 1st century AD. Thebes. (British Museum. E. 6705.)
457. Two silver bracelets with coils and uraei terminals. 1st century BC/AD. Tell el-Balamûn. (MMA.)
458. A stone casting mould for silver or bronze bracelets with uraei terminals. (Berlin. After Möller 1924.)
459. Two complex silver knotted snake bracelets or armlets. 1st century BC/AD. Tell el-Balamûn. (MMA. 26.7.1458; 26.7.1463)
460. A silver bracelet with deity bust terminals. 1st century AD. (After Christies 1987.)
461. A gold bracelet with deity bust terminals. 1st century AD. (Private collection.)
462. A gold bracelet with double terminals. c. 1st - 2nd century AD. (CM CG 52109.)
463. An elaborate gold bracelet with knotted serpents and deities. 1st - 2nd century AD. (MMA.)
464. An elaborate gold bracelet with knotted serpent deities and a kantharos. 1st - 2nd century AD. (Benaki Museum, Athens.)
465. A detail of the wrist of a statue showing a Persian type bracelet. c. 500 BC. (Vatican Museum. 196.)
466. A gold bracelet with griffin-head terminals. One of a pair. c. 3rd century BC. Tûkh el-Qarâmûs. (CM CG 52097.) With detail.
467. A gold bracelet with terminals in the form of a winged sphinx. One of a pair. c. 3rd - 2nd century BC. Tûkh el-Qarâmûs. (CM CG 52095.) Plus detail.
468. A gold bracelet with lion-head terminals. 2nd - 3rd century AD. (Leiden Museum.)
469. A gold bracelet with lion-head terminals. 2nd - 3rd century AD. The pair to the previous. (Walters Art Gallery. 57.579.)
470. A pair of gold goose-head bracelets or anklets. 1st - 3rd century AD. (MMA.)
471. A pair of gold goose-head bracelets or anklets. 1st - 3rd century AD. (After Zahn 1929.)
472. A detail of the closure of a hinge fastener bracelet.
473. A gold hinge fastener bracelet. c. 3rd century AD. (Benaki Museum, Athens. 104/29.)
474. A pair of gold snake-head bracelets with hinge fasteners. 3rd century AD. (Private collection, After Christies 1987.)
475. A pair of hinge bezel bracelets. 3rd century AD. (Staatliche Museum, Berlin. 30219.500.)
476. A diagram of the construction of a typical hinge bezel bracelet.
477. A hinge bezel bracelet with shell motif on the hinges. 3rd century AD. (Benaki Museum, Athens. 104/12.)
478. An elaborate hinge bezel bracelet with openwork scroll surround. One of a pair. 3rd - 4th century AD. (Benaki Museum, Athens. 104/6.)
479. A hinge bezel bracelet with knot-shaped bezel. 3rd - 4th century AD. (Benaki Museum, Athens. 104/8.)
480. A silver bracelet of hinge bezel type. 4th century AD. Ballana. (After Emery 1948.)
481. A hinge bezel bracelet on the wrist of a limestone funerary statue. 3rd century AD. Oxyrhynchus. (Leiden Museum)
482. A gold bracelet with shrine bezel. 4th century AD. (Bibliothèque Nationale. After Coche de la Ferté 1974.)
483. A gold bracelet with shrine bezel. c. 3rd century AD. (Private collection.)
484. A pair of gold bracelets with shrine bezels. c. 2nd century AD. (Field Museum of Natural History, Chicago. 24998. 1 and 2.)
485. A pair of gold bracelet hoops, bezels missing. c. 2nd century AD. (University College, London. After Petrie 1927.)
486. A bracelet with stone-set square bezel. 4th century AD. From the Asyût treasure. (Staatliche Museum, Berlin. 30994.)
487. A pair of gold bracelets with circular pierced work bezels. 4th century AD. From the Asyût treasure. (MMA 17.190.1668/9.)
488. A gold bracelet with bezel depicting the Mother of God. 6th - 7th century AD. (British Museum. BMAF 351.)
489. A gold bracelet with pierced work bezel. One of a pair. 4th - 5th century AD. (Benaki Museum, Athens. 106/2.)
490. A pair of gold bracelets with stone-set bezels. c. 6th century AD. From the Asyût treasure. (MMA.)
491. A gold bracelet with pierced work decoration. c. 4th century AD. (Private collection in Cairo.)
492. One of a pair of gold centrepieces from bracelets. c. 6th century AD. (CM JE 27460.)

493. A detail of the rim of one of the bracelet hoops in fig 487, showing crimped tube and granule decoration, plus a pierced-work cross.
494. A gold ring of similar technique to the last. c. 300 AD. Hadra treasure. (After Breccia 1932.)
495. A gold ring of similar technique to the last two. c. 300 AD. (Private collection.)
496. An elaborate stone-set bracelet with vine design and rosette bezel. One of a pair. c. 6th century AD. Asyût treasure. (Staatliche Museum, Berlin. 30219.508.)
497. An elaborate gold bracelet with leopards flanking a raised bezel. 6th - 7th century AD. Said to be from Hadra. (Dumbarton Oaks. 38.66.)
498. A gold bracelet set with five coins. One of a pair. Early 7th century AD. (Dumbarton Oaks 38.64 - 65.)
499. A pair of gold bracelets set with medallions imitating coins. Early 7th century AD. From the Asyût treasure. (Staatliche Museum, Berlin. 30219.507.)
500. A fragment of a gold hemisphere bracelet. 1st century AD. (CM CG 52561.)
501. The parts of two gold hemisphere bracelets. 1st century AD. (CM JE (?) 46349.1.)
502. A gold hemisphere bracelet. 1st century AD. Probably from Egypt. (Benaki Museum, Athens. 104/56.) With detail.
503. A gold Herakles knot bracelet. c. 3rd century AD. (MMA 18.2.18.)
504. A gold tapered hoop bracelet. Probably 1st century BC/AD. Tûkh el-Qarâmûs. (Ashmolean Museum, Oxford. 1926.98.)
505. A gold embossed bracelet. 4th century AD. El-Minya. (CM JE 45286.)
506. A gold embossed bracelet. 4th century AD. Hadra. (After Breccia 1932.)
507. A part of an embossed gold bracelet with 'imitation' coins. Late 3rd - 4th century AD. Staatliche Museum, Berlin. 30219.499.)
508. A pair of gold bracelets with serpentine hoops and busts of Isis and Sarapis. c. 1st - 2nd century AD. (Private collection.)
509. A similar but cruder bracelet to the last. c. 1st - 2nd century AD. (After Sotheby 1965.)
510. A rectangular embossed gold plaque, probably a bracelet or armlet. 1st - 2nd century AD. (Private collection.)
511. A fine pair of gold bracelets each in the form of triple hoops. c. 3rd century AD. (Private collection.)



Fig. 1

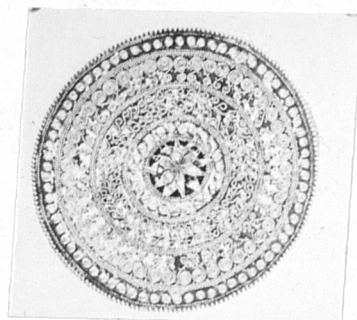


Fig. 2



Fig. 3

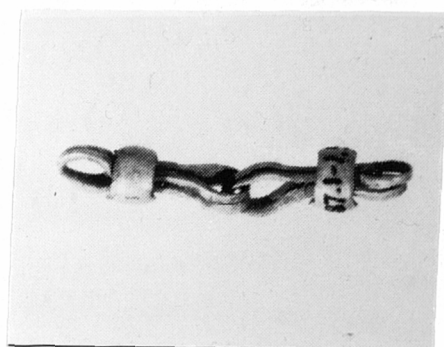


Fig. 4

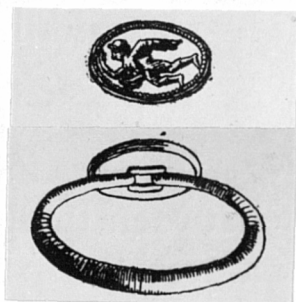


Fig. 5

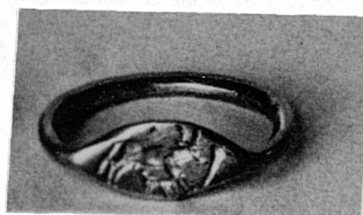


Fig. 6



Fig. 7

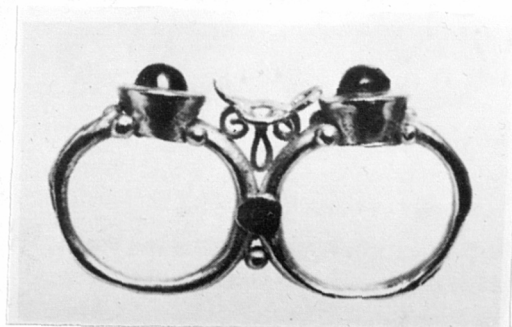


Fig. 8



Fig. 9



Fig. 10

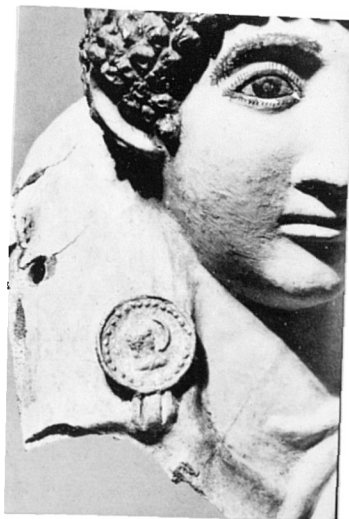


Fig. 11



Fig. 12



Fig. 13



Fig. 14



Fig. 15



Fig. 16

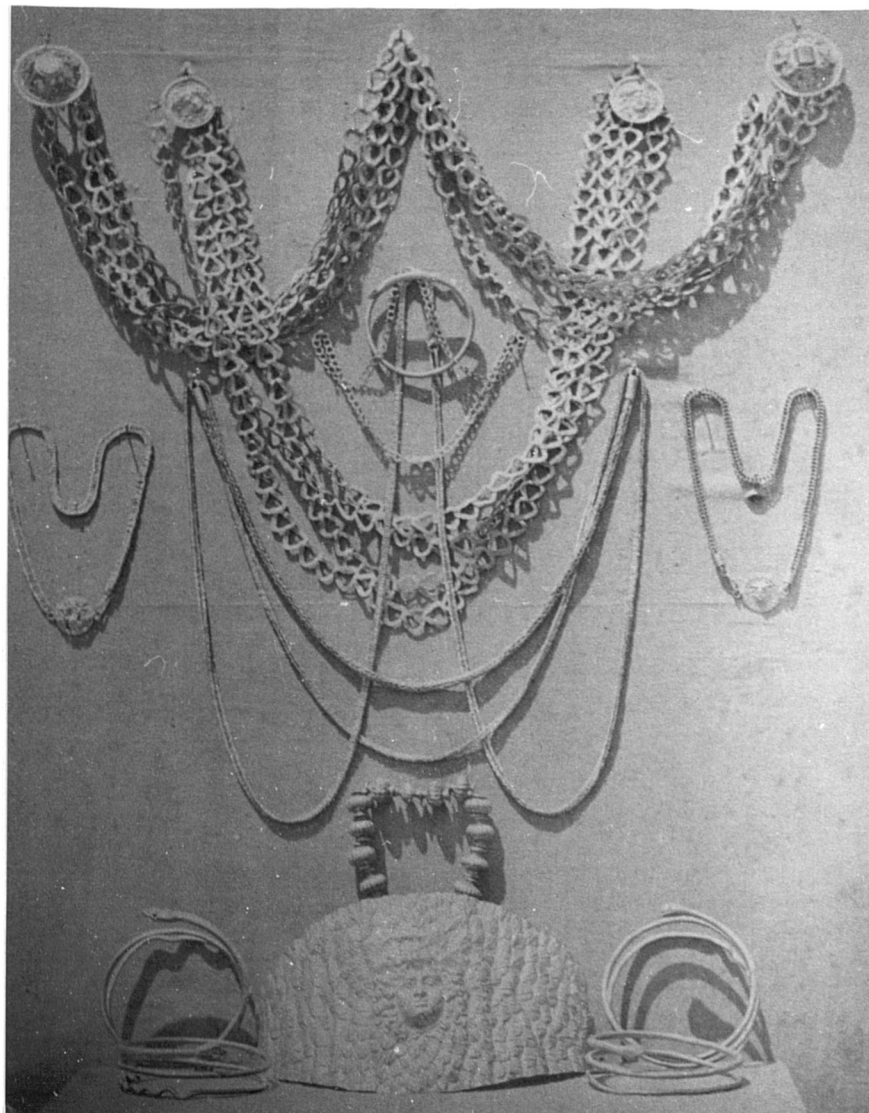


Fig. 17



Fig. 24



Fig. 25



Fig. 26

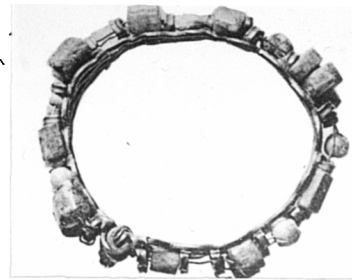
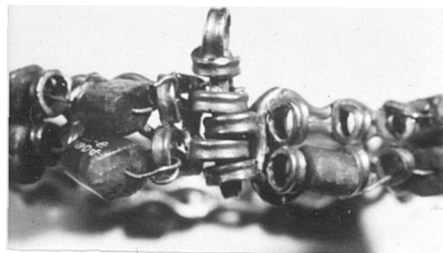


Fig. 27



Detail of clasp in fig. 27

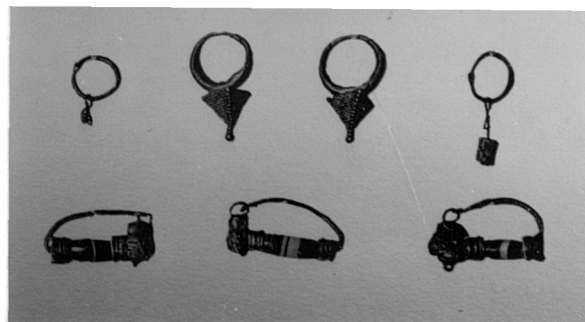


Fig. 28



Fig. 29

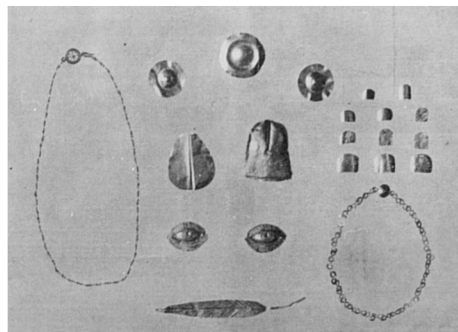


Fig. 30



Fig. 31



Fig. 32

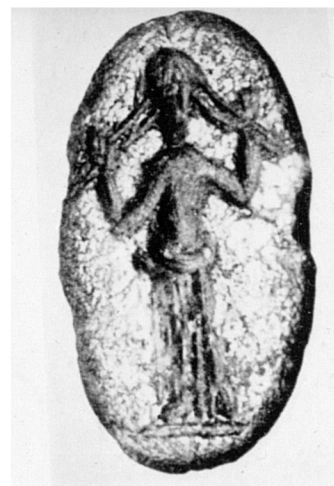


Fig. 33



Reverse of fig. 33



Fig. 34

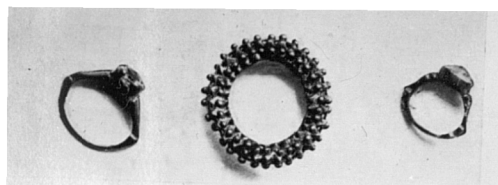


Fig. 35a



Fig. 35b

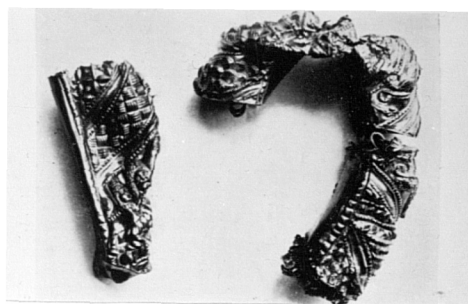


Fig. 35c



Fig. 35d

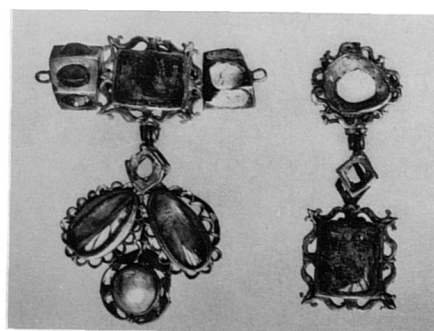


Fig. 36



Fig. 37a



Fig. 37b

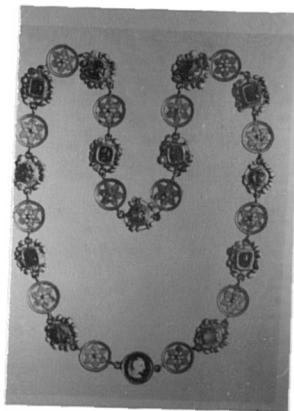


Fig. 38

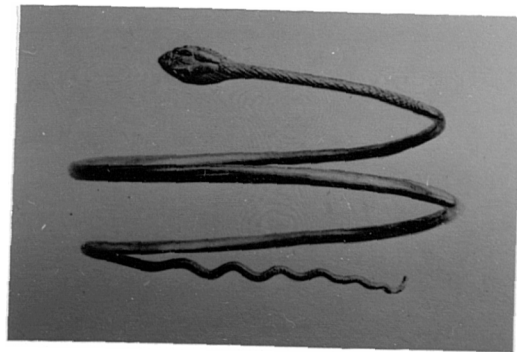


Fig. 39



Fig. 40a



Fig. 40b



Fig. 41



Fig. 42



Fig. 43

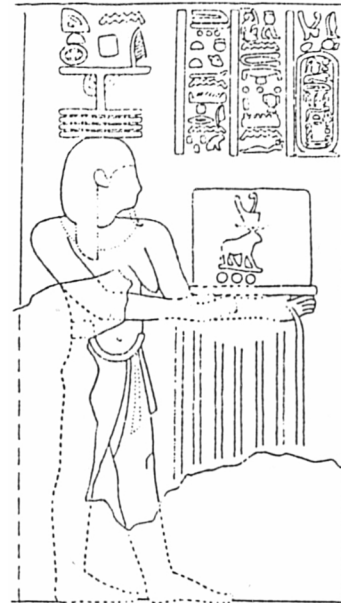


Fig. 44

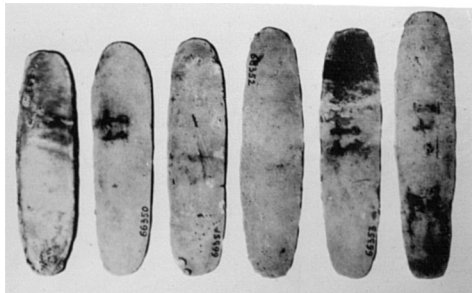


Fig. 45



Fig. 46

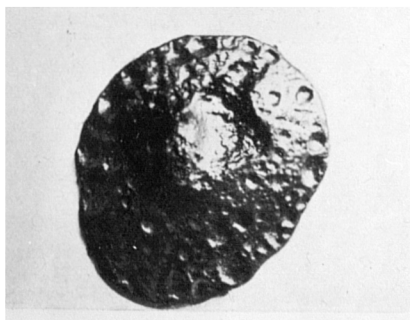


Fig. 47



Fig. 48



Fig. 49



Fig. 50



Fig. 51

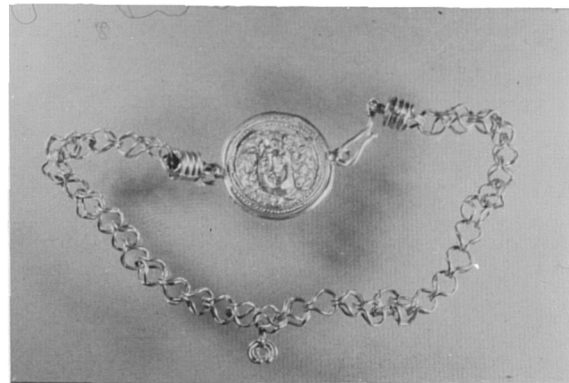


Fig. 52



Fig. 53

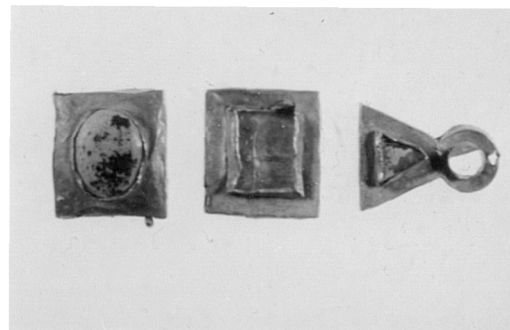


Fig. 54



Fig. 55



Fig. 56



Fig. 57



Fig. 58



Fig. 59

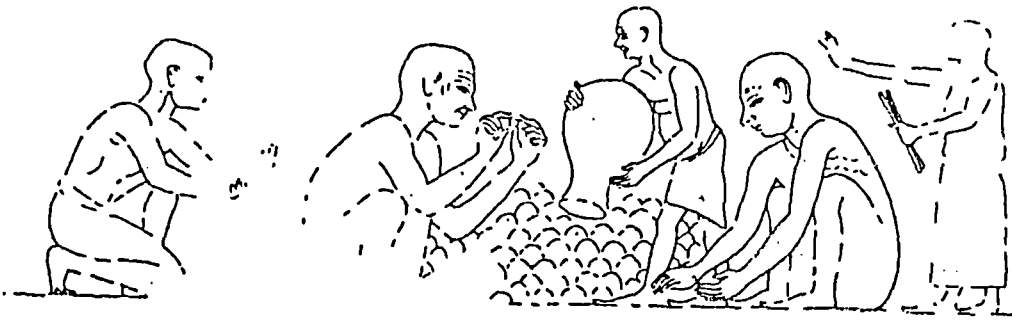


Fig. 60

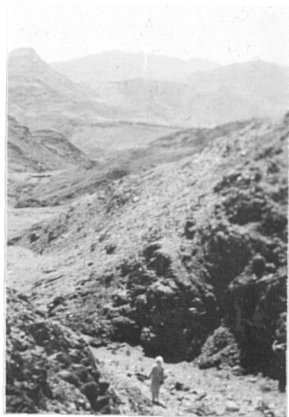


Fig. 61

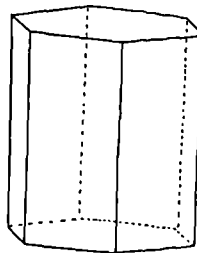


Fig. 62



Fig. 63

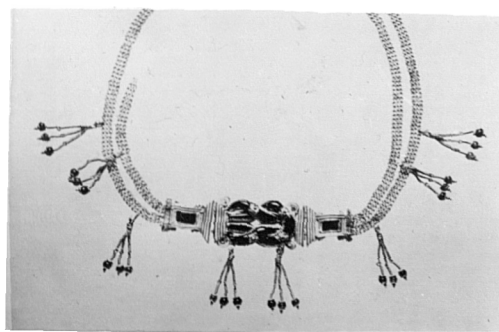


Fig. 64



Fig. 65



Fig. 66

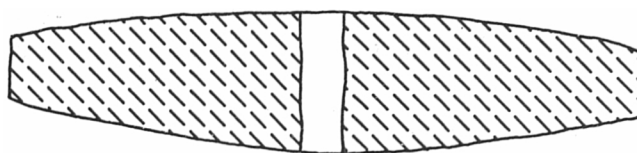


Fig. 67



Fig. 68

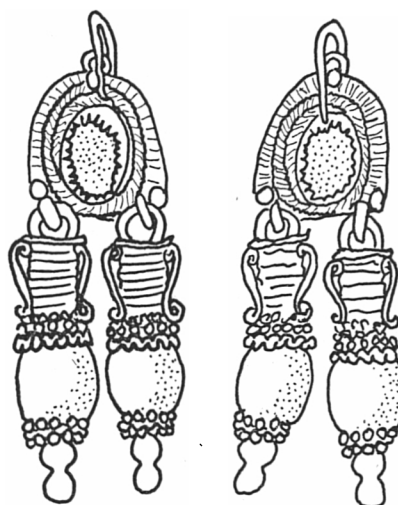


Fig. 69

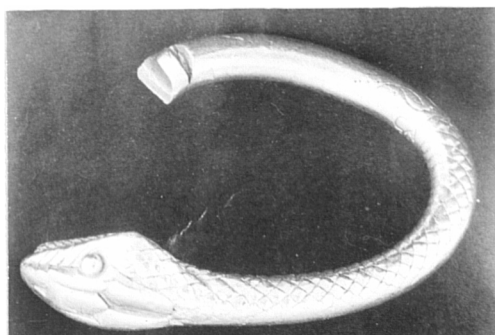


Fig. 70



Fig. 71



Detail of fig. 71

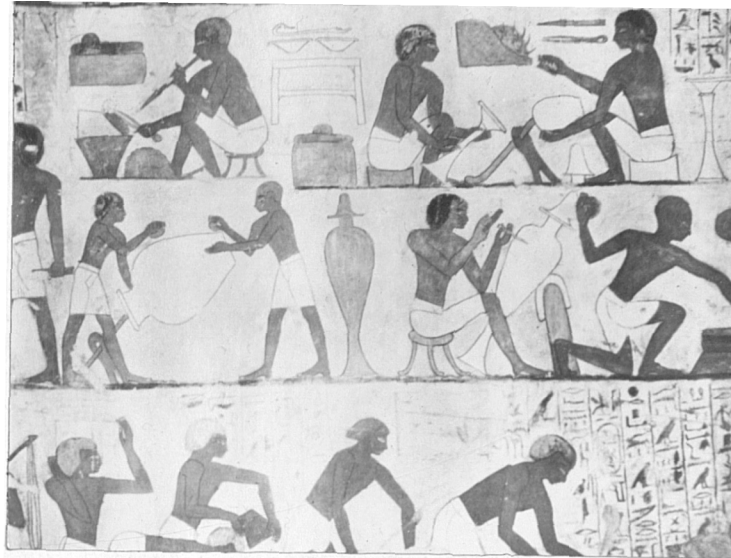


Fig. 72



Fig. 73a

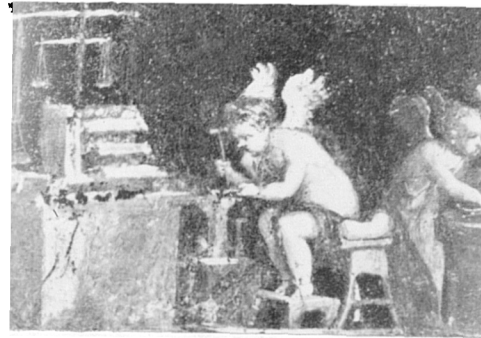


Fig. 73b



Fig. 73c

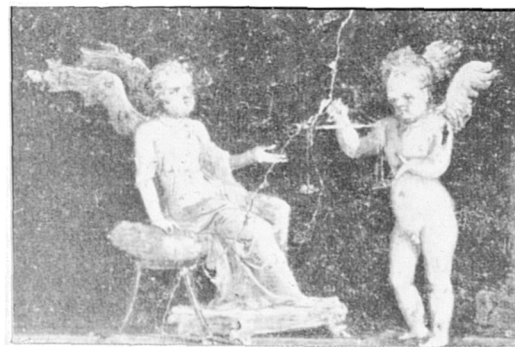


Fig. 73d



Fig. 74



Fig. 75

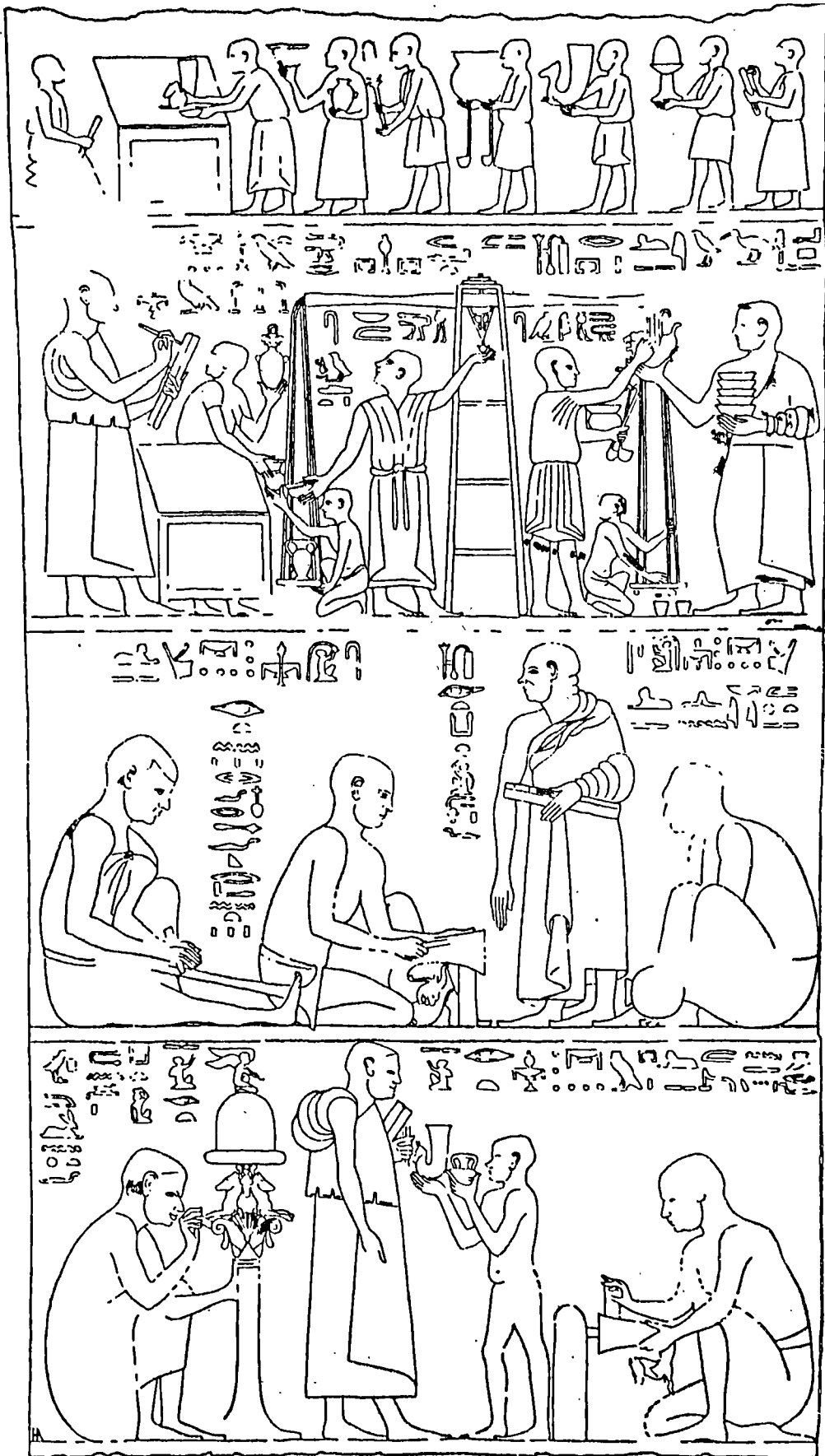


Fig. 76



Fig. 77a



Fig. 77b



Fig. 78a



Fig. 78b

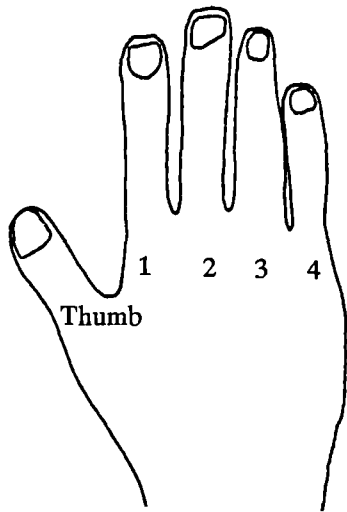


Fig. 79



Fig. 80



Fig. 81



Fig. 82



Fig. 83



Fig. 84



Fig. 85



Detail of fig. 85



Fig. 86



Detail of fig. 86



Fig. 87



Fig. 88



Fig. 89



Fig. 90



Fig. 91

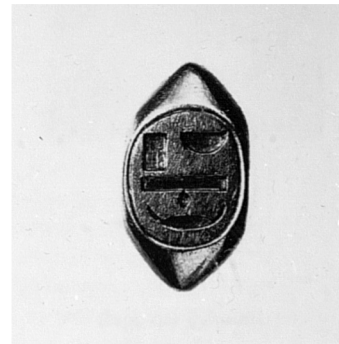


Fig. 92

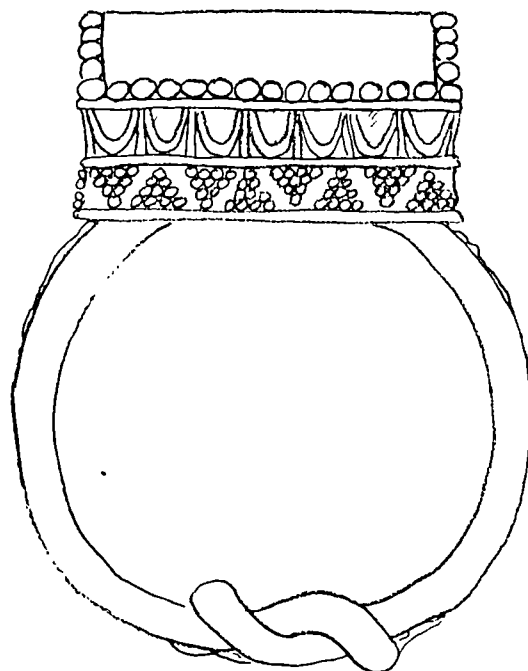


Fig. 93

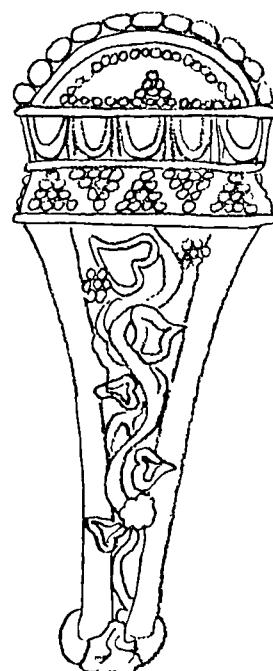




Fig. 94a



Fig. 94b

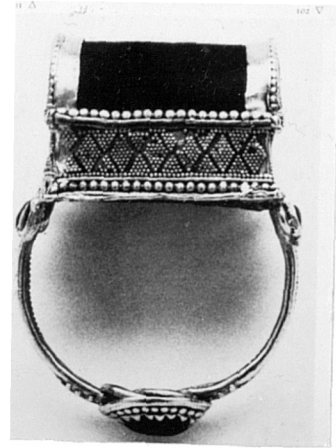


Fig. 95a



Fig. 95b

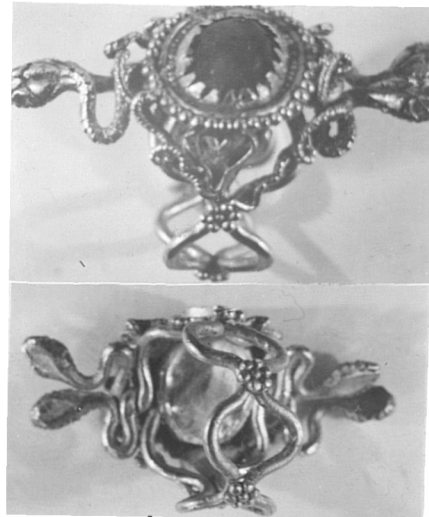


Fig. 96



Fig. 97



Fig. 98



Fig. 99

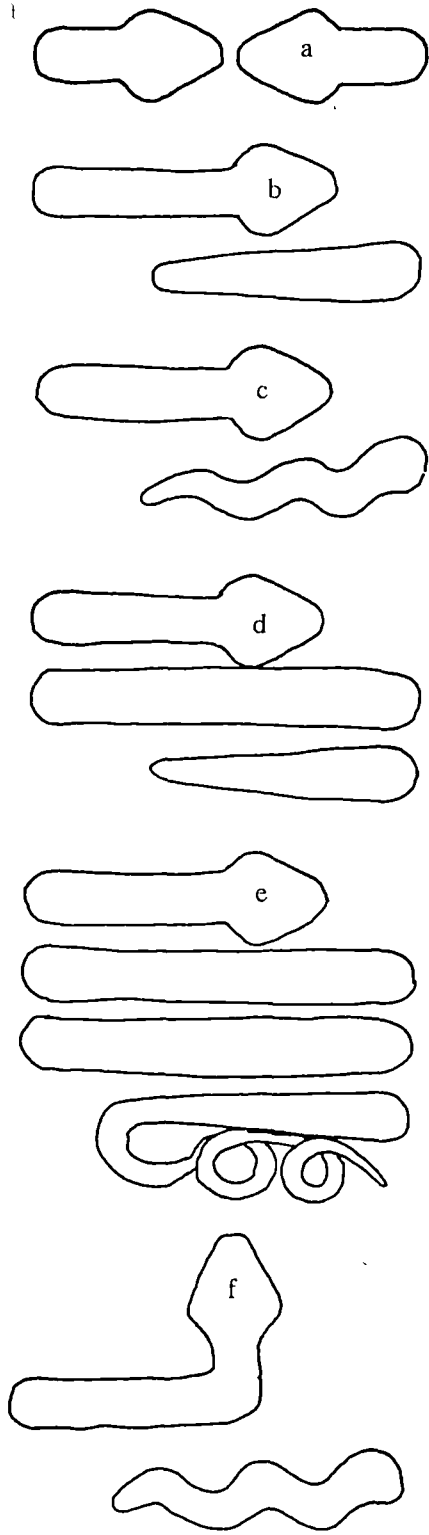


Fig. 100



Fig. 101

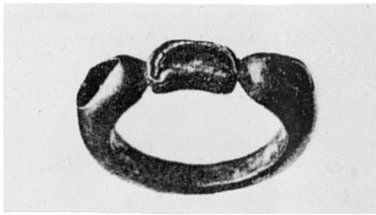


Fig. 102

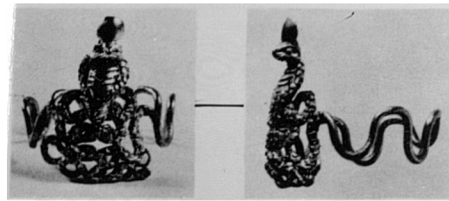


Fig. 103

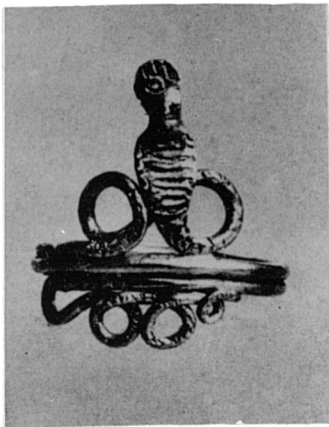


Fig. 104

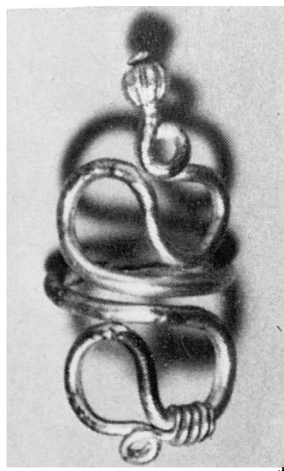


Fig. 105



Fig. 106



Fig. 107



Fig. 108

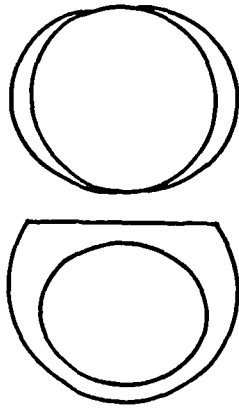


Fig. 109



Fig. 110



Fig. 111

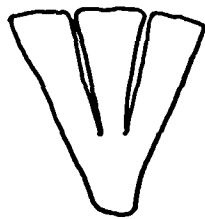
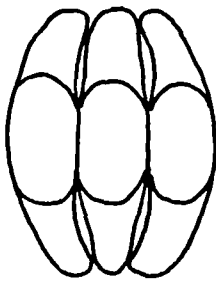


Fig. 112

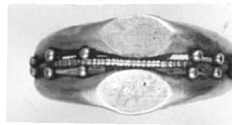


Fig. 113



Fig. 115



Fig. 114



Fig. 116

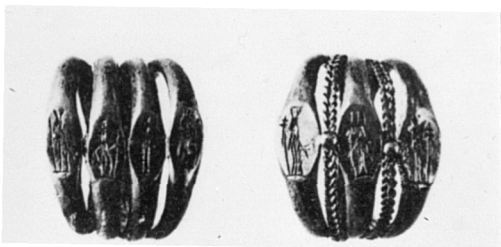


Fig. 117

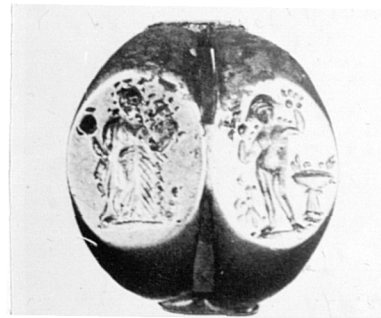


Fig. 118

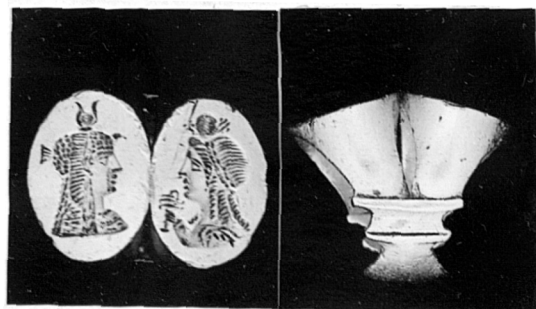


Fig. 119

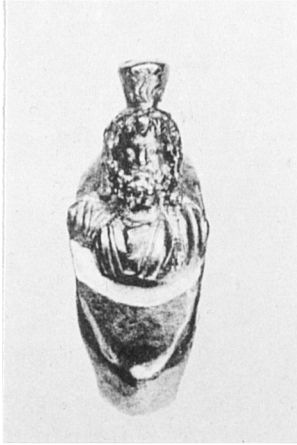


Fig. 120



Fig. 121



Fig. 122

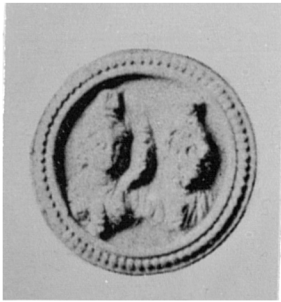


Fig. 123



Fig. 124



Fig. 125



Fig. 126

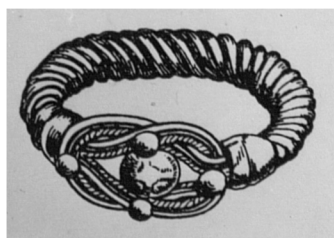
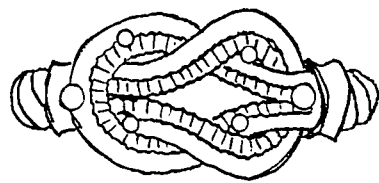


Fig. 127

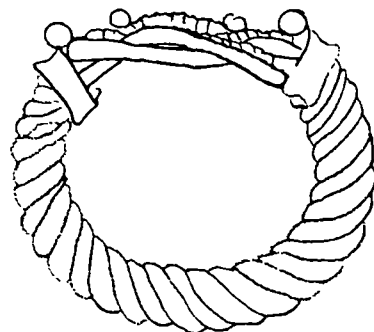


Fig. 128

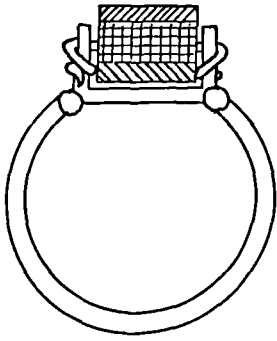


Fig. 129

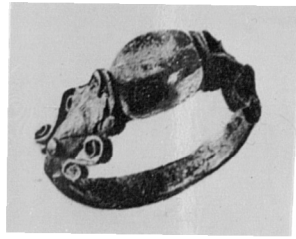


Fig. 130

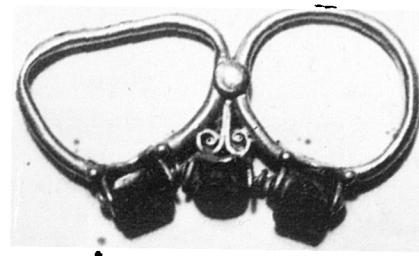


Fig. 131

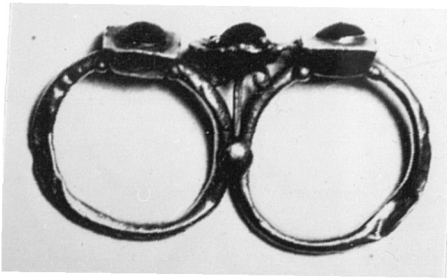


Fig. 132

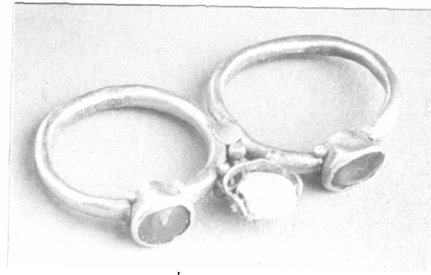


Fig. 133

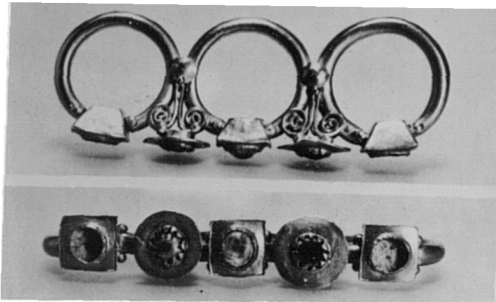


Fig. 134



Fig. 135



Fig. 136

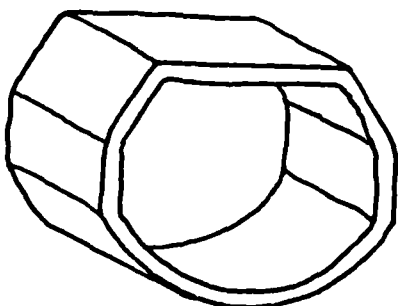


Fig. 137



Fig. 138



Fig. 139



Fig. 140



Fig. 141



Fig. 143



Fig. 142

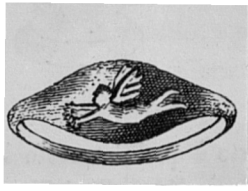


Fig. 144



Fig. 145



Fig. 146

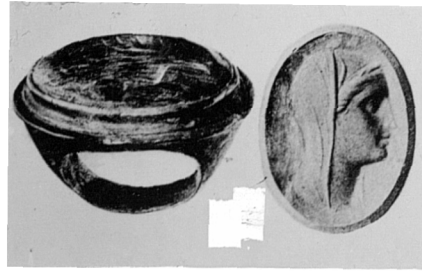


Fig. 147

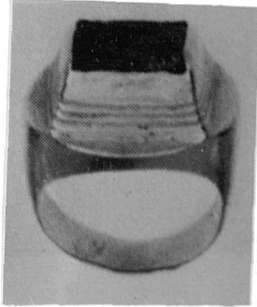


Fig. 148

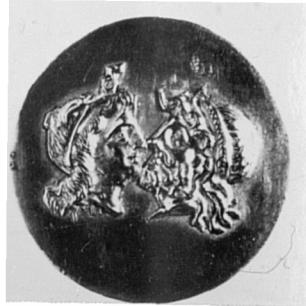


Fig. 149

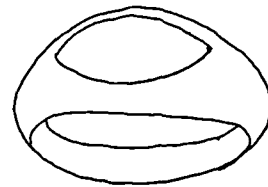


Fig. 150



Fig. 151

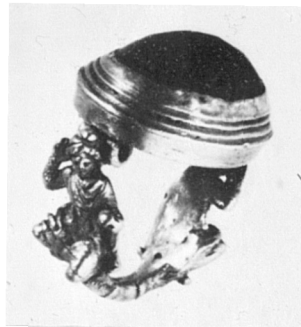


Fig. 152

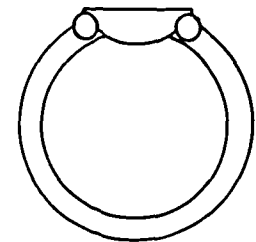
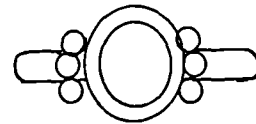


Fig. 153



Fig. 154

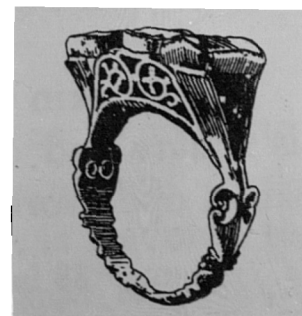


Fig. 155

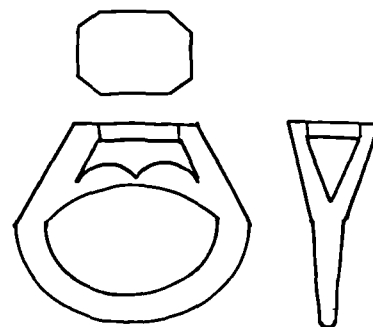


Fig. 156



Fig. 157

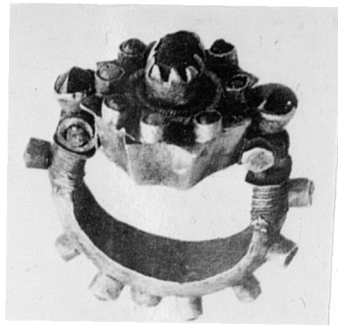


Fig. 158



Fig. 159



Fig. 160a



Fig. 160b

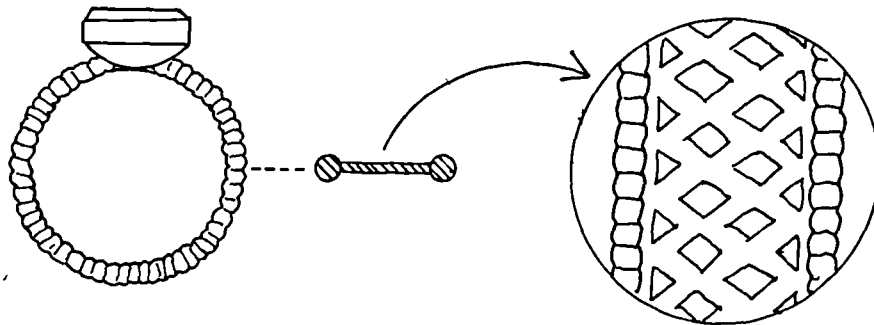


Fig. 161



Fig. 162



Fig. 163



Fig. 164

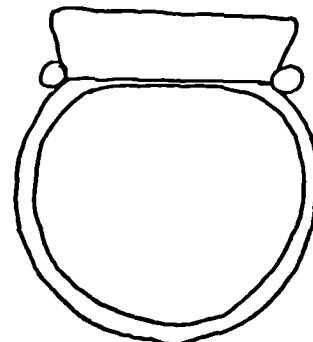
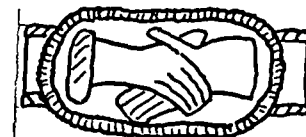


Fig. 165

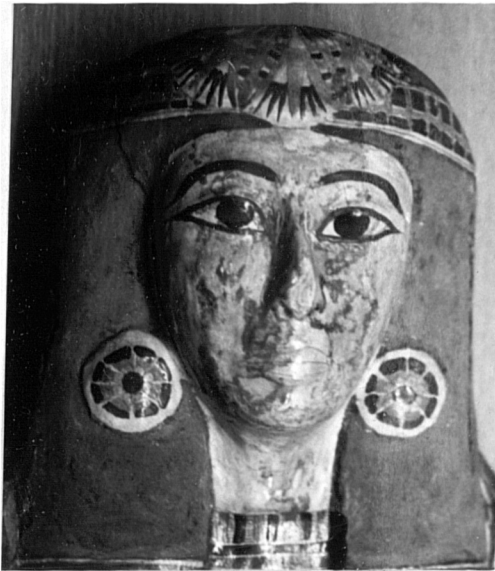


Fig. 166



Fig. 167

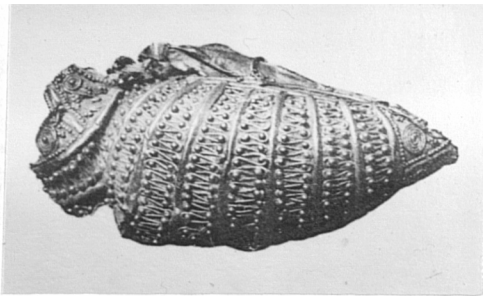


Fig. 168a

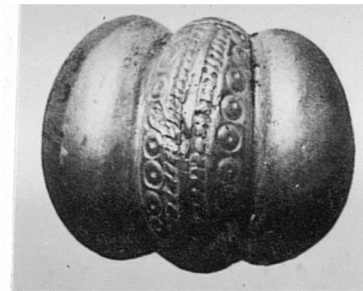


Fig. 168b

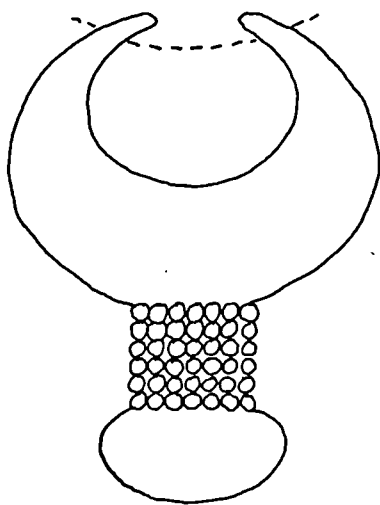


Fig. 169

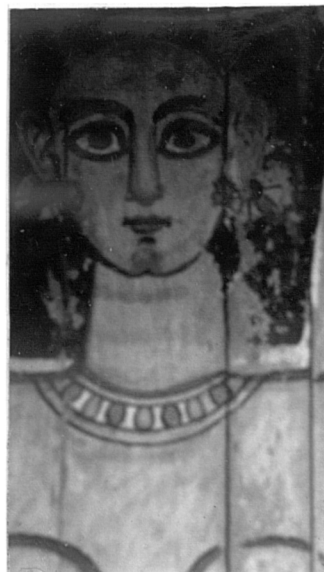


Fig. 170



Fig. 171



Fig. 172



Fig. 173



Fig. 174

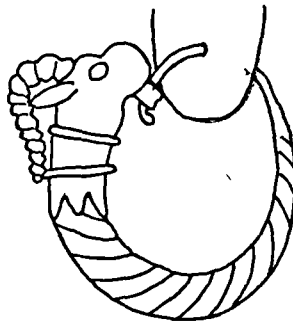


Fig. 175a

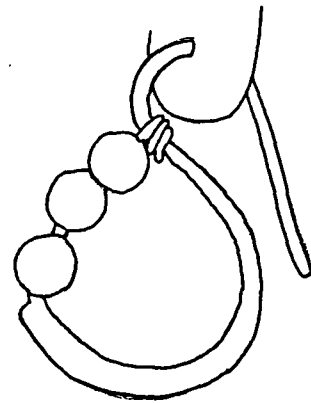


Fig. 175b

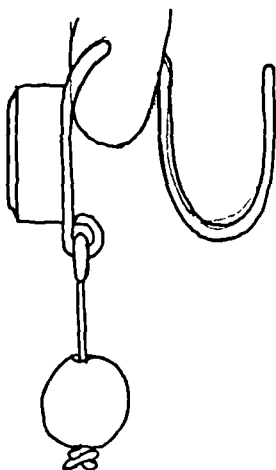


Fig. 175c

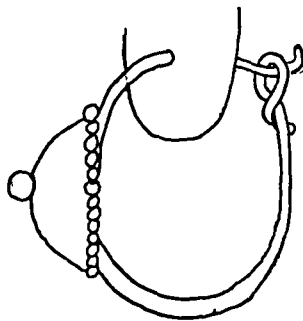


Fig. 175d

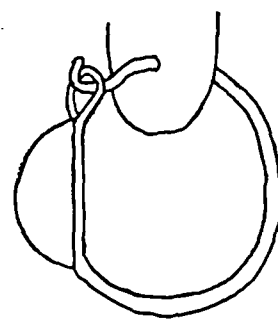


Fig. 175e



Fig. 176

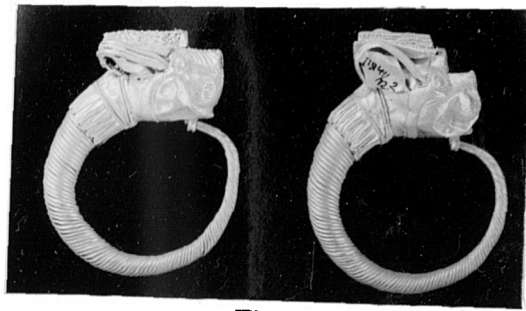


Fig. 177

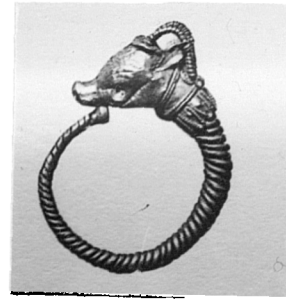


Fig. 178



Fig. 179

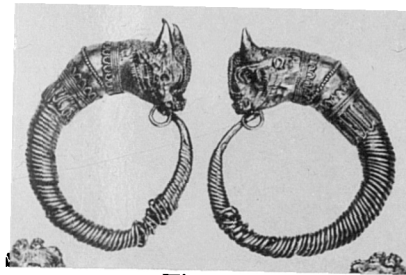


Fig. 180



Fig. 181

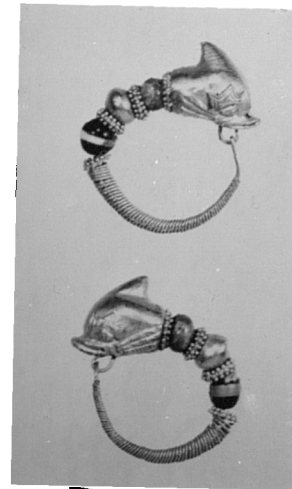


Fig. 182



Fig. 183



Fig. 184



Fig. 185

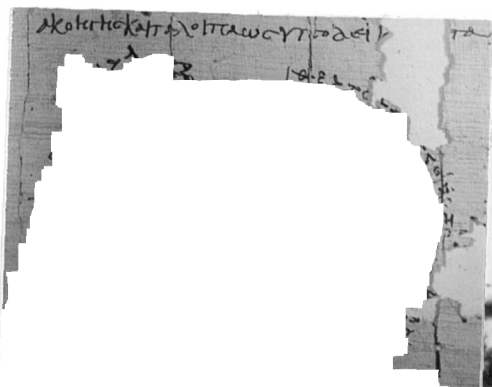


Fig. 186



Fig. 187



Fig. 188

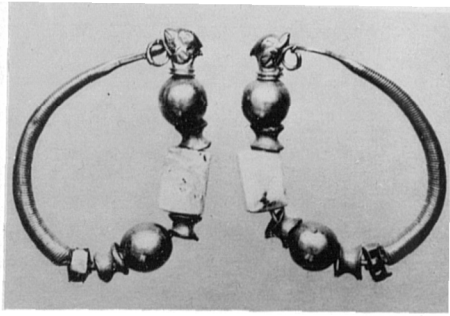


Fig. 189

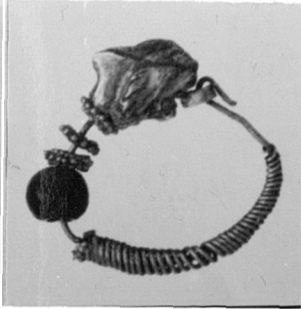


Fig. 190

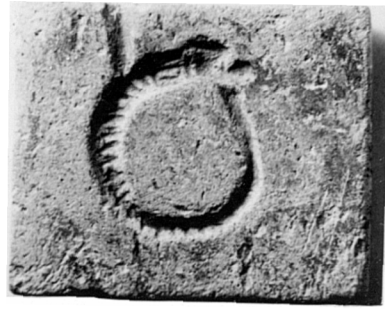


Fig. 191



Fig. 192



Fig. 193

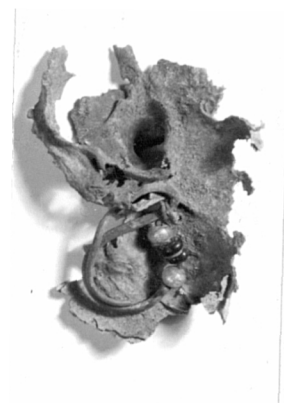


Fig. 194

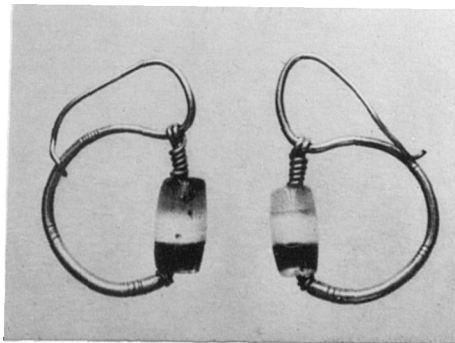


Fig. 195

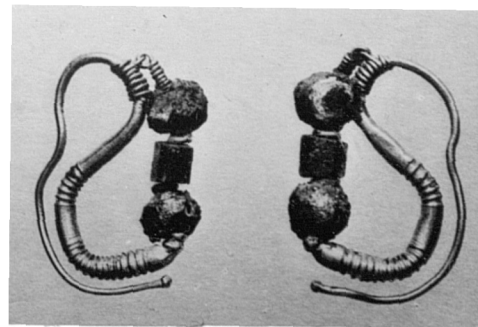


Fig. 196

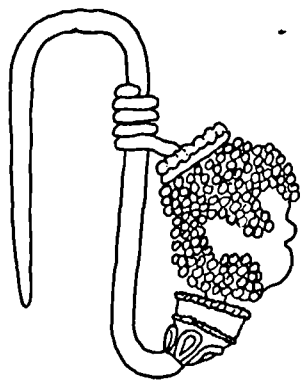


Fig. 197



Fig. 198

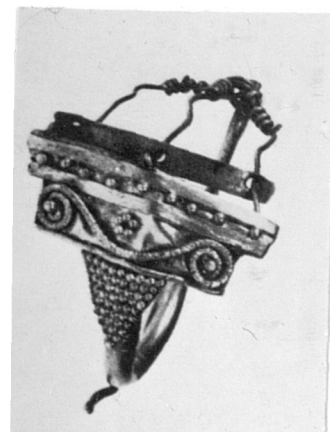


Fig. 199

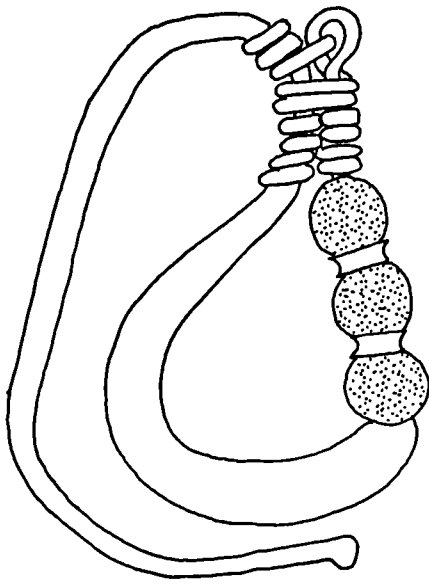


Fig. 200

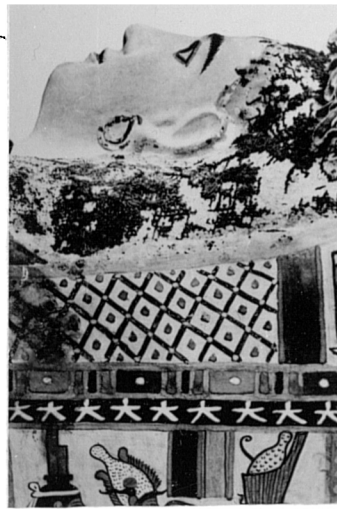


Fig. 201

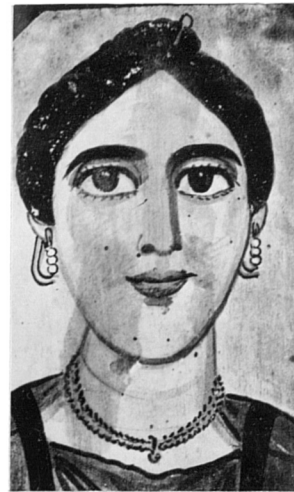


Fig. 202

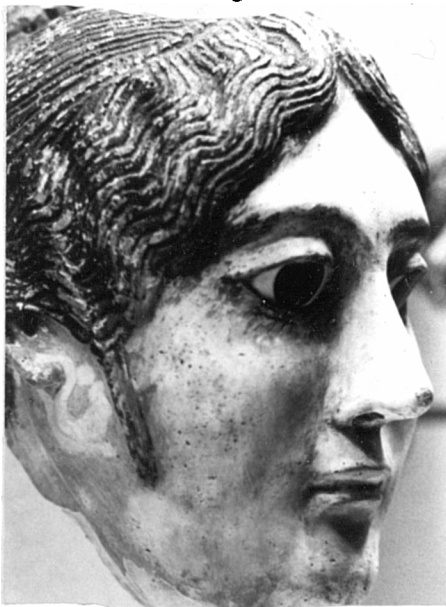


Fig. 203

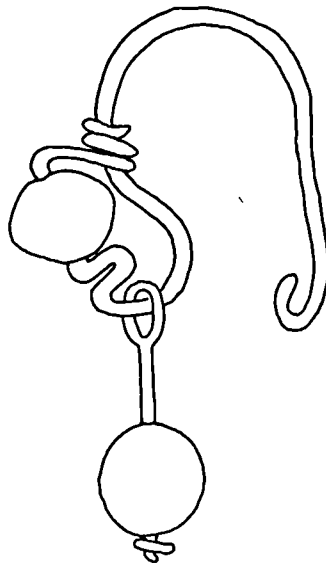


Fig. 204



Fig. 205



Fig. 206



Fig. 207



Fig. 208

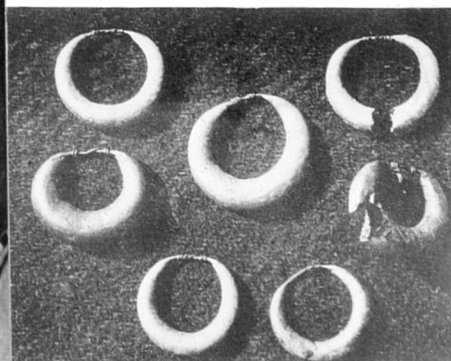


Fig. 209

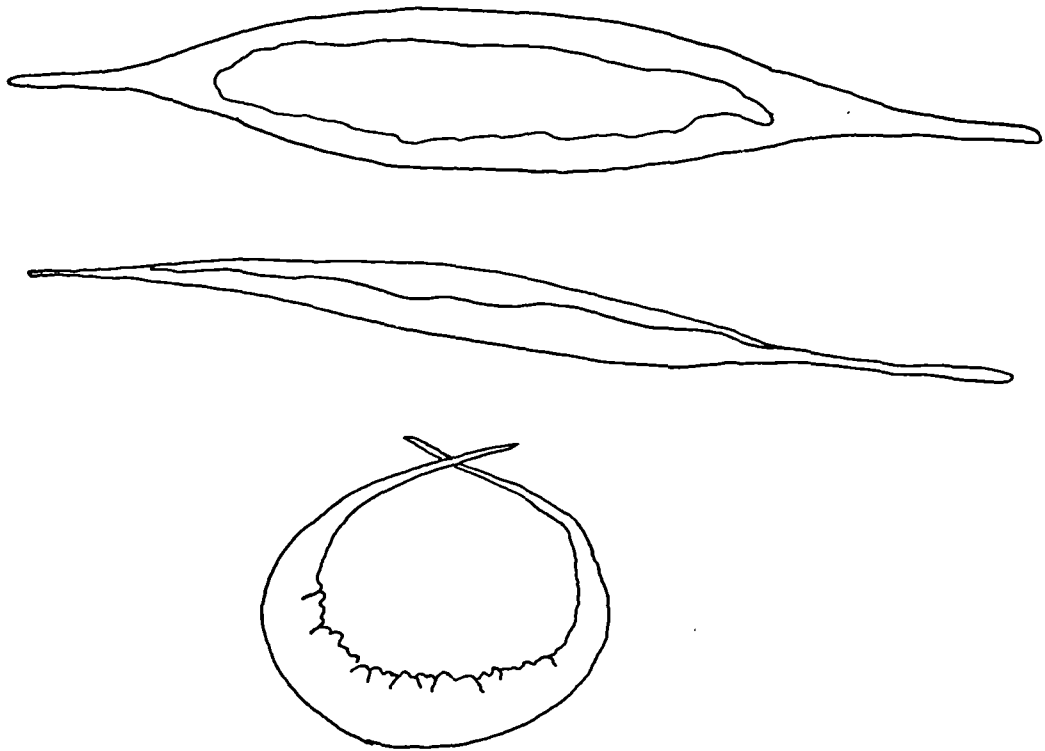


Fig. 210

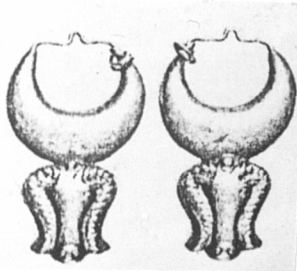


Fig. 211

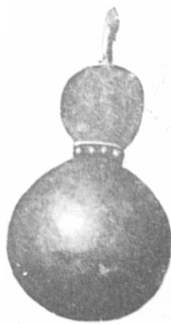


Fig. 212

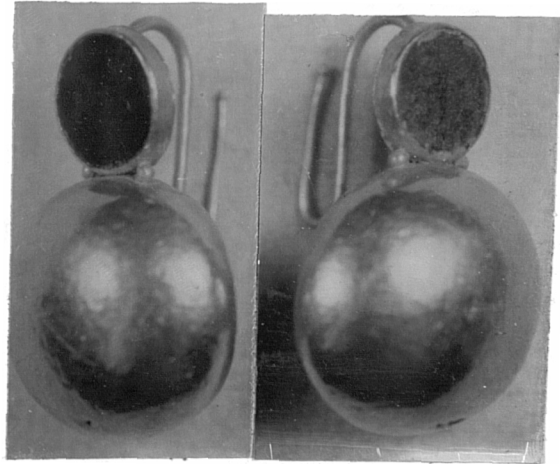


Fig. 213a

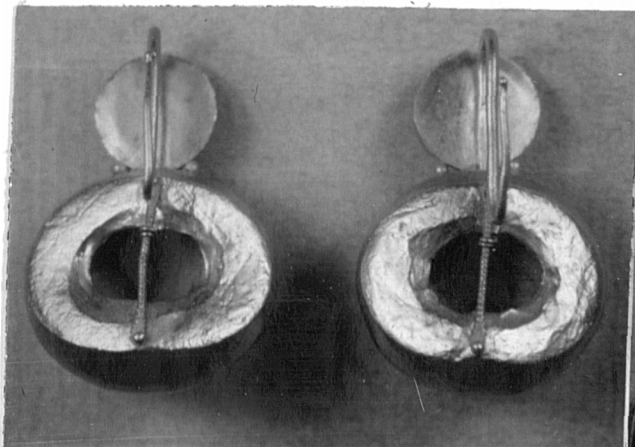


Fig. 213b

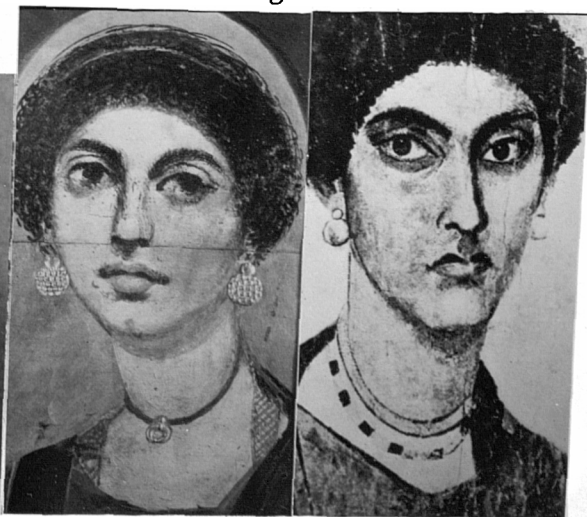


Fig. 214

Fig. 215



Fig. 216

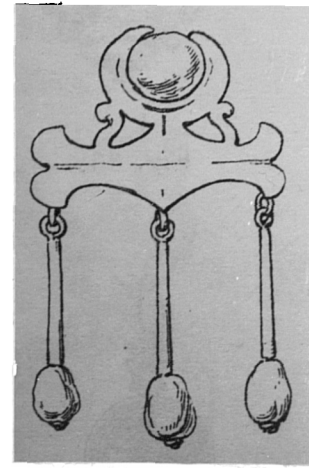


Fig. 217

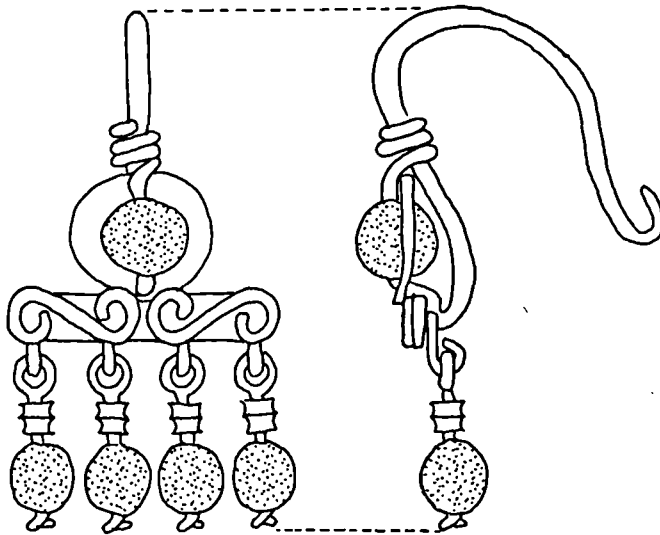


Fig. 218

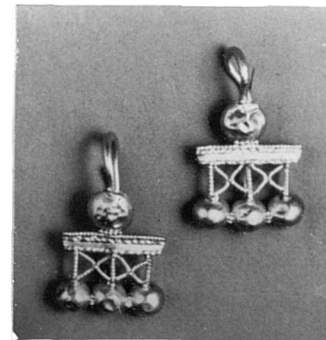


Fig. 219



Fig. 220



Fig. 221

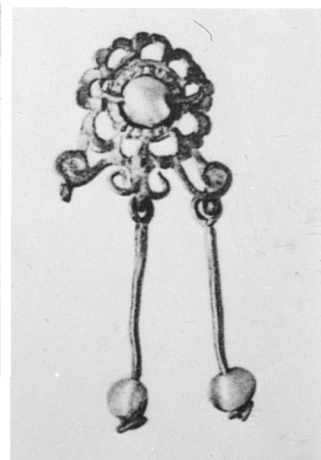


Fig. 222



Fig. 223



Fig. 224



Fig. 225

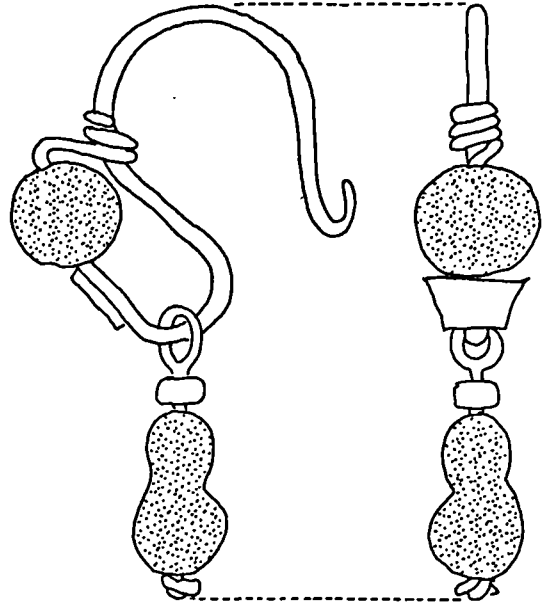


Fig. 226



Fig. 227

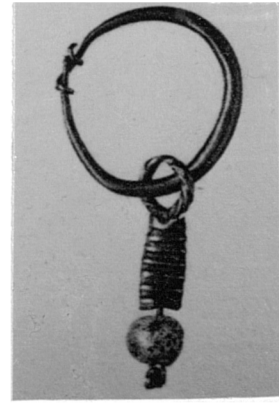


Fig. 228

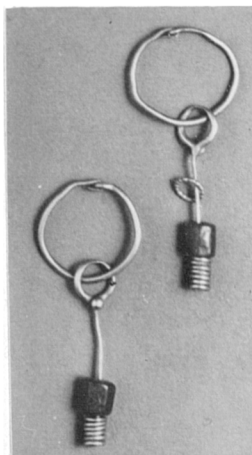


Fig. 229

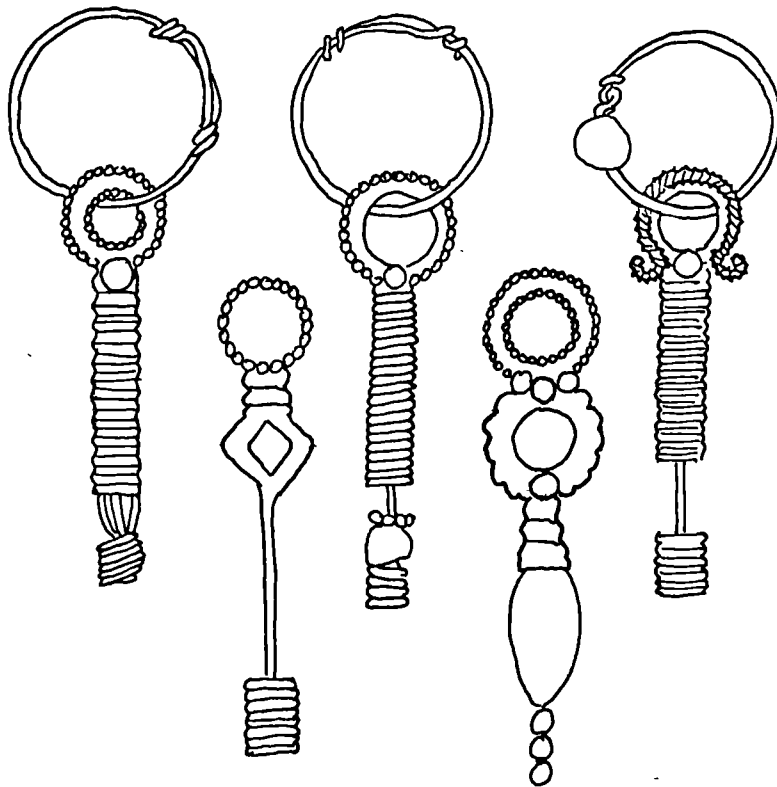


Fig. 230



Fig. 231



Fig. 232



Fig. 233

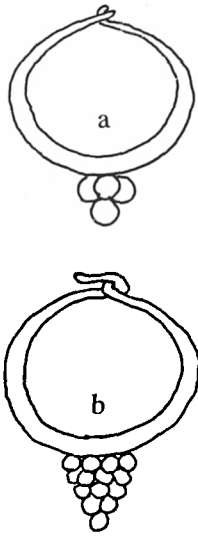


Fig. 234

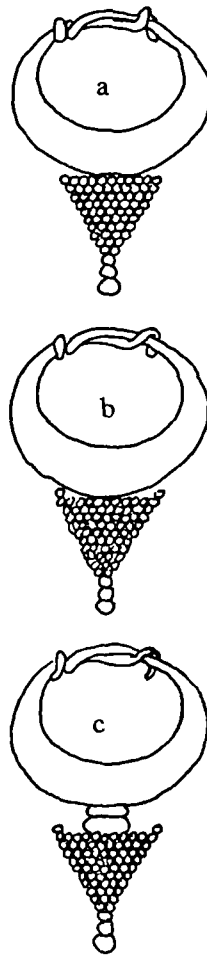


Fig. 236



Fig. 237



Fig. 235

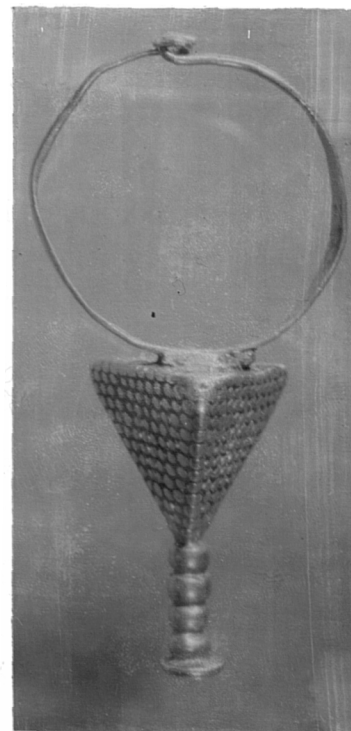


Fig. 238

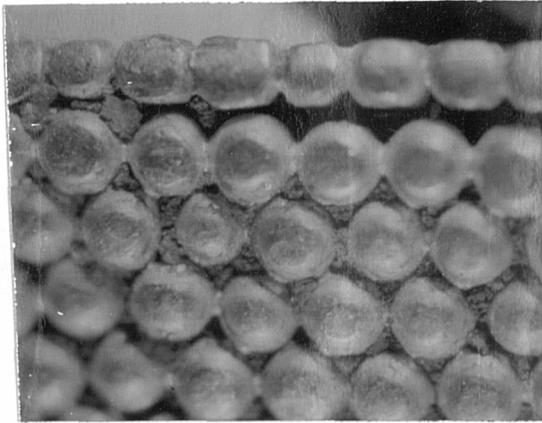


Fig. 239

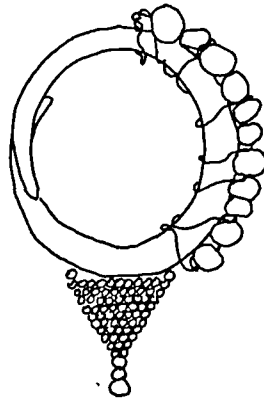


Fig. 240



Fig. 241

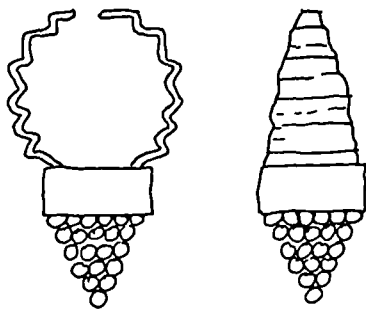


Fig. 242

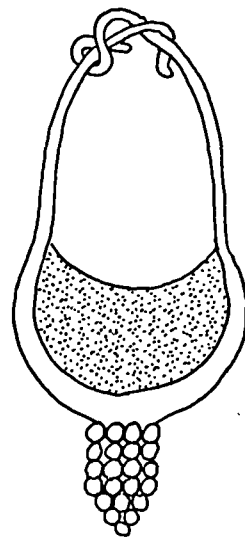


Fig. 243

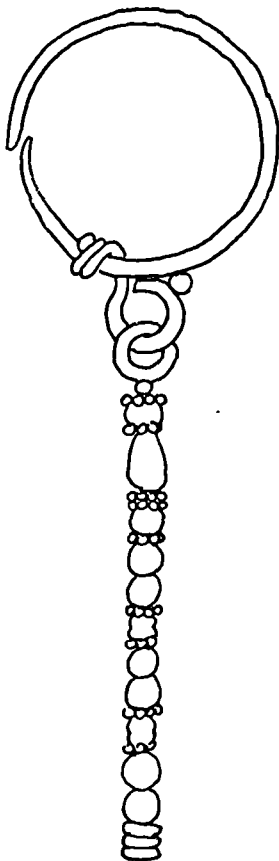


Fig. 245

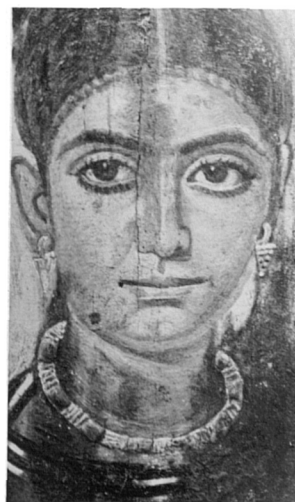


Fig. 244

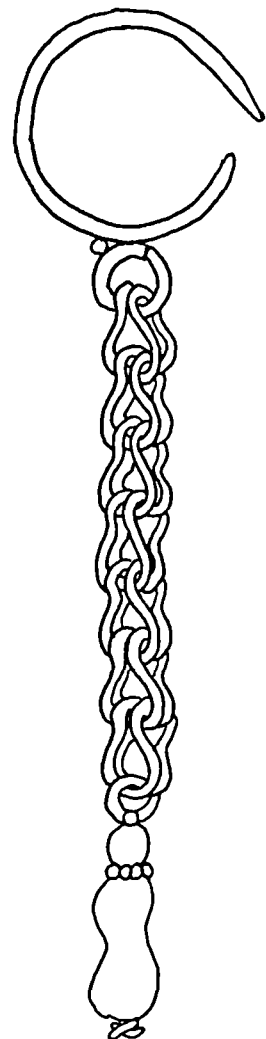


Fig. 246



Fig. 247



Fig. 248



Fig. 249



Fig. 250



Fig. 251

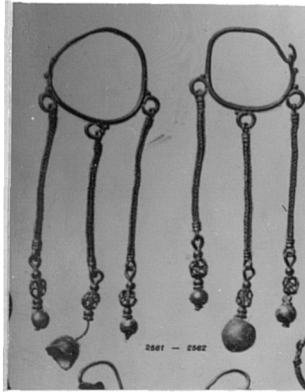


Fig. 252



Fig. 253a

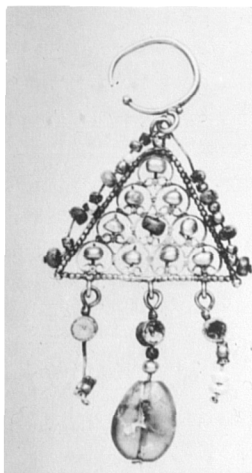


Fig. 254

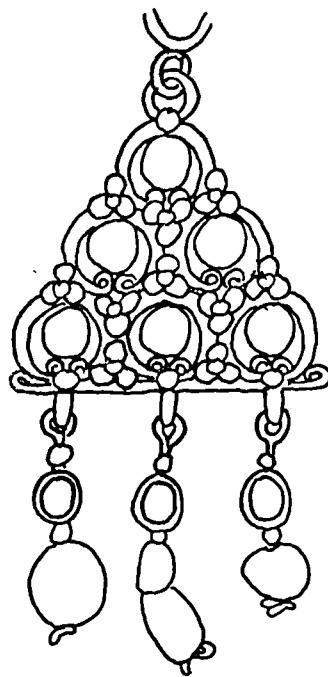


Fig. 255

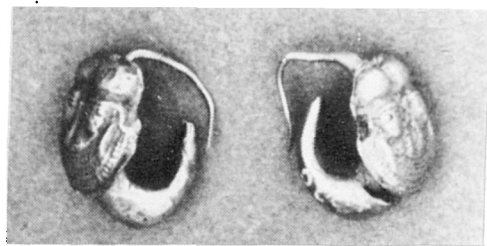


Fig. 256



Fig. 257



Fig. 258

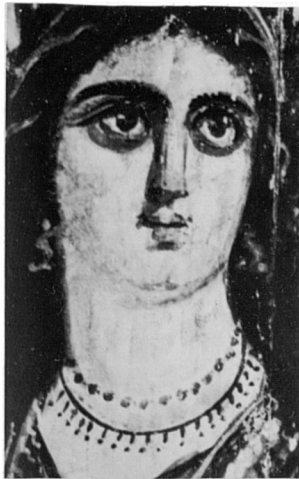


Fig. 259

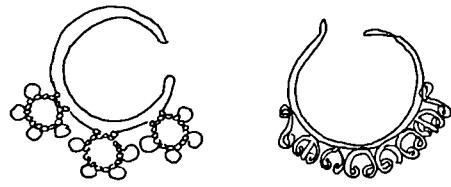


Fig. 260

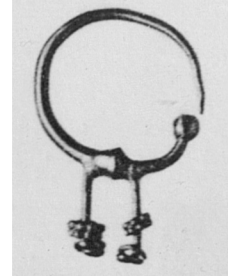


Fig. 261

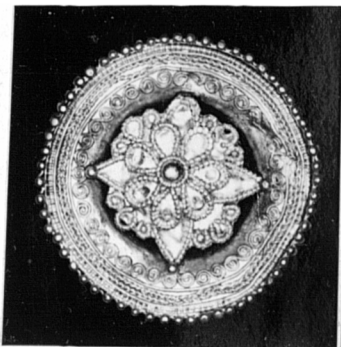


Fig. 262a



Fig. 262b

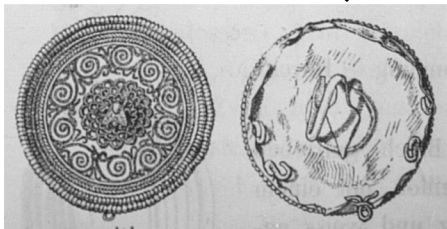


Fig. 263

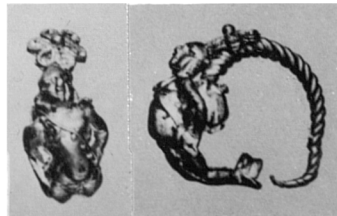


Fig. 264



Fig. 265



Fig. 266

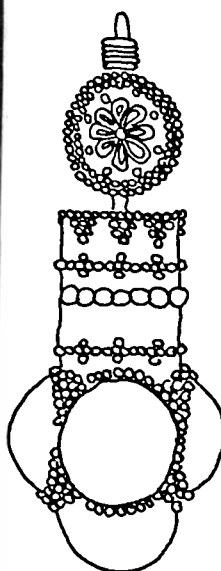


Fig. 267

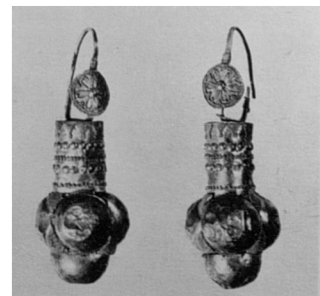


Fig. 268

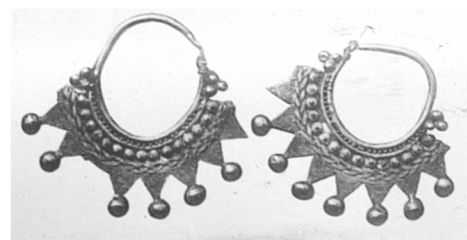


Fig. 269



Fig. 270



Fig. 271

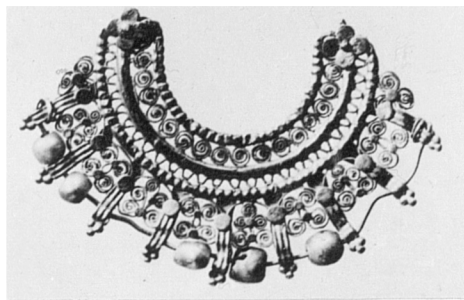


Fig. 272



Fig. 273



Fig. 274



Fig. 277



Fig. 275



Fig. 276

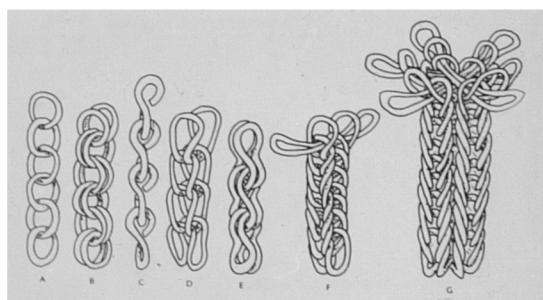


Fig. 278

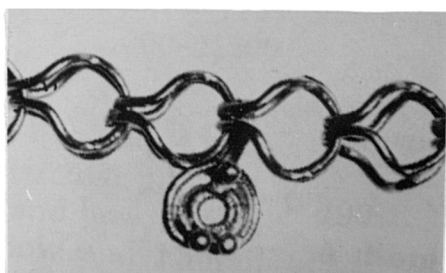


Fig. 279



Fig. 280



Fig. 281



Fig. 282



Fig. 283

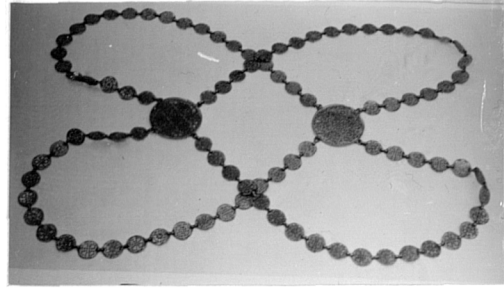


Fig. 284

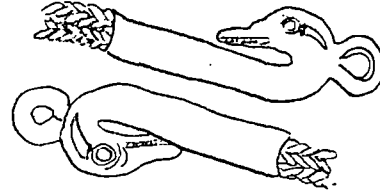


Fig. 285

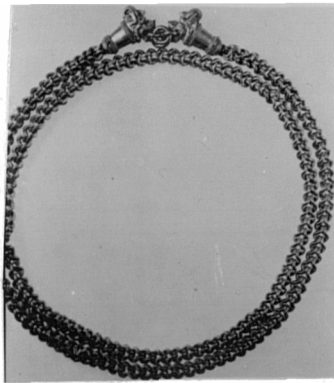


Fig. 286a

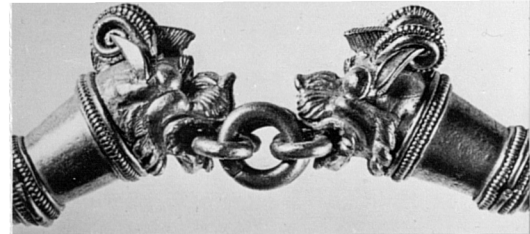


Fig. 286b

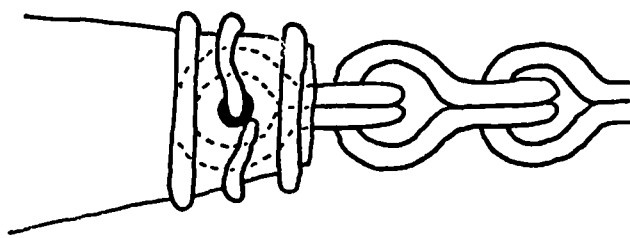


Fig. 287



Fig. 288

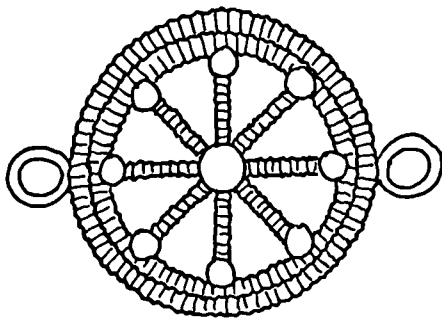


Fig. 289

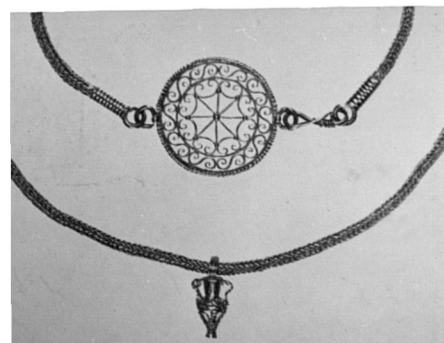


Fig. 290

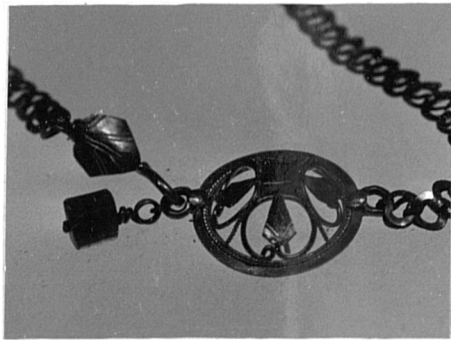


Fig. 291

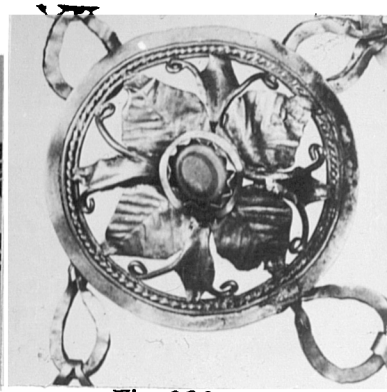


Fig. 292



Fig. 293



Fig. 294

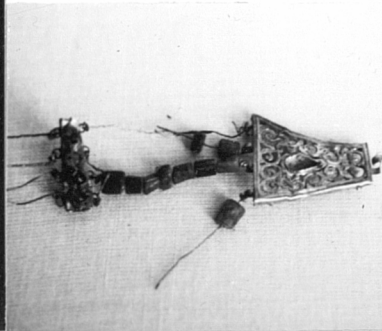


Fig. 295

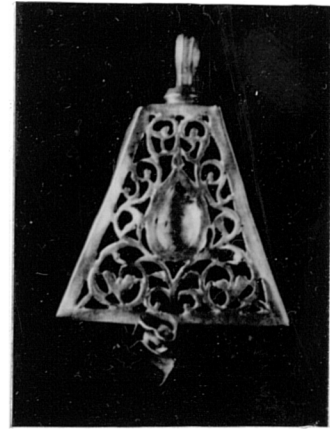


Fig. 296



Fig. 297



Fig. 298



Fig. 299a

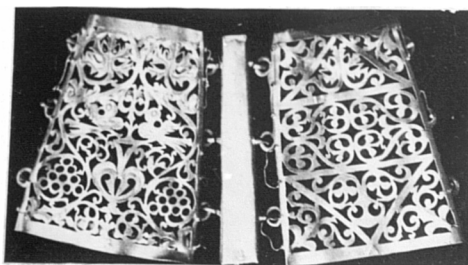


Fig. 299b

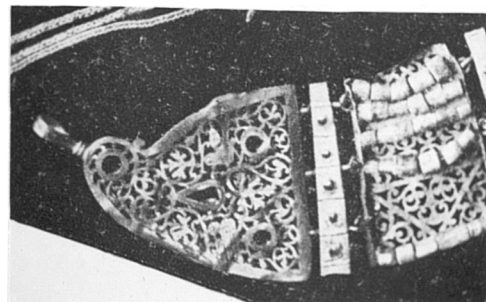


Fig. 299c

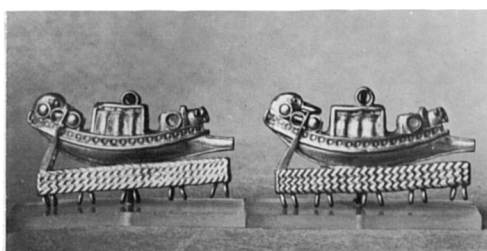


Fig. 300

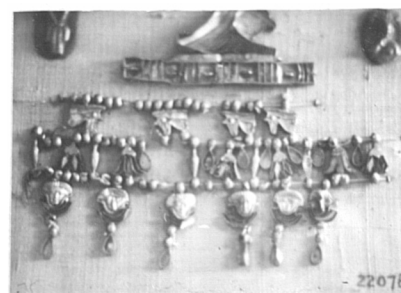


Fig. 301



Fig. 302

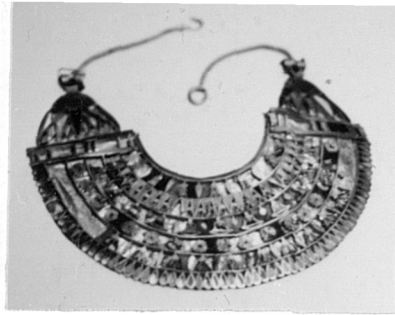


Fig. 303

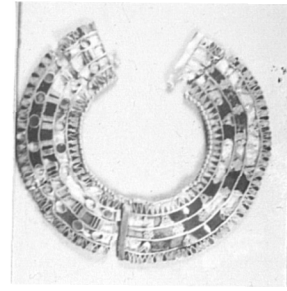


Fig. 304

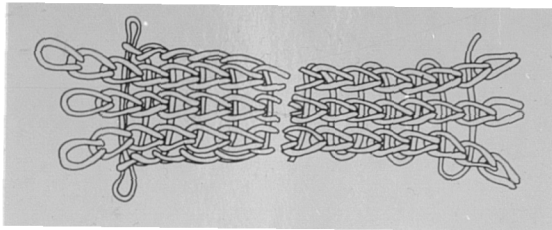


Fig. 305

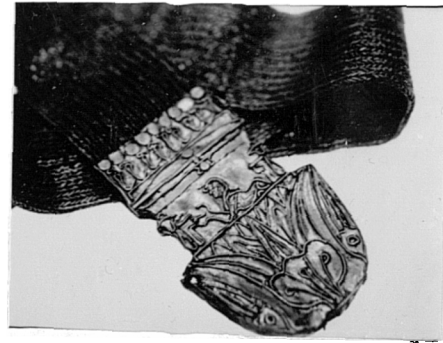


Fig. 306

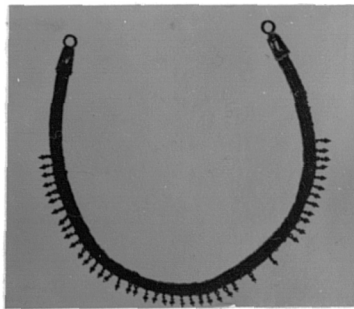


Fig. 307



Fig. 308



Fig. 309



Fig. 310



Fig. 311

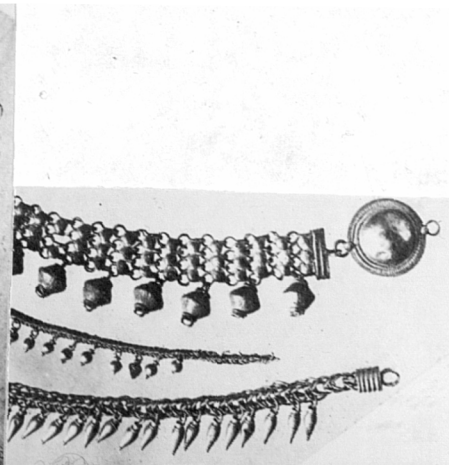


Fig. 312



Fig. 313



Fig. 314

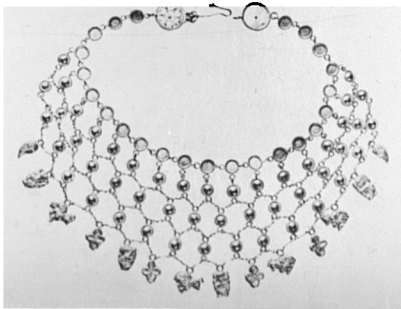


Fig. 315



Fig. 316

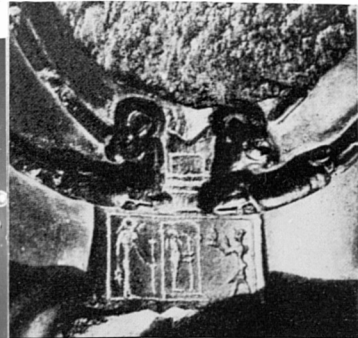


Fig. 317



Fig. 318



Fig. 319a



Fig. 319b

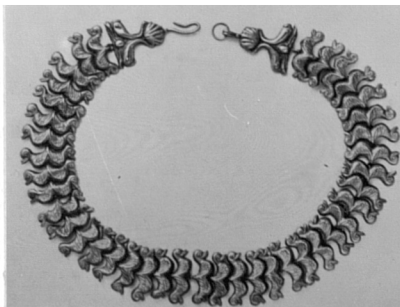


Fig. 320a

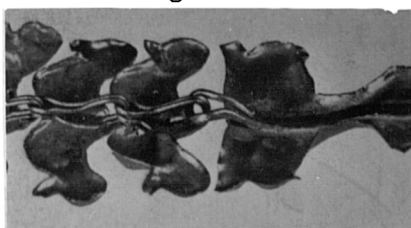


Fig. 320b

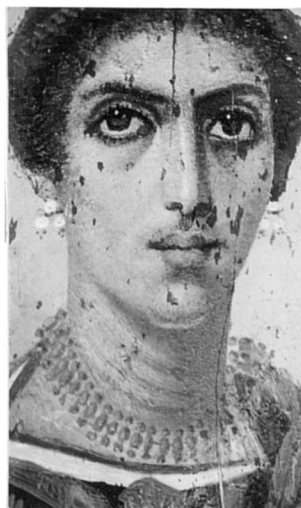


Fig. 321

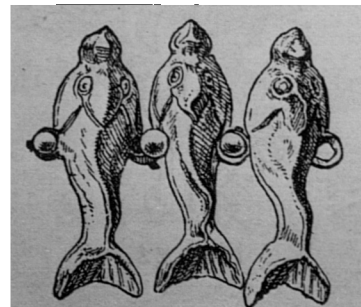


Fig. 322

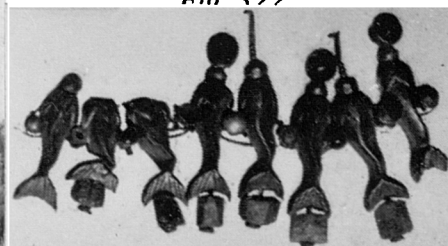


Fig. 323

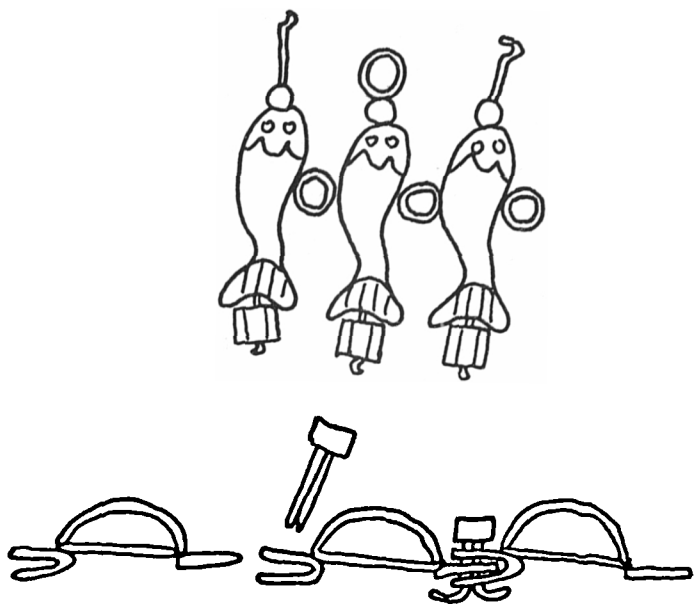


Fig. 324



Fig. 325a



Fig. 325b

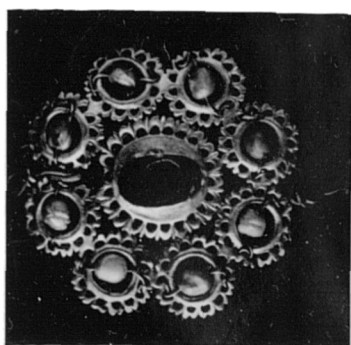


Fig. 326a

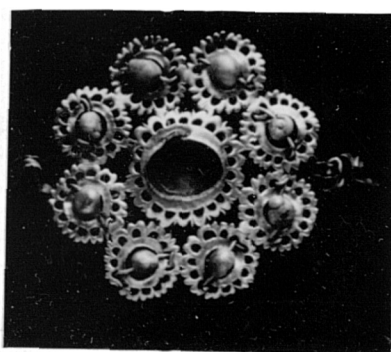


Fig. 326b

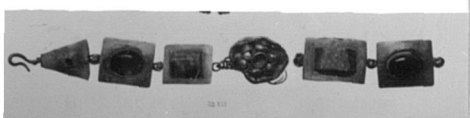


Fig. 327

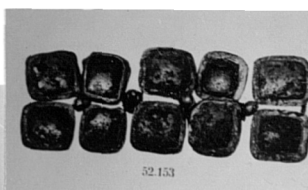


Fig. 328

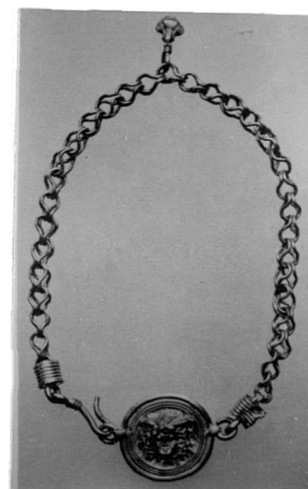


Fig. 329



Fig. 330

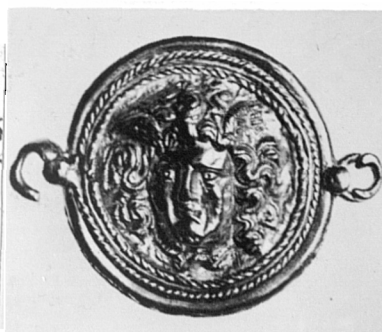


Fig. 331



Fig. 332

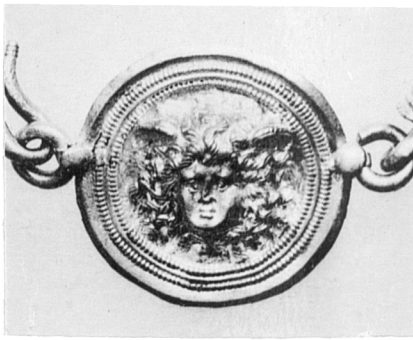


Fig. 333



Fig. 334a



Fig. 335



Fig. 336

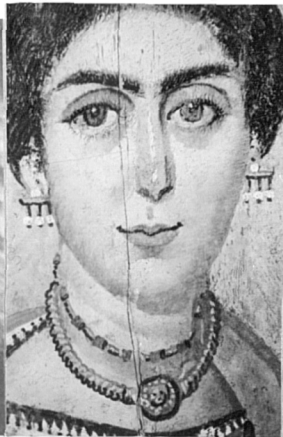


Fig. 337



Fig. 338

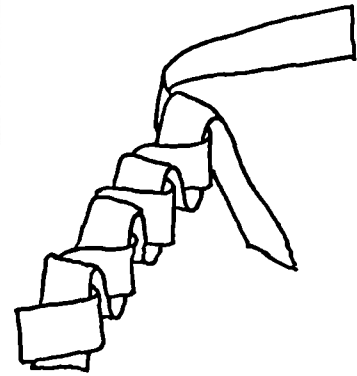


Fig. 339



Fig. 340



Fig. 341



Fig. 342

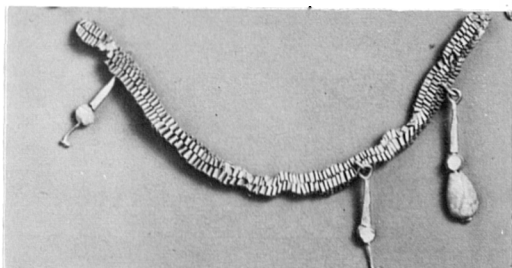


Fig. 343



Fig. 344a

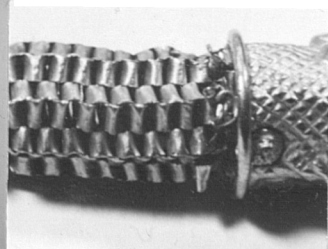


Fig. 344b



Fig. 345

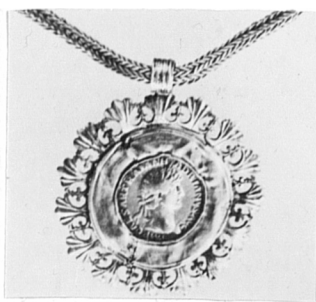


Fig. 346

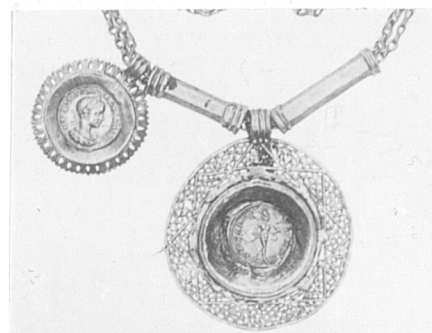


Fig. 347

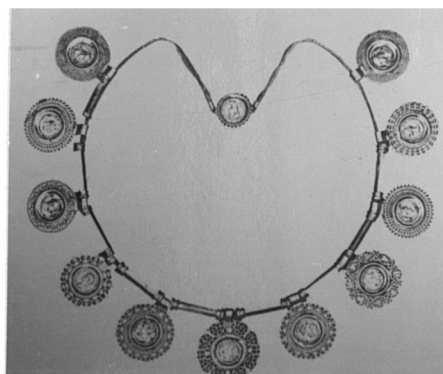


Fig. 348

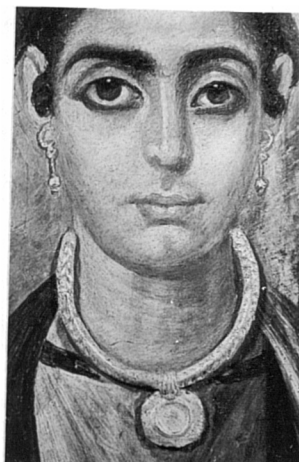


Fig. 349



Fig. 350



Fig. 351



Fig. 352



Fig. 353a



Fig. 353b

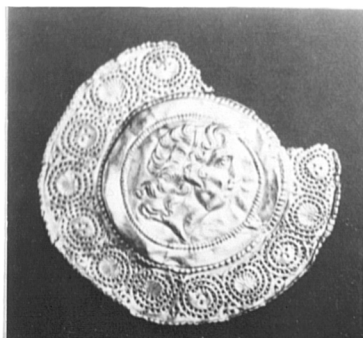


Fig. 354a



Fig. 354b



Fig. 355

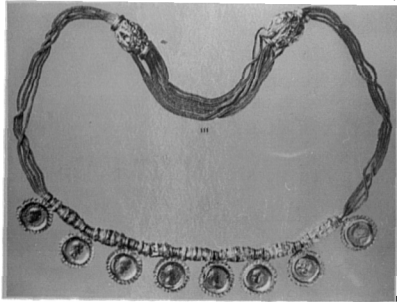


Fig. 356

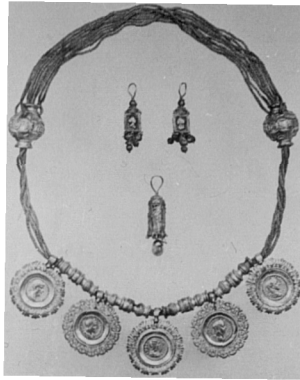


Fig. 357



Fig. 358

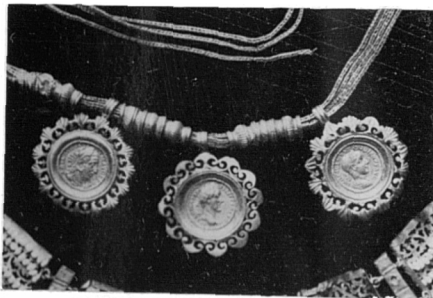


Fig. 359

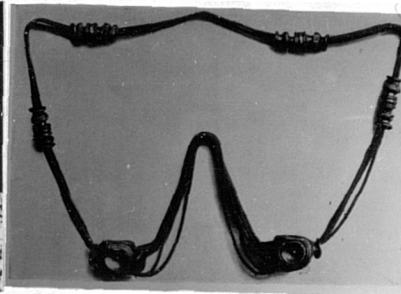


Fig. 360

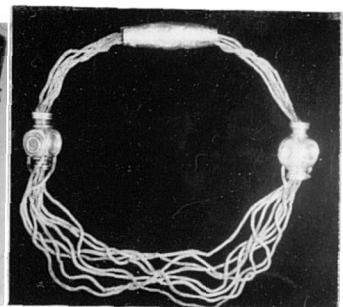


Fig. 361



Fig. 362



Fig. 363



Fig. 364

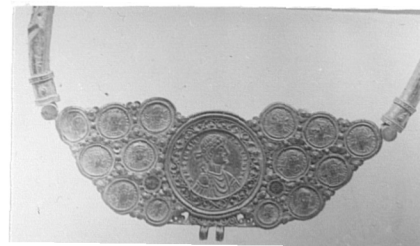


Fig. 365

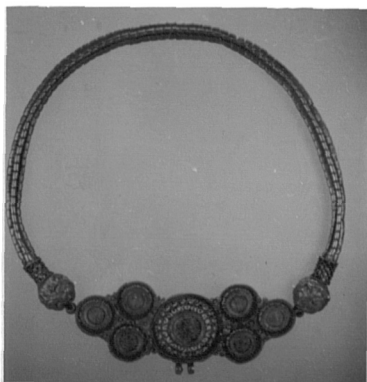


Fig. 366



Fig. 367



Fig. 368

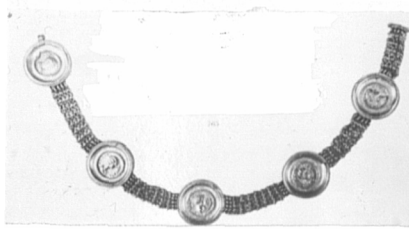


Fig. 369

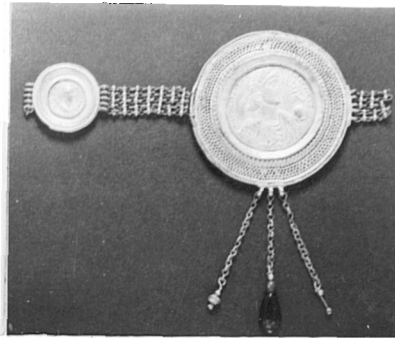


Fig. 370



Fig. 371



Fig. 372



Fig. 373



Fig. 374



Fig. 375



Fig. 376



Fig. 377



Fig. 378



Fig. 379



Fig. 380



Fig. 381



Fig. 382

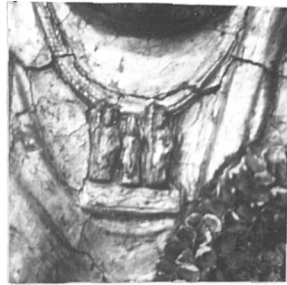


Fig. 383



Fig. 384a

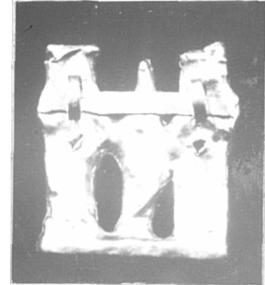


Fig. 384b



Fig. 387



Fig. 385



Fig. 386



Fig. 388



Fig. 389



Fig. 390



Fig. 391

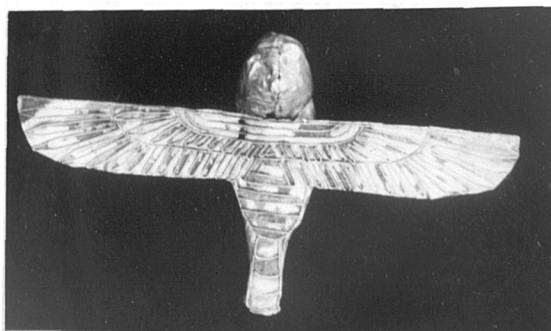


Fig. 392

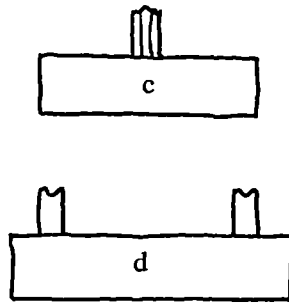
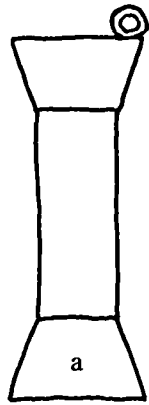


Fig. 393

Fig. 394



Fig. 395

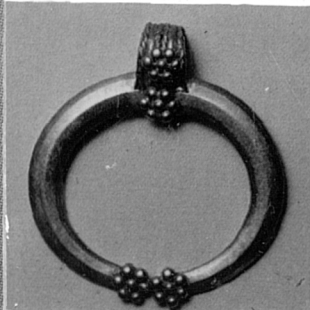


Fig. 396

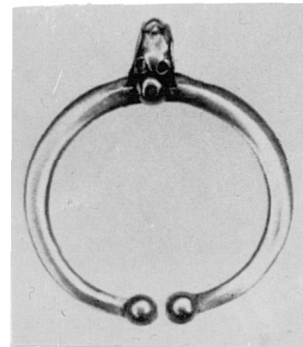


Fig. 397

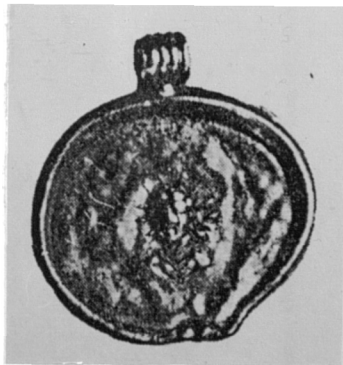


Fig. 398



Fig. 399



Fig. 400

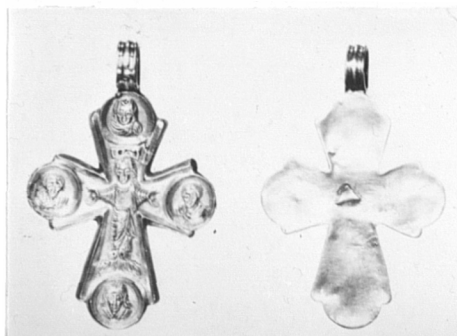


Fig. 401



Fig. 402

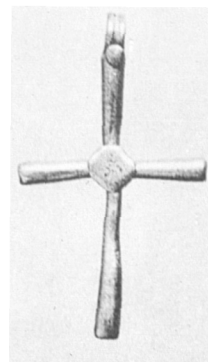


Fig. 403

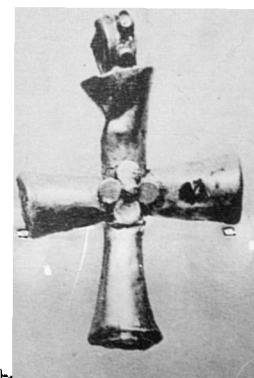


Fig. 404

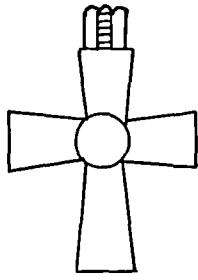


Fig. 405



Fig. 406



Fig. 407



Fig. 408



Fig. 409

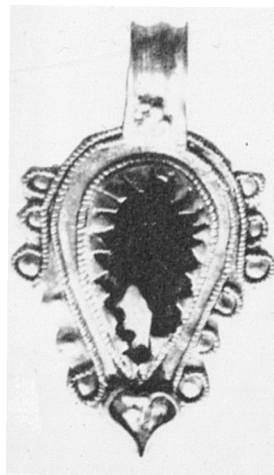


Fig. 410



Fig. 411



Fig. 412

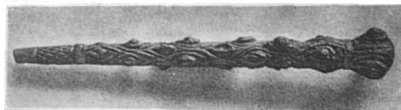


Fig. 413

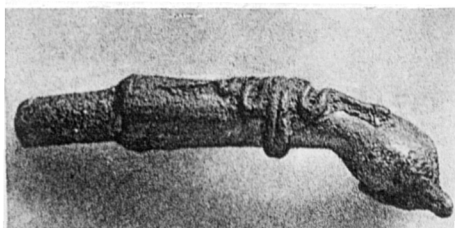


Fig. 414

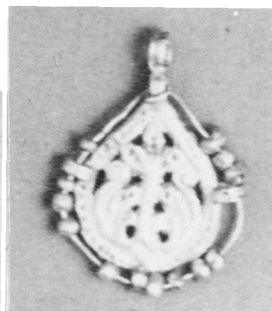


Fig. 415



Fig. 416

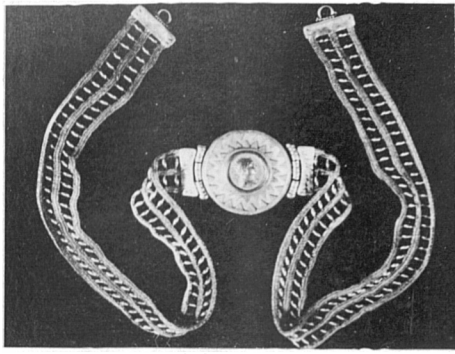


Fig. 417a



Fig. 417 detail

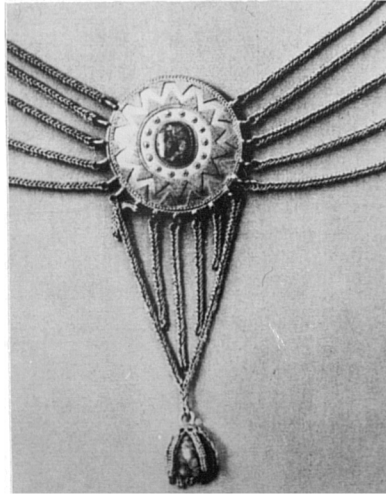


Fig. 418a

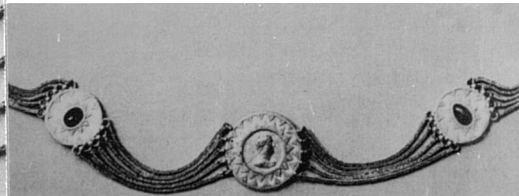


Fig. 418b

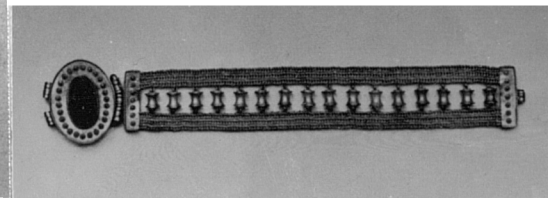


Fig. 418c

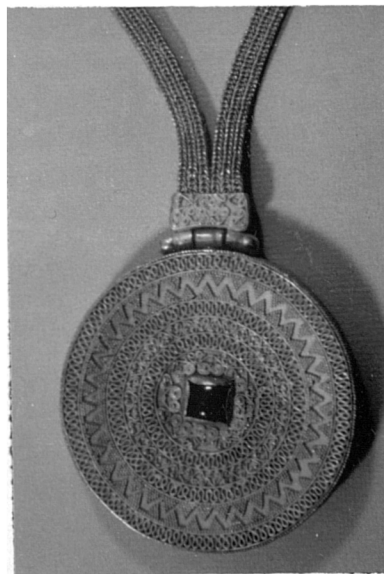


Fig. 419a

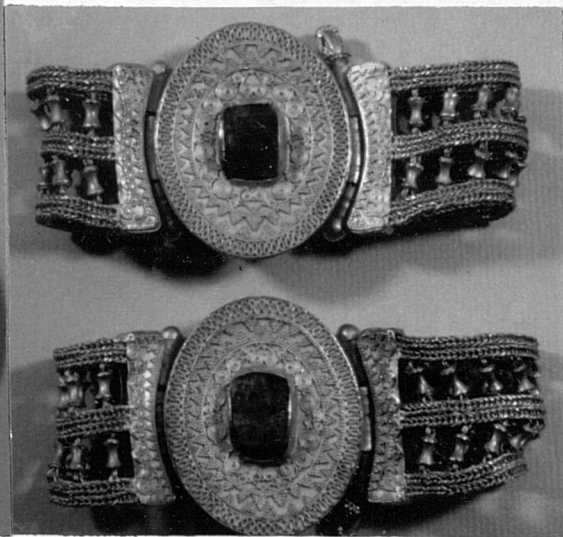


Fig. 419b



Fig. 419c

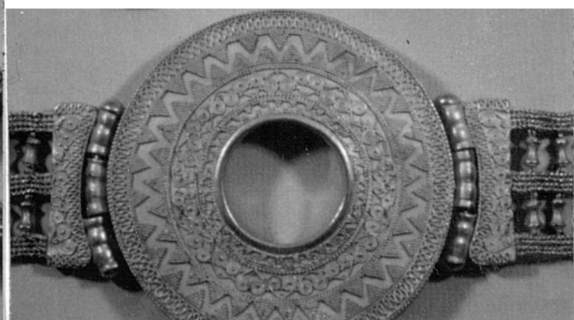


Fig. 419c



Fig. 420

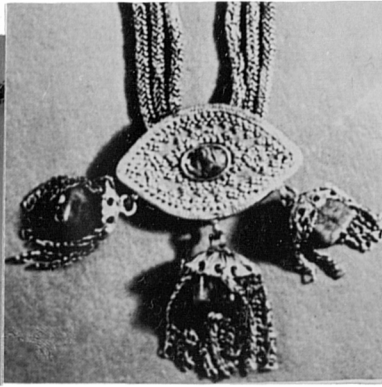


Fig. 421a

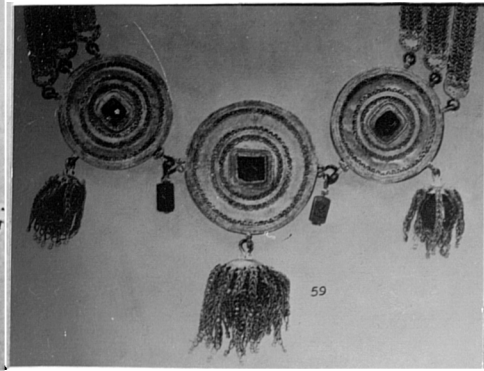


Fig. 421b



Fig. 422



Fig. 423



Fig. 424



Fig. 426

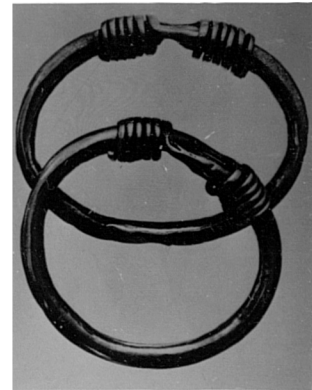


Fig. 427



Fig. 425



Fig. 428



Fig. 429



Fig. 430

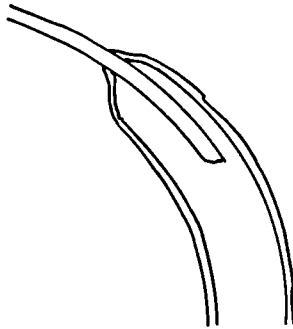


Fig. 431

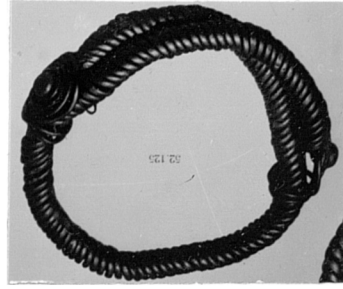


Fig. 432

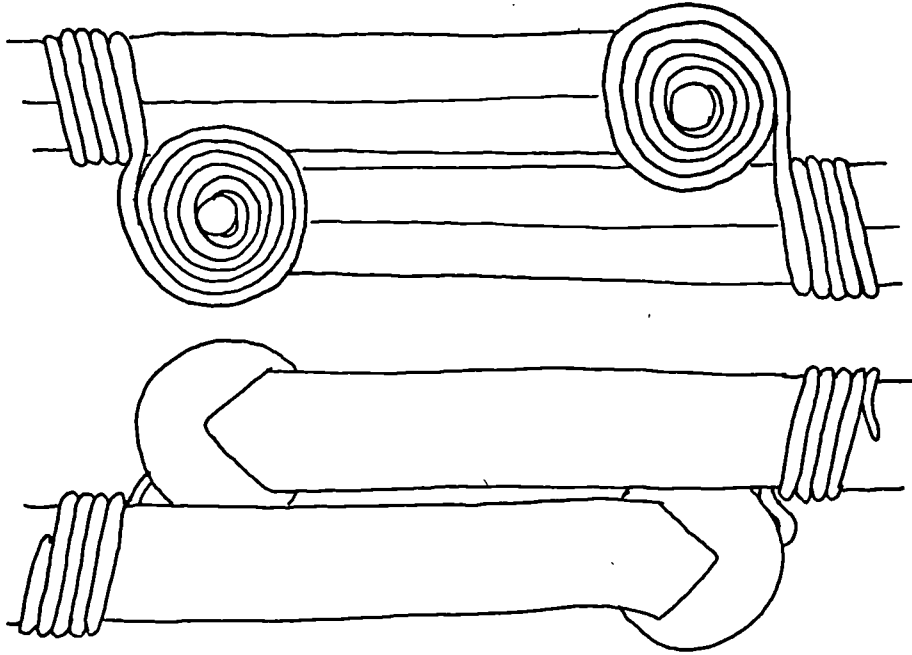


Fig. 433

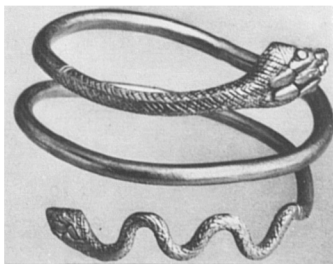


Fig. 434

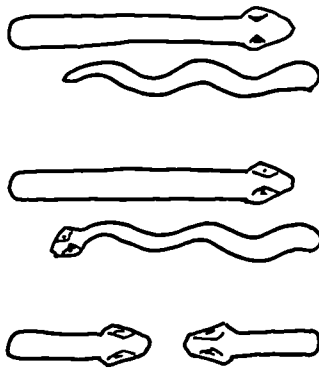


Fig. 435



Fig. 436

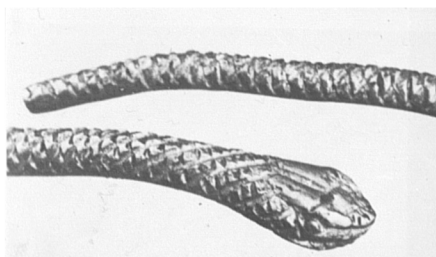


Fig. 437



Fig. 438

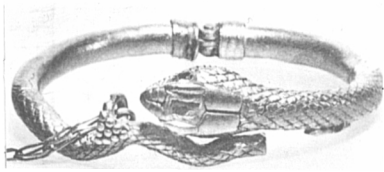


Fig. 439

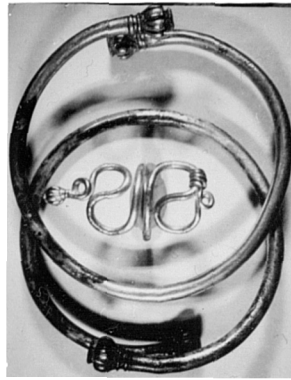


Fig. 440

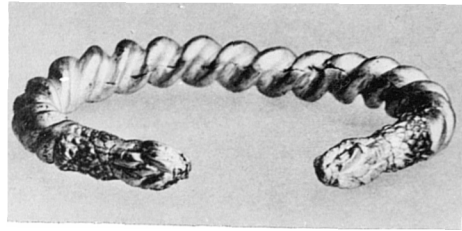


Fig. 441

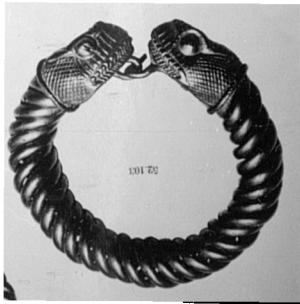


Fig. 442



Fig. 443

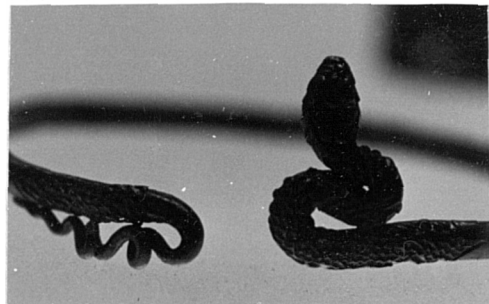


Fig. 444



Fig. 445



Fig. 446



Fig. 447a



Fig. 447b



Fig. 448



Fig. 449



Fig. 450

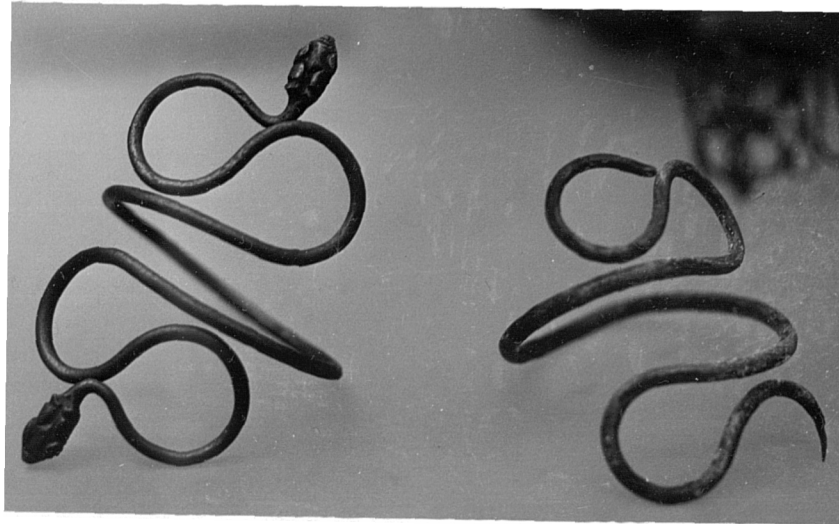


Fig. 451



Fig. 452



Fig. 453



Fig. 454



Fig. 455



Fig. 456



Fig. 457

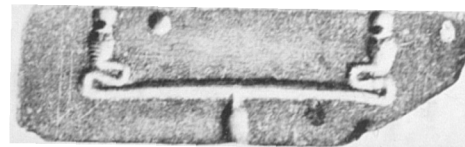


Fig. 458

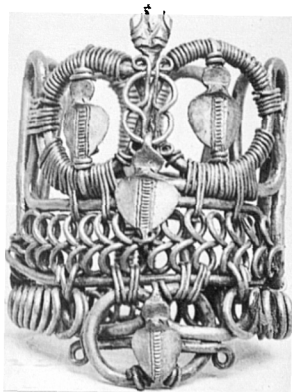


Fig. 459a



Fig. 459b

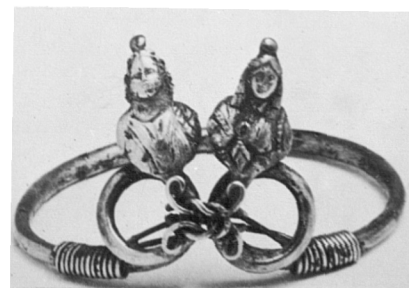


Fig. 460

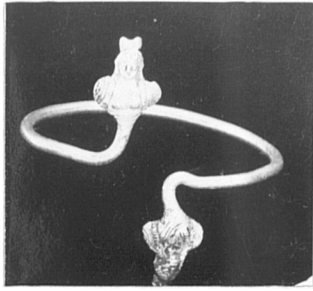


Fig. 461



Fig. 462

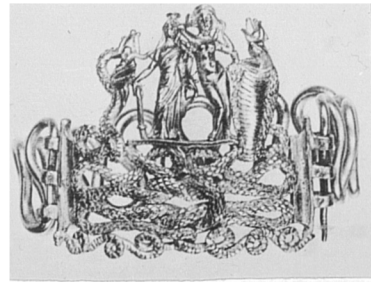


Fig. 463

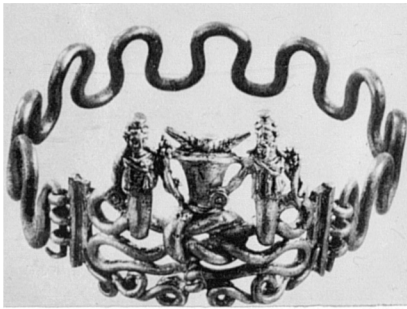


Fig. 464



Fig. 465

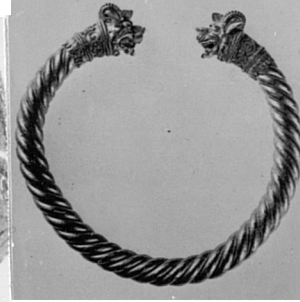


Fig. 466a

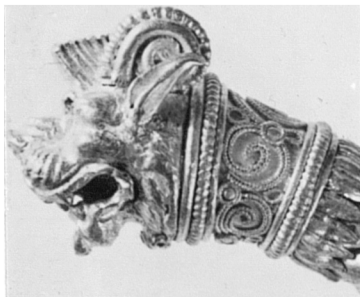


Fig. 466b

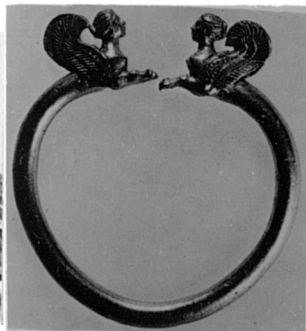


Fig. 467a



Fig. 467b



Fig. 468



Fig. 469



Fig. 470

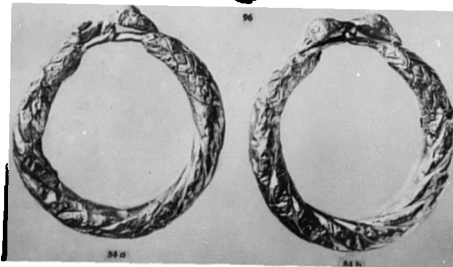


Fig. 471

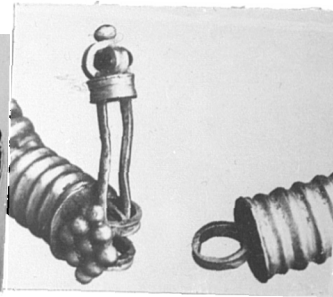


Fig. 472a

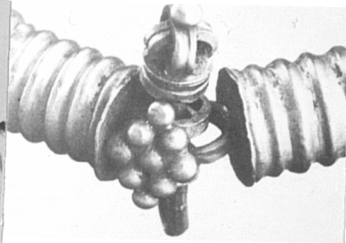


Fig. 472b

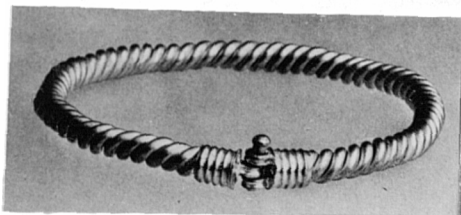


Fig. 473



Fig. 474

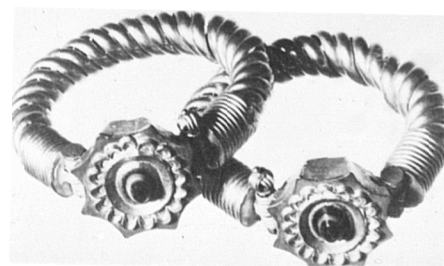


Fig. 475

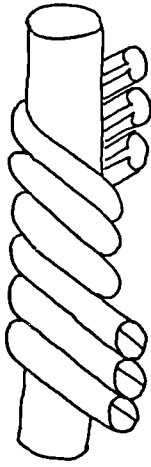


Fig. 476a

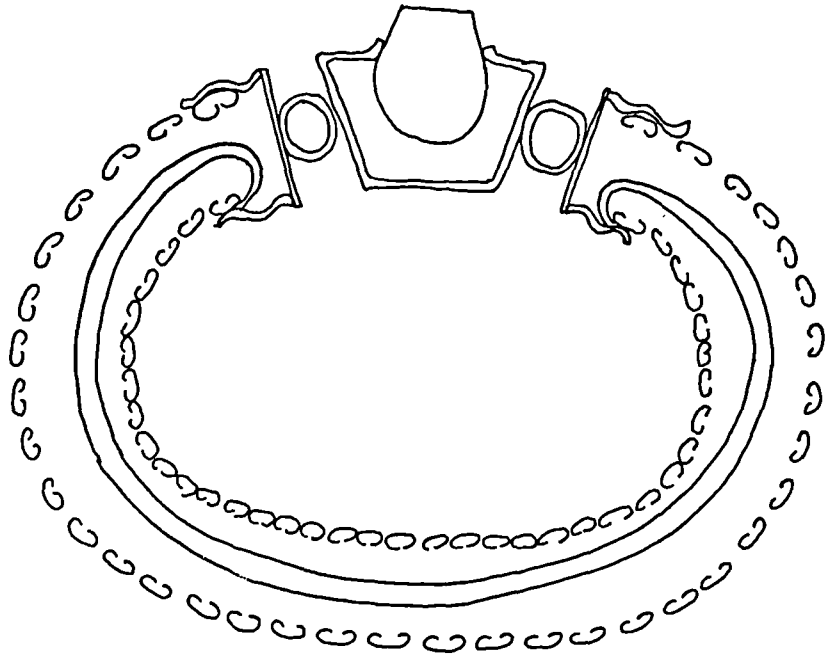


Fig. 476b

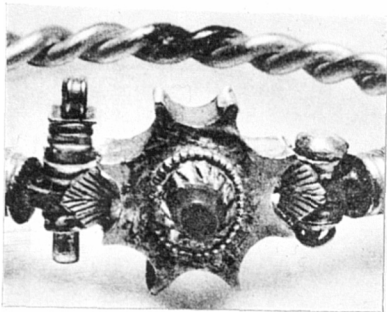


Fig. 477

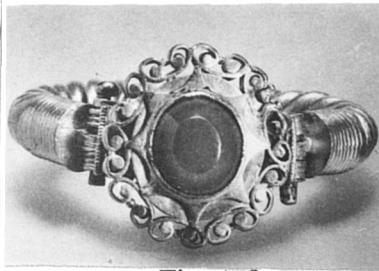


Fig. 478

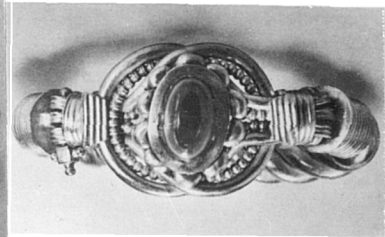


Fig. 479

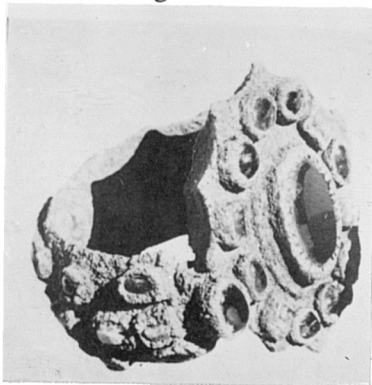


Fig. 480



Fig. 481

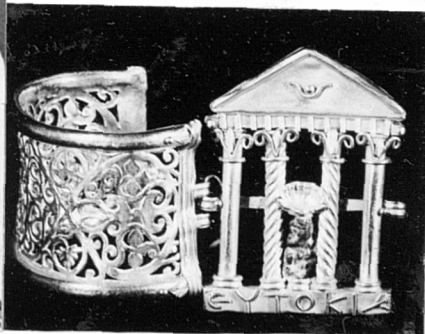


Fig. 482

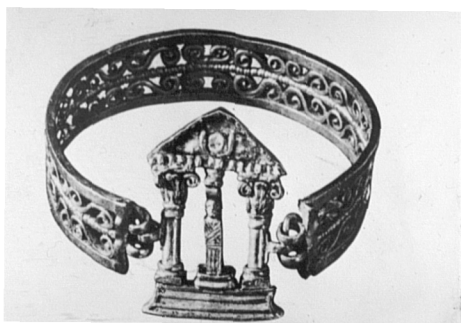


Fig. 483

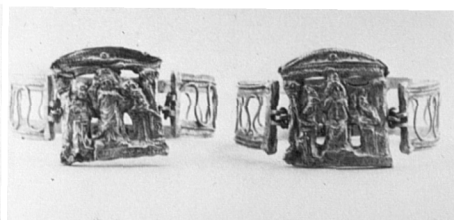


Fig. 484

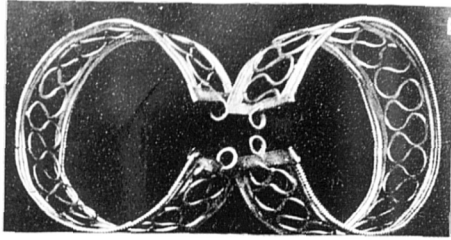


Fig. 485

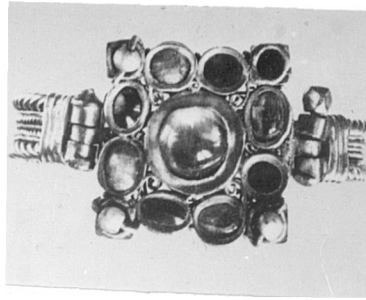


Fig. 486

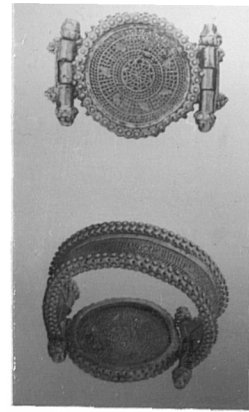


Fig. 487



Fig. 488

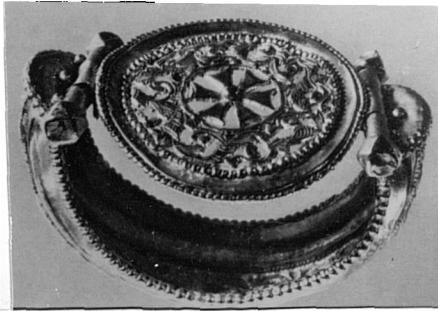


Fig. 489

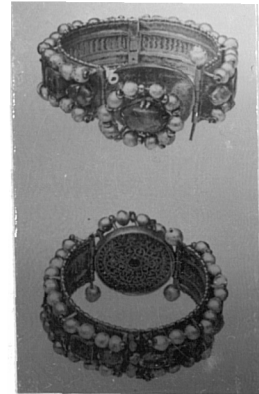


Fig. 490



Fig. 491



Fig. 492

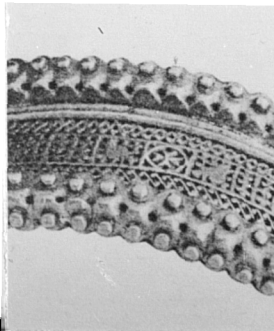


Fig. 493

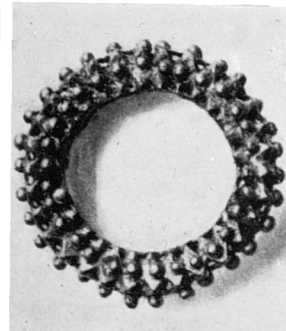


Fig. 494



Fig. 495

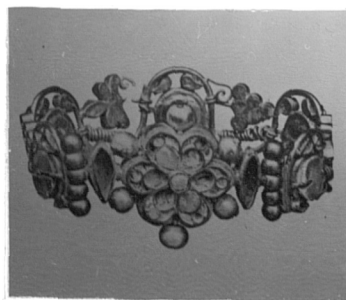


Fig. 496



Fig. 497

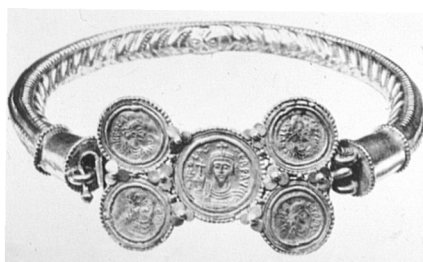


Fig. 498



Fig. 499



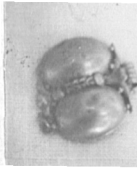


Fig. 500



Fig. 501



Fig. 502a

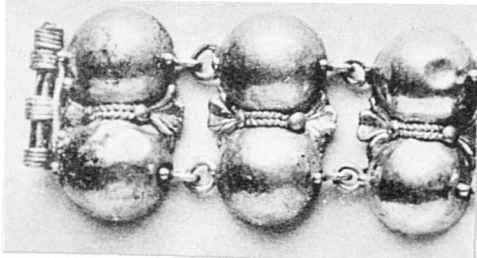


Fig. 502b

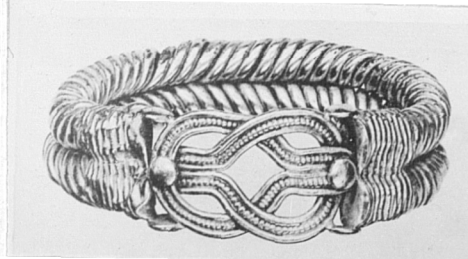


Fig. 503

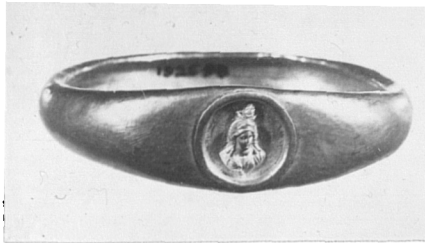


Fig. 504



Fig. 505

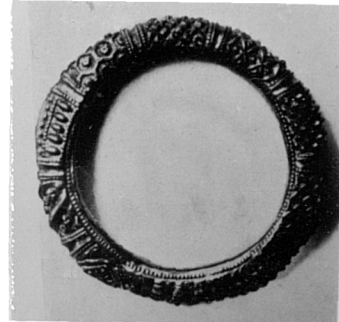


Fig. 506



Fig. 507

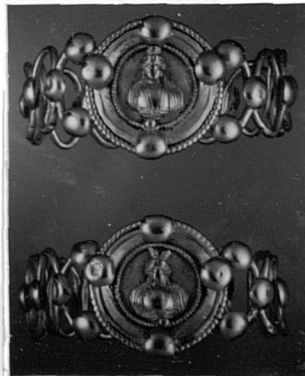


Fig. 508



Fig. 509



Fig. 510

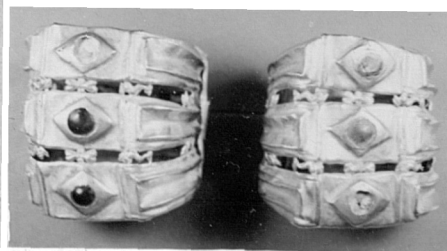


Fig. 511