

Gravitational Waves and Time Domain Astronomy

Joan Centrella¹, Samaya Nissanke² and Roy Williams²

¹NASA Goddard Spaceflight Center, Greenbelt, MD USA
email: Joan.Centrella@nasa.gov

²California Institute of Technology, Pasadena CA USA
email: samaya@tapir.caltech.edu, roy@caltech.edu

Abstract. The gravitational wave window onto the universe will open in roughly five years, when Advanced LIGO and Virgo achieve the first detections of high frequency gravitational waves, most likely coming from compact binary mergers. Electromagnetic follow-up of these triggers, using radio, optical, and high energy telescopes, promises exciting opportunities in multi-messenger time domain astronomy. In the decade, space-based observations of low frequency gravitational waves from massive black hole mergers, and their electromagnetic counterparts, will open up further vistas for discovery. This two-part workshop featured brief presentations and stimulating discussions on the challenges and opportunities presented by gravitational wave astronomy. Highlights from the workshop, with the emphasis on strategies for electromagnetic follow-up, are presented in this report.

Keywords. gravitational waves, compact binaries, time domain astronomy, multi-messenger astronomy

1. New Cosmic Messengers

Gravitational waves (GWs) are a new type of cosmic messenger, bringing direct information about the properties and dynamics of sources such as compact object mergers and stellar collapse. The observable GW spectrum spans over 18 orders of magnitude in frequency, ranging from phenomena generated in the earliest moments of the Universe to vibrations of stellar-mass black holes (BHs).

For time domain astronomy, two GW frequency bands stand out as being especially promising. The high frequency band, $\sim(1 - 10^4)$ Hz, will be opened by ground-based interferometric detectors starting around mid-decade. The strongest sources in this band are expected to be the mergers of stellar-mass compact objects, primarily BH binaries, neutron star (NS) binaries, and BH-NS binaries in the local universe out to \sim several hundred Mpc. The low frequency band, $\sim(10^{-4} - 10^{-1})$ Hz, will be opened by space-based detectors in the 2020s. Merging massive black hole (MBH) binaries, with masses in the range $\sim(10^3 - 10^7) M_{\odot}$, detectable out to high redshifts $z > 10$, are expected to be the strongest sources here and the ones of greatest interest to time domain astronomy. Other sources include inspirals of compact objects into central MBHs in galaxies and compact stellar binaries with periods of tens of minutes to hours[†].

The GWs emitted by binaries typically evolve upwards in frequency with time. When the binary components are well-separated and spiraling together due to GW emission,

[†] The very low frequency band, $\sim(10^{-9} - 10^{-6})$ Hz, will be opened by pulsar timing arrays later this decade. The most likely sources in this region are binaries containing MBHs of $\sim 10^9 M_{\odot}$.

the waveform is a sinusoid increasing in frequency and amplitude, also called a chirp. The final merger, in which the binary components coalesce, produces a burst of radiation; this is followed by a ringdown phase in which the merged remnant typically settles down to an equilibrium configuration. The timescales for these phases depend primarily on the masses of the binary components. For compact remnants, the inspiral might be detectable for about a minute, while the merger and ringdown occur on timescales of roughly a few to tens of milliseconds. The detailed nature of the merging objects, for example moduli of the neutron star crust, is revealed in these last few milliseconds. For MBH binaries, space-based detectors typically will be able to observe the inspiral for several months. The ensuing merger and ringdown then occur over minutes to hours.

The possibility of electromagnetic (EM) counterparts of these GW sources raises exciting prospects for multi-messenger astronomy in the time domain. An EM counterpart greatly boosts confidence in a GW detection [Kochanek & Piran(1993)]. EM counterparts may be a precursor, possibly associated with the binary inspiral; a flash, triggered during the merger and/or ringdown phases; or an afterglow. The timescales for these signals depend on emissions from gas in the vicinity of the binary and can vary widely depending on the type of EM emission produced. Afterglows in particular can be very long-lived.

The opportunities for GW-EM multi-messenger time domain astronomy generated lively and fruitful discussions during a two-session workshop at the symposium. This report presents the highlights from the workshop.

2. High Frequency Gravitational Waves: Getting Ready for Detection

The GW window onto the universe is expected to open around the middle of this decade, when the GW signals from compact binaries are first detected by ground-based interferometers with kilometer-scale arms. These first detections will mark the culmination of decades of development by hundreds of scientists world-wide, and will inaugurate a new era in GW astronomy. This section begins with a status report on these efforts, and then highlights important questions and challenges for this new era in multi-messenger time domain astronomy.

2.1. Status Update

Currently there are three full-scale ground-based interferometric observatories: LIGO runs the 4-km observatories located in Hanford, Washington and Livingston, Louisiana, and the 3-km French-Italian Virgo detector located near Pisa, Italy. Both LIGO and Virgo were planned to be developed in stages. The initial detectors would be full-scale interferometers able to detect rare (nearby) events; the advanced detectors would be about a factor of 10 more sensitive, able to make multiple detections per year and be true observational tools.

LIGO and Virgo have successfully reached their initial design sensitivities, completing several science data-taking runs in 2009-2010. By current astrophysical estimates of stellar-mass mergers, this period of months of observation would have yielded a detection with probability $< 2\%$ [LSC 2010]. Rather than waiting decades for a strong enough signal, LIGO and Virgo are undergoing upgrades to make joint detection rates at least yearly, perhaps weekly. Early science runs with Advanced LIGO/Virgo could start by mid-decade. As of September 2011, Virgo is still operating; the upgrade to Advanced Virgo is expected to follow the Advanced LIGO upgrade by about a year. Construction has also begun in Japan for the Large-Scale Cryogenic Gravitational-wave Telescope

(LCGT, [Kuroda 2010]), an advanced detector that could start operating by the end of this decade. Another advanced detector may also be built in India.

The initial LIGO and Virgo detectors have been used to carry out science runs, deriving upper limits on sources within their observational reach, and to develop data-analysis and detection strategies. An EM follow-up program and a blind-injection test were exercised during the 2009-2010 science runs, providing valuable experience for the advanced detector era, and having particular significance for this workshop. The follow-up program incorporated a prompt search for EM counterparts triggered by GW transients [LSC 2011c]. Candidate GW events and their possible sky locations were identified using a low-latency analysis pipeline. The most promising sky positions for EM imaging were selected using a catalog of nearby galaxies and Milky Way globular clusters. This directional information was sent to partner telescopes around the globe, as well as the Swift gamma ray satellite, (see Figure 1) within ~ 30 min. Nine such events were followed up by at least one telescope [LSC 2011c].

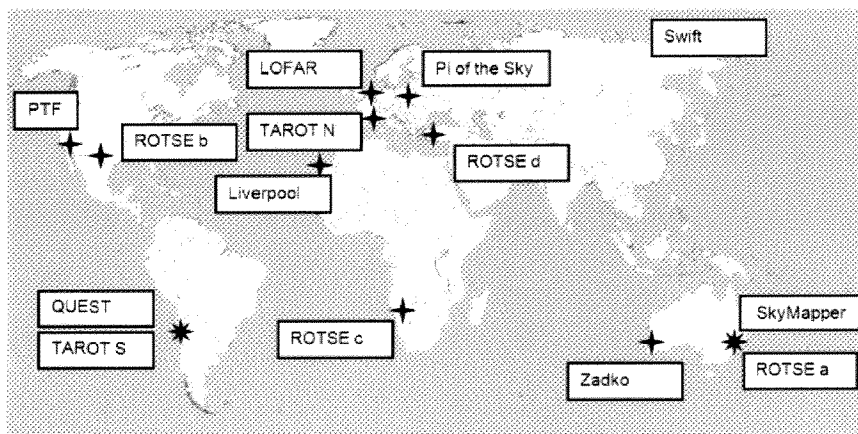


Figure 1. Telescopes that participated in the LIGO-Virgo EM follow-up exercise. Figure from Ref. [LSC 2011c]

A blind injection test was also carried out during September 2010 [LSC 2011a]. In this process, designed to provide a stress-test for the full data analysis pipeline and science procedures, signals were secretly injected into the detector data stream by a small group of analysts. The parameters of these signals were sealed in an envelope, to be opened only after the full collaboration had searched the data and carried out a full exercise of the processes leading from potential detection to approval of a publication. In this case, a strong chirp signal was observed in the data shortly after injection. The data was vetted, sky positions were determined, and the GW trigger information was sent to several EM telescopes. As part of the process, LIGO and Virgo prepared a data release representative of what could be released to the community when the first actual detections are made; see [LSC 2011b].

2.2. Expectations about GW Source Detection

GWs are produced by the dynamical motion of massive objects in spacetime. Since they couple very weakly to matter, GWs are ideal cosmic messengers to bring information from dark hidden regions within galaxies. This section highlights some key expectations gleaned from studies of GW source detection, focusing on compact binary sources.

How many compact binaries are expected to be observed by advanced ground-based GW detectors? Rates for detection by Advanced LIGO and Virgo are estimated using projected detector sensitivities, and compact binary merger rates derived from either the observed sample of galactic binary pulsars or population synthesis results [LSC 2010]. A network comprising three advanced detectors are expected to detect between 0.4 and 400 NS/NS binaries per year, with the most realistic estimate being about 40 per year, out to a distance of ~ 450 Mpc for optimally oriented sources (that is, face-on and located directly above the detector). For stellar BH binaries (with each BH having mass $\sim 10M_{\odot}$), the rates range from 0.2 to 300 detections per year, most realistically ~ 20 per year, out to ~ 2000 Mpc. And for NS-BH binaries (where the BH has a mass $\sim 10M_{\odot}$), the rates range from 0.2 to 300 per year, with the most realistic estimate being ~ 10 per year, out to ~ 900 Mpc. Averaging over the sky and the source orientation reduces these all distance ranges by a factor of about two [Finn 1993].

What properties of these sources can be measured by observing the GWs emitted? GWs carry direct information about their sources. Broadly speaking, applying parameter estimation techniques to analyze the gravitational waveforms yields the binary masses, spins, and orbital elements, as well as extrinsic parameters such as the distance and position on the sky [Cutler 1994]. Eventually it is hoped that the global GW network can elucidate deep secrets of extreme matter, ripped by space itself, through analysis of the merger waveform.

How well can these sources be localized on the sky? GW detectors are all-sky monitors. A single interferometer has a broad antenna pattern and poor directional sensitivity. Comparing the time of arrival of the signals in more than one detector allows for localization of the source on the sky. Using the network of three advanced detectors (Virgo plus the two LIGO sites), the source's sky position can be reconstructed to a region of ~ 1 to 100 deg² [e.g. Fairhurst 2011, Wen 2010, Nissanke 2011]. Adding additional interferometers, in particular one located out of the LIGO-Virgo plane such as LIGO India, brings improvements of factors ~ 3 [Schutz 2011]. Note that the search regions are irregularly shaped and can have non-contiguous 'islands' if the signals are near threshold (see Figure 2), as expected for many LIGO-Virgo sources.

What types of information can EM astronomers expect to receive from GW observatories? The advanced detector network will be able to supply the signal time of arrival and sky localization of the source, along with an estimate of the false alarm rate (FAR). For merging compact binaries, the masses and spins of the components along with the inclination and luminosity distance will also be available. Other information may also be released; see [LSC 2011b] and Figure 2 for an example.

When will LIGO publically release rapid alerts for afterglow observers? Rapid release of triggers (\sim minutes) will begin under one of three criteria, according to the LIGO Data Management Plan [Anderson 2011]: after a GW detection has been confirmed and the collaboration agrees to begin the public program; or after a large volume of space-time has been searched by LIGO; or if the detectors have been running for a long time. It is hoped that this release could be as early as 2016. It should be noted, however, that these criteria may be changed in the future and the release date brought forward.

2.3. Observing EM Counterparts: Challenges and Opportunities

Mergers of NS/NS and NS/BH binaries are expected to generate EM radiation in several wavelength bands. Coupling observations of EM radiation and GWs from these sources opens up exciting new avenues for exploration. Since many GW detections may be near threshold, identification of an EM counterpart would provide additional confirmation of

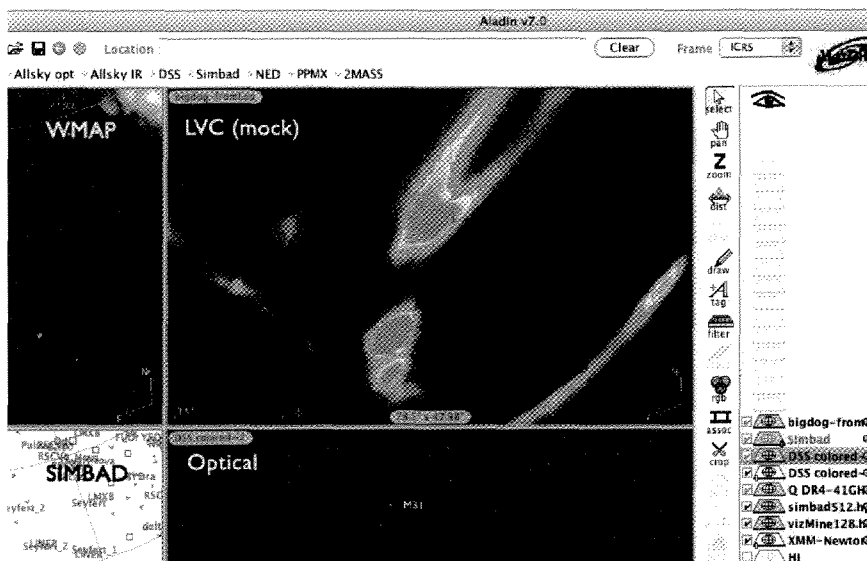


Figure 2. Non-contiguous search islands, illustrated with the Aladin ‘astronomical information system’ [Fernique 2011]. By converting the skymap to Healpix/FITS format, it can be compared directly with other astronomical images and catalogs. The panel ‘LVC (mock)’ corresponds to the skymap released as [LSC 2011b], with at least seven islands visible. Other panels show the same sky with other maps for comparison: left: WMAP data, lower-left: SIMBAD graduated catalog, and right: the Optical sky (DSS), where the galaxy M31 can be seen.

the event. Direct measurements of the binary properties through GW observations will allow testing and deeper understanding of the underlying astrophysical models currently inferred only from EM radiation. This section captures exciting and challenging issues in this arena.

Which astrophysical phenomena generate promising EM counterparts to NS-NS and NS-BH mergers? These mergers are expected to produce collimated jets, observed near the axis as short-duration gamma-ray bursts (SGRBs). Afterglows from interactions of a jet with gas around the burst can be observed in the optical (near the axis, on timescales of hours to days) and radio (isotropically, over weeks to years). A ‘kilonova’ may also be produced from radioactive decay of heavy elements synthesized in the ejecta, yielding weak optical afterglows lasting several days [Li 1998]. Note that SGRBs are rare within the distance observable by Advanced LIGO and Virgo. Thus the isotropic emissions, particularly those from kilonovae, are likely the most promising observable EM counterparts. See [Metzger 2011] for details.

What information will EM astronomers want from the GW observatories? Most astronomers will first want the time and sky location of the event to do the follow-up; information about the binary components and orbits will be valuable for understanding the underlying astrophysics. A smaller group of scientists may also want the gravitational wave time series information. The means of distributing this information is currently being worked out.

Which astronomical instruments will be especially useful in searching for EM counterparts? Satellites such as Swift and Fermi are needed to find GRBs, which we expect to be coincident with GW detections; but only if the axis of the inspiral system points to the Earth (‘beaming’). Other γ /X satellite observatories, current and planned, include MAXI, SVOM, and AstroSat. Rapid follow-up by ground-based optical

telescopes with wide fields of view (such as PTF-2, Pan-STARRS, LSST and others) and radio telescopes (LOFAR, ASKAP, EVLA etc) will search for the afterglows.

Which EM follow-up strategies will produce the best astrophysical results?

In the simplest scenario, all follow-up telescopes operate independently, pointing at the regions identified as having the greatest probability of containing the target. Since the source error regions on the sky from GW events will be relatively large irregularly-shaped regions that may have non-contiguous islands, many EM counterparts, particularly afterglows of relatively short duration, will be missed in this approach. Coordinated EM follow-up, in which many telescopes operate cooperatively to cover the source region, can dramatically increase the odds of imaging an EM counterpart [Singer 2011].

Would it be possible to observe the immediate optical ‘flash’, that is expected within seconds of the merger time? There are all-sky optical monitors in operation and in planning. The ‘Pi Of The Sky’ observatory can locate such a very fast transient in time, to within seconds [Sokolski 2011] to fainter than magnitude 12, and the planned global monitoring system from Los Alamos and LCOGT [Wren 2010] will have the advantage of much higher duty cycle, due to its distributed nature and multiple telescopes at each site.

How early a notice of a GW trigger is useful, and possible? Since early notification increases not only the odds of successfully imaging the counterpart, but also the amount and types of information that will be gained, send the notices as early as possible. For the recent follow-up program carried out by LIGO and Virgo, the notices were sent out within 30 min of detection [LSC 2011c]; efforts are continuing to reduce this latency to 1 minute. Detecting the GW signal during the binary inspiral (before the merger) and releasing this information before the burst occurs is even more interesting and challenging; see [Cannon 2011] for an early study.

Which triggers should be followed up? How low a significance is tolerable?

Nearby strong GW sources should have a low false-alarm rate (FAR) and produce more robust data, including more accurate values for the binary parameters and sky location. But signals near threshold might be more common. The answers to these questions will depend on the actual detection rate.

What more information about the local universe is needed to be ready for the data from Advanced LIGO and Virgo? Two items in particular are needed: a complete publicly-available catalog of nearby galaxies [White 2011, Kulkarni 2009], and an inventory of known transients within the reach of Advanced LIGO and Virgo. It should be noted that for faint transients, it may be that lack of such a catalog, and large numbers, may make it very difficult to pick out a GW afterglow, even if there is a wide, deep, telescope available. By using spatial coincidence with a complete galaxy catalog for those events within 200 Mpc, the number of false-positive transients in a typical GW error box of $\sim 10 \text{ deg}^2$ reduces by three orders of magnitude [Kulkarni 2009].

3. Low Frequency Gravitational Waves: Looking to the Future

The low frequency window contains a wealth of astrophysical sources. Due to noise from fluctuating gravity gradients in the Earth at frequencies below a few Hz, low frequency GWs can only be observed using space-based detectors. The most highly developed proposal is the Laser Interferometer Space Antenna (LISA), which consists of three satellites orbiting the Earth in a triangular configuration with arm lengths $\sim 5 \times 10^6 \text{ km}$ [Jennrich 2009]. Detectors such as LISA will observe coalescing MBH binaries inspiraling over a period of several months, followed by the final merger and ringdown, as well as inspi-

rals of compact objects into central MBHs in galaxies and compact stellar binaries with periods of minutes to hours.

What is the current status of low frequency GW detectors? Due to budgetary problems, ESA and NASA terminated their partnership to develop LISA in the spring of 2011 and both agencies are now looking at lower- cost concepts. On the ESA side, studies are underway for the New Gravitational-wave Observatory (NGO, also known informally as LISA-lite, EuLISA, and eLISA), which is similar to LISA but with shorter arm lengths $\sim 1 \times 10^6$ km. In the US, NASA is also examining concepts for a Space Gravitational-wave Observatory (SGO).

What can be learned from observing low frequency GWs from MBH mergers? For these space-based interferometers, MBH mergers [Sesana 2010] can be observed over a period of several months at relatively high signal-to-noise, allowing precision measurements of the binary properties, plus sky localization to < 100 deg². The expected merger time can be predicted and broadcast weeks or months in advance, providing excellent opportunities for EM follow-up. The rates for MBH mergers are expected to be at least several per year, with the actual values depending on the instrument sensitivity.

What are the prospects for EM counterparts of MBH mergers? MBH mergers are astrophysically rich systems, with a variety of possible EM signals as precursors, flashes, and afterglows [Schnittman 2010]. Since MBH mergers are considered central to our understanding of galaxy and MBH assembly history and demography, and galaxy-MBH co-evolution, the astrophysical payoffs will be significant [Komossa 2003].

4. Summary

The GW window onto the universe will open this decade, when Advanced LIGO and Virgo make the first detections of high frequency GW signals, expected to come from merging compact binaries. Strategies for EM follow-up of the GW triggers are being designed and tested to search for radio, optical, and high energy counterparts. Searches for coincident GW and high-energy neutrinos will be done in coordination with the IceCube project [Bartos 2011]. Coordinated searches, coupled with complete catalogs of galaxies and transients in the local universe, are needed to maximize the science from these multi-messenger studies. In the next decade, space-based interferometers will open the low frequency window with observations of merging MBH binaries. These observations, and their EM counterparts, will provide important information on the evolution of structure and MBHs over cosmic time.

Acknowledgements

It is a pleasure to thank Eric Chassande-Mottin, Ed Daw, Stephen Fairhurst, Jonathan Gair, Mansi Kasliwal, Stefanie Komossa, Brian Metzger, Larry Price, Jeremy Schnittman, Alberto Sesana, and Leo Singer, who delivered excellent short presentations at the GW workshops that stimulated interesting and important discussions.

References

- [Anderson 2011]: Stuart Anderson and Roy Williams. LIGO Data Management Plan <https://dcc.ligo.org/cgi-bin/DocDB/RetrieveFile?docid=9967>
- [Apostolatos 1993]: T. Apostolatos, D. Kennefick, A. Ori and E. Poisson *Phys.Rev.*, D47:5376–5388, 1993.
- [Bartos 2011]: Imre Bartos, Chad Finley, Alessandra Corsi, Szabolcs Marka. Observational Constraints on Multi-messenger Sources of Gravitational Waves and High-energy Neutrinos. <http://arxiv.org/abs/1108.3001>

- [Cannon 2011]: Kipp Cannon, Romain Cariou, Adrian Chapman, Mireia Crispin-Ortuzar, Nickolas Fotopoulos, et al. Toward Early-Warning Detection of Gravitational Waves from Compact Binary Coalescence. 2011.
- [Cutler 1994]: Curt Cutler and Eanna E. Flanagan. Gravitational waves from merging compact binaries: How accurately can one extract the binary’s parameters from the inspiral wave form? *Phys. Rev.*, D49:2658–2697, 1994.
- [Fairhurst:2011]: Steve Fairhurst. *Class. Quantum Grav.*, 28, 105021, 2011.
- [Fernique 2011]: The ALADIN interactive sky atlas: <http://aladin.u-strasbg.fr/>
- [Finn 1993]: Finn, L. S. & Chernoff, D. F. *Phys. Rev. D*, 47:2198, 1993 arXiv:gr-qc/9301003.
- [Harry 2010]: Harry, G. M. et al. *Class. Quant. Grav.*, 27:084006, 2010.
- [Jennrich 2009]: O. Jennrich. LISA technology and instrumentation. *Class. Quant. Grav.*, 26:153001, 2009.
- [Kochanek 1993]: C. S. Kochanek and T. Piran. *Ap. J. Lett.* 417:L17, 1993.
- [Komossa 2003]: Stefanie Komossa. Observational evidence for supermassive black hole binaries. *AIP Conf. Proc.*, 686:161–174, 2003.
- [Kulkarni 2009]: Kulkarni, S. & Kasliwal, M. M. *Proc. RIKEN Symp., Astrophysics with All-Sky X-Ray Observations*, 312 arXiv:0903.0218.
- [Kuroda 2010]: Kuroda, K. & The LCGT Collaboration. *Class. Quant. Grav.*, 27:084004, 2010.
- [Li 1998]: Li, L.-X. and Paczyński, B. Transient Events from Neutron Star Mergers *Ap. J. Lett.* 507:L59, 1998 <http://adsabs.harvard.edu/abs/1998ApJ...507L..59L>
- [LSC 2009]: Abbott, B. P. et al. [LIGO Scientific Collaboration and Virgo Collaboration]. LIGO: the Laser Interferometer Gravitational-Wave Observatory: Reports on Progress in Physics, 72, 076901, 2009.
- [LSC 2010]: J. Abadie et al. [LIGO Scientific Collaboration and Virgo Collaboration]. Predictions for the rates of compact binary coalescences observable by ground-based gravitational-wave detectors. *Class. Quant. Grav.*, 27:173001, 2010.
- [LSC 2011a]: [LIGO Scientific Collaboration and Virgo Collaboration]. “Blind Injection” Stress-tests LIGO and Virgo’s Search for Gravitational Waves <http://www.ligo.org/news/blind-injection.php>
- [LSC 2011b]: [LIGO Scientific Collaboration and Virgo Collaboration]. Mock data release GW100916 *Colloq. ‘Big Dog’* <http://www.ligo.org/science/GW100916/>
- [LSC 2011c]: B.P. Abbott et al. [LIGO Scientific Collaboration and Virgo Collaboration]. Implementation and testing of the first prompt search for electromagnetic counterparts to gravitational wave transients. <http://arxiv.org/abs/1109.3498>
- [Metzger 2011]: Brian D. Metzger and Edo Berger. What is the Most Promising Electromagnetic Counterpart of a Neutron Star Binary Merger? <http://arxiv.org/abs/1108.6056>
- [Nissanke 2011]: Samaya M. Nissanke, Jonathan L. Sievers, Neal Dalal, and Daniel E. Holz. Localizing compact binary inspirals on the sky using ground-based gravitational wave interferometers. *Astrophys. J.*, 739:99, 2011.
- [Schnittman 2010]: Jeremy D. Schnittman. Electromagnetic Counterparts to Black Hole Mergers. *Class. Quant. Grav.*, 28:094021, 2011.
- [Schutz 2011]: Schutz, B. F. *Class. Quant. Grav.*, 28:125023, 2011.
- [Sesana 2010]: Alberto Sesana, Jonathan Gair, Emanuele Berti, and Marta Volonteri. Reconstructing the massive black hole cosmic history through gravitational waves. *Phys. Rev.*, D83:044036, 2011.
- [Singer 2011]: Leo Singer, Larry Price, Antony Speranza. Coordination is key to imaging the earliest optical counterparts of GW events <https://dcc.ligo.org/cgi-bin/DocDB/ShowDocument?docid=G1100983>
- [Sokolski 2011]: Pi of the sky. <http://grb.fuw.edu.pl/>
- [Wen 2010]: L. Wen and Y. Chen. *Phys. Rev.*, D81:082001, 2010.
- [White 2011]: Darren J. White, E. J. Daw, V. S. Dhillon A List of Galaxies for Gravitational Wave Searches *Class. Quant. Grav.*, 28:085016, 2011.
- [Wren 2010]: James Wren; W. Thomas Vestrand; Przemek Wozniak; Heath Davis. A portable observatory for persistent monitoring of the night sky. *SPIE Proc.*, 7737:773723, 2010.