

# Lessons Learned from the Design, Certification, and Operation of the Space Shuttle Integrated Main Propulsion System (IMPS)

Hugo E. Martinez<sup>1</sup> and John D. Albright<sup>2</sup>  
NASA/Johnson Space Center, Houston, TX 77058

Stephen J. D'Amico<sup>3</sup>  
NASA/Johnson Space Center, Houston, TX 77058

John M. Brewer<sup>4</sup>  
NASA/Johnson Space Center, Houston, TX 77058

and

John C. Melcher IV<sup>5</sup>  
NASA/Johnson Space Center, Houston, TX 77058

**The Space Shuttle Integrated Main Propulsion System (IMPS) consists of the External Tank (ET), Orbiter Main Propulsion System (MPS), and Space Shuttle Main Engines (SSMEs). The IMPS is tasked with the storage, conditioning, distribution, and combustion of cryogenic liquid hydrogen (LH2) and liquid oxygen (LO2) propellants to provide first and second stage thrust for achieving orbital velocity. The design, certification, and operation of the associated IMPS hardware have produced many lessons learned over the course of the Space Shuttle Program (SSP). A subset of these items will be discussed in this paper for consideration when designing, building, and operating future spacecraft propulsion systems. This paper will focus on lessons learned related to Orbiter MPS and is the first of a planned series to address the subject matter.**

## I. Introduction

The Space Shuttle Integrated Main Propulsion System (IMPS) consists of the External Tank (ET), Orbiter Main Propulsion System (MPS), and Space Shuttle Main Engines (SSMEs). Extensive Ground Support Equipment (GSE) also exists to service, monitor, and maintain these elements. Overall, the IMPS is tasked with storage, conditioning, distribution, and combustion of cryogenic liquid hydrogen (LH2) and liquid oxygen (LO2) propellants to provide first and second stage thrust for achieving orbital velocity. An overview of the Orbiter MPS portion of the IMPS is shown in Figure 1. As indicated in this figure, nearly all of the MPS hardware is located in the Orbiter aft compartment. This includes the LH2 system, LO2 system, gaseous hydrogen (GH2) system, gaseous oxygen (GO2) system, gaseous helium (GHe) system, gaseous nitrogen (GN2) system, and other miscellaneous items. A functional description and schematics of the MPS hardware are shown in Table 1 and Figures 2 through 4, respectively.

<sup>1</sup> NASA Subsystem Engineer (NSE) for Space Shuttle Orbiter Main Propulsion System (MPS), Energy Systems Division, Mail Code EP4, NASA/Johnson Space Center, 2101 NASA Parkway, Houston, TX 77058.

<sup>2</sup> Aerospace Engineer – Liquid Propulsion Systems, Energy Systems Division, Mail Code EP2, NASA/Johnson Space Center, 2101 NASA Parkway, Houston, TX 77058, AIAA Senior Member.

<sup>3</sup> Aerospace Engineer – Liquid Propulsion Systems, Energy Systems Division, Mail Code EP4, NASA/Johnson Space Center, 2101 NASA Parkway, Houston, TX 77058.

<sup>4</sup> Shuttle Propulsion Systems Integration Group (PSIG) Co-Chair, Energy Systems Division, Mail Code EP4, NASA/Johnson Space Center, 2101 NASA Parkway, Houston, TX 77058, AIAA Member.

<sup>5</sup> Aerospace Engineer – Liquid Propulsion Systems, Energy Systems Division, Mail Code EP4, NASA/Johnson Space Center, 2101 NASA Parkway, Houston, TX 77058. AIAA Senior Member.

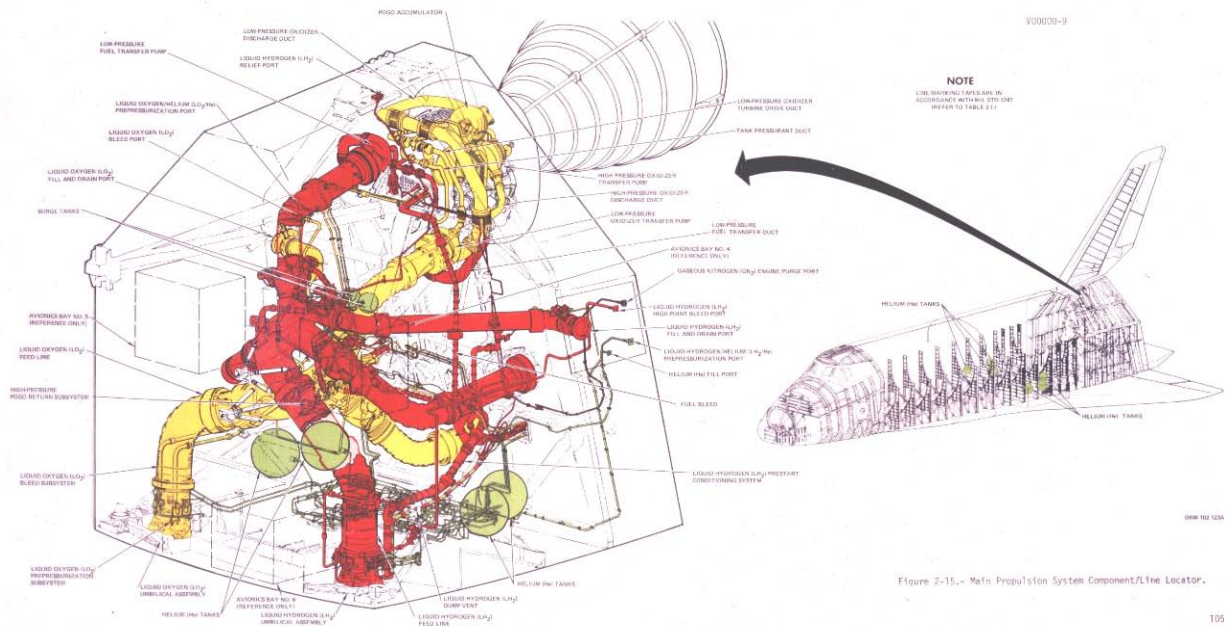


Figure 2-15.- Main Propulsion System Component/Line Locator.

**Figure 1: Orbiter MPS Hardware Located in the Orbiter Aft Compartment (LH2 in Red, LO2 in Yellow)**

**Table 1: Summary of Orbiter MPS Hardware**

Item	Basic Function	Approximate Hardware Dry Weight (lbm)
LH2 System	Pre-launch ET loading and propellant recirculation/conditioning, ascent propellant feed to SSMEs, and on-orbit propellant dump/vacuum inert for system safing	2850
LO2 System	Pre-launch ET loading and propellant bleed/conditioning, ascent propellant feed to SSMEs, and on-orbit propellant dump/vacuum inert for system safing	2450
GH2 System	Pre-launch GHe pre-pressurization and ascent GH2 re-pressurization of ET ullage with GH2 from SSMEs via 3 active flow control valves (FCVs)	100
GO2 System	Pre-launch GHe pre-pressurization and ascent GO2 re-pressurization of ET ullage with GO2 from SSMEs via 3 fixed-orifice FCVs	80
GHe System	Pre-launch, ascent, and shutdown purging of SSME preburners and seals, backup pneumatic actuation for select SSME cryogenic propellant valves, entry repressurization/purging of MPS lines/manifolds and other Orbiter compartments, and primary pneumatic actuation of all MPS cryogenic propellant valves	1950
GN2 System	Pre-launch SSME LO2 dome purge using ground supplied GN2	15
Miscellaneous	Point sensor box for ET propellant level sensors and engine cutoff (ECO) sensors, ullage pressure signal conditioner (UPSC) for control of GO2/GH2 FCVs, dome heat shields for SSMEs, etc.	675
<b>Total MPS Hardware Dry Weight =</b>		<b>8120</b>

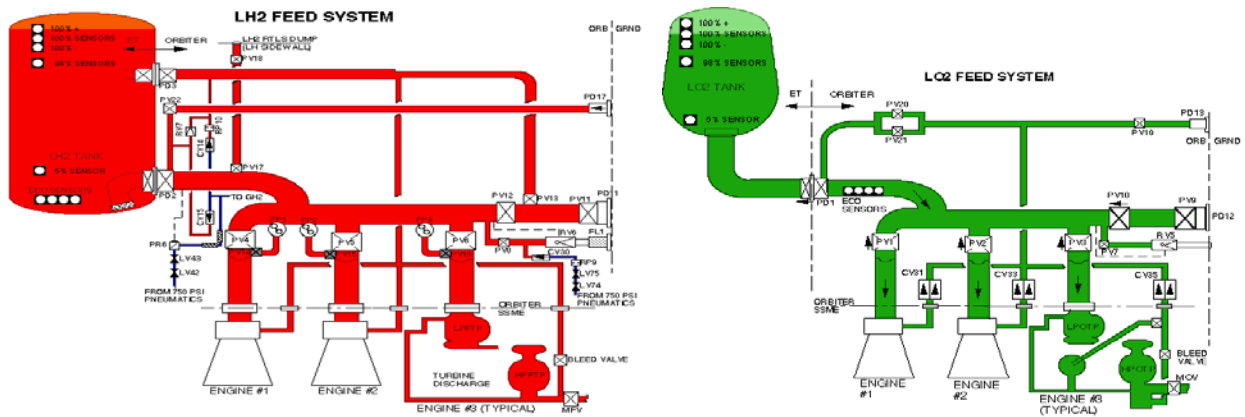


Figure 2: LH2 and LO2 Systems

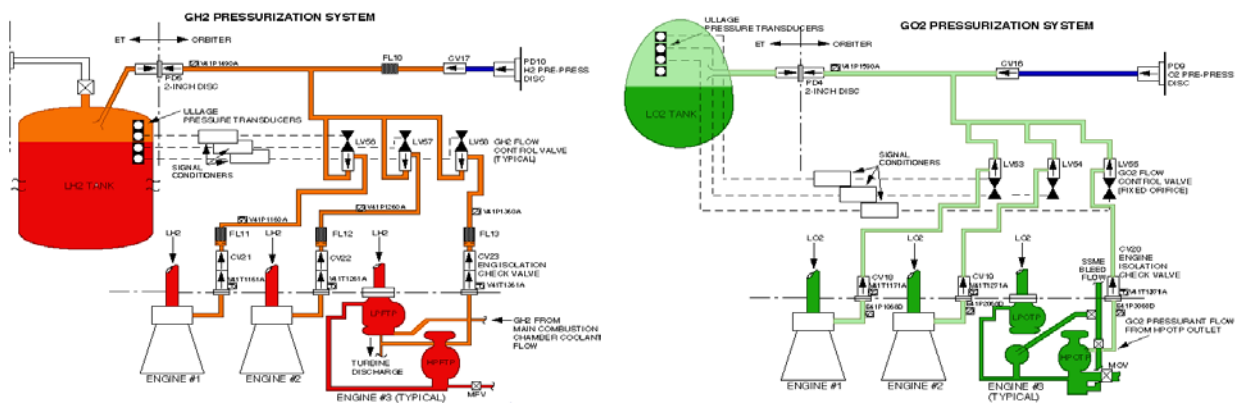


Figure 3: GH2 and GO2 Systems

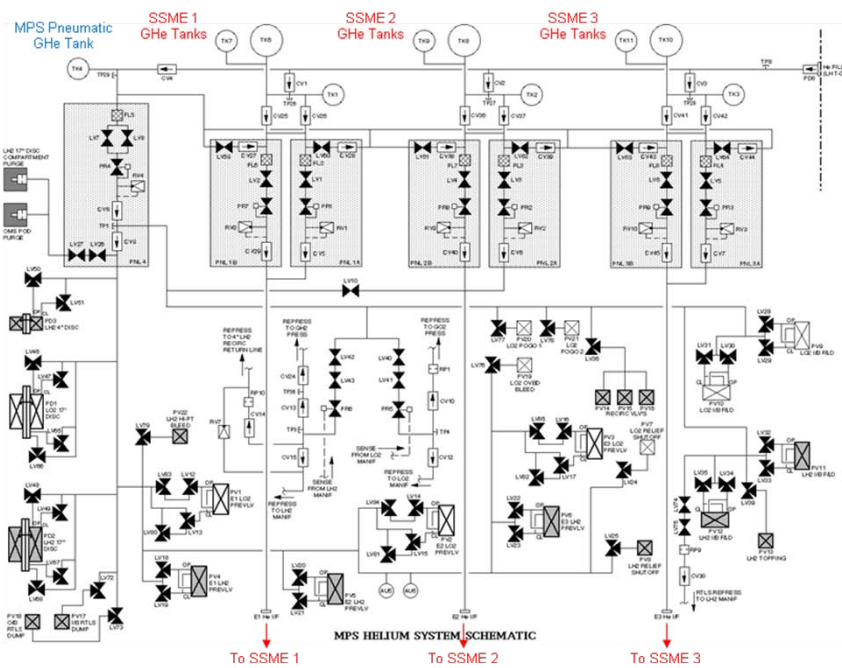


Figure 4: GHe System

The Space Shuttle Program (SSP) can be divided into distinct eras marked by the following key milestones: start of detailed design and certification (July 1972), first flight (STS-1, April 1981), Challenger Accident (STS-51L, January 1986), Return to Flight following Challenger (STS-26, September 1988), first flight of Endeavour as the Challenger replacement vehicle (STS-49, May 1992), Columbia Accident (February 2003), Return to Flight following Columbia (STS-114, July 2005), and final flight (STS-135, currently planned for July 2011). Throughout these eras, the design, certification, and operation of the Orbiter MPS have produced many propulsion-related lessons learned. As the SSP comes to a close, an attempt is being made to document these lessons learned and group them into a variety of common categories, as listed in Table 2, for future reference and use. Since a given lesson could conceivably belong to more than one category, a knowledge capture system has been established to allow primary, secondary, and tertiary categorizations if applicable. This knowledge base will be available to future NASA designers.

**Table 2: Orbiter MPS Lessons Learned Categories – Highlighted Items are Discussed in this Paper**

Requirements Development	Project/Program Management
Cost/Schedule Estimation	Communication/Chain of Command
<b>Hardware Design (Vehicle/System/Component)</b>	Structural/Thermal/Flow Analysis
Analysis/Simulation (Vehicle/System/Component)	Failure Modes and Effects Analysis/Critical Items List
Manufacturing/Assembly/Inspection	Hazard Report Generation
Component Development/Qualification Testing	Reliability Analysis/Assessment
Component Acceptance Testing	Natural/Induced Environments Definition
Integrated System Development/Qualification Testing	Materials and Processes (M&P)
Integrated System Checkout/Acceptance Testing	Component/System Cleanliness
<b>Hardware Certification (Vehicle/System/Component)</b>	Fluid Cleanliness/Chemistry
Ground Operations	Configuration Control
Flight Operations	EEE Parts Selection/Testing
Maintenance/Sustaining Engineering	Problem Reporting/Tracking/Closure
Logistics Supportability	Problem/Anomaly Resolution

It is not the intent to provide an exhaustive treatment of all Orbiter MPS anomalies and resolutions to date, nor to address Agency, program, or project management practices that may have influenced the design, construction, and operation of the Orbiter MPS over time. Instead, the items discussed herein are intended for consideration when designing, building, and operating future spacecraft propulsion systems. Most are equally applicable to single-use or reusable vehicles, although the significance could depend on which type of vehicle is being developed. Some are also very basic in nature, could apply to multiple subsystems/components, and would normally be considered in the context of engineering common sense. However, these principles can sometimes be neglected, either inadvertently or purposely, due to an incomplete understanding of relevant loads/environments, inadequate analysis/testing, inexperienced design/test personnel, or cost/schedule compromises that inevitably accompany spacecraft propulsion system development.

Lessons learned from other categories listed above will be discussed in future papers. This first paper provides a summary of select lessons learned related to Orbiter MPS in the categories of hardware design and hardware certification, as highlighted in Table 2, spanning all eras of the SSP. Note that the term ‘hardware’ is used generically and could refer to the entire Orbiter MPS or to a specific subassembly or component within the Orbiter MPS depending on the context.

## II. Hardware Design Lessons Learned

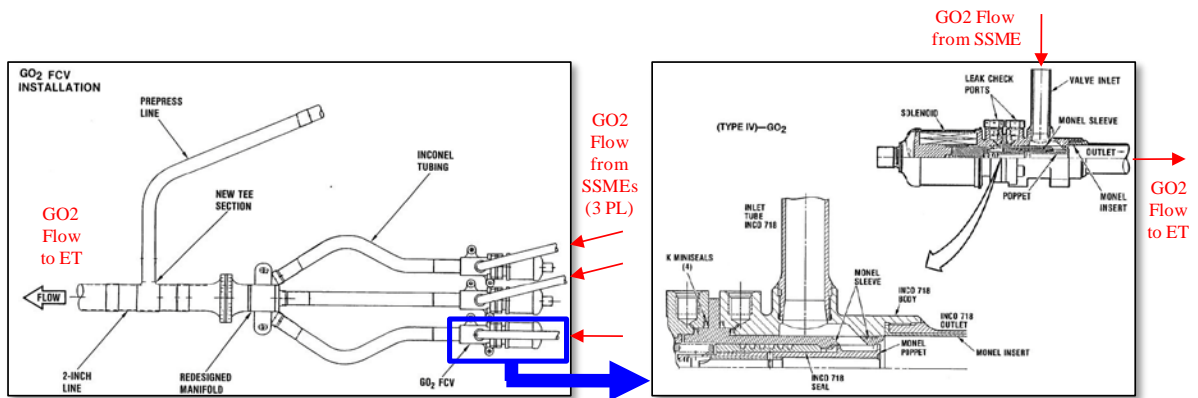
The Space Shuttle was originally developed for a variety of purposes: satellite delivery and retrieval, orbital servicing, round-trip service for science instruments, and laboratory research in space. The Orbiter MPS served a crucial role in enabling these objectives to be met. Based on the system description provided earlier, the Orbiter MPS contains the following types of hardware: tanks/accumulators, lines/manifolds/fittings/seals, flexhoses, valves, pressure regulators, disconnects/couplings, pumps, filters/screens, orifices, sensors/instrumentation (pressure,

temperature, liquid level, hazardous gas, etc.), control avionics, and secondary structure. Design-related lessons learned have been grouped in accordingly, although they are presented in no particular order.

## B. Valves and Regulators

### 1. *Topic: Oxygen Material Compatibility.*

**Discussion/Observation(s):** Early in the SSP, ET ullage pressure control during ascent required independent throttling of three, two-position flow control valves (FCVs) in the Orbiter MPS, each containing an internal bypass orifice in parallel with the main flow path. Warm (350 °F), high pressure (3000 psi) GO<sub>2</sub> tapped from the SSMEs was routed through the FCVs to the ET ullage for this purpose. The FCVs are shown schematically as part of the GO<sub>2</sub> system in Figure 3. Other details of the FCV are shown in Figure 5.



**Figure 5: Orbiter MPS GO<sub>2</sub> FCV Manifold and Valve Cross Section**

The FCV's were subsequently redesigned to eliminate the bypass orifice due to performance problems, and the material of the poppet was changed from stainless steel to Inconel 718 after ignition occurred during aluminum particle impact testing at the NASA White Sands Test Facility (WSTF). The new redesigned FCVs shuttled between a low flow and a high flow position rather than between open and closed, and without the bypass flow path. Subsequent WSTF particle impact testing managed to ignite the Inconel 718 valve, however.

**Problem Resolution(s):** The FCV poppet material was changed to Monel, which was shown by test to be much less sensitive to ignition by aluminum particle impact. In addition, the FCVs were eventually shimmed to a fixed, intermediate position suitable for all ET ullage pressurization in-flight operational and failure scenarios.

**Recommendation(s)/Lesson(s) Learned:** There were many lessons learned as a result of this issue. First, the use of Inconel and Monel was determined to be preferable to stainless steel based on the reduced propensity to ignite upon particle impact. Second, testing should always be performed in a representative GO<sub>2</sub> or LO<sub>2</sub> system. Material transfer and particle generation can cause an oxygen ignition problem, either locally (small particles act as kindling that can ignite) or elsewhere in the system (larger particles can impact downstream components and ignite).

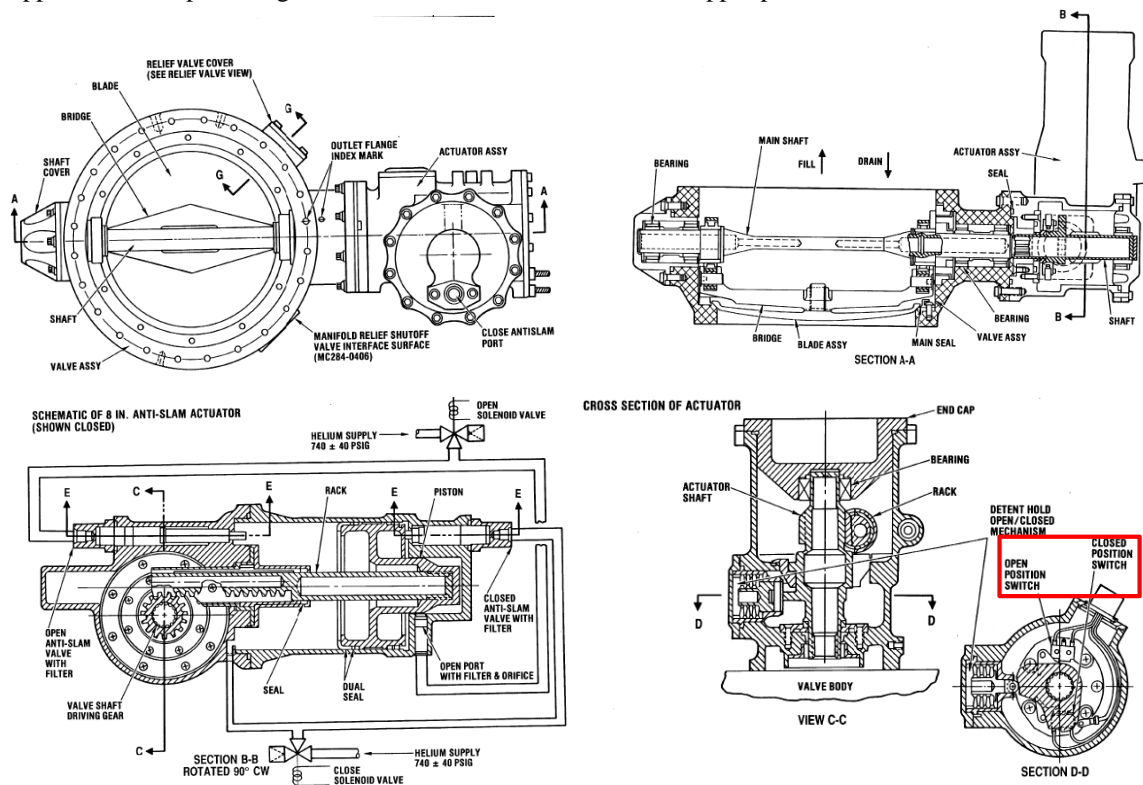
### 2. *Topic: Position Indicator Mounting Location*

**Discussion/Observation(s):** The Orbiter MPS LO<sub>2</sub> and LH<sub>2</sub> systems each contain two fill and drain valves, one inboard and one outboard, as shown schematically in Figure 2. The fill and drain valves are driven by a GHe pneumatic actuator and are used for propellant loading during prelaunch and residual propellant dump/system vacuum inert while on-orbit. The position indicators in these valves, as with several other MPS valves, are mounted in the drive train upstream of the valve element. This can be seen in the valve drawings shown in Figure 6. During vehicle checkout in preparation for launch, a latent defect in the design of the valve actuation mechanism resulted in partial galling of two concentric sliding surfaces and breakage of a shaft key in its keyway. Without the key, the actuator was free to travel and engage its position indicators without driving the valve element to change position. Fortunately, the mechanism seized completely, making the operators realize the valve had not translated fully. The

potential is there, however, for an unrecognized driver galling failure to fool the operators into clearing a failed valve for launch. Other MPS propellant valves share this generic design oversight.

**Problem Resolution(s):** A redesign of the fill and drain valve driver mechanism and position indicator mounting configuration was never undertaken. However, a significant amount of testing was performed on a discrepant valve showing early signs of driver wear/galling to determine how many missions could be performed prior to complete seizure of the drive train. The resulting data became the basis for a high-sensitivity low pressure actuation test (LPAT) performed on all four fill and drain valves prior to every flight to screen for incipient driver galling failures. In addition, the fill and drain valves are preemptively disassembled and inspected for driver wear every 16 flights during interval overhaul sessions.

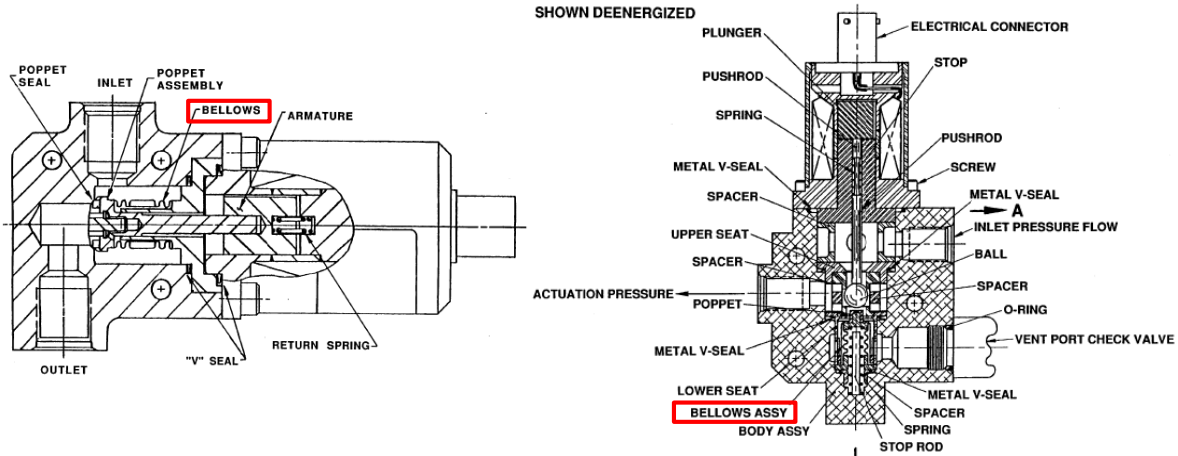
**Recommendation(s)/Lesson(s) Learned:** Valve position indicators should be installed downstream of the propellant valve element rather than upstream at the actuator or in the drive train. This approach was successfully implemented on the 17 inch LO2 and LH2 disconnects, where the flapper position indicator is directly coupled to the flapper drive arm providing actual, not inferred, information on flapper position.



**Figure 6: Orbiter MPS LO2 and LH2 Fill and Drain Valve Details**

### 3. Topic: Bellows Size and Manufacturing Process Control

**Discussion/Observation(s):** Four configurations of two-way solenoid valves and two configurations of three-way solenoid valves are used throughout the Orbiter MPS to control the flow of regulated GHe to the SSMEs and provide pneumatic actuation pressure to the many LO2/LH2 valves and disconnects located throughout the system. These valves are shown schematically in Figure 4. Other details are shown in Figure 7, including the presence of an electroformed bellows within each valve.



**Figure 7: Two-Way Solenoid Valve (Left) and Three-Way Solenoid Valve (Right)**

Sensitivity to the manufacturing process was found during an investigation of squirmed bellows in the two-way and three-way solenoid valves. It was determined that the sub-tier vendor had changed a proprietary electroform nickel-cobalt plating process. Neither the prime contractor nor the valve vendor had adequate visibility into the key parameters associated with this process, including bath composition, plating temperature, bath flow characteristics, electrical charging of plating materials, etc. The change resulted in lot-to-lot variation in material properties and geometry of the bellows convolutes, as well as possible variation of those same characteristics within a given lot.

**Problem Resolution(s):** The corrective action was to test many units and group the delivered bellows into three different lots, one of which was scrapped entirely due to inadequate performance. The earlier and later lots were found to have sufficient ductility to meet life cycle requirements and justify continued use in the valves.

**Recommendation(s)/Lesson(s) Learned:** Small electroformed, edge-welded, or hydroformed bellows offer a way to provide internal sealing and achieve a desired force balance in valves without the weight penalty of strong springs or the wear and imperfect sealing characteristics of dynamic seals. However, these items are sensitive to the manufacturing process, and unrecognized changes in critical process parameters can lead to unacceptable variability and failure, particularly when subjected to a highly dynamic environment. As a result, their use should be minimized and, when they are necessary, the manufacturing process should be carefully documented and controlled.

#### 4. *Topic: Fail-Safe Bellows*

**Discussion/Observation(s):** Seven pressure regulators are used in the Orbiter MPS to provide regulated GHe at 750 psi to the SSMEs and pneumatic actuators on the many LO2/LH2 valves and disconnects located throughout the system. These regulators are shown schematically in Figure 4. All share a common design with an edge-welded bellows used to provide internal sealing and force balance within the regulator. During testing of a GHe regulator at NASA Johnson Space Center (JSC), the bellows developed a fatigue crack resulting in significant internal leakage. The resulting force imbalance led the regulator to fail in a wide open condition. Had this type of failure occurred early in ascent or during certain phases of entry, it would have likely resulted in catastrophic overpressurization of the aft compartment.

**Problem Resolution(s):** The regulator was redesigned to utilize a vented, atmospheric referenced bellows. A simplified cross section of the original and redesigned GHe regulator is shown in Figure 8.

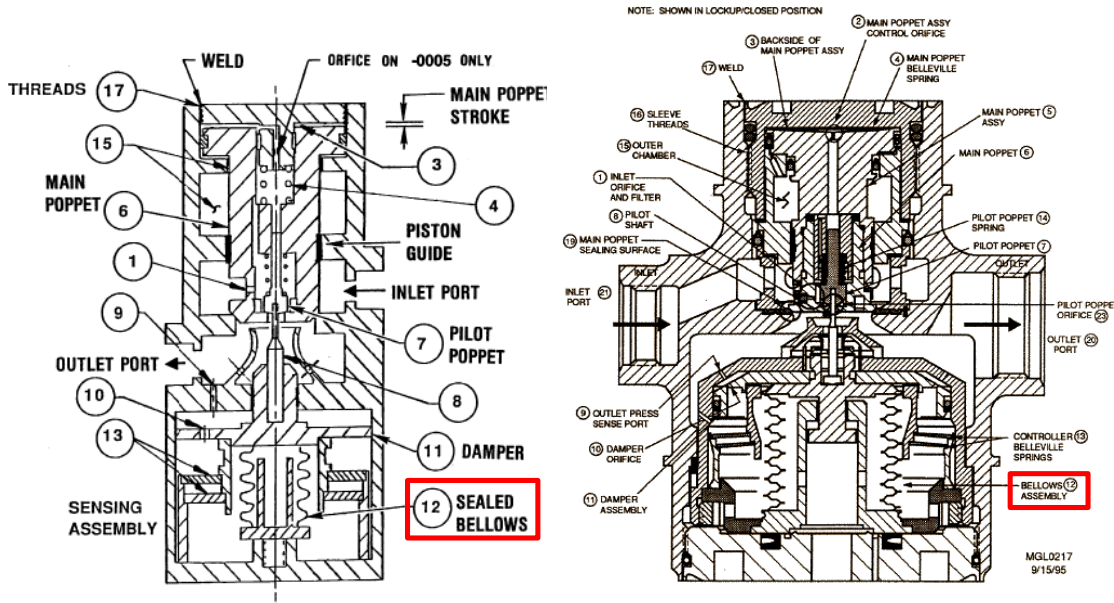


Figure 8: Orbiter MPS 750 psi GHe Regulator, Old Config (Left) and Redesigned Config (Right)

**Recommendation(s)/Lesson(s) Learned:** If bellows must be used in a highly dynamic component or system, a fail-safe mode should be designed-in to avoid an undesirable condition in the event of a bellows failure.

5. **Topic:** GHe Check Valve Poppet Jamming

**Discussion/Observation(s):** Five different configurations of check valves are used in the Orbiter MPS GHe system, accounting for 31 check valves total. Of those, 16 units are located in the high pressure section of the system upstream of the GHe pressure regulators. The high pressure check valves are shown schematically in Figure 4 and a general cross section of that hardware is shown in Figure 9.

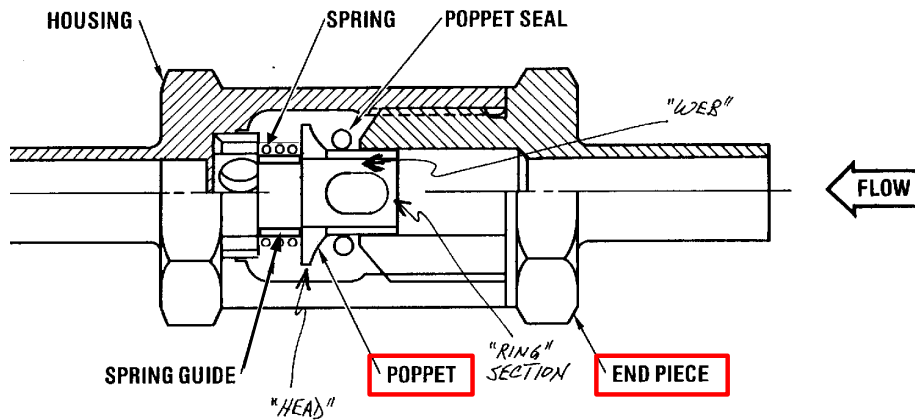


Figure 9: Generic Configuration of GHe Check Valves

During ground testing, a fail open condition occurred on several high pressure check valves, resulting in excessive reverse leakage. Failure analysis efforts, including x-rays of the discrepant check valves prior to disassembly and inspection, revealed significant wear and contamination, but cocking of the poppet within the end piece was determined to be the root cause.

**Problem Resolution(s):** The poppet was redesigned to provide a higher length-to-diameter (L/D) ratio, thus limiting the potential for cocking within the bore of the end piece during rapidly changing GHe flow demands (e.g. GHe regulator slam start). In addition, a new material was chosen for the poppet and end piece. In particular, the



poppet material was changed from 316 stainless steel to a more ductile and lubricious aluminum-bronze alloy to decrease localized friction and the potential for poppet binding/cocking. Finally, an in-flight checkout (i.e. pressure decay test) was added to evaluate reverse leakage of the check valves every flight prior to entry.

**Recommendation(s)/Lesson(s) Learned:** Careful attention should be paid to the L/D ratio, radial clearances, and material selection when designing a sliding interface between valve piece-parts. Also, representative testing, including high flow-demand events and total commodity throughput, should be conducted early to confirm adequacy of the hardware design.

6. **Topic:** *Sharp Edges and Corners on Component Piece-Parts*

**Observation(s):** Many otherwise good component designs are hampered by the existence of sharp edges on sliding piece parts or only slightly broken edges leading to eventual binding/jamming and galling. Drawing callouts are for a maximum radius and “break edge” callouts are sometimes ignored. Excessively sharp corners on internal radii can also be problematic, resulting in significant stress concentration and fatigue cracking in service.

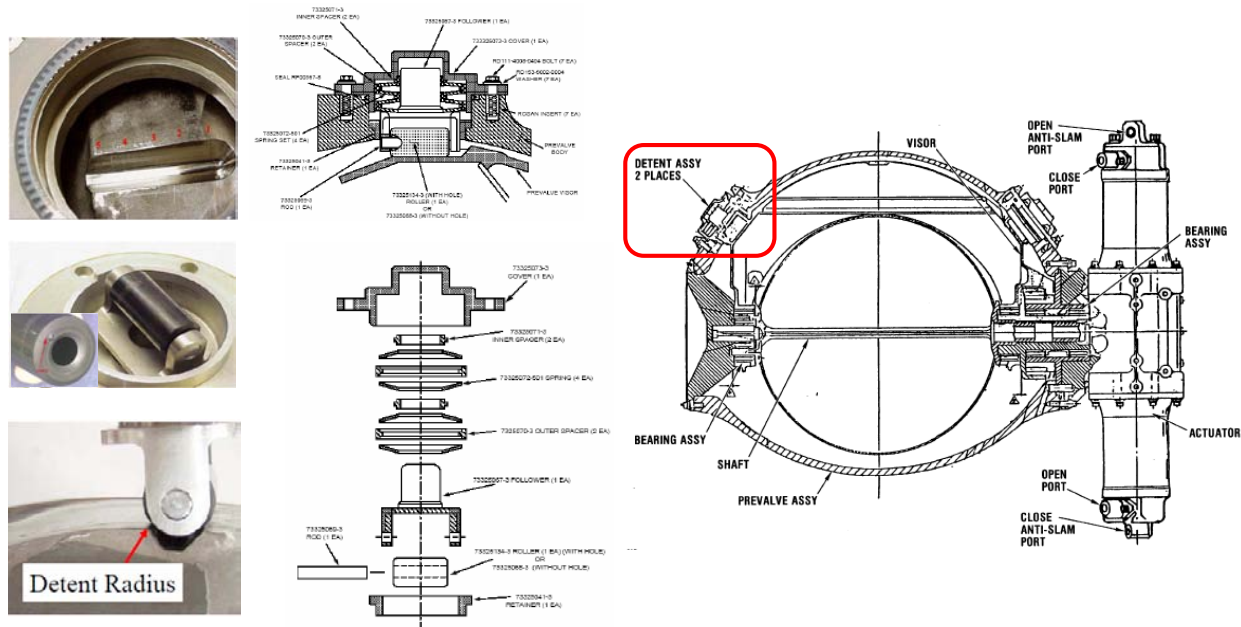
Several notable failures involving a variety of Orbiter MPS hardware shown schematically in Figures 2 through 4 have resulted from these types of circumstances. A stress concentration feature on the LO2 fill and drain valve’s needle bearings caused the tips to break off due to fatigue, leading to failure of the entire bearing assembly and release of debris into the system during Main Propulsion Test Article (MPTA) testing. A sharp edge left at the housing bore undercut on the GHe two-way solenoid valve, combined with a failure to inspect and deburr the undercut machining, resulted in the solenoid plunger catching on this sharp edge and creating more burrs, causing it to bind. Finally, sharp corners in rectangular through-holes on a GHe check valve poppet caused fatigue cracking in service and complete poppet head failure/liberation on a unit being flow tested at NASA JSC.

**Problem Resolution(s):** For the fill and drain valves, the needle bearing assembly was redesigned to eliminate the stress concentration on the bearings and incorporate a locking feature to keep the bearing assembly from coming apart. For the GHe solenoid valve, design and inspection changes to implemented to eliminate detrimental sharp edges. For the GHe check valves, the poppet design was reviewed to ensure a generous radius had been specified and all units in service were inspected to confirm compliance with drawing requirements. Discrepant check valves were eventually replaced with spare units.

**Recommendation(s)/Lesson(s) Learned:** Use generous radii at edges along sliding surfaces, at neck-downs, and on internal corners to prevent binding/jamming and fatigue cracking from localized stress concentration.

7. **Topic:** *Prevalve Detent Roller Cracks*

**Observation(s):** The Orbiter MPS uses six pneumatically actuated cryogenic prevalves, three each in the LO2 and LH2 systems, to control the flow of propellants to the SSMEs. These valves are shown schematically in Figure 2. Due to the criticality of keeping the prevalves open in the highly dynamic environment of ascent, two spring-loaded detent rollers are used on each prevalve to supplement the GHe pneumatic actuation pressure. These cylindrical rollers, made of Vespel SP-21, are pressed into matching grooves in the prevalve visor, made of cast Inconel 718, using a set of Belleville springs. A drawing and several photos of the prevalve hardware are shown in Figure 10.



**Figure 10: Orbiter MPS LO2 and LH2 Prevalve Detent Roller Configuration**

Uneven wear and overload cracks were discovered on several occasions in the same roller location on one of the LO2 prevalues in service. This was accompanied by additional witness marks and wear on other interfacing piece-parts within the detent roller stack. Initially, the investigation focused on a rough cast surface and excessively sharp edge radius on the detent groove in the affected visor. However, the detent roller cracks recurred despite sanding of the contact surface on the visor and blending of the edge radius on the detent groove to meet drawing requirements.

Another focus of the investigation involved a small dimple (i.e. blind hole) that was machined into the end of certain detent rollers. The purpose of this dimple was to provide a positive visual indicator of rollers manufactured from Kel-F material that had been successfully batch tested to confirm LO2/GO2 compatibility. Although this dimple was thought to be located in an area of low stress, the overload cracks initiated and passed through this dimple whenever present. However, one roller cracked without the dimple so it was not considered the root cause.

**Problem Resolution(s):** Periodic inspections were instituted to regularly monitor the integrity of the affected LO2 prevalue detent roller. In addition, all rollers with a dimple were purged from inventory and not permitted to be installed on the prevalues due to the apparent stress concentration effect. Finally, a solid modeling effort and detailed tolerance stackup analysis were performed. This revealed that the drawing tolerances would allow the Belleville spring stack to reach solid height under certain circumstances, thus putting excessive load on the detent roller. Once this possibility was recognized, parts of the affected detent roller stack were replaced by strategically chosen spares to avoid the tolerance stackup issue. Note that the original prevalue design drawings were never updated to change the tolerances that led to the solid height condition because of adequate field performance of the other hardware.

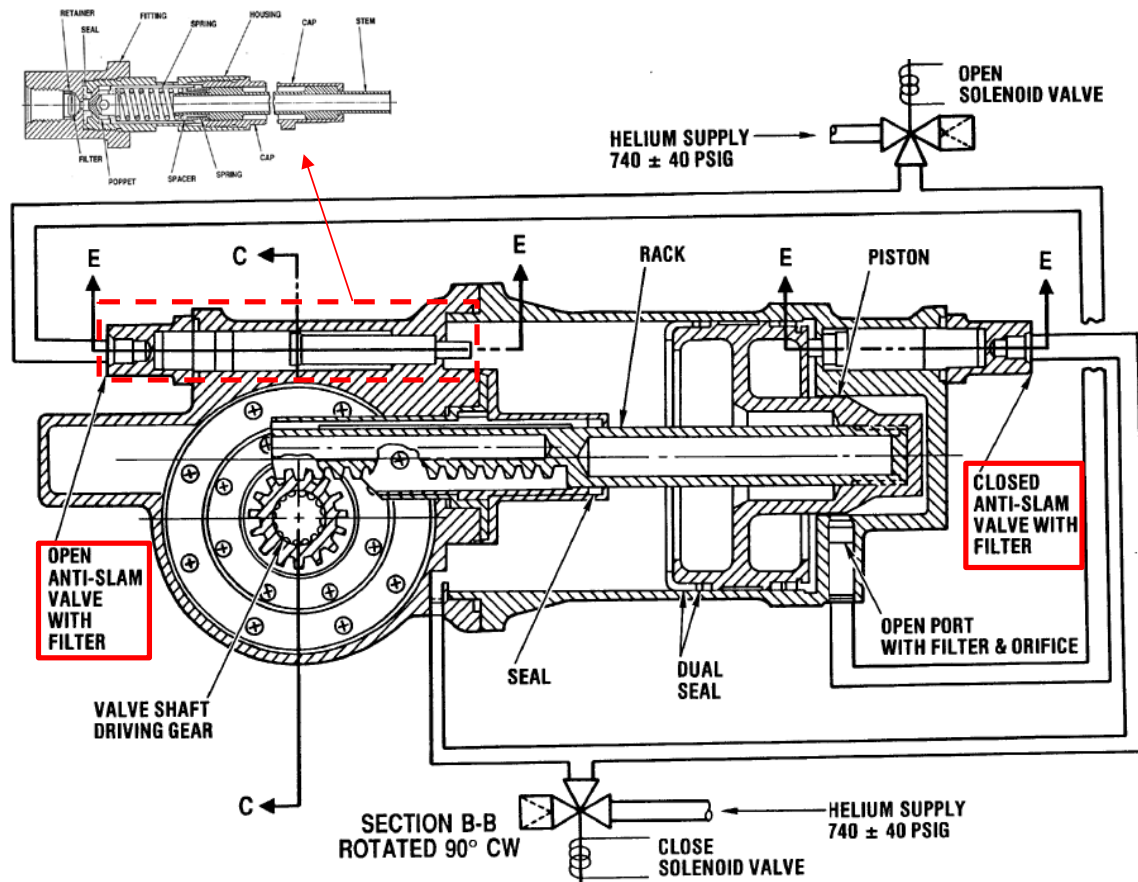
**Recommendation(s)/Lesson(s) Learned:** A thorough tolerance stackup analysis should be conducted on all components containing moving parts to ensure that worst-case tolerances will not cause hardware malfunction or premature wear/failure.

**8. Topic: Design Control Preferred Over Operational Control**

**Discussion/Observation(s):** The LO2 and LH2 prevalue configuration was discussed in the prior section. During LH2 system decay checks on the vehicle, excessive internal leakage caused by a broken main seal was discovered on one of the LH2 prevalues. It was determined that this condition was created by inadvertently slamming the visor open and closed during planned ground checkout. Normally, the valve was operated in a 'snubbed' mode during cycling. This meant that GHe pneumatic pressure was applied to both sides of the actuator piston prior to venting pressure from the back side and allowing the piston to move. In this case, the prescribed operational sequence was not followed, driving the valve mechanism much faster than normal and damaging the main seal against its seat.

**Problem Resolution(s):** In addition to clarifying the operational procedures, a significant hardware modification was made to add open and closed anti-slam valves and plumb pneumatic GHe to the back side of the actuator piston whenever the front side of the actuator piston is pressurized. This was done for both the LH2 and LO2 prevalues (and also the LH2 and LO2 fill and drain valves). Orifices in the anti-slam valves are used to control the flow of GHe to the back side of the piston, while still allowing the LO2 prevalues to meet their critical procurement specification requirement for closure within approximately one second of command at Main Engine Cutoff (MECO). This anti-slam mechanism, shown schematically in Figure 11, is now used in combination with the ‘snubbing’ procedures used previously.

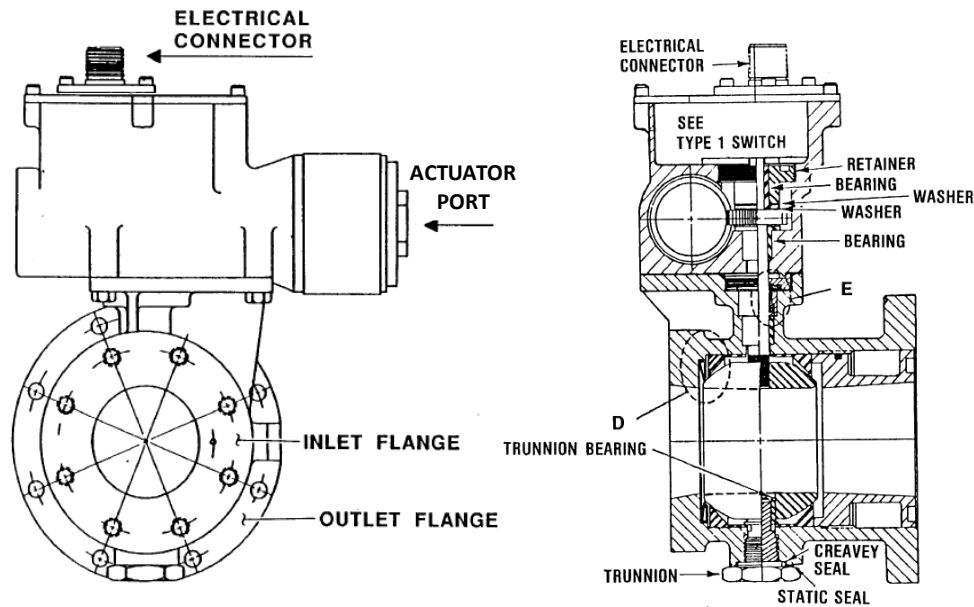
**Recommendation(s)/Lesson(s) Learned:** Designed-in controls are always preferred over operational controls.



**Figure 11: Orbiter MPS LH2 and LO2 Prevalve Actuator with Anti-Slam Mechanism**

9. **Topic:** Porosity in Valve Castings as a Cause of External Leakage

**Discussion/Observation(s):** The Orbiter MPS LO2 and LH2 systems contain five different configurations of pneumatically actuated cryogenic ball valves. These valves are shown schematically in Figure 2 as PV13 through PV22. One of the five configurations is used for the LH2 topping and recirculation pump valves that are exercised during propellant loading/conditioning prior to launch. A diagram of this valve is shown in Figure 12. The LH2 topping valve was removed after vehicle level leak checks found external leakage at one of the flange connections. Examination of the valve flange by the vendor revealed pitting on the sealing surface. Repeated attempts to eliminate the pitting via lapping of the flanges was unsuccessful due to porosity occurring throughout the entire flange depth. All ball valve housings made of cast A356 material were subject to this problem, as faster cooling of the molten material the flange region led to the formation of subsurface bubbles below the machining datum. It was determined that the discrepant unit had passed the acceptance test procedure (ATP) and previous post-installation leak checks because the seal had not landed on a surface pit at that time.



**Figure 12: Orbiter MPS LH2 Topping and Recirculation Pump Valve**

**Problem Resolution(s):** Since the leakage depended on where the interface seal landed on the surface, the only option was to eliminate the porosity. The valve housings were changed to hot isostatic press (HIP) castings. The existing detailed inspection of both flange sealing surfaces was also enhanced in the ATP.

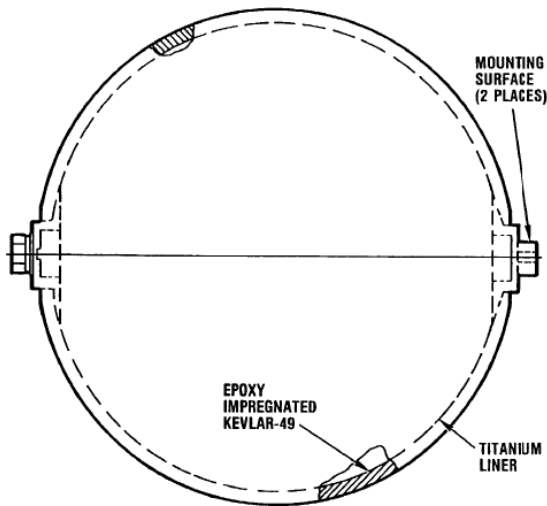
**Recommendation(s)/Lesson(s) Learned:** In addition to surface finish and concentric lap requirements for cryogenic valves, consideration should be given to the casting process to help ensure that no surface or subsurface porosity exists. Design of a seal and gland area for which a repeatable footprint exists would also decrease the probability of erroneously satisfying a leak check due to the random seal / imperfection overlap.

### C. Tanks/Accumulators

#### 10. Topic: COPV: Porosity at Girth Weld

**Discussion/Observation(s):** The Orbiter MPS GHe system contains ten spherical high pressure (4500 psi) Composite Overwrapped Pressure Vessels (COPVs), including seven small units (26 inch diameter, 4.7 ft<sup>3</sup> internal volume) and three large units (40 inch diameter, 17.3 ft<sup>3</sup> internal volume). These COPVs are shown schematically in Figure 4. The large units have a titanium liner and Kevlar/epoxy overwrap. The small units have either a titanium liner and Kevlar/epoxy overwrap (same as the large units) or a stainless steel liner and graphite/epoxy overwrap. A simplified diagram and a photo of the large and small GHe COPVs installed in a test stand at JSC are shown in Figure 13.

Following a flight readiness test on the vehicle, excessive GHe leakage that saturated a hand-held mass spectrometer was found to be emanating from the body of one of the small COPVs, specifically the pneumatic GHe tank, TK4. Although the indicated leak rate was still within the allowable range, the affected COPV was removed for failure analysis. Similar GHe leakage issues were subsequently experienced on other COPVs so this was not an isolated occurrence.



**Figure 13: Orbiter MPS GHe System COPVs**

**Problem Resolution(s):** The failure analysis revealed numerous small cracks in the girth weld of the titanium liner, all of which were associated with weld porosity. Leak testing, radiographic inspection, and fractographic analysis confirmed that the observed leakage was associated with several of these cracks which had initiated around the weld pores during proof-sizing and grown through the liner thickness due to pressure cycling in service. Note that the affected COPV had passed a multiple radiographic and ultrasonic inspections, GHe leak tests, and a proof pressure test prior to delivery, and all weld pores were within acceptable limits for size and location/distribution given the liner material and wall thickness involved. Pressure cycle testing was also performed on the discrepant tank to determine the nature of how pores can lead to through-cracks from repeated high pressure cycles over time.

**Recommendation(s)/Lesson(s) Learned:** External GHe leakage can manifest itself through the welds of a COPV even after a successful in-process inspections and final acceptance testing at the supplier. However, cracks originating from in-spec weld porosity will grow in a predictable and stable manner during pressure cycles and sustained high pressure application, resulting in detectable external leakage without compromising the structural integrity of the COPV. To minimize the potential for leakage, the maximum allowable pore size and location/distribution should be revisited. For tanks in service, the predictable growth characteristic makes every-flight leak checks a viable option.

#### *11. Topic: COPV Staged Pressurization*

**Discussion/Observation(s):** Following the Columbia accident, a review of the Orbiter COPV certification and operational practices commissioned by the NASA Engineering and Safety Center (NESC) raised concerns about stress rupture life predictions. Analysis indicated that the Orbiter COPVs were closer to experiencing a stress rupture failure than was previously thought. It was also determined that the fleet leader COPVs in test at JSC did not envelope the stress levels present in the Orbiter MPS GHe COPVs. Stress Rupture life of a COPV is defined as “the minimum time during which the composite maintains structural integrity considering the combined effects of stress level(s), time at stress level(s), and associated environments.” Since a large portion of a COPV’s strength is derived from its fiber overwrap, the health of the fibers is crucial to preserving tank service life. External environments including humidity, temperature, vacuum, and ultra-violet light accelerate degradation of the Kevlar fibers, thus reducing the stress rupture life. A team of engineers and scientists from the academic, contractor, and civil service communities developed a method to calculate service life hours that would account for all of these complex variables. Tracking the equivalent hours that the flight COPVs have accumulated was considered vital to managing risk for the SSP.

**Problem Resolution(s):** The Orbiter MPS GHe COPVs are typically brought to a flight pressure of 4300-4400 psia within 24 hours prior to launch. The analysis team found that temperature had a significant effect on COPV stress rupture life and a slight reduction in temperature could significantly reduce the impact on stress rupture life. Pressurizing the COPVs to the final flight condition in a single step caused the internal GHe temperature to rise to approximately 190 °F. In order to mitigate the detrimental effects of temperature on stress rupture life, a staged

pressurization approach was adopted. Subsequent to that change, the COPVs are first pressurized to 3600 psia while maintaining internal GHe temperatures below 140° F. After that initial pressurization, the internal temperatures are allowed to stabilize. During the final pressurization to 4435 psia, the internal GHe temperatures are not allowed to rise above 115°F. This operational change was considered to provide a significant benefit to the stress rupture life of the GHe COPVs.

**Recommendation(s)/Lesson(s) Learned:** The effects of multiple pressure and temperature cycles over time must be applied cautiously when estimating the stress rupture life of a COPV. In the end, the stress rupture life of a COPV is defined by statistical treatment of empirically derived data on the fibers of the overwrap. In the future, multiple COPV burst tests combined with advanced aging tests of the fiber material should be used to gather all data relevant to stress rupture prior to certifying a COPV for use on a reusable or expendable flight vehicle.

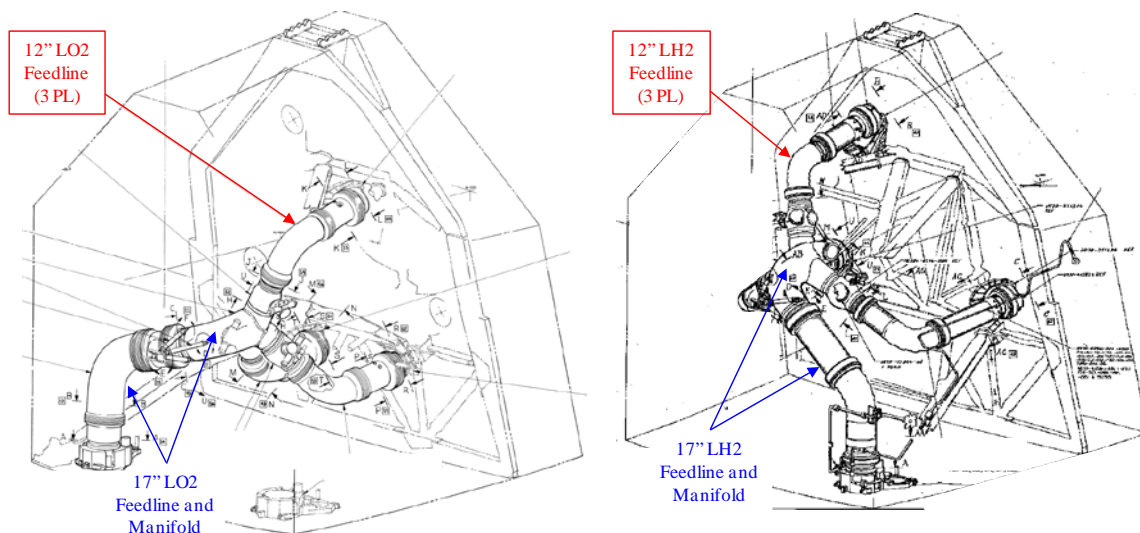
#### D. Lines/Manifolds/Fittings/Seals and Flexhoses

##### 12. Topic: LH2 Feedline Flowliner Cracks

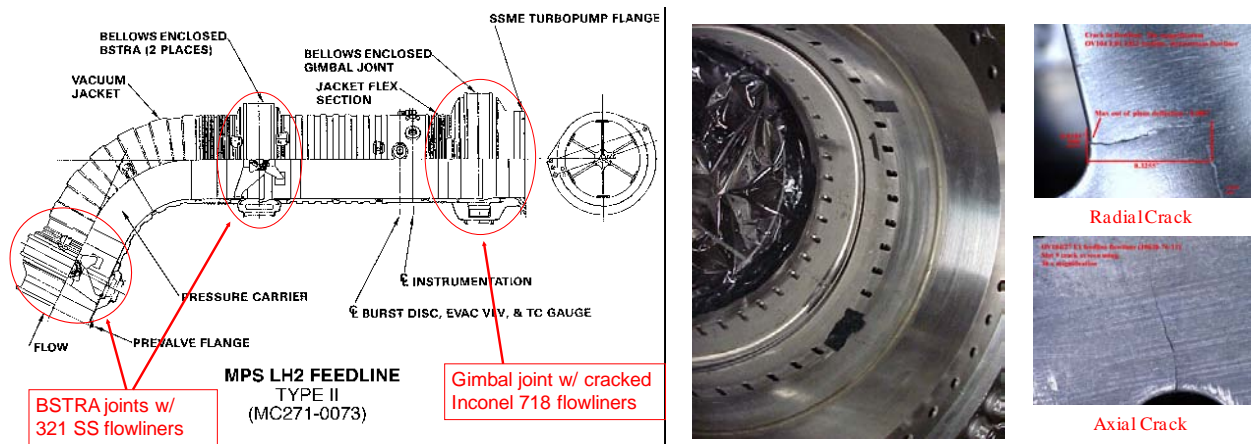
**Discussion/Observation(s):** The Orbiter MPS LO2 and LH2 systems each contain three 12 inch diameter cryogenic feedlines that run from the 17 inch manifold to the inlet of each SSME. These feedlines are shown schematically in Figure 2 and their installation locations are shown in Figures 1 and 14. All 12 inch feedlines incorporate a gimbal joint with a bellows and flowliner near the SSME inlet. The purpose of the flowliner is to smooth flow over the gimbal joint bellows and extend bellows fatigue life by eliminating flow induced vibration (FIV) in such a dynamic fluid flow and acoustic environment. The flowliners included a slot pattern to facilitate cleaning and draining operations. A diagram of the LH2 feedline and a photo of a cracked gimbal joint flowliner are shown in Figure 15.

In 2002, cracks were discovered in the Orbiter MPS 12" feedline flowliner slots, which are installed in the gimbaling joint immediately upstream of the SSME low pressure pump inlets. The cracks were found to initiate around the slots, which had been punched (i.e. stamped, not machined) into the flowliner material (321 stainless steel on Columbia and the MPTA, Inconel 718 on all other vehicles) to facilitate cleaning and bellows inspection during feedline fabrication. The cracks were determined to be caused by previously uncharacterized vibro-acoustic coupling of the flowliner and slots with high order surging and rotating cavitation generated by the SSME low pressure fuel turbopumps (LPFTPs).

**Problem Resolution(s):** All flowliner cracks were repaired by welding them closed while still on the vehicle. The flowliner slots were then precision-polished to remove any residual micro-cracks from the original slot punching process. Afterward, detailed inspections of all the slots using eddy-current and Repliset dental mold techniques were performed to baseline the condition of the hardware. Both inspection techniques were initially continued after every flight until mold contamination was discovered behind the flowliners. At that point, the mold impressions were discontinued in favor of eddy current plus visual inspection under magnification.



**Figure 14: Orbiter MPS LO2 and LH2 Feedline Configuration (LO2 on Left, LH2 on Right)**



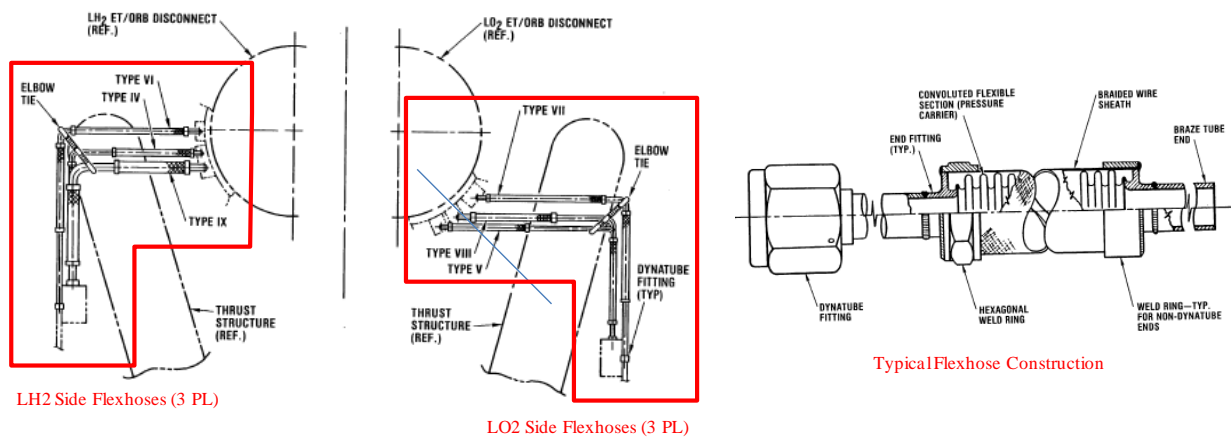
**Figure 15: Orbiter MPS 12 inch LH2 Feedline and Gimbal Joint Flowliner with Cracks**

In addition to the in-place weld repair and inspection procedure development, a significant amount of testing and analysis was also performed to characterize the complex pressure/flow field, acoustic environment, and associated flowliner stresses/strains created by the LPFTP at the SSME inlet. This effort resulted in a placard being placed on the operational time of the SSME LPFTP at certain operating speeds believed to cause destructive vibro-acoustic coupling with the flowliner. This placard was tracked at the SSP integration level for the remainder of the program, and resulted in some SSME hardware swap-outs to protect the flowliners.

**Recommendation(s)/Lesson(s) Learned:** Complex environments can couple with sensitive mechanical parts in fluid system components and cause fatigue cracking failures. As a result, the use of slotted flowliners in feedlines near engines should be avoided unless the manufacturing/inspection processes are chosen to minimize crack initiation sites, special care is taken to fully characterize the harsh environment at the engine interface to guide hardware design, and thorough testing is performed with representative hardware during certification (e.g. full range of pressures/temperatures, total operating time/propellant throughput, etc).

**13. Topic: Minimize Use of Flexhoses and Protect Them from Collateral Damage**

**Observation(s):** Six overbraided metal bellows flexhoses are used in the Orbiter MPS to transmit high pressure GHe for pneumatic actuation of the 17 inch LO2/LH2 disconnects and low pressure GHe for purging/repressurization of the LO2/LH2 manifolds. Flexhoses are needed for this purpose to accommodate the separation and ~2.5 inch retraction of the 17 inch LO2/LH2 disconnects that join the Orbiter MPS to the ET. The flexhoses are shown schematically in Figures 2 and 4. Details of the flexhose installation and construction are shown in Figure 16.



**Figure 16: Orbiter MPS Flexhoses (3 on LH2 Side, 3 on LO2 Side) and Construction Details**

Due to recognized difficulties in achieving repeatable manufacturing processes, flexhoses are frequently oversized in terms of rupture pressure and cycle life capability. However, single event overload of a convoluted section, such as by stepping on the flexhose, can quickly reduce margins below minimum levels leading to premature failure in service. This type of collateral damage has occurred on numerous occasions due to high personnel traffic in the vicinity of the Orbiter/ET umbilical where the MPS flexhoses are located. In this area, where technicians routinely perform non-MPS pyrotechnic servicing and other electrical mate/demate work, the hoses have been used as a step or hand-hold by personnel unfamiliar with the sensitivity of this hardware. The results have included visible damage to the overbraid (i.e. “birdcaging”), external leakage of the hose, and unscheduled maintenance actions to replace damaged hoses.

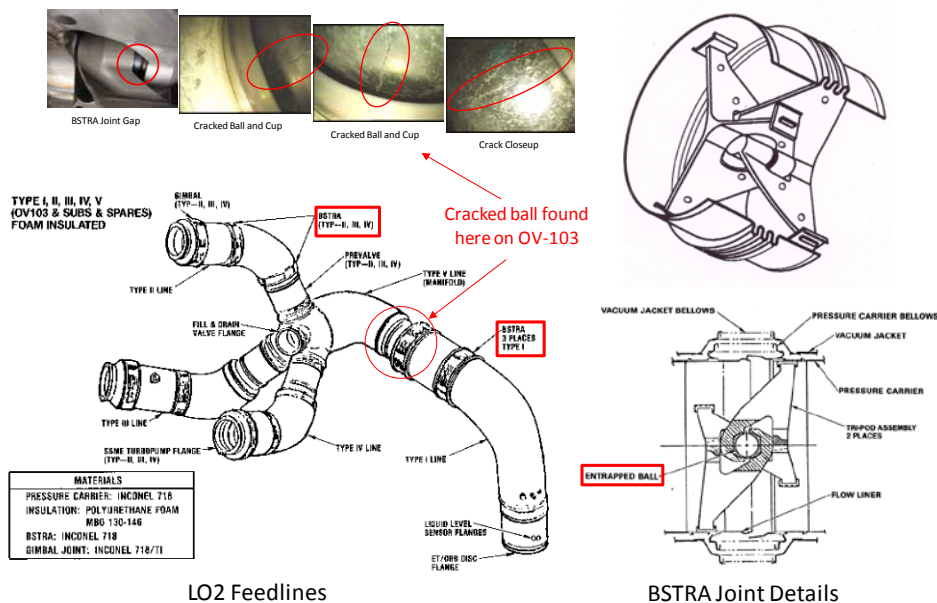
**Problem Resolution(s):** In response, the SSP imposed flexhose familiarization training for technicians and routine inspections for “bird-caging” of the external metallic overbraid, which could indicate potential overload of the underlying convoluted pressure carrier. Temporary covers were also made and installed during ground turnaround operations to avoid inadvertent personnel contact with the flexhoses. In some cases, the hoses were even removed or installed later than planned to minimize the potential for inadvertent personnel contact.

**Recommendation(s)/Lesson(s) Learned:** For any spacecraft application, particularly on reusable vehicles, the use of flexhoses should be minimized. Where flexhoses are deemed necessary, they should be located away from areas of high personnel traffic and protected from potential collateral damage.

**14. Topic: LO2 Feedline BSTRA Ball Cracks**

**Discussion/Observation(s):** The Orbiter MPS 17 inch and 12 inch LO2 and LH2 feedlines each incorporate two or three flexible ball strut tie rod assembly (BSTRA) joints to accommodate installation tolerances, relative motion, and induced axial loads during propellant loading, SSME firing, and Orbiter/ET umbilical retraction. The LO2 and LH2 feedlines are shown schematically in Figure 2 and their installed locations are shown in Figures 1 and 14. The construction of each BSTRA joint includes two sets of tripod struts surrounding a central metallic ball and socket, with two bellows, one for the inner pressure carrier and one for the outer vacuum jacket, surrounding the entire joint. There are 18 BSTRA joints per vehicle that contain balls ranging in diameter from 1.25 inches to 2.24 inches. Note that all Orbiter balls are made of cast Stoody 2 material.

During routine internal feedline inspections with a borescope, a cracked ball was observed in the manifold BSTRA joint of an installed 17 inch LO2 feedline. Concerns associated with a cracked BSTRA ball included feedline structural failure (lack of load transmission through the ball causes a bellows failure), BSTRA joint malfunction (improper articulation due to friction/binding), and SSME damage/failure from the ingestion of foreign object debris (FOD) particles (ignition or structural failure due to impact, blockage of critical flow passages, etc.). Details of the LO2 feedline layout, BSTRA joint construction, and cracked BSTRA ball are shown in Figure 17.



**Figure 17: Orbiter MPS LO2 Feedline Configuration and BSTRA Joint Details**



**Problem Resolution(s):** Due to difficulties in accessing the affected BSTRA joint, special visual inspection tooling had to be developed and demonstrated. Besides a borescope, this tooling included a pneumatically operated clamp to squeeze the struts together and loosen the ball within the cups, plus a long slender pole containing a manually driven wheel that could contact and rotate the ball. Rotating the ball was desired to assure full visual inspection of the surface through the narrow gap between the cups, but this was not possible in all cases due to binding of the ball in the as-installed feedline. Best effort inspections of the entire fleet confirmed that only the 17 inch LO2 feedline manifold BSTRA ball was cracked. As a result, the affected feedline was removed from OV-103 and sent to the vendor for replacement of the discrepant BSTRA joint and extraction of the cracked ball for failure analysis.

Failure investigation work determined that the BSTRA ball cracks were caused by a defect related to an inadequate manufacturing process and poor quality screening. Silica inclusions from the sand cast process remained on the ball surface and created a thermal expansion mismatch with the Stoody 2 parent material, resulting in the formation of small thumbnail cracks during high temperature exposure associated with application of the Vitrolube coating. The balls were dye penetrant inspected before that heat cycle because no such inspection was possible after Vitrolube application. Subsequent thermal stresses from cryogenic propellant exposure then propagated the cracks through the Vitrolube coating.

A best-effort borescope inspection without ball rotation was later implemented on an every flight basis. In addition, a significant amount of testing was conducted on spare BSTRA balls to demonstrate crack arrest following thermal shock, characterize any FOD particles liberated from the cracks to ensure safe ingestion by the SSMEs, and verify continued functionality of a BSTRA joint with a cracked ball based on mechanical and thermal cycle testing. For new production BSTRA balls, a Hot Isostatic Press (HIP) process was used to reduce/eliminate subsurface voids. An improved ATP was also implemented, which included five cryogenic cycles in LN2 followed by a computed tomography (CT) and eddy current (EC) inspection before installation into the feed line. For the spare BSTRA balls in inventory, all units had the Vitrolube coating removed and underwent CT and EC inspection to screen out any units with existing crack indications.

**Recommendation(s)/Lesson(s) Learned:** The casting process can cause voids/inclusions in the parent material, leading to thermally-induced crack formation during subsequent steps in the manufacturing process or while in service. The HIP manufacturing technique can reduce or eliminate voids in the cast material as it cools. In addition, an inadequate acceptance testing and inspection process failed to detect the small cracks. This screening process should be made as robust as possible.

#### *15. Topic: Torque relaxation in Cryogenic Joints*

**Discussion/Observation(s):** Numerous instances of loosened flange bolts at cryogenic joints in the LH2 system were discovered while investigating GH2 leakage detected by the Shuttle Hazardous Gas Detection System (HGDS). The affected joints had previously been assembled and passed a leak check with GHe at ambient temperature but subsequently began leaking GH2 at cryogenic temperatures. In general, when the interior of a line is chilled-down with cryogenic fluid, the bolted flange cools at a slower rate causing that area to remain at an elevated temperature for some period of time. This apparent thermal expansion of the bolted joint causes a temporary drop in preload. When the inside of the line is suddenly warmed, as when the system is inerted following ascent, the opposite effect occurs so the joint preload rises and may even yield the bolts slightly. This serves to reduce the joint preload at ambient temperature. Some of the affected flange joints used a Teflon-coated metallic seal while others used a fully non-metallic seal. With a non-metallic seal, it is possible for cold flow of the seal material to occur during the process, thus reducing the joint preload and sealing effectiveness permanently. This reduction may manifest at ambient temperature.

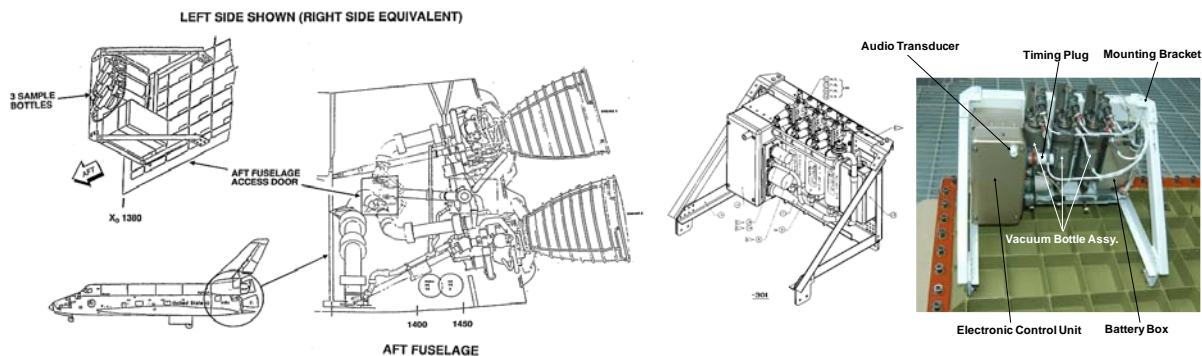
**Problem Resolution:** A recurring post-flight torque check was considered for the bolts at all cryogenic flange joints in the LH2 system. However, this was not implemented due to complexities associated with access to each of the joints. Instead, only the affected joints were re-torqued and the risk of external GH2 leakage was mitigated via continued GHe leak checks at ambient temperature plus operation of the HGDS.

**Recommendation(s)/Lesson(s) Learned:** Design cryogenic joints with materials having similar coefficients of thermal expansion. Consider geometry to minimize thermal gradients and relative thermal expansion. Design the lines and flange joint insulation for maximum access to bolts. Use Teflon-coated metallic seals rather than thicker non-metallic seals. If non-metallic seals must be used, allow time for cold flow of the material to occur, and perform a re-torque after 24 or 36 hours.

## Miscellaneous / System Level

### 16. Topic: Real-Time Haz-Gas Detection

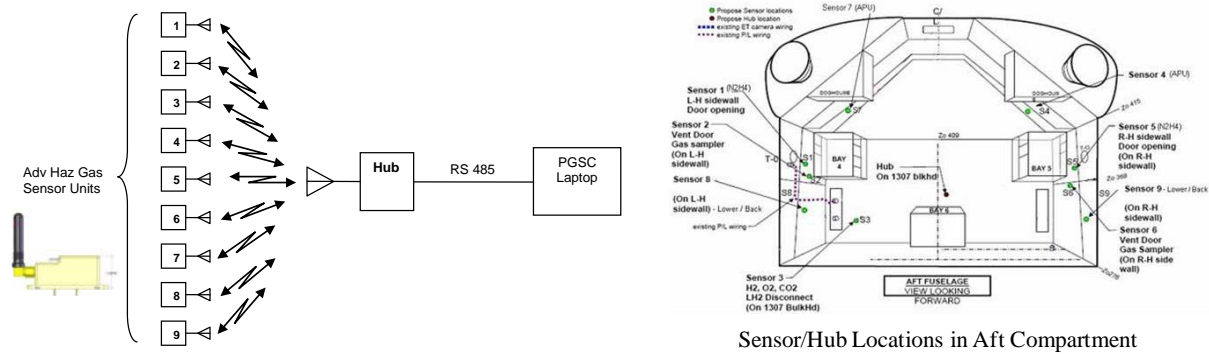
**Discussion/Observation(s):** The Space Shuttle hazardous gas (haz gas) detection system philosophy can be divided into two phases: pre-launch/loading and in-flight. The pre-launch monitoring system utilizes a high-fidelity mass spectrometer system, but gases must be pumped from the vehicle (e.g. orbiter aft compartment) into the Mobile Launch Platform (MLP) for analysis and measurement. In flight, haz gas detection is limited to six pyro-fired evacuated sample bottles in the Orbiter aft compartment, three of which are mounted in a rack by each of the two access doors in the Orbiter aft compartment. The bottles are fired individually at discrete points in time during ascent and the contents captured by each bottle can only be analyzed for excessive levels of  $\text{GO}_2$ ,  $\text{GH}_2$ , and  $\text{GHe}$  during post-flight processing. A diagram and photo of the haz gas bottles is shown in Figure 18.



**Figure 18: Orbiter Aft Fuselage Gas Sampler System (OAFGSS) Haz Gas Bottles**

The haz gas philosophy described above created several dilemmas. First, the pre-launch time lag for transport and analysis of the sampled gases, combined with the relatively small number of sense port locations, could skew the concentration data with respect to time or spatial aspects (e.g., gas-mixing in the aft compartment was not well characterized), making troubleshooting difficult for suspected system leaks. Second, many fluid joints in the SSME are maintained at low pressure until engine start approximately six sec prior to liftoff, which means that leakage integrity of those joints can not be assessed with the high-fidelity pre-launch system due to the previously mentioned transport lag. Lastly, the pyro-fired sample bottles sometimes failed to operate correctly or had leakage issues that compromised the samples, and the few discrete data points measured in only two locations provided very little insight into the actual conditions in the aft compartment during ascent.

**Problem Resolution(s):** The pyro valves on the haz gas bottles were redesigned to provide more effective sealing and reliable operation. The Orbiter Maintenance Requirements Specification (OMRS) was also changed to prevent post-flight SSME processing until the MPS Integration community had reviewed the in-flight haz gas bottle data. This was done to preserve the hardware state in case anomalies involving potential MPS system leakage were indicated by the data. In the post-Columbia accident time frame, an advanced haz gas monitoring system (AHGMS) was also proposed to continuously record pre-launch and ascent data using an array of nine “stick-on” solid state wireless haz gas sensors mounted throughout the aft compartment. A schematic representation of the proposed system is shown in Figure 19.



**Figure 19: Proposed Advanced Haz Gas Monitoring System for the Orbiter Aft Compartment**

The sensors in this system were intended to be similar to those flown as a detailed test objective (DTO) on two Shuttle flights in the late 1990's. The system would not have provided “real-time” data, but would have provided a fully continuous (i.e., not discrete) set of data points from a variety of locations within the aft compartment that could be downloaded post-MECO for immediate evaluation prior to entry. However, cost and schedule considerations prevented the proposed system from being implemented.

**Recommendation(s)/Lesson(s) Learned:** The use of a real-time, on-board hazardous gas detection system would eliminate concerns about data time lag, gas mixing, and inability to evaluate all pressurized systems for potential leakage, and should be implemented on future hydrogen/oxygen space vehicles.

**17. Topic: Design for Proper Assembly**

**Discussion/Observation(s):** Several instances of incorrect assembly involving fluid and electrical system hardware have occurred on the flight vehicle and associated ground support equipment (GSE)/special test equipment (STE). Examples include improper connection of servicing commodities to fluid systems sharing a common disconnect/coupling design and service panel location, incorrect installation of fluid system components with common inlet/outlet tube stub sizes due to missing or ambiguous flow direction markings, and improper assembly of electrical wire harnesses sharing a common connector design and adjacent location. Erroneous or ambiguous procedures and human error also played a role in some cases. Rework, and in some cases and hardware damage, could result from these types of issues.

**Problem Resolution(s):** Various – generic hardware design guideline

**Recommendation(s)/Lesson(s) Learned:** Preclude incorrect hardware installation/assembly by designing fluid and electrical system components and connectors to fit in one orientation/configuration only. Examples include physical separation, keyed electrical connectors and fluid disconnects/couplings, different size threads or tube stubs on the inlet and outlet of fluid system components, and clear flow direction markings on fluid system components. Other examples include design features that allow component piece-parts or seals to fit together in one way only, making further assembly impossible if not correctly positioned. The use of directional springs, shims, or spacers should also be minimized or eliminated where possible. The use of these design features/techniques will also aid in early identification of assembly errors via visual inspection and/or component or system level testing/checkout.

**18. Topic: Complications of Inerting Hydrogen Systems in Space**

**Discussion/Observation(s):** Following MECO, residual LH2 is expelled from the 17 inch feedline, 17 inch manifold, and 12 inch feedlines prior to cutting power to the SSME avionics and isolating MPS GHe pneumatics for the on-orbit stay. In the case of an early engine-out abort, residual LH2 must be expelled quickly to prevent re-entering the atmosphere with a hazardous quantity of propellant. During these events, residual LH2 will flash-freeze in the lines from exposure to the vacuum of space. For nominal on-orbit operations, a time delay of several minutes followed by a lengthy vacuum inert sequence allows the frozen H2 to sublime and be expelled through open valves over time. This software-controlled process is generically referred to the “MPS dump.” Early in the Shuttle Program, a crew switch throw was used to initiate the sequence. This early software sequence left a considerable amount of frozen H2 in the system, resulting in a significant buildup of pressure in the closed LH2 system. The resulting GH2 then vented through the LH2 manifold relief valve’s outlet flame arrestor, causing heat damage to the vertical stabilizer, increasing the criticality of the relief system, and posing a risk to ground personnel post-landing.

**Problem Resolution(s):** The software was updated to greatly reduce post-dump residuals, thus eliminating unwanted cycling of the LH2 manifold relief valve on a routine basis. A later software update automated several features, eliminating the need for a crew switch throw and incorporating an automated response to system failures. Also, the entry point for the GHe used to help expel the residual LH2 from the manifold was changed from one location to another.

**Recommendation(s)/Lesson(s) Learned:** The relief system should be a backup system by design, not one relied upon to prevent system or vehicle damage. In addition, it was learned that hydrogen tends to freeze on the cold walls of the system, making expulsion of the commodity difficult near its triple point. Relatively warm helium helps in sublimating the hydrogen, as does a lockup time before another period of opening the system to the vacuum of space.

*19. Topic: Effect of Instrumentation Resolution on Parameter Limits*

**Observation(s):** The Orbiter MPS contains a variety of sensors to monitor pressure, temperature, valve position, and voltage performance of the system during pre-launch and flight. The analog outputs from these sensors are routed through the Orbiter Instrumentation (OI) system where Dedicated Signal Conditioners (DSCs) are used to generate equivalent digital signals for the purpose of onboard data recording and downlink via telemetry. The resulting minimum resolution for each measurement (also referred to as the ‘minimum bit’ or ‘bit toggle’) can vary, and issues can arise when comparing the digitized sensor outputs to established operational limits. For example, a set of launch commit criteria (LCC) or flight rule may be specified with a limit value that cannot be measured directly due to data resolution limitations in the OI system.

**Problem Resolution(s):** The SSP philosophy dictates that a conservative value be assumed when establishing a limit value in the LCC or flight rules. For example, if a redline value is 10 psi minimum but the bit toggle of the associated pressure sensor limits the output to a value of 8 or 12 psi, then the limit would be adjusted appropriately in a conservative direction. In this case, the operational limit would become 12 psia minimum.

**Recommendation(s):** When defining the allowable limits for pressure, temperature, or other system parameters, the bit toggle of all associated sensors should be accounted for in establishing those limits.

### III. Lessons Learned in Hardware Certification

Per SSP guidelines, not all components require formal certification for flight. In fact, it is emphasized that system level design verification is preferred over individual component certification wherever possible to reduce cost and schedule. This type of integrated approach can also produce a more realistic and comprehensive verification of the hardware. This basic philosophy led to integrated testing on the Main Propulsion Test Article (MPTA), GHe system test stand, Orbiter/ET umbilical, Orbiter/Ground T-0 umbilical, and Orbiter/ET integrated test stands. The results of these integrated tests provided improved confidence in hardware design and system integration, propellant loading procedures, contingency procedure development, and identification of weaknesses or areas of improvement.

When confidence in the design cannot be satisfactorily established at a higher level of integrated assembly, a component’s design may be certified by analysis, similarity, qualification testing, or any combination of those three techniques. With the many unique and complex hardware designs used in reusable space vehicles, the dominant means for certification is often qualification testing of individual components, or analysis supplemented by testing.

Qualification testing of individual components can be expensive, often resulting in compromises being made. For example, a reusable vehicle designed for 100 flights would ideally require at least 100 thermal cycles on cryogenic components during qualification testing. Additional cycles would be needed if a scatter factor is applied to cover contingencies, analytical uncertainties, unit-to-unit variation, and test-setup peculiarities. For large cryogenic valves requiring chilldown to sub-cooled LH2 temperature, such thermal testing would be complex and take an extremely long time to complete, making it impractical and expensive. As a result, the vast majority of the MPS cryogenic valves were only tested to a maximum of three thermal cycles. A related compromise involved the use of liquid nitrogen (LN2) instead of sub-cooled LH2 for qualification testing. Cryogenic life cycle testing can be performed more quickly, safely, and inexpensively using LN2, but with a corresponding loss of fidelity in accomplishing the goal of qualification testing: uncovering design defects.

Several notable deficiencies in the area of component certification have been identified over the years during problem investigations and dedicated certification reviews. A number of these deficiencies are discussed in the sections that follow.

#### A. Topic: Representative Vibration Testing

**Observation/Discussion:** Random vibration testing during flight certification is intended to encompass worst case (flight and ground) conditions. A combination of instrumented ground/flight testing and analysis may be needed to define the appropriate power spectral density curves in the applicable environmental test requirements document. Once the magnitude and duration of that environment has been properly established via translation to the component, the hardware must be tested using flight representative mounting hardware, fluid lines (including tie-downs), and electrical harnesses (including tie-downs) in order to provide an acceptable level of fidelity.

**Example(s):** Improper mounting/restraint of the 3/8 inch long outlet tube on an installed GH2 flow control valve (FCV) led to fatigue cracking and external leakage of a seal weld that was inadvertently subjected to additional external loads resulting from component installation. This issue was discovered during mass spectrometer leak testing after the STS-41 aft compartment H2 concentration investigation. It was suspected that qualification life testing on the FCV was performed with an incorrect line clamping configuration, imparting a different and less severe set of loads into the outlet tube. Due to the potential for an underqualified condition, an every-flight leak check was implemented. This was considered adequate since there was good correlation between the ambient temperature GHe leak checks and ambient temperature GH2 leakage. In addition, analysis determined that a leak rate three orders of magnitude higher than observed on the vehicle would be needed to result in a flammable concentration of H2 within the aft compartment, assuming perfect mixing.

#### **B. Topic:** Periodic Review of Environments for Impact on Certification

**Observation/Discussion:** Following the Columbia accident, a Shuttle “Mid-life Certification Review” was initiated to determine if the vehicle was still being operated and flown within the original design certification limits. These reviews were conducted on each vehicle subsystem, including Orbiter MPS, and looked for instances where a performance or environmental parameter was not adequately considered during initial certification or where the required performance/environments had changed over time (“mission creep”). The resulting certification discrepancies were generically referred to as “poke-outs.”

**Example(s):** Several poke-outs related to mission creep were identified. One example involved the number of pressure cycles per flight on the GHe 2-way solenoid valve, which greatly exceed the predicted value at the time of original qualification. Another example involved the 750 psi GHe regulator which was certified to an initial set of flowrates, but SSP changes brought about the use of additional flowrates by the SSMEs. The 750 psi regulator was also certified for an inadequate number of slam starts (supplying inlet pressure quickly without a downstream flow demand). Changes in ground checkout requirements had driven the number of slam starts up but, fortunately, the actual number of slam starts was already being tracked due to a known limited life on the bellows. To address this shortcoming, a delta qualification test was performed to demonstrate the capability for additional slam starts. Similarly, the GHe accumulator was being pressure cycled at a great predicted to exceed its certification by a factor of four. This issue was addressed by performing fracture analysis to clear the hardware for 5,000 maximum pressure surge cycles. Numerous other poke-outs were found on components throughout the system, all of which were addressed via additional analysis, testing, hardware rework, or appropriate risk acceptance rationale.

#### **C. Topic:** Certification by similarity

**Observation/Discussion:** Certifying a component design by similarity to one that has previously been qualification tested for a different application offers a variety of cost and schedule benefits. Per SSP guidelines, “Similarity analysis may be used in lieu of tests where it can be shown that the article is similar or identical in design, manufacturing process, and quality control to another article that has been previously certified to equivalent or more stringent criteria.” When certifying by similarity, it is critical to ensure that all attributes of the hardware and new application (e.g. materials, loads, fluid and environmental exposure environments, etc.) are truly similar to the prior application. Any differences or omissions must be addressed by supplemental analysis and/or delta qualification testing. Further, certification by similarity should only extend to a single design beyond the originally certified hardware. For example, certifying hardware by similarity should be avoided when the reference hardware was certified by similarity to yet another previous design. This is referred to as “daisy-chaining” and it could result in inadequate certification coverage.

**Example(s):** One example of this principle involves the Orbiter MPS cryogenic pressure and temperature transducers. These items were certified for use on Apollo by similarity to earlier programs where testing was conducted in the late 1950’s and early 1960’s. As a result, a high failure rate of these transducers has been consistently observed over the years on Shuttle. Because there is redundancy in the transducer applications on Shuttle, no requalification effort was undertaken.

**D. Topic:** Testing in LH2

**Observation/Discussion:** Careful consideration should be given to the often more expensive but much more realistic option of testing with the correct saturated cryogenic fluid (LH2). The downstream savings in safety and reliability may be well worth the initial cost and schedule impact.

**Example(s):** One example involved a 2 inch cryogenic ball valve that jammed during LH2 life cycle testing after passing ATP in LN2. (Life cycle qualification testing was coincidentally occurring because of the need to certify a new ball valve vendor). Failure analysis identified an oversized piston seal groove as the cause, but this failure underscored the fact that the LN2 ATP was inadequate to screen for certain piece-part defects. As a result of this anomaly, the ATP was changed to require LH2 testing of the ball valves. If budget had been particularly tight, another option might have been to rely on enhanced piece-part inspections, keeping LN2 testing in place for gross detection of non-conformances in a given valve build.

Another example involved the LH2 17 inch disconnect shaft seal leakage that was partly responsible for the STS-35 and STS-38 launch delays during the summer of 1990. Several instances of launch delays caused by H2 leakage have occurred throughout the SSP, most notably on STS-7, STS-29, STS-45, STS-47, and STS-80. Special drag-on leak detectors during a tanking test, correlated with the propellant loading timeline, identified a leak at the ET-side flapper shaft and follower arm shaft seals. Acceptance testing of the ET half disconnects used LN2 instead of LH2 at the time. As the instrumented tanking tests showed, leakage values could increase greatly at sub-cooled LH2 conditions when compared to LN2 conditions. This illustrates the difficulty in pinpointing cryogenic leaks when testing with anything but sub-cooled LH2. In fact, a reliable correlation between leakage at LN2 vs. LH2 temperatures cannot be readily established without detailed knowledge of the joint design, combined with relevant test history on that particular joint. Subsequently, the ATP was changed to require the use of LH2 for cryogenic acceptance testing.

**E. Topic:** Demonstration of Margin During Qualification Testing

**Observation/Discussion:** Designed-in redundant features or analytical margin are not always verified by test. Design margin for a pressurized component should be demonstrated during qualification testing by performing burst testing, verification of redundancy, and operation with off-nominal inputs. Demonstrate workmanship margin during acceptance testing where contamination or differential expansion of piece-parts may impede intended function.

**Example(s):** One example of this concept involves the burst testing performed on propellant components and pressurized vessels. For Orbiter MPS hardware, common burst factors are 1.5, 2.0, and 4.0, depending on the component, which are applied near the end of qualification testing. The pass fail criterion is that the unit holds pressure for a given amount of time without permanent deformation/distortion. There is no requirement for performance after the burst test as it is only testing the analytical design margin for strength.

Another example involves testing a valve with a single position retention feature in place where dual retention features are designed-in and normally present in service. This proves that a single feature can keep the valve open or closed under a given set of loads and environmental conditions. This also demonstrates that the second feature can be considered fully redundant to the first. This type of margin testing was performed post-Challenger with the pre-qualified. In that case, open position pneumatic pressure was removed, and the valve was flow tested in the open position to prove that it would not fail closed in flight even with a loss of internal redundancy. Flow testing was conducted with both detents or equivalent load cells in place and at 65% and 109% of rated flow.

One feature that is commonly verified is the ability of a propellant valve to function properly with low GHe pneumatic supply pressure, such as 400 psi instead of the nominal 750 psi. When performed during ATP, such as with proof pressure testing and low pressure actuation testing at cryogenic temperatures, workmanship margin is demonstrated.

**F. Topic:** Qualification Testing for Combined Environments

**Observation/Discussion:** Spacecraft hardware experiences a combination of applied loads and environmental conditions, such as thermal, pressure, flow, and mechanical loads, both in flight and during pre-flight ground preparation. However, due to technical practicalities and cost/schedule constraints, only a few test conditions can reasonably be combined during qualification testing.

A potential solution is to test more than one specimen, combining a subset of loads on one unit and another subset on a different unit, but this is not typically done due to cost and schedule constraints. Another potential solution is to test such environments serially, but since this can result in an overtest for the qualification hardware in some respects, a failure may not be truly indicative of a design deficiency. Another drawback of such serial testing is that it does not truly combine environments at the same time.

Whenever practical, loads should be combined during qualification testing. Future launch vehicle design should build upon experience gained during individual hardware certification methodology successes and failures.

**Example(s):** As an example, a cryogenic valve may simultaneously experience very cold temperature, fluid forces on the closure device, installation and engine thrust loads, and random mechanical and flow-induced vibration, all while being required to cycle open and closed within given response time constraints and meet other critical performance requirements. Particularly for cryogenic valves, it is difficult to test under both vibration and fluid flow conditions. For larger valves, fluid flow testing is often omitted entirely due to cost, risk, and complexity. Where fluid flow testing was performed for Orbiter MPS components, it was often not done until a problem was encountered in service that drove the need for such a test.

#### **IV. Conclusion**

The design, certification, and operation of the Shuttle IMPS have produced many lessons learned over the course of the SSP. A subset of these items related to the Orbiter MPS were discussed in this manuscript for consideration when designing, building, and operating future spacecraft propulsion systems. The experiences and lessons learned discussed herein are chiefly applicable to main propulsion systems using LO<sub>2</sub> and LH<sub>2</sub> propellants on reusable crewed spacecraft, but non-crewed or expendable launch vehicle propulsion systems could benefit from a review of the this material. Likewise, non-cryogenic propulsion systems could also benefit from a review of this material due to the inclusion of universal topics such as GHe pressurization components and tank-related issues.

This manuscript divided discussion topics into two general categories: hardware design and hardware certification. Within the hardware design section, experiences and lessons learned were discussed in the following subject areas: valves and regulators, tanks/accumulators, lines/manifolds/ fittings/seals and flexhoses, and other system-level integration issues. Within the hardware certification section, experiences and lessons learned were discussed in the areas of environment testing and margin demonstration.

Additional manuscripts involving Orbiter MPS lessons learned are planned for future publication. Examples of potential content include the following (in no particular order): system instrumentation configuration, probabilistic risk analysis (PRA), performance and failure trending, design for maintainability, requirements creep over time, aging vehicle / program issues, use of modified catalog parts, Orbiter/ET disconnect development and performance issues, document and data preservation, test stand maintenance, system cleanliness and contamination control, vacuum-jacketed feedline development and maintenance/repair issues, incremental system modifications, and many others. This incremental approach is thought to provide the most manageable and comprehensive means of documenting the many important experiences and lessons learned on Orbiter MPS.

#### **Acknowledgments**

The authors of this manuscript had the unique opportunity to engage with multiple teams comprised of hundreds of engineers and technicians supporting the SSP, including multiple NASA centers, contractors, and subcontractors. Included in that list are the current Orbiter Project Office Manager, William McArthur, and the Systems Engineering and Integration Office Manager, Donald Noah. This manuscript describes the collective efforts required to identify and resolve the many technical challenges that have occurred over the course of the SSP. It would be impossible to recognize each individual's contribution to the successful design, fabrication, test, and operation of the IMPS. As such, the authors would like to thank all the other engineers and technicians who contributed to and supported the Space Shuttle IMPS. In particular, this manuscript would not have been possible without the technical content and insight provided Phillip Cota, who was the original Orbiter MPS Subsystem Manager at JSC.

## Acronym List

AHGMS	Advanced Haz Gas Monitoring System
ATP	Acceptance Test Procedure
BSTRA	Ball-Strut Tie Rod Assembly
COPV	Composite Overwrapped Pressure Vessel
CT	Computed Tomography
DSC	Dedicated Signal Conditioner
DTO	Detailed Test Objective
EC	Eddy Current
ECO	Engine Cutoff
EEE	Electrical, Electronic, and Electromechanical
ET	External Tank
FCV	Flow Control Valve
FIV	Flow Induced Vibration
FOD	Foreign Object Debris
GH2	Gaseous Hydrogen
GHe	Gaseous Helium
GN2	Gaseous Nitrogen
GO2	Gaseous Oxygen
GSE	Ground Support Equipment
H2	Hydrogen
HGDS	Hazardous Gas Detection System
HIP	Hot Isostatic Press
IMPS	Integrated Main Propulsion System
JSC	Johnson Space Center
LCC	Launch Commit Criteria
L/D	Length-to-Diameter ratio
LH2	Liquid Hydrogen
LN2	Liquid Nitrogen
LO2	Liquid Oxygen
LPAT	Low Pressure Actuation Test
LPFTP	Low Pressure Fuel Turbopumps
MECO	Main Engine Cutoff
MLP	Mobile Launch Platform
M&P	Materials and Processes
MPS	Main Propulsion System
MPTA	Main Propulsion Test Article
NASA	National Aeronautics and Space Administration
NESC	NASA Engineering and Safety Center
O2	Oxygen
OAFGSS	Orbiter Aft Fuselage Gas Sampler System
OI	Orbiter Instrumentation
OMRS	Orbiter Maintenance Requirements Specification
PRA	Probabilistic Risk Analysis
PSI	Pounds per Square Inch
SSME	Space Shuttle Main Engine
SSP	Space Shuttle Program
STE	Special Test Equipment
STS	Space Transportation System
T-0	Time-zero
UPSC	Ullage Pressure Signal Conditioner
WSTF	White Sands Test Facility