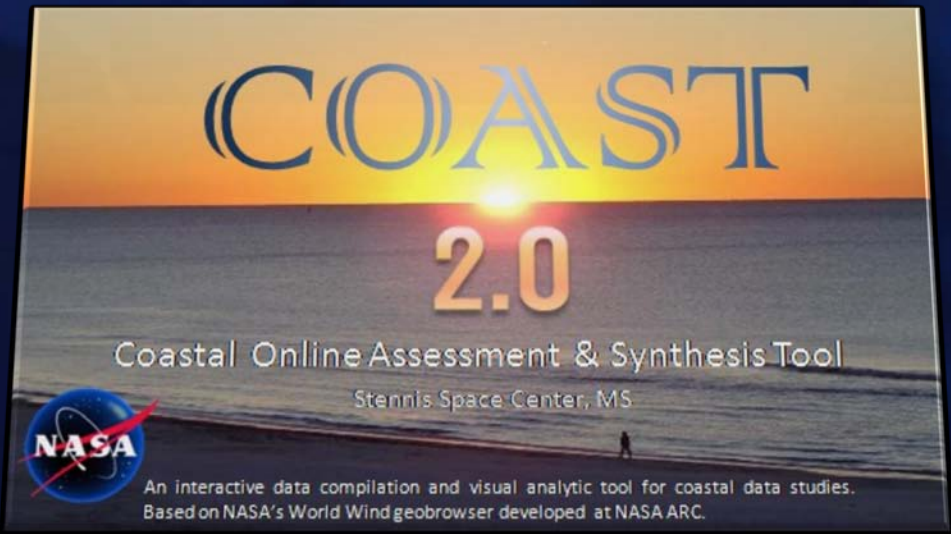




National Aeronautics and Space Administration

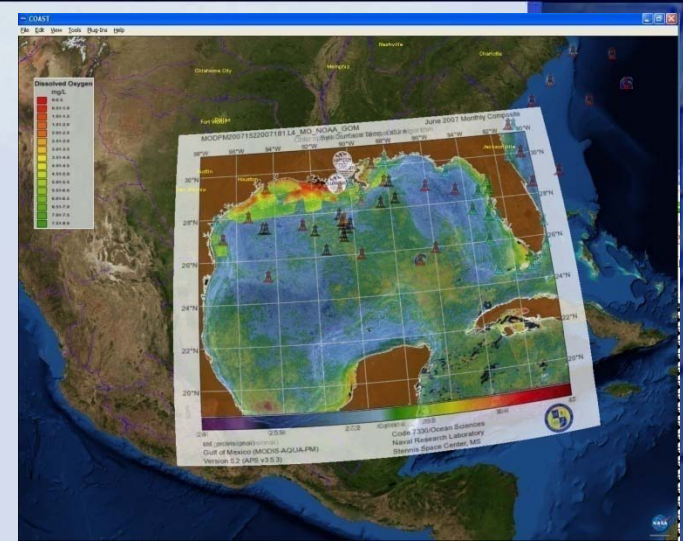
# Coastal Online Analysis and Synthesis Tool 2.0



Richard B. Brown, Science Systems and Applications, Inc.  
Andrew R. Navard, CSC  
Beth T. Nguyen, Delta Computer Solutions, Inc.  
John C. Stennis Space Center, MS 39529 USA



The Coastal Online Assessment and Synthesis Tool (COAST) 3D geobrowser has been developed to integrate disparate coastal datasets from NASA and other sources into a desktop tool that provides new data visualization and analysis capabilities for coastal researchers, managers, and residents.



- Built upon the widely used NASA-developed open source World Wind geobrowser from NASA Ames (Patrick Hogan et al.)
- .Net and C# version used for development
- Leveraged off of World Wind community shared code samples
- COAST 2.0 enhancement direction based on Coastal science community feedback and needs assessment (GOMA)

**Main objective: empower user to bring more user-meaningful data into multi-layered, multi-temporal spatial context**



# World Wind

## Active Collaboration

Department of Energy  
Oak Ridge National Laboratory  
Climate Change Prediction Program



U.S. Navy  
Naval Air Systems Command



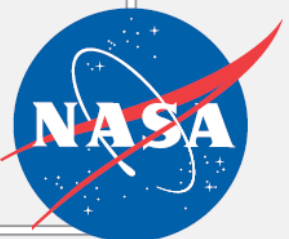
USDA & USGS  
GeoWind



John Hopkins University  
Applied Physics Lab



U.S. Army  
National Simulation Center



## Partners



Department of Energy  
National Nuclear Security Administration  
Special Technologies Lab



National Geospatial-Intelligence Agency



U.S. Army Air Traffic Control  
Tactical Airspace Integration System (TAIS)



U.S. Navy Naval Research Labs  
Comprehensive Maritime Awareness



UAH Satellite data analytical tools and data mining algorithms



NASA Goddard Search & Rescue Mission Office

## International Users

European Space Agency



World Bank



Japan Aerospace Exploration Agency



Petróleos Mexicanos



Geoscience Australia



Coordinating with NASA Ames on WW Integration (some contributing partners soon)

Funding World Wind Development

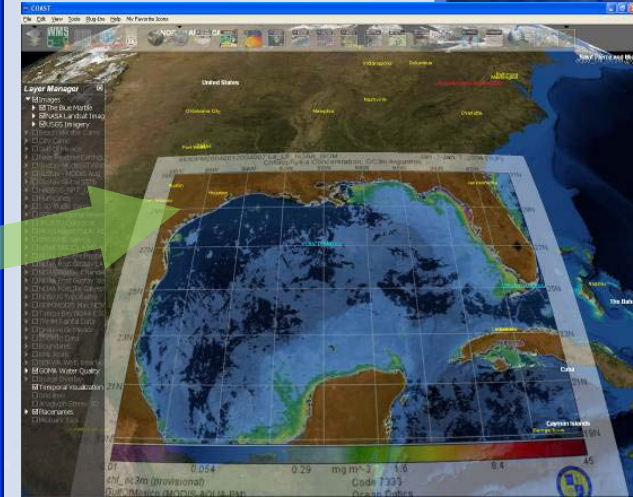
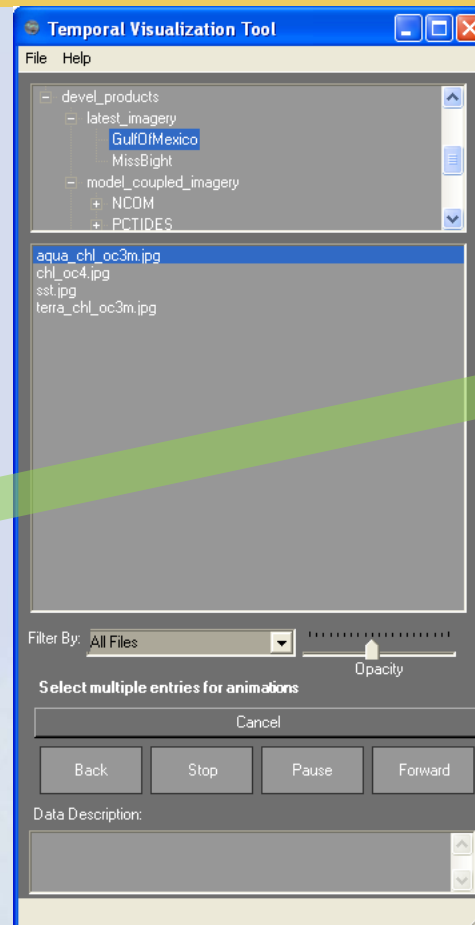
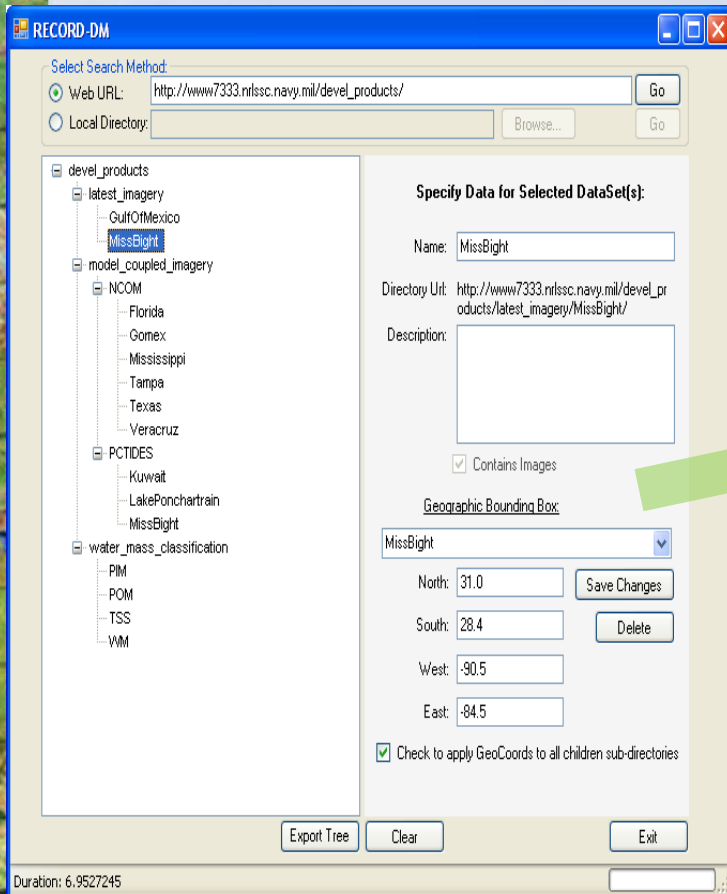
# COAST 2.0: What's New in 2.0

- **Temporal Visualization Tool** enhancements for file input and animation
- **RECORD-DM** tool enhancements for local and FTP directory mapping
- **Import Data Tool**<sup>1</sup> – Simpler, more powerful
- **Add Points Tool**<sup>2</sup> – Import or digitize point data

<sup>1</sup> Modified from elements of Image Overlay plugin by Bjorn Reppen

<sup>2</sup> Modified from Favorite Icons plugin by D. Hill, C. Zimmerman, J. Zoehrer

- Added local and FTP search capability to RECORD-DM data mapping tool
- Added load local file capability to TVT
- Allows creation and sharing of TVT temporal image playback files



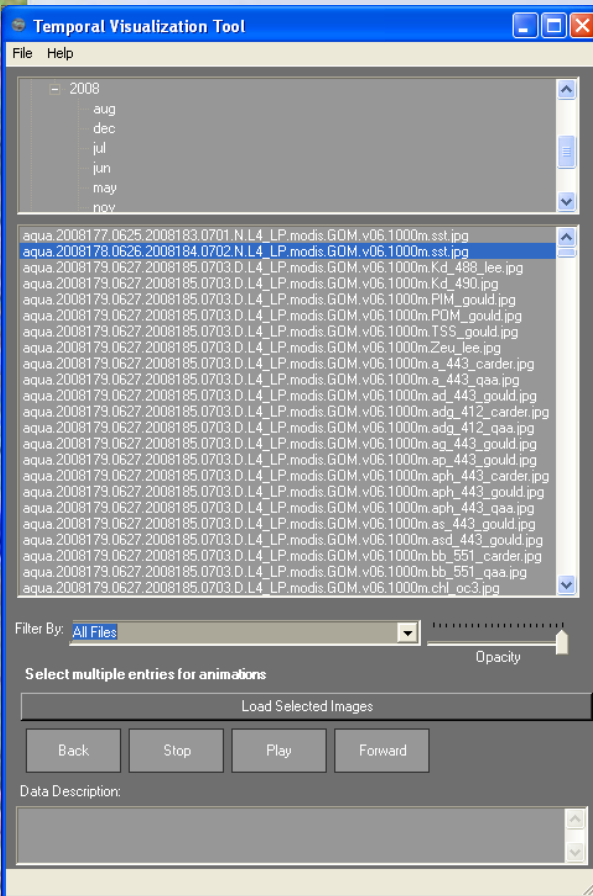
# COAST 2.0: RECORD-DM Tool and TVT



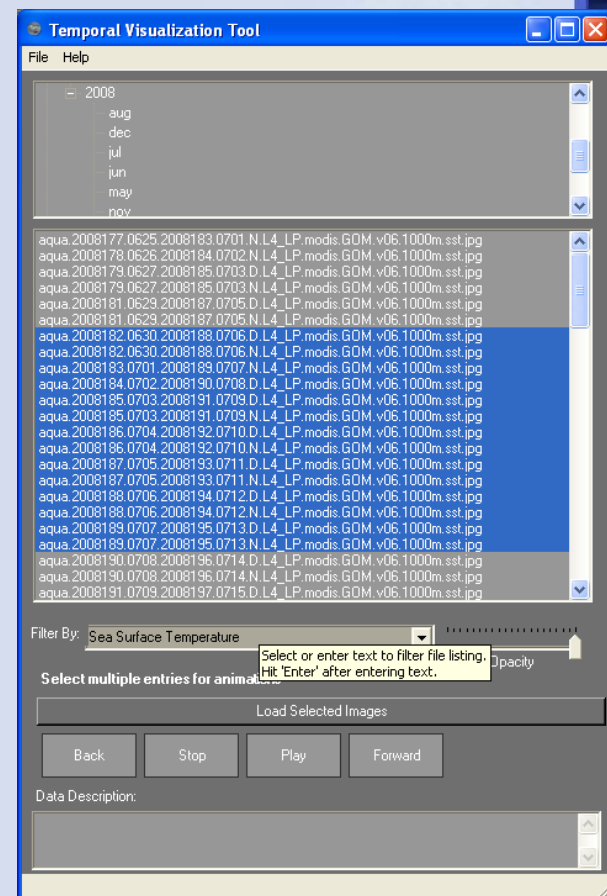
National Aeronautics and Space Administration

## Recursive Online Remote Directory-Data Mapper / Temporal Visualization Tool

- Added local and FTP search capability to RECORD-DM data mapping tool
- Added load local file capability to TVT
- Allows creation and sharing of TVT temporal image playback files



- Directory tree listing for selection
- “Filter by” common coastal science data types
- VCR-style controls for freeze frame review
- Current frame file name listed at top of screen
- Load other directory tree definition files through file menu
- User allowed to multi-select and sequential animate



# COAST 2.0: RECORD-DM Tool and TVT



National Aeronautics and Space Administration

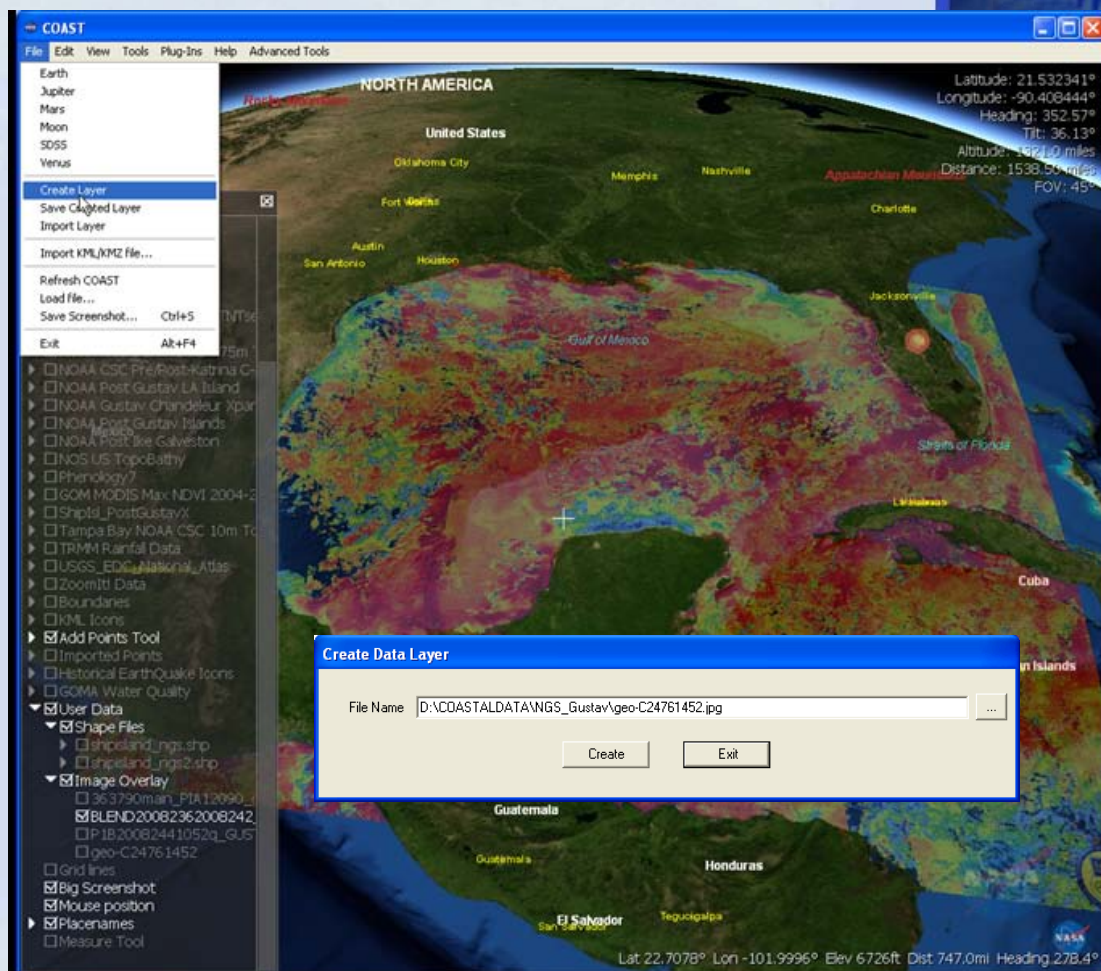
## Recursive Online Remote Directory-Data Mapper/Temporal Visualization Tool





## Import Data Tool: Interface Integration

- Combining some elements of previous Image Overlay<sup>1</sup>, Shapefile Import<sup>2</sup>, and Layer save/creation<sup>3</sup> plugins
- Will allow users more simplified ability for localized/personalized data integration and sharing
- Capability to import TIF, PNG, JPG, GIF with or without world file
- Rubber sheet placement of non-georeferenced imagery enabled



<sup>1</sup> Original contributed by Bjorn Reppen, included in WW 1.4; <sup>2</sup> limited use in WW 1.4 ; <sup>3</sup> inspired by Johann Zoehrer



## Layer Manager

- ▶  Hurricanes
- ▶  I-10 Traffic Cams
- ▶  GOMA Regional Viewers
- ▶  IFL/ BYU Quickscat
- ▶  MCD45
- ▶  MicroImages Public Atlas
- ▶  NOAA Service
- ▶  NOAA NGDC LA-MS-AL
- ▶  NOAA CSC Pre/Post-Ka
- ▶  NOAA Post Gustav LA Is
- ▶  NOAA Gustav Chandele
- ▶  NOAA Post Gustav Islar
- ▶  NOAA Post Ike Galvesto
- ▶  NOS US TopoBathy
- ▶  NV Multi Spec
- ▶  NVmulti\_half
- ▶  Phenology7
- ▶  GOM MODIS Max NDVI
- ▶  ShipIsl\_PostGustavX
- ▶  Tampa Bay NOAA CSC
- ▶  TRMM Rainfall Data
- ▶  Hypoxia
- ▶  ZoomIt! Data
- ▶  Boundaries
- ▶  KML Icons
- ▶  Whiteboard
- ▶  Add Points Tool
- ▶  Imported Points
- ▶  User Data
- ▶  Grid Lines
- ▶  Measure Tool
- ▶  Measure Area
- ▶  Anaglyph Stereo 3D
- ▶  Mouse position
- ▶  Placenames

NORTH AMERICA

Gulf of Mexico

Mexico

Cayman Islands

Belize

Guatemala Honduras

El Salvador Nicaragua

Costa Rica

Rocky Mountains

Cascades

Appalachian Mountains

United States

Memphis

Fort Worth

Austin

Houston

Jackson

San Antonio

The Bahamas

Mexico

Jamaica

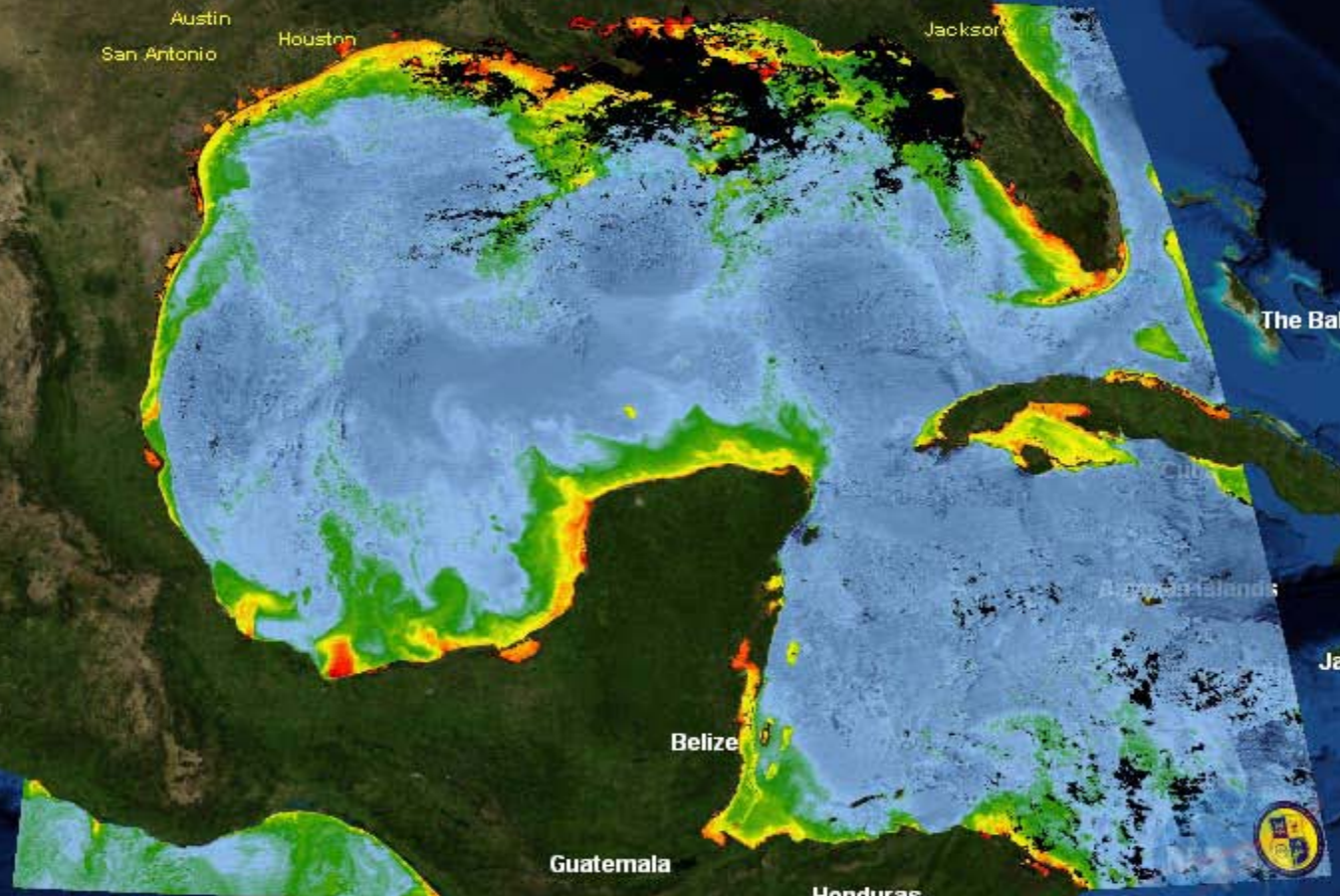
Belize

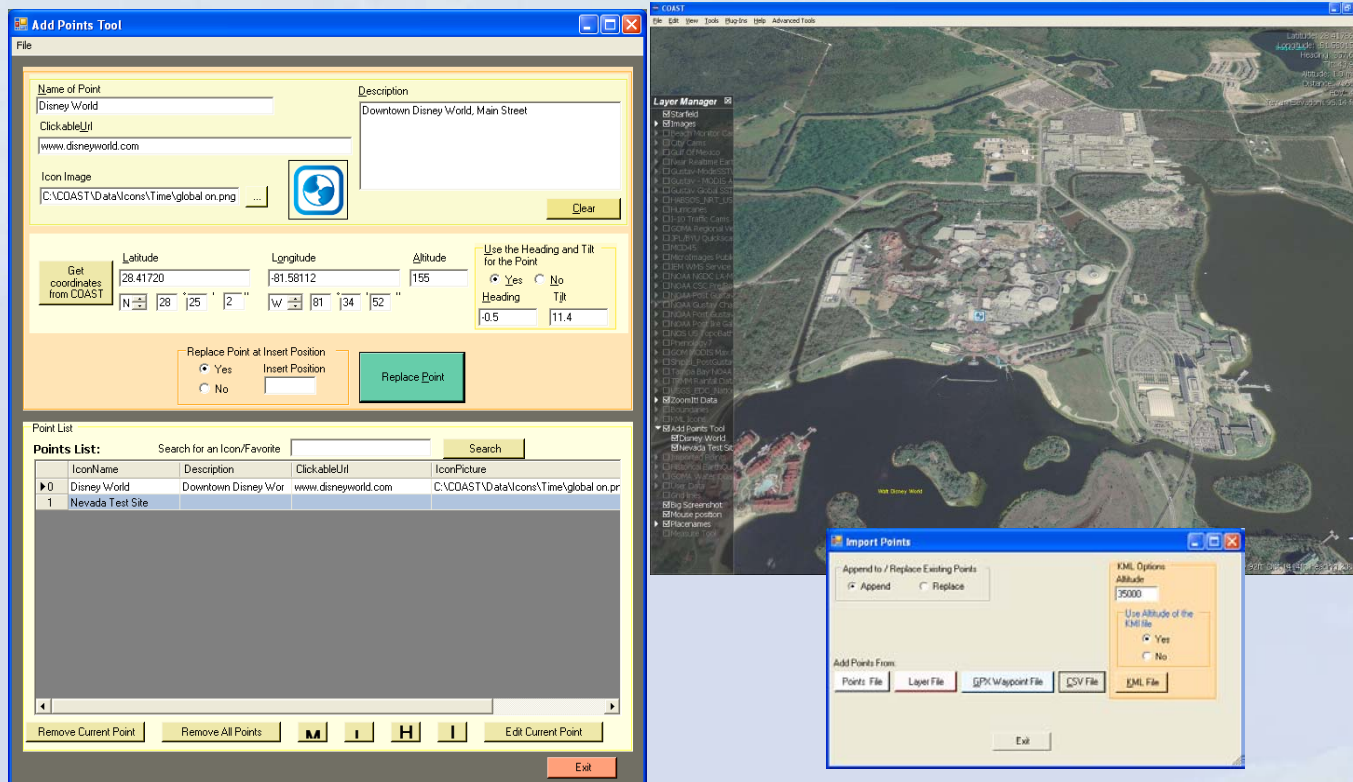
Guatemala

Honduras

Layer Manager

- NOAA Post Gustav Islar
- NOAA Post Ike Galvesto
- NOS-US TopoBathy
- NV Multi Spec
- NVmult\_half
- Phenology7
- GOM MODIS Max NDVI
- ShipIsl\_PostGustavX
- Tampa Bay NOAA CSC
- TRMM Rainfall Data
- Hypoxia
- ZoomItl Data
- Boundaries
- KML Icons
- Whiteboard
- Add Points Tool
- Imported Points
- User Data
  - Shape Files
    - cat.shp
    - catwgs84.shp
    - shipisland\_ngs.shp
    - shipisland\_ngs2.shp
- Image Overlay
  - 36.3790main\_PIA1
  - BLEND200823620
  - MODIS\_2008250\_
  - P1B.20082441052
  - BLEND200820820
- Grid lines
- Measure Tool
- Measure Area
- Anaglyph Stereo 3D
- Mouse position
- Placenames





- User has the capability to directly digitize points onto the COAST interface, to add metadata and links directly, and to save the added points out to several shareable formats for use by others
- Users also have the option of typing in Web link addresses and location descriptions, and of selecting a custom icon to be used as a marker
- Points can also be edited and replaced as needed
- Points in TXT, CSV, COAST XML layer, or GPX format can also be added by an Import Points function located under the File menu
- Point set may be saved as a point TXT, CSV, or PRN file, or as a COAST-compatible XML layer



NORTH AMERICA

Mexico

Guatemala Honduras

Belize

Cuba

Cayman Islands

Jamaica

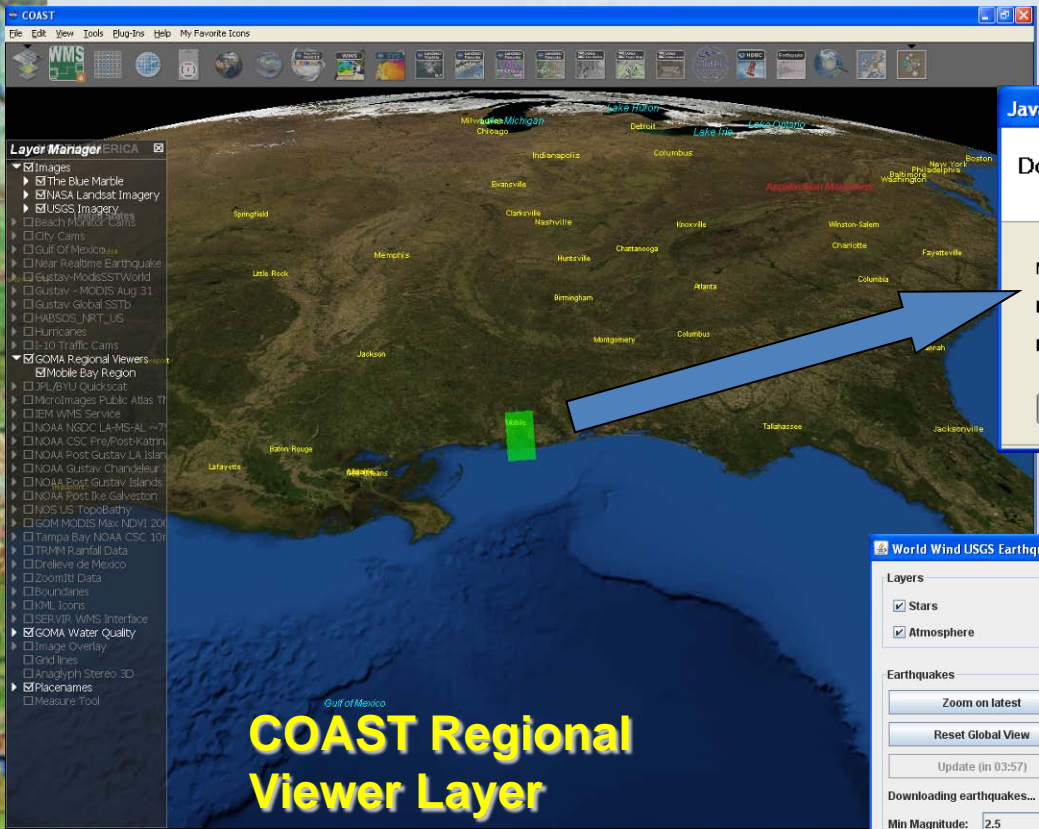
Gulf of Mexico

Straits of Florida

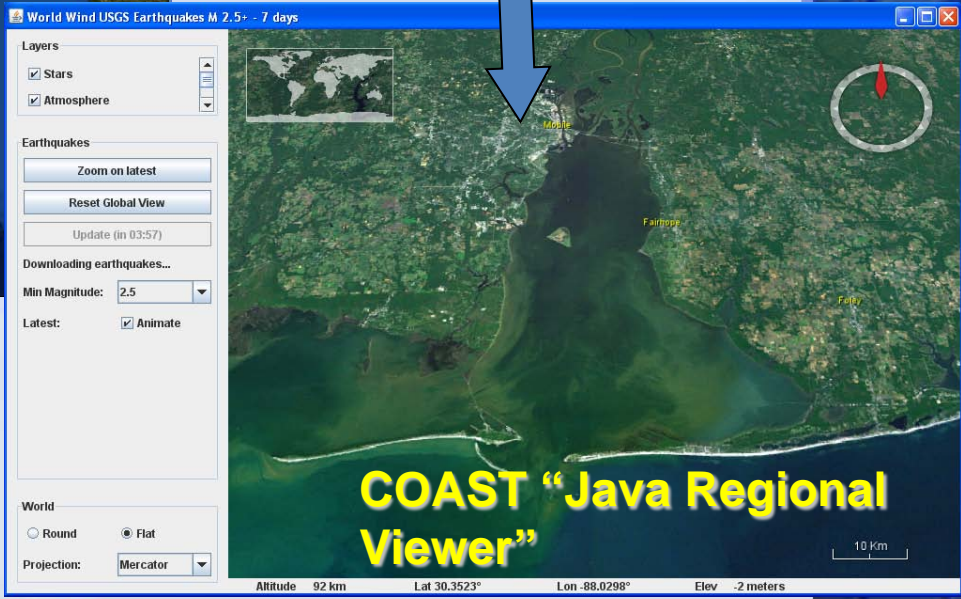
External Layer Manager

- Starfield
- Images
  - The Blue Marble
  - NASA Landsat Imagery
    - VirtualEarth Tiles
  - USGS Imagery
- Beach Monitor Cams
- City Cams
- Gulf Of Mexico
- Near Realtime Earthquake
- National Phenology
- Gustav-ModisSSTWorld
- Gustav - MODIS Aug 31
- Gustav Global SSTb
- HABSOS\_NRT\_US
- Hurricanes
- I-10 Traffic Cams
- GOMA Regional Viewers
- JPL/BYU Quickscat
- MCD45
- Microlmages Public Atlas TNTs
- IFM 100C Services

Opacity



## COAST Regional Viewer Layer



## COAST "Java Regional Viewer"

Integrated Regional Java Browser (prototype example)



# COAST

2.0

Questions?