

NASA/TM—2008-215264



# Lessons Learned From Atomic Oxygen Interaction With Spacecraft Materials in Low Earth Orbit

*Bruce A. Banks*  
*Alphaport, Inc., Cleveland, Ohio*

*Kim K. de Groh and Sharon K. Miller*  
*Glenn Research Center, Ohio*

*Deborah L. Waters*  
*ASRC Aerospace Corporation, Glenn Research Center, Cleveland, Ohio*

## NASA STI Program . . . in Profile

Since its founding, NASA has been dedicated to the advancement of aeronautics and space science. The NASA Scientific and Technical Information (STI) program plays a key part in helping NASA maintain this important role.

The NASA STI Program operates under the auspices of the Agency Chief Information Officer. It collects, organizes, provides for archiving, and disseminates NASA's STI. The NASA STI program provides access to the NASA Aeronautics and Space Database and its public interface, the NASA Technical Reports Server, thus providing one of the largest collections of aeronautical and space science STI in the world. Results are published in both non-NASA channels and by NASA in the NASA STI Report Series, which includes the following report types:

- **TECHNICAL PUBLICATION.** Reports of completed research or a major significant phase of research that present the results of NASA programs and include extensive data or theoretical analysis. Includes compilations of significant scientific and technical data and information deemed to be of continuing reference value. NASA counterpart of peer-reviewed formal professional papers but has less stringent limitations on manuscript length and extent of graphic presentations.
- **TECHNICAL MEMORANDUM.** Scientific and technical findings that are preliminary or of specialized interest, e.g., quick release reports, working papers, and bibliographies that contain minimal annotation. Does not contain extensive analysis.
- **CONTRACTOR REPORT.** Scientific and technical findings by NASA-sponsored contractors and grantees.
- **CONFERENCE PUBLICATION.** Collected

papers from scientific and technical conferences, symposia, seminars, or other meetings sponsored or cosponsored by NASA.

- **SPECIAL PUBLICATION.** Scientific, technical, or historical information from NASA programs, projects, and missions, often concerned with subjects having substantial public interest.
- **TECHNICAL TRANSLATION.** English-language translations of foreign scientific and technical material pertinent to NASA's mission.

Specialized services also include creating custom thesauri, building customized databases, organizing and publishing research results.

For more information about the NASA STI program, see the following:

- Access the NASA STI program home page at <http://www.sti.nasa.gov>
- E-mail your question via the Internet to [help@sti.nasa.gov](mailto:help@sti.nasa.gov)
- Fax your question to the NASA STI Help Desk at 301-621-0134
- Telephone the NASA STI Help Desk at 301-621-0390
- Write to:  
NASA Center for AeroSpace Information (CASI)  
7115 Standard Drive  
Hanover, MD 21076-1320



# Lessons Learned From Atomic Oxygen Interaction With Spacecraft Materials in Low Earth Orbit

*Bruce A. Banks*  
*Alphaport, Inc., Cleveland, Ohio*

*Kim K. de Groh and Sharon K. Miller*  
*Glenn Research Center, Ohio*

*Deborah L. Waters*  
*ASRC Aerospace Corporation, Glenn Research Center, Cleveland, Ohio*

Prepared for the  
Ninth International Space Conference on Protection of Materials and Structures  
From the Space Environment (ICPMSE-9)  
Toronto, Canada, May 20–23, 2008

National Aeronautics and  
Space Administration

Glenn Research Center  
Cleveland, Ohio 44135

*Level of Review:* This material has been technically reviewed by technical management.

Available from

NASA Center for Aerospace Information  
7115 Standard Drive  
Hanover, MD 21076-1320

National Technical Information Service  
5285 Port Royal Road  
Springfield, VA 22161

Available electronically at <http://gltrs.grc.nasa.gov>

# **Lessons Learned From Atomic Oxygen Interaction With Spacecraft Materials in Low Earth Orbit**

Bruce A. Banks  
Alphaport, Inc.  
Cleveland, Ohio 44135

Kim K. de Groh and Sharon K. Miller  
National Aeronautics and Space Administration  
Glenn Research Center  
Cleveland, Ohio 44135

Deborah L. Waters  
ASRC Aerospace Corporation  
Glenn Research Center  
Cleveland, Ohio 44135

## **Abstract**

There have been five Materials International Space Station Experiment (MISSE) passive experiment carriers (PECs) (MISSE 1-5) to date that have been launched, exposed in space on the exterior of International Space Station (ISS) and then returned to Earth for analysis. An additional four MISSE PECs (MISSE 6A, 6B, 7A, and 7B) are in various stages of completion. The PECs are two-sided suitcase to size sample carriers that are intended to provide information on the effects of the low Earth orbital environment on a wide variety of materials and components. As a result of post retrieval analyses of the retrieved MISSE 2 experiments and numerous prior space experiments, there have been valuable lessons learned and needs identified that are worthy of being documented so that planning, design, and analysis of future space environment experiments can benefit from the experience in order to maximize the knowledge gained. Some of the lessons learned involve the techniques, concepts, and issues associated with measuring atomic oxygen erosion yields. These are presented along with several issues to be considered when designing experiments, such as the uncertainty in mission duration, scattering and contamination effects on results, and the accuracy of measuring atomic oxygen erosion.

## **Introduction**

This paper represents a collection of lessons learned with respect to atomic oxygen interactions resulting from a variety of space experiments, as well as retrieved spacecraft materials and components from NASA's Long Duration Exposure Facility (LDEF), NASA's Evaluation of Oxygen Interactions with Materials-3 (EOIM-3) experiment, the Russian Space Station Mir, NASA's Materials International Space Station Experiment 2 (MISSE 2), Japanese Aerospace Exploration Agency's (JAXA) Service Module/Micro-Particles Capturer & Space Environment Exposure Device (SM/MPAC & SEED) ISS Experiment, and the Hubble Space Telescope (HST). The collective experiences from these low Earth orbital flights provide useful considerations for those who plan future experiments that involve atomic oxygen interaction with materials. The objective of this paper is to explain and capture these experiences to benefit the quality of future experiments.

## Lessons Learned

### Written Instructions and Procedures

Written instructions and procedures used for mounting and assembly of space flight hardware are almost always required but occasionally glossed over by those who are tasked with final installation of hardware that they are not familiar with. It is very difficult to actually know who will be performing such tasks to be able to properly brief them. An example of this is the author's experience regarding an experiment on EOIM-3 involving a pinhole camera. The cover on the experiment contained a small hole which was to act as a lens for the camera. A written instruction was provided in the installation instructions for the flight hardware with a warning to "not remove the cover of the Pin Hole Camera which contains the pinhole," however, post-flight inspection of the Shuttle cargo bay containing the experiment revealed that the cover was, in fact, removed prior to flight. When the flight hardware was removed from the Shuttle bay the cover for the Pin Hole Camera was again attached to the experiment, hence one might have thought it was on during flight. The experiment was a total failure as a result. Thus, sometimes, installations and removals are performed on the basis of what seems logical as opposed to reading instructions. High resolution images of experiments can sometimes be taken just after being launched which may contribute to validating proper installation. Also pictures taken at various time intervals can contribute to valuable information as to experiment function and materials degradation.

The lesson learned is that it is important to verify and witness that instructions and procedures are properly followed.

### Duration of Mission Estimates

Space experiments that involve retrieval of experiments frequently are much longer than initially planned due to a variety of factors that cannot be accurately predicted at the time the experiments are being developed. Table I lists the planned and actual mission durations for four missions in which experiment retrievals were accomplished (refs. 1 to 4). The average mission was a factor of 2.63 longer than initially planned.

TABLE I.—COMPARISON OF PLANNED AND ACTUAL MISSION DURATION

Mission	Planned duration, year	Actual duration, year	Ratio of actual/planned
LDEF	1	5.75	5.75
EURECA	0.83	0.89	1.07
MISSE 1-2	1 -1.5	3.95	2.64
MISSE 3-4	1	1.04	1.04

For NASA Glenn Research Center's MISSE 2 Polymer Erosion and Contamination Experiment (PEACE), the principle investigators designed the experiment so that the thickness of the samples used for atomic oxygen erosion yield testing were a factor of 3 thicker than what was needed to survive the original planned mission duration (1 year) based on estimated erosion yields. This procedure resulted in 85 percent of the material samples surviving the mission which was 4 times longer than initially planned (ref. 5).

The lesson learned is to design experiments for surviving a considerably longer duration (3+ times) than the planned mission duration, to ensure that meaningful results will be obtained even if the mission is factors longer than planned. For example, stack multiple layers of thin film polymers instead of flying a single layer.

## Silicone Contamination Sources and Consequences

Silicones which have not been vacuum stripped frequently contain short chain molecules which are volatile and are readily transported onto neighboring surfaces. When these contaminated spacecraft surfaces are exposed to atomic oxygen in low Earth orbit (LEO) the silicones oxidize to form silicates. There is also a tendency to trap hydrocarbons on the surface during the silicate formation. The resulting deposit can form an atomic oxygen protective coating that can darken as a result of solar radiation exposure. Evidence of the consequence of silicone contamination was clearly shown on selected samples flown on LDEF as shown in figure 1 where several samples liberated volatile silicones.

In figure 1, some of the volatile silicones formed deposits on the sample holder plate and subsequently became oxidized by atomic oxygen in areas where the surface was not shadowed from atomic oxygen arrival by the samples. The oxides are silicates that stay fixed on the surface only to darken in the ultraviolet solar illumination. Where the silicone volatiles deposit and are not exposed to atomic oxygen, they gradually re-evaporate and no darkening results (hence the light boundary to the right of the samples, shown in the enlarged photo area). These silicate deposits can also shield other samples from atomic oxygen attack, which can adversely alter the outcome of the experiment.

In November of 1997 Russian cosmonauts removed and retrieved a non-articulating foldable panel solar array from the Mir core module after 10.4 years in LEO and returned it for an international cooperative analysis (refs. 6 and 7). The solar array panels included a clad structure of solar cells, fiber glass scrim, cover glasses, optical solar reflectors and an open weave organic fabric coated with BF-4 adhesive. Silicone adhesives and thread sutures were used to clad the solar array structure together. Over time, volatile silicones evolved from thread suture holes surrounding the solar cells on both sides of the solar array. Figure 2 shows photographs of the resulting silica deposits on the front and back of Mir solar cells resulting from atomic oxygen oxidization of the silicones that had been transported in the gaseous phase onto neighboring surfaces. The thick contamination appears as a white diffuse deposit.

Although the solar array did not significantly degrade in performance from the silicate contamination, there was significant darkening of the optical solar reflector surfaces and neighboring thermal control white paint surfaces. This solar array technology was also used for the Russian supplied solar array for the ISS. Thus, silicone evolution onto surfaces and experiments on ISS from hardware such as this may result in contamination that could affect atomic oxygen erosion and solar absorptance.

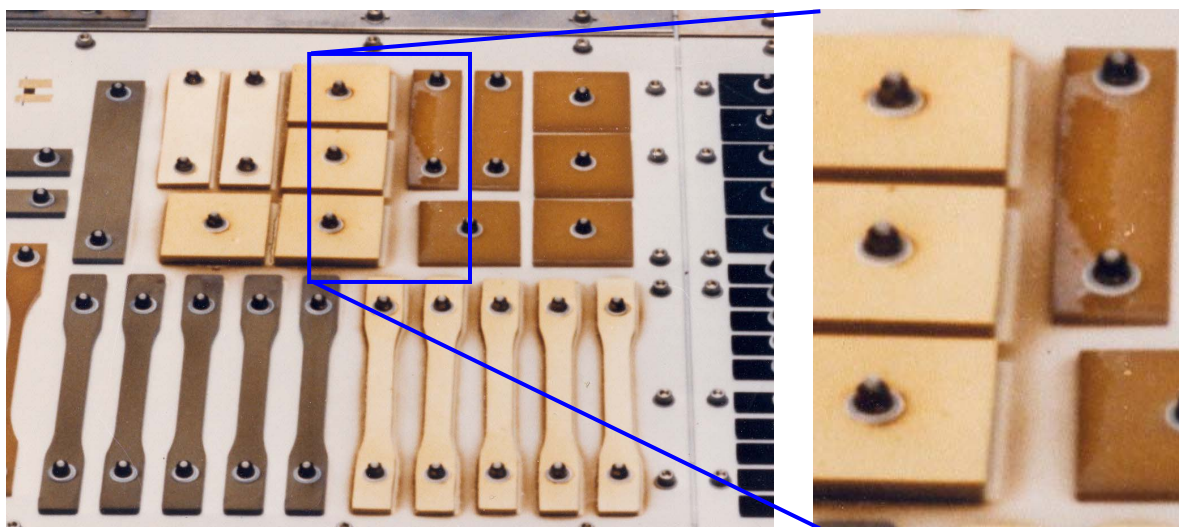


Figure 1.—Post flight photograph of Solar Array Materials Passive LDEF Experiment AO171 which exposed silicone RTV-511 samples (the lighter shade samples) to an atomic oxygen fluence of  $7.17 \times 10^{21}$  atoms/cm<sup>2</sup> with the atoms arriving from the upper left at an angle of 38° from normal incidence (ref. 2).

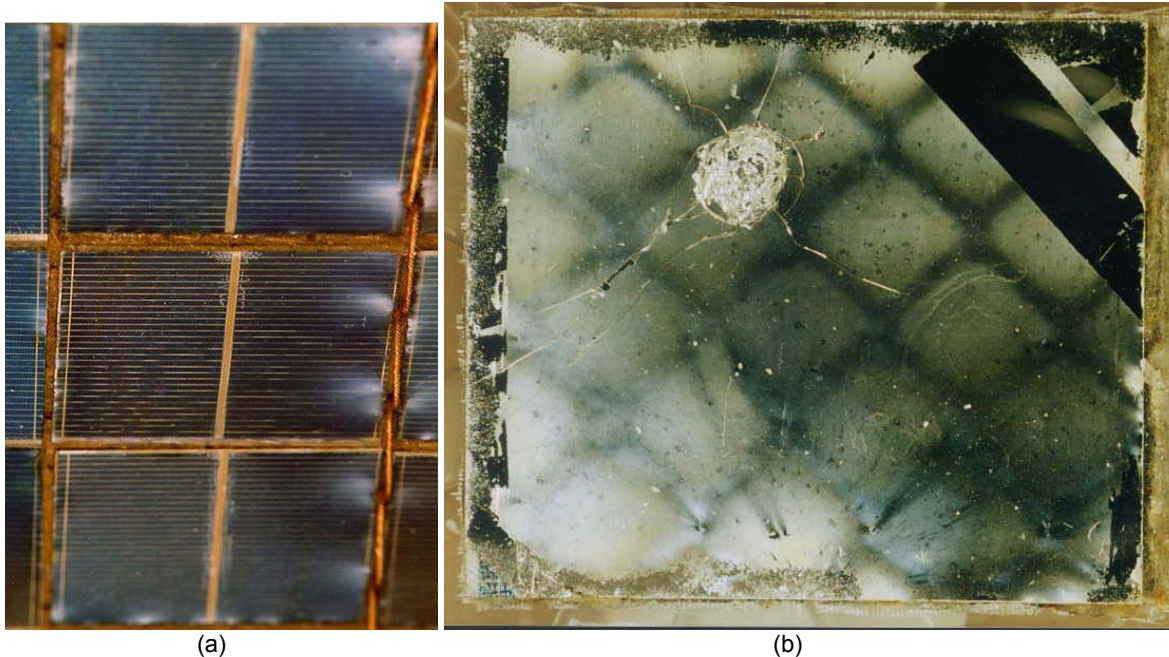


Figure 2.—Oxidized silicone contamination on solar cells from a MIR solar array retrieved after 10.4 years in LEO. (a) Oxidized silicone contamination near suture sites on the front surface of solar array up to 4.6 microns thick. (b) Oxidized silicone contamination on back surface solar reflector showing tape peeled area where contaminants between 1.06 and 1.24 microns thick were removed.

Table II shows the large variation in silicate contamination on surfaces from experiments placed at different locations on ISS. The MISSE PEC 2 had two orders of magnitude less contaminant thickness than the Japanese JAXA three experiment units (units 1 to 3) (refs. 8 and 9). This is probably due to differences in the total arrival of silicones based on each experiment's respective view of and distances to contaminant sources on ISS.

TABLE II.—SILICATE CONTAMINATION ON ISS EXPERIMENT SURFACES

Location	Silicate contaminant thickness, nm	Duration of exposure, years	Silicate contaminant thickness/years, nm
MISSE 2, Tray 1 ram facing	1.3 to 1.4	3.99	0.326 to 0.351
JAXA			
Unit 1	30.0	0.863	34.8
Unit 2	75.0	2.37	31.7
Unit 3	93.5	3.84	24.3

The lesson learned concerning silicone contamination is that one needs to be careful to avoid self contamination as well as be out of the view of sources of silicone to be sure that atomic oxygen does not produce silica deposits that can affect erosion yields or cause changes in solar absorptance.

### Scattering of Atomic Oxygen

It has long been suspected and predicted that a portion of the atomic oxygen arriving at a surface will scatter with partial accommodation from surfaces that the atomic oxygen reacts with, as well as from nonreactive surfaces (such as most metal oxides) (refs. 10 to 12). However, only recently, has quantifiable scattering data been available from the results of a small scattering chamber flown on MISSE 2. The experiment consisted of a 2.54 cm diameter scattering chamber containing a SiO<sub>2</sub> coated (on the RAM facing surface only) polyimide Kapton H disk with a 3.05 mm diameter aperture that allowed atomic



oxygen to enter the chamber and scatter off of an aluminum disk and then react with the Kapton on the bottom of the aperture disk. The bottom of the aperture disk also had many microscopic salt particles attached, which served as protective areas from scattered atomic oxygen attack (fig. 3). By washing off the salt particles and using profilometry, the amount of atomic oxygen erosion was measured as a function of ejection angle. Although cosine (or Lambertian) scattering had been expected, the results indicated that normal incident atomic oxygen scattered in a rather narrow angular distribution, at approximately 45° from normal. The scattered atomic oxygen produced a surprisingly high effective erosion yield which was 21.8 percent of that of RAM atomic oxygen for Kapton H polyimide as shown in figures 4 and 5.

The lesson learned is that atomic oxygen does not scatter in a cosine distribution or in a specular direction but instead at 45° from normal for aluminum. This means that one may need to be careful to consider scattered atomic oxygen erosion of materials depending upon the particular geometry of a spacecraft.

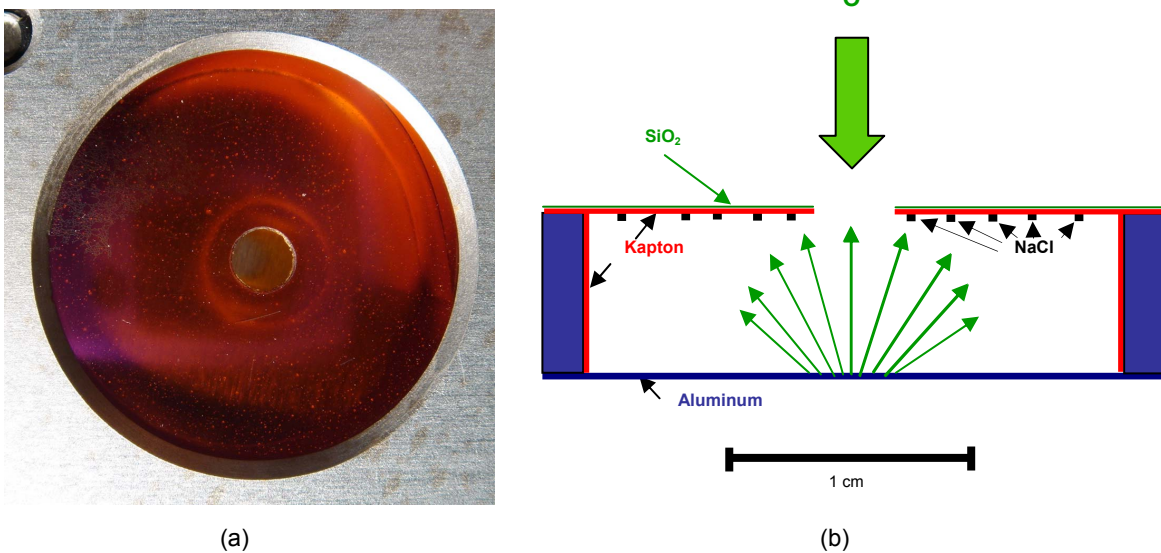


Figure 3.—MISSE-2 atomic oxygen scattering chamber experiment. (a) Post flight photograph. (b) Section view drawing.

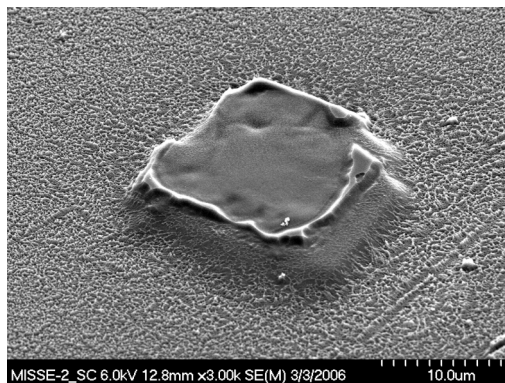


Figure 4.—Kapton H butte remaining at site of protective salt particle.

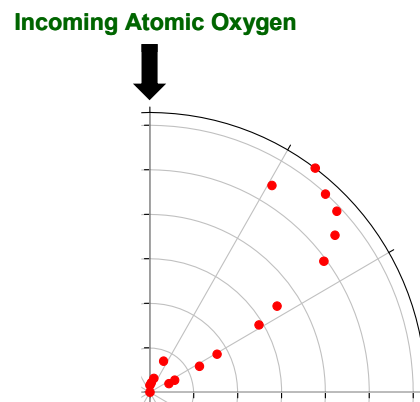


Figure 5.—Atomic oxygen erosion as a function of ejection angle.

## Sample Holder Geometry

The geometry of sample holders can influence the flux of atomic oxygen impinging upon samples. The typical MISSE sample trays with chamfered circular apertures can allow atomic oxygen to scatter from the chamfered surfaces onto the samples, thus locally increasing the flux impinging on the samples as shown in figure 6. A consequence of the perimeter scattered atomic oxygen is that the erosion around the sample perimeter is greater than in the central area. An example of this is shown in figure 7 for measurements of the MISSE 2 PEACE polyethylene oxide sample. If the atomic oxygen is arriving off normal, then there will be a variation in flux concentrations around the perimeter of each sample depending upon the scattering geometry. As can be seen in figure 8 two of the MISSE 2 samples peeled up from their lower left edge. Atomic oxygen was found to be arriving at  $8^\circ$  from normal and coming from the upper right in the photograph. Thus, there appears to be a greater flux concentration from atomic oxygen that impinges closer to perpendicular from the chamfered surface.

For the MISSE 2 trays with circular 2.54 cm diameter samples, the chamfer was at  $45^\circ$  and the lip was 0.763 mm thick. The maximum possible additional fluence for 2.54 in. diameter samples caused by atomic oxygen scattering would be  $\sim 15$  percent and, based on the previously discussed scattering chamber experiments, more likely  $\sim 3.3$  percent. Thus, the concern is not relating to a higher average fluence but rather of sample peeling and potential release prior to full erosion of samples, which could lead to incorrect erosion yields.

The whole problem of flux concentration and premature peeling could be eliminated if a reverse chamfer was used on the sample holders which would not allow scattering of atomic oxygen on to the surface of the samples. A potential disadvantage of this would be the loss of intimate contact at the edge of the sample for profiling purposes, which would not be a concern for mass loss measurements.

The lesson learned is that sample holder chamfers can be a source of flux concentrations, which can cut out the perimeter of samples, and in some cases cause the samples to roll up or potentially be released prior to the full erosion of the sample. The problem could be eliminated by using a reverse chamfer on the sample holder.

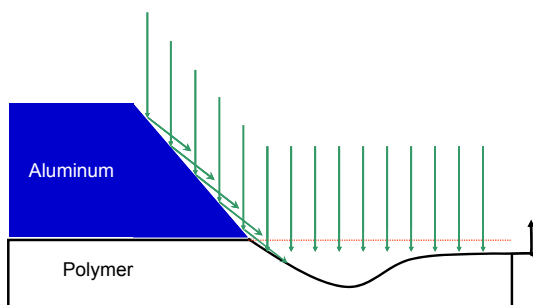


Figure 6.—Flux concentration from chamfered MISSE sample holders.

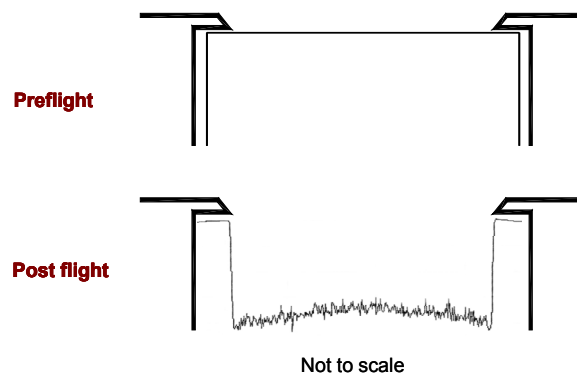


Figure 7.—Comparison of pre and post flight surface profiles for polyethylene oxide sample.

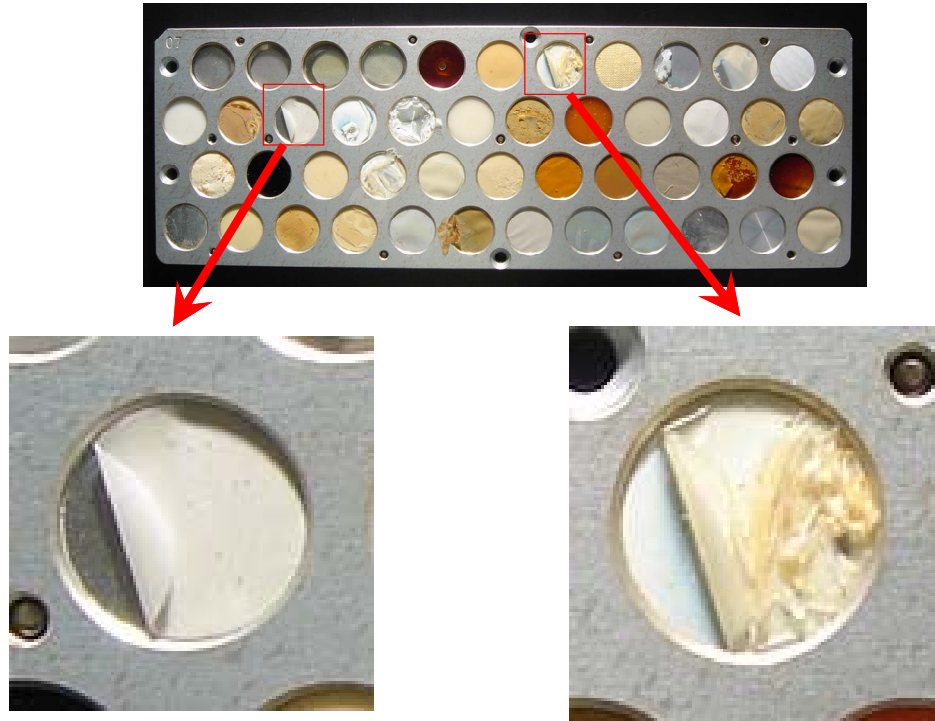


Figure 8.—MISSE 2 Tray 1 E5 showing 2 films peeling up on their lower-left side.

### **Documentation of Orientation of Samples With Respect to Atomic Oxygen RAM Direction**

Understanding the exact orientation of atomic oxygen arrival, or arrival of contaminants, can be very helpful in interpretation of environmental degradation results. Often exact information can be found if one documents the orientation of samples prior to removal from experiment trays. However, once the samples have been removed the opportunity to do this is lost. The exact orientation of the MISSE 2 atomic oxygen scattering chamber lid was documented. This allowed the determination that atomic oxygen had drilled holes that were  $8^\circ$  off of normal incidence and coming from the upper left of the figure 8 photograph (ref. 12). The knowledge of this off-angled atomic oxygen flux enabled an explanation for the preferential cutting out of thin samples on the lower left perimeter, as shown in figure 8, by atomic oxygen scattered from the lower left chamfer on the circular sample holders.

The lesson learned is to either mark samples for orientation or photo-document them to allow their orientation during flight to be known for post flight analysis.

### **Duration Between Retrieval and Tensile Testing**

The duration of time between retrieval of samples from space and ground laboratory tensile testing can have a significant impact on the elongation-to-failure for fluorinated ethylene propylene (FEP), and possibly other polymers, that have been exposed to the LEO environment. For example, samples of 0.127 mm thick silvered-FEP (Ag-FEP) retrieved from the wake side (rows 1 and 4) of the LDEF in January 1990, and aluminized-FEP (Al-FEP) from the HST retrieved in December 1993, indicated a significant reduction in elongation-to-failure as time progressed beyond the retrieval dates as shown in figure 9 (ref. 13). Samples were taken from near-neighbor locations in both cases.

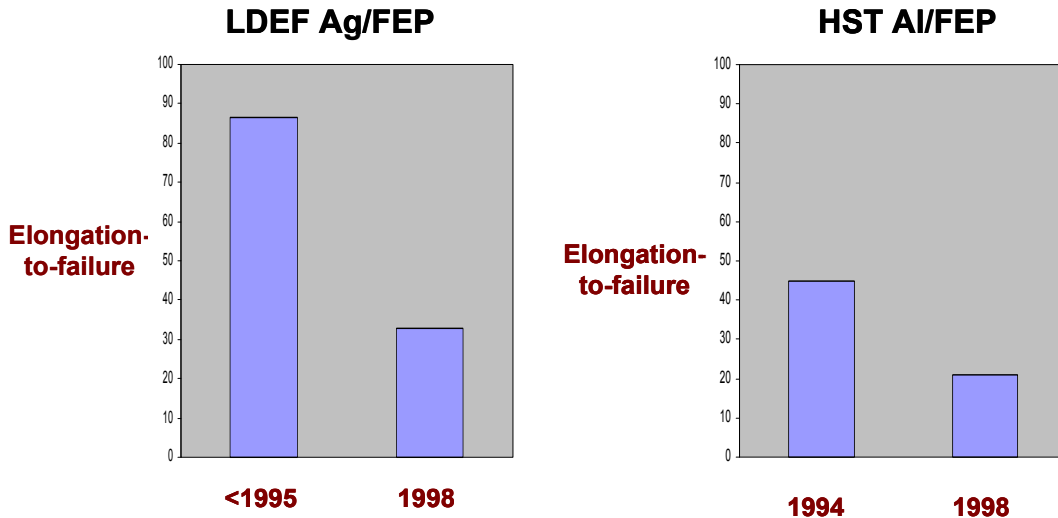


Figure 9.—Reduction in elongation-to-failure with time after retrieval for FEP (ref. 13).

Ground testing also indicated that storage of FEP samples in vacuum as opposed to air slows the rate of tensile property degradation (ref. 14). Polymer chain scission is believed to be responsible for the reduction in elongation-to-failure, and is initiated by the impact of energetic electrons and protons, combined with thermal exposure (ref. 15). What is unique is that the reduction in elongation-to-failure appears to continue long after the radiation damaging exposure occurs. The latent damage in fluoropolymers is thought to be caused by the formation and presence of long-lived free radicals (refs. 16 and 17). Storing samples in air or exposure to elevated temperatures increases degradation rates as compared to storage in vacuum or low temperature exposures (ref. 18).

The lesson learned is that to properly evaluate radiation induced tensile property damage in thin film polymers, it is important to store samples in vacuum and at low (room) temperatures, and to test them as soon as possible after retrieval. Use of multiple samples, stored and tested over time after retrieval, may allow back extrapolation to the in-space properties if the degradation profile follows an exponential decay curve.

### Erosion Depth Versus Mass Loss for Erosion Yield Measurement

Measurement of the atomic oxygen erosion yield of thin film polymers is complicated by the fact that cone and valley formation can result in erosion occurring in more than one stacked polymer sheet, as can be seen in figure 10 for the MISSE 2 polyetheretherketone (PEEK) sample stack. Figure 11 illustrates how the valleys between the cones can extend down into a lower sample layer. This situation makes erosion yield measurement based on profilometry erroneous because the erosion is on two separate layers.

Thus, dehydrated weight loss measurements can easily take this erosion complication into account as one would weigh the entire stack before and after flight. But, for erosion yield determination based on mass loss, the density needs to be accurately known. Dehydration of samples is also very important to avoid weight inaccuracies due to variations in the degree of absorbed water in the samples.

The lesson learned is to use dehydrated weight measurements for erosion yield measurement of stacked thin film polymers to avoid complications due to atomic oxygen texturing of samples.

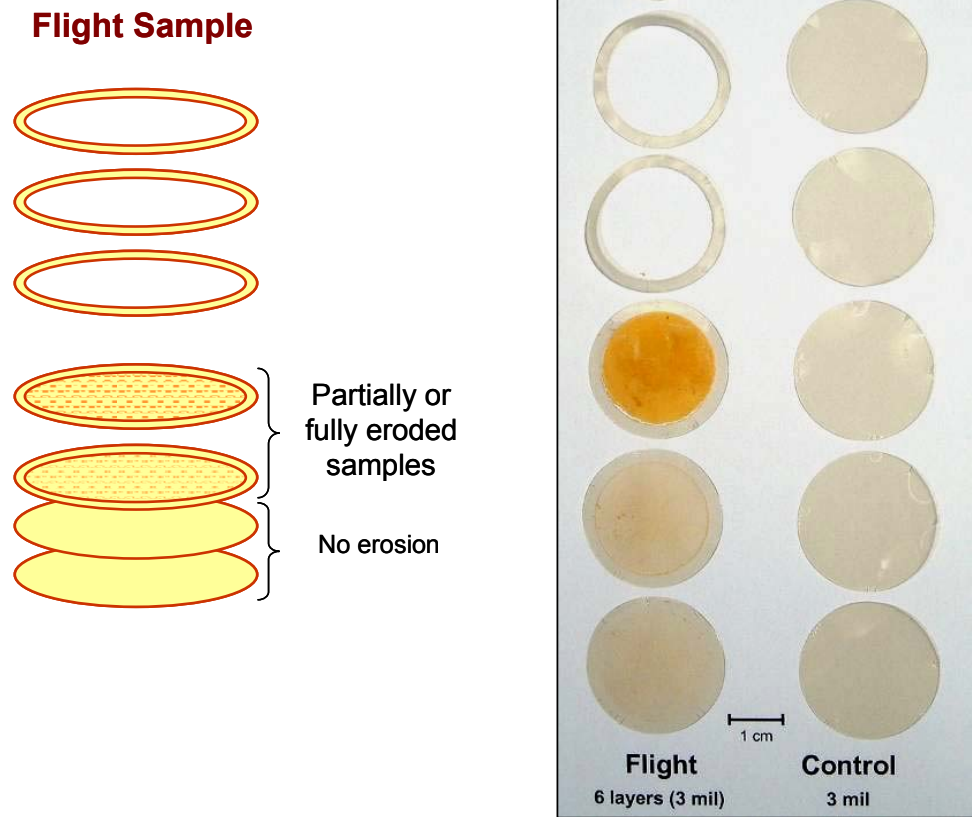


Figure 10.—MISSE-2 PEEK sample stack showing partial erosion of the 4th and 5th sample down from space exposed face of the stack.

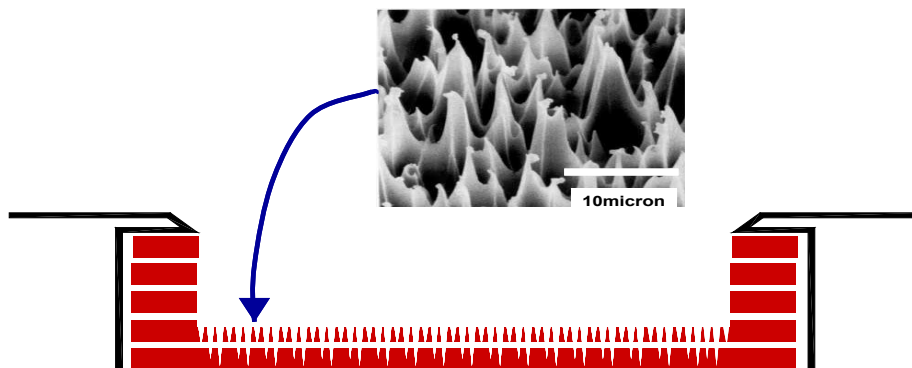


Figure 11.—Atomic oxygen texturing occurring in two layers of a flight stack of polymer samples.

## Polymer Ash Content Effects on Atomic Oxygen Erosion Yield

Most polymers contain some fraction of inorganic material. As atomic oxygen erodes a polymer that contains inorganic material, the resulting nonvolatile ash begins to accumulate on the eroded surface of the polymer. For high fluence missions, such as MISSE 2 PEACE polymers where the fluence was  $8.43 \times 10^{21}$  atoms/cm<sup>2</sup> (ref. 19), this can cause the atomic oxygen to gradually become somewhat shielded from reacting with the underlying polymer. As a result, it is believed that the ash content of polymers can have an influence on the erosion yield of a polymer. Table III lists the erosion yield for a few pairs of MISSE 2 PEACE polymers that had similar chemical structure. The data (ref. 19) shows that in spite of the pairs being very similar in chemical structure they had different erosion yields based largely on their ash content. The ash content was measured by simply exposing and weighing samples of the polymers (held in small aluminum foil cups) to atomic oxygen in an RF plasma asher until no further polymer remained.

TABLE III.—COMPARISON OF THE EROSION YIELDS OF TWO PAIRS OF CHEMICALLY SIMILAR POLYMERS HAVING DIFFERENT ASH CONTENTS

Polymer	Ash content, % by weight	MISSE 2 Atomic oxygen erosion yield, cm <sup>3</sup> /atom
Polyimide Kapton H	0.028	$3.0 \times 10^{-24}$
Polyimide Kapton HN	0.289	$2.81 \times 10^{-24}$
Nylon 6	0.112	$3.51 \times 10^{-24}$
Nylon 6,6	0.361	$1.80 \times 10^{-24}$

The lesson learned is that ash content in polymers can result in a reduction in erosion yield especially for high fluence missions.

## Summary

As a result of the data and experiences obtained from numerous space flight experiments and investigators, several lessons learned stand out as worthy of note for consideration by prudent investigators designing experiments for space environmental durability of materials. They include:

- (1) It is important to verify and witness that instructions and procedures are properly followed. Design your experiments to provide useful results even if the mission is factors longer than planned (hence plan for 3X or greater than the planned mission duration, stack multiple thin film samples together, etc.).
- (2) Be careful to avoid self contamination and to be out of the view of sources of silicone to reduce the possibility that volatile silicone deposits and atomic oxygen do not produce silica deposits that can affect erosion yields or cause changes in solar absorptance.
- (3) Atomic oxygen does not scatter in a cosine distribution or in a specular direction but instead at 45° from normal for aluminum. This means that one may need to be careful and take into consideration the geometry of the spacecraft that may lead to scattered atomic oxygen erosion of materials.
- (4) Sample holder chamfers can be a source of flux concentrations which can cut out the perimeter of thin samples, and in some cases cause the samples to roll up or potentially be released prior to the full erosion of the sample.
- (5) Mark samples for orientation or photo-document them to allow their orientation to be known for post flight analysis.
- (6) To properly evaluate radiation induced tensile property damage in thin film polymers, it is important to store samples in vacuum and at low or room temperatures and then to test them as soon as possible after retrieval.

- (7) Use dehydrated weight measurements for erosion yield measurement of stacked thin film polymers to avoid complications due to atomic oxygen texturing of samples.
- (8) The ash content in polymers can result in a reduction in erosion yield, especially for high fluence missions.

## References

1. Kinard, W., Personal communication.
2. Silverman, E., "Space Environmental Effects on Spacecraft LEO Materials Selection Guide," NASA Contractor Report 4661, August 1995.
3. Banks, B.A., Rutledge, S.K., and Cales, M., "Performance Characterization of EURECA Retroreflectors with Fluoropolymer-Filled SiO<sub>x</sub> Protective Coatings," Presented at the Third LDEF Post-Retrieval Symposium, NASA Langley Research Center, Williamsburg, VA, November 8–12, 1993.
4. Pippin, G., "Summary Status of MISSE-1 and MISSE-2 Experiments and Details of Estimated Environmental Exposures for MISSE-1 and MISSE-2," TECHNICAL OPERATIONS SUPPORT (TOPS) II, Delivery Order 0011F33615-01-D-5801-0011, Final Report for 24 June 2002–31 July 2006.
5. de Groh, K., Banks, B., McCarthy, C., Berger, L., and Roberts, L., "Analysis of the MISSE PEACE Polymers International Space Station Environmental Exposure Experiment," Paper presented at the 10th International Symposium on Materials in a Space Environment & 8th International Conference on Protection of Materials and Structures in a Space Environment, Collioure, France, June 19–23, 2006.
6. Visentine, J., Kinard, W., Pinkerton, R., Brinker, D., Scheiman, D., Banks, B., Zweiner, J., Albyn, K., Farrell, T., Hornung, S. and See, T., "Mir Solar Array Return Experiment," AIAA Paper 99-0100 presented at the 37th AIAA Aerospace Sciences Meeting, Reno, NV, Jan. 11–14, 1999.
7. Banks, B.A., deGroh, K.K., Rutledge, S.K., and Haytas, C.A., "Consequences of Atomic Oxygen Interaction with Silicone and Silicone Contamination on Surfaces in Low Earth Orbit," NASA TM 1999-209179, presented at the 44th Annual Meeting sponsored by the International Society for Optical Engineering, Denver, Colorado, July 21, 1999.
8. Dever, J., Miller, S., Sechkar, E., and Wittberg, T., "Preliminary Analysis of Polymer Film Thermal Control and Gossamer Materials Experiments on MISSE 1 and MISSE 2," Paper presented at the 2006 National Space & Missile Materials Symposium, Orlando, FL, 26–30 June, 2006.
9. Pankpo, C. Smith, K., Soares, C., Mikatarian, R. and Baba, N., "Induced Contamination onto JAXA's Micro-Particles Capturer and Space Environment Device—Comparison of Predictions and Measurements," Proc. Of the 10th ISMSE & 8th ICPMSE, Collure, France, 19–23 June 2006.
10. Banks, B., Lenczewski, M., and Demko, R., "Durability Issues for the Protection of Materials from Atomic Oxygen Attack in Low Earth Orbit," NASA/TM—2002-211830 August, 2002, Paper IAC-02-1.5.02 presented at the 53 International Astronautical Congress, The World Space Congress—2002, Houston TX, October 10–19, 2002.
11. Banks, B., Miller, S., de Groh, K., and Demko, R., "Scattered Atomic Oxygen Effects on Spacecraft Materials," Proceedings of the 9th International Symposium on Materials in a Space Environment, Noordwijk, The Netherlands, June 16–20, 2003, ESA SP-540, September 2003.
12. Banks, B.A., de Groh, K.K., and Miller S.K., "MISSE Scattered Atomic Oxygen Characterization Experiment," NASA/TM—2006-214355, May 2006, paper presented at the 2006 MISSE Post-Retrieval Conference sponsored by the Air Force Research Laboratory, Orlando, Florida, June 26–30, 2006. de Groh, Kim, K. and Gummow, J.D., "Effect of Air and Vacuum Storage on the Tensile Properties of X-ray Exposed Aluminized-FEP," NASA/TM—2000-21006, May 2000.
13. de Groh, K. and Morgana, M., "The Effect of Heating on the Degradation of Ground Laboratory and Space Irradiated Teflon FEP," NASA/TM—2002-211704, July 2002.

14. Townsend, J., Hansen, P., McClendon, M., deGroh, K., Banks, B., and Triolo, J., "Ground-Based Testing of Replacement Thermal Control Materials for the Hubble Space Telescope," Presented at the 37th AIAA Aerospace Sciences Meeting, Jan. 11–14, 1999, Reno, NV; *J. High Performance Polymers* 11 (1999), pp. 63–79.
15. Judeikis, H., Hedgpeth, H., and Siegel, S., "Free Radical Yields in Polytetrafluoroethylene as the Basis of a Radiation Dosimeter," *Radiation Research*, vol. 35, no. 2, August 1968, pp. 247–262.
16. Li, C., Yang, D., and He, S., "Effects of Proton Exposure on Aluminized Teflon FEP Film Degradation," *Nuclear Instruments and Methods in Physics Research Section B: Beam Interactions With Materials and Atoms* volume 234, issue 3, June 2005, pp. 249–255.
17. Dever, J., de Groh, K., Banks, B., and Townsend, J., "Effects of Radiation and Thermal Cycling on Teflon FEP," *J. High Perform. Polymers* 11 (1999), pp.123–140.
18. de Groh, K., Banks, B., McCarthy, Rucker, R., Roberts, L., and Berger, L., "MISSE PEACE Polymers Atomic Oxygen Erosion Results," NASA/TM—2006-214482, November 2006.



**REPORT DOCUMENTATION PAGE**

*Form Approved  
OMB No. 0704-0188*

The public reporting burden for this collection of information is estimated to average 1 hour per response, including the time for reviewing instructions, searching existing data sources, gathering and maintaining the data needed, and completing and reviewing the collection of information. Send comments regarding this burden estimate or any other aspect of this collection of information, including suggestions for reducing this burden, to Department of Defense, Washington Headquarters Services, Directorate for Information Operations and Reports (0704-0188), 1215 Jefferson Davis Highway, Suite 1204, Arlington, VA 22202-4302. Respondents should be aware that notwithstanding any other provision of law, no person shall be subject to any penalty for failing to comply with a collection of information if it does not display a currently valid OMB control number.  
PLEASE DO NOT RETURN YOUR FORM TO THE ABOVE ADDRESS.

<b>1. REPORT DATE (DD-MM-YYYY)</b> 01-07-2008		<b>2. REPORT TYPE</b> Technical Memorandum		<b>3. DATES COVERED (From - To)</b>	
<b>4. TITLE AND SUBTITLE</b> Lessons Learned From Atomic Oxygen Interaction With Spacecraft Materials in Low Earth Orbit				<b>5a. CONTRACT NUMBER</b>	
				<b>5b. GRANT NUMBER</b>	
				<b>5c. PROGRAM ELEMENT NUMBER</b>	
<b>6. AUTHOR(S)</b> Banks, Bruce, A.; de Groh, Kim, K.; Miller, Sharon, K.; Waters, Deborah, L.				<b>5d. PROJECT NUMBER</b>	
				<b>5e. TASK NUMBER</b>	
				<b>5f. WORK UNIT NUMBER</b> WBS 691982.01.03.0612.01	
<b>7. PERFORMING ORGANIZATION NAME(S) AND ADDRESS(ES)</b> National Aeronautics and Space Administration John H. Glenn Research Center at Lewis Field Cleveland, Ohio 44135-3191				<b>8. PERFORMING ORGANIZATION REPORT NUMBER</b> E-16531	
<b>9. SPONSORING/MONITORING AGENCY NAME(S) AND ADDRESS(ES)</b> National Aeronautics and Space Administration Washington, DC 20546-0001				<b>10. SPONSORING/MONITORS ACRONYM(S)</b> NASA	
				<b>11. SPONSORING/MONITORING REPORT NUMBER</b> NASA/TM-2008-215264	
<b>12. DISTRIBUTION/AVAILABILITY STATEMENT</b> Unclassified-Unlimited Subject Categories: 18, 23, and 25 Available electronically at <a href="http://gltrs.grc.nasa.gov">http://gltrs.grc.nasa.gov</a> This publication is available from the NASA Center for AeroSpace Information, 301-621-0390					
<b>13. SUPPLEMENTARY NOTES</b>					
<b>14. ABSTRACT</b> There have been five Materials International Space Station Experiment (MISSE) passive experiment carriers (PECs) (MISSE 1-5) to date that have been launched, exposed in space on the exterior of International Space Station (ISS) and then returned to Earth for analysis. An additional four MISSE PECs (MISSE 6A, 6B, 7A, and 7B) are in various stages of completion. The PECs are two-sided suitcase to size sample carriers that are intended to provide information on the effects of the low Earth orbital environment on a wide variety of materials and components. As a result of post retrieval analyses of the retrieved MISSE 2 experiments and numerous prior space experiments, there have been valuable lessons learned and needs identified that are worthy of being documented so that planning, design, and analysis of future space environment experiments can benefit from the experience in order to maximize the knowledge gained. Some of the lessons learned involve the techniques, concepts, and issues associated with measuring atomic oxygen erosion yields. These are presented along with several issues to be considered when designing experiments, such as the uncertainty in mission duration, scattering and contamination effects on results, and the accuracy of measuring atomic oxygen erosion.					
<b>15. SUBJECT TERMS</b> Atomix oxygen; Low Earth orbit; Spacecraft contamination					
<b>16. SECURITY CLASSIFICATION OF:</b>			<b>17. LIMITATION OF ABSTRACT</b>	<b>18. NUMBER OF PAGES</b>	<b>19a. NAME OF RESPONSIBLE PERSON</b>
<b>a. REPORT</b>	<b>b. ABSTRACT</b>	<b>c. THIS PAGE</b>			STI Help Desk (email:help@sti.nasa.gov)
U	U	U	UU	18	<b>19b. TELEPHONE NUMBER (include area code)</b> 301-621-0390



