

Lancet Oncology - Essay

Cancer risk from exposure to galactic cosmic rays - implications for human space exploration

Francis A. Cucinotta, Marco Durante

NASA Lyndon B. Johnson Space Center, Houston, TX, 77058, USA (F.A. Cucinotta PhD), and Department of Physics and INFN, University Federico II, 80126 Naples, Italy (M. Durante PhD).

Correspondence to Dr. F.A. Cucinotta, Lyndon B. Johnson Space Center, Houston, TX, 77058, USA - Tel +1 281 483 0968 - E-mail: Francis.A.Cucinotta@nasa.gov

Abstract:

Current space programs are shifting toward planetary exploration, and in particular towards human missions to the moon and Mars. However, space radiation is a major barrier to human exploration of the solar system because the biological effects of high-energy and charge (HZE) ions, which are the main contributors to radiation risks in deep space, are poorly understood. Predictions of the nature and magnitude of the risks posed by space radiation are subject to very large uncertainties. Great efforts have been dedicated worldwide in recent years toward a better understanding of the oncogenic potential of galactic cosmic rays. A review of the new results in this field will be presented here.

Introduction

Space exploration is a grand adventure for humankind with the potential for exciting discoveries that capture our imaginations and benefit society. The benefits from exploration¹ must be balanced with cost, safety and ethical concerns in deciding on acceptable levels of risks for astronauts or a no-go mission decision. The leading health concerns are exposure to galactic cosmic rays (GCR) and solar proton events, which present significant but poorly understood risks for carcinogenesis and degenerative diseases^{2,3}. Spaceflight in low Earth orbit, such as missions on the space shuttle and the International Space Station, are partially protected by the Earth's magnetic field and the solid shielding of the planet. The Apollo missions ventured away from the protection of the Earth but lasted only up to 12 days. Proposed missions to the moon in the next decade could last up to 200 days (**figure 1**) and a possible mission to Mars lasting as long as 3 years would lead to whole body doses around 1-sievert (Sv) or more⁴. However, the concepts used for risk projection on Earth, including the use of the dose unit Sv, are perhaps deceptive for GCR exposures. Efforts to improve the understanding of biological effects of densely ionizing heavy ions through biomedical research on cancer are the subject of this essay.

Space Radiation Environments and Risk Assessment

In space, astronauts are exposed to protons and high energy and charge (HZE) ions along with secondary radiation including neutrons and high linear energy transfer (LET) recoil nuclei, produced by nuclear reactions in spacecraft or tissue. The energy spectrum of the GCR peaks near 1,000 MeV/nucleon, and consequently these particles are so penetrating that shielding can only partially reduce the doses absorbed by the crew. Thick shielding poses obvious mass problems to spacecraft launch systems, and would only reduce the GCR effective dose by no more than 25% using aluminum, or about 35% using the more efficient polyethylene. Therefore, current shielding approaches cannot be considered a solution for the space radiation problem with the exception of solar proton events, which are effectively absorbed by shielding⁴.

In traveling to Mars, every cell nucleus within an astronaut would be traversed by a proton or secondary electron every few days, and an HZE ion about once per month⁵. Whole body doses of 1-2 mSv/day accumulate in interplanetary space, and approximately half this value on planetary surfaces⁶. The large ionization power of HZE ions makes them the major contributor to the risk, in spite of their lower cell nucleus hit frequency than protons. To undertake ground-based space radiation research, special facilities are needed to accelerate charged particles (from protons to iron) to relativistic energies. Only a few such facilities exist in the world, and NASA has invested in a new facility at Brookhaven National Laboratory on Long Island, NY (<http://www.bnl.gov/medical/NASA/>).

On Earth radiation workers or patients are most frequently exposed to low-LET γ - or X-rays. Epidemiological data, largely from the Atomic bomb survivors in Japan⁷, provides a basis for risk estimation for low-LET radiation. However, because no human data exist for protons and HZE ions, space risk estimates must rely entirely on model systems and biophysical considerations. Using standard methods for cancer risks projections based on the double detriment life table for an average population and a radiation induced cancer mortality rate scaled to the data from Atomic bomb survivors, risks for extended missions to the moon and the Mars exploration mission are shown in **Table I**. In this Table, 95% confidence intervals are reported that take into account the uncertainties in epidemiology data, space environments, and radiation quality and dose-rate effectiveness factors. Maximum acceptable levels of risks for astronauts are typically set at 3% fatal risk^{2,3}, but the large uncertainties in projections and the likelihood of other fatal or morbidity risks for degenerative diseases precludes a go/no-go decision for Mars exploration at this time.

Radiobiology of HZE Ions- Cellular Effect

A necessary step for reducing uncertainties in risk assessment are studies on the molecular pathways causative of cancer initiation and progression, and to extend these studies to learn how such pathways can be disrupted by HZE ions including both genetic and epigenetic modifications (**figure 2**). The goal of this research is to establish a more mechanistic approach to estimating of risk, and answering questions that include: can HZE effects be scaled from those of γ -rays, is risk linear with low dose-rate, and how

does individual radiation sensitivity impact risks for astronauts, a population selected for many factors related to excellence in health.

As a starting point we can consider the initial biophysical events caused by HZE tracks in cells and tissue^{6,8,9}. Energy deposition by HZE ions is highly heterogeneous with a localized contribution along the trajectory of each particle and lateral diffusion of energetic electrons (delta-rays) many microns from the ions path. These particles are therefore characterized by a high LET, however contain a low LET component. Biophysical models have shown that the energy deposition events by high LET radiation produce differential DNA lesions, including complex DNA breaks, and that there are qualitative differences between high- and low-LET radiation both in the induction and repair of DNA damage¹⁰⁻¹³. The number of DNA single strand breaks (SSB) and double strand breaks (DSB) produced by radiation varies little with radiation type^{8,10}; however for high-LET radiation, a higher fraction of DNA damages are complex, i.e. clusters containing mixtures of two or more of the various types of damages (SSB, DSB, etc.) within a localized region of DNA. Complex damage is uncommon for endogenous damage or low-LET radiation, and has been associated with the increased relative biological effectiveness (RBE) of densely ionizing radiation. The repair of DSB is known to occur through direct end-joining and homologous recombination processes. Indications are that for high-LET radiation, where complex DSB occur with high frequency, little repair occurs leading to cell death or that the mis-rejoining of un-repairable ends with other radiation-induced DSB lead to large DNA deletions and chromosome aberrations. While the high effectiveness in cell killing provides the rationale for heavy-ion cancer

therapy (hadrontherapy)¹⁴, residual damage in surviving cells is of concern for carcinogenesis.

Heavy charged particles are very effective at producing chromosomal exchanges with RBE values exceeding 30 in interphase (as visualized using premature chromosome condensation) and 10 at the first post-irradiation mitosis for energetic iron ions¹⁵. The detailed RBE versus LET relationship found for total exchanges is similar to earlier studies of mutation¹⁶ and in vitro neoplastic transformation¹⁷. For all of these endpoints, RBE peaks around 100-200 keV/ μ m, and then decreases at very high LET. However, the quality of chromosome damage is different when heavy ions are compared to sparsely ionizing radiation. Large differences in gene expression are observed between X-rays and HZE ions reflecting differences in damage response pathways^{18,19}. Qualitative differences in the type of gene mutations have also been reported²⁰. Novel multi-color fluorescence painting techniques of human chromosomes have clearly demonstrated that high-LET α -particles²¹ and iron ions^{22,23} induce many more complex-type chromosomal exchanges in human cells than low-LET radiation (**figure 3**). Most of these complex chromosomal rearrangements will ultimately lead to cell death. In fact, only a small fraction of the initial damage is transmitted in mice 2-4 months after the exposure to energetic iron ions²⁴. A low RBE for the induction of late chromosomal damage has also been measured in the progeny of human lymphocytes exposed in vitro to energetic iron ions, with the interesting exception of terminal deletions, that occurred with much higher frequency in the progeny of cells exposed to heavy ions compared to γ -rays²⁵.

The presence of chromosomes lacking telomeres in the progeny of cells exposed to heavy ions is particularly interesting. Sabatier *et al.*²⁶ found that rearrangements

involving telomere regions are associated with chromosomal instability in human fibroblasts many generations after exposure to accelerated heavy ions. Telomere dysfunction play a crucial role in initiating or sustaining genomic instability²⁷⁻²⁸, which is a major step in cancer progression. Heavy ion-induced effects on telomere stability has also been studied using siRNA knockdown for components of DNA-dependent protein kinase (DNA-PK) in human lymphoblasts²⁹. Differential results were found for γ -rays and high-LET radiation, with iron nuclei being much more effective in producing DSB-telomere fusions after knockdown of DNA-PK. Cells containing telomere-deficient chromosomes will either senesce, or undergo B/F/B cycles, promoting genetic instability. The fate of normal cells containing a single terminal deletion is not known, but it has been shown that the loss of a single telomere in cancer cells can result in instability in multiple chromosomes³⁰. These recent results suggest that telomere instability could be an important early event in the pathway to cancer induction by HZE nuclei.

Radiobiology of HZE Ions- Tissue Effects

The possibility of heavy ions causing unique tissue damage at low dose was noted after the Apollo astronauts' observed of light flashes during dark adaptation³¹. These visual sensations are related to the passage of HZE particles through the retina, or proton-induced nuclear interactions in the eye³². The micro-lesion concept considers stochastic tissue events that occur with HZE tracks and the possibility of unique types of tissue damage⁹. Micro-lesion formation is of especial concern for damage to the brain or central nervous system (CNS), where fully differentiated structures are present. However, it

could also play a role in increased effectiveness for HZE ions in highly structured tissues. CNS effects that have been observed in animal models include altered motor function or performance³³, accelerated striatal aging³⁴, late degradation of DNA³⁵, altered dopamine function³³, and neurodegeneration³⁶. The Casarett model^{37,35} predicts that the appearance of late degenerative effects to the CNS and other tissues could be advanced by many years after radiation exposure in what has been called “radiation accelerated aging”. This effect would have an increasing severity with increasing HZE fluence, and appears to be relevant in describing the increased incidence of cataracts observed in astronauts exposed to higher doses of space radiation³⁸.

Animal studies generally demonstrate that HZE nuclei have a higher carcinogenic effectiveness than low-LET radiation. RBE was measured in mice or rats for tumors of the skin³⁹ and of Harderian⁴⁰ or mammary⁴¹ gland, and reaches values as high as 25-40 at low doses. However, the risk and detriment of cancer is not fully characterized until the relationship between radiation quality and latency, where tumors appear earlier after high-LET irradiation⁴², is adequately described. Recent studies have debated the relative importance of DNA damage and mutation or extracellular matrix remodeling and other non-targeted effects as initiators of carcinogenesis⁴³. Tissue effects independent of DNA damage that have been associated with cancer initiation or progression include genomic instability⁴⁴, extracellular matrix remodeling⁴³, persistent inflammation⁴³, and oxidative damage⁴⁵. Other studies are exploring possible relationships between radiation and the activation of dormant tumors and modulation of angiogenesis⁴⁶.

The so-called bystander or non-targeted effects^{45,47,48} may have enormous consequences for space exploration. Non-targeted effects may lead to supra-linear dose-

response curve at low doses, perhaps reducing the effectiveness of spacecraft shielding, but it may also be protective by removing damaged cells from the organism. Both effects challenge the conventional linear no-threshold risk model assumption⁴⁹, which is currently adopted for radioprotection on Earth and in space. They also suggest important targets for biological countermeasures likely to be more effective than countermeasures targeting DNA damage⁵⁰.

Conclusions

Reducing the uncertainties in risk assessment required before a mission to Mars can be undertaken has led to a great number of investigations guided by molecular and genetic research on carcinogenesis and degenerative diseases. The large uncertainties in risk projection models will only be reduced by improving basic understanding of the underlying biological processes and their disruption by space radiation. There are unique aspects involved in this approach due to the specific challenges to biological systems presented by space radiation, especially HZE ions. It is unlikely that the radiation risk problem for space exploration will be solved by a simple countermeasure, such as shielding or radioprotective drugs. The risk will be understood and controlled only with more basic research in the field of cancer induction by charged particles.

Conflict of Interest

We declare no conflicts of interest.

Acknowledgments

We thank NASA Space Radiation Health Program for support to the research activity, and Kerry George for a critical reading of our manuscript.

References

1. White RJ, Averner M. Humans in space. *Nature* 2001; 409: 1115-8.
2. NCRP, *Radiation Protection Guidance for Activities in Low-Earth Orbit*. Report no. 132. NCRP, Bethesda, MD, 2000.
3. Cucinotta FA, Schimmerling W, Wilson JW, *et al*. Space radiation cancer risks and uncertainties for Mars missions. *Radiat Res* 2001; 156: 682-8.
4. Wilson JW, Thibeault SA, Cucinotta FA, *et al*. Issues in protection from galactic cosmic rays. *Radiat Environ Biophys* 1995; 34: 217-22.
5. Cucinotta FA, Nikjoo H, Goodhead DT. Comment on the effects of delta-rays on the number of particle-track transversals per cell in laboratory and space exposures. *Radiat Res* 1998; 150: 115-9.
6. Saganti PB, Cucinotta FA, Wilson JW, *et al*. Radiation climate map for analyzing risks to astronauts on the Mars surface from galactic cosmic rays. *Space Sci Rev* 2004; 110: 143-56.
7. Preston DL, Shimizu Y, Pierce DA, *et al*. Studies of mortality of atomic bomb survivors. Report 13: Solid cancer and noncancer disease mortality: 1950–1997. *Radiat Res* 2003; 160: 381–407.
8. Goodhead DT. Initial events in the cellular effects of ionizing radiations: clustered damage in DNA. *Int J Radiat Biol* 1994; 65: 7-17.
9. Todd P. Stochastics of HZE-induced microlesions. *Adv Space Res* 1989; 9: 31-4.

10. Blakely EA, Kronenberg A. Heavy-ion radiobiology: new approaches to delineate mechanisms underlying enhanced biological effectiveness. *Radiat Res* 1998; 150: S126-45.
11. Sutherland BM, Bennett PV, Sidorkina O, Laval J. Clustered DNA damages induced in isolated DNA and in human cells by low doses of ionizing radiation. *Proc Natl Acad Sci USA* 2000; 97: 103-8.
12. Gulston M, De Lara C, Jenner T, *et al.* Processing of clustered DNA damage generates additional DSB in mammalian cells post-irradiation. *Nucl Acids Res* 2004; 32:1602-9.
13. Rydberg B, Cooper B, Cooper PK, *et al.* Dose-dependent misrejoining of radiation-induced DNA double-strand breaks in human fibroblasts: experimental and theoretical study for high- and low-LET radiation. *Radiat Res* 2005; 163: 526-34.
14. Amaldi U, Kraft G. Radiotherapy with beams of carbon ions. *Rep Prog Phys* 2005; 68, 1861-82.
15. George K, Durante M, Willingham V, *et al.* Biological effectiveness of accelerated particles for the induction of chromosome damage measured in metaphase and interphase human lymphocytes. *Radiat Res* 2003; 160: 425-35.
16. Kiefer J, Mutagenic effects of heavy charged particles. *J Radiat Res* 2002; 43: S21-5.
17. Yang TCH, Craise LM, Mei MT, Tobias CA. Neoplastic cell transformation by heavy charged particles. *Radiat Res* 1985; 8: S177-87.
18. Ding L, Shingyoji M, Chen F, *et al.* Gene expression changes in normal human skin fibroblasts induced by HZE-particle radiation. *Radiat Res* 2005; 164: 523-6.
19. Chang PY, Bjornstad KA, Rosen CJ, *et al.* Effects of iron ions, protons and X rays on human lens cell differentiation. *Radiat Res* 2005; 164: 531-9.
20. Kronenberg A, Gauny S, Criddle K, *et al.* Heavy ion mutagenesis: linear energy transfer effects and genetic linkage. *Radiat Environ Biophys* 1995; 34: 73-8.
21. Anderson RM, Stevens DL, Goodhead DT. M-FISH analysis shows that complex chromosome aberrations induced by alpha-particle tracks are cumulative products of localized rearrangements. *Proc Natl Acad Sci USA*; 99: 12167-72.
22. Durante M, George K, Wu H, Cucinotta FA. Karyotypes of human lymphocytes exposed to high-energy iron ions. *Radiat Res* 2002; 158: 581-90.

23. Johannes C, Horstmann M, Durante M, *et al.* Chromosome intrachanges and interchanges detected by multicolor banding in lymphocytes: searching for clastogen signatures in the human genome. *Radiat Res* 2004; 161: 540-8.
24. Tucker JD, Marples B, Ramsey MJ, Lutze-Mann LH. Persistence of chromosome aberrations in mice acutely exposed to $^{56}\text{Fe}^{+26}$ ions. *Radiat Res* 2004; 161: 648-55.
25. Durante M, George K, Cucinotta FA. Chromosomes lacking telomeres are present in the progeny of human lymphocytes exposed to heavy ions. *Radiat Res* 2006; 165: 51-8.
26. Sabatier L, Dutrillaux B, Martin MB. Chromosomal instability. *Nature* 1992; 357: 548.
27. Maser RS, DePinho RA. Connecting chromosomes, crisis, and cancer. *Science* 2002; 297: 565-9.
28. Feldser DM, Hackett JA, Greider CW. Telomere dysfunction and the initiation of genome instability. *Nat Rev Cancer* 2003; 3: 623-7.
29. Zhang Q, Williams, ES, Askin K, *et al.* Suppression of DNA-PK by RNAi has different quantitative effects on telomere dysfunction and mutagenesis in human lymphoblasts treated with γ -rays or HZE particles. *Radiat Res* 2005; 164: 497-504.
30. Sabatier L, Ricoul M, Pottier G, Murnane JP. The loss of a single telomere can result in instability of multiple chromosomes in a human tumor cell line. *Mol Cancer Res* 2005; 3: 139-50.
31. Charman WN, Dennis JA, Fazio GG, Jelley JV. Visual sensations produced by single fast particles. *Nature* 1971; 230: 522-4.
32. Casolino M, Bidoli V, Morselli A, *et al.* Dual origins of light flashes seen in space. *Nature* 2003; 422: 680.
33. Rabin BM, Joseph JA, Shukitt-Hale B, McEwen J. Effects of exposure to heavy particles on a behavior mediated by the dopaminergic system. *Adv Space Res* 2000; 25: 2065-74.
34. Joseph JA, Hunt WA, Rabin BM, Dalton TK. Possible "accelerated striatal aging" induced by ^{56}Fe heavy particle irradiation: implications for manned space flights. *Radiat Res* 1992; 130: 88-95.
35. Lett JT, Williams GR. Effects of LET on the formation and fate of radiation damage to photoreceptor cell component of the rabbit retina: implications for the projected manned mission to Mars. In *Biological effects of Solar and Galactic*

Cosmic Radiation, Part A (C.E. Swenberg, G. Horneck, and E.G. Stassinopoulos, Eds.) 185-201, Plenum Press, NY, 1993.

36. Rola R, Sarrkissan V, Obenaus A, *et al.* High-LET radiation induced inflammation and persistent changes in markers of hippocampal neurogenesis. *Radiat Res* 2005; 165: 556-60.
37. Rubin P, Casarett GW. *Clinical Radiation Pathology*. Saunders, Philadelphia, 1968.
38. Cucinotta FA, Manuel FK, Jones J, *et al.* Space radiation and cataracts in astronauts. *Radiat Res* 2001; 156: 460-6.
39. Burns FJ, Jin Y, Koenig KL, Hosselet S. The low carcinogenicity of electron radiation relative to argon ions in rat skin. *Radiat Res* 1993; 135:178-88.
40. Alpen EL, Powers-Risius P, Curtis SB, DeGuzman R. Tumorigenic potential of high-Z, high-LET charged-particle radiations. *Radiat Res* 1993; 136: 382-91.
41. Dicello JF, Christian A, Cucinotta FA, *et al.* In vivo mammary tumorigenesis in the Sprague-Dawley rat and microdosimetric correlates. *Phys Med Biol* 2004; 49: 3817-30.
42. Fry RJM, Storer JB. External radiation carcinogenesis. *Adv Radiat Biol* 1987; 13: 31-91.
43. Barcellos-Hoff MH, Park C, Wright EG. Radiation and the microenvironment - tumorigenesis and therapy. *Nat Rev Cancer* 2005; 5: 867-75.
44. Park CC, Henshall-Powell RL, Erickson AC, *et al.* Ionizing radiation induces heritable disruption of epithelial cell interactions. *Proc Natl Acad Sci USA* 2003; 10728-33.
45. Mothersill C, Seymour CB. Radiation-induced bystander effects- implications for cancer. *Nat Rev Cancer* 2004; 4:158-64.
46. Folkman J, Watson K, Ingber D, Hanahan D. Induction of angiogenesis during the transition from hyperplasia to neoplasia. *Nature* 1989; 339 :58-61.
47. Prise KM, Schettino G, Folkard M, Held KD. New insights on cell death from radiation exposure. *Lancet Oncol* 2005; 6: 520-8.
48. Belyakov OV, Mitchell SA, Parikh D, *et al.* Biological effects in unirradiated human tissue induced by radiation damage up to 1 mm away. *Proc Natl Acad Sci USA* 2005; 102: 14203-8.

49. Brenner DJ, Doll R, Goodhead DT, *et al.* Cancer risks attributable to low doses of ionizing radiation: assessing what we really know. *Proc Natl Acad Sci USA* 2003; 100: 13761-6.
50. Coleman C, Stone HB, Moulder JE, Pellmar TC. Modulation of radiation injury. *Science* 2004; 304: 693-4.

Table 1. Calculations of effective doses, %Risk of death from fatal cancer, and 95% CI for lunar or Mars missions. Calculations are at solar minimum where GCR fluence is highest for a 5-g/cm² aluminum shield. The absorbed dose, D and Effective dose, E are averaged over tissues prominent for cancer risk², and competing causes of death are treated in the risk calculation, compressing the distribution of risk probabilities at larger values (>5%).

<i>Exploration mission</i>	<i>D, Gy</i>	<i>E, Sv</i>	<i>Fatal Risk(%)</i>	<i>95% CI</i>
Males (40 y)				
Lunar (180 d)	0.06	0.17	0.68	[0.20, 2.4]
Mars swingby (600 d)	0.37	1.03	4.0	[1.0, 13.5]
Mars exploration (1000 d)	0.42	1.07	4.2	[1.3, 13.6]
Females (40 y)				
Lunar (180 d)	0.06	0.17	0.82	[0.24, 3.0]
Mars swingby (600 d)	0.37	1.03	4.9	[1.4, 16.2]
Mars exploration (1000 d)	0.42	1.07	5.1	[1.6, 16.4]

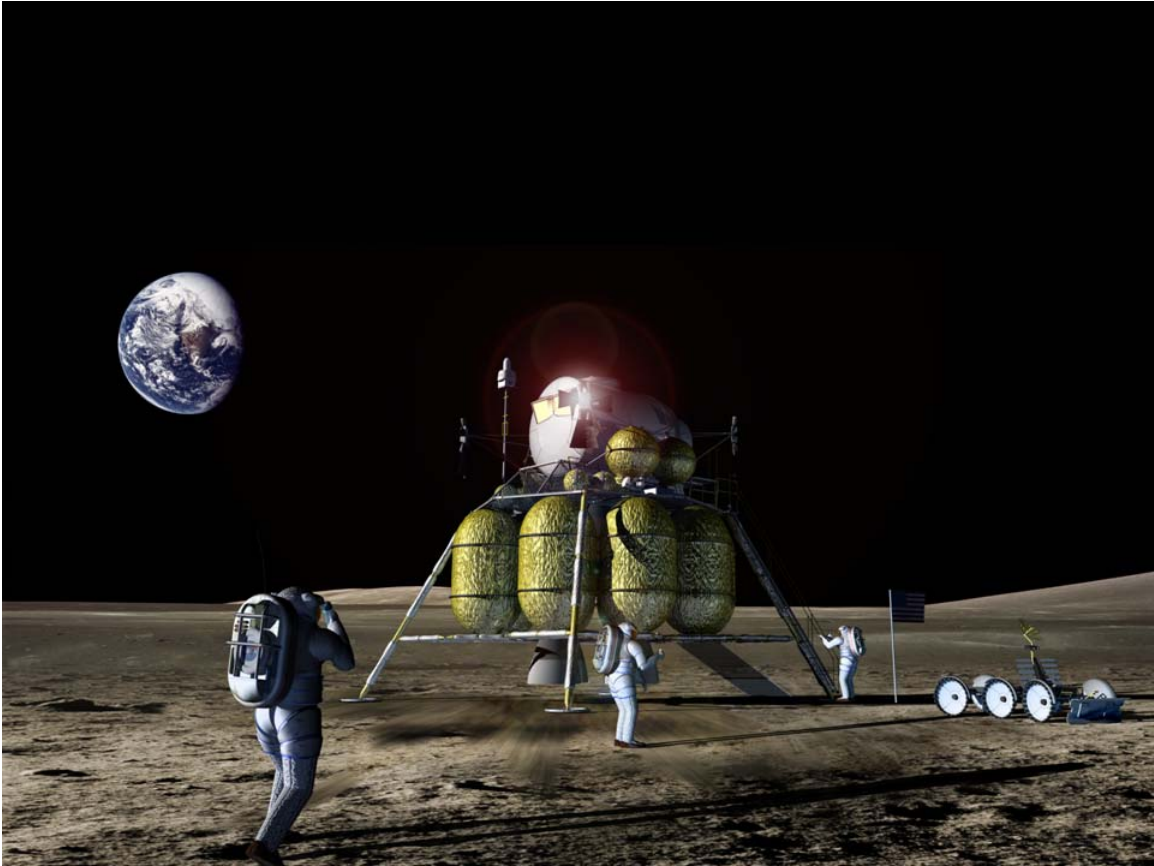


Figure 1. Concept of a future moon landing. According to the new Vision for Space Exploration (January 2004), NASA plans to return on the moon within the year 2020. The current project anticipates 4-6 crewmembers performing Lunar surface operations for 60-180 days. The Earth-moon cruise lasts approximately 4 days. (Picture credit NASA/John Frassanito and associates).

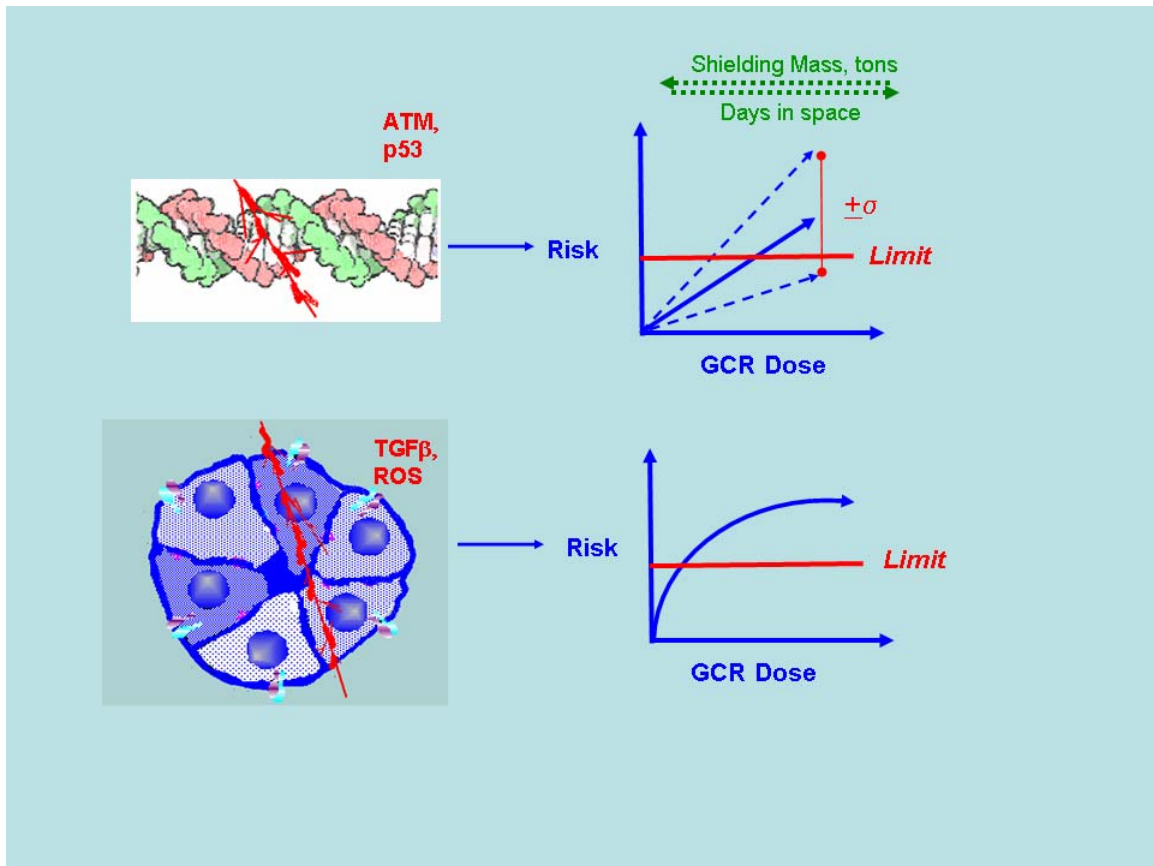


Figure 2. Schematic of importance of uncovering basic mechanisms of cancer induction by galactic cosmic radiation. Determining role of DNA damage vs. non-targeted effects has large implications for radiation shielding, mission duration, and in approaches to design of biological countermeasures. In DNA-target model, a linear response is expected with research focus on slope of response as function of radiation quality and radiation sensitivity. In non-targeted model, shielding is ineffective and distinct target for biological countermeasures are pursued.

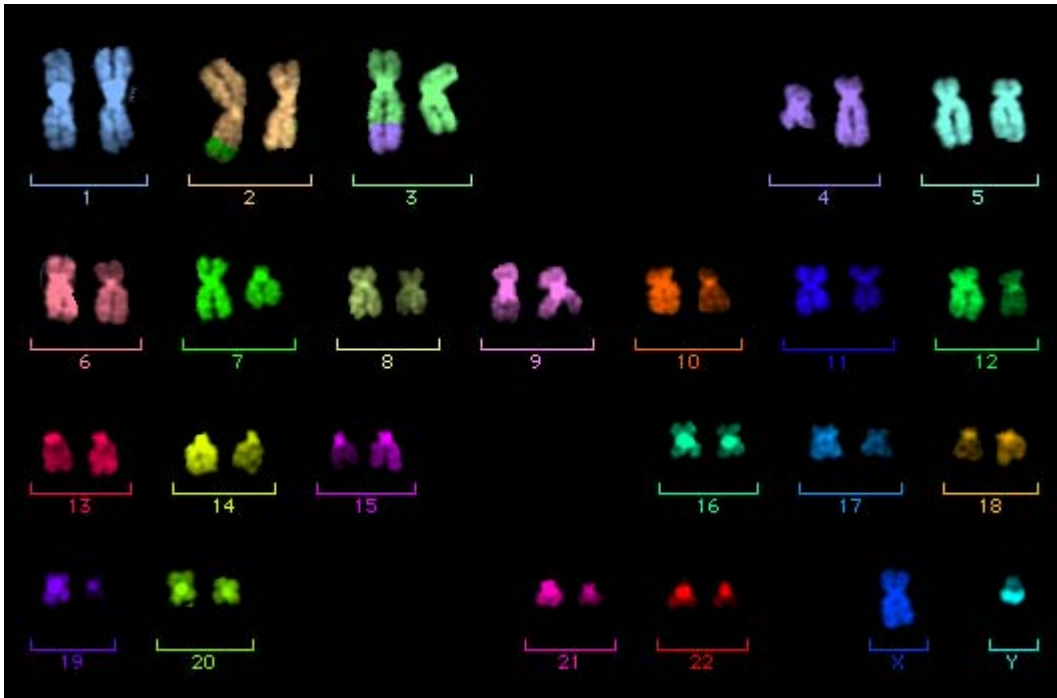


Figure 3. A karyotype of a human lymphocyte exposed to 0.3 Gy Fe-ions (1 GeV/nucleon). The cell contains a non-reciprocal exchange involving chromosomes 2, 3, and 4. Complex-type exchanges are very rarely seen after exposure to low-LET radiation at doses $<2\text{Gy}$, but can be induced by single traversals of heavy ions.