



US007158917B1

(12) **United States Patent**
Bickford

(10) **Patent No.:** **US 7,158,917 B1**
(45) **Date of Patent:** **Jan. 2, 2007**

(54) **ASSET SURVEILLANCE SYSTEM:
APPARATUS AND METHOD**

(75) Inventor: **Randall L. Bickford**, Orangevale, CA (US)

(73) Assignee: **Intellectual Assets LLC**, Lake Tahoe, NV (US)

(*) Notice: Subject to any disclaimer, the term of this patent is extended or adjusted under 35 U.S.C. 154(b) by 140 days.

6,131,076 A	10/2000	Wegerich et al.
6,181,975 B1	1/2001	Gross et al.
6,202,038 B1	3/2001	Wegerich et al.
6,240,372 B1	5/2001	Gross et al.
6,245,517 B1	6/2001	Chen et al.
6,609,036 B1 *	8/2003	Bickford 700/30
6,625,569 B1	9/2003	James et al.
2001/0049590 A1	12/2001	Wegerich
2003/0055607 A1	3/2003	Wegerich et al.

(Continued)

(21) Appl. No.: **11/073,161**

(22) Filed: **Mar. 5, 2005**

Related U.S. Application Data

(63) Continuation-in-part of application No. 10/095,835, filed on Mar. 8, 2002, now Pat. No. 6,892,163.

(51) **Int. Cl.**
G01R 17/00 (2006.01)
G05B 13/02 (2006.01)

(52) **U.S. Cl.** **702/181; 700/30**

(58) **Field of Classification Search** **702/179-183; 700/30**

See application file for complete search history.

(56) **References Cited**

U.S. PATENT DOCUMENTS

5,223,207 A	6/1993	Gross et al.
5,410,492 A	4/1995	Gross et al.
5,459,675 A	10/1995	Gross et al.
5,586,066 A	12/1996	White et al.
5,629,872 A	5/1997	Gross et al.
5,680,409 A	10/1997	Qin et al.
5,745,382 A	4/1998	Vilam et al.
5,761,090 A	6/1998	Gross et al.
5,764,509 A	6/1998	Gross et al.
5,774,379 A	6/1998	Gross et al.
5,987,399 A	11/1999	Wegerich et al.
6,107,919 A	8/2000	Wilks et al.
6,119,111 A	9/2000	Gross et al.

OTHER PUBLICATIONS

K. Humenik, et al, Sequential Probability Ratio Tests for Reactor Signal Validation and Sensor Surveillance Applications, Nuclear Science and Engineering, vol. 105, pp. 383-390, 1990.

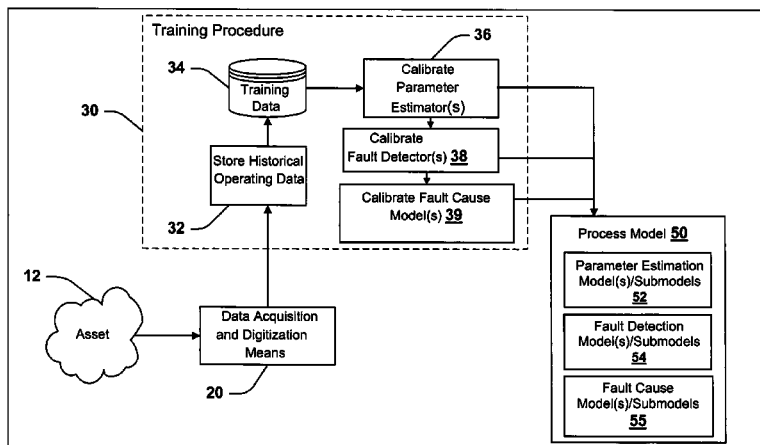
(Continued)

Primary Examiner—John Barlow
Assistant Examiner—Victor J. Taylor
(74) *Attorney, Agent, or Firm*—Dennis A. DeBoo

(57) **ABSTRACT**

System and method for providing surveillance of an asset comprised of numerically fitting at least one mathematical model to obtained residual data correlative to asset operation; storing at least one mathematical model in a memory; obtaining a current set of signal data from the asset; retrieving at least one mathematical model from the memory, using the retrieved mathematical model in a sequential hypothesis test for determining if the current set of signal data is indicative of a fault condition; determining an asset fault cause correlative to a determined indication of a fault condition; providing an indication correlative to a determined fault cause, and an action when warranted. The residual data can be mode partitioned, a current mode of operation can be determined from the asset, and at least one mathematical model can be retrieved from the memory as a function of the determined mode of operation.

32 Claims, 20 Drawing Sheets



U.S. PATENT DOCUMENTS

2004/0002776 A1 1/2004 Bickford
 2004/0006398 A1 1/2004 Bickford

OTHER PUBLICATIONS

- K.C. Gross, et al, Sequential Probability Ratio Test for Nuclear Plant Component Surveillance, Nuclear Technology, vol. 93, p. 131, Feb. 1991.
- A. Racz, Comments on the Sequential Probability Ratio Testing Methods, Annals of Nuclear Energy, vol. 23, No. 11, pp. 919-934, 1996.
- K. Kulacsy, Further Comments on the Sequential Probability Ratio Testing Methods, prepared for Annals of Nuclear Energy by the KFKI Atomic Energy Research Institute, Budapest, Hungary, Report No. KFKI-1996-10/G, 1996.
- R. M. Singer, et al, Model-Based Nuclear Power Plant Monitoring and Fault Detection: Theoretical Foundations, Proceedings. 9th International Conference on Intelligent Systems Applications to Power Systems, Seoul, Korea, 1997.
- K.C. Gross, et al, Application of a Model-based Fault Detection System to Nuclear Plant Signals, Proceedings 9th International Conference on Intelligent Systems Applications to Power Systems, Seoul, Korea, 1997.
- R. M. Singer, et al, Power Plant Surveillance and Fault Detection: Applications to a Commercial PWR, International Atomic Energy Agency, IAEA-TECDOC-1054, pp. 185-200, Sep. 1997.
- K. Kulacsy, Tests of the Bayesian Evaluation of SPRT Outcomes on PAKS NPP Data, KFKI Atomic Energy Research Institute, Budapest, Hungary, Report No. KFKI-1997-07/G, 1997.
- J.P. Herzog, et al, Dynamics Sensor Validation for Reusable Launch Vehicle Propulsion, AIAA 98-3604, 34th Joint Propulsion Conference, Cleveland, Ohio, 1998.
- Miron, A., et al, The Effects of Parameter Variation on MSET Models of the Crystal River-3 Feedwater Flow System, ANS Annual Meeting, Jun. 1998, Printed in USA by Argonne National Laboratory.
- Wrest, D., et al., Instrument Surveillance and Calibration Verification through Plant Wide Monitoring Using Autoassociative Neural Networks, Specialists Meeting on Monitoring and Diagnosis Systems to Improve Nuclear Power Plant Reliability and Safety, May 1996, printed by the International Atomic Energy Agency.
- Hylko, J.M., New AI Technique Detects Instruments, Power, Nov. 1998, Printed in USA by Power.
- Herzog, J.P., et al, MSET Modeling of Crystal River-3 Venturi Flow Meters, 6th International Conference on Nuclear Engineering, 1998, Printed in USA by ASME.
- Bickford, R.L., et al, Real-Time Space Shuttle Main Engine Sensor Validation, National Aeronautics and Space Administration, Aug. 1995, Printed in USA by ExperTech & Intelligent Software Associates, Inc.
- Bickford, R.L., et al, Real-Time Flight Data Validation For Rocket Engines, AIAA, 1996, Printed in USA by ExperTech & NYMA, Inc.
- Bickford, R.L., et al, Real-Time Sensor Validation for Autonomous Flight Control, AIAA, Jul. 1997, Printed in USA by Expert Microsystems, Inc. & Intelligent Software Associates, Inc. & Boeing Defense and Space Group.
- Bickford, R.L., et al, Real-Time Sensor Validation For Propulsion Systems, American Institute of Aeronautics and Astronautics, 1998, Printed in USA by Expert Microsystems, Inc. & Dynacs Engineering Co.
- Bickford, R.L., et al, Real-Time Sensor Data Validation For Space Shuttle Main Engine Telemetry Monitoring, AIAA, Jun. 1999, Printed in USA by Expert Microsystems, Inc. & Intelligent Software Associates, Inc. & Dynacs Engineering Company & NASA Glenn Research Center.
- Singer, R.M., et al, A Pattern-recognition-based, Fault-tolerant Monitoring and Diagnostic Technique, 7th Symp. on Nuclear Reactor Surveillance, Jun. 1995, Printed in USA by Argonne National Laboratory.
- Bickford, R.L., et al, Online Signal Validation for Assured Data Integrity, 47th International Instrumentation Symposium, May 2001, Printed in USA by Expert Microsystems, Inc., and NASA Glenn Research Center.
- Wegerich, S., et al, Challenges Facing Equipment Condition Monitoring Systems, MARCOM 2001, May 2001, Printed in USA by SmartSignal Corporation.
- Zavaljevski, N. et al, Sensor Fault Detection in Nuclear Power Plants Using Multivariate State Estimation Technique and Support Vector Machines, 3rd Intl. Conf. of Yugoslav Nuclear Society, Oct. 2000, Printed in USA by Argonne National Laboratory.
- Zavaljevski, N., et al, Support Vector Machines for Nuclear Reactor State Estimation, ANS Topical Mtg. on Advances in Reactor Physics, May 2000, Printed in USA by Argonne National Laboratory.
- Bickford, R.L., et al, Sensor Validation Tools and SSME Network, Final Report, Apr. 2000, Printed in USA by Expert Microsystems, Inc..
- Bickford, Randall, et al.; Development of A Real-Time Turbine Engine Diagnostic System; 38th AIAA/ASME/SAE/ASEE Joint Propulsion Conference; Jul. 7-10, 2002; 11 total pages Including cover; Indianapolis, Indiana.

* cited by examiner

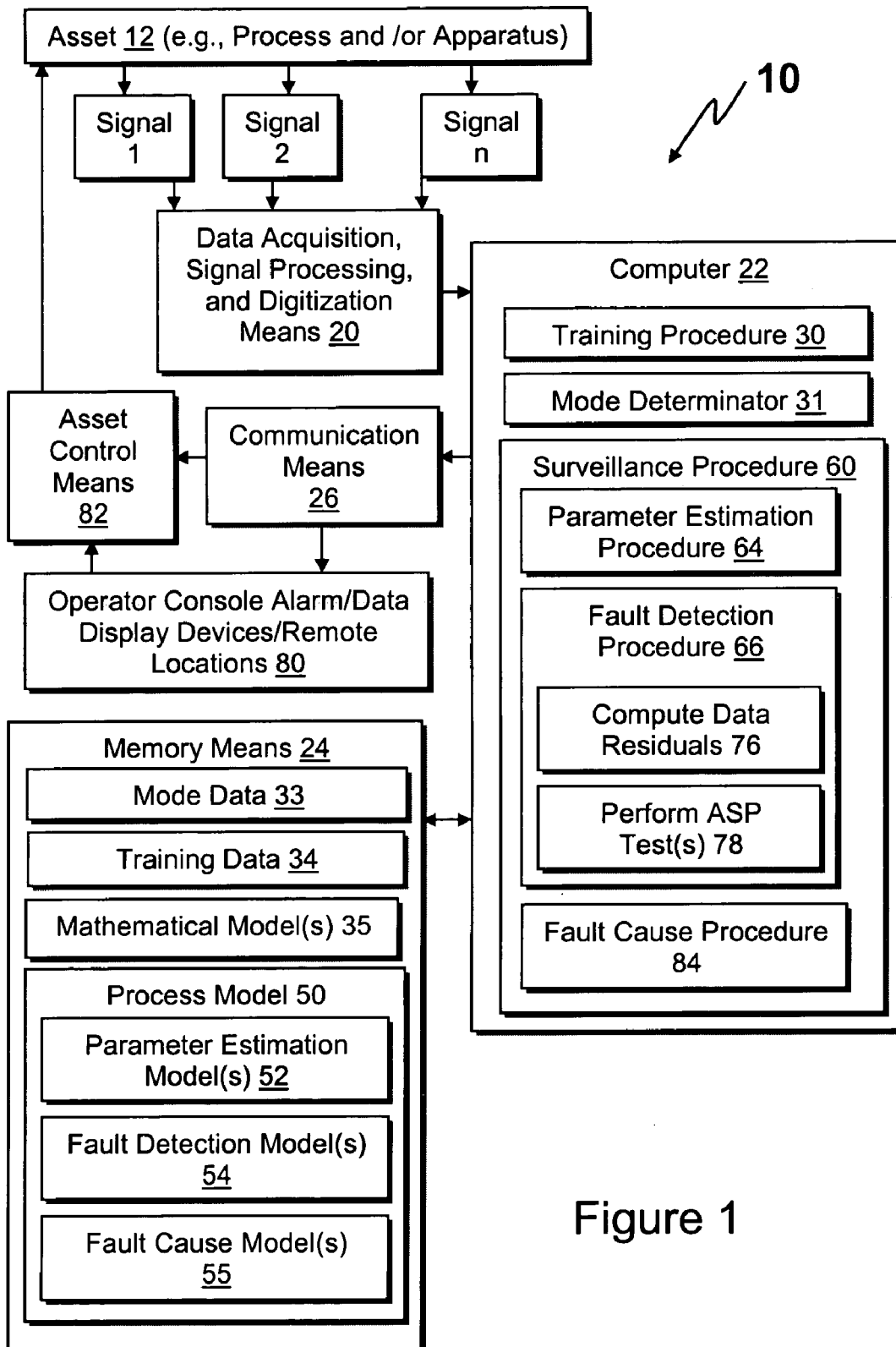


Figure 1

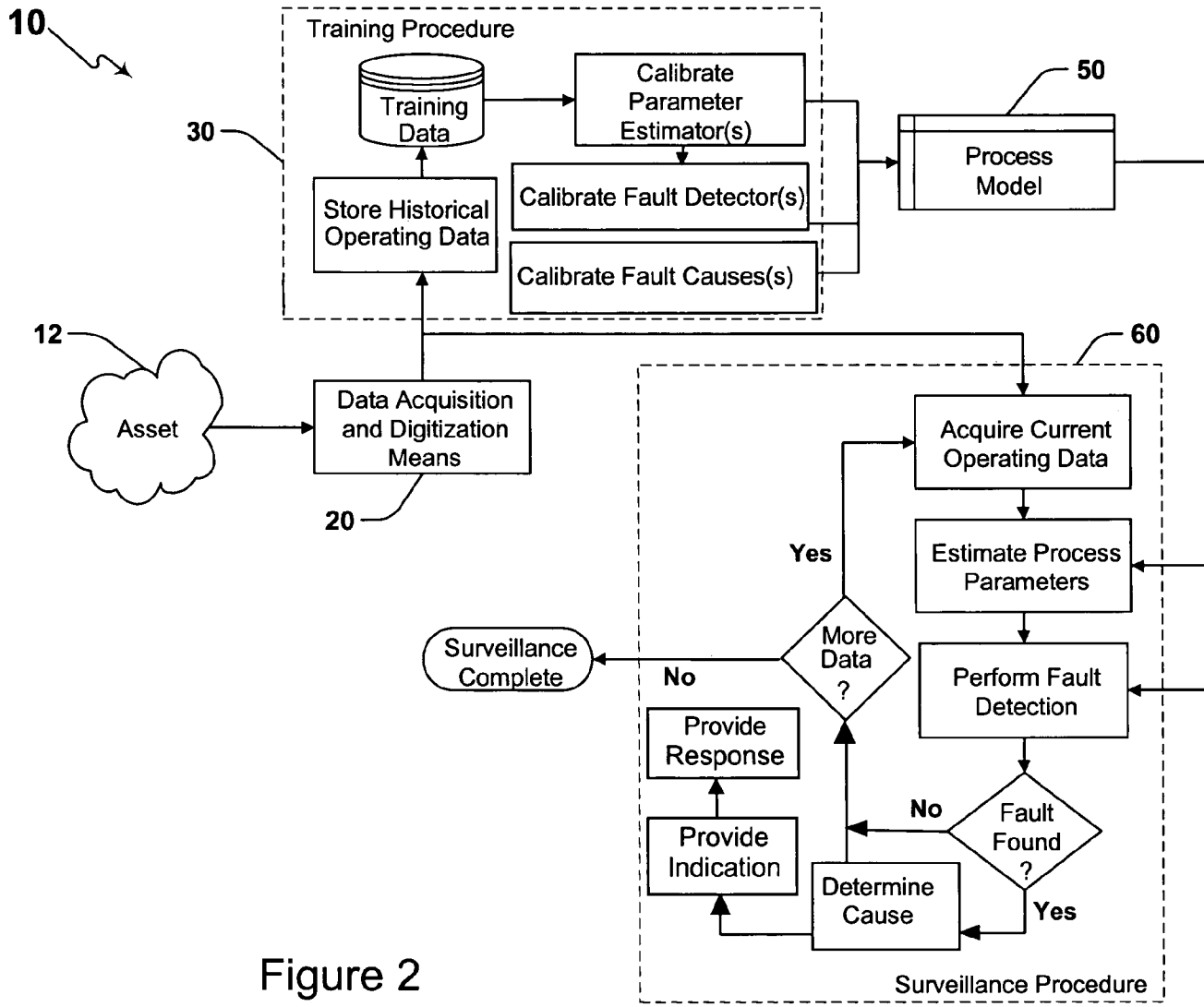


Figure 2

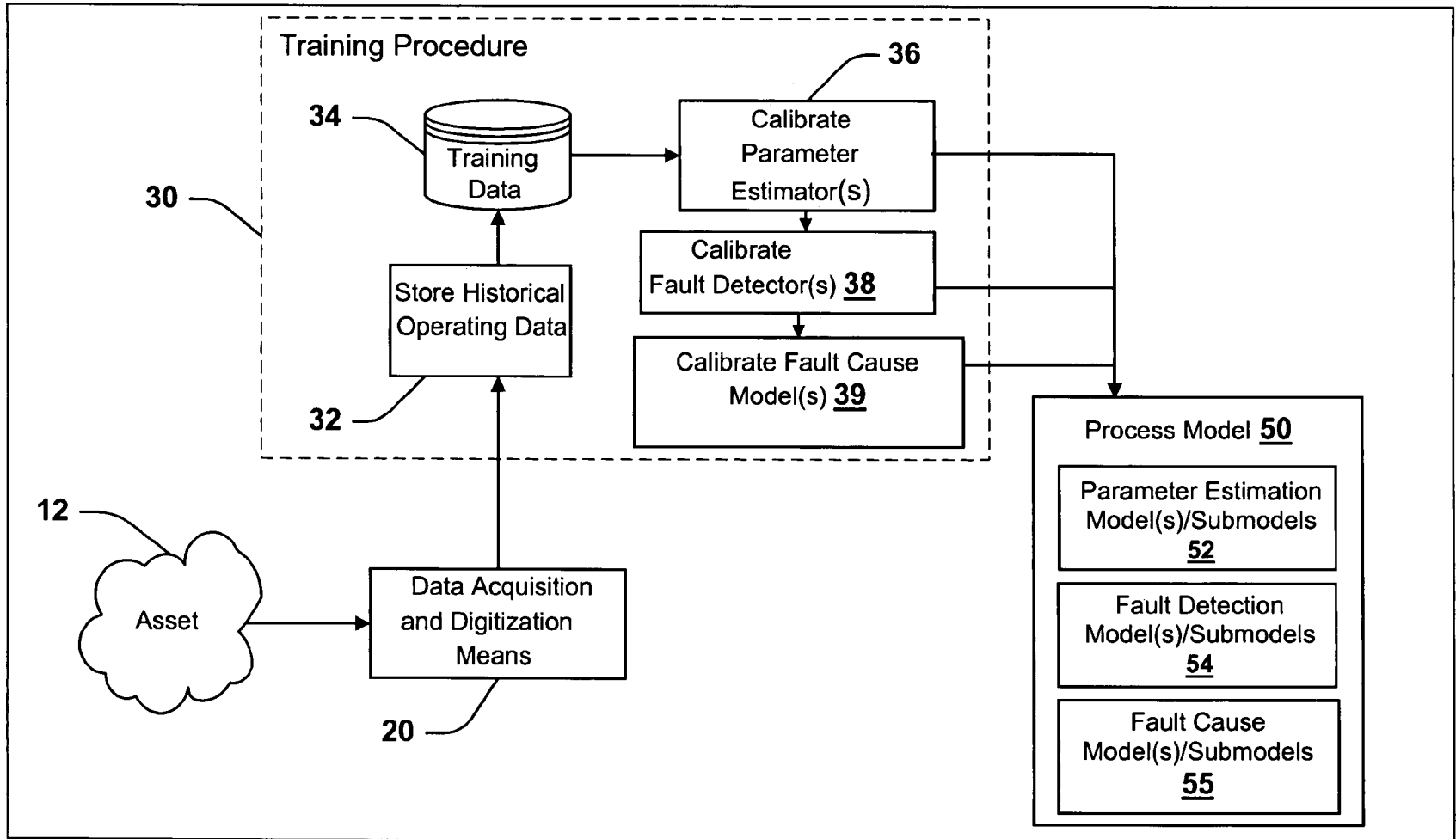


Figure 3

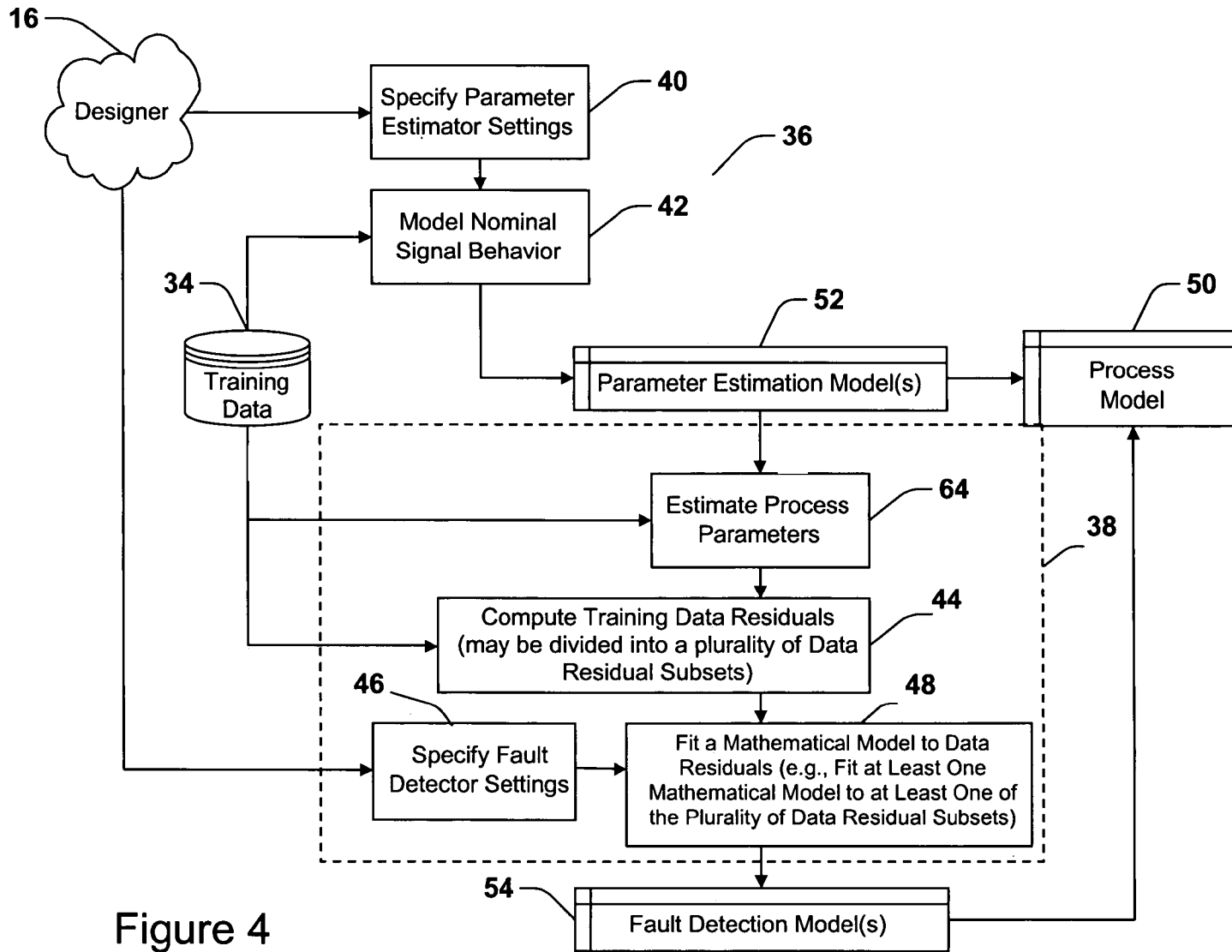


Figure 4

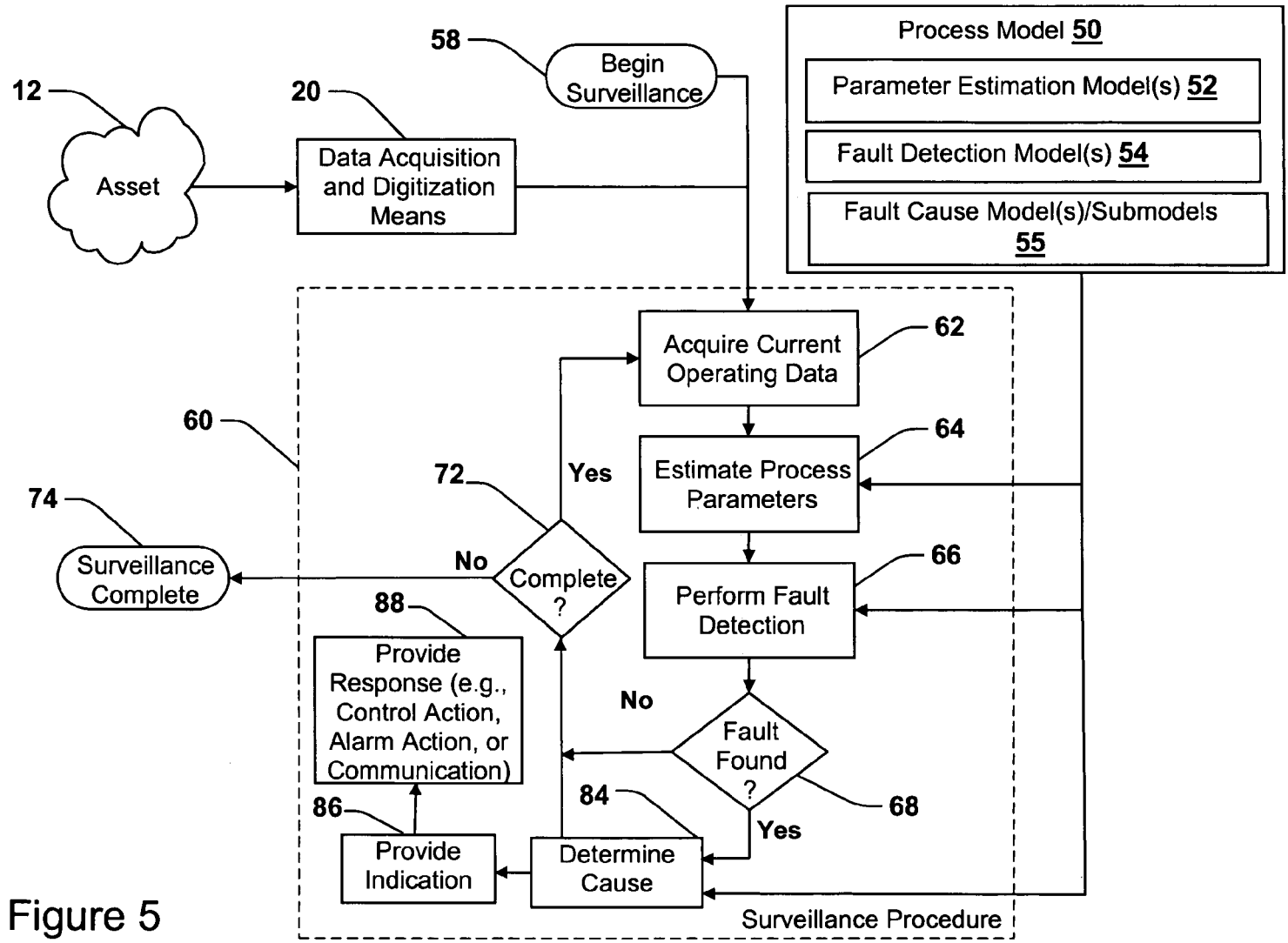


Figure 5

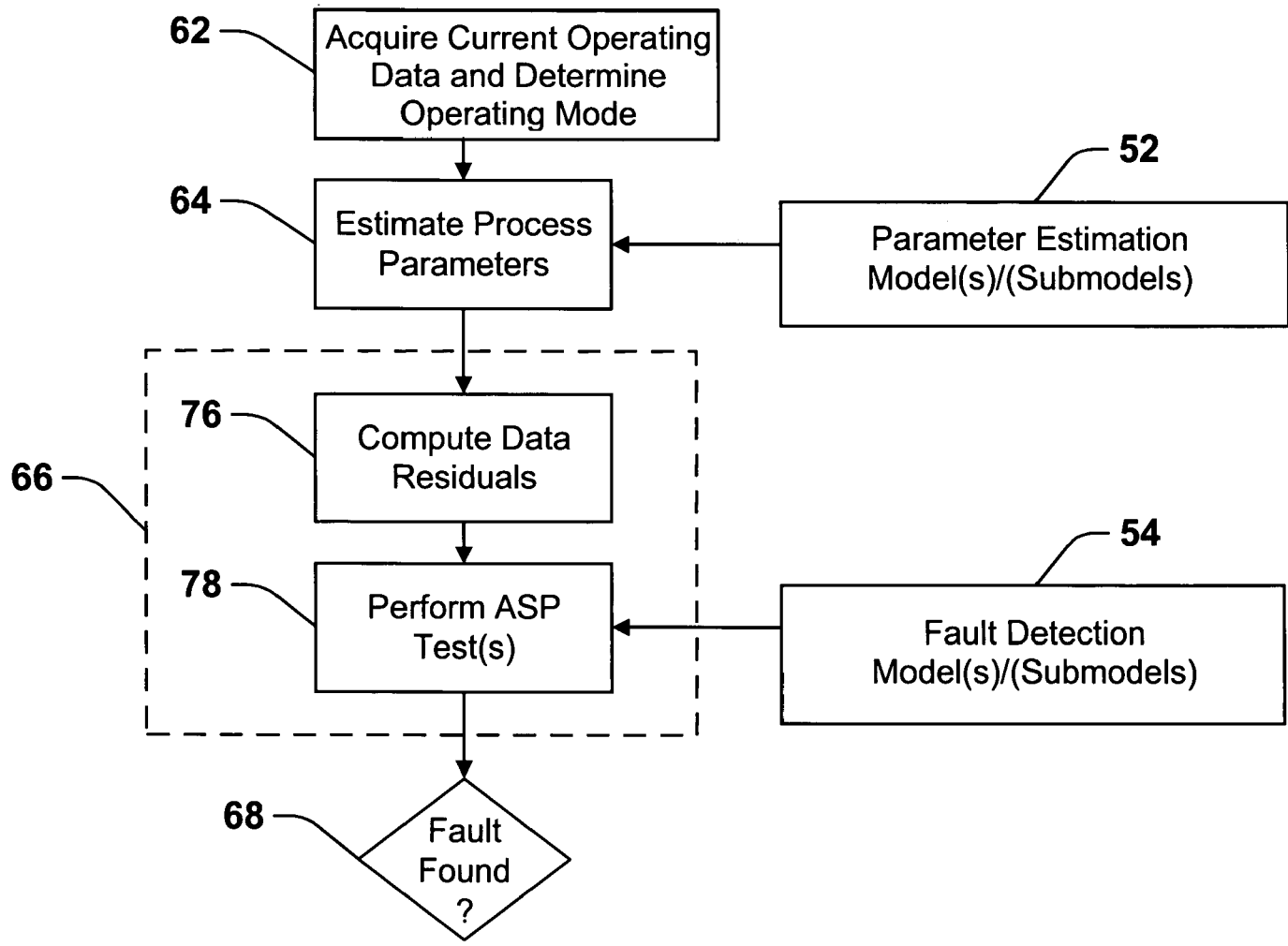


Figure 6

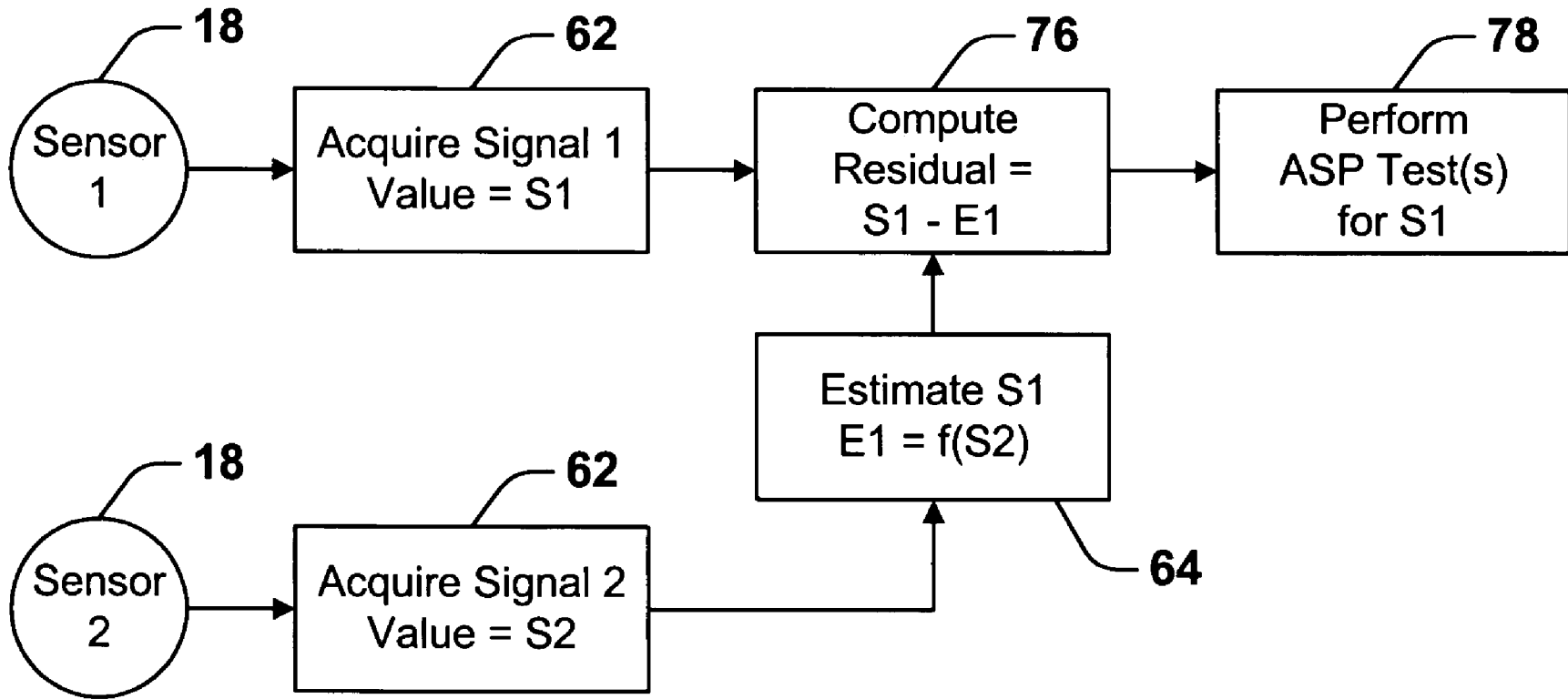


Figure 7

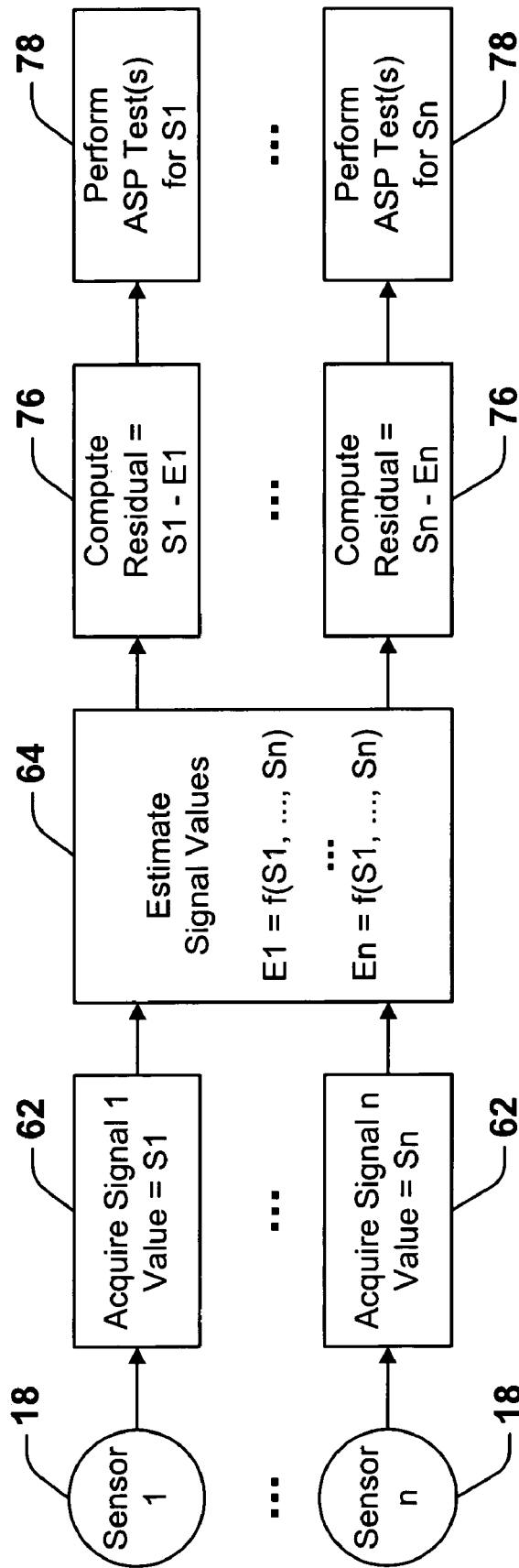


Figure 8

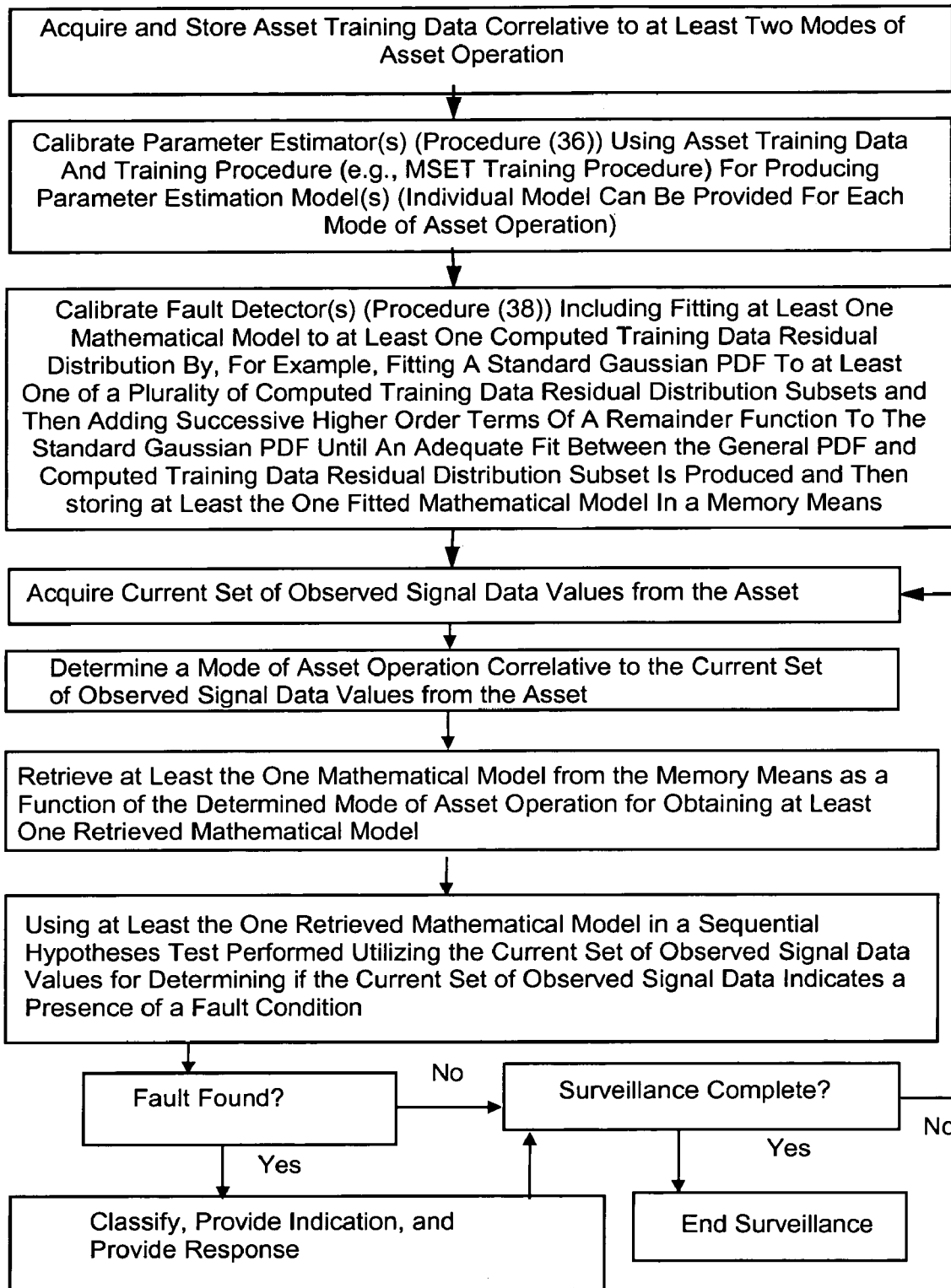


Figure 9

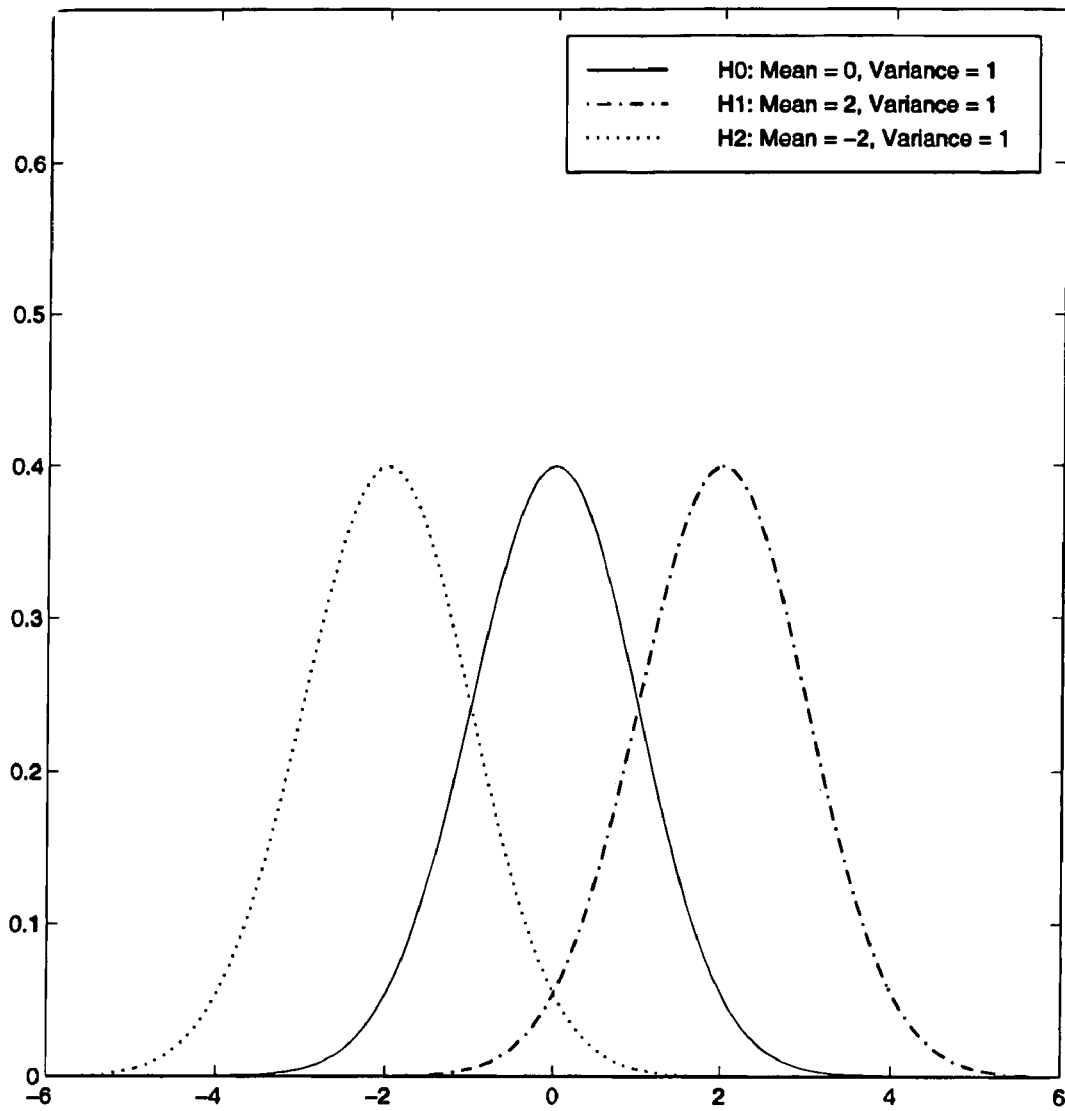


Figure 10

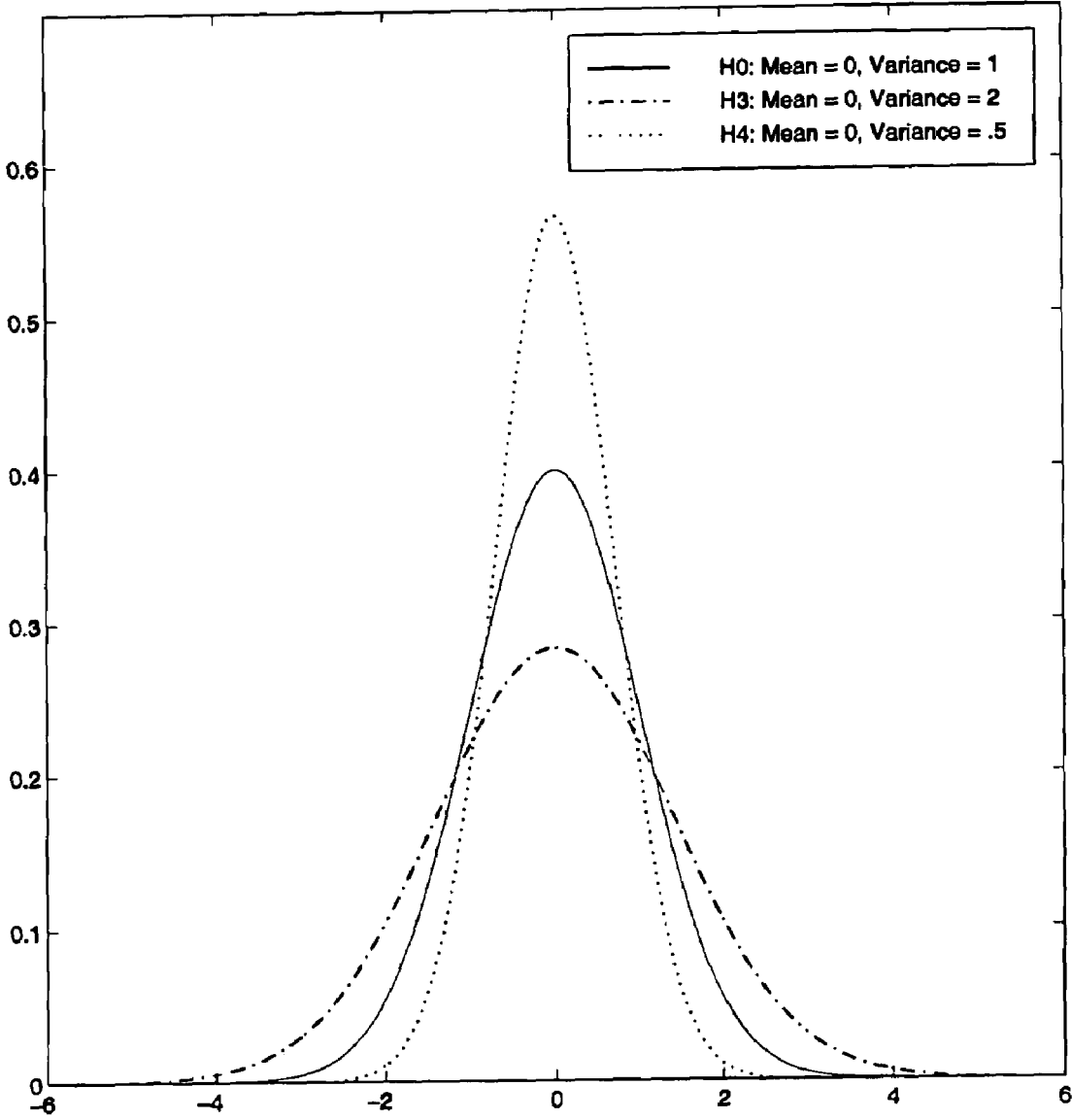


Figure 11

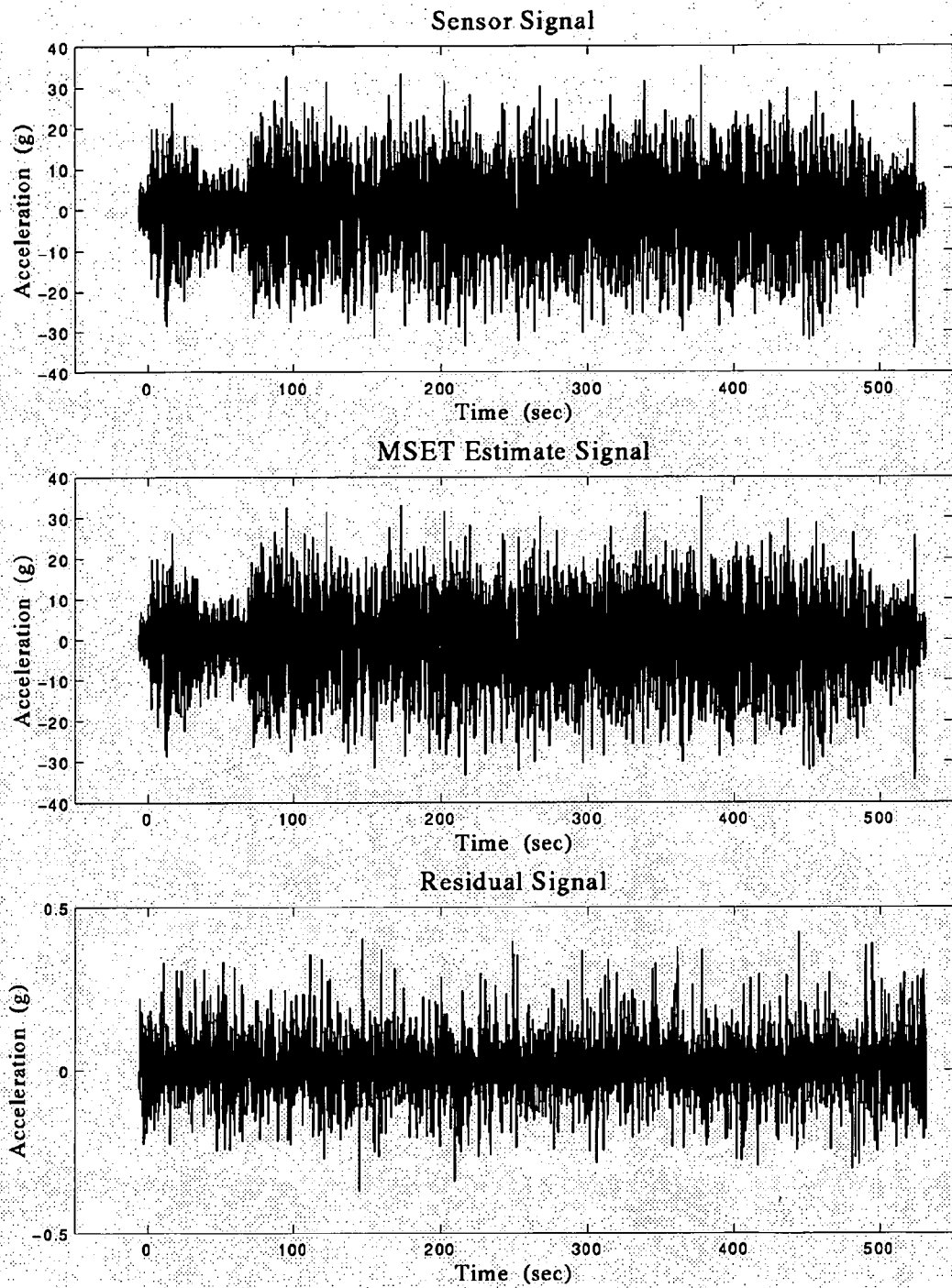


Figure 12

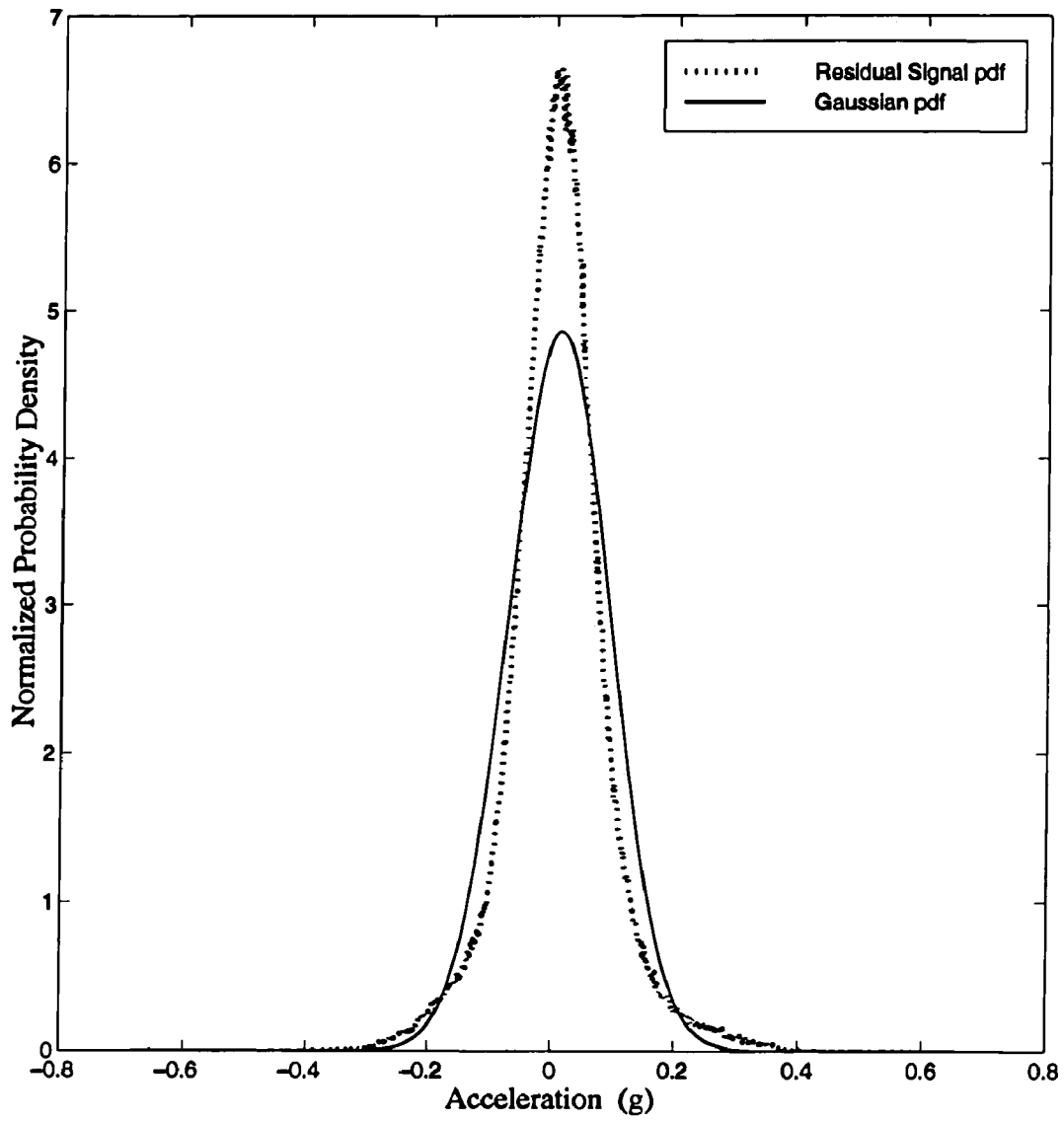


Figure 13

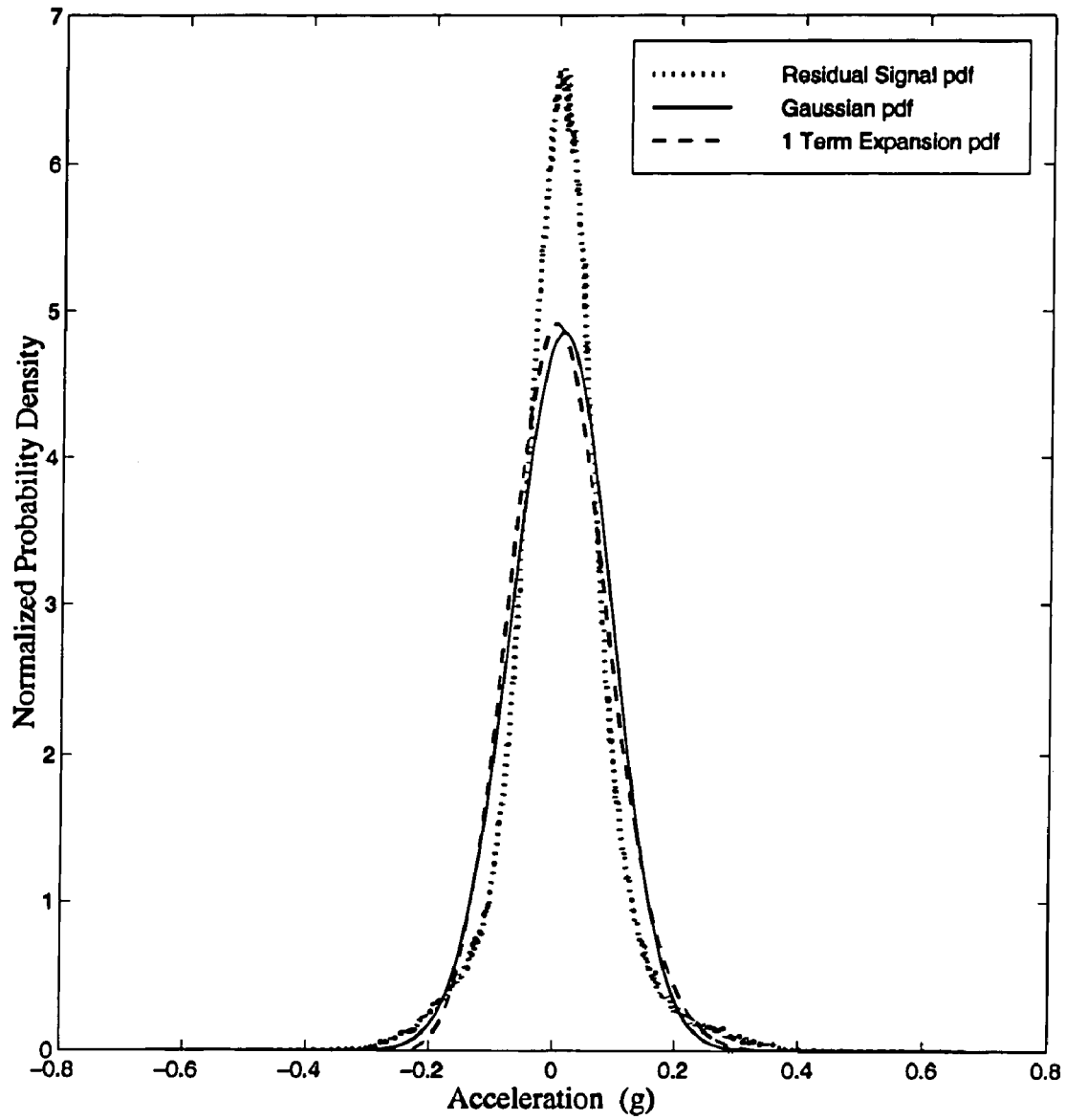


Figure 14

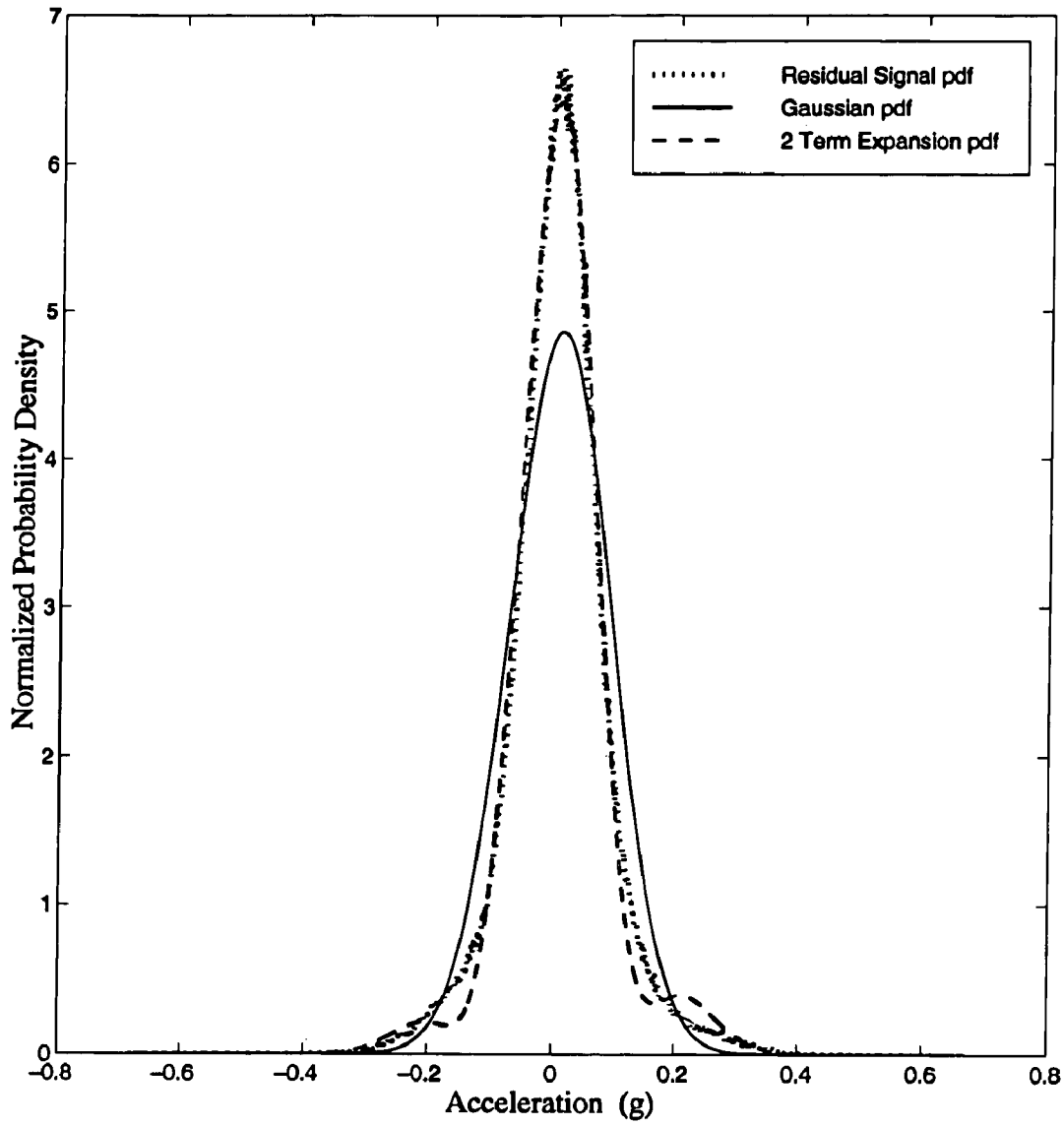


Figure 15

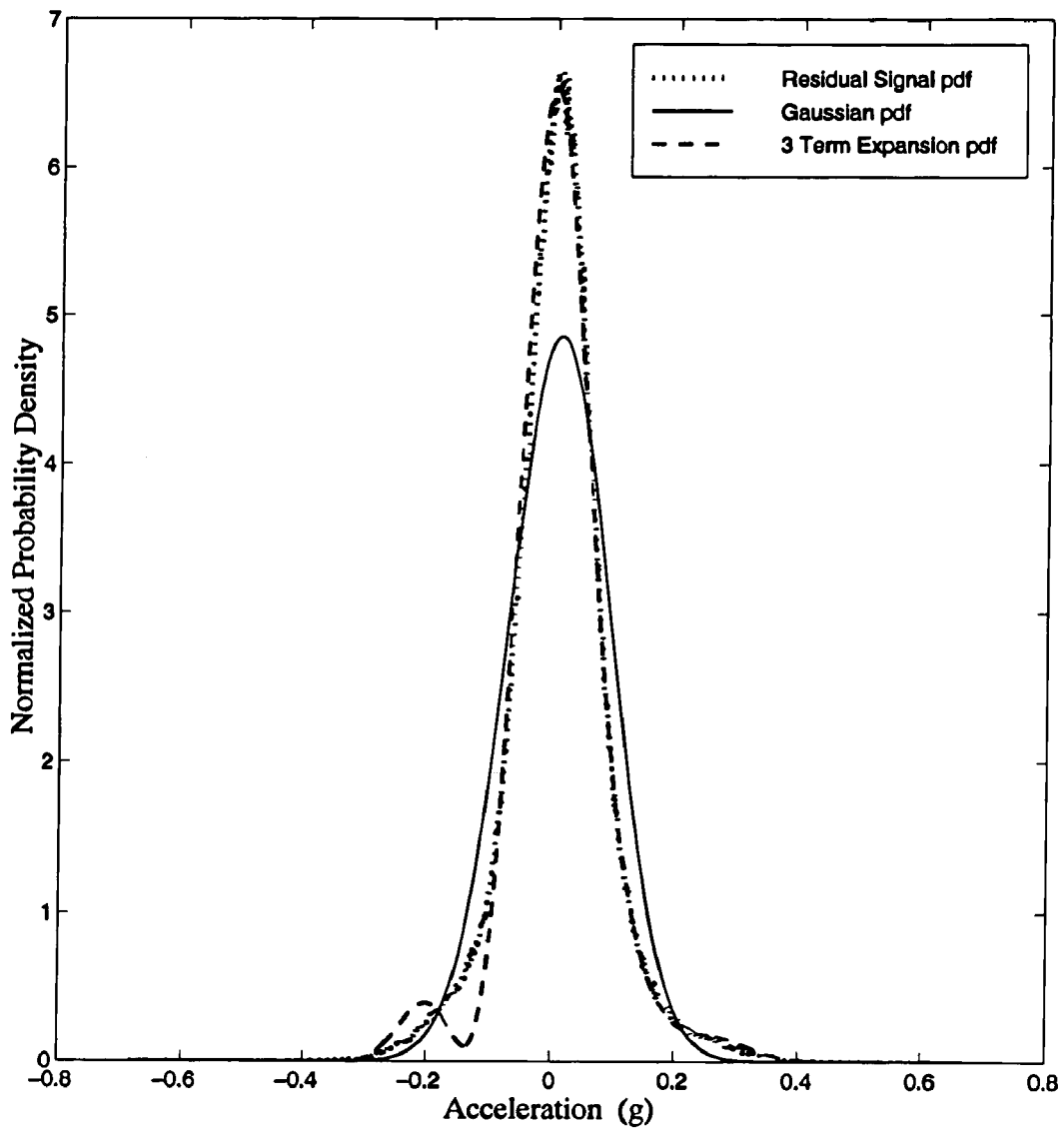


Figure 16

Sensor Number	Gaussian	One-Term Series Expansion	Two-Term Series Expansion	Three-Term Series Expansion	Four-Term Series Expansion
1	0.414	0.409	0.122	0.151	2.06
2	0.389	0.396	0.147	0.223	2.13
3	0.233	0.234	0.0605	0.0651	0.171
4	0.339	0.320	0.0964	0.146	0.256
5	0.156	0.167	0.121	0.0985	0.0983
6	0.180	0.134	0.107	0.326	0.656

Figure 17

Sensor Number	Gaussian	One-Term Series Expansion	Two-Term Series Expansion	Three-Term Series Expansion	Four-Term Series Expansion
1	0.414	0.176	0.0826	0.0755	0.0899
2	0.389	0.174	0.0811	0.0816	0.0659
3	0.233	0.122	0.0522	0.0573	0.0522
4	0.339	0.166	0.0706	0.0726	0.0713
5	0.156	0.0699	0.0394	0.0352	0.0373
6	0.180	0.0710	0.0346	0.0352	0.0369

Figure 18

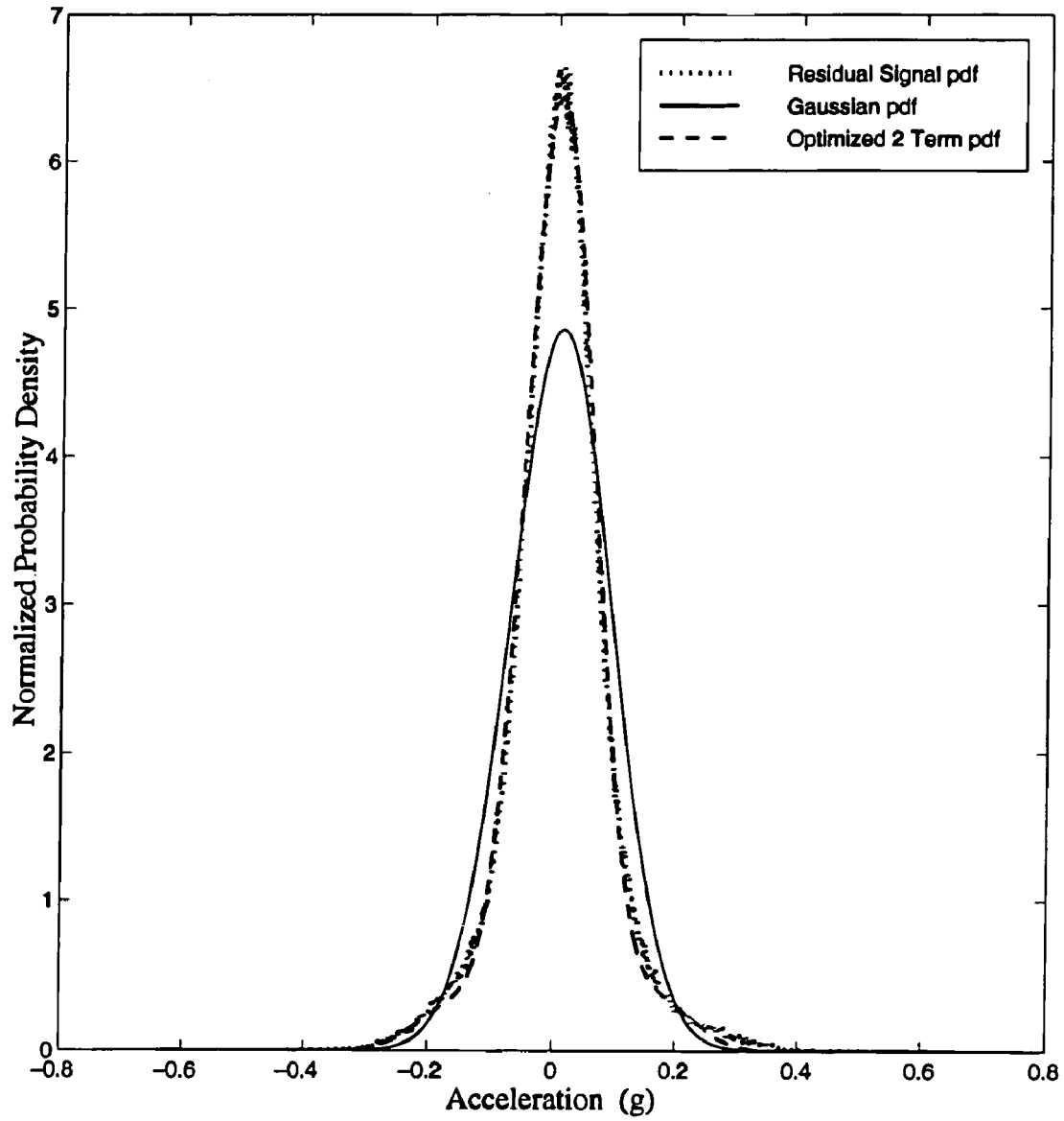


Figure 19

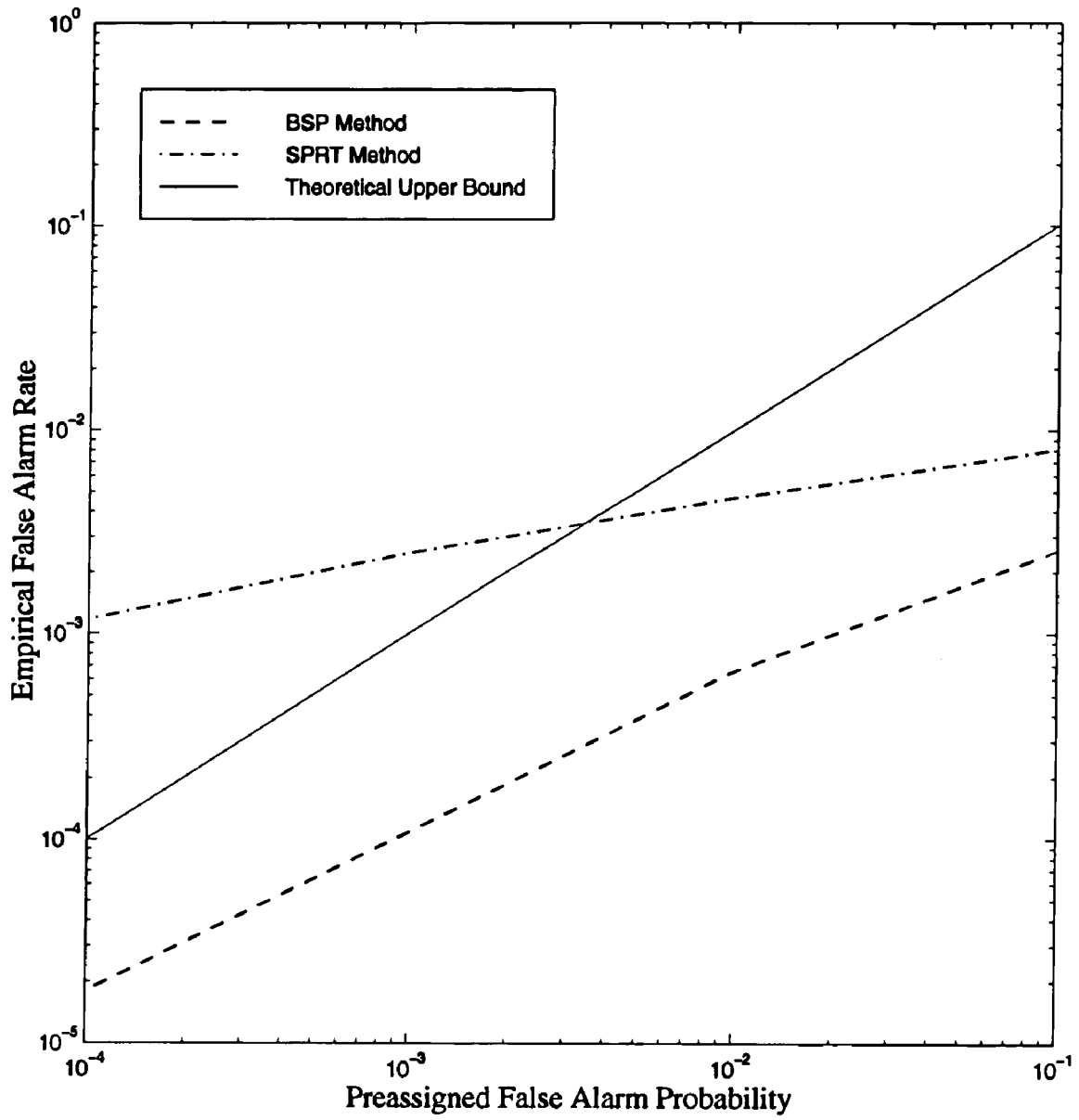


Figure 20

1

**ASSET SURVEILLANCE SYSTEM:
APPARATUS AND METHOD****CROSS-REFERENCE TO RELATED
APPLICATIONS**

This application is a continuation-in-part patent application of U.S. application Ser. No. 10/095,835, filed Mar. 8, 2002, now U.S. Pat. No. 6,892,163.

**STATEMENT REGARDING FEDERALLY
SPONSORED RESEARCH AND
DEVELOPMENT**

The invention described herein was made in the performance of work under NASA Small Business Technology Transfer Research (STTR) Contract NAS8-98027, NASA Small Business Innovation Research (SBIR) Contract NAS4-99012, and NASA Small Business Technology Transfer Research (STTR) Contract NAS13-01001 and is subject to the provisions of Public Law 96-517 (35 USC 202) and the Code of Federal Regulations 48 CFR 52.227-11 as modified by 48 CFR 1852.227-11, in which the contractor has elected to retain title.

FIELD OF THE INVENTION

This invention relates generally to an asset surveillance system: apparatus and method and, in particular, to an asset surveillance system: apparatus and method for performing surveillance of an asset such as a process and/or apparatus wherein the surveillance is performed using a adaptive sequential probability (ASP) fault detection test for providing an indication of an asset fault condition which may be followed by fault cause determination and indication.

BACKGROUND OF THE INVENTION

Conventional process surveillance schemes are sensitive only to gross changes in the mean value of a process signal or to large steps or spikes that exceed some threshold limit value. These conventional methods suffer from either a large number of false alarms (if thresholds are set too close to normal operating levels) or from a large number of missed (or delayed) alarms (if the thresholds are set too expansively). Moreover, most conventional methods cannot perceive the onset of a process disturbance or sensor signal error that gives rise to a signal below the threshold level or an alarm condition. Most conventional methods also do not account for the relationship between measurements made by one sensor relative to another redundant sensor or between measurements made by one sensor relative to predicted values for the sensor.

Recently, improved methods for process surveillance have developed from the application of certain aspects of artificial intelligence technology. Specifically, parameter estimation methods have been developed using either statistical, mathematical or neural network techniques to learn a model of the normal patterns present in a system of process signals. After learning these patterns, the learned model is used as a parameter estimator to create one or more predicted (virtual) signals given a new observation of the actual process signals. Further, high sensitivity surveillance methods have been developed for detecting process and signal faults by analysis of a mathematical comparison between an actual process signal and its virtual signal counterpart. In particular, such a mathematical comparison is most often

2

performed on a residual error signal computed as, for example, the difference between an actual process signal and its virtual signal counterpart.

Parameter estimation based surveillance schemes have been shown to provide improved surveillance relative to conventional schemes for a wide variety of assets including industrial, utility, business, medical, transportation, financial, and biological systems. However, parameter estimation based surveillance schemes have in general shown limited success when applied to complex processes. Applicants recognize and believe that this is because the parameter estimation model for a complex process will, in general, produce residual error signals having a non-Gaussian probability density function. Moreover, a review of the known prior-art discloses that virtually all such surveillance systems developed to date utilize or assume a Gaussian model of the residual error signal probability density function for fault detection. Hence, a significant shortcoming of the known prior-art is that, inter alia, parameter estimation based surveillance schemes will produce numerous false alarms due to the modeling error introduced by the assumption of a Gaussian residual error signal probability density function. The implication for parameter estimation based surveillance schemes is that the fault detection sensitivity must be significantly reduced to prevent false alarms thereby limiting the utility of the method for process surveillance. An alternative for statistically derived fault detection models is to mathematically pre-process the residual error signals to remove non-Gaussian elements prior to using the residual error signals in the fault detection model; however this approach requires an excess of additional processing and also limits the sensitivity of the surveillance method. Therefore, the implication of assuming a Gaussian residual error signal probability density function for a parameter estimation based surveillance scheme is simply that the system becomes less accurate thereby degrading the sensitivity and utility of the surveillance method.

Many attempts to apply statistical fault detection techniques to surveillance of assets such as industrial, utility, business, medical, transportation, financial, and biological processes have met with poor results in part because the fault detection models used or assumed a Gaussian residual error signal probability density function.

In one specific example, a multivariate state estimation technique based surveillance system for the Space Shuttle Main Engine's telemetry data was found to produce numerous false alarms when a Gaussian residual error fault detection model was used for surveillance. In this case, the surveillance system's fault detection threshold parameters were desensitized to reduce the false alarm rate; however, the missed alarm rate then became too high for practical use in the telemetry data monitoring application.

Moreover, current fault detection techniques for surveillance of assets such as industrial, utility, business, medical, transportation, financial, and biological processes either fail to recognize the surveillance performance limitations that occur when a Gaussian residual error model is used or, recognizing such limitations, attempt to artificially conform the observed residual error data to fit the Gaussian model. This may be attributed, in part, to the relative immaturity of the field of artificial intelligence and computer-assisted surveillance with regard to real-world process control applications. Additionally, a general failure to recognize the specific limitations that a Gaussian residual error model imposes on fault decision accuracy for computer-assisted surveillance is punctuated by an apparent lack of known prior art teachings that address potential methods to over-

come this limitation. In general, the known prior-art teaches computer-assisted surveillance solutions that either ignore the limitations of the Gaussian model for reasons of mathematical convenience or attempt to conform the actual residual error data to the artificial Gaussian model, for example, by using frequency domain filtering and signal whitening techniques.

For the foregoing reasons, there is a need for a surveillance system and method that overcomes the significant shortcomings of the known prior-art as delineated hereinabove.

BRIEF SUMMARY OF THE INVENTION

In general, and in one aspect, an embodiment of the invention provides a method for performing surveillance of an asset which comprises the steps of: obtaining residual data correlative to asset operation, fitting a mathematical model to the acquired residual data, storing the mathematical model in a memory means, obtaining a current set of observed signal data from the asset; using the previously stored mathematical model in a sequential hypothesis test for determining if the current set of observed signal data is indicative of an asset fault condition; determining an asset fault cause correlative to a determined indication of an asset fault condition; and providing an indication correlative to a determined asset fault cause for providing asset surveillance.

Moreover, Embodiments of the invention may include one or more of the following steps: determining a most probable asset fault cause from a plurality of possible asset fault causes; providing a response to a provided indication correlative to a determined asset fault cause; providing a control action as the provided response to a provided indication correlative to a determined asset fault cause; and providing an alarm action as the provided response to a provided indication correlative to a determined asset fault cause. Embodiments of the invention may also include the steps of obtaining residual data correlative to at least two modes of asset operation; dividing the obtained residual data into a plurality of residual data subsets each having at least one mode of asset operation associated thereto; and fitting at least one mathematical model to at least one of the plurality of residual data subsets for defining at least the one mathematical model stored in memory.

In another aspect, an embodiment of the invention provides a method for performing surveillance of an asset is provided comprised of the steps including: obtaining residual data correlative to at least two modes of asset operation; dividing the obtained residual data into a plurality of residual data subsets each having at least one mode of asset operation associated thereto; fitting at least one mathematical model to at least one of the plurality of residual data subsets for defining at least one mathematical model stored in a memory; obtaining a current set of observed signal data from the asset; determining a mode of asset operation correlative to the current set of observed signal data obtained from the asset; retrieving at least one mathematical model from the memory means as a function of the determined mode of asset operation for obtaining at least one retrieved mathematical model, and using at least the one retrieved mathematical model in a sequential hypothesis test for determining if the current set of observed signal data is indicative of an asset fault condition.

Moreover, and in combination with the above method, embodiments of the invention may further include one or more of the following steps: determining a most probable asset fault cause from a plurality of possible asset fault

causes; providing an indication correlative to a determined most probable asset fault cause; and providing a response to a provided indication correlative to a determined most probable asset fault cause wherein the provided response is, for example, a control action and/or an alarm action.

In another aspect, an embodiment of the invention provides a system for performing surveillance of an asset, the system comprising in combination: means for obtaining a current set of observed signal data from the asset; means for performing a sequential hypothesis test for determining if the current set of observed signal data is indicative of an asset fault condition; means for determining an asset fault cause correlative to a determined indication of an asset fault condition; and means for providing an indication correlative to a determined asset fault cause for providing asset surveillance.

Moreover, and in combination with the above system, embodiments of the invention may further include one or more of the following features: means for obtaining residual data correlative to at least two modes of asset operation; means for dividing the acquired residual data into a plurality of residual data subsets each having at least one mode of asset operation associated thereto; means for fitting at least one mathematical model to at least one of the plurality of residual data subsets and storing at least the one mathematical model in a memory means; means for determining a mode of asset operation correlative to the current set of observed signal data obtained from the asset, means for retrieving at least one mathematical model from said memory means as a function of the determined mode of asset operation for obtaining at least one retrieved mathematical model; and means for using at least the one retrieved mathematical model in performing the sequential hypothesis test for determining if the current set of observed signal data is indicative of an asset fault condition. Embodiments of the invention may also include one or more of the following features: means for determining a most probable asset fault cause correlative to a determined indication of an asset fault condition from a plurality of possible asset fault causes; means for providing an indication correlative to a determined most probable asset fault cause; means for providing a response to an indication correlative to a determined most probable asset fault cause wherein the means for providing a response may includes means for providing a control and/or an alarm action to an indication correlative to a determined most probable asset fault cause.

In another aspect, an embodiment of the invention provides a method for performing surveillance of an asset which comprises the steps of obtaining a current set of observed signal data from the asset; performing a sequential hypothesis test for determining if the current set of observed signal data is indicative of an asset fault condition; determining an asset fault cause correlative to a determined indication of an asset fault condition; and providing an indication correlative to a determined asset fault cause for providing asset surveillance.

In another aspect, an embodiment of the invention provides a computer readable medium having a program recorded thereon in which the program causes, in use, a computer running the program to execute a procedure for performing surveillance of an asset comprised of the steps including: obtaining a current set of observed signal data from the asset; performing a sequential hypothesis test for determining if the current set of observed signal data is indicative of an asset fault condition; determining an asset fault cause correlative to a determined indication of an asset

fault condition; and providing an indication correlative to a determined asset fault cause for providing asset surveillance.

Accordingly, it should be apparent that numerous modifications and adaptations may be resorted to without departing from the scope and fair meaning of the claims as set forth hereinbelow.

BRIEF DESCRIPTION OF THE DRAWINGS

FIG. 1 is a block diagram of an asset surveillance system.

FIG. 2 is a schematic functional flow diagram of an embodiment of an asset surveillance system.

FIG. 3 is a schematic functional flow diagram of a method and system for training a process model consisting of at least one parameter estimation model and at least one fault detection model using recorded observations of the actual process signals.

FIG. 4 is a schematic functional flow diagram of a method and system for the fault detection model training procedure.

FIG. 5 is a schematic functional flow diagram of a method and system for performing surveillance of an asset using at least one parameter estimation model and at least one fault detection model.

FIG. 6 is a schematic functional flow diagram of a method and system for the fault detection surveillance procedure.

FIG. 7 is a schematic functional flow diagram of a method and system for performing parameter estimation and fault detection using a redundant sensor.

FIG. 8 is a schematic functional flow diagram of a method and system for performing parameter estimation and fault detection using a generalized parameter estimation model, such as a multivariate state estimation model, a neural network model, an analytical model, or a Kalman filter model.

FIG. 9 is a flow diagram of a training and surveillance procedure.

FIG. 10 illustrates characteristics of the null and alternate hypotheses for the prior-art sequential probability ratio test (SPRT) mean tests.

FIG. 11 illustrates characteristics of the null and alternate hypotheses for the prior-art SPRT variance tests.

FIG. 12 illustrates acquired operating data, estimated parameter data, and residual error data for a typical Space Shuttle Main Engine accelerometer.

FIG. 13 illustrates a probability density function of the residual error data for a typical Space Shuttle Main Engine accelerometer with comparison to a Gaussian probability density function.

FIG. 14 illustrates an un-optimized one-term expansion probability density function model of the residual error data for a typical Space Shuttle Main Engine accelerometer with comparison to the actual residual error data and a Gaussian probability density function.

FIG. 15 illustrates an un-optimized two-term expansion probability density function model of the residual error data for a typical Space Shuttle Main Engine accelerometer with comparison to the actual residual error data and a Gaussian probability density function.

FIG. 16 illustrates an un-optimized three-term expansion probability density function model of the residual error data for a typical Space Shuttle Main Engine accelerometer with comparison to the actual residual error data and a Gaussian probability density function.

FIG. 17 lists the root mean square errors for five different un-optimized probability density function models computed for each of six Space Shuttle Main Engine accelerometers.

FIG. 18 lists the root mean square errors for five different optimized probability density function models computed for each of six Space Shuttle Main Engine accelerometers.

FIG. 19 illustrates the optimized two-term expansion probability density function model of the residual error data for a typical Space Shuttle Main Engine accelerometer with comparison to the actual residual error data and a Gaussian probability density function.

FIG. 20 illustrates the empirical false alarm rates with comparison to the prior art SPRT method.

DETAILED DESCRIPTION OF THE INVENTION

Considering the drawings, wherein like reference numerals denote like parts throughout the various drawing figures, reference numeral 10 is directed to an asset surveillance system: apparatus and method.

Referring to the drawings, an embodiment of the invention provides an asset surveillance system 10 for performing high sensitivity surveillance of a wide variety of assets which may include one or more industrial, utility, business, medical, transportation, financial, and biological processes and apparatuses wherein such system, process, apparatus and/or data signal source asset preferably has at least one distinct measured or observed signal or sequence comprised of characteristic data values which are processed by the system 10 for providing ultra-sensitive detection of the onset of, for example, system, process, apparatus and/or data signal source operating anomalies which may include sensor degradation, data signal degradation, and/or component performance degradation. The system 10 includes a training procedure 30 carried out on a computer 22 such that a process model 50 of an asset 12 (e.g., system, process, apparatus and/or data signal source) is stored in an associated memory 24 after being learned from historical operating data as delineated hereinbelow. The historical operating data includes a set or range of observations from expected or typical operation of the asset 12 that are acquired and digitized by a data acquisition means 20 and stored in a memory means 24 as training data 34 by using any combination of electronic data acquisition hardware and signal processing software 20 known to those having ordinary skill in the art, and informed by the present disclosure. Additionally, historical operating data may include a set or range of observations from atypical operations of the asset 12 that are acquired and digitized by the data acquisition means 20 and stored in a memory 24 and included in training data 34 by using any combination of electronic data acquisition hardware and signal processing software 20 known to those having ordinary skill in the art, and informed by the present disclosure.

In one embodiment, process model 50 is comprised of a parameter estimation model 52 or a collection of parameter estimation models or submodels 52 as necessary to provide an estimated value for each monitored item such as each sensor or data signal 14 of asset 12 to be monitored for the presence of fault conditions during a surveillance procedure 60. Additionally, and in one embodiment, the process model 50 is comprised of a fault detection model 54 or a collection of fault detection models or submodels 54 such that, for example, at least one fault detection model 54 is provided for each monitored item such as each sensor or data signal 14 of asset 12 to be monitored for the presence of fault conditions during the surveillance procedure 60. Furthermore, and in one embodiment, the process model 50 is comprised of a fault cause or classification model 55 which

may be, in general, created by using any method suitable for defining a fault cause or classification model, models, or submodels useful for determining the presence, source, or cause of an unacceptable asset status or condition on the basis of one or more fault indications. Methods suitable for the fault cause or classification model **55** may include, but are not limited to, a plurality of Bayesian belief network techniques, a plurality of neural network techniques, a plurality of decision tree techniques, a plurality of expert system techniques, a plurality of rule-based techniques, a plurality of determined similarity techniques, a plurality of hypothesis test techniques, and a plurality of procedural logic techniques. Each fault cause or classification model or submodel contained in the process model **50** may be created to implement any of a plurality of fault cause or classification techniques. Furthermore, the fault cause or classification technique implemented for an individual model or submodel is not constrained to be the same as the fault cause or classification technique implemented for any other model or submodel contained in the process model **50**.

The surveillance procedure **60**, in one embodiment, utilizes the stored process model **50** in a fault detection procedure **66** for determining if a current set of observed signal data is indicative of an asset fault condition. The surveillance procedure **60** further utilizes the stored process model **50** for determining an asset fault cause correlative to a determined indication of an asset fault condition. The surveillance procedure **60** also provides an indication correlative to a determined asset fault cause for providing asset surveillance. Moreover, an embodiment of the invention may include an operating mode determinator procedure **31** which provides operating modes for partitioning of the process model **50** which enables different parameter estimation models or methods, fault detection models or methods, and fault cause or classification models or methods to be used for surveillance within each individual operating mode of an asset. This ability enables lower false alarm rates and missed alarm rates.

In practice, and in one embodiment, the training procedure **20** may employ the operating mode determinator procedure **31** to partition the historical operating data into one or more training data subsets that together comprise a training data set **34** wherein each training data subset may be representative of a single operating mode i (M_i) wherein M_i is any mode between Mode **1** (M_1) to Mode N (M_N) where N is a positive integer or each training data subset **28** is representative of a subset of operating modes of the asset **12**. In practice, a designer may first select operating modes that will be included in the decision model **50** by means of operating mode determinator procedure **31**. The method thereafter may be comprised of a training loop wherein each possible operating mode of the asset **12** is assessed for inclusion in the decision model **50**. Thus, an embodiment of the invention creates and uses, for the purpose of asset surveillance, a coordinated collection of decision models or submodels wherein each decision model or submodel in the coordinated collection is optimized for a single operating mode or subset of operating modes of an asset.

For example, a rocket engine typically has different modes of operation typically comprised of different distribution of residuals expected from the rocket engine during, for example, startup, a percentage of steady power such as 50% steady power, 100% steady power, and shutdown operations.

Still referring to FIG. **2**, the operating mode determinator procedure **31** used to classify each observation included in the training data set **34** may be, in general, performed using

any method suitable for determining the operating mode of the asset **12** given an observation or series of observations therefrom. Methods suitable for operating mode determinator procedure **31** include, but are not limited to, a plurality of mathematical or logic sequence techniques, a plurality of expert system techniques, a plurality of fuzzy logic techniques, a plurality of determined similarity techniques, a plurality of clustering techniques, and a plurality of neural network techniques.

Hence, and in contrast to the known prior art, and in one embodiment of the invention, parameter estimation methods, fault detection methods, and fault cause or classification methods may be individually tailored for each operating mode of the asset thereby providing additional capability to reduce decision error rates for the surveillance system.

Accordingly, and in one aspect, an embodiment of the invention provides a method for performing surveillance of an asset which comprises the steps of obtaining a current set of observed signal data from the asset; performing a sequential hypothesis test for determining if the current set of observed signal data is indicative of an asset fault condition; determining an asset fault cause correlative to a determined indication of an asset fault condition; and providing an indication correlative to a determined asset fault cause for providing asset surveillance.

In another aspect, an embodiment of the invention provides a method for performing surveillance of an asset which comprises the steps of: 1) obtaining residual data correlative to asset operation; 2) fitting a mathematical model to the acquired residual data; 3) storing the mathematical model in a memory means; 3) obtaining a current set of observed signal data from the asset; 4) using the previously stored mathematical model in a sequential hypothesis test for determining if the current set of observed signal data is indicative of an asset fault condition; 5) determining an asset fault cause correlative to a determined indication of an asset fault condition; and 6) providing an indication correlative to a determined asset fault cause for providing asset surveillance.

Additionally, embodiments of the invention may include one or more of the following steps in combination with the above six steps in the above method: determining a most probable asset fault cause from a plurality of possible asset fault causes; providing a response to a provided indication correlative to a determined asset fault cause; providing a control action as the provided response to a provided indication correlative to a determined asset fault cause; and providing an alarm action as the provided response to a provided indication correlative to a determined asset fault cause.

Furthermore, embodiments of the invention may include one or more of the following steps in combination with the above six steps in the above method: obtaining residual data correlative to at least two modes of asset operation; dividing the obtained residual data into a plurality of residual data subsets each having at least one mode of asset operation associated thereto; and fitting at least one mathematical model to at least one of the plurality of residual data subsets for defining at least the one mathematical model stored in the memory.

In another aspect, an embodiment of the invention provides a method for performing surveillance of an asset comprised of the steps including: 1) obtaining residual data correlative to at least two modes of asset operation; 2) dividing the obtained residual data into a plurality of residual data subsets each having at least one mode of asset operation associated thereto; 3) fitting at least one math-

emathical model to at least one of the plurality of residual data subsets for defining at least one mathematical model stored in a memory; 4) obtaining a current set of observed signal data from the asset; 5) determining a mode of asset operation correlative to the current set of observed signal data obtained from the asset with mode determinator **31**; 6) retrieving at least one mathematical model from the memory means as a function of the determined mode of asset operation for obtaining at least one retrieved mathematical model, and 7) using at least the one retrieved mathematical model in a sequential hypothesis test for determining if the current set of observed signal data is indicative of an asset fault condition.

Additionally, embodiments of the invention may include one or more of the following steps in combination with the above seven steps in the above method: determining a most probable asset fault cause from a plurality of possible asset fault causes; providing an indication correlative to a determined most probable asset fault cause; and providing a response to a provided indication correlative to a determined most probable asset fault cause wherein the provided response is, for example, a control action and/or an alarm action.

In another aspect, an embodiment of the invention provides a computer readable medium having a program recorded thereon in which the program causes, in use, a computer running the program to execute a procedure for performing surveillance of an asset comprised of the steps including: obtaining a current set of observed signal data from the asset; performing a sequential hypothesis test for determining if the current set of observed signal data is indicative of an asset fault condition; determining an asset fault cause correlative to a determined indication of an asset fault condition; and providing an indication correlative to a determined asset fault cause for providing asset surveillance. Any type of computer readable medium may be employed and examples include floppy disks, conventional hard disks, CD-ROMS, Flash ROMS, nonvolatile ROM, and RAM.

In another aspect, an embodiment of the invention provides a system for performing surveillance of an asset, the system comprising in combination: means for obtaining residual data correlative to at least two modes of asset operation; means for dividing the acquired residual data into a plurality of residual data subsets each having at least one mode of asset operation associated thereto; means for fitting at least one mathematical model to at least one of the plurality of residual data subsets and storing at least the one mathematical model in memory **24**; means for determining a mode of asset operation correlative to the current set of observed signal data obtained from the asset, means for retrieving at least one mathematical model from said memory means as a function of the determined mode of asset operation for obtaining at least one retrieved mathematical model; and means for using at least the one retrieved mathematical model in performing a sequential hypothesis test for determining if the current set of observed signal data is indicative of an asset fault condition; means for determining a most probable asset fault cause correlative to a determined indication of an asset fault condition from a plurality of possible asset fault causes; means for providing an indication correlative to a determined most probable asset fault cause; means for providing a response to an indication correlative to a determined most probable asset fault cause wherein the means for providing a response may include means for providing a control and/or an alarm action to an indication correlative to a determined most probable asset fault cause.

In particular, and referring to FIGS. **1** through **3**, an embodiment the invention provides a surveillance system **10** for providing surveillance of an asset such as a system, a process, an apparatus and/or a data signal source **12** by providing training procedure **30** and surveillance procedure **60**.

Referring to FIGS. **3** and **4**, one embodiment of the invention provides the training procedure **30** comprised of a calibrate parameter estimator procedure **36**, a calibrate fault detector procedure **38**, and a calibrate fault cause or classification procedure **39**.

The calibrate parameter estimator procedure **36**, in one embodiment, creates one or more parameter estimation models **52**, which may include submodels, and trains each parameter estimation model/submodel by utilizing training data **34** correlative to expected and/or atypical asset operation and, for example, utilizing a multivariate state estimation technique (MSET) procedure. The calibrate parameter estimator procedure **36** further stores the one or more parameter estimation models **52** as a new parameter estimation model in a process model **50**. As noted, the process model **50** may contain one or more parameter estimation models/submodels depending upon design requirements. Additionally, each parameter estimation model contained in the process model may be created to implement any one of a plurality of parameter estimation techniques.

The calibrate fault detector procedure **38**, in one embodiment, makes use of the parameter estimation models **52** to provide estimated values for at least one signal parameter contained in the training data **34**. Generally, the calibrate fault detector procedure will create a separate and distinct fault detection model for each sensor or data signal associated with the asset being monitored for the presence of fault conditions during the surveillance procedure.

In one embodiment, the calibrate fault detector procedure **38** includes a method of fitting a mathematical model in the form of, for example, a standard Gaussian probability density function (PDF) to a training data residual distribution (computed as a function of estimated process parameters and the training data) and then adding successive higher order terms of a remainder function to the standard Gaussian PDF for the purpose of defining a general PDF that better fits the computed training data residual distribution. Other techniques for fitting a general PDF to the training data are similarly feasible and useful and include, for example, a technique for fitting a polynomial function to the training data.

Moreover, other techniques for fitting a general PDF to the training data are similarly feasible and useful and include, for example, a technique for fitting at least one mathematical function correlative to a frequency distribution to the residual data or residual data subsets. The step or procedure of fitting at least one mathematical function correlative to a frequency distribution to the residual data or residual data subsets may include a step of fitting at least one function defining a frequency curve, a frequency histogram, and/or a frequency polygon to the residual data or residual data subsets.

Hence, in one embodiment, the asset surveillance system **10** includes a fault detection model **54** of unconstrained probability density function form and having a procedure suitable for overcoming a performance limiting trade-off between probability density function modeling complexity and decision accuracy that has been unrecognized by the known prior-art. Specifically, an embodiment of the invention can employ any one of a plurality of residual error probability density function model forms, including but not

limited to a Gaussian form, thereby allowing a surveillance system to utilize the model form best suited for optimizing surveillance system performance.

Moreover, an embodiment of the invention provides a surveillance system **10** that uses a computer-assisted learning procedure to automatically derive the most suitable form of the residual error probability density function model by observation and analysis of a time sequence of process signal data and by a combination of a plurality of techniques. This ability enables surveillance to be performed by an embodiment of the invention with lower false alarm rates and lower missed alarm rates than can be achieved by the known prior-art systems and methods.

The calibrate fault cause or classification procedure **39**, in one embodiment, may be performed using any method suitable for defining a fault cause model useful for determining the presence, source or cause of an unacceptable asset status or condition on the basis of one or more fault indications. Methods suitable for the fault cause model(s)/submodel(s) creation procedure may include, but are not limited to, Bayesian belief network techniques, neural network techniques, decision tree techniques, expert system techniques, rule-based techniques, determined similarity techniques, hypothesis test techniques, and procedural logic techniques. Each fault classification model or submodel contained in the decision model may be created to implement any of a plurality of fault cause or classification techniques. Further, the fault cause technique implemented for an individual model or submodel is not constrained to be the same as the fault model technique implemented for any other model or submodel contained in the decision model.

In one embodiment, the training procedure **30** is completed when all desired training data has been used to calibrate the process model **50** or when all desired expected operating modes of the asset **12** have been assessed. At this point, the process model **50** preferably includes one or more parameter estimation models and/or submodels **52**, fault detection models and/or submodels **54**, and fault cause or classification models and/or submodels **55** for each source such as each sensor and/or data signal associated with the asset **12** being monitored for the presence of fault conditions during the surveillance procedure **60**. The process model **50** is thereafter used for performing surveillance of an asset.

Referring to FIGS. **1** through **6**, and in one embodiment of the invention, the surveillance procedure **60** is performed with a fault detection procedure **66** using an adaptive sequential probability (ASP) fault detection test **78** comprised of the general probability density function model empirically derived from the numerical analysis of the asset training data.

In one embodiment, the surveillance procedure **60** acquires and digitizes current asset data with procedure **62** and then estimates process parameters as a function of the acquired digitized current asset data and the parameter estimation model(s) obtained from the calibrate parameter estimator procedure. Then, fault detection is determined by first computing data residuals, process **76**, as a function of the estimated process parameters and the acquired digitized current asset data and then performing the ASP test(s) **78** as a function of the fault detection models and thus, as a function of the fitted general PDF obtained in the calibrate fault detector procedure. Each ASP test returns one of three possible states: a not null state which rejects the probability that a null hypothesis is true and accepts an alternative hypothesis correlative to unexpected operation of the asset; a null state which accepts the probability that a null hypothesis is true and excepts the null hypothesis correlative to

expected operation of the asset; and an in-between state which excepts neither the null hypothesis nor the alternative hypothesis as being true and requires more data to reach a conclusion.

In one embodiment, the results of the fault detection procedure are then analyzed using an asset fault cause procedure **84** for determining an asset fault cause to a determined indication of an asset fault condition obtained when the analysis determines that the results indicate unexpected operation of the asset. Next, and in one embodiment, an indication procedure **86** provides an indication correlative to a determined asset fault cause and a response procedure **88** provides an action such as an alarm, control and/or a communication action for providing asset surveillance.

Process Model Training Procedure:

More specifically, and referring to FIGS. **1** and **3**, the training procedure **30** of the system **10** includes a method and apparatus for training or preparing the process model **50** using historical operating data from the asset **12** that has been acquired by the data acquisition means **20** using any combination of conventional electronic data acquisition hardware and signal processing software as is well known in the art. The historical operating data is acquired in digital format and stored in memory means **24** using a data storage procedure **32** to create a training data set **34**.

The training data set **34** includes at least N discrete observations of the asset **12** wherein each single observation, herein denoted Xobs, is comprised of a vector of data values for each signal parameter to be included in the process model **50**. For the purposes of the training procedure **30**, the number of observations, N, acquired is at least great enough to adequately bound the operating state space of the asset **12**. Thus, the training data set **34** provides a representative sample of the signals produced by the asset **12** during at least one normal modes of operation.

Upon acquiring the training data set **34**, the unique training procedure **30** can be implemented.

The unique training procedure **30** is comprised of a calibrate parameter estimator procedure **36** and a calibrate fault detector procedure **38**. The calibrate parameter estimator procedure **36** creates the parameter estimation model **52** and trains the parameter estimation model **52** using the training data **34**. The calibrate parameter estimator procedure **36** further stores this model as a new parameter estimation model **52** in the process model **50**.

The process model **50** may contain one or more parameter estimation models **52** depending upon the requirements of the approach taken by a designer. Continuing to refer to FIG. **3**, the training procedure **30** may be, in general, performed using any parameter estimation method suitable for defining a parameter estimation model **52** useful for estimating the values of one or more process signals. Methods suitable for the calibrate parameter estimator procedure **36** include, but are not limited to, a plurality of redundant sensor techniques, a plurality of multivariate state estimation techniques, a plurality of kernel regression techniques, a plurality of neural network techniques, a plurality of mathematical model techniques, a plurality of autoregressive moving average techniques, and a plurality of Kalman filter techniques. Each parameter estimation model **52** contained in the process model **50** may be created to implement any one of a plurality of parameter estimation techniques. Further, the parameter estimation technique implemented for an individual parameter estimation model **52** is not constrained to be the same as the parameter estimation technique implemented for any other parameter estimation model **52** contained in the process model **50**.

One example of the calibrate parameter estimator procedure 36 would be the computation of a bias term between two redundant sensors wherein the parameter estimation model 52 used for estimating the value of one sensor during the surveillance procedure 60 consisted of summing the observed value of a second redundant sensor with a bias term computed during the training procedure 30 as the mean difference between the two sensor values over the training data set 34. More sophisticated examples of the training procedure 30 using multivariate state estimation techniques will be described herein below.

Still referring to FIG. 3, the calibrate fault detector procedure 38 makes use of the parameter estimation models 52 to provide estimated values for at least one signal parameter contained in the training data. Generally, the calibrate fault detector procedure 38 will create a separate and distinct fault detection model 54 for each sensor or data signal of asset 12 to be monitored for the presence of fault conditions during the surveillance procedure 60. As delineated hereinabove, one embodiment of the invention provides the fault detection model 54 as an element of the process model 50 for the asset 12 that is derived during the training procedure 30. In particular, one embodiment of the invention encompasses a statistical hypothesis test type of fault detection model 54 having novel and unique characteristics and calibration procedures described herein including but not limited to having a probability density function model empirically derived from a numerical analysis of asset operating data.

Continuing to refer to FIG. 3, the calibrate fault cause or classification procedure 39, in one embodiment, may be performed using any method suitable for defining a fault cause model useful for determining the presence, source or cause of an unacceptable asset status or condition on the basis of one or more fault indications. Methods suitable for the fault cause model(s)/submodel(s) creation procedure may include, but are not limited to, Bayesian belief network techniques, neural network techniques, decision tree techniques, expert system techniques, rule-based techniques, determined similarity techniques, hypothesis test techniques, and procedural logic techniques. Each fault classification model or submodel contained in the decision model may be created to implement any of a plurality of fault cause or classification techniques. Further, the fault cause technique implemented for an individual model or submodel is not constrained to be the same as the fault model technique implemented for any other model or submodel contained in the decision model.

Continuing to refer to FIG. 3, and in one embodiment, the training procedure 30 is completed when all desired training data has been used to calibrate the process model 50 or when all desired expected operating modes of the asset 12 have been assessed. At this point, the process model 50 preferably includes one or more parameter estimation models and/or submodels 52, fault detection models and/or submodels 54, and fault cause or classification models and/or submodels 55 for each source such as each sensor and/or data signal associated with the asset 12 being monitored for the presence of fault conditions during the surveillance procedure 60. The process model 50 is thereafter used for performing surveillance of an asset.

Referring to FIG. 4, the training procedure 30 is illustrated in additional detail. A designer 16 initializes the calibrate parameter estimators procedure 36 by specifying a set of parameter estimator methods and settings 40. The parameter estimator methods and settings 40 are then used to operate on the training data 34 via a nominal signal

behavior modeling procedure 42, for example using an MSET training procedure as described herein in detail, in order to create the parameter estimation models 52, which are stored in the process model 50.

Still referring to FIG. 4, the training procedure 30 next proceeds to the calibrate fault detectors procedure 38 wherein the parameter estimation models 52 are an input to the procedure. The designer 16 initializes the calibrate fault detectors procedure 38 by specifying a set of fault detector methods and settings 46. Next, the estimate process parameters procedure 64 operates the parameter estimation models 52 over the training data 34 to generate an estimated value for each monitored signal value contained in the training data 34. It is important that the estimate process parameters procedure 64 used in the calibrate fault detectors procedure 38 be the same estimate process parameters procedure 64 that will later be used in the surveillance procedure 60 (reference FIGS. 1 and 2 for surveillance procedure 60). Next, a compute training data residuals procedure 44 calculates the training data residuals for each monitored signal, which are calculated as the difference between the training data value and the corresponding estimated data value for each monitored signal. The training data residuals are next used by a compute nominal residual probability density function (PDF) procedure 48 to create a fault detection model 54 for each monitored signal. In one embodiment of the invention, the fault detection models 54 is typically comprised of mathematical descriptions of the probability density function that best characterizes or best fits the training data residual for the monitored signal. The training data is presumed to accurately characterize the expected normal operating states of the asset 12. Therefore, the training data residuals are characteristic of the expected normal deviations between the observed signal values and the values estimated using the parameter estimation models 52. The fault detection models 54 are stored in the process model 50 thereby completing the training procedure.

In one embodiment, the system 10 computes the fault detection models 54 by the means of the compute nominal residual probability density function (PDF) procedure 48. As will be described mathematically herein below, the compute nominal residual probability density function (PDF) procedure 48 fits a general open-ended probability function to the training data residuals and employs this fitted function when implementing a herein named Adaptive Sequential Probability (ASP) method and system for computing the fault detection model 54 and thereafter employing said fault detection model 54 for the purpose of performing a fault detection procedure 66 of the surveillance procedure 60.

Surveillance Procedure:

Referring to FIG. 5, the surveillance procedure 60 is comprised of acquiring successive vectors of current operating data and determining for each such observation vector whether the current operating data is indicative of a fault or failure of the asset 12. The surveillance procedure 60 further includes implementing an alarm or control action 70 for the purpose of notifying an operator and/or taking a corrective action in response to a detected fault or failure of the asset 12. The surveillance procedure 60 is in general an open-ended data acquisition and analysis loop that continues until such time as the operator chooses to terminate the surveillance 74.

More specifically, and referring to FIG. 5, the surveillance procedure 60 begins 58 with an acquire current operating data procedure 62 that employs the data acquisition and digitization means 20 (FIG. 1) to acquire a current set of signal data from the monitored asset 12. The current set of

signal data is provided to the estimate process parameters procedure **64** that uses the parameter estimation models **52** to estimate values for one or more of the current signal data values.

The observed and estimated data are next provided to a perform fault detection procedure **66** that uses one or more of the fault detection models and/or submodels **54** to perform a fault found procedure for determining whether a fault is found in the current operating data. If a fault is found is true, the fault cause procedure **84** determines a cause to the determined asset fault condition obtained when the analysis determines that the results indicate unexpected operation of the asset. Next, and in one embodiment, an indication procedure **86** provides an indication correlative to a determined asset fault cause and a response procedure **88** provides an action such as an alarm, control, and/or a communication action for providing asset surveillance. For example, if a fault is found is true the cause can be determined and indicated for providing an alarm and/or control action is taken by for example, an operator console **80** and/or an automated process control system or means **82**.

Upon completing the fault found procedure **68**, the surveillance procedure **60** then repeats for the next available set of signal data for as long as a surveillance complete decision procedure **72** determines that additional surveillance data are available or terminates at surveillance complete step **74** when no more surveillance data are available or when terminated by an operator or other means.

Referring now to FIG. **6**, the perform fault detection procedure **66** of surveillance procedure **60** is illustrated in additional detail. For each current set of signal data values acquired the estimate process parameters procedure **64** uses the parameter estimation models **52** to estimate values for one or more of the current signal data values. The compute data residuals procedure **76** performs a mathematical transformation on the acquired and estimated values to produce a current set of residual data values. Said mathematical transformation is most typically a simple mathematical difference, however, any appropriate transformation may be used including transformations that smooth and/or remove correlated and uncorrelated noise from the residual data values. The residuals produced and transformed in the compute data residuals procedure **76** are next processed by a perform ASP tests procedure **78** that uses the fault detection models **54** to produce a ASP fault indication. Next, the fault found decision procedure **68** is performed on the basis of the ASP fault indication results produced by the perform ASP tests procedure **78**. The fault found decision procedure **68** may have any one of a plurality of structures and procedures, including but not limited to methods and systems to perform false alarm filtering by means of observing a time series of ASP fault indication results for the purposes of determining the actual presence of a fault. In one embodiment of the invention, a conditional probability fault found decision procedure **68** is used to perform said false alarm filtering.

Continuing to refer to FIG. **6**, the estimate process parameters procedure **64** uses the parameter estimation models **52** to estimate values for one or more of the current signal data values wherein the parameter estimation method used may have any one of a plurality of structures and procedures, including but not limited to, a plurality of redundant sensor techniques, a plurality of multivariate state estimation techniques, a plurality of kernel regression techniques, a plurality of neural network techniques, a plurality of mathematical

model techniques, a plurality of autoregressive moving average techniques, and a plurality of Kalman filter techniques.

Referring to FIG. **7**, one possible redundant sensor technique for the estimate process parameters procedure **64** is illustrated. The acquire current operating data procedure **62** is used to acquire current signal data values from signals **14** monitored from asset **12** via sensors **18**. The estimated value for a first redundant sensor signal is computed using a mathematical transformation on the acquired value of a second redundant sensor signal. Said mathematical transformation is the estimate process parameters procedure **64** that in this case may be a simple equivalence or may include biasing, de-noising or other signal processing. The compute data residuals procedure **76** is then performed followed by the perform ASP tests procedure **78** as described hereinabove and further delineated hereinbelow.

Referring to FIG. **8**, one possible multivariable parameter estimation technique for the estimate process parameters procedure **64** is illustrated. The acquire current operating data procedure **62** is used to acquire current signal data values from signals **14** monitored from asset **12** via sensors **18**. The estimated value for one or more sensor signals is computed using a mathematical transformation on the acquired values of one or more sensor signals. Said mathematical transformation is the estimate process parameters procedure **64** that in this case may implement any feasible parameter estimation technique or procedure, including but not limited to a plurality of multivariate state estimation techniques, a plurality of kernel regression techniques, a plurality of neural network techniques, a plurality of mathematical model techniques, and a plurality of Kalman filter techniques. The compute data residuals procedure **76** is then performed followed by the perform ASP tests procedure **78** as described hereinabove and further delineated hereinbelow.

Referring again to FIG. **6**, one usefulness of an embodiment of the invention is, inter alia, the improvement achieved in the accuracy of the fault decision procedure **68** that results from the improvement achieved in the accuracy of perform fault detection procedure **66** made possible by the novel perform ASP tests procedure **78**. Improving the accuracy of the fault decision procedure **68** accomplishes a reduction in the number of false alarms sent to a process operator or control system that can in turn result in an erroneous alarm or control action by the alarm or control action procedure **70**. Further, improving the accuracy of the fault decision procedure **68** accomplishes a reduction in the number of missed alarms thereby accomplishing more timely alarm or control action by the alarm or control action procedure **70**. One embodiment of the invention thereby enables improved operating safety, improved efficiency and performance, and reduced maintenance costs for a wide variety of industrial, utility, business, medical, transportation, financial, and biological processes and apparatuses wherein such process and/or apparatus asset **12** has at least one characteristic data signal suitable for surveillance.

In use and operation, FIGS. **1** through **9** show an embodiment of the system **10** employing the fault detection model **54** contained in the process model **50**, the accompanying fault detection procedure **66** having the perform ASP tests procedure **78**, and the fault cause or classification model **55**. In a typical surveillance procedure, the asset **12** is the source of at least one signal **14** that is acquired and digitized using conventional data acquisition means **20** for providing the data acquisition procedure for the purpose of computer-assisted surveillance. The digitized signal data is generally

evaluated using computer 22 having computer software modules implementing the estimate process parameters procedure 64, the perform fault detection procedure 66, and the fault cause or classification procedure 84. The estimate process parameters procedure 64 is used to produce an estimated signal value for at least one process signal 14 emanating from the asset 12. The estimate process parameters procedure 64 in general makes use of the process model 50 stored in a memory means 24 associated with the computer 22 to produce the estimated signal values. The estimated signal values are then generally evaluated using the perform fault detection procedure 66 to identify faults or operating anomalies associated with the asset 12. When a fault is found, the results are thereafter communicated to for evaluation to the asset fault cause or classification procedure 84 for determining an asset fault cause or classification to a determined indication of an asset fault condition obtained when the analysis determines that the results indicate unexpected operation of the asset. Next, and in one embodiment, an indication procedure 86 provides an indication correlative to a determined asset fault cause and a response procedure 88 provides an action such as an alarm, control and/or a communication action for providing asset surveillance. For example, when a fault is found and a cause is determined, an indication can be provided by, for example, a conventional communications means 26 (as is known to those having ordinary skill in the art, and informed by the present disclosure) to the operator console 80 and/or to the asset control means or system 82 for possible alarm and/or control action.

The computer 22 along with the associated memory means 24 can also be employed to perform the training and surveillance procedures 30, 60 as delineated hereinabove and to produce and store all the desired data associated with these procedures, for example, the historical training data, designer defined settings, and the process model.

Multivariate State Estimation Technique (MSET) for Estimate Process Parameters Procedure:

In one embodiment of the invention, the estimate process parameters procedure 64 uses a multivariate state estimation technique (MSET) procedure having an MSET parameter estimation model 52 structure. The US Department of Energy's Argonne National Laboratory originally developed the implementation of MSET described herein for surveillance of sensors and components in nuclear power plant applications. However, other implementations of a multivariate state estimation technique are possible and useful in conjunction with the system 10. MSET is in general a statistically derived parameter estimation algorithm that uses advanced pattern recognition techniques to measure the similarity or overlap between signals within a defined domain of asset operation (set of asset operating states). MSET "learns" patterns among the signals by numerical analysis of historical asset operating data. These learned patterns or relationships among the signals are then used to identify the learned state that most closely corresponds with a new signal data observation. By quantifying the relationship between the current and learned states, MSET estimates the current expected response of the asset signals. MSET then uses threshold comparisons or a form of statistical hypothesis testing, such as a Sequential Probability Ratio Test (SPRT) as disclosed in U.S. Pat. No. 5,459,675 which is hereby incorporated by reference in its entirety or the Adaptive Sequential Probability (ASP) procedure to compare the current estimated value of a signal with its observed value. The MSET procedure provides an accurate and widely applicable method to estimate the operating signal

values for an asset. However, other implementations of the parameter estimation procedure are possible and useful in conjunction with system 10.

An MSET model is created for the asset 12 using the MSET training algorithms to learn the inherent data relationships within a set of historical asset operating data. The trained MSET model is then used with the MSET parameter estimation and fault detection algorithms to perform the process surveillance function when presented with a new observation of signal data values. The following sections will first provide a mathematical overview of the MSET algorithms and procedures useful for training a parameter estimation model and for using this trained model for process surveillance. The description is followed by a detailed description of a one embodiment of the invention using a novel Adaptive Sequential Probability (ASP) procedure for fault detection during process surveillance.

MSET Training and Parameter Estimation Procedures:

The MSET methods are generally described in the following two US Government documents produced and maintained by the US Department of Energy's Argonne National Laboratory, Argonne, Ill., disclosure of which is incorporated in its entirety herein by reference.

J. P. Herzog, S. W. Wegerich, R. M. Singer, and K. C. Gross, "Theoretical Basis of the Multivariate State Estimation Technique (MSET)," Argonne National Laboratory, ANL-NT-49, December 1997.

J. P. Herzog, S. W. Wegerich, K. C. Gross, and R. M. Singer, "MSET: Code Structure and Interface Development Guide," ANL-NT-48, August 1997.

The MSET algorithm uses pattern recognition with historical operating data from an asset to generate a parameter estimation model. If data is collected from a process over a range of operating states, this data can be arranged in matrix form, where each column vector (a total of m) in the matrix represents the measurements made at a particular state. Thus, this matrix will have the number of columns equal to the number of states at which observations were made and the number of rows equal to the number of measurements (a total of n signal data values) that were available at each observation. We begin by defining the set of measurements taken at a given time t_j as an observation vector $X(t_j)$,

$$\vec{X}(t_j) = [x_1(t_j), x_2(t_j), \dots, x_n(t_j)]^T \quad (E1)$$

where $x_i(t_j)$ is the measurement from signal i at time t_j . We then define the data collection matrix as the process memory matrix D:

$$\vec{D} = \begin{bmatrix} d_{1,1} & d_{1,2} & \dots & d_{1,m} \\ d_{2,1} & d_{2,2} & \dots & d_{2,m} \\ \vdots & \vdots & \vdots & \vdots \\ d_{n,1} & d_{n,2} & \dots & d_{n,m} \end{bmatrix} \equiv [\vec{X}(t_1), \vec{X}(t_2), \dots, \vec{X}(t_m)] \quad (E2)$$

Each of the column vectors ($X(t_j)$) in the process memory matrix represents an operating state of the asset. Any number of observation vectors can be assigned to the process memory matrix. Training an MSET model includes collecting enough unique observation vectors from historical operation of the asset during normal conditions such that the process memory matrix encompasses the full dynamic operating range of the asset. Computation of the D matrix is the first of three steps in the method for training an MSET model based on historical operating data.

One of at least two algorithms is used by MSET to select the vectors in the D matrix. The MinMax algorithm extracts vectors that bound the vector space defined by the training data and returns the smallest process memory matrix that will produce an effective system model (see also U.S. Pat. No. 5,764,509 which is hereby incorporated by reference in its entirety). A vector ordering algorithm selects and includes representative vectors from the inner regions of the vector space producing a more accurate system model.

Once the process memory matrix has been constructed, MSET is used to model the dynamic behavior of the system. For each current observation of the system (Xobs), MSET compares the observation vector to the stored operating states to calculate an estimate of the process parameter values. The parameter estimate of the current process state (Xest) is an n-element vector that is given by the product of the process memory matrix and a weight vector, W:

$$\vec{X}_{est} = \bullet \vec{W} \quad (E3)$$

The weight vector represents a measure of similarity between the estimate of the current state and the process memory matrix. To obtain the weight vector, we minimize the error vector, R, where:

$$\vec{R} = \vec{X}_{obs} - \vec{X}_{est} \quad (E4)$$

The error is minimized for a given state when:

$$\vec{W} = (\vec{D}^T \otimes \vec{D})^{-1} \bullet (\vec{D}^T \otimes \vec{X}_{obs}) \quad (E5)$$

This equation represents a “least squares” minimization when the pattern recognition operator \otimes is the matrix dot product. Several advanced pattern recognition operators have been defined that provide excellent parameter estimation performance. Pattern recognition operators used by MSET include, but are not limited to, the System State Analyzer (SSA) method (see also U.S. Pat. No. 4,937,763 which is hereby incorporated by reference in its entirety), the Bounded Angle Ratio Test (BART) method (see also U.S. Pat. No. 5,987,399 which is hereby incorporated by reference in its entirety), the Vector Pattern Recognizer (VPR) method, the Vector Similarity Evaluation Technique (VSET) method, and the Probabilistic State Estimation Method (PSEM).

Once the weight vector is found, the resulting current state estimate of the system (i.e., the parameter estimate vector) is given by:

$$\vec{X}_{est} = \bullet (\vec{D}^T \otimes \vec{D})^{-1} \bullet (\vec{D}^T \otimes \vec{X}_{obs}) \quad (E6)$$

The first application of the pattern recognition operator in equation E6 ($\vec{D}^T \otimes \vec{D}$) involves a comparison between the row vectors in the \vec{D}^T matrix and each of the column vectors in the D matrix. If we define $G = \vec{D}^T \otimes \vec{D}$, then G, the similarity matrix, is an m by m matrix. The element in the i-th row and j-th column of the matrix ($g_{i,j}$) represents a measure of the similarity between the i-th and j-th column vectors (i.e., memorized states) in the process memory matrix. The second application of the pattern recognition operator in equation E6 ($\vec{D}^T \otimes \vec{X}_{obs}$) involves a comparison between the row vectors in the \vec{D}^T matrix and each of the elements in the observation vector Xobs. If we define $A = \vec{D}^T \otimes \vec{X}_{obs}$, then A, the similarity vector, is an m by 1 vector. Each element in the similarity vector is a measure of the similarity between the observation vector and the i-th column vector (i.e., memorized state) in the process memory matrix.

Note that the similarity matrix is a function of the process memory matrix only. Thus, the similarity matrix and its

inverse $G_{inv} = (\vec{D}^T \otimes \vec{D})^{-1}$ can be calculated as soon as the process memory matrix has been derived thereby making the application of MSET to an on-line surveillance system more computationally efficient. Computation of the G_{inv} matrix initializes the parameter estimation model and completes the second of three steps in the procedure for training an MSET model based on historical operating data.

The third and final step in the MSET training procedure includes analyzing the historical training data using equation E4 to produce a residual error vector, R, for each observation vector in the training data. The collection of residual error vectors comprises the training data residuals necessary for training the fault detection model 54 using any one of a plurality of techniques, including but not limited to the SPRT technique, and the novel ASP technique.

The Sequential Probability Ratio Test (SPRT) technique is a statistical hypothesis test fault detection algorithm historically used for MSET process surveillance. The SPRT technique is described in U.S. Pat. No. 5,459,675, which is incorporated herein by reference in its entirety. The SPRT analyzes a sequence of discrete residual error values from a signal to determine whether the sequence is consistent with normal signal behavior or with some other abnormal behavior. When the SPRT reaches a decision about the current signal behavior, e.g., that the signal is behaving normally or abnormally, the decision is reported and the test continues analyzing the signal data. For any SPRT, signal behavior is defined to be normal when the signal data adheres to a Gaussian probability density function (PDF) with mean 0 and variance σ^2 . Normal signal behavior is referred to as the null hypothesis, H_0 . MSET employs four specific SPRT hypothesis tests. Each test determines whether current signal behavior is consistent with the null hypothesis or one of four alternative hypotheses. The four tests are known as the positive mean test, the negative mean test, the nominal variance test, and the inverse variance test. For the positive mean test, the corresponding alternative hypothesis, H_1 , is that the signal data adhere to a Gaussian PDF with mean +M and variance σ^2 . For the negative mean test, the corresponding alternative hypothesis, H_2 , is that the signal data adheres to a Gaussian PDF with mean -M and variance σ^2 . For the nominal variance test, the corresponding alternative hypothesis, H_3 , is that the signal data adheres to a Gaussian PDF with mean 0 and variance $V\sigma^2$. For the inverse variance test, the corresponding alternative hypothesis, H_4 , is that the signal data adheres to a Gaussian PDF with mean 0 and variance σ^2/V . The user-assigned constants M and V control the sensitivity of the tests.

Limitations of the SPRT Fault Detector Training and Surveillance Method and System:

One significant shortcoming of the SPRT technique is found in the assumptions underlying its mathematical formulation. Specifically, the SPRT technique presumes that the residual error signals adhere to a Gaussian probability density function. For residual error signals that are non-Gaussian, the fault detector false alarm rates and/or missed alarm rates specified by the designer are not accomplished by the SPRT procedure thereby degrading the fault decision accuracy of the asset control and/or surveillance system. The novel ASP technique of one embodiment of the invention specifically removes the assumption that the residual error signals adhere to a Gaussian probability density function. The ASP technique implements any one of a plurality of methods to numerically fit a probability density function to the observed residual error signal distribution that is characteristic of normal asset operation. The derived probability

density function is then used to perform a dynamic statistical hypothesis test thereby achieving the fault detector false alarm and missed alarm rates specified by the designer and improving the fault decision accuracy of the asset control and/or surveillance system.

Fault Detection Using Statistical Hypothesis Test Procedures:

The general theory underlying the statistical hypothesis test will now be delineated below. Next, the SPRT implementation of a dynamic statistical hypothesis test will be described. Finally, the novel ASP implementation of a dynamic statistical hypothesis test for non-Gaussian residual error signals will be delineated in detail along with a delineation of its reduction to practice.

Bayes' Rule for a Single Observation:

Statistical decision problems in which there are just two possible outcomes constitute an important class called binary hypothesis testing problems. The possible states of a system are called hypotheses and each individual state of the system is termed a simple hypothesis. A simple hypothesis is a complete specification of a probability distribution for the system (i.e., the distribution of possible observations or samples from the system). The "hypothesis" being tested is that the particular distribution is the correct one.

The basic operation in a binary hypothesis test is to evaluate the veracity of a hypothesis, H, given a piece of evidence or observation, e, from the system being studied. Because of the unpredictability or element of chance inherent in the system, the test deals with the probabilities that events occur or that hypotheses are true. The probability that a hypothesis is true given a piece of evidence is written as P(H|e). The notation identifies a conditional probability—namely the probability that the hypothesis is true under the condition that the event has occurred with absolute certainty. Bayes' well known inversion rule, as described in Probabilistic Reasoning in Intelligent Systems: Networks of Plausible Inference, by Judea Pearl, Morgan Kaufmann Publishers, Inc., San Mateo, Calif., 1988, Second Edition at pages 29 through 39, provides a means for evaluating the conditional probability of a hypothesis, P(H|e), which is also known as the posterior probability,

$$P(H|e) = \frac{P(e|H)P(H)}{P(e)} \tag{E7}$$

P(e|H) is the probability that the observation would occur if the hypothesis is true. P(H) is the probability that the hypothesis is true before any observations of the system have been made, also known as the prior probability. The denominator, P(e), is the unconditional probability that the observation occurs.

Basic axioms of set theory can be used to prove the following identity for two events R and S: $R=(R \cap S) \cup (R \cap \neg S)$, where $\neg S$ is the converse of event S. In probability theory, the analog of this identity is

$$P(R)=P(R,S)+P(R, \neg S), \tag{E8}$$

where the notation P(R,S) is used represent the probability of the joint event $R \cap S$. The multiplication law states that the probability of two events occurring jointly can be expressed as a function of the conditional probability of one event based on the other,

$$P(R,S)=P(R | S)P(S) \tag{E9}$$

If R and S are independent events, then $P(R|S)=P(R)$ and the multiplication law simplifies to $P(R,S)=P(R)P(S)$.

Bayes' rule can be simplified by eliminating the denominator in equation E7. Combining equations E8 and E9, and substituting e for R and H for S, the denominator can be written as

$$P(e)=P(e|H)P(H)+P(e|\neg H)P(\neg H) \tag{E10}$$

Therefore, Bayes' rule becomes

$$P(H|e) = \frac{P(e|H)P(H)}{P(e|H)P(H) + P(e|\neg H)P(\neg H)} \tag{E11}$$

The power of Bayesian techniques comes primarily from the fact that in causal reasoning the relationship P(e|H) is local, namely, given that H is true, the probability of e can be estimated naturally and is not dependent on many other propositions. For instance, given that the measurements from an experiment adhere to a particular PDF, the probability that any single measurement will occur is easily computed.

The complementary form of Bayes' rule provides the posterior probability for the converse of the hypothesis. It is evaluated by substituting $\neg H$ for each instance of H in equation E11 and noting that $\neg(\neg H)=H$:

$$P(\neg H | e) = \frac{P(e|\neg H)P(\neg H)}{P(e|H)P(H) + P(e|\neg H)P(\neg H)} \tag{E12}$$

An alternate form of Bayes' rule is produced by dividing it (i.e., equation E11) with its complementary form (i.e., equation E12) to obtain

$$\frac{P(H|e)}{P(\neg H|e)} = \frac{P(e|H)P(H)}{P(e|\neg H)P(H)P(\neg H)} \tag{E13}$$

This form of Bayes' rule is further manipulated by first defining the prior odds on hypothesis H as

$$O(H) = \frac{P(H)}{P(\neg H)}, \tag{E14}$$

the likelihood ratio as

$$L(e|H) = \frac{P(e|H)}{P(e|\neg H)}, \tag{E15}$$

and the posterior odds on H as

$$O(H|e) = \frac{P(H|e)}{P(\neg H|e)} \tag{E16}$$

Bayes' rule then specifies the posterior odds as the product of the likelihood ratio and the prior odds,

$$O(H|e)=L(e|H)O(H). \tag{E17}$$

Bayes' Rule for a Time Series:

The formulation above specifies Bayes' rule for a single observation and a binary hypothesis. For the application of binary hypothesis tests to real world signals, the formulation must be able to handle a sequence of discrete observations. This is accomplished by beginning with a single observation and successively updating Bayes' rule for each successive observation. Let the sequence $\{Y_n\}$ be an ordered set of n elements, $\{Y_n\}=y_1, y_2, \dots, y_n$, in which the elements are observations of the signal made at n discrete moments in time such that $t_1 < t_2 < \dots < t_n$. Bayes' rule for the first observation (y_1) in the time series is

$$P(H | y_1) = \frac{P(y_1 | H)P(H)}{P(y_1)} \tag{E18}$$

Adding the second observation from the time series, Bayes' rule for the joint event $y_1 \cap y_2$ is

$$P(H | y_1, y_2) = \frac{P(y_1, y_2 | H)P(H)}{P(y_1, y_2)} \tag{E19}$$

With the aid of the multiplication law (equation E9), the joint event probabilities are converted to conditional probabilities so that the right hand side of this equation can be rewritten as

$$P(H | y_1, y_2) = \frac{P(y_2 | y_1, H)P(y_1 | H)P(H)}{P(y_2 | y_1)P(y_1)} \tag{E20}$$

Note that the probability of the joint event $y_1 \cap y_2$ is written as $P(y_1, y_2) = P(y_2 | y_1)P(y_1)$ instead of the equivalent $P(y_1, y_2) = P(y_1 | y_2)P(y_2)$ because of the temporal dependency of the data. The second form of the multiplication law reduces to $P(y_1, y_2) = P(y_1)P(y_2)$ because earlier events (e.g., y_1) in a time series cannot be dependent on later events (e.g., y_2).

The multiplication law is used for each successive observation in the time series to derive the form of Bayes' rule for the joint event $(y_1 \cap y_2 \cap \dots \cap y_n)$:

$$P(H | y_1, y_2, \dots, y_n) = \frac{P(y_n | y_{n-1}, \dots, y_1, H) \dots P(y_2 | y_1, H)P(y_1 | H)P(H)}{P(y_n | y_{n-1}, \dots, y_1) \dots P(y_2 | y_1)P(y_1)} \tag{E21}$$

Since the probabilities for each of the later observations in the time series are conditioned on earlier observations, Bayes' rule is difficult to solve in the general case. But if the observations in the series are independent of each other (i.e., random), then the probabilities will be dependent on the hypothesis only. In this case the conditional probability for the ith observation, $P(y_i | y_{i-1}, \dots, y_1, H)$, is simply $P(y_i | H)$. Thus, Bayes' rule for independent observations in a time series is

$$P(H | y_1, y_2, \dots, y_n) = \frac{P(y_n | H) \dots P(y_1 | H)P(H)}{P(y_n) \dots P(y_1)} \tag{E22}$$

-continued

$$= P(H) \prod_{i=1}^n \frac{P(y_i | H)}{P(y_i)}$$

If an explicit time dependency can be established for the observations in the time series (i.e., a function is found that relates earlier events to later events), then the general form of Bayes' rule (equation E21) can be used to develop failure detection models for serially-correlated signals. However, the residual signals formed by the difference between the observed and estimated signal values are in general random signals; thus, Bayes' rule for random time series is used as the basis for the fault detection models.

Dividing by the complementary form of Bayes' rule for random time series and utilizing the definition of the posterior odds, prior odds, and likelihood ratio from above, an alternate form of Bayes' rule for a time series is developed:

$$O(H | y_1, y_2, \dots, y_n) = O(H) \prod_{i=1}^n L(y_i | H) \tag{E23}$$

If we take the logarithm of this equation, the incremental nature of Bayesian formulation becomes more apparent. Equation E24 shows the log of the likelihood ratio as a weight, carried by each observation in the sequence, which additively sways the belief in the hypothesis one way or the other.

$$\ln[O(H | y_1, y_2, \dots, y_n)] = \ln[O(H)] + \sum_{i=1}^n \ln[L(y_i | H)] \tag{E24}$$

Sequential Hypothesis Tests:

Wald first presented and studied the following sequential test of a simple hypothesis against a simple alternative, as described in Sequential Analysis, by A. Wald, John Wiley and Sons, Inc., New York, 1947. Let H_0 be a specific probability density function called the null hypothesis. Then the probability that the time series $\{Y_n\}$ contains samples drawn from H_0 is $P(y_1, y_2, \dots, y_n | H_0)$. Let H_j be a different probability density function called the alternative hypothesis. Then the probability that the time series $\{Y_n\}$ contains samples drawn from H_j is $P(y_1, y_2, \dots, y_n | H_j)$. Two threshold limits A and B are chosen, with $A < B$, and after each observation in the series the following statistic ($\Lambda_{j,n}$) is calculated:

$$\Lambda_{j,n} = \frac{P(y_1, y_2, \dots, y_n | H_j)}{P(y_1, y_2, \dots, y_n | H_0)} \tag{E25}$$

The test procedure is then as follows. If the statistic is greater than or equal to the upper threshold limit (i.e., $\Lambda_{j,n} \geq B$), then a decision is made to accept hypothesis H_j as true. If the statistic is less than or equal to the lower threshold limit (i.e., $\Lambda_{j,n} \leq A$), then a decision is made to accept hypothesis H_0 as true. If the statistic falls between the two limits (i.e., $A < \Lambda_{j,n} < B$), then neither hypothesis can yet be accepted to be true and sampling continues. If the

observations in the series are independent random variables, then the test statistic reduces to a product of conditional probabilities:

$$\Lambda_{j,n} = \prod_{i=1}^n \frac{P(y_i | H_j)}{P(y_i | H_0)} \tag{E26}$$

In the sequential hypothesis tests, the logarithm of the test statistic is often easier to work with:

$$\ln \Lambda_{j,n} = \sum_{i=1}^n \ln \left[\frac{P(y_i | H_j)}{P(y_i | H_0)} \right] \tag{E27}$$

The sequential hypothesis test consists of calculating the logarithm of the test statistic for each observation in the series and comparing the result to the logarithms of the lower and upper threshold limits.

The statistic in the sequential hypothesis test is a product of a sequence of likelihood ratios. Each term in the product is the ratio of a probability conditioned on one hypothesis to a probability conditioned on a second hypothesis. The difference between the likelihood ratios in the sequential hypothesis tests and those in Bayes' rule (see equations E15 and E23), is that in Bayes' rule the probabilities are conditioned on a hypothesis and its converse, whereas in the sequential hypothesis tests the probabilities are conditioned on two hypotheses from a set of related hypotheses. In principle, the two hypotheses in the sequential hypothesis tests could be the converse of each other (i.e., the set contains two elements), but in practice the hypotheses are selected from an infinite set of exhaustive and mutually exclusive hypotheses. For instance, suppose the null hypothesis is a Gaussian PDF with a mean of 1 and a variance 10. Then a sequential hypothesis test can be defined in which the alternate hypothesis is any Gaussian PDF in which the mean is not 1 and/or the variance is not 10.

It is informative to compare the sequential hypothesis tests to Bayes' rule for a time series. Given a null hypothesis H_0 and an alternative hypothesis H_j , the likelihood ratio for an observation e conditioned on the two hypotheses is defined as

$$L_j(e | H_0) = \frac{P(e | H_j)}{P(e | H_0)} \tag{E28}$$

The subscripts emphasize the fact that the two hypotheses are selected from an infinite set of related hypotheses. The prior odds for the two hypotheses are defined as

$$O_j(H_0) = \frac{P(H_j)}{P(H_0)} \tag{E29}$$

while the posterior odds are defined as

$$O_j(H_0 | e) = \frac{P(H_j | e)}{P(H_0 | e)} \tag{E30}$$

Assuming the observations in the time series are independent, then Bayes' rule conditioned on hypothesis H_j (i.e., equation E22 with the symbol H replaced by H_j) can be divided by Bayes' rule conditioned on hypothesis H_0 to produce Bayes' rule for a sequential hypothesis test:

$$O_j(H_0 | y_1, y_2, \dots, y_n) = O_j(H_0) \prod_{i=1}^n L_j(y_i | H_0) \tag{E31}$$

Dividing this equation through by the prior odds, it becomes apparent that the statistic in the sequential hypothesis test is just the ratio of the posterior odds to the prior odds:

$$\frac{O_j(H_0 | y_1, y_2, \dots, y_n)}{O_j(H_0)} = \prod_{i=1}^n L_j(y_i | H_0) \equiv \Lambda_{j,n} \tag{E32}$$

The prior odds are the ratio of the probability that the alternative hypothesis is true to the probability that the null hypothesis is true, before any data have been collected from the system. In many cases, these probabilities are not known—no prior information about the system is known. In the absence of prior information about the system, these probabilities are taken to be $1/2$, making the prior odds equal to 1. Thus in the absence of prior information, the test statistic $\Lambda_{j,n}$ is equal to the odds that the system adheres to the alternative PDF as opposed to the null PDF.

Error Probabilities for the Sequential Hypothesis Tests:

Because the sequential hypothesis tests make decisions based on probabilities, there is always a finite probability that a decision reached by the test is erroneous. If a sequential hypothesis test makes a decision to accept the alternative hypothesis H_j as true when the null hypothesis H_0 is true, then an error of type I is said to have occurred. If a sequential hypothesis test makes a decision to accept the null hypothesis H_0 as true when the alternative hypothesis H_j is true, then an error of type II is said to have occurred. Although the designation is arbitrary, it stems from situations in which one kind of error is more serious than the other. Since the normal usage of the sequential hypothesis tests is to detect a change in signal response from its normal behavior (i.e., hypothesis H_0) to some abnormal behavior (i.e., hypothesis H_j), the error of accepting H_j when H_0 is true is the more serious error. The probability that a decision to accept hypothesis H_j is erroneous is denoted by α . A type I decision error is also called a false alarm and the probability of a type I error is called the false alarm probability. The probability that a decision to accept hypothesis H_0 is erroneous is denoted by β . A type II decision error is also called a missed alarm and the probability of a type II error is called the missed alarm probability.

The sequential hypothesis tests are open-ended. The tests will continue to collect observations from the system and update the test statistic until the test statistic satisfies one of the two decision conditions. In principle, the number of observations needed to reach a decision can be any positive integer, although it can be shown that a decision will be reached in a finite number of observations. Since the number of observations needed to make a decision is indeterminate, the probability that a decision is erroneous is found by summing the probability of an erroneous decision being made after 1 observation, 2 observations, and so on. For-

mally, in terms of the threshold limits A and B that define the test, the false alarm probability is given by:

$$\alpha = P(\Lambda_{j,1} \geq BH_0) + P(B < \Lambda_{j,2} < A, \Lambda_{j,2} \geq BH_0) + \quad (E33)$$

The first term in the sum is the probability that the test statistic drops below the lower threshold limit after only one observation given that the alternative hypothesis is true. The second term is the probability that the test statistic drops below the lower threshold limit after two observations given that the alternative hypothesis is true. Similarly, the missed alarm probability is given by:

$$\beta = P(\Lambda_{j,1} \leq AH_0) + P(B < \Lambda_{j,2} < A, \Lambda_{j,2} < AH_0) + \quad (E34)$$

These expressions are by no means easily computed. Moreover, one could not hope to solve these equations for A and B in terms of given α and β , despite the desirability of being able to do so in setting up a test to provide a specified protection. Although these equations cannot be solved, it can be shown that the error probabilities and the threshold limits are related by the following inequalities

$$A \geq \frac{\alpha}{(1-\beta)} \text{ and } \frac{1}{B} \geq \frac{\beta}{(1-\alpha)}. \quad (E35)$$

The error probabilities and the threshold limits are related by inequalities because the test statistic $\Lambda_{j,n}$ does not usually attain exactly the value A or the value B when the test is completed. But since a decision is declared as soon as an observation drives the test statistic past either threshold, the inequalities are almost equalities. Indeed, in practice, A and B are taken to be equal to $\alpha/(1-\beta)$ and $(1-\alpha)/\beta$, respectively. Doing so, of course, means that the sequential hypothesis test actually carried out has error probabilities that are somewhat different than those specified. Let α' and β' denote the empirical error probabilities actually attained by a test using specified threshold limits of $A = \alpha/(1-\beta)$ and $B = (1-\alpha)/\beta$. Then according to the inequalities in equation E35, the empirical error probabilities (i.e., α' and β') are related to the preassigned error probabilities (i.e., the values of α and β used to specify the threshold limits) by

$$\frac{\alpha'}{(1-\beta')} \leq A = \frac{\alpha}{(1-\beta)} \text{ and } \frac{\beta'}{(1-\alpha')} \leq \frac{1}{B} = \frac{\beta}{(1-\alpha)}. \quad (E36)$$

Multiplying these through to eliminate denominators, one obtains

$$\alpha - \alpha'\beta \leq \alpha - \alpha\beta' \text{ and } \beta' - \alpha'\beta' \leq \beta - \alpha'\beta. \quad (E37)$$

Adding these two equations together, one obtains an inequality relating the empirical error probabilities to the preassigned error probabilities:

$$\alpha + \beta' \leq \alpha + \beta. \quad (E38)$$

One of the key features of the hypothesis test technique is that the designer can specify the error probabilities. This is particularly important for type I errors, because false alarms can cause an operator to make an incorrect decision. Type II errors typically do not lead to incorrect decisions. This is because in the event that a real failure does occur, missed alarms may delay the time to detect the failure but not the ability to detect the failure. The result above (equation E38) shows that the preassigned false alarm probability is not a strict upper limit for the empirical false alarm probability. Similarly, the preassigned missed alarm probability is not a

strict upper limit for the empirical missed alarm probability, even when the hypothesis test is applied to purely random data. It is the sum of the preassigned error probabilities that is an upper limit for the sum of the empirical error probabilities. Thus it is possible with purely random data for one of the empirical error probabilities to exceed its corresponding preassigned error probability, but both empirical error probabilities cannot be greater than their corresponding preassigned error probabilities.

True upper bounds for the empirical error probabilities can be determined from the inequalities in equation E36,

$$\alpha' \leq \frac{\alpha'}{(1-\beta')} \leq \frac{\alpha}{(1-\beta)} \text{ and } \beta' \leq \frac{\beta'}{(1-\alpha')} \leq \frac{\beta}{(1-\alpha)}. \quad (E39)$$

For small preassigned error probabilities, the true upper bounds are only slightly greater than the preassigned error probabilities. For instance, if both of the preassigned error probabilities are 0.01 then the empirical error probabilities of the test will not exceed 0.0101.

The Sequential Probability Ratio Test (SPRT):

The sequential hypothesis tests described herein above are general statistical tests valid for any pair of related hypotheses. MSET has historically employed four specific sequential hypothesis tests to detect signal faults. These four tests are called the Sequential Probability Ratio Tests, or SPRTs. The SPRTs monitor for changes in the statistical characteristics of the residual signals. A residual signal is the difference between an actual signal and MSET's estimate of that signal. The SPRTs continually monitor a residual signal, generating sequences of decisions. A decision in which the null hypothesis is accepted (i.e., $\Lambda_{j,n} \leq A$) is called a normal decision and implies that the residual signal is behaving as anticipated. A decision in which the alternative hypothesis is accepted (i.e., $\Lambda_{j,n} \geq B$) is called a fault decision and implies that the residual signal is behaving abnormally.

The null hypothesis upon which the SPRTs are based specifies that the residual signal consists of Gaussian data that have a sample mean of 0 and a sample variance of σ^2 . A training procedure, during which the system is operating normally, is used to verify that the mean of the signal is 0 and to evaluate the variance of the signal. Note that if the residual signal does not have a mean of 0, the calculated mean from the training phase is used to normalize the residual signal for the surveillance procedure using the model. Thus the null hypothesis, H_0 , for the SPRTs is that the signal being analyzed adheres to Gaussian PDF ($N(y; \mu, \sigma^2)$),

$$N(y; \mu, \sigma^2) = \frac{1}{\sigma\sqrt{2\pi}} \exp\left[-\frac{1}{2\sigma^2}(y-\mu)^2\right], \quad (E40)$$

for which the mean (μ) is 0 and the variance is σ^2 . Thus, the conditional probability that a discrete observation (y_i) occurs given the null hypothesis is expressed as

$$P(y_i|H_0) = N(y_i; 0, \sigma^2). \quad (E41)$$

The four SPRT tests historically used with MSET are the positive mean test, the negative mean test, the nominal variance test, and the inverse variance test. For the positive mean test, the corresponding alternative hypothesis, H_1 , is that the signal data adhere to a Gaussian PDF with mean +M and variance σ^2 , where M is the preassigned system distur-

bance magnitude for the mean test. For the negative mean test, the corresponding alternative hypothesis, H_2 , is that the signal data adheres to a Gaussian PDF with mean $-M$ and variance σ^2 . Referring to FIG. 10, the hypotheses for the two mean tests are illustrated for $M=2$ and $\sigma^2=1$. For the nominal variance test, the alternative hypothesis, H_3 , is that the signal data adheres to a Gaussian PDF with mean 0 and variance $V\sigma^2$, where V is the preassigned system disturbance magnitude for the variance test. For the inverse variance test, the corresponding alternative hypothesis, H_4 , is that the signal data adheres to a Gaussian PDF with mean 0 and variance σ^2/V . Referring to FIG. 11, the hypotheses for the two variance tests are illustrated for $V=2$ and $\sigma^2=1$. The conditional probabilities that a discrete observation (y_i) occurs given one of the four alternative hypotheses are expressed as

$$P(y_i | H_1) = N(y_i; M, \sigma^2), \tag{E42}$$

$$P(y_i | H_2) = N(y_i; -M, \sigma^2), \tag{20}$$

$$P(y_i | H_3) = N(y_i; 0, V\sigma^2),$$

$$P(y_i | H_4) = N\left(y_i; 0, \frac{\sigma^2}{V}\right).$$

The logarithm of the test statistic for the four SPRT tests can be evaluated by substituting the conditional probabilities from equations E41 and E42 into the general formula (equation E27) and simplifying. Thus, for the positive mean test,

$$\ln\Lambda_{1,n} = \tag{E43}$$

$$\sum_{i=1}^n \ln \left[\frac{N(y_i; M, \sigma^2)}{N(y_i; 0, \sigma^2)} \right] = \sum_{i=1}^n \ln \left[\frac{\exp\left(-\frac{1}{2\sigma^2}(y_i - M)^2\right)}{\exp\left(-\frac{1}{2\sigma^2}y_i^2\right)} \right] = \sum_{i=1}^n \frac{y_i^2 - (y_i - M)^2}{2\sigma^2} = \frac{M}{2\sigma^2} \sum_{i=1}^n \left(y_i - \frac{M}{2} \right) \equiv SPRT_{pos}.$$

The equation E43 defines the SPRT index for the positive mean test ($SPRT_{pos}$). A SPRT index is defined for each of the four sequential hypothesis tests. The SPRT indices are the actual quantities computed by the SPRT fault detection procedure. The SPRT index for the negative mean test ($SPRT_{neg}$) is given by

$$\ln\Lambda_{2,n} = \sum_{i=1}^n \ln \left[\frac{N(y_i; M, \sigma^2)}{N(y_i; 0, \sigma^2)} \right] = \frac{M}{2\sigma^2} \sum_{i=1}^n \left(-y_i - \frac{M}{2} \right) \equiv SPRT_{neg} \tag{E44}$$

The SPRT index for the nominal variance test ($SPRT_{nom}$) is given by

$$\ln\Lambda_{3,n} = \tag{E45}$$

$$\sum_{i=1}^n \ln \left[\frac{N(y_i; 0, V\sigma^2)}{N(y_i; 0, \sigma^2)} \right] = \sum_{i=1}^n \ln \left[\frac{\frac{1}{\sqrt{2\pi V\sigma^2}} \exp\left(-\frac{y_i^2}{2V\sigma^2}\right)}{\frac{1}{\sqrt{2\pi\sigma^2}} \exp\left(-\frac{y_i^2}{2\sigma^2}\right)} \right] =$$

-continued

$$\sum_{i=1}^n \left(\ln \frac{1}{\sqrt{V}} + \frac{y_i^2}{2\sigma^2} \left(1 - \frac{1}{V} \right) \right) = \frac{V-1}{2V\sigma^2} \sum_{i=1}^n y_i^2 - \frac{1}{2} \ln V \equiv SPRT_{nom}.$$

The SPRT index for the inverse variance test ($SPRT_{inv}$) is given by

$$\ln\Lambda_{4,n} = \sum_{i=1}^n \ln \left[\frac{N\left(y_i; 0, \frac{\sigma^2}{V}\right)}{N(y_i; 0, \sigma^2)} \right] = \tag{E46}$$

$$\frac{(1-V)}{2\sigma^2} \sum_{i=1}^n y_i^2 + \frac{1}{2} \ln V \equiv SPRT_{inv}.$$

Novel Improvements to the Fault Detector Training and Surveillance Procedures:

Having described the SPRT fault detector training and surveillance methods herein above, the section below describes the novel improvements made by one embodiment of the invention when used for fault detector training and surveillance, said improvements being applicable to any asset preferably having at least one characteristic data signal.

The Adaptive Sequential Probability (ASP) Test:

The SPRT technique is valid only for residual signals that are random and adhere to Gaussian distributions. Because the MSET parameter estimation algorithm simulates the deterministic components of a set of inter-related raw signals, the residual signals that are produced within MSET are often white-noise processes (i.e., not serially-correlated). Although the MSET residual signals are typically white, they are often non-Gaussian (not normally distributed). If the SPRT fault detection model is applied to signals that are either non-Gaussian, non-white, or both, the theoretical false and missed alarm probabilities may not be achieved. The novel advanced fault detection method of one embodiment of the invention, herein named the Adaptive Sequential Probability (ASP) technique or method, solves the problem associated with non-Gaussian, non-white residual signals. The ASP method uses binary hypothesis tests that are numerically tuned to better accommodate the non-Gaussian data distributions that are typical for residual error signals produced by parameter estimation based techniques, such as MSET.

Mathematical Foundations of the ASP Test:

The Adaptive Sequential Probability (ASP) method defines four new sequential hypothesis tests. The Adaptive Sequential Probability method is an advanced failure detection technique that broadens the domain of applicability of the SPRT technique to non-Gaussian PDFs. In the ASP method, the assumption that the data fit a Gaussian PDF is relaxed and the test statistic is evaluated for any arbitrary data distribution. In the ASP method, the signal is assumed to consist of random observations that adhere to a specific PDF that is a function of the sample mean, variance, and possibly higher order terms. The PDF is denoted by the general function $\mathfrak{S}(y; \mu, \sigma^2, \dots)$. The parameter list of the function is open-ended to indicate that additional terms,

such as the sample skewness, kurtosis, or width of the distribution at half-maximum, may be required to characterize the function.

The null hypothesis upon which the ASP tests are based specifies that the data distribution has a sample mean of 0 and a sample variance of σ^2 . A training phase, during which the system is operating normally, is used to verify that the mean of the signal is 0 and to evaluate the sample variance. If the PDF is dependent upon any other additional terms, they are also evaluated during the training phase for numerically tuning one or more probability functions obtained by fitting an open-ended general probability functions to one or more data distributions obtained during typical or normal operating conditions of the asset under surveillance. Thus, the conditional probability that a discrete observation (y_i) occurs given the null hypothesis is expressed as

$$P(y_i|H_0)=\mathfrak{S}(y_i; 0, \sigma^2, \dots). \tag{E47}$$

Typically, four sequential hypothesis tests (i.e., a positive mean test, a negative mean test, a nominal variance test, and an inverse variance test) are utilized by the ASP method. For the positive mean test, the corresponding alternative hypothesis, H_1 , is that the signal data adhere to the specified PDF with mean +M and variance σ^2 where M is a preassigned system disturbance magnitude for the mean test. For the negative mean test, the corresponding alternative hypothesis, H_2 , is that the signal data adheres to the specified PDF with mean -M and variance σ^2 . For the nominal variance test, the corresponding alternative hypothesis, H_3 , is that the signal data adhere to the specified PDF with mean 0 and variance $V\sigma^2$ where V is a preassigned system disturbance magnitude for the variance test. For the inverse variance test, the corresponding alternative hypothesis, H_4 , is that the signal data adhere to the specified PDF with mean 0 and variance σ^2/V . The conditional probabilities that a discrete observation (y_i) occurs given one of the four alternative hypotheses are expressed as

$$\begin{aligned} P(y_i | H_1) &= \mathfrak{S}(y_i; M, \sigma^2, \dots), \\ P(y_i | H_2) &= \mathfrak{S}(y_i; -M, \sigma^2, \dots), \\ P(y_i | H_3) &= \mathfrak{S}(y_i; 0, V\sigma^2, \dots), \\ P(y_i | H_4) &= \mathfrak{S}\left(y_i; 0, \frac{\sigma^2}{V}, \dots\right). \end{aligned} \tag{E48}$$

The logarithm of the test statistic for the four ASP tests can be evaluated by substituting the conditional probabilities from equations E47 and E48 into the general formula (equation E27). The logarithm of the test statistic for a given test is defined to be the ASP index for that test. The ASP index for the positive mean test (ASP_{pos}) is given by

$$\ln\Lambda_{1,n} = \sum_{i=1}^n \ln \left[\frac{\mathfrak{S}(y_i; M, \sigma^2, \dots)}{\mathfrak{S}(y_i; 0, \sigma^2, \dots)} \right] \equiv ASP_{pos}. \tag{E49}$$

The ASP index for the negative mean test (ASP_{neg}) is given by

$$\ln\Lambda_{2,n} = \sum_{i=1}^n \ln \left[\frac{\mathfrak{S}(y_i; -M, \sigma^2, \dots)}{\mathfrak{S}(y_i; 0, \sigma^2, \dots)} \right] \equiv ASP_{neg}. \tag{E50}$$

The ASP index for the nominal variance test (ASP_{nom}) is given by

$$\ln\Lambda_{3,n} = \sum_{i=1}^n \ln \left[\frac{\mathfrak{S}(y_i; 0, \sigma^2, \dots)}{\mathfrak{S}(y_i; 0, V\sigma^2, \dots)} \right] \equiv ASP_{nom}. \tag{E51}$$

The ASP index for the inverse variance test (ASP_{inv}) is given by

$$\ln\Lambda_{4,n} = \sum_{i=1}^n \ln \left[\frac{\mathfrak{S}\left(y_i; 0, \frac{\sigma^2}{V}, \dots\right)}{\mathfrak{S}(y_i; 0, \sigma^2, \dots)} \right] \equiv ASP_{inv}. \tag{E52}$$

The ASP tests are then implemented in the same manner as the SPRT tests. Namely, for each time step in the calculation, the four ASP indices are calculated (equations E49 through E52). Each ASP index is compared to the upper and lower log-thresholds and the status of the test is evaluated (i.e., faulted, normal, or continuing).

ASP Method for Near-Gaussian Distributions:

The Adaptive Sequential Probability method consists of four specific sequential hypothesis tests applied to non-Gaussian data distributions. In order to use the method, a general PDF, $\mathfrak{S}(y; \rho, \sigma^2, \dots)$, must be defined for the target signal. In this section, the ASP method is derived for data distributions that are nearly Gaussian.

In applications of MSET to the Space Shuttle Main Engine accelerometer signals, applicants discovered that the residual signals produced by the system model have a nearly, but not truly, Gaussian behavior, as described in Dynamics Sensor Data Validation Phase I Final Report, by Randall L. Bickford and James P. Herzog, NASA Contract NAS8-40874, Jul. 1, 1997. When plotted as a histogram, the residual data will appear to have the same bell-curve shape as a Gaussian distribution. But when a Gaussian PDF of the same mean, standard deviation, and area as the data distribution is superimposed on it, the histogram was found by applicants to be non-Gaussian. Typically, applicants found that the histogram has thicker tails than the Gaussian curve, which corresponds to a sample kurtosis that is greater than 3.

A PDF can be written as a sum of a standard normal distribution, $Z(x)$, and a remainder term, $R(x)$, as described in Mathematical Methods of Statistics, by H. Cramer, Princeton University Press, Princeton, N.J., 1946.

$$\mathfrak{S}(x)=Z(x)+R(x), \tag{E53}$$

where the standard normal PDF

$$Z(x) = \frac{1}{\sqrt{2\pi}} \exp\left(-\frac{x^2}{2}\right) \tag{E54}$$

33

is a function of the dimensionless variable $x=(y-\mu)/\sigma$. The standard normal PDF is related to the general Gaussian PDF (equation E40) through the normalization condition:

$$\int_{-\infty}^{\infty} Z(x) dx = \int_{-\infty}^{\infty} N(y; \mu, \sigma^2) dy = 1. \tag{E55}$$

The remainder term can be expressed as an infinite series of orthogonal polynomials whose terms are functions of derivatives of the standard normal PDF. The constant coefficients of the polynomial terms are dependent on the central moments of the target distribution. As described in Handbook of Mathematical Functions, by M. Abramowitz and I. A. Stegun, Dover Publications, Inc., New York, 1972, the first four terms in the series expansion of the remainder function are:

$$\begin{aligned} R(x) = & - \left[\frac{1}{3!} \frac{\mu_3}{\sigma^3} Z^{(3)}(x) \right] + \left[\frac{1}{4!} \left(\frac{\mu_4}{\sigma^4} - 3 \right) Z^{(4)}(x) + \frac{10}{6!} \left(\frac{\mu_3}{\sigma^3} \right)^2 Z^{(6)}(x) \right] - \\ & \left[\frac{1}{5!} \left(\frac{\mu_5}{\sigma^5} - 10 \frac{\mu_3}{\sigma^3} \right) Z^{(5)}(x) + \frac{35}{7!} \frac{\mu_3}{\sigma^3} \left(\frac{\mu_4}{\sigma^4} - 3 \right) Z^{(7)}(x) + \frac{280}{9!} \left(\frac{\mu_3}{\sigma^3} \right)^3 Z^{(9)}(x) \right] + \\ & \left[\frac{1}{6!} \left(\frac{\mu_6}{\sigma^6} - 15 \frac{\mu_4}{\sigma^4} - 10 \left(\frac{\mu_3}{\sigma^3} \right)^2 + 30 \right) Z^{(6)}(x) + \left(\frac{35}{8!} \right) Z^{(8)}(x) + \right. \\ & \left. \frac{2100}{10!} \left(\frac{\mu_3}{\sigma^3} \right)^2 \left(\frac{\mu_4}{\sigma^4} - 3 \right) Z^{(10)}(x) + \frac{15400}{12!} \left(\frac{\mu_3}{\sigma^3} \right)^4 Z^{(12)}(x) \right] + \dots \end{aligned} \tag{E56}$$

The μ_i factors are central moments of the discrete data sequence $\{Y_n\}=(y_1, y_2, \dots, y_n)$,

$$\begin{aligned} \mu_i = & \\ & \frac{1}{n} \sum_{j=1}^n (y_j - \mu)^i \text{ with } \mu = \frac{1}{n} \sum_{j=1}^n y_j \text{ and } \mu_2 \equiv \sigma^2 = \frac{1}{n} \sum_{j=1}^n (y_j - \mu)^2. \end{aligned} \tag{E57}$$

The $Z^{(n)}(x)$ functions are derivatives of the standard normal PDF. The nth derivative of the standard normal PDF is given by:

$$Z^{(n)}(x) \equiv \frac{d^n}{dx^n} Z(x) = (-1)^n He_n(x) Z(x), \tag{E58}$$

where $He_n(x)$ are the Hermite polynomials. The first twelve Hermite polynomials are

$$\begin{aligned} He_1(x) &= x, \\ He_2(x) &= x^2 - 1, \\ He_3(x) &= x^3 - 3x, \\ He_4(x) &= x^4 - 6x^2 + 3, \\ He_5(x) &= x^5 - 10x^3 + 15x, \\ He_6(x) &= x^6 - 15x^4 + 45x^2 - 15, \\ He_7(x) &= x^7 - 21x^5 + 105x^3 - 105x, \\ He_8(x) &= x^8 - 28x^6 + 210x^4 - 420x^2 + 105, \\ He_9(x) &= x^9 - 36x^7 + 378x^5 - 1260x^3 + 945x, \end{aligned}$$

34

$$\begin{aligned} He_{10}(x) &= x^{10} - 45x^8 + 630x^6 - 3150x^4 + 4725x^2 - 945, \\ He_{11}(x) &= x^{11} - 55x^9 + 990x^7 - 6930x^5 + 17325x^3 - 10395x, \\ He_{12}(x) &= x^{12} - 66x^{10} + 1485x^8 - 13860x^6 + 51975x^4 - \\ & 62370x^2 + 10395. \end{aligned} \tag{E59}$$

Each term in the series expansion of the remainder function $R(x)$ is more complex than the previous term as higher central moments of the data distribution and higher derivatives of the standard normal PDF are introduced. The nth term in the remainder function depends on the central moments from order 1 (i.e., mean) through order $n+2$. Thus, the first term depends on moments through the third central moment (i.e., skewness), the second term depends on moments through the fourth central moment (i.e., kurtosis), and so on.

If the data distribution that is to be approximated with equation E53 is nearly Gaussian, a good approximation will

be achieved with only a few of the terms in the series. In the ASP method for near-Gaussian distributions, the data distribution is first approximated with the standard normal PDF, $Z(x)$. The approximation is refined by adding successively higher terms of the remainder function until an adequate fit between the general PDF, $\mathfrak{S}(x)$, and the data distribution is produced. In practice it is usually not advisable to go beyond the fourth term in the remainder function because the tail regions of the general PDF become unstable.

Using the equations for the derivatives of the standard normal PDF (equations E58 and E59), the remainder function can be written as a product of the standard normal PDF and a polynomial whose coefficients depend on the central moments of the data distribution.

$$R(x) = Z(x) \sum_{i=1}^n r_i(x), \tag{E60}$$

where the first four terms in the series are

$$r_1(x) = \frac{1}{6} \frac{\mu_3}{\sigma^3} He_3(x), \tag{E61}$$

$$r_2(x) = \frac{1}{24} \left(\frac{\mu_4}{\sigma^4} - 3 \right) He_4(x) + \frac{1}{72} \left(\frac{\mu_3}{\sigma^3} \right)^2 He_6(x), \tag{E62}$$

$$r_3(x) = \frac{1}{120} \left(\frac{\mu_5}{\sigma^5} - 10 \frac{\mu_3}{\sigma^3} \right) He_5(x) + \tag{E63}$$

$$\frac{1}{144} \frac{\mu_3}{\sigma^3} \left(\frac{\mu_4}{\sigma^4} - 3 \right) He_7(x) + \frac{1}{1296} \left(\frac{\mu_3}{\sigma^3} \right)^3 He_9(x),$$

-continued

$$r_4(x) = \frac{1}{720} \left(\frac{\mu_6}{\sigma^6} - 15 \frac{\mu_4}{\sigma^4} - 10 \left(\frac{\mu_3}{\sigma^3} \right)^2 + 30 \right) H_{e6}(x) + \tag{E64}$$

$$\frac{1}{1152} \left(\frac{\mu_4}{\sigma^4} - 3 \right)^3 H_{e8}(x) + \frac{1}{720} \frac{\mu_3}{\sigma^3} \left(\frac{\mu_5}{\sigma^5} - 10 \frac{\mu_3}{\sigma^3} \right) H_{e8}(x) +$$

$$\frac{1}{1728} \left(\frac{\mu_3}{\sigma^3} \right)^2 \left(\frac{\mu_4}{\sigma^4} - 3 \right) H_{e10}(x) + \frac{1}{31104} \left(\frac{\mu_3}{\sigma^3} \right)^4 H_{e12}(x).$$

Thus, the series expansion formula for the approximation of the general PDF is

$$\mathfrak{F}(x) \approx Z(x) + Z(x) \sum_{i=1}^n r_i(x). \tag{E65}$$

Application of the ASP Method to Space Shuttle Main Engine Residual Signals:

In one application of use and operation, and in one embodiment of the invention, the ASP technique was reduced to practice to provide highly reliable data validation for high frequency Space Shuttle Main Engine (SSME) accelerometers. Each SSME is monitored by eight high frequency (10.24 kHz) accelerometers with three sensors mounted on each of the two high pressure turbopumps and two sensors mounted on the engine gimbal bearing. Several MSET models were prepared to validate the ASP method for the six turbopump accelerometers. The MSET pattern recognition algorithm produces extremely accurate simulations of turbopump accelerometer behavior. Referring to FIG. 12, some results from applying the six sensor MSET model to a typical Space Shuttle flight (i.e., flight STS057, engine 1) are shown. For the calculation shown in FIG. 12, the MSET training algorithm extracted a small fraction of the data in the accelerometer signals to simulate the behavior of the accelerometers (the process memory matrix contained only 0.0083% of the raw signal data). In the top plot, the highly dynamic signal from the first SSME turbopump accelerometer in the model (i.e., the oxidizer preburner pump 45 accelerometer) is shown as a function of time from the launch of the Space Shuttle. In the middle plot, MSET's estimate of the accelerometer signal shows the very high accuracy of the MSET simulation. The residual signal for the calculation, which is the difference between the sensor signal and MSET's estimate of that signal, is shown in the bottom plot. The relative error in the calculation, as measured by the ratio of the standard deviation of the residual signal to the standard deviation of the sensor signal, is only 0.86%. The results shown in FIG. 12 illustrate MSET's ability to accurately model highly dynamic signals, even when only a tiny fraction of available data is used to represent the signal behavior.

Still referring to FIG. 12, the residual signal for the analysis of a typical SSME accelerometer appears to be random. Referring to FIG. 13, the distribution of data in the residual signal is shown. The probability density for the residual signal was approximated by dividing the data range into m equally-sized bins and then counting the number of residual signal data values that fall into each bin. The count number is a discrete function of the sequence $\{Y_m\} = y_1, y_2, \dots, y_m$, where the ith element in the sequence (y_i) is given by

$$y_i = y_{min} + i \frac{(y_{max} - y_{min})}{m}, \tag{E66}$$

and y_{min} is the minimum datum and y_{max} is the maximum datum in the residual signal. A normalized residual signal PDF is produced by dividing each element in the count number function by the total number of elements in the residual signal. The number of bins used to produce the residual signal PDFs was 1000. As shown in FIG. 13, a PDF for a typical residual signal has a nearly Gaussian shape. Superimposed on top of residual signal PDF is a Gaussian PDF of the same mean, standard deviation, and area as the residual signal PDF. The first four moments of the residual signal data are as follows: mean= $1.1 \cdot 10^{-4}$ g, standard deviation= $8.2 \cdot 10^{-2}$ g, skewness=0.32, and kurtosis=5.7, where the skewness and kurtosis are related to the third and fourth central moments of the data by

$$\text{skewness} = \frac{\mu_3}{\sigma^3} \text{ and kurtosis} = \frac{\mu_4}{\sigma^4}. \tag{E67}$$

Because the kurtosis of the distribution is greater than 3, the residual signal PDF has thicker tail regions than a true Gaussian distribution. This is confirmed by a visual examination of FIG. 13.

The ASP method for near-Gaussian distributions was applied to the residual signals from the MSET model of the SSME accelerometers. The residual signal PDFs were approximated with the series expansion formula of a general PDF (equations E60 through E65). Four calculations were performed for each residual signal in the model. In the first calculation, the residual signals were approximated with the one-term series expansion formula. In the one-term formula, the remainder function (R(x)) is given by the product of the standard normal PDF and the first term in the series, $r_1(x)$. Subsequent calculations introduced additional terms from the series, culminating with the four-term formula in which the remainder function is given by the product of the standard normal PDF and the four term series, $r_1(x)+r_2(x)+r_3(x)+r_4(x)$.

For each calculation, the quality of the approximation is measured by the root mean-squared (rms) error of the calculation. The rms error (E_{rms}) is a function of the difference between the calculated PDF ($\mathfrak{F}(x)$) from equation E65 and the residual signal PDF ($F(x)$),

$$E_{rms} = \left[\frac{1}{m} \sum_{i=1}^m (\mathfrak{F}(x_i) - F(x_i))^2 \right]^{1/2}. \tag{E68}$$

The calculated and residual signal PDFs are discrete functions of the dimensionless variable $x_i = (y_i - \mu) / \sigma$, where y_i is an element in the sequence that spans the range of data in the residual signal distribution (see equation E66).

In general terms, each additional term in the series expansion improves the approximation of the residual signal PDFs. Referring to FIG. 14, FIG. 15 and FIG. 16, adding terms from the series expansion formula improves the fit of the residual signal PDF from the first sensor. The approximation of the residual signal PDF generated by the one-term series expansion formula is compared to a Gaussian approximation and the residual signal PDF in FIG. 14. The one-term

approximation shows little improvement over the Gaussian approximation. The rms error for the Gaussian PDF is 0.414, while the rms error for the one-term series expansion PDF is slightly smaller at 0.409. The PDF generated by the two-term series expansion formula is shown in FIG. 15. The fit of the two-term approximation is significantly better than that of the Gaussian approximation. The two-term formula provides an excellent fit of the residual signal PDF, especially near the peak in the distribution. The greatest source of error in the approximation occurs in the transition regions of the distribution, between 1 and 4 standard deviations from the mean. The rms error for the two-term series expansion PDF is 0.122, which is nearly a factor of four smaller than the rms error of the Gaussian PDF. The PDF generated by the three-term series expansion formula is shown in FIG. 16. The three-term formula provides a better fit of the peak in the distribution than does the two-term formula. The rms error for the three-term approximation is 0.151, which is slightly larger than that of the two-term approximation because its fit of the lower transition region is less accurate than that of the two-term approximation.

The rms errors of the four calculations for each of the sensors in the model are listed in FIG. 17. Also included in FIG. 17 are the rms errors for Gaussian PDFs of the same mean, standard deviation, and area as the residual signal PDFs. As indicated by the data in the first two columns of FIG. 17, the one-term series expansion formula produces PDFs that are slightly more accurate than the corresponding Gaussian PDFs. Significant improvement is exhibited by the two-term series expansion formula, which produces PDFs whose rms errors are as much as a factor of four smaller than those from the corresponding Gaussian and one-term series expansion approximations. The three-term series expansion formula generally produces larger rms errors than does the two-term formula because the fit of the transition regions of the distribution is less accurate. This trend is further exhibited by the four-term series expansion formula. For three of the calculations (i.e., sensor numbers 1, 2, and 6), the four-term approximations are unstable in the transition regions, resulting in rms errors that are much larger than those of the corresponding Gaussian approximations. The four-term series expansion formula produces an improved approximation for the residual signal from sensor number 5 only. The residual signal for this accelerometer is the most nearly Gaussian of the sensors to begin with, as indicated by the rms errors for the Gaussian approximations for all six sensors. These results suggest that the higher order terms in the series expansion should be used with caution: only those PDFs that are nearly Gaussian to begin with should be approximated with terms higher than the second term in the series expansion.

In the ASP method for near-Gaussian distributions, the central moments of the distribution to be approximated are used to evaluate the coefficients in the series expansion. A second approach, known as the optimized ASP method for near-Gaussian distributions, was also evaluated. In the second approach, the higher-order central moments (i.e., μ_3 , μ_4 , μ_5 , and μ_6) are treated as free parameters in the model and the approximation is optimized by searching for values of the central moments that provide the best fit of the distribution. In this approach, the simplex optimization method is used to minimize the rms error of the calculation, as described in A Simplex Method for Function Minimization, by J. A. Nelder and R. Mead, Computer Journal, Vol. 7, 1965, at pages 308 through 313. The simplex method is particularly useful for minimizing complicated transcendental functions of two or more variables because it minimizes

a function by utilizing evaluations of the function only—no evaluations of function derivatives are required.

In the optimized ASP method for near-Gaussian distributions, the first step is to select the approximation formula to be optimized, either the one, two, three, or four-term series expansion formula. The number of free parameters in the model is determined by the approximation formula used. For instance, the one-term formula requires only one free parameter (i.e., μ_3), whereas the four-term formula requires four free parameters (i.e., μ_3 , μ_4 , μ_5 , and μ_6). The function that is minimized by the simplex algorithm is the rms error for the approximation, given by equation E68. The higher-order central moments of the distribution are used as initial values of the free parameters in the model. The simplex algorithm iterates on the free parameters until a minimum in the function is found, thereby producing the best fit (i.e., smallest rms error) between the calculated PDF and the residual signal PDF, for a given approximation formula.

The rms errors of the calculations using the optimized ASP method for near-Gaussian distributions are listed in FIG. 18. Also included in FIG. 18 are the rms errors for Gaussian PDFs of the same mean, standard deviation, and area as the residual signal PDFs. Comparing the rms errors of the Gaussian approximations to those from the optimized calculations shows that all optimized series expansion formulas produce significant reductions in the rms error. Comparing the data in FIG. 18 to those of FIG. 17 shows that the optimized ASP method produces more accurate approximations than does the ASP method for each series expansion formula. For a given sensor, the optimized two-term series expansion formula produces rms errors that are roughly a factor of two smaller than those of the optimized one-term formula. The optimized three-term and four-term series expansion formulas though, produce rms errors that are roughly equivalent to those of the optimized two-term formula. Since the three-term and four-term models incorporate more complicated functions with more free parameters than the two-term model, these results indicate that the optimized two-term series expansion method provides the best balance between accuracy and efficiency.

The PDF generated by the optimized two-term series expansion formula for the first sensor is shown in FIG. 19. The optimized two-term formula provides an excellent fit of the residual signal PDF across all regions of the distribution, including the transition regions. Comparing the results of the optimized ASP calculation in FIG. 19 to those from corresponding ASP calculations in FIG. 15 and FIG. 16, reveals that the main effect of the optimization is to improve the accuracy of the approximation through the transition regions of the distribution.

The optimized ASP method for near-Gaussian distributions produces an excellent fit of the residual signal distributions from the MSET model of SSME accelerometer signals. Because the optimized ASP method is tuned to the specific data distributions analyzed, the empirical error probabilities for the method will better adhere to the theoretical limits for the fault detection procedure.

A parametric study of the empirical false alarm rate was performed to compare the false alarm of the SPRT method to the new ASP method for the SSME residual signals. In the study, the residual signals generated by applying the six sensor MSET model to the accelerometer signals from flight STS057 engine 1 were analyzed with the SPRT and ASP sequential hypothesis tests at various values of the false alarm probability and the system disturbance magnitude parameters. Because of the high frequency of the accelerometer signals (10.24 kHz) and long duration of the flight

(542.4 sec), the residual signals contain over five million data values. The residual signal data set was so large that every tenth point was extracted from the signals and the fault detection models were applied to the subset. The subset of the residual signals was large enough to produce accurate statistics but small enough to permit multiple calculations in a reasonable time span. Typically, the sequential hypothesis tests make a decision for every 1 to 10 data points analyzed. Thus for the parametric calculations of the SSME residual signals, hundreds of thousands of decisions were made for each signal. By dividing the number of fault decisions from a SPRT analysis of a residual signal into the total number of fault and normal decisions made by the test, the empirical false alarm rate could be accurately evaluated.

Referring to FIG. 20, the results from the application of the positive mean SPRT and ASP tests to the residual signal from the first sensor are shown. The calculations shown in FIG. 20 were performed with a constant preassigned missed alarm probability (β) of 0.01, a constant system disturbance magnitude (M) of 6, and a variable preassigned false alarm probability (α). The solid diagonal line in FIG. 20 represents the theoretical upper bound for the empirical false alarm probability, as defined by equation E39. For the SPRT calculation, the empirical false alarm rate satisfies the theoretical upper bound only for preassigned false alarm probabilities greater than 0.003. For smaller values of the pre-assigned false alarm probability, the SPRT model reaches more fault decisions than one would expect based on theoretical arguments. The theoretical upper bound for the empirical false alarm probability is not met for all values of the preassigned false alarm probability because the residual signals are not purely Gaussian, as confirmed in FIG. 13. The residual signal distribution has more data populating the tail regions than does a Gaussian distribution of the same mean, standard deviation, and area as the residual signal distribution. The data from the tail regions of a distribution are a major source of false alarms in the SPRT calculations, because they are more representative of the alternative hypothesis than they are of the normal hypothesis. Because the residual signals exhibit more heavily populated tail regions than true Gaussian distributions, they have a tendency to trigger more false alarms than anticipated, especially at high levels of sensitivity (i.e., small values of the false alarm probability). Because the optimized ASP method is tuned to the specific data distributions exhibited by the residual signals, the empirical false alarm rate for the ASP calculation satisfies the theoretical upper bound for all values of the preassigned false alarm probability. The ASP method produces fewer false alarms than the SPRT method for all values of the preassigned false alarm probability.

ASP Benefits and Applications:

The Adaptive Sequential Probability (ASP) technique was developed as the fault detection element of a software program that reliably detects signal data faults for an asset, such as a process and/or apparatus. These signal validation modules improve safety, reduce maintenance cost, and enable optimal performance for a wide range of aeronautical, industrial, chemical, power generating, medical, biological, financial, and military assets. Signal validation is required in all types of process critical control and safety systems where unexpected process interruptions due to sensor or control component failures or false alarms are unsafe or uneconomical. Signal validation assures the safe, reliable operation of a process or apparatus and reduces the manpower, schedule and uncertainty associated with sensor and component failure detection. Signal validation prevents a facility safety or control system from making critical

decisions, such as the decision to shut down a process or abort a mission, on the basis of bad sensor data. Signal validation improves process quality and efficiency by ensuring that closed loop control or data analysis is performed using good data. Finally, signal validation increases system up time and decreases system maintenance cost by enabling sensor calibration using on-condition criteria rather than time-in-service criteria.

Bayesian Belief Network (BBN) Example

In one example of the fault cause procedure use and operation, a test setup was configured for exposing two redundant hydrogen sensor assemblies to varying concentrations of H_2 gas. Each of these sensor assemblies contains two H_2 sensor elements, one temperature sensor element, and one heater control element. A test system computer used the data acquisition means to monitor the signal sources consisting of the three sensor elements on each of the two sensors and actuated an alarm if hydrogen levels exceeded safety limits. As each observation was analyzed, the fault detection returned an array of ones and zeros indicating whether each signal's reading was normal or abnormal. The Bayesian belief network (BBN) used the fault detection model's output as positive findings to determine the state for each of its alarm indication leaf nodes. The BBN used this state information to determine the probability of any of the specified possible causes of the fault, thereby classifying the fault.

The BBN applies the output from each fault detector associated with one of its alarm indication leaf nodes as a positive finding for the leaf node. The BBN combines this information from all of its leaf nodes to determine the probability of any of the specified possible causes of the fault. The BBN fault cause model or submodel configuration and probability tables can be different in each operating mode. However, in this example a similar BBN fault classification model configuration was used in each of the two system operating modes. The configuration was as follows. Six fault nodes were created to determine the specific sensor element that had failed. Each sensor element node had two possible states, good (not faulty) and bad (faulty). Two additional fault nodes were created to determine whether the entire sensor had failed. These were named Sensor1 and Sensor2. They also took on the states good and bad. If a node is in a good state, the implication is that the associated asset item is operating acceptably. For each of the fault nodes, we assign a prior probability. This is the probability that the proposition is true. For example, we believe that Sensor1 and Sensor2 are reliable under the test conditions, so we believe they will behave correctly 95% of the time. This implies that they will behave incorrectly 5% of the time. This may be due to any number of reasons, e.g., not supplying power to the sensor, damage to the sensor's cables, etc. The reasons for this failure are not of interest, only that each sensor can be expected to operate correctly 95% of the time. We believe the probability of a bad element to be greater than the probability of a bad sensor, so we assigned a 10% prior probability to each of the elements failing. Conversely, there is 90% prior probability that each element has not failed.

Each of the alarm indication nodes is a leaf node. Each leaf node is a child of at least one parent, and a conditional probability is required for each of the combinations of parent states. That is, given the state of each of the parents, there is a probability that the alarm leaf node will be in either the "normal" or "abnormal" state. Each fault node indicating a bad element has an associated alarm leaf node as a child. Each "bad sensor" node has three of the leaf nodes as

children. Therefore, each leaf node has two parents. The conditional probability tables require one entry for each state of the node for each combination of the node's parent's states. This yields a conditional probability table for each node that requires eight separate entries.

Conditional probabilities for the leaf nodes were divided into three conditions. If all of the parent states were "good", the probability that each of the child nodes were in a normal state was very high (95%). If either the associated sensor or the element were "bad", the probability that the sensor was behaving abnormally was also high (95%). If both the sensor and the element were "bad" the probability that the sensor was behaving abnormally was higher than if only one or the other were "bad", so a 99% probability of failure was assigned.

The system was exposed to H₂ at 0%, 0.1%, 0.5%, 1.0%, 5.0%, 10.0% and 100.0% concentrations during normal operation. Training data was collected during these exposures from each of these elements at one-second intervals. Test data was taken several months later at 3.57% H₂ and 0% H₂ using the same sensors and test configuration. Next, these data were adjusted to create additional sets of training and test data wherein the effect of hydrogen tank venting in the vicinity of the sensors was simulated. Tank venting has the effect of increasing the background hydrogen concentration in the vicinity of the sensors and can cause the hydrogen detection system to produce undesirable false alarms or missed alarms.

An operating mode determination procedure **31** was used to classify each observation on the basis of the tank vent valve state. The procedure classified the operating mode as OPERATING whenever the tank valve indication was less than 50% open and the operating mode as VENTING whenever the tank valve indication was more than 50% open.

Two parameter estimation submodels **52** were trained on the training data, one for OPERATING and one for VENTING. Two fault detection submodels **54** were calibrated for each included sensor on the basis of their corresponding submodel estimates taken over the training data for their respective operating modes. Each fault detector returned an array of ones and zeros indicating whether each sensor element's reading was normal or abnormal. Test results demonstrated that the BBN is effective for diagnosing faults detected by the parameter estimation and fault detection procedures. Nominal (OPERATING) test data consisted of data obtained during exposure to 3.57% H₂, and during exposure to 0% H₂ using the sensors that had been previously used to acquire the training data. As expected, the system accurately predicted the data and generated no alarms.

While a BBN fault cause or classification procedure **84** is described by example, a variety of types of fault cause classification procedure can be used with the instant invention.

Accordingly, in one aspect, the present invention provides a new, novel and useful surveillance system: apparatus and method.

In another aspect, an embodiment of invention provides a surveillance system: apparatus and method comprised of an unconstrained form of a residual error probability density function model used in said surveillance system's fault detection method.

In another aspect, an embodiment of invention provides a surveillance system: apparatus and method which can perform high sensitivity surveillance for a wide variety of assets including industrial, utility, business, medical, transporta-

tion, financial, and biological processes and apparatuses wherein such process and/or apparatus asset preferably has at least one pair of redundant actual and/or virtual signals.

In another aspect, an embodiment of invention provides a surveillance system: apparatus and method comprised of a statistical hypothesis test surveillance decision procedure that uses a fault detection model comprised of a probability density function model of a residual error signal that is of an unconstrained form.

In another aspect, an embodiment of invention provides a surveillance system: apparatus and method comprised of an improved fault detection model for a process surveillance scheme using recorded operating data for an asset to train a fault detection model.

In another aspect, an embodiment of invention provides a surveillance system: apparatus and method comprised of an improved system and method for surveillance of on-line, real-time signals, or off-line accumulated signal data.

In another aspect, an embodiment of invention provides a surveillance system: apparatus and method comprised of an improved system and method for surveillance of signal sources and detecting a fault or error state of the signal sources enabling responsive action thereto.

In another aspect, an embodiment of invention provides a surveillance system: apparatus and method comprised of an improved system and method for surveillance of signal sources and detecting a fault or error state of the asset processes and apparatuses enabling responsive action thereto.

In another aspect, an embodiment of invention provides a surveillance system: apparatus and method comprised of an improved decision method as to the accuracy or validity for at least one process signal parameter given an observation of at least one actual signal from the asset.

In another aspect, an embodiment of invention provides a surveillance system: apparatus and method comprised of an improved system and method for ultra-sensitive detection of a fault or error state of signal sources and/or asset processes and apparatuses wherein the parameter estimation technique used for the generation of at least one virtual signal parameter is a multivariate state estimation technique (MSET) having any one of a plurality of pattern recognition matrix operators, training procedures, and operating procedures.

In another aspect, an embodiment of invention provides a surveillance system: apparatus and method comprised of an improved system and method for ultra-sensitive detection of a fault or error state of signal sources and/or asset processes and apparatuses wherein the parameter estimation technique used for the generation of at least one virtual signal parameter is a kernel regression technique having any one of a plurality of structures, training procedures, and operating procedures.

In another aspect, an embodiment of invention provides a surveillance system: apparatus and method comprised of an improved system and method for ultra-sensitive detection of a fault or error state of signal sources and/or asset processes and apparatuses wherein the parameter estimation technique used for the generation of at least one virtual signal parameter is a neural network having any one of a plurality of structures, training procedures, and operating procedures.

In another aspect, an embodiment of invention provides a surveillance system: apparatus and method comprised of an improved system and method for ultra-sensitive detection of a fault or error state of signal sources and/or asset processes and apparatuses wherein the parameter estimation technique used for the generation of at least one virtual signal param-

eter is a mathematical process model having any one of a plurality of structures, training procedures, and operating procedures.

In another aspect, an embodiment of invention provides a surveillance system: apparatus and method comprised of an improved system and method for ultra-sensitive detection of a fault or error state of signal sources and/or asset processes and apparatuses wherein the parameter estimation technique used for the generation of at least one virtual signal parameter is an autoregressive moving average (ARMA) model having any one of a plurality of structures, training procedures, and operating procedures.

In another aspect, an embodiment of invention provides a surveillance system: apparatus and method comprised of an improved system and method for ultra-sensitive detection of a fault or error state of signal sources and/or asset processes and apparatuses wherein the parameter estimation technique used for the generation of at least one virtual signal parameter is a Kalman filter model having any one of a plurality of structures, training procedures, and operating procedures.

In another aspect, an embodiment of invention provides a surveillance system: apparatus and method comprised of a novel system and method for using at least one of a plurality of methods to classify the state of a residual error signal produced by the mathematical difference between two signals, said two signals being either actual and/or predicted signals, into one of at least two categories.

In another aspect, an embodiment of invention provides a surveillance system: apparatus and method comprised of a novel system and method to classify the state of a residual error signal wherein said classification is made to distinguish between a normal signal and an abnormal signal.

In another aspect, an embodiment of invention provides a surveillance system: apparatus and method comprised of a novel system and method to classify the state of a residual error signal wherein said classification is performed using a statistical hypothesis test having any one of a plurality of probability density function models, training procedures, and operating procedures.

In another aspect, an embodiment of invention provides a surveillance system: apparatus and method comprised of a novel system and method to classify the state of a residual error signal wherein said classification is performed using a probability density function model having any one of a plurality of structures, training procedures, and operating procedures.

In another aspect, an embodiment of invention provides a surveillance system: apparatus and method having fault cause and operating mode partitioning.

Moreover, it should be apparent that numerous structural modifications and adaptations may be resorted to without departing from the scope and fair meaning of the present invention as set forth hereinabove and as described herein below by the claims.

I claim:

1. A method for performing surveillance of an asset, the steps including:

obtaining residual data correlative to asset operation;
fitting a mathematical model to the obtained residual data and storing the mathematical model in a memory means;

obtaining a current set of observed signal data from the asset;

using the mathematical model in a sequential hypothesis test for determining if the current set of observed signal data is indicative of an asset fault condition;

determining an asset fault cause correlative to a determined indication of an asset fault condition; and providing an indication correlative to a determined asset fault cause for providing asset surveillance.

2. The method of claim 1 wherein the step of determining an asset fault cause includes a step of determining a most probable asset fault cause from a plurality of possible asset fault causes.

3. The method of claim 2 wherein the step of determining the most probable asset fault cause from the plurality of possible asset fault causes includes a step of utilizing a Bayesian belief network to determine the probability of at least one possible asset fault cause.

4. The method of claim 1 further including a step of providing a response to a provided indication correlative to a determined asset fault cause.

5. The method of claim 4 wherein the step of providing the response includes a step of providing a control action.

6. The method of claim 4 wherein the step of providing the response includes a step of providing an alarm action.

7. The method of claim 1 wherein the step of obtaining residual data correlative to asset operation includes a step of transforming the residual data to remove noise from the residual data.

8. The method of claim 1 wherein the step of obtaining residual data correlative to asset operation includes a step of obtaining residual data correlative to at least two modes of asset operation.

9. The method of claim 8 further including a step of dividing the obtained residual data into a plurality of residual data subsets each having at least one mode of asset operation associated thereto.

10. The method of claim 9 further including a step of fitting at least one mathematical model to at least one of the plurality of residual data subsets for defining at least the one mathematical model stored in the memory means.

11. A method for performing surveillance of an asset, the steps including:

obtaining a current set of observed signal data from the asset;

determining a mode of asset operation correlative to the current set of observed signal data obtained from the asset;

retrieving at least one mathematical model from a memory means as a function of the determined mode of asset operation for obtaining at least one retrieved mathematical model, and

using at least the one retrieved mathematical model in a sequential hypothesis test for determining if the current set of observed signal data is indicative of an asset fault condition for providing asset surveillance.

12. The method of claim 1 further including a step of obtaining residual data correlative to at least two modes of asset operation.

13. The method of claim 12 further including a step of dividing the obtained residual data into a plurality of residual data subsets each having at least one mode of asset operation associated thereto.

14. The method of claim 13 further including a step of fitting at least one mathematical model to at least one of the plurality of residual data subsets for defining at least the one mathematical model stored in the memory means.

15. The method of claim 14 wherein the fitting step includes a step of fitting at least one mathematical function correlative to a frequency distribution to at least one of the plurality of residual data subsets for defining at least the one mathematical model stored in the memory means.

16. The method of claim 11 further including a step of determining an asset fault cause correlative to a finding of an asset fault condition.

17. The method of claim 16 wherein the step of determining an asset fault cause includes a step of determining a most probable asset fault cause from a plurality of possible asset fault causes.

18. The method of claim 17 further including a step of providing an indication correlative to a determined most probable asset fault cause.

19. The method of claim 18 further including a step of providing a response to a provided indication correlative to a determined most probable asset fault cause.

20. The method of claim 19 wherein the step of providing the response includes a step of providing a control action.

21. The method of claim 19 herein the step of providing the response includes a step of providing an alarm action.

22. A system for performing surveillance of an asset, said system comprising in combination:

means for obtaining a current set of observed signal data from the asset;

means for performing a sequential hypothesis test for determining if the current set of observed signal data is indicative of an asset fault condition;

means for determining an asset fault cause correlative to a determined indication of an asset fault condition; and means for providing an indication correlative to a determined asset fault cause for providing asset surveillance.

23. The combination of claim 22 further including means for obtaining residual data correlative to at least two modes of asset operation and means for dividing the acquired residual data into a plurality of residual data subsets each having at least one mode of asset operation associated thereto.

24. The combination of claim 23 further including means for fitting at least one mathematical model to at least one of the plurality of residual data subsets and storing at least the one mathematical model in a memory means.

25. The combination of claim 24 further including means for determining a mode of asset operation correlative to the current set of observed signal data obtained from the asset, means for retrieving at least one mathematical model from

said memory means as a function of the determined mode of asset operation for obtaining at least one retrieved mathematical model, and means for using at least the one retrieved mathematical model in performing the sequential hypothesis test for determining if the current set of observed signal data is indicative of an asset fault condition.

26. The combination of claim 22 wherein said determining means includes means for determining a most probable asset fault cause correlative to a determined indication of an asset fault condition from a plurality of possible asset fault causes.

27. The combination of claim 26 further including means for providing an indication correlative to a determined most probable asset fault cause.

28. The combination of claim 27 further including means for providing a response to an indication correlative to a determined most probable asset fault cause.

29. The combination of claim 28 wherein said means for providing a response includes means for providing a control action to an indication correlative to a determined most probable asset fault cause.

30. The combination of claim 28 wherein said means for providing a response includes means for providing an alarm action to an indication correlative to a determined most probable asset fault cause.

31. A method for performing surveillance of an asset, the steps including:

obtaining a current set of observed signal data from the asset;

performing a sequential hypothesis test for determining if the current set of observed signal data is indicative of an asset fault condition;

determining an asset fault cause correlative to a determined indication of an asset fault condition; and

providing an indication correlative to a determined asset fault cause for providing asset surveillance.

32. A computer readable medium having a program recorded thereon in which the program causes, in use, a computer running the program to execute a procedure according to the method of claim 31.

* * * * *