



US006841359B2

(12) **United States Patent**
Szostak et al.

(10) **Patent No.:** US 6,841,359 B2
(45) **Date of Patent:** Jan. 11, 2005

(54) **STREPTAVIDIN-BINDING PEPTIDES AND USES THEREOF**

(75) Inventors: **Jack W. Szostak**, Boston, MA (US);
David S. Wilson, Hayward, CA (US);
Anthony D. Keefe, Cambridge, MA (US)

(73) Assignee: **The General Hospital Corporation**, Boston, MA (US)

(*) Notice: Subject to any disclaimer, the term of this patent is extended or adjusted under 35 U.S.C. 154(b) by 67 days.

(21) Appl. No.: **10/004,381**

(22) Filed: **Oct. 31, 2001**

(65) **Prior Publication Data**

US 2002/0155578 A1 Oct. 24, 2002

Related U.S. Application Data

(60) Provisional application No. 60/244,541, filed on Oct. 31, 2000.

(51) **Int. Cl.⁷** **C12P 21/06**

(52) **U.S. Cl.** **435/69.1**

(58) **Field of Search** 435/69.1; 530/300,
530/350; 512/2

(56) **References Cited**

U.S. PATENT DOCUMENTS

5,506,121 A 4/1996 Skerra et al.
5,821,047 A 10/1998 Garrard et al.
6,103,493 A 8/2000 Skerra et al.
6,326,157 B1 * 12/2001 Nolan et al. 435/7.1

FOREIGN PATENT DOCUMENTS

WO WO 98/31700 7/1998

OTHER PUBLICATIONS

Katz BA. Binding to protein targets of peptidic leads discovered by phage display: crystal structures of streptavidin-bound linear and cyclic peptide ligands containing the HPQ sequence. *Biochemistry*. 1995 Nov. 28;34(47):15421-9.*

Bayer et al., "Postsecretory modifications of streptavidin," *Biochem. J.* 259:369-376 (1989).

Cho et al., "Constructing high complexity synthetic libraries of long ORFs using in vitro selection," *J. Mol. Biol.* 297:309-319 (2000).

Clackson et al., "In vitro selection from protein and peptide libraries," *TIBTECH*. 12:173-184 (1994).

Devlin et al., "Random peptide libraries: A source of specific protein binding molecules," *Science* 249:404-406 (1991).

Giebel et al., "Screening of cyclic peptide phage libraries identifies ligands that bind streptavidin with high affinities," *Biochemistry* 34:15430-15435 (1995).

Haupt et al., "Binding sites for lactogenic and somatogenic hormones from rabbit mammary gland and liver," *J. Biol. Chem.* 258:305-314 (1983).

Katz et al., "Topochemical catalysis achieved by structure-based ligand design," *J. Biol. Chem.* 270:31210-31218 (1995).

Katz et al., "In crystals of complexes of streptavidin with peptide ligands containing the HPQ sequence the pK_a of the peptide histidine is less than 3.0," *J. Biol. Chem.* 272:13220-13228 (1997).

Katz et al., "Structural and mechanistic determinants of affinity and specificity of ligands discovered or engineered by phage display," *Annu. Rev. Biophys. Biomol. Struct.* 26:27-45 (1997).

Kay et al., "An M13 phage library displaying random 38-amino-acid peptides as a source of novel sequences with affinity to selected targets," *Gene*. 128:59-65 (1993).

Lam et al., "A new type of synthetic peptide library for identifying ligand-binding activity," *Nature* 354:82-84 (1991).

Liu et al., "Optimized synthesis of RNA-protein fusions for in vitro protein selection," *Methods Enzymol.*, 318:268-293 (2000).

McLafferty et al., "M13 bacteriophage displaying disulfide-constrained microproteins," *Gene* 128:29-36 (1993).

McCafferty et al., "Phage antibodies: filamentous phage displaying antibody variable domains," *Nature* 348:552-554 (1990).

Ostergaard et al., "Novel avidin and streptavidin binding sequences found in synthetic peptide libraries," *FEBS Letters* 362:306-308 (1995).

Roberts et al., "RNA-peptide fusions for the in vitro selection of peptides and proteins," *Proc. Natl. Acad. Sci.* 94:12297-12302 (1997).

Roberts, "Totally in vitro protein selection using mRNA-protein fusions and ribosome display," *Curr. Opin. Chem. Biol.* 3:268-273 (1999).

Schmidt et al., "The random peptide library-assisted engineering of a C-terminal affinity peptide, useful for the detection and purification of a functional Ig Fv fragment," *Protein Eng* 6:109-122 (1993).

Schmidt et al., "Molecular interaction between the *Strep*-tag affinity peptide and its cognate target," *J. Mol. Biol.* 255:753-766 (1995).

Scott et al., "Searching for peptide ligands with an epitope library," *Science* 249:386-390 (1990).

(List continued on next page.)

Primary Examiner—Karen Cochrane Carlson
Assistant Examiner—Sheridan K Snedden
(74) *Attorney, Agent, or Firm*—Clark & Elbing LLP

(57) **ABSTRACT**

The invention provides peptides with high affinity for streptavidin. These peptides may be expressed as part of fusion proteins to facilitate the detection, quantitation, and purification of proteins of interest.

OTHER PUBLICATIONS

Weber et al., "Crystal structure and ligand-binding studies of a screened peptide complexed with streptavidin," *Biochemistry*, 31:9350-9354 (1992).

Zang et al., "Tight-binding streptavidin ligands from a peptide library," *Bioorg. Med. Chem. Lett.* 8:2327-2332 (1998).

Jack W. Szostak, "Evolution of Novel Proteins from Random-Sequence Libraries" 2000 (Abstract).

Szostak and Keefe, "ATP-Binding Proteins Selected from a Random-Sequence Polypeptide Library," *The Protein Society, Fourteenth Symposium, Program and Abstracts*, vol. 9:Suppl. 1, San Diego, CA, pp. 19 and 84, 2000.

Caparon et al., "Analysis of Novel Streptavidin-Binding Peptides, Identified Using a Phage Display Library, Shows that Amino Acids External to a Perfectly Conserved Consensus Sequence and to the Presented Peptides Contribute to Binding," *Molecular Diversity* 1:241-246 (1995).

Katz, "Streptavidin-Binding and -Dimerizing Ligands Discovered by Phage Display, Topochemistry, and Structure-Based Design," *Biomolecular Engineering* 16:57-65 (1999).

Wilson et al., "The Use of mRNA Display to Select High-Affinity Protein-Binding Peptides," *PNAS* 98:3750-3755 (2001).

* cited by examiner

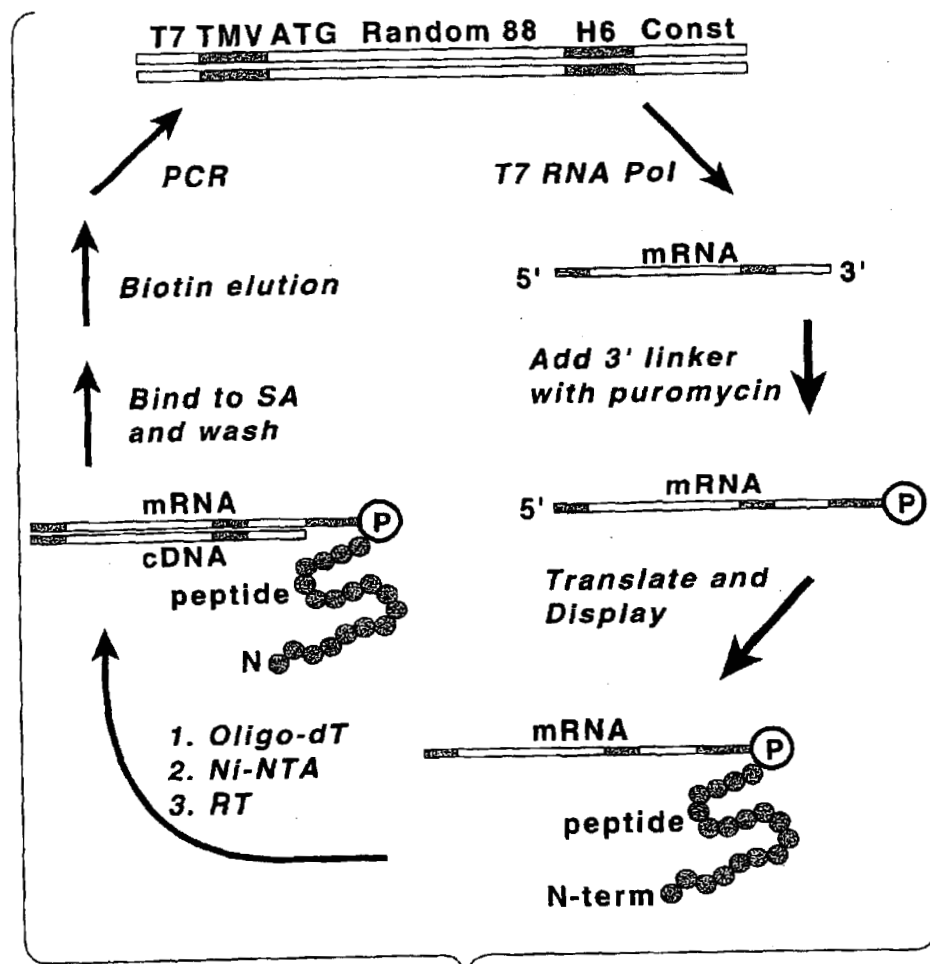


Fig. 1A

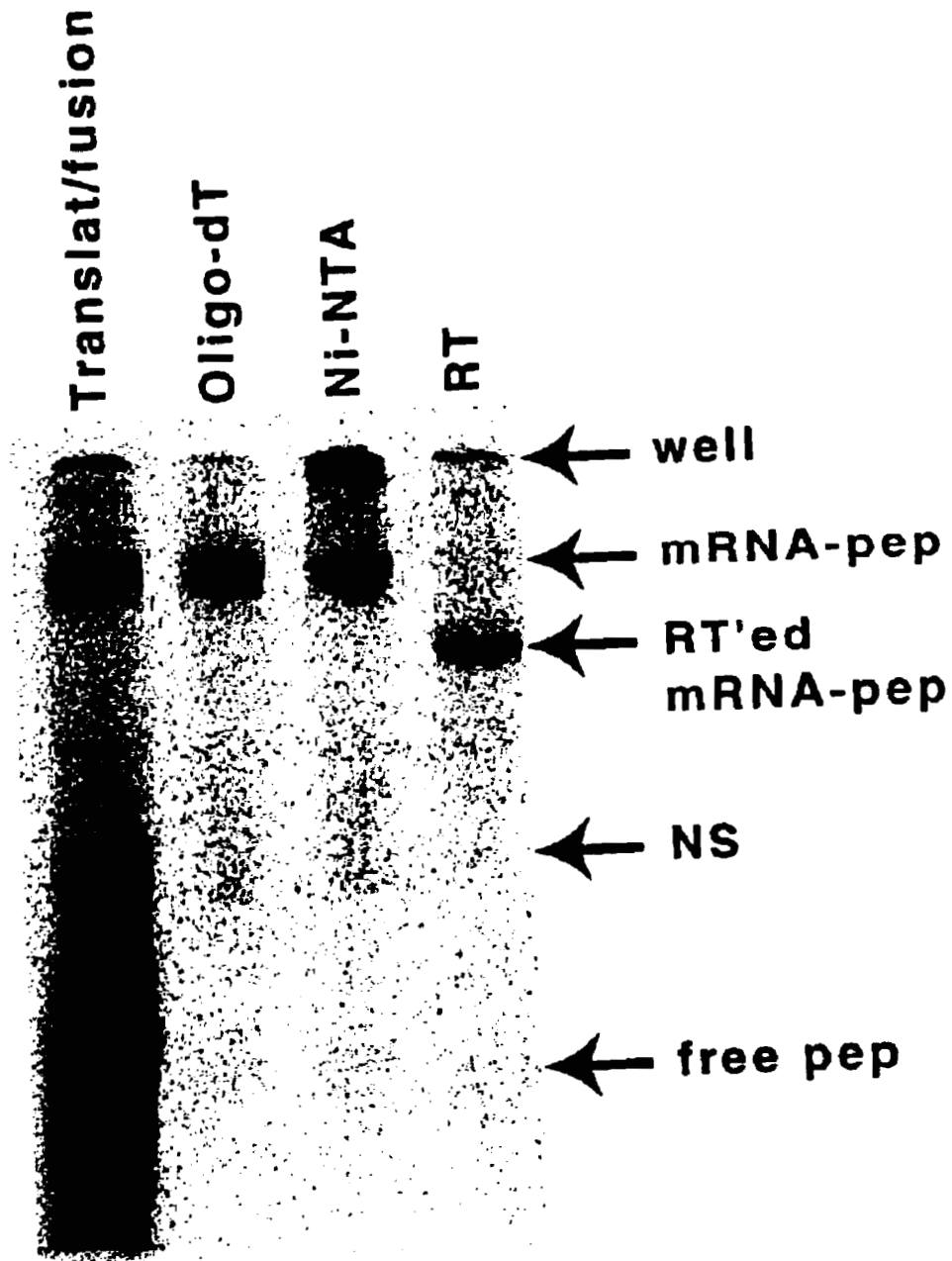


Fig. 1B

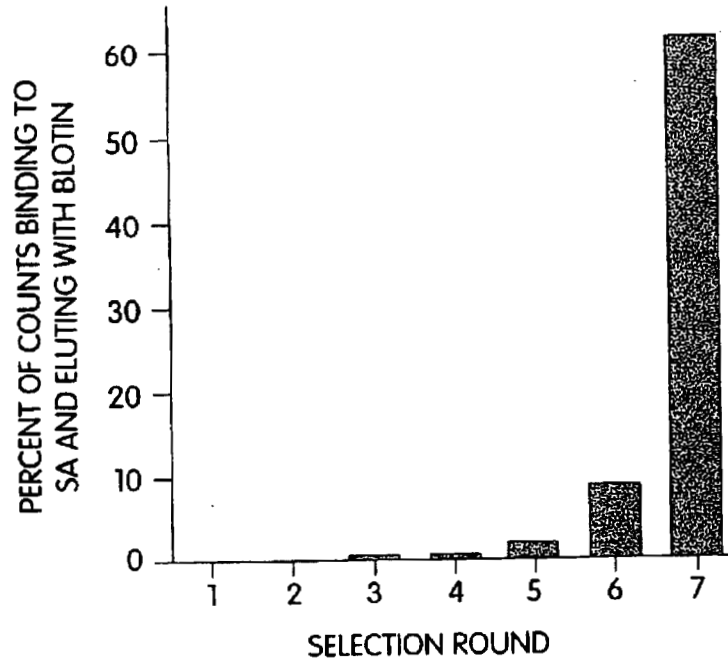


Fig. 2A

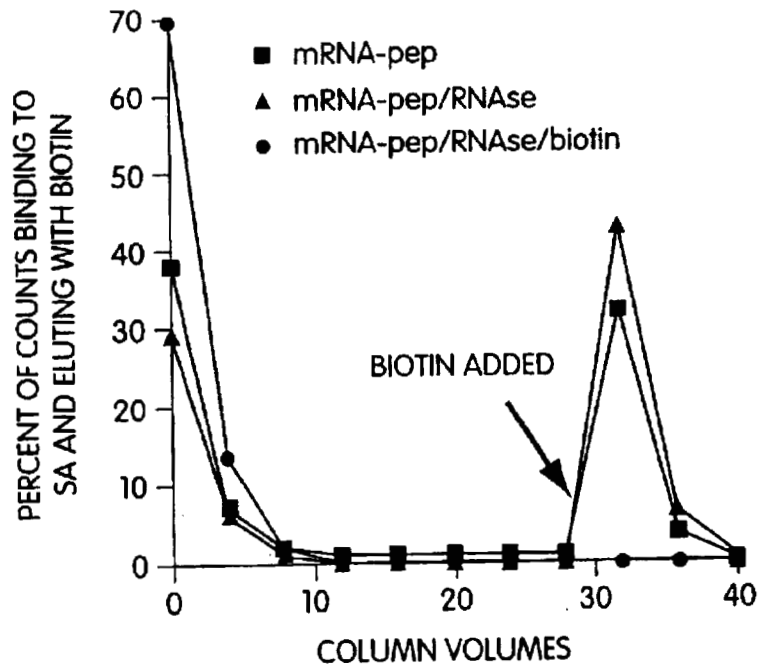


Fig. 2B

		SEQ ID NO:
name #		
SB1	3	<u>MDEKTHCTISMGAVPLVPHHPQGDPLRLHRPQAPALLVRRHPQGDVALVVEHHEGVDRGLVALPELHAEELGEPVGDVQGPVEQVQGVVDALVWRLLPPS</u>
SB2	2	<u>MDEKTHCFHPGDHLVRLVEELQALAEGLQRCGRQPHRLPRRRPHLQLLDLEAHPQAGPLRERAHQVDRGLLQHPQGDRLIQQPODHPLELVWRLLPPS</u>
SB3	4	<u>MTRRPTASSSSCVRHLLRQGEHGHQALEDRDKARHVRVVEGDVEVLGGDLRLARARHEALHPQAGLVHLPLHGGDIGHHLRVLVLEAHPQGDRLGLAVHHH</u>
SB4	1	<u>MDEKTHWGISTWRGEPLLHPQAGRLPLDRRARHRRILGAEPGVHGLRLELDDHRPLVPDHPQRCPLQRCGLPQVVPVLRHRAHVLGGLAAATIT</u>
SB5	3	<u>MDEKTHWNVVYHPQGDLLVRGHGHVVEALHDQGLHQLDLLVGPPEVVRALRGEVLGGLRRLVPLDHPQGEALDQARQRPQHLELHHRALPPALVWRLLPPS</u>
SB6	1	<u>MDEKTHWLNFFELLARLDGLREGEDHPLVLRHPQGDGLLDQPLGRHRALDGEVREGDRPLDQGGEDIGALVDDDGEVLDGLVHVGVHVDPLVCGCHHH</u>
SB7	1	<u>MDEKTHWFGTILNSFPTHMSAVGNKIDCSFNMLSLNHWLSSGHPDICALDQHPQGDALVGRDDGVVQALRLEGGHQHRRLAQRRAADRHRQLVWRLLPPS</u>
SB8	1	<u>MDEKTHCTIELNFSFTHWKLHHPQGDALLDDGVRPHHPLAVEGRHDLVEGLLLEHPQGDPLVAHRQLVHHPLLGRGERHRRALVPELVERHRGLVPLRHGGERHAEPLVWRLLPPS</u>
SB9	1	<u>MDEKTHCNTGLYDGAADCNENLKVAPLVEGRHDLVEGLLLEHPQGDPLVAHRQLVHHPLLGRGERHRRALVPELVERHRGLVPLRHGGERHAEPLVWRLLPPS</u>
SB10	1	<u>MDEKTHWHERAQELVGGLLLDHPQRLLEPRGPRPLRGLVHERGHQPLAGRVEADGGGLRDGGGELEPLVREGEDHLEPLDDELDAQPRGLVWRLLPPS</u>
SB11	1	<u>MDEKTHWHERVHHLADGLEQHPQQRRLPVERHRQVPRGLVRELQHEGLPEHPAGVHVIRLHQGDDRDVGLVDGGRDVRGLEREVGDGPHRLVWRLLPPS</u>
SB12	4	<u>MDKDFLLEELERLVRHPQGLLPLRGQVGHDAERLGAEVDDLRGGLLDEPQRAVAGLHHVPHRVGQRLVHEVRELDGGLLDQRDDLRQLVWRLLPPS</u>
SB13	2	<u>MEREDPLDEQLREUREALVDRHPQGAQALHRHDGGEHVPLRRVQHRQLQFGLQHLEFPQLGGLGELQARLQPLAGEHEGDGAGLQRVPHQGRRLVWRLLPPS</u>
SB14	1	<u>MDEKTHRTLSVSLSFNDWLGQTKACWRLVEGLHHPQGLVREHEVDVPLAEVQVVGGLADGVEQPGGGLLHRAQRVDPHLPDHPAGQVLRGLVWRLLPPS</u>
SB15	1	<u>MDEKTHWLEDLKGVLKDCIKDLMDFTKDCRSPRVQPLLHHRGEPVPLREAGRDGLGPRAPRQARPLHGRHDLHEPLVQDHPQGGPLVCGCHHH</u>
SB16	1	<u>MDEKTHWVILQHPQGDRLGPRHGGDDVRLVQGEVLEGLDGRPRRRHRLPREDEHRVALVDQVRDLAERLVEEVDGGVEALRHGLGLPQDEPRSGGCHHH</u>
SB17	2	<u>MDEKTHWVGDLOEPLGPHGGVGEVPGGLVLRHPQRDLVGVGPHGRALARRPHRVVEGLHLLQRGERLPPDGPRLGGLGGELEDRAADPALVWRLLPPS</u>
SB18	1	<u>MDEKTHCAVNVNVLTHWCHRVAHLQPLDHPQGDHLRLEPLGHALVDPIVQGVVEVVRPLQLDVGQVQVAVQVAVVEGGLDHEAGQAHGALVWRLLPPS</u>
SB19	1	<u>MDEKTHWVGRGHVVEGLAGELEQLRARLEHPQGREPLVQEVDEGLVQDLHGVVAGLLDPVEKLLTDWFKKFNKNSKDCMFFYLEMTYDWSGGCHHH</u>
SB20	1	<u>MNEKTHCKLNFKVNIADWLAEFHGGGGLLRDRDGVVQRLVDGQVVERLDRDPGLDRLLELHHRDRRLRGGELLRDHPLEPDHLLVVGGLVWRLLPPS</u>

Fig. 3



Fig. 4A

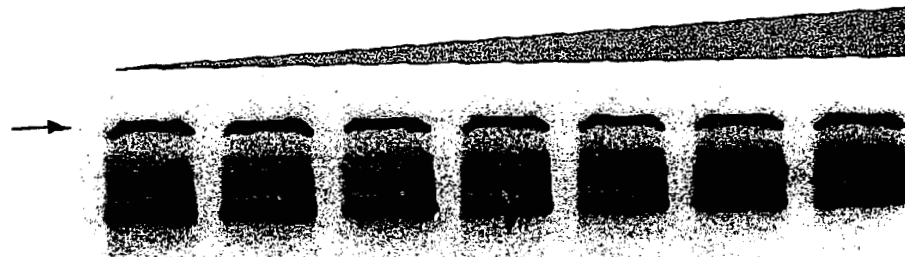


Fig. 4B

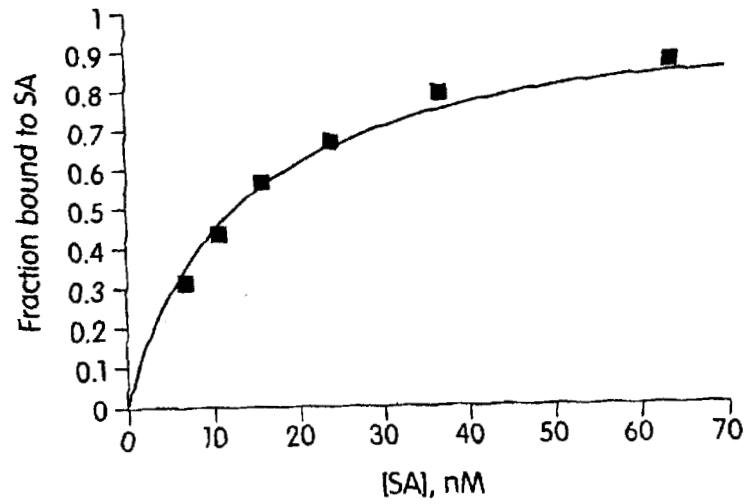


Fig. 4C

		% binding	SEQ ID NO:
FL	MDEKTTGWRGGHVVVEGLAGELEQLRARLEHHPGGQREPLVQEVEDVDEGLVQDLHGIVVAGLLDPVEKLLTDMFKFKFNVSKDCKMTFYLEM	85	21
C1	MDEKTTGWRGGHVVVEGLAGELEQLRARLEHHPGGQREPLVQEVEDVDEGLVQDLHGIVVAGLLDPVEKLLTDMFKFKFNVS	87	22
C2	MDEKTTGWRGGHVVVEGLAGELEQLRARLEHHPGGQREPLVQEVEDVDEGLVQDLHGIVVAGLLDPVE	88	23
C3	MDEKTTGWRGGHVVVEGLAGELEQLRARLEHHPGGQREPLVQEVEDVDEGLVQ	89	24
C4	MDEKTTGWRGGHVVVEGLAGELEQLRARLEHHPGGQREPLVQEVEDVDEGLVQ	88	25
M1	MDEKTTGWRGGHVVVEGLAGELEQLRARLEHHPGGQREPLVQEVEDVDEGLVQDLHGIVVAGLLDPVEKLLTDMFKFKFNVSKDCKMTFYLEM	0.065	26
N1	MD CHVVEGLAGELEQLRARLEHHPGGQREPLVQEVEDVDEGLVQDLHGIVVAGLLDPVEKLLTDMFKFKFNVSKDCKMTFYLEM	69	27
N2	MD EQLAGELEQLRARLEHHPGGQREPLVQEVEDVDEGLVQDLHGIVVAGLLDPVEKLLTDMFKFKFNVSKDCKMTFYLEM	30	28
N3	M ELEQLRARLEHHPGGQREPLVQEVEDVDEGLVQDLHGIVVAGLLDPVEKLLTDMFKFKFNVSKDCKMTFYLEM	0.058	29

Fig. 5

(SEQ ID No.: 37)

ATCCGGATATAGTTCCTCCCTTTCAGCAAAAAACCCCTCAAGACCCCGTTTAGAGGCCCAAGGGGTTATGCTAGTTATTGC
 TCAGCGGTGGCAGCAGCCAACTCAGCTTCCTTTCGGGCTTGGTAGCAGCCGGATCTCAGTGGTGGTGGTGGTGGTGGTGGTGC
 GAGTGGGCCGCAAGCTTTTAGTTCATGTCCATGATAGGTGTCGTCCCGATATCAATGCTATTGTTAAAGCAGGTCT
 TACACATGTTATAGATCCTCAAAATGCTTGTCTTCCACTTCCAGTTCGGGGAGCCACTTGCATTTCACACAAGGGTCC
 ATGCTACCTCGGGGTACCAAGAAATTCGTGATGATGGTGTGACCCGGATCTTGGTTCAGTTGACCTTGTGGGTGAIG
 CTCCAGTCGTGCACGAAAGTTGTTCAAGTTCGCCAGCCAGTCTTCAACAACGTGTCCACTCGCCCAACCCAGTGGTCTTCT
 CGTCCATCCCTGAGCCGCTACCTCCTGAGCTCGAATAGTCTGCCGCTTTCAGGGCTTCATCGACAGTCTGACGACCG
 CTGGCCGGCTTGATCACCCGCACTACCCAGGATACCAGAAAAGCGGACATCTGCCGGATGTTCCGGCATGATTCACCTTT
 CTGGCCGTTTTCCATTTGTGGGGCAATACGTGGATCTTTCGCCCACTCTTCCCTGTAAGACTTCAGCCGCTACGGCACCCA
 GCGGTTTGTCTTATTAACCGCTTCCAGACCTTCATCAGTCAAGCAGATAGTTTCAGAGAACTCTTTTGCCAGCTCTTTG
 TTCGGACTGGCCGGTAAATACCTGCCCTCAGCACCCCAACGACGGTTGGATGGTTGACCCCTGAAGGTCGGCAGTAC
 CGTTACACCAATAATTCACCTTGTGCTGATGGTGGATGTTGGACCATGCCACGGCCGTTGATGGTTCATCGCTGTTTCGCCCTT
 TATTAAGGCAGCTTCTGCCGATGGATAATCGGTGCTGATTCATGTGTGTTTATTAATCAGGTCACCCAGGAAGTC
 AGACCCGCTTCCGCCAGCTTATCCACGCCACGCTTAAATGTCGTACTGCCGTTTCATACTTGAACGCATAACC
 CCGCTCAGCAGCAATCAGCCGCGGATGAAGTACGGTCTTGCAGGTTGAACATCAGCCGCTTACCTTCGCTTCA
 GTTCTTTATCCAGGCCGGATCTCTTCCAGTTTTGGGGTTCGGCAGCAGACTTGTGTTAATAATCAGCGATAAC
 GCTTCAACAGCGATCGGGTAAGCAATCAGCTTGCCGTTGTAAACGTACGGTACGGCATCCAGTAAACGGATACAGCTTGTCTG
 GAACGCTTGTCCGGGTGATTCAGCCAAACAGGCCAGATTGAGCGTAGCCCAAAAGCGGTCGTTGCCCAGAAGATRA
 TGTACGGGCCATCGCCAGTTGCCGCAACCTGTGGAAATTTCTCTTCCAGTTATCCGGATGCTCAACGGTGACTTTAATT
 CCGGTATCTTCTCGAATTTCTTACCGACTTCAGCGAGACCGTTATAGCCTTATCGCCGTTAATCCAGATTACCAGTTT
 ACCTTCTTCGATTCGCCATGGTATATCTCCTTCTTAAAGTTAAACAATAATTTCTAGAGGGGAATTTGTTATCCGCTCAC
 AATTCGCCCTATAGTGAGTCGTTAAATTCGGGGATCGAGATCTCGATCCTTACGCCGGACGCATCGTGGCCGGCATC
 ACCGGCCGACACAGGTGCGGTGCTGGCGCTATATCGCCGACATCACCGATGGGGAAGATCGGGCTCGCCACTTCGGGCT
 CATGAGCGCTTGTTCGGCGTGGTATGGTGGCAGGCCCGTGGCCGGGACTGFTGGCGCCACTCTCCTTGCATGCAC
 CATTCTTGGCCGGGCTCAACGCTCAACCTACTACTGGCTGCTTCCPAATGACGAGTCCGATAAAGGGAGAG
 CGTCGAGATCCCGAACACCATCGAATGGCGCAAAACCTTTCGGGGTATGGCATGATAGCCGCCCGGAAGAGTCAATCA
 GGTGGTGAATGTGAACCCAGTAACGTTATACGATGTCCGAGAGTATGCCGTTGCTCTTATCAGACCGTTTCCCGCGTG
 GTGAACCCAGCCAGCAGTTCTGCGAAAAGCGGGGAAAAAGTGGAAAGCGGCGATGGCGGAGCTGAATTACATTCCCAA
 CCGCGTGGCACAAACACTGGGGGGCAACAGTCTGTTGCTGATTTGGCGTTGCCACCTCCAGTCTGGCCCTGCACGGCCCGT

Fig. 6A

GCTCAGCGTAGGTAATCTCAGTTCGGTGTAGGTCGGTCCCAAGCTGGGCTGTGTGCCAAGAACCCCGCTTCAGCCC
GACCGCTGCGCCCTTATCCGGTAACATACTGCTCTGAGTCCAACCCGGTAAGACACGACTTATCGCCACTGGCAGCAGCCAC
TGGTAACAGGATTAGCAGAGCGAGGTATGAGCGGTGTACAGAGTCTTGAAGTGGTGGCCTAACACGCTACACTACGCTACACTA
GAAGACAGTATTTGGTATCTGCGCTCTGCTGAAGCCAGTTACCTTCGGAAAGAGTGGTAGCTCTTGATCCGGCAAA
CAAACCCGCTGGTAGCGGTGGTTTTTTGTTGCAAGCAGAGATTACGGCAGAAAAGGATCTCAAGAAGATCC
TTTTGATCTTTTCTACGGGTCTGACGCTCAGTGGAAACGAAACTCACGTTAAGGATTTTGGTCATGAACAATAAAAATG
TCTGCTTACATAAACAGTATAACAAGGGTGTATGAGCCATATTCACGGGAAACGCTTGTCTCTAGGCCGCGATTAAA
TTCCAAACATGGATGCTGATTTATATGGGTATAAATGGGCTCGCGATAATGTCCGGCAATCAGGTCCGACAAATCTATCGAT
TGATGGGAAGCCCGATGCGCCAGAGTTGTTCTGAAACATGGCAAGGTAGCGTTGCCAATGATGTTACAGATGAGATG
GTCAGACTAAACTGGCTGACGGAAATTTATGCCICTTCCGACCATCAAGCATTTTATCCGTACTCTCTGATGATGCATGGTT
ACTCACCACTGCGATCCCCGGGAAACAGCATTCAGGATATAGAAAGTATCCTGATTCAGGTGAAAATATTTGTTGATG
CGTGGCAGTGTCTCTGCGCCGGTTGCATTCGATTCCTGTTGTAATGTCCTTTTAAACAGCGATCCGGTATTTTCGTCTC
GCTCAGGCGCAATCACGAATGAATAACGGTTGGTTGATGCGAGTGATTTGATGACGAGCGTAATGGCTGGCCTGTGTA
ACAAGTCTGGAAAGAAATGCATAAACTTTTGCCATTTCCACGGATTCAGTCCGTCACCTCATGGTGATTTCTCACTTGATA
ACCTTATTTTGACGAGGGGAAATTAATAGGTTGATGTTGGACGAGTCGGAATCCGACACCGATACCAGGATCTT
GCCATCCTATGGAACTGCCCTCGGTGAGTTTCTCCTTCATTACAGAAACGGCTTTTCAAAAATATGGTATTGATAATCC
TGATATGAATAAATGCAGTTTCAATTTGATGCTCGATGAGTTTTTCTAAGAATTAATTCATGAGCGGATACATATTTGAA
TGTATTTAGAAAAATAAACAAATAGGGTTCGGCACATTTCCCGAAAAGTGCCACCTGAAAATGTAAACGTTAAATAT
TTTGTAAAAATTCGGCTTAAATTTTGTAAATCAGCTCATTTTTTAACCAATAGGCCGAAAATCGGCAAAATCCCTTATA
AATCAAAAGAAATAGACCGAGATAGGGTTGAGTGTGTTCCAGTTTGGAAACAAGAGTCCACTATTAAGAACGTTGGACTCC
AACGTCAAAGGGGAAAAACCGTCTATCAGGGCGATGGCCCACTACGTGAACCATCACCCCTAATCAAGTTTTTTGGGGTC
GAGGTGCCGTAAAGCACTAAATCGGAACCTAAAGGGAGCCCCCGATTTAGAGCTTGACGGGAAAGCCGGCGAACGTTGG
CGAGAAAAGGAAGGAAGCAAGGAGCGGGCTAGGGCGCTGGCAAGTGTAGCGGTCACGCTGCGCGGTAACCCACC
ACACCCCGCGGCTTATGCGCCGCTACAGGGCGGCTCCCATTCGCCA

Fig. 6A (continued)

(SEQ ID No.: 38)

MGIEEGLVIWINGDKYNGLAEVGKKFEKDTGIKVTVEHPDKLEEKFPQVAATGDGPDIFWAHDRFGGYAQSGLLAEI
 TPKAFQDKLYPFTWDAVRYNGKLIAYPIAVEALS LIYNKDLLPNPPKTWEEIPALDKELKAKGKSALMFNLQEPYFTWP
 LIAADGGYAFKYENGYDIKDVGVNDNAGAKAGLTFVLVDLIKKNHMNADTDYSIAEAAFNKGETAMTINGPWAWNSNIDTSK
 VNYGVTVLPTFKGQPSKPFVGVLSAGINAASPNKELAKEFLENYLLTDEGLEAVNKDKPLGAVALKSYEEELAKDPRIAA
 TMENAQKGEIMPNI PQMSAFWYAVRTAVINAASGRQTVDEALKDAQTNSSSGSGSGMDEKTTGWRGGHVVEGLAGELEQ
 LRARLEHHPQGREPGSGHHHHHEFFLVPRGMDPCVKCKVAPRNWVKVKNKHLRIYNMCKTCFNNSIDIGDDTYHGHDD

Fig. 6B

(SEQ ID No.: 39)

MDPCVKCKVAPRNWVKVKNKHLRIYNMCKTCFNNSIDIGDDTYHGHDD

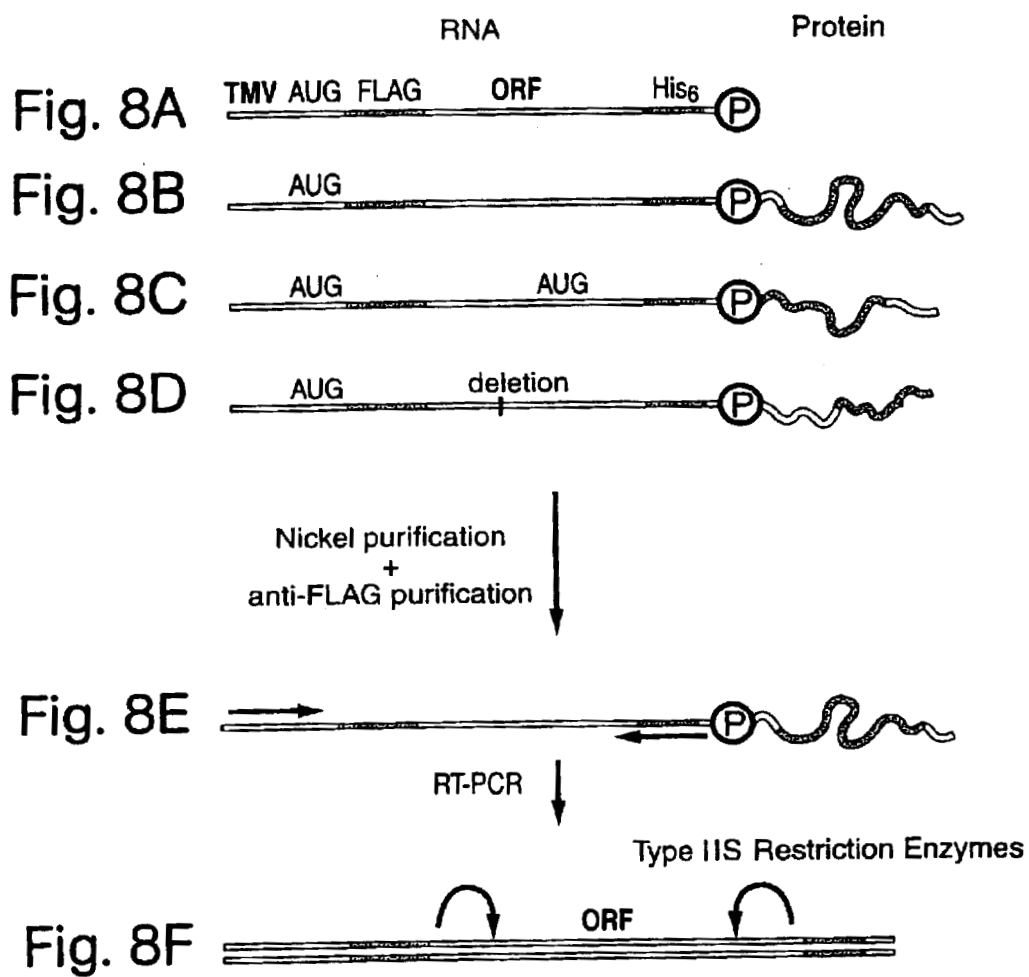
Fig. 6C

██████████
MDEKTTGWRGGHVVEGLAGELEQLRARLEHHPQGGQREP
██████████ ██████████ ██████████

Fig. 7A



Fig. 7B



(SEQ ID No. :40)

ATCCGGATATAGTTCCTCTTTCAGCAAAAACCCCTCAAGACCCCGTTTAGAGGCCCAAGGGGTTATGCTAGTTATTTGC
TCAGCGGTGGCAGCAGCCAACCTCAGTTCCTTTCGGGCTTGTAGCAGCCGGATCTCAGTGTGGTGGTGGTGGTGGTGG
GAGTGGCGCCGCAAGCTTCAGTTCGGAAGCTTATTAGAATTTCGTGATGATGTGTGACCCGATCCTGGTTACAGTT
GACCTTGTGGGTGATGTCAGTCGTCACGAAGTGTCAAGTTCGCCAGCACGTCCTTCAACAACAGTGTCCACCTCCG
CAACCAAGTGTCTTCTCGTCCATCCCTGAGCCGCTACCTCTGAGCTCGAATTAGTCTGCCGTCTTTCAGGGCTTCATC
GACAGTCTGACGACCCTGGGGCGTTGATCACCCGAGTAGCACGGCAATACAGAAAGCGGACATCTGCCGGATGTTCG
GCATGATTTACCTTCTGGCGGTTTCCATtGTGGCGCAATACGTGGAATCTTTCGCCAATCTTCCTCGTAAAGACTTC
AGCGCTACGGACCCAGCGGTTGCTCTTATTAAACCCTTCAGACTTCACAGCTTCATCAGTACGACAGATTTCAGGAACTC
TTTTGCCAGCTCTTGTTCGACTGGCGGCTTAATACCTGCCCTCAGCAGCCCAACGAACGGTTTGGATGGTTGACCCCT
TGAAGTTCGGCAGTACCCTTACACCAATAATTCACCTTGTGGTGTGATGTTGGACCATGCCACGGCCGGTGGATGGTC
ATCGCTGTTTCGCCCTTATTAAAGGCAGCTTCGCGATGGAGTAATCGGTGCTGCAATGTGGACCATGCCACGGCCGGTGGTTCAG
GTCAACCAAGGATCAGACCCCTTTCGCCAGCTTCACAGCCACCTTAAATGTCTGACTTGCCTTAAATGTCGACTTGCCTTAAATCAG
ACTTGAACGATAACCCCGTACGAGCAATCAGCGCCAGGTGAAGTACGGTCTTCCAGGTTCTTGACAGTTGAAACATCAGCGCCGCTC
TTACCTTTCGCTTTCAGTCTTATCCAGCGCCGGATCTCTCCAGGTTTTGGCGGTTCCGACAGCAGATCITTTGTT
ATAAATCAGCGATAACGCTTCAACAGCGATCGGGTAAAGCAATCAGCTTCCGCTTGTAAACGTCAGGATCCCAAGGTAACG
GATACAGTTGTCTTGGAAACCGTTTGTCGGGTGATTTTCAGCCAAACAGCCAGATTGACCGTACGCCAACCAAGCGGTCCG
TGTGCCAAGAAGATAATGTACGGGCCATGCCAGTTGCCGCAACCTGTGGGAATTTCTCTCCAGTTTACCCGGATGCTC
AACGGTACTTTAAATTCGGTATCCTTCTCGAATTTCTACCAGCTTCAGCGGACCTTATAGCTTTTATCAGCCCTTATCAGCCGTTAA
TCCAGATACCACTTACCCTTTCGATTCATgTATATATCTCCCTTCTAAAGTTAAACAAAATATTCTTAGAGGGGA
ATTGTTATCCGCTCACAAATCCCTTATAGTAGTGTATTAATTCGCCGGTACGATCTCGATCTTACGCCGGACG
CATCGTCCCGGTCATCAGCGCTTGTTCGGCGTGGTGTGGCGCTAYATGCCCGCATCACCGATGGGAAAGATCGGG
CTCGCCACTTCGGCTCATGAGCGCTTGTTCGGCGTGGTGTGGCGCTAYATGCCCGCATCACCGATGGGAAAGATCGGG
ATCTCCTTGCATGCACCATTCCCTTGCAGCGCTGCTCAACGGCTCACCTTACCTACTAGTGTGGCTTCCCTTAAATGCAGGA
GTCGCATAGGGGAGCGTGCAGATCCCGGACACCATCGAATGGCGCAAAACCTTTCGCGGTATGGCATGATAGCGCCCG
GAAGAGATCAATTCAGGTTGGTGAATGTAAACAGTAAACGTTATACGATGTCCGAGATGTGCCGATGTCCTTATCA
GACCGTTTCCCGGTTGTTGAACCCAGCCAGCTTTCGCGAAAACCGGGAAGTGAAGCGGCGATGGCGGAGC
TGAATTACATTTCCCAACCGCTGGCACAAACACTGGCGGCAACAGTGTGTGATTGGCGTTGCCACCTCCAGTCTG
GCCCTGCACGGCGCTGCAAAATTGTCCGGCGGATTAATCTCCGCGGATCAACTGGGTGCCAGCGTGTGTCGAT
GGTAGAACGAAGCGCGCTCGAAGCCTGTAAGCGGCGGTGCACAATCTTTCGCGCAACGCGTCAAGTGGGCTGATCATTA

Fig. 9A

ACTATCCGCTGGATGACCAGGATGCCATTGCTGTGGAAGCTGCCTGCACATAATGTTCCGGCGGTTATTTCTTGATGTCTCT
GACCAGACACCCATCAACAGATATTTTCTCCCATGAAGACGGTACCGACTGGCGGTGGAGCATCTGGTCGCAATGGG
TCACCAGCAATCGCGTGTAGCGGCCCATPAAGTTCTGTCTGGCGGTCTGGCTGGCTGGCAATAAATATC
TCACTCGCAATCAATTCAGCCGATAGCGGAACGGGAAGCGGACTGGAGTGCCATGTCCGGTTTCAACAAACCATGCAA
ATGCTGAATGAGGGCATCGTCCCACTGCATGCTGTTGCCAACGATCAGATGGCGCTGGCGCAATGGCGCCATATAC
CGAGTCCGGGCTGGCGGTGGTGGGATATCTCGGTAGTGGGATACGACGATACCGAAGACAGTCAATGTTATATCCCGC
CGTTAACCAACAGGATTTTCGCTGTGGGCAACCCAGGTGGACCGCTTGTGCAACTCTCTCAGGGCCAG
GGGTGAAGGGCAATCAGCTGTTGCCCGTCTCACTGTTGAAAGAAACCCACCTGGCGCCCAATACGCAAAACCGCCTC
TCCCGCGGTTGGCCGATTCAATTAATGCAGCTGGCACGACAGGTTTCCCGACTGAAAGCGGGCAGTGAAGCAACGCA
ATTAATGTAAGTTAGCTCACTCATTAGGCACCGGATCTCGACCGATGCCCTTGAGAGCCTTCAACCCAGTCAGTCCCT
CCGGTGGCGCGGGCATGACTATCGTCCCGCACTTATGACTGTCTTTTATCATGCAACTCGTAGGACAGGTGCCCGG
CAGCGCTCTGGGTCAATTTCCGGCAGGACCGCTTTCGCTGGAGCGGACGATGATCGGCTGTCCGTTGCGGTTATTCGGA
ATCTTGCACGCCCTCGTCAAGCCTTCGTCACCTGGTCCCGCCACCAACGTTTCGGCGAGAAAGCAGGCCATATCGCCCG
CATGGCGCCCCACGGGTGGCATGATCGTGTCTCTGTGTTGAGGACCCGGCTAGGCTGGCGGGTTGCCCTTACTGGTT
AGCAGAAATGAATCACCGATACCGGAGCGAACGTGAAGCGACTGTGCTGCAAAACGTCGTGCGACCTGAGCAACACATGA
ATGGTCTTCGGTTCCGTGTTTCGTAAGTCTGAAACCGGAAAGTCAGCGCCCTGCACCAATATGTTCCGGATCTGCAT
CGCAGGATGCTGTGGTACCCCTGTGAAACACCTACATCTGTATTAACGAAGCGCTGGCATTGACCCCTGAGTGAATTTTC
TCTGGTCCCGCCGATCCATACCGCCAGTTGTTTACCCTCACAACTCCAGTAAACCGGCAATGTTCAATCAGTAAACC
CGTATCGTGAGCATCCTCTCTCGTTTCAATCGGTATCATACCCCAATGAAACAGAAATCCCTTACCGGAGGCATCAGT
GACCAAACAGGAAACCGCCCTTAAACATGGCCCGCTTATCAGAAGCCAGACATTAAGCCTTCTGGAGAAACTCAACG
AGCTGGACGCGGATGAACAGGCAGACATCTGTGAATCGCTTACGACCCAGCTGATGAGCTTACCGCAGCTGCCCTCGCG
CGTTTCGGTGTGACGGTGAACCTCTGACACATGCAGCTCCGGGAGCGGTACAGCTTGTCTGTAGCCGATGCCGATA
GAGCAGACAAGCCGTCAGGGCGGTGTCAGCGGGTGTGGCGGGTGTGGGGCGCAGCCATGACCCAGTCAAGTACCGGATA
GGGAGTGTACTGGCTTAACTATGGGCAATCAGAGCAGATGTAAGTGAAGTGCACCAATATATGCGGTGTGAATACC
GCACAGATGCGTAAGGAGAAATACCGCAACAGCGCTCTTCCGTTCTCGCTCACTGACTCGCTGGCTCGGTCGGTCCGTTT
GGTCCGGCAGCGGTATCAGCTCACTCAAAGGCGGTAATACGGTTATCCACAGAAATCAGGGGATAACGCAAGAAAGAAC
ATGTGAGCAAAAGGCCAGCAAAAGGCCAGGAAACCGTAAAGGCGGTTGCTGGCGTTTTCATAGGCTCCGCCCCC
TGACGAGCATCACAAAAATCGACGCTCAAGTCAGAGGTGGCGAAACCCGACAGGACTATAAAGATAACAGCGGTTTCCCC
CTGGAAGCTCCCTCGTGGCTCTCCTGTTCCGACCTTCCCGTTACCGGATACCTGTCCGCTTCTCCCTTCGGGAAGC
GTGGCGCTTCTCATPAGTCAACGCTGTAGGATCTCAGTTCGGTGTAGGTCGTTCCGTCACAGCTGGCTGTGTGCACGA
ACCCCCCTTCAGCCCGACCGCTGGCCCTTATCCGGTAACTATCGTCCAAACCCCGGTAAGACACGACTTATCGC

Fig. 9A (continued)

CAC TGG CAG CAG CCA C TGG TAA CAG GAT TAG CAG CAG CAG GAT GTAG GCG GTG TAC AGA GTTCTTGAAGTGGTGGCCCT
AACTACGGCTACACTAGAAAGGACAGTATTTGGTATCTGCGCTCTGCTGAAGCCAGTTACCTTCGGAAAAAGAGTTGGTAG
CTCTTGATCCGGCAACAACCCAGCTGGTAGCGGTGGTTTTTTTGTGTTGCAAGCAGCAGATTACGGCCAGAAAAAAG
GATCTCAAGAAGATCCCTTGATCTTTTCTACGGGGTCTGACGCTCAGTGGAAACGAAACTCACGTTAAGGGATTTTGGTC
ATGAACAATAAAACTGTCTGCTTACATAAACAGTAATACAAGGGGTGTTATGAGCCATAATTCAACGGGAAACGTCCTTGCT
CTAGCCCGGATTAATTTCCAACATGGATGCTGATTTATAATGGGTATAAATGGCTCGCGATAATGTCCGGCAATCAGGT
GCGACAATCTATCGATTTGATGGGAAGCCCGAATGCGCCAGAGTTGTTCTGAACAATGGCAAGGTAGCGTTGCCAATGA
TGTTACAGATGAGATGGTCAGACTAAACTGGCTGACGGAAATTTATGSCCTCTTCCGACCATCAAGCATTTTATCCGTACTC
CTGATGATGCAATGGTTACTCACCCTGCGATCCCGGGAAACAGCATTTCCAGGTATTAGAAGAAATATCCTGATTCAGGT
GAAAAATATTGTTGATGCGCTGGCAGTGTTCCTGCGCCGGTGCATTCGATTCCTGTTTGTAAATTTGTCTTTTAAACAGCGA
TCGCGTATTTTCGTCCTCGCTCAGCGCAATCACGAATGAATAACGGTTTGGTTGATGCGAGTGATTTTGATGACGAGCGGA
ATGGCTGGCCCTGTTGAACAAGTCTGGAAAGAAATGCATAAACTTTTGCCATTTCTACCCGGATTCAGTCGTCACCTCATGGT
GATTTCTCACTTGATAACCTTATTTTGGACGAGGGAAATTAATAGGTTGATTTGATGTTGGACGAGTCGGAAATCGCAGA
CCGATACCAGGATCTTGCCATCCCTATGGAACTGCCCTCGGTGAGTTTCTCCTTCAATACAGAAACGGCTTTTTCAAAAAT
ATGGTATTGATAATCCTGATAATGAATAAATGTCAGTTTCATTTGATGCTCGATGAGTTTTCCTAAGAATTAATTCATGAG
CGGATACATAATTTGAATGATTTAGAAAAATAAACAAATAGGGTTCCCGGCACATTTCCCGAAAAAGTCCACCTGAAA
TTGTAAACGTTAATATTGTTAAAAATTCGGGTTAAATTTTGTAAATCAGCTCATTTTAAACCAATAGGCCGAAATC
GGCAAAATCCCTTATAAATCAAAAGATAGACCCGAGATAGGTTGAGTGTGTTCCAGTTTGAACAAGAGTCCACTATT
AAAGAACGTGGACTCCAAACGTCAAAGGGCGAAAAACCGTCTATCAGGGCGATGGCCCACTACGTGAACCATCACCCCTAAT
CAAGTTTTTTGGGGTCGAGGTGCCGTAAGCACTAAATCGGAACCCCTAAAGGGAGCCCCCGATTAGAGCTTGACGGGGA
AAGCCGGCAACGTGGCGAGAAAGGAAGCGAAAGGAGCGGGCTAGGGCGCTGGCAAGTGTAGCGGGTAC
GCTGCGCGTAACCAACACCCCGCCGCTTAATGCGCCGCTACAGGGCGCGTCCCATTCGCCA

Fig. 9A (continued)

(SEQ ID No.:41)

MGIEGKLVINGDKYNGLAEVGKKFEKDTGIKVTVEHPDKLEEKFPQVAATGDGPDIFWAHDRFGGYAQSGLLAEI
TPDKAFQDKLYPFTWDVRYNGKLIAYPIAVEALS LIYNKDLLPNPPKTWEEIPALDKELKAKGKSALMENLQEPYFTWP
LIAADGGYAFKYENGYDIKDVGVNDNAGAKAGLTFVLVDLIKKNKHMNADTDYSIAEAAFNKGETAMTINGPWAWNSNIDTSK
VNYGVTVLP^TTFKGQPSKPFVGLSAGINAASPNKELAKEFLENYLLTDEGLEAVNKDKPLGAVALKSYEEEELAKDPRIAA
TMENAQKGEIMPNI PQMSAFWYAVRTAVINAASGRQTVDEALKDAQTNSSSGSGSGMDEKTTGWRGGHVVEGLAGELEQ
LRARLEHHPOGQREPGSGHHHHHEF

Fig. 9B

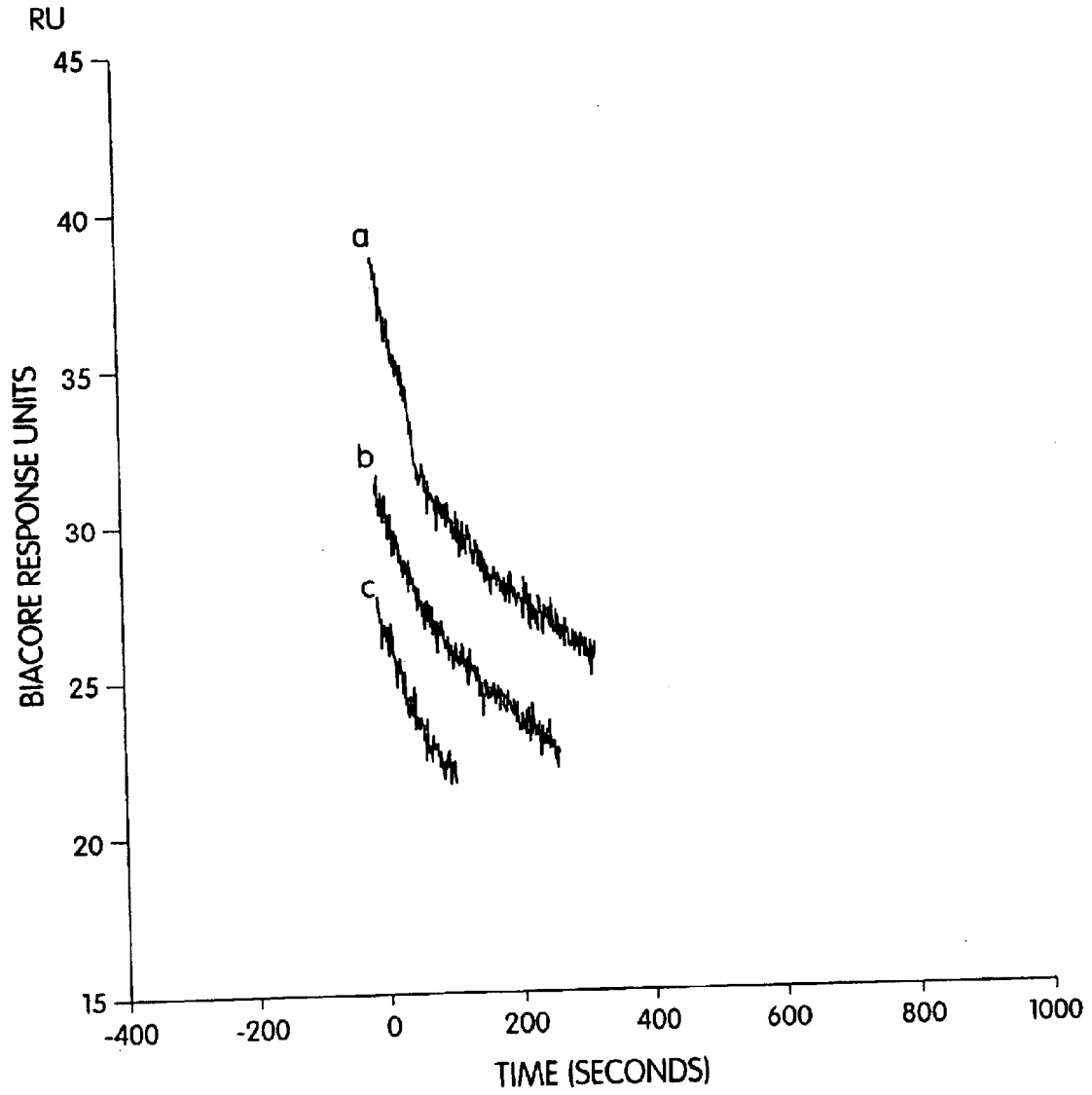


Fig. 10A

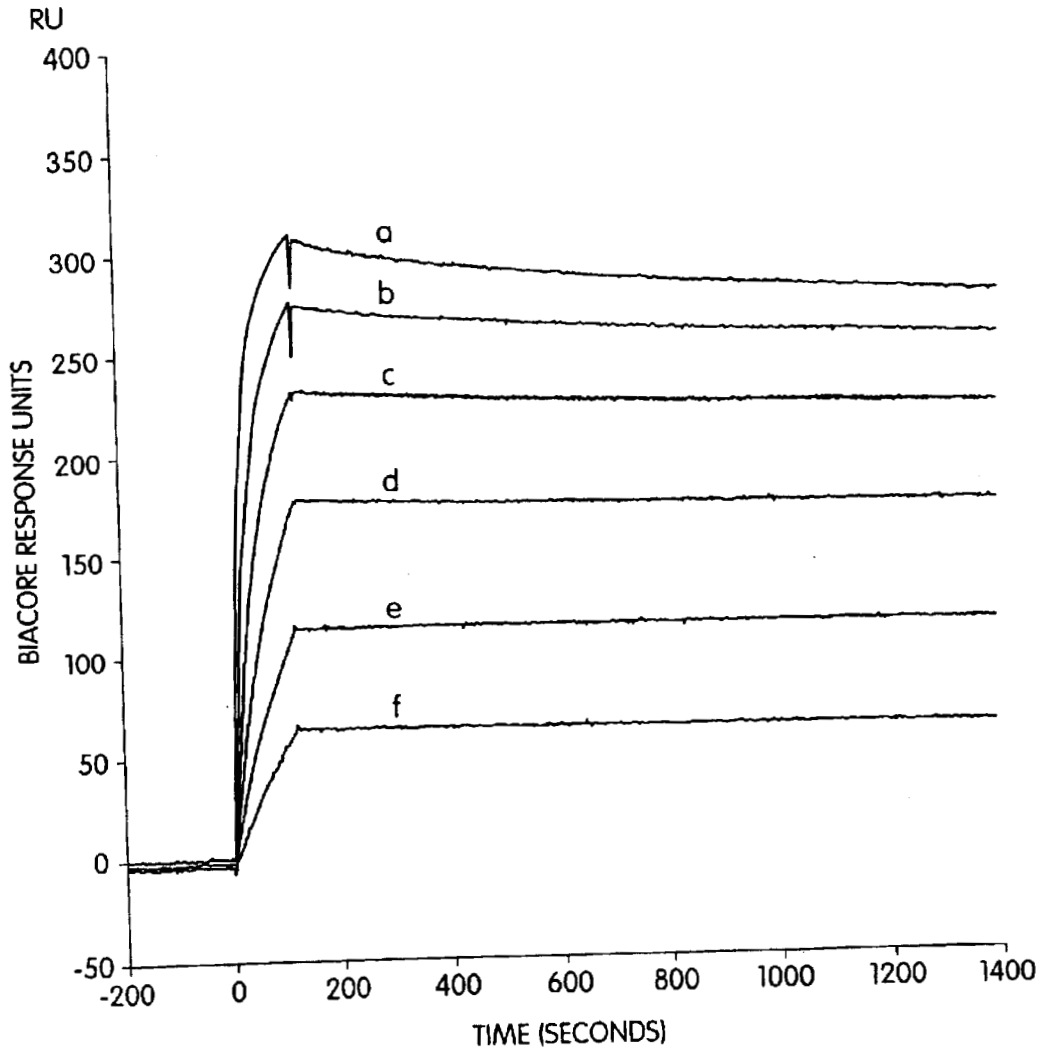


Fig. 10B

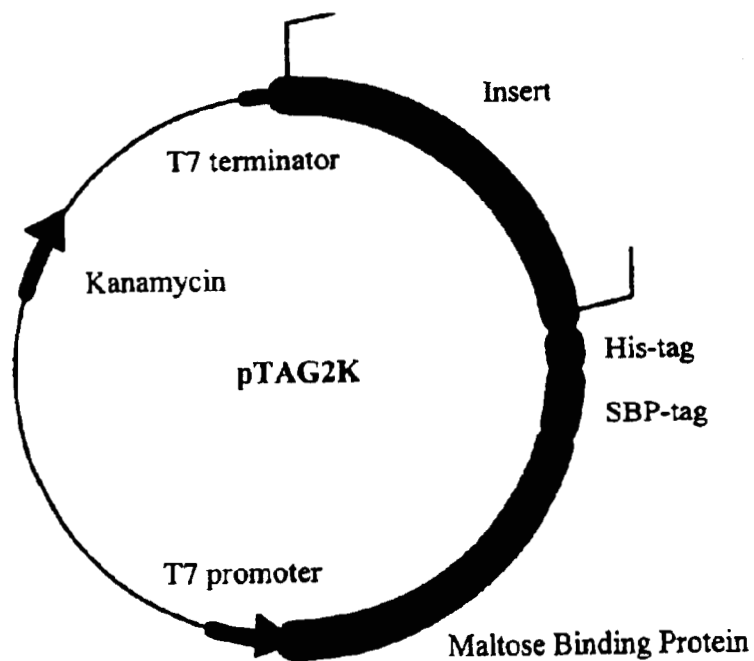


Fig. 11

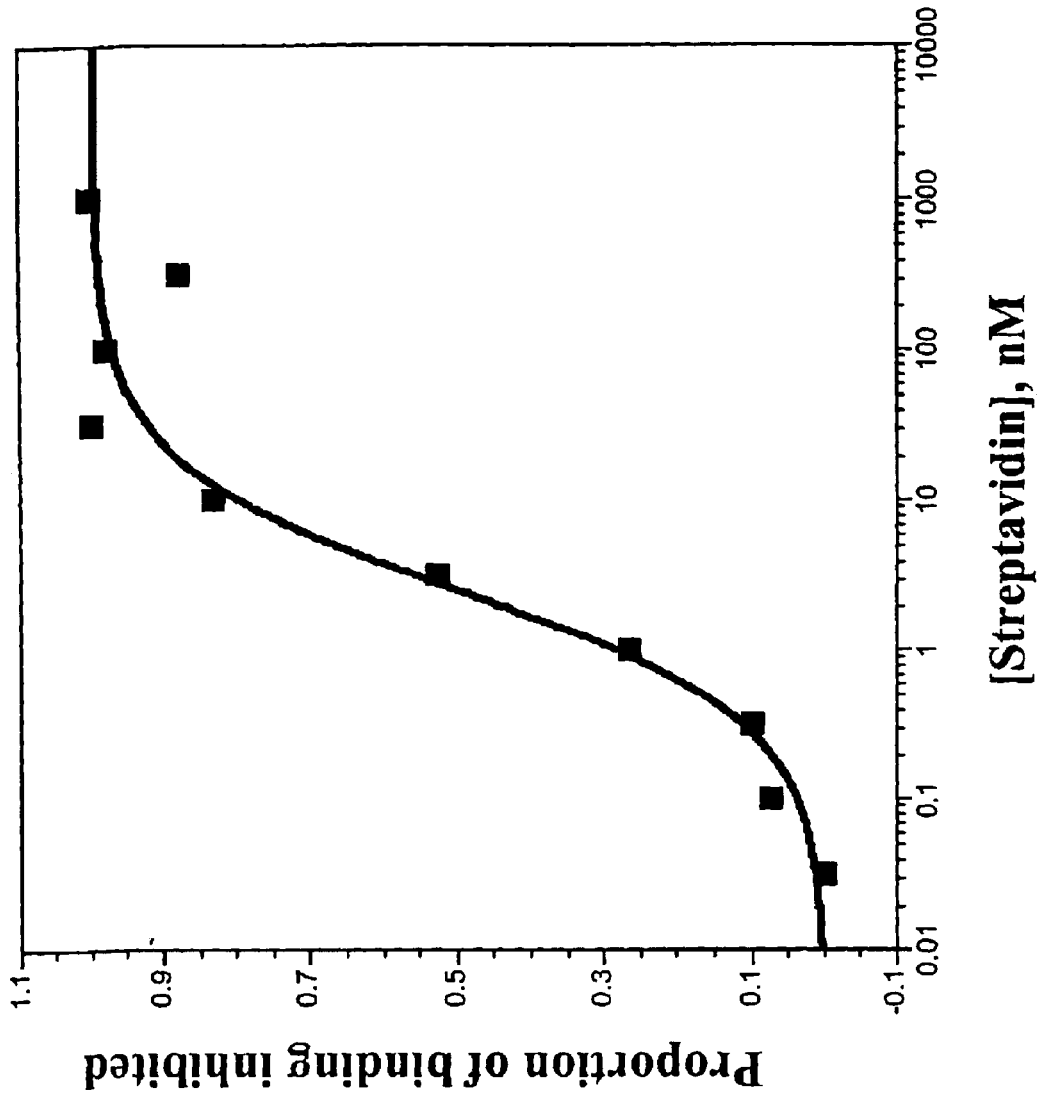


Fig. 12

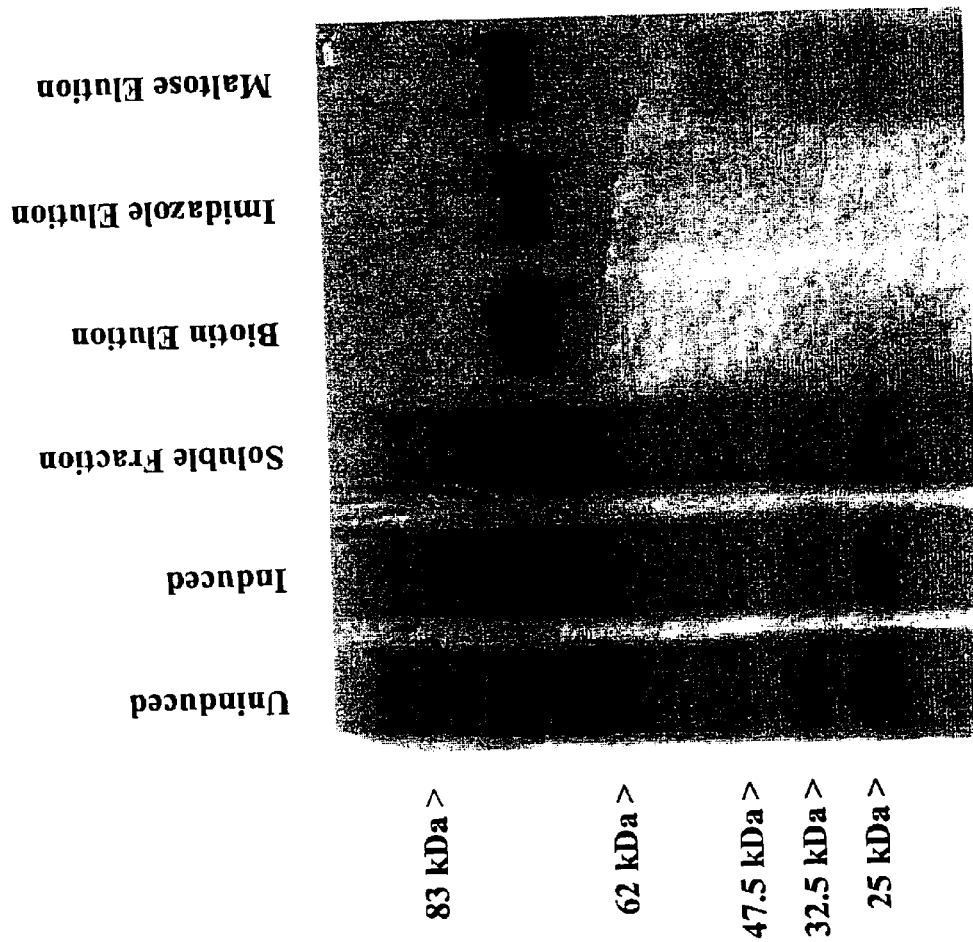
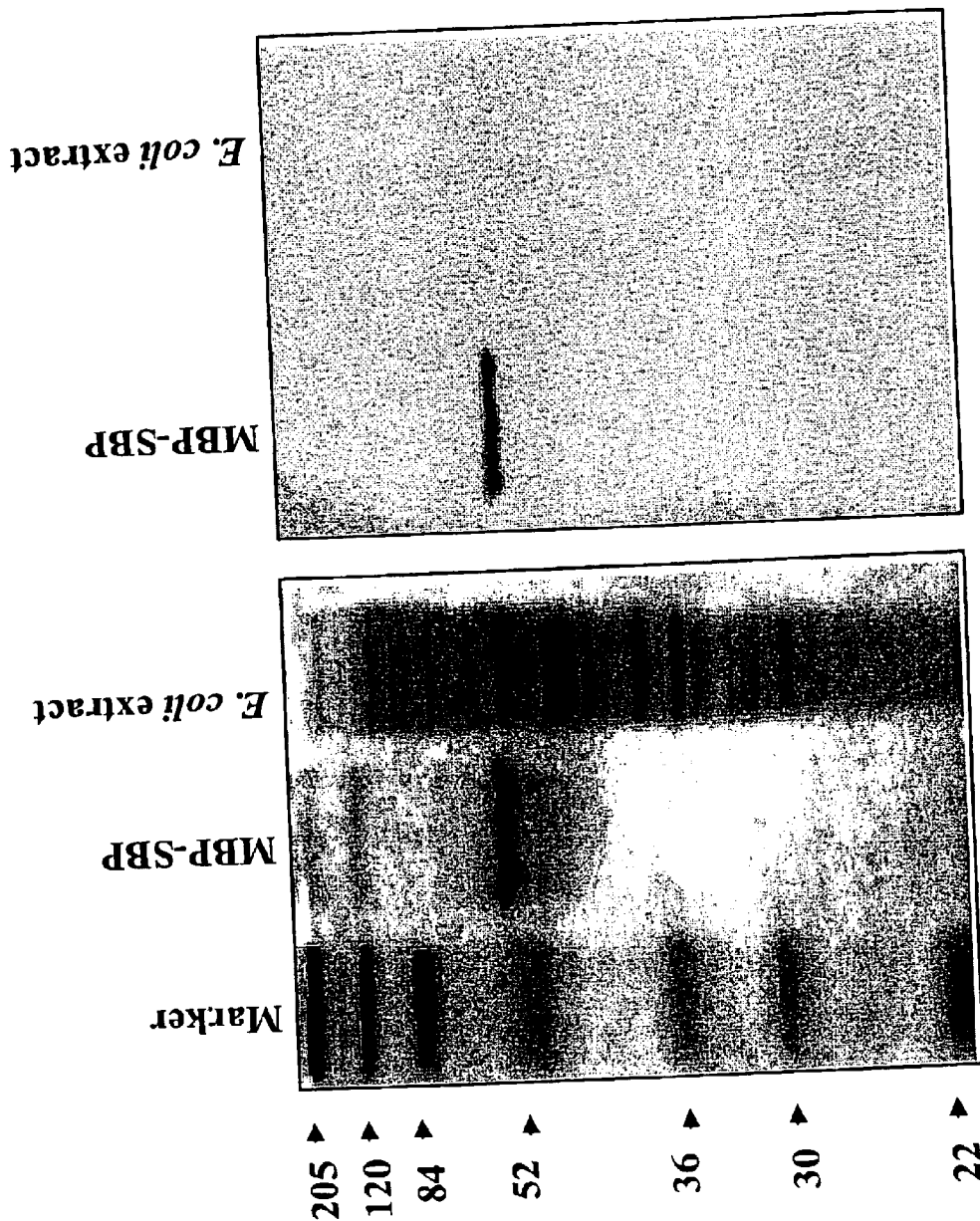


Fig. 13



Blot developed with SA-HRP

Total protein stain

Fig. 14

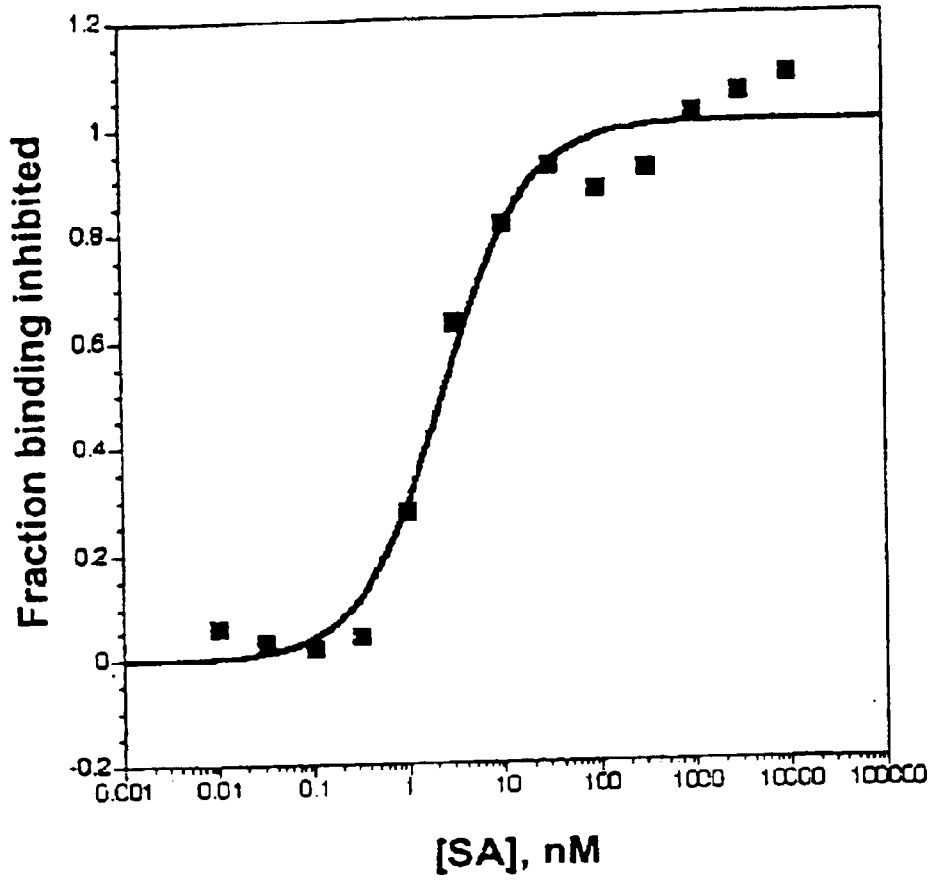


Fig. 15

STREPTAVIDIN-BINDING PEPTIDES AND USES THEREOF

CROSS-REFERENCE TO RELATED APPLICATIONS

This application claims benefit from U.S. Provisional application Ser. No. 60/244,541, filed Oct. 31, 2000, hereby incorporated by reference.

STATEMENT AS TO FEDERALLY SPONSORED RESEARCH

This invention was funded by grant number R01GM53936 from the National Institutes of Health and grant number NCC-2-1069 from NASA. The government may have certain rights in the invention.

BACKGROUND OF THE INVENTION

In general, the invention features novel compounds and methods for purifying or detecting proteins of interest.

Determining the enzymatic activity, binding specificity, or three-dimensional structure of a protein often requires the purification of the protein from a complex mixture of other components, such as compounds present in a cell lysate or in vitro translation extract. With the number of known proteins increasing dramatically as a result of whole genome sequencing projects, it has become crucial to find alternatives to traditional, time-consuming monoclonal antibody production for generating affinity reagents for the detection and purification of proteins. In addition, purifying a novel protein using traditional column chromatography methods often requires much trial and error to develop a purification protocol that results in the recovery of the protein in high yield and purity.

Thus, purification methods are needed that may be generally applied to proteins of interest, that utilize inexpensive reagents, and that result in highly purified protein without requiring multiple chromatography steps.

SUMMARY OF THE INVENTION

The purpose of the present invention is to provide improved reagents for the purification, detection, or quantitation of proteins of interest. In particular, the high affinity, streptavidin-binding peptides of the present invention may be used as affinity tags for the purification of fusion proteins containing proteins of interest.

Accordingly, in a first aspect, the invention provides a peptide which binds streptavidin with a dissociation constant less than $10 \mu\text{M}$ (that is, binds streptavidin more tightly than a K_D of $10 \mu\text{M}$) and which is not disulfide bonded or cyclized. Preferably, the dissociation constant is equal to or less than $5 \mu\text{M}$, $1 \mu\text{M}$, 100 nM , 50 nM , 25 nM , 10 nM , or even 5 nM . In one preferred embodiment, the dissociation constant is less than $10 \mu\text{M}$, $5 \mu\text{M}$, $1 \mu\text{M}$, 100 nM , 50 nM , or 25 nM ; and greater than 0.01 nM , 0.1 nM , 1 nM , 5 nM , or 10 nM . In another preferred embodiment, the value of the dissociation constant is contained in one of the following ranges: $5 \mu\text{M}$ to $1 \mu\text{M}$, $1 \mu\text{M}$ to 100 nM , 100 nM to 50 nM , 50 nM to 25 nM , 25 nM to 10 nM , 10 nM to 5 nM , 5 nM to 1 nM , or 5 nM to 0.1 nM , inclusive.

In a related aspect, the invention provides a peptide which binds streptavidin with a dissociation constant less than $10 \mu\text{M}$. The amino acid sequence of the peptide does not contain an HPQ, HPM, HPN, or HQP motif. Preferably, the dissociation constant is equal to or less than $5 \mu\text{M}$, $1 \mu\text{M}$, 100 nM , 50 nM , 25 nM , 10 nM , or 5 nM . In one preferred

embodiment, the dissociation constant is less than $10 \mu\text{M}$, $5 \mu\text{M}$, $1 \mu\text{M}$, 100 nM , 50 nM , or 25 nM ; and greater than 0.01 nM , 0.1 nM , 1 nM , 5 nM , or 10 nM . In another preferred embodiment, the value of the dissociation constant is contained in one of the following ranges: $5 \mu\text{M}$ to $1 \mu\text{M}$, $1 \mu\text{M}$ to 100 nM , 100 nM to 50 nM , 50 nM to 25 nM , 25 nM to 10 nM , 10 nM to 5 nM , 5 nM to 1 nM , or 5 nM to 0.1 nM , inclusive.

In another related aspect, the invention provides a peptide which binds streptavidin with a dissociation constant less than 23 nM , 10 nM , or 5 nM . In one preferred embodiment, the peptide is disulfide bonded or cyclized. In another preferred embodiment, the dissociation constant is less than 23 nM , 10 nM , or 5 nM ; and greater than 0.01 nM , 0.1 nM , or 1 nM . In another preferred embodiment, the value of the dissociation constant is contained in one of the following ranges: 20 nM to 10 nM , 10 nM to 5 nM , 5 nM to 1 nM , or 5 nM to 0.1 nM , inclusive.

In other related aspects, the invention provides nucleic acids encoding the peptides of the present invention, and vectors that include such nucleic acids.

In addition, standard gene fusion techniques may be used to generate fusion nucleic acids that encode fusion proteins which include a peptide of the present invention and a protein of interest. The fusion proteins may be purified, detected, or quantified based on the high affinity of the peptides for streptavidin.

Accordingly, in one such aspect, the invention provides a fusion protein including a protein of interest covalently linked to one of the following peptides: (a) a peptide which binds streptavidin with a dissociation constant less than $10 \mu\text{M}$ and which is not disulfide bonded or cyclized, (b) a peptide which binds streptavidin with a dissociation constant less than $10 \mu\text{M}$ and which does not contain an HPQ, HPM, HPN, or HQP motif, or (c) a peptide which binds streptavidin with a dissociation constant less than 23 nM . In preferred embodiments, the peptide is attached to the amino-terminus or the carboxy-terminus of the protein of interest, or the peptide is positioned between the amino and carboxy-termini of the protein of interest. Preferably, the peptide is linked to the protein of interest by a linker which includes a protease-sensitive site.

In related aspects, the invention provides nucleic acids encoding the fusion proteins of the present invention, and vectors that include these fusion nucleic acids.

In addition, the invention provides a method of producing a fusion protein of the present invention. This method includes transfecting a vector having a nucleic acid sequence encoding the fusion protein into a suitable host cell and culturing the host cell under conditions appropriate for expression of the fusion protein.

The fusion proteins described herein may be used in methods for purifying proteins of interest from samples. Such a method involves expressing the protein of interest as a fusion protein covalently linked to one of the following peptides: (a) a peptide which binds streptavidin with a dissociation constant less than $10 \mu\text{M}$ and which is not disulfide bonded or cyclized, (b) a peptide which binds streptavidin with a dissociation constant less than $10 \mu\text{M}$ and which does not contain an HPQ, HPM, HPN, or HQP motif, or (c) a peptide which binds streptavidin with a dissociation constant less than 23 nM . A sample containing the fusion protein is contacted with streptavidin under conditions that allow complex formation between the fusion protein and streptavidin. The complex is isolated, and the fusion protein is recovered from the complex, thereby purifying the protein

of interest from the sample. In one preferred embodiment, the protein of interest is recovered from the fusion protein by cleaving the streptavidin-binding peptide from the fusion protein.

In yet another aspect, the invention provides a method of detecting the presence of a fusion protein of the present invention in a sample. This method includes (a) contacting the sample with streptavidin or a streptavidin-containing compound under conditions that allow complex formation between the fusion protein and either streptavidin or the streptavidin-containing compound; (b) isolating the complex, and (c) detecting the presence of streptavidin or the streptavidin-containing compound in the complex or following recovery from the complex. The presence of streptavidin or the streptavidin-containing compound indicates the presence of the fusion protein in the sample. Preferably, step (c) also involves measuring the amount of streptavidin or the streptavidin-containing compound in the complex or following recovery from the complex. The amount of fusion protein in the sample is correlated with, and may be calculated from, the measured amount of streptavidin. For example, for a fusion protein containing a peptide that binds one molecule of streptavidin per molecule of peptide, the amount of fusion protein in the sample is predicted to be approximately the same as the amount of streptavidin measured. In one preferred embodiment, the amount of streptavidin is determined using Western or ELISA analysis with an antibody that reacts with streptavidin or that reacts with a compound that is covalently linked to streptavidin. In another preferred embodiment, streptavidin is covalently linked to an enzyme, radiolabel, fluorescent label, or other detectable group, and the amount of streptavidin is determined using standard techniques based on a characteristic of the detectable group such as its enzyme activity, radioactivity, or fluorescence.

In another aspect, the invention features a method of determining the affinity of a compound of interest for a target molecule. The method includes incubating a solution having a compound of interest with a detectable group and a free target molecule under conditions that allow complex formation between the compound of interest and the free target molecule. The solution is contacted with a target molecule immobilized on a solid support under conditions that allow complex formation between the compound of interest and the immobilized target molecule, and the compound of interest bound to the immobilized target molecule is then separated from the compound of interest not bound to the immobilized target molecule. To determine the affinity, either the amount of the compound of interest that is bound to the immobilized target or the amount of the compound of interest not bound to the target molecule is then measured. In yet another preferred embodiment, the steps of this method are repeated one or more times with a different concentration of free target molecule. In other preferred embodiments, both the amount of the compound of interest bound to the immobilized target molecule and the amount of the compound of interest not bound to the immobilized target molecule are measured. In another embodiment, only the amount of the compound of interest that is not bound to the immobilized target molecule is measured. In another embodiment, the target is immobilized on a solid support such as a microtiter plate, a bead, or the matrix of a spin-filter column. In another embodiment, the compound of interest that is bound to the immobilized target molecule is separated from the compound of interest that is not bound to the immobilized target molecule by centrifugation, for example, by spin-filtration or ultracentrifugation.

In still other preferred embodiments, the target is a small molecule such as streptavidin, a streptavidin fusion protein, streptavidin covalently bound to an enzyme (e.g. horseradish peroxidase or alkaline phosphatase), or a ligand. The compound of interest may be a peptide that binds streptavidin, or may be a fusion protein that includes a peptide that binds streptavidin and a protein of interest. In other embodiments, the compound of interest may be labeled with a detectable group, such as a radiolabel, a fluorescent molecule, or an enzyme.

In preferred embodiments of various aspects of the invention, the amino acid sequence of the peptide includes at least 10, 25, 50, 75, or 100 consecutive amino acids or consists of between 5 and 150, 10 and 100, 20 and 75, or 30 and 50 amino acids, inclusive, of any one of SEQ ID Nos. 1–29 or 35. Preferably, the amino acid sequence of the peptides includes an LPQ, QPQ, EPQ, HPA, HPD, or HPL motif. In other preferred embodiments, the amino acid sequence includes any one of SEQ ID Nos. 1–29 or 35. In still other preferred embodiments, the peptide has an amino acid sequence that is at least 20, 30, 40, 50, 60, 70, 80, 90, 95, or 100% identical to any one of SEQ ID Nos. 1–29 or 35.

It is also contemplated that the affinity of the peptides of the present invention for streptavidin may be increased by incorporating disulfide bonds into, or cyclizing, the peptides. By constraining the peptides, the amount of disorder inherent in the peptides (i.e., entropy) decreases, and thus binding of these peptides to streptavidin may require less energy. It is also contemplated that the three-dimensional structure of peptides of the invention bound to streptavidin may be experimentally determined or modeled based on the known crystal structure of streptavidin and used to determine possible modifications to the peptides that may further improve their affinity for streptavidin.

As used herein, by “nucleic acid” is meant a sequence of two or more covalently bonded naturally-occurring or modified deoxyribonucleotides or ribonucleotides.

By “peptide” is meant a sequence of two or more covalently bonded naturally-occurring or modified amino acids. The terms “peptide” and “protein” are used interchangeably herein.

By “covalently linked” is meant covalently bonded or connected through a series of covalent bonds. A group that is covalently linked to a protein may be attached to the amino-terminus, carboxy-terminus, between the amino- and carboxy-termini, or to a side chain of an amino acid in the protein.

By “streptavidin” is meant any streptavidin molecule or fragment thereof or any protein that has an amino acid sequence that is at least 80, 90, 95, or 100% identical to a streptavidin molecule or fragment thereof (see, for example, Haeuptle et al. *J. Biol. Chem.* 258: 305, 1983). A preferred fragment of streptavidin is “core” streptavidin, which is a proteolytic cleavage product of streptavidin (Bayer et al. *Biochem. J.* 259,369–376, 1989). Preferably, a streptavidin molecule or fragment thereof is capable of binding biotin or any other streptavidin-binding molecule. Streptavidin or a streptavidin fragment may be modified chemically or through gene fusion technology or protein synthesis so that it is covalently linked to an enzyme, radiolabel, fluorescent label, or other detectable group. These detectable groups may be used to determine the presence or location of a streptavidin-bound fusion protein in a cell or sample or to quantify the amount of a streptavidin-bound fusion protein, using standard methods.

By a “streptavidin-containing compound” is meant any compound that includes streptavidin covalently bound to

another molecule. These compounds may, for example, be conjugated to streptavidin through gene fusion technology or protein synthesis and may, for example, be covalently linked to an enzyme, such as horseradish peroxidase or alkaline phosphatase, a fluorescent group, a radiolabel, or any other detectable group.

By “free target molecule” is meant a target molecule that is not bound to a solid support.

By “cyclized” is meant nonlinear. A peptide may be cyclized by the formation of a covalent bond between the N-terminal amino group of the peptide or the side-chain of a residue and the C-terminal carboxyl group or the side-chain of a residue. For example, a peptide lactam may be formed by the cyclization between the N-terminal amino group or an amino group of an amino acid side-chain and the C-terminal carboxyl group or a carboxyl or amide containing side-chain. Other possible cyclizations include the formation of a thioether by the reaction of a thiol group in a cysteine side-chain with the N-terminal amino group, C-terminal carboxyl group, or the side-chain of another amino acid. A disulfide bond may also be formed between two cysteine residues. As used herein, a “non-cyclized peptide” is a linear peptide that does not have any of the above cyclizations.

By “dissociation constant” is meant the dissociation constant for binding streptavidin as measured using the electrophoretic mobility shift assay described herein. By “less than” a particular dissociation constant is meant capable of binding streptavidin more tightly than the strength of binding represented by a particular dissociation constant.

By “purifying” is meant separating a compound, for example, a protein, from other components that naturally accompany it. Typically, a protein is substantially pure when it is at least 50%, by weight, free from proteins and naturally-occurring organic molecules with which it is naturally associated. Preferably, the protein is at least 75%, more preferably, at least 90%, and most preferably, at least 99%, by weight, pure. In other preferred embodiments, the protein is at least 2, 5, 10, 25, 50, or 100 times as pure as the starting material. Purity may be assayed by any appropriate method, such as polyacrylamide gel electrophoresis, column chromatography, optical density, HPLC analysis, western analysis, or ELISA (see, for example, Ausubel et al., Current Protocols in Molecular Biology, John Wiley & Sons, New York, 2000).

By “recovered from the complex” is meant physically separated from the complex of streptavidin and the fusion protein. For example the streptavidin-bound fusion protein may be incubated under conditions that reduce the affinity of the fusion protein for streptavidin (i.e., at low or high salt concentrations or at low or high pH values) or incubated in the presence of molecules that compete with the fusion protein for binding streptavidin. Preferably, either the fusion protein or the streptavidin that has been released from the complex is isolated using standard procedures, such as column chromatography, polyacrylamide gel electrophoresis, HPLC, or western analysis.

The present invention provides a number of advantages related to the detection and purification of proteins of interest. For example, because the present methods do not require the generation of an antibody or other affinity reagent that is specific for each protein of interest, these methods may be universally applied to any protein. In addition, if desired, the streptavidin-binding peptide may be connected to the protein of interest through a protease cleavable linker, allowing removal of the peptide after purification of the fusion protein.

Using the methods described herein, purification of a fusion protein based on its affinity for streptavidin has allowed the isolation of the fusion protein in significantly higher purity than that obtained using a hexahistidine affinity tag or maltose-binding protein affinity tag. Moreover, streptavidin is an inexpensive reagent that may be purchased unmodified or covalently labeled with a detectable group (such as FITC-streptavidin or alkaline phosphatase-conjugated streptavidin) or with a chromatography matrix (such as streptavidin-agarose). The availability of these reagents simplifies methods for detecting and purifying the fusion proteins of the present invention.

In addition, the streptavidin binding peptide-tag are particularly useful when intermediate amounts of protein (~10–500 μ g) need to be produced and purified in a high throughput manner. For example, highly parallel purification protocols may be performed in 96-well plates using streptavidin-derivatized magnetic beads and streptavidin binding peptide -tagged proteins expressed in *E. coli* or in coupled in vitro transcription/translation reactions. This facilitates purification, for example, for proteomics applications in which thousands of purified proteins need to be generated and purified in parallel.

Other features and advantages of the invention will be apparent from the following detailed description and from the claims.

BRIEF DESCRIPTION OF THE DRAWINGS

FIG. 1A is a schematic illustration of an in vitro selection process according to the invention, showing the structure of the library and the selection scheme. Members of the DNA library have, from the 5' to 3' end, a T7 RNA polymerase promoter (T7), a tobacco mosaic virus translation enhancer (TMV), a start codon (ATG), 88 random amino acids, a hexahistidine tag (H6), and a 3' constant region (Const).

FIG. 1B is a picture of an SDS-PAGE gel of samples from the library at different stages of preparation. The first lane shows the result of translating the mRNA display template with ³⁵S-methionine. Most of the counts represent free peptide (free pep), but a significant amount of mRNA-peptide covalent fusions are also present (mRNA-pep). There is also another band that is independent of added template (NS, non-specific), and some counts remain in the gel well. The band corresponding to the mRNA-peptide can be shifted to a position slightly higher than that for the free peptide by the addition of RNase A. The remaining lanes show the result of successive oligo-dT and Ni-NTA purifications, and finally reverse transcription (RT).

FIG. 2A is a bar graph showing the fraction of ³⁵S counts from the displayed peptides that bound to streptavidin and eluted with biotin, at each round of selection. FIG. 2B is a graph showing the elution profile for the peptide library generated from the output of the seventh round of selection in FIG. 2A. The first fraction represents the flow-through. Biotin was added at the point indicated. The plot compares the binding of the intact, reverse-transcribed, displayed peptides (mRNA-pep), the same sample treated with RNase A, and the RNase-treated sample applied to a streptavidin column pre-saturated with biotin (excess biotin was washed away prior to exposing the library to the matrix).

FIG. 3 is a list of the sequences of 20 clones from the seventh round of selection (SEQ ID Nos.: 1–20). The “#” column indicates the number of times each sequence was observed. The HPQ sequence is in bold type. Non-random sequences at the termini are underlined. The six C-terminal-most residues are not shown.

FIG. 4A is a picture of a native gel showing an electrophoretic mobility shift (EMSA) analysis demonstrating the binding of four different DNA-tagged peptides to streptavidin. The migration of each clone is shown in the absence (-) and presence (+) of 1 μ M streptavidin. Some of the clones show multiple bands, presumably representing different conformations. The arrows show the position of the gel well, which often contains a fraction of the counts. FIG. 4B is a picture of a native gel showing the titration of the full-length clone SB19 with streptavidin. The streptavidin concentration in each lane, from left to right, is: 3.8, 6.6, 10, 15, 23, 35, and 61 nM. FIG. 4C is a curve fit of the data shown in FIG. 4B (the fraction of peptide bound could not be accurately determined for the point with the lowest concentration of streptavidin). Assuming that the peptide is homogeneous and 100% active, the data from this experiment give a K_D of 10 nM for the binding of peptide SB 19 to streptavidin.

FIG. 5 is a list of the sequences of truncation mutants of peptide SB19 (SEQ ID Nos.: 21-29). The full-length (FL), C-terminal deleted (C1-C4), N-terminal deleted (N1-N3), and point mutated (M1) peptide sequences are shown. The "% binding" refers to the performance of these peptides in the streptavidin column-binding assay.

FIG. 6A is the nucleotide sequence of the plasmid used for expression of a fusion protein containing a streptavidin-binding peptide (SEQ ID No.: 37). FIG. 6B is the amino acid sequence of the encoded protein (SEQ ID No.: 38) which contains, from the amino- to carboxy-terminus, maltose-binding protein, a streptavidin-binding peptide (SEQ ID No.: 35, FIG. 7A), a hexahistidine tag, and another peptide called 2r18-19dN. FIG. 6C is the amino acid sequence of 2r18-19dN (SEQ ID No.: 39).

FIG. 7A is the amino acid sequence of the streptavidin-binding peptide (SEQ ID No.: 35) used as an affinity tag for the purification of the fusion protein listed in FIG. 6B. This peptide contains the first 38 amino acids of the SB19-C4 peptide (FIG. 5). FIG. 7B is a picture of an SDS-PAGE gel showing the purity of the fusion protein after elution from the streptavidin column (lane 2) compared to the purity of the *E. coli* lysate that was applied to the column (lane 1).

FIGS. 8A-8F are schematic illustrations of the pre-selection method. FIG. 8A is an illustration of an mRNA display template terminating in puromycin in which the tobacco mosaic virus translation enhancer sequence (TMV), the initiating methionine codon (AUG), and the sections of the open reading frame encoding the two protein affinity tags (FLAG and His₆) are labeled. FIG. 8B is an illustration of an mRNA display template that is free of frameshifts and premature stop codons and thus encodes a full-length protein containing both affinity tags. FIG. 8C illustrates an mRNA display template that has initiated internally and displays the corresponding truncated protein lacking the N-terminal FLAG tag. FIG. 8D shows an mRNA display template that has a deletion in its open reading frame and thus displays the corresponding frameshifted protein lacking the C-terminal His₆ tag. FIG. 8E illustrates the reverse transcription of the mRNA display template from FIG. 8B that was purified based on the presence of both protein affinity tags in the encoded protein. FIG. 8F shows the cleavage sites for Type IIS restriction enzymes which are encoded in each cassette. Ligation of pre-selected cassettes which have been cleaved with these enzymes yields the full-length DNA library.

FIG. 9A is the polynucleotide sequence of the vector encoding a fusion protein containing maltose-binding protein, a streptavidin-binding peptide (SEQ ID No.: 35, FIG. 7A), and a hexahistidine tag. FIG. 9B is the amino acid

sequence of the encoded fusion protein. The sequence of the streptavidin-binding peptide which contains the first 38 amino acids of the SB19-C4 peptide is underlined.

FIG. 10A is a graph of the Biacore (Surface Plasmon Resonance) response units over various lengths of time for the dissociation of streptavidin from the fusion protein listed in FIG. 9B immobilized on a biacore chip. For line "a," the streptavidin concentration is 23 μ M; for line "b," the concentration is 11.5 μ M, and for line "c," the concentration is 5.75 μ M. This data was used to calculate an upper limit of 2×10^{-3} /s for the dissociation rate, K_D . FIG. 10B is a graph showing the association and subsequent dissociation of streptavidin from the immobilized fusion protein. For lines "a" through "f," the streptavidin concentrations are 1.6, 0.8, 0.4, 0.2, 0.1, and 0.05 μ M, respectively. This data was used to calculate an association rate, k_a , of 5×10^4 /M/s.

FIG. 11 is a map of the pTAG2K vector indicating the order of the domains in the multiply-tagged fusion protein it encodes.

FIG. 12 is a graph showing a K_D determination of the streptavidin binding peptides-streptavidin interaction using the Spin-filter Binding Inhibition Assay (SBIA). The labeled streptavidin binding peptide-tagged peptide was incubated with a range of streptavidin concentrations and the amount not complexed was then determined after a short incubation with immobilized streptavidin. This analysis gave a K_D of 2.5 nM for the interaction of the streptavidin binding peptide sequence with streptavidin.

FIG. 13 is a purity assay for a single-step purification of streptavidin binding peptide-tagged (multiply-tagged) protein from lysed cells. Purity is compared to samples processed upon the basis of the His-tag or the maltose-binding protein sequences contained in the same protein. Lanes 1 and 2 show lysed *E. coli* prior to and after IPTG-induction, respectively. Lane 3 shows the soluble fraction of *E. coli* lysate in streptavidin-binding buffer. Lanes 4 through 6 show approximately equal amounts of purified proteins from the elution fractions of the streptavidin binding peptide-tag purification, the His-tag purification, and the maltose-binding protein purification, respectively.

FIG. 14 illustrates a detection of a streptavidin binding peptide-tagged protein with streptavidin-derivatized horseradish peroxidase. The left-hand panel shows the Coomassie Brilliant Blue staining of an SDS-Tricine PAGE gel of the purified streptavidin binding peptide-tagged (multiply-tagged) protein and an *E. coli* extract. These same samples were also run on a different portion of the same gel and then transferred to a nitrocellulose membrane. The right-hand panel shows the result of the probing of this membrane with streptavidin-derivatized horseradish peroxidase. The only observed signal is for the streptavidin binding peptide-tagged protein, with no staining of other proteins in the extract.

FIG. 15 is a graph showing a K_D determination of a streptavidin binding peptide-streptavidin interaction. The y axis shows the fraction of surface-bound peptide that is competed by the free streptavidin. This analysis gave a K_D of 2.4 nM for the interaction of the streptavidin binding peptide sequence with streptavidin.

DETAILED DESCRIPTION

The present methods stem from the discovery of peptides that have unusually high affinities for streptavidin (K_D of less than 10 μ M). These peptides were selected from a library of randomized, non-constrained peptides using the mRNA display method. The high affinity of the selected

peptides was particularly surprising, given the fact that non-constrained linear peptide libraries generally do not yield high affinity ligands to proteins, except in cases where the protein normally functions in peptide recognition (Clackton et al., Trends Biotech 12:173-184 (1994); Katz, Annu. Rev. Biophys. Biomol. Struct. 26:27-45, 1997). Many other peptides with high affinity for streptavidin may be isolated using the mRNA display method or any other selection method, such as ribosome display (Roberts, Curr. Opin. Chem. Biol. 3(3):268-73, 1999), or phage display (U.S. Pat. No. 5,821,047).

The binding characteristics of exemplary selected streptavidin-binding peptides are described in Table 1, and the sequences of these peptides are listed in FIG. 3. The first column of Table 1 lists the peptide name (SB1-SB20). For comparison, a non-selected sequence with two HPQ motifs spaced by 19 residues (called "non-selected") is listed in row one. SB19-C4 is a truncation mutant of peptide SB19, described below. The peptides are grouped according to the number of HPQ and similar tripeptide motifs they possess. The second column shows the number of tripeptide motifs in each peptide, and the number of amino acid residues separating them. The third column represents the percentage of peptide binding and specifically eluting from a streptavidin column. This percentage ranged from 8.3% to as high as 88% for the selected peptides, compared to only 0.16% for the control, non-selected peptide with two HPQ motifs.

The fourth column shows the K_D , when known, for the interaction between streptavidin and the peptides, as measured in the EMSA assay described herein. The standard deviation in the K_D is shown in the fifth column, based on the number of independent measurements (n, shown in parentheses). The dissociation constant ranged from 110 nM for peptide SB5 to 4.8 nM for peptides SB2.

TABLE 1

Peptide	Structure	% binding and eluting	K_D (nM)	Standard deviation (n)
Non-selected	HPQ 19 HPQ	0.16		
	Two HPQ motifs			
SB1	HPQ 19 HPQ	86	50	5.7 (4)
SB2	HPQ 19 HPQ	48	4.8	0.91 (8)
SB3	HPQ 23 HPQ	20		
SB4	HPQ 43 HPQ	49		
SB5	HPQ 52 HPQ	72	110	22 (6)
	One HPQ and one similar tripeptide motif			
SB6	HPL 4 HPQ	49		
SB7	HPD 7 HPQ	28		
SB8	HPQ 12 HPL	27		
SB9	HPQ 12 HP	64		
SB10	HPQ 21 QPQ	15		
SB11	HPQ 28 HPA	68		
SB12	HPQ 30 EPQ	73		
SB13	HPQ 32 EPQ	64		
SB14	HPQ 43 HPL	11		
SB15	QPQ 50 HPQ	44	92	16 (4)
SB16	HPQ 74 LPQ	50		
	One HPQ motif			
SB17		8.3		
SB18		58		
SB19		85	10	1.8 (10)
SB19-C4		88	4.9	0.88 (10)
	No HPQ motif			
SB20	HPL	34		

To further characterize the binding of the selected peptides to streptavidin, truncation mutants for peptide SB19

were constructed to determine which regions were necessary for high affinity streptavidin-binding (FIG. 5). Deletion of up to 56 residues had no observable effect on the binding strength. For example, peptide SB19-C4 retained only the first 38 residues from the selected construct (plus the C-terminal sequence MMSGGCKLG, SEQ ID No.: 36) and had a dissociation constant of 4.9 nM for streptavidin (Table 1). In contrast, N-terminal truncation mutations (N1-N3) resulted in a lower percentage of the encoded peptide specifically eluting from the streptavidin column (0.058 to 69% for the truncation mutants compared to 85% for full length SB19). These results suggested that the determinants for binding streptavidin were spread throughout the N-terminal 38 residues of the SB19 peptide.

High affinity streptavidin-binding peptides, such as those shown in Table 1, have a number of uses. For example, these peptides may be used for protein purification by expressing a protein of interest as a fusion protein joined to one or more of the streptavidin-binding peptides of the invention. In one such purification method, a sample containing the fusion protein is incubated with immobilized streptavidin. Proteins with no or weak affinity for streptavidin are washed away, and the fusion protein is then selectively eluted from the streptavidin matrix by addition of biotin, a biotin analog, another streptavidin-binding peptide, or any compound that competes with the fusion protein for binding to the matrix. Alternatively, the fusion protein may be eluted from the matrix by increasing or decreasing the pH of the buffer applied to the matrix.

As described in detail below, this general protocol was used in a one-step purification of a fusion protein containing a streptavidin-binding peptide from an *E. coli* extract, resulting in a high yield of very pure protein. This fusion protein contained the first 38 amino acids of the SB19-C4 peptide, which due to its small size was not expected to affect the three-dimensional structure or activity of the covalently-linked protein of interest. Purification of fusion proteins containing other streptavidin-binding peptides of the present invention may be performed similarly.

In addition, various modifications of the above purification protocol would be apparent to one skilled in the art (see, for example, Ausubel et al., supra), and such modifications are included in the invention. In particular, use of the streptavidin-binding peptides as affinity tags is desirable for high throughput protein production and purification. For example, purification of fusion proteins in a multi-well format may be conducted using magnetic streptavidin beads that are washed and eluted robotically. The methods of the present invention may also be adapted to purify fusion proteins from in vitro translation mixtures or from other extracts, such as those from prokaryotic, yeast, insect, or mammalian cells, using standard techniques. If necessary, avidin may be added to the extract to bind any free biotin in the extract before contacting a sample from the extract with streptavidin. Allowing any free biotin to bind avidin may prevent biotin from competing with the streptavidin-binding peptides for binding to streptavidin.

If desired, the presence of a fusion protein of the invention in a sample may be detected by incubating the fusion protein with streptavidin (i.e., unlabeled streptavidin or streptavidin that is labeled with a detectable group) under conditions that allow streptavidin to bind the fusion protein. Preferably, the unbound streptavidin is separated from the streptavidin-bound fusion protein. Then, the streptavidin that is bound to the fusion protein is detected. Alternatively, the streptavidin bound to the fusion protein is physically separated from the fusion protein and then detected, using standard methods.

For example, to detect streptavidin that is bound to the fusion protein or that has been separated from the fusion protein, Western or ELISA analysis may be performed using an antibody that reacts with streptavidin or that reacts with a compound that is covalently linked to streptavidin. If streptavidin is covalently linked to an enzyme, radiolabel, fluorescent label, or other detectable group, the amount of streptavidin may be determined using standard techniques based on a characteristic of the detectable group such as its enzyme activity, radioactivity, or fluorescence (see, for example, Ausubel et al., supra). Alternatively, streptavidin may be contacted with a streptavidin-binding compound that is covalently linked to an enzyme, radiolabel, fluorescent label, or other detectable group, and the detectable group may be assayed as described herein.

We have also developed an improved method to generate synthetic DNA libraries encoding full-length proteins, which may be used in a variety of selection methods to isolate proteins with desired binding affinities or activities. The generation of libraries of proteins containing a desired number of amino acids is often limited by the number of internal initiation events that result in truncated proteins and the number of frameshifts that result in either premature stop codons or the removal of desired stop codons. For example, during solid phase DNA synthesis, insertions and deletions which cause frameshifts may occur due to imperfect coupling and capping efficiencies. In addition, the random regions in DNA templates may encode stop codons, resulting in premature truncation of the encoded protein. To address these problems, we have developed a method in which small DNA cassettes are synthesized, and an in vitro selection using the mRNA display technology is performed to enrich the library of DNA cassettes for sequences encoding two protein affinity tags. These DNA cassettes lack frameshifts and premature stop codons. The selected DNA cassettes are then cleaved with restriction enzymes and ligated to generate the full-length DNA library (FIGS. 8A–8F) (Cho et al., *J. Mol. Biol.* 297:309–319, 2000).

In one preferred embodiment of this method, mRNA display templates that contain a translation enhancer sequence operably-linked to an open reading frame and that terminate in puromycin are generated as described previously (Cho et al., supra). The open reading frame encodes two different protein affinity tags, such as a FLAG tag and a hexahistidine tag. Preferably, one of the tags is located at the amino-terminus of the encoded peptide, and the other tag is located at the carboxy-terminus. The mRNA display templates are in vitro translated to generate mRNA displayed peptides (Cho et al., supra). mRNA displayed peptides encoded by templates that do not contain frameshifts or premature stop codons should contain both affinity tags. In contrast, templates that contain frameshifts or premature stop codons encode peptides without the C-terminal affinity tag (FIG. 8D). Additionally, mRNA display templates that initiate internally produce peptides without the N-terminal affinity tag (FIG. 8C). The library of mRNA displayed peptides is enriched for peptides containing both affinity tags by purification of the mRNA displayed peptides based on the presence of these tags (see, for example, Ausubel et al., supra). For example, the mRNA displayed peptides may be applied to a matrix designed to bind peptides containing one of the affinity tags, and the mRNA display peptides without the affinity tag are washed away. The mRNA display peptides containing the affinity tag are then eluted and applied to a second matrix designed to bind the other affinity tag. The mRNA display peptides recovered from this purification step are enriched for members containing both affinity tags

and thus for full-length peptides. These mRNA displayed peptides are reversed transcribed to generate double-stranded DNA. The amplified DNA is then cleaved by restriction enzymes. Preferably, this restriction digestion removes the sequences encoding the affinity tags from the DNA cassettes. The cleaved DNA cassettes are then ligated to generate the full-length DNA templates.

The experiments described above were carried out as follows.

10 Generation of a Streptavidin-Binding Peptide Library

The mRNA display method for selecting peptides or proteins of interest takes advantage of the translation-terminating antibiotic puromycin, which functions by entering the A site of ribosomes and forming a covalent bond with the nascent peptide. By covalently attaching puromycin to the 3' end of an mRNA, a covalent link between a polypeptide and its encoding message can be achieved in situ during in vitro translation (Roberts et al., *Curr. Opin. Struct. Biol.* 9:521–529, 1999; Liu et al., *Methods Enzymol.* 318:268–293, 2000). These mRNA-peptide fusions can then be purified and subjected to in vitro selection, yielding the isolation of novel peptide ligands.

A DNA library encoding polypeptides of 108 amino acids was synthesized as described (Cho et al., supra). The library consisted of short cassettes concatamerized together. Each cassette encoded a random peptide with a pattern of polar versus non-polar amino acid side chains compatible with forming an amphipathic α -helix or β -strand (Cho et al., supra). The random region was 88 amino acids long, followed by a C-terminal invariant region containing a hexahistidine tag (FIG. 1A).

The library had a complexity of 2.4×10^{14} at the DNA level. It was transcribed using T7 RNA polymerase (FIG. 1A), after which a “linker” oligonucleotide was added to the 3' end using T4 DNA ligase as described (Liu et al., supra; Cho et al., supra). The linker consisted of a 21 nucleotide long dA stretch, followed by a polyethylene glycol linker, followed by the sequence dA-dC-dC-puromycin (Liu et al., supra).

This puromycin-terminated mRNA was translated in vitro, using the Ambion (Austin, Tex.) in vitro translation kit under standard conditions for capped mRNA. The 10 mL reaction mixture was supplemented with 2 mCi ^{35}S -methionine and a total methionine concentration of 10 μM . The reaction mixture also included 300 nM of the library of puromycin-linked mRNA molecules. After 1 hour at 30° C., MgCl_2 and KCl were added to 20 and 710 mM, respectively, and the reaction mixture was further incubated at room temperature for five minutes to increase the yield of displayed peptides. This in vitro translation produced 1.2×10^{14} polypeptides linked via the puromycin moiety to their encoding mRNAs.

These mRNA displayed peptides were then purified on oligo-dT cellulose (which binds to the oligo-dA sequence in the linker) to remove polypeptides not fused to mRNA. For this purification procedure, the reaction mixture was diluted 10-fold into oligo-dT-binding buffer (1M NaCl, 50 mM HEPES, 10 mM EDTA, 0.25% Triton X-100, and 5 mM 2-mercaptoethanol at pH 7.9) and 80 mg oligo-dT cellulose (type 7, Amersham-Pharmacia, Piscataway, N.J.) and incubated with agitation at 4° C. for 30 minutes. The mixture was applied to a column (Poly-Prep chromatography column, Biorad, Hercules, Calif.), drained, washed with 10 mL oligo-dT-binding buffer, washed with 10 mL oligo-dT-wash buffer (300 mM NaCl, 20 mM HEPES, 1 mM EDTA, 0.25% Triton X-100, and 5 mM 2-mercaptoethanol at pH 7.9), and washed with 1 mL of 0.5xoligo-dT-wash buffer. The mRNA-

displayed peptides were eluted with 4.5 mL water plus 5 mM 2-mercaptoethanol into tubes containing Triton X-100 and bovine serum albumin (BSA, New England Biolabs, Beverly, Mass.) at final concentrations of 0.15% and 15 $\mu\text{g}/\text{mL}$, respectively.

The mRNA-displayed peptides that eluted from the oligo-dT cellulose column were further purified on Ni—NTA agarose, which binds to the hexahistidine tags on the polypeptides, to remove any mRNA not fused to polypeptides. The eluted fractions from the oligo-dT cellulose purification were exposed to 0.5 mL Ni—NTA-agarose (Qiagen, Valencia, Calif.) in Ni-binding buffer [6 M guanidinium chloride, 0.5 M NaCl, 100 mM sodium phosphate, 10 mM Tris(hydroxymethyl)aminomethane, 0.1% Triton X-100, 5 mM 2-mercaptoethanol, 4 $\mu\text{g}/\text{mL}$ tRNA (Boehringer-Mannheim, Indianapolis, Ind.), and 5 $\mu\text{g}/\text{mL}$ BSA at pH 8.0] and incubated for 30 minutes at room temperature. The matrix was then drained, washed with 12 column volumes Ni-binding buffer, and eluted with the same buffer plus 100 mM imidazole. Eluted fractions were combined and de-salted using two successive NAP columns (Amersham-Pharmacia, Piscataway, N.J.) equilibrated in 1 mM Tris(hydroxymethyl)aminomethane, 0.01% Triton X-100, 50 μM EDTA, 0.5 mM 2-mercaptoethanol, 0.5 $\mu\text{g}/\text{mL}$ tRNA (Boehringer-Mannheim, Indianapolis, Ind.), and 50 $\mu\text{g}/\text{mL}$ BSA at pH 7.6).

The mRNA portion was then reverse transcribed using Superscript II (Gibco BRL, Rockville, Md.) according to the manufacturers instructions, except that the mRNA concentration was about 5 nM and the enzyme concentration was 1 U/ μL . To ensure a high yield in the reaction, a mixture of two primers were used: 1 μM of "splint" from the splinted ligation (Cho et al., supra), and 1 μM of the 3' PCR primer. After 30 minutes at 42° C., the temperature of the reaction mixture was raised to 50° for 2 minutes, and then cooled over 5 minutes to room temperature to allow gradual peptide folding. Finally, the contents were de-salted using NAP columns and subjected to scintillation counting. By comparing the ³⁵S counts of the purified, reverse transcribed mRNA-peptide fusions to the ³⁵S-methionine stock and taking into consideration the total methionine concentration in the translation reaction (10 μM), the number of displayed peptides in this sample was determined to be 6.7×10^{12} . This number also represents the complexity of the library, since it contained virtually no redundancy (the complexity of puromycin-linker template used in the translation exceeds the number of recovered displayed peptides by a factor of about 35).

Samples from the synthesis and purification of the mRNA displayed peptides were run on an SDS-PAGE gel, as shown in FIG. 1B.

Selection of Streptavidin-Binding Peptides

For selection of peptides with high affinity for streptavidin, the above mRNA displayed peptide library was incubated with immobilized streptavidin (Ultralink immobilized streptavidin plus, about 4 mg/mL; Pierce, Rockford, Ill.) in streptavidin-binding buffer under reducing conditions (40 mM Tris(hydroxymethyl)aminomethane, 300 mM KCl, 2 mM EDTA, 0.1% Triton X-100, 5 mM 2-mercaptoethanol, 100 $\mu\text{g}/\text{mL}$ BSA, and 1 $\mu\text{g}/\text{mL}$ tRNA at pH 7.4). The amount of gel used was 0.5 mL in a total volume of 5.5 mL. After incubating for 20 minutes at room temperature, the contents were loaded onto a disposable chromatography column, drained, washed with 14 column volumes of streptavidin-binding buffer, and eluted with five successive aliquots, at 10 minutes intervals, of streptavidin-binding buffer plus 2 mM D-biotin (Sigma, St. Louis, Mo.) (FIG. 1A). The fraction of

the library that survived this purification was 0.08%. Elution fractions were combined, de-salted on NAP columns, and then PCR-amplified to regenerate the double-stranded DNA library using the described conditions and primers in a 8 mL reaction mixture (Cho et al., supra).

This concluded the first round of selection, and the remaining six rounds followed the same protocol except that the translation was scaled down 10-fold, and the number of column volumes for washing the streptavidin column was increased (32 volumes for round 2; 40 volumes for rounds 3, 4 and 6; and 25 volumes for rounds 5 and 7). The streptavidin-binding selection for rounds 5 and 7 was performed directly on the streptavidin-column eluate from the preceding selection rounds, without intervening amplification (the biotin was removed by three successive passages through NAP columns). PCR products amplified after the seventh selection round were cloned using the TOPO TA cloning kit (Invitrogen, Carlsbad, Calif.), following the manufacture's protocol. The fraction of the library that bound and eluted from the streptavidin column increased in each round, reaching 61% at round seven (FIG. 2A).

Characterization of the Selected Library

The eluate from the seventh round of selection was amplified by PCR. The resulting PCR DNA was used to synthesize a library of displayed peptides to confirm that the displayed peptides, rather than the RNA or DNA portion of the library constructs, were responsible for the interaction with streptavidin. Treatment of the library with RNase A did not reduce the extent of binding/elution from the matrix (FIG. 2B). Also, biotin-saturated streptavidin showed no binding to the peptide library (FIG. 2B). These results demonstrated that the interaction of the selected peptides with the streptavidin matrix was specific for the unligated protein, rather than for any other component of the matrix. Sequence Analysis of Selected Peptides

Thirty-three randomly chosen clones from the PCR DNA from round seven were chosen for sequencing. Twenty different sequences were observed (FIG. 3). Surprisingly, all 20 sequences were frame-shifted from the intended frame (frame 1) to frame 3 by deletion of two nucleotides or addition of one nucleotide. The designed pattern of polar and non-polar residues was therefore discarded, leaving an unpatterned, essentially random sequence. Prior to the selection, about half of the library members were in frame 1 throughout their entire open reading frames (Cho et al., supra). Frame 3 appears to have been enriched over frame 1 due to the increased frequency of the sequence HPQ. Frame 1 has a low incidence (1:45,000 library members) of the sequence HPQ due to the designed polar/non-polar pattern. By contrast, frame 3 had a much higher expected incidence of the HPQ sequence (1:64), similar in frequency to that of a library of the same length and with equal mixtures of all four nucleotides at each position (1:193). Also, frame 3 was rich in histidine, thus allowing retention on the Ni—NTA column. The Ni—NTA purification protocol was intended to eliminate library mRNA molecules not displaying peptide, but was not performed under sufficiently stringent conditions so as to eliminate peptides with small numbers of histidines. Frame 2 had a high incidence of stop codons.

Nineteen of the 20 clones had at least one HPQ motif, and five clones contained two such motifs (Table 1). The clones were organized according to the number of times the HPQ and related tripeptide motifs occur (Table 1). The number of amino acids between the two motifs, when present, ranged from four to 74.

Binding Affinities of Peptides

To rapidly assay each of the 20 selected peptides to determine their affinity for streptavidin, a new method for

preparing, tagging and purifying the peptides was employed. For generation of the DNA-tagged peptides, plasmids containing single inserts were used as templates for PCR-amplification using the same 5' PCR primer as described for the library construction (Cho et al., supra), and a new 3' primer

(5'-ATAGCCGGTGCCAAGCTTGCAGCCGCCAGACCA GT-3'; SEQ ID No. 30), which altered the 3' RNA sequence to ACUGGUCUGGCCGCGCUGCAAGCUUGGCAC-CGGCUAU (SEQ ID No. 31). This sequence was designed to anneal to the photo-crosslinking linker, which has the sequence

5'-psoralen-TAGCCGGTG-A17-CC-puromycin-3', in which the underlined bases are 3'-methoxy nucleotides and the remaining bases are deoxynucleotides (the oligonucleotide was synthesized using reagents from Glen Research, Sterling, Va.). This new primer changed the constant C-terminal peptide sequence from WSGGCHHHHHSSA (SEQ ID No. 32) to WSGGCKLGTGY (SEQ ID No. 33), of which the last three amino acids may not be translated because they are annealed to the linker. Each DNA template was transcribed and gel purified as described (Cho et al., supra), and then incubated with the psoralen linker under the following conditions: 2 μ M mRNA, 4 μ M linker, 50 mM Tris(hydroxymethyl)aminomethane, 200 mM KCl, and 10 mM spermidine at pH 7.4 and 70° C. for 2 minutes, and then cooled to 4° C. over 5 minutes. Samples were then placed in the cold room in a 96 well plate (50 μ L/well), one inch above which was suspended a UV lamp (366 nm, Ultraviolet Products, Inc., San Gabriel, Calif., model number UVL-21) for 15 minutes. Then, the reactions mixtures were de-salted using a G-50 Sephadex spin column (Boehringer Mannheim, Indianapolis, Ind.). The translation/display reactions and oligo-dT-purification were carried out as above. Finally, RNase A (200 ng/mL, 10 minutes, room temperature) was added to degrade the mRNA, leaving peptides fused to a short DNA oligonucleotide. Complete degradation was confirmed by SDS-PAGE analysis.

The resulting purified DNA-tagged peptides (DTP) were analyzed in a streptavidin column-binding assay, in which ~500 pM ³⁵S-labeled DTP were mixed with 50 μ L of the streptavidin matrix in streptavidin-binding buffer, in a total volume of 300 μ L, and incubated for 10 minutes at room temperature with agitation. Then, the contents were loaded onto a chromatography column. The column was drained and washed with 80 column volumes of streptavidin-binding buffer, and then eluted with three consecutive aliquots (3 column volumes each) of streptavidin-binding buffer plus 2 mM biotin over a 15 minute period. All fractions (flow-through, washes, elutions, and irreversibly bound counts) were analyzed by scintillation counting to determine the fraction of DTP that bound streptavidin and eluted with biotin (Table 1). The non-selected clone in which two HPQ motifs (separated by 19 amino acids) were introduced encoded the sequence M DEAHPOAGPVDQADARLVQOGA LQHHPOGDRMMSGCKLGTGY (SEQ ID No. 34), in which the underlined portions are identical the HPQ regions of clone SB2.

The results of this analysis are shown in Table 1. For comparison, two HPQ motifs, separated by 19 residues, were introduced into a control, unselected member of the library. The low percentage of this control peptide that specifically eluted from the streptavidin column (0.16%) indicated that the presence of two HPQ motifs was not sufficient for high affinity binding. In contrast, a greater percentage of the selected peptides (8.3 to 88%) was

retained on the column during the washing step and then specifically eluted with biotin.

The dissociation constants of the selected peptides for streptavidin were measured using an electrophoretic mobility shift assay (EMSA). In this assay, DTP's were incubated with varying amounts of pure streptavidin (Pierce Immopure Streptavidin, Rockford, Ill.) in streptavidin-binding buffer plus 5% glycerol to increase the density of the solution so that it could collect at the bottom of the gel well. After incubating at room temperature for 20 minutes, the reactions mixtures were moved into the cold room, where they remained for 10 minutes before being carefully loaded onto a 10% polyacrylamide:bisacrylamide (37.5:1, National Diagnostics, Atlanta, Ga.) gel (thickness 0.7 mm, height 16 cm, width 18 cm) containing 2 \times TBE, 0.1% Triton X-100 and 5% glycerol. The gel, which had been pre-run for 30 minutes at 13 watts, and the running buffer were pre-cooled to 4° C. Then, the gel was run in the cold room at 13 watts, which increased the temperature of the gel to about 20° C. The gel was run for 45 to 120 minutes, depending on the mobility of the particular DTP. Then, the gel was fixed in 10% acetic acid and 10% methanol for 15 minutes, transferred to electrophoresis paper (Ahlstrom, Mt. Holly Springs, Pa.), dried, and analyzed using a PhosphorImager (Molecular Dynamics, Sunnyvale, Calif.).

The short DNA oligonucleotide tag on the DTP's allowed them to migrate in a native gel, and the addition of unlabeled ligand (i.e., streptavidin) caused a mobility shift for several of the clones. The concentration of DTPs was less than 1 nM in each titration, and thus the dissociation constant (K_D) can be approximated by the concentration of streptavidin that results in half of the DTP being mobility-shifted. To determine the K_D , several different measurements were taken in the range of 25–75% of DTP bound (values outside of this range were unreliable due to background and close proximity of the bound and unbound bands in the gel). The K_D was determined using the equation $K_D = [\text{streptavidin}] \times R$, where R is the ratio of unbound to bound DTP (ratio of unshifted to shifted band). Independent measurements on gels prepared at different times were used for each clone (the number of different measurements, n, is shown in Table 1). Streptavidin concentrations were measured by UV₂₈₂, using the molar extinction coefficient of 57,000 per monomer.

Examples of these mobility shifts in the presence of streptavidin are shown in FIG. 4A. Some clones showed either no shift or poorly defined bands, suggesting that the lifetime of these complexes was too short for detection using this method. We chose five of the most well behaved clones and quantitatively examined their mobility shifts in response to a range of streptavidin concentrations. An example of a streptavidin titration experiment for peptide SB19 is shown in FIG. 4B, and the data is graphed in FIG. 4C. The dissociation constants for the clones ranged from 110 nM to less than 5 nM (Table 1). These surprisingly high affinities were comparable to those for monoclonal antibody-antigen interactions, demonstrating that even random, non-constrained peptide libraries can be a source of avid ligands to proteins that do not normally function in peptide binding. Dissection of Clone SB19

Clone SB19 possessed only one HPQ motif, bound to 85% in the column binding assay, and had a K_D for streptavidin of 10 nM (Table 1). A series of C-terminal truncation constructs (C1–C4) were constructed and assayed in the streptavidin column-binding assay (FIG. 5). C-terminal truncation analysis of clone SB19 was performed using standard methods by amplifying the clone with the original 5' primer and a series of 3' primers that truncated the

sequence at various positions and also replaced two codons (encoding Asp and Trp) in the C-terminal constant region with methionine codons to increase the ³⁵S-incorporation. Analogous primers were used for the N-terminal truncation analysis, except that no change was made in the N-terminal constant sequence.

Deletion of up to 56 residues had no observable effect on the binding strength. Peptide SB19-C4 retained only the first 38 residues from the selected construct (plus the C-terminal MMSGGCKLG sequence, SEQ ID No. 36). Mutating the HPQ motif to HGA reduced the activity by three orders of magnitude (compare construct C4 to M1). Results from the N-terminal truncation constructs (N1-N3) suggested that binding determinants were spread throughout the N-terminal 38 residues of peptide SB19. Of the peptides tested, SB19-C4 was therefore the minimal peptide retaining full activity in this assay. EMSA analysis of peptide SB19-C4 confirmed high affinity streptavidin-binding, but a fraction (13%) of the peptide was inactive even at streptavidin concentrations >1 μM. The majority (87%), however, had an apparent K_D of 4.9 nM after correction for the amount of inactive peptide. Purification of Fusion Protein Containing Streptavidin-Binding Peptide

A fusion protein containing the first 38 amino acids of the SB19-C4 streptavidin-binding peptide (FIG. 7A) was expressed in *E. coli* and then purified from the cell lysate. For the expression of the fusion protein, BL21 (DE3) cells were transformed with a plasmid containing a Maltose Binding Protein—Streptavidin-binding Peptide—His₆-Protein of Interest insert (FIG. 11) which encodes a fusion protein containing, from the amino- to carboxy-terminus, maltose-binding protein, the first 38 residues of the SB19-C4 sequence, a hexahistidine tag, and another peptide called 2r18-19dN (FIGS. 6A-6C). This insert was constructed using standard molecular biology techniques (see, for example, Ausubel et al., supra). Each of these domains of the fusion protein is separated by a few amino acids to allow proper folding of the domains.

A kanamycin-resistant colony was selected and grown overnight in 10 ml LB media with 50 mg/liter kanamycin at 37° C. This starter culture was diluted 100-fold into 1000 ml LB with 50 mg/liter kanamycin, and the culture was grown at 37° C. to OD₆₀₀ of 1.6-1.8 at 37° C. Expression of the fusion protein was induced by addition of 1 mM IPTG, and the culture was grown for another two hours. The cells were pelleted by centrifugation at 3000-5000×g for 20 minutes. The pelleted cells were resuspended in 5% of the original volume of a buffer appropriate for the subsequent affinity purification method. For purification on an amylose column the cells were resuspended in 1 mM EDTA and MBP buffer (10 mM HEPES.HCl, 10 mM HEPES.Na⁺, 200 mM KCl, 0.25% w/w Triton X-100, and 10 mM BME at pH 7.4) and frozen slowly at -20° C. overnight. The sample was thawed in the morning and sonicated on ice. The cell lysate was obtained by collection of the supernatant after centrifugation at 14,000×g for 20 minutes at 4° C.

To purify the fusion protein, the cell lysate was applied to a column containing immobilized streptavidin, with a capacity of about 1 mg/ml, that had been washed with eight column volumes of MBP buffer. Then, the column was washed with 12 column volumes of MBP buffer. The fusion protein was eluted with MBP buffer containing 2 mM biotin. Samples of the cell lysate and eluted protein were analyzed by SDS-PAGE on an 8% gel (FIG. 7B). The lane containing the purified protein had a band of the expected size. No other bands were observed, except for a faint band of slightly higher mobility (FIG. 7B). This band was probably a deg-

radation product of the fusion protein that was missing a few amino acids from either the amino- or carboxy-terminus but retained the streptavidin-binding peptide and thus retained the ability to bind the streptavidin column. Thirty percent of the fusion protein loaded onto a column containing immobilized streptavidin was recovered after washing the column with 12 column volumes of buffer. Thus, the high affinity of the fusion protein for streptavidin allowed extensive washing of the column to remove contaminating proteins, while retaining a significant amount of the desired fusion protein.

More stringent conditions eliminated the contaminating protein of higher molecular weight. The soluble fraction of lysed induced cells was prepared in Streptavidin-binding buffer (SBB: 300 mM KCl, 40 mM Tris(hydroxymethyl) amino methane, 5 mM 2-mercaptoethanol, 2 mM EDTA, 0.1% Triton-X 100, pH 7.4) as described above. This sample (e.g., 79 mg net weight cells in 1 ml SBB) was applied directly to the immobilized streptavidin matrix (e.g., column volume 100 μl; Ultralink Immobilized Streptavidin Plus, Pierce, Rockford Ill.) and then incubated at 4° C. for 30 minutes. The matrix was then washed with 40 column volumes of SBB and then eluted with 3 successive 2 column volume aliquots of SBB containing 2 mM biotin for 10 minutes each. Samples of each of the lysed uninduced and lysed induced cells, the soluble fraction, and the elution fraction were then analyzed on an 8% SDS-Tricine PAGE gel, and then stained with Coomassie Brilliant Blue. In a typical experiment, 1 ml of the soluble fraction of lysed induced cells was loaded onto 0.1 ml of the affinity matrix.

Purification using the His-tag was also carried out in an analogous manner to the streptavidin binding peptide-tag procedure with the same amounts of cells and in the same volumes. The soluble fraction was prepared in His-tag binding buffer (300 mM NaCl, 50 mM sodium phosphate, 0.25% Triton X-100, 10 mM imidazole, pH 8.0). The sample was applied directly to the Ni-column (Ni-NTA, Qiagen, Valencia Calif.) and then incubated at 4° C. for 30 minutes. The matrix was then washed with 40 column volumes of the same buffer containing 20 mM imidazole and then eluted with 3 successive 2 column volume aliquots of the same buffer containing 250 mM imidazole for 10 minutes each. Samples were analyzed as described above.

Purification using the maltose-binding protein sequence was carried out in an analogous manner to the streptavidin binding peptide-tag procedure with the same amounts of cells and in the same volumes. The soluble fraction was prepared in maltose-binding protein binding buffer (200 mM KCl, 20 mM HEPES, 10 mM 2-mercaptoethanol, 0.25% Triton X-100, pH 7.4). The sample was applied directly to the amylose column (New England Biolabs, Beverly, Mass.) and then incubated at 4° C. for 30 minutes. The matrix was then washed with 40 column volumes of the same buffer and then eluted with 3 successive 2 column volume aliquots of the same buffer containing 10 mM maltose for 10 minutes each.

For detection, ten picomoles of the loaded and eluted samples from the immobilized streptavidin column, the Ni-column, and the amylose column was loaded onto a 12% SDS-Tricine PAGE gel. In the adjacent lane, a whole bacterial extract from BL21 (DE3) cells was loaded. The whole cell extract was prepared by growing the cells to saturation in LB, removing the media by centrifugation, and re-suspending them in 10% of the original culture volume with the SDS-PAGE protein-loading buffer. Six microliters of this extract was run on the gel. These two samples and a molecular weight marker were run side by side on the gel in duplicate. After running the gel, it was stained with Coomassie Brilliant Blue

This gel is shown in FIG. 13. A band of the correct size was purified using each of the three columns. Purification on immobilized streptavidin gave the highest purity sample. No other bands were visible by Coomassie Brilliant Blue-stained SDS-Tricine PAGE gel analysis. At least one impurity was detected in the Ni—NTA-purified sample, and several contaminants were apparent in the amylose-purified sample. These results suggest that the streptavidin binding peptide-tag provides superior purity after a single purification step from lysed induced cells.

Detection of Fusion Proteins Containing Streptavidin Binding Peptides Using Streptavidin-Derived Reagents

Recombinant proteins containing streptavidin affinity tags may also be detected using reagents that bind to these affinity tags. A wide range of streptavidin-derivatized reagents is commercially available, and as a consequence the streptavidin binding peptide-tag provides a versatile detection tool. To demonstrate the utility of this interaction, an experiment was performed in which a recombinant protein was probed with streptavidin-derivatized horseradish peroxidase.

In this experiment the multiply-tagged protein was purified on the streptavidin column. The purified protein and an *E. coli* cell lysate were electrophoresed in adjacent lanes of a SDS-Tricine PAGE gel as described above. The protein on the gel was transferred to nitrocellulose (Trans-blot transfer medium, 0.2 μ m, Biorad catalog number 162-0112) at 10 V for 30 minutes using the manufacturer's instructions (Trans-blot semi-dry transfer cell, Biorad catalog number 170-3940). Efficient protein transfer was confirmed by the presence of the pre-stained molecular weight markers on the nitrocellulose.

After transfer, the nitrocellulose was incubated in TBS (25 mM TrisHCl, 138 mM NaCl, 2.68 mM KCl, pH 7.4) plus 0.05% Polyoxyethylene-sorbitan monolaurate (Tween-20) and 3% BSA for 1 hour at room temperature. The blot was then briefly rinsed with the same buffer without BSA, and then a streptavidin-derivatized horseradish peroxidase conjugate (Amersham-Pharmacia, product number RPN1231) was added at a 1,000-fold dilution in TBS/0.05% Tween-20/3% BSA, and allowed to incubate for 1 hour at room temperature. The blot was then washed 3 times with TBS/0.05% Tween-20, and then one time with TBS. The HRP substrate (3,3',5,5'-tetramethylbenzidine, Promega catalog number W4121) was then added according to the manufacturer's instructions, and the blot was developed for approximately 1 minute.

These results are shown in FIG. 14. The streptavidin binding peptide-tagged protein is readily observed, and no proteins from the *E. coli* lysate are labeled, thus indicating the specificity of this interaction. Streptavidin-derivatized horseradish peroxidase and other streptavidin-derivatized reagents therefore provide many alternative methods of detecting streptavidin binding peptide-tagged proteins on membranes, plates, tissue sections, et cetera.

Yield of Fusion Proteins Containing Streptavidin-Binding Peptides

When scaling up protein expression to one milligram and above, the capacity and expense of the affinity matrix often begins to become important. To measure the capacity of the three matrices described above for their respective tag sequences, each matrix was overloaded with the multiply-tagged protein. Cells over-expressing this protein were split into three aliquots and re-suspended in different buffers according to the matrix that was to be used. The sample applied to immobilized streptavidin was extracted into streptavidin-binding buffer, and the samples for the other

two purifications were extracted into the buffers recommended by the manufacturers of the two matrices, as described above.

The amount of protein in the flow-throughs, washes, and elution fractions was measured using the Bradford assay. We confirmed that each column was overloaded by observing the multiply-tagged protein in the flow-through fractions from each column. Purification using Ni—NTA agarose (His-tag/imidazole) yielded 12 mg of protein per ml of matrix. The amylose column yielded 4.4 mg of protein per ml of matrix. The immobilized streptavidin column yielded 0.5 mg of protein per ml of matrix (0.53 mg/ml with a standard deviation of 0.07 mg/ml, n=4). The overall capacity of immobilized streptavidin for the streptavidin binding peptide-tag was therefore lower than that of the Ni—NTA agarose or amylose matrices for their respective tags, but significantly greater than that of immobilized antibody matrices for purifying proteins upon the basis of epitope tags.

Biacore Analysis of the Affinity of a Fusion Protein for Streptavidin

The SB19-C4 streptavidin-binding fusion protein was expressed and purified from *E. coli*. This fusion protein contained, from the amino- to carboxy-terminus, maltose-binding protein, the first 38 amino acids of the SB19-C4 sequence, and a hexahistidine tag (FIG. 9B, SEQ ID No. 41). The plasmid (FIG. 9A, SEQ ID No. 40) encoding this fusion protein was constructed using standard molecular biology techniques and used to express the fusion protein in *E. coli* as described above. This fusion protein was purified from the *E. coli* extract using amylose resin to bind the maltose-binding protein portion of the fusion protein and then Ni—NTA resin to bind the hexahistidine tag.

To measure the affinity of the fusion protein for streptavidin, the fusion protein was immobilized on a biacore chip through the crosslinking of free amino groups in the fusion protein to the biacore chip. Buffer containing streptavidin was washed over the chip, allowing streptavidin to bind the immobilized fusion protein (FIG. 10B). This resulted in an increase in the biacore response units which are proportional to the amount of streptavidin adhering to the biacore chip. Then buffer without streptavidin was washed over the chip, and the biacore response units decreased as streptavidin dissociated from the immobilized fusion protein (FIGS. 10A and 10B). To measure the association rate for the binding of streptavidin to the fusion protein, streptavidin concentrations of 1.6, 0.8, 0.4, 0.2, 0.1, or 0.05 μ M, (lines "a" to "f" in FIG. 10B, respectively) were washed over the biacore chip. The buffer also contained 40 mM Tris(hydroxymethyl)aminomethane, 300 mM KCl, 2 mM EDTA, 0.1% w/v Triton X-100, and 5 mM 2-mercaptoethanol at pH 7.4. This data was used to calculate an association rate, k_a , of 5×10^4 /M/s, as described previously (BIACORE X Instrument Handbook, version AA, Biacore AB, Uppsala Sweden, 1997). To measure the dissociation rate, a pulse of 23, 11.5, or 5.75 μ M streptavidin in the buffer described above was administered, and then buffer without streptavidin was washed over the chip (FIG. 10A). This data was used to calculate an upper limit of 2×10^{-3} /s for the dissociation rate, K_D (BIACORE X Instrument Handbook, supra). Based on these calculated association and dissociation rates, the dissociation constant, K_D , for the binding of streptavidin by this fusion protein was less than 40 nM. This result confirms the high affinity binding of the SB19-C4 peptide for streptavidin that was observed in the streptavidin column-binding assay and the EMSA assay (Table 1). Additionally, this result demonstrates that this

peptide maintains its high affinity for streptavidin when expressed as part of a fusion protein.

Spin-Filter Binding Inhibition Assay Analysis of the Affinity of a Fusion Protein for Streptavidin

To measure the K_D of the peptide described above, a second and more general method, termed a Spin-filter Binding Inhibition Assay (SBIA), was also utilized. This method is especially appropriate for cases in which numerous proteins or peptides are derived from in vitro selection techniques using immobilized targets such as phage display (Smith, G. P. et al. *Chem. Rev.* 97:391–410, 1997), mRNA display (Roberts et al. *Proc. Natl. Acad. Sci. USA* 94:12297–12302, 1997; Liu et al. *Methods Enzymol.* 318:268–293, 2000; Keefe et al. *Current Protocols in Molecular Biology* 2001; Keefe et al. *Nature* 410:715–718, 2001) or ribosome display (Jermutus et al. *Curr. Opin. Biotechnol.* 9:391–410, 1998). The principal benefit of this method is that it allows the affinities and specificities of interacting proteins to be assayed before investing the time required to over-express and purify them in the quantities required for conventional affinity determinations.

In general, SBIA utilizes low concentrations ($<K_D$) of ^{35}S -labeled protein generated in a cell-free translation system. The labeled protein is exposed to the bead-immobilized target (in this case immobilized streptavidin), and then the flow-through is collected by centrifugation in a 0.2 μm Durapore® spin-filter. The fraction of counts that pass through the filter (and therefore did not bind to the column) indicates the fraction of labeled peptide that did not bind to the matrix. To determine the affinity of the interaction, the labeled protein is first exposed to a range of concentrations of non-immobilized target. After this mixture has reached equilibrium, it is briefly (1 minute) exposed to the bead-immobilized target, and then spin-filtered as above. The initial incubation with the soluble target will compete with the binding of the radio-labeled protein to the immobilized target. The amount of inhibition is directly related to the fraction of labeled protein that was bound to the free target before this mixture was exposed to the immobilized target. By plotting the immobilized target-binding inhibition against the concentration of the free target, the K_D can easily be derived.

Because this titration is based on the interaction of the protein with the free (not immobilized) target, it may be more accurate than methods that quantify peptide binding to immobilized targets. However, SBIA may underestimate the affinity if there is significant dissociation of the complex during the brief incubation with immobilized target. The K_D corresponds to the concentration of free target that half-inhibits the binding to the immobilized target. As long as the concentration of the labeled binder is significantly lower than the K_D , the concentration of free target may be approximated as the total concentration of added target. This method may be generally useful for the determination of K_D values for protein-protein, protein-peptide, and protein-small molecule complexes.

To measure the K_D of the SB19-C4 peptide, this peptide was fused to a FLAG-tag (streptavidin binding peptide-FLAG) (Wilson et al. *Proc. Natl. Acad. Sci. USA* 98:3750–3755, 2001). Streptavidin binding peptide-FLAG was then translated in the presence of ^{35}S -labeled methionine by in vitro translation in reticulocyte lysate according to the manufacturer's instructions (Red Nova, Novagen, Madison, Wis.) using a template concentration of 400 nM, 1 mM extra MgCl_2 and 100 mM extra KCl. This mixture was then purified successively upon the basis of the FLAG-tag and then the His-tag (using the manufacturer's instruc-

tions; denaturing conditions were used for the Ni—NTA purification). The resultant purified peptide was then dialyzed into streptavidin-binding buffer (SBB: 300 mM KCl, 40 mM Tris(hydroxymethyl) amino methane, 5 mM 2-mercaptoethanol, 2 mM EDTA, 0.1% Triton-X 100, pH 7.4). The peptide was then diluted into the same buffer and mixed with a range of different streptavidin concentrations to give a set of 50 μl samples in which the SB19-FLAG peptide was at 200 pM and the streptavidin concentration ranged from 30 pM to 1 μM . Each of these samples was then incubated for 2 hours at 0° C. and then subsequently incubated for 1 minute with 10 μl samples of the washed and dried immobilized streptavidin matrix (Ultralink Immobilized Streptavidin Plus, Pierce, Rockford Ill.). The flow-throughs were then immediately collected by centrifugation in a 0.2 μm Durapore® spin-filter (Millipore, Bedford Mass.), and these were counted in a scintillation counter. These data were iteratively fitted to the following equation $y=b+c(K_D/(K_D+x))$ in which y was the number of radioactive decompositions detected per minute in each flow-through, K_D is the dissociation constant of the complex, x was the concentration of free streptavidin, b was the number of counts per minute not competent to bind the matrix under the assay conditions, and c was the number of counts per minute competent to bind the matrix under the assay conditions. K_D , b, and c were iteratively determined using the program Deltagraph 4.0 (SPSS, Chicago Ill.).

In this experiment, the binding of labeled streptavidin binding peptide-tagged peptide was inhibited by pre-incubation with free streptavidin (FIG. 12). In this experiment 48% of the counts bound to immobilized streptavidin in the 1 minute slurry incubation in the absence of free streptavidin competitor, and this binding was completely inhibited by high concentrations (>100 nM) of streptavidin. Analysis of the binding curve gave a K_D of 2.5 nM, which compared very favorably with the K_D determined by other methods. For example, the same peptide was purified on a FLAG-affinity matrix, then bound to streptavidin immobilized on a microtiter plate. The labeled streptavidin binding peptide-tagged peptide was incubated with a range of streptavidin concentrations for 1 hour before being transferred to a streptavidin-coated plate and incubated for five minutes. The labeled peptide not bound to the plate was pipetted off. The binding affinity was measured by competition with varying concentrations of streptavidin. Analysis of the binding curve gave a K_D of 2.4 \pm 0.1 nM. (FIG. 15)(2.4 nM; Wilson et al. *Proc. Natl. Acad. Sci. USA* 98:3750–3755, 2001). The streptavidin binding peptide-tag therefore bound to streptavidin with a \sim 5,000-fold higher affinity than does the Strep-tag II (Schmidt et al. *J. Mol. Biol.* 255:753–66, 1996). This higher affinity accounts for the fact that, after extensive washing (with 80 column volumes), the yield of retained peptide using the streptavidin binding peptide-tag was 2,200-fold higher than the yield using the Strep-tag II (Wilson et al. *Proc. Natl. Acad. Sci. USA* 98:3750–3755, 2001). Both the streptavidin binding peptide-tag and the Strep-tag II contain the tripeptide motif HPQ, but the flanking sequence in the streptavidin binding peptide-tag presumably provides additional favorable contacts with streptavidin.

Other Embodiments

From the foregoing description, it will be apparent that variations and modifications may be made to the invention described herein to adopt it to various usages and conditions. Such embodiments are also within the scope of the following claims.

All publications mentioned in this specification are herein incorporated by reference to the same extent as if each independent publication or patent application was specifically and individually indicated to be incorporated by reference.

SEQUENCE LISTING

<160> NUMBER OF SEQ ID NOS: 41

<210> SEQ ID NO 1
 <211> LENGTH: 101
 <212> TYPE: PRT
 <213> ORGANISM: Artificial Sequence
 <220> FEATURE:
 <223> OTHER INFORMATION: selected peptide

<400> SEQUENCE: 1

Met Asp Glu Lys Thr His Cys Thr Ile Ser Met Asn Gly Ala Val Pro
 1 5 10 15
 Leu Val Pro His His His Pro Gln Gly Asp Pro Leu Arg Leu Leu His
 20 25 30
 Arg Pro Gln Pro Ala Leu Leu Val Arg His Pro Gln Gly Asp Leu Val
 35 40 45
 Ala Leu Val Glu His His Glu Gly Val Asp Arg Gly Leu Val Ala Leu
 50 55 60
 Pro Glu Leu His Ala Glu Glu Leu Gly Glu Pro Val Gly Asp Leu Val
 65 70 75 80
 Gln Gly Pro Val Glu Gln Val Gln Gly Val Val Asp Ala Leu Val Trp
 85 90 95
 Arg Leu Pro Pro Ser
 100

<210> SEQ ID NO 2
 <211> LENGTH: 101
 <212> TYPE: PRT
 <213> ORGANISM: Artificial Sequence
 <220> FEATURE:
 <223> OTHER INFORMATION: selected peptide

<400> SEQUENCE: 2

Met Asp Glu Lys Thr His Cys Phe His Pro Gly Asp His Leu Val Arg
 1 5 10 15
 Leu Val Glu Glu Leu Gln Ala Leu Ala Glu Gly Leu Gln Arg Gln Gly
 20 25 30
 Gly Arg Gln Pro His Arg Leu Pro Arg Arg Arg Pro His His Leu Gln
 35 40 45
 Leu Leu Leu Asp Glu Ala His Pro Gln Ala Gly Pro Leu Arg Glu Arg
 50 55 60
 Ala His Gln Val Asp Gly Arg Leu Leu Leu Gln His His Pro Gln Gly
 65 70 75 80
 Asp Arg Leu Leu Gln Gln Pro Gln Asp His Pro Leu Glu Leu Val Trp
 85 90 95
 Arg Leu Pro Pro Ser
 100

<210> SEQ ID NO 3
 <211> LENGTH: 101
 <212> TYPE: PRT
 <213> ORGANISM: Artificial Sequence
 <220> FEATURE:
 <223> OTHER INFORMATION: selected peptide

<400> SEQUENCE: 3

Met Thr Arg Arg Pro Thr Ala Ser Ser Ser Ser Cys Val Arg His Leu
 1 5 10 15

-continued

Leu Leu Arg Gln Gly Glu His Gly His Gln Ala Leu Glu Asp Arg Asp
 20 25 30

Lys Ala Arg His Val Arg Leu Val Glu Gly Asp Val Glu Val Leu Gly
 35 40 45

Gly Leu Asp Arg Leu Ala Arg Ala Arg His Glu Ala Leu His Pro Gln
 50 55 60

Ala Gly Leu Val His Leu Pro Leu His Gly Gly Asp Leu Gly Gly His
 65 70 75 80

Leu Arg Leu Val Leu Glu Ala His Pro Gln Gly Asp Arg Leu Gly Leu
 85 90 95

Ala Val His His His
 100

<210> SEQ ID NO 4
 <211> LENGTH: 102
 <212> TYPE: PRT
 <213> ORGANISM: Artificial Sequence
 <220> FEATURE:
 <223> OTHER INFORMATION: selected peptide

<400> SEQUENCE: 4

Met Asp Glu Lys Thr His Trp Gly Ile Ser Thr Trp Arg Gly Glu Pro
 1 5 10 15

Leu Leu His His Pro Gln Ala Gly Arg Leu Pro Leu Asp Arg Arg Arg
 20 25 30

Ala Arg His Arg Arg Ile Leu Gly Ala Glu Pro Gly Gly Val Asp His
 35 40 45

Gly Leu Arg Leu Glu Leu Leu Asp Asp His Arg Pro Leu Val Pro Asp
 50 55 60

His His Pro Gln Arg Gly Pro Leu Gln Arg Gly Asp Leu Pro Gln Val
 65 70 75 80

Val Pro Leu Val Arg Leu Arg His Ala His Val Leu Gly Leu Gly Leu
 85 90 95

Ala Ala Ala Thr Ile Thr
 100

<210> SEQ ID NO 5
 <211> LENGTH: 102
 <212> TYPE: PRT
 <213> ORGANISM: Artificial Sequence
 <220> FEATURE:
 <223> OTHER INFORMATION: selected peptide

<400> SEQUENCE: 5

Met Asp Glu Lys Thr His Trp Val Asn Val Tyr His Pro Gln Gly Asp
 1 5 10 15

Leu Leu Val Arg Gly His Gly His Asp Val Glu Ala Leu His Asp Gln
 20 25 30

Gly Leu His Gln Leu Asp Leu Leu Val Gly Pro Pro Pro Glu Val Val
 35 40 45

Arg Ala Leu Arg Gly Glu Val Leu Gly Gly Leu Arg Arg Leu Val Pro
 50 55 60

Leu Asp His Pro Gln Gly Glu Ala Leu Asp Gln Ala Arg Gln Arg Pro
 65 70 75 80

Gln His Leu Leu Glu Leu His His Arg Ala Leu Pro Pro Ala Leu Val
 85 90 95

Trp Arg Leu Pro Pro Ser
 100

-continued

<210> SEQ ID NO 6
 <211> LENGTH: 102
 <212> TYPE: PRT
 <213> ORGANISM: Artificial Sequence
 <220> FEATURE:
 <223> OTHER INFORMATION: selected peptide

<400> SEQUENCE: 6

```
Met Asp Glu Lys Thr His Trp Leu Asn Asn Phe Glu Glu Leu Leu Ala
  1                               5           10           15
Arg Leu Asp Gly Leu Arg Glu Gly Glu Asp His Pro Leu Val Leu Arg
  20                               25           30
His His Pro Gln Gly Asp Gly Leu Leu Asp Gln Pro Leu Gly Arg His
  35                               40           45
Arg Ala Leu Asp Gly Glu Val Arg Glu Gly Asp Arg Pro Leu Asp Gln
  50                               55           60
Gly Gly Glu Glu Asp Leu Gly Ala Leu Val Asp Asp Asp Gly Glu Val
  65                               70           75           80
Leu Asp Gly Leu Val His Val Gly Val His Val His Asp Pro Leu Val
  85                               90           95
Cys Gly Cys His His His
  100
```

<210> SEQ ID NO 7
 <211> LENGTH: 101
 <212> TYPE: PRT
 <213> ORGANISM: Artificial Sequence
 <220> FEATURE:
 <223> OTHER INFORMATION: selected peptide

<400> SEQUENCE: 7

```
Met Asp Glu Lys Thr His Trp Phe Gly Thr Leu Asn Ser Phe Pro Thr
  1                               5           10           15
His Trp Met Ser Ala Val Gly Asn Gly Lys Ile Asp Cys Ser Phe Asn
  20                               25           30
Met Asn Leu Ser Leu Asn His Trp Leu Ser Ser Gly His Pro Asp Gly
  35                               40           45
Ala Leu Asp Asp Gln Leu His Pro Gln Gly Asp Ala Leu Val Gly Arg
  50                               55           60
Asp Asp Gly Val Val Gln Ala Leu Arg Leu Glu Gly Gln His Gln His
  65                               70           75           80
Arg Arg Leu Ala Gln Arg Arg Ala Asp Arg His Arg Gln Leu Val Trp
  85                               90           95
Arg Leu Pro Pro Ser
  100
```

<210> SEQ ID NO 8
 <211> LENGTH: 102
 <212> TYPE: PRT
 <213> ORGANISM: Artificial Sequence
 <220> FEATURE:
 <223> OTHER INFORMATION: selected peptide

<400> SEQUENCE: 8

```
Met Asp Glu Lys Thr His Cys Thr Ile Glu Leu Asn Phe Ser Phe Thr
  1                               5           10           15
His Trp Lys Leu His His His Pro Gln Gly Asp Ala Leu Leu Asp Asp
  20                               25           30
```

-continued

Gly Val Arg Pro His His Pro Leu Ala Asp Glu Gly Gly Gly Leu Asp
 35 40 45
 Gln Gly Leu Gly His Arg Arg Gly Val Val Ala Glu Arg Leu Ala Arg
 50 55 60
 Arg Asp Pro Glu Val Leu Glu Gly Leu Val Glu Arg His Arg Gly Leu
 65 70 75 80
 Val Pro Arg Leu Arg His Gly Gly Glu Arg His Ala Glu Pro Leu Val
 85 90 95
 Trp Arg Leu Pro Pro Ser
 100

<210> SEQ ID NO 9
 <211> LENGTH: 102
 <212> TYPE: PRT
 <213> ORGANISM: Artificial Sequence
 <220> FEATURE:
 <223> OTHER INFORMATION: selected peptide

<400> SEQUENCE: 9

Met Asp Glu Lys Thr His Cys Asn Thr Gly Leu Tyr Asp Gly Ala Ala
 1 5 10 15
 Asp Cys Phe Asn Glu Leu Asn Lys Asp Val Ala Pro Leu Val Glu Gly
 20 25 30
 Arg His Asp Leu Val Glu Gly Leu Leu Leu Glu Arg His Pro Gln Gly
 35 40 45
 Asp Pro Leu Val Ala His Arg Gln Leu Val His His Pro Leu Leu Gly
 50 55 60
 Arg Gly Glu Arg His Arg Arg Ala Leu Val Pro Gln Gln Glu His Gln
 65 70 75 80
 Pro His Arg Leu Gln Pro Val Val Asp Leu Gly Arg Arg Arg Leu Val
 85 90 95
 Trp Arg Leu Pro Pro Ser
 100

<210> SEQ ID NO 10
 <211> LENGTH: 103
 <212> TYPE: PRT
 <213> ORGANISM: Artificial Sequence
 <220> FEATURE:
 <223> OTHER INFORMATION: selected peptide

<400> SEQUENCE: 10

Met Asp Glu Lys Thr His Trp His Glu Arg Ala Gln Glu Leu Val Gly
 1 5 10 15
 Gly Leu Leu Leu His Asp His Pro Gln Arg Leu Leu Leu Glu Pro Arg
 20 25 30
 Gly Pro Arg Pro Leu Arg Gly Leu Val His Glu Arg Gly His Gln Pro
 35 40 45
 Gln Pro Leu Ala Gly Arg Val Glu Glu Ala Asp Gly Gly Leu Leu Arg
 50 55 60
 Asp Gly Gly Gly Glu Leu Glu Pro Leu Val Arg Glu Gly Glu Asp His
 65 70 75 80
 Leu Glu Pro Leu Asp Asp Glu Leu Asp Ala Gly Pro Arg Gly Leu Val
 85 90 95
 Trp Arg Leu Pro His His His
 100

<210> SEQ ID NO 11

-continued

```

<211> LENGTH: 102
<212> TYPE: PRT
<213> ORGANISM: Artificial Sequence
<220> FEATURE:
<223> OTHER INFORMATION: selected peptide

<400> SEQUENCE: 11
Met Asp Glu Lys Thr His Trp His Glu Arg Val His His Leu Ala Asp
 1                    5                      10                15
Gly Leu Glu Gln His Pro Gln Gly Gln Arg Arg Pro Leu Val Glu Arg
                20                      25                30
His Arg Gln Val Pro Arg Gly Leu Val Arg Glu Leu Gln His Glu Gly
          35                      40                45
Leu Pro Leu Glu His Pro Ala Gly Val His Val Ile Arg Leu His Gln
 50                      55                60
Gly Asp Asp Arg Asp Val Asp Gly Leu Val Asp Gly His Gly Arg Asp
65                      70                75                80
Val Arg Gly Leu Glu Arg Glu Val Gly Asp Gly Pro His Arg Leu Val
          85                      90                95
Trp Arg Leu Pro Pro Ser
                100

```

```

<210> SEQ ID NO 12
<211> LENGTH: 101
<212> TYPE: PRT
<213> ORGANISM: Artificial Sequence
<220> FEATURE:
<223> OTHER INFORMATION: selected peptide

<400> SEQUENCE: 12
Met Asp Lys Asp Pro Leu Leu Glu Glu Leu Glu Glu Leu Arg Glu Arg
 1                    5                      10                15
Leu Val His His Pro Gln Gly Gly Leu Leu Pro Leu Arg Gly Gln Val
                20                      25                30
Gly His Asp Ala Glu Arg Leu Gly Ala Glu Val Asp Asp Leu Arg Gly
          35                      40                45
Gly Leu Leu Asp Glu Pro Gln Arg Ala Val Ala Gly Leu His His Val
 50                      55                60
Pro His Arg Val Gly Gln Arg Leu Val His Glu Val Arg Glu Leu Asp
65                      70                75                80
Glu Gly Leu Leu Asp Gln Arg Asp Asp Leu Arg Gln Arg Leu Val Trp
          85                      90                95
Arg Leu Pro Pro Ser
                100

```

```

<210> SEQ ID NO 13
<211> LENGTH: 102
<212> TYPE: PRT
<213> ORGANISM: Artificial Sequence
<220> FEATURE:
<223> OTHER INFORMATION: selected peptide

<400> SEQUENCE: 13
Met Glu Arg Glu Asp Pro Leu Asp Glu Gln Leu Arg Glu Leu Arg Glu
 1                    5                      10                15
Ala Leu Val Asp His Pro Gln Gly Gly Ala Gln Ala Leu His Arg His
                20                      25                30
Asp Gly Gly Glu His Val Pro Leu Arg Arg Val Gln His Arg Leu Gln
          35                      40                45

```


-continued

Pro Gly Leu Gln His His Leu Glu Pro Gln Pro Leu Gly Leu Leu Gly
 50 55 60

Glu Leu Gln Ala Arg Leu Gln Pro Leu Ala Gly Glu His Glu Gly Asp
 65 70 75 80

Gly Ala Gly Leu Gln Arg Val Pro Gly His Gln Gly Arg Arg Leu Val
 85 90 95

Trp Arg Leu Pro Pro Ser
 100

<210> SEQ ID NO 14
 <211> LENGTH: 101
 <212> TYPE: PRT
 <213> ORGANISM: Artificial Sequence
 <220> FEATURE:
 <223> OTHER INFORMATION: selected peptide

<400> SEQUENCE: 14

Met Asp Glu Lys Thr His Arg Thr Leu Ser Val Ser Leu Ser Phe Asn
 1 5 10 15

Asp Trp Leu Gly Gln Thr Lys Ala Cys Trp Arg Leu Val Glu Gly Leu
 20 25 30

His Gly His Pro Gln Gly Leu Val Arg Glu His Glu Val Asp Val Leu
 35 40 45

Pro Leu Ala Glu Glu Val Gln Gln Val Val Gly Gly Leu Ala Asp Gly
 50 55 60

Val Glu Gln Pro Gly Gly Leu Leu His Arg Ala Gln Arg Val Asp
 65 70 75 80

His Pro Leu Pro Asp His Ala Gly Gln Val Leu Gly Arg Leu Val Trp
 85 90 95

Arg Leu Pro Pro Ser
 100

<210> SEQ ID NO 15
 <211> LENGTH: 101
 <212> TYPE: PRT
 <213> ORGANISM: Artificial Sequence
 <220> FEATURE:
 <223> OTHER INFORMATION: selected peptide

<400> SEQUENCE: 15

Met Asp Glu Lys Thr His Trp Leu Glu Asp Leu Lys Gly Val Leu Lys
 1 5 10 15

Asp Cys Leu Lys Asp Leu Met Asp Phe Thr Lys Asp Cys Arg Ser Pro
 20 25 30

Arg Val Gln Pro Gln Pro Leu Leu His His Asp Arg Gly Glu Pro Val
 35 40 45

Pro Leu Leu Arg Glu Ala Gly Arg Asp Leu Gly Gly Leu Gly Pro Arg
 50 55 60

Ala Pro Arg Gln Ala Arg Pro Leu His His Gly Arg His Asp Leu His
 65 70 75 80

Glu Pro Leu Val Leu Gln Asp His Pro Gln Gly Gly Pro Leu Val Cys
 85 90 95

Gly Cys His His His
 100

<210> SEQ ID NO 16
 <211> LENGTH: 102
 <212> TYPE: PRT
 <213> ORGANISM: Artificial Sequence

-continued

```

<220> FEATURE:
<223> OTHER INFORMATION: selected peptide

<400> SEQUENCE: 16
Met Asp Glu Lys Thr His Trp Val Leu Gln Leu His Pro Gln Gly Asp
 1             5             10            15
Arg Leu Gly Pro Arg His Gly Gly Asp Asp Val Arg Leu Val Gly Gln
          20             25            30
Gly Glu Gly Val Leu Glu Gly Leu Asp Gly Arg Pro Arg Arg Arg Arg
          35             40            45
His Arg Leu Pro Arg Glu Asp Glu His Arg Val Arg Ala Leu Val Asp
          50             55            60
Gln Val Arg Asp Leu Ala Glu Arg Leu Val Glu Glu Val Asp Gly Gly
65             70            75            80
Val Glu Ala Leu Arg His Leu Gly Leu Pro Gln Asp Glu Pro Arg Ser
          85             90            95
Gly Gly Cys His His His
          100

```

```

<210> SEQ ID NO 17
<211> LENGTH: 102
<212> TYPE: PRT
<213> ORGANISM: Artificial Sequence
<220> FEATURE:
<223> OTHER INFORMATION: selected peptide

```

```

<400> SEQUENCE: 17
Met Asp Glu Lys Thr His Trp Val Gly Asp Leu Gln Glu Pro Leu Gly
 1             5             10            15
Pro Leu His Gly Gly Val Gly Glu Val Pro Gly Gly Leu Val Leu Arg
          20             25            30
His His Pro Gln Arg Asp Arg Leu Val Asp Gly Val Gly Pro His Gly
          35             40            45
Arg Ala Leu Ala Arg Arg Pro His Arg Val Val Glu Gly Leu His His
          50             55            60
Leu Leu Gln Arg Gly Gly Glu Arg Leu Pro Pro Asp Gly Pro Arg Gln
65             70            75            80
Leu Gly Leu Leu Gly Gly Glu Leu Asp Arg Ala Asp Pro Ala Leu Val
          85             90            95
Trp Arg Leu Pro Pro Ser
          100

```

```

<210> SEQ ID NO 18
<211> LENGTH: 101
<212> TYPE: PRT
<213> ORGANISM: Artificial Sequence
<220> FEATURE:
<223> OTHER INFORMATION: selected peptide

```

```

<400> SEQUENCE: 18
Met Asp Glu Lys Thr His Cys Ala Val Asn Val Asn Val Gly Leu Thr
 1             5             10            15
His Trp Cys His Arg Val Ala His Leu Gln Pro Leu Asp Pro His Pro
          20             25            30
Gln Gly Asp His Leu Arg Leu Glu Pro Leu Gly His Ala Leu Val Asp
          35             40            45
Pro Leu Val Gln Gly Val Glu Glu Val Val Arg Pro Leu Gln Leu Asp
          50             55            60

```

-continued

Val Gly Val Gln Arg Val Ala Leu Val Glu Gln Val Ala Glu Val Gly
 65 70 75 80
 Glu Gly Leu Asp His Glu Ala Gly Gln Ala His Gly Ala Leu Val Trp
 85 90 95
 Arg Leu Pro Pro Ser
 100

<210> SEQ ID NO 19
 <211> LENGTH: 101
 <212> TYPE: PRT
 <213> ORGANISM: Artificial Sequence
 <220> FEATURE:
 <223> OTHER INFORMATION: selected peptide
 <400> SEQUENCE: 19

Met Asp Glu Lys Thr Thr Gly Trp Arg Gly Gly His Val Val Glu Gly
 1 5 10 15
 Leu Ala Gly Glu Leu Glu Gln Leu Arg Ala Arg Leu Glu His His Pro
 20 25 30
 Gln Gly Gln Arg Glu Pro Leu Val Gln Glu Val Glu Asp Val Asp Glu
 35 40 45
 Gly Leu Val Gln Asp Leu His Gly Val Val Ala Gly Leu Leu Asp Pro
 50 55 60
 Val Glu Lys Leu Leu Thr Asp Trp Phe Lys Lys Phe Lys Asn Val Ser
 65 70 75 80
 Lys Asp Cys Lys Met Thr Phe Tyr Leu Glu Met Tyr Asp Trp Ser Gly
 85 90 95
 Gly Cys His His His
 100

<210> SEQ ID NO 20
 <211> LENGTH: 102
 <212> TYPE: PRT
 <213> ORGANISM: Artificial Sequence
 <220> FEATURE:
 <223> OTHER INFORMATION: selected peptide
 <400> SEQUENCE: 20

Met Asn Glu Lys Thr His Cys Lys Leu Asn Phe Lys Val Asn Ile Ala
 1 5 10 15
 Asp Trp Leu Ala Glu Phe His Gly Gly Gly Gln Gly Leu Leu Gly Arg
 20 25 30
 Arg Asp Gly Val Val Gln Arg Leu Val Asp Gly Val Gln Glu Arg Val
 35 40 45
 Glu Arg Leu Asp Arg Asp Pro Gly Leu Gly Asp Leu Arg Leu Glu Leu
 50 55 60
 His His Arg Asp His Arg Leu Arg Leu Gly Gly Glu His Leu Leu Arg
 65 70 75 80
 Asp His Pro Leu Glu Pro Asp Asp His Leu Val Val Gly Gly Leu Val
 85 90 95
 Trp Arg Leu Pro Pro Ser
 100

<210> SEQ ID NO 21
 <211> LENGTH: 101
 <212> TYPE: PRT
 <213> ORGANISM: Artificial Sequence
 <220> FEATURE:
 <223> OTHER INFORMATION: selected peptide

-continued

<400> SEQUENCE: 21

```

Met Asp Glu Lys Thr Thr Gly Trp Arg Gly Gly His Val Val Glu Gly
 1           5           10          15
Leu Ala Gly Glu Leu Glu Gln Leu Arg Ala Arg Leu Glu His His Pro
           20           25           30
Gln Gly Gln Arg Glu Pro Leu Val Gln Glu Val Glu Asp Val Asp Glu
           35           40           45
Gly Leu Val Gln Asp Leu His Gly Val Val Ala Gly Leu Leu Asp Pro
           50           55           60
Val Glu Lys Leu Leu Thr Asp Trp Phe Lys Lys Phe Lys Asn Val Ser
65           70           75           80
Lys Asp Cys Lys Met Thr Phe Tyr Leu Glu Met Tyr Asp Trp Ser Gly
           85           90           95
Gly Cys Lys Leu Gly
           100

```

<210> SEQ ID NO 22

<211> LENGTH: 89

<212> TYPE: PRT

<213> ORGANISM: Artificial Sequence

<220> FEATURE:

<223> OTHER INFORMATION: selected peptide

<400> SEQUENCE: 22

```

Met Asp Glu Lys Thr Thr Gly Trp Arg Gly Gly His Val Val Glu Gly
 1           5           10          15
Leu Ala Gly Glu Leu Glu Gln Leu Arg Ala Arg Leu Glu His His Pro
           20           25           30
Gln Gly Gln Arg Glu Pro Leu Val Gln Glu Val Glu Asp Val Asp Glu
           35           40           45
Gly Leu Val Gln Asp Leu His Gly Val Val Ala Gly Leu Leu Asp Pro
           50           55           60
Val Glu Lys Leu Leu Thr Asp Trp Phe Lys Lys Phe Lys Asn Val Ser
65           70           75           80
Met Met Ser Gly Gly Cys Lys Leu Gly
           85

```

<210> SEQ ID NO 23

<211> LENGTH: 75

<212> TYPE: PRT

<213> ORGANISM: Artificial Sequence

<220> FEATURE:

<223> OTHER INFORMATION: selected peptide

<400> SEQUENCE: 23

```

Met Asp Glu Lys Thr Thr Gly Trp Arg Gly Gly His Val Val Glu Gly
 1           5           10          15
Leu Ala Gly Glu Leu Glu Gln Leu Arg Ala Arg Leu Glu His His Pro
           20           25           30
Gln Gly Gln Arg Glu Pro Leu Val Gln Glu Val Glu Asp Val Asp Glu
           35           40           45
Gly Leu Val Gln Asp Leu His Gly Val Val Ala Gly Leu Leu Asp Pro
           50           55           60
Val Glu Met Met Ser Gly Gly Cys Lys Leu Gly
65           70           75

```

<210> SEQ ID NO 24

<211> LENGTH: 61

-continued

```

<212> TYPE: PRT
<213> ORGANISM: Artificial Sequence
<220> FEATURE:
<223> OTHER INFORMATION: selected peptide

<400> SEQUENCE: 24

Met Asp Glu Lys Thr Thr Gly Trp Arg Gly Gly His Val Val Glu Gly
 1           5           10          15

Leu Ala Gly Glu Leu Glu Gln Leu Arg Ala Arg Leu Glu His His Pro
 20          25          30

Gln Gly Gln Arg Glu Pro Leu Val Gln Glu Val Glu Asp Val Asp Glu
 35          40          45

Gly Leu Val Gln Met Met Ser Gly Gly Cys Lys Leu Gly
 50          55          60

```

```

<210> SEQ ID NO 25
<211> LENGTH: 47
<212> TYPE: PRT
<213> ORGANISM: Artificial Sequence
<220> FEATURE:
<223> OTHER INFORMATION: selected peptide

<400> SEQUENCE: 25

```

```

Met Asp Glu Lys Thr Thr Gly Trp Arg Gly Gly His Val Val Glu Gly
 1           5           10          15

Leu Ala Gly Glu Leu Glu Gln Leu Arg Ala Arg Leu Glu His His Pro
 20          25          30

Gln Gly Gln Arg Glu Pro Met Met Ser Gly Gly Cys Lys Leu Gly
 35          40          45

```

```

<210> SEQ ID NO 26
<211> LENGTH: 47
<212> TYPE: PRT
<213> ORGANISM: Artificial Sequence
<220> FEATURE:
<223> OTHER INFORMATION: selected peptide

<400> SEQUENCE: 26

```

```

Met Asp Glu Lys Thr Thr Gly Trp Arg Gly Gly His Val Val Glu Gly
 1           5           10          15

Leu Ala Gly Glu Leu Glu Gln Leu Arg Ala Arg Leu Glu His His Gly
 20          25          30

Ala Gly Gln Arg Glu Pro Met Met Ser Gly Gly Cys Lys Leu Gly
 35          40          45

```

```

<210> SEQ ID NO 27
<211> LENGTH: 39
<212> TYPE: PRT
<213> ORGANISM: Artificial Sequence
<220> FEATURE:
<223> OTHER INFORMATION: selected peptide

<400> SEQUENCE: 27

```

```

Met Asp Gly His Val Val Glu Gly Leu Ala Gly Glu Leu Glu Gln Leu
 1           5           10          15

Arg Ala Arg Leu Glu His His Pro Gln Gly Gln Arg Glu Pro Met Met
 20          25          30

Ser Gly Gly Cys Lys Leu Gly
 35

```

```

<210> SEQ ID NO 28
<211> LENGTH: 89

```

-continued

```

<212> TYPE: PRT
<213> ORGANISM: Artificial Sequence
<220> FEATURE:
<223> OTHER INFORMATION: selected peptide

<400> SEQUENCE: 28

Met Asp Glu Gly Leu Ala Gly Glu Leu Glu Gln Leu Arg Ala Arg Leu
 1           5           10           15
Glu His His Pro Gln Gly Gln Arg Glu Pro Leu Val Gln Glu Val Glu
 20           25           30
Asp Val Asp Glu Gly Leu Val Gln Asp Leu His Gly Val Val Ala Gly
 35           40           45
Leu Leu Asp Pro Val Glu Lys Leu Leu Thr Asp Trp Phe Lys Lys Phe
 50           55           60
Lys Asn Val Ser Lys Asp Cys Lys Met Thr Phe Tyr Leu Glu Met Tyr
 65           70           75           80
Asp Trp Ser Gly Gly Cys Lys Leu Gly
 85

```

```

<210> SEQ ID NO 29
<211> LENGTH: 29
<212> TYPE: PRT
<213> ORGANISM: Artificial Sequence
<220> FEATURE:
<223> OTHER INFORMATION: selected peptide

<400> SEQUENCE: 29

Met Glu Leu Glu Gln Leu Arg Ala Arg Leu Glu His His Pro Gln Gly
 1           5           10           15
Gln Arg Glu Pro Met Met Ser Gly Gly Cys Lys Leu Gly
 20           25

```

```

<210> SEQ ID NO 30
<211> LENGTH: 35
<212> TYPE: DNA
<213> ORGANISM: Artificial Sequence
<220> FEATURE:
<223> OTHER INFORMATION: primer

<400> SEQUENCE: 30

atagccggtg ccaagcttgc agccgccaga ccagt

```

35

```

<210> SEQ ID NO 31
<211> LENGTH: 35
<212> TYPE: DNA
<213> ORGANISM: Artificial Sequence
<220> FEATURE:
<223> OTHER INFORMATION: primer

<400> SEQUENCE: 31

acuggucugg cggcugcaag cuuggcaccg gcuau

```

35

```

<210> SEQ ID NO 32
<211> LENGTH: 14
<212> TYPE: PRT
<213> ORGANISM: Artificial Sequence
<220> FEATURE:
<223> OTHER INFORMATION: selected peptide

<400> SEQUENCE: 32

Trp Ser Gly Gly Cys His His His His His His Ser Ser Ala
 1           5           10

```

-continued

<210> SEQ ID NO 33
 <211> LENGTH: 11
 <212> TYPE: PRT
 <213> ORGANISM: Artificial Sequence
 <220> FEATURE:
 <223> OTHER INFORMATION: designed peptide
 <400> SEQUENCE: 33

Trp Ser Gly Gly Cys Lys Leu Gly Thr Gly Tyr
 1 5 10

<210> SEQ ID NO 34
 <211> LENGTH: 44
 <212> TYPE: PRT
 <213> ORGANISM: Artificial Sequence
 <220> FEATURE:
 <223> OTHER INFORMATION: designed peptide
 <400> SEQUENCE: 34

Met Asp Glu Ala His Pro Gln Ala Gly Pro Val Asp Gln Ala Asp Ala
 1 5 10 15

Arg Leu Val Gln Gln Gly Ala Leu Gln His His Pro Gln Gly Asp Arg
 20 25 30

Met Met Ser Gly Gly Cys Lys Leu Gly Thr Gly Tyr
 35 40

<210> SEQ ID NO 35
 <211> LENGTH: 38
 <212> TYPE: PRT
 <213> ORGANISM: Artificial Sequence
 <220> FEATURE:
 <223> OTHER INFORMATION: selected peptide
 <400> SEQUENCE: 35

Met Asp Glu Lys Thr Thr Gly Trp Arg Gly Gly His Val Val Glu Gly
 1 5 10 15

Leu Ala Gly Glu Leu Glu Gln Leu Arg Ala Arg Leu Glu His His Pro
 20 25 30

Gln Gly Gln Arg Glu Pro
 35

<210> SEQ ID NO 36
 <211> LENGTH: 9
 <212> TYPE: PRT
 <213> ORGANISM: Artificial Sequence
 <220> FEATURE:
 <223> OTHER INFORMATION: designed peptide
 <400> SEQUENCE: 36

Met Met Ser Gly Gly Cys Lys Leu Gly
 1 5

<210> SEQ ID NO 37
 <211> LENGTH: 6688
 <212> TYPE: DNA
 <213> ORGANISM: Artificial Sequence
 <220> FEATURE:
 <223> OTHER INFORMATION: plasmid
 <400> SEQUENCE: 37

atccggatat agttcctcct ttcagcaaaa aaccctcaa gaccggttta gaggcccaa 60
 ggggttatgc tagttattgc tcagcggtag cagcagccaa ctcagcttcc tttcgggctt 120
 tgttagcagc cggatctcag tggtagtggg ggtggtgctc gaggcggcc gcaagctttt 180

-continued

agtcgtcatg tccatgatag gtgtcgtccc cgatatcaat gctattgtta aagcaggtct	240
tacacatggt atagatcctc aaatgcttgt tcttcacctt ccagttccgg ggagccacct	300
tgcaattcac acaagggtcc atgctacctc ggggtaccaa gaattcgtga tgatggtgat	360
ggtgaccgga tcctggttca cgttgacctt gtgggtgatg ctccagtcgt gcacgaagtt	420
gttcaagttc cccagccagt ccttcaacaa cgtgtccacc tcgccaacca gtggtcttct	480
ctccatccc tgagccgcta cctcctgagc tcgaattagt ctgcgcgtct ttcagggtct	540
catcgacagt ctgacgaccg ctggcggcgt tgatcaccgc agtacgcacg gcataccaga	600
aagcggacat ctgcggtatg ttcggcatga tttcaccttt ctgggcgttt tccattgttg	660
cggcaatacg tggatcttcc gccaaactct cctcgtgaaga cttcagcgtc acggcaccca	720
gcggtttgtc tttattaacc gcttccagac cttcatcagt cagcagatag ttttcgagga	780
actcttttgc cagctctttg ttcggactgg cggcgtaaat acctgcgctc agcacgcaa	840
cgaacggttt ggatggttga ccttgaagg tcggcagtac cgttacacca taattcactt	900
tgctggtgtc gatgttgac catgcccacg ggcggttgat ggtcatcgtc gtttcgcctt	960
tattaaagc agcttctgag atggagtaat cgggtgctgc attcatgtgt ttgtttttaa	1020
tcaggtaaac caggaaggtc agaccgctt tcgcccagc gttatccacg cccacgtctt	1080
taatgtcgt cttgccgttt tcatacttga acgcataacc cccgtcagca gcaatcagcg	1140
gccaggtgaa gtacggttct tgcaggttga acatcagcgc gctcttaact ttcgctttca	1200
gttctttatc cagcgcggg atctcttccc aggtttttgg cgggttcggc agcagatctt	1260
tgttataaat cagcgataac gcttcaacag cgatcgggta agcaatcagc ttgccgttgt	1320
aacgtacggc atcccaggta aacggataca gcttgtcctg gaacgctttg tccggggtga	1380
ttcagccaa caggccagat tgagcgtagc caccaaagcg gtcgtgtgcc cagaagataa	1440
tgtcagggcc atcggcagtt gccgcaacct gtgggaattt ctcttcagc ttatccggat	1500
gctcaacggt gactttaatt ccggtatctt tctcgaattt cttaccgact tcagcagac	1560
cgttatagcc tttatcgcc ttaatccaga ttaccagttt acctctctcg attcccatgg	1620
tatatctcct tcttaaagtt aaacaaaatt atttctagag gggaaattgt atccgctcac	1680
aattccccta tagtgagtcg tattaatttc gcgggatcga gatctcgatc ctctacgccg	1740
gacgcatcgt ggccggcatc accggcgcca cagggtcggg tgctggcgcc tatatcgccg	1800
acatcaccga tggggaagat cgggctgcc acctcgggct catgagcgtc tgtttcggcg	1860
tgggtatggt ggcaggcccc gtggcgggg gactgttggg cgccatctcc ttgcatgcac	1920
cattccttgc ggcggcggg ctcaacggcc tcaacctact actgggctgc ttcctaagtc	1980
aggagtcgca taaggagag cgctcagatc cggacacca tcgaatggcg caaaccttt	2040
cgcggtatgg catgatagcg cccggaagag agtcaattca ggggtgtgaa tgtgaaacca	2100
gtaacgttat acgatgtcgc agagtatgcc ggtgtctett atcagaccgt tcccgcgtg	2160
gtgaaccagc ccagccacgt tctctcgaaa acgcgggaaa aagtggaaag gccgatggcg	2220
gagctgaatt acattccaa ccgcgtggca caacaactgg cgggcaaaca gtcgttgctg	2280
attggcgttg ccacctccag tctggccctg cacgcgccgt cgcaattgt cgcggcgatt	2340
aaatctcgcg ccgatcaact ggggtccagc gtggtggtgt cgatggtaga acgaagcggc	2400
gtcgaagcct gtaaagcgc ggtgcacaat cttctcgcgc aacgcgtcag tgggctgatc	2460
attaactatc cgctggatga ccaggatgcc attgtctgtg aagetgctg cactaatgtt	2520
ccggcgttat tctttagat ctctgaccag acaccatca acagtattat tttctccat	2580

-continued

gaagacggta	cgcgactggg	cgtggagcat	ctggtcgc	at	tgggtcacca	gcaaactcgcg	2640
ctgttagcgg	gcccattaag	ttctgtctcg	gcgcgtctgc	gtctggctgg	ctggcataaa		2700
tatctcactc	gcaatcaaat	tcagccgata	gcggaacggg	aaggcgaactg	gagtgccatg		2760
tccggttttc	aacaaacat	gcaaactcgt	aatgagggca	tcgttccac	tcgatgctg		2820
gttgccaacg	atcagatggc	gctggggcga	atgcgcgcca	ttaccgagtc	cgggctgcgc		2880
gttggcggc	atatctcgg	agtgggatac	gacgataccg	aagacagctc	atgttatatc		2940
ccgcggtta	ccaccatcaa	acaggatttt	cgctgctgg	ggcaaaccag	cgtggaccgc		3000
ttgctgcaac	tctctcagg	ccaggcggg	aagggcaatc	agctgttgcc	cgtctcactg		3060
gtgaaaagaa	aaaccaccct	ggcgccaat	acgcaaaccg	cctctccccg	cgcgttgcc		3120
gattcattaa	tcagctggc	acgacagggt	tcccactgg	aaagcgggca	gtgagcgcaa		3180
cgcaattaat	gtaagttagc	tactcatta	ggcaccggga	tctcgaccga	tgcccttgag		3240
agccttcaac	ccagtcagct	ccttcgggtg	ggcgcggggc	atgactatcg	tcgccgact		3300
tatgactgtc	ttctttatca	tgcaactcgt	aggacagggtg	ccggcagcgc	tctgggtcat		3360
ttcggcgag	gaccgcttc	gctggagcgc	gacgatgatc	ggcctgtcgc	ttcgggtatt		3420
cggaatcttg	cacgcccctg	ctcaagcctt	cgtcactggt	cccgccacca	aacgtttcgg		3480
cgagaagcag	gccattatcg	ccggcatggc	ggccccacgg	gtgcgcatga	tcgtgctcct		3540
gtcgttgag	acccgctag	gctggcgggg	ttgccttact	ggttagcaga	atgaatcacc		3600
gatacgcgag	cgaacgtgaa	gcgactgctg	ctgcaaaacg	tctgcgacct	gagcaacaac		3660
atgaatggtc	ttcggtttcc	gtgtttcgt	aagtctggaa	acgcggaagt	cagcgcctc		3720
caccattatg	ttccggatct	gcacgcag	atgctgctgg	ctaccctgtg	gaacacctac		3780
atctgtatta	acgaagcgt	ggcattgacc	ctgagtgatt	tttctctggt	cccgccgcat		3840
ccataccgcc	agttgtttac	cctcacaacg	ttccagtaac	cgggcatggt	catcatcagt		3900
aaccgctatc	gtgagcatcc	tctctcgttt	catcggatc	attaccccc	tgaacagaaa		3960
tcccccttac	acggaggcat	cagtgaccaa	acaggaaaa	accgccctta	acatggcccg		4020
ctttatcaga	agccagacat	taacgcttct	ggagaaactc	aacgagctgg	acgcggatga		4080
acaggcagac	atctgtgaat	cgttcacga	ccacgctgat	gagctttacc	gcagctgcct		4140
cgcgcgtttc	ggtgatgacg	gtgaaaacct	ctgacacatg	cagctcccgg	agacggtcac		4200
agcttgctctg	taagcggatg	ccgggagcag	acaagcccgt	cagggcgcgt	cagcgggtgt		4260
tggcgggtgt	cggggcgag	ccatgacc	gtcacgtagc	gatagcggag	tgtatactgg		4320
cttaactatg	cggcatcaga	gcagattgta	ctgagagtgc	accatatatg	cgggtgaaa		4380
taccgcacag	atgcgtaagg	agaaaatacc	gcacagggc	ctctccgct	tcctcgtca		4440
ctgactcgtc	gcctcggtc	gttcggctgc	ggcgagcgg	atcagctcac	tcaaaggcgg		4500
taatacgggt	atccacagaa	tcaggggata	acgcagaaa	gaacatgta	gcaaaaggcc		4560
agcaaaaggc	caggaaccgt	aaaaaggcgg	cgttgctggc	gtttttccat	aggctccgcc		4620
cccctgacga	gcacacaaa	aatcgacgct	caagtcagag	gtggcgaaac	ccgacaggac		4680
tataaagata	ccaggcgttt	ccccctgaa	gctccctcgt	gcgctctcct	gttccgacct		4740
tgccgcttac	cggatacctg	tccgcttct	tcccttcggg	aagcgtggcg	ctttctcata		4800
gctcacgctg	taggtatctc	agttcgggtg	aggtcgttgc	ctccaagctg	ggctgtgtgc		4860
acgaaccccc	cgttcagccc	gaccgctgcg	ccttatccgg	taactatcgt	cttgagtcca		4920

-continued

```

acccgtaag acacgactta tcgccactgg cagcagccac tggtaacagg attagcagag 4980
cgaggtatgt aggcggtgct acagagttct tgaagtggg gcctaactac ggctacacta 5040
gaaggacagt atttggtatc tgcgctctgc tgaagccagt taccttcgga aaaagagttg 5100
gtagctcttg atccggcaaa caaacaccg ctggtagcgg tggttttttt gtttgcaagc 5160
agcagattac gcgcagaaaa aaaggatctc aagaagatcc tttgatcttt tctacggggt 5220
ctgacgctca gtggaacgaa aactcacggt aagggatctt ggcatgaac aataaaactg 5280
tctgcttaca taaacagtaa tacaaggggt gttatgagcc atattcaacg ggaacgctct 5340
tgctctaggc cgcgattaaa ttccaacatg gatgctgatt tatatgggta taaatgggct 5400
cgcgataatg tcgggcaatc aggtgcgaca atctatcgat tgotatgggaa gcccgatgcg 5460
ccagagttgt ttctgaaaaa tggcaaaagg agcgttgcca atgatgttac agatgagatg 5520
gtcagactaa actggctgac ggaatctatg cctcttcgga ccatcaagca ttttatccgt 5580
actcctgatg atgcattggt actcaccact gcgatccccg ggaaaacagc attccaggta 5640
ttagaagaat atcctgattc aggtgaaaa atgtgtgatg cgctggcagt gttcctgctc 5700
cggttgcaat cgattcctgt ttgtaattgt cctttaaca gcgatcgcgt atttcgtctc 5760
gctcaggcgc aatcacgaat gaataacggt ttggttgatg cgagtgattt tgatgacgag 5820
cgtaatggct ggctgttgta acaagtctgg aaagaaatgc ataaactttt gccattctca 5880
ccggattcag tcgtcactca tgggtatttc tcaactgata accttatttt tgacgagggg 5940
aaattaatag gttgtattga tgttggacga gtcggaatcg cagaccgata ccaggatctt 6000
gccatctat ggaactgcct cggtagtctt tctccttcat tacagaaaac gctttttcaa 6060
aaatatggta ttgataatcc tgatatgaat aaattgcagt ttcatttgat gctcagatgag 6120
tttttctaag aattaattca tgagcggata catattttaa tgotatttaga aaaataaaca 6180
aatagggggt ccgcgccatc tccccgaaa agtgccacct gaaattgtaa acgttaatat 6240
tttgtaaaaa ttcgcggttaa atttttgta aatcagctca ttttttaacc aataggccga 6300
aatcggcaaa atcccctata aatcaaaaga atagaccgag ataggggtga gtgtttgtcc 6360
agtttggaac aagagctcac tattaagaa cgtggactcc aacgtcaaag ggcgaaaaac 6420
cgtctatcag ggcgatggcc cactacgtga accatcacc taatcaagtt ttttggggtc 6480
gaggtgccgt aaagcactaa atcgaaccc taaagggagc ccccgattta gagcttgacg 6540
gggaaagccg gcgaactggt cgagaaagga agggaagaaa gcgaaaggag cgggcgctag 6600
ggcgtggca agttagcgg tcacgctgcg cgtaaccacc acaccgccc cgcttaatgc 6660
gccgctacag ggcgctccc attcgcca 6688

```

```

<210> SEQ ID NO 38
<211> LENGTH: 479
<212> TYPE: PRT
<213> ORGANISM: Artificial Sequence
<220> FEATURE:
<223> OTHER INFORMATION: Designed protein

```

<400> SEQUENCE: 38

```

Met Gly Ile Glu Glu Gly Lys Leu Val Ile Trp Ile Asn Gly Asp Lys
 1           5           10          15
Gly Tyr Asn Gly Leu Ala Glu Val Gly Lys Lys Phe Glu Lys Asp Thr
          20          25          30
Gly Ile Lys Val Thr Val Glu His Pro Asp Lys Leu Glu Glu Lys Phe
 35          40          45

```

-continued

Pro Gln Val Ala Ala Thr Gly Asp Gly Pro Asp Ile Ile Phe Trp Ala
 50 55 60
 His Asp Arg Phe Gly Gly Tyr Ala Gln Ser Gly Leu Leu Ala Glu Ile
 65 70 75 80
 Thr Pro Asp Lys Ala Phe Gln Asp Lys Leu Tyr Pro Phe Thr Trp Asp
 85 90 95
 Ala Val Arg Tyr Asn Gly Lys Leu Ile Ala Tyr Pro Ile Ala Val Glu
 100 105 110
 Ala Leu Ser Leu Ile Tyr Asn Lys Asp Leu Leu Pro Asn Pro Pro Lys
 115 120 125
 Thr Trp Glu Glu Ile Pro Ala Leu Asp Lys Glu Leu Lys Ala Lys Gly
 130 135 140
 Lys Ser Ala Leu Met Phe Asn Leu Gln Glu Pro Tyr Phe Thr Trp Pro
 145 150 155 160
 Leu Ile Ala Ala Asp Gly Gly Tyr Ala Phe Lys Tyr Glu Asn Gly Lys
 165 170 175
 Tyr Asp Ile Lys Asp Val Gly Val Asp Asn Ala Gly Ala Lys Ala Gly
 180 185 190
 Leu Thr Phe Leu Val Asp Leu Ile Lys Asn Lys His Met Asn Ala Asp
 195 200 205
 Thr Asp Tyr Ser Ile Ala Glu Ala Ala Phe Asn Lys Gly Glu Thr Ala
 210 215 220
 Met Thr Ile Asn Gly Pro Trp Ala Trp Ser Asn Ile Asp Thr Ser Lys
 225 230 235 240
 Val Asn Tyr Gly Val Thr Val Leu Pro Thr Phe Lys Gly Gln Pro Ser
 245 250 255
 Lys Pro Phe Val Gly Val Leu Ser Ala Gly Ile Asn Ala Ala Ser Pro
 260 265 270
 Asn Lys Glu Leu Ala Lys Glu Phe Leu Glu Asn Tyr Leu Leu Thr Asp
 275 280 285
 Glu Gly Leu Glu Ala Val Asn Lys Asp Lys Pro Leu Gly Ala Val Ala
 290 295 300
 Leu Lys Ser Tyr Glu Glu Glu Leu Ala Lys Asp Pro Arg Ile Ala Ala
 305 310 315 320
 Thr Met Glu Asn Ala Gln Lys Gly Glu Ile Met Pro Asn Ile Pro Gln
 325 330 335
 Met Ser Ala Phe Trp Tyr Ala Val Arg Thr Ala Val Ile Asn Ala Ala
 340 345 350
 Ser Gly Arg Gln Thr Val Asp Glu Ala Leu Lys Asp Ala Gln Thr Asn
 355 360 365
 Ser Ser Ser Gly Gly Ser Gly Ser Gly Met Asp Glu Lys Thr Thr Gly
 370 375 380
 Trp Arg Gly Gly His Val Val Glu Gly Leu Ala Gly Glu Leu Glu Gln
 385 390 395 400
 Leu Arg Ala Arg Leu Glu His His Pro Gln Gly Gln Arg Glu Pro Gly
 405 410 415
 Ser Gly His His His His His His Glu Phe Leu Val Pro Arg Gly Ser
 420 425 430
 Met Asp Pro Cys Val Lys Cys Lys Val Ala Pro Arg Asn Trp Lys Val
 435 440 445
 Lys Asn Lys His Leu Arg Ile Tyr Asn Met Cys Lys Thr Cys Phe Asn
 450 455 460
 Asn Ser Ile Asp Ile Gly Asp Asp Thr Tyr His Gly His Asp Asp

-continued

465 470 475

<210> SEQ ID NO 39
 <211> LENGTH: 47
 <212> TYPE: PRT
 <213> ORGANISM: Artificial Sequence
 <220> FEATURE:
 <223> OTHER INFORMATION: Selected peptide

<400> SEQUENCE: 39

Met Asp Pro Cys Val Lys Cys Lys Val Ala Pro Arg Asn Trp Lys Val
 1 5 10 15

Lys Asn Lys His Leu Arg Ile Tyr Asn Met Cys Lys Thr Cys Phe Asn
 20 25 30

Asn Ser Ile Asp Ile Gly Asp Asp Thr Tyr His Gly His Asp Asp
 35 40 45

<210> SEQ ID NO 40
 <211> LENGTH: 6544
 <212> TYPE: DNA
 <213> ORGANISM: Artificial Sequence
 <220> FEATURE:
 <223> OTHER INFORMATION: plasmid

<400> SEQUENCE: 40

atccggatat agttcctcct ttcagcaaaa aaccctcaa gaccggtta gagggcccaa 60
 ggggttatgc tagttattgc tcagcgggtg cagcagccaa ctcagcttcc tttcgggctt 120
 tgttagcagc cggatctcag tgggtggtg ggtggtgctc gagtgcgcc gcaagcttca 180
 gctgcgaagc ttattagaat tcgtgatgat ggtgatggtg accggatcct ggttcacggt 240
 gacottgtgg gtgatgtcct agtcgtgcac gaagttgttc aagtcccca gccagtcctt 300
 caacaacgtg tccacctcgc caaccagtgg tcttctcgtc catccctgag ccgctacctc 360
 ctgagctcga attagtctgc gcgtctttca gggcttcatc gacagtctga cgaccgctgg 420
 cggcgttgat caccgcagta cgcacggcat accagaaagc ggacatctgc gggatgttcg 480
 gcatgatttc acctttctgg gcgthttcca ttgtggcggc aatacgtgga tctttcgcca 540
 actcttcctc gtaagacttc agcgtacgg caccagcgg tttgtcttca ttaaccgctt 600
 ccagaccttc atcagtcagc agatagtttt cgaggaaact ttttccagc tctttgttcg 660
 gactggcggc gtaataacct gcgctcagca cgccaacgaa cggtttgat ggttgaccct 720
 tgaaggtcgc cagtaccggt acaccataat tcactttgct ggtgctgatg ttggaccatg 780
 cccaggggcc gttgatggtc atcgctgttt cgcctttatt aaaggcagct tctgcgatgg 840
 agtaatcggg gtctgcattc atgtgtttgt ttttaatcag gtcaaccagg aagtcagac 900
 ccgctttcgc gccagcgta tccacgcca cgtctttaat gtcgtacttg ccgttttcat 960
 acttgaacgc ataaccctcg tcagcagcaa tcagcggcca ggtgaagtac ggttcttgca 1020
 ggttgaacat cagcgcgctc ttacctttcg ctttcagttc tttatccagc gccgggatct 1080
 ctccccaggt ttttgccggg ttcggcagca gatctttgtt ataatcagc gataaccgctt 1140
 caacagcgat cgggtaagca atcagcttgc cgttgtaacg tacggcatcc caggtaaacg 1200
 gatacagctt gtccctggaac gctttgtccg gggtgatttc agccaacagc ccagattgag 1260
 cgtagccacc aaagcggctg tgtgccaga agataatgac agggccatcg ccagttgccc 1320
 caacctgtgg gaattttctc tccagtttat cgggatgctc aacggtgact ttaattccgg 1380
 tatctttctc gaattttcta ccgacttcag cgagaccggt atagccttca tcgccgttaa 1440

-continued

tccagattac	cagtttacct	tcttcgattc	ccatggtata	tctccttctt	aaagttaaac	1500
aaaattatth	ctagagggga	attggtatcc	gctcacaatt	cccctatagt	gagtcgtatt	1560
aatttcgcgg	gatcgagatc	tcgatcctct	acgccggacg	catcgtggcc	ggcatcaccg	1620
gcgccacag	tgccggtgct	ggcgcctata	tcgccgacat	caccgatggg	gaagatcggg	1680
ctcgccactt	cgggctcatg	agcgcctgtt	tcggcgtggg	tatggtggca	ggccccgtgg	1740
ccgggggact	gttggggcgc	atctccttgc	atgcaccatt	ccttgcggcg	gcggtgctca	1800
acggcctcaa	cctactactg	ggctgcttcc	taatgcagga	gtcgcataag	ggagagcgtc	1860
gagatcccgg	acaccatcga	atggcgcaaa	acctttcgcg	gtatggcatg	atagcgcccg	1920
gaagagagtc	aattcagggt	ggtgaatgtg	aaaccagtaa	cgttatacga	tgctgcagag	1980
tatgccggtg	tctcttatca	gaccgtttcc	cgcggtggtg	accaggccag	ccacgtttct	2040
gcgaaaacgc	gggaaaaagt	ggaagcggcg	atggcggagc	tgaattacat	tccaaccgc	2100
gtggcacaac	aactggcggg	caaacagtgc	ttgctgattg	gcgttgccac	ctccagtctg	2160
gccctgcacg	cgccgtcgca	aattgtcgcg	gcgattaat	ctcgcgccga	tcaactgggt	2220
gccagcgtgg	tggtgtcgat	ggtagaacga	agcggcgtcg	aagcctgtaa	agcggcggtg	2280
cacaatcttc	tcgcgcaacg	cgtcagtggg	ctgatcatta	actatccgct	ggatgaccag	2340
gatgccattg	ctgtggaagc	tgccctgact	aatgttccgg	cgttatttct	tgatgtctct	2400
gaccagacac	ccatcaacag	tattatthtc	tcccatgaag	acggtacgcg	actgggcgtg	2460
gagcatctgg	tcgcatthgg	tcaccagcaa	atcgcgctgt	tagcggggcc	attaagttct	2520
gtctcggcgc	gtctgcgtct	ggctggctgg	cataaatatc	tcaactcgca	tcaaattcag	2580
ccgatagcgg	aacgggaag	cgactggagt	gccatgtccg	gttttcaaca	aaccatgcaa	2640
atgctgaatg	agggcatcgt	tcccactcgc	atgctggttg	ccaacgatca	gatggcgtctg	2700
ggcgcaatgc	gcgccattac	cgagtcgggg	ctgcgcgttg	gtcgggatat	ctcggtagtg	2760
ggatacgacg	ataccgaaga	cagctcatgt	tatatcccgc	cgtaaccac	catcaaacag	2820
gattthtcgc	tgctggggca	aaccagcgtg	gaccgcttgc	tgcaactctc	tcagggccag	2880
gcggtgaag	gcaatcagct	gttgcccgtc	tcactggtga	aaagaaaaac	caccctggcg	2940
cccaatacgc	aaaccgcctc	tccccgcgcg	ttggccgatt	cattaatgca	gctggcacga	3000
caggtthccc	gactggaaa	cgggcagtga	gcgcaacgca	attaatgtaa	gtagctcac	3060
tcattagcca	ccgggatctc	gaccgatgcc	cttgagagcc	ttcaaccag	tcagctcctt	3120
ccggtggggc	cggggatga	ctatcgtcgc	cgcacttatg	actgtcttct	ttatcatgca	3180
actcgtagga	caggtgccgg	cagcgtctct	ggtcattthc	ggcgaggacc	gctthcgtctg	3240
gagcgcgacg	atgatcggcc	tgctcgttgc	ggtattcggg	atcttgcaag	ccctcgtctca	3300
agccttcgtc	actggtccc	ccaccaaacg	tttcggcgag	aagcaggcca	ttatcgcgg	3360
catggcggcc	ccacgggtgc	gcatgatcgt	gctcctgtcg	ttgaggacc	ggctaggctg	3420
gcggggttgc	cttactggtt	agcagaatga	atcaccgata	cgcgagcga	cgtgaagcga	3480
ctgctgctgc	aaaacgtctg	cgacctgagc	aacaacatga	atggtcttct	gthtccgtgt	3540
ttcgtaaagt	ctggaacgc	ggaagtcagc	gcccctgcacc	attatgttcc	ggatctgcat	3600
cgcaggatgc	tgctggctac	cctgtggaac	acctacatct	gtattaacga	agcgtggca	3660
ttgacctga	gtgattthtc	tctggtccc	ccgcatccat	accgccagtt	gthtaccctc	3720
acaacgttcc	agtaaccggg	catgthcatc	atcagtaacc	cgatcgtga	gcatcctctc	3780
tcgthtcatc	ggtatcatta	cccccatgaa	cagaaatccc	ccttacacgg	aggcatcagt	3840

-continued

gaccaaacag gaaaaaacg cccttaacat ggcccgcttt atcagaagcc agacattaac	3900
gcttctggag aaactcaacg agctggacgc ggatgaacag gcagacatct gtgaatcgct	3960
tcacgaccac gctgatgagc ttacccgagc ctgcctcgcg cgtttcggtg atgacgggta	4020
aaacctctga cacatgcagc tcccggagac ggtcacagct tgtctgtaag cggatgccgg	4080
gagcagacaa gcccgtcagg gcgcgtcagc ggggtgtggc ggggtgcggg gcgcagccat	4140
gacccagtca cgtagcgata gcggagtgta tactggctta actatgcggc atcagagcag	4200
attgtactga gagtgcacca tatatgcggt gtgaaatacc gcacagatgc gtaaggagaa	4260
aataccgcat caggcgtctc tccgcttcct cgctcactga ctgctgcgc tcggctcgttc	4320
ggctgcggcg agcggatca gctcactcaa aggcggtaat acggttatcc acagaatcag	4380
gggataacgc aggaaagaac atgtgagcaa aaggccagca aaaggccagg aaccgtaaaa	4440
aggccgctgt gctggcgttt ttccataggc tccgcccccc tgacgagcat cacaaaaatc	4500
gacgctcaag tcagaggtgg cgaaaccoga caggactata aagataccag gcgtttcccc	4560
ctggaagctc cctcgtgcgc tctcctgttc cgaccctgcc gcttaccgga tacctgtccg	4620
cctttctccc ttcgggaagc gtggcgttt ctcatagctc acgctgtagg tatctcagtt	4680
cggtgtaggt cgttcgctcc aagctgggct gtgtgcacga acccccgtt cagcccagcc	4740
gctgcgcctt atccggtaac tatcgtcttg agtccaacc ggtaagacac gacttatcgc	4800
cactggcagc agccactggt aacaggatta gcagagcgag gtatgtaggc ggtgctacag	4860
agttcttgaa gtgggtgcct aactacggct aactagaag gacagtattt ggtatctgcg	4920
ctctgctgaa gccagttacc ttcggaaaa gagttgtag ctcttgatcc ggcaaaaaa	4980
ccaccgctgg tagcgggtgt tttttgttt gcaagcagca gattacgcgc agaaaaaag	5040
gatctcaaga agatccttg atcttttcta cggggctctga cgctcagtgg aacgaaaact	5100
cacgttaagg gattttgttc atgaacaata aaactgtctg cttacataaa cagtaataca	5160
aggggtgta tgagccatat tcaacgggaa acgtcttgct ctaggccgcg attaaattcc	5220
aacatggatg ctgatttata tgggtataaa tgggctcgcg ataatgctcg gcaatcaggt	5280
gcgacaatct atcgattgta tgggaagccc gatgcgccag agttgtttct gaaacatggc	5340
aaaggtagcg ttgccaatga tgttacagat gagatggtoa gactaaactg gctgacggaa	5400
tttatgcctc tcccgacct caagcatttt atccgtactc ctgatgatgc atggttactc	5460
accactgcga tcccgggaa aacagcattc caggtattag aagaatatcc tgattcaggt	5520
gaaaatattg ttgatgcgct ggcagtgctc ctgcgccggt tgcattcgat tctgtttgt	5580
aattgtcctt ttaacagcga tcgctgattt cgtctcgcctc aggcgcaatc acgaatgaat	5640
aacggtttgg ttgatgcgag tgattttgat gacgagcgtg atggctggcc tgttgaacaa	5700
gtctgaaaag aaatgcataa acttttgcca ttctcaccgg attcagctgt cactcatggt	5760
gatttctcac ttgataacct tatttttgac gaggggaaat taataggttg tattgatggt	5820
ggacgagtcg gaatcgcaga ccgataccag gatcttgcca tcctatggaa ctgcctcggg	5880
gagttttctc cttcattaca gaaacggctt tttcaaaaat atggtattga taatcctgat	5940
atgaataaat tgcagtttca tttgatgctc gatgagtttt tctaagaatt aattcatgag	6000
cggatacata tttgaaatgta tttagaaaa taaacaaata ggggttccgc gcacatttcc	6060
ccgaaaagtg ccacctgaaa ttgtaaacgt taatattttg ttaaaattcg cgttaaattt	6120
ttgttaaatc agctcatttt ttaaccaata ggccgaaatc ggcaaatcc cttataaatc	6180

-continued

```

aaaagaatag accgagatag ggttgagtgt tgttccagtt tggaacaaga gtccactatt 6240
aaagaacgtg gactccaacg tcaaaggcgc aaaaaccgtc taccagggcg atggcccact 6300
acgtgaacca tcaccctaata caagtttttt ggggtcagagg tgccgtaaag cactaaatcg 6360
gaaccctaaa gggagccccc gatttagagc ttgacgggga aagccggcga acgtggcgag 6420
aaaggaaggg aagaaagcga aaggagcggg cgctagggcg ctgccaagtg tagcggtcac 6480
gctgcgcgta accaccacac ccgccgcgct taatgcgcgc ctacagggcg cgtcccattc 6540
gccca 6544
    
```

```

<210> SEQ ID NO 41
<211> LENGTH: 426
<212> TYPE: PRT
<213> ORGANISM: Artificial Sequence
<220> FEATURE:
<223> OTHER INFORMATION: designed protein
    
```

<400> SEQUENCE: 41

```

Met Gly Ile Glu Glu Gly Lys Leu Val Ile Trp Ile Asn Gly Asp Lys
 1           5           10          15
Gly Tyr Asn Gly Leu Ala Glu Val Gly Lys Lys Phe Glu Lys Asp Thr
          20          25          30
Gly Ile Lys Val Thr Val Glu His Pro Asp Lys Leu Glu Glu Lys Phe
          35          40          45
Pro Gln Val Ala Ala Thr Gly Asp Gly Pro Asp Ile Ile Phe Trp Ala
          50          55          60
His Asp Arg Phe Gly Gly Tyr Ala Gln Ser Gly Leu Leu Ala Glu Ile
          65          70          75          80
Thr Pro Asp Lys Ala Phe Gln Asp Lys Leu Tyr Pro Phe Thr Trp Asp
          85          90          95
Ala Val Arg Tyr Asn Gly Lys Leu Ile Ala Tyr Pro Ile Ala Val Glu
          100         105         110
Ala Leu Ser Leu Ile Tyr Asn Lys Asp Leu Leu Pro Asn Pro Pro Lys
          115         120         125
Thr Trp Glu Glu Ile Pro Ala Leu Asp Lys Glu Leu Lys Ala Lys Gly
          130         135         140
Lys Ser Ala Leu Met Phe Asn Leu Gln Glu Pro Tyr Phe Thr Trp Pro
          145         150         155         160
Leu Ile Ala Ala Asp Gly Gly Tyr Ala Phe Lys Tyr Glu Asn Gly Lys
          165         170         175
Tyr Asp Ile Lys Asp Val Gly Val Asp Asn Ala Gly Ala Lys Ala Gly
          180         185         190
Leu Thr Phe Leu Val Asp Leu Ile Lys Asn Lys His Met Asn Ala Asp
          195         200         205
Thr Asp Tyr Ser Ile Ala Glu Ala Ala Phe Asn Lys Gly Glu Thr Ala
          210         215         220
Met Thr Ile Asn Gly Pro Trp Ala Trp Ser Asn Ile Asp Thr Ser Lys
          225         230         235         240
Val Asn Tyr Gly Val Thr Val Leu Pro Thr Phe Lys Gly Gln Pro Ser
          245         250         255
Lys Pro Phe Val Gly Val Leu Ser Ala Gly Ile Asn Ala Ala Ser Pro
          260         265         270
Asn Lys Glu Leu Ala Lys Glu Phe Leu Glu Asn Tyr Leu Leu Thr Asp
          275         280         285
Glu Gly Leu Glu Ala Val Asn Lys Asp Lys Pro Leu Gly Ala Val Ala
    
```

-continued

290	295	300
Leu Lys Ser Tyr Glu	Glu Glu Leu Ala Lys Asp	Pro Arg Ile Ala Ala
305	310	315 320
Thr Met Glu Asn Ala	Gln Lys Gly Glu Ile Met Pro Asn Ile Pro Gln	
	325	330 335
Met Ser Ala Phe Trp Tyr Ala Val Arg Thr Ala Val Ile Asn Ala Ala		
	340	345 350
Ser Gly Arg Gln Thr Val Asp Glu Ala Leu Lys Asp Ala Gln Thr Asn		
	355	360 365
Ser Ser Ser Gly Gly Ser Gly Ser Gly Met Asp Glu Lys Thr Thr Gly		
	370	375 380
Trp Arg Gly Gly His Val Val Glu Gly Leu Ala Gly Glu Leu Glu Gln		
	385	390 395 400
Leu Arg Ala Arg Leu Glu His His Pro Gln Gly Gln Arg Glu Pro Gly		
	405	410 415
Ser Gly His His His His His His Glu Phe		
	420	425

What is claimed is:

1. A peptide which binds streptavidin with a dissociation constant less than 10 μ M and comprises an amino acid sequence having at least 80% identity to the first 38 amino acids of SEQ ID NO:25, wherein said peptide is not disulfide bonded or cyclized.

2. A peptide which binds streptavidin with a dissociation constant less than 10 μ M and comprises an amino acid sequence having at least 80% identity to the first 38 amino acids of SEQ ID NO:25, wherein the amino acid sequence of said peptide does not contain an HPQ, HPM, HPN, or HQP motif.

3. A peptide which binds streptavidin with a dissociation constant less than 23 nM and comprises an amino acid sequence having at least 80% identity to the first 38 amino acids of SEQ ID NO:25.

4. The peptide of claim 1 or 2, wherein said dissociation constant is less than 5 μ M.

5. The peptide of claim 1 or 2, wherein said dissociation constant is less than 1 μ M.

6. The peptide of claim 5, wherein said dissociation constant is less than 100 nM.

7. The peptide of claim 6, wherein said dissociation constant is less than 50 nM.

8. The peptide of claim 3, wherein said dissociation constant is less than 10 nM.

9. The peptide of claim 8, wherein said dissociation constant is less than 5 nM.

10. A fusion protein comprising a protein of interest covalently linked to:

(a) a peptide which binds streptavidin with a dissociation constant less than 10 μ M and comprises an amino acid sequence having at least 80% identity to the first 38 amino acids of SEQ ID NO:25, wherein said peptide is not disulfide bonded or cyclized;

(b) a peptide which binds streptavidin with a dissociation constant less than 10 μ M and comprises an amino acid

25

sequence having at least 80% identity to the first 38 amino acids of SEQ ID NO:25, wherein said peptide does not contain an HPQ, HPM, HPN, or HQP motif; or

(c) a peptide which binds streptavidin with a dissociation constant less than 23 nM and comprises an amino acid sequence having at least 80% identity to the first 38 amino acids of SEQ ID NO:25.

11. The fusion protein of claim 10, wherein said peptide is attached to the amino terminus or the carboxy terminus of said protein of interest, or wherein said peptide is positioned between the amino and carboxy termini of said protein of interest.

12. The fusion protein of claim 10, wherein said peptide is linked to said protein of interest by a linker comprising a protease-sensitive site.

13. The peptide of claim 1, wherein said peptide comprises at least the first 38 amino acids of SEQ ID NO:25.

14. The peptide of claim 1, wherein said peptide has at least 90% sequence identity to SEQ ID NO:25.

15. The peptide of claim 1, wherein said peptide has at least 95% sequence identity to SEQ ID NO:25.

16. The peptide of claim 2, wherein said peptide has at least 90% sequence identity to SEQ ID NO:25.

17. The peptide of claim 2, wherein said peptide has at least 95% sequence identity to SEQ ID NO:25.

18. The peptide of claim 3, wherein said peptide has at least 90% sequence identity to SEQ ID NO:25.

19. The peptide of claim 3, wherein said peptide has at least 95% sequence identity to SEQ ID NO:25.

20. The peptide of claim 10, wherein said peptide has at least 90% sequence identity to SEQ ID NO:25.

21. The peptide of claim 10, wherein said peptide has at least 95% sequence identity to SEQ ID NO:25.

* * * * *