

Stardust Entry: Landing and Population Hazards in Mission Planning and Operations

Jeffrey Tooley* and Dan Lyons†

California Institute of Technology, Jet Propulsion Laboratory, 4800 Oak Grove Drive, Pasadena CA 91109

Prasun Desai‡

NASA Langley Research Center, 1 North Dryden Rd., MS 489, Hampton, VA 23681-2199

and

Geoffrey.G.Wawrzyniak §

Purdue University, School of Aeronautics & Astronautics, Grissom Hall, West Lafayette, IN 47907

The 385 kg Stardust mission was launched on Feb 7, 1999 on a mission to collect samples from the tail of comet Wild 2 and from interplanetary space. Stardust returned to Earth in the early morning of January 15, 2006. The sample return capsule landed in the Utah Test and Training Range (UTTR) southwest of Salt Lake City. Because Stardust was landing on Earth, hazard analysis was required by the National Aeronautics and Space Administration, UTTR, and the Stardust Project to ensure the safe return of the landing capsule along with the safety of people, ground assets, and aircraft. This paper focuses on the requirements affecting safe return of the capsule and safety of people on the ground by investigating parameters such as probability of impacting on UTTR, casualty expectation, and probability of casualty. This paper introduces the methods for the calculation of these requirements and shows how they affected mission planning, site selection, and mission operations. By analyzing these requirements before and during entry it allowed for the selection of a robust landing point that met all of the requirements during the actual landing event.

Nomenclature

A_c	=	casualty area
C	=	criterion
DoD	=	Department of Defense
E_c	=	casualty expectation
GB	=	Green Button
NASA	=	National Aeronautics and Space Administration
P	=	population count
P_c	=	probability of casualty
PI	=	probability of impact
RC	=	reduced criterion
R	=	reliability
SRC	=	Sample Return Capsule
TCM	=	Trajectory Correction Maneuver

* Engineer, Entry, Descent and Landing Aero-Applications Group, M/S 301-220G, AIAA member.

† Sr. Engineer, Entry, Descent and Landing Aero-Applications Group, M/S 301-220G, AIAA member.

‡ Sr. Engineer, Exploration Systems Engineering Branch, M/S 489, and AIAA Associate Fellow.

§ Ph.D. Student, Purdue University.

I. Introduction

THE 385 kg Stardust mission was launched on Feb 7, 1999 on a mission to collect samples from the tail of comet Wild 2 and from interplanetary space. Stardust returned to Earth with its cosmic booty in the early morning of January 15, 2006. The 46 kg and 0.81 m diameter sample return capsule landed in the Utah Test and Training Range (UTTR) southwest of Salt Lake City. Figure 1 shows UTTR in dark green, the final GO/NO-GO decision 99% landing ellipse in magenta, and the predicted nominal entry ground track in red. Because Stardust was landing on Earth, hazard analysis was required by the National Aeronautics and Space Administration (NASA), UTTR, and the Stardust Project to ensure the safe return of the landing capsule along with the safety of people, ground assets, and aircraft. This paper focuses on the requirements affecting safe return of the capsule and safety of people on the ground. These requirements were placed on range safety parameters such as probability of impacting in certain areas, landing location, casualty expectation (E_c), and probability of casualty (P_c). These requirements had to be met for both successful and failed entry scenarios before Stardust could be cleared for landing. Section 2 describes the requirements imposed on the Stardust landing ellipse. Section 3 delves into the successful and failed entry scenarios upon which the requirements were placed. Section 4 describes how to calculate the parameters of impact probability, casualty expectation, and probability of casualty. Section 5 introduces the mission analysis completed to establish hazard sensitivity to the selected target. Section 6 shows how the hazard calculations were integrated into real-time GO/NO-GO entry decisions for Stardust and also shows the results for the final ellipses.

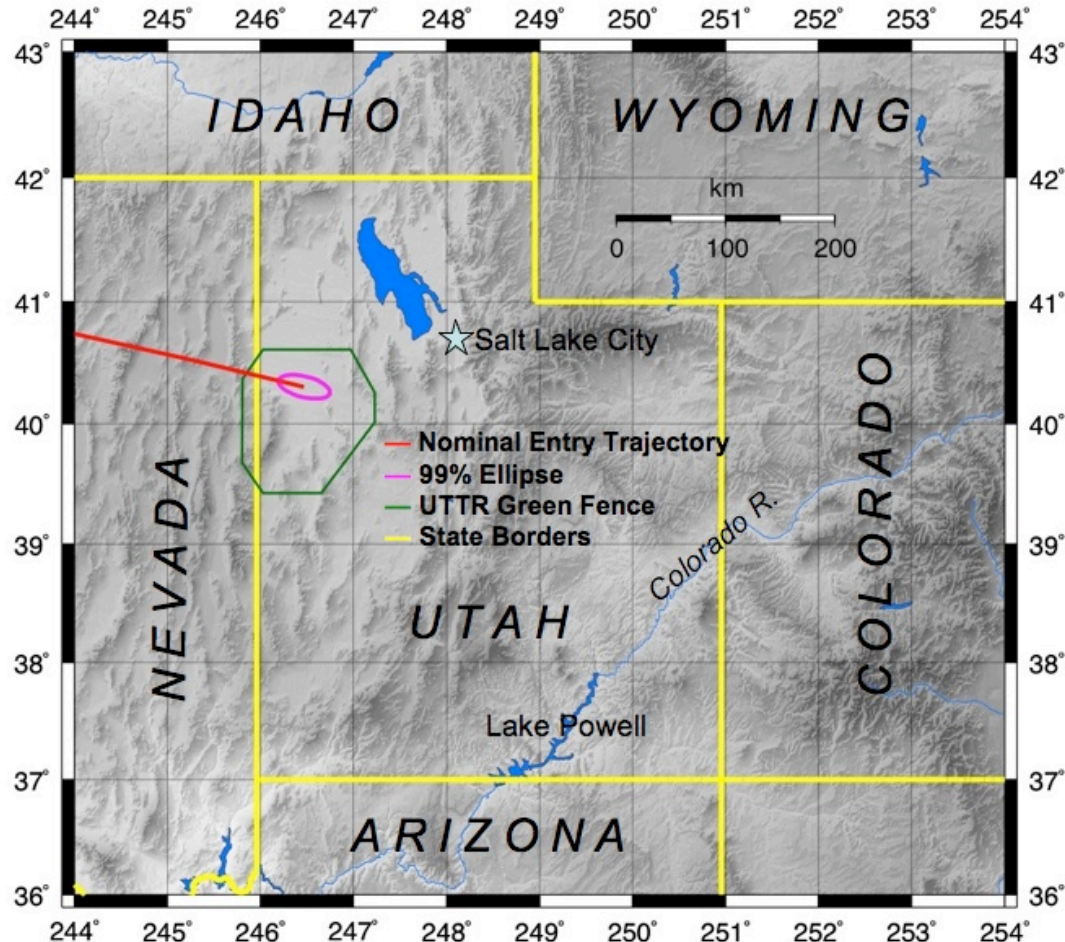


Figure 1. Illustration of Utah Test and Training Range with 99% Landing Ellipse and Entry Trajectory

II. Mission Hazard Requirements

It is an interesting anecdote that the mission requirements before Stardust was launched were only loosely established and changed over time after launch. Although there was flexibility in the landing location, the landing azimuth would have been more difficult to change if there was a glaring violation of the hazard requirements. The landing azimuth turned out to be acceptable, although it did limit the possible landing locations. This situation of requirements changing after launch is less likely to occur for future missions landing at UTTR because of the history established by Stardust and Genesis (Ref. 1), a mission that landed at UTTR a year and a half before Stardust.

The mission requirements levied on Stardust by NASA, UTTR, and the Stardust Project are shown in Table 1 (Ref. 2). This table does not represent all of the requirements imposed on the Stardust entry, but these do represent what was determined to be the most important or highest risk criteria. These were derived from the fuller set of requirements outlined in Ref. 3 and 4. During Earth return operations “Green Button” meetings (occurring at Entry -21.5 hours and Entry -6.5 hours) were held to review whether these requirements were met. These. The Green Button was a symbolic button that had to be “pushed” to enable Earth return. In general, a violation of one of the requirements at a Green Button meeting led to a NO-GO landing decision, however, in some cases discretion was given to the project manager (PM DISCRETION) or a pre-determined anomaly panel (ANOMALY PANEL) as to whether Stardust was cleared to land. Operationally, these requirements were also monitored weeks before the approach and not just at these two times. For mission planning and acquiring approval for targeting Earth, the requirements were analyzed well in advance of the landing. A close-up of the landing area of UTTR is shown in Fig. 2 and will be referenced for some of the requirements. The requirements are all based on the existence of a statistical ensemble of landing points. These landing points were computed from a Monte Carlo analysis of the entry, descent, and landing scenario and were statistically reduced to a bivariate normal landing ellipse. This ellipse is defined by a longitude/latitude mean landing point, an ellipse azimuth (measured clockwise from due north), and 99% crossrange and downrange ellipse axes. More detail is given on the computation of this ellipse in Ref. 5.

Requirements 1.1 through 1.8 set limits for the casualty expectation and probability of casualty for a successful landing scenario. As a quick introduction to the terms, casualty expectation (E_c) is the number of estimated casualties of an entry event, and probability of casualty (P_c) is the probability of an entry event injuring an individual. More background and description of these terms is given in Section IV. In the requirements casualty expectation is noted as a “collective” risk with units of people, and probability of casualty is noted as an “individual” probability with no units. The denotation of “public” or “mission” refers to the population database used. People who are stationed to support the mission (“mission”) accept more risk, and people who are not involved in the mission (“public”) accept less risk. For each parameter, there is a NASA and a UTTR requirement because the requirements levied and the population databases approved by each organization are different.

Requirements 1.9 through 1.16 are the same requirements as 1.1 through 1.8, but for a scenario where the vehicle has failed. Because these scenarios are less likely to occur than successful ones, the nominal failure scenario criterion from 1.1 to 1.8 have been relaxed (increased) to reflect a 94% spacecraft reliability. The relationship between the relaxed criterion (RC), the original criterion (C), and the reliability (R) is shown in Eq. 1.

$$RC = \frac{C}{1 - R} \quad (1)$$

Because multiple failure modes exist, the Stardust Project made the conservative assumption that every failure mode must meet this relaxed criterion. Practically, this meant the worst case E_c or P_c is used from the array of failure modes and this is the value compared to the requirement. The less conservative alternative to this approach would be to assign a failure probability to each failure mode, and then sum the weighted results.

Requirement 1.17 states that the mean landing points must be outside of designated Dugway keepout zones shown in magenta in Fig. 2. These are used to represent major installations on UTTR in a populated area called Dugway. Requirement 2.1 states that 95% of the landing points must be inside the Green Fence. The Green Fence represents the border of UTTR with a 2.5 mile offset and is shown in dark green in Fig. 2. Some leeway is given with this requirement allowing the ANOMALY PANEL to have some discretion if the nominal ellipse’s probability of impact is between 75% and 95% inside the Green Fence. Requirement 3.1 forces the entry flight path angle to be within the stated ranges. This requirement is the only entry, descent, and landing criterion that does not relate directly to hazard analysis and is just shown for completeness (see Ref. 5 for more detail). Requirement 4.1 forces the mean landing point to be inside the orange ellipses in Fig. 2. The ellipses are based on a pre-determined 3 and 6-sigma navigation error ellipse centered at the target. The area between the 3 and 6-sigma ellipse became known as the “warning track.”

Table 1. Hazard Requirements

	Criterion
Human Safety – Successful Entry	
1.1 Landing points meet UTTR Pc, public individual	< 1e-7
1.2 Landing points meet UTTR Ec, public collective (people)	< 3e-5
1.3 Landing points meet UTTR Pc, mission individual	< 3e-6
1.4 Landing points meet UTTR Ec, mission collective (people)	< 3e-4
1.5 Landing points meet NASA Pc, public individual	< 1e-6
1.6 Landing points meet NASA Ec, public collective (people)	< 1e-4
1.7 Landing points meet NASA Pc, mission individual	< 1e-5
1.8 Landing points meet NASA Ec, mission collective (people)	< 3e-4
Human Safety – Failed Entry	
1.9 Landing points meet UTTR Pc, public individual	< 1.67e-6
1.10 Landing points meet UTTR Ec, public collective (people)	< 5e-4
1.11 Landing points meet UTTR Pc, mission individual	< 5e-5
1.12 Landing points meet UTTR Ec, mission collective (people)	< 5e-3
1.13 Landing points meet NASA Pc, public individual	< 1.67e-5
1.14 Landing points meet NASA Ec, public collective (people)	< 1.67e-3
1.15 Landing points meet NASA Pc, mission individual	< 1.67e-4
1.16 Landing points meet NASA Ec, mission collective (people)	< 5e-3
Property Damage	
1.17 Center of landing dispersion is outside of all 1 nmi radius UTTR property zones	Yes
Landing Site	
2.1 Landing points in Acceptable Landing Region above 95% - GO below 75% - NO GO between above - ANOMALY PANEL	>95%
SRC Capability	
3.1 Entry Flight Path Angle within [-8.05°, -8.35°] to 99% - GO beyond [-7.83°, -8.57°] to 99% - NO GO between above - ANOMALY PANEL	> 99% > 99%
Warning Track	
4.1 If center of landing dispersion is: within 3-sigma NAV ellipse – GO between 3- and 6-sigma NAV ellipse - PM DISCRETION beyond 6-sigma NAV ellipse – ANOMALY PANEL	GO

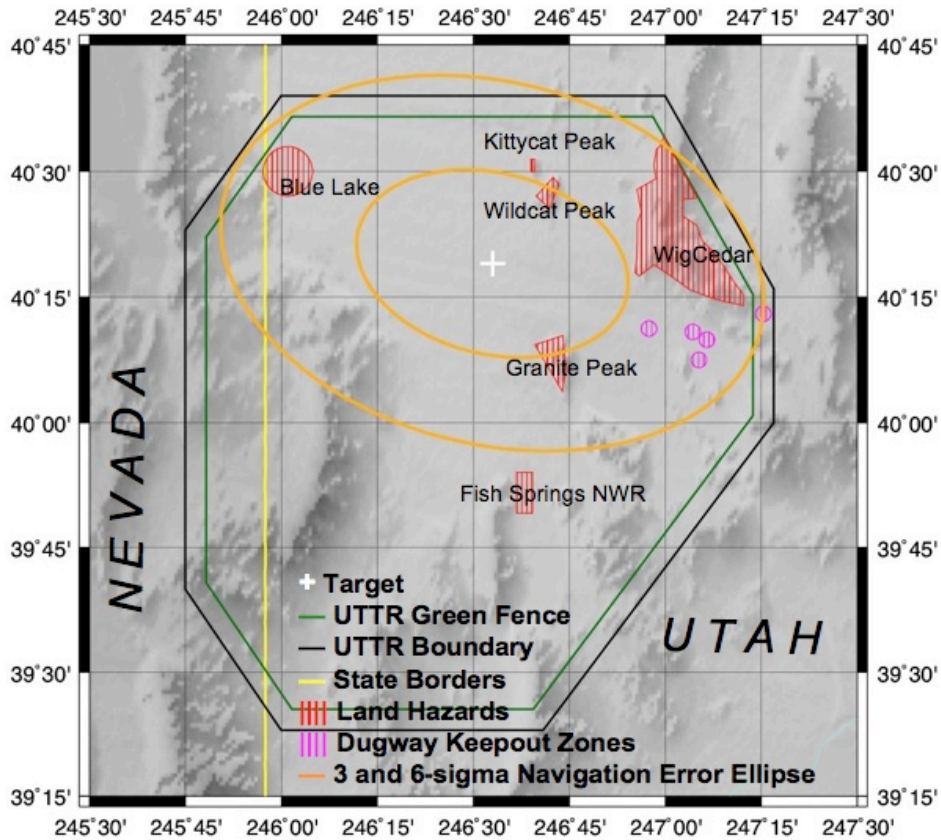


Figure 2. Close-up of UTTR with Land Hazards, the Target, and Keep-out Zones

III. Entry Scenarios

A. Timeline

In order to describe the successful and failed entry scenarios, it is important to understand the sequence of events prior to entry. These events are listed in Table 2.

Table 2. Nominal Timeline for Entry

Time	Event
Entry -31.5 hours	GO/NO-GO Decision for TCM-19
Entry -28 hours	TCM-19 – Stardust is targeted to eastern portion of UTTR
Entry -21 hours	Green Button 1
Entry -12 hours	Execute Contingency TCM-19A/B
Entry -6.5 hours	Green Button 2
Entry -4 hours	Capsule Release or Divert
Entry +0	Entry Interface
Entry +2:13 minutes	Drogue Chute Deploy
Entry +8:04 minutes	Main chute deploy
Entry +14:44 minutes	Ground Landing

TCM-19 (Trajectory Correction Maneuver) is listed as the first event, because it is the maneuver that points Stardust to land close to UTTR. Before this Stardust is aimed to skip through Earth’s upper atmosphere. For more detail on the entry trajectory or the Earth approach trajectory see Ref. 5 and 6, respectively. The Green Button 1 and 2 mark meetings where a GO/NO-GO decision to continue with entry is made. If Stardust is NO-GO, the spacecraft performs an abort burn to a heliocentric orbit to come back to Earth for another attempt approximately 4 years later.

Once the space return capsule is released from the spacecraft bus at Entry-4 hours, there is nothing that can be done to modify the trajectory of the capsule.

B. Successful Scenario

A successful entry scenario is when the sample return capsule lands within the nominal predicted landing ellipse under parachute. The requirements based on a successful landing are evaluated using the nominal landing ellipse computed from a Monte Carlo simulation of the entry trajectory (Ref. 5). The details of how to calculate the impact probability, casualty expectation, and probability of casualty from this ellipse are described in Section IV.

C. Failure Scenarios

Based on analysis of the events timeline in Table 2, failure scenarios that result in an Earth landing ellipse different than the nominal landing ellipse were identified. These include a separation failure or partial separation, an entry system failure, a chute failure, and a TCM-19 partial burn. A failure of the spring separation spin system, which imparted both a spin and a velocity increment to the capsule, can lead to an unstable entry due to a low spin rate or the bus still being attached to the capsule. An entry system failure, which includes failure of the thermal protection system, can lead to an aero-thermal breakup that causes debris to be scattered around the target. A chute failure will result in an intact capsule crash landing close to the target. A partial burn at TCM-19 (that cannot be corrected by a contingency TCM-19A/B or a divert) results in debris landing greater than 1,000 km downrange (southeast) of the target or in a trajectory that skips out of the atmosphere. The downrange distance obtained is dependent on the percentage of TCM-19 that would be completed. All of these failure scenarios, excluding TCM-19, were analyzed at the Green Button meetings. TCM-19 failure was analyzed as a separate analysis discussed in Section V.

D. Failure Debris Impact Location and Ellipse Size

It was desired to group these failure scenarios such that a simple, conservative analysis could bound the possible outcomes. The failure outcomes were qualified in terms of the impacting debris and the location and size of the impacting ellipse.

There are two possible debris impact scenarios. One is an impact where the failure does not lead to a breakup and the entire vehicle hits the ground in one piece. The other has the vehicle breaking up during entry (due to aero-thermal forces) and spreading its debris around the targeted landing site. For this scenario a significant amount of work was performed to predict the vehicle breakup sequence (Ref. 7). If breakup does occur, only the 0.81 m diameter heatshield and nine tungsten ballasts could survive to impact. As a note, eight of the ballasts are in the nose of the capsule (~0.212 kg cubes with ~2.23 cm sides) and one ballast is attached to the avionics deck (~0.25 kg cube with ~2.5 cm sides). The reason for the survival of the heatshield is due to its heat-resistant design. The tungsten ballasts survive because of their extremely high melting temperature (3643 K). It is interesting that the tungsten was chosen as the ballast material because of its high density, and it was not needed for its high melting temperature properties. It is possible that if rigorous aero-thermal breakup and hazard analysis was performed during the pre-launch trajectory design it might have had an effect on the material that was chosen for the ballast. As it turned out the ballast debris caused particular concern in meeting the failure scenario hazard requirements. This risk mode could have been eliminated if an a priori breakup analysis (showing that another ballast material would burn up during entry) was completed during capsule design.

Depending on the debris impact scenario and the separation delta velocity imparted to the capsule, the mean landing locations and ellipse size can vary quite a bit. An analysis was done to establish bounds for where the intact capsule or surviving debris would land in the event of a failure. Combinations of the following scenarios were run to impact: intact landing, vehicle breakup, a separation system failure (0% release), and a perfectly performing separation system (100% release). Deck and nose ballast are called out separately because the nose ballasts are modeled to break off the capsule first and thus fly further downrange. Downrange is in the southeast (SE) direction, and uprange is in the northwest (NW) direction.

Table 3 shows the impact locations relative to the mean of the nominal ellipse. The breakup scenarios result in the heatshield landing up to 60 km uprange of the nominal landing and the ballast landing as much as 168 km downrange. This variation is because the tumbling hypersonic continuum ballistic coefficient for the heatshield alone is ~31 kg/m², for the ballast it is ~275 kg/m², while for an intact tumbling capsule it is ~105 kg/m².

Table 3. Failure scenarios distance to the target

Breakup scenario	Release	Debris	Distance from mean debris landing point to mean nominal landing point
Survives entry	0%	Intact capsule	Downrange (SE) 30 km
Burn-up & Breakup	0%	Deck Ballast debris	Downrange (SE) 63 km
		Nose Ballast debris	Downrange (SE) 168 km
		Heatshield debris	Uprange (NW) 31 km
Survives entry	100%	Intact capsule	0 km
Burn-up & Breakup	100%	Deck Ballast debris	Downrange (SE) 31 km
		Nose Ballast debris	Downrange (SE) 131 km
		Heatshield debris	Uprange (NW) 59 km

In order to mimic these failures, the debris ellipses were moved uprange and downrange along the incoming flight azimuth to represent possible debris landing locations. Based on Table 3, ellipses due to the heatshield or the intact capsule were moved uprange 70 km (59 km + 11 km margin) in steps of 5 km. This movement is shown as red dots in Figure 3 and was called the heatshield debris line. The ballast ellipses were moved downrange by 200 km (168 km + 32 km margin) in steps of 5 km. This is shown as blue dots in Figure 3 and is called the ballast debris line. Margins of 11 km and 32 km were included for conservatism based on engineering judgment and having numbers divisible by the 5 km step size in the hazard analysis. An argument could have been made that only the deck ballasts land close to the target (downrange < 100 km), and the nose ballasts always land far downrange (> 100 km). For conservatism, it was assumed any of the ballasts could land between 0 and 200 km from the target.

For the heatshield debris line the same size ellipse as the nominal intact capsule ellipse is used. This assumption is based on Monte Carlo analysis that showed the ellipse for the heatshield alone is the same as the ellipse for the entry of the nominal intact capsule ellipse. An example ellipse at one of the analysis points is shown in red in Fig. 3. By using this same ellipse for both the nominal and heatshield ellipse, it saved computational time and complexity. For the ballast ellipse, a separate Monte Carlo was run that used ballast aerodynamics and resulted in a skinnier and longer ellipse. An example of this ellipse is shown in blue in Fig. 3.

At each red or blue dot in Fig. 3, an ellipse of appropriate size centered on the dot was analyzed for E_c and P_c . The maximum E_c or P_c was computed from the uprange array of ellipses and the downrange array of ballast ellipses. For E_c , the two maximum values were then added to get the worst-case value for an entry. For P_c , the maximum of the two maximum values was computed to get the worst-case entry value. This analysis process is in line with the conservative stance espoused in Section II where it was stated the worst-case failure was taken from the array of failure scenarios.

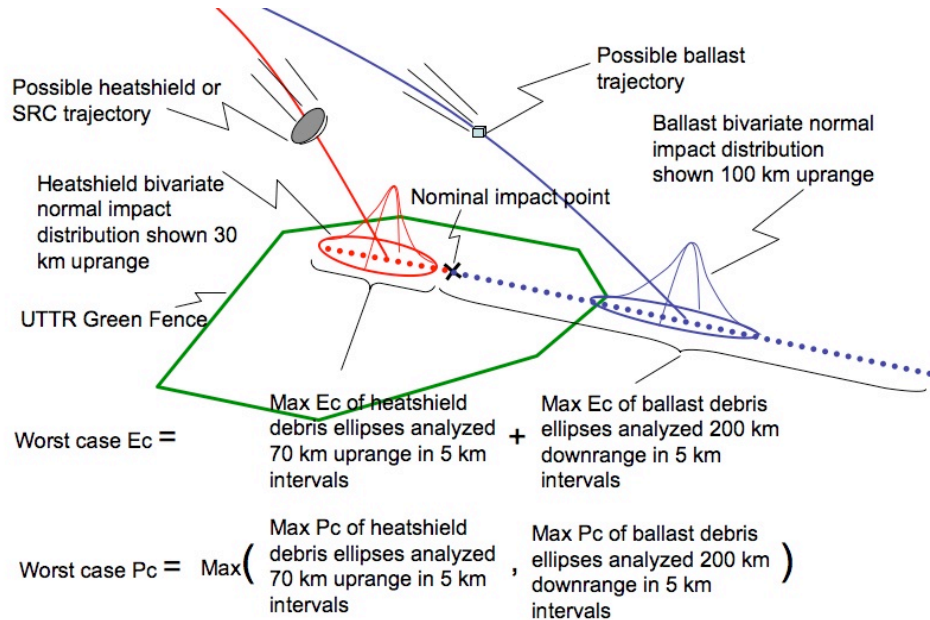


Figure 3. Cartoon of Breakup Scenarios to Compute Worst Case Failure

IV. Calculating Impact Probability, Casualty Expectation, and Probability of Casualty from a Bivariate Normal Ellipse

Once landing ellipses are calculated based on the successful or failed entry scenarios they are fed into the process to calculate impact probabilities, casualty expectation, and probability of casualty for comparison against the requirements. All of the calculations for this process and for reduction of the landing points into ellipses are done with a scriptable hazard evaluation tool developed at the Jet Propulsion Laboratory.

Requirements 1.17 and 4.1 are easily analyzed, because they restrict the location of the mean landing point of the nominal ellipse to be outside of the Dugway Keepout Zones and inside the navigation error ellipses. Success of these criteria is based on comparing the mean landing point to the area in question. The rest of the requirements are computed starting from an impact probability.

A. Probability of Impact

The impact probability for a bivariate normal ellipse landing on the i^{th} area (A_i), also called an area element, can be calculated by integrating the probability density function $N(\sigma_x, \sigma_y, \rho, \mu_x, \mu_y)$ as is shown in Eq. (2).

$$PI_i = \int_{A_i} N(\sigma_x, \sigma_y, \rho, \mu_x, \mu_y) \quad (2)$$

Where σ_x and σ_y are the ellipse standard deviations in a Cartesian coordinate system, ρ is the covariance of the statistical distribution, and μ_x and μ_y are the ellipse means in the Cartesian system. The integral is computed over the area element (A_i) that also must be in the Cartesian system. Typically, for this calculation the area is given in terms of a list of latitude and longitude points. An ellipse is defined by its longitude/latitude mean impact point, ellipse azimuth, and the 99% crossrange and downrange ellipse axes are used to define the ellipses. The hazard evaluation tool has the ability to reconcile all of these inputs into a Cartesian frame and compute the impact probability for an arbitrary area anywhere on the globe. For analysis of Requirement 2.1, Eq. 2 is evaluated by integrating over the entire area within the Green Fence boundary using the nominal landing ellipse as the bivariate normal ellipse.

B. Casualty Area

The casualty area (A_c) is the area within which an unprotected person will be hit by debris. This value is important to assess both casualty expectation and probability of casualty. The casualty area is based on the shape of the debris, the impact state, and the size of the target (which in this case is a person). There are three types of debris being tracked: an intact capsule, the heatshield, and the ballasts. A circle, with radius (r), represents the largest impacting cross sectional area of the heatshield and capsule. The ballasts, which are nearly cubes with a side (s), are represented by a square. To each of these areas a 0.3 m person border (r_p) is added, which represents a person standing up viewed from above. Based on this the casualty areas for a circular projected area and a rectangular projected area are shown in equations (3) and (4), respectively.

$$A_c = N_f I_f \pi (r + r_p)^2 \quad (3)$$

$$A_c = N_f I_f (s + 2r_p)^2 \quad (4)$$

N_f is the number of fragments. For the ballasts this is set to eight and for the intact capsule or heatshield it is set to one. The impact factor (I_f) is a safety factor used to represent debris impact splatter, skid, bounce, ricochet, and cratering effects based on Ref. 8. For conservatism, a value of 2 is chosen for this impact factor (I_f). This value is considered conservative because the debris will be falling nearly vertical when it hits the ground and will have little skid or ricochet. Population sheltering was not used in the calculation of the casualty area. Based on these parameters the casualty area for the intact capsule or the heatshield is 3.75 m² and the casualty area for the eight ballasts is 5.76 m². A decision was made to leave the deck ballast out of the calculation of the ballast casualty area, which reduces the number of ballasts to eight. Assuming that the single deck ballast lands in the same location as the other eight was considered to be unrealistic given the fact that in breakup analysis it always landed much further uprange than the other eight. Adding a ninth ballast would increase the ballast E_c and P_c by 11%.

C. Casualty Expectation and Probability of Casualty

Requirements 1.1 through 1.16 are based on casualty expectation and probability of casualty. E_c and P_c were briefly described in Section II, however, here is a more thorough description of the terms, and a short description of how to compute them from the impact probability in Eq. 2.

Casualty expectation is the number of people estimated to be casualties of an entry event. For our purposes a casualty is defined as someone hit by debris. Someone might ask, “During the Stardust entry how many people are going to be hit by debris?” The answer to this is the casualty expectation. Typically, casualty expectation is much less than one. For example, a casualty expectation of $1e-6$ people means that for every million entries one person will be a casualty. As with all risks, casualty expectation is measured as the probability times a consequence. In our case, the probability is that of landing in a particular area, shown in Eq. 2. The consequence is measured as the population density times the casualty area (A_c). The equation for E_c for an arbitrary area element (A_i) with population (P_i) can be written as Eq. 5.

$$E_{ci} = PI_i A_c \frac{P_i}{A_i} \quad (5)$$

The area element is chosen based on a population database. Because population databases have multiple areas, the total casualty expectation for a single ellipse can be written as a summation of the casualty expectations for all of the area elements as is shown in Eq. 6.

$$E_c = \sum_i E_{ci} \quad (6)$$

The probability of casualty is the probability that at least one person will be a casualty of debris. A person who lives just east of UTTR might ask, “What are my chances of being hit by debris during the Stardust entry?” The answer to this is the probability of casualty for their area. The probability of casualty is only analyzed for area elements that have a population of at least one person, and is written in Eq. 7 as the probability of impacting the area element times the ratio of the casualty area to the area element.

$$P_{ci} = \frac{PI_i A_c}{A_i} \quad (7)$$

The probability of casualty for a single ellipse is analyzed for each area element in the population database. To obtain the value to compare against the requirements Eq. 8 is used for a single ellipse.

$$P_c = \max_i(P_{ci}) \quad (8)$$

D. Population

The last input needed for the calculation of E_c and P_c is the population density for the area elements in Eq. 2 and 5. As was stated in Section II the population databases approved by NASA and UTTR are different. The NASA database contains data for a much larger area, whereas the UTTR database focuses on the immediate area around UTTR. Both UTTR and NASA use the same database to represent the population supporting the mission on UTTR. The NASA approved population is maintained by the Oak Ridge National Laboratory and is called the LandScan database. It is based on Census data, satellite imagery, correlation with roads, and other data sources (Ref. 9). The original database is a 30 arc-second grid, however, it was reduced to 2 arc-minute quadrangles shown in Fig. 4. The population cells in Fig. 4 are plotted with different colors representing population densities. Green, yellow, orange, and red represent high densities (> 100 people/km²). This shows that there is very little population to the west of UTTR, and to the east population increases towards Salt Lake City. The UTTR developed database is shown in Fig. 5. The population cells shown in red have various shapes and range from 1-3500 people. Also in Fig. 5 are two blue population cells that represent the population to support the mission.

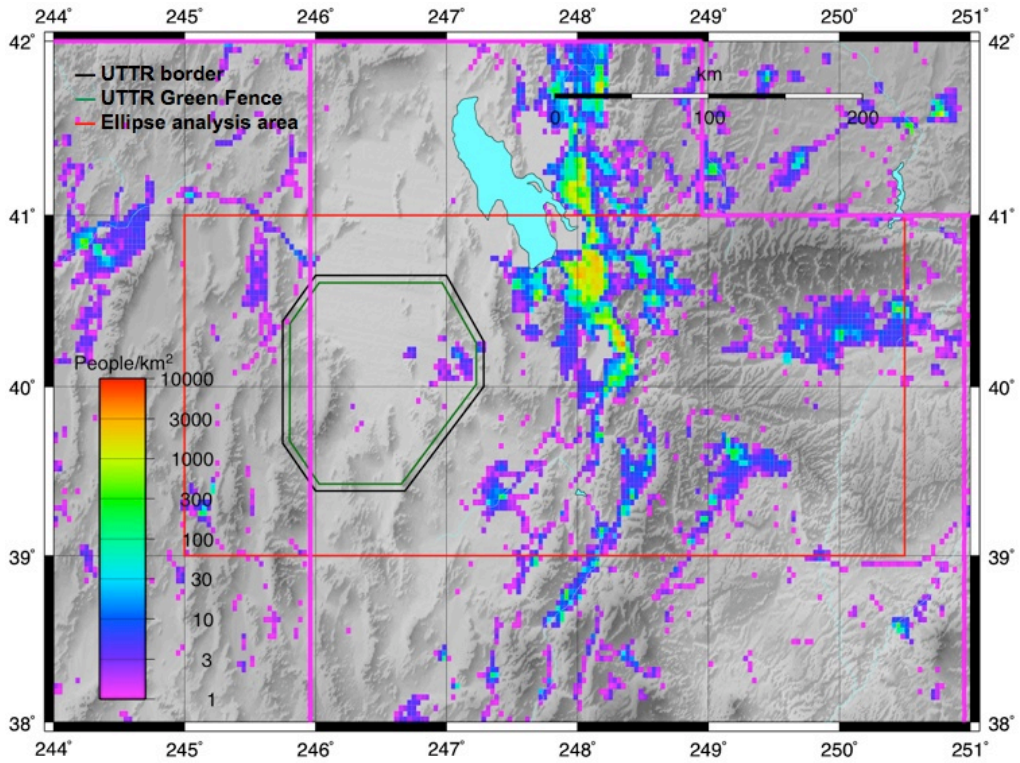


Figure 4. LandScan Population

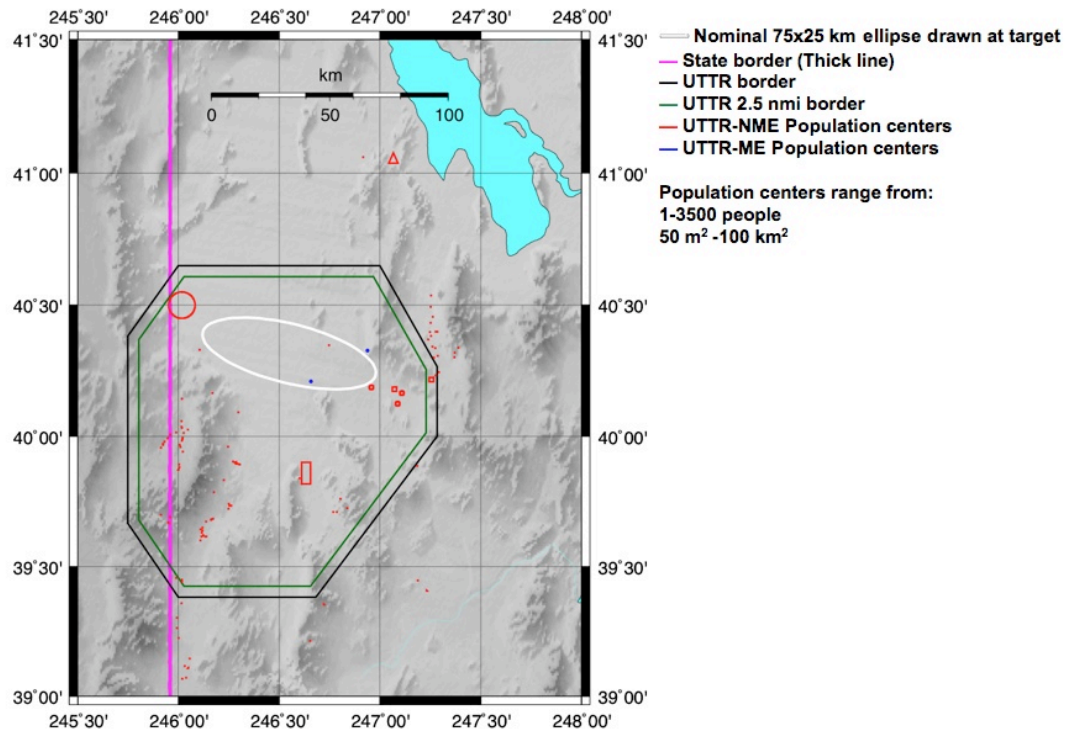


Figure 5. UTTR Population

V. Hazard Analysis in Mission Planning

Three analyses are introduced in this section that helped clear the way for the Stardust landing and selection of a robust targeted impact point. These analyses are the computation of casualty expectation from a TCM-19 failure, the evaluation of the target site based on impact probabilities on UTTR, and casualty expectation risk due to vehicle breakup scenarios.

A. TCM-19 Failure

The failure of TCM-19 had to meet Requirement 1.14 with a casualty expectation of less than 1.67×10^{-3} people. A TCM-19 failure results in debris scattered as far downrange as Oklahoma. Figure 6 shows the movement of the debris impact point track in yellow as a function of the percentage of TCM-19 completed. As more of the burn completes, the further uprange and closer to UTTR the impact track moves. If the less than 53% of TCM-19 is completed, the vehicle skips out of the atmosphere. Also shown in Figure 6 are the nose ballast ellipses for 53%, 66%, 80%, 95%, and 100% completion of TCM-19. The population density data underneath the ground track is also shown.

The analysis to prove that TCM-19 would meet Requirement 1.14 assumed the failure would be distributed uniformly with time, and would occur somewhere along the TCM-19 impact point track. It also assumed that in this scenario the vehicle would breakup because of the incorrect entry flight path angle that would be associated with an incomplete TCM-19. The casualty expectation for the resulting heatshield and ballast debris ellipses integrated over the impact point track was computed as $\sim 2 \times 10^{-4}$ people, which is an order of magnitude below Requirement 1.14. These results were also validated with help from Johnson Space Center and The Aerospace Corporation. Because this requirement was not violated approval was given to execute TCM-19.

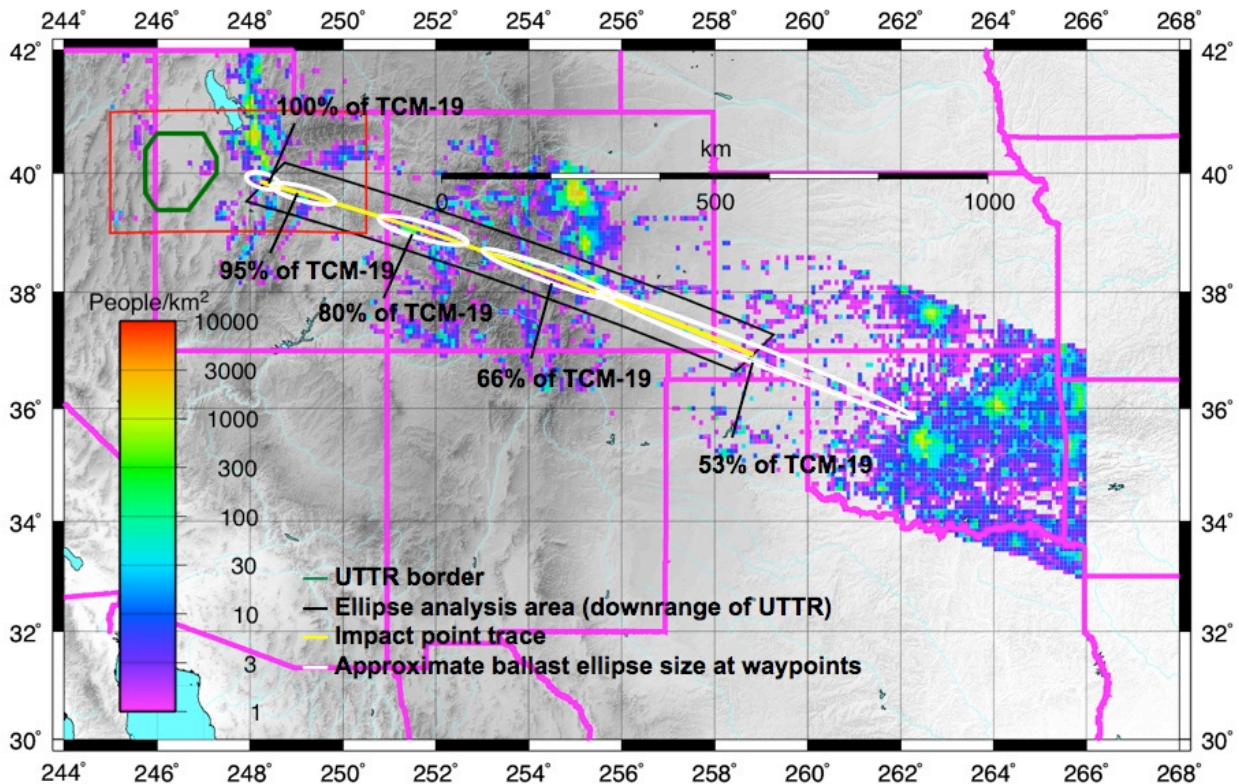
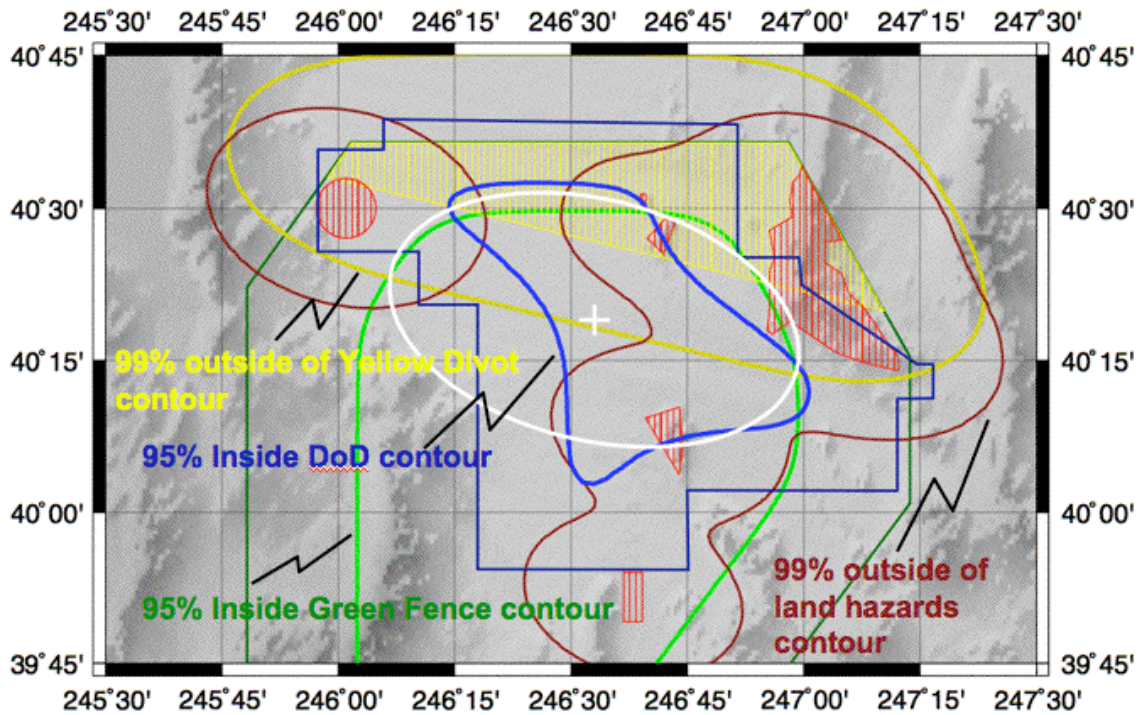


Figure 6. Ballast Impact 99% Ellipses for Partial TCM-19 Ranging from 53-100%

B. Target Site Selection

The target site selection analysis was performed to graphically represent areas to target or avoid based on a nominal 99% ellipse of 76 x 44 km at 104 deg azimuth. This size ellipse was used because at the time of the analysis it was the best prediction of the nominal ellipse. The areas to target were identified by contouring ellipses (Ref. 1). The nominal ellipse was moved throughout UTTR and evaluated for the probability of impacting UTTR, land hazards, Department of Defense (DoD) land, and what was called the Yellow Divot. Contours could then be drawn at the desired impact probability to mark areas where Stardust should target or avoid. As an example, shown in green in Fig. 7 is the contour for a 95% (green) probability of landing inside the Green Fence. If the center of the ellipse was inside the green line, Stardust would have a >95% chance of landing inside the Green Fence, and would meet Requirement 1.17. Therefore, it was desirable to choose a target inside the green line. Land hazards, which were not represented as formal requirements in Table 2, are shown in Fig. 7 as red hash marks. Contours are drawn for a 99% chance of not landing on these hazards. The center of the ellipse was kept outside of these red contours. Another desire was to land on Department of Defense (DoD) land shown in blue in Fig. 7. The 95% impact probability contour for this area is shown as a blue contour. The Yellow Divot, described in Section IIIC, was an undesirable place to land. The Yellow Divot contour shown was calculated to give a 99% chance of landing outside of the Yellow Divot. The white ellipse in Fig. 7 is shown at the targeted landing location of 40.3167°N (40°19'N) geodetic latitude and 246.5500°E (246°33'E) longitude. Figure 7 shows how the target choice balanced the requirements for this size ellipse. The ellipse center is inside the Green Fence (green contour) and DoD contours (blue contour), outside the land hazards contour (red contour), and just on the edge of the Yellow Divot contour (yellow contour). These results were combined with other operational and technical consideration for final choice of the landing site.



Legend
 White Ellipse - 76 x 44 km at 104 deg ellipse
Keep Out Zones
 |||| Land Hazards
 |||| Yellow Divot
Keep In Zones
 — UTTR Green Fence
 — DOD Land

Figure 7: Finding the Sweet Spot at UTTR

C. Risk from Breakup Debris

Requirements 1.10 and 1.14 set the casualty expectation for a vehicle breakup failure scenario. The methodology used for this calculation was established in Section III and is based on debris lines originating at the nominal impact point. It was important to capture how risk from the debris lines changed with the movement of the nominal impact point to ensure there were no areas around the target where a violation of the requirements occurred. Only the downrange ballast debris was analyzed, since there was significantly less population uprange than downrange.

Because the maximum casualty expectation was used from a series of ellipses along a 200 km downrange ballast debris line, the main sensitivity of debris casualty expectation was to crossrange changes. To see this sensitivity, the ballast debris line was moved in a positive and negative crossrange direction from the targeted landing site, as is shown with the arrows in the top half of Fig. 8. Example debris lines are shown in Fig. 8 at the target (green), 27 km NE of the target (red), and 20 km SW (blue) of the target. The value of the casualty expectation was based on LandScan population and a 99% 56 x 6 km ballast debris ellipse. The casualty expectation is shown in the bottom half of Fig. 8 as a function of crossrange. As the debris line moves to the NE (positive crossrange), the casualty expectation increases until at +27 km there is a violation of Requirement 1.14. The debris line for this violation is shown in red on the top half of Fig. 8. This increase in casualty expectation is due to the population increasing as the debris line moves NW. The area where this violation occurs was cut out of the Green Fence and dubbed the Yellow Divot. The Yellow Divot, shown here in yellow, is slightly different than the one in Fig. 7, which was generated based on a stricter Requirement 1.14. The orange contour in the top half of Fig. 8 represents areas where the debris line could not cross into without causing a violation of Requirement 1.14. The +27 km crossrange debris line skirts the edge of this orange contour.

Figure 9 shows results for the same crossrange sensitivity, but uses the UTTR population database. In this scenario population centers just SW of the target called the Dugway population centers were of biggest concern. As can be seen in the bottom half of Fig. 9, for a 99% 45 x 6 km ballast ellipse there is a peak casualty expectation of $2.4e-4$ people at 4 km SW of the target. This value approaches but does not violate Requirement 1.10 of $5e-4$ people. The debris line for this peak is shown as a magenta line on the top half of Fig. 9, and can be seen cutting right through the Dugway populations. A ballast ellipse size of a 20 x 6 km ellipse at 4 km SW of the target would cause a violation of this requirement. The final Green Button 2 ballast ellipse size was 45 x 6 km and -3 km crossrange from the target. Because of the debris ellipse size and location, this requirement caused particular concern during the Green Button meetings. Combining the results of Fig. 9 with the knowledge that the ballast ellipse would not shrink to 20 x 6 km, it was shown the Requirement 1.10 would not be violated. The high risk numbers in Fig. 9 also resulted from the conservative assumption that all of the ballasts could land less than 100 km downrange of the target. The analysis actually showed that only the deck ballast would land in UTTR and all other eight ballasts would land much further downrange. In retrospect, if a casualty area representing only the single deck ballast was used for the ellipses that were less than 50 km downrange, these high results could have been avoided.

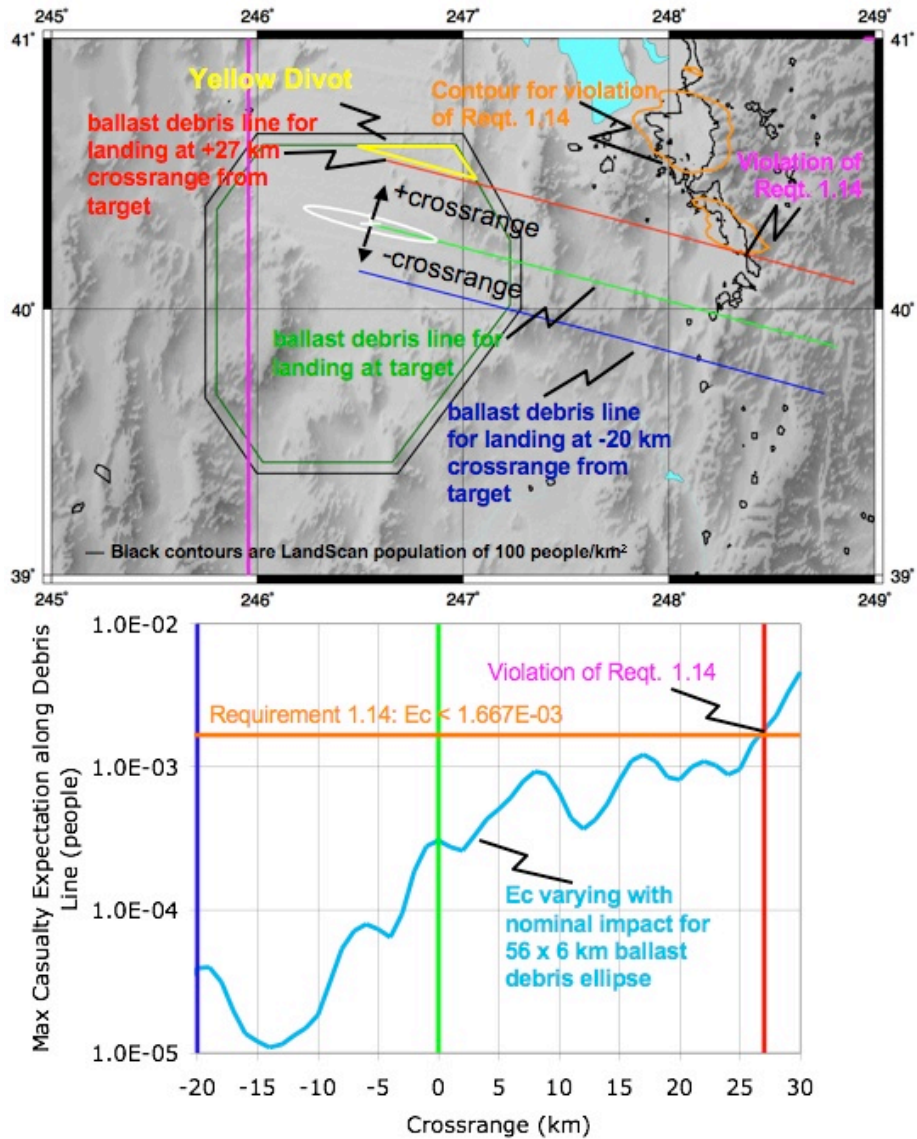


Figure 8: Downrange LandScan Population Hazards Due to Ballast Debris

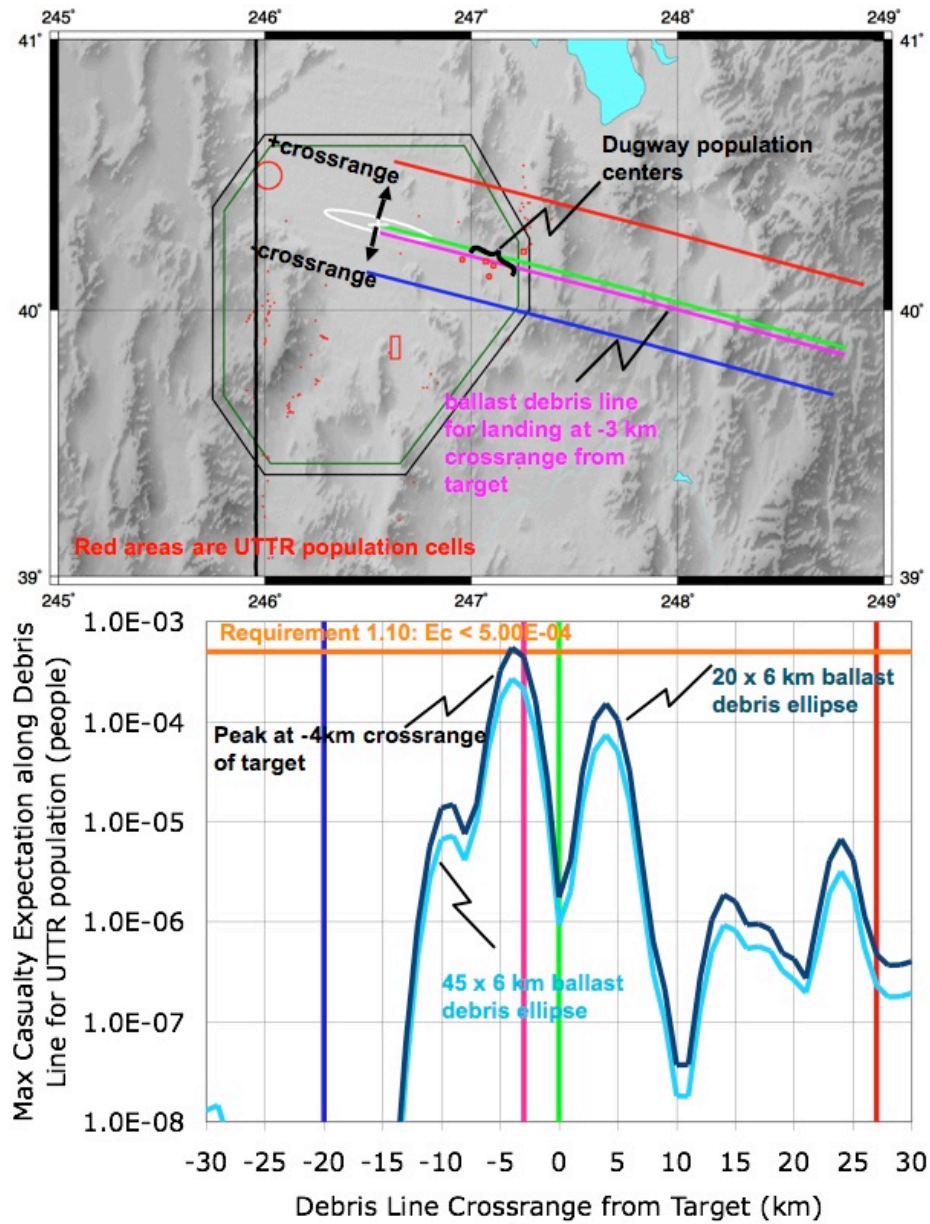


Figure 9: UTTR Population Hazards Due to Ballast Debris

VI. Hazard Analysis in Mission Operations

Green Button meetings 1 and 2 were the two most important times that the hazard analysis was performed. This was because the GO/NO-GO decisions at these events were partly based on the hazard results. Leading up to the Green Button 1 and 2 decisions there was a compressed timeline. The entry, descent, and landing analysts had 1.5 hours to run over 6,000 trajectories, analyze hazards for successful/failed entry scenarios, and compare them to the requirements. Much effort was spent practicing and streamlining this operation.

Table 3 shows the size and location of the Green Button ellipses, and Table 4 shows the requirement results for these ellipses. The center of the Green Button 2 nominal ellipse was only 7 km away from the desired target. The only criteria that came close to a violation was 1.10, due to that ellipse being centered ~3 km in crossrange away from the target. This was near the peak of the UTTR risk as was shown in Section V.

Table 3. Summary of Final Green Button Ellipses

	Green Button #1	Green Button #2
Geodetic latitude	40.3025 deg N	40.3048 deg N
Longitude	246.4845 deg E	246.4653 deg E
99% Ellipse Size	53 km x 19 km at 104 deg	48 km x 19 km at 104 deg

Table 4: Hazard Values for Green Button Decisions

Requirement	Criterion	Green Button #1 (E-21 hr)	Green Button #2 (E-6.5 hr)
Human Safety – Successful Entry			
1.1 Landing points meet UTTR Pc, public individual	< 1e-7	5.28e-12	2.59e-12
1.2 Landing points meet UTTR Ec, public collective (people)	< 3e-5	7.26e-11	1.53e-11
1.3 Landing points meet UTTR Pc, mission individual	< 3e-6	3.75e-10	1.83e-10
1.4 Landing points meet UTTR Ec, mission collective (people)	< 3e-4	2.62e-09	1.28e-09
1.5 Landing points meet NASA Pc, public individual	< 1e-6	6.84e-10	2.82e-10
1.6 Landing points meet NASA Ec, public collective (people)	< 1e-4	4.84e-08	1.46e-08
1.7 Landing points meet NASA Pc, mission individual	< 1e-5	3.75e-10	1.83e-10
1.8 Landing points meet NASA Ec, mission collective (people)	< 3e-4	2.62e-09	1.28e-09
Human Safety – Failure Scenario (a.k.a. Yellow Divot)			
1.9 Landing points meet UTTR Pc, public individual	< 1.67e-6	6.99e-08	7.96e-08
1.10 Landing points meet UTTR Ec, public collective (people)	< 5e-4	2.38e-04	2.71e-04
1.11 Landing points meet UTTR Pc, mission individual	< 5e-5	3.75e-10	1.83e-10
1.12 Landing points meet UTTR Ec, mission collective (people)	< 5e-3	2.62e-09	1.28e-09
1.13 Landing points meet NASA Pc, public individual	< 1.67e-5	6.82e-08	7.53e-08
1.14 Landing points meet NASA Ec, public collective (people)	< 1.67e-3	6.17e-05	6.44e-05
1.15 Landing points meet NASA Pc, mission individual	< 1.67e-4	3.75e-10	1.83e-10
1.16 Landing points meet NASA Ec, mission collective (people)	< 5e-3	2.62e-09	1.28e-09
Property Damage			
1.17 Center of landing dispersion is outside of all 1 nmi radius UTTR property zones	Yes	Yes	Yes
Landing Site			
2.1 Landing points in Acceptable Landing Region above 95% below 75% - NO GO between above - ANOMALY PANEL	>95%	100%	100%
SRC Capability			
3.1 Entry Flight Path Angle within [-8.05°, -8.35°] to 99% beyond [-7.83°, -8.57°] to 99% - NO GO between above - ANOMALY PANEL	> 99% > 99%	100% 100%	100% 100%
Warning Track			
4.1 If center of landing dispersion is: within 3-sigma NAV ellipse – GO between 3- and 6-sigma NAV ellipse - PM DISCRETION beyond 6-sigma NAV ellipse – ANOMALY PANEL	GO	GO	GO

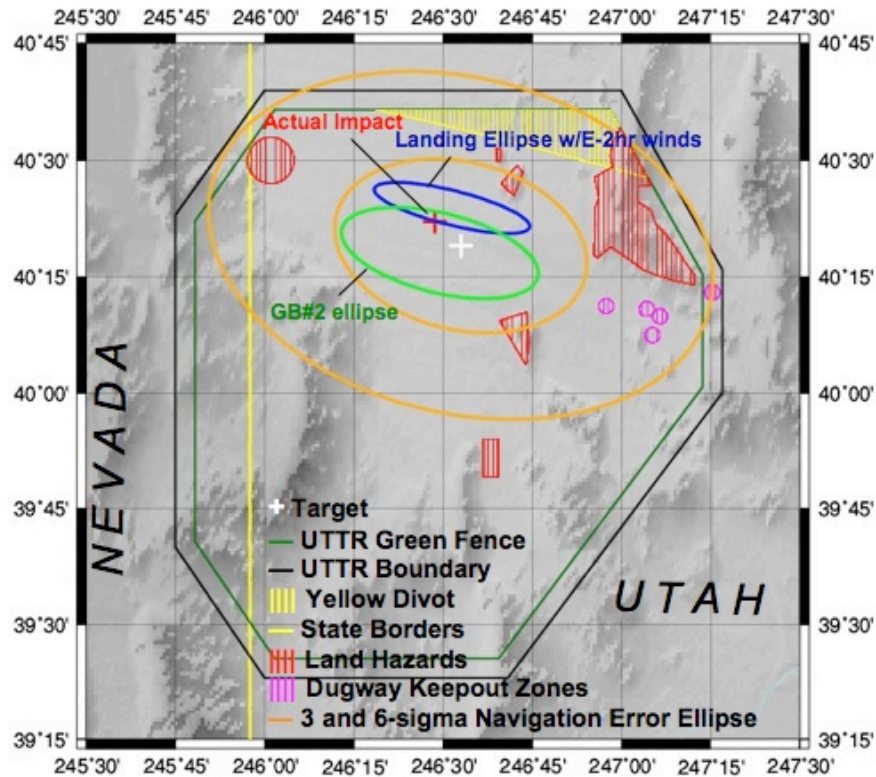


Figure 10: Final Predicted ellipse with Actual Landing Point

A plot of the Green Button 2 ellipse is shown in Fig. 10 in green. The actual Stardust landing point shown as a red cross was inside the Green Button 2 ellipse. The events leading to this impact point are discussed in Ref. 5.

Acknowledgments

The research described in this paper was carried out at the Jet Propulsion Laboratory, California Institute of Technology, under a contract with the National Aeronautics and Space Administration. The authors would like to thank Ed Hirst and Tom Wahl for their guidance in the hazard analysis. The authors would also like to thank Gavin Mendeck at the Johnson Space Center and Rolf Bohman of The Aerospace Corporation for help in validating results for the Stardust entry.

References

- ¹ Wawrzyniak, G. G., and Wahl, T. E., *Human Safety for the Genesis Sample Return Mission*, 15th AAS/AIAA Space Flight Mechanics Conference, AAS 05-23, AAS, San Diego, CA, January 23, 2005.
- ² *SDU-SCT-0006 Procedure for SRC Release. Rev. Final*, December 30, 2005. Freund, Sandy. Lockheed Martin.
- ³ National Aeronautics and Space Administration, *Procedural Requirements Draft NPR Range Safety Program*, Document # 8715.5. July 8, 2005.
- ⁴ Wahl, T. E., *Stardust Earth Targeting and Entry Safety Plan Volume 1: Safety Analysis*, JPL D-33715, Jet Propulsion Laboratory, December 30, 2005.
- ⁵ Desai, P. N., Lyons, D. T., Tooley, J., and Kangas, J., "Entry, Descent, and Landing Operations Analysis for the Stardust Re-Entry Capsule," AIAA/AAS Astrodynamics Specialists Conference, AIAA, Washington D.C., Aug. 2006 (to be published).
- ⁶ Helfrich, C., Bhat, R., Kangas, J., Wilson, R., Wong, M., Potts, C., and Williams, K., "Maneuver Analysis and Targeting Strategy for the Stardust Re-Entry Capsule," AIAA/AAS Astrodynamics Specialists Conference, AIAA, Washington D.C., Aug. 2006 (to be published).
- ⁷ Ivanov, M., Ling, L., Salama, A., and McRonald, A. *Stardust Return To Earth Breakup and Burnup Analysis*. Jet Propulsion Laboratory, June 6, 2006.
- ⁸ Research Triangle Institute, *Casualty Areas from Impacting Inert Debris for People in the Open*, RTI Report No. RTI/5180/60-31F, April 13, 1995.
- ⁹ Dobson, J. E., E. A. Bright, P. R. Coleman, R.C. Durfee, B. A. Worley. 2000. *LandScan: A Global Population Database for Estimating Populations at Risk*, Photogrammetric Engineering & Remote Sensing Vol. 66, No. 7, July 2000, pp. 849-857.