

2104-34
82207

DYNAMICAL MODELING OF SURFACE TENSION

J. U. Brackbill and D. B. Kothe
Theoretical Division, Los Alamos National Laboratory
Los Alamos, NM 87545

87

In a recent review it is said that free-surface flows “represent some of the difficult remaining challenges in computational fluid dynamics” [Tsai and Yue, 1996]. There has been progress with the development of new approaches to treating interfaces, such as the level-set method and the improvement of older methods such as the VOF method [Kothe *et al.*, 1996].

A common theme of many of the new developments has been the regularization of discontinuities at the interface. One example of this approach is the continuum surface force (CSF) formulation for surface tension, which replaces the surface stress given by Laplace’s equation by an equivalent volume force [Brackbill *et al.*, 1992].

Here, we describe how CSF formulation might be made more useful. Specifically, we consider a derivation of the CSF equations from a minimization of surface energy as outlined by Jacqmin [1996]. This reformulation suggests that if one eliminates the computation of curvature in terms of a unit normal vector, parasitic currents may be eliminated. For this reformulation to work, it is necessary that transition region thickness be controlled. Various means for this, in addition to the one discussed by Jacqmin [1996], are discussed.

Derivation of the CSF Equations from an Energy Functional

Beginning with the energy attributed by Jacqmin [1996] to van der Waals, we show that minimization of the surface energy is equivalent to Plateau’s problem [Logan], in which surface area is minimized. Further, following Jacqmin’s virtual work argument, we derive a CSF-like formulation. The difference between this and the standard CSF formulation illuminates the origin of parasitic currents and suggests that these are best eliminated by controlling the interface thickness.

Consider an incompressible fluid with density ρ_1 in region Ω separated by a closed surface $\partial\Omega$ from a second incompressible fluid with density ρ_2 ;

$$\rho = \begin{cases} \rho_1, & \mathbf{x} \in \Omega \\ \rho_2, & \mathbf{x} \notin \Omega. \end{cases} \quad (1)$$

On $\partial\Omega$, in the usual surface tension formulation given by Laplace’s equation, a surface stress boundary condition is imposed,

$$(p_1 - p_2 + \sigma\kappa)\hat{\mathbf{n}} = 0, \quad (2)$$

where $p_{1,2}$ is the pressure in fluids 1 and 2, σ is the surface tension coefficient, and κ is the local surface curvature.

In the CSF model, the density, ρ , is replaced by a regularized density that is calculated by convolving $\rho(\mathbf{x})$ with an interpolation function, $S(\mathbf{x}' - \mathbf{x}; h)$. S has bounded support

h , is normalized, and decreases monotonically with increasing $|\mathbf{x} - \mathbf{x}'|$. The regularized density,

$$\tilde{\rho}(\mathbf{x}) = \frac{1}{h^3} \int_v \rho(\mathbf{x}') S(\mathbf{x} - \mathbf{x}') d^3 x' , \quad (3)$$

is differentiable,

$$\nabla \tilde{\rho}(\mathbf{x}) = \frac{1}{h^3} \int \rho(\mathbf{x}') \nabla S(\mathbf{x} - \mathbf{x}') d^3 x' . \quad (4)$$

Consider the term in the surface-energy integral, given by Jacqmin [1996].

$$e = \int d^3 x \left[\frac{1}{2} \alpha \nabla \tilde{\rho}(\mathbf{x}) \cdot \nabla \tilde{\rho}(\mathbf{x}) + \beta f(p) \right] , \quad (5)$$

in which the first term is proportional to composition gradients. As in Brackbill *et al.* [1992], $\nabla \tilde{\rho}$ is given by an integral over the interface,

$$\nabla \tilde{\rho}(\mathbf{x}) = \frac{[\rho]}{h^3} \int_{\partial\Omega} \hat{\mathbf{n}}(\mathbf{x}_s) S(\mathbf{x} - \mathbf{x}_s) dA , \quad (6)$$

where $[\rho] = \rho_1 - \rho_2$. Substituting this expression into Eq. (5) and setting $\beta = 0$ gives

$$I = \frac{[\rho]^2}{h^2} \int_{\partial\Omega} \int_{\partial\Omega'} \hat{\mathbf{n}}(\mathbf{x}_s) \cdot \hat{\mathbf{n}}(\mathbf{x}'_s) T(\mathbf{x}_s, \mathbf{x}'_s; h) dA dA' , \quad (7)$$

where T is a “mass-matrix” defined by

$$T(\mathbf{x}_s, \mathbf{x}'_s; h) = \frac{1}{h^4} \int d^3 x S(\mathbf{x} - \mathbf{x}'_s) S(\mathbf{x} - \mathbf{x}_s) . \quad (8)$$

Clearly, when h is small compared with the local radius of curvature, $T = \delta(\mathbf{x}_s - \mathbf{x}'_s)$, and the ratio of e to the area of the interface is a constant,

$$A = e/[\rho]^2/h^2 . \quad (9)$$

Thus, minimizing the energy integral (with $\beta = 0$) is equivalent to minimizing the surface area, a classic variational problem called Plateau’s problem [Logan, 1987].

Following Jacqmin, we include the surface energy contribution in the total energy of the fluid,

$$E = \int \frac{1}{2} \rho \mathbf{u}^2 + \frac{1}{2} \alpha (\nabla \rho)^2 dV . \quad (10)$$

For simplicity, we neglect the wall-surface energy. Energy is a constant of the motion, so that

$$0 = \int \left[\frac{\partial}{\partial t} \frac{1}{2} \rho \mathbf{u}^2 + \alpha \nabla \rho \cdot \frac{\partial}{\partial t} \nabla \rho \right] dV . \quad (11)$$

The first term is the work done by forces acting on the fluid,

$$\frac{\partial}{\partial t} \frac{1}{2} \rho \mathbf{u}^2 = \mathbf{u} \cdot \mathbf{F} . \quad (12)$$

The second term can be integrated by parts to yield

$$0 = \int \mathbf{u} \cdot [\mathbf{F} + \alpha (\nabla^2 \rho) \nabla \rho] dV, \quad (13)$$

where we have substituted the continuity condition for an incompressible fluid,

$$\frac{\partial \rho}{\partial t} = -\mathbf{u} \cdot \nabla \rho. \quad (14)$$

Conservation of energy must hold whatever the velocity. Thus the surface tension force is given by

$$\mathbf{F} = -\alpha (\nabla^2 \rho) \nabla \rho \quad (15)$$

or substituting $\mathbf{n} = \nabla \rho$,

$$\mathbf{F} = -\alpha (\nabla \cdot \mathbf{n}) \mathbf{n}.$$

By comparison, the CSF force is

$$\mathbf{F}_{\text{CSF}} = \sigma \kappa(\mathbf{x}) \frac{\nabla \tilde{\rho}(\mathbf{x})}{[\rho]}, \quad (16)$$

where the curvature is given by

$$\kappa = -\nabla \cdot \hat{\mathbf{n}}. \quad (17)$$

Since $\mathbf{n} \cong \frac{[\rho]}{h} \hat{\mathbf{n}}$, then

$$\nabla \cdot \mathbf{n} = \frac{[\rho]}{h} \nabla \cdot \hat{\mathbf{n}} + 0 \left(\frac{h}{R} \right)^2 \quad (18)$$

and F_{CSF} and the variational force are equal when

$$\alpha = \frac{h}{[\rho]^2} \sigma. \quad (19)$$

(Jacqmin, using the incompressible flow condition,

$$\nabla \cdot \mathbf{u} = 0, \quad (20)$$

integrates by parts the second term in Eq. (13) to derive the potential form of the surface tension,

$$\mathbf{F} = -\rho \nabla \mu, \quad (21)$$

where $\mu = -\alpha \nabla^2 \tilde{\rho}$ is the chemical potential.)

Parasitic Currents

Parasitic currents are a troubling artifact of the CSF formulation. These slowly growing vortical flows in the transition region are driven by a vorticity source term equal

to $\nabla \times \mathbf{F}/\rho$. Jacqmin's form, Eq. (21), gives no contribution to this term. Equation (15) does give a contribution,

$$\nabla \times \mathbf{F}/\rho = -\frac{\alpha}{\rho} \nabla(\nabla^2 \rho) \times \nabla \rho. \quad (22)$$

This contribution will be nonzero until the "curvature," $\nabla^2 \rho$, of the interface is equal to a constant. Since this minimizes the surface energy, it would seem to be the correct physical result. The CSF formulation gives a similar contribution,

$$\nabla \times \mathbf{F}/\rho = \frac{\sigma}{[\rho]} \nabla \kappa \times \nabla \tilde{\rho}. \quad (23)$$

However, the calculation of the unit normal from the gradient of the density requires some care to avoid singularity, which appears to cause relatively large alterations of the curvature with small displacements of the interface. These, we believe, are the most probable source of the parasitic currents.

Comments on Controlling Transition Region Thickness

The essential difference between the CSF formulation, which was derived by the construction of a surface delta function that reproduces Laplace's equation in the limit of vanishing h , and the variational form is in the expression for the curvature. In the variational form, $\nabla \cdot \mathbf{n}$ replaces $\kappa = -\nabla \cdot \hat{\mathbf{n}}$. This substitution is valid if the transition region remains narrow.

Particle-in-cell methods and front-tracking methods in general provide solutions which preserve narrow transition regions. Further, as Kothe *et al.* note [2], the VOF technique eliminates numerical diffusion normal to the interface. (An example of a VOF calculation in three dimensions is shown in Fig. 1.) Thus, it is reasonable to expect that a reformulation of the CSF model which eliminates the calculation of the unit normal can be successfully implemented in a numerical code.

One can also consider techniques that actively control interface thickness. For example, in Jacqmin's formulation, the second term in the surface energy integral, Eq. (5), controls the thickness of the interface. Jacqmin notes that its effect is to segregate two immiscible fluids. By appropriate choices of $f(\rho)$, this term introduces a nonlinear diffusion that tends to narrow the transition region.

The use of this term in the energy integral to steepen the interface appeals to a physical cause. However, interface steepening can be introduced in a formulation that is purely numerical. Yabe [Yabe and Xiao, 1995], for example, discusses the convection of the density, Eq. (1), described in one dimension by

$$\frac{\partial \rho}{\partial t} + u_i \frac{\partial \rho}{\partial x_i} = 0. \quad (24)$$

The same equation describes the advection of any function of ρ ,

$$\frac{\partial F(\rho)}{\partial t} + u_i \frac{\partial F(\rho)}{\partial x_i} = 0. \quad (25)$$

Specifically, Yabe and Xiao consider the tangent function,

$$F(\rho) = \tan [0.99\pi (\rho/\langle\rho\rangle - 0.5)] , \quad (26)$$

where $\langle\rho\rangle = 1/2(\rho_1 + \rho_2)$. The factor 0.99 avoids infinite values when $\rho = \rho_1$ or ρ_2 . It is necessary, of course, that $\rho_1 \leq \rho \leq \rho_2$.

The technique maintains the sharpness of the transition region in the following way. The numerical solution of Eq. (25) will result in some numerical diffusion with diffusivity, $\sigma = \sigma(\Delta x^n, \Delta t^m)$. Thus, the associated equation can be written (in one dimension)

$$\frac{\partial F}{\partial t} + u_i \frac{\partial F}{\partial x_i} = \sigma \frac{\partial^2 F}{\partial x_i^2} . \quad (27)$$

Substituting this equation into the original advection equation (24), with the transformation given by Eq. (26), one finds that solutions of the ordinary differential equation,

$$\frac{d^2\rho}{dx^2} + \pi F(\rho) \left(\frac{d\rho}{dx}\right)^2 = 0 , \quad (28)$$

are stationary solutions of Eq. (24). The solution to this equation,

$$\rho = \frac{2}{\pi} \tan^{-1}(e^{\pi x}) , \quad (29)$$

is a continuous function with a steep transition between two nearly constant states.

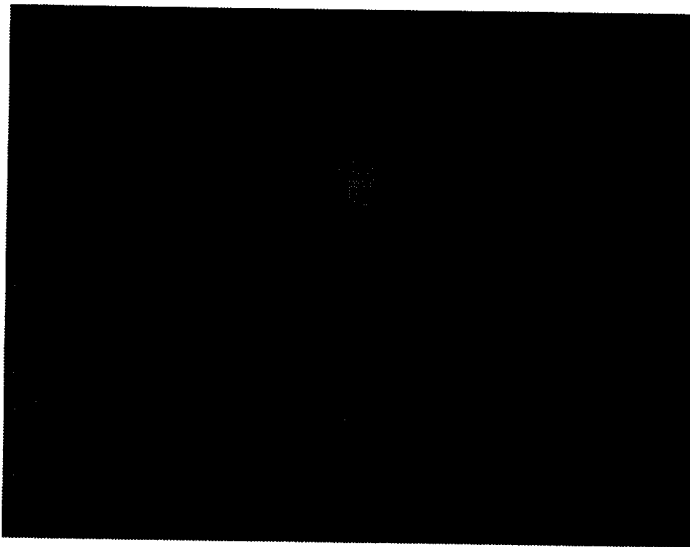
References

1. W. T. Tsai and D. K. P. Yue, "Computation of Nonlinear Free-Surface Flows," *Ann. Rev. Fl. Mech.* **28**, 249–278, 1996.
2. D. B. Kothe, W. C. Rider, S. J. Mosso, J. S. Brock, and J. L. Hochstein, "Volume Tracking of Interfaces Having Surface Tension in Two and Three Dimensions," 34th Aerospace Science Meeting, Reno, January 1996, paper AIAA 96-0859.
3. J. U. Brackbill, D. B. Kothe, and C. Zemach, "A Continuum Method for Modeling Surface Tension," *J. Comput. Phys.* **100**, 335, 1992.
4. D. Jacqmin, "An Energy Approach to the Continuum Surface Tension Method," 34th Aerospace Sciences Meeting, Reno, January 1996, paper AIAA 96-0858.
5. J. David Logan, *Applied Mathematics*, John Wiley, New York, 1996.
6. T. Yabe and F. Xiao, "Description of Complex and Sharp Interface with Fired Grids in Incompressible and Compressible Fluids," *Computers Math. Applic.* **29**, 15–25, 1995.

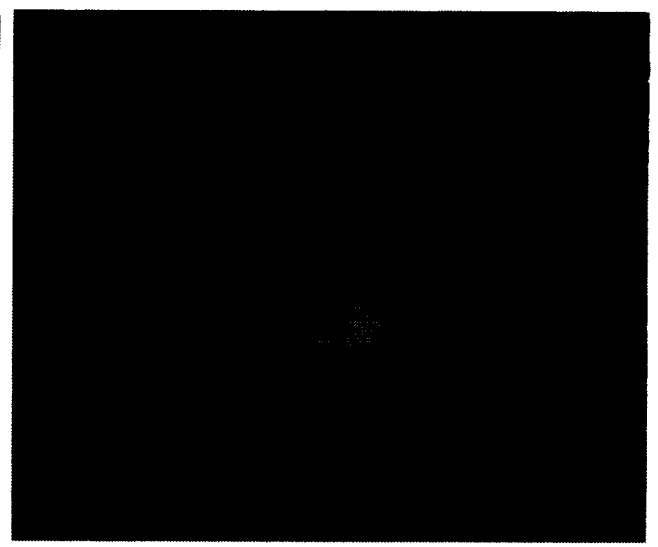
Figure Captions

A shallow-pool drop splash calculation is shown in Figs. 1-4. The mesh spans $[0.0, 8.0]$ (cm) in the x and y directions and $[-8.0, 8.0]$ (cm) in the z direction with $16 \times 16 \times 32$ cells. A spherical drop with a 4.0 cm radius is centered at $(0.0, 0.0, 3.0)$ above a shallow pool in the xy plane that occupies $z = [-8.0, -5.5]$. The drop and pool are the same fluid, with 10 times the density of the background fluid density. Surface tension is neglected and the fluids are assumed to be inviscid. Gravity is $(0.0, 0.0, -980.6)$ cm/s². Interfaces are tracked with our new 3-D piecewise planar volume tracking algorithm, and the incompressible flow is modeled with an approximate projection technique.

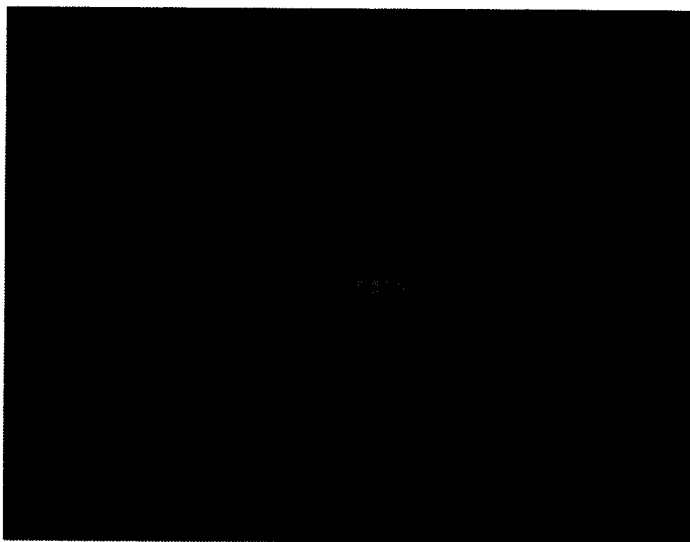
The drop size is large compared to the shallow pool (having a volume 25% of the pool volume), so the drop impact on the pool generates a sizable splash and rebound jet, as seen in Figs. 3 and 4. Plotted are isosurfaces of the 1/2 volume fraction level at $t = 0$ (1), $t = 0.12$ (2), $t = 0.20$ (3), and $t = 0.40$ (4).



(1)



(2)



(3)



(4)

Electric and Magnetic Effects

