

# NASA TECH BRIEF

## John F. Kennedy Space Center



NASA Tech Briefs announce new technology derived from the U.S. space program. They are issued to encourage commercial application. Tech Briefs are available on a subscription basis from the National Technical Information Service, Springfield, Virginia 22151. Requests for individual copies or questions relating to the Tech Brief program may be directed to the Technology Utilization Office, NASA, Code KT, Washington, D.C. 20546.

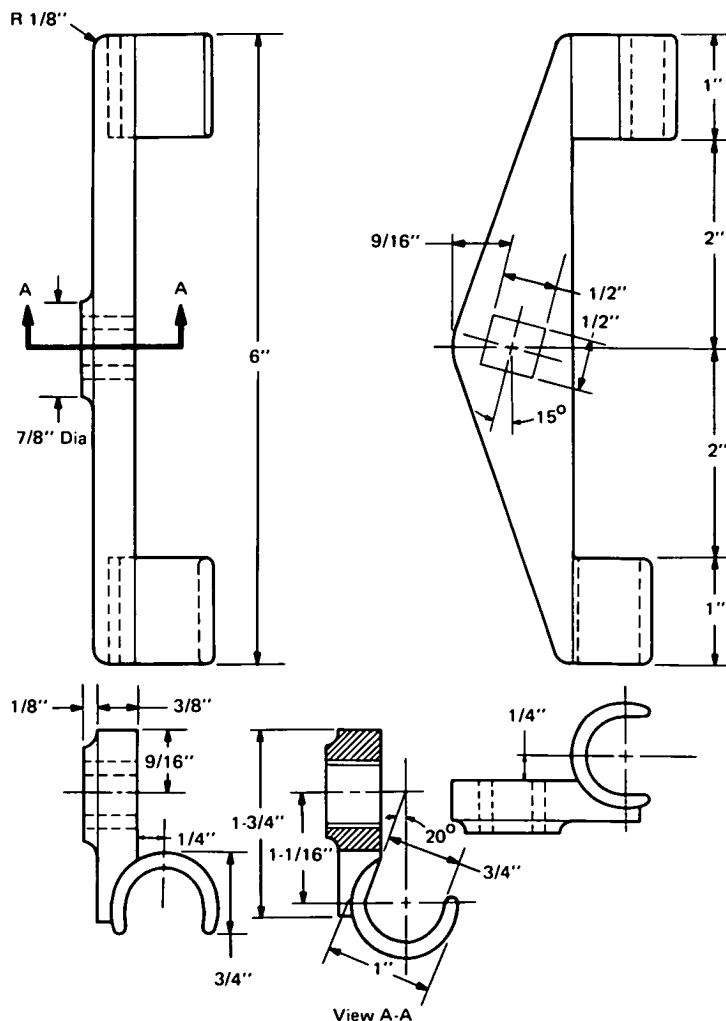
### A Tool for Measuring Elevator Cable Tension

#### The problem:

Many elevators and some lifting systems are supported by a set of cables or ropes. To avoid uneven and excessive wear, each cable or rope should be adjusted to carry equal weight. However, present tools used for checking cable tension are complex, bulky, and costly.

#### The solution:

A simple tool was designed to measure relative cable tension. The tool used with a 1/2-inch (1.25-cm) drive torque wrench weighs approximately 2 pounds (1 kg) and can be produced at one-tenth the cost of the existing tools.



(continued overleaf)

**How it's done:**

The design, as shown in the figure, has two U shaped ends to grip the elevator cable along its length. A torque wrench with a 0-to-100-foot-pound (0-to-135.6J) capacity is then inserted into the tool socket and twisted to check the cable tension. Readings are taken with a C-hook holding the wrench handle a uniform distance from the cable. If tension is incorrect, the particular cable is adjusted by a thimble retaining nut. This process repeats until all of the cables are checked and adjusted to carry equal weight.

**Note:**

Requests for further information may be directed to:  
Technology Utilization Officer  
Kennedy Space Center  
Code AD-PAT  
Kennedy Space Center, Florida 32899  
Reference: B72-10509

**Patent status:**

NASA has decided not to apply for a patent.

Source: E. Lowell Weaver of  
Bendix Corp.  
under contract to  
Kennedy Space Center  
(KSC-10708)