

# NASA TECH BRIEF

## Marshall Space Flight Center



NASA Tech Briefs announce new technology derived from the U.S. space program. They are issued to encourage commercial application. Tech Briefs are available on a subscription basis from the National Technical Information Service, Springfield, Virginia 22151. Requests for individual copies or questions relating to the Tech Brief program may be directed to the Technology Utilization Office, NASA, Code KT, Washington, D.C. 20546.

### No-Err Typing Aids

#### The problem:

Correction of typing mistakes of one letter, one word, or a complete line often necessitates retyping of the entire page because of the difficulty of aligning the typewritten page into the typewriter.

#### The solution:

By using No-Err typing aids, A or B, anyone can accurately align the type to fit in perfectly with the rest of the page. This will save time, subsequently money, and will produce a typewritten page with a more professional appearance.

#### How it's done:

Two models, No-Err Typing Aid-A and No-Err Typing Aid-B, have been developed. The No-Err Typing Aid-A, as shown in Figure 1, is made of a wire attached to construction paper by a rivet. The wire is approximately 0.31 mil thick, and the construction paper thickness is approximately 50 pounds. The construction paper has an adhesive on the back side, making it possible to attach the No-Err Typing Aid-A to the transparent card holder of any typewriter. The wire is designed in such a manner that the L-shaped letter guide will almost touch the type-

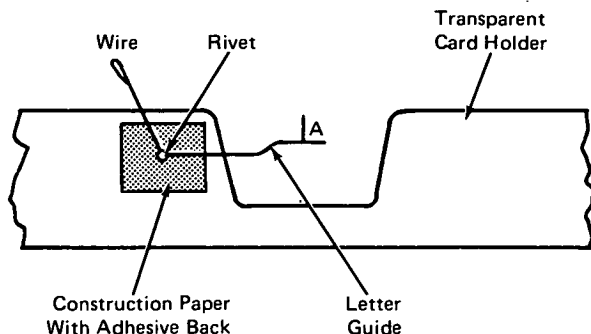


Figure 1. No-Err Typing Aid-A

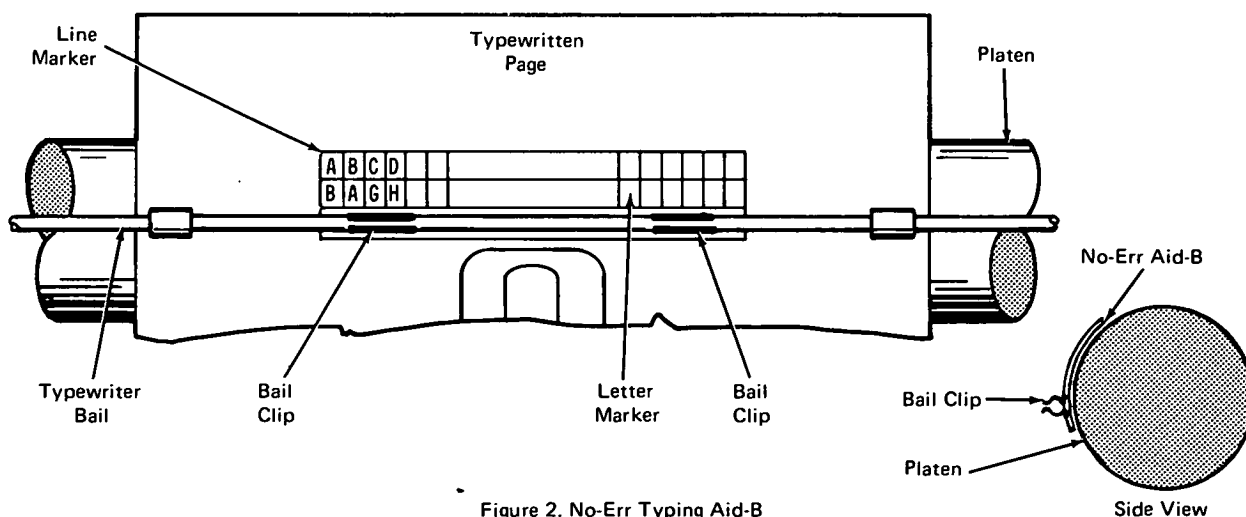


Figure 2. No-Err Typing Aid-B

(continued overleaf)

written page. The rivet is designed to allow anyone using the No-Err Typing Aid-A to pivot the letter guide up so that it is out of position unless it is being used. This convenience is for those typewriters having an attachment for larger type, making it necessary to move the letter guide out of the way.

The No-Err Typing Aid-B, as shown in Figure 2, is made of plastic and is attached to the typewriter bail, by bail clips, located at each end of the No-Err Aid-B. The letter markers are the vertical lines, and the line markers are the horizontal lines. By using the vertical and horizontal lines, any secretary can accurately reset the typewritten page, and can insert letters, words, or even a whole line accurately.

**Notes:**

1. The information concerning this innovation may be of interest to typewriter manufacturers, office supply dealers, and all owners and users of typewriters.
2. Requests for further information may be directed to:  
Technology Utilization Officer  
Marshall Space Flight Center  
Code A&PS-TU  
Huntsville, Alabama 35812  
Reference: B72-10498

**Patent status:**

Inquiries about obtaining rights for the commercial use of this invention may be made to:  
Patent Counsel  
Marshall Space Flight Center  
Code A&PS-PAT  
Huntsville, Alabama 35812

Source: R. D. Dubois and G. T. Pinson of  
The Boeing Company  
under contract to  
Marshall Space Flight Center  
(MFS-15218)