

September 1965

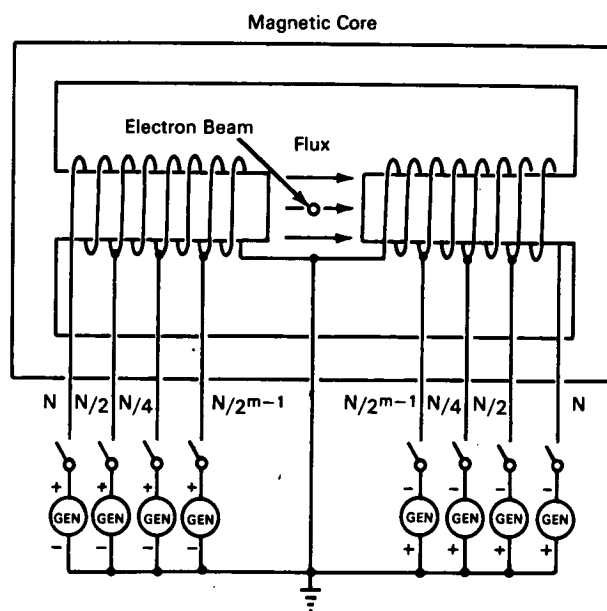
Brief 65-10283

# NASA TECH BRIEF



NASA Tech Briefs are issued by the Technology Utilization Division to summarize specific technical innovations derived from the space program. Copies are available to the public from the Clearinghouse for Federal Scientific and Technical Information, Springfield, Virginia, 22151.

## Electron-Beam Deflection Controlled by Digital Signals



**The problem:** Accurately controlling the electron-beam deflection in cathode-ray tubes, vidicons, image orthicons, and other electronic image converters. Conventional yoke deflection systems require circuitry to convert a time-dependent input voltage to an equivalent time-dependent current flow through the deflection yoke windings. These circuits have characteristics that are difficult to control and that lead to deflection inaccuracy and image distortion.

**The solution:** A tapped magnetic deflection yoke and a series of current generators that supply equal current to each tap through digitally controlled

switches. Since the electron-beam deflection is controlled by digital information rather than by a time-variable voltage or current, the system has greater inherent accuracy.

**How it's done:** The magnetic deflection yoke consists of  $N$  turns with a series of taps brought out at points in the turns corresponding to  $N$ ,  $N/2$ ,  $N/4$ ,  $N/8$ , . . . ,  $N/2^{m-1}$ , where  $m$  equals the number of binary digits in the code system. When a switch is closed, a magnetic field is established that is proportional to the product of the number of turns and the current. The magnitude of the magnetic field and the

(continued overleaf)

electron-beam deflection is therefore controlled by the application of digital signals that open and close the switches. For a specific magnetic field intensity to be produced, only those switches that correspond to the numerical value of the desired intensity need be closed.

**Notes:**

1. If separate windings for each current source are used rather than one tapped winding, the yoke's power dissipation will be no greater than that of a yoke of conventional design.
2. The inductance of the yoke as seen by the most significant bit is one-quarter that of a conventional yoke being driven by the same current source to produce the same deflection. This gives a one-octave improvement in the yoke's frequency response.

3. Inquiries concerning this innovation may be directed to:

Technology Utilization Officer  
Goddard Space Flight Center  
Greenbelt, Maryland, 20771  
Reference: B65-10283

**Patent status:** NASA encourages commercial use of this innovation. No patent action is contemplated by NASA.

Source: John R. Cressey  
(GSFC-385)