



Morphological development and cytochrome c oxidase activity in *Streptomyces lividans* are dependent on the action of a copper bound Sco protein

Katie L. I. M. Blundell, Michael T. Wilson, Dimitri A. Svistunenko, Erik Vijgenboom and Jonathan A. R. Worrall

Open Biol. 2013 **3**, 120163, published 23 January 2013

References

[This article cites 53 articles, 17 of which can be accessed free](#)

<http://rsob.royalsocietypublishing.org/content/3/1/120163.full.html#ref-list-1>

This is an open-access article distributed under the terms of the Creative Commons Attribution License, which permits unrestricted use, distribution, and reproduction in any medium, provided the original work is properly cited.

Subject collections

Articles on similar topics can be found in the following collections

[biochemistry](#) (35 articles)

[biophysics](#) (10 articles)

[microbiology](#) (17 articles)

Email alerting service

Receive free email alerts when new articles cite this article - sign up in the box at the top right-hand corner of the article or click [here](#)



Cite this article: Blundell KLIM, Wilson MT, Svistunenko DA, Vijgenboom E, Worrall JAR. 2013 Morphological development and cytochrome *c* oxidase activity in *Streptomyces lividans* are dependent on the action of a copper bound Sco protein. *Open Biol* 3: 120163.
<http://dx.doi.org/10.1098/rsob.120163>

Received: 6 November 2012

Accepted: 2 January 2013

Subject Area:

biochemistry/biophysics/microbiology

Keywords:

Streptomyces, copper-metallochaperone, cytochrome *c* oxidase, Sco protein, morphological development, thiol-disulphide reductase activity

Author for correspondence:

Jonathan A. R. Worrall

e-mail: jworrall@essex.ac.uk

Morphological development and cytochrome *c* oxidase activity in *Streptomyces lividans* are dependent on the action of a copper bound Sco protein

Katie L. I. M. Blundell¹, Michael T. Wilson¹, DimitriA. Svistunenko¹, Erik Vijgenboom² and Jonathan A. R. Worrall¹¹School of Biological Sciences, University of Essex, Wivenhoe Park, Colchester CO4 3SQ, UK²Molecular Biotechnology, Institute of Biology Leiden, Sylvius Laboratory, Leiden University, PO Box 9505, 2300RA Leiden, The Netherlands

1. Summary

Copper has an important role in the life cycle of many streptomycetes, stimulating the developmental switch between vegetative mycelium and aerial hyphae concomitant with the production of antibiotics. In streptomycetes, a gene encoding for a putative Sco-like protein has been identified and is part of an operon that contains two other genes predicted to handle cellular copper. We report on the Sco-like protein from *Streptomyces lividans* (Sco^{Sl}) and present a series of experiments that firmly establish a role for Sco^{Sl} as a copper metallo-chaperone as opposed to a role as a thiol-disulphide reductase that has been assigned to other bacterial Sco proteins. Under low copper concentrations, a Δsco mutant in *S. lividans* displays two phenotypes; the development switch between vegetative mycelium and aerial hyphae stalls and cytochrome *c* oxidase (CcO) activity is significantly decreased. At elevated copper levels, the development and CcO activity in the Δsco mutant are restored to wild-type levels and are thus independent of Sco^{Sl}. A CcO knockout reveals that morphological development is independent of CcO activity leading us to suggest that Sco^{Sl} has at least two targets in *S. lividans*. We establish that one Sco^{Sl} target is the dinuclear Cu_A domain of CcO and it is the cupric form of Sco^{Sl} that is functionally active. The mechanism of cupric ion capture by Sco^{Sl} has been investigated, and an important role for a conserved His residue is identified.

2. Introduction

Streptomycetes are soil-dwelling Gram-positive bacteria best known for their ability to produce a bewildering array of secondary metabolites that have antibiotic, antimicrobial and anti-cancer properties [1]. The onset of chemical differentiation (antibiotic production) coincides with the onset of morphological development from a vegetative growth to a reproductive growth phase beginning with aerial mycelium followed by cell division and sporulation. The bioavailability of copper (Cu) has been shown in certain *Streptomyces* strains to stimulate morphological development and antibiotic production [2–5]. This dependence is restricted to the reproductive growth phase (aerial mycelium and spores), whereas vegetative growth proceeds under strongly

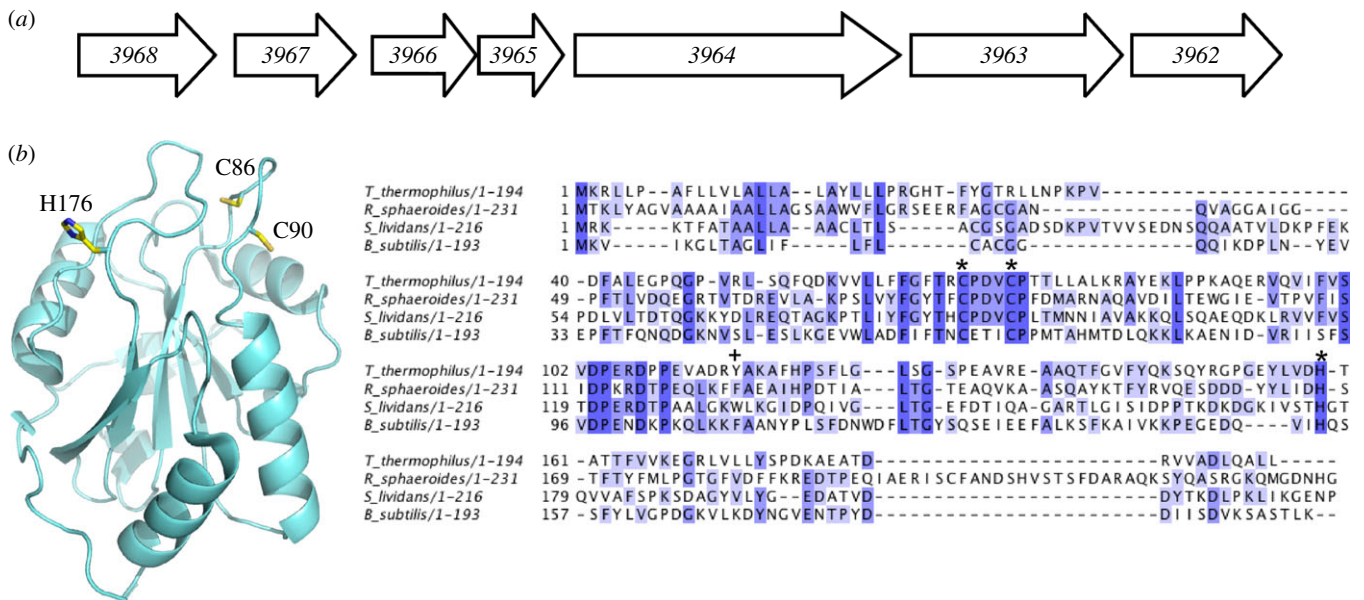


Figure 1. The *sco* operon, X-ray crystal structure of apo-SCO^{Bs} and multiple sequence alignment of bacterial Sco proteins for which biochemical or structural data have been reported. (a) Schematic of the unidirectional *sco* operon (3966, 3965 and 3964), including two upstream and two downstream genes found in *Streptomyces coelicolor*. The coding sequence numbers assigned in the *S. coelicolor* genome are indicated with the respective annotations obtained from the StrepDB; 3968 (integral membrane protein), 3967 (hypothetical membrane protein), 3966 (Sco/SenC/PrrC-like protein), 3965 (conserved hypothetical protein), 3964 (integral membrane putative Cu transport protein with Cu binding CopC-like and CopD-like domains), 3963 (hypothetical protein) 3962 (prephenate dehydratase involved in Phe biosynthesis). (b) Cartoon representation of the X-ray crystal structure of apo-SCO^{Bs} (pdb 1XZ0) [10]. The location of the His and Cys residues considered to be involved in Cu(II) coordination are labelled with *S. lividans* numbering. CLUSTALW2 sequence alignments [11] of bacterial Sco proteins with completely and partially conserved residues boxed from dark blue to light blue, respectively. The residues involved in Cu(II) coordination are indicated (asterisk) and a plus symbol indicates the position of Trp-132 for *S. lividans*. The UniprotKB NCBI accession numbers are gi |257157333| (*Bacillus subtilis*), gi |77386477| (*Rhodobacter sphaeroides*), gi |198443051| (*Thermus thermophilus*).

Cu-limiting conditions. The Cu proteome of *Streptomyces coelicolor* has been reported based on *in silico* methods and contains a large number of cuproproteins and cupro enzymes [6,7]. The stimulatory effect of Cu in development therefore suggests that some Cu-dependent biochemical functions correlate with the complex life cycle of streptomycetes and that cuproproteins and cuproenzymes must play a part. However, their identification and role in development have yet to be fully elucidated [7].

Streptomyces lividans has an even more pronounced dependence on Cu for development than *S. coelicolor*. The former shares a high level of sequence identity and genome organization with *S. coelicolor* but the annotated genome has not yet been reported. Therefore, the gene numbering of the annotated *S. coelicolor* genome database is used in this study in keeping with previous studies of cuproproteins in *S. lividans* [8,9]. A recent study has highlighted that in the five sequenced and annotated genomes of streptomycetes a conserved unidirectional gene cluster is present that includes three genes (3966, 3965, 3964) predicted to encode cuproproteins (figure 1) [4]. In *S. coelicolor*, experimental evidence suggests that this cluster has a central role in the utilization of Cu and may therefore have a complex role in the Cu-dependent stimulation of development [4]. The operon has been named the *sco* operon owing to the presence of a gene encoding for a protein with a CXXXC motif and sequence homology with the Sco/SenC/PrrC protein family. Synthesis of cytochrome *c* oxidase (Sco) proteins is present in both eukaryotes and prokaryotes, and was first identified, along with other cytochrome *c* oxidase (CcO) assembly factors, in the mitochondria of yeast and then subsequently in humans where a role as a Cu(I)-metallochaperone in

co-factoring the mixed valence di-nuclear Cu_A site of the aa₃-type CcO of the mitochondrial electron transport chain was first proposed [12–14].

The most extensively studied bacterial Sco protein is that from *Bacillus subtilis* (Sco^{Bs}). This protein has been reported to bind both Cu(I) and Cu(II) *in vitro*, and a genetic knockout of Sco^{Bs} leads to a marked phenotype on the activity of the aa₃-type CcO and organism viability [15] suggesting a role in Cu_A site maturation in this Gram-positive bacteria. An alternative role as a thiol-disulphide reductase has been proposed for bacterial Sco proteins [10,16,17]. Evidence for this comes from an *in vitro* NMR study using the periplasmic Sco protein from *Thermus thermophilus* (Sco^{Tt}), which was found to be incapable of delivering Cu to the Cu_A site of CcO [18]. Instead, a role in keeping the Cys residues of the Cu_A site in the reduced form to facilitate metallation of the Cu_A site by a newly identified periplasmic Cu(I) chaperone, PCu_AC (periplasmic Cu_A chaperone) [18], was proposed. PCu_AC is not present in all bacteria and is absent in *B. subtilis*, but in *S. lividans* the 3965 gene, part of the *sco* operon (figure 1a), is predicted to encode a PCu_AC-like protein [7]. The structures of Sco proteins from yeast [19], human [20,21], *B. subtilis* [10,22] and *T. thermophilus* [18] all have a fold very similar to the thioredoxin (Trx) superfamily (figure 1b), and, importantly, the CXXXC motif implicated in Cu binding (figure 1b) superimposes on the CXXC redox motif of Trx making a redox role for Sco proteins an attractive proposition. Subsequent studies have reported thiol-disulphide reductase activity of Sco^{Bs} and PrrC (a Sco-like protein found in *Rhodobacter sphaeroides*) [23,24].

A consensus functional role of bacterial Sco proteins has not therefore been reached and it may be that variation

exists across species [17]. In this study, we have focused our attention on the Sco-like protein identified in *S. lividans* (Sco^{Sl}), in which the gene (*3966*) is located in the so-called *sco* operon (figure 1a) [4]. We report herein on the properties of an N-terminal-truncated form of the *3966* gene product upon addition of cupric ions and assess the redox and thiol-disulphide reductase activity of the CXXXC motif in the absence of Cu. Parallel *in vivo* studies have been performed and imply a critical role for Sco^{Sl} both in the development switch from vegetative mycelium to aerial hyphae and in the activity of the *aa*₃-type CcO at low [Cu]. The development switch is found to be independent of CcO activity, and we present evidence to suggest that a second Sco^{Sl} target, requiring Cu for function, is essential for morphological development in *S. lividans* under low Cu levels. Mechanistic features of Cu(II) loading to Sco^{Sl} and the H176A mutation have been studied, which together with the *in vivo* data leads to new insights into the functional role of Sco^{Sl} in *S. lividans*.

3. Material and methods

3.1. Generation of the Sco and Cox mutants of *Streptomyces lividans* 1326

The agar media soya flower mannitol (SFM), R5 (complex medium) and Difco nutrient agar (DNA) were prepared according to Kieser *et al.* [25]. Antibiotics were used in the following final concentrations: apramycin (50 µg µl⁻¹) and thiostrepton (5–20 µg µl⁻¹). Agar plates were incubated at 30°C, and spore stocks were obtained from cultures grown on SFM plates and stored in 20 per cent glycerol at –20°C. The *3966* gene encoding for Sco^{Sl} was deleted in *S. lividans* 1326 (*S. lividans* 66, stock number 1326 from the John Innes Centre) in a two-step process using the CRE-lox system [26]. First, the gene (nt + 33 to 490) was replaced by homologous recombination with an apramycin-resistance cassette flanked by loxP sites. For this purpose, the upstream flanking region of *3966* (from –2160 to +32) and the downstream flanking region (from +491 to 2471) were amplified from genomic DNA by PCR introducing *EcoRI*, *XbaI* and *XbaI*, *HindIII* sites, respectively, for cloning purposes. These two fragments and the apramycin-resistance cassette flanked by loxP sites were cloned in the delivery vector pWHM3 that is unstable in *Streptomyces* [27]. Following protoplast transformation, recombinants that were apramycin-resistant but had lost the vector (thiostrepton-resistance) were isolated. Second, an unstable, plasmid-encoding Cre recombinase was introduced [26]. The Cre recombinase allowed for the excision of the apramycin-resistance cassette on the lox sites. The resulting strain, Δ*sco*, has lost most of the coding sequence of Sco^{Sl} and has only a 61 nt scar, including two *XbaI* sites left in the genome. The Δ*sco* strain was analysed by PCR to confirm the loss of *3966* and vector sequences. The *cox*::Apra mutant was isolated with a similar protocol replacing the open reading frames of *2155* and *2156* with the apramycin-resistance cassette. The replacement was confirmed by PCR.

3.2. Plasmid construction for complementation

For complementation/over-expression of Sco^{Sl} in wild-type (wt) 1326 and Δ*sco* strains of *S. lividans*, the *3966* gene

including 747 nt upstream was cloned in pHJL401 as an *EcoRI*–*BamHI* fragment generated by PCR with genomic DNA as template. The 747 nt upstream contains the entire promoter region of *3966* as determined by promoter probing with the *redD* gene as reporter [28]. The Sco^{Sl} H176A mutation was introduced in this construct by fusion PCR of two fragments with a 24 nt overlap. The inserts of all plasmids used in this study were sequenced on both strands. Introduction of the plasmids in *S. lividans* was carried out by protoplast transformation according to standard protocols.

3.3. *In vivo* cytochrome *c* oxidase assay

The *in vivo* CcO activity was visualized with *N,N,N',N'*-tetramethyl-*p*-phenylenediamine (TMPD) as substrate essentially according to references [29,30]. The wt and mutant strains were spotted on DNA plates (10 µl containing 1000 spores) and incubated for 24–30 h at 30°C. Spots were overlaid with 10 ml of a 25 mM phosphate buffer pH 7.4 solution containing 20 per cent ethanol, 0.6 per cent agarose, 1 per cent sodium deoxycholate and 10 mg TMPD. CcO activity is detected by the appearance of the blue colour of the oxidized product (indophenol blue) of the TMPD substrate and was recorded by taking digital images every 30 s for 5–10 min.

3.4. Cloning and site-directed mutagenesis of Sco^{Sl} for over-expression in *Escherichia coli*

An N-terminal-truncated version of Sco^{Sl} (*3966*), with nucleotides encoding amino acid residues 1–23 deleted, was amplified from *S. lividans* DNA and ligated into the *NdeI* and *BamHI* restriction sites of a pET28a vector (Novagen) to create an N-terminal His₆-tagged construct for over-expression in *Escherichia coli*. The Quikchange (Stratagene) site-directed mutagenesis method was used to create the H176A mutation in the N-terminal-truncated Sco^{Sl}. The following mutagenic primers were used, with the nucleotides changed to create the mutation in lower case: 5'-GATCGTCTCGACCgCGG CACCCAGGTCGTC-3' and 5'-CGACCTGGGTGCCGgCGGT CGAGACGATC-3'.

3.5. Over-expression and purification of Sco^{Sl} and the H176A mutation

Sco^{Sl} and H176A were over-expressed in *E. coli* strain BL21 (DE3) starting from overnight pre-cultures (2 ml 2xYT, 2 µl Kan (50 mg ml⁻¹), 37°C) that were subsequently used to inoculate 750 ml of medium in 2 l flasks. At an OD₆₀₀ of 0.6, 1 M isopropyl β-D-1-thiogalactopyranoside solution (Melford) was added to give a final concentration of 1 mM and the temperature decreased to 25°C. Cells were harvested after 16 h at 4000 r.p.m. and lysed using an EmulsiFlex-C5 cell disrupter (Avestin) followed by centrifugation at 18 000 r.p.m. for 20 min at 4°C. The clarified supernatant was loaded to a 5 ml Ni²⁺-NTA Sepharose column (GE Healthcare) equilibrated with buffer A (50 mM Tris/HCl, 500 mM NaCl, 20 mM imidazole, pH 8.0) and eluted with a linear imidazole gradient using buffer B (buffer A with 500 mM imidazole). A single peak at approximately 25 per cent buffer B was eluted from the column, and fractions were pooled and dialysed overnight at 4°C against buffer C (50 mM Tris/HCl, 150 mM NaCl, 1 mM EDTA, pH 8.0). Following dialysis,

the N-terminal His₆-tag was removed by incubating the protein at room temperature overnight in the presence of 125 U of thrombin (Sigma). The protein/thrombin mixture was reapplied to the Ni²⁺-NTA Sepharose column (GE Healthcare) and the flow-through collected and concentrated at 4°C using a centrifugal concentrator (Vivaspin) with a 5 kDa cut-off. Concentrated protein was loaded to a G75 Sephadex column (GE Healthcare) equilibrated with buffer D (buffer C with 2 mM dithiothreitol (DTT)). Fractions eluting in the major peak of the G75 column were analysed by 15 per cent SDS-PAGE and those deemed of good purity were concentrated and stored at -20°C until required. Electrospray ionization-mass spectrometry (ESI-MS) using a Micromass Quattro Ultima triple quadrupole instrument operating in the positive ion detection mode was used to determine the mass of the purified samples. Proteins were desalted and exchanged into 1 M ammonium acetate followed by a 1:20 dilution with a 50 per cent methanol and 1 per cent formic acid solution.

3.6. Preparation of apo- and Cu(II)-Sco^{SI} for circular dichroism spectroscopy

Apo-proteins were reduced in an anaerobic chamber (DW Scientific, [O₂] less than 2 ppm) with 10 mM DTT and desalted (twice) using a PD-10 column (GE Healthcare) into the desired DTT-free buffer. Concentrations of apo-proteins were determined by UV-vis spectroscopy (Varian Cary 50 UV-vis spectrophotometer) using an extinction coefficient of 14 565 M⁻¹ cm⁻¹ at 280 nm [31]. Cu(II)-loaded samples were prepared in 100 mM sodium phosphate, 50 mM NaCl, pH 7.5 starting from reduced apo-Sco^{SI} samples incubated with an excess of Cu(II)SO₄ for 30 min. Unbound Cu(II) was removed by desalting (PD-10 column) and concentrating at 4°C using a 5 kDa cut-off centrifugal concentrator (Vivaspin). Samples for circular dichroism (CD) analysis were exchanged into 10 mM KPi, 50 mM KF. Far-UV CD spectra were recorded between 260 and 175 nm and visible spectra between 600 and 300 nm at 20°C on a Chirascan CD spectrophotometer (Applied Photophysics, Leatherhead, UK) equipped with a thermostatic cell holder controlled with a Peltier system. CD spectra were analysed using DichroWeb [32,33] with the programs CDSSTR [34–36] and CONTIN-LL [37] and the databases 4, 7 [36,38] and SP175 [39].

3.7. Electron paramagnetic resonance spectroscopy

Wilmad SQ electron paramagnetic resonance (EPR) tubes (Wilmad Glass, Buena, NJ, USA) were used and filled with 200 µl of protein solutions (100 mM sodium phosphate, 50 mM NaCl pH 7.5) treated with a sub-stoichiometric amount of Cu(II)SO₄ (50 µM protein + 45 µM Cu(II)SO₄) and frozen in methanol kept on dry ice. EPR spectra were measured at 10 K on a Bruker EMX EPR spectrometer (X-band) at a modulation frequency of 100 kHz. A spherical high-quality Bruker resonator SP9703 and an Oxford Instruments liquid helium system were used to measure the low-temperature EPR spectra. The EPR spectra of the blank samples (frozen water) were subtracted from the EPR spectra of the protein samples to eliminate the baseline caused by the resonator's walls, quartz insert or quartz EPR tube. The baseline was corrected by subtraction of a

polynomial line drawn through a set of points randomly chosen on the baseline.

3.8. Cu(II) binding to apo-Sco^{SI} monitored by UV-vis and fluorescence spectroscopy

A stock solution of 100 mM Cu(II)SO₄ was prepared anaerobically and diluted as required. Reduced apo-Sco^{SI} proteins were prepared anaerobically in 100 mM sodium phosphate, 50 mM NaCl, pH 7.5. Titration of a Cu(II) solution of known concentration using a gastight syringe (Hamilton) into 100 µM of reduced apo-protein in an anaerobic quartz cuvette (Hellma) was monitored at 20°C in the UV-vis spectrum. Fluorescence spectroscopy was carried out on an LS 50B fluorimeter (Perkin Elmer). A Trp fluorescence emission spectrum was collected between 300 and 400 nm with excitation at 280 nm. The excitation slit and the emission slit were set at 5 nm, and the change in emission at approximately 330 nm was monitored upon titration of aliquots of a Cu(II) solution into a 5 µM protein solution.

3.9. Stopped-flow kinetics

Kinetic experiments were carried out using an SX20 stopped-flow spectrophotometer (Applied Photophysics) thermostatted at 20°C with a Peltier system. A stock of 100 mM Cu(II)SO₄ and reduced apo-proteins (20 mM sodium phosphate 50 mM NaCl, pH 7.5) were prepared. Time courses were taken at 360 and 380 nm with various Cu(II) concentrations (20–1000 µM before mixing) and 10 µM protein with the transients fitted to a two-step exponential function. A point-to-point accumulation was carried out over 320–420 nm with a step of 5 nm using 30 µM protein and 100 µM Cu(II) before mixing. The resulting kinetic data were analysed using the program 'ProK' (Applied Photophysics). This program was also used to construct spectra of intermediates using a simple sequential model (e.g. a > b > c). Analysis by singular value decomposition was used to determine the minimum number of species required to reconstruct the original dataset.

3.10. Determination of the mid-point redox potential of apo-proteins

Apo-Sco^{SI} (2.5 µM) and the H176A mutant (2.5 µM) in 100 mM sodium phosphate, 50 mM NaCl, pH 7.5 were oxidized by the addition of 1 mM oxidized DTT (Sigma). The oxidized proteins were titrated with a stock solution of 10 mM reduced DTT (Melford), allowing 10 min for the protein to equilibrate to each new potential. The transition from oxidized to reduced protein was monitored by the increase in Trp fluorescence emission at approximately 330 nm (excitation at 280 nm) measured at 25°C with 5 nm excitation and emission slits. Intensity was corrected for dilution effects. A mid-point reduction potential (E_m) was determined by calculating the fraction of Sco^{SI} reduced (f_t) at each point in the titration and plotting this as a function of the system potential. The data were then fit to the Nernst equation (3.1)

$$f_t = \frac{\exp^{(E_m - E_h)nF/RT}}{1 + \exp^{(E_m - E_h)nF/RT}}, \quad (3.1)$$

in which E_m and n , the number of electrons, were allowed to float. F is the Faraday constant, R is the gas constant, T is the

temperature and E_h is the standard reduction potential couple for DTT, which was taken to be -330 mV at pH 7 and 25°C .

3.11. Thiol-reductase activity assay

The turbidimetric insulin assay as outlined by Holmgren [40] was used to monitor thiol-reductase activity. *E. coli* thioredoxin (Trx) and human insulin were purchased from Sigma and reaction mixtures containing $3\ \mu\text{M}$ of protein and $2.5\ \text{mM}$ DTT were incubated in K_2HPO_4 , pH 8 followed by the addition of insulin to a final concentration of $0.17\ \text{mM}$. The absorbance change at $650\ \text{nm}$ caused by the precipitation of reduced insulin chains was monitored using a Cary 50 spectrophotometer every 60 s for up to 2 h. Controls were carried out with Trx in the absence of DTT, bovine serum albumin (BSA) in the presence of DTT and insulin with DTT.

4. Results

4.1. Sco^{SI} is over-expressed, folded and has two reactive Cys residues

An N-terminal His₆-tag fusion construct in which the first 23 amino acids of Sco^{SI} were absent was prepared. The design of this construct was based on bioinformatics analysis of the Sco^{SI} amino acid sequence in which an N-terminal transmembrane helix or a signal sequence (residues 1–21) for secretion with putative lipidation of Cys-22, which subsequently becomes the N-terminal amino acid upon cleavage by signal peptidase II, was predicted. The purified protein had a mass of $21\ 265.8$ (1.1) Da (predicted mass, $21\ 264$ Da) determined by denaturing ESI-MS. This mass corroborated that the N-terminal fused His₆-tag had been successfully removed by thrombin treatment during the purification stages (mass with His₆-tag $23\ 147.9$ Da). The visible region of the absorption spectra was featureless with a prominent peak in the UV region at $280\ \text{nm}$. Anaerobic treatment of the purified Sco^{SI} with DTT and subsequent removal by desalting under anaerobic conditions yielded a protein with accessible thiol groups as determined by the reduction of DTNB (5,5'-dithiobis-(2-nitrobenzoic acid) [41]. An average thiol:protein ratio of 1.6:1 was consistently determined, which is close to the expected ratio of 2:1 based on the presence of two Cys residues in the CXXXC motif (figure 1*b*). The far-UV CD spectra of reduced and oxidized Sco^{SI} are shown in figure 2*a* and are typical for a mixed secondary structure protein whereby the α -helical segments are dominant with some distortion in the 'classical' α -helical CD shape resulting from β -strand segments. Secondary structure content of these two Sco^{SI} forms was determined using DichroWeb and is reported in table 1.

4.2. Reduced apo-Sco^{SI} binds Cu(II)

To determine whether Sco^{SI} has affinity for Cu(II), reduced apo-Sco^{SI} was titrated with a Cu(II) solution. A number of distinct absorption bands in the UV-vis spectrum appear (figure 2*b*). The λ_{max} are similar, but not identical, to those reported for Cu(II)-Sco^{Bs} (354 , 450 and $545\ \text{nm}$) and have been attributed to arise from S(Cys)-Cu(II) charge transfer [42]. The absorbance increase at $362\ \text{nm}$ plotted as a function of $[\text{Cu(II)}]/[\text{Sco}^{\text{SI}}]$ reveals a steep linear transition with a break point at approximately 1 equivalent of Cu(II)

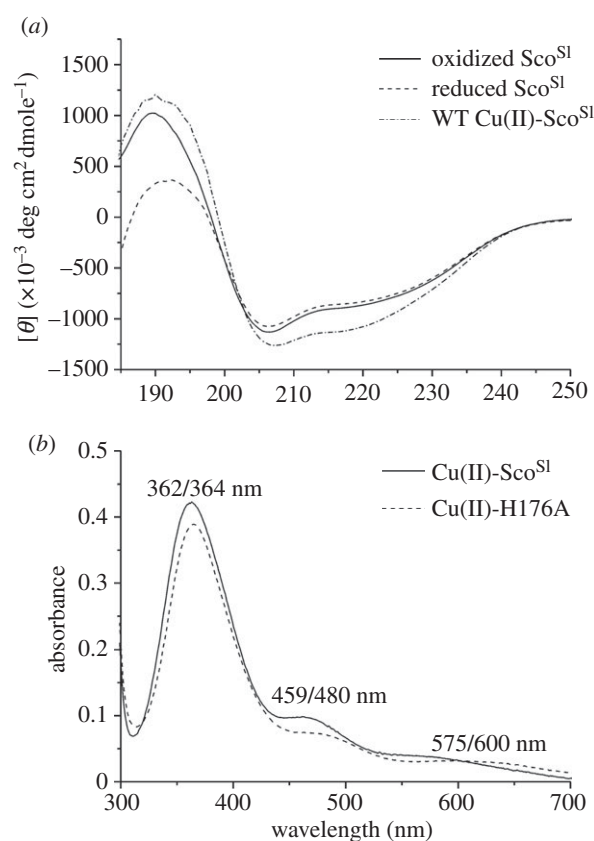


Figure 2. CD and visible absorption spectra of Sco^{SI} and the H176A mutant. (a) Far-UV CD spectra of apo-oxidized (disulphide), apo-reduced (free-thiol) and Cu(II)-loaded Sco^{SI}. (b) Visible absorbance spectra of Cu(II)-loaded Sco^{SI} and the H176A mutant. All spectra were recorded at 20°C , with protein concentrations ranging between 20 and $100\ \mu\text{M}$.

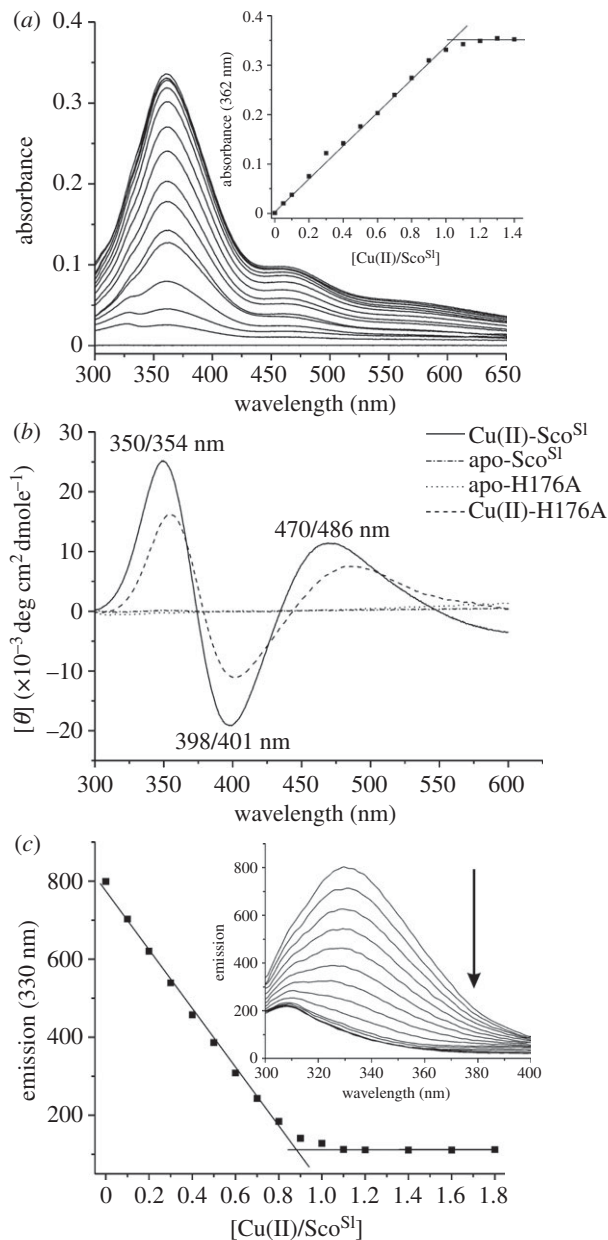
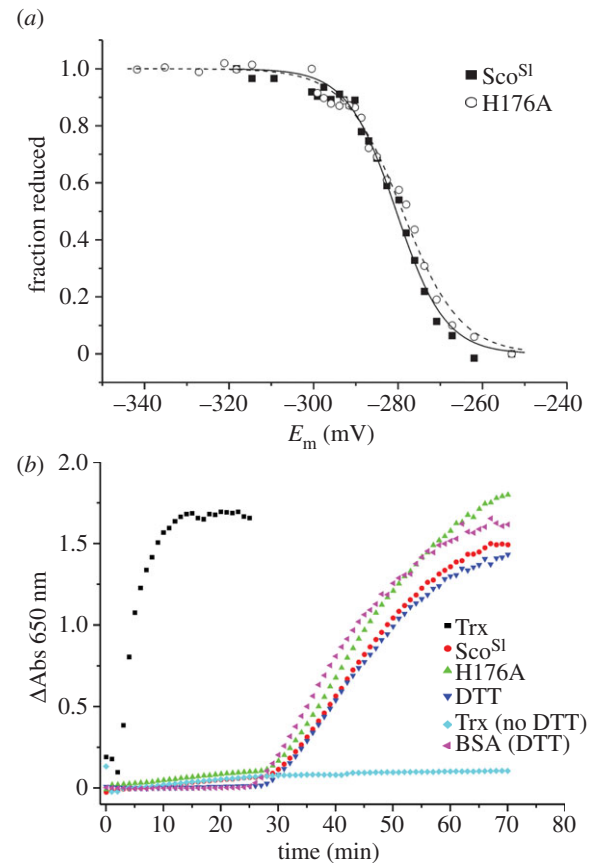
(figure 3*a*, inset), indicating a 1:1 binding stoichiometry with a strong affinity for Cu(II). In the presence of excess EDTA (up to 50-fold), the intensity of the absorption peaks in the UV-vis spectra of Cu(II)-Sco^{SI} remained unchanged over many days. The far-UV CD spectrum of Cu(II)-Sco^{SI} is similar to the apo-reduced or -oxidized forms (figure 2*a*) and thus consistent with no gross secondary structural change upon Cu(II) binding (table 1). The visible CD spectrum for the Cu(II)-Sco^{SI} complex is shown in figure 3*b* and has a number of peaks and troughs that probably arise from S(Cys)-Cu(II) charge transfer. A single Trp residue (W132) is present in Sco^{SI} (figure 1*b*). Excitation of reduced apo-Sco^{SI} at $280\ \text{nm}$ results in an emission spectrum with a peak maximum at approximately $330\ \text{nm}$, which upon addition of Cu(II) is quenched (figure 3*c*, inset). A plot of the emission intensity at $330\ \text{nm}$ versus $[\text{Cu(II)}]/[\text{Sco}^{\text{SI}}]$ indicates a 1:1 binding stoichiometry (figure 3*c*) consistent with the data from UV-vis spectroscopy.

4.3. Sco^{SI} possesses a redox active CXXXC motif but not thiol-disulphide reductase activity

To explore a possible role for apo-Sco^{SI} as a thiol-disulphide reductase, the mid-point redox potential (E_m) of the Cys residues in the CXXXC motif of apo-Sco^{SI} was first determined by measuring the difference in fluorescence intensity of W132 in the oxidized and reduced forms of apo-Sco^{SI} upon addition of DTT (figure 4*a*). The data fit to the Nernst equation (3.1) to give an E_m value of $-280\ \text{mV}$. An insulin

Table 1. Output from DichroWeb of average secondary structure content in the different forms of Sco^{SI} used in this study.

protein	α -helix (%)	β -sheet (%)	turn (%)	unordered (%)
oxidized Sco ^{SI}	27.3	17.1	20.9	34.7
reduced Sco ^{SI}	35.0	18.7	16.2	30.0
Cu(II)-Sco ^{SI}	34.6	17.3	18.0	30.0
oxidized H176A	29.2	15.1	19.9	35.8
reduced H176A	27.1	18.6	20.9	33.4
Cu(II)-H176A	26.1	21.0	21.7	31.2

**Figure 3.** Cu(II) binding to reduced apo-Sco^{SI}. (a) Changes in the UV-vis spectrum (pH 7.5, 20°C) of reduced apo-Sco^{SI} (110 μM) upon stepwise addition of 10 μM Cu(II)SO₄. Inset: the change in absorbance at 362 nm plotted as a function of [Cu(II)]/[Sco^{SI}]. (b) Visible CD spectra of Cu(II)-loaded and apo-reduced Sco^{SI} and the H176A mutant. (c) Inset: changes in the Trp emission spectrum (pH 7.5, 20°C) of reduced apo-Sco^{SI} (5 μM) upon titration with 0.5 μM of Cu(II)SO₄ with the emission at 330 nm plotted as a function of [Cu(II)]/[Sco^{SI}]. The arrow indicates the direction of the emission change. The stoichiometry of the reaction in both (a) and (c) is indicated by the intersection of the two lines.**Figure 4.** Mid-point redox potential and thiol-disulphide reductase activity of Sco^{SI} and the H176A mutant. (a) Plot of fraction of reduced apo-Sco^{SI} and the H176A mutant calculated from the fluorescence intensity at 330 nm as a function of the cell potential. The solid and dashed lines show the individual fits to the data for the respective proteins using equation (3.1). (b) Insulin reductase activity of *E. coli* Trx, Sco^{SI} and the H176A mutant in the presence of 2.5 mM DTT, along with a number of controls, DTT only, BSA + DTT and Trx with no DTT. The precipitation of insulin was monitored at 650 nm. Sco^{SI} or the H176A mutant do not show thioredoxin-like activity in this assay.

precipitation assay with *E. coli* Trx as a control was used to assess whether Sco^{SI} displayed thiol-disulphide reductase activity [40]. From the data presented in figure 4b, it is clear that Trx displays catalytic activity, whereas the long lag-phase followed by the slow increase in ΔA_{650} for apo-Sco^{SI} is equivalent to the assay with DTT only and BSA with DTT (figure 4b), i.e. no catalytic activity. This indicates that despite having a redox active CXXXC motif, Sco^{SI} does not possess catalytic thiol-disulphide reductase activity in the apo-form.

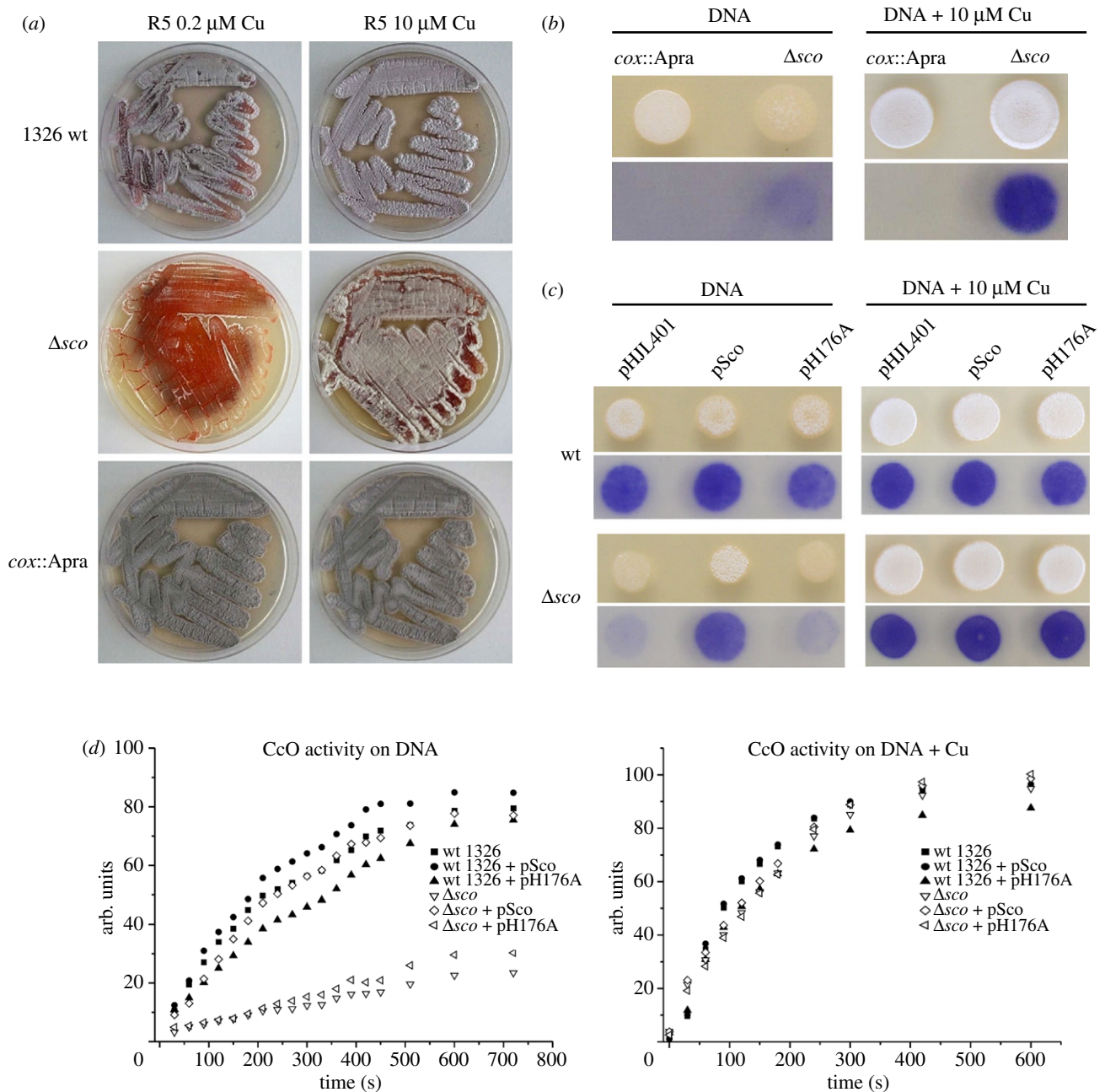


Figure 5. Morphology and CcO activity in wt and mutant strains of *S. lividans*. (a) *S. lividans* 1326 (wt), the Δsco and the $cox::Apra$ mutants were grown on R5 and R5 supplemented with 10 μM Cu(II) for 5 days. (b) The top two frames show the growth of the $cox::Apra$ and Δsco mutants on DNA medium and DNA supplemented with 10 μM Cu(II). Drops of 10 μl containing 1000 spores were spotted on the plates and incubated for 48 h. The appearance of the white fluffy aerial mycelium and grey spores demonstrates that a strain is capable of full morphological development. The lower two frames show the *in vivo* detection of CcO activity with TMPD as substrate. The blue colour is the result of TMPD conversion to indophenol blue by CcO. (c) Morphology and CcO activity of wt and Δsco mutant transformed with empty vector (pHL401), pHL401 containing *sco* under its own promoter (pSco) and pHL401 expressing the H176A mutant (pH176A) on DNA plates and DNA supplemented with 10 μM Cu(II). (d) CcO activity detected by the TMPD assay and recorded by digital imaging of the plates. The IMAGEJ software (<http://imagej.nih.gov/ij/>) was used to calculate average pixel intensities (s.d. varied from 1% to 15%) of the indophenol blue stained mycelium as seen in (b) and (c). After correction for background reading, the data were multiplied by -1 and plotted as arbitrary units against time.

4.4. Sco^{S1} is critical for morphological development and CcO activity at low exogenous Cu levels

The function of Sco^{S1} was probed by comparing morphological development and CcO activity of wt *S. lividans* 1326 and Δsco strains. The wt strain shows almost full development, aerial hyphae and spore production on R5 medium, and a clear stimulation of development on R5 supplemented with 10 μM Cu(II) (figure 5a). The Δsco mutant, on the other hand, is not capable of switching from vegetative to aerial growth and spore production on R5 medium (less than

0.2 μM Cu(II)), whereas development is clearly restored upon addition of 10 μM Cu(II) (figure 5a). This demonstrates that Sco^{S1} has a critical role in the onset of aerial hyphae formation at low Cu availability. A similar effect on development of the Δsco strain is seen on DNA medium under low levels of exogenous Cu(II) but development is once more restored on addition of 10 μM Cu(II) (figure 5b). A $cox::Apra$ strain, in which the genes *SL2155* and *SL2156* encoding for subunits I and II of the *aa₃*-type CcO have been removed, appears to be viable and not defective in development under low or elevated Cu(II) (figure 5a,b). However,

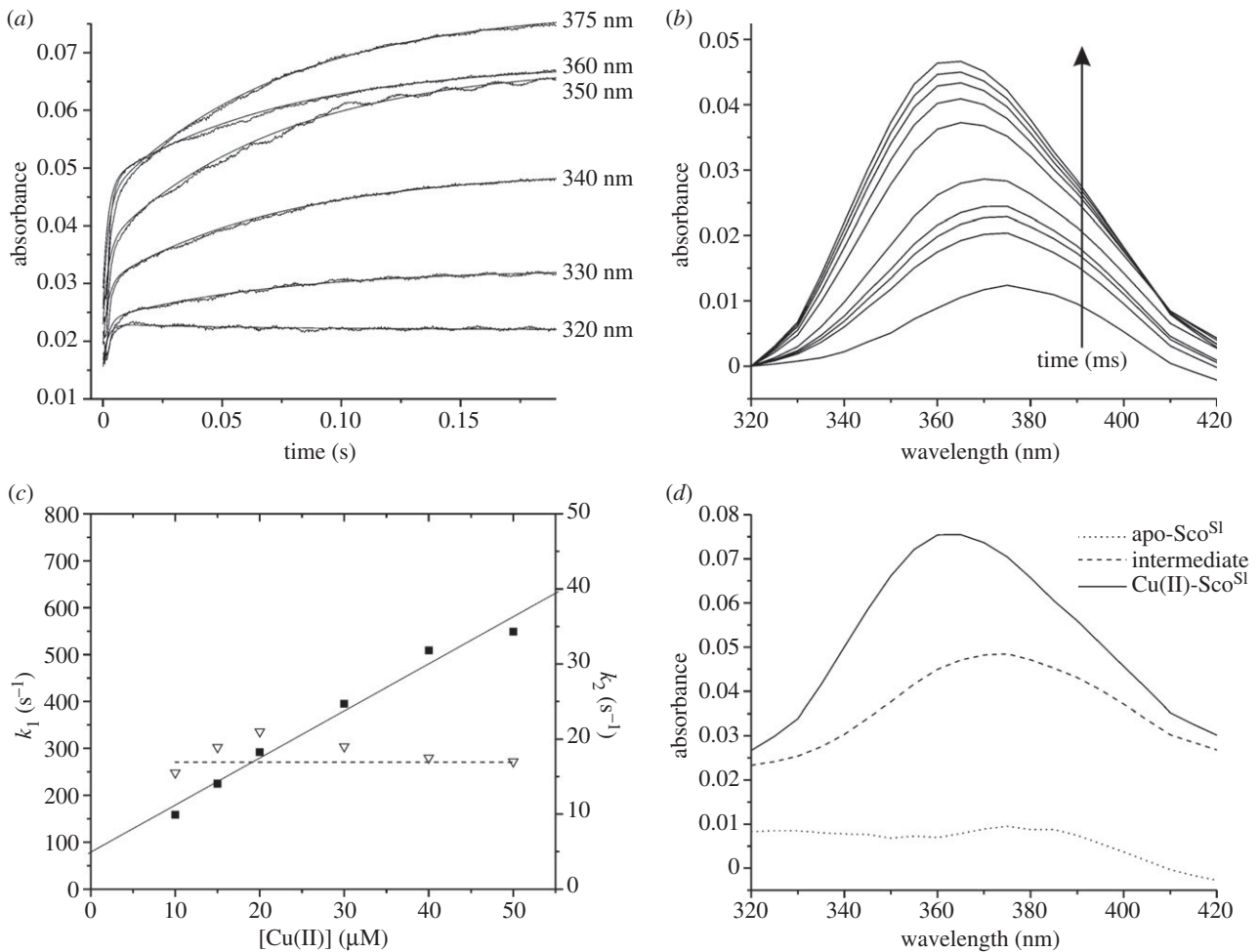


Figure 6. Stopped-flow kinetics of Cu(II) binding to Sco^{SI}. (a) Time courses at the indicated wavelengths observed on reacting 15 μM Sco^{SI} with 50 μM Cu(II). (b) Spectra constructed at the following times, 3, 4.5, 6, 16.5, 60, 87, 114, 200 ms, after mixing from the time courses given in (a). (c) First-order rate constants for the ‘fast’ (k_1 ; filled squares) and ‘slow’ (k_2 ; open triangles) phase of Cu(II) binding to Sco^{SI} as a function of [Cu(II)]. The solid lines indicate a fit to the first rapid phase to obtain a second-order rate constant, and the dashed line indicates the independence of the rate of the slower phase (k_2) on [Cu(II)]. (d) Spectra obtained from global fitting of the data presented in (a) and (b) to the model $a > b > c$.

development is somewhat delayed compared with the wt on both R5 and DNA medium. CcO activity was tested for in the *cox::Apra* mutant by using TMPD as substrate. It is apparent from figure 5b that no indophenol blue was observed and this is therefore consistent with the absence of TMPD oxidation by the *aa*₃-type CcO, but also points to the absence of any other Cu/haem oxidases that may be upregulated in the absence of the *aa*₃-type (the *bo*-type and *ba*₃-type Cu/haem oxidases that do not react with TMPD are absent in *S. lividians*). In line with a putative function of Sco^{SI} in the assembly of the Cu_A site, the CcO activity in the Δsco mutant (figure 5b) is strongly reduced and maximal 25 per cent of the activity is found in the wt strain (figure 5c,d). Increasing the Cu(II) concentration in the medium clearly restores CcO activity to wt levels in the Δsco mutant, corroborating the observation with development that Sco^{SI} is also not required for maturation of CcO at elevated Cu(II) levels.

4.5. Sco^{SI} binds Cu(II) rapidly in a biphasic process

On mixing reduced apo-Sco^{SI} with excess Cu(II), a biphasic time course was observed at all wavelengths examined (figure 6a). The rapid phase occupied the first 10 ms after mixing and was followed by a slower phase taking approximately 200 ms to complete (figure 6a). This behaviour

suggests that the formation of the final Cu(II)-Sco^{SI} complex from the apo-protein passes through an intermediate. The time-dependent amplitudes of the time courses were used to construct the time-resolved spectra given in figure 6b. The observed rate constant for the faster process is seen to be linearly dependent on [Cu(II)] up to approximately 500 s^{-1} . This phase therefore represents the second-order process in which Cu(II) binds initially to form an intermediate. Fitting of this dependency yields a value of the second-order rate constant (k_1) of $1 \times 10^7 \text{ M}^{-1} \text{ s}^{-1}$. It is evident that at a [Cu(II)] of zero there is a significant value of the extrapolated pseudo first-order rate constant (79 s^{-1}) (figure 6c). This value may be assigned to the dissociation rate constant (k_{-1}) of Cu(II) from this intermediate. Taken together, these values allow an equilibrium binding constant (K_b) of $1.3 \times 10^5 \text{ M}^{-1}$ (k_1/k_{-1}) to be calculated for Cu(II) binding to the intermediate. A similar K_b value was determined from the examination of the amplitudes of the fast process as a function of [Cu(II)] (not shown). The slower kinetic process that leads from the intermediate to the final product showed little dependency on [Cu(II)], maintaining a value of approximately 20 s^{-1} at all [Cu(II)] used (figure 6c). This behaviour indicates that the step forming the final product from the intermediate involves no further Cu(II) binding but an internal rearrangement within the Cu(II) protein

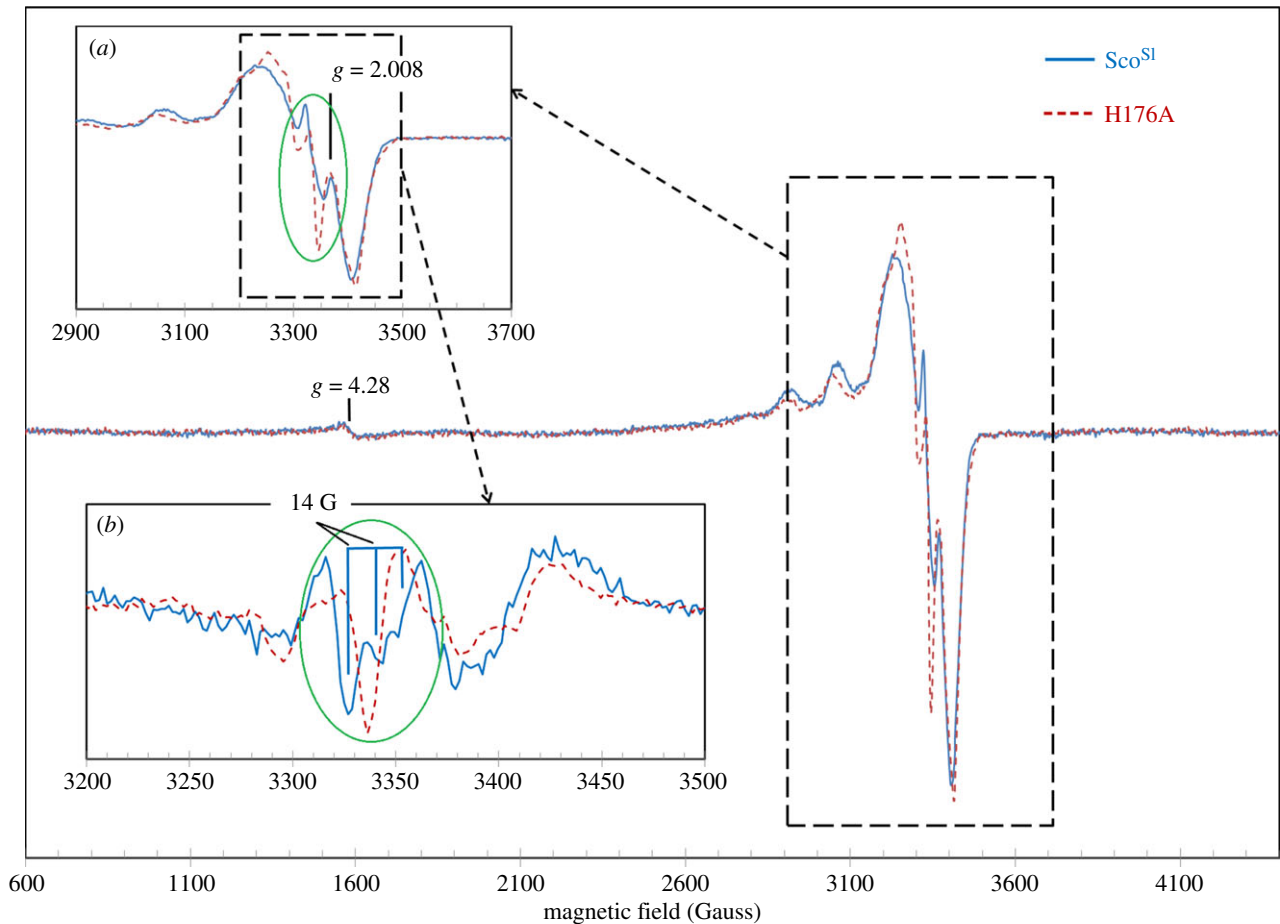


Figure 7. EPR spectra of Cu(II)-loaded Sco^{S1} and the H176A mutant. The superimposed spectra within the dashed line box are shown in greater detail in inset (a). Derivatives by field have been taken of both spectra and inset (b) shows the second derivatives of the EPR absorption. The most rapidly changing part of the spectra, as the field increases, is highlighted by an oval in both first (inset a) and second derivatives (inset b) of the EPR absorption. The latter representation demonstrates that instead of a single peak in the H176A mutant, there is a triplet with a 14 G separation between the lines in the wt protein spectrum. Instrumental conditions were as follows: microwave frequency $\nu_{MW} = 9.466$ GHz, microwave power $P_{MW} = 3.181$ mW, modulation frequency $\nu_m = 100$ kHz, modulation amplitude $A_m = 5$ G, time constant $\tau = 81.9$ ms, scan rate $V = 22.6$ G s⁻¹, number of scans per spectrum NS = 1, each spectrum represents an average of three spectra obtained from three independent samples.

complex. Based on a sequential model with one intermediate, global fitting of the kinetic profiles in figure 6*a,b* gave rise to the spectral features of the intermediate and the final product as shown in figure 6*d*. It may be observed that the intermediate has a spectrum distinct from the final complex, having a λ_{max} at 375 nm and a considerably lower extinction coefficient (figure 6*d*). These spectral features are similar to those reported for the binding of Cu(II) to Sco^{Bs} [43]. The mechanism described earlier, namely a rapid second-order binding process leading to a spectrally distinct intermediate that then rearranges to form a final complex, is identical to that proposed for Sco^{Bs} [43] but in the case of Sco^{S1} the rate constants are considerably larger.

4.6. H176 is a Cu(II) ligand and stabilizes the cupric state

To explore further the mechanistic and functional properties of Cu(II)-Sco^{S1}, the effect of removing a putative first coordination sphere Cu(II) ligand was assessed by creating the H176A mutant. The EPR spectra of Cu(II)-loaded wt and H176A mutant are typical for cupric ions [44] (figure 7). The perfect fit of the baselines, including the $g = 4.3$ signal from the adventitious ferric iron in rhombic

coordination [45], indicates that the differences in the EPR spectra of the two proteins, although small, are significant. An additional hyperfine structure is present in the wt spectrum (figure 7*a*, inset). This is better observed from the derivatives of the spectra (figure 7*b*, inset), showing that wt Sco^{S1} has a triplet structure, whereas the mutant H176A has a single line. The separation of these three components in Gauss (approx. 14 G) is consistent with an interaction of the electronic spin with a nitrogen nucleus [46]. Thus, the differences in the EPR spectra of the two proteins can be explained by the presence of an additional N atom in the vicinity of the Cu(II) atom in the wt Sco^{S1}, whereas such an atom is absent in the H176A mutant, strongly suggesting that His176 is a Cu(II) ligand in Sco^{S1}.

The far-UV CD spectra of the reduced and oxidized H176A Sco^{S1} mutant are shown in figure 8*a* and the deconvolution using DichroWeb reported in table 1. The H176A mutant readily bound Cu(II) with slight shifts in λ_{max} compared with the wt protein (figure 2*b*). Stoichiometric Cu(II) binding was further corroborated from the decay of the W132 emission in the fluorescence spectrum (figure 8*b*) and the presence of a visible CD spectrum similar to that of wt Sco^{S1}, but with significant wavelength shifts of the peaks and trough (figure 3*b*). At Cu(II) stoichiometries of 1 or greater, the absorption bands in the UV-vis spectra

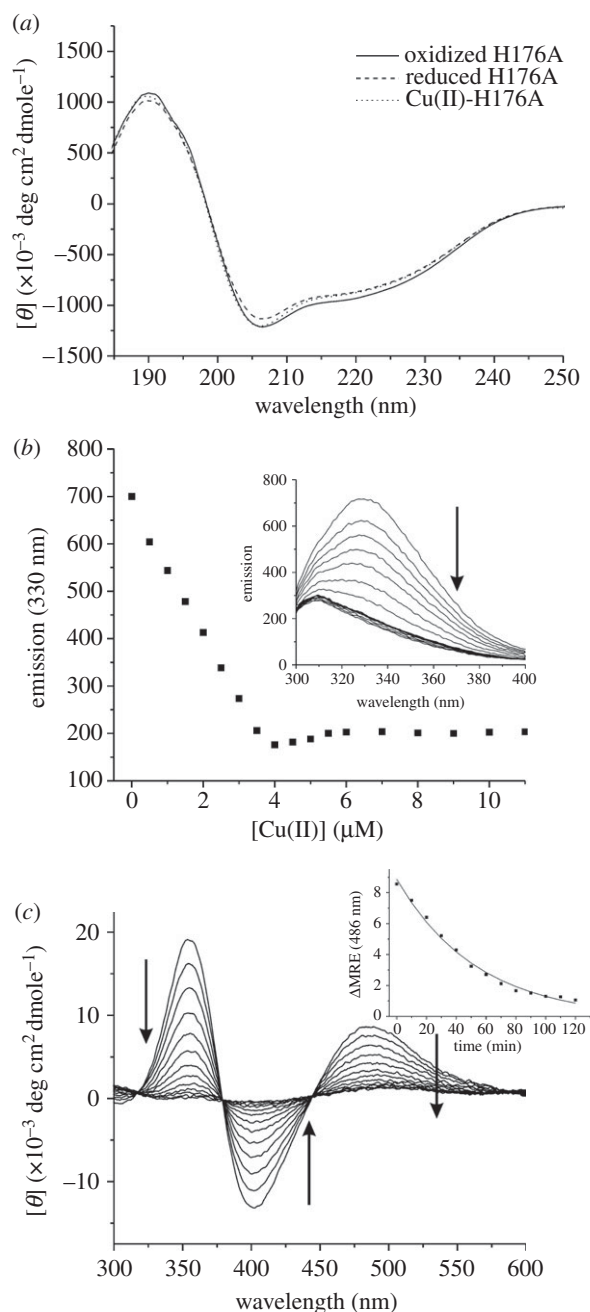


Figure 8. Cu(II) binding to the H176A mutant. (a) Far-UV CD spectra of apo-oxidized (disulphide), apo-reduced (free-thiol) and Cu(II)-loaded H176A. (b) Changes in the Trp emission spectrum of reduced apo-H176A (inset) upon titration with 0.5 μM of Cu(II)SO_4 with the emission at 330 nm plotted as a function of $[\text{Cu(II)}]/[\text{H176A}]$. The arrow indicates the direction of the emission change up to 1 equivalent of Cu(II), with a slight increase and plateau observed above 1 equivalent of Cu(II). (c) Visible CD spectrum for the H176A mutant following addition of 1 equivalent of Cu(II). The spontaneous decay over time of the visible bands are indicated by arrows, and the inset is an example of a plot of mean residue ellipticity (MRE) at 486 nm versus time fitted to a single exponential decay function to give a decay rate constant (k) for the process. All spectra were recorded at 20°C, with protein concentrations ranging between 5 and 400 μM .

spontaneously bleach, and a slight but significant increase in the W132 emission is observed (figure 8b). Similarly, the absorption bands in the visible CD spectrum spontaneously decay with time at Cu(II) stoichiometries of 1 or greater, with a decay rate, k_{red} , of $3.1 \times 10^{-4} \text{ s}^{-1}$ (figure 8c, inset). The observation that the W132 emission does not return to apo-Sco^{Sl} intensities suggests that an autoreduction process is occurring

resulting in Cu(I)-H176A. Finally, an E_m of -279 mV for the CXXXC motif in the H176A mutant was determined (figure 4a), and from the insulin precipitation assay catalytic thiol-disulphide reductase activity was absent for the apo-H176A (figure 4b).

4.7. Complementation of the Δsco strain with pSco^{Sl} restores function but pH176A does not

To test the effect of the H176A mutant on development and CcO activity, complementation experiments with low copy number plasmids expressing the wt Sco^{Sl} gene (pSco) and the H176A mutant (pH176A) were carried out. For transformation of pSco and pH176A into the 1326 wt strain, no effect on growth or development on DNA at low $[\text{Cu}]$ or with 10 μM Cu(II) was observed. However, a small and reproducible effect on CcO activity was observed on DNA without added Cu(II). Figure 5d illustrates that the H176A mutation has a negative effect on CcO activity in the wt strain, whereas the wt Sco protein has a small positive effect. In the Δsco mutant, the development and CcO activity under low Cu(II) concentrations are restored to near wt 1326 levels upon transformation with pSco (figure 5c,d). However, pH176A was not capable of restoring development or CcO activity to wt levels in the Δsco mutant although a small increase in activity is observed in the absence of exogenous Cu(II) (figure 5d). We also note that the time courses for the TMPD assays are multiphasic in the absence of added Cu(II). At 10 μM Cu(II), the development and CcO activity in all Δsco transformants on DNA are restored to wt levels (figure 5c,d), and the TMPD time courses now concur to a single phase (figure 5d). Taken together, these data indicate that the phenotype and reduced CcO activity in the Δsco mutant can be attributed completely to the absence of Sco^{Sl}, and that despite the H176A mutant being able to stoichiometrically bind Cu(II) *in vitro*, it is not capable of supporting wt levels of development and CcO activity at low Cu(II) concentrations *in vivo*.

4.8. The H176A mutant reveals a spectrally distinct intermediate on binding Cu(II)

The kinetics of Cu(II) binding to the H176A mutant were studied in a similar manner to those of the wt Sco^{Sl} and revealed rapid formation of an intermediate that eventually yielded the final complex. Similar analysis to that undertaken for the wt protein shows that the intermediate formed in the H176A mutant is distinctly different in spectral characteristics from that shown in figure 6d, with a λ_{max} now at 365 nm (figure 9a). The initial rapid kinetic process again displayed a Cu(II) concentration dependence but now the pseudo first-order rate constant plateaued at approximately 170 s^{-1} (figure 9b). Fitting of the initial linear portion of the rate dependence at low $[\text{Cu(II)}]$ yields a second-order rate constant ($k_{1\text{-H176A}}$) of $2 \times 10^6 \text{ M}^{-1} \text{ s}^{-1}$ and a dissociation rate constant ($k_{-1\text{-H176A}}$) of 30 s^{-1} . Thus, the rates of binding and dissociation appear lower than in wt Sco^{Sl} and correspond to a slightly lower K_b for the intermediate complex of $6.7 \times 10^4 \text{ M}^{-1}$. The slow process again shows very little dependence on $[\text{Cu(II)}]$, yielding a first-order rate constant ($k_{2\text{-H176A}}$) of approximately 5 s^{-1} , again significantly slower than wt.

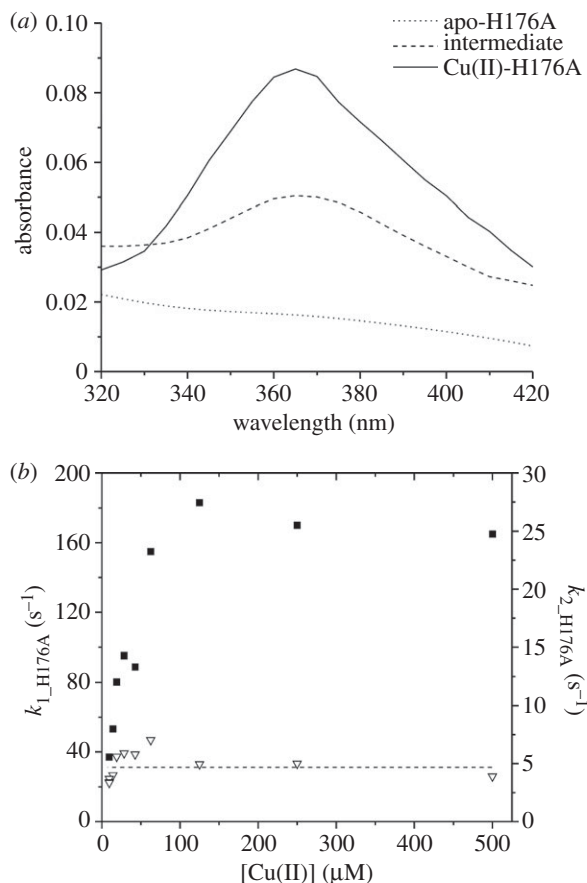


Figure 9. Stopped-flow kinetics of Cu(II) binding to the H176A mutant. (a) Global fitting of time courses at wavelengths from 420 to 320 nm to a sequential model $a > b > c$. (b) First-order rate constants for the ‘fast’ (k_{1_H176A} ; filled squares) and ‘slow’ (k_{2_H176A} ; open triangles) phases of Cu(II) binding to the H176A as a function of Cu(II) concentration. The dashed line indicates the [Cu(II)] independence for k_{2_H176A} .

5. Discussion

5.1. The *sco* operon of *Streptomyces lividans* encodes a gene for a Cu(II) binding Sco protein

Previous studies with Cu(II)-Sco proteins from human, yeast and *B. subtilis* [16,20,23,42,47] have identified a type 2 Cu centre, with UV-vis absorption spectra displaying similar features to the red cupredoxin nitrosocyanin that binds Cu(II) in a square pyramidal geometry using two N(His) ligands, a single S(Cys), a solvent water molecule in the basal plane and a coordinating O(Glu) as the axial ligand [48]. The major absorption band in the visible region for Cu(II)-nitrosocyanin (approx. 390 nm) and Cu(II)-Sco (approx. 360 nm) are reported to arise from S(Cys)-Cu(II) charge transfer dominated by σ rather than π orbital interactions as is the case in cupredoxins [49]. The absorption spectra for Cu(II)-Sco^{Sl} and the H176A mutant (figure 2b) have the same overall features as Cu(II)-Sco^{Bs} [23], the Cu(II)-H135A mutant of Sco^{Bs} [50] and the eukaryotic Sco1 proteins from yeast and human [20,47], corroborating that the 3966 gene, part of the *sco* operon in *S. lividans*, encodes for a Cu(II) binding Sco protein. From the EPR data (figure 7), a contribution to the Cu(II) coordination sphere from the imidazolate N of His176 is apparent, yet the H176A mutant retains the ability to bind Cu(II) with the same stoichiometry

and a similar affinity (derived from kinetic studies) as the wt protein. However, in the absence of the His ligand, the Cu(II)-Sco^{Sl} is susceptible to autoreduction to Cu(I). This has also been reported for the H135A mutant of Sco^{Bs} but occurs an order of magnitude faster ($1 \times 10^{-3} \text{ s}^{-1}$) compared with the H176A Sco^{Sl} mutant ($3.1 \times 10^{-4} \text{ s}^{-1}$) [50].

5.2. Sco^{Sl} is unlikely to function as a thiol-disulphide reductase

An alternative ‘non-Cu’ role for bacterial Sco proteins as thiol-disulphide reductases has been postulated, based on the ability of Sco^{Tt} to reduce the Cys residues of the Cu_A site in CcO, thus facilitating Cu delivery by the periplasmic Cu(I) chaperone PCu_AC [18]. To maintain Sco^{Tt} in the reduced state competent for redox function, a supply of reducing equivalents in the periplasmic environment is required and thus a redox role has been questioned [51]. Although we have not looked at the same reaction with the *S. lividans* proteins, namely the reduction of the Cys residues in the Cu_A domain of CcO by Sco^{Sl}, our *in vitro* assay clearly shows no enzymatic enhancement of thiol-disulphide reductase activity for apo-Sco^{Sl} compared with *E. coli* Trx (figure 4b). Our findings are thus in keeping with results from a similar assay with human Sco1, where thiol-disulphide activity was not detected [20]. An E_m of -280 mV for the CXXX motif of Sco^{Sl} has been determined in this study and is comparable to that of the E_m for the CXXC motif of Trx (-270 mV). However, these similarities in E_m are not sufficient to infer catalytic activity in apo-Sco^{Sl} when present in an insulin precipitation assay where Trx clearly possesses thiol-disulphide activity and, therefore, catalytic activity is not inherent on the E_m of the disulphide motif in the respective proteins. Furthermore, the E_m of the H176A mutant is unaffected, and this finding coupled with the observation that Cu(I) is the more stable oxidation state of the Cu bound H176A has ramifications for interpreting the lack of development and CcO activity *in vivo* with this mutant (vide infra).

5.3. At low Cu levels morphogenesis and CcO activity require the assistance of Cu(II)-Sco^{Sl}

The absence of indophenol blue from the TMPD assay in the *cox::Apra* strain is consistent with no activity from the *aa3*-type oxidase (figure 5b). However, in the Δ *sco* mutant indophenol blue is detected, albeit to a much lower level than in the wt strain or upon addition of exogenous Cu(II) (figure 5b-d). Therefore, a basal level of active CcO is present under low Cu and in the absence of Sco^{Sl}, suggesting that the Cu_A site of CcO is metallated and active. Despite the presence of low levels of CcO activity in the Δ *sco* mutant, the developmental switch from vegetative to aerial mycelium clearly does not occur in the absence of Sco^{Sl} (figure 5a). The morphological phenotype for the Δ *sco* mutant coinciding with the significantly decreased CcO activity compared with the wt strain is restored upon complementation with pSco (figure 5c,d). This is therefore evidence that the switch from vegetative to aerial growth in *S. lividans* is dependent on Sco^{Sl} with a clear correlation to CcO biogenesis implied. It therefore appears that when Sco^{Sl} is present CcO is metallated much more efficiently at low [Cu]. In contrast at elevated [Cu], the development block is lifted, and CcO

activity is restored in the Δsco mutant, indicating that under these conditions the role of Sco^{SI} is bypassed with Cu being delivered to the Cu_A site through another means or by spontaneous self-assembly.

The H176A mutant binds Cu(II) readily, but is susceptible to an autoreduction process that results in the Cu(I)-bound state. The inability of the H176A mutant to restore CcO activity in the Δsco mutant under low [Cu(II)] may therefore be due to the mutant's inability to maintain the Cu(II) oxidation state, with the Cu(I) bound state no longer active in transferring Cu to the Cu_A site. The absence of CcO activity and development with this mutant further questions the role of the proximal 3965 gene that encodes for a $PCu_A C$ -like protein in the co-factoring of the Cu_A domain. Recent data from *R. sphaeroides* are in accordance with our data supporting the maturation of the Cu_A site proceeding only via a Sco-like protein, PrrC, with a $PCu_A C$ -like protein having an as yet undefined role [52]. Although not tested in this study, it is conceivable that Cu plays a role in thiol-disulphide redox activity of Sco^{SI} and that the stabilization of the cuprous state by the H176A mutant inhibits any electron donation involving Cu oxidation. Further studies into this role are planned.

5.4. A second Cu(II)- Sco^{SI} target is required for aerial hyphae formation in *Streptomyces lividans*

As indicated, despite the presence of low levels of CcO activity in the Δsco mutant, the developmental switch from vegetative to aerial mycelium clearly does not occur in the absence of Sco^{SI} (figure 5a). If deleting the *sco* gene would be equivalent to only strongly reducing the CcO activity, the phenotypes of the Δsco and *cox::Apra* mutants would be expected to be very similar. However, this is not the case as the *cox::Apra* mutant is still capable of full development at low [Cu(II)], whereas the Δsco mutant is stalled in the vegetative growth phase (figure 5a). This leads us to speculate that a second Sco^{SI} target is involved in initiation of aerial hyphae formation. This Cu- Sco^{SI} target is likely to be a cuproenzyme and its identification is currently in progress. Furthermore, the observation that a strain lacking the terminal *aa₃*-type oxidase can survive and initiate a full life cycle demonstrates that another terminal oxidase, incapable of reacting with TMPD, can take over respiration (figure 5b). Genes for the terminal quinol *bd*-type oxidase are present in *S. lividans* and is thus a good candidate.

5.5. Sco^{SI} captures exogenous Cu(II) rapidly

While our data establish that Sco^{SI} acts as a Cu(II)-metallochaperone, how it acquires Cu(II) *in vivo* is not known. Sco^{SI} is exported via the secretory (Sec)-pathway so is likely to obtain Cu once folded in the extracellular environment through a ligand-exchange interaction with another Cu-chaperone [51]. Under low Cu levels, it is expected that the cells' most efficient chaperone and scavenging systems operate, facilitating the efficient delivery of Cu to required locations, consistent with our *in vivo* data for Sco^{SI} at low [Cu]. An emerging paradigm is that periplasmic (and possibly extracellular) cuproproteins may obtain Cu not from periplasmic or extracellular pools but from Cu that has been routed via the cytosol and delivered by P_1 -type ATPases [53]. Regardless of how Sco^{SI} is co-factored *in vivo*, the

mechanism through which Cu(II) binds to apo- Sco^{SI} *in vitro* may best be understood through figure 10. The loops containing the Cu binding Cys residues and the His residue in Sco proteins (figure 1b) have been reported to be highly dynamic in the absence of Cu [22]. Therefore, the apo- Sco^{SI} can be considered to have multiple conformations in equilibrium with one another, with some possessing a pre-formed Cu(II) binding site (figure 10). Rapid freeze EPR experiments with Sco^{BS} have indicated prior to Cu(II)-thiolate coordination an initial capture complex exists composed of an equatorial N-Cu(II)-N complex, likely involving H135 and a N atom, possibly from a backbone amide [54]. By including this information in our model, we envisage that an initial capture complex comes close to one of the thiols and forms a site to which Cu(II) binds in a second-order process to form an intermediate in which the Cu(II) is coordinated to one thiol, His176 and a backbone amide N with a $\lambda_{max} = 375$ nm (figure 10). This spectroscopically observable intermediate is consistent with absorption spectra reported for the single Cu(II)-thiolate coordinating mutants, C45A and C49A, in Sco^{BS} [42] where a λ_{max} of approximately 380 nm is observed, assigned to coordination of Cu(II) by a single Cys, His-135 and two unknown O/N ligands [42]. The protein dynamics in the apo-form is very rapid compared with Cu(II) binding to the pre-formed site and thus the spectral change we observe, dominated by binding to the thiol, is second-order. Once formed, the intermediate undergoes rearrangement in which the Cu(II)-complex is presented to the second thiol ligand leading to the final Cu(II)- Sco^{SI} complex with a two-fold increase in absorption and a λ_{max} shift to 362 nm. This rearrangement occurs with k_2 approximately 20 s^{-1} and a rate constant for dissociation (k_{-2}) based on experiments with high concentrations of Cu(II) chelators of less than 10^{-6} s^{-1} (data not shown). While the binding of Cu(II) to form the intermediate is relatively weak ($K_b = 10^5\text{ M}^{-1}$), coupling to the rearrangement that has an estimated equilibrium constant in favour of the final complex of 10^7 (k_2/k_{-2}) yields an overall affinity for Cu(II) greater than 10^{12} M^{-1} . Although it appears that Cu(II) capture undergoes a similar mechanism to that reported for Sco^{BS} , the rates for Sco^{SI} are considerably quicker ($k_1 >$ three orders of magnitude, $k_2 >$ 10 times faster) indicating that Sco^{SI} is much more efficient in Cu(II) capture and rearrangement to the final complex. Our experiments were carried out under similar conditions (temperature, pH and ionic strength) and thus structural differences inherent between proteins or the dynamics of the loops housing the Cys and His residues governing the accessibility to Cu(II) may be a reason.

5.6. H176 plays a significant role in Cu(II) capture

The second-order rate constant for the H176A mutant is significantly lower than wt (figure 10) and probably reflects the differences in the geometry of the intermediate site in the absence of the His residue. The spectrum of the intermediate is again dominated by thiol binding but the spectral modulation (position of λ_{max}) given by His coordination is absent in the mutant compared with wt (figure 10). Interestingly, the His coordination appears to modulate the spectrum of the intermediate to a greater extent than the final complex in which both thiols bind to the Cu(II) (figure 10). The second-order nature of Cu(II) binding gives way to a first-order process at high [Cu(II)] (figure 9b), indicating

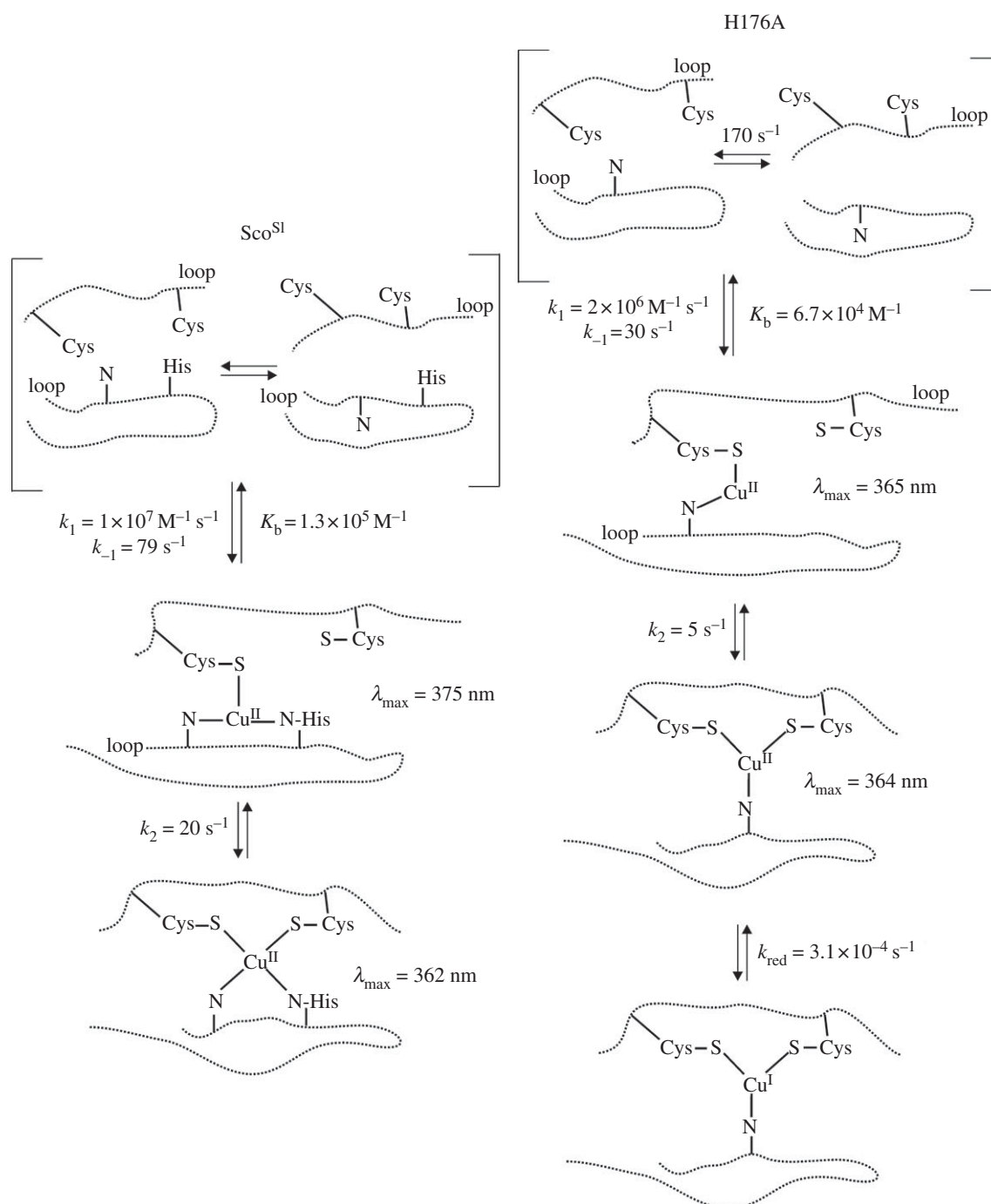


Figure 10. Mechanistic features of Cu(II) capture and binding to Sco^{SI} and the H176A mutant.

that the rate limit for the formation of the intermediate species becomes rate limited by the rate at which the binding site can be formed in the absence of H176. This may be unremarkable given the different stereochemistries required to bring a His-N into the site as opposed to an amide-N close to the thiol. The intermediate nevertheless rearranges, albeit on a slower time scale than wt, to form the final product, in keeping with the kinetic restraints imposed by the absence of the His. The absence of H176 therefore does not impede

Cu(II) capture but in its absence it becomes less efficient. H176 therefore clearly has a role in Cu(II) capture and is critical for maintaining the cupric form that is essential for the functional role of Sco^{SI}.

6. Acknowledgement

This study was supported by the University of Essex through the award of a PhD studentship to K.L.I.M.B.

References

1. Chater KF. 2006 *Streptomyces* inside-out: a new perspective on the bacteria that provide us with antibiotics. *Phil. Trans. R. Soc. B* **361**, 761–768. (doi:10.1098/rstb.2005.1758)
2. Ueda K, Tomaru Y, Endoh K, Beppu T. 1997 Stimulatory effect of copper on antibiotic production and morphological differentiation in *Streptomyces tanashiensis*. *J. Antibiot. (Tokyo)* **50**, 693–695. (doi:10.7164/antibiotics.50.693)
3. Keijser BJ, van Wezel GP, Canters GW, Kieser T, Vijgenboom E. 2000 The ram-dependence of

- Streptomyces lividans* differentiation is bypassed by copper. *J. Mol. Microbiol. Biotechnol.* **2**, 565–574.
4. Fujimoto M, Yamada A, Kurosawa J, Kawata A, Beppu T, Takano H, Ueda K. 2012 Pleiotropic role of the Sco1/SenC family copper chaperone in the physiology of *Streptomyces*. *Microbiol Biotechnol.* **5**, 477–488. (doi:10.1111/j.1751-7915.2011.00319.x)
 5. Kieser T, Hopwood DA. 1991 Genetic manipulation of *Streptomyces*: integrating vectors and gene replacement. *Methods Enzymol.* **204**, 430–458. (doi:10.1016/0076-6879(91)04023-H)
 6. Andreini C, Banci L, Bertini I, Rosato A. 2008 Occurrence of copper proteins through the three domains of life: a bioinformatic approach. *J. Proteome Res.* **7**, 209–216. (doi:10.1021/pr070480u)
 7. Worrall JAR, Vijgenboom E. 2010 Copper mining in *Streptomyces*: enzymes, natural products and development. *Nat. Prod. Rep.* **27**, 742–756. (doi:10.1039/B804465C)
 8. Dwarakanath S, Chaplin AK, Hough MA, Rigali S, Vijgenboom E, Worrall JAR. 2012 Response to copper stress in *Streptomyces lividans* extends beyond genes under direct control of a copper-sensitive operon repressor protein (CsoR). *J. Biol. Chem.* **287**, 17 833–17 847. (doi:10.1074/jbc.M112.352740)
 9. Worrall JAR, Machczynski MC, Keijsers BJ, di Rocco G, Ceola S, Ubink M, Vijgenboom E, Canters GW. 2006 Spectroscopic characterization of a high-potential lipo-cupredoxin found in *Streptomyces coelicolor*. *J. Am. Chem. Soc.* **128**, 14 579–14 589. (doi:10.1021/ja064112n)
 10. Ye Q, Imriskova-Sosova I, Hill BC, Jia Z. 2005 Identification of a disulfide switch in Bsco, a member of the Sco family of cytochrome *c* oxidase assembly proteins. *Biochemistry* **44**, 2934–2942. (doi:10.1021/bi0480537)
 11. Larkin MA *et al.* 2007 Clustal W and Clustal X, version 2.0. *Bioinformatics* **23**, 2947–2948. (doi:10.1093/bioinformatics/btm404)
 12. Glerum DM, Shtanko A, Tzagoloff A. 1996 SCO1 and SCO2 act as high copy suppressors of a mitochondrial copper recruitment defect in *Saccharomyces cerevisiae*. *J. Biol. Chem.* **271**, 20 531–20 535. (doi:10.1074/jbc.271.34.20531)
 13. Rentzsch A, Krummeck-Weiss G, Hofer A, Bartuschka A, Ostermann K, Rodel G. 1999 Mitochondrial copper metabolism in yeast: mutational analysis of Sco1p involved in the biogenesis of cytochrome *c* oxidase. *Curr. Genet.* **35**, 103–108. (doi:10.1007/s002940050438)
 14. Nittis T, George GN, Winge DR. 2001 Yeast Sco1, a protein essential for cytochrome *c* oxidase function is a Cu(I)-binding protein. *J. Biol. Chem.* **276**, 42 520–42 526. (doi:10.1074/jbc.M107077200)
 15. Mattatall NR, Jazairi J, Hill BC. 2000 Characterization of YpmQ, an accessory protein required for the expression of cytochrome *c* oxidase in *Bacillus subtilis*. *J. Biol. Chem.* **275**, 28 802–28 809. (doi:10.1074/jbc.M002741200)
 16. Andruzzi L, Nakano M, Nilges MJ, Blackburn NJ. 2005 Spectroscopic studies of metal binding and metal selectivity in *Bacillus subtilis* Bsco, a homologue of the yeast mitochondrial protein Sco1p. *J. Am. Chem. Soc.* **127**, 16 548–16 558. (doi:10.1021/ja0529539)
 17. Banci L, Bertini I, Cavallaro G, Ciofi-Baffoni S. 2011 Seeking the determinants of the elusive functions of Sco proteins. *FEBS J.* **278**, 2244–2262. (doi:10.1111/j.1742-4658.2011.08141.x)
 18. Abriata LA, Banci L, Bertini I, Ciofi-Baffoni S, Gkazonis P, Spyroulias GA, Vila AJ, Wang S. 2008 Mechanism of Cu(A) assembly. *Nat. Chem. Biol.* **4**, 599–601. (doi:10.1038/nchembio.110)
 19. Abajian C, Rosenzweig AC. 2006 Crystal structure of yeast Sco1. *J. Biol. Inorg. Chem.* **11**, 459–466. (doi:10.1007/s00775-006-0096-7)
 20. Williams JC, Sue C, Banting GS, Yang H, Glerum DM, Hendrickson WA, Schon EA. 2005 Crystal structure of human SCO1: implications for redox signaling by a mitochondrial cytochrome *c* oxidase ‘assembly’ protein. *J. Biol. Chem.* **280**, 15 202–15 211. (doi:10.1074/jbc.M410705200)
 21. Banci L, Bertini I, Calderone V, Ciofi-Baffoni S, Mangani S, Martinelli M, Palumaa P, Wang S. 2006 A hint for the function of human Sco1 from different structures. *Proc. Natl Acad. Sci. USA* **103**, 8595–8600. (doi:10.1073/pnas.0601375103)
 22. Balatri E, Banci L, Bertini I, Cantini F, Ciofi-Baffoni S. 2003 Solution structure of Sco1: a thioredoxin-like protein involved in cytochrome *c* oxidase assembly. *Structure* **11**, 1431–1443. (doi:10.1016/j.str.2003.10.004)
 23. Imriskova-Sosova I, Andrews D, Yam K, Davidson D, Yachnin B, Hill BC. 2005 Characterization of the redox and metal binding activity of Bsco, a protein implicated in the assembly of cytochrome *c* oxidase. *Biochemistry* **44**, 16 949–16 956. (doi:10.1021/bi051343i)
 24. Badrick AC, Hamilton AJ, Bernhardt PV, Jones CE, Kappler U, Jennings MP, McEwan AG. 2007 Prrc, a Sco homologue from *Rhodobacter sphaeroides*, possesses thiol-disulfide oxidoreductase activity. *FEBS Lett.* **581**, 4663–4667. (doi:10.1016/j.febslet.2007.08.058)
 25. Kieser TB, Buttner MJ, Chater KF, Hopwood DA. 2000 *Practical Streptomyces genetics*. Norwich, UK: John Innes Foundation.
 26. Fedoryshyn M, Welle E, Bechthold A, Luzhetskyy A. 2008 Functional expression of the Cre recombinase in actinomycetes. *Appl. Microbiol. Biotechnol.* **78**, 1065–1070. (doi:10.1007/s00253-008-1382-9)
 27. Vara J, Lewandowska-Skarbek M, Wang YG, Donadio S, Hutchinson CR. 1989 Cloning of genes governing the deoxysugar portion of the erythromycin biosynthesis pathway in *Saccharopolyspora erythraea* (*Streptomyces erythreus*). *J. Bacteriol.* **171**, 5872–5881.
 28. van Wezel GP, White J, Hoogvliet G, Bibb MJ. 2000 Application of redD, the transcriptional activator gene of the undecylprodigiosin biosynthetic pathway, as a reporter for transcriptional activity in *Streptomyces coelicolor* A3(2) and *Streptomyces lividans*. *J. Mol. Microbiol. Biotechnol.* **2**, 551–556.
 29. Green GN, Gennis RB. 1983 Isolation and characterization of an *Escherichia coli* mutant lacking cytochrome *d* terminal oxidase. *J. Bacteriol.* **154**, 1269–1275.
 30. Mueller JP, Taber HW. 1989 Isolation and sequence of ctaA, a gene required for cytochrome *aa3* biosynthesis and sporulation in *Bacillus subtilis*. *J. Bacteriol.* **171**, 4967–4978.
 31. Gasteiger E, Gattiker A, Hoogland C, Ivanyi I, Appel RD, Bairoch A. 2003 ExPASy: the proteomics server for in-depth protein knowledge and analysis. *Nucleic Acids Res.* **31**, 3784–3788. (doi:10.1093/nar/gkg563)
 32. Whitmore L, Wallace BA. 2004 DichroWeb, an online server for protein secondary structure analyses from circular dichroism spectroscopic data. *Nucleic Acids Res.* **32**, W668–W673. (doi:10.1093/nar/gkh371)
 33. Whitmore L, Wallace BA. 2008 Protein secondary structure analyses from circular dichroism spectroscopy: methods and reference databases. *Biopolymers* **89**, 392–400. (doi:10.1002/bip.20853)
 34. Compton LA, Johnson Jr WC. 1986 Analysis of protein circular dichroism spectra for secondary structure using a simple matrix multiplication. *Anal. Biochem.* **155**, 155–167. (doi:10.1016/0003-2697(86)90241-1)
 35. Manavalan P, Johnson Jr WC. 1987 Variable selection method improves the prediction of protein secondary structure from circular dichroism spectra. *Anal. Biochem.* **167**, 76–85. (doi:10.1016/0003-2697(87)90135-7)
 36. Sreerama N, Venyaminov SY, Woody RW. 2000 Estimation of protein secondary structure from circular dichroism spectra: inclusion of denatured proteins with native proteins in the analysis. *Anal. Biochemistry* **287**, 243–251. (doi:10.1006/abio.2000.4879)
 37. Provencher SW, Glockner J. 1981 Estimation of globular protein secondary structure from circular dichroism. *Biochemistry* **20**, 33–37. (doi:10.1021/bi00504a006)
 38. Sreerama N, Woody RW. 2000 Estimation of protein secondary structure from circular dichroism spectra: comparison of CONTIN, SELCON, and CDSSTR methods with an expanded reference set. *Anal. Biochem.* **287**, 252–260. (doi:10.1006/abio.2000.4880)
 39. Lees JG, Miles AJ, Wien F, Wallace BA. 2006 A reference database for circular dichroism spectroscopy covering fold and secondary structure space. *Bioinformatics* **22**, 1955–1962. (doi:10.1093/bioinformatics/btl327)
 40. Holmgren A. 1979 Thioredoxin catalyzes the reduction of insulin disulfides by dithiothreitol and dihydroliipoamide. *J. Biol. Chem.* **254**, 9627–9632.
 41. Ellman GL. 1959 Tissue sulfhydryl groups. *Arch. Biochem. Biophys.* **82**, 70–77. (doi:10.1016/0003-9861(59)90090-6)
 42. Siluvai GS, Mayfield M, Nilges MJ, Debeer George S, Blackburn NJ. 2010 Anatomy of a red copper center: spectroscopic identification and reactivity of the copper centers of *Bacillus subtilis* Sco and its Cys-to-

- Ala variants. *J. Am. Chem. Soc.* **132**, 5215–5226. (doi:10.1021/ja910759v)
43. Cawthorn TR, Poulsen BE, Davidson DE, Andrews D, Hill BC. 2009 Probing the kinetics and thermodynamics of copper(II) binding to *Bacillus subtilis* Sco, a protein involved in the assembly of the Cu(A) center of cytochrome *c* oxidase. *Biochemistry* **48**, 4448–4454. (doi:10.1021/bi802288m)
 44. Calabrese L, Carbonaro M, Musci G. 1988 Chicken ceruloplasmin. Evidence in support of a trinuclear cluster involving type 2 and 3 copper centers. *J. Biol. Chem.* **263**, 6480–6483.
 45. Malone SA, Lewin A, Kilic MA, Svistunenko DA, Cooper CE, Wilson MT, Le Brun NE, Spiro S, Moore GR. 2004 Protein-template-driven formation of polynuclear iron species. *J. Am. Chem. Soc.* **126**, 496–504. (doi:10.1021/ja036483z)
 46. Ludwig P, Layloff T, Adams RN. 1964 Solvent effects on hyperfine coupling constants in electron paramagnetic resonance spectra. *J. Am. Chem. Soc.* **86**, 4568–4573. (doi:10.1021/ja01075a011)
 47. Horng YC, Leary SC, Cobine PA, Young FB, George GN, Shoubridge EA, Winge DR. 2005 Human Sco1 and Sco2 function as copper-binding proteins. *J. Biol. Chem.* **280**, 34 113–34 122. (doi:10.1074/jbc.M506801200)
 48. Lieberman RL, Arciero DM, Hooper AB, Rosenzweig AC. 2001 Crystal structure of a novel red copper protein from *Nitrosomonas europaea*. *Biochemistry* **40**, 5674–5681. (doi:10.1021/bi0102611)
 49. Basumallick L, Sarangi R, DeBeer George S, Elmore B, Hooper AB, Hedman B, Hodgson KO, Solomon EI. 2005 Spectroscopic and density functional studies of the red copper site in nitrosocyanin: role of the protein in determining active site geometric and electronic structure. *J. Am. Chem. Soc.* **127**, 3531–3544. (doi:10.1021/ja044412+)
 50. Siluvai GS, Nakano MM, Mayfield M, Nilges MJ, Blackburn NJ. 2009 H135A controls the redox activity of the Sco copper center. Kinetic and spectroscopic studies of the His135Ala variant of *Bacillus subtilis* Sco. *Biochemistry* **48**, 12 133–12 144. (doi:10.1021/bi901480g)
 51. Robinson NJ, Winge DR. 2010 Copper metallochaperones. *Annu. Rev. Biochem.* **79**, 537–562. (doi:10.1146/annurev-biochem-030409-143539)
 52. Thompson AK, Gray J, Liu A, Hosler JP. 2012 The roles of *Rhodobacter sphaeroides* copper chaperones PCu(A)C and Sco (PrrC) in the assembly of the copper centers of the aa(3)-type and the cbb(3)-type cytochrome *c* oxidases. *Biochim. Biophys. Acta* **1817**, 955–964. (doi:10.1016/j.bbabi.2012.01.003)
 53. Waldron KJ, Firbank SJ, Dainty SJ, Perez-Rama M, Tottley S, Robinson NJ. 2010 Structure and metal loading of a soluble periplasm cuproprotein. *J. Biol. Chem.* **285**, 32 504–32 511. (doi:10.1074/jbc.M110.153080)
 54. Bennett B, Hill BC. 2011 Avoiding premature oxidation during the binding of Cu(II) to a dithiolate site in BsSCO. A rapid freeze-quench EPR study. *FEBS Lett.* **585**, 861–864. (doi:10.1016/j.febslet.2011.02.014)