



Department
for Business
Innovation & Skills

Quarterly Statistical First Release

Publication date:

27th March 2013

Next Updated:

June 2013

Reference: DS/SFR18

Coverage: England

Theme: Children, Education and Skills

For further information contact:

Data Service: Service Desk

servicedesk@thedata-service.org.uk
0870 267 0001

Or view our web site at:

<http://www.thedata-service.org.uk/statistics>

Lead Statistician:

Jessie Evans
Jessie.Evans@bis.gsi.gov.uk
020 7215 1868

Department for Business, Innovation
and Skills,
Level 2,
1 Victoria Street,
London,
SW1H 0ET

© Data Service 2013

Further Education & Skills: Learner Participation, Outcomes and Level of Highest Qualification Held

1. This is a Department for Business, Innovation and Skills (BIS) Statistical First Release (SFR), and updates information published on 31st January 2013. It includes information on adult (19+) government-funded¹ participation, achievement and success rates for Further Education² (excluding schools and Higher Education) and Apprenticeship starts and achievements for all ages (16+) in England, between 2007/08 and 2011/12.
2. This SFR includes final data for the 2011/12 academic year and provisional data for the first six months of the 2012/13 academic year. In the June 2013 SFR provisional data for the first nine months of the 2012/13 academic year will be presented.
3. This SFR shows key statistics on the highest level of qualification held by adults in England from 2006 to 2012, calculated from Labour Force Survey (LFS) data. These include attainment rates for specific priority groups of adult learners in the population that are of key interest within BIS and the Skills Funding Agency. Figures relating to 2012 are provisional and are subject to revisions.
4. This SFR also shows the number of vocational qualifications awarded in the United Kingdom, as collected by the Office of Qualifications and Examinations Regulation (Ofqual) and through the National Vocational Qualifications Database.

¹ Covering the Skills Funding Agency and the Education Funding Agency.

² Further education includes provision delivered in FE organisations, sixth form colleges, independent training organisations, local authorities and other providers. This includes programmes such as Apprenticeships. For more information on the scope of this release, please see paragraphs 58 to 61.

CONTENTS

Statistical Commentary

Summary of Further Education Statistics for England, 2011/12	3
Glossary of Key Terms	4
Adult Learner (19+) Participation and Achievement in Further Education	5
Apprenticeships	7
Workplace Learning	9
Adult (19+) Skills for Life	9
Community Learning	10
Success Rates	10
Headlines for Provisional 2012/13 Data	13
National Statistics	15
Changes Included in this SFR	15
Changes in the Next SFR	15

Supporting Data

Scope	17
Data Sources	18
Issues with Using Provisional Data	18
Issues with Comparing Data Across Academic Years	19
Data Definitions	19
Publication Cycle Across the Year	20
Supplementary Tables	21
Related National Statistics Releases	21
Other Related Statistics	22
Further Education Statistics for Other Countries in the UK	22

Table Guide	23
--------------------	----

Table Footnotes	24
------------------------	----

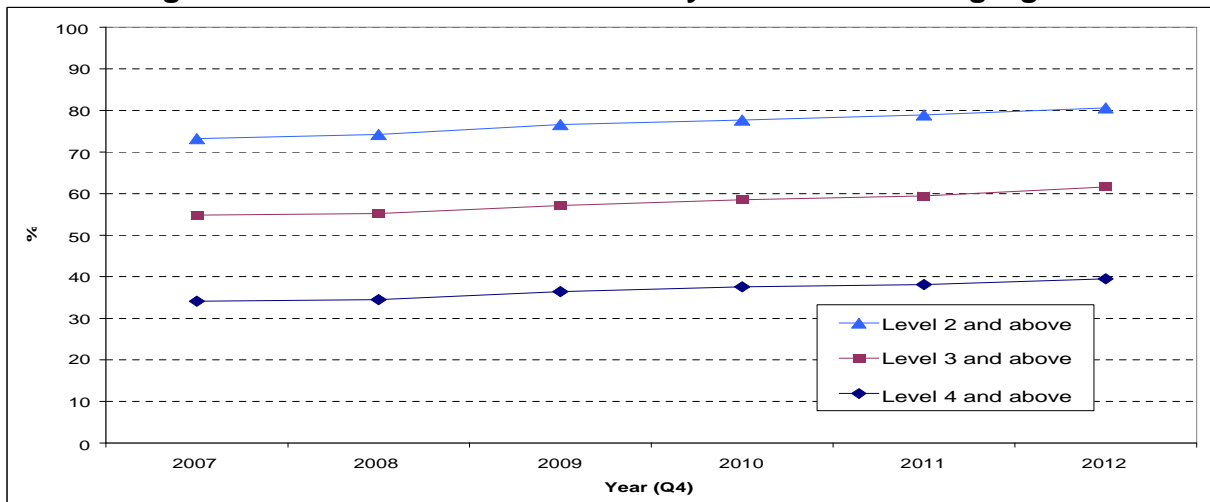
Tables	26
---------------	----

SUMMARY OF FURTHER EDUCATION STATISTICS FOR ENGLAND, 2011/12

Adult Attainment in the Population in 2012

5. The Labour Force Survey is used to measure the level of adult educational attainment in the population. Provisional data for 2012 show that of men aged 19 to 64 and women aged 19 to 59 [Table 8.1]:
- 80.6 per cent were qualified to at least Level 2;
 - 61.6 per cent were qualified to at least Level 3;
 - 39.5 per cent were qualified to Level 4 and above.

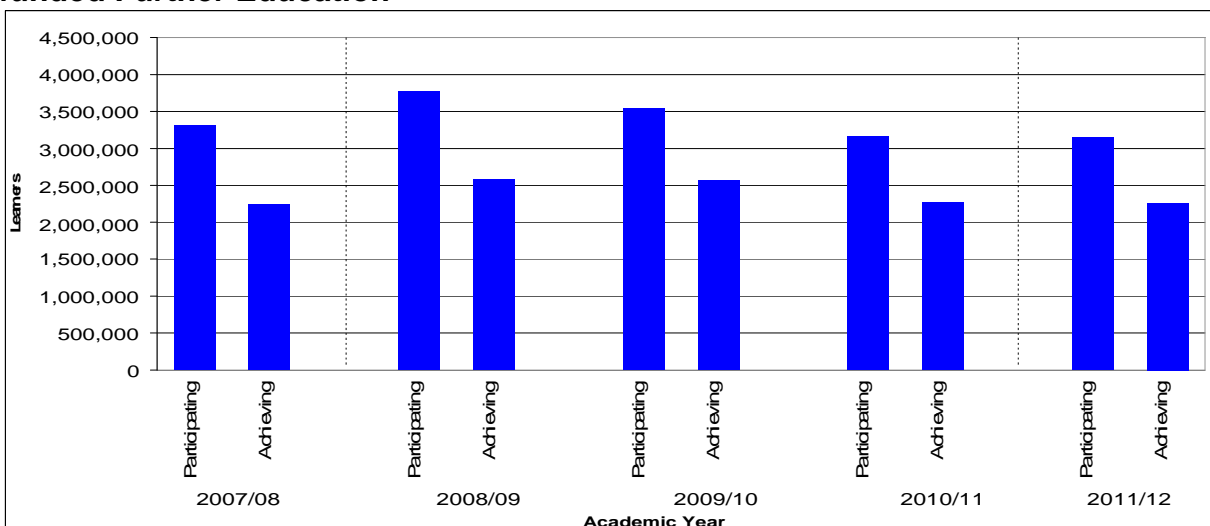
Chart 1: Highest Level of Qualification Held by Adults of Working Age



Adult Learner (19+) Participation and Achievement in Government-funded Further Education

6. The total number of adult learners participating in government-funded further education was 3,149,700 in 2011/12, a similar volume to 2010/11 [Table 1.1].
7. The total number of adult learners achieving a government-funded further education qualification was 2,258,500 in 2011/12, a similar volume to 2010/11 [Table 1.2].

Chart 2: Adult Learner (19+) Participation and Achievement in Government-funded Further Education



GLOSSARY OF KEY TERMS

Further Education and Skills includes learners who are studying on a course at a further education college or training provider, learners who are studying a course within their local community, employees undertaking an Apprenticeship, and employees undertaking other qualifications in the workplace.

Apprenticeships are paid jobs that incorporate on- and off-the-job training leading to nationally recognised qualifications. As an employee, Apprentices earn as they learn and gain practical skills in the workplace. An Apprenticeship framework typically contains the following separately certified elements:

- A knowledge-based element (the theoretical knowledge underpinning a job in a certain occupation and industry, typically certified via a Technical Certificate).
- A competence-based element (the ability to discharge the functions of a certain occupation, typically certified via work-based assessed national vocational qualifications – NVQs).
- Transferable skills (English and maths) – key skills / functional skills.
- A module on employment rights and responsibilities.

See <http://www.apprenticeships.org.uk/> for further information on Apprenticeships.

Apprenticeship Grant for Employers (AGE 16 to 24) scheme provides Apprenticeship grants to employers with up to 1,000 employees recruiting 16 to 24 year olds with a value of £1,500, to encourage employers to take on new Apprentices. Eligible employers are those who have never employed an Apprentice before or who have not employed one in the last 12 months. Subject to budget availability and the employer's commitment to support the Apprentice to the end of their programme, up to ten grants can be made to any one employer. AGE 16 to 24 was originally made available from 1 February 2012 until March 2013, but has since been extended for a further year. For further information see: <http://www.apprenticeships.org.uk/Partners/Policy/AGE-1624.aspx>.

On the **Access to Apprenticeships pathway**, participants use the elements of an Apprenticeship framework to brush up skills and workplace experience, with the aim of securing a paid Apprenticeship with an employer as quickly as possible, up to a maximum of six months. Participants are not categorised or counted as an 'apprentice' until they become employed. This pathway was announced in May 2011. See <http://www.apprenticeships.org.uk/Partners/Policy/AccessToApprenticeships.aspx> for further information on Access to Apprenticeships

Education and Training (previously Learner Responsive and University for Industry) covers further education learning delivered mainly in a classroom, workshop, or through distance or e-learning. For further information on Education and Training, please see:

<http://www.thedataservice.org.uk/datadictionary/businessdefinitions/Learner+Responsive.htm>

Workplace Learning covers a broad range of training including basic skills, Level 2, Level 3 and higher-level skills. This training is mainly delivered through the workplace (but excludes Apprenticeships). Between 2005/06 and 2007/08 this included the Train to Gain programme and Standalone NVQs. Between 2008/09 and 2010/11 this included the Train to Gain programme, Employability Skills Pilot and other programmes such as Programmes for the Unemployed. From 2011/12 this includes all training mainly delivered through the workplace (excluding Apprenticeships).

Skills for Life qualifications are designed to give people the reading, writing, maths and communication skills they need in everyday life, to operate effectively in work and to help them succeed on other training courses. For further information on Skills for Life, please see:

<http://skillsfundingagency.bis.gov.uk/providers/programmes/Basic+Skills/>

Community Learning funds a wide range of informal courses, ranging from personal development through to older people's learning, IT courses, employability skills, family learning and activities to promote civic engagement and community development. Courses may be offered by local authorities, colleges, and voluntary and community groups, and include activity specifically targeted at deprived areas and disadvantaged groups. More information on Community Learning and the different programmes can be found at: <http://skillsfundingagency.bis.gov.uk/providers/programmes/asl/>

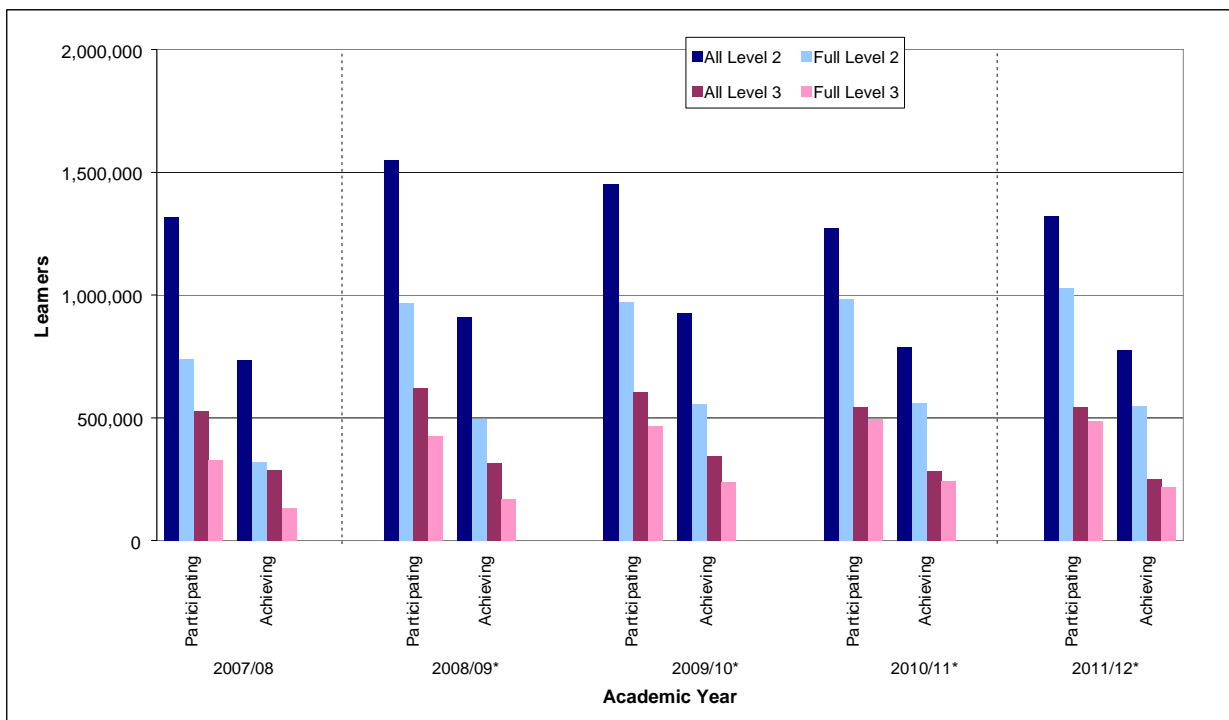
Full Level 2 is equivalent to an NVQ at Level 2, or 5 GCSEs. The widths of all of a learner's Level 2 aims are summed to establish whether a learner is taking a full Level 2 programme. **Full Level 3** is equivalent to an NVQ at Level 3, or 2 A-Levels. The widths of all a learner's Level 3 aims are summed to establish whether a learner is taking a full Level 3 programme.

Academic year runs from 1st August to 31st July (except for Ofqual figures in Table 10 which run from 1st October to 30th September).

ADULT LEARNER (19+) PARTICIPATION AND ACHIEVEMENT IN FURTHER EDUCATION

8. This section reports on 2011/12 adult learner participation and achievement in further education. 2011/12 is the latest academic year for which we have final, full-year data which we can use to accurately report learner participation and achievement. Provisional data for the first six months of the 2012/13 academic year (August 2012 to January 2013) are presented separately, starting from page 13 of this release.
9. Some 3,149,700 adult learners participated in some form of government-funded further education in the 2011/12 academic year [Table 1.1]. This was a similar volume compared to 2010/11. Some 2,258,500 adult learners achieved a government-funded further education qualification in the 2011/12 academic year [Table 1.2]. This was a similar volume compared to 2010/11. These include adult learners across all of the learning routes outlined in the Glossary on Page 4 of this release.
10. Chart 3 shows the number of adult learners participating in and achieving a Level 2 (equivalent to GCSE level) or Level 3 (equivalent to A-Level) qualification in government-funded further education between the 2007/08 and 2011/12 academic years. Chart 3 shows that the number of adult learners participating in Level 2 courses gradually decreased between 2008/09 and 2010/11 and then increased between 2010/11 and 2011/12. Those participating in full Level 2 increased in every year shown. Achievements in Level 2 courses gradually increased between 2007/08 and 2009/10 and then declined over the following two years.

Chart 3: Adult (19+) Learner Participation and Achievement in Government-funded Further Education by Level



*Note: Learner Numbers for 2008/09 and 2011/12 onwards are not directly comparable with earlier years. See paragraph 70 onwards for more information.

11. Of all adult learners in 2011/12:

- 1,320,000 participated on a Level 2 course, an increase of 3.7 per cent compared to 2010/11. Of these, 1,028,100 were studying a full Level 2 qualification, an increase of 4.6 per cent [Table 1.1];
- 542,600 participated on a Level 3 course, a similar volume compared to 2010/11. Of these, 486,800 were studying a full Level 3 qualification, a decrease of 1.5 per cent [Table 1.1].

12. Of all adult achievements in 2011/12:

- 775,200 achieved a Level 2 qualification, a decrease of 1.7 per cent compared to 2010/11. Of these, 546,600 achieved a full Level 2 qualification, a decrease of 2.7 per cent [Table 1.2];
- 249,000 achieved a Level 3 qualification, a decrease of 11.9 per cent compared to 2010/11. Of these, 216,200 achieved a full Level 3 qualification, a decrease of 10.9 per cent [Table 1.1].

13. Of the 3,149,700 adult learners participating in further education in 2011/12:

- 56.4 per cent were female, 43.6 per cent were male [Table 2];
- 11.8 per cent declared a learning difficulty and/or disability [Table 2];
- 19.6 per cent were from a Black or Minority Ethnic background (including Mixed, Asian, Black and Other Ethnic Group learners) [Table 2];
- 211,700 benefited from support for the unemployed (those nearest the workforce) [Table 1];

14. In 2011/12 there were 90,100 offenders aged 18 or over in the prison system participating in learning, an increase of 1.4 per cent on 2010/11. 71,900 achieved a learning outcome, an increase of 2.3 per cent. [Table 1]. These offenders were funded via the Offenders' Learning and Skills Service (OLASS) budget.

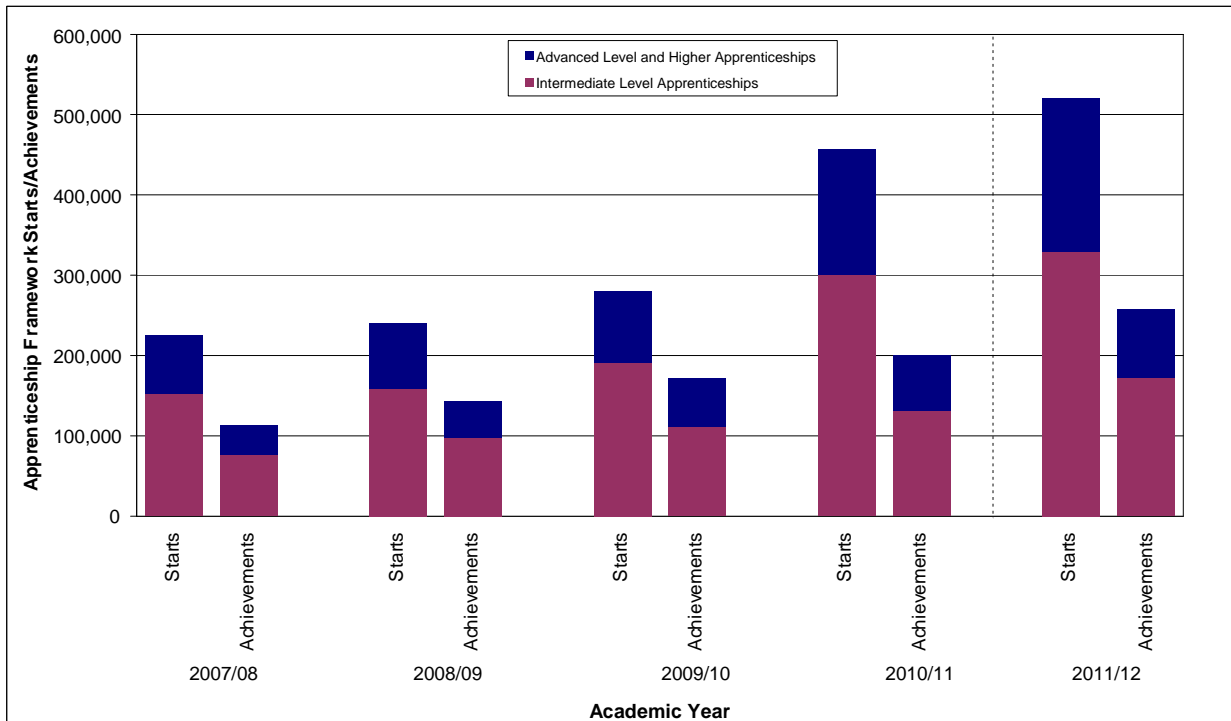
Apprenticeships

15. The total volume of Apprenticeship starts in 2011/12 was 520,600 [Table 4.1]. This was an increase of 13.9 per cent compared to 2010/11. Of these there were:

- 329,000 Intermediate Level Apprenticeship starts, a 9.3 per cent increase on 2010/11;
- 187,900 Advanced Level Apprenticeship starts, a 22.1 per cent increase on 2010/11;
- 3,700 Higher Apprenticeship starts, a 67.6 per cent increase on 2010/11.

16. Chart 4 shows there was a steady increase in Apprenticeship starts between 2007/08 and 2009/10, followed by a large increase between 2009/10 and 2010/11 and a smaller increase between 2010/11 and 2011/12. Apprenticeship framework achievements have increased steadily since 2007/08, for all levels.

Chart 4: Apprenticeship Starts and Framework Achievements by Level



***Note: Starts for 2011/12 onwards are not directly comparable with earlier years. See paragraph 72 onwards for more information.**

17. The length of an Apprenticeship is typically more than a year and an Apprenticeship framework achievement is recorded against the year it was achieved, not the year it was started. Because of this, the number of achievements is below the number of starts in Chart 4, as a large volume of learners that have started an Apprenticeship have not yet completed it.

18. Some 806,500 learners participated on an Apprenticeship in the 2011/12 academic year. This was an increase of 21.1 per cent compared to 2010/11.

Under 19

19. In 2011/12 there were 129,900 Apprenticeship starts by those aged under 19 [Table 4.1]. This was a decrease of 1.4 per cent compared to 2010/11. Of these there were:

- 95,400 Intermediate Level Apprenticeship starts, a 2.0 per cent decrease on 2010/11;
- 34,100 Advanced Level Apprenticeship starts, a similar volume compared to 2010/11.
- 300 Higher Apprenticeship starts, up from 200 in 2010/11.

20. In 2011/12 there were 77,900 Apprenticeship framework achievements by those aged under 19 [Table 4.2]. This was a decrease of 6.5 per cent compared to 2010/11. Of these there were:

- 56,500 Intermediate Level Apprenticeship framework achievements, a 4.7 per cent decrease on 2010/11;
- 21,300 Advanced Level Apprenticeship framework achievements, an 11.0 per cent decrease on 2010/11.
- 100 Higher Apprenticeship framework achievements, the same volume as 2010/11.

19 and Over

21. In 2011/12 there were 390,700 Apprenticeship starts by those aged 19 and over. [Table 4.1]. This was an increase of 20.0 per cent compared to 2010/11. Of these there were:

- 233,600 Intermediate Level Apprenticeship starts, a 14.6 per cent increase on 2010/11;
- 153,700 Advanced Level Apprenticeship starts, a 28.5 per cent increase on 2010/11;
- 3,400 Higher Apprenticeship starts, a 66.0 per cent increase on 2010/11.
- 161,400 Apprenticeships starts by 19–24 year olds, a 12.5 per cent increase on 2010/11;
- 229,300 Apprenticeship starts by those aged 25 and over, a 25.9 per cent increase on 2010/11.

22. In 2011/12 there were 180,500 Apprenticeship framework achievements by those aged 19 and over [Table 4.2]. This was an increase of 54.3 per cent compared to 2010/11. Of these there were:

- 115,900 Intermediate Level Apprenticeship framework achievements, a 60.1 per cent increase on 2010/11;
- 63,400 Advanced Level Apprenticeship framework achievements, a 45.3 per cent increase on 2010/11.
- 1,200 Higher Apprenticeship framework achievements, a 26.5 per cent increase on 2010/11;
- 85,600 Apprenticeship framework achievements by 19–24 year olds, a 11.2 per cent increase on 2010/11;
- 94,900 Apprenticeship framework achievements by those aged 25 and over, more than double the volume compared to 2010/11.

23. In 2011/12, 7,200 Apprenticeships started through the Access to Apprenticeship pathway, of which 2,800 converted to paid employment to complete their Apprenticeship in the usual way [Table 14.2].

Workplace Learning

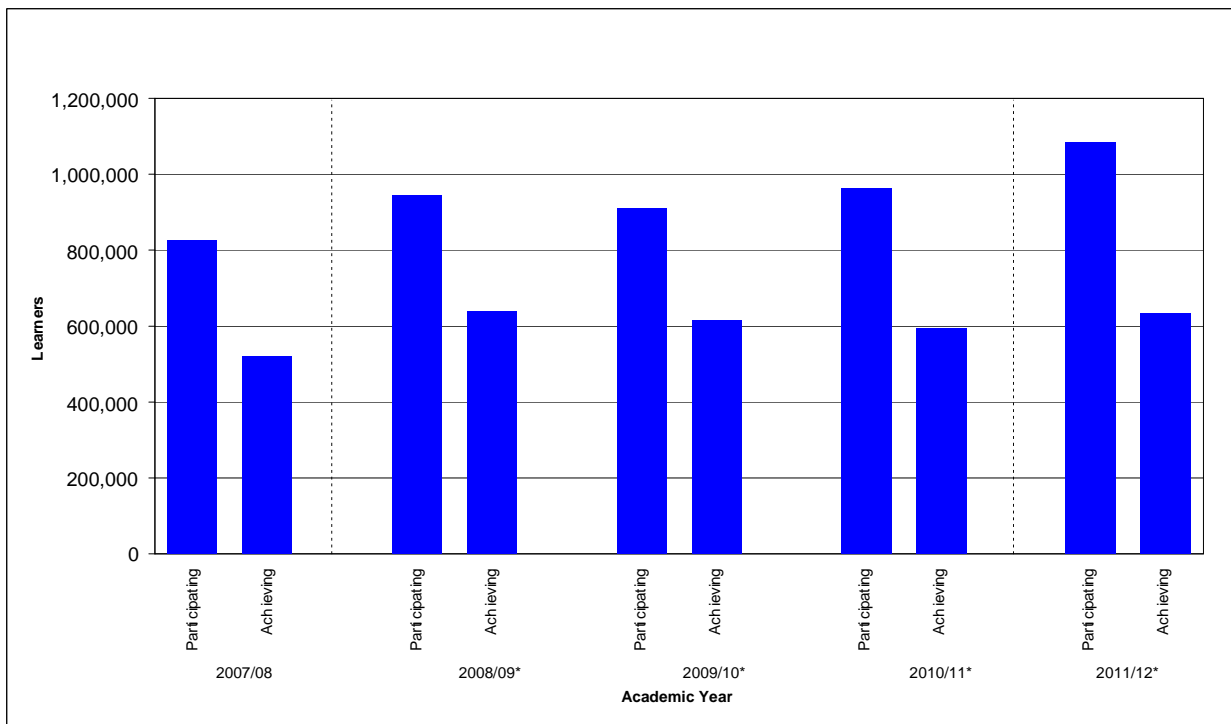
24. In 2011/12 there were 331,600 Workplace Learning starts [Table 5.1]. Just over three quarters of Workplace Learning starts in 2011/12 were at Level 2.

25. In 2011/12, learners achieved 290,100 Workplace Learning qualifications [Table 5.2]. Nearly three quarters of Workplace Learning achievements in 2011/12 were at Level 2.

Adult (19+) Skills for Life

26. Chart 5 shows that adult learner participation on Skills for Life courses has fluctuated between 2007/08 and 2009/10, but since 2009/10 participation figures have risen.

Chart 5: Adult Learner (19+) Participation and Achievement on Skills for Life Courses



***Note: Learner Numbers for 2008/09 and 2011/12 onwards are not directly comparable with earlier years. See paragraph 70 onwards for more information.**

27. In 2011/12, 1,083,000 adult learners participated on a Skills for Life course [Table 3]. This was an increase of 12.6 per cent compared to 2010/11. Of these:

- 782,500 participated on an English course, a 22.5 per cent increase on 2010/11;
- 772,500 participated on a maths course, a 22.5 per cent increase on 2010/11;
- 139,400 participated on an English for Speakers of Other Languages (ESOL) course, a 14.8 per cent decrease compared to 2010/11.

Note that some learners undertake more than one type of Skills for Life qualification within an academic year, and hence the sum of English, maths and ESOL participation is greater than the total number of learners participating.

28. In 2011/12, 633,000 adult learners achieved a Skills for Life qualification [Table 3]. This was an increase of 6.3 per cent compared to 2010/11. Of these:
- 387,400 achieved an English qualification, a 17.5 per cent increase on 2010/11;
 - 386,400 achieved a maths qualification, a 19.1 per cent increase on 2010/11;
 - 110,000 achieved an ESOL qualification, a 10 per cent decrease compared to 2010/11.

Note that some learners achieve more than one type of Skills for Life qualification within an academic year, and hence the sum of English, maths and ESOL achievements is greater than the total number of learners achieving.

Community Learning

29. In 2011/12, 683,300 learners participated on a Community Learning course [Table 6]. This was a decrease of 2.3 per cent compared to 2010/11. Of these:
- 518,600 took a Personal and Community Development Learning course, a 2.9 per cent decrease compared to 2010/11;
 - 55,700 took a Neighbourhood Learning in Deprived Communities course, a 19.8 per cent increase on 2010/11;
 - 58,700 took a Family English, Maths and Language course, a 10.4 per cent decrease compared to 2010/11;
 - 72,800 took a Wider Family Learning course, a 3.4 per cent decrease compared to 2010/11

Note that these figures include learners participating on more than one type of Community Learning course.

30. In 2011/12, 594,500 learners achieved on a Community Learning course [Table 6]. This was a decrease of 2.3 per cent compared to 2010/11. Of these:
- 445,400 achieved a Personal and Community Development Learning course, a 2.9 per cent decrease compared to 2010/11;
 - 50,100 achieved a Neighbourhood Learning in Deprived Communities course, a 21.4 per cent increase on 2010/11;
 - 50,900 achieved a Family English, Maths and Language course, a 10.8 per cent decrease compared to 2010/11;
 - 67,500 achieved a Wider Family Learning course, a 3.8 per cent decrease compared to 2010/11

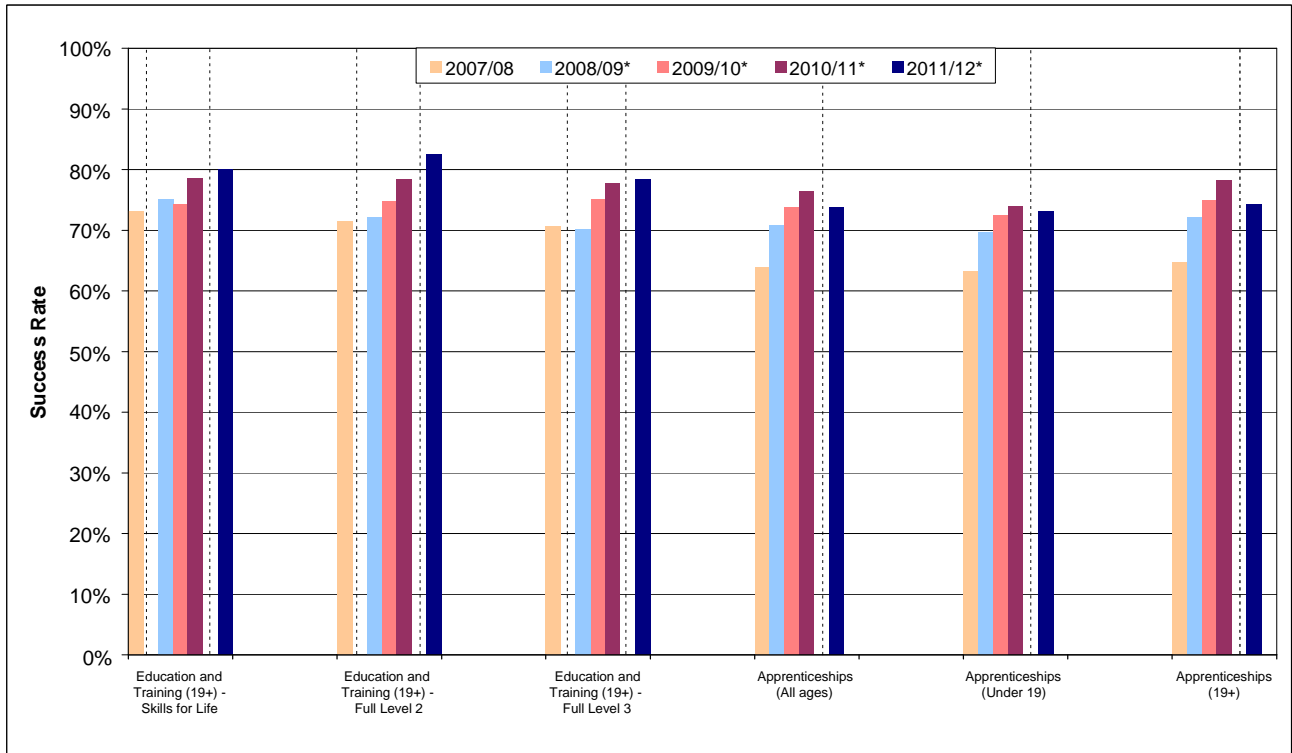
Note that these figures include learners participating on more than one type of Community Learning course.

Success Rates

31. Success rates are calculated for individual qualifications. They show how many learners that started a qualification went on to successfully complete it. Success rates are typically calculated at a qualification level, but can be aggregated across different types of course, or for particular colleges or providers. Education and Training, Apprenticeship and Workplace Learning success rates are calculated on a slightly different basis. For more information please see: http://www.thedataservice.org.uk/Statistics/success_rates/

32. Chart 6 shows that adult (19+) Education and Training success rates have risen steadily between 2009/10 and 2011/12 across all qualification levels. Success rates for Apprenticeships rose dramatically between 2007/08 and 2010/11, but decreased between 2010/11 and 2011/12 by 2.6 percentage points to 73.8 per cent. In 2011/12 the success rate for Workplace Learning³ was 90.6 per cent.

Chart 6: Success Rates



***Note: Success Rates for 2008/09 and 2011/12 onwards are not directly comparable with earlier years. See paragraph 70 onwards for more information.**

33. In 2011/12, adult (19+) Education and Training success rates [Table 7.1] were:

- 83.9 per cent for all Education and Training, an increase of 2.5 percentage points compared to 2010/11;
- 80.1 per cent for Skills for Life qualifications, an increase of 1.5 percentage points compared to 2010/11;
- 82.7 per cent for Level 2 qualifications, an increase of 2.5 percentage points compared to 2010/11 (82.6 per cent for full Level 2, an increase of 4.1 percentage points);
- 79.4 per cent for Level 3 qualifications, a slight increase of 0.6 percentage points compared to 2010/11 (78.4 per cent for full Level 3, a slight increase of 0.7 percentage points).

34. In 2011/12, Apprenticeship success rates [Table 7.2] were:

- 73.8 per cent for all Apprenticeships, a decrease of 2.6 percentage points compared to 2010/11;
- 72.6 per cent for Intermediate Level Apprenticeships, a decrease of 2.7 percentage points compared to 2010/11;

³ The training provided under Workplace Learning has changed over the years. Therefore this is the first year that Workplace Learning success rates have been produced.

- 76.5 per cent for Advanced Level Apprenticeships, a decrease of 2.1 percentage points compared to 2010/11;
- 72.6 per cent for Higher Apprenticeships, a decrease of 12.0 percentage points compared 2010/11;
- 74.2 per cent for Apprenticeships by those aged 19 and over, a decrease of 4.0 percentage points compared to 2010/11;
- 73.1 per cent for Apprenticeships by those aged under 19, a slight decrease of 0.9 percentage points compared to 2010/11.

HEADLINES FOR PROVISIONAL 2012/13 DATA

35. Data for 2012/13 provide an early view of performance for the first six months of the academic year (August 2012 to January 2013). Data are provisional because providers may not have reported all their information relating to this period. It is not possible to determine how incomplete the information behind the provisional data is, so the data cannot be directly compared against provisional or final data from earlier academic years. Comparisons can only be made once final returns for the academic year are made by providers (as published in January 2014).

Adult Learner (19+) Participation

36. Provisional data show that in the first six months of the 2012/13 academic year (August 2012 to January 2013) there were 2,131,300 learners aged 19 and over participating in government-funded further education [Table 11]. Of these:

- 748,200 participated on a Skills for Life course;
- 831,800 participated on a Level 2 course, of which 670,600 were on a full Level 2 course;
- 460,200 participated on a Level 3 course, of which 391,700 were on a full Level 3 course.

- 248,600 benefited from support for the unemployed (those nearest the workforce).

37. Provisional data for the first six months of the 2012/13 academic year (August 2012 to January 2013) show there were 38,300 offenders aged 18 or over in the prison system participating in learning [Table 11]. These offenders were funded via the Offenders' Learning and Skills Service (OLASS) budget.

Adult (19+) Skills for Life

38. Provisional data show that 748,200 learners aged 19 and over participated on a Skills for Life course in the first six months of the 2012/13 academic year (August 2012 to January 2013) [Table 12]. Of these:

- 542,000 participated on an English course;
- 535,700 participated on a maths course;
- 103,600 participated on an English for Speakers of Other Languages (ESOL) course.

Apprenticeships

39. Provisional data show that there were 245,000 Apprenticeship starts in the first six months of the 2012/13 academic year (August 2012 to January 2013) [Table 13.1]. Of these there were:

- 146,800 Intermediate Level Apprenticeship starts;
- 95,200 Advanced Level Apprenticeship starts; and
- 3,000 Higher Apprenticeship starts.

- 69,600 Apprenticeship starts by those aged under 19;

- 82,100 Apprenticeship starts by 19–24 year olds; and
- 93,300 Apprenticeship starts by those aged 25 and over.

40. Provisional data show that 660,100 learners participated on an Apprenticeship in the first six months of the 2012/13 academic year (August 2012 to January 2013).

41. Provisional data show that there were 100,300 Apprenticeship framework achievements in the first six months of the 2012/13 academic year (August 2012 to January 2013) [Table 13.2]. Of these there were:

- 63,600 Intermediate Level Apprenticeship framework achievements;
 - 36,000 Advanced Level Apprenticeship framework achievements; and
 - 700 Higher Apprenticeship framework achievements.
-
- 25,100 Apprenticeship framework achievements by those aged under 19;
 - 33,100 Apprenticeship framework achievements by 19–24 year olds;
 - 42,100 Apprenticeship framework achievements by those aged 25 and over.

42. Provisional data show that between February 2012 and January 2013, there were 20,800 Apprenticeship starts for which a payment was made through the Apprenticeship Grant for Employers (AGE 16 to 24) scheme. A further 4,300 were in the pipeline (started but not yet paid) [Table 14.1].

43. Provisional data show that in the first six months of the 2012/13 academic year (August 2012 to January 2013), 3,200 Apprenticeships started through the Access to Apprenticeship pathway, of which 500 converted to paid employment to complete their Apprenticeship in the usual way [Table 14.2].

Workplace Learning

44. Provisional data show that there were 56,600 Workplace Learning starts in the first six months of the 2012/13 academic year (August 2012 to January 2013) [Table 15.1].

45. Provisional data show that there were 77,900 Workplace Learning achievements in the first six months of the 2012/13 academic year (August 2012 to January 2013) [Table 15.2].

Community Learning

46. Provisional data show that 363,200 learners participated on a Community Learning course in the first six months of the 2012/13 academic year (August 2012 to January 2013) [Table 16]. Of these:

- 297,700 took a Personal and Community Development Learning course;
- 17,400 took a Neighbourhood Learning in Deprived Communities course;
- 22,700 took a Family English, Maths and Language course;
- 31,900 took a Wider Family Learning course.

NATIONAL STATISTICS

47. The United Kingdom Statistics Authority has designated these statistics as National Statistics, in accordance with the Statistics and Registration Service Act 2007 and signifying compliance with the Code of Practice for Official Statistics.
48. Designation can be broadly interpreted to mean that the statistics:
- meet identified user needs;
 - are well explained and readily accessible;
 - are produced according to sound methods; and
 - are managed impartially and objectively in the public interest.
49. Once statistics have been designated as National Statistics it is a statutory requirement that the Code of Practice shall continue to be observed. More information regarding compliance with the Code of Practice is available on our website:
<http://www.thedataservice.org.uk/statistics/statisticalfirstrelease/compliance/>

CHANGES INCLUDED IN THIS SFR

50. In the 2011/12 academic year a Single Individualised Learner Record (ILR) data collection system was introduced. This replaced the multiple separate data collections from previous years and led to small technical changes in the way learners from more than one funding stream are counted. Therefore figures for 2011/12 onwards are not directly comparable to earlier years. A paper is available on our website to explain the Single ILR and the small effects it has on the SFR at: http://www.thedataservice.org.uk/NR/ronlyres/C05DCDD5-67EE-4AD0-88B9-BEBC8F7F3300/0/SILR_Effects_SFR_Learners_June12.pdf. Further information on the Single ILR is available on the Information Authority's website at: <http://www.theia.org.uk/ilr/singleilr/>
51. An error was found in the provisional 2011/12 figures published in the January, March, June and October 2012 SFRs. Some total FE & Skills and Skills for Life learners were included incorrectly (approximately 1-2 per cent). The error has been corrected and these learners have been removed in the 2011/12 final figures published in this SFR. Therefore previous provisional 2011/12 data should not be used for comparisons.
52. An error was found in the provisional Quarter 1 2012/13 Workplace Learning figures published in the January 2013 SFR. Some starts (approximately 15,000) and achievements (approximately 600) were included in Workplace Learning incorrectly. The error was corrected and these have been removed. A revision was published on the 18th March 2013.
53. Following this release, supplementary tables showing in-year participation figures by mode of provision will be published for the first time at the end of April.

CHANGES IN THE NEXT SFR

54. The June 2013 SFR will include provisional data for the first nine months of the 2012/13 academic year.

55. Ofqual Vocational Qualification data shown in Table 10 of this release, and accompanying supplementary tables, will be updated on the 6th June 2013 as part of a formal cascade of this release. These tables will be updated to include data for the second quarter of 2012/13 (January 2013 to March 2013) which will allow Ofqual to update their detailed bulletins that include these data.
56. The Apprenticeship Grant for Employers (AGE 16 to 24) started in February 2012. Figures for this grant are shown in Table 14.1 of this release. This is a new project, therefore early data can be misleading. In the public interest we will publish, at the end of May, early provisional figures up to the end of April 2013. The figures will be updated in the June SFR.
57. Changes to the next release will be pre-announced on the Data Service website at least a month prior to coming into effect, at:
http://www.thedataservice.org.uk/statistics/statisticalfirstrelease/sfr_next/

SUPPORTING DATA

Scope

58. Should we need to make an unplanned revision to the statistics contained in this release, we will follow the procedures outlined in the Revisions Policy for this Statistical First Release. This includes action to understand the impact that any revisions will have, as well as ensuring that they are clearly communicated to the reader. The Revisions Policy can be found at:
<http://www.thedataservice.org.uk/statistics/statisticalfirstrelease/compliance/>
59. Information from the different further education learning options have been drawn together to give a coherent and comprehensive picture of the participation and achievement of young people and adults. These options include:
- Further education organisations
 - Sixth form colleges
 - Local Authorities
 - Independent training organisations.
60. These organisations deliver a wide variety of government programmes, including:
- Education and Training
 - Apprenticeships
 - Workplace Learning
 - Community Learning.
61. This SFR covers adults (19+) and does not contain information regarding:
- **Delivery in School Sixth Forms**, including maintained, independent and academy schools. We are hoping to include this in future, once more work has been done to reconcile the different data sources. Provisional figures taken from the Department for Education (DfE) [Participation in Education, Training and Employment by 16–18 Year Olds in England](#). Statistical Release show there were 521,900 students studying in School Sixth Forms in 2011, based on a snapshot of January 2012 school census data.
 - **Higher Education in Higher Education Institutions**. The publication referenced in paragraph 86 shows that the total number of HE enrolments at English Higher Education Institutions stood at 2,496,645 in 2011/12.
 - **Privately-funded training at FE organisations and independent training organisations**. There is no single coherent source that provides a measure of privately-funded training. BIS will investigate whether it is possible to develop a measure to support this as part of our wider Dissemination Plan. More detail on the Dissemination Plan can be found at:
http://www.thedataservice.org.uk/statistics/dissemination_plan/. There are no sources currently available that fully capture privately-funded academic activity, particularly for older learners. However, in Table 10 of this release we do show the total number of Vocational Qualifications awarded in the UK. This includes both public and privately-funded qualifications and gives some sense of scale of total vocationally-related activity in the sector.

Data Sources

62. The data used to produce this SFR are Individualised Learner Record (ILR) collections that are returned to the Data Service by further education colleges and providers. The Data Service and *the information authority* introduced a Single ILR collection (SILR) in 2011/12 to replace the multiple ILR collection types that were collected in previous years. There are no longer separate collections for different funding streams and providers return all of their learners in a single file. The following ILR collections have been used to populate this release:

Year	Data Source
2011/12	ALL SILR R15 – final
	Apprenticeships & Workplace Learning Employer Outcomes Pilot R15 - final
2012/13	ALL SILR R06
	Apprenticeships & Workplace Learning Employer Outcomes Pilot R06

63. For 2012/13, R06 is used to provide provisional data on learning in all further education and skills providers for the period 1st August 2012 to 31st January 2013.

64. The data sources for earlier years, including 2011/12, are final collections and include information on provision for the full academic year. More information on these data sources is available in a definitions document, which can be found at: http://www.thedataservice.org.uk/statistics/statisticalfirstrelease/sfr_current/.

65. The Labour Force Survey is the other data source used for the SFR (Tables 8 and 9). The latest LFS data used in this release relate to Quarter 4 (October – December) 2012.

Issues with Using Provisional Data

66. It is important to provide the earliest picture of further education performance once it becomes available so that users may assess the impact of government-funded provision and hold the system to account. However, provisional data are taken from an operational information system which is designed to support the funding of providers and there are some important limitations users should take into consideration.

67. In-year information is subject to data lag, which is when a provider submits information after the period it related to. This information is subsequently attributed to the correct time period. Data remain provisional until final returns for the academic year are made by providers, after the end of the academic year. Final data are published in the following January. The size of revision to individual estimates that arise from data lag can vary greatly. They tend to be around 2 to 3 per cent but have been as much as 15 per cent. Revisions are typically upward though it should be noted that on occasions small downward revisions are possible.

68. Data lag from one year to the next is not predictable, as provider behaviour changes over time and there is no source of information that would enable us to provide a robust estimate of completeness of data that have been returned. Provisional data cannot, therefore, be compared with provisional or final data from earlier academic

years. We generally recommend using the final data for the last complete academic year.

69. We carry out a quality assessment of the volume of providers that have made their returns. If we consider estimates to be particularly weak, due to data lag or any other factor, we may defer publication of those estimates. In recent years we have encouraged more timely reporting of data ahead of the final return. This is set out in our quality statement, which can be found at:

<http://www.thedataservice.org.uk/statistics/statisticalfirstrelease/compliance/>.

Issues with Comparing Data Across Academic Years

70. In January 2007, BIS consulted on a new funding approach for learners. This included three new demand led funding (DLF) models and a new funding formula, all of which were introduced in the 2008/09 academic year. To support this, it was necessary to bring in some technical changes from 2008/09 on how and where some activities are counted.

71. Overall the new funding methodology had a small impact of just over 1 per cent on total learner participation, and minimal effect on overall achievements. However, individual series (excluding Apprenticeship starts and achievements) were more significantly affected, and should not be compared with those in earlier years. The level of provision at which a learner was studying was unaffected. More information on these changes can be found at:

<http://www.thedataservice.org.uk/NR/rdonlyres/5DC702AA-5117-40E1-A15E-01F95F2AF32B/0/TheeffectsofDemandLedFundingonthecountof2008v2.doc>

72. In the 2011/12 academic year a Single Individualised Learner Record (ILR) data collection system was introduced. This replaced the multiple separate data collections from previous years and led to small technical changes in the way learners from more than one funding stream are counted.

73. Overall the new collection system led to a removal of duplicate learners and a reduction in total learner participation of approximately 2 per cent. A paper is available on our website to explain the Single ILR and the small effects it has on the SFR at: http://www.thedataservice.org.uk/NR/rdonlyres/C05DCDD5-67EE-4AD0-88B9-BEBC8F7F3300/0/SILR_Effects_SFR_Learners_June12.pdf. Further information on the Single ILR is available on the Information Authority's website at: <http://www.theia.org.uk/ilr/singleilr/>

Data Definitions

74. High-level definitions of some of the key terms used in this release can be found in the Glossary on page 4. A more detailed definitions document to accompany this release is available on the Data Service website at:

http://www.thedataservice.org.uk/statistics/statisticalfirstrelease/sfr_current/

75. The 'Level of Highest Qualification Held by Adults' statistics are produced using data on the highest qualification held by individuals from the Labour Force Survey in each year. The LFS is conducted by the Office for National Statistics and the estimates provided are the best measure of attainment within the population at Quarter 4 (October – December) each calendar year. Further details of how this information is used to calculate the estimates can be found at:

<http://www.thedataservice.org.uk/statistics/statisticalfirstrelease/methodology/>

Publication Cycle Across the Year

76. Further information on future editions of the SFR can be found on the Data Service statistics website at:

http://www.thedataservice.org.uk/statistics/statisticalfirstrelease/sfr_next/

77. Table A below shows provisional and final data included for each quarterly release.

Table A: Publication Cycle

Release	Data Included
March 2013	- Provisional Apprenticeship, Workplace Learning and overall FE and Skills participation data for the first six months of 2012/13
	- Provisional Apprenticeship and Workplace Learning achievement data for the first six months of 2012/13
	- Final data for 2011 and provisional data for 2012 on the level of highest qualification held for adults in the population
June 2013	- Provisional Apprenticeship, Workplace Learning and overall FE and Skills participation data for the first nine months of 2012/13
	- Provisional Apprenticeship and Workplace Learning achievement data for the first nine months of 2012/13
October 2013	- Provisional Apprenticeship, Workplace Learning and overall FE and Skills participation data for the full 2012/13 academic year
	- Provisional Apprenticeship and Workplace Learning achievement data for the full 2012/13 academic year
January 2014	- Final participation and achievement data for the full 2012/13 academic year for Further Education and Skills
	- Education and Training; Apprenticeship; and Workplace Learning success rates for 2012/13
	- Provisional Apprenticeship, Workplace Learning and overall FE and Skills participation data for the first three months of 2013/14
	- Provisional Apprenticeship and Workplace Learning achievement data for the first three months of 2013/14

78. The Statistical First Release is an evolving product and we welcome feedback. If you have comments or feedback on the SFR, these can be sent to: servicedesk@thedataservice.org.uk, or alternatively, you can call 0870 267 0001.

79. If you have a statistical question around the content or presentation of National Statistics in the release, please contact Jessie Evans at: jessie.evans@bis.gsi.gov.uk

80. If you would like to sign up for Web alerts, so that you are automatically sent an alert when new information is put on the website, please subscribe at: http://www.thedataservice.org.uk/News/ds_alerts/

Supplementary Tables

81. A full list of supplementary tables relating to this SFR can be found on the Data Service website at: http://www.thedataservice.org.uk/Statistics/fe_data_library/. These tables include breakdowns by age, gender, ethnicity, learners with learning difficulties and/or disabilities, region, local authority, parliamentary constituency, sector subject area and funding stream. For more information on exactly what data will be released, and on which date, please see the supplementary tables list on the website.
82. Local Authority Reports are published on the Data Service website. Local Authorities are shown based on the postcodes of delivery locations and also on the home postcodes of learners. The reports cover 2008/09 to 2010/11: enrolments, starts and achievements by sector; enrolments and achievements by provider; and participation by provider by funding stream, learning and learner characteristics. The reports can be found at: http://www.thedataservice.org.uk/Statistics/fe_data_library/further_education_skills/local_authority_tables/

Related National Statistics Releases

83. There are a number of other National Statistics publications available that can be used to provide contextual information to this SFR. Some of those most relevant to this release are discussed below.
84. [*Participation in Education, Training and Employment by 16-18 Year Olds in England*](#) published on 28th June 2012 by the Department for Education. This release was revised on 21st February 2013 to take account of the 2011 Census ONS population estimates. This shows that the proportion of 16–18 year olds in education and training was 83.1 per cent at end 2011 – the highest rate ever recorded and an increase of 0.8 percentage points from 82.3 per cent at end 2010. More recent quarterly data published in the NEET Quarterly Brief on 28th February 2013 showed that participation at ages 16-18 had remained broadly static since the start of the 2011/12 academic year.
85. [*Level 2 and 3 Attainment by Young People in England Measured Using Matched Administrative Data: Attainment by Age 19 in 2011*](#) published on 19th April 2012 by the Department for Education. This shows that in 2011, 83.8 per cent of people aged 19 were qualified to at least Level 2, and 56.7 per cent were qualified to Level 3. These were increases of 2.3 percentage points and 2.5 percentage points respectively, since 2011.
86. [*Higher Education Student Enrolments and Qualifications Obtained at Higher Education Institutions in the United Kingdom for the Academic Year*](#) published on 10th January 2013 by the Higher Education Statistics Agency. This release shows that the total number of HE enrolments at UK Higher Education Institutions stood at 2,496,645 in 2011/12, showing no percentage difference from 2010/11. In terms of qualifications, in 2011/12 there were 390,985 first degree graduates compared to 369,010 in 2010/11, an increase of 6 per cent.
87. [*Education and Training Statistics for the United Kingdom*](#) published on 7th November 2012 by the Department for Education. This release provides statistics relating to education and training in the UK and includes chapters relating to post-compulsory

education & training and qualifications. Information includes participation of learners in further education by country of study, participation in job-related training and the highest level of qualification held by adults in the population (UK).

Other Related Statistics

88. In January 2012 the Government launched FE Choices. The prime purpose of FE Choices is to provide clear, comparable information to learners and employers so they can make informed choices about post-16 education and training. FE Choices enables users to search and compare provider ratings for four performance indicators: Success Rates; Learner Destinations (including Employment Rate and Learning Rate); Learner Satisfaction; and Employer Satisfaction. These indicators are published on the FE Choices website at:

<http://fechoices.skillsfundingagency.bis.gov.uk/>. Results at National level, by type of provider and by individual provider for each performance indicator can be found at: http://www.thedataservice.org.uk/statistics/statistics_fechoices/

Further Education Statistics for Other Countries in the UK

89. The focus of this SFR is on government-funded further education provision in England. Similar information is available for other countries in the UK, and provides useful contextual background to these statistics.

90. Statistics on Further Education and Work-based learning in **Wales** can be found at: <http://wales.gov.uk/topics/statistics/?lang=en>

91. Statistics on Professional and Technical Enrolments in the **Northern Ireland** Further Education Sector for 2011/12 can be found at:

<http://www.delni.gov.uk/index/statsandresearch/further-education-stats/further-education-enrolments-2/prof-and-tech-enrolments-in-ni-fe-sector-2011-12.htm>

92. Statistics on learners in further education in **Scotland** can be found at:

http://www.sfc.ac.uk/web/FILES/ReportsandPublications/Facts_and_Figures_2012.pdf. Additionally, user-defined tables on further education learners and courses can be produced at: <https://stats.sfc.ac.uk/infact/>

TABLE GUIDE

93. This section provides a brief summary of what is included in each table of this release. Tables 1 to 7 focus on the 2011/12 academic year; Tables 11 to 16 show provisional data for the first six months of 2012/13 academic year (August 2012 – January 2013).

- **Table 1** shows participation and achievement in further education and skills by level for adults (19+).
- **Table 2** shows a demographic breakdown of participation in further education and skills for adults (19+).
- **Table 3** shows Skills for Life participation and achievement for adults (19+).
- **Table 4** shows Apprenticeship starts and achievements by age and level.
- **Table 5** shows Workplace Learning starts and achievements by level.
- **Table 6** shows Community Learning participation and achievements by provision type.
- **Table 7** shows success rates for Education and Training (19+), Workplace Learning and Apprenticeships.
- **Tables 8 and 9** show level of attainment in the population (working age and economically active respectively) from the Labour Force Survey.
- **Table 10** shows a quarterly time series of information on Vocational Qualifications awarded.
- **Tables 11 to 16** repeat earlier tables; showing provisional in-year participation for the first six months of the 2012/13 academic year (August 2012 to January 2013).

Supplementary Tables

94. A full list of supplementary tables relating to this SFR can be found on the Data Service website at: http://www.thedataservice.org.uk/Statistics/fe_data_library/. These tables include breakdowns by age, gender, ethnicity, learners with learning difficulties and/or disabilities, region, Local Authority, parliamentary constituency, sector subject area and funding stream.

Table Footnotes

General Footnotes Relevant to All Tables

- 1) Volumes are rounded to the nearest 100; percentages are calculated on pre-rounded data.
- 2) '-' Indicates a base value of less than 50; '**' indicates a percentage of less than 0.5%.
- 3) These tables (except 8-10) include learners that were funded by the Learning and Skills Council or Young People's Learning Agency and/or are now funded by the Skills Funding Agency or Education Funding Agency.
- 4) For definitions of variables used in the tables please see the data dictionary:
<http://www.thedataservice.org.uk/datadictionary/>
- 5) Except for Tables 4, 5, 13 and 14 (see footnote 19), age is reported as at 31 August of the academic year for all provision.
- 6) In tables reporting full-year numbers, except for Tables 4 and 5 (see footnotes 20 and 29), full-year numbers are a count of the number of learners that participated/achieved at least one aim at any point during the year. Learners undertaking/achieving more than one aim will appear only once in the 'total learners' category for each data collection. All learners undertaking/achieving a full Level 2 or full Level 3 qualification will also appear in the Level 2 or Level 3 category, respectively.
- 7) The data source for all tables is the Individualised Learner Record, except where stated.
- 8) Further breakdowns of the data are available at the Data Service website:
http://www.thedataservice.org.uk/Statistics/fe_data_library/

Tables 1, 7.1 and 11 – Adult (19+) FE and Skills

- 9) Education and Training success rates are calculated as the number of learning aims achieved divided by the number of learning aims expected to complete, excluding any learners who transferred on to another learning aim within the same institution.
- 10) Table 1.2 reports on the actual number of achievements within the academic year without reference to those that were expected to complete. Tables 7.1 report on success rates which are based on the reported achievement of individual aims that were expected to complete in the academic year.
- 11) FE and Skills participation figures for 2012/13 are available in Table 11.
- 12) Tables that show provisional estimates for 2012/13 are not directly comparable with figures for previous years.

Table 2 – FE and Skills Demographics

- 13) Learners undertaking courses at more than one level will be counted once for each applicable level, but once only in the Total. Learners studying a Level 2 Skills for Life qualification will be counted in both the Level 2 and Skills for Life categories, but only once in the Total.
- 14) Age, gender, learners with learning difficulties and/or disabilities and ethnicity is based upon self-declaration by the learner.

Tables 4, 7.2, 13 and 14 – Apprenticeships

- 15) Apprenticeship success rates are based on the number of learners who meet all of the requirements of their Apprenticeship framework, divided by the number of learners who have left training or successfully completed their training in the academic year.
- 16) Table 7.2 reports on success rates which are based on the reported achievement of individual aims that were expected to complete in the academic year.
- 17) Apprenticeship success rates are not affected by demand led funding.
- 18) Unlike learner figures in earlier tables, figures for 2008/09 onwards are comparable with earlier years as demand led funding rules are not applied to starts and achievements.
- 19) Age is calculated based on age at start of the programme rather than based on 31 August.
- 20) In Table 4.1 full-year numbers are a count of the number of starts at any point during the year. Learners starting more than one Apprenticeship will appear more than once.
- 21) In Table 4.2 full-year numbers are a count of the number of framework achievements at any point during the year. Learners achieving more than one framework will appear more than once.
- 22) Programme-Led Apprenticeships recorded in ILR returns are included in the above figures.
- 23) In order to be counted as a successful achievement, all elements of the framework must have been achieved.
- 24) Quarter 1 is 1 August to 31 October; Quarter 2 is 1 November to 31 January; Quarter 3 is 1 February to 30 April; Quarter 4 is 1 May to 31 July.

Tables 5, 7.3 and 15 – Workplace Learning

- 25) Workplace Learning success rates are based on the number of aims achieved, divided by the number of aims completed in the academic year.

26) 2011/12 is the first year that Workplace Learning success rates are available. This is due to a change in the programmes included in Workplace Learning. Between 2007/08 and 2010/11 this included the Train to Gain programme. In 2011/12 this included all training mainly delivered through the workplace (excluding Apprenticeships). Therefore previous years are not comparable. For more information see:

http://www.thedataservice.org.uk/Statistics/success_rates/success_rates_2011-12.

27) Table 7.3 reports on success rates which are based on the reported achievement of individual aims that were expected to complete in the academic year.

28) This covers a broad range of training – including basic skills, Level 2, Level 3 and higher-level skills such as Leadership and Management. This training is mainly delivered through the workplace (but excludes Apprenticeships). In 2007/08 this included the Train to Gain programme and Standalone NVQs. Between 2008/09 and 2010/11 this included the Train to Gain programme, Employability Skills Pilot and other programmes such as Programmes for the Unemployed. From 2011/12 this includes all training mainly delivered through the workplace (excluding Apprenticeships). Figures for 2008/09 and 2009/10 are not comparable with earlier years as in 2008/09 and 2009/10 NVQs delivered in the workplace changed from being funded by FE to be funded by Train to Gain. There were 181,000 starts and 132,000 achievements in NVQs delivered in the workplace in 2007/08 (Source - FE 2007/08 F05 Final).

29) In Tables 5.1 and 16.1 full-year numbers are a count of the number of starts at any point during the year. Learners starting more than one course will appear more than once.

30) In Tables 5.2 and 16.2 full-year numbers are a count of the number of achievements at any point during the year. Learners achieving more than one course will appear more than once.

31) Quarter 1 is 1 August to 31 October; Quarter 2 is 1 November to 31 January; Quarter 3 is 1 February to 30 April; Quarter 4 is 1 May to 31 July.

Tables 6 and 16 – Community Learning

32) Total Learners includes learners participating in Community Learning (previously Adult Safeguarded Learning) provision in the Community Learning and FE funding streams for 2007/08. For 2008/09 to 2010/11, only Community Learning provision recorded in the Community Learning collection is included in totals except for 2009/10 where Community Learning provision recorded in the Education and Training collection for five Specially Designated Colleges is also included. No Formal First Step learners are included.

33) There are a number of learners with Community Learning aims that are recorded in the Education and Training funding stream and are not included in the figures in Table 6. In 2008/09 there were 7,900 participating and 6,400 achieving learners; in 2009/10 there were 7,700 participating and 6,300 achieving learners; and in 2010/11 there were 8,300 participating and 6,900 achieving learners. The only Community Learning provision included for Table 6 for 2008/09 and 2010/11 is recorded in the Community Learning funding stream. Community Learning from 2011/12 is recorded in the Single ILR collection only.

Table 10 – Vocational Qualifications

34) This table covers all levels of vocational qualifications reported through Ofqual. Data are supplied by awarding organisations.

35) Academic year is October to September. For example, the 2005/06 academic year is 1 October 2005 to 30 September 2006.

36) Key Skills data was not collected prior to October 2009.

37) 'Other Vocational Qualifications' include Basic Skills, Entry Level, English for Speakers Other Languages, Functional Skills, Free-Standing Mathematics Qualification, Key Skills, National Qualifications Framework and Other General types.

Table 1.1: Adult (19+) FE and Skills Participation by Level (2007/08 to 2011/12) – Learner Volumes

		Funded Learners							
		2007/08	2008/09	2009/10	2010/11	2011/12			
		Full Year	Full Year	Full Year	% change 08/09 to 09/10	Full Year	% change 09/10 to 10/11	Full Year	% change 10/11 to 11/12
Level		Full Year	Full Year	Full Year	Full Year	Full Year	Full Year	Full Year	Full Year
Total Learners		3,304,400	3,771,200	3,540,500	-6.1%	3,163,200	-10.7%	3,149,700	*
Participation	of which...								
	Below Level 2 (excluding Skills for Life)	532,500	496,800	435,300	-12.4%	370,900	-14.8%	574,700	54.9%
	Skills for Life	824,800	945,100	909,100	-3.8%	961,800	5.8%	1,083,000	12.6%
	Full Level 2	740,000	968,600	971,000	*	982,600	1.2%	1,028,100	4.6%
	Full Level 3	328,100	423,900	469,100	10.6%	494,000	5.3%	486,800	-1.5%
	Level 2	1,319,400	1,549,000	1,451,200	-6.3%	1,273,300	-12.3%	1,320,000	3.7%
	Level 3	528,200	619,700	604,800	-2.4%	542,900	-10.2%	542,600	*
	Level 4+	53,200	58,200	49,500	-14.9%	36,600	-26.0%	39,200	7.1%
	No Level Assigned	803,600	910,500	951,100	4.5%	888,300	-6.6%	798,900	-10.1%

Table 1.2: Adult (19+) FE and Skills Achievement by Level (2007/08 to 2011/12) – Learner Volumes

		Funded Learners							
		2007/08	2008/09	2009/10	2010/11	2011/12			
		Full Year	Full Year	Full Year	% change 08/09 to 09/10	Full Year	% change 09/10 to 10/11	Full Year	% change 10/11 to 11/12
Level		Full Year	Full Year	Full Year	Full Year	Full Year	Full Year	Full Year	Full Year
Total Learners		2,243,600	2,584,000	2,567,700	-0.6%	2,265,100	-11.8%	2,258,500	*
Achievement	of which...								
	Below Level 2 (excluding Skills for Life)	406,500	367,000	336,800	-8.2%	298,500	-11.4%	472,300	58.2%
	Skills for Life	520,700	639,100	614,600	-3.8%	595,600	-3.1%	633,000	6.3%
	Full Level 2	320,300	493,900	556,000	12.6%	561,800	1.0%	546,600	-2.7%
	Full Level 3	134,400	170,200	237,800	39.7%	242,700	2.1%	216,200	-10.9%
	Level 2	734,700	910,800	926,000	1.7%	788,900	-14.8%	775,200	-1.7%
	Level 3	285,600	317,000	344,400	8.7%	282,600	-17.9%	249,000	-11.9%
	Level 4+	25,800	27,600	26,900	-2.3%	20,400	-24.4%	21,500	5.7%
	No Level Assigned	682,800	756,400	814,600	7.7%	764,100	-6.2%	685,900	-10.2%

Notes

1) These tables include Apprenticeships, Workplace Learning, Community Learning and Education and Training provision taken at General Further Education Colleges (including Tertiary), Sixth Form Colleges, Special Colleges (Agricultural and Horticultural Colleges and Art and Design Colleges), Specialist Colleges and External Institutions.

2) Figures for 2008/09 onwards are not directly comparable to earlier years as the introduction of demand led funding has changed how data is collected and how funded learners are defined from 2008/09 onwards. Apprenticeship success rates are not affected by demand led funding. More information on demand led funding is available at:

<http://www.thedataservice.org.uk/datadictionary/businessdefinitions/Demand+Led+Funding.htm>

3) Figures for 2011/12 onwards are not directly comparable to earlier years as a Single Individualised Learner Record (ILR) data collection system has been introduced. Small technical changes have been made in the way learners from more than one provision type are counted, leading to a removal of duplicate learners and a reduction in overall learner numbers of approximately 2 per cent. More information on the Single ILR is available at:

http://www.thedataservice.org.uk/NR/rdonlyres/C05DCDD5-67EE-4AD0-88B9-BEBC8F7F3300/0/SILR_Effects_SFR_Learners_June12.pdf

4) Data for earlier years are available in the Further Education and Skills Supplementary Tables:

http://www.thedataservice.org.uk/Statistics/fe_data_library/further_education_skills/

5) Please see the general footnotes and the FE and Skills footnotes sections for further information on these tables.

6) In 2011/12 there were 90,100 offenders aged 18 or over in the prison system participating in learning, 71,900 achieved a learning outcome. These offenders were funded via the Offenders' Learning and Skills Service (OLASS) budget. Those aged 19 and over are included in Tables 1.1 and 1.2.

7) 219,400 learners benefited from support for the unemployed (those nearest the workforce), of which 211,700 were aged 19+. These are defined as those learners reporting that they were in receipt of Employment and Support Allowance - Work Related Activity Group (ESA WRAG) or Jobseeker's Allowance (JSA).

Table 2: Adult (19+) Demographic Summary of FE and Skills Participation (2011/12) – Learner Volumes

	Funded Learners											
	All FE and Skills Participation							...of which Apprenticeships				
	Below Level 2 (excluding SfL)	Skills For Life (SfL)	Level 2	Level 3	Level 4+	Total FE and Skills	%	Intermediate Level Apprenticeship	Advanced Level Apprenticeship	Higher Apprenticeship	Total Apprenticeships	%
Total Learners	574,700	1,083,000	1,320,000	542,600	39,200	3,149,700	100.0%	362,100	263,700	5,200	616,900	100.0%
Age												
19-24	152,300	318,300	373,400	218,300	8,100	754,600	24.0%	159,100	118,900	2,900	272,100	44.1%
25-49	319,300	648,700	759,400	276,200	25,400	1,763,400	56.0%	166,800	127,500	2,100	291,500	47.3%
50+	102,700	115,500	187,100	48,100	5,700	624,100	19.8%	36,200	17,300	200	53,200	8.6%
Unknown	400	600	200	-	-	7,500	*	-	-	-	-	-
Gender												
Female	260,500	633,300	650,100	327,200	24,300	1,776,900	56.4%	190,600	152,800	3,200	338,500	54.9%
Male	314,200	449,800	669,900	215,500	14,900	1,372,800	43.6%	171,500	110,800	2,000	278,400	45.1%
Learners with Learning Difficulties and/or Disabilities												
Learning Difficulty/Disability	113,500	128,000	116,400	47,400	2,700	370,700	11.8%	27,200	17,700	200	44,300	7.2%
No Learning Difficulty/Disability	431,900	920,200	1,164,200	483,600	35,200	2,631,200	83.5%	328,000	242,100	5,000	562,100	91.1%
Not Known	29,200	34,800	39,400	11,600	1,300	147,800	4.7%	6,800	3,900	100	10,600	1.7%
Ethnicity												
Asian/ Asian British	53,300	118,000	102,900	29,400	2,100	267,900	8.5%	16,400	9,100	200	25,300	4.1%
Black/ African/ Caribbean/ Black British	55,100	93,400	89,100	32,600	1,800	215,100	6.8%	13,000	8,800	100	21,600	3.5%
Mixed/ Multiple Ethnic Group	17,100	26,700	28,800	11,500	700	68,400	2.2%	6,200	4,000	100	10,000	1.6%
White	422,100	793,900	1,058,800	456,700	33,700	2,466,000	78.3%	320,300	237,500	4,800	549,500	89.1%
Other Ethnic Group	12,500	34,000	20,900	6,200	400	66,000	2.1%	3,000	1,800	-	4,800	0.8%
Not Known/Not Provided	14,600	17,000	19,500	6,300	500	66,300	2.1%	3,200	2,500	-	5,600	0.9%

Notes

1) These tables include Apprenticeships, Workplace Learning, Community Learning and Education and Training provision taken at General Further Education Colleges (including Tertiary), Sixth Form Colleges, Special Colleges (Agricultural and Horticultural Colleges and Art and Design College Specialist Colleges and External Institutions.

2) Please see the general footnotes and the FE and Skills Demographics footnotes sections for further information on these tables.

Table 3: Adult (19+) FE and Skills – Skills for Life Participation and Achievement by Level (2007/08 to 2011/12)

Measure	Level	2007/08	2008/09	2009/10		2010/11		2011/12	
		Full Year	Full Year	Full Year	% change 08/09 to 09/10	Full Year	% change 09/10 to 10/11	Full Year	% change 10/11 to 11/12
Participation	Total Learners	824,800	945,100	909,100	-3.8%	961,800	5.8%	1,083,000	12.6%
	of which English	485,400	579,500	555,700	-4.1%	639,000	15.0%	782,500	22.5%
	of which entry level	132,000	136,700	112,400	-17.8%	103,800	-7.7%	107,600	3.6%
	of which level 1	204,400	248,700	226,700	-8.9%	285,900	26.1%	379,500	32.7%
	of which level 2	197,100	245,600	252,100	2.7%	286,800	13.8%	335,400	16.9%
	of which maths	395,600	517,100	525,000	1.5%	630,500	20.1%	772,500	22.5%
	of which entry level	82,600	108,700	101,400	-6.7%	98,500	-2.9%	102,400	3.9%
	of which level 1	185,200	241,800	236,800	-2.1%	314,800	32.9%	396,500	26.0%
	of which level 2	171,600	218,600	228,800	4.6%	265,700	16.2%	323,400	21.7%
	of which ESOL (English for Speakers of Other Languages)	193,300	188,700	178,600	-5.4%	163,600	-8.4%	139,400	-14.8%
	of which entry level	164,600	161,000	150,100	-6.8%	135,500	-9.7%	118,000	-12.9%
	of which level 1	24,400	24,100	24,100	*	24,200	*	19,000	-21.4%
	of which level 2	9,400	9,300	9,700	3.5%	9,600	-0.6%	7,100	-26.1%
Achievement	Total Learners	520,700	639,100	614,600	-3.8%	595,600	-3.1%	633,000	6.3%
	of which English	275,000	340,300	336,400	-1.1%	329,700	-2.0%	387,400	17.5%
	of which entry level	92,800	91,800	79,200	-13.7%	74,400	-6.1%	79,700	7.2%
	of which level 1	106,900	144,000	130,200	-9.6%	134,100	3.1%	175,600	30.9%
	of which level 2	97,800	129,000	144,700	12.2%	139,900	-3.3%	152,800	9.2%
	of which maths	208,900	293,000	311,100	6.2%	324,300	4.2%	386,400	19.1%
	of which entry level	53,500	68,300	68,400	*	70,900	3.7%	79,700	12.4%
	of which level 1	94,400	138,900	138,400	*	151,300	9.4%	191,600	26.6%
	of which level 2	82,300	111,400	126,200	13.2%	128,500	1.8%	142,400	10.8%
	of which ESOL (English for Speakers of Other Languages)	138,600	135,800	128,200	-5.6%	122,100	-4.7%	110,000	-10.0%
	of which entry level	119,500	116,700	108,100	-7.4%	101,700	-5.9%	93,700	-7.9%
	of which level 1	15,700	15,600	15,900	1.6%	16,400	3.6%	13,200	-20.0%
	of which level 2	6,200	6,100	6,600	8.0%	6,500	-1.7%	5,200	-19.7%

Notes

1) Figures between 2007/08 and 2010/11 were revised in June 2012. This was due to a methodological change in how learners are counted for English, maths and ESOL courses to remove duplicate learners. Total learner figures are not affected. More information is available at:

http://www.thedataservice.org.uk/NR/rdonlyres/907339C7-439B-43D8-9831-C957BD130A83/0/SFL_Revision_June12.pdf

2) Figures for 2008/09 onwards are not directly comparable to earlier years as the introduction of demand led funding has changed how data is collected and how funded learners are defined from 2008/09 onwards. More information on demand led funding is available at:

<http://www.thedataservice.org.uk/datadictionary/businessdefinitions/Demand+Led+Funding.htm>

3) Figures for 2011/12 onwards are not directly comparable to earlier years as a Single Individualised Learner Record (ILR) data collection system has been introduced. Small technical changes have been made in the way learners from more than one provision type are counted, leading to a removal of duplicate learners and a reduction in overall learner numbers of approximately 2 per cent. More information on the Single ILR is available at:

http://www.thedataservice.org.uk/NR/rdonlyres/C05DCDD5-67EE-4AD0-88B9-BEBC8F7F3300/0/SILR_Effects_SFR_Learners_June12.pdf

4) Data for earlier years are available in the Skills for Life Supplementary Tables:

http://www.thedataservice.org.uk/Statistics/fe_data_library/skills_for_life/

5) Please see the general footnotes section for further information on this table.

Table 4.1: All Age Apprenticeship Programme Starts by Level and Age (2007/08 to 2011/12)

	Age	2007/08 Full Year	2008/09 Full Year	2009/10 Full Year	2010/11 Full Year	2011/12 Full Year	2010/11				2011/12			
							Quarter 1	Quarter 2	Quarter 3	Quarter 4	Quarter 1	Quarter 2	Quarter 3	Quarter 4
Intermediate Level Apprenticeship	Under 19	82,000	74,200	89,400	97,300	95,400	38,100	18,300	18,900	22,000	40,600	19,400	17,600	17,800
	19-24	55,200	52,600	72,800	90,400	101,700	21,000	20,000	23,300	26,100	29,200	21,900	25,300	25,300
	25+	14,600	31,700	28,400	113,400	131,900	16,400	26,800	31,700	38,400	34,700	30,100	32,200	34,900
	Total	151,800	158,500	190,500	301,100	329,000	75,500	65,200	73,900	86,500	104,500	71,300	75,200	78,000
	of which 19+	69,800	84,300	101,100	203,800	233,600	37,400	46,800	55,000	64,500	63,900	51,900	57,500	60,200
Advanced Level Apprenticeship	Under 19	25,500	25,100	27,200	34,200	34,100	17,100	4,700	6,400	6,000	18,100	5,400	4,500	6,100
	19-24	34,800	32,000	39,800	51,600	58,000	16,000	10,100	12,400	13,300	18,400	12,200	12,900	14,600
	25+	12,600	24,200	20,600	68,000	95,700	10,800	13,300	20,200	23,700	21,700	21,200	23,400	29,400
	Total	72,900	81,300	87,700	153,900	187,900	43,800	28,100	39,000	42,900	58,200	38,900	40,800	50,100
	of which 19+	47,400	56,100	60,400	119,700	153,700	26,800	23,400	32,600	36,900	40,100	33,400	36,300	44,000
Higher Apprenticeship	Under 19	-	-	100	200	300	100	-	-	-	100	-	100	100
	19-24	-	100	1,200	1,300	1,700	700	200	200	200	800	200	400	300
	25+	-	-	100	700	1,700	400	100	100	100	500	300	400	500
	Total	100	200	1,500	2,200	3,700	1,200	300	300	400	1,400	600	900	800
	of which 19+	-	100	1,400	2,000	3,400	1,100	300	300	300	1,300	600	800	800
All Apprenticeships	Under 19	107,600	99,400	116,800	131,700	129,900	55,200	23,100	25,400	28,000	58,900	24,900	22,200	24,000
	19-24	90,100	84,700	113,800	143,400	161,400	37,700	30,300	35,900	39,600	48,300	34,300	38,600	40,200
	25+	27,200	55,900	49,100	182,100	229,300	27,600	40,200	52,000	62,200	56,900	51,600	56,000	64,800
	Total	224,800	239,900	279,700	457,200	520,600	120,600	93,600	113,300	129,800	164,100	110,700	116,800	128,900
	of which 19+	117,200	140,600	162,900	325,500	390,700	65,300	70,500	87,900	101,800	105,200	85,900	94,600	104,900

Table 4.2: All Age Apprenticeship Framework Achievements by Level and Age (2007/08 to 2011/12)

	Age	2007/08 Full Year	2008/09 Full Year	2009/10 Full Year	2010/11 Full Year	2011/12 Full Year	2010/11				2011/12			
							Quarter 1	Quarter 2	Quarter 3	Quarter 4	Quarter 1	Quarter 2	Quarter 3	Quarter 4
Intermediate Level Apprenticeship	Under 19	47,100	50,200	52,900	59,400	56,500	13,700	11,000	13,000	21,700	13,700	11,800	11,800	19,300
	19-24	28,400	35,500	38,600	48,400	54,100	10,700	10,800	11,400	15,500	12,400	11,700	13,000	17,000
	25+	900	12,500	20,300	23,900	61,800	4,600	4,500	5,600	9,200	10,500	12,500	16,900	21,900
	Total	76,300	98,100	111,900	131,700	172,400	29,000	26,300	30,000	46,400	36,600	36,000	41,700	58,200
	of which 19+	29,300	48,000	59,000	72,400	115,900	15,300	15,300	17,000	24,800	22,900	24,200	29,900	38,900
Advanced Level Apprenticeship	Under 19	16,200	17,500	20,100	23,900	21,300	5,100	3,600	5,800	9,400	5,500	3,700	3,800	8,300
	19-24	19,700	22,400	25,400	27,700	30,600	6,500	5,300	6,100	9,900	7,200	6,300	6,700	10,300
	25+	300	5,400	13,900	15,900	32,800	3,300	2,900	3,900	5,900	5,400	6,500	8,400	12,500
	Total	36,200	45,200	59,400	67,500	84,700	14,900	11,800	15,700	25,100	18,100	16,600	18,900	31,100
	of which 19+	20,000	27,700	39,300	43,600	63,400	9,800	8,200	9,900	15,700	12,700	12,900	15,100	22,800
Higher Apprenticeship	Under 19	-	-	-	100	100	-	-	-	-	-	-	-	-
	19-24	-	-	100	800	800	300	100	200	300	300	100	100	200
	25+	-	-	-	100	300	-	-	-	-	100	100	-	100
	Total	-	-	200	1,000	1,200	400	100	200	300	500	200	200	400
	of which 19+	-	-	200	900	1,200	400	100	200	300	400	200	200	400
All Apprenticeships	Under 19	63,300	67,700	73,100	83,300	77,900	18,800	14,600	18,800	31,100	19,200	15,500	15,600	27,600
	19-24	48,100	57,800	64,200	77,000	85,600	17,500	16,100	17,600	25,700	20,000	18,200	19,900	27,600
	25+	1,200	17,900	34,300	39,900	94,900	7,900	7,400	9,500	15,100	16,000	19,100	25,300	34,500
	Total	112,600	143,400	171,500	200,300	258,400	44,300	38,100	46,000	71,900	55,200	52,700	60,800	89,700
	of which 19+	49,300	75,700	98,400	116,900	180,500	25,400	23,600	27,100	40,800	36,000	37,200	45,200	62,100

Notes

1) Figures for 2011/12 onwards are not directly comparable to earlier years as a Single Individualised Learner Record (ILR) data collection system has been introduced. Small technical changes have been made in the way learners from more than one provision type are counted, leading to a removal of duplicate learners and a reduction in overall learner numbers of approximately 2 per cent. More information on the Single ILR is available at:

http://www.thedataservice.org.uk/NR/rdonlyres/C05DCDD5-67EE-4AD0-88B9-BEBC8F7F3300/0/SILR_Effects_SFR_Learners_June12.pdf

2) Data for earlier years are available in the Apprenticeship Supplementary Tables:

http://www.thedataservice.org.uk/Statistics/fe_data_library/Apprenticeships/

3) Please see the general footnotes and the Apprenticeships footnotes section for all information on these tables.

Table 5.1: Workplace Learning Starts by Level (2007/08 to 2011/12)

Level		2007/08	2008/09	2009/10	2010/11	2011/12	2010/11				2011/12			
		Full Year	Full Year	Full Year	Full Year	Full Year	Quarter 1	Quarter 2	Quarter 3	Quarter 4	Quarter 1	Quarter 2	Quarter 3	Quarter 4
Total Starts		347,300	906,100	774,500	599,300	331,600	179,800	172,500	143,300	103,700	59,500	66,400	88,200	117,600
of which...														
	Below Level 2	28,700	155,300	147,100	114,300	43,200	37,700	37,700	21,900	17,000	7,900	9,300	11,800	14,200
	Level 2	274,300	579,900	430,500	331,900	252,200	89,600	88,400	85,500	68,400	44,700	49,900	67,500	90,200
	Level 3	43,100	135,800	100,200	81,800	34,200	26,300	21,100	17,300	17,100	6,700	6,900	8,500	12,200
	Level 4+	1,100	11,900	4,300	3,000	2,000	900	800	700	300	200	300	500	1,000
	No Level Assigned	-	23,200	92,400	68,300	-	25,200	24,500	18,000	300	-	-	-	-
	Below Level 2 (excluding Skills for Life)	-	22,100	27,900	11,200	4,200	4,900	3,900	1,700	700	600	900	1,300	1,500
	Skills for Life	39,200	191,700	127,000	108,300	62,200	34,900	36,300	20,800	16,300	11,900	13,900	16,600	19,800
	Full Level 2	263,900	520,100	415,100	315,400	226,300	83,700	82,200	81,800	67,600	39,900	44,200	60,900	81,300
	Full Level 3	43,100	136,100	98,200	80,600	31,700	25,800	20,700	17,000	16,900	6,600	6,700	7,900	10,600

Table 5.2: Workplace Learning Achievements by Level (2007/08 to 2011/12)

Level		2007/08	2008/09	2009/10	2010/11	2011/12	2010/11				2011/12			
		Full Year	Full Year	Full Year	Full Year	Full Year	Quarter 1	Quarter 2	Quarter 3	Quarter 4	Quarter 1	Quarter 2	Quarter 3	Quarter 4
Total Achievements		187,500	583,700	676,000	584,900	290,100	144,600	142,500	155,300	142,400	62,900	64,500	68,300	94,500
of which...														
	Below Level 2	14,200	88,700	105,900	95,100	34,900	22,200	26,300	28,400	18,200	4,900	6,900	9,300	13,800
	Level 2	158,200	399,300	389,700	332,500	212,100	80,000	76,500	79,600	96,400	46,800	47,400	49,700	68,100
	Level 3	14,200	68,800	95,500	81,100	41,100	17,800	17,300	19,900	26,200	10,700	9,800	8,800	11,800
	Level 4+	800	7,400	7,200	3,600	2,000	1,100	800	900	900	400	400	400	700
	No Level Assigned	100	19,600	77,600	72,600	-	23,700	21,700	26,500	700	-	-	-	-
	Below Level 2 (excluding Skills for Life)	-	9,300	15,900	10,900	2,700	3,700	3,400	3,000	700	300	500	700	1,300
	Skills for Life	19,000	118,900	94,900	88,500	51,700	19,700	24,300	27,000	17,500	7,900	10,900	13,700	19,100
	Full Level 2	153,400	359,000	378,900	318,700	191,700	75,800	72,100	74,900	95,900	43,600	42,800	44,400	60,900
	Full Level 3	14,200	69,100	93,700	80,200	40,200	17,500	17,100	19,600	26,100	10,700	9,700	8,700	11,200

Notes

- 1) Figures for 2008/09 onwards are not comparable with earlier years as from 2008/09 onwards NVQs delivered in the workplace changed from being funded by FE to be funded by Train to Gain.
- 2) Figures for 2011/12 onwards are not directly comparable to earlier years as a Single Individualised Learner Record (ILR) data collection system has been introduced. Small technical changes have been made in the way learners from more than one provision type are counted, leading to a removal of duplicate learners and a reduction in overall learner numbers of approximately 2 per cent. More information on the Single ILR is available at: http://www.thedataservice.org.uk/NR/rdonlyres/C05DCDD5-67FE-4AD0-88B9-BEBC8F7F3300/0/SILR_Effects_SFR_Learners_June12.pdf
- 3) Workplace Learning includes Train to Gain and other Employer Responsive provision (except Apprenticeships).
- 4) Data for 2006/07 are available in the Workplace Learning Supplementary Tables: http://www.thedataservice.org.uk/Statistics/fe_data_library/workplace_learning/
- 5) Please see the general footnotes and the Workplace Learning footnotes section for further information on these tables.
- 6) Skills for Life starts and achievements can be at Level 2 or Below Level 2.
- 7) These tables include some learners aged under 19 who are eligible for funding on certain Workplace Learning programmes (such as Programmes for the Unemployed).

Table 6: Community Learning Participation and Achievement by Type (2007/08 to 2011/12) – Learner Volumes

Measure	Provision Type	Funded Learners							
		2007/08	2008/09	2009/10		2010/11		2011/12	
		Full Year	Full Year	Full Year	% change 08/09 to 09/10	Full Year	% change 09/10 to 10/11	Full Year	% change 10/11 to 11/12
Participation	Total Learners	709,200	755,000	752,800	*	699,400	-7.1%	683,300	-2.3%
	of which Personal and Community Development Learning	557,900	584,400	579,200	-0.9%	534,100	-7.8%	518,600	-2.9%
	of which Neighbourhood Learning in Deprived Communities	32,200	40,300	43,700	8.4%	46,600	6.5%	55,700	19.8%
	of which Family English, Maths and Language	67,100	71,000	71,300	*	65,400	-8.3%	58,700	-10.4%
	of which Wider Family Learning	75,300	80,500	79,600	-1.1%	75,400	-5.3%	72,800	-3.4%
Achievement	Total Learners	610,500	638,900	663,000	3.8%	608,200	-8.3%	594,500	-2.3%
	of which Personal and Community Development Learning	477,000	489,000	505,900	3.5%	458,600	-9.3%	445,400	-2.9%
	of which Neighbourhood Learning in Deprived Communities	28,400	34,400	39,800	15.6%	41,300	3.7%	50,100	21.4%
	of which Family English, Maths and Language	57,200	61,000	62,700	2.7%	57,000	-9.0%	50,900	-10.8%
	of which Wider Family Learning	67,300	71,400	72,600	1.6%	70,100	-3.4%	67,500	-3.8%

Notes

1) Figures for 2008/09 onwards are not directly comparable to earlier years as the introduction of demand led funding has changed how data is collected and how funded learners are defined from 2008/09 onwards. More information on demand led funding is available at:

<http://www.thedataservice.org.uk/datadictionary/businessdefinitions/Demand+Led+Funding.htm>

2) Figures for 2011/12 onwards are not directly comparable to earlier years as a Single Individualised Learner Record (ILR) data collection system has been introduced. Small technical changes have been made in the way learners from more than one provision type are counted, leading to a removal of duplicate learners and a reduction in overall learner numbers of approximately 2 per cent. More information on the Single ILR is available at:

http://www.thedataservice.org.uk/NR/rdonlyres/C05DCDD5-67FE-4AD0-88B9-BEBC8F7F3300/0/SILR_Effects_SFR_Learners_June12.pdf

3) Data for earlier years is available in the Community Learning Supplementary Tables:

http://www.thedataservice.org.uk/Statistics/fe_data_library/community_learning/

4) Please see the general footnotes and the Community Learning footnotes sections for all information on these tables.

Table 7.1: Adult (19+) Education and Training Success Rates by Level (2007/08 to 2011/12) – Percentages

Level		2007/08 Full Year	2008/09 Full Year	2009/10 Full Year	2010/11 Full Year	2011/12 Full Year
Education and Training Provision		80.5%	80.6%	80.3%	81.4%	83.9%
of which...	Skills for Life	73.1%	75.1%	74.3%	78.6%	80.1%
	Full Level 2	71.4%	72.1%	74.8%	78.5%	82.6%
	Full Level 3	70.6%	70.1%	75.1%	77.7%	78.4%
	Level 2	79.6%	80.5%	80.3%	80.2%	82.7%
	Level 3	77.1%	78.4%	78.7%	78.8%	79.4%

Table 7.2: Apprenticeship Success Rates by Level & Age (2007/08 to 2011/12) – Percentages

Level	Age	2007/08 Full Year	2008/09 Full Year	2009/10 Full Year	2010/11 Full Year	2011/12 Full Year
Intermediate Level Apprenticeship	Under 19	64.2%	68.3%	71.1%	72.2%	71.9%
	19-24	64.8%	71.7%	74.6%	76.7%	74.8%
	25+	66.3%	76.6%	77.5%	80.6%	71.4%
	Total	64.4%	70.4%	73.4%	75.3%	72.6%
	of which 19+	64.8%	72.8%	75.6%	78.0%	73.0%
Advanced Level Apprenticeship	Under 19	60.7%	73.6%	76.2%	79.0%	76.5%
	19-24	64.5%	70.8%	75.4%	79.7%	77.8%
	25+	64.7%	73.9%	71.5%	76.2%	75.1%
	Total	62.8%	72.1%	74.8%	78.6%	76.5%
	of which 19+	64.5%	71.2%	74.0%	78.4%	76.4%
Higher Apprenticeship	Under 19				83.2%	64.4%
	19-24				84.8%	74.4%
	25+				84.2%	70.1%
	Total				84.6%	72.6%
	of which 19+				84.8%	73.2%
All Apprenticeships	Under 19	63.3%	69.6%	72.4%	74.0%	73.1%
	19-24	64.7%	71.3%	74.9%	77.8%	75.9%
	25+	65.4%	75.9%	75.1%	78.8%	72.6%
	Total	63.9%	70.9%	73.8%	76.4%	73.8%
	of which 19+	64.7%	72.2%	75.0%	78.2%	74.2%

Table 7.3: Adult (19+) Workplace Learning Success Rates by Level (2011/12) – Percentages

Workplace Learning	Level	2011/12 Full Year
		90.6%
of which...	Skills for Life	92.5%
	Full Level 2	90.9%
	Full Level 3	86.9%

Notes

1) Education and Training Success Rates for 2008/09 onwards are not directly comparable to earlier years as the introduction of demand led funding has changed how data is collected and how funded learners are defined from 2008/09 onwards. Apprenticeship success rates are not affected by demand led funding. More information on demand led funding is available at:

<http://www.thedataservice.org.uk/datadictionary/businessdefinitions/Demand+Led+Funding.htm>

2) Figures for 2011/12 onwards are not directly comparable to earlier years as a Single Individualised Learner Record (ILR) data collection system has been introduced. Small technical changes have been made in the way learners from more than one provision type are counted, leading to a removal of duplicate learners and a reduction in overall learner numbers of approximately 2 per cent. More information on the Single ILR is available at:

http://www.thedataservice.org.uk/NR/rdonlyres/C05DCDD5-67EF-4AD0-88B9-BEBC8E7F3300/0/SILR_Effects_SFR_Learners_June12.pdf

3) Data for earlier years are available in the FE Data Library:

http://www.thedataservice.org.uk/Statistics/fe_data_library/

4) Workplace Learning Success Rates for 2011/12 onwards are not comparable to earlier years. Please see the Workplace Learning footnotes section for further information on this.

5) Please see the general footnotes and the FE and Skills footnotes sections for further information on these tables.

Table 8.1: Level of Highest Qualification Held by People aged 19-59/64 in England (Quarter 4)¹ - percentages

Year	All people aged 19-59/64 ³ (thousands)	Level 4 and above	Level 3	Level 3 and above	Level 2	Level 2 and above	Below Level 2 (incl no qualifications)
2006	29,427	33.0	20.2	53.2	18.6	71.8	28.2
2007	29,584	34.1	20.7	54.8	18.4	73.2	26.8
2008	29,737	34.5	20.7	55.2	19.0	74.2	25.8
2009	29,894	36.4	20.7	57.1	19.6	76.6	23.4
2010	30,105	37.6	21.0	58.5	19.2	77.7	22.3
2011	30,279	38.1	21.3	59.4	19.5	78.9	21.1
2012	30,399	39.5 ^P	22.1 ^P	61.6 ^P	19.0 ^P	80.6 ^P	19.4 ^P
2012 95% CI (+/-)		0.4	0.3	0.3	0.3	0.4	0.4

Table 8.2: Level of Highest Qualification Held by People aged 19-59/64 in England (Quarter 4)¹ - volumes (thousands)

Year	All people aged 19-59/64	Level 4 and above	Level 3	Level 3 and above	Level 2	Level 2 and above	Below Level 2 (incl no qualifications)
2006	29,427	9,716	5,943	15,659	5,481	21,140	8,288
2007	29,584	10,093	6,116	16,208	5,456	21,664	7,919
2008	29,737	10,263	6,146	16,409	5,653	22,061	7,675
2009	29,894	10,868	6,189	17,057	5,845	22,902	6,993
2010	30,105	11,305	6,315	17,620	5,786	23,406	6,699
2011	30,279	11,522	6,457	17,979	5,908	23,888	6,391
2012	30,399	12,007 ^P	6,728 ^P	18,735 ^P	5,762 ^P	24,497 ^P	5,903 ^P
2012 95% CI (+/-)		130	95	99	91	121	121

Notes

1) Source: The Labour Force Survey.

2) Estimates were revised in March 2011 as a result of an improved methodology being adopted - see methodological note for further details.

3) Estimates have been revised in March 2012 having been produced using reweighted datasets produced by the Office for National Statistics based on the population estimates published in 2011, and therefore may not agree with estimates from previous publications.

4) Males aged 19 - 64 and females aged 19 - 59.

P) Provisional estimate - these estimates will be finalised in March 2014.

Table 9.1: Level Of Highest Qualification Held By Economically Active Adults In England (Quarter 4)¹ - percentages

Year	Economically active adults ³ (thousands)	Level 4 and above	Level 3	Level 3 and above	Level 2	Level 2 and above	Below Level 2 (incl no qualifications)
2006	24,238	35.8	20.8	56.6	19.6	76.2	23.8
2007	24,397	36.8	21.1	57.9	19.4	77.3	22.7
2008	24,672	36.9	21.1	58.0	20.0	78.0	22.0
2009	24,670	38.9	21.0	59.9	20.5	80.3	19.7
2010	24,800	40.2	21.2	61.4	20.1	81.5	18.5
2011	24,970	40.5	21.5	62.1	20.4	82.4	17.6
2012	25,382	42.0 ^P	22.1 ^P	64.1 ^P	19.8 ^P	83.9 ^P	16.1 ^P
2012 95% CI (+/-)		0.5	0.4	0.3	0.3	0.4	0.4

Table 9.2: Level Of Highest Qualification Held By Economically Active Adults In England (Quarter 4)¹ - volumes (thousands)

Year	Economically active adults ³	Level 4 and above	Level 3	Level 3 and above	Level 2	Level 2 and above	Below Level 2 (incl no qualifications)
2006	24,238	8,681	5,046	13,727	4,744	18,471	5,767
2007	24,397	8,975	5,151	14,126	4,731	18,857	5,540
2008	24,672	9,102	5,209	14,310	4,940	19,250	5,422
2009	24,670	9,598	5,173	14,771	5,046	19,818	4,852
2010	24,800	9,965	5,262	15,227	4,976	20,203	4,597
2011	24,970	10,124	5,375	15,500	5,084	20,583	4,386
2012	25,382	10,662 ^P	5,607 ^P	16,270 ^P	5,014 ^P	21,284 ^P	4,099 ^P
2012 95% CI (+/-)		119	89	85	86	108	108

Notes

1) Source: The Labour Force Survey.

2) Estimates for 2006 onwards were revised in March 2011 as a result of an improved methodology being adopted - see methodological note for further details.

3) Estimates have been revised in March 2012 having been produced using reweighted datasets produced by the Office for National Statistics based on the population estimates published in 2011, and therefore may not agree with estimates from previous publications.

4) Economically active adults are defined as men aged 18 to 64 and women aged 18 to 59 either in employment or International Labour Organisation unemployed.

P) Provisional estimate - these estimates will be finalised in March 2014.

Table 10: Vocational Qualification Achievements in the UK by Qualification Type, 2006 (October) to 2012 (December)

Quarter	National Vocational Qualification	Occupational Qualification	Qualifications and Credit Framework Qualification	Vocationally Related Qualification	Other Vocational Qualifications	Total
October 2006 to December 2006	121,300	7,100	-	411,400	382,600	922,400
January 2007 to March 2007	126,600	5,700	-	406,800	393,800	932,900
April 2007 to June 2007	129,600	6,000	400	507,900	678,200	1,322,100
July 2007 to September 2007	252,900	8,000	500	920,500	1,151,500	2,333,400
Total 2006/07 Academic Year	630,400	26,800	900	2,246,600	2,606,200	5,510,900
October 2007 to December 2007	128,700	4,900	1,300	408,500	423,500	966,900
January 2008 to March 2008	140,700	4,900	4,600	426,000	500,900	1,077,200
April 2008 to June 2008	170,600	6,400	8,600	643,100	755,700	1,584,400
July 2008 to September 2008	287,900	8,300	19,200	983,800	1,416,700	2,715,800
Total 2007/08 Academic Year	727,900	24,500	33,700	2,461,400	3,096,800	6,344,300
October 2008 to December 2008	164,100	5,800	16,400	416,200	474,500	1,077,000
January 2009 to March 2009	169,600	5,300	39,300	409,900	590,400	1,214,500
April 2009 to June 2009	216,400	6,300	62,000	715,900	829,300	1,830,000
July 2009 to September 2009	372,600	9,100	102,600	1,064,800	1,591,600	3,140,800
Total 2008/09 Academic Year	922,900	26,500	220,300	2,606,800	3,485,800	7,262,200
October 2009 to December 2009	212,000	6,000	85,100	414,700	457,500	1,175,300
January 2010 to March 2010	204,000	5,100	135,200	388,000	552,700	1,285,000
April 2010 to June 2010	213,500	5,700	203,000	726,100	831,100	1,979,300
July 2010 to September 2010	349,500	6,400	353,700	1,078,700	1,727,400	3,515,700
Total 2009/10 Academic Year	979,000	23,200	777,000	2,607,500	3,568,600	7,955,300
October 2010 to December 2010	179,600	6,200	274,800	285,700	422,900	1,169,300
January 2011 to March 2011	155,300	4,100	454,400	166,300	486,500	1,266,600
April 2011 to June 2011	128,600	3,600	722,600	385,700	670,900	1,911,400
July 2011 to September 2011	124,300	3,600	1,385,200	561,800	1,473,700	3,548,600
Total 2010/11 Academic Year	587,800	17,500	2,837,100	1,399,600	3,054,000	7,896,000
October 2011 to December 2011	51,000	2,000	807,600	55,800	355,300	1,271,700
January 2012 to March 2012	31,100	1,000	821,900	51,300	479,700	1,385,000
April 2012 to June 2012	22,600	700	1,226,200	195,100	628,700	2,073,200
July 2012 to September 2012	24,200	900	2,429,300	273,700	1,187,300	3,915,400
Total 2011/12 Academic Year	128,800	4,600	5,285,000	575,800	2,651,000	8,645,300
October 2012 to December 2012	11,800	200	1,016,500	21,100	295,900	1,345,400
Total 2012/13 Year to Date	11,800	200	1,016,500	21,100	295,900	1,345,400

Notes

- 1) This table covers all levels of vocational qualifications reported through Ofqual. Data are supplied by awarding organisations.
- 2) For data relating to Vocational Qualifications, the Academic year runs from October to September. For example, the 2006/07 academic year runs from October 2006 to September 2007.
- 3) The data in this table has been subjected to revisions.
- 4) Please see general notes and Vocational Qualifications footnotes section for all information on these tables.

Table 11: Adult (19+) FE and Skills Participation by Level (2012/13 – in-year estimates) – Learner Volumes

		Funded Learners	
		2012/13	
		August to January (provisional)	
Level		2,131,300	
Total Learners	of which...		
	Below Level 2 (excluding Skills for Life)	413,300	
	Skills for Life	748,200	
	Full Level 2	670,600	
	Full Level 3	391,700	
	Level 2	831,800	
	Level 3	460,200	
	Level 4+	30,800	
	No Level Assigned	471,700	

Table 12: Adult (19+) FE and Skills – Skills for Life Participation by Level (2012/13 – in-year estimates) – Learner Volumes

		Funded Learners	
		2012/13	
		August to January (provisional)	
Level		748,200	
Participation	Total Learners		
	of which English	542,000	
	of which entry level	77,200	
	of which level 1	246,800	
	of which level 2	225,300	
	of which maths	535,700	
	of which entry level	62,600	
	of which level 1	251,900	
	of which level 2	229,800	
	of which ESOL (English for Speakers of Other Languages)	103,600	
	of which entry level	86,300	
	of which level 1	14,500	
	of which level 2	5,000	

Notes

1) These tables include Apprenticeships, Workplace Learning, Community Learning and Education and Training provision taken at General Further Education Colleges (including Tertiary), Sixth Form Colleges, Special Colleges (Agricultural and Horticultural Colleges and Art and Design Colleges), Specialist Colleges and External Institutions.

2) These tables show in-year estimates for 2012/13. Tables 1 and 3 show full year volumes for previous years. It is not possible to directly compare provisional 2012/13 estimates with figures for previous years.

3) 250,400 learners benefited from support for the unemployed (those nearest the workforce), 248,600 of which were aged 19+. These are defined as those learners reporting that they were in receipt of Employment and Support Allowance - Work Related Activity Group (ESA WRAG) or Jobseeker's Allowance (JSA).

4) In the first six months of 2012/13 there were 38,300 offenders aged 18 or over in the prison system participating in learning. These offenders were funded via the Offenders' Learning and Skills Service (OLASS) budget.

5) Please see the general footnotes and FE and Skills footnotes section for further information on these tables.

Table 13.1: All Age Apprenticeship Programme Starts by Level and Age (2012/13 – in-year estimates)

Age		2012/13		
		Year to Date August to January (provisional)	Quarter 1 (provisional)	Quarter 2 (provisional)
Intermediate Level Apprenticeship	Under 19	47,700	34,600	13,100
	19-24	48,900	30,000	18,900
	25+	50,200	30,000	20,200
	Total	146,800	94,600	52,200
	of which 19+	99,100	60,000	39,100
Advanced Level Apprenticeship	Under 19	21,500	17,100	4,400
	19-24	32,000	21,500	10,500
	25+	41,700	24,400	17,300
	Total	95,200	63,000	32,200
	of which 19+	73,700	45,900	27,800
Higher Apprenticeship	Under 19	400	300	100
	19-24	1,200	900	300
	25+	1,400	800	600
	Total	3,000	2,000	1,000
	of which 19+	2,600	1,700	900
All Apprenticeships	Under 19	69,600	52,100	17,500
	19-24	82,100	52,400	29,600
	25+	93,300	55,100	38,200
	Total	245,000	159,700	85,300
	of which 19+	175,400	107,600	67,800

Table 13.2: All Age Apprenticeship Framework Achievements by Level and Age (2012/13 – in-year estimates)

Age		2012/13		
		Year to Date August to January (provisional)	Quarter 1 (provisional)	Quarter 2 (provisional)
Intermediate Level Apprenticeship	Under 19	17,400	10,800	6,600
	19-24	20,400	11,600	8,800
	25+	25,800	14,700	11,100
	Total	63,600	37,200	26,400
	of which 19+	46,300	26,400	19,900
Advanced Level Apprenticeship	Under 19	7,700	5,000	2,700
	19-24	12,200	7,200	5,000
	25+	16,100	8,800	7,300
	Total	36,000	21,000	15,000
	of which 19+	28,300	15,900	12,400
Higher Apprenticeship	Under 19	-	-	-
	19-24	400	300	200
	25+	200	100	100
	Total	700	400	200
	of which 19+	600	400	200
All Apprenticeships	Under 19	25,100	15,900	9,200
	19-24	33,100	19,100	14,000
	25+	42,100	23,600	18,500
	Total	100,300	58,600	41,700
	of which 19+	75,200	42,700	32,500

Notes

1) This table shows in-year estimates for 2012/13. Apprenticeship starts and achievements figures for earlier years are available in Table 4 of this release. It is not possible to directly compare provisional 2012/13 estimates with figures for previous years.

2) Please see the general footnotes and the Apprenticeships footnotes section for further information on these tables.

Table 14.1: Apprenticeship Grant for Employers Scheme (AGE 16 to 24) – Pipeline Starts and Payments Made (February 2012 to January 2013 in-year estimates)

Age		February 2012 to January 2013	
		Payments Made	Pipeline Starts
Intermediate Level Apprenticeship	Under 19	10,900	2,000
	19-24	4,700	1,300
	Total	15,600	3,300
Advanced Level Apprenticeship	Under 19	3,100	500
	19-24	2,000	500
	Total	5,100	1,000
Higher Apprenticeship	Under 19	-	-
	19-24	-	-
	Total	100	-
All Apprenticeships	Under 19	14,100	2,500
	19-24	6,700	1,800
	Total	20,800	4,300

Notes

- 1) AGE 16 to 24 was launched in February 2012. Payments are drawn down once the new Apprentice has been in post for 13 weeks, therefore Apprenticeships starting after 1 November 2012 are not included in the Payments Made column because they had not yet triggered a payment.
- 2) Pipeline Starts show those starting between February 2012 and January 2013 who have not yet qualified for a payment, but the payment would be made once the Apprentice has been in post for 13 weeks.
- 3) AGE 16 to 24 starts are defined through the Learning Delivery Funding and Monitoring Codes with values of 132 or 133 as per the ILR specification (http://www.theia.org.uk/ilr/ilrdocuments/201112_ildetail.htm). These are validated by the Skills Funding Agency.
- 4) Starts in this table will also be counted in the main Apprenticeship tables.

Table 14.2: Starts on the Access to Apprenticeship Pathway (2011/12 and 2012/13 in-year estimates)

Age		Starts on Access to Apprenticeship Pathway in 2011/12	Starts on Access to Apprenticeship Pathway in 2012/13			
			August to January (provisional)	Quarter 1 (provisional)	Quarter 2 (provisional)	
		Full Year				
All starts on the Access to Apprenticeship pathway		Under 19	5,700	2,100	1,300	800
		19-24	1,600	1,100	500	500
		Total	7,200	3,200	1,800	1,300
of which	have converted to paid employment to complete their Apprenticeship in any year	Under 19	2,200	300	300	100
		19-24	600	200	100	-
		Total	2,900	500	400	100
	have not yet converted to paid employment to complete their Apprenticeship in any year	Under 19	3,400	1,800	1,000	700
		19-24	900	900	400	500
		Total	4,400	2,700	1,400	1,300

Notes

- 1) People starting training under the Access to Apprenticeship pathway are not counted as an Apprentice until they secure paid employment to complete their Apprenticeship in the usual way. For more information on the Access pathway, see: <http://www.apprenticeships.org.uk/Partners/Policy/AccessToApprenticeships.aspx>.
- 2) The year indicates when the learner started on the Access to Apprenticeship pathway. Conversion to paid employment to complete an Apprenticeship does not necessarily occur in the same year as the learner started the Access to Apprenticeship pathway.
- 3) People shown in this table as having converted to paid employment to complete their Apprenticeship in the same year as they started on the Access to Apprenticeship pathway, will also be counted in the main Apprenticeship tables.
- 4) These tables show in-year estimates for 2012/13. It is not possible to directly compare provisional 2012/13 estimates with figures for previous years.

Table 15.1: Workplace Learning Starts by Level (2012/13 – in-year estimates)

		2012/13		
		Year to Date August to January (provisional)	Quarter 1 (provisional)	Quarter 2 (provisional)
Level				
Total		56,600	29,800	26,800
of which	Below Level 2	15,200	7,700	7,500
	Level 2	36,900	19,600	17,400
	Level 3	4,000	2,400	1,600
	Level 4+	300	200	100
	No Level Assigned	300	-	300
	Below Level 2 (excluding Skills for Life)	1,400	600	800
	Skills for Life	18,000	9,400	8,500
	Full Level 2	31,300	16,500	14,800
	Full Level 3	2,800	1,700	1,100

Table 15.2: Workplace Learning Achievements by Level (2012/13 – in-year estimates)

		2012/13		
		Year to Date August to January (provisional)	Quarter 1 (provisional)	Quarter 2 (provisional)
Level				
Total		77,900	45,800	32,000
of which	Below Level 2	9,000	5,100	3,900
	Level 2	59,200	35,300	23,900
	Level 3	9,100	5,200	3,900
	Level 4+	500	300	200
	No Level Assigned	-	-	-
	Below Level 2 (excluding Skills for Life)	1,000	600	400
	Skills for Life	12,700	7,300	5,400
	Full Level 2	53,800	32,100	21,700
	Full Level 3	7,000	4,000	3,000

Notes

1) These tables show in-year estimates for 2012/13. Figures for earlier years are available in Table 5 of this release. It is not possible to directly compare provisional 2012/13 estimates with figures for previous years.

2) Skills for Life starts and achievements can be at Level 2 or Below Level 2.

3) These tables include some learners aged under 19 who are eligible for funding on certain Workplace Learning programmes.

4) Please see the general footnotes and the Workplace Learning footnotes section for further information on these tables.

Table 16: Community Learning Participation by Type (2012/13 – in-year estimates) – Learner Volumes

Measure	Provision Type	Funded Learners
		2012/13
		August to January (provisional)
	Total Learners	363,200
Participation	of which Personal and Community Development Learning	297,700
	of which Neighbourhood Learning in Deprived Communities	17,400
	of which Family English, Maths and Language	22,700
	of which Wider Family Learning	31,900

Notes

1) This table show in-year estimates for 2012/13. Community Learning participation and achievement figures for earlier years are available in Table 6 of this release. It is not possible to directly compare provisional 2012/13 estimates with figures for previous years.

2) Please see the general footnotes and the Community Learning footnotes section for further information on these tables.