



Department  
for Education

# Statistical First Release



## NEET Statistics - Quarterly Brief – Quarter 4 2012 February 2013

### Introduction

This note sets out the available statistics on young people not in education, employment or training (NEET) and young people not in education or training (NET) from three data sources:

#### i) Participation Statistical First Release (SFR)

These are the authoritative national estimates of NEET and NET rates. They are published annually in the 'Participation in Education, Training and Employment by 16-18 Year Olds in England' SFR. These data are only available annually and cannot be disaggregated to sub-national levels. These were updated in February 2013 to take account of revised 2011 Census data, published by the Office for National Statistics (ONS).

#### ii) Quarterly Labour Force Survey (LFS)

Analysis of the LFS allows in-year estimates to be made of NEET and NET trends as well as estimates for other age groups, including 16-24, 18-24 and 19-24. The quarterly LFS estimates cannot be directly compared with the headline Participation SFR series which is based on more detailed but less timely data. This LFS data has not yet been reweighted to reflect ONS's revised population estimates based on the 2011 Census. The ONS are due to complete this work in 2014.

The most recent LFS based estimates for NEET, from Quarter 4 2012, are shown in the following table along with 2010 and 2011 data.

**Table: NEET rates for different age cohorts: England Q4 2010 – Q4 2012**

	Quarter 4 2010	Quarter 4 2011	Quarter 4 2012	% point change from Q4 2011 to Q4 2012
Age 16	5.0%	6.0%	4.8%	-1.1
Age 17	6.6%	7.8%	5.4%	-2.4*
Age 18	13.9%	14.9%	14.4%	-0.5
Age 16-18	8.6%	9.6%	8.4%	-1.2
Age 19-24	18.8%	18.7%	17.9%	-0.8
Age 16-24	15.6%	15.9%	15.0%	-0.9

Source: Labour Force Survey Quarter 4

\* Change is statistically significant

#### iii) Local Authorities' Client Caseload Information System (CCIS).

CCIS is the management information data that results from the duty on all Local Authorities to track the activity of young people aged 16-19 years old resident in their area. Data can be aggregated to provide estimates for regions within England.

The data from all three sources cover England.

**Section 1- Trends.** Focuses on the key trends in the NEET and NET data series for 16-18 year olds.

**Section 2- Methodology and Notes.** Explains the methodology used to derive the different series, and gives guidance on their usage.

**Section 3- Tables.** Contains four tables showing numbers and percentages for the key data series on NET and NEET.

28th February 2013

Coverage: England

Theme: Children,  
Education and skills

SFR09/2013

#### Issued by

Department for Education  
Sanctuary Buildings  
Great Smith Street  
London SW1P 3BT

#### Telephone:

Press Office

020 7925 6789

Public Enquiries

0870 000 2288

#### Statistician

Emily Uttley

0114 274 2442

#### Email

[info@education.gsi.gov.uk](mailto:info@education.gsi.gov.uk)

#### Internet

<http://tinyurl.com/NEET-Statistics-Q4-2012>

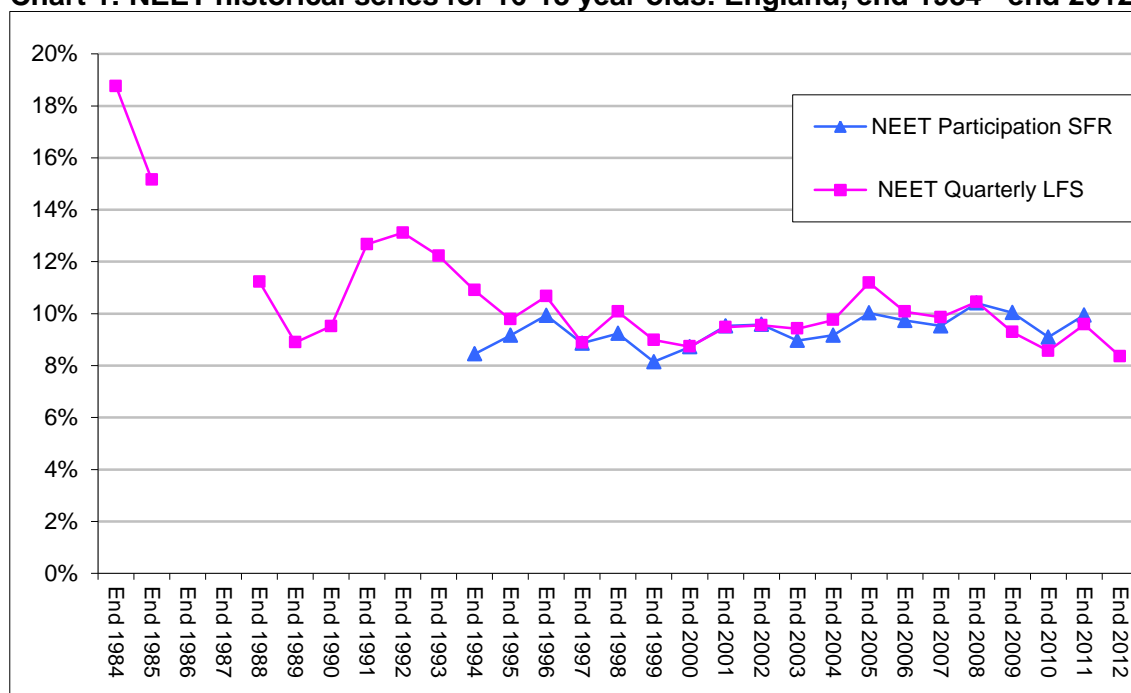
## Trends

### Historical Context

Understanding the historical trends in NEET rates is an important part of placing current performance in perspective. In order to do so, we have to use historical LFS data that is not directly comparable with any other series in this note, and so should be used as context only. The chart below also shows the NEET Participation SFR measure for comparison.

Since the fall in the proportion of NEET in the mid-1990s, approximately 9-10% of 16-18 year olds have been NEET.

**Chart 1: NEET historical series for 16-18 year olds: England, end 1984 - end 2012**



Source: Statistical First Release (SFR) 'Participation in Education, Training and Employment by 16-18 Year Olds in England' and analysis of Labour Force Survey (LFS). See footnote for Notes on LFS estimates<sup>1</sup>:

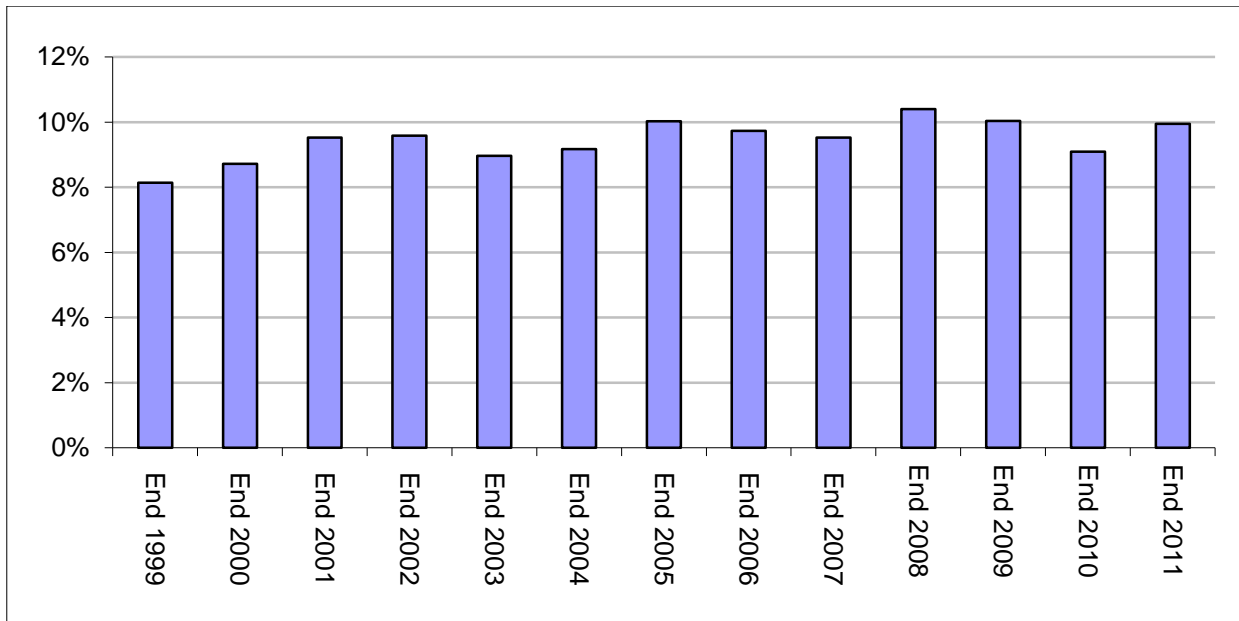
#### a. NEET Participation SFR series (last updated February 2013)

The Department's Statistical First Release (SFR) 'Participation in Education, Training and Employment by 16-18 Year Olds in England' (link [here](#)) is the primary source of national data on 16-18 year olds NEET.

The latest Participation SFR NEET rate for 16-18 year olds, at end 2011, was 9.9%, a rise of 0.8 ppts from 9.1% at end 2010. The rise was a result of the employment rate of 16-18 year olds NET falling, despite participation in education and training increasing. Participation in education and training has risen every year since end 2001, from 75.3% to 83.1% at end 2011. However, the impact of increasing participation on the proportion NEET is counter-balanced by a falling employment rate of those 16-18 year olds not in education and training (NET). The employment rate for 16-18 year olds NET over the same period fell from 61.4% to 41.3%.

<sup>1</sup> Notes on LFS estimates: Annual data sets are used for 1984 to 1991. Estimates for 1986 and 1987 are unavailable due to data issues. Quarter 4 data is used from 1992 onwards. Between 1992 and 1994 the data does not exclude individuals answering yes to the qulnow variable, and between 1995 and 1999 individuals sampled in December were not asked the qulnow variable. This may mean that between 1992 and 1999 the proportion NEET is very slightly over-estimated.

**Chart 2: NEET Participation SFR series, age 16-18: England, end 1999 – end 2011**



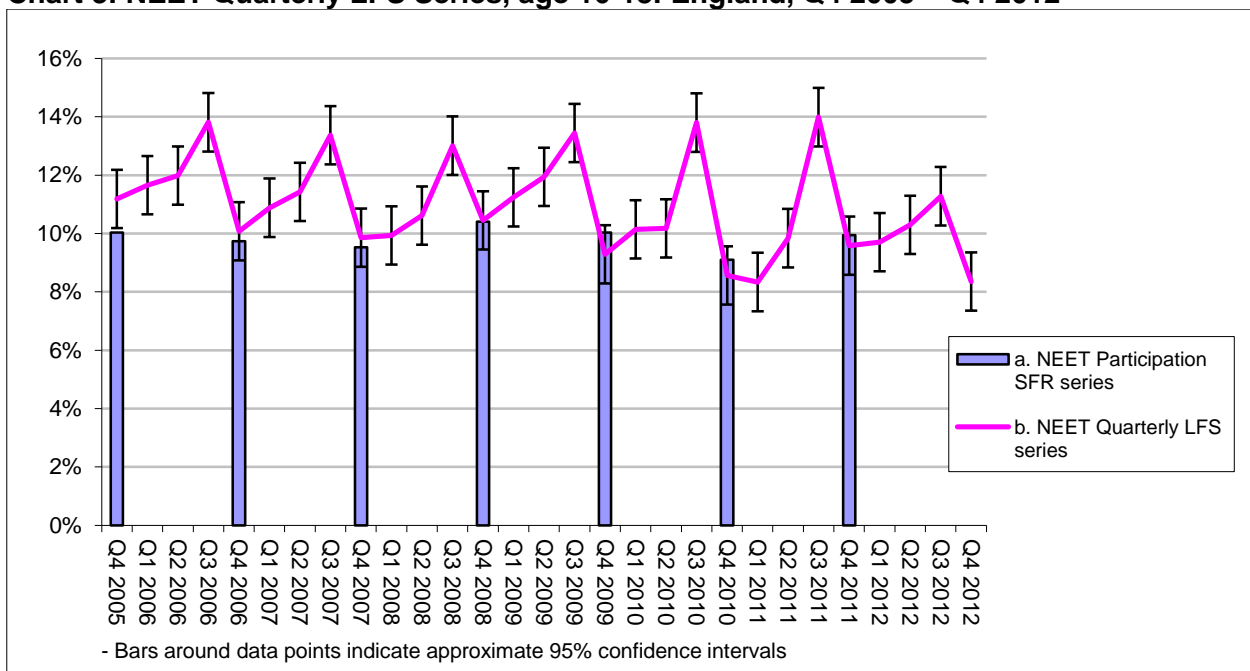
Source: Statistical First Release (SFR) 'Participation in Education, Training and Employment by 16-18 Year Olds in England'

**b. NEET quarterly LFS series (last updated February 2013)**

We can monitor trends in NEET rates between the publications of the Participation SFR series using quarterly LFS data.

The trend data for 16-18 year olds shows seasonal patterns that reflect the academic year: lower rates in autumn (Quarter 4, October to December) followed by a gradual rise in spring and early summer (Quarters 1 & 2, January to June) with a peak in late summer (Quarter 3, July to September).

**Chart 3: NEET Quarterly LFS Series, age 16-18: England, Q4 2005 – Q4 2012**



Source: Quarterly Labour Force Survey and Participation SFR.  
 Note: The Q4 2012 SFR data will be available in June 2013.

The latest data show that the proportion of 16-18 year olds NEET decreased by 1.2 ppts to 8.4% in the fourth quarter of 2012, compared to the fourth quarter of 2011. This decrease was not statistically significant.

This decrease of 1.2 percentage points was driven broadly equally by two factors; an increase in participation in education and training, and an increase in the NET employment rate. The NET employment rate for 16-18 increased by 5.5 percentage points, from 39.7% in Q4 2011 to 45.2% in Q4 2012; this was the first Quarter 4 increase since 2006.

There had been some evidence of increasing seasonality in the NEET data, seen by comparing Q4 troughs to the following Q3 peak (roughly the same cohort of people). The difference between Q4 2008 and Q3 2009 was 3.0 ppts; between Q4 2009 and Q3 2010 it was 4.5 ppts; and between Q4 2010 and Q3 2011 it was 5.4 ppts. However, the increase between Q4 2011 to Q3 2012 was just 1.7 ppts.

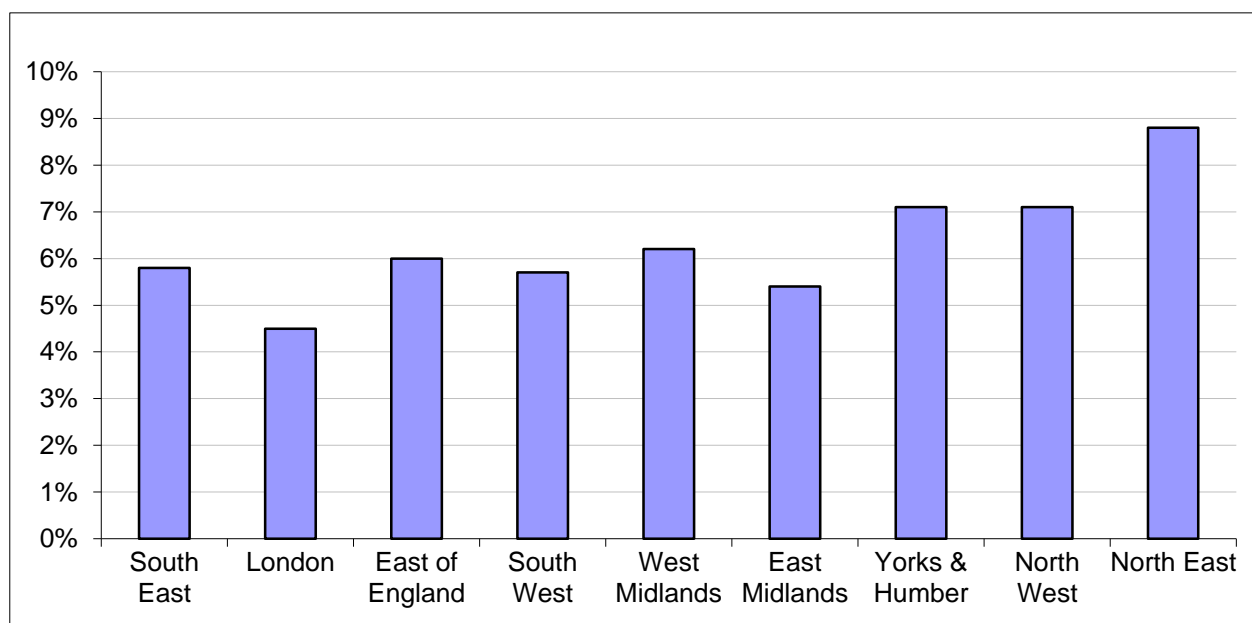
### c. Regional NEET (last updated April 2012)

The regional picture on 16-18 NEET is taken from Local Authorities' Client Caseload Information System (CCIS).

CCIS data indicates that the northern regions have higher NEET rates, i.e. Yorkshire and Humberside, North West and North East, within England. In comparison, London and East Midlands have the lowest NEET rates.

Note that CCIS data tend to show a lower percentage NEET than either the Participation SFR or LFS data sources.

**Chart 4: Regional NEET, age 16-18: England, Nov 2011-Jan 2012 average**



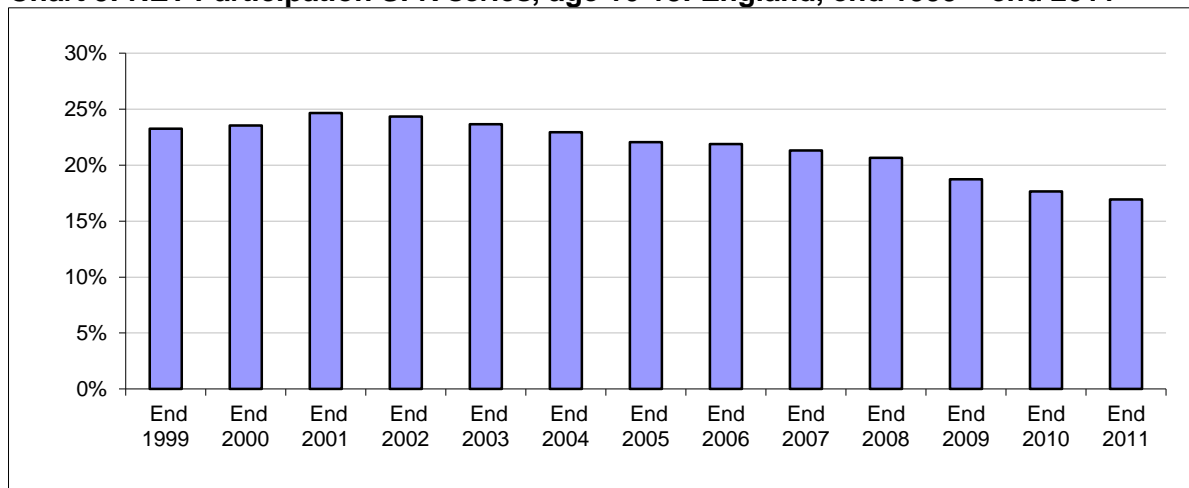
Source: Client Caseload Information System

Note: Local Authority CCIS data are published annually. In addition, regional NEET estimates for 16-24 year olds based on the LFS are now published as supplementary tables alongside this Quarterly Brief. Both publications appear on the DfE website: [Link Here](#).

**d. NET Participation SFR series (last updated February 2013)**

When examining NEET data, it is also important to contextualise it with data on the proportion of young people not in education or training (NET). These data are also taken from the SFR 'Participation in Education, Training and Employment by 16-18 Year Olds in England'.

**Chart 5: NET Participation SFR series, age 16-18: England, end 1999 – end 2011**



Source: Statistical First Release (SFR) 'Participation in Education, Training and Employment by 16-18 Year Olds in England'

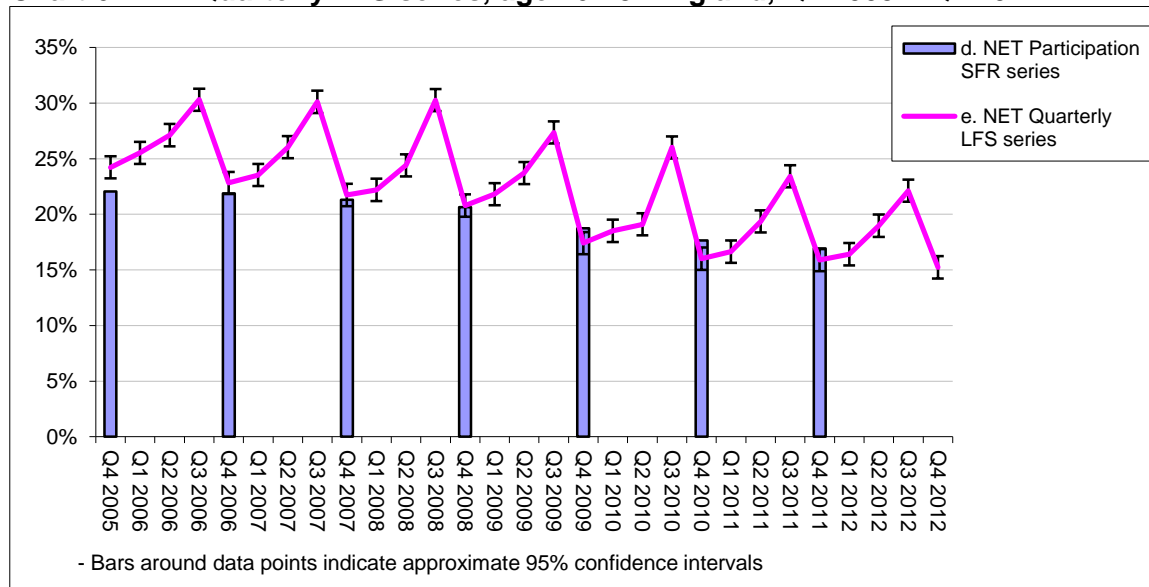
The latest Participation SFR NET rate, for end 2011, was 16.9%. This is the lowest Participation SFR NET rate for 16-18 year olds since consistent records began in 1994, and the tenth successive annual fall since 2001.

**e. NET quarterly LFS series (last updated February 2013)**

As with the NEET data, we can look at the in-year NET trend data using the quarterly LFS. The NET series shows the same seasonal pattern as the NEET series.

The proportion of 16-18 year olds NET fell by 0.6 ppts to 15.2% in the fourth quarter of 2012, compared to 15.9% in the fourth quarter of 2011. Although this was not statistically significant, it was the lowest quarter 4 rate since consistent records began in 2000, and the proportion NET has steadily decreased, by 9.0 ppts, since 2005.

**Chart 6: NET Quarterly LFS series, age 16-18: England, Q4 2005 – Q4 2012**



Source: Quarterly Labour Force Survey and Participation SFR.  
 Note: The Q4 2012 SFR data will be available in June 2013.

## 2. Methodology and Notes

### a. NEET and NET Participation SFR series

Description	These data give the definitive measures for 16-18 NEET and NET rates in England.
Uses	These series should be used as the national time series for 16-18 year olds NEET and NET in England. The NET series should be used as context for any NEET data.
Geographical Coverage	England
Age coverage	Academic age 16 to 18
Published source	Statistical First Release (SFR) 'Participation in Education, Training and Employment by 16-18 Year Olds in England'
Primary sources	The Schools' Census Pupil Level Annual Schools' Census The Individualised Learner Record (ILR) Higher Education Statistics Agency (HESA). Higher Education Students Early Statistics (HESES) Labour Force Survey Mid-year estimates and projections of population from the Office for National Statistics (ONS)
Last period covered	End 2011
Last published	February 2013 (include revised population estimates based on Census 2011)
Next published	June 2013

### b. NEET and NET quarterly LFS series

Description	These series are quarterly estimates of NEET and NET amongst young people from the LFS. It is not directly comparable with the Participation SFR measure.
Uses	These series provide more timely data on the recent trends in NEET and NET since the last Participation SFR. Trends should be assessed by comparing the current quarter with the same quarter in the previous year to account for seasonal effects. Quarter on quarter changes, i.e. Quarter 4 to Quarter 1, should not be quoted. The NET series should be used as context for any NEET data.
Geographical coverage	England
Age coverage	Academic age 16 to 24
Published source	Quarterly Labour Force Survey
Primary sources	Quarterly Labour Force Survey
Last Period Covered	Quarter 4 2012
Last published	February 2012 (does <b>not</b> include revised population estimates based on Census 2011)
Next published	May 2013

### c. Regional NEET

Description	<p>This series is a 3 month average snapshot estimate of the regional NEET rate taken from the Local Authority Client Caseload Information System (CCIS) data. It is neither directly comparable with the LFS nor the Participation SFR series due to the use of 'currency' rules. The activity status of young people in education or employment is not actively checked every month, but has a shelf life depending on the type of educational course or the nature of the employment.</p> <p>For young people whose currency is lapsed a historical assumption is made on the proportion NEET, taking into account their previously reported activity.</p> <p>Full details are published in a technical specification available here: <a href="#">NCCIS management information requirement</a></p> <p>The combination of both factors leads to estimates of NEET in the CCIS data that tend to be lower than those estimated from the LFS or those reported in the annual Participation Statistical First Release (SFR).</p>
Uses	This series shows the data, aggregated in regions, used by Local Authorities to inform local activity and target setting.
Geographical Coverage	England
Age coverage	Academic age 16 to 18 (previously calendar age)
Published source	Management information published on the DfE website as policy data: <a href="#">16- to 18-year-olds NEET</a>
Primary sources	Client Caseload Information System (CCIS)
Last Period Covered	November 2011 – January 2012 average.
Last published	April 2012
Next published	Due April 2013

#### **d. Scheduled revisions to previously published statistics**

Labour Force Survey (LFS) datasets are routinely reweighted in line with population estimates. The most recent update introduced a new weighting variable, PWT11, to LFS datasets from Quarter 3 2009 onwards.

The PWT11 weights do not reflect the most recent population estimates for England and Wales, announced by the Office for National Statistics (ONS) on 16<sup>th</sup> July 2012. ONS plan to release LFS data (from 2001 onwards) reweighted in line with the 2011 Census, in 2014.

ONS have produced a comparison of the 2011 Census and the LFS labour market indicators which can be found at the following link: <http://www.ons.gov.uk/ons/rel/census/2011-census/key-statistics-for-local-authorities-in-england-and-wales/rpt-labour.html>

In contrast, this Statistical Release reproduces statistics from the DfE '[Participation in Education, Training and Employment by 16-18 Year Olds in England](#)' SFR which rely on mid-year population estimates which have been revised based on the 2011 Census.

#### **e. National Statistics Publication**

The United Kingdom Statistics Authority has designated these statistics as National Statistics, in accordance with the Statistics and Registration Service Act 2007 and signifying compliance with the Code of Practice for Official Statistics.

Designation can be broadly interpreted to mean that the statistics:

- meet identified user needs;
- are well explained and readily accessible;
- are produced according to sound methods, and
- are managed impartially and objectively in the public interest.

Once statistics have been designated as National Statistics it is a statutory requirement that the Code of Practice shall continue to be observed.



**e. Equivalent statistics from the Welsh Assembly Government, Scottish Government and the Office for National Statistics (ONS)**

	<b>Welsh Assembly Government (WG)</b>	<b>Scottish Government (SG)</b>	<b>Office for National Statistics (ONS)</b>
Description	1. Annual SFR statistics produced in a method analogous to the DfE annual SFR.	1. Statistics based on the Annual Population Survey (APS).	Monthly Labour Force Survey (LFS) statistics for young people not in full-time education and not in employment -Table 14 from the Labour Market Statistics bulletin.
	2. Statistics based on the Annual Population Survey (APS). Definition of NEET corresponds to that used in the DfE NEET Quarterly Brief	2. Annual school leaver statistics	
	3. Pupil destinations based on Careers Wales Survey.	3. Combination of DWP benefits data and school leaver destinations	
Uses	1. Regarded as the definitive measure of headline NEET estimates in Wales.	1. National estimates of NEET.	Part of wider labour market statistics; rolling 3-month average both seasonally-adjusted and not seasonally-adjusted; roughly equivalent to NEET but will include some young people in part-time education.
	2. Timely data; regional or single-age estimates based on averaging 3 years of data.	2. Proportion of young people in 'positive destinations'. The complement is roughly equivalent to NEET, but will include some young people in part-time education.	
	3. Local area estimates of NEET.	3. Local area estimates of NEET.	
Geographical Coverage	Wales	Scotland	United Kingdom (UK)
Age coverage	Academic age 16-18, 19-24 (SFR); academic age 16-18, 19-24 (APS); interviews in October following Year 11 (Careers Wales)	Actual age 16-19.	Actual age 16-17 and 18-24.
Published source	<a href="#">1. Welsh Government   Participation of Young People in Education and the Labour Market, 2010 and 2011 (provisional)</a>	<a href="#">1. Local Area Labour Markets in Scotland: Statistics from the Annual Population Survey 2011</a>	<a href="#">Labour Market Statistics - February 2013</a>
	<a href="#">2. Young People Not in Education, Employment or Training (NEET), Year to 30 Sept 2012</a>	<a href="#">2. Summary statistics for attainment, leaver destinations and healthy living, No. 2: 2012 Edition</a>	
	<a href="#">3. Pupil Destinations from Schools in Wales, 2011</a>	<a href="#">3. More Choices More Chances</a>	

### 3. Tables

**Table 1: Not in Employment, Education, or Training (NEET): England**

		<i>Numbers</i>						
a. NEET Participation SFR series	16 year olds	17 year olds	18 year olds	16-17 year olds	16-18 year olds	16-24 year olds	18-24 year olds	19-24 year olds
End 1999	40,600	42,500	62,400	83,100	145,500			
End 2000	40,700	44,200	71,300	84,800	156,100			
End 2001	46,700	55,500	73,600	102,100	175,800			
End 2002	47,300	57,300	75,600	104,600	180,200			
End 2003	44,600	47,200	79,700	91,800	171,500			
End 2004	45,400	53,500	78,700	98,800	177,600			
End 2005	48,100	62,700	85,500	110,800	196,300			
End 2006	44,700	58,200	90,400	103,000	193,300			
End 2007	41,100	58,900	91,400	100,000	191,500			
End 2008	38,800	62,300	110,500	101,100	211,600			
End 2009	36,000	52,500	114,800	88,500	203,200			
End 2010	33,600	54,100	95,000	87,700	182,800			
End 2011	35,100	56,300	106,200	91,400	197,600			
<i>Source: Labour Force Survey and Admin Data</i>		<i>Period: End 1999 to End 2011</i>						
b. NEET Quarterly LFS series*	16 year olds	17 year olds	18 year olds	16-17 year olds	16-18 year olds	16-24 year olds	18-24 year olds	19-24 year olds
Q4 2007	45,000	59,000	88,000	104,000	192,000	783,000	679,000	591,000
Q1 2008	42,000	63,000	89,000	104,000	193,000	811,000	707,000	618,000
Q2 2008	45,000	65,000	99,000	110,000	209,000	840,000	730,000	631,000
Q3 2008	53,000	100,000	102,000	153,000	256,000	971,000	818,000	716,000
Q4 2008	47,000	55,000	104,000	102,000	206,000	853,000	751,000	647,000
Q1 2009	42,000	66,000	112,000	108,000	220,000	929,000	821,000	709,000
Q2 2009	52,000	74,000	109,000	125,000	234,000	954,000	829,000	719,000
Q3 2009	56,000	93,000	113,000	150,000	262,000	1,073,000	923,000	811,000
Q4 2009	34,000	49,000	94,000	84,000	178,000	893,000	810,000	716,000
Q1 2010	31,000	59,000	104,000	91,000	195,000	925,000	834,000	729,000
Q2 2010	30,000	68,000	99,000	98,000	197,000	868,000	770,000	671,000
Q3 2010	42,000	100,000	124,000	141,000	265,000	1,022,000	880,000	756,000
Q4 2010	32,000	41,000	90,000	73,000	163,000	937,000	864,000	774,000
Q1 2011	32,000	50,000	77,000	82,000	159,000	925,000	843,000	765,000
Q2 2011	40,000	54,000	91,000	95,000	186,000	979,000	884,000	793,000
Q3 2011	55,000	95,000	117,000	150,000	267,000	1,163,000	1,013,000	896,000
Q4 2011	36,000	49,000	92,000	85,000	177,000	957,000	872,000	780,000
Q1 2012	37,000	56,000	88,000	93,000	181,000	949,000	856,000	768,000
Q2 2012	35,000	59,000	97,000	93,000	191,000	968,000	875,000	778,000
Q3 2012	37,000	77,000	92,000	115,000	206,000	1,027,000	912,000	821,000
Q4 2012	28,000	33,000	92,000	61,000	153,000	893,000	831,000	739,000
<i>Source: Labour Force Survey</i>		<i>Period: Q4 2007 to Q4 2012 time series</i>						
<i>*Note: the Labour Force Survey has not been reweighted to reflect the Census 2011 population so the numbers should be used with caution</i>								
c. Regional NEET	16 year olds	17 year olds	18 year olds	16-17 year olds	16-18 year olds	16-24 year olds	18-24 year olds	19-24 year olds
South East								
London								
East of England								
South West								
West Midlands								
East Midlands								
Yorks & Humber								
North West								
North East								
<i>Source: Client Caseload Information System</i>		<i>Period: Nov 2011 - Jan 2012 average</i>						

**Table 2: Not in Education and Training (NET): England**

		<i>Numbers</i>							
<b>d. NET Participation SFR series</b>		<b>16 year olds</b>	<b>17 year olds</b>	<b>18 year olds</b>	<b>16-17 year olds</b>	<b>16-18 year olds</b>	<b>16-24 year olds</b>	<b>18-24 year olds</b>	<b>19-24 year olds</b>
End 1999		77,500	111,600	226,200	189,200	415,400			
End 2000		82,700	116,300	222,400	198,900	421,300			
End 2001		88,300	131,500	235,200	219,800	455,100			
End 2002		80,100	135,200	242,300	215,300	457,600			
End 2003		75,700	125,700	251,200	201,500	452,700			
End 2004		74,500	124,200	245,500	198,700	444,100			
End 2005		68,300	122,300	241,000	190,500	431,500			
End 2006		67,100	117,400	250,200	184,600	434,800			
End 2007		66,700	116,000	245,600	182,700	428,300			
End 2008		52,800	114,000	253,000	166,800	419,800			
End 2009		44,800	87,500	247,200	132,200	379,400			
End 2010		42,900	81,600	230,300	124,500	354,700			
End 2011		42,000	80,900	213,500	122,900	336,400			
<i>Source: Labour Force Survey and Admin Data</i>		<i>Period: End 1999 to End 2011</i>							
<b>e. NET Quarterly LFS series*</b>		<b>16 year olds</b>	<b>17 year olds</b>	<b>18 year olds</b>	<b>16-17 year olds</b>	<b>16-18 year olds</b>	<b>16-24 year olds</b>	<b>18-24 year olds</b>	<b>19-24 year olds</b>
Q4 2007		70,000	117,000	236,000	187,000	424,000	2,797,000	2,610,000	2,374,000
Q1 2008		71,000	121,000	240,000	192,000	432,000	2,796,000	2,604,000	2,364,000
Q2 2008		77,000	141,000	262,000	218,000	480,000	2,920,000	2,702,000	2,440,000
Q3 2008		87,000	216,000	291,000	303,000	594,000	3,230,000	2,927,000	2,635,000
Q4 2008		62,000	102,000	246,000	164,000	410,000	2,807,000	2,643,000	2,397,000
Q1 2009		59,000	120,000	247,000	179,000	427,000	2,822,000	2,643,000	2,395,000
Q2 2009		71,000	135,000	259,000	206,000	466,000	2,884,000	2,678,000	2,418,000
Q3 2009		79,000	173,000	281,000	252,000	534,000	3,116,000	2,864,000	2,583,000
Q4 2009		42,000	82,000	209,000	125,000	333,000	2,719,000	2,595,000	2,386,000
Q1 2010		39,000	99,000	218,000	138,000	356,000	2,740,000	2,601,000	2,384,000
Q2 2010		41,000	109,000	220,000	150,000	370,000	2,753,000	2,603,000	2,383,000
Q3 2010		57,000	180,000	263,000	237,000	500,000	3,117,000	2,880,000	2,617,000
Q4 2010		40,000	62,000	202,000	102,000	304,000	2,780,000	2,679,000	2,476,000
Q1 2011		42,000	74,000	202,000	116,000	318,000	2,774,000	2,658,000	2,456,000
Q2 2011		53,000	98,000	215,000	151,000	366,000	2,972,000	2,821,000	2,606,000
Q3 2011		74,000	149,000	224,000	223,000	447,000	3,151,000	2,929,000	2,705,000
Q4 2011		44,000	72,000	178,000	116,000	294,000	2,729,000	2,613,000	2,435,000
Q1 2012		44,000	79,000	183,000	123,000	306,000	2,726,000	2,603,000	2,420,000
Q2 2012		50,000	94,000	208,000	144,000	352,000	2,913,000	2,769,000	2,561,000
Q3 2012		58,000	127,000	220,000	185,000	405,000	3,070,000	2,885,000	2,665,000
Q4 2012		36,000	55,000	189,000	91,000	280,000	2,739,000	2,648,000	2,459,000
<i>Source: Labour Force Survey</i>		<i>Period: Q4 2007 to Q4 2012 time series</i>							
<b>*Note: the Labour Force Survey has not been reweighted to reflect the Census 2011 population so the numbers should be used with caution</b>									

**Table 3: Not in Employment, Education, or Training (NEET): England**

<i>Percentage</i>								
<b>a. NEET Participation SFR series</b>	<b>16 year olds</b>	<b>17 year olds</b>	<b>18 year olds</b>	<b>16-17 year olds</b>	<b>16-18 year olds</b>	<b>16-24 year olds</b>	<b>18-24 year olds</b>	<b>19-24 year olds</b>
End 1999	6.8%	7.2%	10.4%	7.0%	8.1%			
End 2000	6.7%	7.4%	12.2%	7.0%	8.7%			
End 2001	7.4%	9.1%	12.2%	8.2%	9.5%			
End 2002	7.6%	9.0%	12.2%	8.3%	9.6%			
End 2003	7.0%	7.5%	12.4%	7.2%	9.0%			
End 2004	6.9%	8.3%	12.3%	7.6%	9.2%			
End 2005	7.4%	9.5%	13.2%	8.5%	10.0%			
End 2006	6.7%	8.9%	13.5%	7.8%	9.7%			
End 2007	6.1%	8.8%	13.8%	7.4%	9.5%			
End 2008	5.8%	9.1%	16.2%	7.5%	10.4%			
End 2009	5.5%	7.8%	16.5%	6.7%	10.0%			
End 2010	5.1%	8.2%	13.8%	6.6%	9.1%			
End 2011	5.4%	8.4%	15.8%	7.0%	9.9%			
<i>Source: Labour Force Survey and Admin Data</i>			<i>Period: End 1999 to End 2011</i>					
<b>b. NEET Quarterly LFS series*</b>	<b>16 year olds</b>	<b>17 year olds</b>	<b>18 year olds</b>	<b>16-17 year olds</b>	<b>16-18 year olds</b>	<b>16-24 year olds</b>	<b>18-24 year olds</b>	<b>19-24 year olds</b>
Q4 2007	6.9%	9.0%	13.7%	8.0%	9.9%	13.2%	14.6%	14.8%
Q1 2008	6.3%	9.6%	14.0%	8.0%	9.9%	13.6%	15.2%	15.4%
Q2 2008	7.0%	9.7%	15.1%	8.4%	10.6%	14.0%	15.5%	15.6%
Q3 2008	8.5%	14.8%	15.5%	11.8%	13.0%	16.2%	17.4%	17.7%
Q4 2008	7.4%	8.3%	15.4%	7.9%	10.5%	14.2%	15.9%	16.0%
Q1 2009	6.5%	10.0%	17.1%	8.3%	11.2%	15.5%	17.6%	17.6%
Q2 2009	8.0%	11.2%	16.5%	9.6%	11.9%	15.9%	17.6%	17.8%
Q3 2009	8.8%	14.6%	16.7%	11.7%	13.4%	18.0%	19.7%	20.2%
Q4 2009	5.6%	7.4%	14.8%	6.5%	9.3%	14.9%	17.1%	17.5%
Q1 2010	5.0%	8.8%	16.6%	7.0%	10.1%	15.3%	17.6%	17.8%
Q2 2010	5.0%	10.2%	15.0%	7.7%	10.2%	14.4%	16.2%	16.4%
Q3 2010	6.7%	14.9%	19.5%	11.0%	13.8%	17.1%	18.7%	18.6%
Q4 2010	5.0%	6.6%	13.9%	5.8%	8.6%	15.6%	18.2%	18.8%
Q1 2011	5.0%	8.0%	12.0%	6.5%	8.3%	15.3%	17.7%	18.6%
Q2 2011	6.4%	8.8%	14.3%	7.6%	9.8%	16.2%	18.4%	19.1%
Q3 2011	8.7%	15.1%	18.1%	11.9%	14.0%	19.2%	21.1%	21.5%
Q4 2011	6.0%	7.8%	14.9%	6.9%	9.6%	15.9%	18.2%	18.7%
Q1 2012	6.1%	8.9%	14.1%	7.5%	9.7%	15.8%	17.9%	18.5%
Q2 2012	5.6%	9.6%	15.5%	7.6%	10.3%	16.0%	18.1%	18.5%
Q3 2012	6.2%	12.5%	14.9%	9.4%	11.3%	17.0%	19.0%	19.6%
Q4 2012	4.8%	5.4%	14.4%	5.1%	8.4%	15.0%	17.5%	17.9%
<i>Source: Labour Force Survey</i>			<i>Period: Q4 2007 to Q4 2012 time series</i>					
<i>*Note: the Labour Force Survey has not been reweighted to reflect the Census 2011 population</i>								
<b>c. Regional NEET</b>	<b>16 year olds</b>	<b>17 year olds</b>	<b>18 year olds</b>	<b>16-17 year olds</b>	<b>16-18 year olds</b>	<b>16-24 year olds</b>	<b>18-24 year olds</b>	<b>19-24 year olds</b>
South East	3.7%	5.8%	7.9%	4.8%	5.8%			
London	2.5%	4.5%	6.3%	3.6%	4.5%			
East of England	3.8%	6.0%	8.4%	4.9%	6.0%			
South West	3.6%	5.7%	7.9%	4.7%	5.7%			
West Midlands	3.9%	6.0%	8.8%	5.0%	6.2%			
East Midlands	3.6%	5.4%	7.7%	4.5%	5.4%			
Yorks & Humber	4.9%	7.3%	9.2%	6.1%	7.1%			
North West	4.5%	7.1%	9.8%	5.8%	7.1%			
North East	5.2%	8.7%	12.6%	6.9%	8.8%			
<i>Source: Client Caseload Information System</i>			<i>Period: Nov 2011 - Jan 2012 average</i>					

**Table 4: Not in Education and Training (NET): England**

		<i>Percentage</i>							
d. NET Participation SFR series		16 year olds	17 year olds	18 year olds	16-17 year olds	16-18 year olds	16-24 year olds	18-24 year olds	19-24 year olds
End 1999		12.9%	18.9%	37.9%	15.9%	23.3%			
End 2000		13.6%	19.4%	38.0%	16.5%	23.5%			
End 2001		14.0%	21.5%	39.1%	17.7%	24.7%			
End 2002		12.8%	21.3%	39.2%	17.1%	24.3%			
End 2003		11.9%	19.9%	39.0%	15.9%	23.7%			
End 2004		11.4%	19.4%	38.4%	15.3%	22.9%			
End 2005		10.5%	18.5%	37.1%	14.6%	22.0%			
End 2006		10.1%	17.9%	37.4%	14.0%	21.9%			
End 2007		9.9%	17.3%	37.0%	13.6%	21.3%			
End 2008		7.9%	16.7%	37.2%	12.3%	20.6%			
End 2009		6.8%	12.9%	35.6%	9.9%	18.7%			
End 2010		6.5%	12.3%	33.5%	9.4%	17.7%			
End 2011		6.5%	12.1%	31.7%	9.4%	16.9%			
<i>Source: Labour Force Survey and Admin Data</i>		<i>Period: End 1999 to End 2011</i>							
e. NET Quarterly LFS series*		16 year olds	17 year olds	18 year olds	16-17 year olds	16-18 year olds	16-24 year olds	18-24 year olds	19-24 year olds
Q4 2007		10.8%	17.9%	36.7%	14.3%	21.7%	47.0%	56.1%	59.3%
Q1 2008		10.7%	18.7%	37.6%	14.7%	22.2%	47.0%	56.1%	59.0%
Q2 2008		12.0%	21.1%	40.1%	16.6%	24.4%	48.6%	57.5%	60.4%
Q3 2008		13.9%	32.0%	44.1%	23.3%	30.3%	53.8%	62.2%	65.2%
Q4 2008		9.7%	15.4%	36.6%	12.6%	20.8%	46.7%	56.1%	59.4%
Q1 2009		9.2%	18.2%	37.9%	13.7%	21.8%	47.2%	56.5%	59.5%
Q2 2009		11.1%	20.4%	39.2%	15.8%	23.7%	48.1%	57.0%	59.9%
Q3 2009		12.3%	27.1%	41.8%	19.7%	27.4%	52.2%	61.0%	64.3%
Q4 2009		6.8%	12.4%	32.9%	9.7%	17.4%	45.3%	55.0%	58.4%
Q1 2010		6.4%	14.6%	34.7%	10.7%	18.5%	45.5%	55.0%	58.1%
Q2 2010		6.7%	16.2%	33.5%	11.7%	19.1%	45.7%	54.9%	58.4%
Q3 2010		9.2%	26.8%	41.4%	18.4%	26.0%	52.1%	61.3%	64.4%
Q4 2010		6.3%	10.1%	31.3%	8.1%	16.0%	46.3%	56.3%	60.2%
Q1 2011		6.5%	11.9%	31.4%	9.1%	16.6%	46.0%	55.7%	59.5%
Q2 2011		8.3%	15.9%	33.7%	12.0%	19.4%	49.1%	58.8%	62.7%
Q3 2011		11.7%	23.6%	34.7%	17.7%	23.4%	51.9%	60.9%	65.0%
Q4 2011		7.3%	11.5%	28.6%	9.4%	15.9%	45.3%	54.6%	58.4%
Q1 2012		7.2%	12.6%	29.4%	9.9%	16.4%	45.3%	54.4%	58.2%
Q2 2012		8.1%	15.5%	33.0%	11.8%	19.0%	48.1%	57.2%	60.9%
Q3 2012		9.7%	20.5%	35.8%	15.2%	22.1%	50.9%	60.0%	63.5%
Q4 2012		6.1%	9.0%	29.6%	7.6%	15.2%	46.0%	55.6%	59.6%
<i>Source: Labour Force Survey</i>		<i>Period: Q4 2007 to Q4 2012 time series</i>							
<i>*Note: the Labour Force Survey has not been reweighted to reflect the Census 2011 population</i>									

Additional tables are published with this brief – these show a regional breakdown of the quarterly NEET statistics for 16-24, 18-24 and 19-24 year olds, and time-series data from 2001. Please see the [DfE Q4 2012 NEET Quarterly Brief](#) web-page.