

SDR 215/2012

13 December 2012

## Student Support Applications for Higher Education, Wales – update at end of November 2012

This monthly Statistical First Release presents information on the number of Higher Education student support applications and Tuition Fee Loan (TFL) applications received from, and Tuition Fee Grants (TFG) awarded to, Welsh domiciled students (wherever they study) and EU domiciled students studying in Wales in academic year 2012/13, as at 25 November 2012. The release is based on data provided by the Student Loans Company and is correct as at 26 November 2012 (see Notes for further details).

Student support is money to help students with living and learning costs while they are studying in higher education. Since 2006/07, students have been able to apply for non-means tested loans to cover tuition fee costs.

From 1 September 2012, students who normally live in Wales and are entering an UK Higher Education Institution (HEI) or college charging variable tuition fees (of up to a maximum of £9,000) will be eligible to receive a Tuition Fee Grant (TFG) of up to £5,535. EU students will be eligible for this TFG if they are studying in Wales. Welsh domiciled students and EU domiciled students studying in Wales who started their course between September 2006 and August 2010, are eligible for a non-means tested TFG of up to £2,085 (2012/13 level). The grants are not means-tested and are non-repayable. Welsh domiciled students and EU students commencing their studies between 1 September 2010 and 31 August 2012 are not eligible for a TFG (except those who deferred entry to higher education).

### Key results

These data are the eighth monthly data concerning applications for 2012/13 and the new fee arrangements. From being 12 per cent lower in April than the previous academic year, applications are now higher than the same period last year. As at 25 November 2012, student support applications were up by 2 per cent on 2011/12 (Chart 1, Table 1). Changes in timing of the application process may have affected percentage changes seen in the cycle, but comparisons with last year seem to have settled. Table 1 illustrates how the comparison with 2011/12 has changed over the cycle.

- In the 2012/13 academic year to date, a total of 56,900 applications had been received for student support (Chart 1).
- 50,075 applications had been received for TFLs, up 3 per cent on the 2011/12 figure (Chart 2).
- To date, 22,770 students have been awarded a TFG. Of these, 20,160 (89 per cent) students had been awarded the new TFG, where they are eligible to receive up to £5,535.

**Statistician:** Michelle Morgan

**Tel:** 029 2082 3895

**E-mail:** post16ed.stats@wales.gsi.gov.uk

**Next update:** 17 January 2013

**Twitter:** [www.twitter.com/statisticswales](http://www.twitter.com/statisticswales) | [www.twitter.com/ystadegaucymru](http://www.twitter.com/ystadegaucymru)

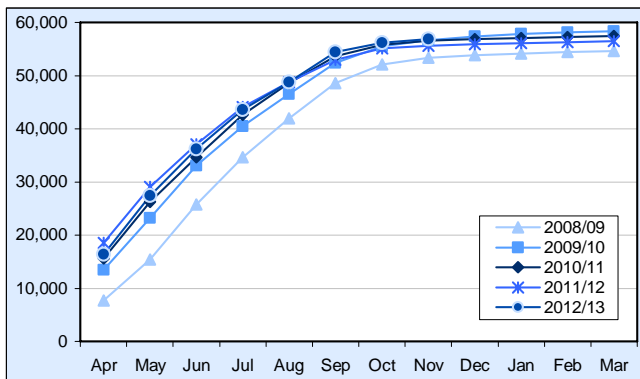
Cyhoeddwyd gan Y Gwasanaethau Gwybodaeth a Dadansoddi  
 Llywodraeth Cymru, Parc Cathays, Caerdydd, CF10 3NQ  
 Ffôn – Swyddfa'r Wasg **029 2089 8099**, Ymholiadau Cyhoeddus **029 2082 3332**  
**[www.cymru.gov.uk/ystadegau](http://www.cymru.gov.uk/ystadegau)**

Issued by Knowledge and Analytical Services  
 Welsh Government, Cathays Park, Cardiff, CF10 3NQ  
 Telephone – Press Office **029 2089 8099**, Public Enquiries **029 2082 5050**  
**[www.wales.gov.uk/statistics](http://www.wales.gov.uk/statistics)**

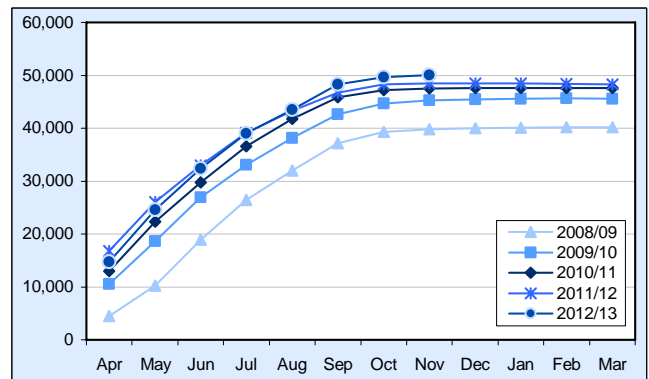



Llywodraeth Cymru  
 Welsh Government

**Chart 1: Cumulative number of all student support applications received, by month and year of study**



**Chart 2: Cumulative number of all TFL applications received, by month and year of study**



Associated figures can be seen here: 

**Table 1: Percentage change seen between each month's update of the number of student support applications in academic year 2012/13 and the same period in 2011/12**

	Apr	May	Jun	Jul	Aug	Sep	Oct	Nov
Percentage change	-11.7%	-5.6%	-2.4%	-1.0%	0.0%	2.8%	2.0%	2.3%

## **Annex 1: Notes**

### **1. Policy/Operational Context**

Student support is money to help students with tuition fee and living costs while they are studying in higher education. In 2006/07, loans to cover the cost of tuition fees (TFLs) became available to all Welsh students and those EU domiciled students studying in Wales. Tuition fee payments can be deferred until students have left higher education and are earning over £15,000 (or £21,000 for those entering higher education from 2012/13).

New arrangements have been put in place for the 2012/13 academic year following the introduction of higher variable tuition fees of up to £9,000. From 1 September 2012, students who normally live in Wales and are entering an UK Higher Education Institution (HEI) or college charging variable tuition fees (of up to a maximum of £9,000) will be eligible to receive a Tuition Fee Grant (TFG) of up to £5,535. Welsh domiciled students and EU domiciled students studying in Wales who started their course between September 2006 and August 2010, are eligible for a non-means tested TFG of up to £2,085 (2012/13 level). The grants are not means-tested and are non-repayable. Students commencing their studies between 1 September 2010 and 31 August 2012 are not eligible for a TFG.

These monthly updates may provide an early indication of student numbers compared with the previous year, though changes in the application process, such as timing, can affect comparisons.

### **2. Rounding strategy**

Figures in this release have been rounded to the nearest 5.

### **3. Data source**

Student support applications and payments are administered by the Student Loans Company (SLC). Relevant data are entered by SLC staff onto an administrative database, and are also stored in a management information data warehouse for the purpose of management reporting, operational performance reporting, audit of processes, statistics, future policy planning and forecasting. Processes and systems which enable customer and application assessment data to be held electronically are subject to periodic audit and integrity checks. Management Information extracted from SLC systems are subject to quality assurances prior to distribution. Due to the way data is extracted from SLC's data warehouse, figures are usually reflective of the position as at the last Sunday of the month (for April 2011, due to an administrative issue, this was not possible and the effective date was therefore 1 May 2011), rather than the last day.

With regard to student support applications and TFL applications received, the following workstages (as defined by SLC) are included: eligibility incomplete; entitlement incomplete; pending LEA manual assessment; awaiting validation; awaiting LEA approval; approved; held; approved - awaiting signature.

With regard to TFGs, figures are for "awarded grants" and all will not necessarily be paid. The following workstages (as defined by SLC) are included: eligibility incomplete; entitlement incomplete; pending LEA manual assessment; awaiting validation; awaiting LEA approval; approved; held; approved - awaiting signature.

### **4. Key Quality Information**

#### **4.1 Relevance**

The statistics are used both within and outside the Welsh Government to monitor educational trends and as a baseline for further analysis of the underlying data. Some of the key users are:

- Ministers and the Members Research Service in the National Assembly for Wales;
- Officials in the Welsh Government and other government departments;
- Students, researchers, academics and universities;
- Individual citizens, private companies, and the media.

These statistics are used in a variety of ways. Some examples of these are:

- advice to Ministers and officials on the performance and efficiency of the student finance application process, and application trends compared with previous years;
- monitoring and forecasting the cost of student finance;
- to inform and evaluate the education policy-making process in Wales.

## 4.2 Accuracy

Statisticians within the Welsh Government review the data and query any anomalies with the Student Loans Company before tables are published. The updated monthly figures for the current academic year are correct at the time of publication.

In August 2011, administrative errors were discovered in the 2007/08 Academic Year data in StatsWales table 003821. As a result, all data for May and June 2007/08 were revised on 11 August 2011.

## 4.3 Timeliness and Punctuality

This is the eighth monthly publication for academic year 2012/13. Monthly updates during a given academic year are published as soon as possible, a few weeks following the end of a given month, and according to a planned and pre-announced series of publication dates.

Applications for academic year 2011/12 began on 21 February 2011, whereas applications for academic year 2012/13 began on the 21 March 2012. The deadline for applications from new and returning students was brought back from 15 April in 2011 to 4 May 2012 and 1 June 2012 respectively. Final 2011/12 data was published on the 29 November 2012. Final data for 2012/13 will be published in November 2013.

## 4.4 Accessibility and Clarity

This statistical release is published on the Statistics section of the Welsh Government website. It is accompanied by more detailed tables on StatsWales, a free to use service that allows visitors to view, manipulate, create and download data.

## 4.5 Comparability

New system Welsh and EU domiciled students studying in Wales (i.e. those entering the new support arrangements introduced in September 2006) were subject to tuition fees of £1,200, while Welsh domiciled students studying in England were subject to variable tuition fees of up to £3,000. In 2007/08, variable tuition fees (up to £3,465 in 2012/13) were introduced in Wales, affecting all students who started their courses from 2006/07 onwards. In 2012/13, increased tuition fees of up to £9,000 and a new Tuition Fee Grant of up to £5,535 are introduced, affecting all students starting their course from 2012/13.

2010/11 TFG data includes some applicants who have indicated that they are on an end-on course, or have been on a Gap year. 2011/12 TFG data includes some applicants who have indicated that they are on an end-on course. A course is an end-on course if:

- the student completed a full-time course last academic year and is starting a new one this academic year; and
- the student is doing either of the following things:
  - starting to study for a degree having completed a lower level HE qualification (eg foundation degree or HND); or
  - converting an ordinary degree to an Honours degree.

## 5. Further Information

Updates providing the number of student support applications during 2012/13 will be published monthly, and will be found on the [Statistics for Wales](#) website.

Comparable monthly data for all academic years can be found in the StatsWales table on [Cumulative number of applications for student finance by academic year and type of support](#).

Further information about student support can be found at [www.StudentFinanceWales.co.uk](http://www.StudentFinanceWales.co.uk).

## Related Articles

Statistical Releases on other strands of student support in Wales are available via the following link:

<http://wales.gov.uk/topics/statistics/theme/post16ed/student-finance/?lang=en>

The latest annual Statistical Release on Student Support for Higher Education in Wales, published by the Student Loans Company, is available via the following link:

<http://www.slc.co.uk/statistics/national-statistics.aspx>