

Kaishev, V. (2010). Stochastic processes induced by Dirichlet (B-) splines: modelling multivariate asset price dynamics (Report No. Actuarial Research Paper No. 195). London, UK: Faculty of Actuarial Science & Insurance, City University London.



**CITY UNIVERSITY
LONDON**

[City Research Online](#)

Original citation: Kaishev, V. (2010). Stochastic processes induced by Dirichlet (B-) splines: modelling multivariate asset price dynamics (Report No. Actuarial Research Paper No. 195). London, UK: Faculty of Actuarial Science & Insurance, City University London.

Permanent City Research Online URL: <http://openaccess.city.ac.uk/2326/>

Copyright & reuse

City University London has developed City Research Online so that its users may access the research outputs of City University London's staff. Copyright © and Moral Rights for this paper are retained by the individual author(s) and/ or other copyright holders. All material in City Research Online is checked for eligibility for copyright before being made available in the live archive. URLs from City Research Online may be freely distributed and linked to from other web pages.

Versions of research

The version in City Research Online may differ from the final published version. Users are advised to check the Permanent City Research Online URL above for the status of the paper.

Enquiries

If you have any enquiries about any aspect of City Research Online, or if you wish to make contact with the author(s) of this paper, please email the team at publications@city.ac.uk.



Cass Business School
CITY UNIVERSITY LONDON

**Faculty of Actuarial
Science and Insurance**

**Actuarial Research Paper
No. 195**

**Stochastic processes induced by Dirichlet
(B-) splines: modelling multivariate asset
price dynamics**

Vladimir K. Kaishev

June 2010

ISBN 978-1-905752-28-7

Cass Business School
106 Bunhill Row
London EC1Y 8TZ
Tel +44 (0)20 7040 8470
www.cass.city.ac.uk

“Any opinions expressed in this paper are my/our own and not necessarily those of my/our employer or anyone else I/we have discussed them with. You must not copy this paper or quote it without my/our permission”.

Stochastic processes induced by Dirichlet (B-) splines: modelling multivariate asset price dynamics

by

Vladimir K. Kaishev

Cass Business School, City University, London, UK

Abstract

We consider a new class of processes, called LG processes, defined as linear combinations of independent gamma processes. Their distributional and path-wise properties are explored by following their relation to polynomial and Dirichlet (B-) splines. In particular, it is shown that the density of an LG process can be expressed in terms of Dirichlet (B-) splines, introduced independently by Ignatov and Kaishev (1987, 1988, and 1989) and Karlin et al. (1986). We further show that the well known variance-gamma (VG) process, introduced by Madan and Seneta (1990), and the Bilateral Gamma (BG) process, recently considered by Küchler and Tappe (2008) are special cases of an LG process. Following this LG interpretation, we derive new (alternative) expressions for the VG and BG densities and consider their numerical properties. The LG process has two sets of parameters, the B-spline knots and their multiplicities, and offers further flexibility in controlling the shape of the Levy density, compared to the VG and the BG processes. Such flexibility is often desirable in practice, which makes LG processes interesting for financial and insurance applications.

Multivariate LG processes are also introduced and their relation to multivariate Dirichlet and simplex splines is established. Expressions for their joint density, the underlying LG-copula, the characteristic, moment and cumulant generating functions are given. A method for simulating LG sample paths is also proposed, based on the Dirichlet bridge sampling of Gamma processes, due to Kaishev and Dimitrova (2009). A method of moments for estimation of the LG parameters is also developed. Multivariate LG processes are shown to provide a competitive alternative in modelling dependence, compared to the multivariate asymmetric VG process considered by Cont and Tankov (2004) and Luciano and Schoutens (2006), and to its generalization by Luciano and Semeraro (2007) and Semeraro (2008). Application of multivariate LG processes in modelling the joint dynamics of multiple exchange rates is also considered.

Keywords: LG process; (multivariate) variance gamma process; bilateral gamma process; Dirichlet spline; B-spline; simplex spline; Dirichlet bridge sampling; cumulants; FX modelling.

1 Introduction

An important strand of literature on financial modelling in recent years is devoted to developing more realistic stochastic models incorporating appropriate Lévy processes as drivers of the price dynamics of financial assets. Examples of such processes are the Variance Gamma process introduced by Madan and Seneta (1990) (see also Madan et al. 1998) and the so called Bilateral Gamma (BG) process considered recently by Küchler and Tappe (2008). The three parameter VG process of Madan et al. (1998) is constructed by randomly changing the time in a Brownian motion with certain drift and volatility parameters, following a Gamma process with unit mean rate and certain variance rate parameter. The BG process is a generalization of the VG process and its increments have a four parameter Bilateral Gamma distribution, which represents two Gamma distributions, one for the positive and one for the negative half-lines, adjoined together at the origin. Both VG and BG processes are pure jump, infinite activity, finite-variation, Lévy processes, that inherit these properties from the Gamma processes underlying their construction. For an excellent account on properties of Gamma processes which play an important role throughout this paper, we refer to Yor (2007).

The exponential VG process has proved a successful alternative to Geometric Brownian motion in a number of applications, for example in option pricing (see Kaishev and Dimitrova 2009 and the references therein) and in credit risk modelling (see Schoutens and Cariboni 2009). The ability of the VG process to capture both upward and downward jumps as well as very small movements (jitters) in stock prices have been highlighted by Stein et al. (2007) who give an extensive list of further references on the VG model and its applications.

Many real life financial applications require modelling the joint dynamics of multiple, possibly dependent asset price processes. A typical example would be the necessity to model the joint movement of foreign currencies exchange rates. In such cases, developing models involving appropriate multivariate Lévy processes, capable of capturing different dependence patterns is of utmost importance. In order to meet such demands, recently, attempts to extend the VG model to more than one dimension have been undertaken in several directions. For example, Luciano and Schoutens (2006) considered a multivariate VG model, in which dependence is achieved by applying a random time change according to a common Gamma process, in the corresponding, differently parameterized, univariate Brownian motions. The level of dependence in this construction is controlled only through the Gamma variance rate parameter which imposes some limitations on its flexibility (see the numerical illustration in Section 4). Further generalizations of this construction, due to Luciano and Semeraro (2007) and Semeraro (2008), allow for a decomposition of the time change in a common and idiosyncratic parts.

The univariate BG process with its four parameters offers somewhat extended flexibility, compared to the univariate VG. However, to the best of our knowledge, no multivariate versions of the BG process have been considered in the literature.

In this paper we propose a new class of Lévy processes defined as linear combinations of independent Gamma processes. In what follows, it will be convenient to refer to such linear combinations as *LG processes*. It is directly verified (see Section 2) that both the Variance Gamma (VG) process and the Bilateral Gamma process are special cases of an LG process represented as particular linear combinations of two Gamma processes.

Our aim in this paper is to introduce univariate and multivariate LG processes, explore their properties and illustrate how they can be applied in modelling the joint behavior of empirical asset price processes. As the VG and the BG, LG processes also preserve some of the nice features of the Gamma processes used for their construction. They are pure jump Lévy processes of finite variation which may jump infinitely many times on a finite time interval. We show that LG processes are intrinsically related to the so called Dirichlet splines and polynomial B-splines, and possess some of their interesting geometric properties. In particular, we give explicit expressions, in terms of multivariate Dirichlet (B-) splines, of the joint density of the LG distribution, generating multivariate LG processes. Dirichlet splines, which have been independently introduced by Karlin et al. (1986) and by Ignatov and Kaishev (1987, 1988, 1989) who call them *generalized B-splines*, are densities of linear transformations of Dirichlet random variables. When the shape parameters of the underlying Gamma processes are integer, the corresponding LG density is expressed in terms of multivariate simplex splines, introduced by De Boor (1976). We give also some new expressions, in terms of univariate Dirichlet (B-) splines, for the densities of the VG and BG distributions. The proposed approach allows for the uniform treatment of the wide class of LG processes in terms of multivariate Dirichlet (B-) splines for which methods of their efficient numerical evaluation exist (see Section 3).

The structure of the paper is as follows. In section 2, we introduce univariate LG processes, note their relation to the Variance Gamma and Bilateral Gamma processes, explore their distributional properties and give the Lévy triplet and martingale conditions, which characterize them. In section 3, we introduce the multivariate version of an LG process, establish expressions in terms of multivariate Dirichlet (B-) splines for the joint density of its underlying joint LG distribution, give its underlying LG copula, its characteristic, moment and cumulant generating functions. We also provide a method of moments, based on expressing them in terms of cumulants, for estimating the LG parameter. In Section 4 we illustrate how the multivariate LG processes are applied in modelling the dynamics of the joint movement of the exchange rates of a set of currencies. Section 5 provides conclusions and some further comments.

2 Linear combinations of Gamma (LG-) processes

Our aim here will be to consider a new class of stochastic processes, defined as linear combinations of independent Gamma processes and explore their distributional and path-wise properties.

For the purpose, denote by $G_i(t; \alpha_i, \lambda)$, $i = 0, \dots, n$ a collection of $n + 1$ independent Gamma processes, defined on a probability space $(\Omega, \mathcal{F}, \mathbb{P})$, with mean rate $\alpha_i/\lambda > 0$ and variance rate $\alpha_i/\lambda^2 > 0$, where $\alpha_i > 0$ and $\lambda > 0$, $i = 0, \dots, n$. For a fixed t , $t > 0$, the density of $G_i(t; \alpha_i, \lambda)$ is

$$f_{G_i}(x; \alpha_i, \lambda, t) = \frac{\lambda^{\alpha_i t}}{\Gamma(\alpha_i t)} x^{\alpha_i t - 1} e^{-\lambda x},$$

where $x > 0$. Let us recall that the Gamma process, $G_i(t; \alpha_i, \lambda)$, is a pure jump, finite variation process which jumps infinitely many times up to time t and has independent, gamma distributed increments. It plays a central role in contemporary financial modelling. For a detailed account on the properties of Gamma processes and their application in finance and insurance, we refer to Yor (2007), Fu (2007), Dufresne et al. (1991), Dickson and Waters (1993), Madan et al. (1998). We will use the gamma processes, $G_i(t; \alpha_i, \lambda)$, $i = 0, \dots, n$, as building blocks and define the process of interest in this paper, as follows

Definition 1. Given a set of real valued distinct parameters $\delta = \{\delta_0, \dots, \delta_n\}$, define the process $LG(t; \delta, \alpha, \lambda, n)$ as a linear combination of the independent gamma processes, $G_i(t; \alpha_i, \lambda)$, $i = 0, \dots, n$, i.e.,

$$LG(t; \delta, \alpha, \lambda, n) = \delta_0 G_0(t; \alpha_0, \lambda) + \dots + \delta_n G_n(t; \alpha_n, \lambda), \quad (1)$$

where $\alpha = \{\alpha_0, \dots, \alpha_n\}$. For the sake of brevity we call such linear combinations, *LG processes*.

In what follows we will sometimes abbreviate $LG(t; \delta, \alpha, \lambda, n)$, to $LG(t)$ and the two notations will be used interchangeably.

Let us note that the three parameter Variance Gamma process, introduced by Madan et al. (1998), is a special case of an LG process. To see this recall that the VG process, $VG(t; \theta, \sigma, \nu)$ is defined as

$$VG(t; \theta, \sigma, \nu) = B\left(G\left(t; \frac{1}{\nu}, \frac{1}{\nu}\right); \theta, \sigma\right),$$

where $B(t; \theta, \sigma)$ is a Brownian motion with drift $\theta \in \mathbb{R}$ and volatility $\sigma > 0$, and $G(t; \frac{1}{\nu}, \frac{1}{\nu})$ is a Gamma process with mean rate 1 and variance rate $\nu > 0$. It is not difficult to see that the VG process admits the alternative, LG representation

$$VG(t; \theta, \sigma, \nu) = \delta_0 G_0(t; \alpha_0, 1) + \delta_1 G_1(t; \alpha_1, 1), \quad (2)$$

where $\delta_0 = -\frac{\sqrt{\theta^2 + 2\sigma^2/\nu} - \theta}{2} \nu$, $\delta_1 = \frac{\sqrt{\theta^2 + 2\sigma^2/\nu} + \theta}{2} \nu$; $\alpha_0 = \alpha_1 = \frac{1}{\nu}$, which is a special case of an $LG(t; \delta, \alpha, \lambda, n)$ process with $\lambda = 1$ and $n = 1$.

Equality (2) follows from the fact that the characteristic function of the VG process (see Madan et al. 1998), can be expressed as

$$\begin{aligned}\phi_{VG(t)}(u) &= \left(\frac{1}{1 - i\theta v u + \frac{1}{2} \sigma^2 v u^2} \right)^{\frac{1}{v} t} \\ &= \left(\frac{1}{1 + i u |\delta_0|} \right)^{\alpha_0 t} \left(\frac{1}{1 - i u \delta_1} \right)^{\alpha_1 t} = \mathbb{E} \left[e^{i u \{ \delta_0 G_0(t; \alpha_0, 1) + \delta_1 G_1(t; \alpha_1, 1) \}} \right],\end{aligned}$$

where $|\delta_0|$ is the absolute value of δ_0 . Furthermore, a linear combination of say, p , VG processes is also a LG process, i.e.,

$$VG_1(t; \theta_0, \sigma_1, \nu_1) + \dots + VG_{p-1}(t; \theta_{p-1}, \sigma_{p-1}, \nu_{p-1}) = LG(t; \delta, \alpha, 1, 2p)$$

$$\begin{aligned}\text{where } \delta &= \{\delta_0, \dots, \delta_{2p-1}\}, \quad \alpha = \{\alpha_0, \dots, \alpha_{2p-1}\} \quad \text{and} \quad \delta_j = -\frac{\sqrt{\theta_j^2 + 2\sigma_j^2/\nu_j} - \theta_j}{2} \nu_j \\ j = 0, \dots, p-1, \quad \delta_j &= \frac{\sqrt{\theta_{j-p}^2 + 2\sigma_{j-p}^2/\nu_{j-p}} + \theta_{j-p}}{2} \nu_{j-p}, \quad j = p, \dots, 2p-1 \quad \text{and} \\ \alpha_j &= \alpha_{p+j} = 1/\nu_j, \quad j = 0, \dots, p-1.\end{aligned}$$

It can be shown that the *Bilateral Gamma* (BG) process, recently considered by Küchler and Tappe (2008), is also a special case of an LG process. The BG processes are associated with the bilateral gamma distribution, $\Gamma(\alpha^+, \lambda^+, \alpha^-, \lambda^-)$, with parameters $\alpha^+, \lambda^+, \alpha^-, \lambda^- > 0$, defined as the convolution

$$\Gamma(\alpha^+, \lambda^+, \alpha^-, \lambda^-) := \Gamma(\alpha^+, \lambda^+) * \Gamma(\alpha^-, -\lambda^-),$$

where $\Gamma(\alpha, \lambda)$ is a generalized Gamma distribution with parameters $\alpha > 0, \lambda \in \mathbb{R} \setminus \{0\}$. The density of $\Gamma(\alpha, \lambda)$ is given by

$$f_{BG}(x; \alpha, \lambda) = \frac{|\lambda|^\alpha}{\Gamma(\alpha)} |x|^{\alpha-1} e^{-|\lambda||x|} (\mathbb{1}_{\{\lambda>0\}} \mathbb{1}_{\{x>0\}} + \mathbb{1}_{\{\lambda<0\}} \mathbb{1}_{\{x<0\}}), \quad (3)$$

where $x \in \mathbb{R}$ and $\mathbb{1}_{\{\cdot\}}$ is the indicator function. As can be seen from (3), when $\lambda > 0$, this is the well-known Gamma distribution, concentrating mass on \mathbb{R}_+ , whereas, for $\lambda < 0$, the generalized Gamma distribution is simply a Gamma distribution on the negative half axis, \mathbb{R}_- . The corresponding bilateral gamma process, $BG(t; \alpha^+, \lambda^+, \alpha^-, \lambda^-)$ is a pure jump Lévy process, whose increments have bilateral gamma distribution and in particular, for fixed $t, t > 0$,

$$BG(t; \alpha^+, \lambda^+, \alpha^-, \lambda^-) \sim \Gamma(\alpha^+ t, \lambda^+, \alpha^- t, \lambda^-).$$

For further properties of the BG distribution and processes, and some applications in finance, we refer to Küchler and Tappe (2008).

It is directly verified that, the BG process is a four parameter generalization of the VG process and admits the following representation as an LG process

$$\text{BG}(t; \alpha^+, \lambda^+, \alpha^-, \lambda^-) = \delta_0 G_0(t; \alpha_0, 1) + \delta_1 G_1(t; \alpha_1, 1),$$

where $\delta_0 = -1/\lambda^-$; $\delta_1 = 1/\lambda^+$; $\alpha_0 = \alpha^-$, $\alpha_1 = \alpha^+$, $\lambda = 1$ and $n = 1$. As in the case of VG, linear combinations of BG processes are also LG processes, i.e.,

$$\text{BG}_1(t; \alpha_0^+, \lambda_0^+, \alpha_0^-, \lambda_0^-) + \dots + \text{BG}_p(t; \alpha_{p-1}^+, \lambda_{p-1}^+, \alpha_{p-1}^-, \lambda_{p-1}^-) = \text{LG}(t; \delta, \alpha, 1, 2p),$$

where $\delta = \{-1/\lambda_0^-, \dots, -1/\lambda_{p-1}^-, 1/\lambda_0^+, \dots, 1/\lambda_{p-1}^+\}$ and $\alpha = \{\alpha_0^-, \dots, \alpha_{p-1}^-, \alpha_0^+, \dots, \alpha_{p-1}^+\}$.

2.1 Distributional properties

From Definition 1, for fixed t , say $t = 1$, it is directly seen that the characteristic function, $\phi_{\text{LG}}(z) = \mathbb{E}[e^{iz \text{LG}(t)}]$, of a LG process is given by

$$\phi_{\text{LG}}(z) = \prod_{j=0}^n \left(\frac{\lambda}{\lambda - i \delta_j z} \right)^{\alpha_j}, \quad z \in \mathbb{R}.$$

The cumulant generating function, $\Psi(u) = \ln \mathbb{E}[e^{u \text{LG}(t)}]$, $u \in \mathbb{R}$ is

$$\Psi(u) = \sum_{j=0}^n \alpha_j \ln \frac{\lambda}{\lambda - \delta_j u},$$

where

$$\frac{\lambda}{\max_{j \in D_-} \{\delta_j\}} < u < \frac{\lambda}{\max_{j \in D_+} \{\delta_j\}},$$

$$D_- = \{i \in I : \text{sgn}(\delta_i) = -1\}, \quad D_+ = \{i \in I : \text{sgn}(\delta_i) = +1\}, \quad I = \{1, \dots, n\}.$$

The cumulants $\kappa_w = \Psi^{(w)}(0)$, where

$$\Psi^{(w)}(u) = (w-1)! \sum_{j=0}^n \alpha_j \delta_j^w (\lambda - \delta_j u)^{-w}, \quad w = 1, 2, \dots$$

are then obtained as

$$\kappa_w = (w-1)! \sum_{j=0}^n \frac{\alpha_j}{\lambda^w} \delta_j^w, \quad w = 1, 2, \dots \quad (4)$$

We can now use (4) and specify the mean, μ_{LG} , the variance, ν_{LG} , the Charliers skewness, χ_{LG} , and the kurtosis, τ_{LG} , of LG(t) as

$$\begin{aligned}\mathbb{E}[LG(t)] &= \mu_{LG} = \kappa_1 = \sum_{i \in D_+} \frac{\alpha_i \delta_i}{\lambda} - \sum_{i \in D_-} \frac{\alpha_i |\delta_i|}{\lambda}, \\ \text{Var}[LG(t)] &= \nu_{LG} = \kappa_2 = \sum_{i \in D_+} \frac{\alpha_i \delta_i^2}{\lambda^2} + \sum_{i \in D_-} \frac{\alpha_i |\delta_i|^2}{\lambda^2} \\ \chi_{LG} &= \kappa_3 / (\kappa_2)^{3/2} = \sum_{j=0}^n 2 \alpha_j \delta_j^3 \lambda^{-3} / \left(\sum_{j=0}^n \alpha_j \delta_j^2 \lambda^{-2} \right)^{3/2} \\ \tau_{LG} &= 3 + \kappa_4 / (\kappa_2)^2 = 3 + \sum_{j=0}^n 6 \alpha_j \delta_j^4 \lambda^{-4} / \left(\sum_{j=0}^n \alpha_j \delta_j^2 \lambda^{-2} \right)^2.\end{aligned}$$

Let us now give an expression for the density of $LG(t)$. For the purpose, we will need some notation and background results. Denote by

$$S_n = \left\{ \mathbf{x} = (x_1, \dots, x_n) \in \mathbb{R}^n : x_i \geq 0, \text{ for all } i, \sum_{i=1}^n x_i \leq 1 \right\},$$

the standard n -simplex and recall that the random vector $(\theta_0, \dots, \theta_n)$, has Dirichlet distribution $\mathfrak{D}(\alpha_0, \dots, \alpha_n)$ on S_n , with (real) parameters $\alpha_0 > 0, \dots, \alpha_n > 0$, i.e., $(\theta_0, \dots, \theta_n) \in \mathfrak{D}(\alpha_0, \dots, \alpha_n)$, if $\theta_0 = 1 - \theta_1 - \dots - \theta_n$ and the joint probability density of $\theta_1, \dots, \theta_n$ with respect to the Lebesgue measure is

$$f_{\theta_1, \dots, \theta_n}(\mathbf{x}) = \frac{\Gamma(\alpha_0 + \dots + \alpha_n)}{\prod_{i=0}^n \Gamma(\alpha_i)} \prod_{j=0}^n x_j^{\alpha_j - 1} \mathbb{1}_{\{\mathbf{x} \in S_n\}},$$

where $x_0 = 1 - x_1 - \dots - x_n$. We will use the shorter notation $(\theta_0, \dots, \theta_n) \in \mathfrak{D}(1)$ if $\alpha_j = 1, j = 0, \dots, n$. We will now establish the following property of a LG process, which will be used in the sequel.

Lemma 1. For a fixed $t, t > 0$, the process $LG(t; \delta, \alpha, \lambda, n)$, defined in (1), admits the representation

$$LG(t; \delta, \alpha, \lambda, n) = B(t) \Gamma(t), \tag{5}$$

where $\Gamma(t) = \sum_{i=0}^n G_i(t; \alpha_i, \lambda)$, $B(t) = \delta_0 \theta_0 + \dots + \delta_n \theta_n$ and the random variables $\theta_0, \dots, \theta_n$, have a Dirichlet distribution $\mathfrak{D}(\alpha_0 t, \dots, \alpha_n t)$ with (real) parameters $\alpha_0 t > 0, \dots, \alpha_n t > 0$, i.e., $(\theta_0, \dots, \theta_n) \in \mathfrak{D}(\alpha_0 t, \dots, \alpha_n t)$ and $B(t)$ is independent of $\Gamma(t)$.

Proof. Representation (5) follows from the fact that, for fixed t , the r.v.s $\theta_0, \dots, \theta_n$, coincide in distribution with the random variables $G_i(t; \alpha_i, \lambda) / \Gamma(t)$, $i = 0, \dots, n$ (see e.g. Wilks 1962), and by the theorem of Sukhatme (1937), the latter are independent of $\Gamma(t)$ which yields the independence of $B(t)$ and $\Gamma(t)$. \square

Lemma 1 is fundamental in the study of LG processes since it links their underlying LG distribution to the classical polynomial splines and in general to the so called, generalized B-splines (known also as Dirichlet splines). This link, as will be demonstrated, provides a different, spline-approximation insight into the distributional properties of LG processes. It is interesting, both from the theoretical and numerical point of view, since the theory of polynomial spline functions is well developed (see e.g. Schumaker 1981) and offers also numerically efficient recurrence formulas for the evaluation of (B-)splines (see De Boor 2001) which, as we will see, can be useful in dealing with LG distributions.

In order to follow the link of the distribution of $LG(t; \delta, \alpha, \lambda, n)$ to splines, provided by Lemma 1, let us first note that, for integer values of the parameters $\alpha_0 t > 0, \dots, \alpha_n t > 0$, the density, $f_{B(t)}(x)$, of the random variable, $B(t)$, coincides with a polynomial B-spline. This is an important probabilistic interpretation of B-splines, established independently by Ignatov and Kaishev (1985, 1989) and Karlin et al. (1986). In order to give a more precise formulation of this result, which will be used in the sequel, let us recall some background properties of polynomial B-splines. Let $\delta = \{\delta_0, \dots, \delta_n\}$ denote a set of distinct real values, called knots of the spline and denote by $\alpha = \{\alpha_0, \dots, \alpha_n\}$ the set of their corresponding integer-valued multiplicities. The multiplicity $\alpha_i = 1, 2, \dots$, equals the number of repetitions of the knot δ_i in the set of possibly coincident knots of the spline. Let us recall that the polynomial B-spline $M \left(x; \delta_0, \dots, \delta_n \right)_{\alpha_0, \dots, \alpha_n}$ of order $r = \alpha_0 + \dots + \alpha_n - 1$ (degree $r - 1$) with knots $\delta = \{\delta_0, \dots, \delta_n\}$ of multiplicities $\alpha = \{\alpha_0, \dots, \alpha_n\}$ coincides with a polynomial of degree $r - 1$ between its adjacent (distinct) knots and is defined as the r -th order divided difference of the function $f(y) = r(y - x)_+^{r-1}$, i.e.,

$$M \left(x; \delta_0, \dots, \delta_n \right)_{\alpha_0, \dots, \alpha_n} = [\delta_0, \dots, \delta_n] f(y).$$

The B-spline $M \left(x; \delta_0, \dots, \delta_n \right)_{\alpha_0, \dots, \alpha_n}$ has the following explicit representations. If knots are pairwise distinct, i.e., their multiplicities $\alpha_0 = 1, \dots, \alpha_n = 1$, then

$$M \left(x; \delta_0, \dots, \delta_n \right)_{1, \dots, 1} = n \sum_{i=0}^n (\delta_i - x)_+^{n-1} / \prod_{j=0, j \neq i}^n (\delta_i - \delta_j)^{n-1}$$

If some of the knots coincide, i.e., $\alpha_0 \geq 1, \dots, \alpha_n \geq 1$, then

$$M \left(\begin{matrix} x; \delta_0, \dots, \delta_n \\ \alpha_0, \dots, \alpha_n \end{matrix} \right) = \sum_{i=0}^n D^{\alpha_i-1} \xi_i(\delta_i) / (\alpha_i - 1)!,$$

where $\xi_i(y) = r(y-x)_+^{d-1} / \prod_{j=0, j \neq i}^n (y-\delta_j)^{n-1}$ and D^{α_i-1} denotes the $(\alpha_i - 1)$ -th derivative.

The following theorem, due to Ignatov and Kaishev (1989) establishes an important probabilistic interpretation of polynomial B-splines which we will use to study the distributional properties of LG processes.

Theorem 1. (Ignatov and Kaishev 1989). The polynomial B-spline $M \left(\begin{matrix} x; \delta_0, \dots, \delta_n \\ \alpha_0, \dots, \alpha_n \end{matrix} \right)$ of degree $\alpha_0 + \dots + \alpha_n$ coincides with the density $f_B(x)$, with respect to the Lebesgue measure of the random variable

$$B = \delta_0 \theta_0 + \dots + \delta_n \theta_n,$$

where the random variables $\theta_0, \dots, \theta_n$ have joint Dirichlet distribution with parameters, $\alpha_0, \dots, \alpha_n$, i.e., $(\theta_0, \dots, \theta_n) \in \mathfrak{D}(\alpha_0, \dots, \alpha_n)$.

Let us note that the Dirichlet parameters $\alpha_0, \dots, \alpha_n$, may in general take real values. In this case the density, $f_B(x)$, has been viewed by Ignatov and Kaishev (1987, 1988) as a generalized B-spline. Independently, Karlin et al. (1986) have also considered similar generalization of B-splines. Later, such densities have been named Dirichlet splines (see Neuman 1994 and zu Castell 2002). Here and thereafter, we will use the two terms, generalized B-splines and Dirichlet splines interchangeably. For consistency with the polynomial B-spline notation, we will alternatively denote, $f_B(x)$ as $M_g \left(\begin{matrix} x; \delta_0, \dots, \delta_n \\ \alpha_0, \dots, \alpha_n \end{matrix} \right)$, to stress its interpretation as a generalized B-spline i.e. a Dirichlet spline. We will make use of the following properties of generalized B-splines.

Denote by $\delta = \{\delta_0, \dots, \delta_n\}$, the set of distinct knots, $\delta_i \in \mathbb{R}$, and by $\alpha = \{\alpha_0, \dots, \alpha_n\}$ the set of (positive real) multiplicities of $\delta = \{\delta_0, \dots, \delta_n\}$. Denote also by $\hat{\alpha}_i$, the integer part of α_i , and by $\bar{\alpha}_i = \alpha_i - \hat{\alpha}_i$, its fractional part. Without loss of generality, assume that, $\bar{\alpha}_i > 0, i = 0, \dots, r$ and that, and $\bar{\alpha}_i = 0, i = r+1, \dots, r+m, (n = r+m)$.

The generalized B-spline can be expressed as the following divided difference (see Ignatov and Kaishev 1988)

$$M_g \left(\begin{matrix} x; \delta_0, \dots, \delta_n \\ \alpha_0, \dots, \alpha_n \end{matrix} \right) = \begin{cases} \left[\begin{matrix} \delta_0, \dots, \delta_r, \delta_{r+1}, \dots, \delta_{r+m} \\ \hat{\alpha}_0, \dots, \hat{\alpha}_r, \alpha_{r+1}, \dots, \alpha_{r+m} \end{matrix} \right] H(u), & \text{if } x \in [\mathcal{D}] \\ 0, & \text{otherwise} \end{cases}$$

where

$$H(u) = \frac{\Gamma(\alpha_0 + \dots + \alpha_{r+m})}{\Gamma(l-1) \Gamma(\bar{\alpha}_0) \dots \Gamma(\bar{\alpha}_r)} \int_{S_r} \left(u - x + \sum_{i=0}^r (\delta_i - u) y_i \right)_+^{l-2} y_0^{\bar{\alpha}_0-1} \dots y_r^{\bar{\alpha}_r-1} dy_0 \dots dy_r,$$

$l = \sum_{i=0}^{r+m} \hat{\alpha}_i$, ($l \geq 2$), $S_r = \{(y_0, \dots, y_r) : 0 \leq y_i, i = 0, \dots, r, y_0 + \dots + y_r \leq 1\}$ and \mathcal{D} is the set of all δ_i 's for which $\hat{\alpha}_i \geq 1$, $[[\mathcal{D}]]$ denotes the convex hull of \mathcal{D} .

The numerical evaluation of generalized B-splines is facilitated by their representation in terms of classical polynomial B-splines, due to Kaishev (1991). For further properties of generalized B-splines (i.e. Dirichlet splines) we refer to Neuman (1994) and zu Castell (2002).

We can now formulate and prove the following proposition which expresses the density of $LG(t)$ in terms of Dirichlet splines.

Proposition 1. For fixed t , the density, $f_{LG(t)}(x)$, of $LG(t; \delta, \alpha, \lambda, n)$ is given by

$$f_{LG(t)}(x) = \int_0^{+\infty} \frac{\lambda^{(\alpha_0 + \dots + \alpha_n)t}}{\Gamma((\alpha_0 + \dots + \alpha_n)t)} y^{(\alpha_0 + \dots + \alpha_n)t-2} e^{-\lambda y} M_g \left(\begin{matrix} x \\ y \end{matrix}; \delta_0, \dots, \delta_n \right) dy, \quad (6)$$

where $M_g \left(\begin{matrix} x \\ y \end{matrix}; \delta_0, \dots, \delta_n \right)$, is a Dirichlet spline with knots, $\delta_0, \dots, \delta_n$, of (real) multiplicities, $\alpha_0 t, \dots, \alpha_n t$.

Proof. By Lemma 1, we have that $LG(t; \delta, \alpha, \lambda, n)$ is expressed as a product of two independent random variables with known densities. More precisely, the random variable, $\Gamma(t) = \sum_{i=0}^n G_i(t; \alpha_i, \lambda)$, is gamma distributed with parameters $(\alpha_0 + \dots + \alpha_n)t$ and λ , i.e., $\Gamma(t) \sim \text{Gamma}((\alpha_0 + \dots + \alpha_n)t, \lambda)$, whereas, by Theorem 1, the density $f_{B(t)}(x)$, of the random variable, $B(t)$, coincides with a generalized B-spline. We will denote the density of $\Gamma(t)$, as $f_{\Gamma(t)}(x)$.

Thus, we have

$$\begin{aligned} f_{LG(t)}(x) &= \frac{d}{dx} P(B(t) \Gamma(t) \leq x) \\ &= \frac{d}{dx} P(B(t) \leq x/\Gamma(t)) \\ &= \frac{d}{dx} \int_0^{+\infty} P(B(t) \leq x/y) f_{\Gamma(t)}(y) dy \\ &= \int_0^{+\infty} f_{B(t)}(x/y) f_{\Gamma(t)}(y) \frac{1}{y} dy. \end{aligned}$$

The result now follows, noting that

$$f_{\Gamma(t)}(y) = \frac{\lambda^{(\alpha_0 + \dots + \alpha_n)t}}{\Gamma((\alpha_0 + \dots + \alpha_n)t)} y^{(\alpha_0 + \dots + \alpha_n)t-1} e^{-\lambda y}, \quad (7)$$

and that $f_{B(t)}(x/y)$ coincides with a generalized B-spline, $M_g \left(x/y; \delta_0, \dots, \delta_n \right)_{\alpha_0 t, \dots, \alpha_n t}$. \square

Several properties of the process $LG(t; \delta, \alpha, \lambda, n)$ easily follow from Proposition 1.

Corollary 1. If $\alpha_i t$ are integer valued, the density, $f_{LG(t)}(x)$, of $LG(t; \delta, \alpha, \lambda, n)$ is given by

$$f_{LG(t)}(x) = \int_0^{+\infty} \frac{\lambda^{(\alpha_0 + \dots + \alpha_n)t}}{\Gamma((\alpha_0 + \dots + \alpha_n)t)} y^{(\alpha_0 + \dots + \alpha_n)t-2} e^{-\lambda y} M_g \left(\frac{x}{y}; \delta_0, \dots, \delta_n \right)_{\alpha_0 t, \dots, \alpha_n t} dy, \quad (8)$$

where $M_g \left(\frac{x}{y}; \delta_0, \dots, \delta_n \right)_{\alpha_0 t, \dots, \alpha_n t}$ is a polynomial B-spline with knots, $\delta_0, \dots, \delta_n$, of multiplicities, $\alpha_0 t, \dots, \alpha_n t$.

Corollary 2. The density of the increments, $LG(t+h; \delta, \alpha, \lambda, n) - LG(t; \delta, \alpha, \lambda, n)$, $h > 0$ is given by

$$\int_0^{+\infty} \frac{\lambda^{(\alpha_0 + \dots + \alpha_n)h}}{\Gamma((\alpha_0 + \dots + \alpha_n)h)} y^{(\alpha_0 + \dots + \alpha_n)h-2} e^{-\lambda y} M_g \left(\frac{x}{y}; \delta_0, \dots, \delta_n \right)_{\alpha_0 h, \dots, \alpha_n h} dy.$$

Proof. We have

$$LG(t+h; \delta, \alpha, \lambda, n) - LG(t; \delta, \alpha, \lambda, n) = \delta_0 [G_0(t+h; \alpha_0, \lambda) - G_0(t; \alpha_0, \lambda)] + \dots + \delta_n [G_n(t+h; \alpha_n, \lambda) - G_n(t; \alpha_n, \lambda)],$$

which, for fixed t and $h > 0$, is a linear combination of gamma variates $g_i = [G_i(t+h; \alpha_i, \lambda) - G_i(t; \alpha_i, \lambda)]$ with density

$$f_{g_i}(x; \alpha_i, \lambda, h) = \frac{\lambda^{\alpha_i h}}{\Gamma(\alpha_i h)} x^{\alpha_i h-1} e^{-\lambda x}.$$

Obviously, for fixed t and $h > 0$ we can write

$$LG(t+h; \delta, \alpha, \lambda, n) - LG(t; \delta, \alpha, \lambda, n) = \left[(\delta_0 g_0 + \dots + \delta_n g_n) \right] / \left[\sum_{i=0}^n g_i \right] \left[\sum_{i=0}^n g_i \right],$$

Hence, the Corollary follows in view of the independence of $\left[\sum_{i=0}^n g_i \right]$ from $\left[(\delta_0 g_0 + \dots + \delta_n g_n) / \sum_{i=0}^n g_i \right]$, by the theorem of Sukhatme (1937). \square

We conclude this section by noting that the following proposition which is a direct consequence of the scaling property of the gamma distribution provides an alternative way of expressing the underlying LG distribution, as a linear combination of $n + 1$ gamma variates with different shape and scale parameters.

Proposition 2. The process $LG(t; \delta, \alpha, \lambda, n)$ admits the representation

$$LG(t; \delta, \alpha, \lambda, n) = \text{sgn}(\delta_0) G_0(t; \alpha_0, \lambda / |\delta_0|) + \dots + \text{sgn}(\delta_n) G_n(t; \alpha_n, \lambda / |\delta_n|). \quad (9)$$

It has to be noted that extensive literature exists which deals with the distribution underlying (11), in the special case when $\text{sgn}(\delta_j) = +1$, $j = 0, \dots, n$. In the latter case, an explicit formula for the density of $LG(t; \delta, \alpha, \lambda, n)$ when t is fixed, $t > 0$, is given by Moschopoulos (1985).

2.2 The Variance Gamma and the Bilateral Gamma special cases

New expressions for the density of the Variance Gamma, $VG(t; \theta, \sigma, \nu)$ and the Bilateral Gamma processes directly follow from their LG representation, Proposition 1 and Corollary 1. We have

Corollary 3. For fixed t , the density, $f_{VG(t)}(x; \theta, \sigma, \nu)$, of the Variance Gamma process, $VG(t; \theta, \sigma, \nu)$ is given by

$$f_{VG(t)}(x; \theta, \sigma, \nu) = \int_0^{+\infty} \frac{1}{\Gamma(2t/\nu)} y^{2t/\nu-2} e^{-y} M_g \left(\frac{x}{y}; -\frac{\sqrt{\theta^2 + 2\sigma^2/\nu} - \theta}{2/t/\nu} \nu, \frac{\sqrt{\theta^2 + 2\sigma^2/\nu} + \theta}{2/t/\nu} \nu \right) dy, \quad (10)$$

where $M_g \left(\frac{x}{y}; \cdot, \cdot \right)$ coincides with a classical polynomial B-spline of degree $\frac{2t}{\nu} - 2$ if $\frac{t}{\nu}$ is integer. Recall that a different expression for the density $f_{VG(t)}(x; \theta, \sigma, \nu)$, has been given by Madan et al. (1998) as follows

$$f_{VG(t)}(x; \theta, \sigma, \nu) = \int_0^{+\infty} \frac{1}{\sigma \sqrt{2\pi y}} e^{-\frac{(x-\theta y)^2}{2\sigma^2 y}} \frac{1}{\nu^{t/\nu} \Gamma(t/\nu)} y^{t/\nu-1} e^{-\frac{y}{\nu}} dy.$$

For the density of the Bilateral Gamma process we have ,

Corollary 4. For fixed, $t > 0$, the density, $f_{BG(t)}(x)$, of the Bilateral Gamma process, $BG(t; \alpha^+, \lambda^+, \alpha^-, \lambda^-)$, is given by

$$f_{BG(t)}(x) = \int_0^{+\infty} \frac{1}{\Gamma((\alpha^- + \alpha^+) t)} y^{(\alpha^- + \alpha^+) t - 2} e^{-y} M_g \left(\frac{x}{y}; -(\lambda^-)^{-1}, (\lambda^+)^{-1} \right) dy. \quad (11)$$

where $M_g\left(\frac{x}{y}; \alpha^- t, \alpha^+ t\right)$ coincides with a polynomial B-spline of degree $\alpha^- t + \alpha^+ t - 2$ if the parameters, $\alpha^- t, \alpha^+ t$, are integer. For comparison with (11), for $t = 1$, the density, $f_{BG(t)}(x)$ given by Küchler and Tappe (2008) is

$$f_{BG}(x) = \frac{(\lambda^+)^{\alpha^+} (\lambda^-)^{\alpha^-}}{(\lambda^+ + \lambda^-)^{(\alpha^+ + \alpha^-)/2} \Gamma(\alpha^+)} x^{(\alpha_0 + \alpha_1)/2 - 1} e^{-(x(\lambda^+ - \lambda^-))/2} W_{(\alpha^+ - \alpha^-)/2, (\alpha^+ + \alpha^- - 1)/2}(x(\lambda^+ + \lambda^-)),$$

where $W_{\omega, \mu}(z)$ is the Whittaker function defined as

$$W_{\omega, \mu}(z) = \frac{z^\omega e^{-z/2}}{\Gamma(\mu - \omega + 1/2)} \int_0^{+\infty} t^{\mu - \omega - 1/2} e^{-t} \left(1 + \frac{t}{z}\right)^{\mu + \omega - 1/2} dt$$

for $\mu - \omega > -\frac{1}{2}$.

In conclusion, let us note that expressions (6), (8) (10) and (11), involving generalized or polynomial B-splines, are numerically appealing, due to the recurrent computation of polynomial B-splines (see De Boor 1976) and the cubature formula for generalized B-splines (i.e. Dirichlet splines) in terms of polynomial B-splines, due to Kaishev (1991).

2.3 The Lévy triplet and related properties

As known, (see e.g. Cont and Tankov 2004, Section 3.4), the characteristic triplet, (γ, A, κ) , i.e., the Lévy triplet of a (multivariate) Lévy process, comprised by, a (real) vector γ , a positive definite (covariance) matrix A and a positive measure κ , related to its Lévy-Itô decomposition, uniquely determines its distribution. Following the Lévy-Khinchin representation formula, it is possible to express the characteristic function, $\phi_{LG}(z) = \mathbb{E}[e^{i z LG(t)}]$, of a LG process, in terms of its corresponding Lévy triplet (γ, A, κ) and deduce some path-wise properties. The following Proposition gives the Lévy triplet of an LG process.

Proposition 3. $LG(t; \delta, \alpha, \lambda, n)$ is a Lévy process with characteristic triplet $(\gamma, 0, \kappa_{LG})$, where the Lévy measure $\kappa_{LG}(dx)$ is given by

$$\kappa_{LG}(dx) = \left(\sum_{i \in D_-} \frac{\alpha_i e^{-\lambda \frac{|x|}{|\delta_i|}}}{|x|} \mathbb{1}_{x < 0} + \sum_{i \in D_+} \frac{\alpha_i e^{-\lambda \frac{x}{\delta_i}}}{x} \mathbb{1}_{x > 0} \right) dx \quad (12)$$

with $D_- = \{i \in I : \text{sign}(\delta_i) = -1\}$, $D_+ = \{i \in I : \text{sign}(\delta_i) = +1\}$, $I = \{0, \dots, n\}$ and

$$\gamma = \frac{1}{\lambda} \left(\sum_{i \in D_+} \alpha_i \delta_i \left(1 - e^{-\frac{\lambda}{\delta_i}} \right) - \sum_{i \in D_-} \alpha_i |\delta_i| \left(1 - e^{-\frac{\lambda}{|\delta_i|}} \right) \right) < \infty. \quad (13)$$

Proof. Since $LG(t; \delta, \alpha, \lambda, n)$ is defined as a linear combination of the gamma processes, $G_i(t; \alpha_i, \lambda)$, $i = 0, \dots, n$, which are Lévy processes, $LG(t; \delta, \alpha, \lambda, n)$ is also a Lévy process (see, e.g. Theorem 4.1 of Cont and Tankov 2004). Expression (12) for the Lévy measure $\kappa_{LG} dx$ follows from the additivity property of the Lévy measure (see e.g. Proposition 5.3, Theorem 4.1 and Example 4.1 of Cont and Tankov 2004) and representation (11), noting that the Lévy measure of the process $\beta_i(t) = \text{sgn}(\delta_i) G_i(t; \alpha_i, \lambda / |\delta_i|)$ is

$$\kappa_{\beta_i}(dx) = \left(\frac{\alpha_i \exp(-\lambda |x| / |\delta_i|)}{|x|} \mathbb{1}_{\{x < 0, \delta_i < 0\}} + \frac{\alpha_i \exp(-\lambda x / |\delta_i|)}{x} \mathbb{1}_{\{x > 0, \delta_i > 0\}} \right) dx.$$

Clearly, there is no Brownian motion component in the definition of $LG(t; \delta, \alpha, \lambda, n)$, hence the second parameter of the characteristic triplet is 0.

Due to the fact that, the drift parameter of the gamma process, $G_i(t; \alpha_i, \lambda)$, is 0, from Corollary 3.1 of Cont and Tankov (2004), we have that

$$\gamma = \int_{|x| \leq 1} x \kappa_{LG}(dx), \quad (14)$$

and by substituting (12) in (14) we obtain (13). \square

From the analytical properties of its characteristic triplet, $(\gamma, 0, \kappa_{LG})$, it is straightforward to deduce that the LG process has piece-wise constant trajectories, is a process of finite variation and infinite activity (i.e., may have infinitely many small jumps). These path-wise properties are in fact inherited from the gamma processes, underlying the definition of an LG process (see Definition 1). Let us also note that, the LG process offers extended flexibility in controlling its Lévy measure, $\kappa_{LG}(dx)$, compared to the VG and BG processes. In the case of an LG process, one can manipulate its parameters and alter its Lévy measure, $\kappa_{LG}(dx)$ so that the distribution of the size of only the positive jumps, or only the negative jumps changes, (see Fig. 1, right panel). This may often be desirable in practical applications, but is not possible for the VG process. Changing the VG parameters, θ , σ and ν , affects both the positive and the negative parts of its Lévy measure, which is illustrated in Fig. 1, left panel.

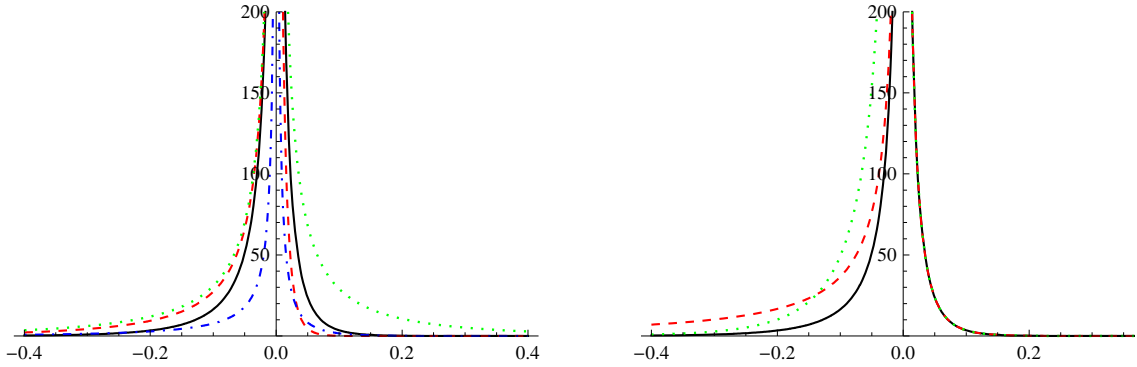


Fig. 1 left panel: Lévy measure of a VG process for the following four sets of parameters $\theta = -0.29$, $\sigma = 0.19$, $\nu = 0.25$ (solid line); $\theta = -0.99$, $\sigma = 0.19$, $\nu = 0.25$ (dashed); $\theta = -0.29$, $\sigma = 0.99$, $\nu = 0.25$ (dotted) and $\theta = -0.29$, $\sigma = 0.19$, $\nu = 0.95$ (dot-dashed); right panel: The LG Lévy measure for $\lambda = 1$, and the following three sets of parameters $\delta_0 = -0.11$, $\delta_1 = 0.04$, $\alpha_0 = \alpha_1 = 3.99$ (solid line); $\delta_0 = -1.13$, $\delta_1 = 0.04$, $\alpha_0 = \alpha_1 = 3.99$ (dashed); and $\delta_0 = -0.11$, $\delta_1 = 0.04$, $\alpha_0 = 11.98$, $\alpha_1 = 3.99$ (dotted);

As known, (see Proposition 3.18 of Cont and Tankov 2004) the exponent of a (univariate) Lévy process with characteristic triplet, (γ, A, κ) is a martingale if and only if, $\int_{|x| \geq 1} e^x \kappa(dx) < \infty$ and

$$\frac{A}{2} + \gamma + \int_{-\infty}^{+\infty} (e^x - 1 - x \mathbb{1}_{|x| \leq 1}) \kappa_{LG}(dx) = 0. \quad (15)$$

Based on this result, Propositions 4 and 5 establish the conditions for the exponent of an LG process to be a martingale a property which is important in financial applications.

Proposition 4. Given $n \geq 1$, $\alpha_i > 0$, $\delta_i \neq 0$, $i = 0, \dots, n$, $\int_{|x| \geq 1} e^x \kappa_{LG}(dx) < \infty$ if $\lambda > \max_{i \in D_+} \{\delta_i\}$.

Proof. It can be directly verified, substituting $\kappa_{LG}(dx)$ from (12) that, for $x > 0$,

$$\int_{|x| \geq 1} e^x \kappa_{LG}(dx) = \sum_{i \in D_+} \int_1^{+\infty} \frac{\alpha_i \exp[-x(\lambda/\delta_i - 1)]}{x} dx. \quad (16)$$

We have that,

$$\int_1^{+\infty} \frac{\alpha_i \exp[-x(\lambda/\delta_i - 1)]}{x} dx = \begin{cases} \alpha_i E_1(\lambda/\delta_i - 1) < \infty, & \text{if } \lambda > \delta_i \\ \text{diverges,} & \text{otherwise} \end{cases}$$

where $E_1(\lambda/\delta_i - 1)$ denotes the *Exponential Integral* (defined in section 5.1.4 of Abramowitz and Stegun 1972), evaluated at $\lambda/\delta_i - 1 > 0$, from where it can be seen that, in order for the sum in (16) to converge, the condition $\lambda > \max_{i \in D_+} \{\delta_i\}$ needs to be imposed.

Similarly, it can be verified that, for $x < 0$, we have that

$$\int_{|x| \geq 1} e^x \kappa_{LG}(dx) = \sum_{i \in D_-} \int_1^{+\infty} \frac{\alpha_i \exp[-|x|(\lambda/\delta_i + 1)]}{|x|} dx = - \sum_{i \in D_-} \alpha_i \text{Ei}(\lambda/\delta_i - 1) < \infty,$$

where $\text{Ei}(\lambda/\delta_i - 1)$ denotes the Exponential Integral function (defined in section 5.1.2 of Abramowitz and Stegun 1972), evaluated at $\lambda/\delta_i - 1 < 0$, from where it can be seen that, in order for the sum in (16) to converge, no additional conditions on the parameters λ and δ_i need to be imposed. \square

Proposition 5. There exist $n \geq 1$, $\alpha_i > 0$, $\delta_i \neq 0$, $i = 0, \dots, n$ and $\lambda > \max_{i \in D_+} \{\delta_i\}$ such that, the $\exp(LG(t; \delta, \alpha, \lambda, n))$ is a martingale, i.e.,

$$\int_{-\infty}^{+\infty} (e^x - 1) \kappa_{LG}(dx) = 0. \quad (17)$$

Proof. Clearly, the necessary condition, $\lambda > \max_{i \in D_+} \{\delta_i\}$, established by Lemma 4, can be met for arbitrary positive real parameters $\{\delta_i\}$, $i \in D_+$. The necessary and sufficient condition (17), for $\exp(LG(t; \delta, \alpha, \lambda, n))$ to be a martingale, directly follows from (15) and (14), noting that, for a LG process, $A = 0$. For the integral in (17), we have

$$\begin{aligned} \int_{-\infty}^{+\infty} (e^x - 1) \kappa_{LG}(dx) &= \\ \int_{-\infty}^0 x \sum_{j=0}^{\infty} \frac{x^j}{(j+1)!} \sum_{i \in D_-} \alpha_i \frac{e^{-\lambda \frac{|x|}{|\delta_i|}}}{|x|} dx + \int_0^{+\infty} x \sum_{j=0}^{\infty} \frac{x^j}{(j+1)!} \sum_{i \in D_+} \alpha_i \frac{e^{-\lambda \frac{x}{\delta_i}}}{x} dx &= \\ \sum_{i \in D_+} \alpha_i \sum_{j=0}^{\infty} \int_0^{+\infty} \frac{x^j}{(j+1)!} e^{-\lambda \frac{x}{\delta_i}} dx - \sum_{i \in D_-} \alpha_i \sum_{j=0}^{\infty} \int_{-\infty}^0 \frac{x^j}{(j+1)!} e^{\lambda \frac{x}{|\delta_i|}} dx &= \\ \sum_{i \in D_+} \alpha_i \sum_{j=0}^{\infty} \left(\frac{\delta_i}{\lambda}\right)^{j+1} \frac{1}{j+1} - \sum_{i \in D_-} \alpha_i \sum_{j=0}^{\infty} (-1)^j \left(\frac{|\delta_i|}{\lambda}\right)^{j+1} \frac{1}{j+1} &= \\ - \sum_{i \in D_+} \alpha_i \ln\left(1 - \frac{\delta_i}{\lambda}\right) - \sum_{i \in D_-} \alpha_i \ln\left(1 + \frac{|\delta_i|}{\lambda}\right), \end{aligned} \quad (18)$$

where $\ln\left(1 - \frac{\delta_i}{\lambda}\right)$ is well defined, given that, $\lambda > \max_{i \in D_+} \{\delta_i\}$, as required by Proposition 4. It is not difficult to see that the right-hand side of (18) vanishes if $n \geq 1$, the sets D^- and D^+ have equal cardinality and if

$$-\alpha_{i^-} \ln\left(1 + \frac{|\delta_{i^-}|}{\lambda}\right) = \alpha_{i^+} \ln\left(1 - \frac{\delta_{i^+}}{\lambda}\right),$$

where $i^- \in D^-$ and $i^+ \in D^+$, which holds true if

$$-\alpha_{i^-} = \alpha_{i^+}, |\delta_{i^-}| = -\frac{\delta_{i^+} \lambda}{\delta_{i^+} - \lambda} \text{ and } \lambda > \max_{i \in D_+} \{\delta_i\}. \quad (19)$$

Hence, for a fixed $n \geq 1$, one can always chose a set $\{\delta_i\}$, $i \in D_+$ and select values, λ , $|\delta_{i^-}|$, $i^- \in D_-$, and α_i , $i \in I$, according to (19), so that (18) vanishes, which completes the proof of the asserted existence. \square

Remark 1. Propositions 4 and 5 state that, it is possible to select the parameters n , δ , α and λ of a LG process in such a way that the exponent, $\exp(LG(t; \delta, \alpha, \lambda, n))$, is a martingale. However, it is not difficult to see from the LG representation, (3), of a VG process that, there does not exist a set of VG parameters, (θ, σ, ν) for which $\exp(VG(t; \theta, \sigma, \nu))$ is a martingale.

We conclude this section by briefly indicating that the (univariate) LG process can be used for modelling asset price dynamics. Define the (risk-neutral) asset price process, $S(t)$ as

$$S(t) = S(0) \exp((r - q + \omega)t + LG(t; \delta, \alpha, \lambda, n)) \quad (20)$$

where r - the (constant) risk-free rate, q - the dividend yield, and the constant ω is chosen so that $\mathbb{E}(S(t)) = S(0) \exp((r - q)t)$, i.e.

$$\omega = \sum_{i \in D_+} \alpha_i \log \left(1 - \frac{\delta_i}{\lambda} \right) + \sum_{i \in D_-} \alpha_i \log \left(1 + \frac{|\delta_i|}{\lambda} \right) \quad (21)$$

which follows from Proposition 5. We therefore require $\lambda > \max_{i \in D_+} \{\delta_i\}$. Note that, in the special case of the $VG(t; \theta, \sigma, \nu)$ process (21) yields

$$\omega = \frac{1}{\nu} \log \left(1 - \theta \nu - \frac{\sigma^2 \nu}{2} \right),$$

where $1 > \frac{\sqrt{\theta^2 + 2\sigma^2/\nu} + \theta}{2} \nu$ (which implies $1 > (\theta + \sigma^2/2) \nu$).

The model given by (20) can be used in (exotic) option pricing and pricing participating life insurance contracts. Due to volume limitations, details of how this is done are outside the scope of this paper and will appear elsewhere.

3 Multivariate LG processes

In what follows we will consider the multivariate generalization of univariate LG processes, defined in Section 2, which, as we will illustrate in Section 4, can be very useful in modelling the joint dynamics of possibly dependent prices of multiple assets. We start with the following definition.

Definition 2. Define the multivariate LG process, $\mathbf{LG}(t) = (\mathbf{LG}_1(t), \dots, \mathbf{LG}_s(t))'$, ($s \geq 1$) as

$$\begin{aligned} \mathbf{LG}_1(t) &= \delta_{1,0} G_0(t; \alpha_0, \lambda) + \dots + \delta_{1,n} G_n(t; \alpha_n, \lambda) \\ &\quad \vdots \\ \mathbf{LG}_s(t) &= \delta_{s,0} G_0(t; \alpha_0, \lambda) + \dots + \delta_{s,n} G_n(t; \alpha_n, \lambda), \end{aligned} \quad (22)$$

where $\delta_j = (\delta_{1,j}, \dots, \delta_{s,j})'$, $\delta_j \in \mathbb{R}^s$, $j = 0, \dots, n$, are pairwise distinct, $n \geq s$, $\lambda > 0$, $\alpha = \{\alpha_0, \dots, \alpha_n\}$, $\alpha_j > 0$, $j = 0, \dots, n$ and $G_j(t; \alpha_j, \lambda)$, $j = 0, \dots, n$ are independent Gamma processes defined on a probability space $(\Omega, \mathcal{F}, \mathbb{P})$.

Multivariate LG processes are illustrated graphically in Fig. 2 where we have simulated sample paths from two and three dimensional LG processes with coordinates

$$\begin{aligned} \mathbf{LG}_1(t) &= -5 G_0(t; 1, 20) - 2 G_1(t; 10, 20) + 2 G_2(t; 30, 20), \\ \mathbf{LG}_2(t) &= -2 G_0(t; 1, 20) + 1 G_1(t; 10, 20) + 2 G_2(t; 30, 20), \end{aligned}$$

with $\mu_{\mathbf{LG}_1} = 1.75$, $\nu_{\mathbf{LG}_1} = 0.46$, $\mu_{\mathbf{LG}_2} = 3.40$, $\nu_{\mathbf{LG}_2} = 0.34$ and

$$\begin{aligned} \mathbf{LG}_1(t) &= -5 G_0(t; 1, 20) - 2 G_1(t; 10, 20) + 2 G_2(t; 30, 20), \\ \mathbf{LG}_2(t) &= -6 G_0(t; 1, 20) - 3 G_1(t; 10, 20) + 1 G_2(t; 30, 20), \\ \mathbf{LG}_3(t) &= -3 G_0(t; 1, 20) - 1 G_1(t; 10, 20) + 1 G_2(t; 30, 20), \end{aligned}$$

with $\mu_{\mathbf{LG}_1} = 1.75$, $\nu_{\mathbf{LG}_1} = 0.46$, $\mu_{\mathbf{LG}_2} = -0.3$, $\nu_{\mathbf{LG}_2} = 0.39$, and $\mu_{\mathbf{LG}_3} = 0.85$, $\nu_{\mathbf{LG}_3} = 0.12$ respectively, where $\mu_{\mathbf{LG}_i}$, $\nu_{\mathbf{LG}_i}$ $i = 1, 2, 3$ are the corresponding (marginal) mean and variance rates. As can be seen from Fig. 2 all coordinates jump together, which is a consequence of the fact that for a fixed t , a multivariate LG process represents a linear transformation of a set of Gamma processes, in this case these are $G_0(t; 1, 20)$, $G_1(t; 10, 20)$ and $G_2(t; 30, 20)$. It should also be noted that simulation of a multivariate LG is straightforward since it requires simulating Gamma sample paths which is done very efficiently, applying the Dirichlet bridge sampling method, recently proposed by Kaishev and Dimitrova (2009).

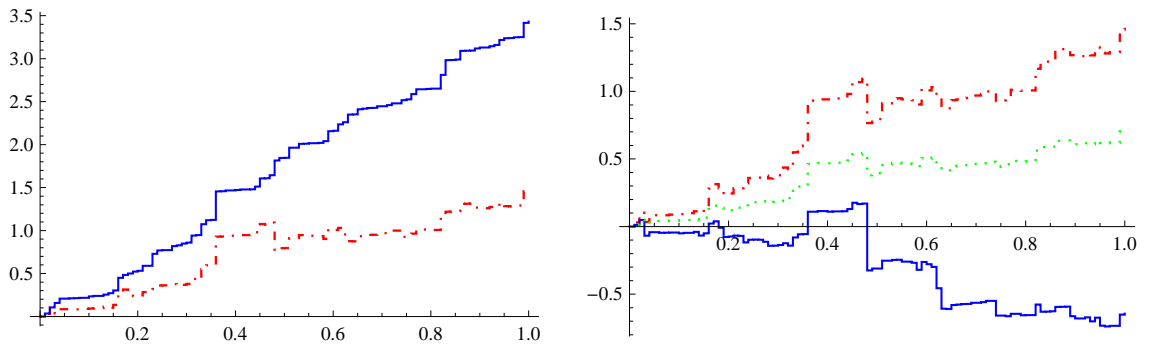


Fig. 2 Sample paths of a two and three-dimensional LG processes.

Before proceeding further, we will need to introduce the following notation. For a given set $A \subset \mathbb{R}^s$, $\mathbb{1}_A(x)$, $[[A]]$, $\text{vol}_s(A)$, $\dim(A)$ denotes the indicator function, the closed convex hull, the s -dimensional Lebesgue measure and the dimension respectively. By $\mathbf{x}, \mathbf{y}, \mathbf{z}, \dots$ we denote elements (vectors) in the Euclidean space \mathbb{R}^s ($s \geq 1$), i.e., $\mathbf{x} = (x_1, \dots, x_s)'$ where, $'$, means transposition and we use subscripts to index vectors, i.e., $\mathbf{x}_j = (x_{1,j}, \dots, x_{s,j})'$, $j = 0, 1, \dots$. We denote by $\mathbf{x} \cdot \mathbf{y} = \sum_{i=1}^s x_i y_i$ the inner product of $\mathbf{x}, \mathbf{y} \in \mathbb{R}^s$.

3.1 Distributional properties

In what follows, we study distributional properties of multivariate LG processes and establish their relation to multivariate splines. For the purpose we will need to introduce multivariate B-splines, known also as simplex splines. A simplex spline is a multivariate version of the univariate polynomial B-spline defined in Section 2.1. Simplex splines, were first introduced by De Boor (1976) as follows.

Definition 3. (De Boor 1976). Let $\mathfrak{S} = [[\mathbf{y}_0, \dots, \mathbf{y}_r]]$ be any r -simplex in \mathbb{R}^r , $\mathbb{R}^r = \mathbb{R}^s \times \mathbb{R}^{r-s}$, such that $\mathbf{y}_j|_{\mathbb{R}^s} = \boldsymbol{\delta}_j$, $j = 0, \dots, r$, i.e., the first s coordinates of \mathbf{y}_j agree with the vector $\boldsymbol{\delta}_j \in \mathbb{R}^s$, $s \geq 1$. The multivariate (simplex) spline $M(\mathbf{x}; \boldsymbol{\delta}_0, \dots, \boldsymbol{\delta}_r)$ is defined as

$$M(\mathbf{x}; \boldsymbol{\delta}_0, \dots, \boldsymbol{\delta}_r) = \text{vol}_{r-s}(\{\mathbf{u} \in \mathfrak{S} : \mathbf{u}|_{\mathbb{R}^s} = \mathbf{x}\}) / \text{vol}_r(\mathfrak{S}).$$

Note that Definition 3 allows for coalescent knots, $\boldsymbol{\delta}_0, \dots, \boldsymbol{\delta}_r$ of which say, $n + 1 < r + 1$ knots, $\boldsymbol{\delta}_0, \dots, \boldsymbol{\delta}_n$ may be distinct with corresponding multiplicities $\alpha_0, \dots, \alpha_n$. If there are $\boldsymbol{\delta}_0, \dots, \boldsymbol{\delta}_n$ pairwise distinct knots with multiplicities $\alpha_0, \dots, \alpha_n$,

$M(\mathbf{x}; \boldsymbol{\delta}_0, \dots, \boldsymbol{\delta}_r)$, will be alternatively denoted as $M\left(\mathbf{x}; \boldsymbol{\delta}_0, \dots, \boldsymbol{\delta}_n\right)_{\alpha_0, \dots, \alpha_n}$, $\mathbf{v} \in \mathbb{R}^s$ and also as $M\left(x_1, \dots, x_s; \boldsymbol{\delta}_0, \dots, \boldsymbol{\delta}_n\right)_{\alpha_0, \dots, \alpha_n}$.

The simplex spline, $M(\mathbf{x}; \boldsymbol{\delta}_0, \dots, \boldsymbol{\delta}_r)$ is a piecewise polynomial of total degree not exceeding $r - s$ with $r - s - 1$ continuous derivatives when the knots, $\boldsymbol{\delta}_0, \dots, \boldsymbol{\delta}_r$ are in general position. The knots, $\boldsymbol{\delta}_0, \dots, \boldsymbol{\delta}_r$, are said to be in general position if for $j = 1, \dots, s$ and for arbitrary, different indexes $0 \leq i_1, \dots, i_{j+1} \leq r$, we have

$$\det \begin{pmatrix} 1 & \delta_{1,i_1} & \dots & \delta_{j,i_1} \\ 1 & \delta_{1,i_2} & \dots & \delta_{j,i_2} \\ \vdots & \vdots & \dots & \vdots \\ 1 & \delta_{1,i_{j+1}} & \dots & \delta_{j,i_{j+1}} \end{pmatrix} \neq 0.$$

The numerical evaluation of multivariate simplex splines is facilitated by the following recurrence relation, due to Micchelli (1980)

$$M(\mathbf{x}; \boldsymbol{\delta}_0, \dots, \boldsymbol{\delta}_r) = \frac{r}{r-s} \sum_{j=0}^r \lambda_j M(\mathbf{x}; \boldsymbol{\delta}_0, \dots, \boldsymbol{\delta}_{j-1}, \boldsymbol{\delta}_{j+1}, \dots, \boldsymbol{\delta}_r), \quad (23)$$

whenever $r > s$ and the numbers, $\lambda_j \in \mathbb{R}$, are such that, $\mathbf{x} = \sum_{j=0}^r \lambda_j \boldsymbol{\delta}_j$, $\sum_{j=0}^r \lambda_j = 1$.

For further properties of simplex splines see e.g., Neamtu (2001), Cohen et al. (2001) and Prautzsch et al. (2002).

We will now recall that simplex splines have a nice probabilistic interpretation established independently by Karlin et al. (1986) and Ignatov and Kaishev (1985, 1989) which we will exploit in studying the properties of multivariate LG processes. Given the set of knots $\Delta = \{\boldsymbol{\delta}_0, \dots, \boldsymbol{\delta}_r\}$, $\boldsymbol{\delta}_j = (\delta_{1,j}, \dots, \delta_{s,j})'$, $\boldsymbol{\delta}_j \in \mathbb{R}^s$, $j = 0, \dots, r$, consider the random vector $\mathbf{B} = (B_1, \dots, B_s)'$, defined by

$$\mathbf{B} = \boldsymbol{\delta}_0 \theta_0 + \dots + \boldsymbol{\delta}_r \theta_r, \quad (24)$$

with coordinates $B_i = \delta_{i,0} \theta_0 + \dots + \delta_{i,r} \theta_r$, $i = 1, \dots, s$, where the random vector $\boldsymbol{\theta} = (\theta_0, \dots, \theta_r)'$, is Dirichlet distributed with parameters $\alpha = \{1, \dots, 1\}$, i.e. $(\theta_0, \dots, \theta_r) \in \mathcal{D}(1)$.

It will be convenient to view the vectors $\boldsymbol{\delta}_0, \dots, \boldsymbol{\delta}_r$ as points in \mathbb{R}^s , $s \geq 1$. Note that in (24), we allow some of the points $\boldsymbol{\delta}_0, \dots, \boldsymbol{\delta}_n$ to coalesce. Let us assume that only $n+1$ of them are pairwise distinct, say $\boldsymbol{\delta}_0, \dots, \boldsymbol{\delta}_n$, each repeated with multiplicity $\alpha_0, \dots, \alpha_n$, $\alpha_0 + \dots + \alpha_n = r+1$. Then, given the set of distinct knot parameters, $\Delta = \{\boldsymbol{\delta}_0, \dots, \boldsymbol{\delta}_n\}$, following a well known property of the Dirichlet distribution (see e.g., Wilks 1962), the random vector $\mathbf{B} = (B_1, \dots, B_s)'$, defined by (24), can be rewritten as

$$\mathbf{B} = \boldsymbol{\delta}_0 \theta_0 + \dots + \boldsymbol{\delta}_n \theta_n, \quad (25)$$

with coordinates $B_i = \delta_{i,0} \theta_0 + \dots + \delta_{i,n} \theta_n$, $i = 1, \dots, s$, where the random vector $\boldsymbol{\theta} = (\theta_0, \dots, \theta_n)'$, is Dirichlet distributed with parameters $\alpha = \{\alpha_0, \dots, \alpha_n\}$, i.e., $(\theta_0, \dots, \theta_n) \in \mathcal{D}(\alpha_0, \dots, \alpha_n)$.

Assume also that the parameters α , Δ , r , and n , are such that the distribution of the linear transformation \mathbf{B} and its marginal distributions exist and are non-degenerate. Denote by $f_{\mathbf{B}}(\mathbf{x})$ the density of \mathbf{B} . The following result establishes the probabilistic interpretation of simplex splines.

Theorem 2. (Ignatov and Kaishev 1985, 1989). Let $\boldsymbol{\delta}_0, \dots, \boldsymbol{\delta}_n$ be fixed pairwise distinct vectors in \mathbb{R}^s , $n \geq s$, with dimension $\dim(\llbracket \{\boldsymbol{\delta}_0, \dots, \boldsymbol{\delta}_n\} \rrbracket) = s$, then the density $f_{\mathbf{B}}(\mathbf{x})$ with respect to the s -dimensional Lebesgue measure of the random vector \mathbf{B} , defined as in (25), coincides with the simplex spline

$$M \begin{pmatrix} \mathbf{x}; \boldsymbol{\delta}_0, \dots, \boldsymbol{\delta}_n \\ \alpha_0, \dots, \alpha_n \end{pmatrix}$$

with knots $\boldsymbol{\delta}_0, \dots, \boldsymbol{\delta}_n$ having (integer) multiplicities, $\alpha_0, \dots, \alpha_n, \alpha_0 + \dots + \alpha_n = r + 1$.

As in the univariate case, the Dirichlet parameters $\alpha_0, \dots, \alpha_n$, may in general take real values. In this case the density, $f_{\mathbf{B}}(\mathbf{x})$, has been viewed by Ignatov and Kaishev (1987, 1988) as a multivariate generalized B-spline i.e., as multivariate Dirichlet spline. Independently, Karlin et al. (1986) have also considered similar generalization of multivariate simplex splines. For some further properties of multivariate Dirichlet splines see Karlin et al. (1986), Ignatov and Kaishev (1987, 1988) and Neuman (1994).

The following proposition gives for fixed $t > 0$ an expression for the joint density of the multivariate LG process in terms of multivariate Dirichlet splines.

Proposition 6. Let $\boldsymbol{\delta}_0, \dots, \boldsymbol{\delta}_n, \boldsymbol{\delta}_j \in \mathbb{R}^s, n \geq s$, be pairwise distinct and let $\dim \llbracket \{\boldsymbol{\delta}_0, \dots, \boldsymbol{\delta}_n\} \rrbracket = s$, then the density of LG is

$$f_{LG}(x_1, \dots, x_s) = \int_0^{+\infty} \frac{\lambda^{(\alpha_0 + \dots + \alpha_n)t}}{\Gamma((\alpha_0 + \dots + \alpha_n)t)} y^{(\alpha_0 + \dots + \alpha_n)t - (s+1)} e^{-\lambda y} M_g \left(\frac{x_1}{y}, \dots, \frac{x_s}{y}; \boldsymbol{\delta}_0, \dots, \boldsymbol{\delta}_n \right) dy, \tag{26}$$

where $\Gamma(\cdot)$ is the gamma function and $M_g \left(\frac{x_1}{y}, \dots, \frac{x_s}{y}; \boldsymbol{\delta}_0, \dots, \boldsymbol{\delta}_n \right)$ is a multivariate Dirichlet spline with knots $\Delta = \{\boldsymbol{\delta}_0, \dots, \boldsymbol{\delta}_n\}$, of multiplicities $\{\alpha_0 t, \dots, \alpha_n t\}$.

Proof. We have that the multivariate LG process can be represented as

$$LG(t; \Delta, \alpha, \lambda, n) = \mathbf{B}(t) \times \Gamma(t) \tag{27}$$

where $\mathbf{B}(t)$ is defined as in (25) and has a joint density $f_{\mathbf{B}(t)}(\mathbf{x})$, which, by Theorem 2, coincides with a generalized B-spline, and where the random variable, $\Gamma(t) = \sum_{i=0}^n G_i(t; \alpha_i, \lambda)$, independent of $\mathbf{B}(t)$, is gamma distributed with parameters $(\alpha_0 + \dots + \alpha_n)t$ and λ . Thus, we have

$$\begin{aligned} f_{LG}(x_1, \dots, x_s) &= \frac{\partial}{\partial x_1 \dots \partial x_s} P(B_1(t) \times \Gamma(t) \leq x_1, \dots, B_s(t) \times \Gamma(t) \leq x_s) \\ &= \frac{\partial}{\partial x_1 \dots \partial x_s} P\left(B_1(t) \leq \frac{x_1}{\Gamma(t)}, \dots, B_s(t) \leq \frac{x_s}{\Gamma(t)}\right) \\ &= \int_0^{+\infty} \frac{\partial}{\partial x_1 \dots \partial x_s} P\left(B_1(t) \leq \frac{x_1}{y}, \dots, B_s(t) \leq \frac{x_s}{y}\right) f_{\Gamma(t)}(y) dy \end{aligned}$$

$$= \int_0^{+\infty} f_{\mathbf{B}(t)}\left(\frac{x_1}{y}, \dots, \frac{x_s}{y}\right) f_{\Gamma(t)}(y) \frac{1}{y^s} dy.$$

The result now follows, in view of (7) and noting that, by Theorem 2, $f_{\mathbf{B}(t)}\left(\frac{x_1}{y}, \dots, \frac{x_s}{y}\right)$ coincides with a multivariate Dirichlet spline, $M_g\left(\frac{x_1}{y}, \dots, \frac{x_s}{y}; \delta_0, \dots, \delta_n; \alpha_0 t, \dots, \alpha_n t\right)$. \square

In case $\alpha_i t, i = 0, \dots, n$, are integers then $M_g(\cdot)$ is a classical multivariate polynomial simplex spline, given by Definition 3 and its evaluation can be successfully performed using e.g. Michelli's recurrence (23). When the multiplicities $\alpha_i t, i = 0, \dots, n$ are non-integer, to the best of our knowledge, the evaluation of multivariate Dirichlet splines has not been sufficiently explored. Recurrence formulas for the moments of multivariate Dirichlet splines and simplex splines have been established by Neuman (1994).

In order to provide some insight into the dependence properties of multivariate LG processes, next we give its underlying copula.

Proposition 7. The copula $C_{LG}(u_1, \dots, u_s)$, is given as

$$C_{LG}(u_1, \dots, u_s) = \int_{-\infty}^{F_{LG_1}^{-1}(u_1)} \dots \int_{-\infty}^{F_{LG_s}^{-1}(u_s)} \int_0^{+\infty} \frac{\lambda^{(\alpha_0+\dots+\alpha_n)t}}{\Gamma((\alpha_0 + \dots + \alpha_n) t)} y^{(\alpha_0+\dots+\alpha_n)t-(s+1)} e^{-\lambda y} M_g\left(\frac{x_1}{y}, \dots, \frac{x_s}{y}; \delta_0, \dots, \delta_n; \alpha_0 t, \dots, \alpha_n t\right) dy dx_s \dots dx_1, \tag{28}$$

where $u_i \in [0, 1]$, and

$$F_{LG_i}(x) = \int_{-\infty}^x \int_0^{+\infty} \frac{\lambda^{(\alpha_0+\dots+\alpha_n)t}}{\Gamma((\alpha_0 + \dots + \alpha_n) t)} y^{(\alpha_0+\dots+\alpha_n)t-2} e^{-\lambda y} M_g\left(\frac{x}{y}; \delta_{j,0}, \dots, \delta_{j,n}\right) dy dz, \tag{28}$$

$$i = 1, \dots, s.$$

Proof. Expression (28) follows from the Sklar's Theorem and expressions (26) and (6). \square

Let us note that the LG copula $C_{LG}(u_1, \dots, u_s)$ is related to the (new) class of the so-called Dirichlet (B-) spline copulas, introduced by Kaishev (2006 b). Both B-spline copulas and LG copulas are quite flexible, and by controlling the knots, Δ , of the Dirichlet spline, and their multiplicities, α , one can model and reproduce a wide range of dependence structures arising in financial applications. This is illustrated in section 4, on the example of multivariate FX modelling. For further results and applications of B-spline copulas see Kaishev (2006 b).

The next proposition gives the characteristic function of a multivariate LG process, which will be needed in order to develop a method of moments for estimating the LG parameters.

Proposition 8. The characteristic function, $\phi(\mathbf{z})$, of the multivariate LG process, $\mathbf{LG}(t) = (\mathbf{LG}_1(t), \dots, \mathbf{LG}_s(t))'$ given by Definition 2 is

$$\phi_{\mathbf{LG}}(\mathbf{z}) = \prod_{j=0}^n \left(\frac{\lambda}{\lambda - i(\boldsymbol{\delta}_j \cdot \mathbf{z})} \right)^{\alpha_j}, \quad (29)$$

where $\boldsymbol{\delta}_j = (\delta_{1,j}, \dots, \delta_{s,j})' \in \mathbb{R}^s$, $j = 0, \dots, n$, $\mathbf{z} = (z_1, \dots, z_s)' \in \mathbb{R}^s$ and $\lambda > 0$.

Proof. From Definition 2, for fixed t , say $t = 1$ and $\mathbf{z} = (z_1, \dots, z_s)' \in \mathbb{R}^s$, it is directly seen that the characteristic function

$$\begin{aligned} \phi_{\mathbf{LG}}(\mathbf{z}) &= \mathbb{E}\left[e^{i(\mathbf{z} \cdot \mathbf{LG}(t))}\right] = \mathbb{E}\left[e^{i\left(\sum_{j=0}^n \boldsymbol{\delta}_j \cdot \mathbf{z} G_j(t; \alpha_j, \lambda)\right)}\right] \\ &= \prod_{j=0}^n \mathbb{E}\left[e^{i \boldsymbol{\delta}_j \cdot \mathbf{z} G_j(t; \alpha_j, \lambda)}\right] = \prod_{j=0}^n \left(\frac{\lambda}{\lambda - i(\boldsymbol{\delta}_j \cdot \mathbf{z})} \right)^{\alpha_j}, \end{aligned}$$

which completes the proof of the asserted expression for $\phi_{\mathbf{LG}}(\mathbf{z})$. \square

In order to develop a method of moments for estimating the LG parameters, we will give here the moment generating function (mgf)

$$M_{\mathbf{LG}}(\mathbf{z}) = \mathbb{E}\left[e^{\mathbf{z} \cdot \mathbf{LG}(t)}\right] = \prod_{j=0}^n \left(\frac{\lambda}{\lambda - \boldsymbol{\delta}_j \cdot \mathbf{z}} \right)^{\alpha_j},$$

and the cumulant generating function (cgf)

$$K_{\mathbf{LG}}(\mathbf{z}) = \log M_{\mathbf{LG}}(\mathbf{z}) = \sum_{j=0}^n -\alpha_j \log \left(1 - \frac{1}{\lambda} \boldsymbol{\delta}_j \cdot \mathbf{z} \right) \quad (30)$$

of the LG random vector.

3.2 LG parameter estimation: method of moments

There are two sources of difficulty related to estimating the parameters of a multivariate LG process, given an appropriate data set. Firstly, it is the curse of dimensionality, i.e., the dimension s may be very high which is typically the case in some credit risk modelling applications. Secondly, the underlying dependence pattern may be rather complex, requiring significant number, $n + 1$ of knot parameters in each coordinate, and hence a large number of parameters overall.

Due to the latter difficulties, the calibration of a multivariate LG process, based on maximum likelihood estimation utilizing expression (26), is not so straightforward and may require, developing a special purpose optimization algorithm, using exhaustive numerical optimization methods such as, adapted simulated annealing. Development of such methods is outside our scope and will be a subject of another paper. Here we will develop a method of moments for the estimation of the LG parameters, which is simpler to implement and as will be illustrated in section 4, serves well the purpose of calibrating an FX model driven by a multivariate LG process.

In order to develop a method of moments for the estimation of LG parameters, we will need the following piece of general multivariate cumulant theory, provided by McCullagh (2008). In what follows we shall somewhat depart from the notation used so far and use the notationally convenient, Einstein's summation convention in order to denote scalar products. Thus, $z_r X_r$ denotes the linear combination $z_1 X_1 + \dots + z_s X_s$, where X_i , $i = 1, \dots, s$ are the coordinates of a random vector $X = (X_1, \dots, X_s)$. The square of a linear combination $(z_r X_r)^2 = (z_{r_1} X_{r_1})(z_{r_2} X_{r_2}) = z_{r_1} z_{r_2} X_{r_1} X_{r_2}$ is a sum of s^2 terms and for higher powers, $(z_r X_r)^l = z_{r_1} \dots z_{r_l} X_{r_1} \dots X_{r_l}$ is the sum of s^l terms. Following McCullagh (2008), we denote $\kappa_r = \mathbb{E}(X_r)$ the components of the mean vector, $\kappa_{r_1 r_2} = \mathbb{E}(X_{r_1} X_{r_2})$, $r_1, r_2 = 1, \dots, s$ the components of the matrix of second moments, $\kappa_{r_1 r_2 r_3} = \mathbb{E}(X_{r_1} X_{r_2} X_{r_3})$, $r_1, r_2, r_3 = 1, \dots, s$, the elements of the third moment matrix and so on, for the elements of the matrices of higher order moments. The Taylor expansions of the moment generating function, $M_X(\mathbf{z}) = \mathbb{E}[e^{z_r X_r}]$, and the cumulant generating function, $K_X(\mathbf{z}) = \log M_X(\mathbf{z})$, are then given as

$$M_X(\mathbf{z}) = 1 + z_{r_1} \kappa_{r_1} + \frac{1}{2!} z_{r_1} z_{r_2} \kappa_{r_1 r_2} + \frac{1}{3!} z_{r_1} z_{r_2} z_{r_3} \kappa_{r_1 r_2 r_3} + \dots$$

and

$$K_X(\mathbf{z}) = z_{r_1} \kappa_{r_1} + \frac{1}{2!} z_{r_1} z_{r_2} \kappa_{r_1, r_2} + \frac{1}{3!} z_{r_1} z_{r_2} z_{r_3} \kappa_{r_1, r_2, r_3} + \dots, \quad (31)$$

where κ_{r_1} denotes simultaneously first order moments and first order cumulants. The coefficients κ_{r_1, r_2} , κ_{r_1, r_2, r_3} , \dots in the expansion of $K_X(\mathbf{z})$ are the corresponding second third and higher order cumulants. Note that, the latter are distinguished notationally from the corresponding moments, $\kappa_{r_1 r_2}$, $\kappa_{r_1 r_2 r_3}$, \dots by the commas separating subscripts. Equating the coefficients in the expansion of

$$K_X(\mathbf{z}) = \log \left(1 + z_{r_1} \kappa_{r_1} + \frac{1}{2!} z_{r_1} z_{r_2} \kappa_{r_1 r_2} + \frac{1}{3!} z_{r_1} z_{r_2} z_{r_3} \kappa_{r_1 r_2 r_3} + \dots \right)$$

to the corresponding coefficients in the expansion (31), it can be seen that each of the moments $\kappa_{r_1 r_2}$, $\kappa_{r_1 r_2 r_3}$, \dots can be expressed, as a sum over partitions of the subscripts, where each term in the sum is a product of cumulants, as follows

$$\kappa_{r_1 r_2} = \kappa_{r_1, r_2} + \kappa_{r_1} \kappa_{r_2} \quad (32)$$

$$\begin{aligned} & \kappa_{r_1 r_2 r_3} = \\ & \kappa_{r_1, r_2, r_3} + \kappa_{r_1, r_2} \kappa_{r_3} + \kappa_{r_1, r_3} \kappa_{r_2} + \kappa_{r_2, r_3} \kappa_{r_1} + \kappa_{r_1} \kappa_{r_2} \kappa_{r_3} = \kappa_{r_1, r_2, r_3} + \kappa_{r_1, r_2} \kappa_{r_3} [3] + \kappa_{r_1} \kappa_{r_2} \kappa_{r_3} \end{aligned} \quad (33)$$

$$\kappa_{r_1 r_2 r_3 r_4} = \kappa_{r_1, r_2, r_3, r_4} + \kappa_{r_1, r_2, r_3} \kappa_{r_4} [4] + \kappa_{r_1, r_2} \kappa_{r_3, r_4} [3] + \kappa_{r_1, r_2} \kappa_{r_3} \kappa_{r_4} [6] + \kappa_{r_1} \kappa_{r_2} \kappa_{r_3} \kappa_{r_4}, \quad (34)$$

where the numbers in the square brackets indicate a sum over distinct partitions of the subscripts, having the same block sizes. Note that there are s equations $\kappa_{r_i} = \kappa_{r_i}$ relating the first order moments to the first order cumulants. In general, there are s^k equations for the moments of order $k = 1, 2, \dots$ however, there are only $\binom{s+k-1}{k}$ distinct equations which coincides with the number of distinct moments of order k . Equations, (32) - (34), have been given by McCullagh (2008). Here we further give the sets of equations, relating the fifth and the sixth order moments with the corresponding cumulants

$$\begin{aligned} \kappa_{r_1 r_2 r_3 r_4 r_5} = & \kappa_{r_1, r_2, r_3, r_4, r_5} + \kappa_{r_1, r_2, r_3, r_4} \kappa_{r_5} [5] + \kappa_{r_1, r_2, r_3} \kappa_{r_4, r_5} [10] + \\ & \kappa_{r_1, r_2, r_3} \kappa_{r_4} \kappa_{r_5} [5] + \kappa_{r_1, r_2} \kappa_{r_3, r_4} \kappa_{r_5} [15] + \kappa_{r_1, r_2} \kappa_{r_3} \kappa_{r_4} \kappa_{r_5} [10] + \kappa_{r_1} \kappa_{r_2} \kappa_{r_3} \kappa_{r_4} \kappa_{r_5}, \end{aligned} \quad (35)$$

$$\begin{aligned} \kappa_{r_1 r_2 r_3 r_4 r_5 r_6} = & \kappa_{r_1, r_2, r_3, r_4, r_5, r_6} + \kappa_{r_1, r_2, r_3, r_4, r_5} \kappa_{r_6} [6] + \\ & \kappa_{r_1, r_2, r_3, r_4} \kappa_{r_5, r_6} [15] + \kappa_{r_1, r_2, r_3, r_4} \kappa_{r_5} \kappa_{r_6} [15] + \kappa_{r_1, r_2, r_3} \kappa_{r_4, r_5, r_6} [10] + \\ & \kappa_{r_1, r_2, r_3} \kappa_{r_4, r_5} \kappa_{r_6} [60] + \kappa_{r_1, r_2, r_3} \kappa_{r_4} \kappa_{r_5} \kappa_{r_6} [20] + \kappa_{r_1, r_2} \kappa_{r_3, r_4} \kappa_{r_5, r_6} [15] + \\ & \kappa_{r_1, r_2} \kappa_{r_3, r_4} \kappa_{r_5} \kappa_{r_6} [45] + \kappa_{r_1, r_2} \kappa_{r_3} \kappa_{r_4} \kappa_{r_5} \kappa_{r_6} [15] + \kappa_{r_1} \kappa_{r_2} \kappa_{r_3} \kappa_{r_4} \kappa_{r_5} \kappa_{r_6}. \end{aligned} \quad (36)$$

In what follows we will derive expressions for the cumulants of the random vector $\mathbf{LG}(t)$, in terms of the unknown parameters, Δ , α , λ and n . By substituting these expressions in the right-hand side of equations (32)-(36) and equating the theoretical moments, κ_{r_1} , $\kappa_{r_1 r_2}$, $\kappa_{r_1 r_2 r_3}$, \dots to their corresponding empirical counterparts, one can solve the appropriate set of equations and obtain estimates of the unknown parameters. In what follows we will elaborate further on the details related to this method. The following proposition gives an expression for the cumulants of $\mathbf{LG}(t)$ in terms of the unknown parameters, Δ , α , λ and n .

Proposition 9. The cumulant, κ_{r_1, \dots, r_w} of the random vector $\mathbf{LG}(t)$ is

$$\kappa_{r_1, \dots, r_w} = (w-1)! \sum_{j=0}^n \frac{\alpha_j}{\lambda^w} \delta_{r_1, j} \delta_{r_2, j} \dots \delta_{r_w, j}, \quad (37)$$

where $w = 1, 2, \dots$, $r_i = 1, \dots, s$, $i = 1, \dots, w$.

Proof. The cgf of the random vector, $\mathbf{LG}(t)$ can be expressed as in (31). On the other hand, from (30), we have

$$\begin{aligned}
K_{\text{LG}}(\mathbf{z}) &= \sum_{j=0}^n \alpha_j \left(-\log \left(1 - \frac{1}{\lambda} \boldsymbol{\delta}_j \cdot \mathbf{z} \right) \right) \\
&= \sum_{j=0}^n \alpha_j \left(\frac{1}{\lambda} \boldsymbol{\delta}_j \cdot \mathbf{z} + \frac{1}{2} \left(\frac{1}{\lambda} \boldsymbol{\delta}_j \cdot \mathbf{z} \right)^2 + \frac{1}{3} \left(\frac{1}{\lambda} \boldsymbol{\delta}_j \cdot \mathbf{z} \right)^3 + \dots \right) \\
&= \sum_{j=0}^n \left(\left(\frac{\alpha_j}{\lambda} \boldsymbol{\delta}_j \right) \cdot \mathbf{z} + \frac{1}{2} \left(\left(\frac{\alpha_j^{1/2}}{\lambda} \boldsymbol{\delta}_j \right) \cdot \mathbf{z} \right)^2 + \frac{1}{3} \left(\left(\frac{\alpha_j^{1/3}}{\lambda} \boldsymbol{\delta}_j \right) \cdot \mathbf{z} \right)^3 + \dots \right) \\
&= \sum_{j=0}^n \left(\left(\frac{\alpha_j}{\lambda} \right) \delta_{r_1, j} z_{r_1} + \frac{1}{2} \left(\frac{\alpha_j^{1/2}}{\lambda} \right) \delta_{r_1, j} z_{r_1} \left(\frac{\alpha_j^{1/2}}{\lambda} \right) \delta_{r_2, j} z_{r_2} + \right. \\
&\quad \left. \frac{1}{3} \left(\frac{\alpha_j^{1/3}}{\lambda} \right) \delta_{r_1, j} z_{r_1} \left(\frac{\alpha_j^{1/3}}{\lambda} \right) \delta_{r_2, j} z_{r_2} \left(\frac{\alpha_j^{1/3}}{\lambda} \right) \delta_{r_3, j} z_{r_3} + \dots \right) \\
&= z_{r_1} \sum_{j=0}^n \left(\frac{\alpha_j}{\lambda} \right) \delta_{r_1, j} + \frac{1}{2!} z_{r_1} z_{r_2} \sum_{j=0}^n \left(\frac{\alpha_j^{1/2}}{\lambda} \right) \delta_{r_1, j} \left(\frac{\alpha_j^{1/2}}{\lambda} \right) \delta_{r_2, j} + \\
&\quad \frac{1}{3!} z_{r_1} z_{r_2} z_{r_3} 2! \sum_{j=0}^n \left(\frac{\alpha_j^{1/3}}{\lambda} \right) \delta_{r_1, j} \left(\frac{\alpha_j^{1/3}}{\lambda} \right) \delta_{r_2, j} \left(\frac{\alpha_j^{1/3}}{\lambda} \right) \delta_{r_3, j} + \dots
\end{aligned} \tag{38}$$

Hence, comparing the coefficients of the corresponding terms $z_{r_1}, z_{r_1} z_{r_2}, z_{r_1} z_{r_2} z_{r_3}, \dots$ in (31) and (38) we have

$$\begin{aligned}
\kappa_{r_1, \dots, r_w} &= (w-1)! \sum_{j=0}^n \left(\frac{\alpha_j^{1/w}}{\lambda} \right) \delta_{r_1, j} \left(\frac{\alpha_j^{1/w}}{\lambda} \right) \delta_{r_2, j} \dots \left(\frac{\alpha_j^{1/w}}{\lambda} \right) \delta_{r_w, j} \\
&= (w-1)! \sum_{j=0}^n \frac{\alpha_j}{\lambda^w} \delta_{r_1, j} \delta_{r_2, j} \dots \delta_{r_w, j},
\end{aligned}$$

which coincides with the asserted expression (37). \square

We can now use (37) in order to express the cumulants on the right hand side of equations (32)-(36) and therefore, express the theoretical moments, $\kappa^{r_1 \dots r_w}$ in terms of the unknown parameters, Δ, α, λ and n . Then, equate the theoretical moments, $\kappa_{r_1 \dots r_w}$ to their empirical counterparts and solve with respect to Δ, α, λ , assuming n is appropriately chosen. It will be instructive to make the definition of the moments, $\kappa_{r_1 \dots r_w}$ a bit more precise.

Definition 4. For $\boldsymbol{\beta} = (\beta_1, \dots, \beta_s)' \in \mathbb{N}^s$, define the moment, $\mathbb{E}(X_1^{\beta_1} X_2^{\beta_2} \dots X_s^{\beta_s})$, of order $|\boldsymbol{\beta}|$, ($|\boldsymbol{\beta}| = \beta_1 + \dots + \beta_s$) of the random vector $\mathbf{LG}(t)$ as

$$\mathbb{E}(X_1^{\beta_1} X_2^{\beta_2} \dots X_s^{\beta_s}) = \int_{\mathbb{R}^s} \mathbf{x}^{\boldsymbol{\beta}} f_{LG}(\mathbf{x}) d\mathbf{x} = \kappa_{r_1 \dots r_{\beta_1} r_{\beta_1+1} \dots r_{\beta_1+\beta_2} \dots r_{\beta_1+\dots+\beta_{s-1}+1} \dots r_{|\boldsymbol{\beta}|}},$$

where $\mathbf{x}^{\boldsymbol{\beta}} = x_1^{\beta_1} x_2^{\beta_2} \dots x_s^{\beta_s}$ and $r_1 = \dots = r_{\beta_1} = 1$, $r_{\beta_1+1} = \dots = r_{\beta_1+\beta_2} = 2$, \dots , $r_{\beta_1+\dots+\beta_{s-1}+1} = \dots = r_{|\boldsymbol{\beta}|} = s$.

The empirical moments of $\mathbf{LG}(t)$ can now be defined as follows.

Definition 5. For $\boldsymbol{\beta} = (\beta_1, \dots, \beta_s)' \in \mathbb{N}^s$, define the empirical moment $\hat{\kappa}_{r_1 \dots r_{|\boldsymbol{\beta}|}}$ of order $|\boldsymbol{\beta}|$, as

$$\hat{\kappa}_{r_1 \dots r_{|\boldsymbol{\beta}|}} = \frac{1}{N} \sum_{l=1}^N x_{1,l}^{\beta_1} \dots x_{s,l}^{\beta_s},$$

where $\{x_{1,l}, \dots, x_{s,l}\}_{l=1}^N$ is a sample of N i.i.d observations on $\mathbf{LG}(t)$.

In order to estimate the parameters $(\Delta, \alpha, \lambda)$, based on $\{x_{1,l}, \dots, x_{s,l}\}_{l=1}^N$, we apply the method of moments and solve

$$\left\{ \kappa_{r_1 \dots r_{|\boldsymbol{\beta}|}}(\Delta, \alpha, \lambda) = \hat{\kappa}_{r_1 \dots r_{|\boldsymbol{\beta}|}}, \quad |\boldsymbol{\beta}| = 1, 2, 3, \dots \right. \quad (39)$$

with respect to $(\Delta, \alpha, \lambda)$.

Remark 2. Note that there are $\binom{s+k-1}{k}$ distinct moments of order $|\boldsymbol{\beta}| = k = 1, 2, 3, \dots$. In an application, one would need to select the number of equations, p , in (39), to be equal to the number, $(s+1) \times (n+1) + 1$, of unknown parameters, $(\Delta, \alpha, \lambda)$, starting from moments of order 1 and increasing up to a maximum order k^* , where $k^* = \inf \left\{ k : p \leq \sum_{j=1}^k \binom{s+j-1}{j} \right\}$.

The method of moments described here is illustrated in section 4 on the example of FX modelling.

4 Modelling the joint dynamics of exchange rates

Let $S_1(t), S_2(t), \dots, S_s(t)$, $t \geq 0$, be the exchange rates of a set of s currencies against a common reference currency. We are interested in modelling the joint dynamics of $S_1(t), S_2(t), \dots, S_s(t)$, over a finite time interval $[0, T]$. We view $S_j(t)$, as the price of a risky asset with dynamics

$$S_j(t) = S_j(0) \exp \{X_j(t)\}, \quad j = 1, \dots, s,$$

where $X_j(t)$, $j = 1, \dots, s$ are the coordinates of an appropriate s -variate stochastic process driving the joint FX dynamics. In what follows we will compare and contrast the modelling results we obtain, under two alternative choices for the processes $X_j(t)$, $j = 1, \dots, s$, a multivariate VG model proposed by Luciano and Schoutens (2006) and a multivariate LG process, defined as in Definition 2.

In Fig. 3, we give the (historic) joint co-movement of the exchange rates of three currencies ($s = 3$), the Euro (EUR), the GB Pound (GBP) and the Japanese Yen (JPY) to the US Dollar as the reference (domestic) currency for the period 30.06.2008-30.06.2009.

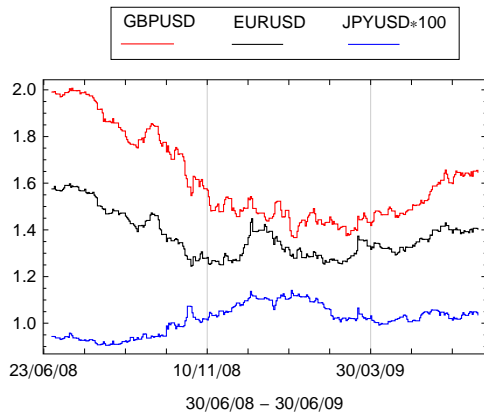


Fig. 3 Joint co-movement of the exchange rates of GBP/USD, EUR/USD, and JPY/USD, viewed from top to bottom.

As can be seen, examining Fig. 3 visually, there are different degrees of inter-dependence in the three FX trajectories. The exchange rates GBP/USD and EUR/USD exhibit stronger mutual correlation while at the same time, each of them is less correlated with the JPY/USD exchange rate. This is confirmed also if one analyses Fig. 4-5 which provide scatter plots and histograms of the corresponding log returns at unit time intervals, $\ln(S_j(t)/S_j(t-1))$, $t = 1, 2, \dots$ given by

$$\ln(S_j(t)/S_j(t-1)) = X_j(t) - X_j(t-1) \stackrel{d}{=} X_j.$$

Examining Fig. 5 one can see that the (marginal) distributions of the corresponding (historic) daily log returns seem to exhibit heavier tails than in the normal case, which is a bit more expressed for the EUR/USD and JPY/USD. As has been noted by Daal and Madan (2005), a univariate VG density is an appropriate choice for fitting empirical FX data.

The two dimensional scatter plots of the three pairs of log returns given in Fig. 4, show that the pair GBP/USD versus EUR/USD exhibits positive dependence with stronger upper tail dependence, the pair JPY/USD versus EUR/USD looks evenly scattered around the origin, while the pair JPY/USD versus GBP/USD looks somewhat negatively correlated.

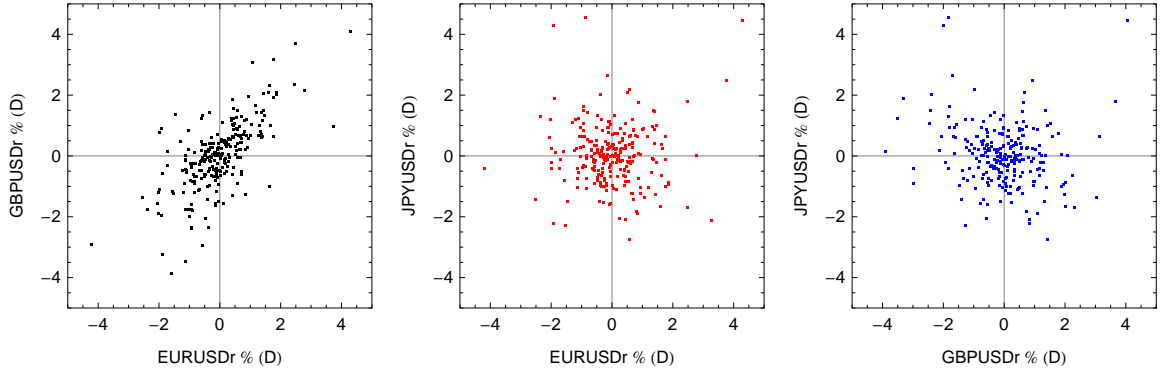


Fig. 4 Bilateral scatter plots of the empirical log returns EUR/USD, GBP/USD and JPY/USD.

First, we model the co-movement of the three FX rates, EUR/USD, GBP/USD and JPY/USD, indexed by $j = 1, 2, 3$ respectively, applying the multivariate VG process, proposed by Luciano and Schoutens (2006), as follows

$$S_j(t) = S_j(0) \exp \left\{ m_j t + B \left(G \left(t; \frac{1}{\nu}, \frac{1}{\nu} \right); \theta_j, \sigma_j \right) \right\} = S_j(0) \exp \{ m_j t + \text{VG}_j(t; \theta_j, \sigma_j, \nu) \},$$

where $B(G(t; \frac{1}{\nu}, \frac{1}{\nu}); \theta_j, \sigma_j)$ is a Brownian motion with drift θ_j and volatility σ_j , for the j -th currency, $j = 1, 2, 3$, and $G(t; \frac{1}{\nu}, \frac{1}{\nu})$ is a common Gamma process with mean rate 1 and variance rate ν , and m_j is a drift parameter. Obviously, there are 10 unknown parameters in total in this model and this is the maximum possible number of parameters for a three dimensional application ($s = 3$). Denote by $Z_j = \ln(S_j(t)/S_j(t-1))$ the corresponding log returns. Then, it is not difficult to see that the joint density of the log returns for the three currencies is given as

$$f_{Z_1, Z_2, Z_3}(z_1, z_2, z_3) = \int_0^\infty \frac{\nu^{-1/\nu}}{\Gamma(1/\nu)} y^{(1/\nu-1)} e^{-\frac{y}{\nu}} \prod_{j=1}^3 \frac{1}{\sigma_j \sqrt{y}} \varphi \left(\frac{z_j - m_j - \theta_j y}{\sigma_j \sqrt{y}} \right) dy. \quad (40)$$

where $\varphi(\cdot)$ is the standard normal pdf. In order to calibrate the three dimensional Luciano and Schoutens (2006) VG model, we have fixed $\nu = 1$ and have used the method of maximum likelihood in order to estimate the unknown parameters, m_j, θ_j, σ_j $j = 1, 2, 3$. In Fig. 5, we give the histograms of (historic) daily log returns and fitted marginal $\text{VG}_j(t; \theta_j, \sigma_j, \nu)$ densities and, as can be seen, they fit reasonably well the data.

In Fig. 6 we give the two dimensional scatter plots simulated from the corresponding fitted three dimensional VG distributions. As can be seen from Fig 6 if one compares it with the corresponding empirical scatter plots of Fig 4, the 10 parameter, Luciano and Schoutens (2006) model fails to capture the underlying dependence in the data, especially for the EUR/USD, GBP/USD pair of currencies.

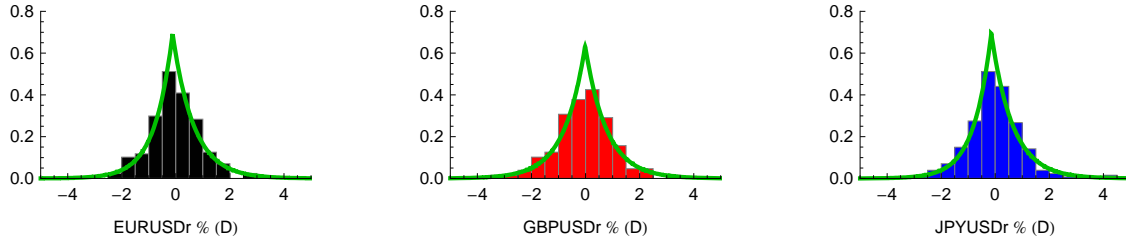


Fig. 5 Marginal VG densities fitted to (histograms of) historic daily log returns of the exchange rates of EUR/USD, GBP/USD and JPY/USD.

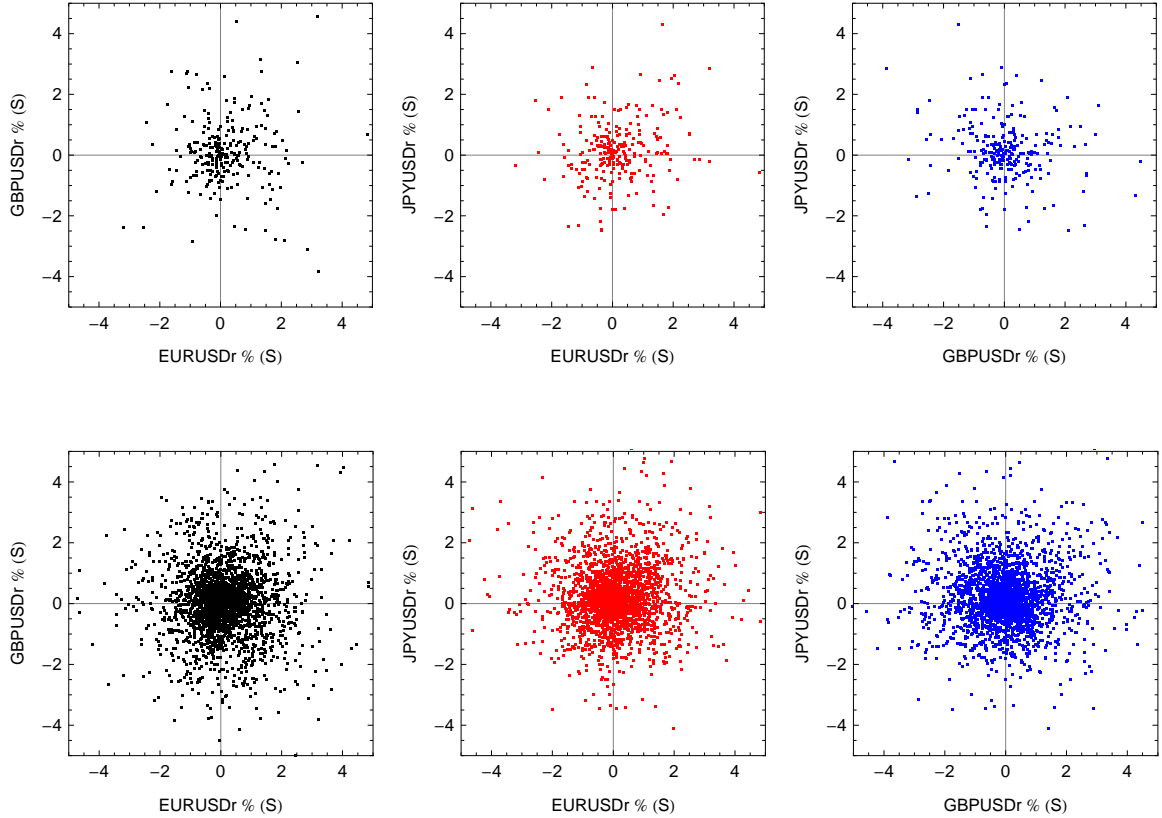


Fig. 6 Bilateral scatter plots of the simulated three dimensional VG log returns EUR/USD, GBP/USD and JPY/USD, upper panel: 254 simulated data points; lower panel: 2540 simulated data points.

Secondly, we model the co-movement of the three FX rates, EUR/USD, GBP/USD and JPY/USD, applying the multivariate LG process, proposed in this paper, as follows

$$S_j(t) = S_j(0) \exp(\text{LG}_j(t; \delta_{j,0}, \dots, \delta_{j,n}, \alpha, \lambda, n)), \quad (41)$$

where $j = 1, 2, 3$, $n = 3$, $\lambda = 1$, $\alpha = \{1, 1, 1, 1\}$ and $\delta_{j,0}, \dots, \delta_{j,n}$, are the 12 knot parameters. Note that 12 is the minimum possible number of knot parameters, since four is the minimum number of knots which span a volume in \mathbb{R}^3 ($s = 3$). For the purpose of estimating, $\delta_{j,0}, \dots, \delta_{j,3}$, $j = 1, 2, 3$, we consider the joint distribution of the corresponding log returns, Z_j , $j = 1, 2, 3$, which is a three dimensional LG distribution.

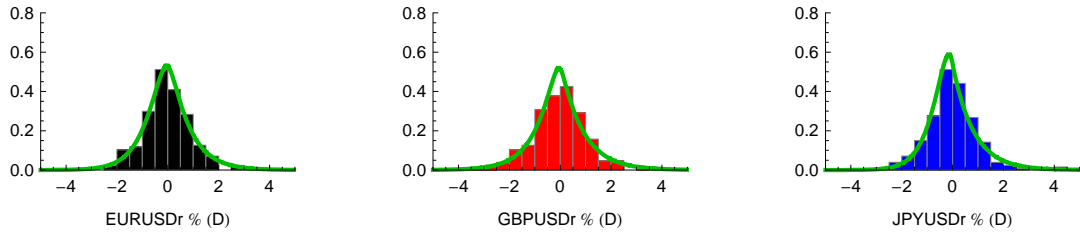


Fig. 7 Marginal LG densities fitted to (histograms of) historic daily log returns of the exchange rates of EUR/USD, GBP/USD and JPY/USD.

We have used the method of moments, developed in section 3.2, in order to estimate $\delta_{j,i}$, $j = 1, 2, 3$, $i = 0, 1, 2, 3$, by equating the first, second and third order theoretical moments, κ_{r_1} , $r_1 = 1, 2, 3$, $\kappa_{r_1 r_2}$, $r_1 = 1, 2, 3$, $r_2 = 1, 2, 3$, $r_1 < r_2$, $\kappa_{r_1 r_2 r_3}$, $r_1 = r_2 = r_3 = 1, 2, 3$, of the random vector (Z_1, Z_2, Z_3) , given by (32) and (33), to their empirical counterparts, following (39).

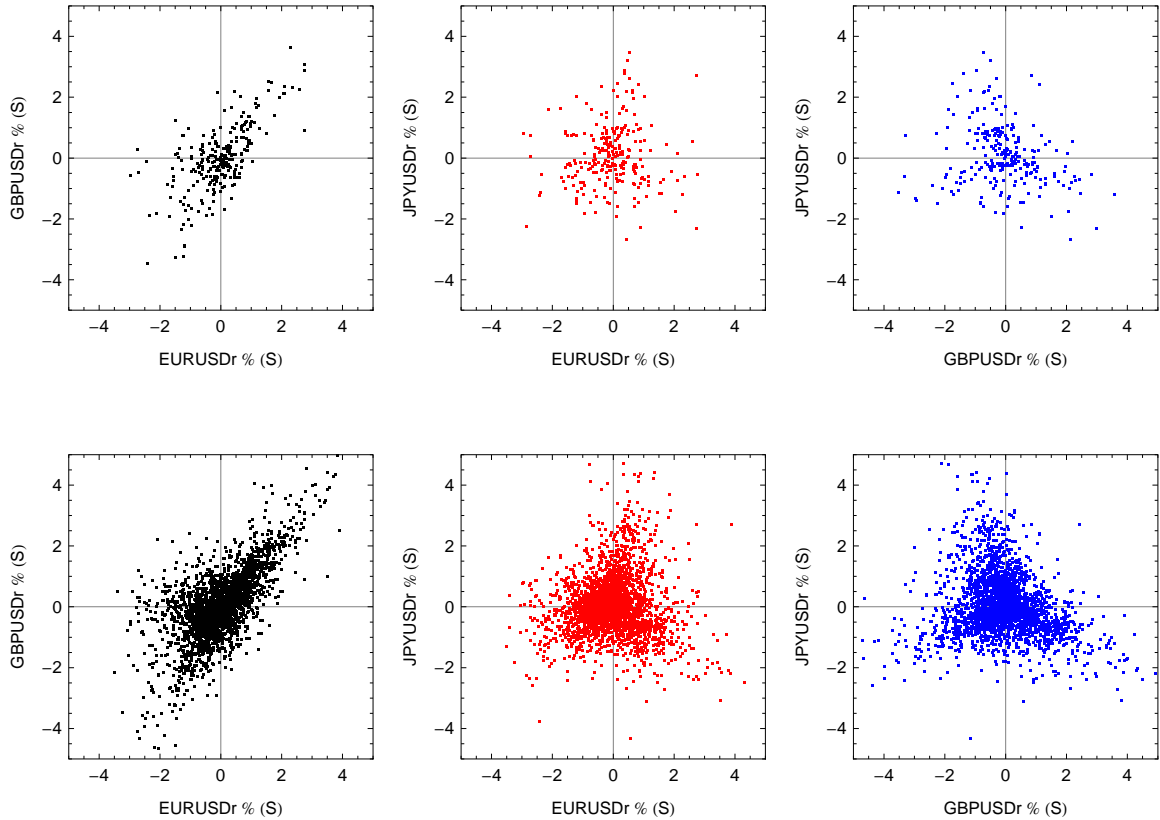


Fig. 8 Bilateral scatter plots of the simulated LG log returns EUR/USD, GBP/USD and JPY/USD, upper panel: 254 simulated data points, lower panel: 2540 simulated data points.

In Fig. 8, we give the two dimensional scatter plots simulated from the corresponding fitted three dimensional LG distributions.

Comparing the scatter plots from Fig. 8 with the corresponding empirical scatter plots of Fig. 4, the 12 parameter, LG model captures the underlying dependence in the data, both for GBP/USD, EUR/USD and GBP/USD, JPY/USD pairs of exchange rates. As can be seen from Fig. 8, the multivariate LG vector can take any value in \mathbb{R}^3 but the scatter plots reveal a triangular shape inherited from the domain of the three dimensional Dirichlet spline, namely the pyramid configuration defined by its four knots, δ_j , $j = 0, 1, 2, 3$ in \mathbb{R}^3 . In contrast to the Luciano and Schoutens (2006) VG model, for which the number of parameters is limited to a max of 10, it is possible to increase the number of LG parameters, say to six knots δ_j $j = 0, 1, 2, 3, 4, 5$ and use the method of moments in order to get a better estimate of the underlying dependence structure.

In Fig. 9, we give sample paths simulated from the three dimensional LG model (41) which illustrates the higher correlation between the EUR/USD and GBP/USD which has also been empirically observed (see Fig. 3).

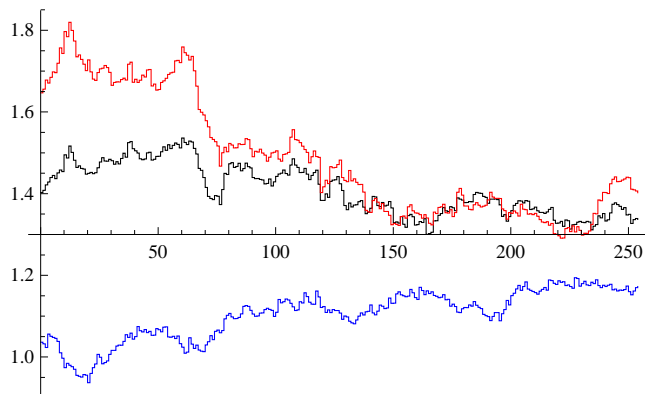


Fig. 9 Joint co-movement of the exchange rates of EUR/USD, GBP/USD and JPY/USD simulated from the LG model.

5 Comments and conclusions

The proposed (univariate) LG process is a more flexible generalization of the well-known VG process and the BG process since it allows to use any number of parameters according to the requirements of a particular application and control both the positive and the negative parts of the corresponding Lévy measure.

An enlightening link between the LG distribution, and (univariate) B-splines and Dirichlet splines is established and alternative formulas for the density of the VG and BG are given. The use of a LG process, as the driver of a stock price dynamics, in pricing exotic options and participating life insurance contracts is briefly indicated.

The proposed multivariate generalization of the LG process is very flexible, since it allows to incorporate any required number of parameters and to model complex dependence patterns between asset price processes. It is a competitive alternative to multivariate Lévy copulas and other multivariate generalizations of the VG process, based for instance, on a common random time change in a multivariate Brownian motion.

We have also explored some of the properties of multivariate LG processes in terms of multivariate simplex B-splines and Dirichlet splines. In particular, we have given explicit expressions of the joint LG density and the underlying LG copula function in terms of Dirichlet splines, and also the LG characteristic, moment and cumulant generating functions. The latter have been used in section 3.2 to develop, a reasonably simple method of moments, based on their relation to cumulants, for the purpose of calibrating the LG model parameters.

We have also illustrated the modelling power of a multivariate LG process on the example of FX modelling of the exchange rates of three currencies, the EUR the GBP and the JPY to the US Dollar. Results demonstrate that in contrast to the three dimensional, 10 parameter VG model, proposed by Luciano and Schoutens (2006), the three dimensional, 12 parameter LG model, captures better the different (bilateral) patterns of dependence between the FX rates of the three currencies although there is still scope to improve its performance by introducing additional parameters.

Ongoing research is related to exploring market consistent LG parameter calibration and properties of the LG copula, which is a new promising member of the relatively limited family of multivariate copulas, richly enough parametrized so as to capture complex dependence patterns in truly multivariate financial and insurance applications. It is worth mentioning that yet another new class of copulas, related to the LG copulas, called Dirichlet (B-) spline copulas have been proposed and explored by Kaishev (2006b).

Acknowledgements

The author would like to thank Dimitrina Dimitrova for her invaluable help in developing the *Mathematica* implementation and the numerical validation of the LG and VG models of Section 4 and for carefully reading the draft of the paper which lead to numerous corrections and notational improvements. The author is also indebted to Zvetan Ignatov for his constructive comments and remarks which helped improve the paper.

Earlier versions of this paper have been presented at the QMF 2006 conference in Sydney (see Kaishev 2006 a) and also at the King's College Financial Mathematics and Applied Probability Seminars, December 2009. The author extends his thanks to the participants of these events, for their useful feedback.

References

Abramowitz, M. and Stegun, I. A. (1972). *Handbook of mathematical functions*. Dover Publications, New York.

De Boor, C. (1976). Splines as linear combinations of B-splines. A survey. In *Approximation Theory II*, edited by G.G. Lorentz, C.K. Chui, and L.L. Schumaker, 1-47, New York: Academic Press, 1976.

- De Boor, C. (2001). *A practical guide to splines*. Springer, New York.
- zu Castell, W. (2002). Dirichlet splines as fractional integrals of B-splines. *Rocky Mountain Journal of Mathematics* **32** (2), 545-559.
- Cont, R. and Tankov, P. (2004). *Financial Modelling with Jump processes*. Chapman and Hall, London.
- Cohen, E., Riesenfeld, R. F., Elber G. (2001) *Geometric Modelling with Splines*. A. K. Peters, Natick, Massachusetts.
- Daal, E. A. and Madan, D. B. (2005). An empirical examination of the variance-gamma model for foreign currency options. *Journal of Business* **78**, 2121-2152.
- Dickson, D. C. M. and Waters, H. R. (1993). Gamma processes and finite time survival probabilities. *ASTIN Bul.* **23**, 2, 259-272.
- Dufresne, F. Gerber, H. U. and Shiu, E. S. W. (1991) Risk Theory with the Gamma Process. *ASTIN Bul.* **21**, 2, 177-192.
- Fu, M. (2007). Variance Gamma and Monte Carlo. In: M.C. Fu, R. A. Jarrow, J. J. Elliott, eds. *Advances in Mathematical Finance*. Birkhäuser, Boston, 21-35.
- Ignatov, Z. G. and Kaishev, V. K. (1985). B-splines and linear combinations of uniform order statistics. Math. Research Cent. TSR, 2817, Univ. of Wisconsin Madison.
- Ignatov, Z.G. and Kaishev, V. K. (1987). Multivariate B-splines, analysis of contingency tables and serial correlation. In: P. Bauer et al. (eds) *Mathematical Statistics and Probability Theory, Vol. B.*, D. Reidel Publ. Co., Dordrecht, Holland, 125-137.
- Ignatov, Z. G. and Kaishev, V. K. (1988). Some properties of generalized B-splines. *Proc. Conf. Constructive Theory of Functions*, Varna 1987, Sofia Publ. House of the Bulg. Acad. Of Sci. 233-241.
- Ignatov, Z. G. and Kaishev, V. K. (1989). A probabilistic interpretation of multivariate B-splines and some applications. *SERDICA Bulgaricae mathematicae publicationes*, **15**, 91-99.
- Kaishev, V. K. (1991). A Gaussian Cubature Formula for the Computation of Generalized B-splines and its Application to Serial Correlation. *Contemporary Mathematics*, **115**, 219-237.
- Kaishev, V. K. (2006 a). On B-spline Related Stochastic Processes and Some Applications in Finance and Insurance. Paper presented at the *Quantitative Methods in Finance (QMF) conference*, Sydney, Australia, 13-16 December 2006.
- Kaishev, V. K. (2006 b). Copulas induced by the Dirichlet Distribution and B-splines. Paper presented at the *Insight into Risk: Research Showcase*, Cass Business School, London 21 June 2006, *Faculty of Actuarial Science and Insurance Seminar*, Cass Business School, London 23 May 2007, and at the *Workshop on Copula Theory and its Applications*, Faculty of Mathematics, Informatics, and Mechanics, University of Warsaw, Poland, 25-26 September 2009.

- Kaishev, V. K. and Dimitrova, D. S. (2009). Dirichlet Bridge Sampling for the Variance Gamma Process: Pricing Path-Dependent Options. *Management Science*, **55**, 3, 2009, 483–496.
- Karlin, S., Micchelli, C.A. and Rinott, Y. (1986). Multivariate Splines: A probabilistic perspective. *J. Multiv. Anal.* **20**, 69-90.
- Küchler, U. and Tappe, S. (2008). Bilateral gamma distributions and processes in financial mathematics. *Stoch. Process and their Applications*, **118** (2) 261-283.
- Luciano, E. and Schoutens, W. (2006). A multivariate jump driven financial asset model. *Quantitative Finance*, **6**, 385-402.
- Luciano, E. and Semeraro, P. (2007). Extending time-changed Lévy asset models through multivariate subordinators, working paper, Collegio Carlo Alberto.
- Madan, D. and Seneta, E. (1990). The variance gamma model for share market returns. *Journal of Business* **63**, 511-524.
- Madan, D., Carr, P. and Chang, E. (1998). The variance gamma process and option pricing. *European Finance Review*. **2**, 79-105.
- McCullagh, P. (2008). Cumulants. In: *Lecture notes for Statistical models (Stat306)*. Department of Statistics, University of Chicago. Available at: <http://www.stat.uchicago.edu/~pmcc/courses/stat306/cumulants.pdf> (16/05/2010)
- Micchelli, C. A. (1980). A constructive approach to Kergin interpolation in \mathbb{R}^k : multivariate B-splines and Lagrange interpolation, *Rocky Mountain Journal of Mathematics* **10**, 485-497.
- Moschopoulos, P. G. (1985). The distribution of the sum of independent gamma random variables. *Annals of the Institute of Statistical Mathematics* **37**, 541-544.
- Neamtu, M. (2001). What is the Natural Generalization of Univariate Splines to Higher Dimensions? In: T. Lyche and L. L. Schumaker (eds.) *Mathematical methods for curves and surfaces*. Oslo 2000, Vanderbilt University Press, Nashville TN, 355-392.
- Neuman, E. (1994). Moments of Dirichlet splines and their applications to hypergeometric functions, *J. Comp. Appl. Math.* **55** 225-241.
- Prautzsch, H., Boehm, W. Paluszny, M. (2002) *Bézier and B-spline Techniques*. Springer Berlin.
- Schoutens, W. and Cariboni, J. (2009). *Levy Processes in Credit Risk*. Wiley, Chichester.
- Schumaker, L. L. (1981). *Spline Functions: Basic Theory*. John Wiley & Sons, New York
- Semeraro, P. (2008). A Multivariate Variance Gamma Model for Financial Applications. *International Journal of Theoretical and Applied Finance* **11**, 1, 1-18.

Stein, H. A., Hogan, P. and Carr, P. (2007). Time for a change: The Variance Gamma model and option pricing. Working paper, Bloomberg Financial Markets, New York, <http://ssrn.com/abstract=956625>

Sukhatme, P. V. (1937). Tests of significance for samples of the chi-square population with two degrees of freedom. *Ann. Eugen* **8**, 52-56.

Wilks, S. S. (1962). *Mathematical Statistics*. Wiley, New York.

Yor, M. (2007). Some remarkable properties of gamma processes. In: M.C. Fu, R. A. Jarrow, J.J. Elliott, eds. *Advances in mathematical Finance*. Birkhäuser, Boston, 37-47.



FACULTY OF ACTUARIAL SCIENCE AND INSURANCE

Actuarial Research Papers since 2001

Report Number	Date	Publication Title	Author
160.	January 2005	Mortality Reduction Factors Incorporating Cohort Effects. ISBN 1 90161584 7	Arthur E. Renshaw Steven Haberman
161.	February 2005	The Management of De-Cumulation Risks in a Defined Contribution Environment. ISBN 1 901615 85 5.	Russell J. Gerrard Steven Haberman Elena Vigna
162.	May 2005	The IASB Insurance Project for Life Insurance Contracts: Impact on Reserving Methods and Solvency Requirements. ISBN 1-901615 86 3.	Laura Ballotta Giorgia Esposito Steven Haberman
163.	September 2005	Asymptotic and Numerical Analysis of the Optimal Investment Strategy for an Insurer. ISBN 1-901615-88-X	Paul Emms Steven Haberman
164.	October 2005.	Modelling the Joint Distribution of Competing Risks Survival Times using Copula Functions. ISBN 1-901615-89-8	Vladimir Kaishev Dimitrina S, Dimitrova Steven Haberman
165.	November 2005.	Excess of Loss Reinsurance Under Joint Survival Optimality. ISBN1-901615-90-1	Vladimir K. Kaishev Dimitrina S. Dimitrova
166.	November 2005.	Lee-Carter Goes Risk-Neutral. An Application to the Italian Annuity Market. ISBN 1-901615-91-X	Enrico Biffis Michel Denuit
167.	November 2005	Lee-Carter Mortality Forecasting: Application to the Italian Population. ISBN 1-901615-93-6	Steven Haberman Maria Russolillo
168.	February 2006	The Probationary Period as a Screening Device: Competitive Markets. ISBN 1-901615-95-2	Jaap Spreeuw Martin Karlsson
169.	February 2006	Types of Dependence and Time-dependent Association between Two Lifetimes in Single Parameter Copula Models. ISBN 1-901615-96-0	Jaap Spreeuw
170.	April 2006	Modelling Stochastic Bivariate Mortality ISBN 1-901615-97-9	Elisa Luciano Jaap Spreeuw Elena Vigna.
171.	February 2006	Optimal Strategies for Pricing General Insurance. ISBN 1901615-98-7	Paul Emms Steve Haberman Irene Savoulli
172.	February 2006	Dynamic Pricing of General Insurance in a Competitive Market. ISBN1-901615-99-5	Paul Emms
173.	February 2006	Pricing General Insurance with Constraints. ISBN 1-905752-00-8	Paul Emms
174.	May 2006	Investigating the Market Potential for Customised Long Term Care Insurance Products. ISBN 1-905752-01-6	Martin Karlsson Les Mayhew Ben Rickayzen

Report Number	Date	Publication Title	Author
175.	December 2006	Pricing and Capital Requirements for With Profit Contracts: Modelling Considerations. ISBN 1-905752-04-0	Laura Ballotta
176.	December 2006	Modelling the Fair Value of Annuities Contracts: The Impact of Interest Rate Risk and Mortality Risk. ISBN 1-905752-05-9	Laura Ballotta Giorgia Esposito Steven Haberman
177.	December 2006	Using Queuing Theory to Analyse Completion Times in Accident and Emergency Departments in the Light of the Government 4-hour Target. ISBN 978-1-905752-06-5	Les Mayhew David Smith
178.	April 2007	In Sickness and in Health? Dynamics of Health and Cohabitation in the United Kingdom. ISBN 978-1-905752-07-2	Martin Karlsson Les Mayhew Ben Rickayzen
179.	April 2007	GeD Spline Estimation of Multivariate Archimedean Copulas. ISBN 978-1-905752-08-9	Dimitrina Dimitrova Vladimir Kaishev Spiridon Penev
180.	May 2007	An Analysis of Disability-linked Annuities. ISBN 978-1-905752-09-6	Ben Rickayzen
181.	May 2007	On Simulation-based Approaches to Risk Measurement in Mortality with Specific Reference to Poisson lee-Carter Modelling. ISBN 978-1-905752-10-2	Arthur Renshaw Steven Haberman
182.	July 2007	High Dimensional Modelling and Simulation with Asymmetric Normal Mixtures. ISBN 978-1-905752-11-9	Andreas Tsanakas Andrew Smith
183.	August 2007	Intertemporal Dynamic Asset Allocation for Defined Contribution Pension Schemes. ISBN 978-1-905752-12-6	David Blake Douglas Wright Yumeng Zhang
184.	October 2007	To split or not to split: Capital allocation with convex risk measures. ISBN 978-1-905752-13-3	Andreas Tsanakas
185.	April 2008	On Some Mixture Distribution and Their Extreme Behaviour. ISBN 978-1-905752-14-0	Vladimir Kaishev Jae Hoon Jho
186.	October 2008	Optimal Funding and Investment Strategies in Defined Contribution Pension Plans under Epstein-Zin Utility. ISBN 978-1-905752-15-7	David Blake Douglas Wright Yumeng Zhang
187.	May 2008	Mortality Risk and the Valuation of Annuities with Guaranteed Minimum Death Benefit Options: Application to the Italian Population. ISBN 978-1-905752-16-4	Steven Haberman Gabriella Piscopo
188.	January 2009	The Market Potential for Privately Financed Long Term Care Products in the UK. ISBN 978-1-905752-19-5	Leslie Mayhew
189.	June 2009	Whither Human Survival and Longevity or the Shape of things to Come. ISBN 978-1-905752-21-8	Leslie Mayhew David Smith
190	October 2009	ilc: A Collection of R Functions for Fitting a Class of Lee Carter Mortality Models using Iterative fitting Algorithms* ISBN 978-1-905752-22-5	Zoltan Butt Steven Haberman
191.	October 2009	Decomposition of Disease and Disability Life Expectancies in England, 1992-2004. ISBN 978-1-905752-23-2	Domenica Rasulo Leslie Mayhew Ben Rickayzen

Report Number	Date	Publication Title	Author
192.	October 2009	Exploration of a Novel Bootstrap Technique for Estimating the Distribution of Outstanding Claims Reserves in General Insurance. ISBN 978-1-905752-24-9	Robert Cowell
193.	January 2010	Surplus Analysis for Variable Annuities with a GMDB Option. ISBN 978-1-905752-25-6	Steven Haberman Gabriella Piscopo
194.	January 2010	UK State Pension Reform in a Public Choice Framework. ISBN 978-1-905752-26-3	Philip Booth
195.	June 2010	Stochastic processes induced by Dirichlet (B-) splines: modelling multivariate asset price dynamics. ISBN 978-1-905752-28-7	Vladimir Kaishev

Statistical Research Papers

1.	December 1995.	Some Results on the Derivatives of Matrix Functions. ISBN 1 874 770 83 2	P. Sebastiani
2.	March 1996	Coherent Criteria for Optimal Experimental Design. ISBN 1 874 770 86 7	A.P. Dawid P. Sebastiani
3.	March 1996	Maximum Entropy Sampling and Optimal Bayesian Experimental Design. ISBN 1 874 770 87 5	P. Sebastiani H.P. Wynn
4.	May 1996	A Note on D-optimal Designs for a Logistic Regression Model. ISBN 1 874 770 92 1	P. Sebastiani R. Settini
5.	August 1996	First-order Optimal Designs for Non Linear Models. ISBN 1 874 770 95 6	P. Sebastiani R. Settini
6.	September 1996	A Business Process Approach to Maintenance: Measurement, Decision and Control. ISBN 1 874 770 96 4	Martin J. Newby
7.	September 1996.	Moments and Generating Functions for the Absorption Distribution and its Negative Binomial Analogue. ISBN 1 874 770 97 2	Martin J. Newby
8.	November 1996.	Mixture Reduction via Predictive Scores. ISBN 1 874 770 98 0	Robert G. Cowell.
9.	March 1997.	Robust Parameter Learning in Bayesian Networks with Missing Data. ISBN 1 901615 00 6	P. Sebastiani M. Ramoni
10.	March 1997.	Guidelines for Corrective Replacement Based on Low Stochastic Structure Assumptions. ISBN 1 901615 01 4.	M.J. Newby F.P.A. Coolen
11.	March 1997	Approximations for the Absorption Distribution and its Negative Binomial Analogue. ISBN 1 901615 02 2	Martin J. Newby
12.	June 1997	The Use of Exogenous Knowledge to Learn Bayesian Networks from Incomplete Databases. ISBN 1 901615 10 3	M. Ramoni P. Sebastiani
13.	June 1997	Learning Bayesian Networks from Incomplete Databases. ISBN 1 901615 11 1	M. Ramoni P. Sebastiani
14.	June 1997	Risk Based Optimal Designs. ISBN 1 901615 13 8	P. Sebastiani

15.	June 1997.	Sampling without Replacement in Junction Trees. ISBN 1 901615 14 6	H.P. Wynn Robert G. Cowell
Report Number	Date	Publication Title	Author
16.	July 1997	Optimal Overhaul Intervals with Imperfect Inspection and Repair. ISBN 1 901615 15 4	Richard A. Dagg Martin J. Newby
17.	October 1997	Bayesian Experimental Design and Shannon Information. ISBN 1 901615 17 0	P. Sebastiani. H.P. Wynn
18.	November 1997.	A Characterisation of Phase Type Distributions. ISBN 1 901615 18 9	Linda C. Wolstenholme
19.	December 1997	A Comparison of Models for Probability of Detection (POD) Curves. ISBN 1 901615 21 9	Wolstenholme L.C
20.	February 1999.	Parameter Learning from Incomplete Data Using Maximum Entropy I: Principles. ISBN 1 901615 37 5	Robert G. Cowell
21.	November 1999	Parameter Learning from Incomplete Data Using Maximum Entropy II: Application to Bayesian Networks. ISBN 1 901615 40 5	Robert G. Cowell
22.	March 2001	FINEX : Forensic Identification by Network Expert Systems. ISBN 1 901615 60X	Robert G.Cowell
23.	March 2001.	Wren Learning Bayesian Networks from Data, using Conditional Independence Tests is Equivalent to a Scoring Metric ISBN 1 901615 61 8	Robert G Cowell
24.	August 2004	Automatic, Computer Aided Geometric Design of Free-Knot, Regression Splines. ISBN 1-901615-81-2	Vladimir K Kaishev, Dimitrina S.Dimitrova, Steven Haberman Richard J. Verrall
25.	December 2004	Identification and Separation of DNA Mixtures Using Peak Area Information. ISBN 1-901615-82-0	R.G.Cowell S.L.Lauritzen J Mortera,
26.	November 2005.	The Quest for a Donor : Probability Based Methods Offer Help. ISBN 1-90161592-8	P.F.Mostad T. Egeland., R.G. Cowell V. Bosnes Ø. Braaten
27.	February 2006	Identification and Separation of DNA Mixtures Using Peak Area Information. (Updated Version of Research Report Number 25). ISBN 1-901615-94-4	R.G.Cowell S.L.Lauritzen J Mortera,
28.	October 2006	Geometrically Designed, Variable Knot Regression Splines : Asymptotics and Inference. ISBN 1-905752-02-4	Vladimir K Kaishev Dimitrina S.Dimitrova Steven Haberman Richard J. Verrall

Report Number	Date	Publication Title	Author
29.	October 2006	Geometrically Designed, Variable Knot Regression Splines : Variation Diminishing Optimality of Knots. ISBN 1-905752-03-2	Vladimir K Kaishev Dimitrina S.Dimitrova Steven Haberman Richard J. Verrall
30.	November 2008	Scheduling Reentrant Jobs on Parallel Machines with a Remote Server. ISBN 978-1-905752-18-8	Konstantin Chakhlevitch Celia Glass
31.	November 2009	Probabilistic Expert Systems for Handling Artifacts in Complex DNA Mixtures. ISBN 978-1-905752-27-0	R.G.Cowell S.L. lauritzen J. Mortera

Papers can be downloaded from

<http://www.cass.city.ac.uk/facact/research/publications.html>

Faculty of Actuarial Science and Insurance

Cass Business School

Copyright 2010 © Faculty of Actuarial Science and Insurance,
Cass Business School
106 Bunhill Row,
London EC1Y 8TZ.

ISBN 978-1-905752-28-7