

Haberman, S., Butt, Z. & Rickayzen, B. D. (2001). Multiple state models, simulation and insurer insolvency (Report No. Actuarial Research Paper No. 136). London, UK: Faculty of Actuarial Science & Insurance, City University London.



**CITY UNIVERSITY
LONDON**

[City Research Online](#)

Original citation: Haberman, S., Butt, Z. & Rickayzen, B. D. (2001). Multiple state models, simulation and insurer insolvency (Report No. Actuarial Research Paper No. 136). London, UK: Faculty of Actuarial Science & Insurance, City University London.

Permanent City Research Online URL: <http://openaccess.city.ac.uk/2273/>

Copyright & reuse

City University London has developed City Research Online so that its users may access the research outputs of City University London's staff. Copyright © and Moral Rights for this paper are retained by the individual author(s) and/ or other copyright holders. All material in City Research Online is checked for eligibility for copyright before being made available in the live archive. URLs from City Research Online may be freely distributed and linked to from other web pages.

Versions of research

The version in City Research Online may differ from the final published version. Users are advised to check the Permanent City Research Online URL above for the status of the paper.

Enquiries

If you have any enquiries about any aspect of City Research Online, or if you wish to make contact with the author(s) of this paper, please email the team at publications@city.ac.uk.

**Multiple State Models, Simulation
and Insurer Insolvency**

by

**S. Haberman, Z. Butt
& B. D. Rickayzen**

Actuarial Research Paper No. 136

February 2001

ISBN 1 901615 57 X

“Any opinions expressed in this paper are my/our own and not necessarily those of my/our employer or anyone else I/we have discussed them with. You must not copy this paper or quote it without my/our permission”.

We note that all models abstract to some extent from the real world and, as noted by Daykin et al (1994) and other authors, models are subject to three broad types of error or risk:

- model error - because models are not known with certainty and usually are only approximations to the real world
- parameter error - past observation data are limited in quantity and so parameters are not known with certainty.
- process (or stochastic) error - our target quantities will be subject to random fluctuations about the mean, even when the model and parameters are correct.

Our focus will be on the third component: process error. The pooling of insured units in a portfolio is a critical part of the insurance process and, as demonstrated by Cummins (1991), leads to a reduction in the relative level of variability in the portfolio i.e. the risk per unit. This is a statement about process error – the other two types of error are not controllable in a comparable way.

Before focusing on process error, we will make some comments at this stage about the 2 other types of error. Modelling a portfolio of disability insurance policies provides us with an example where model error could be important – there are, for example, at least 3 established methodologies for pricing and reserving of disability insurance products in use in the UK i.e. Manchester Unity, inception rates plus disability annuity approach and the multiple state model approach, although it is well argued that the multiple state model provides a framework within which the different models can be formulated (CMI Committee (1991), Haberman and Pitacco (1999)). Practitioners in the UK have tended to abandon the Manchester Unity approach because of the model error associated with it and now use one of the other two approaches. We would expect that the parameter error in disability insurance would be more significant than in life insurance because:

- a) the underlying data are less reliable
- b) the definition of sickness and of a claim are less clear cut, and are influenced by policy conditions;
- c) sickness claims are often linked with economic conditions and there is scope for a moral hazard.

One of our objectives will be to measure the process error for a portfolio of independent disability insurance policies in a multiple state modelling context. A second objective will be to compare the process error in a model with random multiple state transitions and deterministic interest assumptions with that in a model with both random multiple state transitions and random investment returns. That is we will be able to compare, in a specific case, the magnitudes of the relative variability due to demographic risks and due to demographic and economic risks combined.

In recent years, stochastic modelling in the fields of life insurance and defined benefit pension funds has been an area of considerable development. We can identify the following themes:

- a) demographic risks in life insurance for a single policy: Pollard and Pollard (1969);
- b) demographic and economic risks in life insurance for a single policy: Pollard (1971, 1976), Boyle (1976), Panjer and Bellhouse (1980), Bellhouse and Panjer (1981), Giaccotto (1986), Dhaene (1989, 1992), Beekman and Fuelling (1990, 1991, 1993);

- c) economic risks in an annuity portfolio and limiting distributions: Dufresne (1990), Beekman and Fuelling (1990, 1991, 1993), De Schepper and Goovaerts (1992), De Schepper et al (1994), Vanneste et al (1997), Milevsky (1997);
- d) demographic and economic risks in a life insurance portfolio: Waters (1978), Frees (1990), Parker (1994a, 1994b, 1994c, 1996, 1997), Marceau and Gaillardetz (1999).
- e) economic risks in a pension plan: Dufresne (1988, 1989, 1994), Haberman (1992, 1993a, 1993b, 1994, 1995, 1997), Zimbidis and Haberman (1993), Haberman and Sung (1994), Gerrard and Haberman (1996), Haberman and Wong (1997), Cairns and Parker (1997), Bédard (1999), Owadally and Haberman (1999a, 1999b), Haberman et al (2000);
- f) demographic and economic risks in a pension plan: O'Brien (1986, 1987), Mandl and Mazurová (1996), Bilodeau (2000).

In life insurance, it is usual to consider the process risk as being relatively insignificant because claim amounts are fixed and portfolios tend to be large so that the law of large numbers and pooling lead to a reduction in process risk. However, Marceau and Gaillardetz (1999) have demonstrated that this effect operates differentially for different types of life insurance policy with the mortality process risk being more significant for temporary insurances than for endowment insurances. In disability insurance, there is variability in terms of claims incidence and size (i.e. measured by duration of time spent sick or disabled) and portfolios tend to be smaller than in life insurance, so that we might expect that liability process risk may not be negligible. This will be investigated in subsequent sections.

2. METHODOLOGY

We construct a simple asset-liability model of an insurer with PHI business only using a multiple state model. We simulate paths for individual policyholders occupying the healthy and sick states and moving between states and simulate investment returns using the widely used Wilkie model. As overall measures of risk, we will consider the probability of ruin for the portfolio and the levels of risk-based capital or risk-loaded premium to achieve a pre-specified probability of ruin. We will focus on two cases:

- a) stochastic sickness experience and deterministic investment returns
- b) stochastic sickness and investment experience

and make comparisons.

3. MODELS AND ASSUMPTIONS

3.1 Multiple State Model

To describe the transitions, we have used the three-state healthy-sick-dead model, with the states labelled 1, 2, 3 respectively. We consider an insured aged x at entry and let $S(x+t)$ denote the random state occupied by the insured at age $x+t$, $t \geq 0$. We define the conditional probabilities

$${}_t P_x^{ij} = \Pr[S(x+t) = j | S(x) = i] \quad (1)$$

for $i, j \in (1,2,3)$, assuming the Markov property. For the specific applications here, we will consider new policyholders who are healthy at entry (i.e. $S(x)=1$).

Then we define the transition intensities

$$\mu_x^{ij} = \lim_{t \rightarrow 0} \left[\frac{{}_t P_x^{ij}}{t} \right] \quad (2)$$

For the functional form of the transition intensities we have adopted the graduated values obtained by CMI Committee (1991) from fitting to the 1975-78 experience, as these have wide currency in the UK (although a less complex set of graduations has been proposed by Renshaw and Haberman (1995)).

For the transition intensities from state 2 (sick), there is strong evidence of dependence on sickness duration, z , (i.e. length of stay in state 2) leading to a semi-Markov framework. However, we have ignored this level of complexity and used the corresponding graduated values corresponding to $z = 17$ weeks.

Our intention is to consider a portfolio of policies with a deferred period of 13 weeks. Where appropriate we have chosen the graduated transition intensities that are consistent with this selection. One of the features of the 1975-78 data (and other comparable data sets – see Renshaw and Haberman (1995)) is the reduced recovery rates during the first 4 weeks of claim. The choice of $z = 17$ weeks for the 13 week deferred week policies being considered here avoids this problem.

Thus, the functional forms are as follows:

$$\mu_x^{12} = \exp(a_0 + a_1 x + a_2 x^2 + a_3 x^3) \quad (3)$$

where $a_0 = -2.722$, $a_1 = 0.1290$, $a_2 = -4.240 \times 10^{-3}$ and $a_3 = 3.888 \times 10^{-5}$

$$\mu_x^{13} = b_0 + b_1 y + \exp(b_2 + b_3 y) \quad (4)$$

where $y = \frac{x-70}{50}$, $b_0 = -4.652 \times 10^{-3}$, $b_1 = -4.525 \times 10^{-3}$, $b_2 = -3.986$, $b_3 = 3.185$

$$\mu_x^{21} = c_0 + c_1 (x - c_2) \quad (5)$$

where $c_0 = 3.086$, $c_1 = -0.0927$, $c_2 = 50.326$

$$\mu_x^{23} = (d_0 + d_1(x - d_2) + d_3(x - d_2)^2) d_4 + d_5 \exp(d_6 x) \quad (6)$$

where $d_0 = 0.238$, $d_1 = -4.819 \times 10^{-3}$, $d_2 = 0.326$, $d_3 = 9.587 \times 10^{-5}$, $d_4 = 0.537$
 $d_5 = 7.221 \times 10^{-3}$, $d_6 = 2.435 \times 10^{-2}$.

3.2 Simulation and Thinning

If all policyholders are healthy at entry at age x say (i.e. in state 1), we will want to be able to simulate the path taken by each individual over the term of the policy. A convenient way to proceed is “thinning” as described by Ross (1990) and utilised by Jones (1997) for modelling continuing care retirement communities.

For a policyholder in state 1 at age x at time 0 and a policy with term n years we consider

$$\alpha = \max_{x \leq t \leq x+n} (\mu_t^{12} + \mu_t^{13}) \quad (7)$$

where the term in parentheses represents the transition intensity out of state 1 at age u , and α is chosen to be greater than or equal to this overall intensity throughout the age range $[x, x+n]$. We can generate event times of a Poisson process with rate α since the intervals between successive event times would be exponentially distributed with parameter α^{-1} . There are too many such event times because of the definition of α in (7) and so we “thin” out the jumps by simulating a random number that is uniform on (0,1) and accepting the first jump t_1 say if the random number is no greater than the ratio:

$$\frac{\mu_{x+t_1}^{12} + \mu_{x+t_1}^{13}}{\alpha}$$

If t_1^* is the first accepted jump, then we need to establish whether the insured jumps to state 2 or state 3. This is effected by simulating a third random number that is uniform on (0,1) and if this random number is no greater than the ratio

$$\frac{\mu_{x+t_1^*}^{12}}{\mu_{x+t_1^*}^{12} + \mu_{x+t_1^*}^{13}}$$

we accept the jump as being to the sick state (i.e. state 2).

Once the simulation has led to our deciding on the time and state of the next transition, we move forward to that next transition and determine α (in relation to age $x+t_1^*$) and proceed iteratively until we have a transition that takes the insured beyond time n or until death. The simulation and thinning process is summarised in the flow chart shown in Figure 1.

We note that there is a choice regarding a simulated jump time, t , which takes the path beyond time n : we can accept this either with or without testing it against a random number as in the thinning process. We have chosen the former on grounds of simplicity and have checked for certain cases whether the latter approach would markedly affect the results. Our conclusion is that there is little difference between the two approaches.

THINNING FLOW CHART

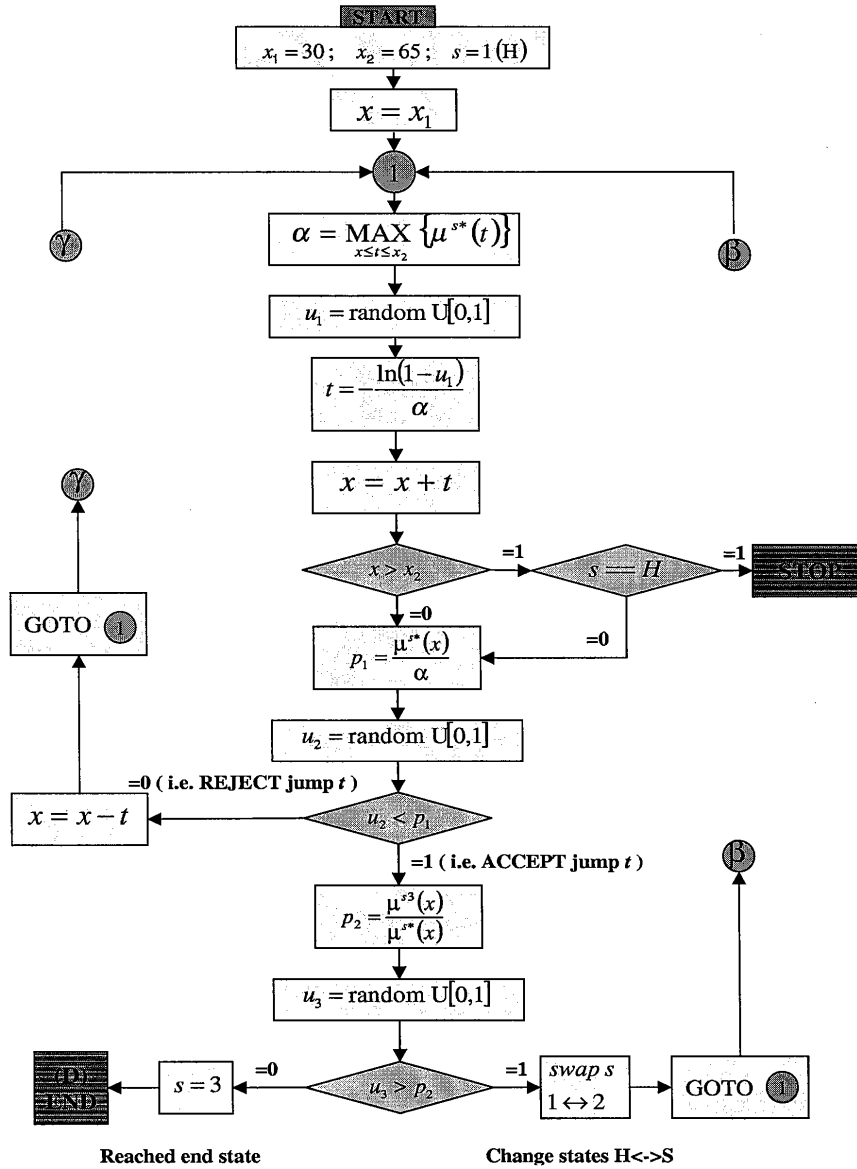


Figure 1: Logical Scheme of Simulation with Thinning.

3.3 Investment Returns Model

In order to generate random investment returns, we will use the widely accepted Wilkie model for equity returns and returns on index-linked government bonds. We use the structure of the model as in Wilkie (1995) and the initial parameter settings recommended therein. We consider an asset portfolio comprising 50% equities and 50% index-linked government bonds, with annual rebalancing so that the asset allocation strategy is static.

For the simulations where we investigate the effect of a deterministic interest rate assumption, we have used a fixed interest rate of 10.7% per annum. This is obtained from running 1,000 simulations of the Wilkie model over an appropriate time horizon and calculating the equivalent mean annual compounding interest rate. Minor adjustments have been made to allow for the effect of different time horizons for the projections, corresponding to different ages at entry (see later).

3.4 Policy Design

We consider a policy with terminal age 65 and a range of entry ages: 30, 40, 50 and 60. Premiums are payable while the policyholder is healthy or while the policyholder is sick but for a period less than the deferred period (i.e. a no claim exclusion period). Benefits are payable as an annuity while the policyholder is sick for a duration longer than the deferred period. Expenses are incorporated. Inflation on both premiums and expenses is also allowed for. Taxation is ignored. A fixed gross premium valuation basis is used throughout, together with a fixed risk discount rate to measure profitability.

The detailed assumptions are as follows and are intended to be representative of PHI contracts at the time of writing:

Deferred period:	13 weeks
Expenses: Initial	£200 at inception of policy
Renewal	£25 pa if the policyholder is healthy £95 pa if the policyholder is sick
Claim	£200 at inception of the claim
Inflation:	of benefits and premiums 3% pa (fixed). of expenses 4% pa (fixed)
Benefits:	£8,000pa while policyholder is sick, but subject to the requirements of the deferred period.
Ages at entry:	30, 40, 50 or 60
Termination age:	65
Valuation basis:	gross premium prospective policy values using multiple state annuity values (see later). Valuation rate of interest: 6.5 %pa, otherwise the assumptions follow the premium basis.
Risk discount rate:	15% pa.

3.5 Cash Flow Model

For any policy year $(t, t+1)$, the cash flow is assumed to occur mid-way through the year and is defined to be the difference between the simulated income and outgo i.e. for simulation j , the cash flow per cohort is:

$$CF_t^j = P_t^j - W_t^j - Y_t^j - Z_t^j - C_t^j \quad (8)$$

where for the policy year $(t, t+1)$ and simulation j :

P_t^j = total premiums paid by all policyholders

W_t^j = total premium-related expenses

Y_t^j = total initial claim expenses (payable at the commencement of a claim)

Z_t^j = total regular claim expenses

C_t^j = total claim payments payable to policyholders who are sick and for whom the duration of sickness exceeds the deferred period of the policy.

In equation (8), the terms P_t^j and W_t^j are proportional to the simulated time spent in the healthy state or in the sick state if less than the deferred period. The term Y_t^j is proportional to the simulated number of new claims initiated in year $(t, t+1)$.

The policy funds then accumulate as follows

$$A_{t+1}^j = A_t^j(1 + r_t^j) + CF_t^j(1 + r_t^j)^{\frac{1}{2}} \quad (9)$$

where A_t^j represents the accumulated assets at time t for simulation j and r_t^j is the simulated rate of return on investment for year $(t, t+1)$. We assume that $A_0^j = 0$ so that there are zero initial assets per policy.

For the case where rates of return on investment are assumed to be non-stochastic, then we replace r_t^j by r_t (and in this case, as noted in section 3.3, we let $r_t = 0.107$ for all t).

3.6 Reserves and Profit Model

The deterministic reserves at time t per policy for a policyholder aged x at entry who is in state k at time t are defined as follows:

$$\begin{aligned} {}^kV_t = & c_t(1 + e_1)^{\frac{1}{2}} \bar{a}_{t:N-\overline{p}}^{k,2,1} + w_t(1 + e_2)^{\frac{1}{2}} \bar{a}_{t:N-\overline{p}}^{k,1,2} \\ & + y_t(1 + e_2)^{\frac{1}{2}} \bar{a}_{t:N-\overline{p}}^{k,2,2} - p_t(1 + e_1)^{\frac{1}{2}} \bar{a}_{t:N-\overline{p}}^{k,1,1} \end{aligned} \quad (10)$$

where p_t is the premium payable in year $(t, t+1)$

c_t is the claim payment for year $(t, t+1)$
 y_t is the claim expense payment for year $(t, t+1)$
 w_t is the premium-related expense payment for year $(t, t+1)$
 e_1 is the assumed rate of inflation for premiums and claims
 e_2 is the assumed rate of inflation for expenses

and the annuity functions are defined by

$$\bar{a}_{t:N-t}^{k,m,n} = \sum_{s=0}^{N-1-t} \left[l_{x+t+s+\frac{1}{2}}^{km} \left(\frac{1+e_n}{1+i} \right)^{s+\frac{1}{2}} \right] \quad \text{where } (k,m,n) \in \{1,2\} \quad (11)$$

and N is the termination age (65), i is the valuation rate of interest and $l_{x+t+s+\frac{1}{2}}^{km}$ are taken from the multiple state life table derived from the multiple state model (see Haberman and Pitacco (1999)) and represent the proportion of lives in state k at age $x+t$ who are in state m at age $x+t+s+\frac{1}{2}$. The l functions satisfy the recurrence relation

$$l_{x+t}^{km} = l_{x+t-1}^{k1} \cdot {}_1p_{x+t-1}^{1m} + l_{x+t-1}^{k2} \cdot {}_1p_{x+t-1}^{2m} \quad (12)$$

where the ${}_1p_y^{im}$ are the 1 year conditional transition probabilities from the multiple state model. For the l functions at the midpoint of each year, we use the simple approximation:

$$l_{x+t+\frac{1}{2}}^{km} = \frac{1}{2} (l_{x+t}^{km} + l_{x+t+1}^{km}).$$

For the calculation of the ${}_1p_y^{im}$ probabilities, we use the matrix method advocated by Cox and Miller (1965) and Haberman and Pitacco (1999) based on the assumption of constant transition intensities over each one month of age.

The profit for year t is then calculated from the cash flow and reserves. Letting TV_t^j be the total reserves at time t (for policyholders in states 1 and 2) for simulation j , then we define the profits for year $(t, t+1)$, accumulated to the end of the year, for simulation j as follows:

$$PRO_{t+1}^j = CF_t^j (1+r_t^j)^{\frac{1}{2}} + TV_t^j (1+r_t^j) - TV_{t+1}^j. \quad (13)$$

Then to assess profitability, we consider measures based on the net present value of profits and premiums where, for simulation j ,

$$NPV \text{ PROFIT}^j = \sum_{t=0}^{N-x} \frac{PRO_{t+1}^j}{(1+r_D)^{t+1}}$$

and

$$NPV\ PREM^j = \sum_{t=0}^{N-x} \frac{P_t^j}{(1+r_D)^{t+\frac{1}{2}}}$$

with r_D the chosen risk discount rate. This follows the now widely-used profit testing methodology: see for example Booth et al (1999).

3.7 Calculation of a “Break-Even” Premium

In order to calculate the “break-even” premium per policy, we consider a portfolio of 1,000 identical policies and run 500 simulations of the residual policy funds (using the stochastic asset model) at the termination of the contracts (i.e. at age 65) for a given initial premium. We then use iteration to derive a value for the initial premium such that

$$\Pr (A_{N-x} < 0) = 0.5 \quad (14)$$

where A_s represents the accumulated policy assets at time s .

The values that are obtained are as follows:

Age at Entry	Initial Premium (£)
30	220
40	272
50	336
60	462

This approach is different from the conventional approach based on the equivalence principle where we equate expected present values of policy income and outgo. In future work, we will investigate the effect of different choices for the calculation method for the premium. The implications of using (14) are that

- a) the premium does not include any margin for profit or adverse experience
- b) the company expects to “break even” at the termination of the contracts, assuming that all profits are retained internally
- c) any projection that leads to ruin (of the portfolio) can be attributed to “process error” only.

4. SIMULATION RESULTS

Because of the limited space available, we will present only a selection of the results. Figure 2 shows the simulated distribution of policy funds/assets for a portfolio of n policies issued at age 30 for the respective cases $n=1,000$ and $10,000$, based on 500 simulations. These figures summarise the distribution at each age through the use of Box-plots with the 25th, 50th and 75th percentiles clearly identified. Figure 2 is based on the deterministic investment rate assumption. . It is clear that as n increases, the distributions become more compact.

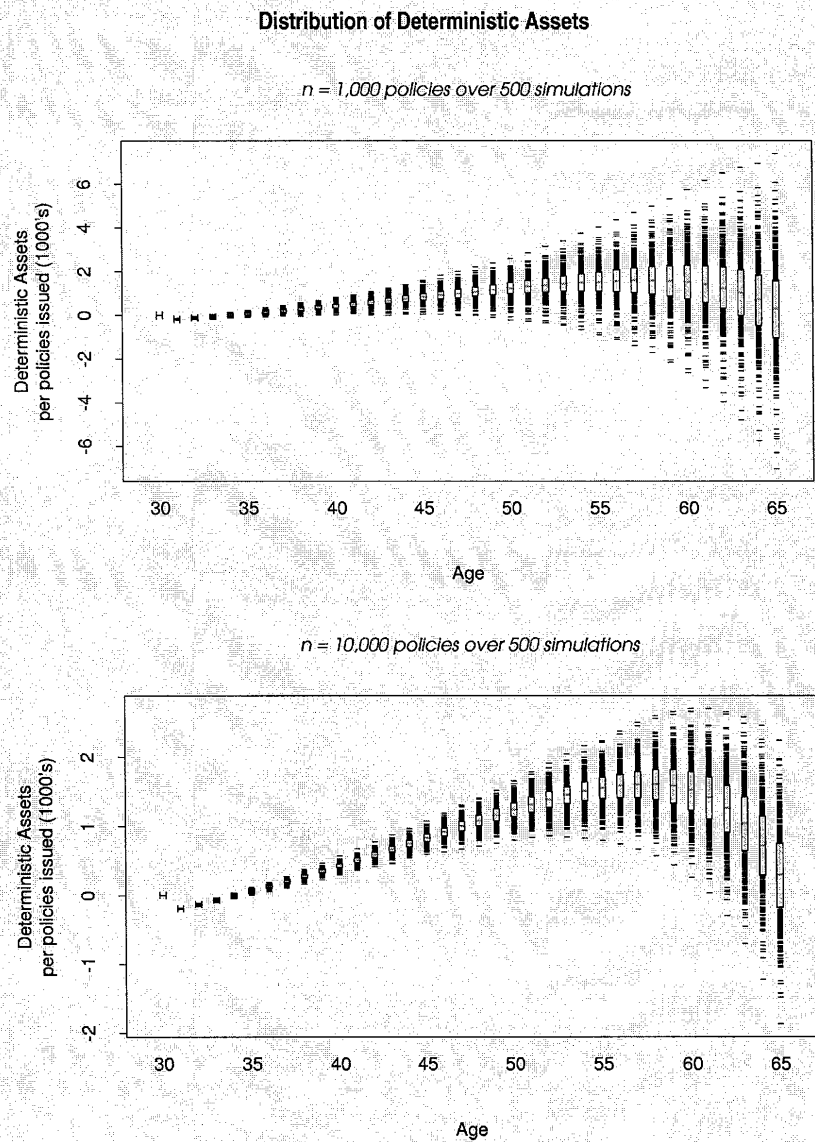
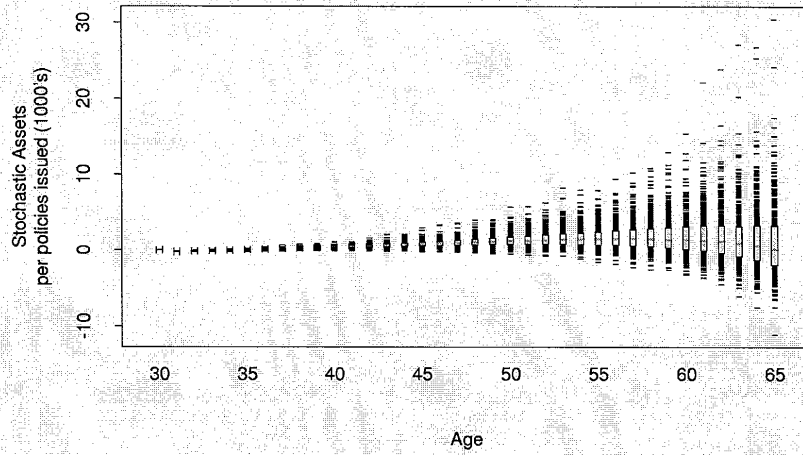


Figure 2: Deterministic Assets Distribution over age for 1,000 and 10,000 policies assumed at outset.

Distribution of Stochastic Assets

n = 1,000 policies over 500 simulations



n = 10,000 policies over 500 simulations

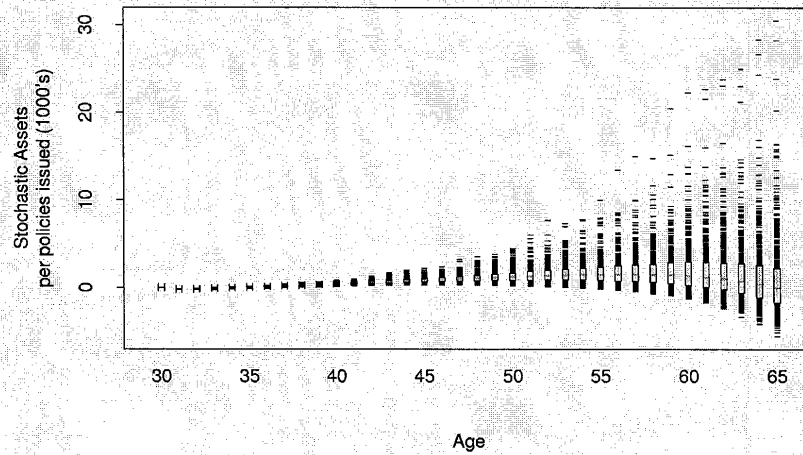
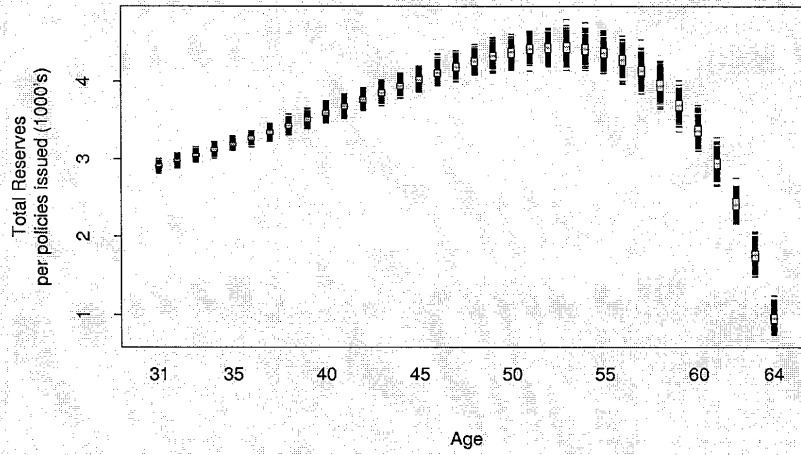


Figure 3: Stochastic Assets Distribution over age for 1,000 and 10,000 policies assumed at outset.

Distribution of Total Reserves

n = 1,000 policies over 500 simulations



n = 10,000 policies over 500 simulations

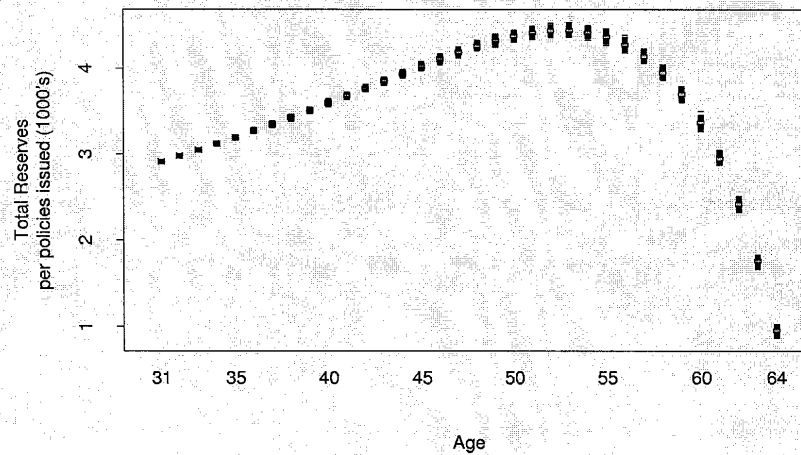


Figure 4: Distribution of Reserves over age for 1,000 and 10,000 policies assumed at outset.

Figure 3 repeats the presentation but allows for stochastic investment returns and now the distributions are much wider – as we would anticipate because of the extra source of variability present.

Figure 4 illustrates the progression of the simulated distribution of the reserves for the portfolio. We note the characteristic shape, with the distribution centred on a positive level at age 31 and progressing to a peak and then to zero by age 65 (as for a temporary life insurance portfolio). The reserves begin with a valuation strain because the premium and reserving assumptions are not identical.

Figures 5-8 illustrate the simulated distributions of the residual assets for portfolios of lives with initial ages 30, 40, 50 and 60 respectively, with the rates of investment returns generated from the Wilkie model as described earlier. Figure 9 corresponds to Figure 5 for the case of deterministic investment returns. The following features are noteworthy.

- a) increasing the portfolio size from $n=1,000$ to $n=10,000$ when the asset model is deterministic leads to a reduction in the standard deviation of the residual assets by a factor of $\sqrt{10}$ (as we would expect from the pooling of risks), so that the distribution is sharper (Figure 9);
- b) property a) is not exhibited in Figures 5-8. This is because pooling of risks does not reduce the impact of investment return variability which affects all policies in the portfolio simultaneously;
- c) increasing the policy term, i.e. reducing the age at entry, leads to an increase in the skewness of the distribution. This is because the accumulation effect becomes stronger for longer terms and corresponds to the approximate lognormal character of the results from the Wilkie model. (Figures 5-8);
- d) the probability of ruin estimates derived from the simulations are close to 0.5 for Figures 5-8. Given the criterion for determining the premium, we would anticipate such a result. Figure 9 leads to a lower probability of ruin (particularly for the case $n=10,000$), because these simulations use a deterministic asset model and lead to fewer unfavourable results.

Figure 10 presents the simulated distribution of the net present value of profits for a portfolio of policies with age at entry 30 based on the model with stochastic asset returns. Increasing the size of the portfolio makes little difference to the standard deviation of the distribution because of the dominant effect of investment return variability. The means in both cases are negative, because of the choice of $r_p = 15\%$ per annum in computing the present values.

We now consider the effects of changing the initial assets and the premium per policy. For the case of a portfolio of policies with age at entry and $n=1,000$, Figure 11 presents the effect on the probability of ruin of increasing the initial assets from zero in the upper panel and the effect of moving from the break-even initial premium of £220 in the lower panel. In each case, the curves of the probability of ruin for the full stochastic model and for the model with deterministic asset returns are presented. We note the following features:

- a) initial assets of zero correspond approximately to a probability of ruin of 0.5 for the stochastic case (and slightly lower for the deterministic case for the reason cited earlier);
- b) increasing the initial assets per policy leads to a lower probability of ruin. This is more marked for the deterministic case where there is less overall variability;
- c) an initial premium of £220 corresponds approximately to a probability of ruin of 0.5;

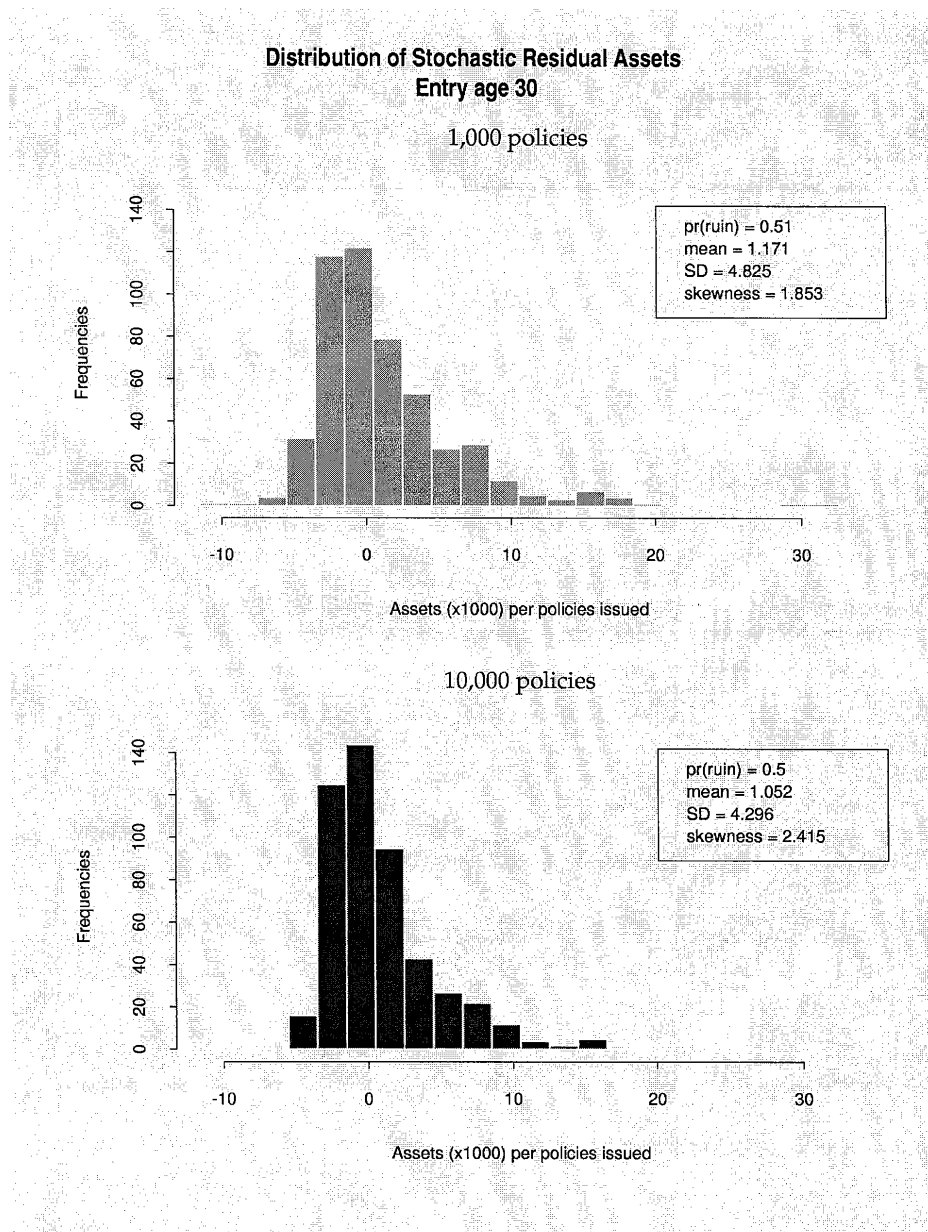


Figure 5: Stochastic Residual Assets Distribution corresponding to entry age 30.

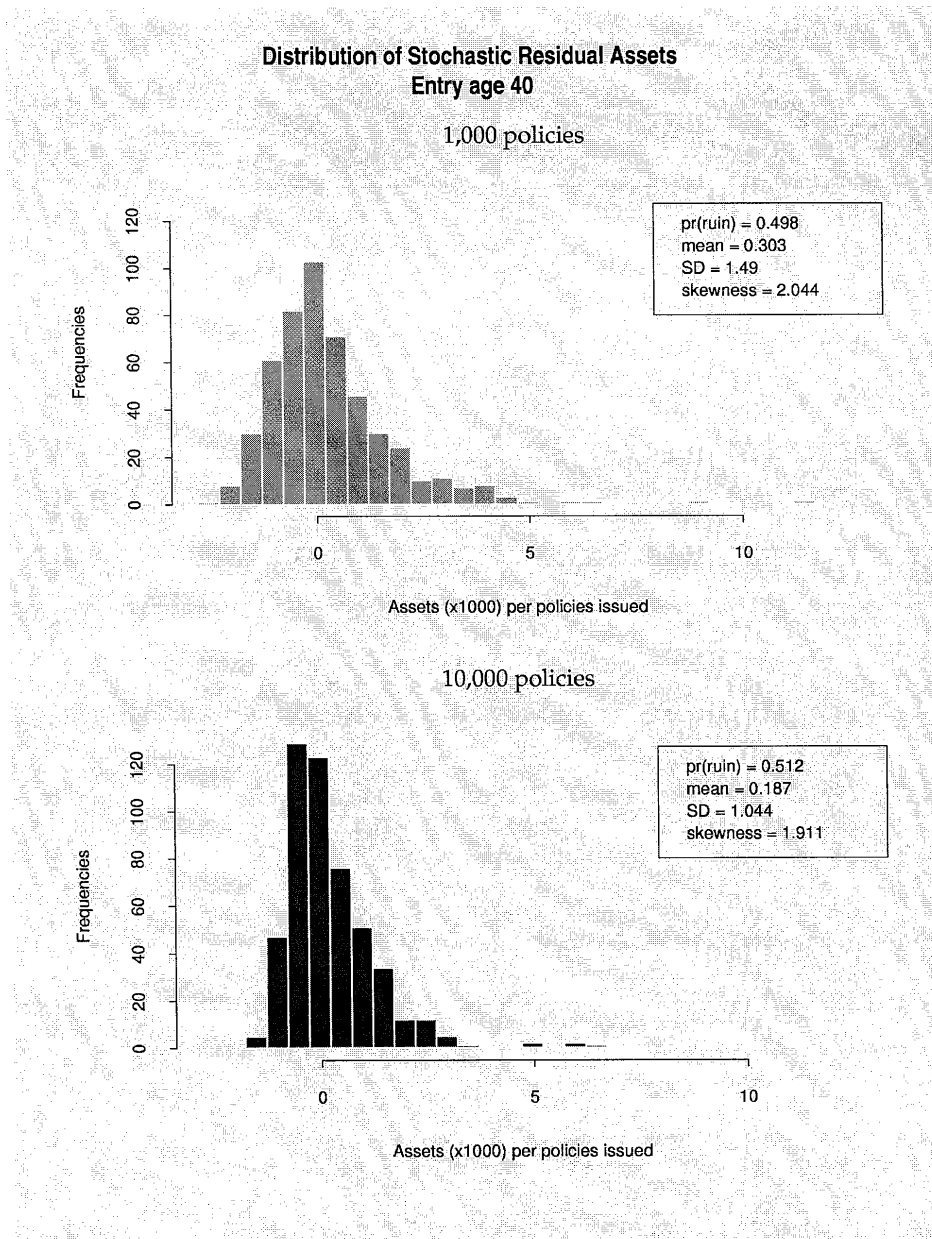


Figure 6: Stochastic Residual Assets Distribution corresponding to entry age 40.

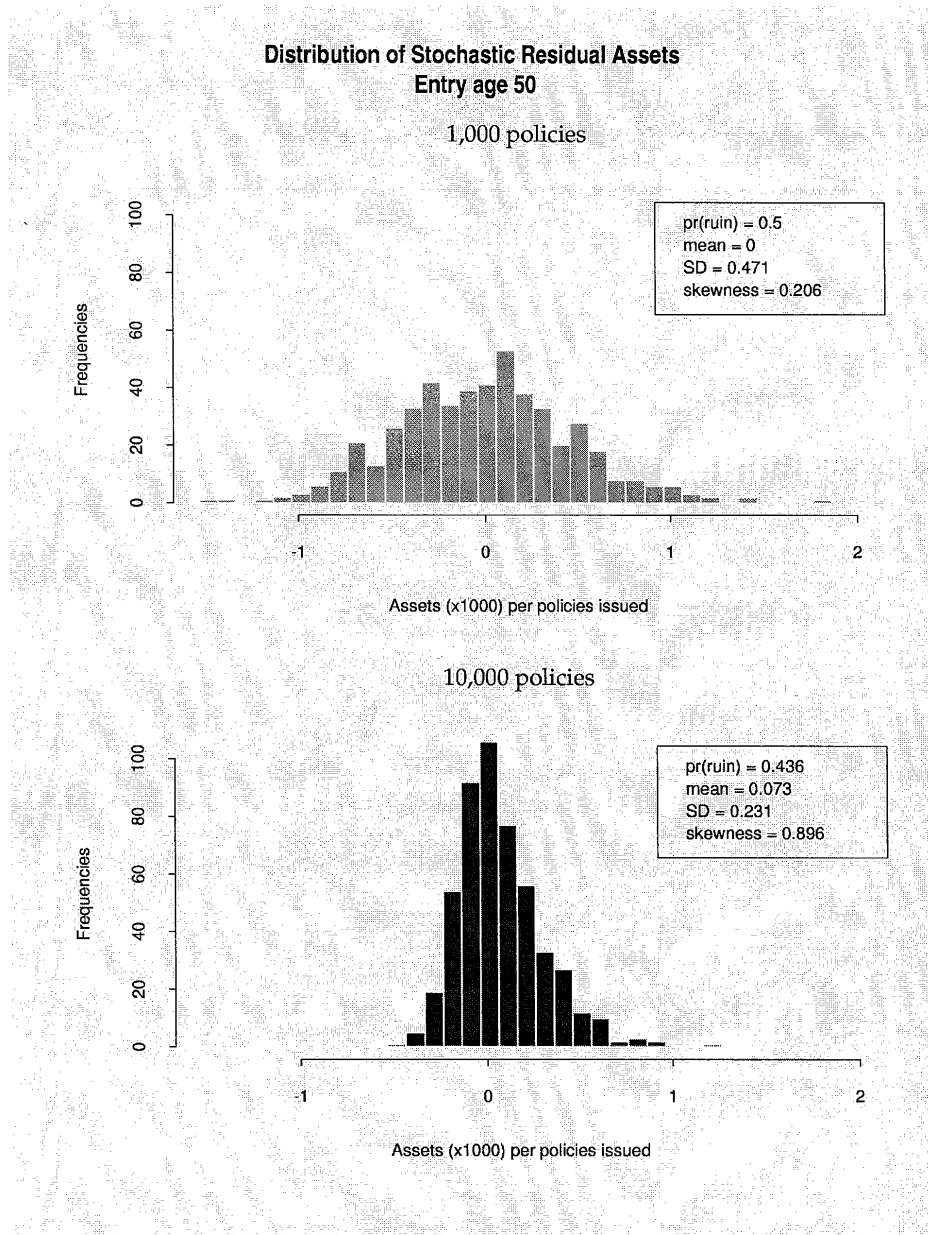


Figure 7: Stochastic Residual Assets Distribution corresponding to entry age 50.

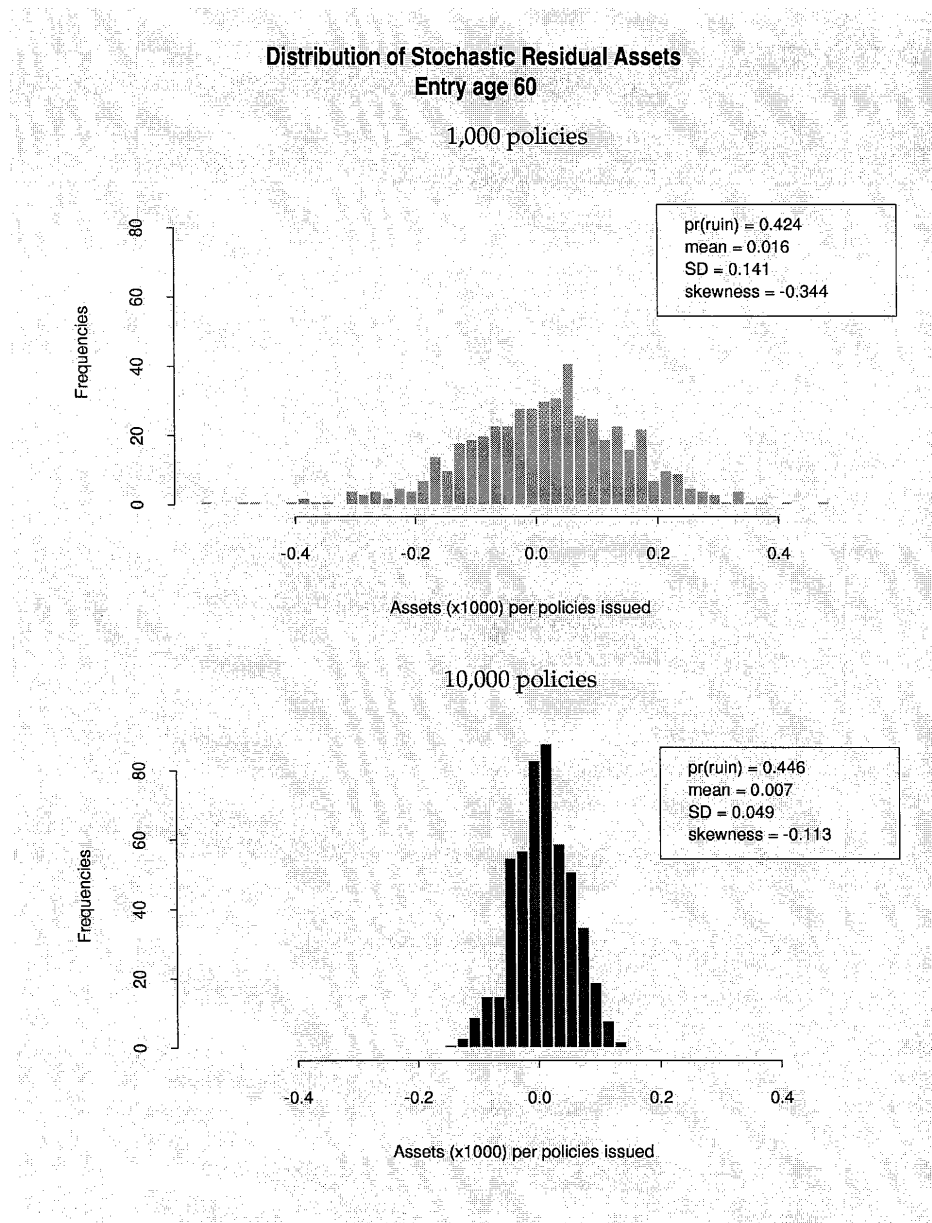


Figure 8: Stochastic Residual Assets Distribution corresponding to entry age 60.

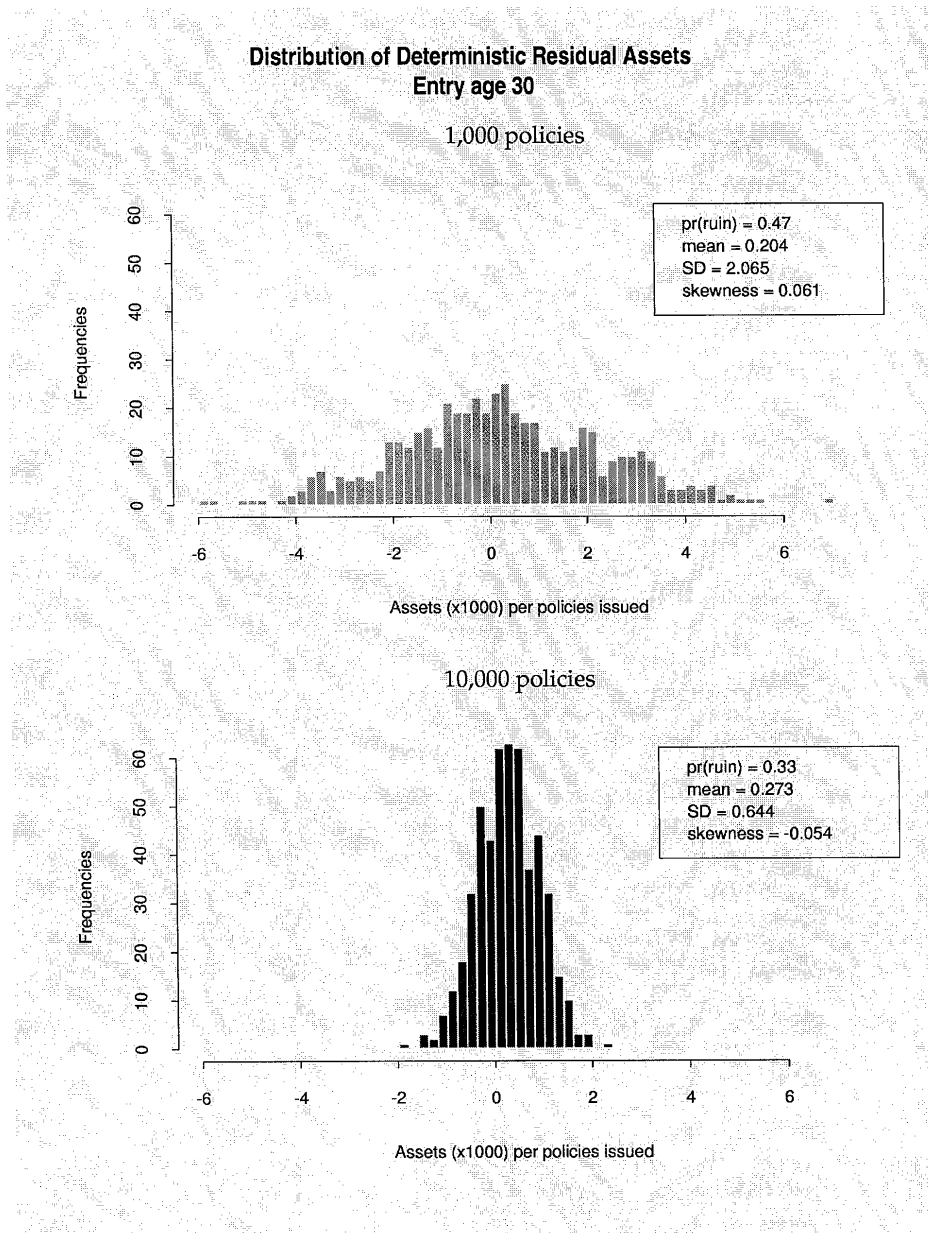


Figure 9: Deterministic Residual Assets Distribution corresponding to entry age 30.

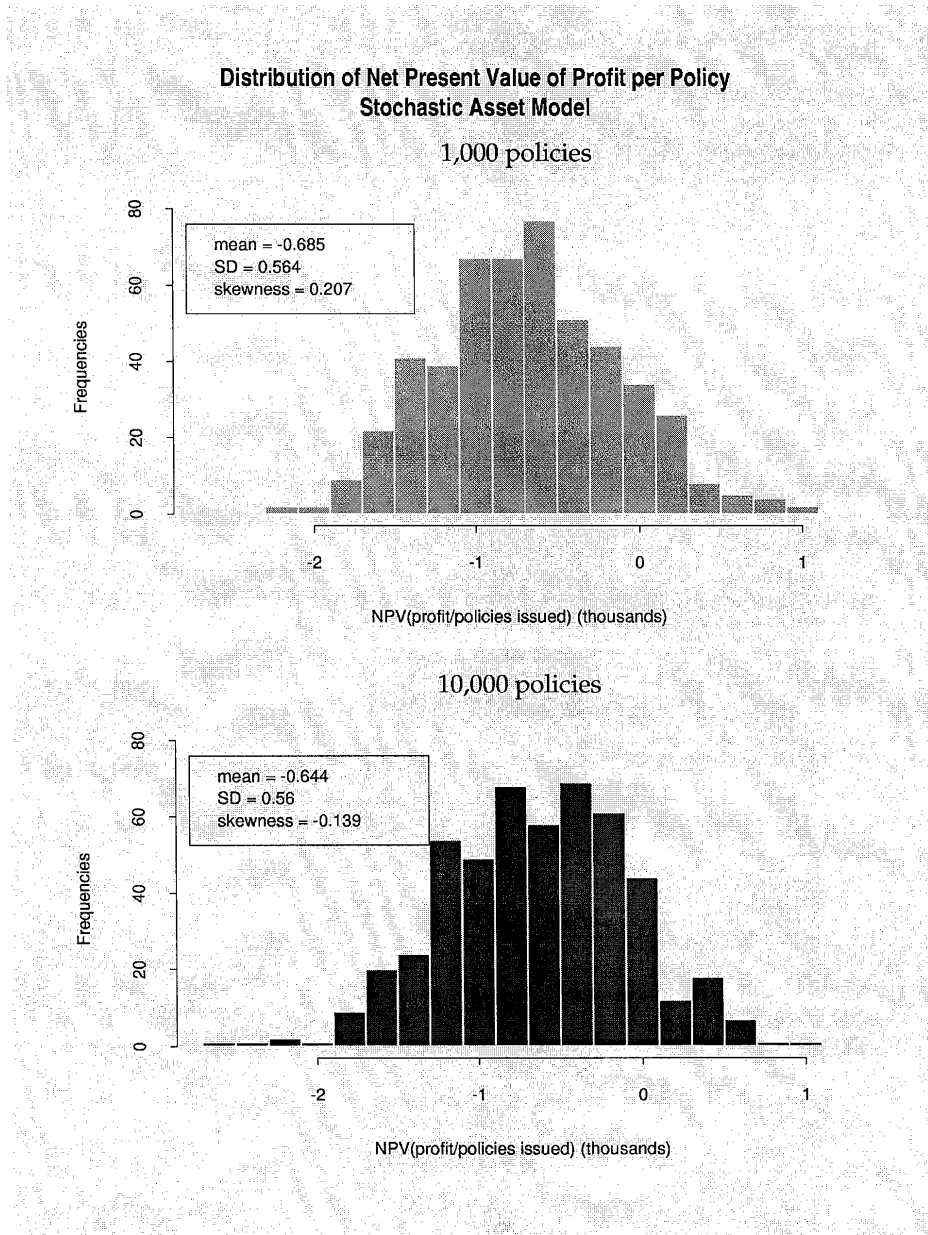


Figure 10: Distribution of Net Present Value of Profits based on Stochastic investment model for entry age 30.

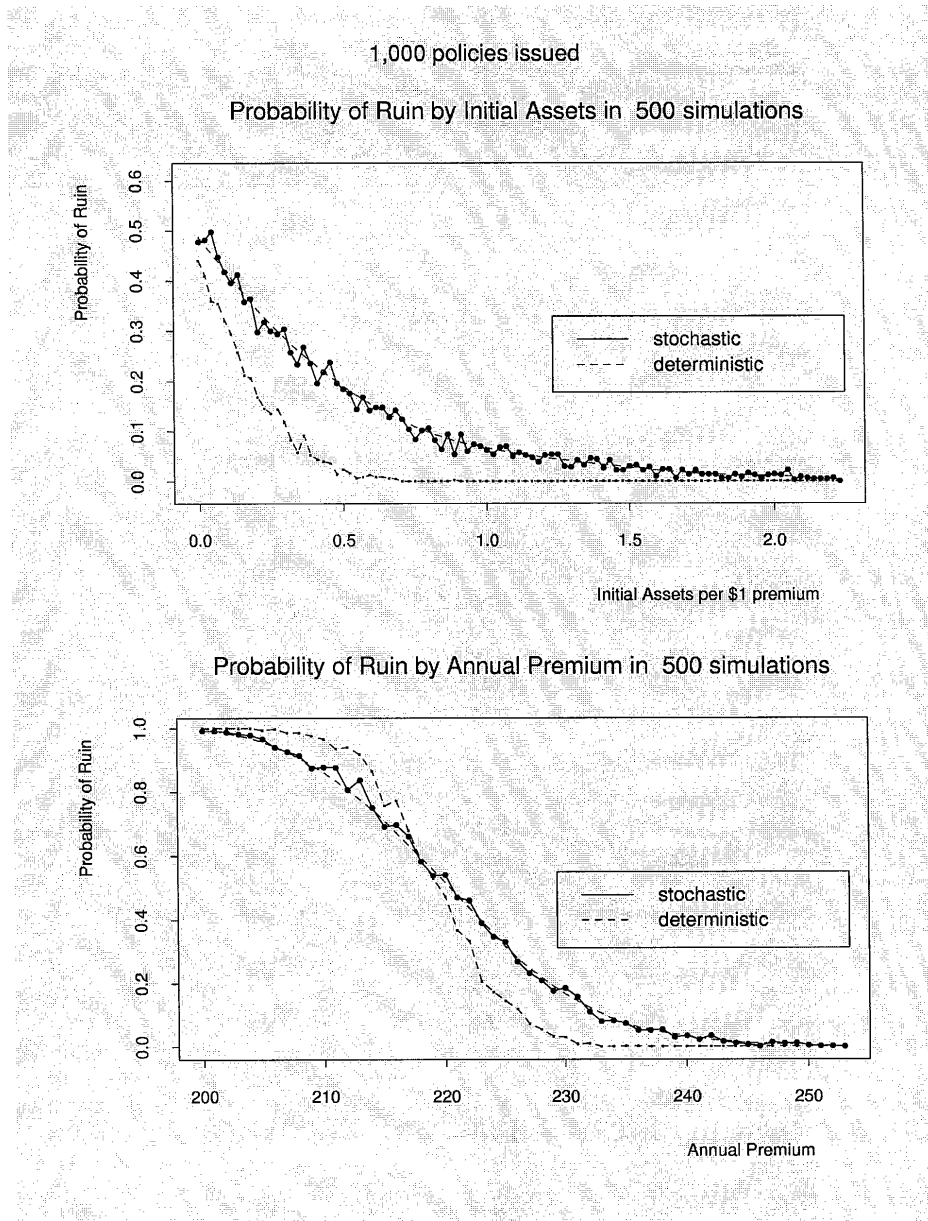


Figure 11: Probability of Ruin by initial assets and premium level for 1,000 policies assumed at outset.

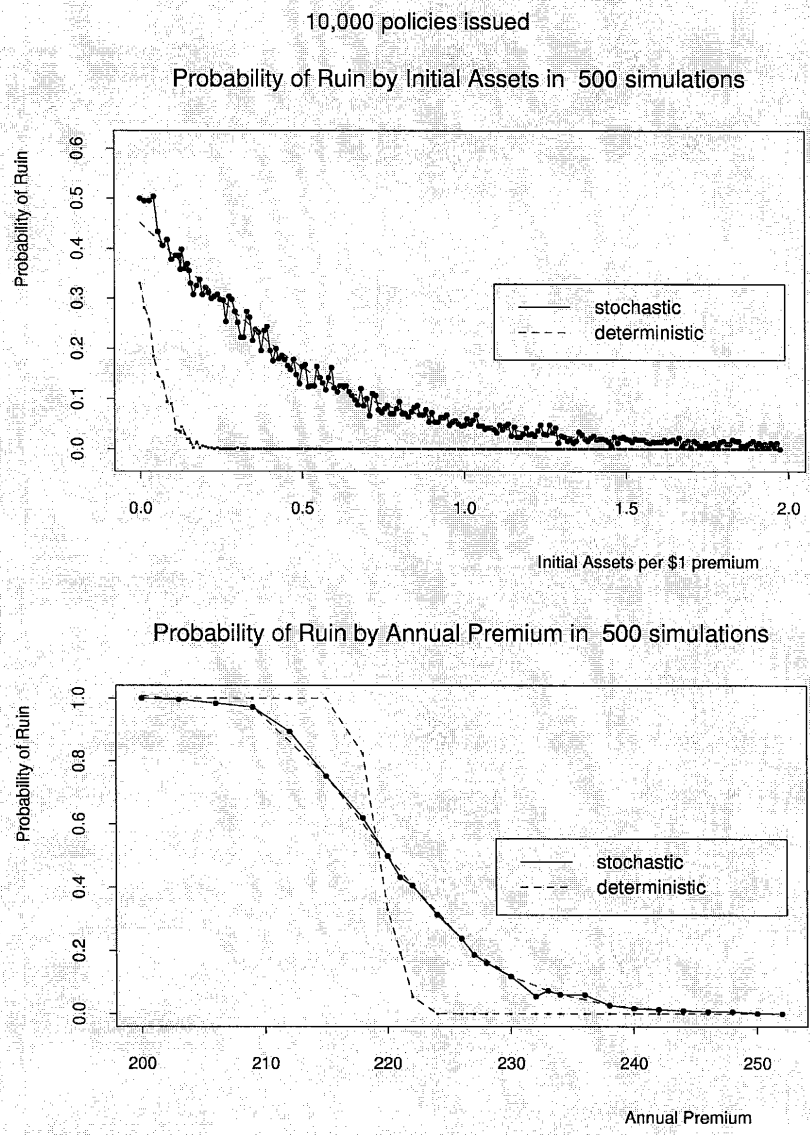


Figure 12: Probability of Ruin by initial assets and premium level for 10,000 policies assumed at outset.

- d) increasing the premium leads to a lower probability of ruin, which, as in b), is more marked for the deterministic case;
- e) decreasing the premium leads to a higher probability of ruin and we note that, unlike d), the extra variability from the stochastic case can help when the premium is inadequate and leads to a lower ruin probability.

Figure 12 refers to the case $n=10,000$ and we note the smoother progression of the curves. For the deterministic runs, the move from Figure 11 to 12 is particularly dramatic, with the tenfold increase in portfolio size leading to a reduction in “process risk” and a change in the shape of the curves.

An alternative method of presentation of probability of ruin is to compute the risk-based capital, which would be the initial assets $A_0(\varepsilon)$ required to produce a given level of ruin probability (ε). Table 1 presents some examples of $A_0(\varepsilon)$ for the cases of $n=1,000$ and $10,000$; deterministic and stochastic asset models and a range of values of ε . The results show that:

- (a) reducing ε leads to an increase in $A_0(\varepsilon)$;
- (b) for the deterministic asset model, increasing n has a strong effect on $A_0(\varepsilon)$, implying the extent to which process risk is reduced;
- (c) for the stochastic asset model, as noted earlier, the effect of increasing n has a much less strong effect on $A_0(\varepsilon)$ and hence on process risk.

Table 2 presents the results for $A_0(\varepsilon)=0$ for $\varepsilon = 5\%$ but allowing a proportionate risk loading $1+\lambda(\varepsilon)$ to the premiums. Similar effects are demonstrated.

5. CONCLUSIONS

The results presented here (and more extensive investigations not reported) demonstrate that the demographic process error is reduced by pooling, as implied by the law of large numbers. We have shown that the economic process error is considerably more significant than the demographic process error for portfolios of disability income protection policies. We have also demonstrated the methodology for simulating in a multiple state context and shown how estimates for risk-loaded premiums or for risk-based capital can be obtained.

6. FURTHER WORK

We are investigating a range of enhancements to the model, including:

- a) allowing for the dependence of the transitions intensities from the sick state on duration of sickness;
- b) allowing the inflation rates to be random rather than fixed;
- c) calculating the premium via the equivalence principle;
- d) considering coherent risk measures, for example, expected adverse deviation or mean shortfall, rather than risk-based capital measures derived from percentiles (see Artzner et al (1999));
- e) allowing for mixed liability portfolios, variable number of entrants, different asset allocation strategies;
- f) consideration of parameter risk and comparison with process risk.

Table 1

**Risk-Based Capital
Age at entry 30, Initial Premium £220**

**Initial assets required to produce a given ruin probability:
(Per £1 annual premium in year 1)**

Pr (Ruin)	Deterministic Asset Model		Stochastic Asset Model	
	<i>n</i> =1,000	<i>n</i> =10,000	<i>n</i> =1,000	<i>n</i> =10,000
25%	0.148	0.025	0.374	0.328
10%	0.305	0.081	0.799	0.692
5%	0.402	0.101	1.224	1.020
1%	0.534	0.162	1.820	1.651

Table 2

**Risk-Loaded Premium
Age at entry 30, Initial Premium £220**

**Additional premium required to produce a 5% ruin probability assuming 0 initial assets:
(Per £1 annual premium in year 1)**

<i>n</i>	Deterministic Asset Model	Stochastic Asset Model
1,000	0.035	0.077
10,000	0.010	0.070

REFERENCES

- Artzner, P., Delbaen, F., Eber, J.-M. and Heath, D. 1999., Coherent Measures of Risk. *Mathematical Finance* 9, 203-228.
- Bédard, D., 1999. Stochastic pension funding: proportional control and bilinear processes. *ASTIN Bulletin* 29, 271-293.
- Beekman, J.A. and Fuelling, C.P., 1990. Extra randomness in certain annuity models. *Insurance: Mathematics and Economics* 9, 185-196.
- Beekman, J.A. and Fuelling, C.P., 1991. Interest and mortality randomness in some annuities. *Insurance: Mathematics and Economics* 10, 275-287.
- Beekman, J.A. and Fuelling, C.P., 1993. One approach to dual randomness in life insurance. *Scandinavian Actuarial Journal* 2, 173-182.
- Bellhouse, D.R. and Panjer, H.H., 1981. Stochastic modelling of interest rates with applications to life contingencies – Part II. *Journal of Risk and Insurance* 47, 628-637.
- Bilodeau, C., 2000. On the demographic and economic risks of a pension plan. Presented to Fourth International Congress on Insurance: Mathematics and Economics, University of Barcelona.
- Booth, P.B., Chadburn, R.G., Cooper D.R.; Haberman S., and James D.E., 1999. *Modern Actuarial Theory and Practice*. CRC/Chapman and Hall, Boca Raton.
- Boyle P.P., 1976. Rates of return as random variables. *Journal of Risk and Insurance* 43, 693-713.
- Cairns, A.J.G. and Parker, G., 1997. Stochastic pension fund modelling. *Insurance: Mathematics and Economics*, 21, 43-79.
- CMI Committee 1991. Continuous Mortality Investigation Reports No 12. Institute and Faculty of Actuaries, London.
- Cox, D.R. and Miller, H.D., 1965. *The Theory of Stochastic Processes*. Chapman and Hall, London.
- Cummins, J.D., 1991. Statistical and financial models of insurance pricing and the insurance firm. *Journal of Risk and Insurance* 58, 261-302.
- Daykin, C.D., Pentikainen, T. and Pesonen, M., 1994. *Practical Risk Theory for Actuaries*. Chapman and Hall, London.
- De Schepper, A. and Goovaerts, M., 1992. Some further results on annuities certain with random interest. *Insurance: Mathematics and Economics* 11, 283-290.
- De Schepper, A., Teunen, M., and Goovaerts, M., 1994. Some further results on annuities certain with random interest. *Insurance: Mathematics and Economics* 14, 33-37.
- Dhaene, J., 1989. Stochastic interest rates and autoregressive integrated moving average processes. *ASTIN Bulletin* 19, 131-138.
- Dhaene, J., 1992. Actuarial functions and random rates of return. *Bulletin of the Royal Society of Belgian Actuaries* 85, 23-26.
- Dufresne, D., 1988. Moments of pension contributions and fund levels when rates of return are random. *Journal of the Institute of Actuaries*, 115, 535-544.
- Dufresne, D., 1989. Stability of pension systems when rates of return are random. *Insurance: Mathematics and Economics*, 8, 71-76.
- Dufresne, D., 1990. The distribution of a perpetuity, with applications to risk theory and pension funding. *Scandinavian Actuarial Journal*, 39-79.

- Dufresne, D., 1994. *Mathématiques des Caisses de Retraite*. Editions Supremum, Montréal.
- Frees, E.W., 1990. Stochastic life contingencies with solvency considerations. *Transactions of the Society of Actuaries* 42, 911-948.
- Gerrard, R.J. and Haberman, S., 1996. Stability of pension systems when gains/losses are amortized and rates of return are auto-regressive. *Insurance: Mathematics and Economics*, 18, 59-71.
- Giaccotto, C., 1986. Stochastic modelling of interest rates: actuarial v 's equilibrium approach. *Journal of Risk and Insurance* 53, 435-453.
- Haberman, S., 1992. Pension funding with time delays – a stochastic approach. *Insurance: Mathematics and Economics*, 11, 179-189.
- Haberman, S., 1993a. Pension funding with time delays and autoregressive rates of investment return. *Insurance: Mathematics and Economics* 13, 45-56.
- Haberman, S., 1993b. Pension funding: the effect of changing the frequency of valuations. *Insurance: Mathematics and Economics*, 13, 263-270.
- Haberman, S., 1994. Autoregressive rates of return and the variability of pension contributions and fund levels for a defined benefit pension scheme. *Insurance: Mathematics and Economics*, 14, 219-240.
- Haberman, S., 1995. Pension funding with time delays and the optimal spread period. *ASTIN Bulletin*, 25, 177-187.
- Haberman, S., 1997. Stochastic investment returns and contribution rate risk in a defined benefit pension scheme. *Insurance: Mathematics and Economics* 19, 127-139.
- Haberman S., Butt, Z. and Megaloudi C., 2000. Contribution and solvency risk in a defined benefit pension scheme. *Insurance: Mathematics and Economics*, 27, 237-259.
- Haberman, S., and Pitacco E., 1999. *Actuarial Models for Disability Insurance*. CRC/Chapman and Hall, Boca Raton.
- Haberman, S. and Sung, J-H., 1994. Dynamic approaches to pension funding. *Insurance: Mathematics and Economics*, 15, 151-162.
- Haberman, S. and Wong, L.Y.P., 1997. Moving average rates of return and the variability of pension contributions and fund levels for a defined benefit scheme. *Insurance: Mathematics and Economics*, 20, 115-135.
- Jones, B.L., 1997. Methods for the analysis of CCRC data. *North American Actuarial Journal* 1 (no 2), 40-54.
- Mandl, P. and Mazurová, L., 1996. Harmonic analysis of pension funding methods. *Insurance: Mathematics and Economics* 18, 203-214.
- Marceau, E and Gaillardetz P., 1999. On life insurance reserves in a stochastic mortality and interest rate environment. *Insurance: Mathematics and Economics* 25, 261-280.
- Milevsky, M.A., 1997. The present value of a stochastic perpetuity and the gamma distribution. *Insurance: Mathematics and Economics* 20, 243-250.
- O'Brien, T., 1986. A stochastic dynamic approach to pension funding. *Insurance: Mathematics and Economics*, 5, 141-146.
- O'Brien, T., 1987. A two-parameter family of pension contribution functions and stochastic optimization. *Insurance: Mathematics and Economics*, 6, 129-134.
- Owadally, M.I. and Haberman S., 1999a. Pension fund dynamics and gains/losses due to random rates of investment return. *North American Actuarial Journal*, 3 (no 3), 105-117.
- Owadally, M.I. and Haberman, S., 1999b. Efficient amortization of actuarial gains/losses and optimal funding in pension plans. Under review.

- Panjer, H.H. and Bellhouse, D.R., 1980. Stochastic modelling of interest rates with applications to life contingencies. *Journal of Risk and Insurance* 47, 91-110.
- Parker, G., 1994a. Moments of the present value of a portfolio of policies. *Scandinavian Actuarial Journal*, 53-67.
- Parker, G., 1994b. Limiting distribution of the present value of a portfolio. *ASTIN Bulletin* 24, 47-60.
- Parker, G., 1994c. Stochastic analysis of a portfolio of endowment policies. *Scandinavian Actuarial Journal*, 119-130.
- Parker, G., 1996. A portfolio of endowment policies and its limiting distribution. *ASTIN Bulletin* 26, 25-34.
- Parker, G., 1997. Stochastic analysis of the interaction between investment and insurance risks. *North American Actuarial Journal* 1, (no 2), 55-84.
- Pollard, A.H. and Pollard, J.H., 1969. A stochastic approach to actuarial functions. *Journal of the Institute of Actuaries* 95, 79-113.
- Pollard J.H., 1971. On fluctuating interest rates. *Bulletin of the Royal Society of Belgian Actuaries* 66, 68-97.
- Pollard, J.H., 1976. Premium loadings for non-participating business. *Journal of the Institute of Actuaries* 103, 205-212.
- Renshaw, A.E. and Haberman, S., 1995. On the graduation associated with a multiple state model for permanent health insurance. *Insurance: Mathematics and Economics* 17, 1-17.
- Ross, S.M., 1990. *A Course in Simulation*. Macmillan, New York.
- Vanneste M., Goovaerts, M., De Schepper, A., and Dhaene, J., 1997. A straightforward analytic calculation of the distribution of annuity certain with stochastic interest rates. *Insurance: Mathematics and Economics* 20, 35-41.
- Waters, H.R., 1978. The moments and distributions of actuarial functions. *Journal of the Institute of Actuaries* 105, 61-75.
- Wilkie, A.D., 1995. More on a stochastic asset model for actuarial use. *British Actuarial Journal*, 1, 777-964.
- Zimbidis, A. and Haberman, S., 1993. Delay, feedback and variability of pension contributions and fund levels. *Insurance: Mathematics and Economics* 13, 271-285.

Department of Actuarial Science and Statistics

Actuarial Research Club

The support of the corporate members

Computer Sciences Corporation
Government Actuary's Department
Guardian Insurance
Hymans Robertson
KPMG
Munich Reinsurance
PricewaterhouseCoopers
Swiss Reinsurance
Watson Wyatt

is gratefully acknowledged.

ISBN 1 901615 57 X



DEPARTMENT OF ACTUARIAL SCIENCE AND STATISTICS

Actuarial Research Papers since 1995

70. Huber P. A Review of Wilkie's Stochastic Investment Model. January 1995. 22 pages.
ISBN 1 874 770 70 0
71. Renshaw A.E. On the Graduation of 'Amounts'. January 1995. 24 pages.
ISBN 1 874 770 71 9
72. Renshaw A.E. Claims Reserving by Joint Modelling. December 1994. 26 pages.
ISBN 1 874 770 72 7
73. Renshaw A.E. Graduation and Generalised Linear Models: An Overview. February 1995.
40 pages. ISBN 1 874 770 73 5
74. Khorasane M.Z. Simulation of Investment Returns for a Money Purchase Fund. June 1995.
20 pages. ISBN 1 874 770 74 3
75. Owadally M.I. and Haberman S. Finite-time Pension Fund Dynamics with Random Rates of
Return. June 1995. 28 pages. ISBN 1 874 770 75 1
76. Owadally M.I. and Haberman S. Stochastic Investment Modelling and Optimal Funding Strategies.
June 1995. 25 pages. ISBN 1 874 770 76 X
77. Khorasane M.Z. Applying the Defined Benefit Principle to a Defined Contribution Scheme.
August 1995. 30 pages. ISBN 1 874 770 77 8
78. Sebastiani P. and Settini R. Experimental Design for Non-Linear Problems. September 1995. 13
pages. ISBN 1 874 770 78 6
79. Verrall R.J. Whittaker Graduation and Parametric State Space Models. November 1995.
23 pages. ISBN 1 874 770 79 4
80. Verrall R.J. Claims Reserving and Generalised Additive Models. November 1995. 17 pages.
ISBN 1 874 770 80 8
81. Nelder J.A. and Verrall R.J. Credibility Theory and Generalized Linear Models. November 1995.
15 pages. ISBN 1 874 770 81 6
82. Renshaw A.E., Haberman S. and Hatzopoulos P. On The Duality of Assumptions Underpinning
The Construction of Life Tables. December 1995. 17 Pages. ISBN 1 874 770 82 4
83. Chadburn R.G. Use of a Parametric Risk Measure in Assessing Risk Based Capital and Insolvency
Constraints for With Profits Life Insurance. March 1996. 17 Pages.
ISBN 1 874 770 84 0

84. Haberman S. Landmarks in the History of Actuarial Science (up to 1919). March 1996.
62 Pages. ISBN 1 874 770 85 9
85. Renshaw A.E. and Haberman S. Dual Modelling and Select Mortality. March 1996.
30 Pages. ISBN 1 874 770 88 3
86. Booth P.M. Long-Term Care for the Elderly: A Review of Policy Options. April 1996.
45 Pages. ISBN 1 874 770 89 1
87. Huber P.P. A Note on the Jump-Equilibrium Model. April 1996. 17 Pages.
ISBN 1 874 770 90 5
88. Haberman S and Wong L.Y.P. Moving Average Rates of Return and the Variability of Pension
Contributions and Fund Levels for a Defined Benefit Pension Scheme. May 1996. 51 Pages.
ISBN 1 874 770 91 3
89. Cooper D.R. Providing Pensions for Employees with Varied Working Lives. June 1996.
25 Pages. ISBN 1 874 770 93 X
90. Khorasanee M.Z. Annuity Choices for Pensioners. August 1996. 25 Pages.
ISBN 1 874 770 94 8
91. Verrall R.J. A Unified Framework for Graduation. November 1996. 25 Pages.
ISBN 1 874 770 99 9
92. Haberman S. and Renshaw A.E. A Different Perspective on UK Assured Lives Select Mortality.
November 1996. 61 Pages. ISBN 1 874 770 00 X
93. Booth P.M. The Analysis of Actuarial Investment Risk. March 1997. 43 Pages.
ISBN 1 901615 03 0
94. Booth P.M., Chadburn R.G. and Ong A.S.K. Utility-Maximisation and the Control of Solvency for
Life Insurance Funds. April 1997. 39 Pages. ISBN 1 901615 04 9
95. Chadburn R.G. The Use of Capital, Bonus Policy and Investment Policy in the Control of
Solvency for With-Profits Life Insurance Companies in the UK. April 1997. 29 Pages.
ISBN 1 901615 05 7
96. Renshaw A.E. and Haberman S. A Simple Graphical Method for the Comparison of Two
Mortality Experiences. April 1997. 32 Pages. ISBN 1 901615 06 5
97. Wong C.F.W. and Haberman S. A Short Note on Arma (1, 1) Investment Rates of Return and
Pension Funding. April 1997. 14 Pages. ISBN 1 901615 07 3
98. Puzey A S. A General Theory of Mortality Rate Estimators. June 1997. 26 Pages.
ISBN 1 901615 08 1
99. Puzey A S. On the Bias of the Conventional Actuarial Estimator of q_x . June 1997. 14 Pages.
ISBN 1 901615 09 X
100. Walsh D. and Booth P.M. Actuarial Techniques in Pricing for Risk in Bank Lending. June 1997.
55 Pages. ISBN 1 901615 12 X

101. Haberman S. and Walsh D. Analysis of Trends in PHI Claim Inception Data. July 1997. 51 Pages. ISBN 1 901615 16 2
102. Haberman S. and Smith D. Stochastic Investment Modelling and Pension Funding: A Simulation Based Analysis. November 1997. 91 Pages. ISBN 1 901615 19 7
103. Rickayzen B.D. A Sensitivity Analysis of the Parameters used in a PHI Multiple State Model. December 1997. 18 Pages. ISBN 1 901615 20 0
104. Verrall R.J. and Yakoubov Y.H. A Fuzzy Approach to Grouping by Policyholder Age in General Insurance. January 1998. 18 Pages. ISBN 1 901615 22 7
105. Yakoubov Y.H. and Haberman S. Review of Actuarial Applications of Fuzzy Set Theory. February 1998. 88 Pages. ISBN 1 901615 23 5
106. Haberman S. Stochastic Modelling of Pension Scheme Dynamics. February 1998. 41 Pages. ISBN 1 901615 24 3
107. Cooper D.R. A Re-appraisal of the Revalued Career Average Benefit Design for Occupational Pension Schemes. February 1998. 12 Pages. ISBN 1 901615 25 1
108. Wright I.D. A Stochastic Asset Model using Vector Auto-regression. February 1998. 59 Pages. ISBN 1 901615 26 X
109. Huber P.P. and Verrall R.J. The Need for Theory in Actuarial Economic Models. March 1998. 15 Pages. ISBN 1 901615 27 8
110. Booth P.M. and Yakoubov Y. Investment Policy for Defined Contribution Pension Scheme Members Close to Retirement. May 1998. 32 Pages ISBN 1 901615 28 6
111. Chadburn R.G. A Genetic Approach to the Modelling of Sickness Rates, with Application to Life Insurance Risk Classification. May 1998. 17 Pages. ISBN 1 901615 29 4
112. Wright I.D. A Stochastic Approach to Pension Scheme Funding. June 1998. 24 Pages. ISBN 1 901615 30 8
113. Renshaw A.E. and Haberman S. Modelling the Recent Time Trends in UK Permanent Health Insurance Recovery, Mortality and Claim Inception Transition Intensities. June 1998. 57 Pages. ISBN 1 901615 31 6
114. Megaloudi C. and Haberman S. Contribution and Solvency Risk in a Defined Benefit Pension Scheme. July 1998. 39 Pages ISBN 1 901615 32 4
115. Chadburn R.G. Controlling Solvency and Maximising Policyholders' Returns: A Comparison of Management Strategies for Accumulating With-Profits Long-Term Insurance Business. August 1998. 29 Pages ISBN 1 901615 33 2
116. Fernandes F.N. Total Reward - An Actuarial Perspective. August 1998. 25 Pages. ISBN 1 901615 34 0
117. Booth P.M. and Walsh D. The Application of Financial Theory to the Pricing of Upward Only Rent Reviews. November 1998. 23 Pages. ISBN 1 901615 35 9

118. Renshaw A.E. and Haberman S. Observations on the Proposed New Mortality Tables Based on the 1991-94 Experience for Male Permanent Assurances. February 1999. 40 Pages.
ISBN 1 901615 36 7
119. Velmachos D. And Haberman S. Moving Average Models for Interest Rates and Applications to Life Insurance Mathematics. July 1999. 27 Pages.
ISBN 1 901615 38 3
120. Chadburn R.G. and Wright I.D. The Sensitivity of Life Office Simulation Outcomes to Differences in Asset Model Structure. July 1999. 58 Pages.
ISBN 1 901615 39 1
121. Renshaw A.E. and Haberman S. An Empirical Study of Claim and Sickness Inception Transition Intensities (Aspects of the UK Permanent Health Insurance Experience). November 1999.
35 Pages.
ISBN 1 901615 41 3
122. Booth P.M. and Cooper D.R. The Tax Treatment of Pensions. April 2000. 36 pages.
ISBN 1 901615 42 1
123. Walsh D.E.P. and Rickayzen B.D. A Model for Projecting the number of People who will require Long-Term Care in the Future. Part I: Data Considerations. July 2000. 37 pages.
ISBN 1 901615 43 X
124. Rickayzen B.D. and Walsh D.E.P. A Model for Projecting the number of People who will require Long-Term Care in the Future. Part II: The Multiple State Model. July 2000. 27 pages.
ISBN 1 901615 44 8
125. Walsh D.E.P. and Rickayzen B.D. A Model for Projecting the number of People who will require Long-Term Care in the Future. Part III: The Projected Numbers and The Funnel of Doubt.
July 2000. 61 pages.
ISBN 1 901615 45 6
126. Cooper D.R. Security for the Members of Defined Benefit Pension Schemes. July 2000.
23 pages.
ISBN 1 901615 45 4
127. Renshaw A.E. and Haberman S. Modelling for mortality reduction factors. July 2000.
32 pages.
ISBN 1 901615 47 2
128. Ballotta L. and Kyprianou A.E. A note on the α -quantile option. September 2000.
ISBN 1 901615 49 9
129. Spreeuw J. Convex order and multistate life insurance contracts. December 2000.
ISBN 1 901615 50 2
130. Spreeuw J. The Probationary Period as a Screening Device. December 2000.
ISBN 1 901615 51 0
131. Owadally M.I. and Haberman S. Asset Valuation and the Dynamics of Pension Funding with Random Investment Returns. December 2000.
ISBN 1 901615 52 9
132. Owadally M.I. and Haberman S. Asset Valuation and Amortization of Asset Gains and Losses in Defined Benefit Pension Plans. December 2000.
ISBN 1 901615 53 7
133. Owadally M.I. and Haberman S. Efficient Amortization of Actuarial Gains/Losses and Optimal Funding in Pension Plans. December 2000.
ISBN 1 901615 54 5

134. Ballotta L. α -quantile Option in a Jump-Diffusion Economy. December 2000.
ISBN 1 901615 55 3
135. Renshaw A. E. and Haberman S. On the Forecasting of Mortality Reduction Factors.
February 2001. ISBN 1 901615 56 1
136. Haberman S., Butt Z. & Rickayzen B. D. Multiple State Models, Simulation and Insurer
Insolvency. February 2001. 27 pages. ISBN 1 901615 57 X

Statistical Research Papers

1. Sebastiani P. Some Results on the Derivatives of Matrix Functions. December 1995.
17 Pages. ISBN 1 874 770 83 2
2. Dawid A.P. and Sebastiani P. Coherent Criteria for Optimal Experimental Design.
March 1996. 35 Pages. ISBN 1 874 770 86 7
3. Sebastiani P. and Wynn H.P. Maximum Entropy Sampling and Optimal Bayesian Experimental Design. March 1996. 22 Pages.
ISBN 1 874 770 87 5
4. Sebastiani P. and Settimi R. A Note on D-optimal Designs for a Logistic Regression Model. May 1996. 12 Pages.
ISBN 1 874 770 92 1
5. Sebastiani P. and Settimi R. First-order Optimal Designs for Non Linear Models. August 1996.
28 Pages. ISBN 1 874 770 95 6
6. Newby M. A Business Process Approach to Maintenance: Measurement, Decision and Control.
September 1996. 12 Pages. ISBN 1 874 770 96 4
7. Newby M. Moments and Generating Functions for the Absorption Distribution and its Negative Binomial Analogue. September 1996. 16 Pages.
ISBN 1 874 770 97 2
8. Cowell R.G. Mixture Reduction via Predictive Scores. November 1996. 17 Pages.
ISBN 1 874 770 98 0
9. Sebastiani P. and Ramoni M. Robust Parameter Learning in Bayesian Networks with Missing Data. March 1997. 9 Pages.
ISBN 1 901615 00 6
10. Newby M.J. and Coolen F.P.A. Guidelines for Corrective Replacement Based on Low Stochastic Structure Assumptions. March 1997. 9 Pages.
ISBN 1 901615 01 4.
11. Newby M.J. Approximations for the Absorption Distribution and its Negative Binomial Analogue. March 1997. 6 Pages.
ISBN 1 901615 02 2
12. Ramoni M. and Sebastiani P. The Use of Exogenous Knowledge to Learn Bayesian Networks from Incomplete Databases. June 1997. 11 Pages.
ISBN 1 901615 10 3
13. Ramoni M. and Sebastiani P. Learning Bayesian Networks from Incomplete Databases. June 1997. 14 Pages.
ISBN 1 901615 11 1
14. Sebastiani P. and Wynn H.P. Risk Based Optimal Designs. June 1997. 10 Pages.
ISBN 1 901615 13 8
15. Cowell R. Sampling without Replacement in Junction Trees. June 1997. 10 Pages.
ISBN 1 901615 14 6
16. Dagg R.A. and Newby M.J. Optimal Overhaul Intervals with Imperfect Inspection and Repair. July 1997. 11 Pages.
ISBN 1 901615 15 4
17. Sebastiani P. and Wynn H.P. Bayesian Experimental Design and Shannon Information. October 1997. 11 Pages.
ISBN 1 901615 17 0

18. Wolstenholme L.C. A Characterisation of Phase Type Distributions. November 1997.
11 Pages. ISBN 1 901615 18 9
19. Wolstenholme L.C. A Comparison of Models for Probability of Detection (POD) Curves.
December 1997. 23 Pages. ISBN 1 901615 21 9
20. Cowell R.G. Parameter Learning from Incomplete Data Using Maximum Entropy I: Principles.
February 1999. 19 Pages. ISBN 1 901615 37 5
21. Cowell R.G. Parameter Learning from Incomplete Data Using Maximum Entropy II: Application
to Bayesian Networks. November 1999. 12 Pages ISBN 1 901615 40 5

Department of Actuarial Science and Statistics

Actuarial Research Club

The support of the corporate members

Computer Sciences Corporation
Government Actuary's Department
Guardian Insurance
Hymans Robertson
KPMG
Munich Reinsurance
PricewaterhouseCoopers
Swiss Reinsurance
Watson Wyatt

is gratefully acknowledged.

ISBN 1 901615 57 X