

THE UNIVERSITY OF WARWICK

Original citation:

Trushkevych, Oksana, Fan, Yichao, Perry, Robert and Edwards, R. S. (Rachel S.). (2013) Magnetic phase transitions in Gd₆₄Sc₃₆ studied using non-contact ultrasonics. Journal of Physics D: Applied Physics, Vol.46 (No.10). Article no. 105005.

Permanent WRAP url:

<http://wrap.warwick.ac.uk/53127>

Copyright and reuse:

The Warwick Research Archive Portal (WRAP) makes the work of researchers of the University of Warwick available open access under the following conditions.

This article is made available under the Creative Commons Attribution-NonCommercial-NoDerivs 3.0 Unported (CC BY-NC-ND 3.0) license and may be reused according to the conditions of the license. For more details see: <http://creativecommons.org/licenses/by-nc-nd/3.0/>

A note on versions:

The version presented in WRAP is the published version, or, version of record, and may be cited as it appears here.

For more information, please contact the WRAP Team at: wrap@warwick.ac.uk

warwick**publications**wrap

highlight your research

<http://go.warwick.ac.uk/lib-publications>

Magnetic phase transitions in $\text{Gd}_{64}\text{Sc}_{36}$ studied using non-contact ultrasonics

This article has been downloaded from IOPscience. Please scroll down to see the full text article.

2013 J. Phys. D: Appl. Phys. 46 105005

(<http://iopscience.iop.org/0022-3727/46/10/105005>)

View [the table of contents for this issue](#), or go to the [journal homepage](#) for more

Download details:

IP Address: 137.205.202.160

The article was downloaded on 20/02/2013 at 17:06

Please note that [terms and conditions apply](#).

Magnetic phase transitions in $\text{Gd}_{64}\text{Sc}_{36}$ studied using non-contact ultrasonics

Oksana Trushkevych, Yichao Fan, Robert Perry and Rachel S Edwards

Department of Physics, University of Warwick, Coventry, CV4 7AL, UK

E-mail: o.trushkevych@warwick.ac.uk

Received 9 November 2012, in final form 10 January 2013

Published 13 February 2013

Online at stacks.iop.org/JPhysD/46/105005

Abstract

The speed and attenuation of ultrasound propagation can be used to determine material properties and identify phase transitions. Standard ultrasonic contact techniques are not always convenient due to the necessity of using couplant; however, recently reliable non-contact ultrasonic techniques involving electromagnetic generation and detection of ultrasound with electromagnetic acoustic transducers (EMATs) have been developed for use on electrically conducting and/or magnetic materials. We present a detailed study of magnetic phase transitions in a single crystal sample of $\text{Gd}_{64}\text{Sc}_{36}$ magnetic alloy using contact and non-contact ultrasonic techniques for two orientations of external magnetic field. Phase diagrams are constructed based on measurements of elastic constant C_{33} , the attenuation and the efficiency of generation when using an EMAT. The EMATs are shown to provide additional information related to the magnetic phase transitions in the studied sample, and results identify a conical helix phase in $\text{Gd}_{64}\text{Sc}_{36}$ in the magnetic field orientation $\vec{H} \parallel c$.

(Some figures may appear in colour only in the online journal)

1. Introduction

Magnetic alloys based on rare earth metals have attracted much attention, due to having a variety of magnetic phases [1], and to their potential applications in magnetic refrigeration and thermomagnetic generation [2–4]. Gd and Sc alloys with compositions around $\text{Gd}_{70}\text{Sc}_{30}$ exhibit a variety of phases including paramagnetic, ferromagnetic, basal plane helical, and for certain Sc content a conical helical phase [5, 6] due to the competition between the ferromagnetic ordering of Gd and the helical antiferromagnetic (AF) ordering prevalent in Sc, and to the random distribution of magnetic ions.

The crystalline magnetic alloy $\text{Gd}_{64}\text{Sc}_{36}$ has a hexagonal close packed (hcp) structure, and was previously studied using neutron diffraction in zero applied magnetic field [5]. This alloy is paramagnetic above the Néel temperature, $T_N = 140$ K, and at lower temperatures exhibits a basal helical AF phase with a complex behaviour of the temperature-dependent helimagnetic angle. Magnetic field-induced phases were previously studied for an external magnetic field \vec{H}

applied in the *ab* (basal) plane [7], with the measured phase diagram shown in figure 1. At temperatures below T_N , $\text{Gd}_{64}\text{Sc}_{36}$ undergoes a first-order phase transition from helix to fan phase between 0.4 and 0.6 T, and a second-order transition to a field-aligned ferromagnetic phase around 1.6 T [7].

The magnetic phase behaviour when \vec{H} is applied parallel to *c* is unknown until now; the sample exists in an AF helix phase at $T < T_N$ when unperturbed by a magnetic field, and one would expect a field-induced ferromagnetic phase at high magnetic fields. At intermediate fields intermediate phases may exist [5]. Note that, for this field orientation no first-order transition is expected as the magnetic moments for the AF helix arrangement are in the basal plane and perpendicular to the field, and can therefore be continuously rotated to align with the field.

Ultrasonic measurements are known to be a powerful tool for studying structural and magnetic phase transitions [5–9]; elastic constants and attenuation values can be extracted from these measurements, and these link to fundamental sample properties. At phase transitions these parameters exhibit anomalies associated with critical phenomena, and transitions are typically accompanied by a softening of certain elastic constants and hence an increase in attenuation. By choosing an appropriate direction of propagation, wave type (e.g. shear or



Content from this work may be used under the terms of the Creative Commons Attribution-NonCommercial-ShareAlike 3.0 licence. Any further distribution of this work must maintain attribution to the author(s) and the title of the work, journal citation and DOI.

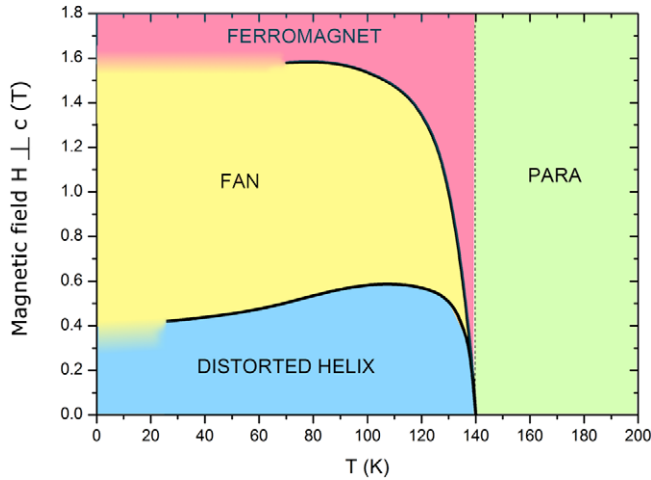


Figure 1. Phase diagram of $Gd_{64}Sc_{36}$ crystalline magnetic alloy for $\vec{H} \perp c$, adapted from da Silva *et al* [7].

longitudinal) and polarization, different elastic constants and anisotropy can be probed [8, 9].

Conventional ultrasonic measurements use piezoelectric transducers such as quartz or PZT to generate and detect ultrasound; however, these require the use of couplant and direct physical contact with the sample [5–8], and with repeated thermal cycling the coupling between the transducer and the sample may quickly deteriorate. Electromagnetic acoustic transducers (EMATs) [10–12] offer a number of advantages, being non-contact, with narrowband or broadband operation possible through careful transducer design, and have previously been successfully employed to study phenomena such as giant quantum oscillations [13] and magnetic phase transitions [14, 15], as well as being common in non-destructive testing applications [16].

In this paper, we use both standard (contact quartz) and non-contact (EMAT) transducers to study magnetic phases in $Gd_{64}Sc_{36}$ in a temperature range 4–300 K and for applied magnetic fields of up to 4 T, for two orientations of magnetic field, oriented in the basal plane or parallel to the c -axis. We compare the EMAT efficiency behaviour with previously studied systems [17–19], give a detailed phase diagram for $\vec{H} \parallel c$, and suggest a correction to the phase diagram for $\vec{H} \perp c$ from [7].

1.1. EMAT operation

EMATs consist of a coil of wire and an applied (bias) magnetic field, and their design has been described in detail elsewhere [13, 15, 16]. A current is pulsed through the coil, leading to a time-varying magnetic field, and when placed near a sample a mirror current or magnetization change may occur within the sample; ultrasonic generation is therefore within the sample itself, rather than within the transducer.

In magnetic alloys there are two possible mechanisms for EMAT generation and detection; the Lorentz force and magnetostrictive force mechanisms [10, 17, 20, 21]. In contrast to piezoelectric transducers, which detect either longitudinal or shear waves, the same EMAT can generate and detect shear and longitudinal waves depending on the

experimental configuration (coil design and magnetic field direction) and the sample’s magnetic state [20]. When generation is by the Lorentz force mechanism, the efficiency scales linearly with the applied magnetic field [20]. However, when generation and detection are solely by magnetostriction, the efficiency of the EMATs depends on the magnetization and magnetostriction constant of the material under investigation. For a magnetic field-induced paramagnetic to ferromagnetic transition, the efficiency usually peaks around the phase transition [17].

The efficiency of electromagnetic ultrasonic generation has been studied in various materials, including the rare-earths Tb, [22] Gd, [23] and Er [19]. In these studies the efficiency was found to peak or change abruptly at phase transitions, with a possible explanation for the increase in efficiency as being due to the increased mobility of the spin subsystem close to a magnetic phase transition [17]. A phase diagram consisting of multidomain, canted and collinear (field-aligned ferromagnetic) and paramagnetic phases for pure Gd was previously suggested based solely on the efficiency of EMAT generation [23]. The authors specified two contributions to the EMAT efficiency; one from a paraprocess (orientation in magnetic field of spins that are not aligned in the direction of the resultant magnetization, due to thermal motion) and another from a spin-flip process.

Buchel’nikov and Vasiliev [17] gave an extensive review of EMAT generation of ultrasound and, in particular, discussed the generation of longitudinal waves due to magnetostriction in a monocrystalline ferromagnet with an hcp lattice, in both the paramagnetic and ferromagnetic phases. Assuming that the magnetic permeability of the material, $\mu = \mu_0(1 + \chi)$, is large compared with the magnetoelastic interaction parameter $\xi = \gamma^2 M^2 \chi / \rho v_l^2$ (where μ_0 is the magnetic permeability of vacuum, χ is the magnetic susceptibility, γ is the magnetostriction constant, M is the magnetization, ρ is the mass density and v_l is the speed of longitudinal sound waves), the efficiency of ultrasonic generation is given by

$$\eta \sim \frac{\chi_0 \sin^2 \Phi \cos^4 \Phi}{(1 + 4\pi \chi_0 \cos^2 \Phi)^2}, \quad \chi_0 = \frac{gM}{\omega_2}, \quad (1)$$

where A is a constant, Φ is the azimuthal magnetization angle, $\chi = \chi_0 \cos^2 \Phi$, ω_2 is the frequency of precession of the magnetization and describes the antiphase azimuthal oscillations (as expected in the system studied here), g is the magnetomechanical factor and M is the magnetization [17]. The dependence on the applied magnetic field is through $\omega_2(H)$ and $\Phi(H)$. ω_2 reaches a minimum at the phase transition, hence the susceptibility χ_0 reaches a maximum; however, $\sin^2 \Phi$ in the numerator of equation (1) tends to zero as the angle approaches either 0 or $\pi/2$, hence the maximum generation efficiency for the paramagnetic to ferromagnetic transition is obtained near $\Phi = \arcsin \frac{1}{\sqrt{3}} \approx 35^\circ$ [17].

The EMAT efficiency in single crystal hcp ferromagnets exhibiting helical and fan phases, with external magnetic field applied in the basal plane, has been compared for theoretical and experimental results on Dy [18]. For an hcp crystal with an ultrasonic wave propagating along the b -axis, an external

field applied in the basal plane, and an EMAT producing an oscillating magnetic field parallel to the a -axis, it was found that in weak external magnetic fields the EMAT efficiency for longitudinal and shear-wave generation is given by $\eta \sim M^2$, which is proportional to the magnetic field intensity, and remains small at weak fields. In strong external magnetic fields only a shear wave was generated, with $\eta \sim \chi^2 M^2$; both χ and M depend on H , with χ decreasing and M increasing with increasing H . In the intermediate field regime the authors predicted that the efficiency should first peak, and then decrease as the field is further increased into the strong field regime [18], with a strong peak in EMAT efficiency around the helical–fan phase transition due to domain wall displacements between the fan and helical phase regions.

2. Experimental details

The experimental setup and automated data collection and handling has been described in detail in [15], and is summarized here. The ultrasonic measurements were carried out in a pulse-echo configuration [8, 15] using a MATEC 6600 pulse generator-receiver, a commercially available X-cut quartz transducer and a custom-designed EMAT. The EMAT coil was of the single layer spiral (pancake) type, 4.5 mm in diameter, wound using 0.14 mm diameter enamel-coated copper wire. Temperature and magnetic field control were provided by an Oxford Instruments cryostat and superconducting magnet system, with the magnetic field applied to the sample acting as a bias magnetic field for the EMAT. Sample temperature was measured using a Cernox probe in thermal contact with the sample. Despite relatively high peak output power, EMATs can be used for low-temperature measurements without causing significant problems with heating, because of their low duty cycle [15, 20]. The base temperature during experiments did not differ, within errors, for generation by quartz or EMAT.

A single crystal of $\text{Gd}_{64}\text{Sc}_{36}$ was cut to a cuboid of dimensions $4.44 \times 5.06 \times 4.21 \text{ mm}^3$ with faces parallel to the main crystallographic directions. An X-cut quartz transducer and an EMAT were placed on opposite sides of the sample, for longitudinal-wave propagation along the crystal c -axis, with the quartz transducer bonded to the sample using IMI 7031 varnish which also served as a coupling layer. The EMAT was placed in close proximity to the sample, and the change in liftoff between EMAT and sample was negligible during the measurements.

Longitudinal waves at a frequency of approximately 15 MHz were propagated along the c -axis of the crystal, probing the C_{33} elastic constant [8, 7]. This acoustic mode changes interatomic spacing along the c -axis and thus is strongly coupled to the magnetic structure, and is particularly sensitive to magnetic phase transitions [7]. The generation and detection of ultrasound in each measurement were done using either the quartz or EMAT. A low-pass filter and averaging were used in all configurations to improve the signal-to-noise ratio. Data collection and offline analysis were automated using LabVIEW. Three parameters were monitored at different magnetic fields and temperatures; elastic constant

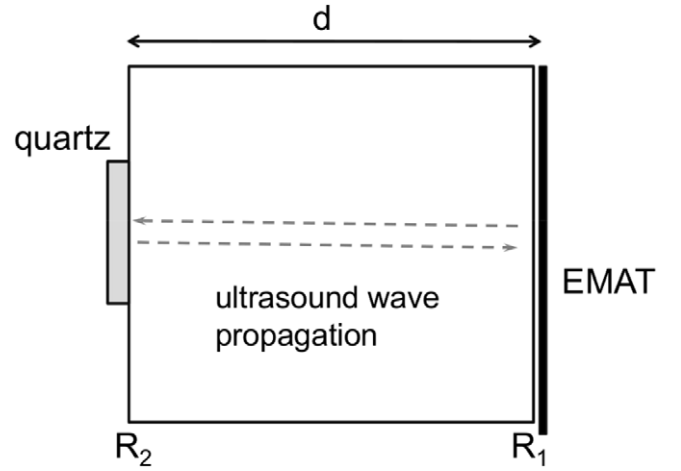


Figure 2. Experimental arrangement of quartz and EMAT transducers on the sample. R_i —reflection coefficients from the corresponding faces of the sample.

C_{33} , attenuation of ultrasound and the efficiency of ultrasound generation (for EMAT only). The elastic constant was obtained by measuring the time between echoes using cross-correlation of the first echo with the echo train to improve precision [15, 24]. Attenuation was obtained by fitting echo amplitudes to an exponential decay curve.

3. Attenuation of ultrasound using different transducer-types

Attenuation measurements using contact and non-contact ultrasonic methods can be described mathematically in the following way. Consider a measurement with a quartz transducer and an EMAT on opposite sides of a sample, where R_1 is the reflection coefficient for a longitudinal wave from the face near the EMAT and R_2 is the reflection coefficient from the face to which the quartz transducer is coupled (figure 2). These coefficients account for scattering and other losses, including losses within the coupling layer for the quartz transducer. As the thickness of the coupling layer is very much less than the ultrasound wavelength, only one reflection from the interface with the quartz is considered. The amplitude of the first echo, $A_1^{(q,e)}$, for quartz or EMAT generation respectively, can be written as

$$\begin{aligned} A_1^q &= K_q G_q D_q R_1 (1 - R_2) e^{-\alpha 2d} \\ A_1^e &= K_e G_e D_e R_2 e^{-\alpha 2d} \end{aligned} \quad (2)$$

where $K_{q,e}$ is the measurement system amplification, α is the absolute attenuation in the sample, d is the sample thickness, $G_{q,e}$ and $D_{q,e}$ are the generation and detection efficiency, and $(1 - R_2)$ is the approximate transmission through the coupling layer. The amplitude of the second echo is

$$\begin{aligned} A_2^q &= K_q G_q D_q R_1^2 R_2 (1 - R_2) e^{-\alpha 4d} = A_1^q R_1 R_2 e^{-\alpha 2d}, \\ A_2^e &= K_e G_e D_e R_1 R_2^2 e^{-\alpha 4d} = A_1^e R_1 R_2 e^{-\alpha 2d}. \end{aligned} \quad (3)$$

By fitting experimental echo amplitudes to an exponential decay, the experimental attenuation $\alpha'_{q,e}$ is obtained:

$$A_2^{q,e} = A_1^{q,e} e^{-\alpha'_{q,e} 2d}. \quad (4)$$

This measured attenuation relates to the absolute attenuation via

$$\alpha = \alpha'_{q,e} - \frac{1}{2d} \ln \left(\frac{1}{R_1 R_2} \right). \quad (5)$$

For the case of a fully non-contact measurement, the reflection coefficients can be calculated from the acoustic impedances of $\text{Gd}_{64}\text{Sc}_{36}$ and air, and are $R_1 = R_2 = 0.99989$, hence the second term in equation (5) is $\ll \alpha'_e$, and the measured attenuation in the sample using solely an EMAT is close to the absolute attenuation. When using contact methods the reflection losses are non-negligible; in the case of a quartz transducer coupled to the sample with IMI 7031 varnish, the reflection coefficient R_2 may be as low as 0.7, and the correction factor in (5) can be of the same magnitude or higher than α'_q . Moreover, the coupling, which is related to the acoustic impedances between the sample, the coupling agent and the quartz transducer, changes as the speed of sound changes [8]. Hence, non-contact EMAT measurements are essential when absolute attenuation is required.

A further difference between measured attenuations (with effects shown in figures 4(b) and (e)) exists due to the relative size of the quartz transducer (diameter 2 mm) and the EMAT (diameter ≈ 4 mm). If the acoustic beam diverges, reflections will not be fully collected by the quartz transducer, resulting in a larger attenuation being measured by the quartz transducer (figure 2). The directivity of a source with diameter a (the largest angular beamwidth) is $\sin \theta = 0.61\lambda/a$ [9]. For a 2 mm diameter transducer operating at 15 MHz this corresponds to an angle of 4° . The diameter of the beam at the transducer for the first echo expands to 3.17 mm, and 4.35 mm for the second echo, hence there is a difference in the diameter of about 1.4. Assuming an equal energy distribution across the whole beam, the energy density at the transducer for the detection of the first echo is thus 1.96 times lower, and the detected amplitude 1.4 times lower than would be detected by a large area transducer, and

$$A_2^q = \frac{1}{1.4} A_1^q R_1 R_2 e^{-\alpha 2d},$$

$$\alpha = \alpha'_q - \frac{1}{2d} \ln \left(\frac{1.4}{R_1 R_2} \right). \quad (6)$$

Following these considerations, a difference between the attenuation measured by EMAT and quartz transducers of the order of 40 Np m^{-1} is estimated. Larger differences may be due to poor electrical contact to quartz transducer and associated losses.

The efficiency of electromagnetic generation of ultrasound can be defined in various ways (see, for example, [20]); here we define the EMAT efficiency as the initial generated ultrasonic amplitude, calculated using the amplitude of the first analysed echo and the attenuation. EMAT detection is similar, but not identical, to generation; in ultrasonic generation the accelerated electrons are moving much heavier ions, while in detection the ions are moving electrons [16], and hence the detection is significantly more efficient. For an efficiency difference governed by a factor of β , from equations (2) and (5)

one obtains

$$G_e = \sqrt{\frac{1}{\beta K_e R_2} A_1^e e^{2\alpha d}} = \sqrt{\frac{R_1}{\beta}} \sqrt{\frac{A_1^e e^{2\alpha'_e d}}{K_e}}. \quad (7)$$

The system amplification K_e is weakly dependent on EMAT impedance, which may change at a phase transition. This effect cannot be decoupled from the change in EMAT efficiency, but is very weak compared with the overall efficiency and should not impede identification of a phase transition. Importantly, the unknown coupling to the quartz and the associated reflection R_2 is not present in this equation, while R_1 , representing reflection from the face near the EMAT, changes negligibly over the phase transition. Hence, the first multiplier can be approximated as a constant, and $\eta_e = \sqrt{A_{1\text{exp}}^e e^{2\alpha'_e d}}$, where the experimental value of the amplitude of the first echo includes amplification by the system, $A_{1\text{exp}}^e = A_1^e / K_e$.

4. Results and discussion

In experimental configurations with $\vec{H} \parallel c$ and $\vec{H} \perp c$, predominantly longitudinal-wave EMAT generation was observed, with some generation and detection at zero applied magnetic bias field (see figure 3), characteristic of generation via the magnetostrictive mechanism. Longitudinal waves will be generated in electrically conducting samples via the self-field mechanism, where a Lorentz force is generated due to the time-varying magnetic field from the current pulse, irrespective of a bias field [21]. The self-field is always perpendicular to the sample surface and the coil, and it can be sufficiently large to generate ultrasound in some materials. This effect will also generate ultrasound through magnetostriction for zero bias field. The detection of ultrasound for zero bias field is possible only through the magnetostriction mechanism [18].

When a bias field in the direction $\vec{H} \parallel c$ is applied, the Lorentz force for this EMAT configuration should generate a shear wave with an amplitude linearly dependent on the field magnitude. No such behaviour was observed due to the sample's relatively high resistivity ($1040 \text{ n}\Omega \text{ m}$, about 37 times higher than that of aluminum). Hence, EMAT generation and detection were predominantly through the magnetostrictive mechanism.

Figure 3 shows typical echoes (signal amplitude versus time) obtained using the (a) quartz or (b) EMAT transducer, for different values of the applied magnetic field ($\vec{H} \parallel c$) at 30 K. For measurements using the quartz transducer there are only small changes in the waveform shape as the magnetic field is increased, and the amplitude of the signal is similar for all traces (allowing for different attenuation). For EMAT measurements the amplitude of the signal changes dramatically between different phases, and in some magnetic phases the EMATs can generate and detect longitudinal and shear waves at the same time [18]. As magnetic field is increased, interference of the second and fourth echo of the longitudinal wave occurs due to a wave propagating at about half the speed of the main mode, corresponding to a shear wave. At 0.45 T this interference is particularly strong (middle trace in figure 3(b)), with the second shear echo, interfering with

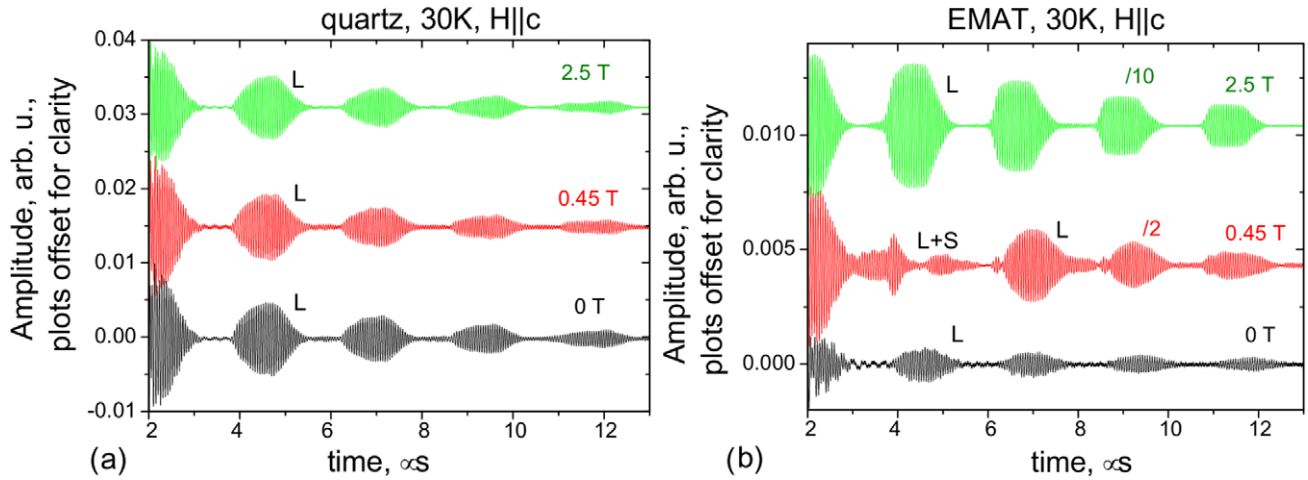


Figure 3. Ultrasound waveforms: echoes propagating along the c -axis for (a) quartz transducer and (b) EMAT generation and detection, $\vec{H} \parallel c$ and $T = 30$ K. The amplitude of the EMAT signals has been scaled as indicated above the traces.

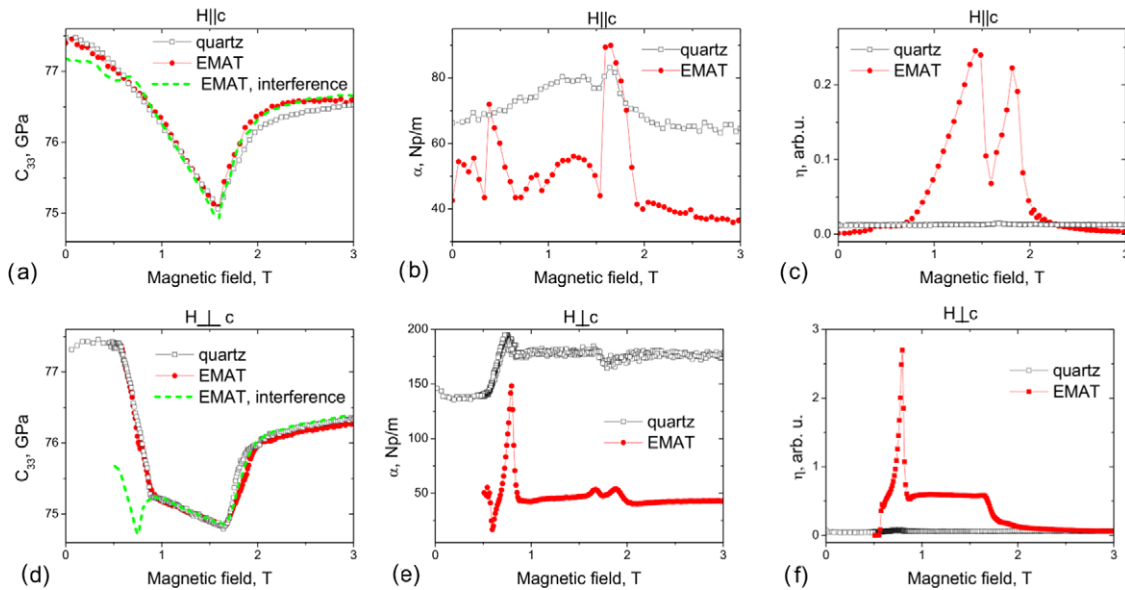


Figure 4. Field dependence of elastic constant C_{33} (a), (d), attenuation α (b), (e) and efficiency η (c), (f) with $\vec{H} \parallel c$ (a)–(c) and $\vec{H} \perp c$ (d)–(f) at 100 K, measured using either the quartz transducer or the EMAT for both generation and detection.

the fourth longitudinal echo, becoming very small, due to either a large attenuation of this wave, as expected at a phase transition, or a large change in the shear-wave velocity. Because of the interference, the attenuation and the EMAT efficiency were calculated by taking into account only echoes not visibly affected by the interference. The elastic constant was calculated with and without the interference to allow assessment of where the maximum interference due to this phase transition occurred.

At higher magnetic fields the shear wave is no longer observed. The maximum amplitude of the shear wave will occur close to the phase transitions, as the spin subsystem becomes more mobile and more susceptible to external perturbations [17]. In the fan or conical helix phases the generation efficiency for the longitudinal wave grows dramatically, and the shear wave may simply no longer be noticeable. Also, by analogy with [18], the shear wave may no longer be generated in the high-field regime. This could

be confirmed through use of a shear-wave transducer, such as y-cut quartz, for detection with EMAT generation in the high-field regime.

Figures 4(a) and (d) show the elastic constant as a function of magnetic field for $\vec{H} \perp c$ (a) and $\vec{H} \parallel c$ (d) at 100 K. Open symbols represent measurements using the quartz transducer while closed show EMAT measurements calculated without the interfering echo. As expected, both measurements yield similar results. Two phase transitions can be seen for $\vec{H} \perp c$; at about 0.75 T a first-order phase transition between the helix and the fan phases manifests itself as a near-step change in the elastic constant. The field at which the transition occurs can be identified by a maximum in the first derivative of the slope of C_{33} , which also coincides with a peak in the attenuation (figure 4(e)) and the EMAT generation efficiency (figure 4(f)). At 1.65 T another phase transition, the second-order transition between the fan and the field-aligned ferromagnetic phases, can be observed as another significant change in the elastic

constant. For $\vec{H}\parallel c$ (figure 4(a)) only one phase transition at about 1.6 T is clear in C_{33} , corresponding to the second-order phase transition into the field-aligned ferromagnetic phase.

The dashed lines in figures 4(a) and (b) show the elastic constant calculated when including the echo which suffers from the interference. The interference influences the measured time of arrival of echoes, and thus also affects the experimentally obtained elastic constant; this is no longer the true elastic constant, but now shows strongly the position of this lower-field phase transition. For $\vec{H}\perp c$ the largest error occurs at the phase transition between the helix and fan phases (figure 4(d)) [17]. For $\vec{H}\parallel c$ the maximum interference occurs at the same field that the EMAT generation efficiency starts to increase (figure 4(e)), indicating a phase transition, and the dip in the dashed line in figure 4(a) in the EMAT measurements was therefore also used as a phase transition point. Note that this transition cannot be seen by a quartz transducer measuring longitudinal waves propagating along the c -axis.

The attenuation as measured by the two techniques (figures 4(b) and (e)) shows some differences, which can be explained using the discussion in section 3. In the measurements using the quartz transducer, the attenuation is large compared with that for the EMAT. This is due to the losses associated with the contact measurement, including losses within the couplant, and due to the smaller size of the quartz transducer. For $\vec{H}\perp c$, the features in the attenuation measured using the quartz and the EMAT are similar; the first large peak at 0.75 T and a second feature (a step-like change for quartz measurements and the first of the small peaks for EMAT measurements) were chosen as identifiers of the phase transitions based on the expectations from theory [8] and with the knowledge of the elastic constant. For $\vec{H}\parallel c$ only one significant peak in attenuation is observed in the measurement using quartz, identifying just one phase transition. In the EMAT measurements the attenuation has an additional feature at 0.45 T. Although the echo that was visibly affected by the interference was not taken into consideration here, some residual interference with the shear wave may be responsible for this peak. The peak correlated well with the interference-related dip in the elastic constant, and was hence used to determine the phase transition.

As expected, the changes in efficiency of quartz generation and coupling are extremely small and give no useable indication of sample property changes. However, the efficiency of EMAT generation has clear features that coincide with the phase transitions (figures 4(c) and (f)). For $\vec{H}\perp c$ the large peak in EMAT efficiency at 0.7 T corresponds to the first-order transition from the helix to fan phase. The efficiency stays high in the fan phase and decreases as the sample enters the field-aligned ferromagnetic phase, remaining relatively high. This is similar to the behaviour of the efficiency in Dy [18].

For $\vec{H}\parallel c$ the efficiency displays very different behaviour. At low magnetic fields the efficiency increases slowly, with a clear onset of significant growth used as the point of entry into the conical helix phase. In this phase the efficiency is relatively high and continues to improve. The transition to the field-aligned ferromagnetic phase is marked by a dip in the

efficiency. This behaviour may be understood as follows; at the transition, the magnetic susceptibility peaks [17]. The system therefore becomes more susceptible to the external magnetic field, the magnetic moments align strongly along the c -axis, and the self-field produced by the EMAT is no longer able to make a large impact. This could be described by a drop in magnetostriction constant at the phase transition. As the susceptibility decreases past the phase transition point and the alignment becomes less rigid, higher EMAT efficiencies are observed. As the field is further increased and the sample enters deeper into the ferromagnetic phase the efficiency of generation approaches zero, as the magnetic moments become fully aligned along the c -axis and the magnetic field produced by the EMAT no longer has any impact on the sample. The dip in the efficiency at the phase transition to the ferromagnetic phase is not observed for $\vec{H}\perp c$ because in this geometry the EMAT efficiently generates ultrasound in the field-aligned phase, so a change in the alignment of magnetic moments due to an increase in susceptibility at a phase transition does not introduce a significant difference to the efficiency.

The phase diagrams for the two field orientations using all of the above measurements have been mapped and are shown in figure 5. The positions for decreasing magnetic field show a very small hysteresis, but otherwise match those for increasing magnetic field, and have therefore been omitted. Vertical error bars (magnetic field) represent the uncertainty in defining the transition. The error in temperature was calculated individually for each point, and was typically ± 0.1 K, smaller than the symbol size in the figure.

The phase diagram for $\vec{H}\perp c$ is consistent with the previous study using contact ultrasonic methods [7], moreover, we also detect a transition from the paramagnetic to the field-aligned ferromagnetic phase above T_N .

4.1. Electromagnetic generation efficiency

Figure 6 shows the dependence of the efficiency of ultrasound generation on magnetic field and temperature when using the EMAT. Note the resemblance between the maps of the efficiency of ultrasound generation using EMATs (figure 6) and the phase diagrams (figure 5). As is apparent from figure 6, ultrasound generation using an EMAT has a clearly defined region of high efficiency (white, red and yellow area) for each field orientation. For $\vec{H}\perp c$ this high efficiency region corresponds to the fan phase. For $\vec{H}\parallel c$, the high efficiency region corresponds to the conical helix phase, as discussed above. As the temperature increases to T_N , the efficiencies in the fan and conical helix phases decrease while the efficiency in both field-aligned ferromagnetic phases grows. This behaviour of the efficiency for the ferromagnetic phases induced by the applied magnetic field is because magnetostriction tends to zero when magnetic moments make a zero or π angle to the longitudinal ultrasound propagation direction [17]. The increase in the efficiency with temperature is due to the increase in thermal fluctuations of magnetic moments, making the the angle between the moments and the generating field deviate from the unfavourable 0 or π .

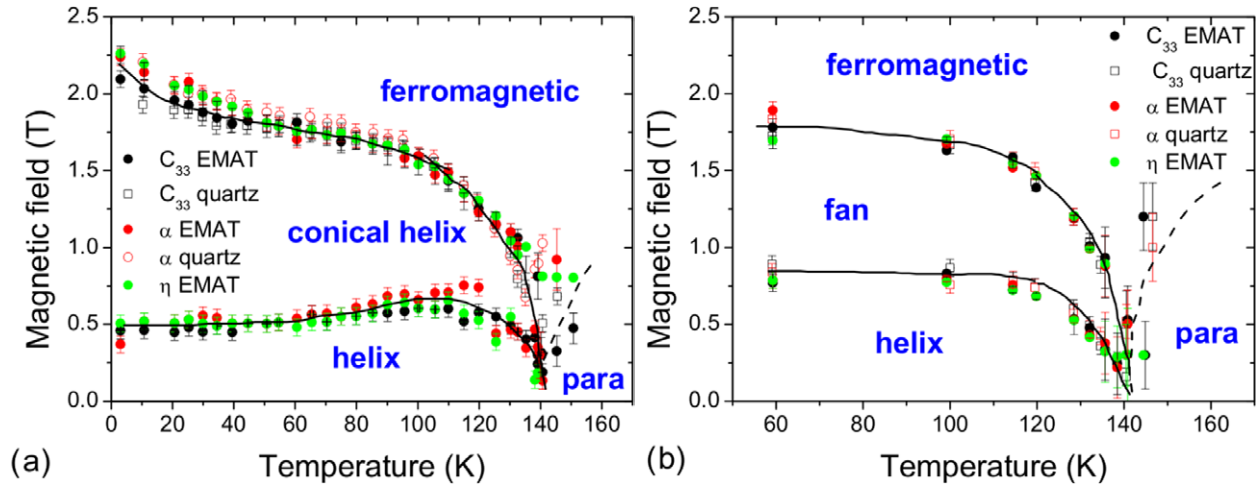


Figure 5. Phase diagram of magnetically induced phases in $Gd_{64}Sc_{36}$ with the magnetic field (a) $\vec{H} \parallel c$ and (b) $\vec{H} \perp c$.

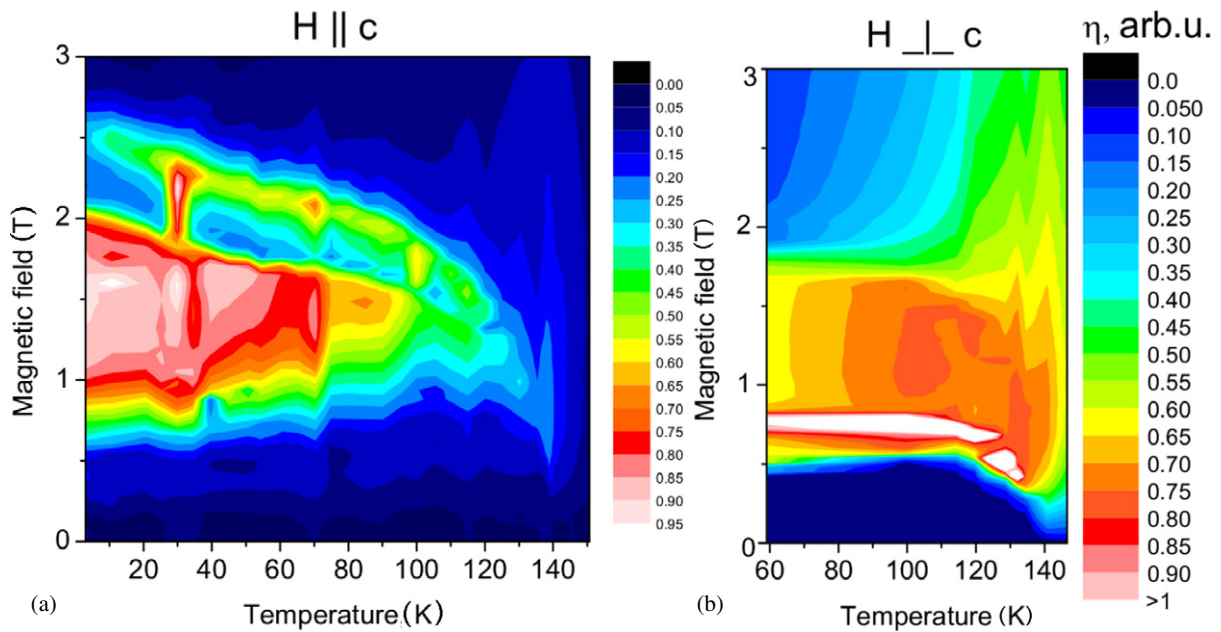


Figure 6. The efficiency η of longitudinal ultrasound generation for the two orientations of magnetic field. The colour scale is the same on both graphs.

4.2. Demagnetization and magnetic anisotropy

Consider a transition to the field-aligned ferromagnetic phase. The magnetic field at which the transition occurs (critical field) indicates how difficult it is to align magnetic moments in the direction of the applied magnetic field, and the value of the critical field will be influenced by the properties of the crystal and by demagnetization. The effective field inside the sample is given by $H_{\text{eff}} = H_a - H_d$, where H_a is the applied field, $H_d = NM$ is the demagnetizing field and N is the demagnetizing factor. The demagnetization factor for a cuboid depends on the magnetic susceptibility as well as the sample shape [25]. Using magnetization measurements by daSilva *et al* [7] for $\mu_0 \vec{H}_{\perp c} = 1$ T, the magnetization in the basal plane ranges from $2.1 \mu_B$ per Gd atom in the ferromagnetic phase to $6 \mu_B$ per Gd atom in the fan phase in the temperature range from 5 to 141 K. Converting this to volume

magnetization following an iteration procedure described in [25], the corresponding magnetic susceptibility of $Gd_{64}Sc_{36}$ ranges from $\chi = 0.51$ in the ferromagnetic phase just above T_N , to $\chi = 1.56$ in the fan phase at 5 K.

The sample studied here is a cuboid and has large demagnetization factors, shown in table 1 for 1 T applied magnetic field. If susceptibility were the same for directions parallel and perpendicular to the c -axis, the demagnetization factors and fields would be essentially identical for external magnetic fields applied parallel and perpendicular to c . However, the crystal is anisotropic and susceptibility and magnetization are expected to be lower along c . Therefore, the demagnetizing field is expected to be smaller for $\vec{H} \parallel c$ compared with for $\vec{H} \perp c$; $H_{\text{eff}}^{\parallel} = H_a^{\parallel} - H_d^{\parallel}$, $H_{\text{eff}}^{\perp} = H_a^{\perp} - H_d^{\perp}$, and $H_{\text{eff}}^{\parallel} > H_{\text{eff}}^{\perp}$, with $H_d^{\parallel} < H_d^{\perp}$.

One would expect a critical field H_{eff}^{\perp} (effective field inside the sample) for the transition to field-aligned ferromagnetic

Table 1. Demagnetization of Gd₆₄Sc₃₆ cuboidal sample for $\mu_0 \vec{H}_{\perp c} = 1$ T using magnetization measurements by daSilva *et al* [7].

T(K)	$\vec{H}_{\perp c}$			$\vec{H}_{\parallel c}$	
	χ	N	$\mu_0 H_d$	N	$\mu_0 H_d$
5	1.607	0.308	0.44 T	0.309 ^a	0.44 T ^a
100	1.093	0.315	0.32 T	0.315 ^a	0.32 T ^a
120	0.851	0.319	0.26 T	0.319 ^a	0.26 T ^a
141	0.514	0.324	0.16 T	0.324 ^a	0.16 T ^a

^a Assuming similar χ and M as in $\vec{H}_{\perp c}$.

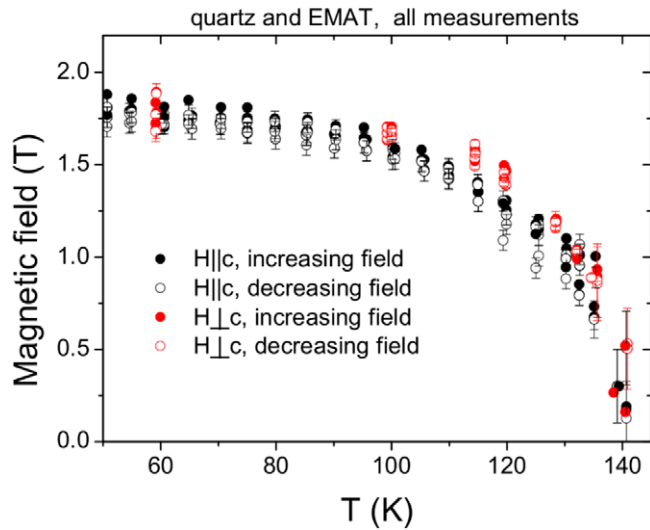


Figure 7. Critical field for the transition to the ferromagnetic phase for magnetic field orientations in the easy magnetization plane ($\vec{H}_{\perp c}$, red markers) and perpendicular ($\vec{H}_{\parallel c}$, black markers), on increasing and decreasing magnetic field (solid and empty markers correspondingly) as determined by elastic constant, attenuation and EMAT efficiency.

phase for $\vec{H}_{\perp c}$ to be lower than $H_{\text{eff}}^{\parallel}$ for $\vec{H}_{\parallel c}$, because it is easier to magnetize the crystal perpendicular to the c -axis. Figure 7 shows that the transition to the ferromagnetic phase for $\vec{H}_{\perp c}$ is at the same field or slightly higher than for $\vec{H}_{\parallel c}$. These results are consistent for the quartz and EMAT measurements on both increasing and decreasing field. Hence, the effects on the critical fields for the transition to the field-aligned ferromagnetic phase for $\vec{H}_{\perp c}$ and $\vec{H}_{\parallel c}$, due to demagnetization factors and magnetic anisotropy, nearly cancel each other out, and $H_a^{\perp} \approx H_a^{\parallel}$, with a small difference of 0.15 T.

5. Conclusions

Magnetic phase transitions in a Gd₆₄Sc₃₆ alloy were studied using two different ultrasonic techniques, the conventional method using contact transducers (quartz), and using electromagnetic techniques (EMATs). Results using quartz and EMAT transducers are consistent with a previous study for $\vec{H}_{\perp c}$ using contact ultrasonic techniques [7]. We suggest a correction to the earlier reported phase diagram, with a second-order phase transition from paramagnetic to field-aligned ferromagnetic phase above the Néel temperature (140 K).

The behaviour for $\vec{H}_{\parallel c}$ has been studied for the first time, and for this orientation the intermediate phase between the helix and the field-aligned ferromagnetic phases was identified using EMAT measurements, based on attenuation, elastic constants and efficiency maps, and was assigned to a conical helix phase. This phase transition between helix and conical helix was not detected when using a quartz transducer, which can only probe propagation of one wave type along the c -axis. The EMAT techniques are therefore more sensitive to this phase transition, and potentially to other magnetic phase transitions, as they can generate and detect longitudinal and shear waves simultaneously, and because the efficiency of EMAT generation through magnetostriction depends strongly on the magnetic state of a material.

EMAT efficiency maps correlate very well with the phase diagrams for the two magnetic field orientations. The efficiency of generation and detection of ultrasound is highest in the fan phase, closely followed by the conical helix phase (figure 6). This is consistent with the magnetostriction mechanism and magnetization of the sample and is unique to EMAT generation of ultrasound, and offers insights into the magnetic ordering in the material.

Electromagnetic generation and detection of ultrasound is non-contact, which is particularly important for fragile samples or measurements which require repeated thermal cycling, is suitable for use at cryogenic temperatures, and potentially allows an absolute attenuation measurement in regions where only one dominant mode is produced. In magnetostrictive samples EMAT generation and detection offer a different way for mapping phase transitions through monitoring the generation efficiency, which is closely related to magnetization and magnetic phase changes in the materials. This is a fast and simple tool for studying phase transitions in magnetic materials.

Acknowledgments

This work was funded by the ERC under grant 202735, NonContactUltrasonic and EPSRC under grant EP/1031979/1, Automated non-contact ultrasonic measurements of single crystals. We would also like to thank A R Clough, D Cleanthous, I J Moore and D J Backhouse for their help with developing and automating the experimental setup. We are grateful to T Orton for excellent technical support.

References

- [1] Hughes I D, Dane M, Ernst A, Hergert W, Luders M, Poulter J, Staunton J B, Svane A, Szotek Z and Temmerman W M 2007 Lanthanide contraction and magnetism in the heavy rare earth elements *Nature* **446** 650–3
- [2] Elliott J F 1959 Thermomagnetic generator *J. Appl. Phys.* **30** 1774–7
- [3] Hsu C-J, Sandoval S M, Wetzlar K P and Carman G P 2011 Thermomagnetic conversion efficiencies for ferromagnetic materials *J. Appl. Phys.* **110** 123923
- [4] Sandeman K G 2012 Magnetocaloric materials: the search for new systems *Scr. Mater.* **67** 566
- [5] Melville R J, Bates S, Sousa J B and Palmer S B 1988 The magnetic structure of Gd-Sc alloys *Europhys. Lett.* **6** 725

- [6] Salgueiro da Silva M, Moreira J M, Mendes J A, de Abreu C S, Amaral V S, Sousa J B, Melville R J and Palmer S B 1995 The magnetic properties of a $Gd_{72}Sc_{28}$ single crystal *J. Phys.: Condens. Matter* **7** 9853
- [7] Salgueiro da Silva M, Moreira J M, Pereira de Azevedo M M, Mendes J A, de Abreu C S, Sousa J B, Melville R J and Palmer S B 1999 Helimagnetism and field-induced phases in random $Gd_{64}Sc_{36}$ single crystals *J. Phys.: Condens. Matter* **11** 7115–24
- [8] Lüthi B 2005 *Physical Acoustics in the Solid Phase* (Berlin: Springer)
- [9] Kinsler L E and Frey A R 1962 *Physical Acoustics in the Solid Phase* (New York: Wiley)
- [10] Thompson R B 1978 A model for the electromagnetic generation of ultrasonic guided waves in ferromagnetic metal polycrystals *IEEE Trans. Sonics Ultrason.* **25** 7–15
- [11] Frost H M 1979 *Electromagnetic-ultrasonic Transducer: Principles, Practice and Applications in Physical Acoustics* vol 14 ed W P Mason and R N Thurston (New York: Academic) pp 179–275
- [12] Thompson R B 1990 *Physical Principles of Measurements with EMAT Transducers in Physical Acoustics* vol 19 ed R N Thurston and A D Pierce (New York: Academic) pp 157–200
- [13] Roland Dobbs E, Thomas R L and Hsu D 1969 Resonant effects in directly generated acoustic waves *Phys. Lett. A* **30** 338–9
- [14] Lim C M, Dixon S, Edwards C and Palmer S B 1998 The detection of magnetic phase transitions in single crystals of erbium and erbium–thulium by electromagnetic acoustic transducers *J. Phys. D: Appl. Phys.* **31** 1362
- [15] Edwards R S, Perry R, Backhouse D J, Moore I J, Cleanthous D, Clough A R and Stone D 2011 Non-contact ultrasonic measurements of the elastic constants of magnetic materials *J. Phys.: Conf. Ser.* **286** 012050
- [16] Palmer S B and Dixon S 2003 Industrially viable non-contact ultrasound *Insight* **45** 211–7
- [17] Buchel'nikov V D and Vasiliev A N 1992 Electromagnetic generation of ultrasound in ferromagnetics *Usp. Fizicheskikh Nauk (in Russian)* **162** 89–128
- [18] Buchel'nikov V D, Bychkov I V and Sharov V G 1994 Electromagnetic generation of ultrasound in crystals with helical magnetic structure *JETP* **78** 396–400
- [19] Buchel'nikov V D, Bychkov I V, Nikishin Ju A, Palmer S B, Lim C M and Edwards C 2002 Electromagnetic-acoustic transformation in an erbium single crystal *Solid State Phys. (Fizika Tverdogo Tela)* **44** 2022–8
- [20] Dobbs E R 1973 *Electromagnetic Generation of Ultrasonic Waves in Physical Acoustics* vol 10 (New York: Academic) pp 127–89
- [21] Jian X, Dixon S and Edwards R S 2004 Modelling ultrasonic generation for lorentz force EMATs *Insight* **46** 671–3
- [22] Parkinson G J and Wilson D W 1977 Non-contact ultrasonics *Br. J. Non-Destr. Test.* **7** 178–84
- [23] Andrianov A B, Buchel'nikov V D, Vasil'ev A N, Gaidukov Ju P, Il'yasov R S and Shavrov V G 1988 Electromagnetic excitation of ultrasound in gadolinium *JETP* **94** 277
- [24] Pantea C, Rickel D G, Migliori A, Leisure R G, Zhang J, Zhao Y, El-Khatib S and Li B 2005 Digital ultrasonic pulse-echo overlap system and algorithm for unambiguous determination of pulse transit time *Rev. Sci. Instrum.* **76** 114902
- [25] Chen D-X, Pardo E and Sanchez A 2005 Demagnetizing factors for rectangular prisms *IEEE Trans. Magn.* **41** 2077–88