

**I.O.S.**

**ESTIMATION OF WAVE SPECTRA FROM  
WAVE HEIGHT AND PERIOD**

by  
**D.J.T. CARTER**

**I.O.S. Report No. 135  
1982**

**NATURAL ENVIRONMENT  
INSTITUTE OF OCEANOGRAPHIC  
SCIENCES  
RESEARCH COUNCIL**

**INSTITUTE OF OCEANOGRAPHIC SCIENCES**

Wormley, Godalming,  
Surrey, GU8 5UB.  
(0428 - 79 - 4141)

(Director: Dr. A.S. Laughton FRS)

Bidston Observatory,  
Birkenhead,  
Merseyside, L43 7RA.  
(051 - 653 - 8633)

(Assistant Director: Dr. D.E. Cartwright)

Crossway,  
Taunton,  
Somerset, TA1 2DW.  
(0823 - 86211)

(Assistant Director: M.J. Tucker)

---

*On citing this report in a bibliography the reference should be followed by the words UNPUBLISHED MANUSCRIPT.*

INSTITUTE OF OCEANOGRAPHIC SCIENCES

WORMLEY

Estimation of wave spectra from  
wave height and period

by

D.J.T. Carter

I.O.S. Report No.135

1982

*Marine Information and Advisory Service  
Reference Publication No.4*



## C O N T E N T S

Summary	1
Notation	2
Introduction	3
Theory	4
The Bretschneider Spectrum	6
The Pierson and Moskowitz Spectrum	7
The JONSWAP Spectrum	9
Numerical Integrations of $I_n$	13
Examples of wave spectra	14
Concluding Remarks	17
References	18
Equations	Foldout



#### SUMMARY

Formulae are derived for estimating single-peaked sea surface wave spectra as a function of frequency from values of significant wave height and wave period. The formulae are based upon a general spectral formula suggested by Bretschneider - recommended by the International Ship Structures Congress' committee on environmental conditions - and include the Pierson-Moskowitz and JONSWAP spectra.

D.J.T. Carter is a member of the IOS Marine Physics Group which undertakes research into various aspects of ocean waves.

## NOTATION

A } B }	Parameters of Bretschneider spectrum
D	limiting water depth
E(f)	one dimensional frequency spectrum of sea surface variance
f	frequency (Hz)
f <sub>m</sub>	frequency of spectral peak (corresponding to maximum E(f))
F	f/f <sub>m</sub>
g	acceleration due to gravity
H <sub>s</sub>	significant wave height
m <sub>n</sub>	nth moment of spectrum E(f)
q	function of f incorporated in the JONSWAP peak enhancement function
T <sub>1</sub>	mean wave period
T <sub>m</sub>	peak wave period
T <sub>s</sub>	significant wave period
T <sub>v</sub>	visual estimate of wave period
T <sub>z</sub>	zero-up-crossing wave period
t	arbitrary dummy variable
u	wind speed at 10 m above surface
U	numerical value of wind speed at 10 m above surface in m s <sup>-1</sup>
u <sub>19.5</sub>	numerical value of wind speed at 19.5 m above surface in m s <sup>-1</sup>
x	wind fetch
z	arbitrary dummy variable
α	spectral parameter
γ	JONSWAP spectral peak enhancement parameter
γ <sup>q</sup>	JONSWAP spectral peak enhancement function
σ	JONSWAP spectral parameter
Γ	Gamma function
λ <sub>m</sub>	wavelength of peak frequency



## INTRODUCTION

Estimates of sea conditions are required by engineers designing offshore structures. Commonly these conditions are described by the significant wave height and a wave period, such as the zero-up-crossing period. The values of these parameters can be obtained from wave measurements or from visual estimates of wave height and period, or from a knowledge of the wind field, using for example the wave prediction curves of Darbyshire and Draper (1963).

Sometimes a more detailed description of the sea surface is required; the engineer may need to evaluate the stress upon his structure from all the wave energy components that would be present across the frequency spectrum, from low-frequency swell to high frequency sea waves with periods of a few seconds.

Spectra showing sea surface variance, proportional to wave energy, as a function of frequency can be derived from wave measurements. If these are not available, then spectra can be estimated from significant wave height and wave period. This report gives various formulae that can be used for deep water waves, based upon the following form of the spectrum,  $E$ , as a function of frequency,  $f$ (Hz), proposed by Bretschneider (1959)

$$E(f) = A f^{-5} \exp \left[ - B f^{-4} \right] \quad (1)$$

Three cases are considered:

- the Bretschneider spectrum, which is similar to that proposed by the ITTC (1972) and that recommended by the ISSC (1976) for open ocean conditions,
- the Pierson-Moskowitz spectrum for a fully-developed sea in which the parameter  $A$  in equation (1) is fixed,
- the JONSWAP spectrum derived by Hasselmann et al. (1973), obtained by multiplying the Bretschneider formula by a peak enhancement function, and suggested by ISSC (1976) for use in conditions of limited fetch.

All these spectra are single peaked. In practice, wave spectra sometimes have two peaks or more, although Houmb and Due (1978) found that only about 4% of spectra from Waverider buoy measurements off northern Norway (near 71°N 18°E) were multi-peaked. A method of modelling double-peaked spectra is given by Ochi and Hubble (1977).

## THEORY

Significant wave height

Given a spectrum of sea surface elevation  $E(f)$  where  $f$  is frequency (Hz), and defining the  $n$ th moment by

$$m_n = \int_0^{\infty} f^n E(f) df \quad (2)$$

then significant wave height is defined by

$$H_s = 4 m_0^{1/2} \quad (3)$$

Originally, significant wave height was defined (by Sverdrup and Munk, 1947) as the mean height of the highest one-third waves because this value seemed to be close to visual estimates of wave height. The two definitions are almost identical for narrow-band waves (see Longuet-Higgins, 1952) and in general appear to be in reasonable agreement.

Wave period

Mean wave period  $T_1$  is given by

$$T_1 = m_0/m_1 \quad (4)$$

zero-up-crossing wave period  $T_z$  by

$$T_z = (m_0/m_2)^{1/2} \quad (5)$$

and the frequency with maximum spectral energy (peak frequency),  $f_m$  gives a peak period defined by

$$T_m = 1/f_m \quad (6)$$

Visual estimates of wave period  $T_v$  have been compared with  $T_z$  by Cartwright (1964), but showed poor correlation and he suggested that  $T_v$  might be a better estimate of the mean wave period  $T_1$ , rather than the zero-up-crossing period  $T_z$ . ISSC (1967) supported this suggestion and recommended equating  $T_v$  and  $T_1$  but subsequently ISSC (1979) have suggested a better relationship to be

$$T_v = T_m/1.05$$

Derivation

For the spectrum  $E(f)$  given by equation (1)

$$m_n = \int_0^{\infty} A f^{n-5} \exp[-B f^{-4}] df$$

Substituting  $t = B f^{-4}$

$$m_n = \frac{A}{4B(1-n/4)} \int_0^{\infty} t^{-n/4} e^{-t} dt$$

and using the gamma function  $\Gamma(1-n/4) = \int_0^{\infty} t^{-n/4} e^{-t} dt$

$$m_n = \frac{A}{4B(1-n/4)} \Gamma(1-n/4) \quad \text{for } n < 4$$

Therefore

$$\left. \begin{aligned} m_0 &= A/4B \\ m_1 &\approx 1.2254A/4B^{3/4} \\ m_2 &\approx 1.77245A/4B^{1/2} \end{aligned} \right\} \quad (7)$$

and

$$\left. \begin{aligned} T_1 &\approx 0.8161B^{-1/4} \\ T_Z &\approx 0.7511B^{-1/4} \end{aligned} \right\} \quad (8)$$

The peak frequency is given from equation (1) by

$$f_m^4 = 4B/5 = 0.8B \quad (9)$$

and

$$T_m \approx 1.0574B^{-1/4} \quad (10)$$

The ratios of the different periods from equations (8) and (10) are given in Table (1).

Ratio of various wave periods for the Bretschneider spectrum (equation 1)	
$T_1/T_Z$	1.0864
$T_1/T_m$	0.7718
$T_Z/T_m$	0.7104

## BRETSCHNEIDER SPECTRUM

The Bretschneider spectrum given by equation (1) has two variables A and B, which can be specified by wave height and period. Variable B is given by the period, from equation (8) or (10), and A is then determined from the significant wave height using equations (3) and (7)

(in units of  $m^2 \text{ Hz}^{-1}$  if  $H_S$  is in metres)

$$\left. \begin{aligned} E(f) &= 0.11H_S^2 T_1(T_1 f)^{-5} \exp\left[-0.443/(T_1 f)^4\right] \\ &= 0.080H_S^2 T_Z(T_Z f)^{-5} \exp\left[-0.318/(T_Z f)^4\right] \\ &= 0.31H_S^2 T_m(T_m f)^{-5} \exp\left[-1.25/(T_m f)^4\right] \end{aligned} \right\} \quad (11)$$

Bretschneider (1977) defines significant wave period  $T_S$  by

$$T_S = (0.8)^{1/4} / f_m$$

$$\text{i.e. } T_S = B^{-1/4}$$

$$\text{and so } T_S \approx 0.946T_m \approx 1.23T_1 \approx 1.33T_Z$$

Substituting for variable B in terms of  $T_S$  leads to the spectrum (in units of  $m^2 \text{ Hz}^{-1}$ )

$$E(f) = 0.25H_S^2 T_S(T_S f)^{-5} \exp\left[-1/(T_S f)^4\right] \quad (12)$$

Bretschneider (1977, fig. 1) gives a diagram as well as equations for estimating  $H_S$  and  $T_S$ , but he states that judging from North Atlantic wave spectra, the estimate of  $T_S$  from this diagram is about 10% too high for high wind speeds. He then recommends the following formula for  $T_S$

$$T_S = 0.73U \tanh\{0.5 \ln[(1+z)/(1-z)]\}^{0.6}$$

where

$$z = 35H_S/U^2$$

$H_S$  = significant wave height (m)

$U$  = 10 minute mean wind speed at 10 m ( $m \text{ s}^{-1}$ )

## PIERSON-MOSKOWITZ SPECTRUM

This spectrum was derived by Pierson and Moskowitz (1964) using Shipborne Wave Recorder traces obtained at the North East Atlantic Ocean Weather Stations when the sea was considered to be fully arisen.

It is given by:

$$E(f) = \alpha g^2 (2\pi)^{-4} f^{-5} \exp \left[ - 1.25 (f/f_m)^{-4} \right] \quad (13)$$

where  $\alpha = 0.0081$

and the peak frequency  $f_m$  is given by  $f_m = 0.8772(g/2\pi u_{19.5})$

with  $u_{19.5}$  = wind speed at 19.5 m above sea surface.

Thus this spectrum is of the form of the spectrum given in equation (1)

with  $A = \alpha g^2 (2\pi)^{-4}$

and  $B = 1.25 f_m^4 = 0.7401 (g/2\pi u_{19.5})^4$

Values of significant wave height,  $H_S$  (m), derived from equations (3) and (7) with  $g = 9.81 \text{ m s}^{-2}$ , and of wave periods (s) from equations (8) and (10) are given in Table 2.

Table 2

Values of significant wave height  $H_S$  (m) and various wave periods (s) for the Pierson-Moskowitz spectrum in terms of wind speed at 19.5 m above sea level  $(u_{19.5}) \text{ m s}^{-1}$ ; also wave periods in terms of  $H_S$  (m)

$$H_S = 0.0213 u_{19.5}^2$$

$$T_1 = 0.5635 u_{19.5} = 3.86 H_S^{1/2}$$

$$T_Z = 0.5187 u_{19.5} = 3.55 H_S^{1/2}$$

$$T_m = 0.7302 u_{19.5} = 5.00 H_S^{1/2}$$

Since the Pierson-Moskowitz spectrum has only one variable (B), it can be specified either by wave height or by wave period (in units of  $\text{m}^2 \text{Hz}^{-1}$ )

(a) given significant wave height  $H_S$  (m)

$$E(f) = 5.00 \cdot 10^{-4} f^{-5} \exp \left[ - 2.00 \cdot 10^{-3} / H_S^2 f^4 \right] \quad (14)$$

(b) given wave period (s)

$$\left. \begin{aligned} E(f) &= 5.00 \cdot 10^{-4} f^{-5} \exp \left[ - 0.443 / (T_1 f)^4 \right] \\ &= 5.00 \cdot 10^{-4} f^{-5} \exp \left[ - 0.318 / (T_Z f)^4 \right] \\ &= 5.00 \cdot 10^{-4} f^{-5} \exp \left[ - 1.25 / (T_m f)^4 \right] \end{aligned} \right\} \quad (15)$$

## JONSWAP SPECTRUM

This spectrum was determined by Hasselmann et al. (1973) from observations in the North Sea of fetch-limited waves, that is for a growing sea state in the absence of swell. It is given by

$$E(f) = \alpha g^2 (2\pi)^{-4} f^{-5} \exp \left[ - 1.25 (f/f_m)^{-4} \right] \gamma^q \quad (16)$$

$$\text{where } \alpha = 0.076 (gx/u^2)^{-0.22}$$

with  $u$  = wind speed at 10 m above sea surface

$x$  = fetch

$$q = \exp \left[ - (f-f_m)^2 / 2\sigma^2 f_m^2 \right]$$

$$\text{with } \sigma = \begin{cases} 0.07 & f \leq f_m \\ 0.09 & f > f_m \end{cases}$$

and  $\gamma = 3.3$ .

The value for the peak enhancement parameter ( $\gamma$ ) of 3.3 is an average figure derived by Hasselmann et al. (1973). They found individual values within the range of 1-6. Detailed analysis of these  $\gamma$  values by Ochi (1979) showed that they have a normal distribution with a mean of 3.3 and a standard deviation of 0.79, i.e. 95% between 1.75 and 4.85.

So the JONSWAP spectrum is of the general form of the Bretschneider spectrum given by equation (1), multiplied by a peak enhancement function  $\gamma^q$

$$E(f) = Af^{-5} \exp \left[ - Bf^{-4} \right] \gamma^q \quad (17)$$

and since  $\gamma^q$  has its only maximum at  $f = f_m$ , the maximum of  $E(f)$  is given from equation (9) i.e.

$$f_m^4 = 4B/5$$

The moments of this spectrum cannot be determined analytically but may be estimated by numerical integration of the following expression

$$I_n = \int_0^{\infty} F^n F^{-5} \exp \left[ - 1.25 (F)^{-4} \right] \gamma^q dF \quad (18)$$

$$\text{where } q = \exp \left[ - (F-1)^2 / 2\sigma^2 \right]$$

$$\text{with } \sigma = \begin{cases} 0.07 & F \leq 1 \\ 0.09 & F > 1 \end{cases}$$

Table 3 provides results of numerical integration of  $I_n$  for a range of values of  $\gamma$  (page 13).

Therefore, for the JONSWAP spectrum, letting  $f = F f_m$ ,

$$m_n = \alpha g^2 (2\pi^{-4}) f_m^{n-4} I_n(\gamma) \quad (19)$$

and from equation (3)

$$m_0 = \frac{H_S^2}{16} = \alpha g^2 (2\pi)^{-4} f_m^{-4} I_0(\gamma) \quad (20)$$

The JONSWAP spectrum can, therefore, be specified as follows

By substituting equation (20) in equation (16) with  $f_m = 1/T_m$

$$E(f) = \frac{1}{16 I_0(\gamma)} H_S^2 T_m (T_m f)^{-5} \exp \left[ - 1.25 / (T_m f)^4 \right] \gamma^q \quad (21)$$

$$\text{where } q = \exp \left[ - (T_m f - 1)^2 / 2\sigma^2 \right]$$

$$\text{with } \sigma = \begin{cases} 0.07 & T_m f \leq 1 \\ 0.09 & T_m f > 1 \end{cases}$$

(a) In terms of  $T_m$

e.g. if  $\gamma = 3.3$

$$E(f) = 0.205 H_S^2 T_m (T_m f)^{-5} \exp \left[ - 1.25 / (T_m f)^4 \right] 3.3^q \quad (22)$$



(b) In terms of  $T_1$ 

From equations (4) and (19)

$$T_1 = T_m I_0/I_1 \quad (23)$$

Substituting for  $T_m$  in equation (21) gives the required result

e.g. if  $\gamma = 3.3$

$$T_1 = 0.8345T_m$$

$$\text{and } E(f) = 0.0994H_S^2 T_1 (T_1 f)^{-5} \exp \left[ -0.6062/(T_1 f)^4 \right] 3.3^q \quad (24)$$

$$\text{where } q = \exp \left[ - (1.20T_1 f - 1)^2 / 2\sigma^2 \right]$$

$$\text{with } \sigma = \begin{cases} 0.07 & 1.20 T_1 f \leq 1 \\ 0.09 & 1.20 T_1 f > 1 \end{cases}$$

(c) In terms of  $T_z$ 

From equations (5) and (19)

$$T_z = T_m (I_0/I_2)^{\frac{1}{2}} \quad (25)$$

Substituting for  $T_m$  in equation (21) gives the required result

e.g. if  $\gamma = 3.3$

$$T_z = 0.7775T_m$$

$$\text{and } E(f) = 0.0749H_S^2 T_z (T_z f)^{-5} \exp \left[ -0.4567/(T_z f)^4 \right] 3.3^q \quad (26)$$

$$\text{where } q = \exp \left[ - (1.286T_z f - 1)^2 / 2\sigma^2 \right]$$

$$\text{with } \sigma = \begin{cases} 0.07 & 1.286T_z f \leq 1 \\ 0.09 & 1.286T_z f > 1 \end{cases}$$

JONSWAP spectra for other values of  $\gamma$  may be similarly derived using the values in Table 3.

Limiting water depth

The JONSWAP measurements from which the spectrum was derived were with off-shore winds. Hasselmann et al. (1973) found that the waves were unaffected by the water depth and did not 'feel' the bottom. The criterion used by them was that water depth was greater than a quarter of the wave length  $\lambda_m$  associated with the peak frequency, i.e. the limiting water depth D was given by

$$D = \lambda_m/4 = g/8\pi f_m^2$$

therefore if D is in metres and period is in seconds

$$D = 0.390T_m^2$$

and for  $\gamma = 3.3$

$$\begin{aligned} D &= 0.561T_1^2 \\ &= 0.646T_z^2 \end{aligned}$$

If the water depth is less than D then the wave would be affected by the sea floor and the JONSWAP spectrum would be inappropriate.

TABLE 3

Values of  $I_n(\gamma)$  defined by equation 18

$\gamma$	$I_{-1}$	$I_0$	$I_1$	$I_2$	$I_0/I_1$	$(I_0/I_2)^{1/2}$
1.0	0.171	0.200	0.259	0.396	0.772	0.711
1.2	0.182	0.211	0.270	0.407	0.780	0.719
1.4	0.192	0.221	0.280	0.417	0.788	0.727
1.6	0.202	0.230	0.290	0.427	0.795	0.734
1.8	0.211	0.240	0.300	0.437	0.801	0.741
2.0	0.220	0.249	0.309	0.447	0.807	0.747
2.2	0.229	0.258	0.318	0.456	0.812	0.753
2.4	0.238	0.267	0.327	0.465	0.817	0.758
2.6	0.247	0.276	0.336	0.474	0.821	0.763
2.8	0.255	0.284	0.344	0.483	0.826	0.768
3.0	0.264	0.293	0.353	0.491	0.830	0.772
3.2	0.272	0.301	0.361	0.500	0.834	0.776
3.3	0.2755	0.3050	0.3655	0.5046	0.8345	0.7775
3.4	0.280	0.309	0.370	0.508	0.837	0.780
3.6	0.288	0.318	0.378	0.517	0.840	0.784
3.8	0.296	0.326	0.386	0.525	0.844	0.788
4.0	0.304	0.334	0.394	0.533	0.847	0.791
4.2	0.312	0.341	0.402	0.541	0.850	0.794
4.4	0.319	0.349	0.410	0.549	0.852	0.797
4.6	0.327	0.357	0.418	0.557	0.855	0.801
4.8	0.335	0.365	0.425	0.565	0.858	0.803
5.0	0.342	0.372	0.433	0.573	0.860	0.806
5.2	0.350	0.380	0.441	0.580	0.862	0.809
5.4	0.357	0.387	0.448	0.588	0.865	0.812
5.6	0.365	0.395	0.456	0.596	0.867	0.814
5.8	0.372	0.402	0.463	0.603	0.869	0.817
6.0	0.380	0.410	0.471	0.611	0.871	0.819
6.2	0.387	0.417	0.478	0.618	0.873	0.821
6.4	0.394	0.424	0.485	0.626	0.874	0.824
6.6	0.401	0.432	0.493	0.633	0.876	0.826
6.8	0.408	0.439	0.500	0.641	0.878	0.828
7.0	0.416	0.446	0.507	0.648	0.880	0.830

## EXAMPLES

Figures 1 to 4 illustrate examples of wave spectra described in this report.

Figure 1 shows

- . the JONSWAP spectrum (with  $\gamma = 3.3$ ) and the Bretschneider spectrum for significant wave height of 3.0 m and peak frequency of  $1/7.0$  s (i.e.  $T_m = 7.0$  s), taken from equations (22) and (11) respectively.
- . the Pierson-Moskowitz spectrum with the same peak frequency and significant wave height of 1.96 m (from Table 2).
- . the Pierson-Moskowitz spectrum for a significant wave height of 3.0 m.

For the Bretschneider spectrum, the value of  $T_z$  is 5.0 s, for the Pierson-Moskowitz spectra it is 5.0 s and 6.1 s respectively (from Table 1) whilst for the JONSWAP spectrum it is 5.4 s (from equation (25)).

Figure 2 shows

- . the JONSWAP spectrum ( $\gamma = 3.3$ ) with significant wave height of 3 m and  $T_z$  of 4.5 s, 5 s and 6 s.

Using the value for  $\alpha$  in terms of wind speed,  $u$ , and fetch,  $x$  (from equation (16)), and the following equation for  $f_m$  (from Hasselmann et al., 1973)

$$f_m = 3.5 (g^2/xu)^{1/3}$$

it may be shown that the spectrum with  $T_z = 4.5$  s would arise from a strong wind over a short fetch (about  $40 \text{ m s}^{-1}$  over 20 km) and the  $T_z = 6$  s spectrum from a lower wind over a long fetch (about  $10 \text{ m s}^{-1}$  over 200 km).

Figure 3 illustrates

- . how the shape of the JONSWAP spectrum with significant wave height of 7 m varies with  $\gamma$  if the peak frequency is held constant.

Figure 4 illustrates

- . how the shape of the JONSWAP spectrum with significant wave height of 7 m varies with  $\gamma$  if the zero-up-crossing period is held constant ( $\gamma = 1$  corresponds to the Bretschneider spectrum).

Figure 1

$H_s = 3.0\text{m}$   $T_m = 7.0\text{s}$

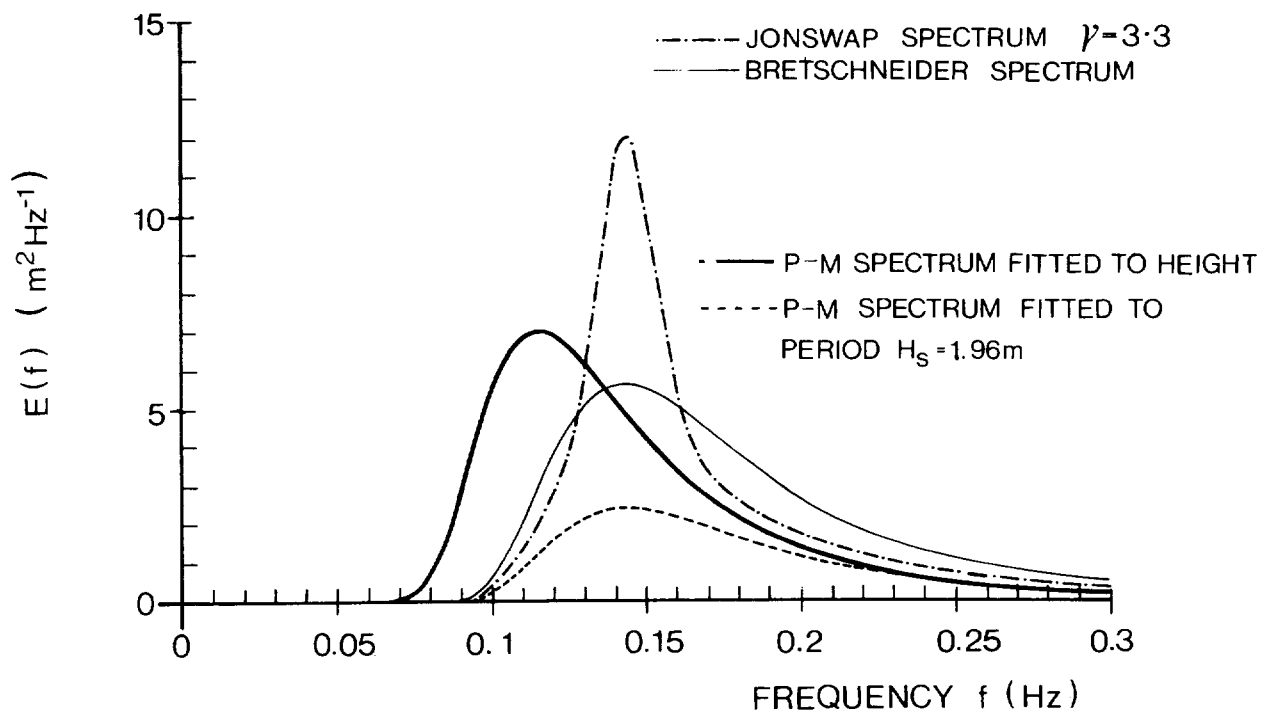


Figure 2

JONSWAP SPECTRUM  $H_s=3.0\text{m}$   $\gamma=3.3$

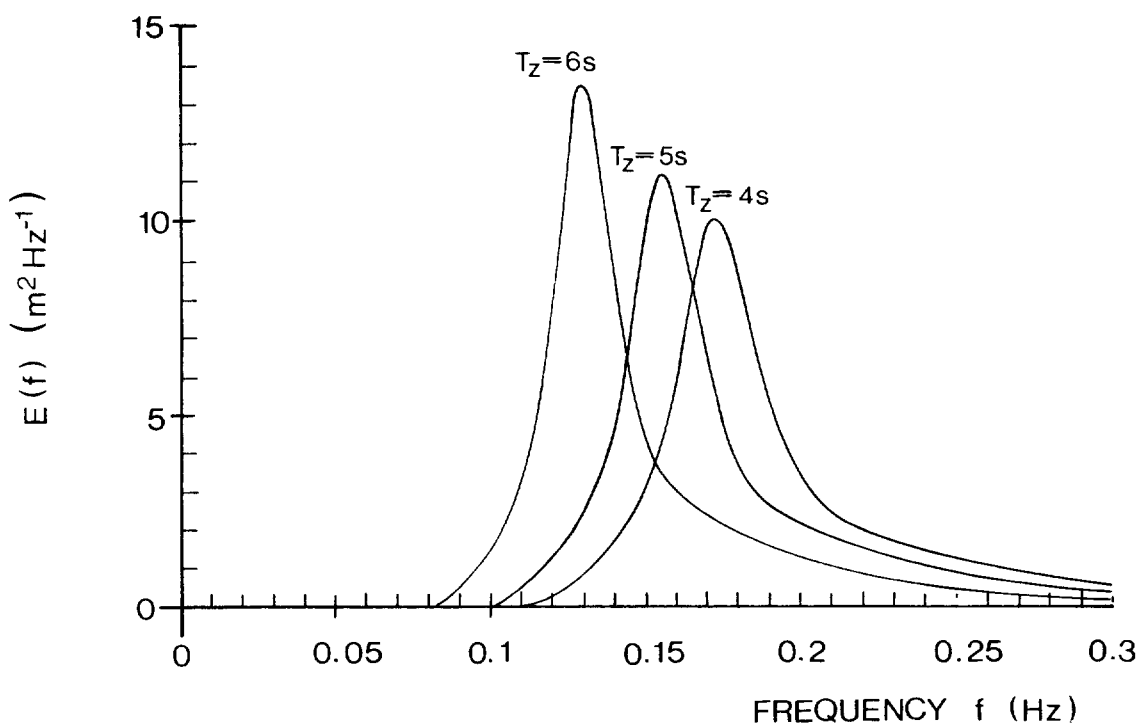


Figure 3

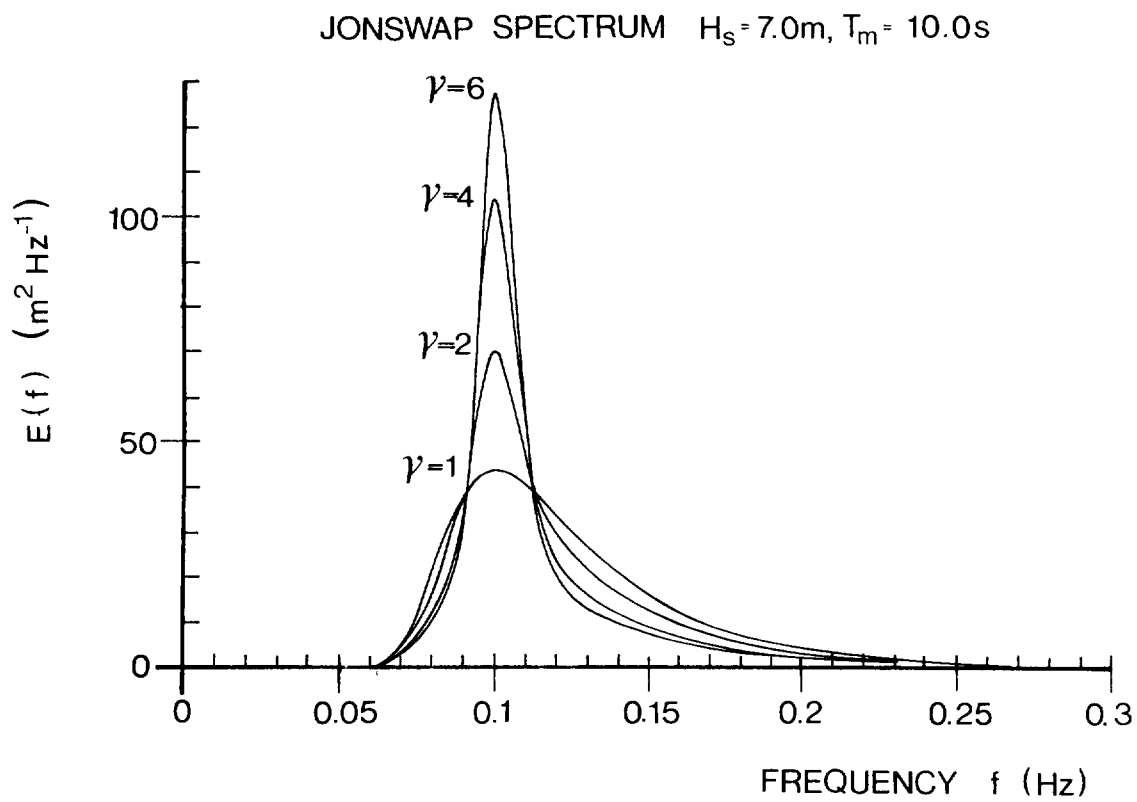
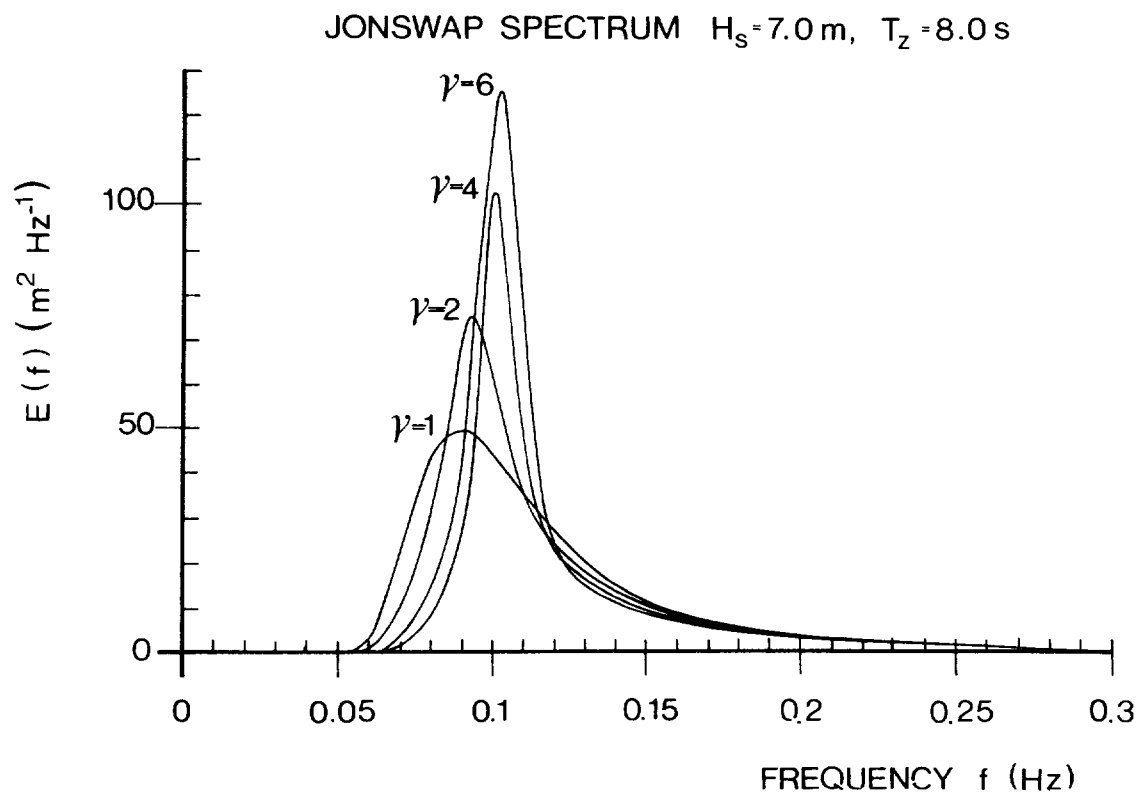


Figure 4



## CONCLUDING REMARKS

Although the recommendations of the ITTC (1972) and the ISSC (1976, 1979) have been given, no attempt has been made to establish which spectrum should be used. However, the Pierson-Moskowitz spectrum represents a fully developed sea, so is generally not appropriate for very high sea states such as that associated with the 50-year storm; the Bretschneider spectrum is more appropriate for these conditions in the open ocean.

The JONSWAP spectrum was derived from measurements of fetch-limited and growing sea states in the absence of swell; the choice of value for the parameter  $\gamma$  is a problem: Hasselmann et al. (1973) show that the wide range of values they found for  $\gamma$  cannot be explained in terms of fetch and mean wind speed, and suggest that it might be associated with small scale inhomogeneities in the wind field. So it would seem reasonable to use the mean value of 3.3 for  $\gamma$  or, if significant to the engineering criteria, a range of values based upon the normal distribution fitted by Ochi (1979).

Ewing (1980) examines whether the JONSWAP spectrum can be used to describe the wave spectra obtained from measurements in the open ocean about 20 km west of South Uist in the Outer Hebrides. He finds that with easterly winds the spectrum is double-peaked and is well-fitted by the JONSWAP formula (with a range of  $\gamma$  from 1 to 7) plus a swell component; with westerly winds it is difficult to separate the local sea and the swell components but the sea component seems to have values of wave height and period consistent with the Pierson-Moskowitz spectrum.

## ACKNOWLEDGEMENTS

This work was supported financially by the Department of Energy and Industry. I am grateful to a colleague, P.G. Challenor, for carrying out the numerical integrations to obtain Table 3.

REFERENCES

1. Bretschneider, C.L. 1959.  
Wave variability and wave spectra for wind-generated gravity waves.  
U.S. Army, Corps of Engineers, Beach Erosion Board, Technical Memo  
No. 118.
2. Bretschneider, C.L. 1970.  
Forecasting relations for wave generation.  
Look Lab/Hawaii 1(3), 31-34.  
James K.K. Look Laboratory of Oceanographic Engineering, University  
of Hawaii.
3. Bretschneider, C.L. 1977.  
On the determination of the design ocean wave spectrum.  
Look Lab/Hawaii 7(1), 1-23.  
James K.K. Look Laboratory of Oceanographic Engineering, University  
of Hawaii.
4. Cartwright, D.E. 1964.  
A comparison of instrumental and visually estimated wave heights and  
periods recorded on Ocean Weather Ships.  
Appendix to 'The presentation of wave data from voluntary observing  
ships', Hogben, N. and Lumb, F.E.  
National Physical Laboratory, Ship Report No. 49, 9-11.
5. Darbyshire, M. and Draper, L. 1963.  
Forecasting wind-generated sea waves.  
Engineering 195, 482-484.
6. Ewing, J.A. 1980.  
Observation of wind-waves and swell at an exposed coastal location.  
Estuarine and Coastal Marine Science 10(5), 543-554.
7. Hasselmann, K. et al. 1973.  
Measurements of wind-wave growth and swell decay during the Joint  
North Sea Wave Project (JONSWAP).  
Deutschen Hydrographischen Zeitschrift, A8, 12, 95 pp.  
Deutsches Hydrographisches Institut, Hamburg.
8. Houmb, O.G. and Due, E. 1978.  
On the occurrence of wave spectra with more than one peak.  
University of Trondheim, Norwegian Institute of Technology, Division  
of Port and Ocean Engineering, Report (under contract) Nr B1830-5252,  
23 pp.
9. ISSC 1967.  
Report of Committee 1, 'Environmental Conditions'.  
Proceedings of the 3rd International Ship Structures Congress, Oslo,  
Norway, 1967.
10. ISSC 1976.  
Report of Committee I.1, 'Environmental Conditions'.  
Proceedings of the 6th International Ship Structures Congress, Boston,  
U.S.A., 1976.



11. ISSC 1979.  
Report of Committee I.1, 'Environmental Conditions'.  
Proceedings of the 7th International Ship Structures Congress, Paris,  
France, 1979.
12. ITTC 1972.  
Report of the Seakeeping Committee.  
Proceedings of the 13th International Towing Tank Conference,  
Berlin/Hamburg, Germany, 1972, pp. 813-817.
13. Longuet-Higgins, M.S. 1952.  
On the statistical distribution of the heights of sea waves.  
J. Marine Research 11(3), 245-266.
14. Ochi, M.K. 1979.  
A series of JONSWAP wave spectra for offshore structure design.  
Proceedings of the 2nd International Conference on the Behaviour of  
Offshore Structures (BOSS '79), London, U.K. Vol. 1, 75-86.  
BHRA Fluid Engineering, Cranfield, Bedford, U.K.
15. Ochi, M.K. and Hubble, E.N. 1977.  
Six-parameter wave spectra.  
Proceedings of the 15th Coastal Engineering Conference, Honolulu,  
Hawaii, 1976. Vol. 1, 301-32  
American Society Civil Engineers, New York.
16. Pierson, W.J. and Moskowitz, L. 1964.  
A proposed spectral form for fully developed wind seas based on the  
similarity theory of S.A. Kitaigorodskii.  
J. Geophysical Research 69(24), 5181-5190.
17. Sverdrup, H.U. and Munk, W.H. 1947.  
Wind, sea and swell: theory of relations for forecasting.  
U.S. Hydrographic Office, H.O. Pub. No. 601, 44 pp.

All references are available from the British Library, Boston Spa.

## EQUATIONS

### General relationships of wave height and periods

$$m_n = \int_0^{\infty} f^n E(f) df \quad (2)$$

$$H_S = 4 m_0^{1/2} \quad (3)$$

$$T_1 = m_0/m_1 \quad (4)$$

$$T_Z = (m_0/m_2)^{1/2} \quad (5)$$

$$T_m = 1/f_m \quad (6)$$

$$m_0 = A/4B; m_1 \approx 1.2254A/4B^{3/4}; m_2 \approx 1.77245A/4B^{1/2} \quad (7)$$

$$T_1 \approx 0.8161B^{-1/4}; T_Z \approx 0.7511B^{-1/4} \quad (8)$$

$$f_m^4 = 4B/5 = 0.8B \quad (9)$$

$$T_m \approx 1.0574B^{-1/4} \quad (10)$$

### General spectral form (Bretschneider)

$$E(f) = A f^{-5} \exp[-B f^{-4}] \quad (1)$$

### Bretschneider spectrum in terms of $H_S$ and $T_1, T_Z, T_m$ or $T_S$

$$\left. \begin{aligned} E(f) &= 0.11H_S^2 T_1 (T_1 f)^{-5} \exp[-0.443/(T_1 f)^4] \\ &= 0.080H_S^2 T_Z (T_Z f)^{-5} \exp[-0.318/(T_Z f)^4] \\ &= 0.31H_S^2 T_m (T_m f)^{-5} \exp[-1.25/(T_m f)^4] \end{aligned} \right\} \quad (11)$$

$$E(f) = 0.25H_S^2 T_S (T_S f)^{-5} \exp[-1/(T_S f)^4] \quad (12)$$

### Pierson-Moskowitz spectrum general form

$$E(f) = \alpha g^2 (2\pi)^{-4} f^{-5} \exp[-1.25(f/f_m)^{-4}] \quad (13)$$

### Pierson-Moskowitz spectrum in terms of $H_S$ or $T_1, T_Z, T_m$

$$E(f) = 5.00 \cdot 10^{-4} f^{-5} \exp[-2.00 \cdot 10^{-3}/H_S^2 f^4] \quad (14)$$

$$\left. \begin{aligned} E(f) &= 5.00 \cdot 10^{-4} f^{-5} \exp[-0.443/(T_1 f)^4] \\ &= 5.00 \cdot 10^{-4} f^{-5} \exp[-0.318/(T_Z f)^4] \\ &= 5.00 \cdot 10^{-4} f^{-5} \exp[-1.25/(T_m f)^4] \end{aligned} \right\} \quad (15)$$

### JONSWAP spectrum general form

$$E(f) = \alpha g^2 (2\pi)^{-4} f^{-5} \exp[-1.25(f/f_m)^{-4}] \gamma^q \quad (16)$$

### JONSWAP spectrum in terms of $H_S$ and $T_m, T_1, T_Z$

$$E(f) = 0.205H_S^2 T_m (T_m f)^{-5} \exp[-1.25/(T_m f)^4] 3.3^q \quad (22)$$

$$E(f) = 0.0994H_S^2 T_1 (T_1 f)^{-5} \exp[-0.6062/(T_1 f)^4] 3.3^q \quad (24)$$

$$E(f) = 0.0749H_S^2 T_Z (T_Z f)^{-5} \exp[-0.4567/(T_Z f)^4] 3.3^q \quad (26)$$