

Original citation:

The Pelvic floor Society, National Institute for Health Research: Chronic Constipation Treatment Pathway (Including: Grossi, U., Knowles, C. H., Mason, James, Lacy-Colson, J. and Brown, S. R.). (2017) Surgery for constipation : systematic review and practice recommendations : Results II: Hitching procedures for the rectum (rectal suspension). *Colorectal Disease*, 19 (S3). pp. 37-48.

Permanent WRAP URL:

<http://wrap.warwick.ac.uk/92940>

Copyright and reuse:

The Warwick Research Archive Portal (WRAP) makes this work of researchers of the University of Warwick available open access under the following conditions.

This article is made available under the Creative Commons Attribution 4.0 International license (CC BY 4.0) and may be reused according to the conditions of the license. For more details see: <http://creativecommons.org/licenses/by/4.0/>

A note on versions:

The version presented in WRAP is the published version, or, version of record, and may be cited as it appears here.

For more information, please contact the WRAP Team at: wrap@warwick.ac.uk

Surgery for constipation: systematic review and practice recommendations

Results II: Hitching procedures for the rectum (rectal suspension)

U. Grossi*, C. H. Knowles*, J. Mason†, J. Lacy-Colson‡ and S. R. Brown§ on behalf of the NIHR CapaCiTY working group¶ and Pelvic floor Society**

*National Bowel Research Centre, Blizard Institute, Queen Mary University London, London, UK, †University of Warwick, Coventry, UK, ‡Royal Shrewsbury Hospital, Shrewsbury, UK, §Sheffield Teaching Hospitals, Sheffield, UK, ¶National Institute for Health Research: Chronic Constipation Treatment Pathway, London, UK, and **Affiliate section of the Association of Coloproctology of Great Britain and Ireland, London, UK

Abstract

Aim To assess the outcomes of rectal suspension procedures (forms of rectopexy) in adults with chronic constipation.

Method Standardised methods and reporting of benefits and harms were used for all CapaCiTY reviews that closely adhered to PRISMA 2016 guidance. Main conclusions were presented as summary evidence statements with a summative Oxford Centre for Evidence-Based Medicine (2009) level.

Results Eighteen articles were identified, providing data on outcomes in 1238 patients. All studies reported only on laparoscopic approaches. Length of procedures ranged between 1.5 to 3.5 h, and length of stay between 4 to 5 days. Data on harms were inconsistently reported and heterogeneous, making estimates of harm tentative and imprecise. Morbidity rates ranged between 5–15%, with mesh complications accounting for 0.5% of patients overall. No mortality was reported after any procedures in a total of 1044 patients. Although

inconsistently reported, good or satisfactory outcome occurred in 83% (74–91%) of patients; 86% (20–97%) of patients reported improvements in constipation after laparoscopic ventral mesh rectopexy (LVMR). About 2–7% of patients developed anatomical recurrence. Patient selection was inconsistently documented. As most common indication, high grade rectal intussusception was corrected in 80–100% of cases after robotic or LVMR. Healing of prolapse-associated solitary rectal ulcer syndrome occurred in around 80% of patients after LVMR.

Conclusion Evidence supporting rectal suspension procedures is currently derived from poor quality studies. Methodologically robust trials are needed to inform future clinical decision making.

Keywords Rectopexy, chronic constipation, laparoscopic ventral mesh rectopexy (LVMR), robotic ventral mesh rectopexy (RVMR), laparoscopic resection rectopexy (LRR), open rectopexy (OR)

Introduction

Background and procedural variations

Constipation, in a proportion of patients and in the broad sense of the term, is related to an inability to evacuate the rectum. This obstructed defaecation or rectal evacuation disorder is characterized by excessive straining, the feeling of incomplete evacuation, post-defaecatory seepage and often mucous discharge and pelvic pain [1]. In some of these patients there is clinical and proctographic evidence of a rectocele and/or intussusception. These anatomical

variants are considered to cause obstructed defaecation by a process of loss of force vector (ballooning of the rectum into a rectocele or invagination of the rectum into an intussusception rather than evacuation of stool on straining) or mucosal obstruction (in the case of an intussusception) [1]. It follows that clinical resolution of symptoms could be achieved by restoration of normal anatomy by surgery. Resuspension of the rectum aims to hitch the prolapsing or redundant rectal wall thus straightening the intussusception and/or effacing the rectocele. This concept while anatomically rational remains clinically controversial for a number of reasons. First, such anatomical variants are common and are often found in healthy individuals with no symptoms of obstructed defaecation [2]. Secondly, resuspension operations when employed to patients with full thickness rectal prolapse,

Correspondence to: Mr Steven Brown, Consultant Colorectal and General Surgeon, Department of Surgery, Northern General Hospital, Herries Road, Sheffield S5 7AU, UK.
E-mail: steven.brown@sth.nhs.uk

may themselves cause increasing constipatory symptoms [3]. Such procedures include posterior rectopexy [4]. The potential for worsening constipation is thought to relate to fibrosis caused by insertion of foreign material or mobilization of the lateral ligaments of the rectum. These ligaments contain nerves to the rectal wall and the resultant denervation may be the cause. In the process of developing alternative resuspending procedures, surgeons have attempted to limit the effect of the foreign material by using sutures only [5], added a resection of the sigmoid colon to the rectopexy [6–8] or more recently, limiting the dissection of the rectum to the ventral surface by supporting the rectum with mesh [9–23]. In addition, laparoscopy has become the favoured approach procedurally, not only allowing a more rapid recovery but also easing access to, and visibility in the pelvis.

Scope

The purpose of the overall CapaCiTY review process is to assess the efficacy and harms of surgical procedures for chronic constipation in adults. Thus, the aim of this review is to assess the outcomes of rectal suspension procedures in adults presenting with chronic constipation symptoms. In effect, this is however limited to patients with obstructed defaecation and internal prolapse (intussusception). Procedures considered beyond the scope of systematic review included rectal excisional procedures, e.g. STARR [9], rectal reinforcement procedures, e.g. transanal/transperineal repair of rectocele [10], and

uncommon variant of suspension procedures, e.g. laparoscopic promonto-fixation [11]. Studies where outcomes could not be segregated by eligible procedure were also excluded due to a mixed patient population with internal and external rectal prolapse [12–19], mixed indications including numerous pelvic floor abnormalities [20] or limited postoperative outcomes [21].

Previous reviews

Seven systematic [3, 22–27] and 4 narrative [28–31] reviews have focused on the outcome of rectal suspension. Of the systematic reviews, 3 [3,23,26] focused on full thickness external rectal prolapse, 2 included both full-thickness prolapse and constipation participants, and 2 [22,25] analysed outcomes of robotic surgery.

Summary of search results and study quality

The search yielded a total of 47 manuscripts for full text review (Fig. 1). From these, 18 articles published between 1995 and 2015 contributed to the systematic review, providing data on outcomes in a total of 1238 patients (range 20–233 patients per study) based on 18 defined patient cohorts (Table 1). Specific exclusions after full-text review (and after exclusion of non-English language publications) included 4 studies where the population sample was confirmed to be less than 20 patients [5,36–38], 4 studies of out-of-scope procedures [9–11,39], 2 studies where data were considered a duplicate

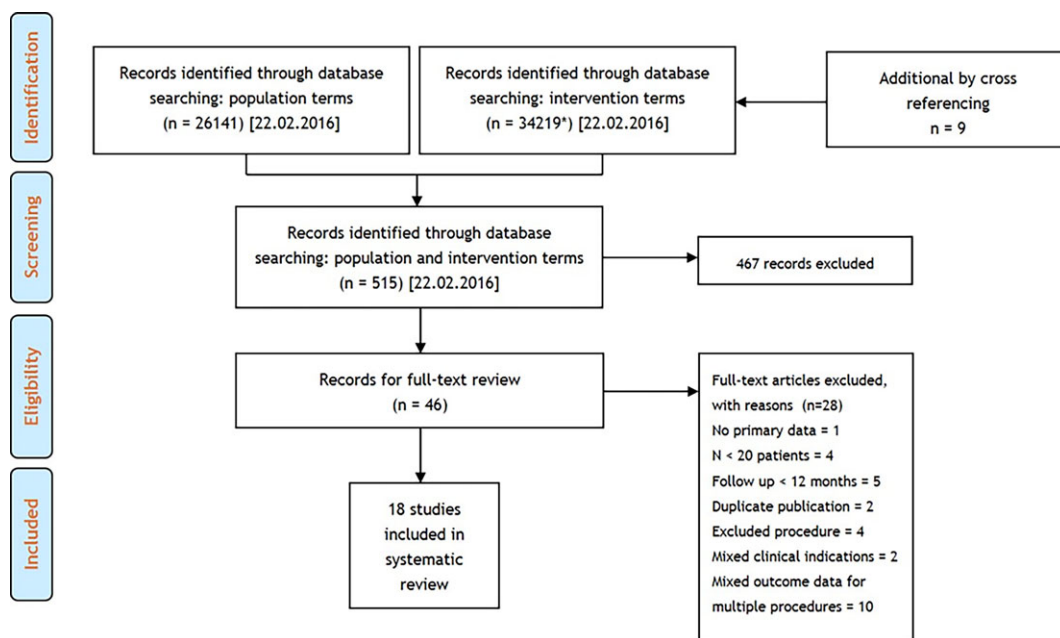


Figure 1 PRISMA diagram of search results.

Table 1 All studies included in systematic review.

Author	Year	Centre	Country	Total N	FU*	Design	Level [†]
van Tets[4]	1995	Groot	Netherlands	37	72	RCS	IV
Tsiaoussis [6]	2005	Heraklion	Greece	27	45	PCH	IV
Vermeulen [54]	2005	Rotterdam	Netherlands	20	18	RCS	IV
Von Papen [7]	2006	Herston	Australia	56	44	PCS	IV
Collinson [48]	2009	Oxford	UK	75	12	PCS	IV
Kargar [55]	2011	Shaid Sadoughi	Iran	39	32	RCS	IV
Portier [49]	2011	Toulouse	France	40	22	PCS	IV
Wong [45]	2011	Nantes	France	41	12	PCH	IIB
Wong [50]	2011	Nantes	France	84	29	PCH	IV
Sileri [51]	2012	Rome	Italy	34	12	PCS	IV
Wahed [52]	2012	Gateshead	UK	65	12	PCS	IV
Evans [34]	2013	Oxford	UK	30	36	PCS	IV
Formijne Jonkers [56]	2013	Amersfoort	Netherlands	233	30	RCS	IV
Gosselink [57]	2013	Oxford	UK	151	12	RCS	IV
Mantoo [46]	2013	Nantes	France	128	16	PCH	IIB
Boric [58]	2014	Montpellier	France	52	18	RCS	IV
Franceschilli [53]	2015	Rome	Italy	100	20	PCS	IV
Tsunoda [47]	2015	Kamogawa City	Japan	26	16	PCS	IV

PCH, prospective cohort study; RCS, retrospective case series; PCS, prospective case series study.

*Mean follow up in months.

†Oxford CEBM [34]. A median time follow up time was not provided.

[34,40], and 10 studies where outcomes could not be segregated by eligible procedure; [12–21] other exclusion criteria were: constipation not representing an indication ($n = 2$) [32,41], follow-up less than 12 months ($n = 5$) [8,33,35,42,43], and lack of primary patient data (one international survey on 391 surgeons) [44].

The general quality of studies was poor due to inadequate description of methods. The 18 included studies were all observational with no randomised controlled trials. These comprised two good quality prospective cohort studies [45,46] (level IIB), and 16 (level IV) studies comprising two poor quality case-control studies [34,47], eight prospective case series [6,7,48–53], and six retrospective case series [4,54–58]. Mean patient follow-up ranged from 12 to 72 months (median 25 months). Fifteen studies derived from European centres, with one each from Australia, Iran and Japan.

Perioperative data

Perioperative data were reported by all 18 studies (Table 2). Reporting of procedure duration was inconsistent but median procedural duration for laparoscopic ventral mesh rectopexy (LVMR) was 159 (range 75–198) min; for robotic ventral mesh rectopexy (RVMR), 205 (range 191–218) min; for laparoscopic resection rectopexy (LRR), 123 min (one study) [45,46]. Although robotic procedures appeared to take longer, substantial non-reporting of other procedures

precluded a clear finding. The two papers on RVMR were from the same centre. It is interesting to note a decrease in duration of operation, which may indicate a learning curve. Conversion to laparotomy was rare (median 2%, range 0–8%) (Table 2), with the most common reason being adhesions. The median length of stay (LOS) was similar for procedures: LVMR, median 3.3 (range 1.0–7.1) days; RVMR, median 4.3 (range 4.0–4.6) days (data from one centre via two reports) [45,46]; LRR, 4 days (data from one study) [7]. LOS possibly reflected local policy rather than clinical need, since day case procedures have been shown to be feasible [59,60]. The reason to keep patients in hospital for up to 1 week was not documented. Only one paper commented on LOS after open rectopexy (OR) (8.5 days) [54].

Summary evidence statements: perioperative data

- 1 Procedures are reported to take from 1.5 to 3.5 h, with consequent typical LOS of 4–5 days (level IV).
- 2 There was no clear variation between procedures in perioperative measures, although non-reporting by studies may have concealed differences (level IV).

Harms

There was a considerable heterogeneity in surgical morbidity reported as well as in overall procedural

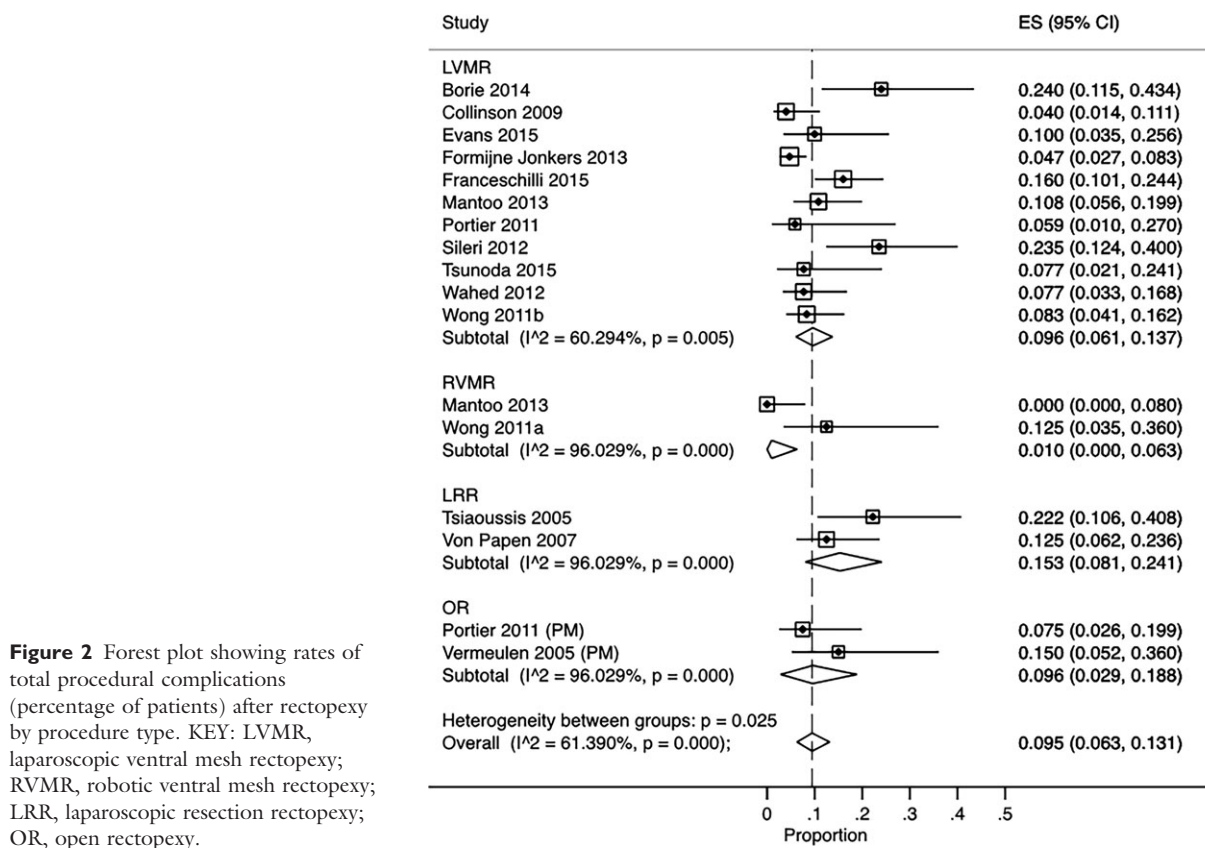
Table 2 Perioperative data by procedure. (a) Laparoscopic ventral mesh rectopexy (LVMR). (b) Robotic ventral mesh rectopexy (RVMR). (c) Laparoscopic resection rectopexy (LRR). (d) Open rectopexy (OR).

(a)											
Author	Year	N	Duration, mins	LOS	Total cx, %	Re-op, %	Mesh comps, %	Conv, %	Stoma, %	Mort, %	
Collinson [48]	2009	75	NR	2	4	0	0	1.3	0	0	
Kargar [55]	2011	39	NR	NR	NR	NR	NR	NR	NR	NR	
Portier [49]	2011	17 (40*)	NR	NR	7.5	0	0	NR	0	0	
Wong [45]	2011	25	159	4.6	NR	0	0	8	0	0	
Wong [50]	2011	84	NR	5	8.3	1.2	1.2	3.6	0	0	
Sileri [51]	2012	34	110	2	23.5	2.9	0	0	0	0	
Walhed [52]	2012	65	NR	2	7.6	1.5	0	1.5	0	0	
Formijne Jonkers [56]	2013	233	NR	5	4.7	0.4	0.9	2.5	0.4	0	
Gosselink [57]	2013	151	NR	NR	NR	NR	NR	NR	NR	NR	
Mantoo [46]	2013	74	163	5	11	0	0	4	0	0	
Boric [58]	2014	25	NR	7.1	24	0	NR	8	0	0	
Evans [34]	2015	30	NR	NR	10	0	3.4	NR	0	0	
Franceschilli [53]	2015	100	75	2	16	1	0	1	0	0	
Tsunoda [47]	2015	26	198	1	7.6	0	0	0	0	0	
(b)											
Wong [45]	2011	16	218	4.6	10.5	0	0	6.3	0	0	
Mantoo [46]	2013	44	191	4	0	0	0	5	0	0	
(c)											
Tsiaoussis [6]	2005	23 (27)*	NR	NR	22	NR	NA	NR	NR	0	
Von Papen [7]	2007	56	123	4	13	7	0	2	0	0	
(d)											
Author	Year	Operation	N	Duration, mins	LOS	Total cx, %	Re-op %	Mesh comps, %	Conv, %	Stoma, %	Mort, %
van Tets [4]	1995	Posterior mesh rectopexy	37	NR	NR	NR	NR	NR	NA	NR	NR
Vermeulen [54]	2005	Anterior mesh rectopexy	20	NR	8.5	15	0	0	NR	0	0
Portier [49]	2011	Anterior mesh rectopexy	23 (40)*	NR	NR	7.5	0	0	NR	0	0

LOS, length of stay; Cx, complications; Re-op, reoperation; Conv, conversion; Mort, mortality; NR, not reported.

*17 were laparoscopic, 23 open.

‡4 open.



complication rates (Fig. 2), with individual study rates varying from 0.0% to 23.5% (Table 2). Such heterogeneity may reflect different inclusion, thresholds or conventions for recording complications. Complications typically occurred in about 5–15% of patients. Pooled findings suggest that LRR might be associated with higher morbidity (total complications 15% for LRR *vs* 10% LVMR) although the findings were not statistically significant (*Z*-test, $P = 0.30$), and absolute patient numbers were small for LRR. The majority of complications were minor and included urinary tract infections (the most common reported), wound infections, haematoma formation, persistent pain and urinary retention. There were some more serious complications including port-site hernia, small bowel obstruction (usually after conversion but also related to mesh or suture adhesions), osteomyelitis and bladder injury (often when associated to bladder prolapse surgery). Specific mesh complication rates were rare, with only five occurrences after 939 procedures (0.53%). Overall, procedures were safe: conversion to laparotomy was rare (median 2%, range 0–8%) (Table 2), with the most common reason being adhesions; stoma was only reported in one study; no perioperative deaths were reported. Two open rectopexy

procedures (posterior mesh) were described, but data concerning post-operative complications were limited. There was no mortality recorded after any resuspension procedures.

Summary evidence statements: harms

- 1 Data on harms were inconsistently reported and heterogeneous, making estimates of harm tentative and imprecise (level IV).
- 2 Complications typically occurred in about 5–15% of procedures (level IV).
- 3 Mesh complications were reported in a minority of studies and occurred in about 0.5% (range 0–3.9%) of patients overall (level IV).
- 4 No mortality was recorded after any resuspension procedure, in a total of 1044 patients reporting this outcome (level IV).

Efficacy

Measurement of clinical outcomes was inconsistent and included the variable use of validated and un-validated scoring instruments for symptoms, such as Patient Assessment of Constipation Quality of Life (PAC-

QOL) and Patient Assessment of Constipation-Symptoms (PAC-SYM) scores (one study only) [57], Cleveland Clinic Constipation score [34,47,48,50,51,53,56], obstructed defecation syndrome (ODS) score [46,50,56,58], Knowles-Eccersley-Scott score (KESS) [48], Cleveland Clinic Incontinence score [46,49,56], Faecal Incontinence Severity Index (FISI) [47,48,51–53,56–58] and St Marks Incontinence score [48]. Global ‘success’ or ‘satisfaction’ ratings (GSR) were obtained via a variety of methods in 7 studies (where ‘satisfied’ or ‘very satisfied’, ‘good’, ‘very good’, and ‘excellent’ were interpreted as a positive outcome or overall improvement). Further studies also reported individual symptoms. No study reported acquiring data objectively using personnel not involved in the surgical care of the patient or data collection blinded to intervention status. Average reported studies follow-up was 31 months (range 12–72 months).

Accepting these methodological limitations, several reports assert that most patients undergoing rectal suspension procedures were satisfied. Meta-analysis of studies reporting a summary measure found considerable heterogeneity, which may reflect variation in measurements, patients or procedures. Overall improvement (a good or satisfactory outcome) was reported in 83% (95%CI: 74–91%, $I^2 = 77%$) of cases, based on 328 patients (Table 3; Fig. 3). Similar levels of improvement were recorded for LVMR and OR; only one small study reported improvement after LRR, and data were not available for RVMR.

The initial aim of ‘suspension’ procedures is to treat symptoms. Functional assessment of constipation is therefore the most important outcome. However, many patients also suffer from incontinence, typically post-defaecatory seepage. The various scoring instruments and functional outcomes employed are reported in Table 4. Generally, measures are too sparsely reported to be informative. For LVMR, Cleveland Clinic Constipation score improved from a median of 14 (range 7–18) to a median of 5 (range 4–7) in 6 studies providing pre- and post-operative data. Improvement in constipation was highly heterogeneous and only reported in a minority of studies, varying from 20% to 97%. By pooling data for LVMR, the reported improvement in constipation was 86% (95%CI: 20–97%).

While the clinical outcome has primacy, the most immediate visible consequence of surgery is to correct anatomy. Therefore, an assessment of anatomical recurrence is also important (although necessarily representing only a surrogate outcome). Anatomical recurrence rates varied between 0 to 21% (Fig. 4), but typically occurred in 2–7% of patients in most studies. Functional

Table 3 Overall improvement based on global satisfaction ratings (GSR). (a) Laparoscopic ventral mesh rectopexy (LVMR). (b) Robotic ventral mesh rectopexy (RVMR). (c) Laparoscopic resection rectopexy (LRR). d) Open rectopexy (OR).

(a)					
Author	Year		Follow up (months)	N	% success
Collinson [48]	2009		12	75	NR
Kargar [55]	2011		22	39	74
Portier [49]	2011		32	40 (17*)	97
Wong [45]	2011		12	25	NR
Wong [50]	2011		29	84	NR
Sileri [51]	2012		12	34	NR
Wahed [52]	2012		12	65	71
Formijne Jonkers [56]	2013		30	233	NR
Gosselink [57]	2013		12	151	NR
Mantoo [46]	2013		16	74	NR
Borie [58]	2014	NA		25	NR
Evans [34]	2015		36	30	NR
Franceschilli [53]	2015		20	100	89
Tsunoda [47]	2015		16	26	NR
(b)					
Wong [45]	2011		12	16	NR
Mantoo [46]	2013		16	44	NR
(c)					
Tsiaoussis [6]	2005		45	23 (27)‡	93
Von Papen [7]	2007		44	56	NR
(d)					
Author	Year	Operation	Follow up (months)	N	% success
van Tets [4]	1995	Posterior mesh rectopexy	72	37	70
Vermeulen [54]	2005	Anterior mesh rectopexy	18	20	63
Portier [49]	2011	Anterior mesh rectopexy	22	40 (23*)	97

Cx, complications; NR, not reported.

*17 were laparoscopic, 23 open.

‡4 open.

outcome data on robotic surgery and LRR were rarely available, but again anatomical correction was very likely achieved with both procedures. No conclusions about functional or anatomical outcomes could be made for the other rectopexy procedures.

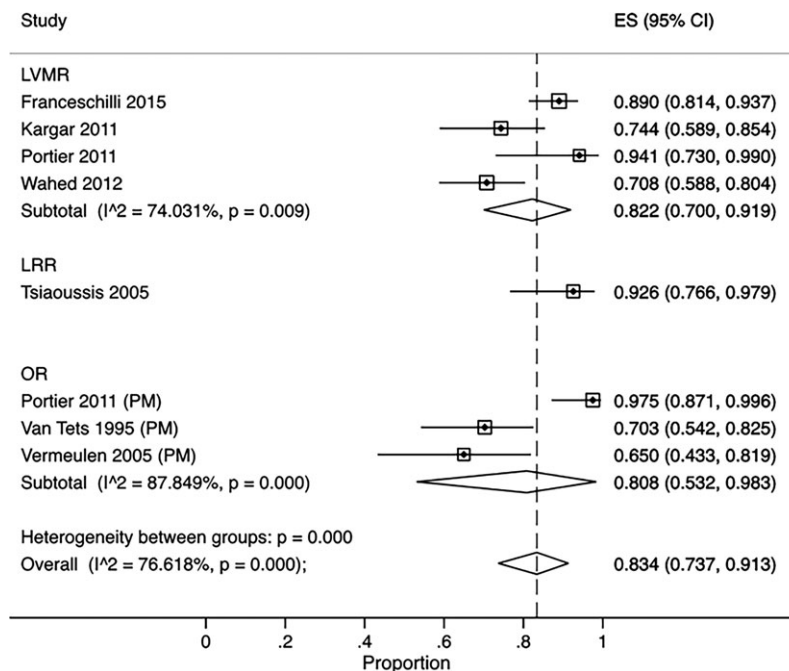


Figure 3 Forest plot showing rates of overall improvement (percentage of patients) after rectopexy by procedure type. KEY: LVMR, laparoscopic ventral mesh rectopexy; LRR, laparoscopic resection rectopexy; OR, open rectopexy.

Summary evidence statements: efficacy

- 1 Data on efficacy were inconsistently reported and findings heterogeneous, making estimates tentative and imprecise (level IV).
- 2 Although inconsistent, patient GSR suggest that a good or satisfactory outcome typically occurs in 83% (74–91%) of patients (level IV).
- 3 Similar levels of satisfaction were recorded for all procedures where data were available (LVMR, OR, LRR) (Level IV).
- 4 Patient-reported improvements in constipation occurred in 86% (95%CI: 20–97%) of patients after LVMR (Level IV).
- 5 Limited evidence found consistently improved Cleveland Clinic Constipation scores for patients undergoing LVMR (level IV).
- 6 Anatomical recurrence typically occurred in about 2–7% of patients (level IV).

Patient selection

Patient selection is perceived by many experts as extremely important when choosing the surgical approach. Whilst these procedures may be efficient at correcting normal anatomy (median 95%, range 79–100%), many underlying functional and organic pathologies may jeopardize the success of surgery in the attempt of ‘curing’ the patient [61]. Fifteen of 18 papers highlight the fact that all patients had undergone a period of conservative management. Other than this common feature,

selection was inconsistent. Even the diagnosis of abnormal anatomy varied throughout the literature. Studies described interventions for patients with: ungraded intussusception [7,54]; ‘rectoanal’ intussusception [6,47]; ‘high grade’ intussusception [57]; ‘grade 3 or 4’ intussusception [48,49,51,53,56]; ‘anterior or circumferential’ intussusception [4]; rectocele +/- intussusception [52,54,58] or +/- cystocele [13]; complex rectocele of above 2–3 cm [50]; multi-compartment pelvic floor disorders [46]; solitary rectal ulcer syndrome (SRUS) [34,55]. Thus, it was difficult to draw any conclusions as to which group could benefit from intervention. When summarising the data, the most common theme regarding patient selection is a high grade intussusception (i.e. rectoanal or Oxford grade ≥ 3). Table 5 lists the papers where this inclusion criterion has been adopted and one of the primary indications along with a summary of the outcome measures reported (if given in more than one paper). The conclusions from this sub-analysis resemble those described in the whole review.

SRUS deserves specific mention as two papers included patients specifically diagnosed with this condition [34,55]. Patients report passage of mucus and bloody liquid on defaecation, with an ulcer seen within the rectum. Treatment is conservative, initially using biofeedback and behavioral intervention. A proportion of patients present an element of internal intussusception, which may reflect the ulcerated area as the apex of the intussusception, repetitively traumatised with straining. The surgical correction of a prolapse (when

Table 4 Functional and clinical outcomes by procedure. (a) Laparoscopic ventral mesh rectopexy (LVMR). (b) Robotic ventral mesh rectopexy (RVMR). (c) Laparoscopic resection rectopexy (LRR). (d) Open rectopexy (OR).

(a)												
Author	Year	N	CCS pre	CCS post	ODS pre	ODS post	FISI pre	FISI post	Constipation improved %	Anatomical recurrence %		
Collinson [48]	2009	75	12	5	NR	NR	28	8	86	5		
Kargar [55]	2011	39	NR	NR	NR	NR	NR	NR	NR	NR		
Portier [49]	2011	40	NR	NR	NR	NR	NR	NR	Worse	2.5		
Wong [45]	2011	25	NR	NR	NR	NR	NR	NR	NR	0		
Wong [50]	2011	84	7	5	NR*	NR*	NR	NR	Improved	6.3		
Sileri [51]	2012	34	16	7	NR	NR	9	3	NR	5.9		
Wahed [52]	2012	65	NR*	NR*	NR	NR	NR*	NR*	97	3.7		
Formijne	2013	233	NR	8.1	NR*	NR*	NR*	NR*	81	2.6		
Jonkers [56]												
Gosselink [57]	2013	151	NR	NR	NR	NR	NR*	NR*	NR	NR		
Mantoo [46]	2013	74	NR	NR	NR†	NR†	NR	NR	NR	8		
Boric [58]	2014	25	NR	NR	16	7.6	24	2	20	NR		
Evans [34]	2015	30	17	6	NR	NR	19	NR	NR	21		
Franceschilli [53]	2015	100	18.4	5.5	NR	NR	NR*	NR*	89	14		
Tsunoda [47]	2015	26	11	4	NR	NR	30	6	NR	3.8		
(b)												
Wong [45]	2011	16	NR	NR	NR	NR	NR	NR	NR	NR		
Mantoo [46]	2013	44	NR	NR	NR	NR	NR	NR	NR†	8		
(c)												
Tsiaoussis [6]	2005	23 (27)‡	NR	NR	NR	NR	NR	NR	NR	0		
Von Papen [7]	2007	56	NR	NR	NR	NR	NR	NR	53	3.6		
(d)												
Author	Year	Operation	N	CCS pre	CCS post	CCS	ODS pre	ODS post	FISI pre	FISI post	Constipation improved %	Anatomical recurrence %
van Tets [4]	1995	Posterior mesh rectopexy	37	NR	NR	NR	NR	NR	NR	NR	NR	NR
Vermuelen [54]	2005	Anterior mesh rectopexy	20	NR	NR	NR	NR	NR	NR	NR	NR	NR
Portier [49]	2011	Anterior mesh rectopexy	40 (23°)	NR	NR	NR	NR	NR	NR	NR	Worse	2.5

NR, not reported; CCS, Cleveland Clinic Constipation score.

* significant improvement (no data given).

† decreased or improved but not significantly (no data given).

‡ 4 open; ° 23 open procedures.

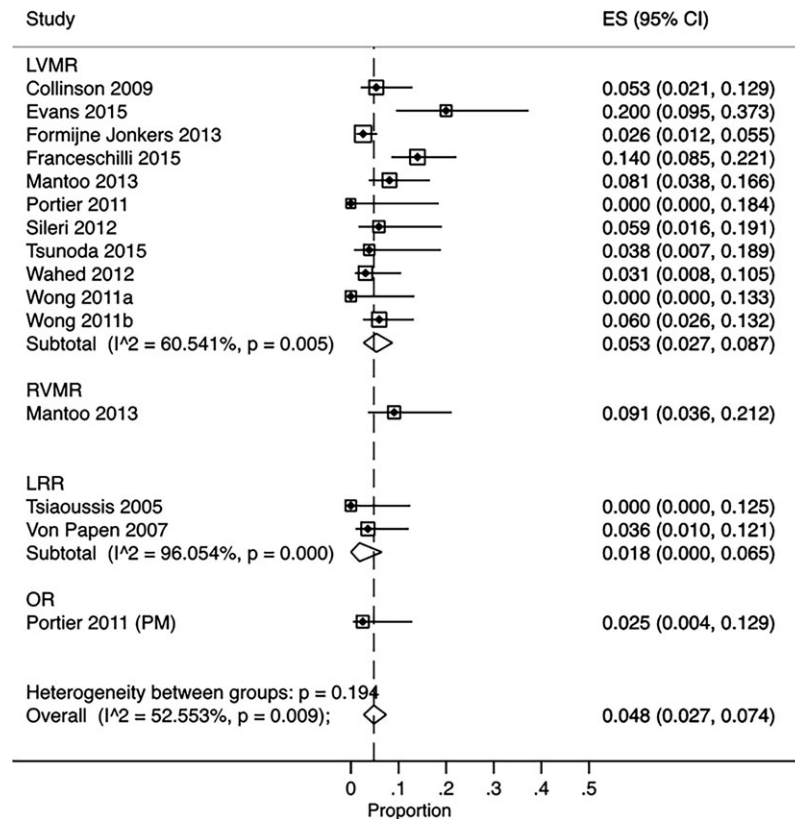


Figure 4 Forest plot showing rates of anatomical recurrence (percentage of patients) after rectopexy by procedure type. KEY: LVMR, laparoscopic ventral mesh rectopexy; RVMR, robotic ventral mesh rectopexy; LRR, laparoscopic resection rectopexy; OR, open rectopexy.

Table 5 Summary of papers where participants had a high grade internal intussusception (rectoanal, Oxford grade ≥ 3).

Author	Year	Op	N	FU	% success	CCS pre	CCS post	FISI pre	FISI post	Constipation improved	Anatomical recurrence
Tsiaoussis [6]	2005	†	27	45	93	NR	NR	NR	NR	NR	0
Collinson [48]	2009	LVMR	75	12	NR	12	5	28	8	86	5
Portier [49]	2011	*	40	22	97	NR	NR	NR	NR	Worse	2.5
Wong [45]	2011	‡	41	12	NR	NR	NR	NR	NR	NR	6.3
Sileri [51]	2012	LVMR	34	12	NR	16	7	9	3	NR	5.9
Formijne Jonkers [56]	2013	LVMR	233	30	NR	8.1	NR	NR	NR	NR	2.6
Gosselink [57]	2013	LVMR	151	12	NR	NR	NR	NR	NR	NR	NR
Boric [58]	2014	LVMR	52	1–18	NR	NR	NR	24	2	20	NR
Evans [34]	2015	LVMR	30	36	NR	17	6	19	NR	NR	21
Franceschilli [53]	2015	LVMR	100	20	89	18.4	5.5	NR	NR	89	14
Tsunoda [47]	2015	LVMR	26	16	NR	11	4	30	6	NR	3.8

*Lap and Open Ant mesh rectopexy.

†Lap resection rectopexy.

‡LVMR and RVMR.

detected) may be reasonable in the hope of resolving the ulcer. Data on a total of 75 patients with SRUS who have undergone LVMR are available from the two papers. Healing of the ulcer occurred in 78% of patients after surgery.

Summary evidence statements: patient selection

1 Although patient selection is perceived as vital in predicting outcome, it was inconsistently documented (level IV).

- 2 One common indication appears to be high grade rectal intussusception (level IV).
- 3 For high grade intussusception, LVMR, RVMR and resection rectopexy typically correct anatomy in about 80–100% of cases (level IV).
- 4 If SRUS is associated with prolapse, a LVMR typically results in healing of the ulcer in around 80% of patients (level IV).

Discussion

A systematic review of evidence for the perioperative and long terms benefits and harms of rectal suspension procedures identified no high quality studies. The evidence base is characterised by observational studies of variable and often uncertain methodological quality. Definitions are poor, e.g. grading of complications was inconsistent. Future studies should provide robust and comparative evidence for clinicians to support patient decision making, in terms both of the incremental benefits and harms of suspension procedures. A Clavien-Dindo (or equivalent) classification is essential. Greater understanding is required of the mediating effects of prognostic factors particularly preoperative definition of both functional and radiological parameters that impact upon treatment success. Relevant to future research would be to define a minimum set of outcomes for reporting future studies. Finally, and most obviously, the evidence base requires urgent augmentation with some high quality studies focused on having at least one well powered randomized controlled trial to inform future clinical decision making.

Acknowledgments

We would like to acknowledge the following people in relation to the NIHR CapaCiTY working group: Mr Steven Brown, Sheffield Teaching Hospitals NHS Foundation Trust; Mr Kenneth Campbell, The University of Dundee, NHS Education for Scotland; Mr Mark Chapman, Heart of England NHS Trust; Mr Andrew Clarke, Poole Hospital NHS Foundation Trust; Mr Neil Cruickshank, Sandwell and West Birmingham Hospitals NHS Trust; Mr Anthony Dixon, University of Bristol, Bristol, UK; Dr Christopher Emmett, County Durham and Darlington NHS Foundation Trust; Mr Ugo Grossi, Queen Mary University of London; Dr Richard Hooper, PCTU, Queen Mary University of London; Miss Emma Horrocks, University Hospital Southampton NHS Foundation Trust; Professor Charles Knowles, Queen Mary University of London; Mr Jon Lacy-Colson, Shrewsbury and Telford Hospital NHS Trust; Mr Ian Lindsey, Oxford University Hospitals NHS Trust;

Professor James Mason, University of Warwick, Coventry; Mr Mark Mercer-Jones, Gateshead Health NHS Foundation Trust; Mr Andrew Miller, University Hospitals of Leicester NHS Trust; Mr David Pares, Hospital Germans Trias i Pujol, Barcelona, Spain; Miss Sophie Pilkington, University Hospital Southampton NHS Foundation Trust; Mr Neil Smart, Royal Devon & Exeter NHS Foundation Trust; Ms Natasha Stevens, PCTU, Queen Mary University of London; Professor Douglas Tincello, University Hospitals of Leicester NHS Trust; Miss Karen Telford, South Manchester NHS Foundation Trust; Mr Paul Vollebregt, Queen Mary University of London; Mr Andrew Williams, Guy's and Thomas' NHS Foundation Trust; Professor Yan Yiannakou, County Durham and Darlington NHS Foundation Trust.

Conflict of interest

The authors declare no conflict of interest.

Funding

This project was funded by the National Institute for Health Research (NIHR) Programme Grant for Applied Research (RP-PG-0612-20001). The views and opinions expressed in this report are those of the authors and are not those of the PGfAR Programme, NIHR, the UK National Health Service, or the UK Department of Health.

References

- 1 D'Hoore A, Penninckx F. Obstructed defecation. *Colorectal Dis* 2003; **5**: 280–7.
- 2 Shorvon PJ, McHugh S, Diamant NE, Somers S, Stevenson GW. Defecography in normal volunteers: results and implications. *Gut* 1989; **30**: 1737–49.
- 3 Tou S, Brown SR, Nelson RL. Surgery for complete (full-thickness) rectal prolapse in adults. *Cochrane Database Syst Rev*, 2015; **11**: CD001758.
- 4 Vantets WF, Kuijpers JHC. Internal rectal intussusception - fact or fancy. *Dis Colon Rectum* 1995; **38**: 1080–3.
- 5 Graf W *et al.* Functional results after abdominal suture rectopexy for rectal prolapse or intussusception. *Eur J Surg* 1996; **162**: 905–11.
- 6 Tsiaoussis J *et al.* Rectoanal intussusception: presentation of the disorder and late results of resection rectopexy. *Dis Colon Rectum* 2005; **48**: 838–44.
- 7 von Papen M *et al.* Functional results of laparoscopic resection rectopexy for symptomatic rectal intussusception. *Dis Colon Rectum* 2007; **50**: 50–5.
- 8 Johnson E *et al.* Long-term outcome after resection rectopexy for internal rectal intussusception. *ISRN Gastroenterol* 2012; **2012**: 824671.

- 9 Biviano I *et al.* Comparative outcome of stapled trans-anal rectal resection and macrogol in the treatment of defecation disorders. *World J Gastroenterol* 2011; **17**: 4199–205.
- 10 Hirst GR *et al.* The role of rectocele repair in targeted patients with obstructed defaecation. *Colorectal Dis* 2005; **7**: 159–63.
- 11 Sabbagh R *et al.* Long-term anatomical and functional results of laparoscopic promontofixation for pelvic organ prolapse. *BJU Int* 2010; **106**: 861–6.
- 12 Sitzler PJ *et al.* Long-term clinical outcome of surgery for solitary rectal ulcer syndrome. *Br J Surg* 1998; **85**: 1246–50.
- 13 Bruch HP *et al.* Laparoscopic surgery for rectal prolapse and outlet obstruction. *Dis Colon Rectum* 1999; **42**: 1189–94.
- 14 Schultz I *et al.* Whole gut transit is prolonged after Ripstein rectopexy. *Eur J Surg* 1999; **165**: 242–7.
- 15 Badrek-Amoudi AH *et al.* Laparoscopic ventral mesh rectopexy in the management of solitary rectal ulcer syndrome: a cause for optimism? *Colorectal Dis* 2013; **15**: 575–81.
- 16 Laubert T *et al.* Obstructive defecation syndrome: 19 years of experience with laparoscopic resection rectopexy. *Tech Coloproctol* 2013; **17**: 307–14.
- 17 Mackenzie H, Dixon AR. Proficiency gain curve and predictors of outcome for laparoscopic ventral mesh rectopexy. *Surgery* 2014; **156**: 158–67.
- 18 Owais AE *et al.* Laparoscopic ventral mesh rectopexy in male patients with internal or external rectal prolapse. *Colorectal Dis* 2014; **16**: 995–1000.
- 19 Gravie JF, Maigne C. “Wrap technique”: a new operative procedure using a self-adhesive prosthesis for laparoscopic ventral rectopexy. *Tech Coloproctol* 2015; **19**: 361–3.
- 20 Gultekin FA *et al.* Safety of laparoscopic ventral rectopexy in the elderly: results from a nationwide database. *Dis Colon Rectum* 2015; **58**: 339–43.
- 21 Abet E *et al.* Sexual function and laparoscopic ventral rectopexy for complex rectocele. *Colorectal Dis* 2012; **14**: e721–6.
- 22 Ramage L *et al.* Is robotic ventral mesh rectopexy better than laparoscopy in the treatment of rectal prolapse and obstructed defecation? A meta-analysis *Tech Coloproctol* 2015; **19**: 381–9.
- 23 Faucheron JL *et al.* Anterior rectopexy for full-thickness rectal prolapse: technical and functional results. *World J Gastroenterol* 2015; **21**: 5049–55.
- 24 Gouvas N *et al.* Ventral colpoproctopexy for overt rectal prolapse and obstructed defaecation syndrome: a systematic review. *Colorectal Dis* 2015; **17**: O34–46.
- 25 Rondelli F *et al.* Robot-assisted or conventional laparoscopic rectopexy for rectal prolapse? Systematic review and meta-analysis. *Int J Surg* 2014; **12**(Suppl 2): S153–9.
- 26 Cadeddu F *et al.* Focus on abdominal rectopexy for full-thickness rectal prolapse: meta-analysis of literature. *Tech Coloproctol* 2012; **16**: 37–53.
- 27 Samaranayake CB *et al.* Systematic review on ventral rectopexy for rectal prolapse and intussusception. *Colorectal Dis* 2010; **12**: 504–12.
- 28 Shastri-Hurst N, McArthur DR. Laparoscopic rectopexy for rectal prolapse: will it be the gold standard? *Indian J Surg* 2014; **76**: 461–6.
- 29 Cullen J, Rosselli JM, Gurland BH. Ventral rectopexy for rectal prolapse and obstructed defecation. *Clin Colon Rectal Surg* 2012; **25**: 34–6.
- 30 Harmston C, Jones O. The evolution of laparoscopic surgery for rectal prolapse. *Int J Surg* 2011; **9**: 370–3.
- 31 Senagore AJ. Management of rectal prolapse: the role of laparoscopic approaches. *Semin Laparosc Surg* 2003; **10**: 197–202.
- 32 Lahr SJ *et al.*, Operative management of severe constipation. *Am Surg* 1999; **65**: 1117–21: discussion 1122–3.
- 33 Silvis R *et al.* Abdominal rectovaginopexy - Modified technique to treat constipation. *Dis Colon Rectum* 1999; **42**: 82–8.
- 34 Evans C *et al.* Laparoscopic ventral rectopexy is effective for solitary rectal ulcer syndrome when associated with rectal prolapse. *Colorectal Dis* 2014; **16**: O112–6.
- 35 Schultz I *et al.* Continence is improved after the Ripstein rectopexy - Different mechanisms in rectal prolapse and rectal intussusception? *Dis Colon Rectum* 1996; **39**: 300–6.
- 36 Orrom WJ *et al.* Rectopexy is an ineffective treatment for obstructed defecation. *Dis Colon Rectum* 1991; **34**: 41–6.
- 37 Tweedie DJ, Varma JS. Long-term outcome of laparoscopic mesh rectopexy for solitary rectal ulcer syndrome. *Colorectal Dis* 2005; **7**: 151–5.
- 38 van den Esschert JW *et al.* Laparoscopic ventral rectopexy for obstructed defecation syndrome. *Surg Endosc* 2008; **22**: 2728–32.
- 39 Portier G *et al.* Malone antegrade colonic irrigation: ileal neoappendicostomy is the preferred procedure in adults. *Int J Colorectal Dis* 2006; **21**: 458–60.
- 40 Johnson E *et al.* Resection rectopexy for internal rectal intussusception reduces constipation and incomplete evacuation of stool. *Eur J Surg Suppl* 2003; **588**: 51–6.
- 41 Maggiori L *et al.* Laparoscopic ventral rectopexy: a prospective long-term evaluation of functional results and quality of life. *Tech Coloproctol* 2013; **17**: 431–6.
- 42 Schultz I *et al.* Long-term results and functional outcome after Ripstein rectopexy. *Dis Colon Rectum* 2000; **43**: 35–43.
- 43 Wong MTC *et al.* Robotic versus laparoscopic rectopexy for complex rectocele: a prospective comparison of short-term outcomes. *Dis Colon Rectum* 2011; **54**: 342–6.
- 44 Formijne Jonkers HA *et al.* Evaluation and surgical treatment of rectal prolapse: an international survey. *Colorectal Dis* 2013; **15**: 115–9.
- 45 Wong MT *et al.* Minimally invasive ventral mesh rectopexy for complex rectocele: impact on anorectal and sexual function. *Colorectal Dis* 2011; **13**: e320–6.
- 46 Mantoo S *et al.* Is robotic-assisted ventral mesh rectopexy superior to laparoscopic ventral mesh rectopexy in the management of obstructed defaecation? *Colorectal Dis* 2013; **15**: e469–75.

- 47 Tsunoda A *et al.* Laparoscopic ventral rectopexy for rectoanal intussusception: postoperative evaluation with proctography. *Dis Colon Rectum* 2015; **58**: 449–56.
- 48 Collinson R *et al.* Laparoscopic ventral rectopexy for internal rectal prolapse: short-term functional results. *Colorectal Dis* 2010; **12**: 97–104.
- 49 Portier G *et al.* The effect of abdominal ventral rectopexy on faecal incontinence and constipation in patients with internal intra-anal rectal intussusception. *Colorectal Dis* 2011; **13**: 914–7.
- 50 Wong M *et al.* Safety and efficacy of laparoscopic ventral mesh rectopexy for complex rectocele. *Colorectal Dis* 2011; **13**: 1019–23.
- 51 Sileri P *et al.* Laparoscopic ventral rectopexy for internal rectal prolapse using biological mesh: postoperative and short-term functional results. *J Gastrointest Surg* 2012; **16**: 622–8.
- 52 Wahed S *et al.* Short-term results for laparoscopic ventral rectopexy using biological mesh for pelvic organ prolapse. *Colorectal Dis* 2012; **14**: 1242–7.
- 53 Franceschilli L *et al.* Laparoscopic ventral rectopexy using biologic mesh for the treatment of obstructed defaecation syndrome and/or faecal incontinence in patients with internal rectal prolapse: a critical appraisal of the first 100 cases. *Tech Coloproctol* 2015; **19**: 209–19.
- 54 Vermeulen J *et al.* Anterolateral rectopexy for correction of rectoceles leads to good anatomical but poor functional results. *Tech Coloproctol* 2005; **9**: 35–41; discussion 41.
- 55 Kargar S *et al.* Laparoscopic rectopexy in solitary rectal ulcer. *Acta Med Iran* 2011; **49**: 810–3.
- 56 Formijne Jonkers HA *et al.* Laparoscopic ventral rectopexy for rectal prolapse and symptomatic rectocele: an analysis of 245 consecutive patients. *Colorectal Dis* 2013; **15**: 695–9.
- 57 Gosselink MP *et al.* Impact of slow transit constipation on the outcome of laparoscopic ventral rectopexy for obstructed defaecation associated with high grade internal rectal prolapse. *Colorectal Dis* 2013; **15**: e749–56.
- 58 Borie F *et al.* Laparoscopic ventral rectopexy for the treatment of outlet obstruction associated with recto-anal intussusception and rectocele: a valid alternative to STARR procedure in patients with anal sphincter weakness. *Clin Res Hepatol Gastroenterol* 2014; **38**: 528–34.
- 59 Powar MP, Ogilvie JW Jr, Stevenson AR. Day-case laparoscopic ventral rectopexy: an achievable reality. *Colorectal Dis* 2013; **15**: 700–6.
- 60 George R *et al.* Re: day-case laparoscopic ventral rectopexy. *Colorectal Dis* 2013; **15**: 1450–1.
- 61 Pescatori M, Spyrou M and Pulvirenti d'Urso A. A prospective evaluation of occult disorders in obstructed defecation using the 'iceberg diagram'. *Colorectal Dis* 2007; **9**: 452–6.