



Morgen, C. S., Andersen, P. K., Mortensen, L. H., Howe, L. D., Rasmussen, M., Due, P., ... Andersen, A-M. N. (2017). Socioeconomic disparities in birth weight and body mass index during infancy through age 7years: a study within the Danish National Birth Cohort. *BMJ Open*, 7(1), [e011781]. <https://doi.org/10.1136/bmjopen-2016-011781>

Publisher's PDF, also known as Version of record

License (if available):
CC BY-NC

Link to published version (if available):
[10.1136/bmjopen-2016-011781](https://doi.org/10.1136/bmjopen-2016-011781)

[Link to publication record in Explore Bristol Research](#)
PDF-document

This is the final published version of the article (version of record). It first appeared online via BMJ Publishing at <http://bmjopen.bmj.com/content/7/1/e011781>. Please refer to any applicable terms of use of the publisher.

University of Bristol - Explore Bristol Research

General rights

This document is made available in accordance with publisher policies. Please cite only the published version using the reference above. Full terms of use are available:
<http://www.bristol.ac.uk/pure/about/ebr-terms>

BMJ Open Socioeconomic disparities in birth weight and body mass index during infancy through age 7 years: a study within the Danish National Birth Cohort

Camilla Schmidt Morgen,^{1,2} Per Kragh Andersen,³ Laust Hvas Mortensen,² Laura D Howe,⁴ Mette Rasmussen, Pernille Due,⁵ Thorkild I A Sørensen,^{1,4,6} Anne-Marie Nybo Andersen²

To cite: Morgen CS, Andersen PK, Mortensen L H, *et al*. Socioeconomic disparities in birth weight and body mass index during infancy through age 7 years: a study within the Danish National Birth Cohort. *BMJ Open* 2017;7:e011781. doi:10.1136/bmjopen-2016-011781

► Prepublication history and additional material is available. To view please visit the journal (<http://dx.doi.org/10.1136/bmjopen-2016-011781>).

Received 4 March 2016
Revised 7 November 2016
Accepted 15 December 2016



CrossMark

For numbered affiliations see end of article.

Correspondence to

Dr Camilla Schmidt Morgen; Camilla@smorgen.dk

ABSTRACT

Background: Socioeconomic inequalities in birth weight and in body mass index (BMI) later in childhood are in opposite directions, which raises questions about when during childhood the change in direction happens. We examined how maternal and paternal education and household income were associated with birthweight z-scores and with BMI z-scores at age 5 and 12 months and 7 years, and we examined the socioeconomic differences in the tracking of these z-scores across infancy and childhood.

Methods: The associations were studied in a cohort of children in the Danish National Birth Cohort, single born between 1997 and 2003, for whom information on body size from at least 1 of 4 time points (n=85 062) was recorded. We examined the associations using linear mixed-effects modelling.

Results: Children from families with a low maternal and paternal educational level changed their body size z-scores upwards between birth and age 7 years. At age 5 and 12 months, there were no educational gradient. A low maternal educational level was associated with lower birth weight for gestational age z-scores at birth for boys (−0.199; 95% CI −0.230 to −0.169) and girls (−0.198; 95% CI −0.229 to −0.167) and higher BMI z-scores at age 7 for boys (0.198; 95% CI 0.154 to 0.242) and girls (0.218; 95% CI 0.173 to 0.264). There was not a similarly clear pattern in the tracking between different household income groups. However, a low household income level was associated with higher z-scores of both birth weight and BMI at age 7 years, but with a much weaker gradient at 5 and 12 months.

Conclusions: The educational gradient shifts from positive with birth weight, to none during infancy to inverse with BMI at age 7 years. In contrast, the income gradient was positive at birth and at 7 years and much weaker during infancy.

Strengths and limitations of this study

- A strength of this study is the large sample size.
- Another strength is the repeated measures of body size and several indicators of socioeconomic position (parental education and household income).
- By linking the Danish National Birth Cohort (DNBC) to Statistics Denmark via the unique Danish personal identification number, it was possible to obtain information on socioeconomic indicators on almost all mothers participating in the DNBC.
- A limitation is the parental-reported measurements of height and weight at age 7 years.
- Another limitation is the selection for participation in the DNBC and for participation for follow-up, which could introduce bias.

INTRODUCTION

Childhood overweight and obesity pose a troubling threat to future public health. Although the increasing trends in childhood overweight and obesity seen in developed countries from the 1970s^{1–4} have been followed by levelling off,^{5,6} the prevalence has stabilised at a high level. Since childhood overweight and obesity track strongly into adulthood⁷ with adverse health consequences,⁸ we need to trace the roots of the overweight epidemic by looking at explanatory factors as early in life as possible in order to develop effective prevention strategies. Children from less advantaged socioeconomic homes have traditionally had lower birth weight,⁹ but in high-income countries these children have an increased risk of



overweight and obesity later in life.^{10–13} While there is evidence for an inverse relationship between socioeconomic position and body mass index (BMI) status among children, adolescents and adults,^{10–12 14} these studies do not clearly indicate how early the socioeconomic inequalities in BMI and overweight emerge and how inequalities change and track across early childhood. Socioeconomic inequality in overweight among children has previously been addressed and found to be inconsistent,¹² but in the recent cohorts, an increasing number of studies report an inverse socioeconomic gradient in child and adolescent overweight and obesity.¹⁴ However, studies with data from birth onwards yield very mixed results.^{15–20} Therefore, in a large Danish birth cohort, we aimed to investigate:

1. Whether individual changes in the tracking of anthropometry z-score from birth to age 7 years differ according to parental educational level and household income level at birth.
2. How maternal and paternal educational level and household income are associated with birth weight for gestational age z-scores and with BMI z-scores at age 5, 12 months and 7 years.

We hypothesised that there would be socioeconomic inequalities in the tracking and that the socioeconomic gradient in the birthweight z-score would be positive and that the gradient would shift during infancy and be inverse at age 7 years.

MATERIALS AND METHODS

Ethics statement: All participants in the Danish National Birth Cohort (DNBC) gave written informed consent. Data were analysed anonymously and the storage and linking of the data in this study were approved by the Danish Data Protection Agency and by the steering committee of the DNBC.

Study population

This study was based on data from the DNBC. Between 1996 and 2002, pregnant women in Denmark were invited to the cohort at their first antenatal visit to a general practitioner (GP). Women were eligible if they were able to complete a 30–40 min telephone interview in Danish. Approximately 30% of all pregnant women in Denmark during the period of enrolment participated in the DNBC and the response rate among all invited women has been estimated to be 60%.²¹

The women provided information on exposures in four computer-assisted telephone interviews, in gestational weeks 16 and 31 and at child age 6 and 18 months. When the child turned 7 years of age, the parents were asked to fill in a questionnaire. A total of 100 418 pregnancies were enrolled in the cohort. We initially included the 88 181 live-born singleton children who were born at term. A total of 85 062 of these had valid information on the exposure measures and at least one measurement of birth weight for gestational age or BMI at age 5, 12 months or

7 years and defined the study population ([figure 1](#)). More details about the cohort are presented elsewhere.²¹

Measurement of outcomes

Measurements of weight and length at birth were taken and registered by midwives and the information was obtained by linking the cohort with the Danish Medical Birth Registry.²² The GP takes routine measurements of height/length and weight at age 5 and 12 months. The measurements from these examinations are recorded in a ‘child’s book’ which is kept by the parents and used for communication between the health visitors and the GP. In the telephone interview 18 months after the birth, the parents were asked to report the values from the ‘child’s book’. In the 7-year follow-up (mean follow-up was 7.1 years), the parents reported the latest measures of height and weight of the child. A total of 21% of the 7-year measurements were made by a GP or by a health visitor and the rest were made by the parents. The outcomes of interest were: birth weight for gestational age and BMI z-scores at age 5 months, 12 months and 7 years. Birthweight z-scores were calculated per gestational week at birth for boys and girls separately, and were based on the internal reference of 84 782 newborn children. BMI z-scores were calculated using an internal reference value ($z\text{-score} = (\text{observed value} - \text{mean}) / \text{SD}$) and were adjusted for exact age at the time of the measurement. For descriptive purposes ([table 1](#)), we categorised overweight according to the International Obesity Taskforce Reference (IOTF).²³

Measurement of exposures

By linking the cohort participants to the Integrated Database for Labor Market Research at Statistics Denmark,²⁴ we were able to collect information on the individual level of education and income for almost all participants in the cohort. The information was collected using 1st October in the year before childbirth as the time of exposure. Individual information on the longest completed education was categorised according to the International Standard Classification of Education system and converted into three groups: 9 years or less (preprimary, primary and lower secondary), 10–12 years (upper secondary, postsecondary) and 13 years or more (tertiary).

Income was measured as the taxable household income in the mother’s household, calculated as the sum of the adults’ income adjusted for the number of adults and children in the household uplifted to 0.6 to account for the ‘equivalence elasticity’, the power by which economic needs change with household size (taxable household income/total number of residents in the household^{0.6}).²⁵ We calculated income quintiles year by year (1996–2002) and summarised these into one measure.

STATISTICAL ANALYSIS

The associations were analysed using linear mixed-effects models calculating the differences

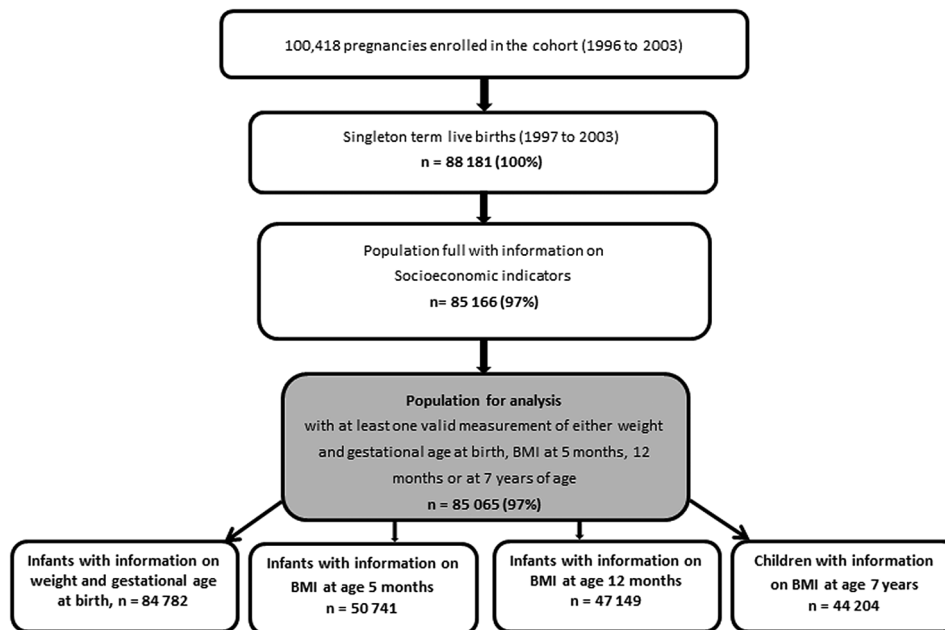


Figure 1 Flow chart showing the sampling in the study from the DNBC 1996–2010. BMI, body mass index; DNBC, Danish National Birth Cohort.

between mean birthweight z-scores and the differences between mean BMI z-scores with 95% CIs. The linear mixed-effects model accounted for the intrachild correlation of the repeated BMI measurements by allowing all individuals to have different (random) intercepts.²⁶ Allowing for an interaction between socioeconomic position and age allowed us to study body size changes over time (tracking) from birth to age 7 in different groups of socioeconomic position, as well as socioeconomic differences in birthweight and BMI z-scores at different ages. Different models were being fit for each measure of socioeconomic position. The models are explained in detail in online supplementary information S1. Given the gender differences documented in the literature on socioeconomic disparities in overweight and obesity,^{10 15} we decided, a priori, to stratify the analyses by sex. To test the robustness of our results, (1) we conducted the analyses with small for gestational age (SGA; below the 10th centile of the sex-specific and gestational age-specific birthweight distribution) as a measure of small size at birth instead of birth weight for gestational age, (2) we conducted the analyses with exclusion of mothers who were students and self-employed mothers.

We further examined the distribution of income by educational groups and education by income groups (see online supplementary table S2a and S2b).

RESULTS

Sample characteristics

A total of 85 062 pregnancies with information on exposure measures and at least one measure of birth weight or child BMI were included in the analysis (figure 1). The average gestational age-specific birth weight and

BMI at age 5, 12 months and 7 years by parental socioeconomic indicator can be seen in table 1. Parental and child characteristics by parental socioeconomic indicator are presented in table 2. The percentages of overweight (including obese) among the 7-year-old children were greatest for the lowest educational and income groups (table 1). Women with low educational level were younger, had a younger partner, had more often given birth before, had a higher mean BMI, had partners with a higher BMI and were more often living in a single-parent household. The patterns were similar for paternal educational level and for families with a low relative household income (table 2).

Tracking of anthropometry over time according to parental socioeconomic position at birth

The tracking of BMI can be illustrated by setting the birthweight z-score as the reference. We compared the change in body size z-score from birth to age 7 years between educational groups and between income groups. We found that the changes in z-scores at age 7 years were positive for children with parents with <12 years of completed education, whereas the changes in z-scores were negative for children with parents with >12 years of completed education. By using the mean BMI and height for boys (BMI 15.7, SD 1.7, height 126.4 cm) and girls (BMI 15.7, SD 1.8, height 125.4 cm) in the cohort, the effect estimates can be translated into kg for illustration. Having a mother with low educational level was associated with a 0.5 kg *higher* weight for boys and a 0.6 kg *higher* weight for girls at age 7 years than if the children had followed their growth trajectory from birth. A high paternal educational level was associated

Table 1 Weight characteristics of the children in relation to parental educational level and household income, by gender in the DNBC 1996–2010

Characteristics	n	Maternal educational level (%)			Paternal educational level (%)			Household income (%)				
		<10 years	10–12 years	>12 years	<10 years	10–12 years	>12 years	<20	20–<40	40–<60	60–<80	80–100
Boys												
Mean birth weight,* kg (SD)	43 347	3.7 (0.5)	3.7 (0.5)	3.7 (0.5)	3.7 (0.5)	3.7 (0.5)	3.7 (0.5)	3.7 (0.5)	3.7 (0.5)	3.7 (0.5)	3.7 (0.5)	3.7 (0.5)
Mean 5 months BMI (SD)	25 790	17.0 (1.6)	17.0 (1.6)	17.0 (1.6)	17.0 (1.6)	17.0 (1.6)	17.0 (1.6)	17.0 (1.7)	17.0 (1.7)	17.0 (1.7)	16.9 (1.6)	16.9 (1.6)
Mean 12 months BMI (SD)	23 880	17.3 (1.6)	17.3 (1.6)	17.2 (1.6)	17.3 (1.6)	17.3 (1.6)	17.3 (1.6)	17.3 (1.6)	17.3 (1.6)	17.3 (1.6)	17.2 (1.6)	17.3 (1.6)
Mean 7-year BMI (SD)	22 703	15.7 (1.6)	15.9 (1.8)	15.6 (1.5)	15.9 (1.8)	15.8 (1.6)	15.6 (1.5)	15.8 (1.7)	15.8 (1.7)	15.7 (1.6)	15.7 (1.6)	15.6 (1.4)
Overweight (%) age 7, IOTF†	22 703	8.7	9.4	6.7	12.6	9.0	6.5	10.6	10.0	8.9	8.5	5.8
Girls												
Mean birth weight,* kg (SD)	41 435	3.6 (0.5)	3.6 (0.5)	3.6 (0.5)	3.5 (0.5)	3.6 (0.5)	3.6 (0.5)	3.6 (0.5)	3.6 (0.5)	3.6 (0.5)	3.6 (0.5)	3.6 (0.5)
Mean 5 months BMI (SD)	24 867	16.4 (1.6)	16.5 (1.6)	16.4 (1.6)	16.5 (1.7)	16.4 (1.6)	16.4 (1.6)	16.5 (1.6)	16.5 (1.6)	16.4 (1.6)	16.4 (1.6)	16.4 (1.6)
Mean 12 months BMI (SD)	23 269	16.8 (1.6)	16.9 (1.7)	16.8 (1.6)	16.9 (1.6)	16.8 (1.6)	16.8 (1.6)	16.8 (1.6)	16.9 (1.6)	16.8 (1.6)	16.8 (1.6)	16.8 (1.6)
Mean 7-year BMI (SD)	21 524	15.6 (1.7)	15.9 (2.0)	15.5 (1.6)	15.9 (2.0)	15.7 (1.8)	15.5 (1.6)	15.7 (1.8)	15.7 (1.8)	15.6 (1.6)	15.57 (1.6)	15.57 (1.6)
Overweight (%) age 7, IOTF†	21 524	11.1	11.8	9.1	15.1	11.7	8.3	12.4	13.8	10.8	9.8	8.9

*Term births only.

†Cole *et al.*²³

BMI, body mass index; DNBC, Danish National Birth Cohort; IOTF, International Obesity Taskforce Reference.

with a 0.6 kg *lower* weight for boys and a 0.4 kg lower weight for girls at age 7 years than if the children had followed their growth trajectory from birth.

The test for differences in tracking between groups showed that the differences in tracking in z-scores from birth to age 7 years were statistically significantly different between the educational groups, such that children born from parents in lower educational groups increased their body size z-scores more than did children from higher socioeconomic groups (all p values for the interaction between time and education were below 0.05; [table 3](#)). For household income, the changes in z-scores from birth to age 7 years were small and for most estimates not statistically significant. The test for differences in tracking between household income groups showed that tracking differed significantly, but there were no clear and consistent patterns in the tracking.

Socioeconomic differences in birthweight z-scores and BMI z-scores at age 5, 12 months and 7 years

Birth: For boys and girls, we found an association between low maternal and educational level and lower birthweight z-scores ([figure 2](#) and online supplementary table S1). A household income below the highest quintile was associated with greater birthweight z-scores for boys and girls ([table 4](#)).

Age 5 and 12 months: We found no educational or income gradient in infancy BMI, indicating that the educational gradient shifted from positive to none and that the income gradient shifted from inverse to none in this age period. The estimates were mostly positive, but the majority of the CIs overlapped with the null and the tests for trends were not statistically significant, except for paternal educational level among girls aged 12 months and household income among boys aged 5 months ([figure 2](#), [table 4](#) and online supplementary table S1).

Age 7 years: Clear socioeconomic gradients in BMI z-scores were observed for all socioeconomic indicators such that a relatively low socioeconomic position, measured by education and income, was associated with higher BMI z-scores. Thus, the inverse socioeconomic gradient emerged after 12 months of age. For boys and girls with average BMI and height, the difference between lowest versus highest educational group can be translated into 0.5 and 0.6 kg, respectively. Similar estimates were seen for paternal educational level. For boys and girls, the difference between lowest versus highest income groups can be translated into 0.4 kg.

Additional analyses testing the robustness of the results

Additional analyses using SGA, appropriate and large for gestational age as the body size measures at birth showed the same tendencies as the analyses with birth weight for gestational age and BMI presented in the paper. Excluding mothers who were students or self-employed did not change the results.

Table 2 Parental and child characteristics in relation to parental educational level and household income, the DNBC 1996–2010, n=85 062

Characteristics	Total mean or per cent	Maternal educational level (%)			Paternal educational level (%)			Household income (%)				
		<10 years	10–12 years	>12 years	<10 years	10–12 years	>12 years	<20	20–<40	40–<60	60–<80	80–100
Total n		10 957	41 667	32 438	13 827	44 082	27 153	16 110	17 129	17 126	17 335	17 362
Maternal mean age	29.2	27.2	28.7	30.6	28.0	28.8	30.5	28.4	29.0	29.1	29.2	30.4
(Range)	(15–46)	(15–46)	(17–45)	(21–46)	(15–45)	(15–46)	(18–45)	(15–46)	(16–46)	(17–45)	(18–46)	(18–46)
Paternal mean age	32.2	30.7	31.8	33.3	31.4	31.7	33.5	31.6	32.0	32.0	32.1	33.5
(Range)	(16–71)	(16–66)	(17–71)	(20–68)	(16–66)	(19–66)	(22–71)	(16–66)	(17–67)	(19–63)	(20–64)	(20–71)
Parity, 0	43.3	39.6	44.7	42.6	42.6	44.2	42.0	30.4	6.1	38.6	55.1	64.9
1	50.9	53.1	50.0	51.6	50.8	50.2	52.1	62.3	68.0	56.8	39.7	29.0
Missing	5.8	7.3	5.5	5.6	6.6	5.6	5.9	7.3	5.9	4.7	5.3	6.1
Maternal mean BMI	23.6	24.3	23.8	23.0	24.5	23.8	22.8	23.8	24.0	23.9	23.5	22.8
(Range)	(13.9–57.8)	(13.9–57.8)	(14.2–52.5)	(13.9–55.5)	(13.9–55.5)	(13.9–57.8)	(13.9–54.0)	(13.9–57.8)	(14.2–55.5)	(14.9–50.8)	(13.9–48.8)	(14.9–50.2)
Paternal mean BMI	25.2	25.6	25.3	24.8	25.7	25.3	24.7	25.3	25.3	25.2	25.1	24.9
(Range)	(14.9–57.9)	(15.4–53.8)	(14.9–57.8)	(15.6–57.9)	(15.1–47.9)	(14.9–57.9)	(16.2–55.9)	(15.4–55.6)	(15.1–57.8)	(14.9–55.9)	(16.2–57.9)	(15.6–54.1)
Single household at 18 months	2.1	4.8	2.1	1.3	4.4	2.1	1.1	4.4	2.2	1.8	1.4	1.0
Birth year												
1997	0.6	0.7	0.6	0.5	0.7	0.6	0.5	1.2	1.1	0.0	0.5	0.3
1998	12.5	13.4	12.6	12.1	12.8	12.5	12.4	15.1	14.4	12.5	10.9	9.8
1999	20.8	21.4	21.2	20.1	21.2	20.8	20.6	22.8	23.4	21.9	19.2	17.0
2000	22.3	22.5	22.6	21.9	23.1	22.3	22.0	22.1	22.1	22.5	23.5	21.5
2001	20.8	20.8	20.9	20.7	20.7	21.2	20.2	20.0	20.2	21.0	21.1	21.7
2002	18.7	17.9	18.0	19.9	17.7	18.5	19.6	16.0	15.9	18.3	19.8	23.4
2003	4.2	3.4	4.1	4.8	3.9	4.1	4.7	2.8	3.0	3.8	5.0	6.5

BMI, body mass index; DNBC, Danish National Birth Cohort.

Table 3 Random-effects linear regression analysis of the association between parental socioeconomic position and birthweight z-score and BMI z-scores from birth to age 7 years by gender, the DNBC 1996–2010, n=85 062

Socioeconomic characteristics	Boys birth	Boys 5 months	Boys 12 months	Boys 7 years	Girls birth	Girls 5 months	Girls 12 months	Girls 7 years
Maternal education								
<10 years	0.00 (ref)	0.071 (0.007 to 0.135)	0.043 (−0.021 to 0.108)	0.201 (0.125 to 0.266)	0.00 (ref)	0.060 (−0.006 to 0.126)	0.027 (−0.039 to 0.093)	0.193 (0.126 to 0.260)
10–12 years	0.00 (ref)	−0.021 (−0.049 to 0.006)	−0.009 (−0.037 to 0.018)	0.011 (−0.017 to 0.038)	0.00 (ref)	−0.001 (−0.029 to 0.026)	−0.009 (−0.037 to 0.019)	0.024 (−0.005 to 0.052)
>12 years/ref	0.00 (ref)	−0.072 (−0.102 to −0.043)	−0.085 (−0.114 to −0.055)	−0.139 (−0.169 to −0.110)	0.00 (ref)	−0.103 (−0.133 to −0.073)	−0.098 (−0.127 to −0.068)	−0.151 (−0.181 to −0.121)
<i>p</i> <0.0001*					<i>p</i> <0.0001*			
Paternal education								
<10 years	0.00 (ref)	0.075 (0.024 to 0.127)	0.072 (0.020 to 0.124)	0.183 (0.131 to 0.236)	0.00 (ref)	0.044 (−0.008 to 0.097)	0.029 (−0.023 to 0.082)	0.155 (0.102 to 0.208)
10–12 years	0.00 (ref.)	−0.031 (−0.057 to −0.004)	−0.030 (−0.057 to −0.003)	0.005 (−0.022 to 0.032)	0.00 (ref.)	−0.044 (−0.071 to −0.017)	−0.034 (−0.061 to −0.007)	−0.002 (−0.029 to 0.025)
>12 years/ref	0.00 (ref)	−0.085 (−0.118 to −0.053)	−0.090 (−0.123 to −0.057)	−0.187 (−0.220 to −0.153)	0.00 (ref)	−0.067 (−0.100 to −0.034)	−0.089 (−0.123 to −0.056)	−0.168 (−0.202 to −0.134)
<i>p</i> <0.0001*					<i>p</i> <0.0001*			
Household income quintiles								
<20	0.00 (ref)	−0.044 (−0.094 to 0.005)	−0.075 (−0.124 to −0.026)	−0.022 (−0.072 to 0.028)	0.00 (ref)	−0.077 (−0.126 to 0.028)	−0.085 (−0.135 to −0.036)	−0.034 (−0.083 to 0.016)
20 to <40	0.00 (ref)	−0.095 (−0.138 to −0.053)	−0.112 (−0.155 to −0.069)	−0.050 (−0.093 to −0.006)	0.00 (ref)	−0.137 (−0.180 to −0.093)	−0.125 (−0.169 to −0.082)	−0.044 (−0.088 to 0.000)
40 to <60	0.00 (ref)	−0.058 (−0.010 to −0.017)	−0.038 (−0.080 to 0.003)	−0.040 (−0.082 to 0.003)	0.00 (ref)	−0.043 (−0.085 to −0.001)	−0.045 (−0.087 to −0.003)	−0.042 (−0.084 to 0.001)
60 to <80	0.00 (ref)	−0.023 (−0.018 to 0.064)	0.009 (−0.033 to 0.050)	0.007 (−0.035 to 0.050)	0.00 (ref)	−0.020 (−0.062 to 0.022)	−0.036 (−0.078 to 0.006)	−0.056 (−0.099 to −0.014)
>80/ref	0.00 (ref)	−0.006 (−0.047 to 0.035)	0.018 (−0.024 to 0.059)	−0.073 (−0.115 to −0.031)	0.00 (ref)	0.064 (0.022 to 0.106)	0.058 (0.016 to 0.010)	−0.007 (−0.050 to 0.035)
<i>p</i> ≤0.0001*					<i>p</i> <0.0001*			

Estimates represent change in anthropometry z-score (and 95% CIs) from birth.

*Overall interaction, SEP and BMI z-score which equals a test for differences in tracking of BMI between SEP groups.

BMI, body mass index; DNBC, Danish National Birth Cohort; SEP, socioeconomic position.

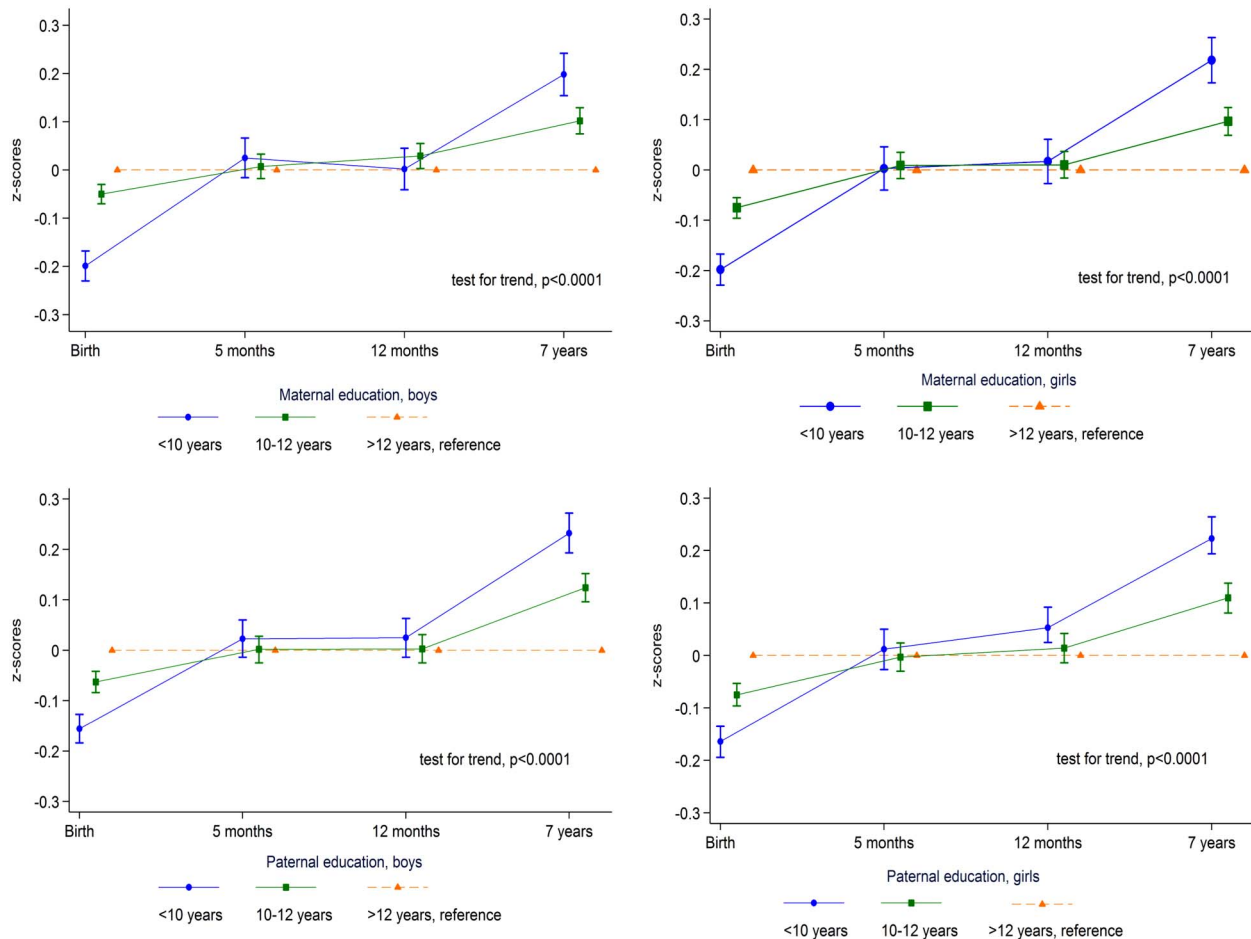


Figure 2 Random-effects linear regression analysis of the association between birthweight z-scores and BMI z-scores at age 5, 12 months and 7 years by maternal and paternal educational level at birth, the DNBC 1996–2010, n=85 062. The estimates represent birth weight for gestational age z-scores and BMI z-scores with 95% CIs. BMI, body mass index; DNBC, Danish National Birth Cohort.

By cross-tabulations and χ^2 tests, we found that a high educational level was associated with high-income level and low educational level with a lower income level (see online supplementary table S2a and S2b).

DISCUSSION

This study showed that the change in body size from birth through age 7 years was socially patterned. A low educational level was associated with an increase in birth weight for gestational age z-score to BMI at age 7 years, whereas a high educational level was associated with a decrease in z-score in this period for both genders. Children with parents with a relatively low educational level were born with lower gestational age-specific birthweight z-scores and had higher BMI z-scores at age 7 years. For household income, the picture was different since a relatively low household income level was associated with higher birthweight z-scores and with higher BMI z-scores at age 7 years. We found that the socioeconomic gradient in BMI was not present during infancy for either education or income, indicating that the gradient disappears during the first few months of

life and is established again after infancy, for parental educational level in inverse direction, and for income in the same direction as at birth.

Socioeconomic disparities are observed in high-income countries showing that lower socioeconomic position is associated with slightly more SGA births²⁷ and higher overweight prevalence levels among children and adolescents.^{10 13 14} Children born with a high birth weight may represent a mixture of aetiologies: some children are high-risk children (eg, offspring of diabetic mothers) while others are low-risk children born with high birth weight for genetic and other non-detrimental reasons.⁹ This pattern may have changed with the obesity epidemic, whereby a larger proportion of children with high birth weight are born from overweight and obese mothers, and given the social patterning of adult obesity, the social patterning of birth weight may be in a period of change.

Education is an exposure, which may be viewed as a lifelong exposure and as a major route through which knowledge and privileges are passed from one generation to the other, and operates throughout the life course of the offspring.²⁸ The educational level of the

**Table 4** Random-effects linear regression analysis of the association between birthweight z-scores and BMI z-scores at age 5, 12 months and 7 years by household income group at birth, the DNBC 1996–2010, n=85 062

†Socioeconomic characteristics	Boys birth	Boys 5 months	Boys 12 months	Boys 7 years	Girls birth	Girls 5 months	Girls 12 months	Girls 7 years
Household income quintiles								
<20	0.085 (0.055 to 0.115)	0.059 (0.019 to 0.098)	0.019 (-0.022 to 0.059)	0.160 (0.119 to 0.201)	0.086 (0.056 to 0.117)	0.014 (-0.026 to 0.054)	0.001 (-0.034 to 0.048)	0.126 (0.083 to 0.168)
20 to <40	0.123 (0.094 to 0.153)	0.067 (0.030 to 0.104)	0.036 (-0.003 to 0.074)	0.159 (0.119 to 0.198)	0.134 (0.103 to 0.164)	0.001 (-0.037 to 0.039)	0.009 (-0.030 to 0.048)	0.154 (0.114 to 0.195)
40 to <60	0.091 (0.062 to 0.121)	0.045 (0.008 to 0.082)	0.014 (-0.024 to 0.052)	0.103 (0.064 to 0.141)	0.074 (0.044 to 0.104)	0.040 (0.002 to 0.078)	0.025 (-0.014 to 0.063)	0.096 (0.056 to 0.136)
60 to <80	0.045 (0.016 to 0.075)	0.031 (-0.006 to 0.068)	-0.009 (-0.047 to 0.029)	0.085 (0.047 to 0.124)	0.048 (0.018 to 0.078)	0.011 (-0.026 to 0.049)	-0.013 (-0.052 to 0.026)	0.043 (0.003 to 0.083)
>80/ref	0.00	0.00	0.00	0.00	0.00	0.00	0.00	0.00
Test for trend*	p<0.0001	p=0.004	p=0.19	p<0.0001	p<0.0001	p=0.23	p=0.44	p<0.0001

*Test for trend across household income categories.

The estimates represent birth weight for gestational age z-scores, BMI z-scores and 95% CIs.

BMI, body mass index; DNBC, Danish National Birth Cohort.

parents is assumed to reflect the intellectual resources of the family of origin, and hence the possible impact on health at an early age. Parental educational level is therefore considered suitable for measuring children's socioeconomic position already in early childhood. How parental education may operate and influence child body size during gestation and early childhood is an open question. The educational gradient in birth weight at term has been found to be partly explained by smoking and maternal pre-pregnancy BMI.²⁹ A high parental educational level may lower the risk of overweight and affect BMI in children by a better incorporation of health education messages into the daily living and, consequently, healthier behavioural patterns; better skills to communicate with healthcare personnel; and a better access to healthcare services. Parental educational level may further affect the cognitive development of the child and thereby subsequent lifestyles.³⁰

Household income is assumed to be a marker of material aspects of socioeconomic position. As for parental education, it is not clear how it may influence child body size. Income may affect birth weight and BMI in childhood through the conversion of money and assets to health-enhancing commodities and services.³¹ This could, for instance, be characterised by the possibility to choose to buy foods with low energy density and food with a greater diversity, which influences the food preferences and creates the basis for healthy food choices in childhood thereby passing habits from one generation to the next.^{32–35}

Previous studies examining the social gradient in a longitudinal design with baseline at birth have shown mixed results regarding the timing of emergence of the socioeconomic gradient.^{15–20} Howe *et al* studied the socioeconomic patterning, measured by maternal education, in ponderal index and BMI trajectories within the Avon Longitudinal Study of Parents and Children (ALSPAC) with data from South-West England. They found no socioeconomic patterning in trajectories from age 0 to 2 years, but found that socioeconomic differences in BMI trajectories emerged at age 4 and widened between ages 4 and 10 years.¹⁵ These results correspond to the present study showing that the gradient emerges after infancy and in early childhood.

Dubois and Girard¹⁶ found no educational gradient in BMI at age 4.5 years, but they found increased odds of being at the 95th BMI centile or higher for children from the poorest families. Langnase *et al* concluded that the inverse socioeconomic gradient in BMI emerged between 2 and 6 years. Wijlaars *et al*²⁰ found no educational or occupational differences in birth weight, but an inverse socioeconomic gradient in weight already at age 3 months in twins. On the basis of the UK 1958 cohort, Power *et al*¹⁸ found an inverse socioeconomic gradient in obesity from age 16 years onwards, but not at younger ages. Our results are in line with those of Dubois and Langnase *et al*,¹⁷ but in contrast to those of Wijlaars *et al*,²⁰ which may be due to the different

outcome measure and differences in associations between singletons and twins. The differences between our results and the results from the UK 1958 cohort¹⁸ are possibly due to changes in the socioeconomic effects over time.

The finding of an inverse relation between household income and gestational age-specific birth weight was unexpected, since a previous Danish–Finnish study has shown a small but positive income-related inequality in SGA.²⁷ To examine if many in the low-income group were students, we made analyses excluding this group. Additionally, we looked at the distribution of income by educational group. None of these factors could explain our findings. Our study may be a new development, but has to be tested in other populations before any conclusion is drawn.

Results from the previous studies addressing the question of whether there are socioeconomic differences in the ‘tracking’ of overweight across childhood indicate that children (age 7–10) from less advantaged socioeconomic backgrounds have an increased risk of overweight in adolescence.^{15 36} Our study adds to this literature by being based on a large sample size and by focusing on the tracking of body size z-scores from birth into childhood.

Overall, the differences between previous studies and the results from this study, at least in part, are likely to reflect that the risk factors for growth and increasing BMI, such as breast feeding, smoking during pregnancy and financial constraints on nutrition and physical activity, have different social distributions in different settings.³⁷ The inverse socioeconomic gradient in childhood BMI and overweight is now present at earlier ages^{15 38} and focusing on recent increased disparities during pregnancy, early life and early childhood may shed light on some of the mechanisms behind the development of overweight among younger children in the modern world. The next step from the analyses in the present paper will be to examine why we see these differences in the pathways between education and income on infant and child BMI. A recent systematic review highlights a significant gap in our mechanistic understanding of parent and child behaviours in relation to obesity among socioeconomically disadvantaged groups.³⁹

STRENGTHS AND LIMITATIONS

A strength of this study is its large sample size, and the availability of repeated measures of body size and multiple indicators of socioeconomic position. A possible limitation is the selection for participation in the cohort in general and for follow-up, which could introduce bias. Women of disadvantaged socioeconomic position are under-represented in the DNBC compared with the background population.⁴⁰ The women participating in the 7-year follow-up have been found to be slightly

older, less likely to be overweight before pregnancy and less likely to smoke during pregnancy than those lost to follow-up.⁴¹ Also, there was a slightly lower percentage of overweight children at age 7 years in the cohort than in the general Danish population.⁴² The socioeconomic measures and birthweight measure have the advantage of being collected from the registers, so that neither of the measures relies on self-reports. The measures of length and weight at 5 months of age have the advantage of being measured routinely by the GP, but all measurements are individual measurements and may be subject to measurement error. However, the possible misclassification is most likely non-differential. The parents reported height and weight at age 7 years and self-reporting often leads to an under-reporting of BMI.^{43 44} A possible underestimation might have been socially skewed.⁴⁵ If the socioeconomically disadvantaged parents tended to under-report children’s BMI more than the socioeconomically advantaged ones, this would have affected the socioeconomic associations with child BMI at age 7 years towards the null. The reported measurements at age 7 years have been compared with measures of height and weight in a subsample of 1122 children measured by a school doctor. This validation showed that the percentage of children categorised as overweight was slightly lower in the DNBC compared with the school doctors’ measurements. However, the validation showed no trend towards increasing differences of weight or height with increasing averages of weight or height between the measurements from school doctors and from the DNBC, most likely reflecting that the disagreements are random errors.⁴⁶

Previous studies have addressed the relatively low participation rate and the loss to follow-up in the DNBC.^{40 41 47} Different associations were examined and the authors concluded that the internal comparisons were robust to the lack of representativeness, and that the bias due to loss to follow-up was small.^{41 47} Howe *et al*⁴⁸ have examined how loss to follow-up in cohort studies often resulted in underestimation of the socioeconomic inequalities, but they found that the direction and the approximate magnitude of the examined associations were valid. Loss to follow-up and self-reported BMI at age 7 years may have affected the 7-year estimates towards the null, but we have no reason to believe that the answer to the main research question in our study—regarding the change of the socioeconomic gradient in child body size—should be biased due to these weaknesses.

Our study was based on one assessment of socioeconomic position before delivery, which allowed us to keep a temporal sequence between exposure and outcomes at birth and in infancy. However, socioeconomic position may change over time, and future studies may address the influence of possible changes in various aspects of parental socioeconomic indicators on BMI later in childhood.

CONCLUSIONS

In this study, we found that children from families with a lower educational level increased their body size z-score from birth to age 7 years, whereas children from families with a higher educational level decreased the z-scores in this 7-year period. We found an association between a lower maternal and paternal educational attainment and lower birth weight for gestational age z-scores and higher BMI z-scores at age 7 years. We found an unexpected association between a lower household income level and higher birth weight for gestational age z-scores, but an expected association with higher 7-year BMI z-scores. We found no educational gradient or household income gradient in infancy. The results indicate that the socioeconomic gradient in body size z-scores disappears during the first months of life and then it develops for parental education in inverse direction and for household income in the same direction after infancy.

Author affiliations

¹Department of Clinical Epidemiology (formerly Institute of Preventive Medicine), Copenhagen, Denmark

²Section of Social Medicine, Department of Public Health, University of Copenhagen, Copenhagen, Denmark

³Section of Biostatistics, Department of Public Health, University of Copenhagen, Copenhagen, Denmark

⁴MRC Integrative Epidemiology Unit, The University of Bristol, and School of Social and Community Medicine, University of Bristol, Bristol, UK

⁵National Institute of Public Health, University of Southern Denmark, Copenhagen, Denmark

⁶Faculty of Health and Medical Sciences, Novo Nordisk Foundation Center for Basic Metabolic Research and Department of Public Health, University of Copenhagen, Copenhagen, Denmark

Contributors CSM and A-MNA conceived the study. PKA, LDH, LHM and CSM planned the analyses; CSM prepared the data set for analysis and conducted the data analyses by supervision of PKA. CSM, A-MNA, PKA, TIAS, LHM, LDH, MR and PD interpreted the results; CSM prepared the manuscript; A-MNA, PKA, TIAS, LHM, LDH, MR and PD critically revised the manuscript; and TIAS and A-MNA participated in the planning and building of the DNBC. CSM have the responsibility for the final content. All authors read and approved the final manuscript.

Funding The work is supported by the research programme 'Governing Obesity' funded by the University of Copenhagen Excellence Programme for Interdisciplinary Research (<http://www.go.ku.dk>). This work has further been supported by the University of Copenhagen, Danish Graduate School of Health and Medical Sciences, and by a donation from the Health Foundation (2008B121). LDH is supported by a UK Medical Research Council Population Health Scientist Fellowship (G1002375). The Danish National Research Foundation has established the Danish Epidemiology Science Centre that initiated and created the Danish National Birth Cohort (DNBC). The cohort is furthermore a result of a major grant from this Foundation. Additional support for the DNBC is obtained from the Pharmacy Foundation, the Egmont Foundation, the March of Dimes Birth Defects Foundation, the Augustinus Foundation and the Health Foundation. The DNBC 7-year follow-up is supported by the Lundbeck Foundation (195/04) and the Danish Medical Research Council (SSVF 0646).

Competing interests None declared.

Patient consent Obtained.

Ethics approval The Danish National Committee on Biomedical Research Ethics approved the collection of data.

Provenance and peer review Not commissioned; externally peer reviewed.

Data sharing statement Data are available by application from the DNBC. <http://www.ssi.dk/Forskning/Forskningsomraader/Epidemiologi/BSMB/onsker%20du%20at%20forske/Hvordan%20soge%20om%20data.aspx>. Additional data are available by application to the DNBC.

Additional data are available by application to the DNBC.

Open Access This is an Open Access article distributed in accordance with the Creative Commons Attribution Non Commercial (CC BY-NC 4.0) license, which permits others to distribute, remix, adapt, build upon this work non-commercially, and license their derivative works on different terms, provided the original work is properly cited and the use is non-commercial. See: <http://creativecommons.org/licenses/by-nc/4.0/>

REFERENCES

1. Due P, Heitmann BL, Sørensen TIA. Prevalence of obesity in Denmark. *Obes Rev* 2007;8:187–9.
2. Lissau I, Overpeck MD, Ruan WJ, *et al*. Body mass index and overweight in adolescents in 13 European countries, Israel, and the United States. *Arch Pediatr Adolesc Med* 2004;158:27–33.
3. Lobstein T, Baur L, Uauy R. Obesity in children and young people: a crisis in public health. *Obes Rev* 2004;5(Suppl 1):4–104.
4. Ogden CL, Carroll MD, Lawman HG, *et al*. Trends in obesity prevalence among children and adolescents in the United States, 1988–1994 through 2013–2014. *JAMA* 2016;315:2292–9.
5. Morgen CS, Rokholm B, Brixval CS, *et al*. Trends in prevalence of overweight and obesity in Danish infants, children and adolescents —are we still on a plateau? *PLoS ONE* 2013;8:e69860.
6. Rokholm B, Baker JL, Sørensen TIA. The levelling off of the obesity epidemic since the year 1999—a review of evidence and perspectives. *Obes Rev* 2010;11:835–46.
7. Whitaker RC, Wright JA, Pepe MS, *et al*. Predicting obesity in young adulthood from childhood and parental obesity. *N Engl J Med* 1997;337:869–73.
8. Reilly JJ, Kelly J. Long-term impact of overweight and obesity in childhood and adolescence on morbidity and premature mortality in adulthood: systematic review. *Int J Obesity* 2011;35:891–8.
9. Mortensen LH, Nybo AM. Social inequality in birth weight. A Nordic comparative and collaborative study of the development 1980–2005. *Eur J Epidemiol* 2006;21:146.
10. Due P, Damsgaard MT, Rasmussen M, *et al*. Socioeconomic position, macroeconomic environment and overweight among adolescents in 35 countries. *Int J Obesity* 2009;33:1084–93.
11. Knai C, Lobstein T, Darmon N, *et al*. Socioeconomic patterning of childhood overweight status in Europe. *Int J Environ Res Public Health* 2012;9:1472–89.
12. Sobal J, Stunkard AJ. Socioeconomic-status and obesity: a review of the literature. *Psychol Bull* 1989;105:260–75.
13. Shrewsbury V, Wardle J. Socioeconomic status and adiposity in childhood: a systematic review of cross-sectional studies 1990–2005. *Obesity* 2008;16:275–84.
14. Barriuso L, Miquelz E, Albaladejo R, *et al*. Socioeconomic position and childhood-adolescent weight status in rich countries: a systematic review, 1990–2013. *BMC Pediatr* 2015;15:129.
15. Howe LD, Tilling K, Galobardes B, *et al*. Socioeconomic disparities in trajectories of adiposity across childhood. *Int J Pediatr Obesity* 2011;6:E144–53.
16. Dubois L, Girard M. Early determinants of overweight at 4.5 years in a population-based longitudinal study. *Int J Obesity* 2006;30:610–17.
17. Langnase K, Mast M, Danielzik S, *et al*. Socioeconomic gradients in body weight of German children reverse direction between the ages of 2 and 6 years. *J Nutr* 2003;133:789–96.
18. Power C, Manor O, Matthews S. Child to adult socioeconomic conditions and obesity in a national cohort. *Int J Obesity* 2003;27:1081–6.
19. Strauss RS, Knight J. Influence of the home environment on the development of obesity in children. *Pediatrics* 1999;103:6–14.
20. Wijlaars LPMM, Johnson L, van Jaarsveld CHM, *et al*. Socioeconomic status and weight gain in early infancy. *Int J Obesity* 2011;35:963–70.
21. Olsen J, Melbye M, Olsen SF, *et al*. The Danish National Birth Cohort—its background, structure and aim. *Scand J Public Health* 2001;29:300–7.
22. Knudsen LB, Olsen J. The Danish Medical Birth Registry. *Dan Med Bull* 1998;45:320–3.
23. Cole TJ, Bellizzi MC, Flegal KM, *et al*. Establishing a standard definition for child overweight and obesity worldwide: international survey. *BMJ* 2000;320:1240–3.
24. Jensen VM, Rasmussen AW. Danish education registers. *Scand J Public Health* 2011;39(7 Suppl):91–4.
25. OECD modified scale. <http://www.oecd.org/eco/growth/OECD-Note-EquivalenceScales.pdf> 011 (accessed Dec 2015).

26. Diggle PJ, Heagerty PJ, Liang KY, *et al.* *Analysis of longitudinal data*. New York: Oxford University Press, 2002:54–113.
27. Mortensen LH, Lauridsen JT, Diderichsen F, *et al.* Income-related and educational inequality in small-for-gestational age and preterm birth in Denmark and Finland 1987–2003. *Scand J Public Health* 2010;38:40–5.
28. Due P, Krolner R, Rasmussen M, *et al.* Pathways and mechanisms in adolescence contribute to adult health inequalities. *Scand J Public Health* 2011;39:62–78.
29. Mortensen LH, Nybo AM. The social gradient in birthweight at term: quantification of the mediating role of maternal smoking and body mass index. *Hum Reprod* 2009;10:2629–35.
30. Power C, Kuh D, Morton S. From developmental origins of adult disease to life course research on adult disease and aging: insights from birth cohort studies. *Annu Rev Public Health* 2013;34:7–28.
31. Galobardes B, Shaw M, Lawlor DA, *et al.* Indicators of socioeconomic position (part 2). *J Epidemiol Community Health* 2006;60:95–101.
32. Drewnowski A. Obesity and the food environment: dietary energy density and diet costs. *Am J Prev Med* 2004;27:154–62.
33. Drewnowski A, Darmon N, Briand A. Replacing fats and sweets with vegetables and fruits—a question of cost. *Am J Public Health* 2004;94:1555–9.
34. Galobardes B, Shaw M, Lawlor DA, *et al.* Indicators of socioeconomic position (part 1). *J Epidemiol Community Health* 2006;60:7–12.
35. Kuh D, Power C, Blane D, *et al.* Social pathways between childhood and adult health. In: Kuh D, Ben-Shlomo A, eds. *A life course approach to chronic disease*. Oxford: Oxford University Press, 2013:169–78.
36. Kristensen PL, Wedderkopp N, Møller NC, *et al.* Tracking and prevalence of cardiovascular disease risk factors across socio-economic classes: a longitudinal substudy of the European Youth Heart Study. *BMC Public Health* 2006;6:20–9.
37. Monasta L, Batty GD, Cattaneo A, *et al.* Early-life determinants of overweight and obesity: a review of systematic reviews. *Obes Rev* 2010;11:695–708.
38. Pinot de MA, Power C, Li L. Changing influences on childhood obesity: a study of 2 generations of the 1958 British birth cohort. *Am J Epidemiol* 2010;171:1289–98.
39. Russel CG, Taki S, Laws R, *et al.* Effects of parent and child behaviours on overweight and obesity in infants and young children from disadvantaged backgrounds: systematic review with narrative synthesis. *BMC Public Health* 2016;16:151.
40. Jacobsen TN, Nøhr EA, Frydenberg M. Selection by socioeconomic factors into the Danish National Birth Cohort. *Eur J Epidemiol* 2010;25:349–55.
41. Greene N, Greenland S, Olsen J, *et al.* Estimating bias from loss to follow-up in the Danish National Birth Cohort. *Epidemiology* 2011;22:815–22.
42. Pearson S, Hansen B, Sørensen TI, *et al.* Overweight and obesity trends in Copenhagen schoolchildren from 2002 to 2007. *Acta Paediatr* 2010;99:1675–8.
43. Elgar FJ, Roberts C, Tudor-Smith C, *et al.* Validity of self-reported height and weight and predictors of bias in adolescents. *J Adolesc Health* 2005;37:371–5.
44. Goodman E, Hinden BR, Khandelwal S. Accuracy of teen and parental reports of obesity and body mass index. *Pediatrics* 2000;106:52–8.
45. Himes JH, Hannan P, Wall M, *et al.* Factors associated with errors in self-reports of stature, weight, and body mass index in Minnesota adolescents. *Ann Epidemiol* 2005;15:272–8.
46. Andersen CS. Validation of the height, weight and waist circumference in the 7-year follow-up in the Danish National Birth Cohort. <http://www.ssi.dk/English/RandD/Research%20areas/Epidemiology/DNBC/Publications%20on%20Background%20and%20Methods/Validation%20of%20height%20weight%20and%20waist%20circumference.aspx> (accessed 18 Dec 2015).
47. Nøhr EA, Frydenberg M, Henriksen TB, *et al.* Does low participation in cohort studies induce bias? *Epidemiology* 2006;17:413–18.
48. Howe LD, Tilling K, Galobardes B, *et al.* Loss to follow-up in cohort studies bias in estimates of socioeconomic inequalities. *Epidemiology* 2013;24:1–9.

BMJ Open

Socioeconomic disparities in birth weight and body mass index during infancy through age 7 years: a study within the Danish National Birth Cohort

Camilla Schmidt Morgen, Per Kragh Andersen, Laust Hvas Mortensen, Laura D Howe, Mette Rasmussen, Pernille Due, Thorkild I A Sørensen and Anne-Marie Nybo Andersen

BMJ Open 2017 7:
doi: 10.1136/bmjopen-2016-011781

Updated information and services can be found at:
<http://bmjopen.bmj.com/content/7/1/e011781>

These include:

References

This article cites 44 articles, 6 of which you can access for free at:
<http://bmjopen.bmj.com/content/7/1/e011781#BIBL>

Open Access

This is an Open Access article distributed in accordance with the Creative Commons Attribution Non Commercial (CC BY-NC 4.0) license, which permits others to distribute, remix, adapt, build upon this work non-commercially, and license their derivative works on different terms, provided the original work is properly cited and the use is non-commercial. See: <http://creativecommons.org/licenses/by-nc/4.0/>

Email alerting service

Receive free email alerts when new articles cite this article. Sign up in the box at the top right corner of the online article.

Topic Collections

Articles on similar topics can be found in the following collections

[Epidemiology](#) (2129)

[Paediatrics](#) (636)

[Public health](#) (2239)

Notes

To request permissions go to:
<http://group.bmj.com/group/rights-licensing/permissions>

To order reprints go to:
<http://journals.bmj.com/cgi/reprintform>

To subscribe to BMJ go to:
<http://group.bmj.com/subscribe/>