

Manuscript prepared for J. Name

with version 2014/09/16 7.15 Copernicus papers of the L^AT_EX class copernicus.cls.

Date: 29 April 2017

Volatile organic compounds (VOCs) in photochemically aged air from the Eastern and Western Mediterranean

Bettina Derstroff¹, Imke Hüser¹, Efstratios Bourtsoukidis¹, John N. Crowley¹, Horst Fischer¹, Sergey Gromov¹, Hartwig Harder¹, Ruud H. H. Janssen^{1,2}, Jürgen Kesselmeier³, Jos Lelieveld^{1,4}, Chinmay Mallik¹, Monica Martinez¹, Anna Novelli^{1,5}, Uwe Parchatka¹, Gavin J. Phillips^{1,6}, Rolf Sander¹, Carina Sauvage¹, Jan Schuladen¹, Christof Stöner¹, Laura Tomsche¹, and Jonathan Williams^{1,4}

¹Department of Atmospheric Chemistry, Max Planck Institute for Chemistry, Mainz, Germany

²Department of Civil and Environmental Engineering, Massachusetts Institute of Technology, Cambridge, Massachusetts, USA

³Department of Biogeochemistry, Max Planck Institute for Chemistry, Mainz, Germany

⁴Energy, Environment and Water Research Center, Cyprus Institute, Nicosia, Cyprus

⁵Institut für Energie- und Klimaforschung IEK-8: Troposphäre, Forschungszentrum Jülich GmbH, Jülich, Germany

⁶Department of Natural Sciences, University of Chester, Chester, United Kingdom

Correspondence to: Bettina Derstroff (bettina.derstroff@mpic.de), Jonathan Williams (jonathan.williams@mpic.de)

Abstract. During the summertime CYPHEX campaign (CYprus PHotochemical EXperiment 2014) in the Eastern Mediterranean, multiple volatile organic compounds (VOCs) were measured from a 650 m hilltop site in western Cyprus (34° 57' N / 32° 23' E). Periodic shifts in the northerly Etesian winds resulted in the site being alternately impacted by photochemically processed emissions from Western (Spain, France, Italy) and Eastern (Turkey, Greece) Europe. Furthermore, the site was situated within the residual layer/free troposphere during specific nights, which were characterized by high ozone and low relative humidity levels. In this study we examine the temporal variation of VOCs at the site. The sparse Mediterranean scrub vegetation generated diel cycles in the reactive biogenic hydrocarbon isoprene, from very low values at night to 80–100 pptv (1 pptv = 1×10^{-12} mol mol⁻¹) by day on average. In contrast, the oxygenated volatile organic compounds (OVOCs) methanol and acetone exhibited weak diel cycles and were approximately an order of magnitude higher in mixing ratio (ca. 2.5–3 ppbv by day on average, range: ca. 1–8 ppbv, 1 ppbv = 1×10^{-9} mol mol⁻¹) than the locally emitted isoprene and aromatic compounds such as benzene (ca. 35 pptv by day on average, up to 130 pptv) and toluene (ca. 15 pptv by day on average, up to 100 pptv). Acetic acid was present at mixing ratios between 0.05 and 4 ppbv with ca. 1.2 ppbv during daytime on average. When data points directly affected by the residual layer/free troposphere were excluded, the acid followed a pronounced diel cycle, which was influenced by various local effects including photochemical production and loss, direct emission, dry deposition and scavenging from advecting air in fog banks.

The Lagrangian model FLEXPART was used to determine transport patterns and photochemical processing times (between 12 hours and several days) of air masses originating from Eastern and Western Europe. Eastern and Western European flow regimes showed distinct trace gas concentrations, with ca. 20 % higher ozone and ca. 30-60 % higher values for many OVOCs observed from the East. Using the FLEXPART calculated transport time, the contribution of photochemical processing, sea surface contact and dilution was estimated. Methanol and acetone decreased with residence time in the marine boundary layer (MBL) with loss rate constants of $0.031 \pm 0.004 \text{ h}^{-1}$ and $0.022 \pm 0.003 \text{ h}^{-1}$ from Eastern Europe and $0.029 \pm 0.005 \text{ h}^{-1}$ and $0.014 \pm 0.003 \text{ h}^{-1}$ from Western Europe, respectively. A theoretical calculation of the loss rate constants using the dry deposition velocities from the EMAC model revealed, that the calculated results underestimate the measured values. The missing sink in the calculation is most probably an oceanic uptake enhanced by microbial consumption of methanol and acetone, although the temporal and spatial variability in the source strength on the continents might play a role as well. Correlations between acetone and methanol were weaker in western air masses ($r^2 = 0.68$), but were stronger in air masses measured after the shorter transport time from the East ($r^2 = 0.73$).

Keywords: volatile organic compounds, Mediterranean, long distance transport, marine boundary layer, methanol, acetone, acetic acid, isoprene, monoterpenes

1 Introduction

The island of Cyprus is situated on the southeastern edge of the European Union. During the summer months, the east-west pressure gradient between the quasi-permanent South Asian monsoon low, the Persian trough and the Azores high induces northerly winds (Etesians), that overcome the westerly flow that is typical at temperate latitudes. The varying influences from the westerly and northerly winds make Cyprus an ideal vantage point to examine photochemically processed air from Eastern and Western Europe. Despite a modest population (1.15 million in 2014 ¹) and little industrial emissions, the EU ozone air quality standard is regularly exceeded (Kourtidis et al., 2002; Kouvarakis et al., 2002; Gerasopoulos et al., 2005; Kalabokas et al., 2007, 2008, 2013; Doche et al., 2014; Kleanthous et al., 2014). The excess ozone is formed in sunlit conditions when volatile organic compounds (VOC), emitted from countries to the north and west of Cyprus, are oxidized in the gas phase by the atmosphere's primary oxidant, the OH radical in the presence of NO_x (NO + NO₂) (Atkinson, 1990). In addition to ozone, numerous other secondary oxidants are formed including a suite of oxidized volatile organic compounds (OVOCs) such as alcohols (e.g. methanol), carbonyls (e.g. acetone), and organic acids (e.g. acetic acid). In this study we exploit the location and dual meteorological flow regime to investigate the abundance, temporal behavior, dependence on origin

¹<http://data.worldbank.org/country/cyprus>; accessed on 22 April 2017

and the marine and tropospheric influence on VOCs. Several extensive studies of VOCs have been conducted previously in the Mediterranean area which have highlighted the relevance of anthropogenic, biogenic and biomass burning sources for regional chemistry. Airborne measurements have shown that the Mediterranean atmosphere is a cross roads for global pollution, with boundary layer chemistry driven by emissions from the European mainland, whereas the mid-troposphere (4–8 km) is influenced by North American emissions and above this, monsoon outflow from Asia (Lelieveld et al., 2002). Measurements made on Crete approximately one day downwind of mainland Greece revealed the enormous complexity of VOCs in the region (Xu et al., 2003). Moreover, it has been shown that the mixing ratios of many VOCs, especially OVOCs, in the Mediterranean strongly depend on long distance transport and are periodically influenced by biomass burning (Salisbury et al., 2003; Holzinger et al., 2005). Reactive biogenic species such as isoprene have also been shown to be emitted from Mediterranean vegetation (Kesselmeier et al., 1996; Liakakou et al., 2007).

Here we examine the relative impacts of biogenic emissions and long distance pollutant transport from Eastern and Western Europe on trace gas levels, with particular emphasis on VOCs. Moreover, we exploit the island location to investigate the influence of the sea on VOCs since air from Eastern and Western Europe was advected with variable transport times to the site within the marine boundary layer. The effect of the ocean on many VOCs, particularly OVOCs, can be significant and variable in latitude (Yang et al., 2013, 2014), biological activity (Taddei et al., 2009) and time of the day (Sinha et al., 2007).

To this end we have examined the behavior of an alcohol (methanol), a carbonyl (acetone), and an acid (acetic acid). Methanol is primarily emitted from plants (Galbally and Kirstine, 2002), with a relatively small photochemical production term in the estimated global budget, 37 Tg yr⁻¹ from a total of 242 Tg yr⁻¹ found by Millet et al. (2008). However, recent model calculations by Müller et al. (2016) revealed that the photochemical reaction between methyl peroxy and hydroxyl radicals is, depending on the region, a significant source for methanol. The reaction was found to result in 115 Tg yr⁻¹ of methanol, which is in the range of the global terrestrial emissions. For example Millet et al. (2008) list a methanol source from terrestrial plant growth of 80 Tg yr⁻¹ and from plant decay of 23 Tg yr⁻¹. One of the main sinks of methanol is the oxidation by OH, while the role of the ocean is not completely characterized: Millet et al. (2008) report a methanol sink via OH oxidation of 88 Tg yr⁻¹ of a total sink of 242 Tg yr⁻¹. Furthermore Millet et al. (2008) state an oceanic source of 85 Tg yr⁻¹ and an oceanic sink of 101 Tg yr⁻¹ which results in a net sink of 16 Tg yr⁻¹. Jacob et al. (2005) found a loss of methanol via the reaction with OH of 129 Tg yr⁻¹ and an oceanic net sink of 10 Tg yr⁻¹ from a total sink of 206 Tg yr⁻¹.

According to Fischer et al. (2012) the global acetone budget sums up to 146 Tg yr⁻¹, 32 Tg yr⁻¹ being terrestrial emissions from biosphere and 31 Tg yr⁻¹ being photochemical production (26 Tg yr⁻¹ from isoalkanes, mainly anthropogenic, 5 Tg yr⁻¹ biogenic). The main acetone sinks are photolysis and reaction with OH: Fischer et al. (2012) report a loss of 33 Tg yr⁻¹ by OH oxidation and 19 Tg yr⁻¹

90 by photolysis from a total sink of 146 Tg yr^{-1} . Depending on the season and geographical location
the ocean can either be a sink (82 Tg yr^{-1}) or a source (80 Tg yr^{-1}) of acetone (Fischer et al., 2012).
Khan et al. (2015) on the other hand calculate a global acetone source of 72.7 Tg yr^{-1} , of which
 55.6 Tg yr^{-1} are photochemical production from α -pinene, β -pinene and propane and 17.1 Tg yr^{-1}
direct emission. From the total sink of 72.9 Tg yr^{-1} 30.8 Tg yr^{-1} represent OH oxidation, 30.3 Tg yr^{-1}
95 photolysis and 11.8 Tg yr^{-1} dry deposition and the ocean is regarded as being globally in a near
equilibrium state (Khan et al., 2015). A global acetone source of 95 Tg yr^{-1} was given by Jacob et
al. (2002). The main contributions are emissions by terrestrial vegetation (33 Tg yr^{-1}), by the ocean
(27 Tg yr^{-1}) and the oxidation of isoalkanes (21 Tg yr^{-1}). Jacob et al. (2002) determined a sink by OH
reaction of 27 Tg yr^{-1} and by photolysis of 46 Tg yr^{-1} from a total loss of 95 Tg yr^{-1} .

100 Most of the acetic acid budget is in-situ photochemical production, about 59 Tg yr^{-1} from a total
source of 86 Tg yr^{-1} . The total acetic acid sink of 86 Tg yr^{-1} consists of approximately 1/3 photo-
chemical loss (25 Tg yr^{-1}), 1/3 wet deposition (27 Tg yr^{-1}) and 1/3 dry deposition (31 Tg yr^{-1}) (Paulot
et al., 2011).

Using the rate coefficient for each OVOC provided by IUPAC (Atkinson et al., 2006) and the diel
105 mean OH concentration of $2 \times 10^6 \text{ molec cm}^{-3}$ measured during the campaign, the following atmo-
spheric lifetimes with respect to the removal by OH were calculated: 6 days for methanol, 32 days
for acetone and 8 days for acetic acid.

This study was designed to investigate the chemical characteristics of polluted air emerging from the
European continent which is then photochemically processed over the Mediterranean Sea between
110 12 hours and several days en-route to the island of Cyprus. It is therefore in contrast with most at-
mospheric chemistry campaigns that generally investigate source impacted locations (e.g. in forests
and megacities). The novelty of the CYPHEX (CYprus PHotochemical EXperiment) campaign for
VOC research was fourfold: firstly, the relative local impacts on biogenic and transported VOCs
were assessed; secondly, Eastern and Western European outflow was chemically characterized and
115 contrasted ; thirdly, the impact of air masses originating from the residual layer/free troposphere was
examined and fourthly, the influence of summertime Mediterranean marine boundary layer transport
on OVOCs was investigated.

2 Experimental

2.1 Site

120 The measurement site (Ineia) is situated on the northwest coast of Cyprus at the top of a 650 m hill
located ca. 10 km from the shoreline ($34^{\circ}57' \text{ N} / 32^{\circ}23' \text{ E}$). The surrounding area (5 km radius) is
rural in character, comprising of farmland and a few small villages (e.g Ineia population 367^2).
Extending 25 km to the northwest was the Akamas peninsula national park and to the northeast the

²<http://www.populationlist.com>; accessed on 22 April 2017

terrain descended rapidly to the city of Polis (population 1975³) at sea level. Although Cyprus has
125 a population of over 1 million their emissions do not influence this dataset since no Cypriot cities or
industries lie upwind of the site. Instead the measurements analyzed here represent the transported
and photochemically processed pollution emerging from Eastern and Western Europe. The vegeta-
tion is sparse and scrub like. Small trees such as the native pine (*Pinus brutia*), juniper (*Juniperus*
phoenicea) and olives (*Olea europea*), Carob (*Ceratonea siliqua*) are interspersed amidst low lying
130 bushes such as *Inula viscosa* and *Foeniculum vulgare*. In addition small groves of vines, almonds
and pomegranates are kept by some local farmers. In summer, Cyprus is normally influenced by the
Etesian winds, which bring air masses from the north (from Eastern Europe, and crossing Turkey
and Greece). However, in 2014 a southward displacement of the storm track and associated synoptic
weather systems weakened the east-west pressure gradient (Tyrlis et al., 2015) delaying the onset of
135 the Etesian winds and causing periodic influence of air advected from the West over the Mediter-
ranean Sea. Despite clear variation in air mass origin during this campaign (12 July–03 August 2014)
the local wind direction at the site was primarily SW (ca. 70 %, see Fig. 1).

2.2 Instrumentation

Measurement instruments were installed in four air-conditioned laboratory containers, positioned in
140 two stacks of two with a 8 m tall, 0.5 m diameter, high flow ($10 \text{ m}^3 \text{ min}^{-1}$) common inlet situated be-
tween the stacks (see Fig.1). The common inlet was designed to minimize wall losses of species in air
drawn from the 8 m high sampling point, and to avoid small scale measurement differences caused
by individual inlet positioning. For the measurement of VOCs a slower subsample flow (5 L min^{-1})
was drawn through insulated and heated (ca. $35 \text{ }^\circ\text{C}$) Teflon lines (OD = 1.27 cm) installed perpendic-
145 ular to the direction of main inlet flow and into the VOC group measurement container. This air was
analyzed by a Proton Transfer Reaction Time Of Flight Mass Spectrometer (PTR-TOF-MS), an OH
reactivity system, two Gas Chromatography systems with a Flame Ionization Detector (GC-FID)
and one Gas Chromatography system combined with a Mass Spectrometer (GC-MS).

2.2.1 Proton Transfer Reaction Time of Flight Mass Spectrometer

150 On-line VOC measurements were performed with a PTR-TOF-MS (Ionicon Analytik GmbH, Inns-
bruck, Austria). This instrument has been described in detail elsewhere (Graus et al., 2010; Veres
et al., 2013). Post-acquisition data analysis was performed using the program “PTR-TOF DATA
ANALYZER”, which is detailed elsewhere (Müller et al., 2013). The time resolution of the mea-
surements was 1 min, but for the data analysis in this publication 10 min average values were used.
155 The background signal was determined every two hours for twenty minutes by passing air through
a catalytic converter containing platinum coated pellets heated to $320 \text{ }^\circ\text{C}$. The drift pressure was
maintained at 2.20 mbar and the drift voltage 600 V (E/N 137 Td). To perform mass scale calibration

³<http://www.populationlist.com>; accessed on 22 April 2017

1,3,5-trichlorobenzene was permanently bled into the sample stream as an internal standard.

At the beginning and at the end of the campaign a comprehensive 4 point calibration of the instrument (spanning the measured range of compounds) was performed at 4 and 3 different humidities, respectively. The humidity level was determined by using the ratio between the isotope of the water cluster and the isotope of the primary ion and this ratio lay between 0.07 and 0.3 for the different calibrations. These values correspond approximately to a range of 25 % to 80 % relative humidity. A commercial gas standard (Apel-Riemer Environmental) containing 14 compounds was used. Great care was taken to account for this humidity dependence in each datapoint. The sensitivity of the instrument for each individual data point was derived from a linear interpolation over time between the two calibrations and corrected for the co-measured ambient relative humidity at that time. The decrease in sensitivity between the two calibrations (2.5 weeks apart) were generally modest, ranging from 10 % (e.g. isoprene) to 23 % (e.g. methanol).

Most compounds measured by PTR-TOF-MS show a more pronounced humidity dependence between 0 and ca. 15 % relative humidity (whereby dry conditions are most sensitive), but with increasing humidity the dependency weakens so that decreases in sensitivity in the upper humidity range are very small. This behavior which was described by an exponential fit function was observed for all compounds except isoprene and methanol. Isoprene shows almost no humidity dependency, because its reaction rates with the primary ion and the water cluster have roughly the same value as has been previously reported by Smith et al. (2001). The variations in the sensitivity for methanol did not show the same characteristic exponential behavior described above, so that no interpolation was made. However, since the values showed a variation of only 5-10 %, an averaged calibration factor was used instead. The underlying reason for this anomalous behavior is not known in the case of methanol.

Calibration factors were applied by taking the time of the measurement as well as the humidity for each data point into account. Detection limits for each species quantified were determined by calculating the standard deviation of each background measurement. The highest value of these standard deviations was multiplied by 3 to give the detection limit (3σ , 1 minute time resolution). The results lay between 8 pptv (e.g. monoterpenes) and 242 pptv (methanol). 1 pptv is defined as $1 \times 10^{-12} \text{ mol mol}^{-1}$. The total uncertainty is defined by the statistical error, which was calculated from the noise, and the systematic error. The latter contains the error of the calibration, the flow measurements, the calibration gas bottle accuracy as well as the maximum error occurring due to changes in sensitivity. For acetaldehyde an extra term was added that takes problems during background measurements into account. During a few periods of the campaign the ambient humidity was below the lower limit of the calibrated humidity range. The absence of a trend for methanol and isoprene precluded interpolation, while the exponential fit for the other compounds is afflicted with a higher error in this range. The variation in sensitivity in the range below 25 % relative humidity was estimated from previous measurements in our laboratory and was included in the error calculation.

195 The values of the total uncertainty within the calibrated range varied between 10 % (e.g. isoprene)
and 23 % (e.g. methanol) and increased to a maximum of 28 % (methanol) in the low humidity range.
Acetic acid was calibrated separately by the use of a permeation source, because it was not included
in the pressurized gas standard. Literature confirms that the calibration of the PTR-TOF-MS for
acetic acid represents a challenge: Warneke et al. (2001) found no humidity dependency, Feilberg et
200 al. (2010) report a linear relation while Haase et al. (2012) state that the behavior strongly depends
on the instrument itself. For the acid only one calibration was performed in the field with two differ-
ent humidities. After the campaign a second calibration was done in the laboratory at three different
humidities. In our case the calibration performed after the campaign is likely the more reliable, be-
cause the calibrations were performed at more humidity levels and using more calibration steps than
205 in the field. Still, this calibration in the laboratory was done after the instrument was transported so
that we cannot exclude that the sensitivity had changed. In the field as well as in the laboratory it was
found that the sensitivity decreases with increasing humidity. The calibration factors obtained in the
field and in the laboratory differed by a factor of ca. 2.5. Also the slope of the linear interpolations
between the calibration factors of different humidities measured in the laboratory and in the field
210 varied. Therefore the fit parameters of both linear regressions were averaged and the resulting mean
fit function was used to calculate the calibration factor according to the humidity at the time. The
discrepancy in the calibration factors and problems during background measurement lead to a high
total uncertainty of 51% and the detection limit amounts to 264 pptv.

Acetic acid was measured at mass 61.0284 amu, but its mixing ratios must be considered as up-
215 per limits, because the PTR-TOF-MS is not able to distinguish between acetic acid and its isomer
glycolaldehyde (Baasandorj et al., 2014). Furthermore, fragments of peroxyacetic acid (PAA) and
ethyl acetate can also be measured on the exact mass of acetic acid (Baasandorj et al., 2014). How-
ever, since the sources of ethyl acetate are mainly anthropogenic and the measurement site remote,
we assume that the influence of ethyl acetate was negligible. This assumption is supported by the
220 finding that the signal at 61.0284 amu was significantly reduced during periods when the site was
impacted by fog, indicating that the responsible trace gas was highly soluble in water. The poten-
tially interfering molecule ethyl acetate is not nearly as soluble: $0.059 \text{ mol m}^{-3} \text{ Pa}^{-1}$ in comparison to
 $40\text{-}46 \text{ mol m}^{-3} \text{ Pa}^{-1}$ for acetic acid, see (Sander, 2015).

The PTR-TOF-MS was not calibrated for PAA and only detected it with low count rates (ca. 0.3 cps)
225 at mass 77.0233 amu for a few days of the campaign. Španěl et al. (2003) reported that 90 % of
protonated PAA is measured at the exact mass of acetic acid, while 10 % are recorded at the mass
of the mother ion (77.0233 amu). If this is taken into account, PAA would still influence acetic acid,
but between only ca. 10 and 15 % because of the low count rates.

A Chemical Ionization Mass Spectrometer (CIMS) designed to measure PAA was operated in two
230 modes during the campaign (Phillips et al., 2013). From $\sim 17\text{-}24$ July the CIMS measured PAA
only and found very low values, close to the detection limit. From ~ 26 July until the end of the

campaign the collisional dissociation parameters were adjusted and PAA and acetic acid were detected on the same mass (59 amu). It was only discovered after Cyphex that the CIMS measured not only PAA but also acetic acid, and the approximate, relative sensitivity to PAA and acetic acid was only determined a year later. For this reason, the absolute values for the CIMS data are highly uncertain, but indicate that PAA levels were substantially lower than those of acetic acid. Figure 2 displays the acetic acid and the PAA traces as well as their correlation and it can be seen that the PAA data without accompanying detection of acetic acid (black line) showed very low values between 0 and 200 pptv from ~ 17 –24 July. The later period from ~ 26 July until 3 August exhibited much higher signals due to the sum of PAA and acetic acid (red line). The correlation in the CIMS and the PTR-TOF-MS time profiles for the later period with a correlation factor of 0.74 suggests that most of this is due to acetic acid. A direct comparison between the absolute acetic acid values measured by the CIMS and the PTR-TOF-MS system is not possible, because the CIMS signal was analyzed as PAA. Still, due to the very low PAA levels it can be concluded that the potential interference in the PTR-TOF-MS signal for acetic acid is small compared to the 51% total uncertainty of the acetic acid measurements.

The main sources of glycolaldehyde, which is an isomer of acetic acid and can therefore not be distinguished from the acetic acid signal, are biomass burning and secondary production from isoprene and ethene degradation (Niki et al., 1981; Paulson and Seinfeld, 1992). Since the acetonitrile levels stayed low during the whole campaign we can exclude a significant influence of biomass burning. Furthermore, as will be shown in the results section, isoprene levels were low due to the scarce vegetation and low local anthropogenic emissions occurred. The atmospheric lifetime of glycolaldehyde was calculated taking the removal by OH and photolysis into account. During the campaign an average OH concentration of $\sim 2 \times 10^6$ molec cm^{-3} and an average photolysis rate of $\sim 3 \times 10^{-6}$ s^{-1} were determined. Using a reaction rate of 8.0×10^{-12} cm^3 molec $^{-1}$ s^{-1} provided by IUPAC (Atkinson et al., 2006) a lifetime of ~ 15 h was calculated. Wet and dry deposition were not considered in this calculation and would reduce the lifetime even further. In most cases the air masses measured remained roughly 12 h to 5 days over the Mediterranean Sea before reaching Cyprus. This would mean that some glycolaldehyde could survive transport, especially during night, but the amount is expected to be small. Since there is no known ocean source for glycolaldehyde, we can assume that this compound has only a minor effect on the acetic acid signal.

For the reason stated above the remainder of this paper treats mass signals 33.0335 amu, 59.0491 amu and 61.0284 amu as methanol, acetone and acetic acid, respectively.

2.2.2 Monoterpenes, ozone, CO, OH and meteorological parameters

Isoprene and monoterpenes (α -pinene, β -pinene, Δ -3 carene and limonene) were also quantified by a commercial GC-MS system (MSD 5973; Agilent Technologies GmbH) combined with an air sampler and a thermal desorption unit (Markes International GmbH). The sample interval was 45 min,

the sampling time amounted to 20 min, while calibrations were carried out every 8-12 samples with a commercial gas standard mixture (National Physical Laboratory, UK). The detection limit was 1 -
270 2 pptv and the total uncertainty ca. 15 %. The volatiles were trapped at 30 °C on a low-dead-volume quartz cold trap (U-T15ATA; Markes International GmbH), which was packed with two sorbent beds (Tenax TA and Carbograph I). The trap was then heated to 320 °C and the compounds were transferred to a 30 m GC column (DB-624, 0.25mm I.D., 1.4 μ m film; J&W Scientific). The temperature of the GC oven was programmed to stay stable at 40 °C for 5 min, thereafter increase to 140 °C with
275 a rate of 5 °C/min and finally the rate was increased to 40 °C/min to reach the final temperature of 230 °C, which was held for 3 min. Due to co-elution of β -pinene and Δ -3 carene, a separation was not possible and therefore the signal was treated as the sum of the two species.

Ozone was monitored using a U.V. Photometric O₃-Analyzer (model 49, Thermo Environmental Instruments, U.S.) The detection limit was 2 ppbv ((1 ppbv = 1 \times 10⁻⁹ mol mol⁻¹) and the overall un-
280 certainty less than 5 %.

CO was measured by a Room Temperature Quantum Cascade Laser (RT-QCL) (Li et al., 2012). The instrument uses wavelength modulation absorption spectroscopy (2190 cm⁻¹) over a path length of 36 m to measure CO at a time resolution of 1 s. The detection limit was determined to be 0.4 ppbv and the overall uncertainty 14.4 %.

285 Atmospheric OH was recorded during Cyphex using the HORUS (HydrOxyl Radical measurement Unit based on fluorescence Spectroscopy) instrument based on the LIF-FAGE (Laser Induced Fluorescence-Fluorescence Assay by Gas Expansion) technique for atmospheric OH measurements. For further information please refer to (Novelli et al., 2014; Hens et al., 2014; Martinez et al., 2010). The precision for OH measurements is 4.8 \times 10⁵ molec cm⁻³ for 4 min time resolution. The accuracy
290 for OH measurements is 28.5 % (2 σ).

The weather station Vantage Pro2 (Davis Instruments Corp., Hayward, CA) was used to measure temperature, pressure, wind direction and speed, solar radiation and humidity with a time resolution of 1 minute.

A Jenoptik CHM15k ceilometer was used to observe the aerosol backscatter profile, and the STRAT-
295 2D algorithm (Haeffelin et al., 2012) to calculate the mixed-layer height from this observed aerosol backscatter profile.

2.3 Modeling

2.3.1 FLEXPART model

The dynamical transport history of air reaching Cyprus during the CYPHEX campaign was deter-
300 mined by using the Lagrangian particle dispersion model FLEXPART (Stohl et al., 2002, 2005, 2007). It computes trajectories of infinitesimally small air parcels (so-called particles) to describe the transport and diffusion of tracers (Stohl et al., 2005). Thereby mean winds interpolated from

analysis fields and turbulence represented by random motions are used (Stohl et al., 2007).

In this study, FLEXPART was run backward in time from the measurement site driven with analyses
305 from the ECMWF with $0.2^\circ \times 0.2^\circ$ horizontal resolution (derived from T799 spectral truncation),
a vertical resolution of 137 model levels and temporal resolution of 1 h, which was a combination
of 6 h analyses and short-term forecasts. Backward simulations were made for 3 h time intervals be-
tween 12 July 2014 and 03 August 2014 and for each interval 10000 passive air tracer particles were
released and followed backward in time for 120 h. The distribution of tracer particles was analyzed
310 during the 120 h simulation and led to a particle density distribution describing the residence time
in each cell of a defined geographical grid. Column-time integration of residence times resulted in
a horizontal distribution indicating the total upwind area of influence. Regions of higher residence
times during the simulation period identified major transport routes of air reaching the site.

2.3.2 CAABA/MECCA

315 To investigate photochemical processing over the ocean, the observations were compared to simu-
lations with the chemical box model CAABA/MECCA (Sander et al., 2011). We used version 3.8,
which includes the recently developed comprehensive organic reaction scheme MOM (Mainz Or-
ganics Mechanism) by Lelieveld et al. (2016). Focusing on organics, we switched off halogen and
sulfur chemistry, as well as heterogeneous and aqueous phase reactions in view of the low cloudiness
320 and aerosol concentrations. Initial values based on the EMAC model (Jöckel et al., 2016) are avail-
able in the supplement together with a complete list of chemical reactions used in this study, rate
coefficients and references. Photolysis rate constants were calculated for the latitude of Cyprus. The
model simulated a period of two days, starting on 19 July at 6 am. No further emissions were injected
during the model run, except ozone to simulate its entrainment from the residual layer/free tropo-
325 sphere into the boundary layer. Dry deposition as well as uptake by aerosols were not considered in
this study. The results will be discussed in section 3.2.3.

3 Results

3.1 Biogenic compounds

In general, the mixing ratios of biogenic compounds measured at the site were low, with the sum of
330 isoprene (m/z 69.0699 amu) and monoterpenes (m/z 137.1325 amu) never exceeding 500 pptv and a
campaign average daily maximum of ~ 100 pptv for both, measured by the PTR-TOF-MS. This is
in contrast to tropical forest regions where typical values of 7.6 ppbv isoprene and 1 ppbv monoter-
pene have been reported recently (Yañez Serrano et al., 2015) and boreal forest regions where levels
of isoprene and monoterpenes are ca. 100 pptv and 300 pptv respectively (Yassaa et al., 2012). The
335 measured values in this study are consistent with levels reported previously from the Mediterranean
areas (Liakakou et al., 2007; Davison et al., 2009). Comparable emission rates of isoprene and the

sum of monoterpenes can be regarded as typical for the Mediterranean vegetation (Kesselmeier and Staudt, 1999). Isoprene and several different monoterpenes were also measured by a GC-MS system operating at a lower time resolution at the same site. A comparison between the results of the two instruments can be found in the Figures 3 and 4. PTR-TOF-MS data with a 1 min time resolution were merged onto the 20 min sampling time of the GC-MS. The dashed line in these figures refers to a time period where a contamination in the PTR-TOF-MS is assumed. This period was excluded from the comparison. During the day the isoprene data measured by the PTR-TOF-MS were ca. 1.3 times higher than the GC-MS data (Figure 3), while at the low level nighttime values the PTR-TOF-MS system measured ca. 7.5 times more isoprene than the GC-MS (determined from diel median values over the whole campaign). An insufficient determination of the humidity dependency of the PTR-TOF-MS for isoprene can be ruled out as a possible explanation, because isoprene measurements are not dependent on humidity (see section 2.2.1). A correlation of the two datasets (PTR vs. GC data) using a bivariate fit algorithm resulted in a slope of 1.2, an intercept of 10.4 pptv and a r^2 value of 0.88. The reason for the discrepancy is yet unknown. The correlation plots between PTR-TOF-MS and GC-MS measurements can be found in the supplement S1. The data were color coded by the date and time of the recording. It becomes clear that the agreement between the two data sets varied slightly with time. Thus, an instrumental issue during a specific period can not be ruled out. The lower part of Figure 4 shows the data of α -pinene, the sum of β -pinene and Δ^3 -carene as well as limonene measured by the GC-MS system. The sum of the monoterpenes measured by GC-MS are compared to the total monoterpene signal measured by PTR-TOF-MS at 137.13 amu in the upper part. The PTR-TOF-MS data are up to 2.5 times higher than the GC data (determined from diel median values over the whole campaign). This can partly be explained by the fact that the sum on mass 137 amu can also contain monoterpenes other than those quantified by the GC-MS. The correlation between the two signals (bivariate fit algorithm, PTR vs. GC) lead to a slope of 1.6, an intercept of 0.64 pptv and a correlation coefficient $r^2 = 0.80$. This is reasonable given unmeasured monoterpenes by GC-MS. Furthermore, the total monoterpene signal of the PTR-TOF-MS system was calibrated with α -pinene. Thus, slight differences in sensitivity, which occur as soon as α -pinene is not the dominant species, can play a role.

Since both isoprene and monoterpenes have atmospheric lifetimes on the order of minutes to hours with respect to the removal by OH, we concluded that they must have been emitted by local vegetation. Based on ceilometer measurements, they are emitted into a shallow boundary layer of maximum 250 m. Figure 5 displays the campaign 1h - averaged, diel cycles of the sum of the monoterpenes and of isoprene measured by the PTR-TOF-MS instrument. For comparison the GC-MS data of isoprene were added in the upper panel. Keeping in mind that the low time resolution of the GC-MS might statistically bias the result, both instruments show a reasonably similar profile. The median diel cycles of isoprene and the monoterpenes follow a roughly sinusoidal curve and were strongly light dependent. This finding is consistent with the literature concerning isoprene and monoterpene emis-

sions and atmospheric mixing ratios in the Mediterranean area (Kesselmeier et al., 1998; Liakakou
375 et al., 2007; Davison et al., 2009).

Due to the light dependent profiles, it was expected that isoprene levels would decrease to nearly
zero at night, which is the case for the GC-MS signal, but not for the data measured by PTR-TOF-
MS. Therefore it can be concluded that the GC-MS system provides more reliable absolute values.
But, since the focus shall now be placed on the course of the profile and not on the absolute levels,
380 the PTR-TOF-MS data are used in view of the higher time resolution. The emission behavior of the
monoterpenes indicates a domination of a light dependent emission regulation which is typical for
vegetation without VOC reservoirs. Hence, coniferous tree species with resin ducts or herbal plants
with glands play a minor role here. However, an emission classification of all the tree species found
at the site is not available. Furthermore, we must take into account that VOC emissions from plant
385 species with a temperature dependent release from storage pools may also show some degree of light
dependency (Staudt et al., 1997; Owen et al., 2002).

The mean isoprene mixing ratios (Fig. 5) show slightly elevated values in comparison to the me-
dian values in the morning and afternoon. A potential explanation can be found by considering the
changes in meteorological conditions during these parts of the day, e.g. variation of the local bound-
390 ary layer height relative to the hilltop site or the onset of the local sea breeze. The impact of these
changes varied during the campaign, causing the difference between median and mean values. To ex-
emplify this, isoprene from 22 July has been plotted at 1 minute time resolution (Fig. 6). On that day
at around 9:30 am local time the wind changed from N-NE to W-SW direction which was accompa-
nied by a sharp increase in relative humidity and in atmospheric dimethylsulfide (DMS), a species
395 primarily emitted from marine sources (Cline and Bates, 1983; Mesarchaki et al., 2014). Prior to the
change in wind direction, the isoprene mixing ratio began increasing with temperature as expected.
However, as soon as the local sea breeze set-in and the wind direction changed abruptly to the west,
the isoprene levels decreased leaving an early morning spike. The apparent peak in isoprene at ca.
10:00 am is therefore generated by the wind change combined with the shorter section of isoprene
400 emitting vegetated land between the site and the coast when the wind is from the west. This behavior
is consistent with the current understanding that the sea is only a weak source of isoprene and the
main source is the local terrestrial vegetation (Bonsang et al., 1992; Broadgate et al., 1997; Palmer
and Shaw, 2005; Arnold et al., 2009).

Another interesting tracer for the influence of biogenic emissions is the sum of the oxidation products
405 of isoprene (methacrolein, methyl vinyl ketone and isoprene peroxides measured at mass 71.0491 amu)
which can be found in the midsection of Figure 5. The figure reveals that the level of the isoprene
oxidation products, which is a function of the precursor isoprene mixing ratio and the OH concen-
tration, was lower, but started to increase at the same time in the morning as the values of isoprene.
MVK and MAC have a longer lifetime of 5-7 h with respect to OH (2×10^6 molec cm^{-3}) than iso-
410 prene. This means that these compounds can be transported over longer distances than isoprene. But

the main wind direction was SW (see Fig.1), which means that the analyzed air masses were transported over the ocean for at least 12 h before reaching the site (see section 3.2.4). Furthermore the Mediterranean Sea is not a major source of isoprene. Therefore, transport of the oxidation products over long distances can be excluded. Still, the simultaneous increase of isoprene and its oxidation products means that the photochemical oxidation already took place. Most probably the majority of isoprene originates from the 10 km strip of land between the ocean and the site. During that short transport period oxidation already began. After midday OH decreases rapidly which leads to the decline in the mixing ratio of the oxidation products.

In summary, the local vegetation produces modest emissions of reactive isoprene and monoterpenes. Their diel mixing ratio profiles are both light driven with a maximum around midday and slight variations can be traced back to changes in the local meteorology.

3.2 Oxygenated volatile organic compounds (OVOCs)

3.2.1 Local impacts

In contrast to the pronounced diel cycles and low mixing ratios found for the biogenic compounds the oxygenated VOCs showed relatively high values with comparatively little variation, which can be seen in Fig. 7. Only acetic acid mixing ratios have pronounced diel cycles from the east and from the west. During specific nights the site was situated within the residual layer/free troposphere, which is explained in more detail in section 3.2.2. The plots shown in Fig. 7 contain only data measured when the site was within the planetary boundary layer (PBL). It should be noted that the exclusion of the residual layer/free troposphere biases the data set to daytime measurements. For methanol and acetone there is no evidence of a consistently different diel cycle that can be related to local emission or photochemical production over the short strip of land between sea and site. The mixing ratios of these compounds are rather determined by emissions and photochemistry remote from the site. It becomes clear that the mean and median mixing ratios deviate in the morning which can be explained by variable local meteorology.

Methanol exhibited a maximum mean and median mixing ratio in the early morning. Since vegetation is an important daytime source of methanol (Fall and Benson, 1996; Hüve et al., 2007) this increase could be explained by sunlight dependent plant emissions or by evaporation of methanol collected in dew. However, the production and emissions processes in plants are a matter of discussion (Folkers et al., 2008).

An especially pronounced diel cycle of the acetic acid can be found between the 16 and 21 July, which is displayed in Fig. 8. In this part of the campaign a distinct anticorrelation between the acetic acid mixing ratios and humidity is apparent. Fog formation, which occurs under specific meteorological conditions, notably 100 % relative humidity (RH) in the presence of cloud condensation nuclei, leads to droplet sedimentation, so that soluble gases are largely removed. Acetic acid is more

strongly affected than acetone and methanol, because the latter are a factor 143 and 22 less soluble, respectively (Sander, 2015). Uptake to droplets and sedimentation only occurs when 100 % relative humidity is reached and thus cannot explain the diel cycle of acetic acid at less than 100 % RH. Several other effects could play a role in this process: e.g. local photochemical production and
 450 loss of acetic acid, emission from and/or uptake by vegetation and soil, in-mixing from the residual layer/free troposphere by turbulence and/or fog bank formation below the site which was observed on several occasions. To investigate this further the following formula was used to estimate the missing production rate for acetic acid around midday:

$$[Acid] = \frac{P_{res} + P_{OH}}{L_{OH} + L_{dep}} \quad (1)$$

$$455 \quad P_{res} = [Acid] \times (L_{OH} + L_{dep}) - P_{OH} \quad (2)$$

where [Acid] refers to the mean acetic acid mixing ratio around midday, P_{OH} to the photochemical production rate, L_{OH} to the loss rate by the reaction with OH radicals, L_{dep} to the dry deposition velocity. P_{res} represents the residual production rate, which is the sum of several production terms
 460 such as emission from soil and vegetation as well as advection. The mean values at midday were determined from the diel cycles over the whole campaign. L_{OH} was calculated by multiplying the mean value of OH around midday with its reaction rate constant with the acid, which gives a loss rate of 0.016 h^{-1} . The production rate P_{OH} was calculated in the following way: average levels of acetaldehyde as the main precursor and of OH at midday and their reaction rate constant were multiplied,
 465 which gives the production rate of the acetyl peroxy radicals. Taking the measured concentrations of NO and HO_2 and their reaction rate constants with the acetyl peroxy radical into account it was found that the radical reacts to approximately 65 % with NO and 35 % with HO_2 . It has been previously determined that 16 % of the reaction between acetyl peroxy radical and HO_2 produce acetic acid (Groß et al., 2014). Thus, the production rate for acetic acid amounts to $0.0082 \text{ ppbv h}^{-1}$. This
 470 quite low production rate is consistent with the low level of PAA found. For the dry deposition velocity an area weighted average value of 0.427 cm s^{-1} was used, retrieved from the EMAC model. Ceilometer data from the site (height 650 m above sea level) revealed an average of 250 m for the PBL. Thus, the dry deposition velocity amounted to $0.061 \text{ ppbv h}^{-1}$. Applying these values leads to a remaining production rate of $0.087 \text{ ppbv h}^{-1}$. Due to the high uncertainty in many of the applied
 475 values the error of P_{res} amounts to ca. 133 %.

Several effects give rise to the distinct diel profile in acetic acid. For example the term for dry deposition becomes stronger in the evening due to a decreasing boundary layer height. Furthermore concentrations of the OH radical change during the day, which results in variations in both production and loss rates. Additionally in-mixing from the residual layer/free troposphere could contribute

480 to the net, apparent production with the onset of turbulent mixing in the morning. It was found that, in comparison to the PBL, acetic acid levels are elevated in the residual layer/free troposphere (see section 3.2.2) due to the high deposition rate of the acid within the PBL. However, the ceilometer data revealed that the entrainment velocity was very low during daytime (max. $\approx 1 \text{ cm s}^{-1}$). Therefore we assume in-mixing plays only a minor role. Several times during the campaign an extensive
485 fog bank formed below the site in the direction of advecting air. It is therefore concluded that acetic acid was scavenged within this fog bank, which was in close contact with the ground allowing deposition to occur. During the day the fog gradually dispersed which is concurrent with a slow increase in acetic acid mixing ratios caused both by evaporation from the fog and reduction in scavenging.

3.2.2 Transport processes and influence of the source region and the residual layer/free tro- 490 posphere

To investigate the influence of transport processes the source regions and transport pathways of air arriving at the site were examined using the FLEXPART model. The area of influence of each single simulation can be described by the fraction of time the air has spent over different regions. For this study, the upwind region, namely the European continent, has been delineated into color coded
495 sections, see Fig. 9, upper left panel. Thus, the overall transport time for air masses reaching the site can be subdivided in specific colored fractions between 0 and 1. As one single colorbar characterizes the transport history of air at a certain time step, the combination of all colorbars of all single simulations weighted by time results in an overview of the evolution of transport patterns. This is shown in upper part of the right panel of Fig. 9.

500 The lower part of the right panel of Fig. 9 shows for each simulation the fraction of the time the air has spent within the planetary boundary layer, where surface processes (e.g. surface emissions or uptake of trace gases) can influence the air composition. This fraction lay between 10% and 35%. To determine the footprint for a spatially and temporally variable layer as the PBL it was necessary to consider the PBL height over time at each single column within the area of influence. For exam-
505 ple the air mass that arrived on 21 July in Cyprus had spent 30 % of the last 120 h within the PBL (see lower panel on the right in Fig. 9). Of these 30 %, two thirds were affected by Eastern Europe, marked in red, purple and pink. In contrast, on the 25 July the air was 35 % of the time inside the PBL, whereof the main part was within marine boundary layer (MBL, marked in blue).

In the center section of the graph, mixing ratios of methanol and acetone are plotted on the same
510 time scale. From Fig. 9 it can be seen that the mixing ratios of both compounds were higher when the air sampled came from Eastern Europe (red, purple, pink) and lower when arriving from western areas (shades of green). Transport from the West to Cyprus entails longer transport times in the Mediterranean marine boundary layer than from the East. The trend implies that either the sources in Eastern Europe were stronger or removal processes had a greater influence in air transported from
515 the West.

During specific periods of the campaign, ozone showed higher values at night than during the day while relative humidity dropped drastically (see Figure 10). These features indicate that the site was within the residual layer/free troposphere (e.g. Fischer et al., 2003). To separate the data the ozone values were multiplied by the mirrored relative humidity (100-RH). A threshold of 1000 ppbv·% was chosen as a criterion of being in the residual layer/free troposphere. Furthermore, only night time periods were considered, because ceilometer data and vertical profiles from radio sondes confirmed that the site was within the boundary layer during the day. At night the mixed layer height calculations from the ceilometer data are unreliable, due to weak vertical mixing and the incomplete optical overlap of the lidar signal at low heights (Haeffelin et al., 2012). The time periods identified as being within the residual layer/free troposphere are color coded in red in Figure 10. Table 1 separates the averaged mixing ratios of different VOCs, O₃ and CO, measured when sampling the residual layer/free troposphere and the PBL, additionally separated by east and west. It becomes clear that methanol, acetonitrile, acetone and acetic acid levels in the residual layer/free troposphere were higher than those measured in the PBL. Still, compared to the standard deviations, the differences are rather small, especially for acetone and acetic acid. When examining the data from the residual layer/free troposphere, a marked difference can be found between eastern and western flow regimes. Therefore it can be concluded that the source strength on the continents as well as the distance from the source to the site significantly influence the VOC levels.

In the following the influence of the source region is analyzed and only data within the PBL are regarded. Consistent with methanol, acetone and acetic acid, other OVOCs like acetaldehyde and methylethylketone as well as O₃ and CO show higher mixing ratios in air masses with Eastern European origin (see Table 1). The mixing ratio of acetonitrile, a tracer for biomass burning, was between 100 and 110 pptv in both flow regimes. These low mixing ratios and the lack of variability indicates that no air masses influenced by recent biomass burning reached Cyprus in the period of measurement. Anthropogenic tracers, such as the aromatic compounds benzene, toluene and the xylenes, showed very low mixing ratios between 5 and 35 pptv, which confirms the remote location of the site and the minor influence of local anthropogenic emissions. The high standard deviations of these aromatic compounds can be traced back to some occasional spikes. The ozone mixing ratios of 60-70 ppbv are consistent with or even slightly higher than values found in Gerasopoulos et al. (2005) and Kleanthous et al. (2014). The values measured during CYPHEX also exceed the European Air Quality Standard of 120 μg m⁻³ (60 ppbv as a maximum daily 8 h mean)⁴.

In the next section we examine the role of photochemical processes on the mixing ratios of the OVOCs.

⁴<http://ec.europa.eu/environment/air/quality/standards.htm>; accessed 26 April 2017

3.2.3 Investigation of photochemical processes using the CAABA/MECCA box model

550 The CAABA/MECCA box model was used to examine the photochemical processes influencing the mixing ratios of acetone and methanol. In order to simulate conditions in the MBL, where no major sources can be found, only initial values of precursors were set, with further emissions during the run deactivated, except for ozone. Dry deposition was also excluded, because this model run was intended to investigate photochemistry only. The trace gases included, their initial values (which
555 originate from the Mainz Organics Mechanism (MOM) chemistry in the EMAC model (Jöckel et al., 2016)) as well as the chemical degradation scheme can be found in the supplement (S2 and S4). The model mixing ratios cannot be directly compared to the results of section 3.2.1, because processes like transport, ocean emission/uptake or dry deposition were not included in the box model. In Fig. 11 the predicted mixing ratios of methanol and acetone are displayed for a 48 h model run with an
560 initial value for NO_x of 2.4 ppbv. While methanol decreases, the mixing ratio of acetone increases. The analysis revealed that the main process affecting methanol is the degradation by OH radicals. The modeled behavior of acetone is more complex. Among the most important reactions are its loss by OH radical reaction or photolysis as well as its production via the reaction of different intermediates, mainly peroxy radicals, with NO or OH, for example the reaction of isopropyl peroxy radicals (iC₃H₇O₂) with NO. Figures showing the rates of important reactions with a production or
565 loss rate $\geq 10^{-16}$ mol mol⁻¹ s⁻¹ (0.36 pptv/h) can be found in the supplement S3. It can be concluded that secondary production in the MBL plays only a role for acetone, while methanol is only lost.

3.2.4 Influence of marine boundary layer transport on OVOCs

In Fig. 12 mixing ratios of methanol and acetone are plotted against the time the air spent in the
570 marine boundary layer, calculated by adding up the FLEXPART modeled percentage of the influence of the Eastern and Western Mediterranean, the Black Sea, the Caspian Sea and the Atlantic Ocean. The summed percentage was then multiplied by the duration of the modeled backward trajectories (120 h). The data were separated into periods affected by Eastern and by Western Europe. The blue markers refer to the data measured within the PBL, while the red markers represent data recorded
575 while the site was within the residual layer/free troposphere. Since this analysis concentrates on the phenomena occurring within the boundary layer, the focus will be placed on the data measured in the PBL, only. However, it needs to be kept in mind that the air measured when being in the PBL has been influenced by the residual layer/free troposphere as well as the boundary layer during transport. An exponential fit was applied on the blue colored data points using the function:

$$580 \quad [OVOC]_t = [OVOC]_0 \times \exp(-A \times t) \quad (3)$$

[OVOC]₀ represents the value in ppbv that would be measured at the source, t is the time in h and A is the loss rate constant in h⁻¹. The initial methanol and acetone values at the source ([OVOC]₀)

yield 5.2 ± 0.3 ppbv and 3.5 ± 0.2 ppbv from the east and 4.6 ± 0.5 ppbv and 2.7 ± 0.2 ppbv from the west, respectively. These results show that the source strength for acetone is slightly larger in Eastern Europe than in Western Europe, while the initial values for methanol are consistent within the error range. Still, the trend also indicates a larger source strength for methanol from the East. The loss rate constants for methanol and acetone amount to $0.031 \pm 0.004 \text{ h}^{-1}$ and $0.022 \pm 0.003 \text{ h}^{-1}$ from eastern air masses and $0.029 \pm 0.005 \text{ h}^{-1}$ and $0.014 \pm 0.003 \text{ h}^{-1}$ from western air masses, respectively. These loss rate constants over water for the two substances are a function of dilution (by vertical and horizontal mixing), photochemical degradation, uptake or emission by the ocean and production from the oxidation of larger organic molecules. As already mentioned the atmospheric lifetimes with respect to the removal by OH radicals were about 6 days for methanol and 32 days for acetone. FLEXPART calculated transport times from Eastern Europe to Cyprus of roughly 12 h to 2 days and from Western Europe to the site of around 2–5 days. The atmospheric lifetimes of acetone and methanol are relatively long compared to the average transport time. This allows the influence of the MBL to be gauged. The losses of the two OVOCs were calculated using the formula:

$$[OVOC]_t = [OVOC]_0 \times \exp(-(k_{OH} \times [OH] + V_{dep}/H_{PBL}) \times t) \quad (4)$$

where $[OVOC]_t$ is the mixing ratio of the compound at a specific transport time t , $[OVOC]_0$ the mixing ratio determined by the y axis intercept of the exponential fit of the measured data (PBL only), k_{OH} the rate coefficient for the reaction with OH radicals, $[OH]$ the concentration of the OH radicals, V_{dep} the dry deposition velocity and H_{PBL} the height of the PBL. Photolysis rates are so low that they can be neglected, in fact the ground level photolysis rate of acetone is at least ten times lower than the loss rate due to OH. The diel averaged $[OH]$ concentration at the site was measured during the CYPHEX campaign as $2 \times 10^6 \text{ molec cm}^{-3}$. k_{OH} values originate from IUPAC (Atkinson et al., 2006). Since OH concentrations were constrained by measurement with an accuracy of 28.5 % (further analysis see gray dashed line in Fig.12) and the OH rate coefficients are well known this loss term is assumed to be reasonably accurate. Dry deposition velocities, on the other hand, represent a large uncertainty factor and dilution by vertical and horizontal mixing is not accounted for in the equation. The deposition velocities simulated in EMAC (Jöckel et al., 2016) over the Mediterranean Sea were taken and the area weighted average values amounted to 0.030 cm s^{-1} for acetone and $1 \times 10^{-4} \text{ cm s}^{-1}$ for methanol despite the higher solubility of methanol in comparison to acetone. The values are net deposition velocities calculated in a resistant-type scheme based on Wesely (1989) and implemented by Kerckweg et al. (2006), so they do not need to be proportional to the solubilities of the species. As already mentioned, ceilometer data from the site gave a PBL height of 250 m. This PBL was actually an internal boundary layer, that formed inside the marine boundary layer due to thermal and orographic effects, as it was advected over land. For the boundary layer over sea relevant to this study, an average PBL height of 500 m was assumed. Previous aircraft studies in the region (Holzinger et al., 2005) focused on acetonitrile have reported vertical profiles over the sea that show sharp decreases in mixing ratios from 500 m to 250 m supporting the 500 m boundary layer over sea

620 assumption made here. The decreases of acetone and methanol calculated using equation 4 can be
found as black lines in Fig. 12. The gray dashed lines refer to the calculated result when a 28.5 %
higher OH concentration is applied, to account for the OH measurement uncertainty. The blue lines
represent the exponential fit of the data measured within the PBL. It becomes clear that the measured
net loss was larger than the calculated loss for methanol and acetone. Since the difference in slope of
625 the black and gray lines is much smaller than the difference to the measured data, it can be concluded
that the loss through oxidation by OH only plays a minor role. To explain the general trend that the
calculation underestimates the loss of acetone and methanol over the ocean five effects need to be
taken into account: Firstly, vertical transport to the sea surface layer was a limiting factor, so that
turbulence rather than solubility defined the distribution. Secondly, microbial consumption and/or
630 production is a missing sink, thirdly photochemical production played a role, fourthly in-mixing of
air from the residual layer/free troposphere was significant and fifthly the variability in the emissions
at the source had a considerable influence.

A turbulence driven distribution can be the reason why the losses do not represent the solubilities of
the two OVOCs, but it cannot explain the discrepancy between the measured and the calculated loss
635 rate constants of methanol and acetone.

Ocean concentrations and air-sea fluxes of acetone and methanol have been determined previously
(Williams et al., 2004; Sinha et al., 2007) and it has been found for methanol and acetone that the
ocean and air are close to equilibrium on a global scale (Millet et al., 2008; Fischer et al., 2012), but
that a significant aqueous phase production term exists for both species. Regionally, strong biological
640 activity can drive a surface ocean oversaturation of acetone that leads to its emission (Taddei et al.,
2009). Dixon et al. (2014) have shown that methanol is more efficiently consumed microbially than
acetone. One reason for the higher loss rate constant of methanol in comparison to acetone could
therefore be the higher oxidation rate of methanol in the ocean. Since no microbiological influence
is included in the calculation, a consumption of both acetone and methanol by microorganisms could
645 explain the higher measured loss rate constant.

The boxmodel has shown that acetone is weakly photochemically produced over the ocean to some
extent. If a photochemical production term would be included in the formula, then the discrepancy
between the calculation and the measurement would be even higher. Thus, photochemical produc-
tion can not be the missing factor.

650 Another possible reason for the high loss rate constants could be in-mixing of acetone and methanol
poor air from the residual layer/free troposphere. But the data measured when the site was within
the residual layer/free troposphere have shown, that levels of the two OVOCs were elevated above
the boundary layer, so that acetone and methanol rich air would have been entrained. Additionally,
the marine boundary layer is expected to be rather stable due to the high pressure system over the
655 Mediterranean. Thus, in-mixing cannot explain the difference between measurement and calcula-
tion.

Furthermore, the spatially variable emissions on the continents might also be temporally correlated which can influence the measured loss rate constants.

The most plausible explanation for the discrepancy is therefore a combination of a missing sink for methanol and acetone in the ocean, possibly enhanced by microbial consumption, and spatial and temporal variability of the emissions in the source regions.

Dry deposition velocities, that would be necessary to match the measured data, amount to 0.34 cm s^{-1} for methanol and 0.28 cm s^{-1} for acetone in air masses from the East and 0.31 cm s^{-1} for methanol and 0.18 cm s^{-1} for acetone from a western flow regime. It is expected that the results for the dry deposition velocities are independent of the origin of the air mass. This is roughly the case for methanol, but the acetone data require a lower dry deposition velocity for western than for eastern air masses. The reason for that could be that photochemical production of acetone, which was not included in the theoretical formula, plays a role and was different for eastern and western air masses. If the photochemical production would be implemented in the formula, an even higher value for the dry deposition velocity would be necessary so that the result would still match the measured data.

3.2.5 Correlations between acetone, methanol, CO and ozone

Table 2 shows slopes, intercepts and correlation coefficients (r^2) from the bivariate fits between methanol, acetone, CO and ozone separated by eastern and western air masses. Two spikes in the acetone data (occurring at the 24 July and 2 August) and one spike in the CO data were removed, because they were most probably emerging from local sources. The correlations were calculated using the data measured within the PBL, only. It can be seen that acetone and methanol correlate reasonably well, while the correlation factor is higher in eastern than western air masses. As already mentioned horizontal or vertical dilution/ in-mixing, photochemical processes as well as emission or uptake by the ocean play important roles during transport. These effects can influence the various compounds to different degrees, so that divergent correlation factors are expected. A good correlation can be interpreted by a co-location of sources and/or similar production and depletion processes. No correlation was found between methanol and ozone as well as acetone and ozone. The reason are the different sources: ozone is secondarily produced during the transport, while the other two compounds have strong sources on the continent and decrease (methanol) or only slightly increase (acetone) during transport processes. Comparing the two OVOCs to CO (Table 2) shows that the slope as well as the correlation between methanol and CO as well as acetone and CO remained fairly constant between the eastern and western flow regimes (methanol: slope = 0.061 and 0.070, $r^2 = 0.45$ and 0.44 , respectively; acetone: slope = 0.038 and 0.037, $r^2 = 0.59$ and 0.65 , respectively). These correlations appear to be rather insensitive to the combined processes of dilution, marine uptake/emission and photochemical ageing for air masses in this region. The data can be compared to the MINOS campaign, which took place 13 years before in Finokalia, Crete (Salisbury et al.,

2003). One part of the MINOS campaign, with no biomass burning influence and an eastern flow regime (“period 1”), was the most appropriate to compare to the CYPHEX data. Interestingly, the ratio between methanol and CO calculated from Salisbury et al., (2003) (0.02 for “period 1”) is smaller than the one determined in this study (0.031). The reason for this is a lower CO mixing ratio (MINOS: 167 ppbv, CYPHEX: 107 ppbv), while the methanol values were similar in both campaigns (MINOS: 3.34 ppbv, CYPHEX: 3.33 ppbv). In the same way, the acetone/CO ratio measured in this study (0.024) for easterly conditions was larger than the one reported by Salisbury et al., (2003) (0.017, “period 1”) due to lower CO mixing ratios. The decreased CO values might be traced back to the economic crisis in Greece, which led to a reduction of industrial production and therefore to decreasing emissions of anthropogenic compounds like CO.

4 Summary

During the 2014 CYPHEX campaign, trace gases in air masses from Eastern (67 % of the time) and Western Europe (33 % of the time) were monitored. Since the transport routes of the air pass over the Mediterranean Sea the impact of the marine boundary layer on OVOCs could be investigated. Due to the sparse vegetation local biogenic emissions of isoprene and monoterpenes were weak. These species showed typical diel cycles with the highest mixing ratios around midday. The difference in median and mean mixing ratios in the isoprene data could be explained by the boundary layer evolution and the onset of a local sea breeze system. The methanol and acetone mixing ratios revealed relatively little diel variation, but higher absolute mixing ratios, indicating that local emission or production was less significant in comparison to long range transport. Only acetic acid followed a pronounced diel cycle, which is the net effect of photochemical production and loss, direct emission, dry deposition over land and in-cloud scavenging from advecting air masses. The methanol and acetone data showed that uptake to the sea surface was not defined solely by solubility and that the discrepancy between measured and calculated loss rate constant can potentially be explained by a missing sink in the Mediterranean Sea and a emission variability in the source region. The correlation coefficients between the OVOCs were higher in eastern than in western air masses, which can be explained by the longer transport time over the ocean and thus stronger impacts of different production and loss processes in the western flow regime. The ratios of methanol/CO and acetone/CO were higher in this work than in a study performed 13 years before, consistent with the lowering in the regional sources of CO. The results displayed here indicate that air reaching Cyprus from Eastern and Western Europe showed different OVOC characteristics due to different emission patterns, transport times as well as varying impact of photochemical processes, dilution and ocean uptake or emission.

Author contribution

B. Derstroff performed the PTR-TOF-MS measurements and prepared the manuscript with contributions from J. Williams, J. N. Crowley., H. Fischer, J. Kesselmeier and the other co-authors. I. Hüser and H. Harder provided the data of the FLEXPART model, R. Sander instructed the application of the CAABA/MECCA box model. CO and ozone measurements were performed by U. Parchatka and monoterpene measurements by E. Bourtsoukidis. Peracetic acid data were provided by G. J. Phillips and J. N. Crowley, photolysis rates by J. Schuladen, dry deposition rates from the EMAC model by S. Gromov and OH concentrations by C. Mallik and H. Harder. J. N. Crowley and J. Lelieveld designed the study. C. Sauvage, C. Stöner, A. Novelli, L. Tomsche and M. Martinez carried measurements out in Cyprus.

The authors declare that they have no conflict of interest.

Data availability

The data set is available from the CYPHEX server on request. If desired, please send an email to jonathan.williams@mpic.de

Acknowledgements. We would like to thank our engineers Thomas Klüpfel and Rolf Hofmann for their help and support. Furthermore we thank the Cyprus Ministry of Defense for the use of the base of the National Guard at Ineia and the generous assistance of the Lara Naval Observatory staff. Our thanks also go to the Department
745 of Labor Inspection for helping us set up the campaign. Additionally we would like to thank Laurens Ganzeveld for inspiring discussions.

References

- European Commission, <http://ec.europa.eu/environment/air/quality/standards.htm>, accessed 11 July 2016.
- Populationlist, http://www.populationlist.com/Eparchia_Pafou/06/760931/state\T1\textendashpopulation, accessed on 16 August 2016.
- 750 Worldbank, <http://data.worldbank.org/country/cyprus>, accessed on 4 May 2016.
- Arnold, S. R., Spracklen, D. V., Williams, J., Yassaa, N., Sciare, J., Bonsang, B., Gros, V., Peeken, I., Lewis, A. C., Alvain, S., and Moulin, C.: Evaluation of the global oceanic isoprene source and its impacts on marine organic carbon aerosol, *Atmos. Chem. Phys.*, 9, 1253–1262, doi:10.5194/acp-9-1253-2009, <http://www.atmos-chem-phys.net/9/1253/2009/>, 2009.
- 755 Atkinson, R.: Gas-phase tropospheric chemistry of organic compounds: A review, *Atmos. Environ.*, 24, 1–41, doi:10.1016/0960-1686(90)90438-S, <http://www.sciencedirect.com/science/article/pii/096016869090438S>, 1990.
- Atkinson, R., Baulch, D. L., Cox, R. A., Crowley, J. N., Hampson, R. F., Hynes, R. G., Jenkin, M. E., Rossi, M. J., Troe, J., and Subcommittee, I.: Evaluated kinetic and photochemical data for atmospheric chemistry: Volume II - gas phase reactions of organic species, *Atmos. Chem. Phys.*, 6, 3625–4055, doi:10.5194/acp-6-3625-2006, <http://www.atmos-chem-phys.net/6/3625/2006/>, IUPAC Task Group on Atmospheric Chemical Kinetic Data Evaluation, <http://iupac.pole-ether.fr>, accessed on 12 July 2016, 2006.
- 760 Baasandorj, M., Millet, D. B., Hu, L., Mitroo, D., and Williams, B. J.: Measuring acetic and formic acid by proton transfer reaction-mass spectrometry: sensitivity, humidity dependence, and quantifying interferences, *Atmos. Meas. Tech. Discuss.*, 7, 10 883–10 930, doi:10.5194/amtd-7-10883-2014, <http://www.atmos-meas-tech-discuss.net/7/10883/2014/>, 2014.
- 765 Bonsang, B., Polle, C., and Lambert, G.: Evidence for marine production of isoprene, *Geophys. Res. Lett.*, 19, 1129–1132, doi:10.1029/92GL00083, <http://dx.doi.org/10.1029/92GL00083>, 1992.
- 770 Broadgate, W. J., Liss, P. S., and Penkett, S. A.: Seasonal emissions of isoprene and other reactive hydrocarbon gases from the ocean, *Geophys. Res. Lett.*, 24, 2675–2678, doi:10.1029/97GL02736, <http://dx.doi.org/10.1029/97GL02736>, 1997.
- Cline, J. D. and Bates, T. S.: Dimethyl sulfide in the Equatorial Pacific Ocean: A natural source of sulfur to the atmosphere, *Geophys. Res. Lett.*, 10, 949–952, doi:10.1029/GL010i010p00949, <http://dx.doi.org/10.1029/GL010i010p00949>, 1983.
- 775 Davison, B., Taipale, R., Langford, B., Misztal, P., Fares, S., Matteucci, G., Loreto, F., Cape, J. N., Rinne, J., and Hewitt, C. N.: Concentrations and fluxes of biogenic volatile organic compounds above a Mediterranean macchia ecosystem in western Italy, *Biogeosciences*, 6, 1655–1670, doi:10.5194/bg-6-1655-2009, <http://www.biogeosciences.net/6/1655/2009/>, 2009.
- 780 Dixon, J. L., Beale, R., Sargeant, S. L., Tarran, G. A., and Nightingale, P. D.: Microbial acetone oxidation in coastal seawater, *Front. Microbiol.*, 5, doi:10.3389/fmicb.2014.00243, <http://doi.org/10.3389/fmicb.2014.00243>, 2014.
- Doche, C., Dufour, G., Foret, G., Eremenko, M., Cuesta, J., Beekmann, M., and Kalabokas, P.: Summertime tropospheric-ozone variability over the Mediterranean basin observed with IASI, *Atmos. Chem. Phys.*, 14, 10 589–10 600, doi:10.5194/acp-14-10589-2014, <http://www.atmos-chem-phys.net/14/10589/2014/>, 2014.
- 785

- Fall, R. and Benson, A. A.: Leaf methanol — the simplest natural product from plants, *Trends Plant Sci.*, 1, 296 – 301, doi:10.1016/S1360-1385(96)88175-0, <http://www.sciencedirect.com/science/article/pii/S1360138596881750>, 1996.
- 790 Feilberg, A., Liu, D., Adamsen, A. P. S., Hansen, M. J., and Jonassen, K. E. N.: Odorant Emissions from Intensive Pig Production Measured by Online Proton-Transfer-Reaction Mass Spectrometry, *Environ. Sci. Technol.*, 44, 5894–5900, doi:10.1021/es100483s, <http://dx.doi.org/10.1021/es100483s>, 2010.
- Fischer, E. V., Jacob, D. J., Millet, D. B., Yantosca, R. M., and Mao, J.: The role of the ocean in the global atmospheric budget of acetone, *Geophys. Res. Lett.*, 39, doi:10.1029/2011GL050086, <http://dx.doi.org/10.1029/2011GL050086>, 2012.
- 795 Fischer, H., Kormann, R., Klüpfel, T., Gurk, C., Königstedt, R., Parchatka, U., Mühle, J., Rhee, T. S., Brenninkmeijer, C. A. M., Bonasoni, P., and Stohl, A.: Ozone production and trace gas correlations during the June 2000 MINATROC intensive measurement campaign at Mt. Cimone, *Atmos. Chem. Phys.*, 3, 725–738, doi:10.5194/acp-3-725-2003, <http://www.atmos-chem-phys.net/3/725/2003/>, 2003.
- 800 Folkers, A., Hüve, K., Ammann, C., Dindorf, T., Kesselmeier, J., Kleist, E., Kuhn, U., Uerlings, R., and Wildt, J.: Methanol emissions from deciduous tree species: dependence on temperature and light intensity, *Plant Biology*, 10, 65–75, doi:10.1111/j.1438-8677.2007.00012.x, <http://dx.doi.org/10.1111/j.1438-8677.2007.00012.x>, 2008.
- Galbally, I. and Kirstine, W.: The Production of Methanol by Flowering Plants and the Global Cycle of Methanol, *J. Atmos. Chem.*, 43, 195–229, doi:10.1023/A:1020684815474, <http://dx.doi.org/10.1023/A%3A1020684815474>, 2002.
- 805 Gerasopoulos, E., Kouvarakis, G., Vrekoussis, M. and Kanakidou, M., and Mihalopoulos, N.: Ozone variability in the marine boundary layer of the eastern Mediterranean based on 7-year observations, *J. Geophys. Res.*, 110, doi:10.1029/2005JD005991, <http://dx.doi.org/10.1029/2005JD005991>, 2005.
- Graus, M., Müller, M., and Hansel, A.: High Resolution PTR-TOF: Quantification and Formula Confirmation of VOC in Real Time, *J. Am. Soc. Mass. Spectrom.*, 21, 1037–1044, doi:10.1016/j.jasms.2010.02.006, <http://www.sciencedirect.com/science/article/pii/S1044030510001005>, 2010.
- 810 Groß, C. B. M., Dillon, T. J., Schuster, G., Lelieveld, J., and Crowley, J. N.: Direct Kinetic Study of OH and O₃ Formation in the Reaction of CH₃C(O)O₂ with HO₂, *J. Phys. Chem.*, 118, 974–985, doi:10.1021/jp412380z, <http://dx.doi.org/10.1021/jp412380z>, 2014.
- 815 Haase, K. B., Keene, W. C., Pszenny, A. A. P., Mayne, H. R., Talbot, R. W., and Sive, B. C.: Calibration and intercomparison of acetic acid measurements using proton-transfer-reaction mass spectrometry (PTR-MS), *Atmos. Meas. Tech.*, 5, 2739–2750, doi:10.5194/amt-5-2739-2012, <http://www.atmos-meas-tech.net/5/2739/2012/>, 2012.
- Haefelin, M., Angelini, F., Morille, Y., Martucci, G., Frey, S., Gobbi, G. P., Lolli, S., O’Dowd, C. D., Sauvage, L., Xueref-Rémy, I., Wastine, B., and Feist, D. G.: Evaluation of Mixing-Height Retrievals from Automatic Profiling Lidars and Ceilometers in View of Future Integrated Networks in Europe, *Boundary-Layer Meteorology*, 143, 49–75, doi:10.1007/s10546-011-9643-z, <http://dx.doi.org/10.1007/s10546-011-9643-z>, 2012.
- 820 Hens, K., Novelli, A., Martinez, M., Auld, J., Axinte, R., Bohn, B., Fischer, H., Keronen, P., Kubistin, D., Nölscher, A. C., Oswald, R., Paasonen, P., Petäjä, T., Regelin, E., Sander, R., Sinha, V., Sipilä, M., Taraborrelli, D., Tatum Ernest, C., Williams, J., Lelieveld, J., and Harder, H.: Observation and modelling
- 825

of HO_x radicals in a boreal forest, *Atmos. Chem. Phys.*, 14, 8723–8747, doi:10.5194/acp-14-8723-2014, <http://www.atmos-chem-phys.net/14/8723/2014/>, 2014.

Holzinger, R., Williams, J., Salisbury, G., Klüpfel, T., de Reus, M., Traub, M., Crutzen, P. J., and Lelieveld, J.: Oxygenated compounds in aged biomass burning plumes over the Eastern Mediterranean: evidence for
830 strong secondary production of methanol and acetone, *Atmos. Chem. Phys.*, 5, 39–46, doi:10.5194/acp-5-39-2005, <http://www.atmos-chem-phys.net/5/39/2005/>, 2005.

Hüve, K., Christ, M. M., Kleist, E., Uerlings, R., Niinemets, Ü., Walter, A., and Wildt, J.: Simultaneous growth and emission measurements demonstrate an interactive control of methanol release by leaf expansion and stomata, *J. Exp. Bot.*, 58, 1783–1793, doi:10.1093/jxb/erm03, [http://jxb.oxfordjournals.org/content/early/](http://jxb.oxfordjournals.org/content/early/2007/03/20/jxb.erm038)
835 [2007/03/20/jxb.erm038](http://jxb.oxfordjournals.org/content/early/2007/03/20/jxb.erm038), 2007.

Jöckel, P., Tost, H., Pozzer, A., Kunze, M., Kirner, O., Brenninkmeijer, C. A. M., Brinkop, S., Cai, D. S., Dyroff, C., Eckstein, J., Frank, F., Garny, H., Gottschaldt, K.-D., Graf, P., Grewe, V., Kerkweg, A., Kern, B., Matthes, S., Mertens, M., Meul, S., Neumaier, M., Nützel, M., Oberländer-Hayn, S., Ruhnke, R., Runde, T., Sander, R., Scharffe, D., and Zahn, A.: Earth System Chemistry integrated Modelling (ESCiMo) with the Modular
840 Earth Submodel System (MESSy) version 2.51, *Geosci. Model Dev.*, 9, 1153–1200, doi:10.5194/gmd-9-1153-2016, <http://www.geosci-model-dev.net/9/1153/2016/>, 2016.

Kalabokas, P., Mihalopoulos, N., Ellul, R., Kleanthous, S., and Repapis, C.: An investigation of the meteorological and photochemical factors influencing the background rural and marine surface ozone levels in the Central and Eastern Mediterranean, *Atmos. Environ.*, 42, 7894–7906, doi:10.1016/j.atmosenv.2008.07.009,
845 <http://www.sciencedirect.com/science/article/pii/S1352231008006407>, 2008.

Kalabokas, P. D., Volz-Thomas, A., Brioude, J., Thouret, V., Cammas, J.-P., and Repapis, C. C.: Vertical ozone measurements in the troposphere over the Eastern Mediterranean and comparison with Central Europe, *Atmos. Chem. Phys.*, 7, 3783–3790, doi:10.5194/acp-7-3783-2007, [http://www.atmos-chem-phys.net/7/3783/](http://www.atmos-chem-phys.net/7/3783/2007/)
2007/, 2007.

850 Kalabokas, P. D., Cammas, J.-P., Thouret, V., Volz-Thomas, A., Boulanger, D., and Repapis, C. C.: Examination of the atmospheric conditions associated with high and low summer ozone levels in the lower troposphere over the eastern Mediterranean, *Atmos. Chem. Phys.*, 13, 10339–10352, doi:10.5194/acp-13-10339-2013, <http://www.atmos-chem-phys.net/13/10339/2013/>, 2013.

Kerkweg, A., Buchholz, J., Ganzeveld, L., Pozzer, A., Tost, H., and Jöckel, P.: Technical Note: An implementation of the dry removal processes DRY DEPosition and SEDimentation in the Modular Earth Submodel System (MESSy), *Atmos. Chem. Phys.*, 6, 4617–4632, doi:10.5194/acp-6-4617-2006, <http://www.atmos-chem-phys.net/6/4617/2006/>, 2006.

855 Kesselmeier, J. and Staudt, M.: Biogenic Volatile Organic Compounds (VOC): An Overview on Emission, Physiology and Ecology, *J. Atmos. Chem.*, 33, 23–88, doi:10.1023/A:1006127516791, [http://dx.doi.org/10.](http://dx.doi.org/10.1023/A%3A1006127516791)
860 [1023/A%3A1006127516791](http://dx.doi.org/10.1023/A%3A1006127516791), 1999.

Kesselmeier, J., Schäfer, L., Ciccioli, P., Brancaleoni, E., Cecinato, A., Frattoni, M., Foster, P., Jacob, V., Denis, J., Fugit, J., Dutaur, L., and Torres, L.: Emission of monoterpenes and isoprene from a Mediterranean oak species *Quercus ilex* L. measured within the BEMA (Biogenic Emissions in the Mediterranean Area) project, *Atmos. Environ.*, 30, 1841–1850, doi:10.1016/1352-2310(95)00376-2, <http://www.sciencedirect.com/science/article/pii/1352231095003762>, 1996.

865 [com/science/article/pii/1352231095003762](http://www.sciencedirect.com/science/article/pii/1352231095003762), 1996.

- Kesselmeier, J., Bode, K., Schäfer, L., Schebeske, G., Wolf, A., Brancaleoni, E., Cecinato, A., Ciccioli, P., Frattoni, M., Dutaur, L., Fugit, J. L., Simon, V., and Torres, L.: Simultaneous field measurements of terpene and isoprene emissions from two dominant Mediterranean oak species in relation to a North American species, *Atmos. Environ.*, 32, 1947–1953, doi:10.1016/S1352-2310(97)00500-1, <http://www.sciencedirect.com/science/article/pii/S1352231097005001>, 1998.
- 870
- Khan, M., Cooke, M., Utembe, S., Archibald, A., Maxwell, P., Morris, W., Xiao, P., Derwent, R., Jenkin, M., Percival, C., Walsh, R., Young, T., Simmonds, P., Nickless, G., O’Doherty, S., and Shallcross, D.: A study of global atmospheric budget and distribution of acetone using global atmospheric model STOCHEM-CRI, *Atmos. Environ.*, 112, 269–277, doi:<http://dx.doi.org/10.1016/j.atmosenv.2015.04.056>, <http://www.sciencedirect.com/science/article/pii/S1352231015300595>, 2015.
- 875
- Kleanthous, S., Vrekoussis, M., Mihalopoulos, N., Kalabokas, P., and Lelieveld, J.: On the temporal and spatial variation of ozone in Cyprus, *Sci. total Environ.*, 476–477, 677–687, doi:10.1016/j.scitotenv.2013.12.101, <http://www.sciencedirect.com/science/article/pii/S0048969713015842>, 2014.
- Kourtidis, K., Zerefos, C., Rapsomanikis, S., Simeonov, V., Balis, D., Perros, P. E., Thompson, A. M., Witte, J., Calpini, B., Sharobiem, W. M., Papayannis, A., Mihalopoulos, N., and Drakou, R.: Regional levels of ozone in the troposphere over eastern Mediterranean, *J. Geophys. Res.*, 107, doi:10.1029/2000JD000140, <http://dx.doi.org/10.1029/2000JD000140>, 2002.
- 880
- Kouvarakis, G., Vrekoussis, M., Mihalopoulos, N., Kourtidis, K., Rappenglueck, B., Gerasopoulos, E., and Zerefos, C.: Spatial and temporal variability of tropospheric ozone (O₃) in the boundary layer above the Aegean Sea (eastern Mediterranean), *J. Geophys. Res.*, 107, doi:10.1029/2000JD000081, <http://dx.doi.org/10.1029/2000JD000081>, 2002.
- 885
- Lelieveld, J., Berresheim, H., Borrmann, S., Crutzen, P. J., Dentener, F. J., Fischer, H., Feichter, J., Flatau, P. J., Heland, J., Holzinger, R., Kormann, R., Lawrence, M. G., Levin, Z., Markowicz, K. M., Mihalopoulos, N., Minikin, A., Ramanathan, V., de Reus, M., Roelofs, G. J., Scheeren, H. A., Sciare, J., Schlager, H., Schultz, M., Siegmund, P., Steil, B., Stephanou, E. G., Stier, P., Traub, M., Warneke, C., Williams, J., and Ziereis, H.: Global Air Pollution Crossroads over the Mediterranean, *Science*, 298, 794–799, doi:10.1126/science.1075457, <http://dx.doi.org/10.1126/science.1075457>, 2002.
- 890
- Lelieveld, J., Gromov, S., Pozzer, A., and Taraborrelli, D.: Global tropospheric hydroxyl distribution, budget and reactivity, *Atmos. Chem. Phys. Discuss.*, 2016, 1–25, doi:10.5194/acp-2016-160, <http://www.atmos-chem-phys-discuss.net/acp-2016-160/>, 2016.
- 895
- Li, J., Parchatka, U., Königstedt, R., and Fischer, H.: Real-time measurements of atmospheric CO using a continuous-wave room temperature quantum cascade laser based spectrometer, *Opt. Express*, 20, 7590–7601, doi:10.1364/OE.20.007590, <http://www.opticsexpress.org/abstract.cfm?URI=oe-20-7-7590>, 2012.
- Liakakou, E., Vrekoussis, M., Bonsang, B., Donousis, C., Kanakidou, M., and Mihalopoulos, N.: Isoprene above the Eastern Mediterranean: Seasonal variation and contribution to the oxidation capacity of the atmosphere, *Atmos. Environ.*, 41, 1002–1010, doi:10.1016/j.atmosenv.2006.09.034, <http://www.sciencedirect.com/science/article/pii/S1352231006009721>, 2007.
- 900
- Martinez, M., Harder, H., Kubistin, D., Rudolf, M., Bozem, H., Eerdekens, G., Fischer, H., Klüpfel, T., Gurk, C., Königstedt, R., Parchatka, U., Schiller, C. L., Stickler, A., Williams, J., and Lelieveld, J.: Hydroxyl radicals

- 905 in the tropical troposphere over the Suriname rainforest: airborne measurements, *Atmos. Chem. Phys.*, 10, 3759–3773, doi:10.5194/acp-10-3759-2010, <http://www.atmos-chem-phys.net/10/3759/2010/>, 2010.
- Mesarchaki, E., Yassaa, N., D., H., Lutterbeck, H. E., Zindler, C., and Williams, J.: A novel method for the measurement of VOCs in seawater using needle trap devices and GC–MS, *Mar. Chem.*, 149, 1–8, doi:10.1016/j.marchem.2013.12.001, <http://www.sciencedirect.com/science/article/pii/S0304420313002077>, 2014.
- 910 Millet, D. B., Jacob, D. J., Custer, T. G., de Gouw, J. A., Goldstein, A. H., Karl, T., Singh, H. B., Sive, B. C., Talbot, R. W., Warneke, C., and Williams, J.: New constraints on terrestrial and oceanic sources of atmospheric methanol, *Atmos. Chem. Phys.*, 8, 6887–6905, doi:10.5194/acp-8-6887-2008, <http://www.atmos-chem-phys.net/8/6887/2008/>, 2008.
- 915 Müller, J., Liu, Z., Nguyen, V. S., Stavrakou, T., Harvey, J. N., and Peeters, J.: The reaction of methyl peroxy and hydroxyl radicals as a major source of atmospheric methanol, *Nature Communications*, 7, 13 213, doi:10.1038/ncomms13213, <http://search.proquest.com/docview/1829500178?accountid=104641>, 2016.
- Müller, M., Mikoviny, T., Jud, W., D’Anna, B., and Wisthaler, A.: A new software tool for the analysis of high resolution PTR-TOF mass spectra, *Chemometrics Intell. Lab. Sys.*, 127, 158–165, doi:10.1016/j.chemolab.2013.06.011, <http://www.sciencedirect.com/science/article/pii/S0169743913001275>, 2013.
- 920 Niki, H., Maker, P. D., Savage, C. M., and Breitenbach, L. P.: An FTIR study of mechanisms for the HO radical initiated oxidation of C₂H₄ in the presence of NO: detection of glycolaldehyde, *Chem. Phys. Lett.*, 80, 1981.
- Novelli, A., Hens, K., Tatum Ernest, C., Kubistin, D., Regelin, E., Elste, T., Plass-Dülmer, C., Martinez, M., 925 Lelieveld, J., and Harder, H.: Characterisation of an inlet pre-injector laser-induced fluorescence instrument for the measurement of atmospheric hydroxyl radicals, *Atmos. Meas. Tech.*, 7, 3413–3430, doi:10.5194/amt-7-3413-2014, <http://www.atmos-meas-tech.net/7/3413/2014/>, 2014.
- Owen, S. M., Harley, P., Guenther, A., and Hewitt, C. N.: Light dependency of {VOC} emissions from selected Mediterranean plant species, *Atmos. Environ.*, 36, 3147 – 3159, doi:10.1016/S1352-2310(02)00235-2, // 930 www.sciencedirect.com/science/article/pii/S1352231002002352, 2002.
- Palmer, P. I. and Shaw, S. L.: Quantifying global marine isoprene fluxes using MODIS chlorophyll observations, *Geophys. Res. Lett.*, 32, doi:10.1029/2005GL022592, <http://dx.doi.org/10.1029/2005GL022592>, 2005.
- Paulot, F., Wunch, D., Crouse, J. D., Toon, G. C., Millet, D. B., DeCarlo, P. F., Vigouroux, C., Deutscher, N. M., González Abad, G., Notholt, J., Warneke, T., Hannigan, J. W., Warneke, C., de Gouw, J. A., Dunlea, 935 E. J., De Mazière, M., Griffith, D. W. T., Bernath, P., Jimenez, J. L., and Wennberg, P. O.: Importance of secondary sources in the atmospheric budgets of formic and acetic acids, *Atmos. Chem. Phys.*, 11, 1989–2013, doi:10.5194/acp-11-1989-2011, www.atmos-chem-phys.net/11/1989/2011/, 2011.
- Paulson, S. E. and Seinfeld, J. H.: Development and Evaluation of a Photooxidation Mechanism for Isoprene, *J. Geophys. Res.*, 97, 20, 703–20,715, 1992.
- 940 Phillips, G. J., Pouvesle, N., Thieser, J., Schuster, G., Axinte, R., Fischer, H., Williams, J., Lelieveld, J., and Crowley, J. N.: Peroxyacetyl nitrate (PAN) and peroxyacetic acid (PAA) measurements by iodide chemical ionisation mass spectrometry: first analysis of results in the boreal forest and implications for the measurement of PAN fluxes, *Atmos. Chem. Phys.*, 13, 1129–1139, doi:10.5194/acp-13-1129-2013, <http://www.atmos-chem-phys.net/13/1129/2013/>, 2013.

- 945 Salisbury, G., Williams, J., Holzinger, R., Gros, V., Mihalopoulos, N., Vrekoussis, M., Sarda-Estève, R., Berresheim, H., von Kuhlmann, R., Lawrence, M., and Lelieveld, J.: Ground-based PTR-MS measurements of reactive organic compounds during the MINOS campaign in Crete, July–August 2001, *Atmos. Chem. Phys.*, 3, 925–940, doi:10.5194/acp-3-925-2003, <http://www.atmos-chem-phys.net/3/925/2003/>, 2003.
- Sander, R.: Compilation of Henry's law constants (version 4.0) for water as solvent, *Atmos. Chem. Phys.*, 15, 4399–4981, doi:10.5194/acp-15-4399-2015, <http://www.atmos-chem-phys.net/15/4399/2015/>, 2015.
- 950 Sander, R., Baumgaertner, A., Gromov, S., Harder, H., Jöckel, P., Kerkweg, A., Kubistin, D., Regelin, E., Riede, H., Sandu, A., Taraborrelli, D., Tost, H., and Xie, Z.-Q.: The atmospheric chemistry box model CAABA/MECCA-3.0, *Geosci. Model Dev.*, 4, 373–380, doi:10.5194/gmd-4-373-2011, <http://www.geosci-model-dev.net/4/373/2011/>, 2011.
- 955 Sinha, V., Williams, J., Meyerhöfer, M., Riebesell, U., Paulino, A. I., and Larsen, A.: Air-sea fluxes of methanol, acetone, acetaldehyde, isoprene and DMS from a Norwegian fjord following a phytoplankton bloom in a mesocosm experiment, *Atmos. Chem. Phys.*, 7, 739–755, doi:10.5194/acp-7-739-2007, <http://www.atmos-chem-phys.net/7/739/2007/>, 2007.
- Spanel, P., Diskin, A., Wang, T., and Smith, D.: A SIFT study of the reactions of H_3O^+ , NO^+ , and O_2^+ with hydrogen peroxide and peroxyacetic acid, *Int. J. Mass Spectrom.*, 228, 269–283, doi:10.1016/S1387-3806(03)00214-8, <http://www.sciencedirect.com/science/article/pii/S1387380603002148>, 2003.
- 960 Staudt, M., Bertin, N., Hansen, U., Seufert, G., Cicciolij, P., Foster, P., Frenzel, B., and Fugit, J.-L.: Seasonal and diurnal patterns of monoterpene emissions from *Pinus pinea* (L.) under field conditions, *Atmos. Environ.*, 31, 145–156, doi:10.1016/S1352-2310(97)00081-2, <http://www.sciencedirect.com/science/article/pii/S1352231097000812>, 1997.
- 965 Stohl, A., Eckhardt, S., Forster, C., James, P., Spichtinger, N., and Seibert, P.: A replacement for simple back trajectory calculations in the interpretation of atmospheric trace substance measurements, *Atmos. Environ.*, 36, 4635–4648, doi:10.1016/S1352-2310(02)00416-8, <http://www.sciencedirect.com/science/article/pii/S1352231002004168>, 2002.
- 970 Stohl, A., Forster, C., Frank, A., Seibert, P., and Wotawa, G.: Technical note: The Lagrangian particle dispersion model FLEXPART version 6.2, *Atmos. Chem. Phys.*, 5, 2461–2474, doi:10.5194/acp-5-2461-2005, <http://www.atmos-chem-phys.net/5/2461/2005/>, 2005.
- Stohl, A., Berg, T., Burkhardt, J. F., Fjérraa, A. M., Forster, C., Herber, A., Hov, Ø., Lunder, C., McMillan, W. W., Oltmans, S., Shiobara, M., Simpson, D., Solberg, S., Stebel, K., Ström, J., Tørseth, K., Treffeisen, R., 975 Virkkunen, K., and Yttri, K. E.: Arctic smoke — record high air pollution levels in the European Arctic due to agricultural fires in Eastern Europe in spring 2006, *Atmos. Chem. Phys.*, 7, 511–534, doi:10.5194/acp-7-511-2007, <http://www.atmos-chem-phys.net/7/511/2007/>, 2007.
- Taddei, S., Toscano, P., Gioli, B., Matese, A., Miglietta, F., Vaccari, F. P., Zaldei, A., Custer, T., and Williams, J.: Carbon Dioxide and Acetone Air Sea Fluxes over the Southern Atlantic, *Environ. Sci. Technol.*, 43, 5218–5222, doi:10.1021/es8032617, <http://dx.doi.org/10.1021/es8032617>, 2009.
- 980 Tyrllis, E., Tymvios, F. S., Giannakopoulos, C., and Lelieveld, J.: The role of blocking in the summer 2014 collapse of Etesians over the eastern Mediterranean, *J. Geophys. Res. - Atmos.*, 120, 6777–6792, doi:10.1002/2015JD023543, <http://dx.doi.org/10.1002/2015JD023543>, 2015.

- Veres, P. R., Faber, P., Drewnick, F., Lelieveld, J., and Williams, J.: Anthropogenic sources
985 of VOC in a football stadium: Assessing human emissions in the atmosphere, *Atmos. Environ.*, 77, 1052–1059, doi:10.1016/j.atmosenv.2013.05.076, <http://www.sciencedirect.com/science/article/pii/S1352231013004494>, 2013.
- Warneke, C., van der Veen, C., Luxembourg, S., de Gouw, J. A., and Kok, A.: Measurements of benzene and
toluene in ambient air using proton-transfer-reaction mass spectrometry: calibration, humidity dependence,
990 and field intercomparison, *Int. J. Mass Spectrom.*, 207, 167 – 182, doi:10.1016/S1387-3806(01)00366-9,
<http://www.sciencedirect.com/science/article/pii/S1387380601003669>, 2001.
- Wesely, M.: Parameterization of surface resistances to gaseous dry deposition in regional-scale numerical models,
Atmos. Environ. (1967), 23, 1293–1304, doi:10.1016/0004-6981(89)90153-4, <http://www.sciencedirect.com/science/article/pii/0004698189901534>, 1989.
- 995 Williams, J., Holzinger, R., Gros, V., Xu, X., Atlas, E., and Wallace, D. W. R.: Measurements of organic species
in air and seawater from the tropical Atlantic, *Geophys. Res. Lett.*, 31, doi:10.1029/2004GL020012, <http://dx.doi.org/10.1029/2004GL020012>, 2004.
- Xu, X., Stee, L. L. P., Williams, J., Beens, J., Adahchour, M., Vreuls, R. J. J., Brinkman, U. A., and
Lelieveld, J.: Comprehensive two-dimensional gas chromatography (GC × GC) measurements of volatile
1000 organic compounds in the atmosphere, *Atmos. Chem. Phys.*, 3, 665–682, doi:10.5194/acp-3-665-2003,
<http://www.atmos-chem-phys.net/3/665/2003/>, 2003.
- Yañez Serrano, A. M., Nölscher, A. C., Williams, J., Wolff, S., Alves, E., Martins, G. A., Bourtsoukidis,
E., Brito, J., Jardine, K., Artaxo, P., and Kesselmeier, J.: Diel and seasonal changes of biogenic
volatile organic compounds within and above an Amazonian rainforest, *Atmos. Chem. Phys.*, 15, 3359–
1005 3378, doi:10.5194/acp-15-3359-2015, <http://www.atmos-chem-phys.net/15/3359/2015/acp-15-3359-2015.html>, 2015.
- Yang, M., Nightingale, P. D., Beale, R., Liss, P. S., Blomquist, B., and Fairall, C.: Atmospheric deposition
of methanol over the Atlantic Ocean, *Proc. Natl. Acad. Sci. USA*, 110, 20034–20039,
doi:10.1073/pnas.1317840110, <http://www.pnas.org/content/110/50/20034.abstract>, 2013.
- 1010 Yang, M., Beale, R., Liss, P., Johnson, M., Blomquist, B., and Nightingale, P.: Air–sea fluxes of oxygenated
volatile organic compounds across the Atlantic Ocean, *Atmos. Chem. Phys.*, 14, 7499–7517,
doi:10.5194/acp-14-7499-2014, <http://www.atmos-chem-phys.net/14/7499/2014/>, 2014.
- Yassaa, N., Song, W., Lelieveld, J., Vanhatalo, A., Bäck, J., and Williams, J.: Diel cycles of isoprenoids
in the emissions of Norway spruce, four Scots pine chemotypes, and in Boreal forest ambient air during
1015 HUMPPA-COPEC-2010, *Atmos. Chem. Phys.*, 12, 7215–7229, doi:10.5194/acp-12-7215-2012, <http://www.atmos-chem-phys.net/12/7215/2012/>, 2012.

Table 1. Averaged data of VOCs, O₃ and CO and their standard deviation in pptv based on a 10 min time resolution. The data were separated into periods reached by air from eastern or western regions as well as into values measured when the site was within the residual layer/free troposphere (RL/FT) and those recorded when the site was within the PBL.

Compound	East RL/FT	Std. dev. east RL/FT	West RL/FT	Std. dev. west RL/FT	East PBL	Std. dev. east PBL	West PBL	Std. dev. west PBL
Methanol	4389	866	3251	241	3328	841	2465	681
Acetonitrile	132	19	147	22	107	21	102	25
Acetaldehyde	345	112	190	33	377	153	254	95
Acetone	3158	694	2099	157	2531	463	1978	359
Acetic acid	1709	681	1039	165	1164	516	737	310
Isoprene	15	16	3	4	77	66	55	53
Methylvinylketone Methacrolein/ISOPOOH	9	7	4	3	31	30	23	31
Methylethylketone	124	40	44	10	128	30	87	16
Benzene	34	19	13	3	34	14	16	8
Toluene	5	3	2	2	11	8	6	5
Total xylenes	7	5	4	4	11	19	10	46
Total trimethylbenzenes	5	3	2	2	8	8	7	27
Total monoterpenes	11	14	4	2	66	57	46	42
Ozone	82364	9911	73096	5771	71463	7985	60090	7621
Carbonmonoxide	110522	11497	95484	7914	106593	10179	90715	6517

Table 2. Slope, intercept and correlation coefficient (r^2) of different compounds separated in air masses from Eastern and Western Europe

Eastern air masses	Western air masses
Methanol vs. acetone <i>slope</i> = 2.0, <i>intercept</i> = -1.7, r^2 = 0.73	Methanol vs. acetone <i>slope</i> = 2.5, <i>intercept</i> = -2.5, r^2 = 0.68
Methanol vs. ozone <i>slope</i> = 0.043, <i>intercept</i> = 0.23, r^2 = 0.17	Methanol vs. ozone <i>slope</i> = 0.0088, <i>intercept</i> = 1.9, r^2 = 0.0096
Methanol vs. CO <i>slope</i> = 0.061, <i>intercept</i> = -3.2, r^2 = 0.45	Methanol vs. CO <i>slope</i> = 0.070, <i>intercept</i> = -3.9, r^2 = 0.44
Acetone vs. ozone <i>slope</i> = 0.023, <i>intercept</i> = 0.90, r^2 = 0.16	Acetone vs. ozone <i>slope</i> = 0.0045, <i>intercept</i> = 1.7, r^2 = 0.013
Acetone vs. CO <i>slope</i> = 0.038, <i>intercept</i> = -1.6, r^2 = 0.59	Acetone vs. CO <i>slope</i> = 0.037, <i>intercept</i> = -1.4, r^2 = 0.65

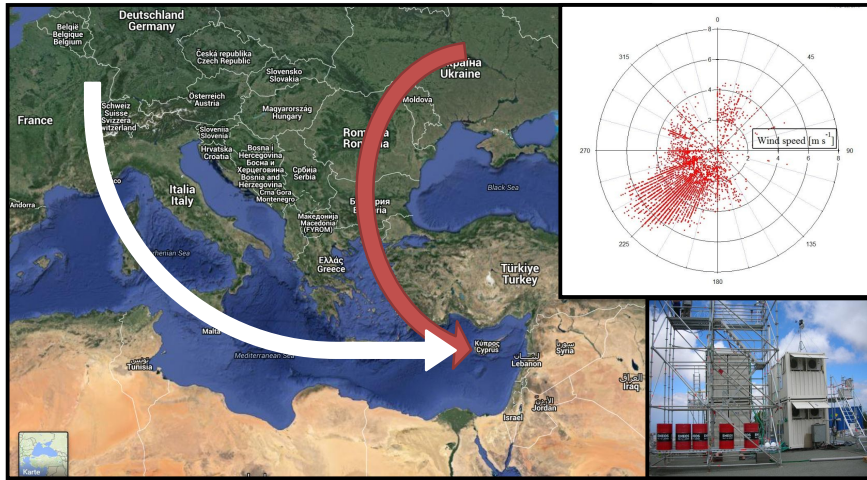


Figure 1. Map of the Mediterranean basin (Source: Google). The white arrow shows the inflow from Western and the red the inflow from Eastern Europe. On the right hand side a wind rose displaying the dominant wind direction and a picture of the laboratory containers can be seen.

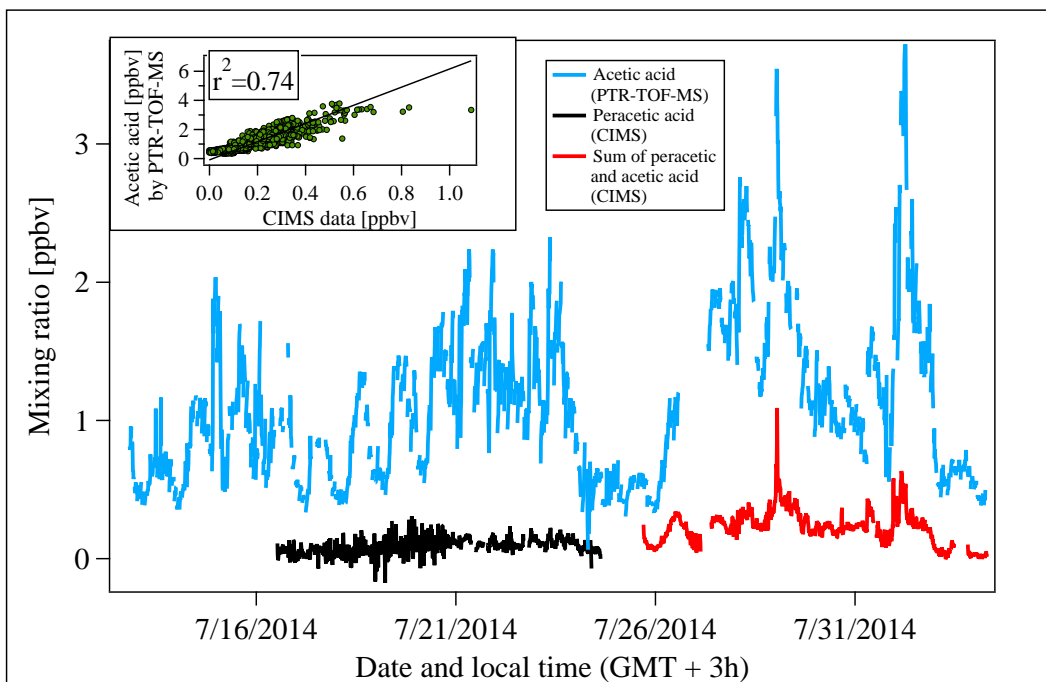


Figure 2. Time traces of peracetic acid (black) and the sum of peracetic and acetic acid (red) measured by CIMS as well as acetic acid measured by PTR-TOF-MS (10 min mean values). The upper left plot shows the correlation between PTR-TOF-MS and CIMS data from 26 July until the end of the campaign.

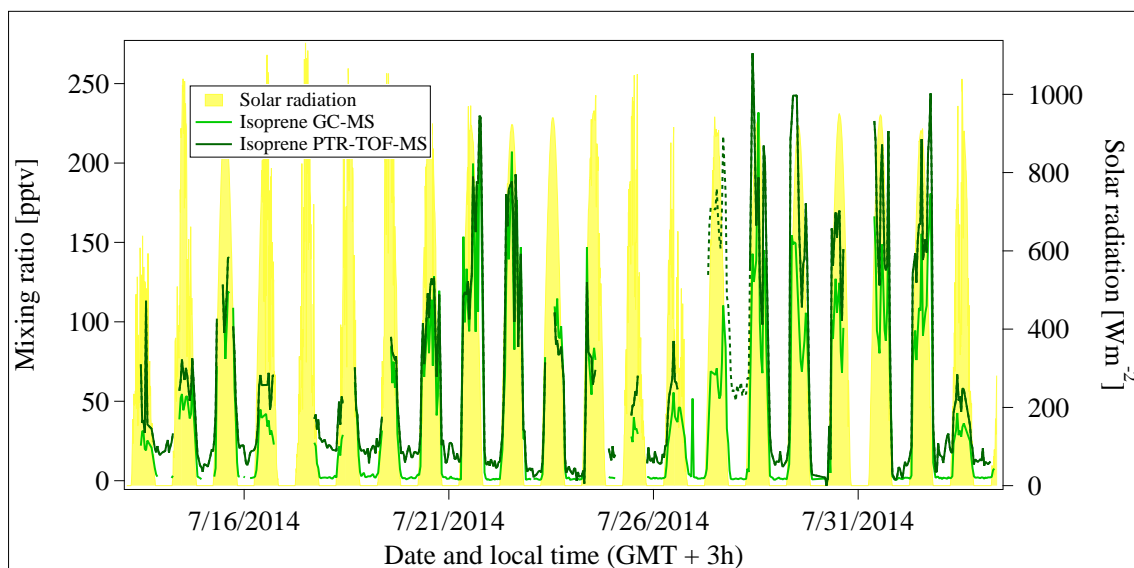


Figure 3. Time traces of isoprene in pptv measured by GC-MS and PTR-TOF-MS as well as solar radiation in Wm^{-2} . The PTR-TOF-MS data with a time resolution of 1 min were merged on the 20 minute sampling time of the GC-MS. Solar radiation is shown in a 10 min time resolution. The dashed line marks a possible contamination in the PTR-TOF-MS data.

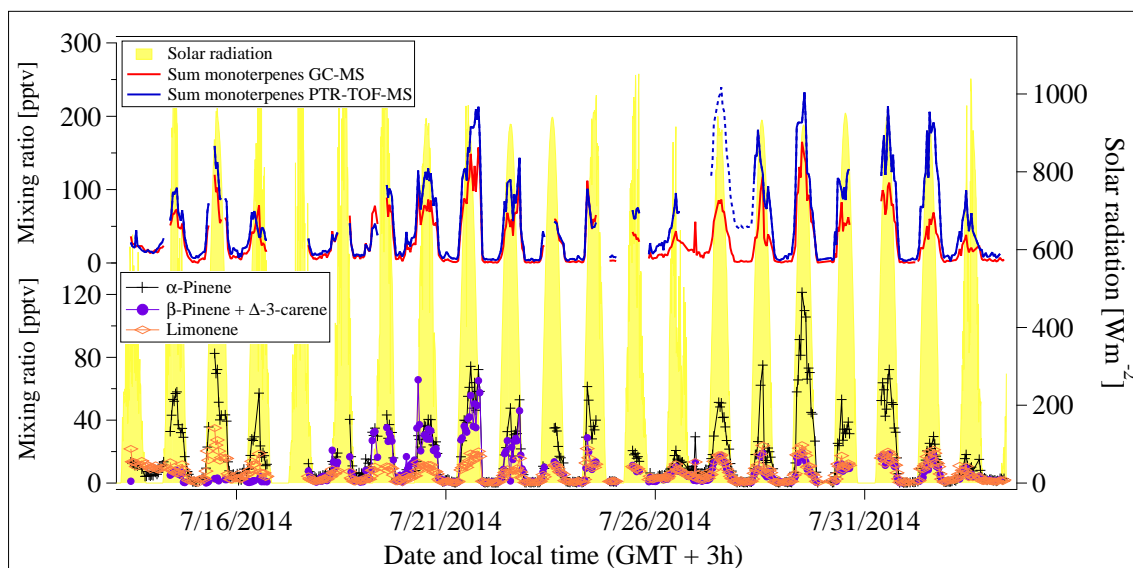


Figure 4. Time traces of different monoterpenes in pptv as well as solar radiation in Wm^{-2} . The PTR-TOF-MS data with a time resolution of 1 min were merged on the 20 minute sampling time of the GC-MS. Solar radiation is shown in a 10 min time resolution. The upper part shows the sum of the monoterpenes measured by GC-MS and PTR-TOF-MS, the lower part displays individual monoterpenes measured by GC-MS, only. The dashed line marks a possible contamination in the PTR-TOF-MS data.

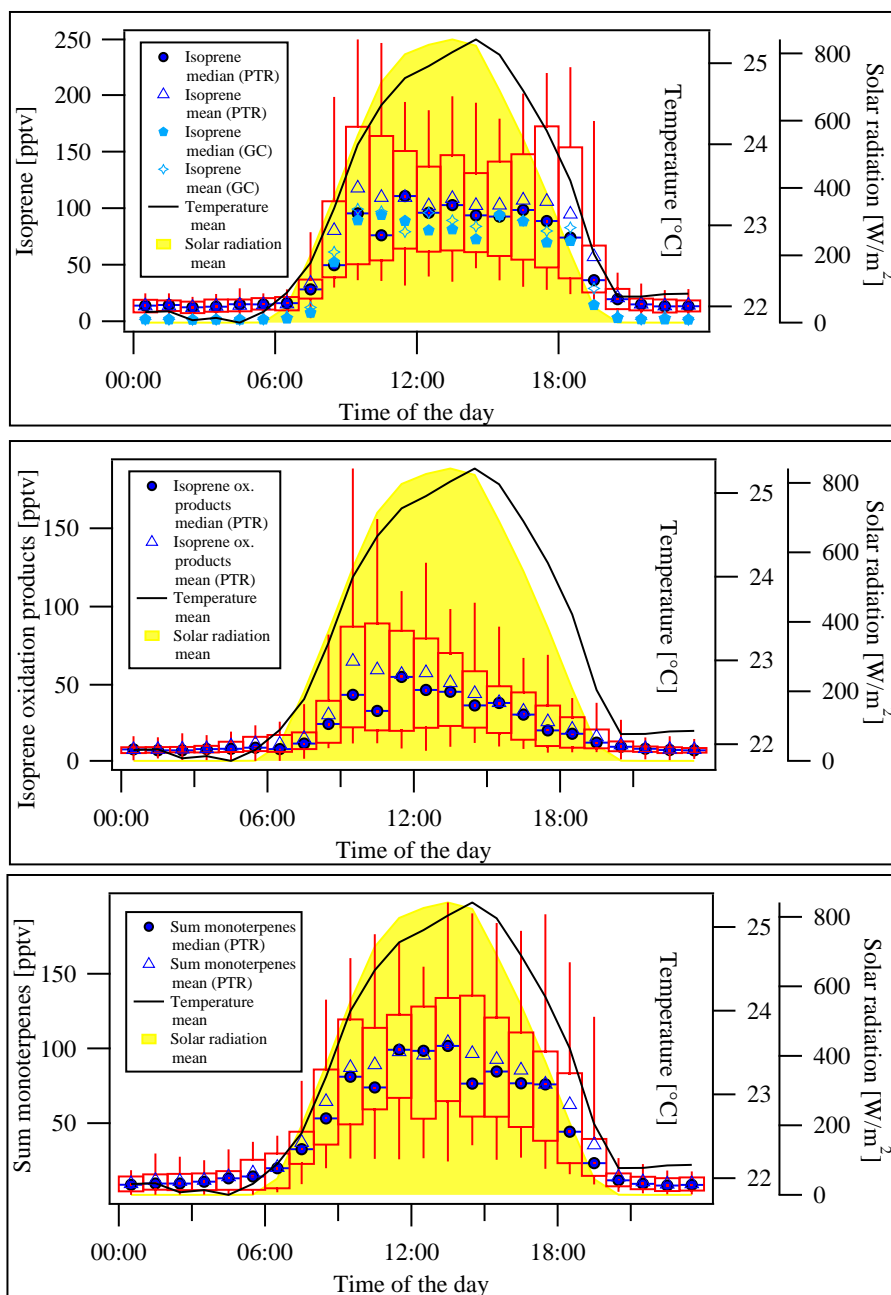


Figure 5. Box and whiskers plots of isoprene, the oxidations products of isoprene and the sum of monoterpenes for the whole campaign with a 1 h time resolution as measured by the PTR-TOF-MS. For comparison the median and mean isoprene values measured by GC-MS were added in the upper panel. To calculate the boxplots PTR-TOF-MS data with a time resolution of 10 min and GC-MS data with a 45 min time resolution (20 min sampling time) were used. The contaminations in isoprene and the monoterpenes determined by comparing GC-MS and PTR-TOF-MS data were cut. The box contains 50 % of the data. 25 % of the data lie below the lower end of the box, 75 % below the upper end. The whiskers present the 5–95 % range of the data.

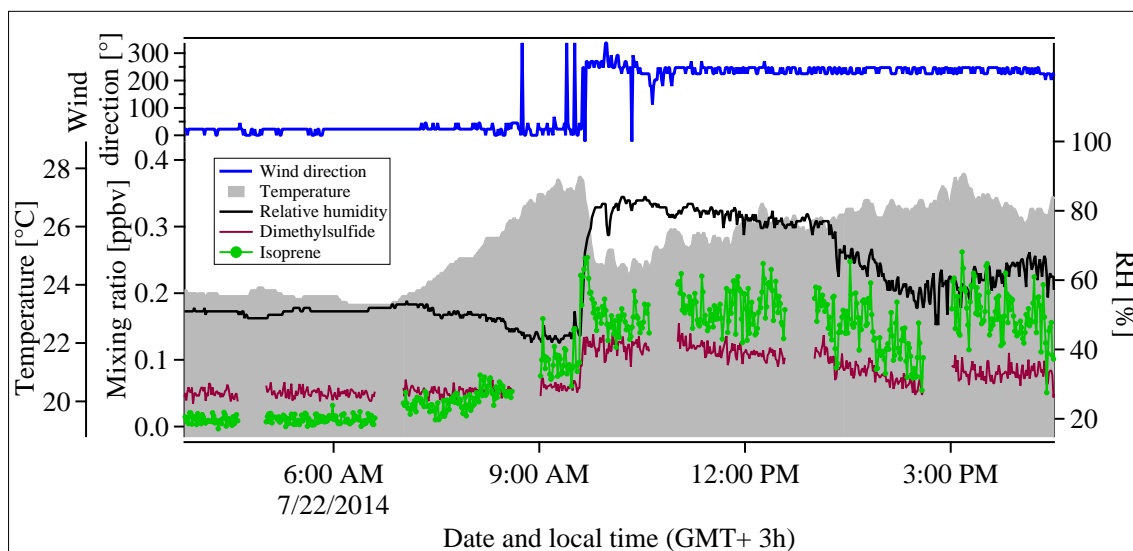


Figure 6. Mixing ratios of isoprene and DMS in ppbv as well as wind direction in $^{\circ}$, temperature in $^{\circ}\text{C}$ and relative humidity in % as a function of time with a 1 minute time resolution.

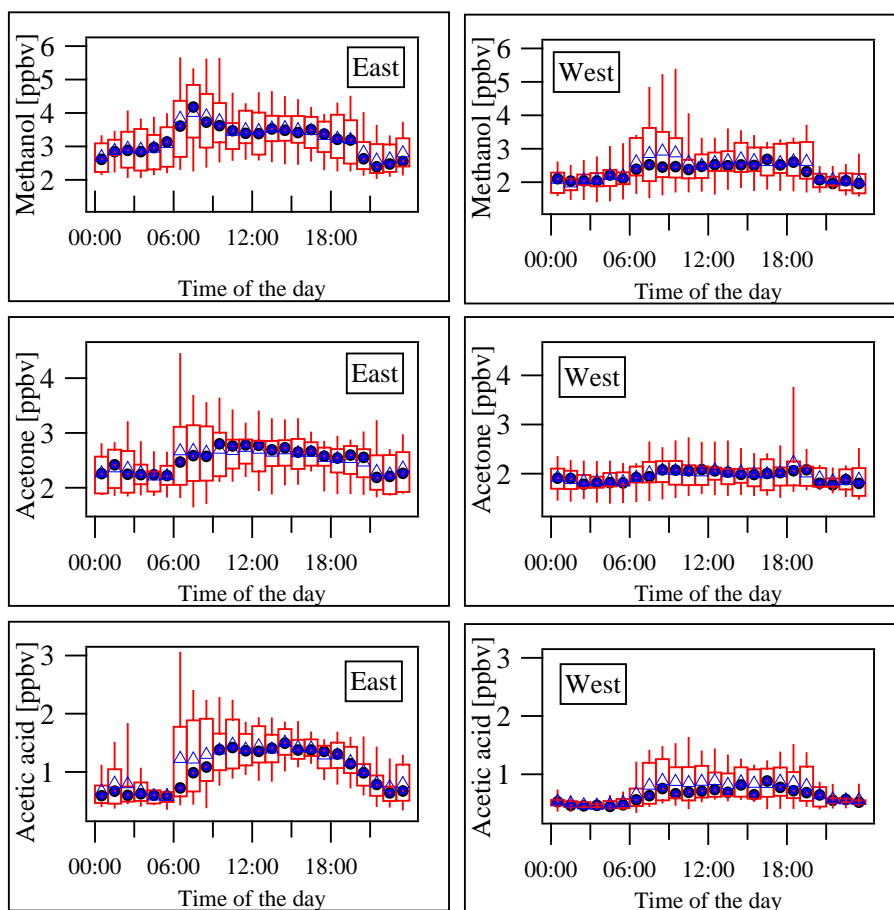


Figure 7. Box and whiskers plot of acetone, methanol and acetic acid when the site was within the PBL. The triangles refer to mean and the circles to median values. The box contains 50 % of the data. 25 % of the data lie below the lower end of the box, 75 % below the upper end. The whiskers present the 5–95 % range of the data.

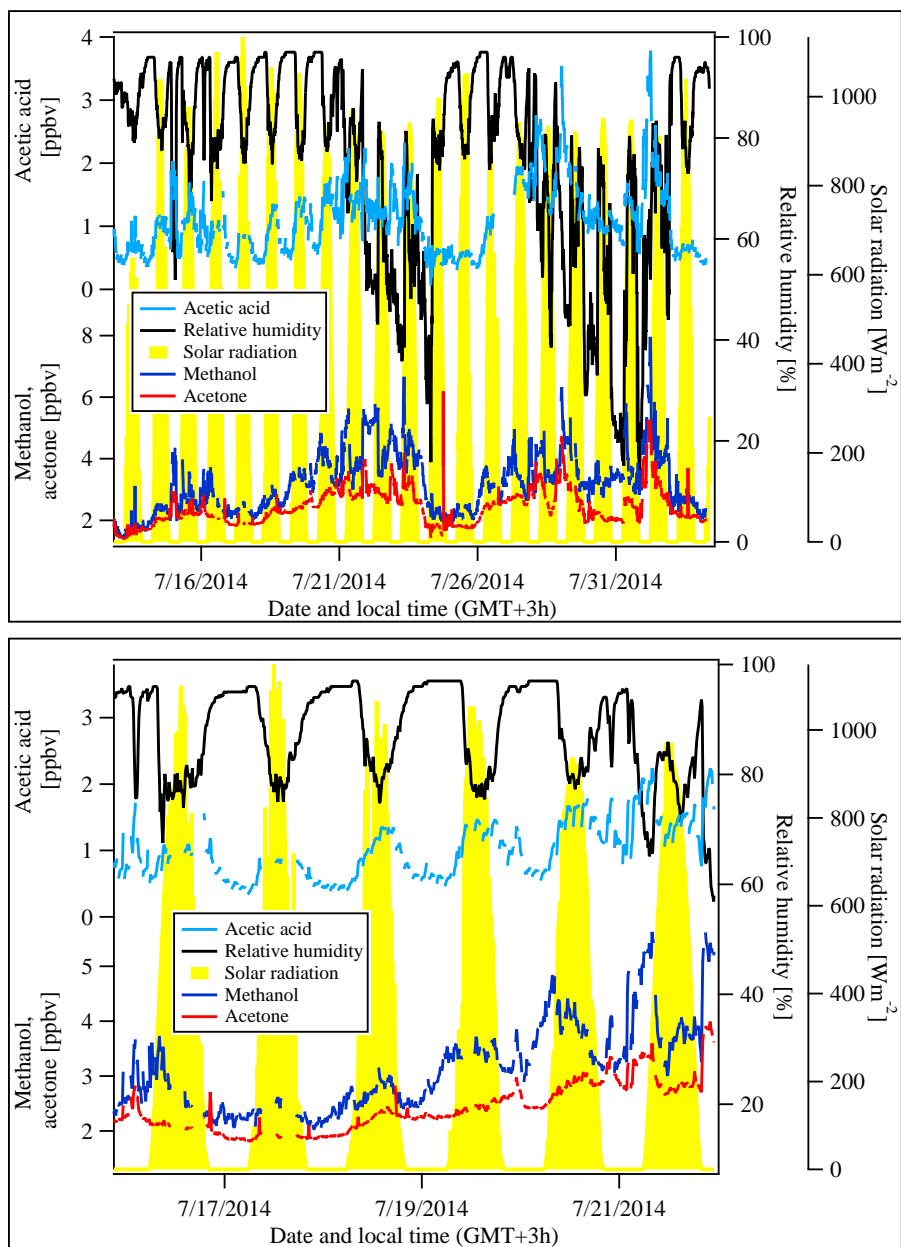


Figure 8. Mixing ratios of acetic acid, acetone and methanol in ppbv, relative humidity in % and solar radiation in Wm^{-2} (10 min mean values) as a function of time. The lower panel is a zoom in from 16 to 21 July.

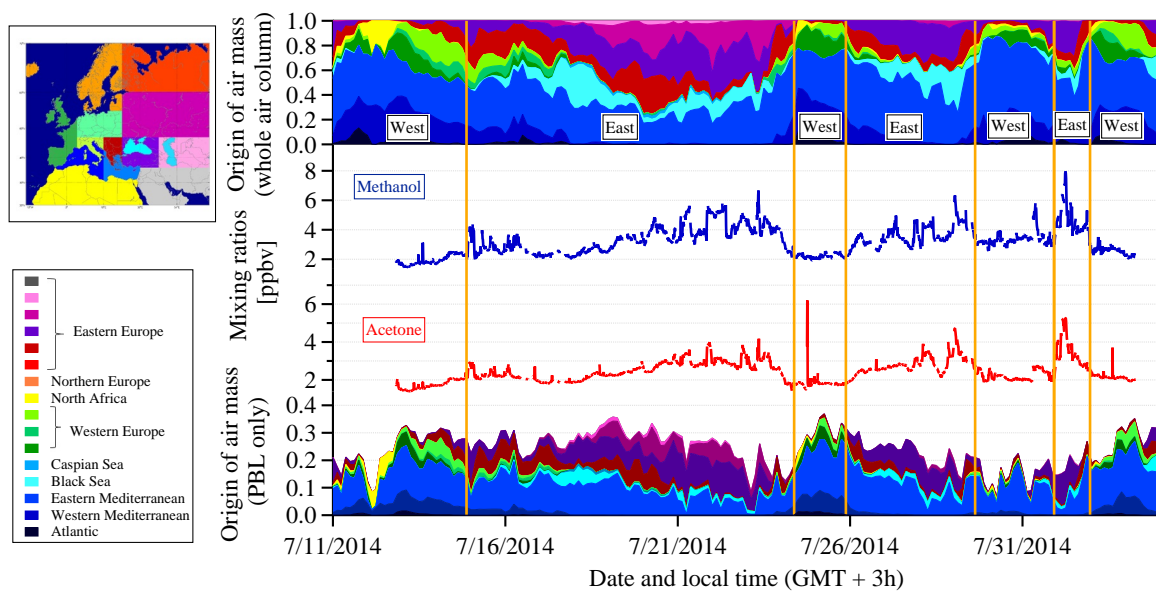


Figure 9. Allocation of Europe into specific regions (upper left panel) as well as traces of methanol and acetone in ppbv (10 min mean values) and modeled data of the area of influence, given in fractions of 1. The upper part of the right panel refers to the whole air column, while the lower part of the right panel represents the PBL, only.

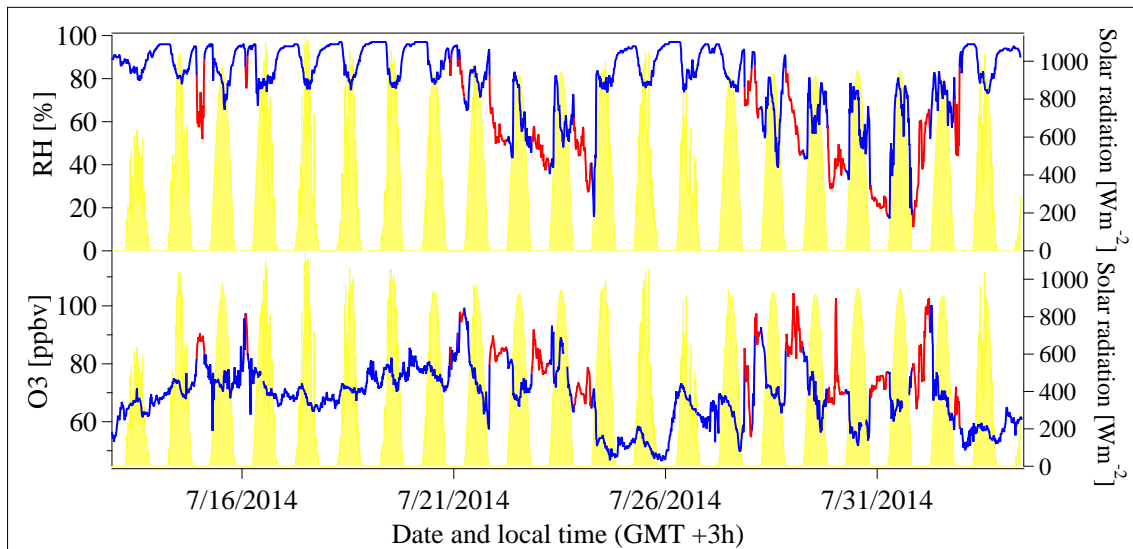


Figure 10. Ozone in ppbv, relative humidity in % and solar radiation in Wm^{-2} (10 min mean values). The red data points are influenced by air masses from the residual layer/free troposphere.

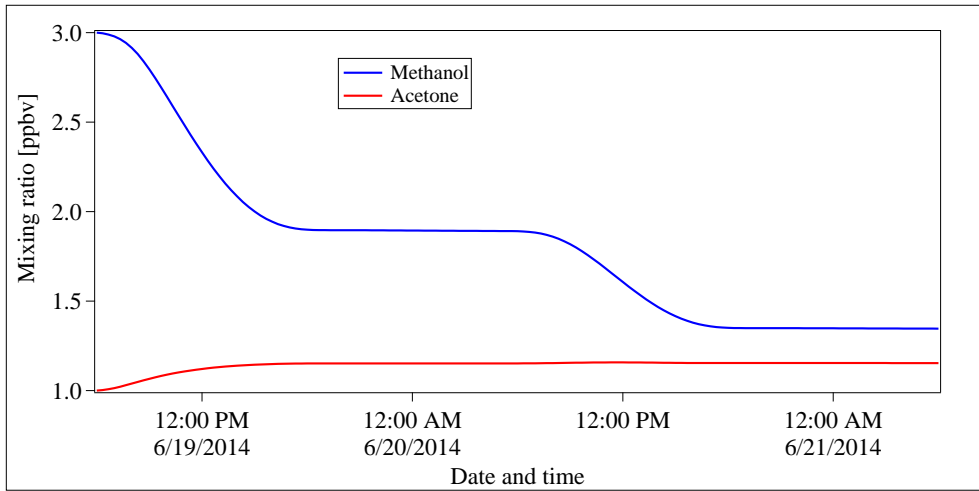


Figure 11. Modeled mixing ratios of methanol and acetone in ppbv over the period of 48 h starting at 6 am. Initial values originate from the MOM chemistry in the global model EMAC (Jöckel et al., 2016).

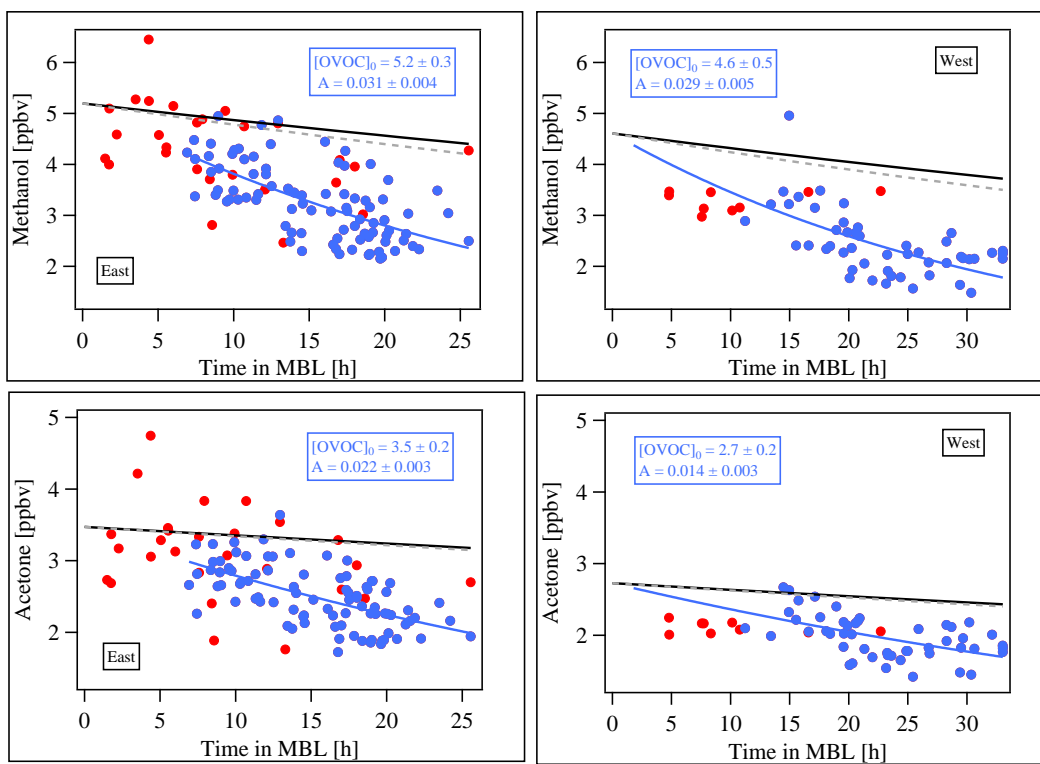


Figure 12. Data of acetone and methanol separated by eastern and western air masses, plotted against the time in the MBL. The data measured within the PBL (marked in blue) were fitted using an exponential fit algorithm (blue line). The black lines refer to calculated losses using equation 4 and the dry deposition velocities from the EMAC model. The gray dashed line was calculated using a 28.5% higher OH concentration. The red marks represent data points measured when the site was within the residual layer/free troposphere. These were excluded for the calculation of the exponential fit. $[OVOC]_0$ and A refer to equation 3 and are given in units of ppbv and h^{-1} , respectively.