

Special Issue: Ribosomes & Translation

Review

Regulation of Mammalian Mitochondrial Gene Expression: Recent Advances

Sarah F. Pearce,¹ Pedro Rebelo-Guiomar,^{1,2} Aaron R. D'Souza,¹ Christopher A. Powell,¹ Lindsey Van Haute,¹ and Michal Minczuk^{1,*,@}

Perturbation of mitochondrial DNA (mtDNA) gene expression can lead to human pathologies. Therefore, a greater appreciation of the basic mechanisms of mitochondrial gene expression is desirable to understand the pathophysiology of associated disorders. Although the purpose of the mitochondrial gene expression machinery is to provide only 13 proteins of the oxidative phosphorylation (OxPhos) system, recent studies have revealed its remarkable and unexpected complexity. We review here the latest breakthroughs in our understanding of the post-transcriptional processes of mitochondrial gene expression, focusing on advances in analyzing the mitochondrial epitranscriptome, the role of mitochondrial RNA granules (MRGs), the benefits of recently obtained structures of the mitochondrial ribosome, and the coordination of mitochondrial and cytosolic translation to orchestrate the biogenesis of OxPhos complexes.

Mitochondria and Their Genes

Mitochondria are dynamic organelles that are present in almost all eukaryotic cells and play a crucial role in several cellular pathways. Their most recognizable role is providing the cell with energy in the form of ATP via OxPhos. However, many other functions have been assigned to mitochondria, including the integration of metabolic pathways (such as the biosyntheses of heme, iron–sulfur clusters, and nucleotides), apoptosis, and reactive oxidative species (ROS) signaling.

The endosymbiotic theory proposes that mitochondria originated as free-living Alphaproteobacteria that were internalized by a pre-eukaryotic host cell, leading to the formation of the modern eukaryotic cell. In the course of evolution, the genome of the original alphaproteobacterial symbiont has undergone extensive reduction. The majority of its genes have either been lost, owing to redundancy, or transferred to the host nuclear genome. Furthermore, mitochondria have lost autonomy over their genome maintenance and expression to the host cell. Nonetheless, in almost all cases, eukaryotic mitochondria retain a minimal genome, of variable size and gene content, that is present in many copies within their matrix.

Human mitochondrial DNA (mtDNA) is a circular molecule of ~16.5 kb which encodes a small subset of the structural polypeptide components required for OxPhos. These mRNAs are

Trends

The genetic system required for mitochondrial gene expression is housed within the mitochondrial matrix, with all the necessary RNAs being provided by transcription of the mtDNA itself.

Our understanding of the extent and nature of post-transcriptional modifications of mtRNA, the epitranscriptome, is rapidly expanding. Several required nucleus-encoded enzymes have recently been identified.

mtRNA maturation factors localize in distinct foci, termed mtRNA granules, with newly transcribed RNA. These foci may allow spatiotemporal control of mtRNA processing.

Recent high-resolution structures obtained via cryo-electron microscopy have rapidly advanced our understanding of the specialized adaptations of the mitochondrial ribosome.

Production of respiratory complexes requires tight coordination between the cytoplasmic and mitochondrial translation systems.

¹Mitochondrial Genetics, Medical Research Council (MRC) Mitochondrial Biology Unit, Hills Road, Cambridge CB2 0XY, UK

²Graduate Program in Areas of Basic and Applied Biology (GABBA), University of Porto, Porto, Portugal

*Correspondence: michal.minczuk@mrc-mbu.cam.ac.uk (M. Minczuk).

@Twitter: Twitter: @mito_gene.

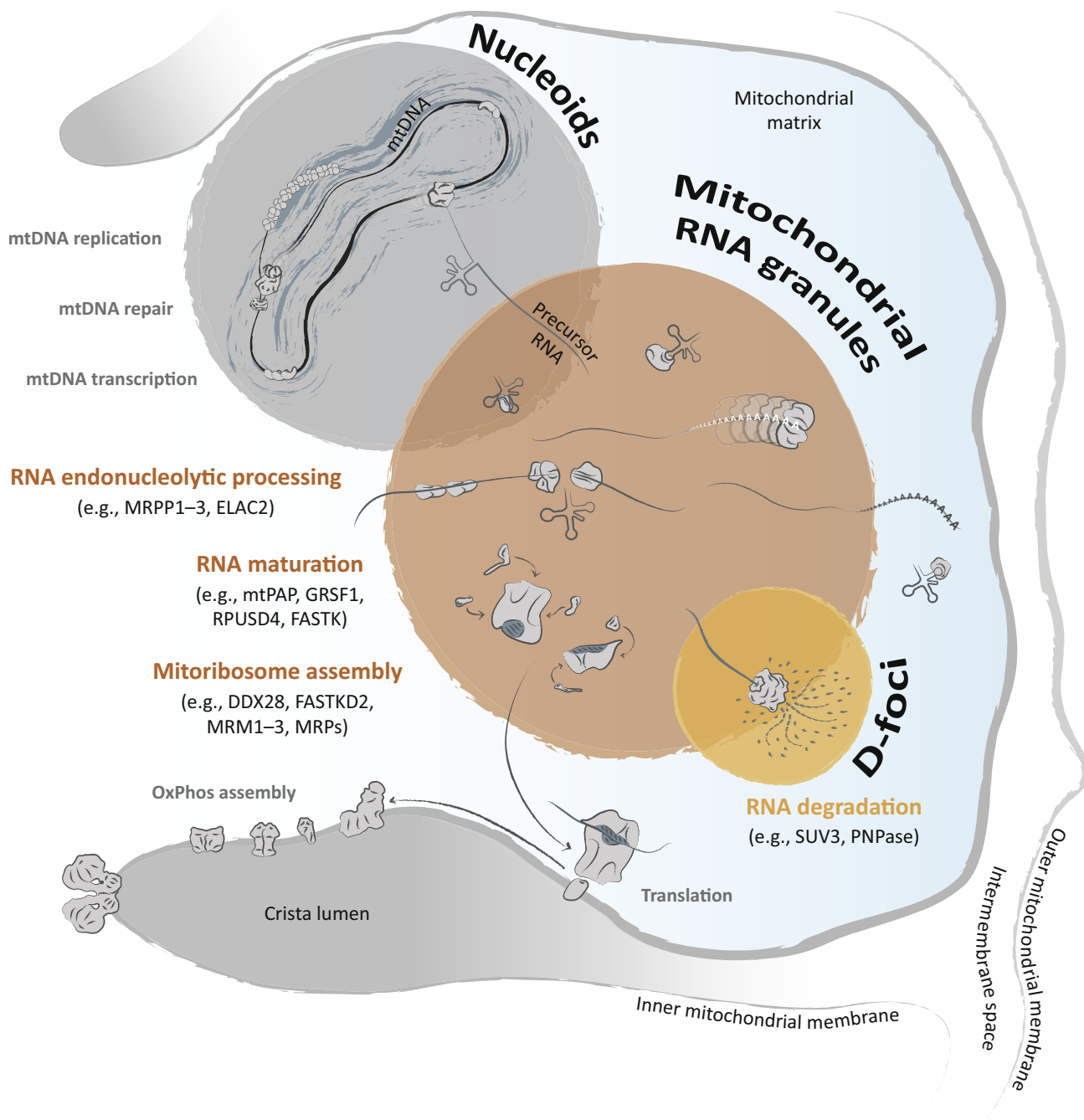
transcribed and then translated within the mitochondrial matrix by a dedicated, unique, and highly specialized machinery. The RNA components of the mitochondrial gene expression system, two mitochondrial ribosomal RNAs (mt-rRNAs) and 22 mt-tRNAs, are also encoded by mtDNA, whereas all other protein components are encoded by nuclear genes and imported into mitochondria from the cytosol. Based on published research [1,2] and our unpublished data, we estimate that 250–300 nucleus-encoded proteins are dedicated to serve mitochondrial gene expression. This includes RNA polymerase and transcription factors, endonucleases for RNA precursor processing, aminoacyl-tRNA synthetases, RNA-modifying enzymes, the structural components and biogenesis factors for the mitochondrial ribosome, translation factors, and other auxiliary factors.

Many mutations in mtDNA that affect the expression of mitochondria-encoded OxPhos components are associated with human pathologies, collectively known as mitochondrial disease. Recent growing evidence also suggests that defects in the nuclear genes involved in mitochondrial gene expression are also one of the major cause of human mitochondrial disease [3–5]. However, establishing the molecular details of how these defects contribute to pathogenicity and patient phenotypes constitutes a major challenge.

Although mitochondrial gene expression requires a series of linked processes encompassing mtDNA repair, replication, transcription (reviewed in [6,7]), and mtRNA maturation (reviewed in [8]) through to translation (reviewed in [9]) and respiratory complex assembly (reviewed in [10]), this article will focus in particular on the most recent advances in our understanding of the post-transcriptional processes of mtDNA gene expression (Figure 1). In particular, we outline the recent identification of novel nucleus-encoded factors required for modification or maturation of mtRNAs, the characterization of mtRNA granules (MRGs) as sites for organization of mtRNA processing, our improved understanding of the structure and composition of the mammalian mitochondrial ribosome, and of the coordination required for concerted nuclear and mitochondrial gene expression.

The Mitochondrial Epitranscriptome: Chemical RNA Modification for Gene Regulation

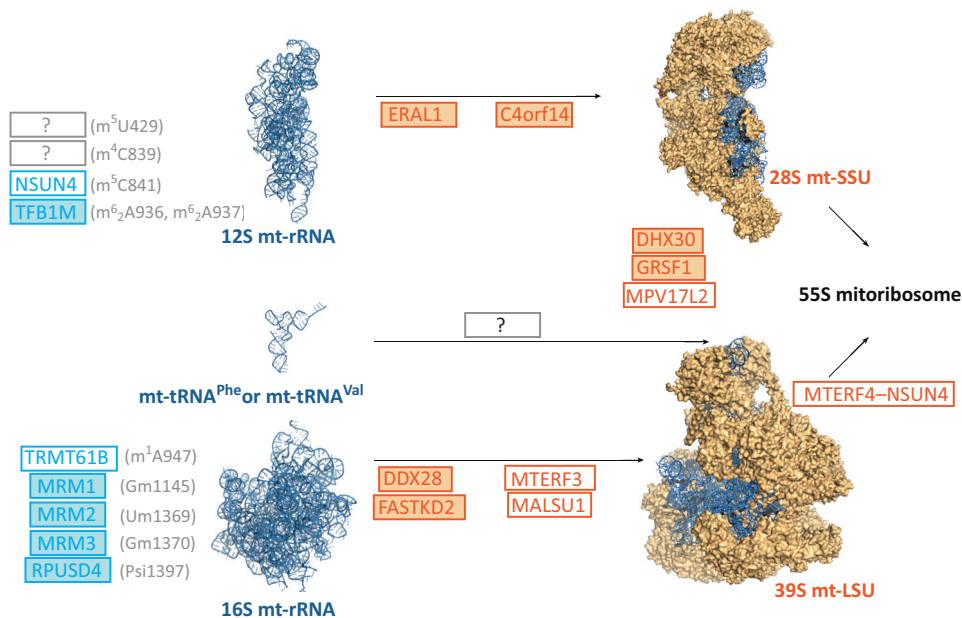
Control of the transcriptome in any biological system requires numerous post-transcriptional RNA modifications. In line with this, transcripts released from polycistronic mtRNA precursors are subject to enzymatic nucleotide modifications in mammalian mitochondria (Box 1). Early comprehensive biochemical work by Dubin *et al.* using hamster RNA identified a set of nine well-conserved chemical modifications to the small (12S) and the large (16S) mt-rRNAs (Figure 2) [104–107]. Most of these modifications have been confirmed to be present in the mt-rRNA of humans and other mammals, and several factors responsible for introducing these modifications have been identified [11–14]. In 12S mt-rRNA, TFB1M is responsible for nucleobase dimethylation of adenines A936 and A937 [13,15], whereas NSUN4 methylates cytidine at position 841 (human numbering) [14]. A group of closely related putative 2'-O-ribose methyltransferases (MRM1, MRM2/FtsJ2, and MRM3/RNMTL1) have been shown to be involved in modification of three nucleotide positions of the peptidyl transferase center of 16S mt-rRNA [11,12] (Figure 2). Very recently, a 10th modification in mt-rRNA was identified (16S: m¹A947), initially by analyzing RNA–DNA differences (RDDs) in RNA-Seq experiments, followed by biochemical confirmation and identification of TRMT61B as the enzyme responsible [16]. A systematic survey has revealed that ~7% of all bovine mt-tRNA residues undergo post-transcriptional modification, with over 30 different modified mt-tRNA positions [17]. Several enzymes introducing these modifications have already been determined, but the list is far from complete ([18,19] for recent comprehensive reviews). The number of modified nucleotides in the mitochondrial non-coding RNA is generally greatly reduced compared to their cytoplasmic or bacterial counterparts [20]. For example, the bacterial large 23S rRNA



Trends in Biochemical Sciences

Figure 1. Mitochondrial Gene Maintenance and Expression: A Focus on Post-Transcriptional Processes. Proteins involved in mitochondrial gene maintenance and expression have been localized to focal nucleoprotein structures in the mitochondrial matrix. These foci can be classified according to their protein contents into nucleoids, which contain mitochondrial (mt)DNA and mitoribosome granules (MRGs, represented in dark orange). Nucleoids and MRGs are present in close spatial proximity in microscope analyses. Nucleoids contribute mainly to the maintenance of the genetic material of mitochondria and the synthesis of RNA. Characterization of MRGs revealed the presence of a panoply of enzyme classes that perform diverse tasks necessary for the post-transcriptional expression of mitochondrial genes, from RNA maturation to mitoribosome assembly. However, it is currently not clear if all post-transcriptional steps of mitochondrial gene expression

(Figure legend continued on the bottom of the next page.)



Trends in Biochemical Sciences

Figure 2. Known Players in Mammalian Mitochondrial Ribosomal Biogenesis. Following endonucleolytic cleavage of newly transcribed polycistronic mitochondrial RNA (mtRNA) transcripts, mitochondrial ribosomal RNAs (mt-rRNAs) must undergo a series of nucleotide modifications. There are five known modified residues in mammalian 12S mt-rRNA and five in 16S mt-rRNA. The exact residues and their modifications are indicated in brackets and relate to the position in human 12S or 16S mt-rRNA. Shown in blue are the enzyme factors that are known to modify the indicated positions on mt-rRNAs. Several methyltransferases have been identified which modify mt-rRNAs, with NSUN4 and TFB1M modifying 12S and TRMT61B, and MRM1, MRM2, and MRM3 modifying 16S, at the indicated positions. In addition, pseudouridine synthase RPUSD4 has been identified as enzyme that is likely to provide the Psi1397 modification. In addition to nucleotide modifiers, several further protein factors are required for assembly of mitochondrial ribosomal proteins (MRPs) into the mitochondrial large ribosomal subunit (mt-LSU), the mitochondrial ribosomal small subunit (mt-SSU), or to aid in the formation of the complete monosome. These accessory factors are shown in orange. Although the enzymatic role of some of these factors have been predicted or can be inferred from their bacterial homologs, such as the putative RNA helicases MDDX28 and DHX30, or the proposed RNA chaperone ERAL1, the precise roles of many of the indicated accessory factors in mitoribosome biogenesis have yet to be determined. '?' indicates a known nucleotide modification or assembly step where the responsible factors are yet to be identified. Because MRPs have been found to copurify with the mitochondrial nucleoid and mtRNA granules (MRGs), early steps of mitoribosome assembly are likely to occur co-transcriptionally, in concert with mt-rRNA nucleotide modifications. The factors that have, thus far, been found to localize to MRGs are in solid color. Abbreviations: LSU, large subunit; PSI, pseudouridine; SSU, small subunit.

harbors 25 modifications (~1%), whereas only five modified nucleotides have been detected in human 16S mt-rRNA (~0.3%). This suggests that the few mtRNA modifications that have been retained are of high functional importance. One of the reasons for the lower level of modifications on mtRNA could be the limitation of the number of nuclear DNA (nDNA)-encoded protein factors that must be imported into mitochondria. Alternatively, it could have resulted from an inability of mitochondria to adapt the small nucleolar (sno) RNA-guided modification mechanisms that operate in the cytoplasmic ribosome [21]. However, with only a few modified nucleotides, mammalian mitochondria appear to have found alternative solutions for the proper

occur in MRGs. RNA degradation, the last stage of RNA metabolism, has also been postulated to occur in specialized foci, termed D-foci (shown in light orange), that contain the components of the mitochondrial degradosome, RNA helicase Suv3 and PNPase. A portion of D-foci have been found to colocalize with newly synthesized mtRNA, in a similar manner to MRGs, and may represent a subpopulation of MRGs participating in RNA processing or degradation mediated by the degradosome. Following maturation of all three classes of mtRNAs, mitoribosome assembly, and mt-tRNA aminoacylation, these molecules are now available for utilization in mitochondrial protein synthesis. Mitoribosomes synthesize 13 OxPhos proteins encoded by mt-mRNAs, and these subunits are co-translationally inserted into the inner mitochondrial membrane where they are incorporated into respiratory complexes together with nucleus-encoded OxPhos subunits. The stages of mitochondrial gene expression relevant for this review are indicated in orange.

Box 1. Key Steps in mtRNA Expression and Maturation

The human mitochondrial genome, or mtDNA, encodes 13 polypeptides, 22 mitochondrial transfer RNAs (mt-tRNAs), and two ribosomal RNAs (mt-rRNAs). mtDNA transcription, therefore, provides all the RNA components required for translation of its own messenger RNAs (mt-mRNAs). Genes are spread across both the heavy (H) and light (L) strands of mtDNA. Instead of initiating at individual gene-specific promoters, transcription of mammalian mtDNA initiates from single promoters for H- and L-strand transcription, and progresses around almost the entire length of the genome.

A single-subunit RNA polymerase, POLRMT, is responsible for mtDNA transcription, and provides both the promoter-binding specificity and catalytic polymerase activity [86,87]. In addition, mitochondrial transcription factor A (TFAM), mitochondrial transcription factor B2 (TFB2M), and mitochondrial transcription elongation factor (TEFM) are required for efficient transcription *in vivo* [88,89].

Because transcription results in polycistronic transcripts, the constituent mt-mRNAs, mt-tRNAs and mt-rRNAs must be released via endonucleolytic cleavage. In the majority of cases, human mt-mRNAs and mt-rRNAs are flanked at both the 5' and 3' ends by mt-tRNA genes, allowing their excision to release mt-mRNAs and mt-rRNAs via the 'tRNA punctuation model' [90]. This cleavage is performed by a mitochondria-specific, protein-only RNase P complex [91] and ELAC2 [92], which catalyze 5' and 3' endonucleolytic cleavage, respectively. There are, however, some exceptions where mt-tRNAs are not positioned at mt-mRNA junctions. Although the exact mechanisms for cleavage at such non-canonical junctions remain to be determined, recent studies have implicated FASTK, FASTKD4, and FASTKD5 as well as GRSF1 as factors involved in these processes [49,64,65,70].

Following endonucleolytic processing, individual mt-mRNA, mt-rRNA, and mt-tRNA transcripts undergo post-transcriptional modifications. Several nucleotides in mt-rRNAs are modified to facilitate mitoribosome biogenesis and function before incorporation into the mitoribosome proteins (Figure 2). The only confirmed modification of mt-mRNAs is the addition of a 3' poly(A) tail catalyzed by mitochondrial poly(A) polymerase (mtPAP) [93], with the exception of ND6 mt-mRNA which is not polyadenylated. Control of poly(A) tail length and RNA stability is achieved with the aid of the complex of LRRPPRC-SLIRP [94–96] and the PDE12 poly(A)-specific exoribonuclease [97].

Finally, mt-tRNAs undergo extensive post-transcriptional nucleotide modification, in addition to 3' CCA trinucleotide addition [18], before being aminoacylated with their cognate amino acid [98]. Following maturation of mt-RNAs and mitoribosomes, they are available for use in mitochondrial protein synthesis.

functioning of their tRNA and rRNA. This has been most strikingly demonstrated by the complete mapping of post-transcriptional modifications in the mt-tRNAs of *Bos taurus*, in which the very highly conserved m⁵U54 methylation is entirely absent [17]. The adaptive changes that have arisen to compensate for its loss, however, are currently unclear.

RNA Epigenetics: NSUN3 and ABH1 As New Players in Decoding Mitochondria-Specific Codons

One of the recently investigated unique features of mitochondrial gene expression concerns the post-transcriptional modification of mt-tRNA^{Met} and decoding of methionine codons. In the cytosol of eukaryotic cells there are two distinct types of tRNA^{Met} that are used for either translation initiation or elongation. However, as a consequence of the reductive evolution of mtDNA, metazoan mitochondrial transcriptomes contain a minimal set of tRNAs, where each mt-tRNA species usually decodes an increased number of codons. In line with this, human mtDNA contains only one gene encoding mitochondrial tRNA^{Met} that is used for both initiation and elongation stages of mitochondrial protein synthesis. However, in addition to decoding the universal AUG codons, this single mt-tRNA^{Met} also recognizes the unconventional AUA (which codes for isoleucine in the universal genetic code) during initiation and elongation [22,23]. In the human mitochondrial genome, 167 methionine residues are encoded by AUA, and only 40 use the standard AUG codon. Furthermore, mt-tRNA^{Met} can also decode AUU and AUC, but only as initiation codons (during elongation AUU and AUC are decoded as isoleucine, as in the standard genetic code). It has previously been shown *in vitro* that a 5-formyl modification of the cytosine residue in the wobble position of the anticodon (f⁵C34) in human mt-tRNA^{Met} allows decoding of AUG and the non-conventional AUN codons [23,24]. Even though mt-tRNA^{Met} f⁵C34 was first detected over 20 years ago [22], until recently the source of the formyl group and the enzyme(s) involved in generating this modification remained unknown.

Three independent studies have recently enabled identification of the sequential mechanism responsible for the f^5C34 modification of the wobble cytosine in mt-tRNA^{Met} [25–27]. Using a variety of different approaches, the three laboratories found that this nucleobase is initially modified with a methyl group (m^5C) that is subsequently oxidized to a formyl group, generating f^5C . The enzyme responsible for the methylation step has been identified as NSUN3, a mitochondria-targeted member of the Nol1/Nop2/Sun domain (NSUN) family of m^5C RNA methyltransferases. Inactivation of NSUN3 resulted not only in reduced levels of m^5C34 but also in decreased levels of f^5C34 . This observation proved that methylation constitutes an intermediate step in the pathway of formylation of the mt-tRNA^{Met} wobble cytosine. One of these three studies [25] has also identified the enzyme responsible for methyl- to formylcytosine conversion as ABH1 (also known as ALKBH1). ABH1 belongs to a family of Fe^{2+} / α -ketoglutarate-dependent dioxygenases. Inactivation of either NSUN3 or ABH1 led to defects in mitochondrial translation. However, it is currently not clear whether the entire functional pool of mt-tRNA^{Met} is formylated at C34 *in vivo*, with the methylated form being merely an intermediate, or whether differentially modified mt-tRNA^{Met} pools are present in mitochondria. Because α -ketoglutarate is an important intermediate of the Krebs cycle, the levels of α -ketoglutarate could potentially influence methyl to formylcytosine conversion by ABH1 and, as such, regulate the m^5C34/f^5C34 ratio. It will be fascinating, therefore, to establish if alterations to the relative abundance of different RNA modifications could potentially participate in the regulation of mitochondrial translation as a response to changes in the metabolic state of the cell.

RNA Pseudouridylation: A New Twist

Pseudouridine (Ψ), the most common modification in non-coding RNA, is a structural isomer of uridine and the only mass-silent RNA modification identified so far [28]. As do their cytoplasmic counterparts, mt-tRNAs contain pseudouridylated residues [17]. It has also been determined that mammalian 16S mt-rRNA contains at least one Ψ [29] (Figure 2). The roles of individual Ψ s, the enzymes responsible for these modifications, and how they influence the structure and function of different mtRNA classes remain to be clarified. Of several conserved human Ψ synthases, only PUS1 has previously been characterized as an mt-tRNA modifying enzyme (positions 27 and 28) and has been linked to human disease [30]. However, a recent genome-wide CRISPR ‘death screen’ identified three previously uncharacterized, putative Ψ synthases (RPUSD3, RPUSD4, and TRUB2) as being essential for OxPhos [31]. Depletion of any of these genes results in decreased levels of 16S mt-rRNA and perturbs mitochondrial translation. Very recently, these three putative mitochondrial Ψ synthases were shown to localize to MRGs, the concept of which is discussed in greater detail below [32,33]. Furthermore, RPUSD4 is probably the enzyme responsible for pseudouridylation of position 1397 of 16S mt-rRNA [32]. This is consistent with a further study which demonstrated instability of 16S mt-rRNA upon RPUSD4 silencing [33]. However, further research will be necessary to determine the exact role of 16S mt-rRNA pseudouridylation, especially in the context of mitochondrial ribosome biogenesis (Figure 2 and see below).

A further high-throughput study that analyzed transcriptome-wide occurrence of Ψ s indicated that, in addition to non-coding RNA, mt-mRNAs also contain this modification [34]. Although a more targeted validation of this finding is required, mt-mRNA pseudouridylation could emerge as an important regulatory mechanism; for example, by rewiring the genetic code via non-canonical base pairing in the ribosome decoding center. Characterizing the landscape, enzymology, and potential dynamic changes in pseudouridylation of the mitochondrial transcriptome is likely to be a subject of intense study in the near future.

As we describe above, the field has experienced rapid expansion in our knowledge of the modifications of mtRNAs, and of the nuclear factors that are responsible for these modifications

(e.g., NSUN3, ALKBH1, Ψ synthases). However, further work will be necessary to fully characterize the mitochondrial epitranscriptome and the functional role for each RNA modification in the context of mt-tRNA biology and mitoribosome biogenesis.

Mitoribosome Structure and Biogenesis

Recent developments in cryo-electron microscopy (cryo-EM) have transformed our access to 3D structures of protein complexes that have thus far been refractory to other methods. The near-atomic resolution structure of mammalian mitochondrial ribosomes (mitoribosomes) has recently been obtained, revealing several unexpected features [35–38] (Box 2).

Plasticity of Structural RNA Selection by the Mammalian Mitoribosome

Mammalian mitoribosomes differ from other ribosomes by the unexpected integration of a mitochondria-encoded tRNA as a structural element of the central protuberance (CP) region of the large subunit (mt-LSU). Interestingly, different mt-tRNAs have been reported to be present in human (mt-tRNA^{Val}) and porcine (mt-tRNA^{Phe}) mitoribosomes [35,36]. In other ribosomes, the CP region is conventionally occupied by 5S rRNA. In addition, the mammalian mitoribosome was initially thought to contain cytosolic 5S rRNA based on co-immunoprecipitation of this RNA molecule with mt-LSU [39]. Therefore, the recent cryo-EM structural studies have

Box 2. The Mammalian Mitochondrial Ribosome

The mammalian mitochondrial ribosome (mitoribosome) is specialized for the translation of the 13 mitochondria-encoded components of the OxPhos system. The two subunits of the mitoribosome, the 28S small subunit (mt-SSU) and the 39S large subunit (mt-LSU), comprise a catalytic RNA – 12S mt-rRNA and 16S mt-rRNA, respectively – encased in protein subunits (MRPs).

The co-evolution of the mammalian mitoribosome along with the highly hydrophobic OxPhos subunits has resulted in drastic changes to the composition and architecture of the mitoribosome complex. Compared to bacterial, eukaryotic cytoplasmic ribosomes, and yeast mitoribosomes, the RNA component of the mammalian mitoribosome is about half the length, and this may be a consequence of reductive evolution of the mitochondrial genome [99]. To compensate for the severe reduction in rRNA size, the mitoribosome has recruited more protein subunits to stabilize the structure and compensate for loss of functional domains [37,38]. In contrast to the 55 ribosomal proteins in the bacterial ribosome, and the 70 proteins in the yeast mitoribosome, the mammalian mitoribosome consists of 80 protein subunits. In addition, many RNA–RNA interactions which bridge between the large and small subunits in the bacterial and eukaryotic cytoplasmic ribosomes have been replaced by protein–protein and protein–RNA bridges in the mammalian mitoribosome [37,38].

The remodeling of the mitoribosome is particularly noticeable in the central protuberance (CP) region, which in bacterial, archaeal, and eukaryotic cytoplasmic ribosomes contains a 5S rRNA component. In the mammalian mitoribosome this has been replaced by an mtDNA-encoded tRNA. The identity of the tRNA assembled into the mitoribosomes varies depending on the organism. Both mt-tRNA^{Val} and mt-tRNA^{Phe} have been shown to be present in the CP [35,36,100]. Both these mt-tRNAs are located adjacent to mt-rRNAs in the human mitochondrial genome, allowing co-transcriptional maturation and assembly into the mitoribosome. Moreover, mammalian mitoribosomes have acquired a GTP-hydrolyzing protein (mS29) and a pentatricopeptide repeat (PPR) protein (mS39), the functions of which are not fully understood [9].

The polypeptide exit tunnel of the mitoribosome has also become specialized for the translation of hydrophobic membrane proteins. The exit tunnel of the mitoribosome is positioned such that nascent polypeptide can be cotranslationally inserted into the membrane and the large subunit of the translating monosome is attached to the membrane by the C-terminal helix of mL45. Moreover, residues lining the tunnel surface are hydrophobic to regulate the rate at which of the newly synthesized polypeptide exits from the mitoribosome [35,36].

Although the recently resolved cryo-EM structures have rapidly accelerated our understanding of the structural composition of the mitoribosome, they do have some limitations, warranting further study. During translation, mammalian mitoribosomes must be localized to the inner mitochondrial membrane, in association with the protein machinery required for membrane insertion of elongating polypeptides, which remains to be fully characterized. Therefore, further structural studies to address the exact nature of the interaction of actively translating mitoribosomes with the inner mitochondrial membrane would be highly advantageous.

resolved the longstanding conundrum of whether or not mammalian mitoribosomes contain a 5S rRNA. These studies have recently been extended to show that mammalian species in general can incorporate different mt-tRNAs into the mt-LSU [40]. However, of 22 mitochondria-encoded tRNAs, only mt-tRNA^{Val} and mt-tRNA^{Phe} were found to be incorporated into the mt-LSU, and there was no evidence for tissue-specificity. Most astonishingly, however, we revealed the plasticity of this arrangement by analyzing a patient-derived cell line harboring a mutation in mt-tRNA^{Val}, which results in a greatly reduced global steady-state level of mt-tRNA^{Val}. Under these conditions of limiting availability of mt-tRNA^{Val}, the human mitoribosome was able to switch from incorporating mt-tRNA^{Val} to mt-tRNA^{Phe}. Moreover, human mitoribosomes containing mt-tRNA^{Phe} were shown to be translationally competent [40].

The substitution of 5S by a mitochondria-encoded tRNA in the mitoribosome could stem from the inability of the mammalian organelle to efficiently import RNA from the cytoplasm (discussed in [41]). The selection of mt-tRNA^{Val} and mt-tRNA^{Phe} as structural components of the mt-LSU is most likely related to the position of these genes in the mammalian mitochondrial genome. In prokaryotes, the 5S rRNA is part of a polycistronic transcript that also contains the small and large rRNAs. An analogous gene arrangement is found in most mammalian mitochondrial genomes, with mt-tRNA^{Val} and mt-tRNA^{Phe} flanking the two mt-rRNA genes. This gene arrangement in mammalian mtDNA confers a spatial advantage and stoichiometric availability of the mt-tRNA and mt-rRNA species for incorporation into the mt-LSU. However, the reason why different mt-tRNAs are found in mitoribosomes of closely related mammalian species remains to be addressed. In addition, it would be interesting to investigate the incorporation of structural RNAs into mitoribosomes in species where the arrangement of mt-rRNA and mt-tRNA on mtDNA is different from that of mammals.

Building Mitoribosomes: New Players in the Assembly Pathway

In all systems studied thus far, ribosome biogenesis entails a complex, multistep, and tightly regulated pathway. In budding yeast, approximately 200 proteins and 70 snoRNAs have been reported to participate in the production of the cytoplasmic ribosome. Many of these proteins directly facilitate the assembly or transport of pre-ribosomal complexes from the nucleolus to the cytoplasm [42]. In bacteria, the absence of cellular compartmentalization reduces the number of proteins required for ribosome synthesis. Nonetheless, approximately 80 assembly factors, rRNA modifiers, and rRNA processing enzymes are involved in the biosynthesis of the bacterial ribosome [43]. In contrast to the relatively well-characterized ribosomal assembly pathways in bacteria and in eukaryotic cytoplasm, studies addressing the biogenesis of the mammalian mitoribosome have only recently commenced and are in their infancy [44]. We summarize below the recently discovered factors associated with the mitoribosome biogenesis process and discuss how further studies of these factors could be useful in elucidating mitoribosome assembly.

Several protein factors have thus far been identified to play roles in the assembly of the small subunit of the mitoribosome (mt-SSU) (Figure 2). Two previously mentioned 12S mt-rRNA methyltransferases, NSUN4 and TFB1M, have been implicated in mt-SSU biogenesis. NSUN4 has been shown to have a dual function: although it is required for 12S methylation, NSUN4 additionally functions in complex with MTERF4 to play a role in regulating monosome assembly, presumably by binding to the mt-LSU and facilitating interaction with the mt-SSU [14,45]. Ablation of TFB1M causes a reduction in 12S mt-rRNA steady-state level, leading to a deficiency of assembled mt-SSU [13]. ERAL1, a homolog of the bacterial Era protein, is a member of the conserved family of GTP-binding proteins and has been suggested to function as an RNA chaperone that protects 12S mt-rRNA on the mt-SSU during assembly [46,47]. In addition, the C4orf14 (NOA1) GTPase interacts with the mt-SSU, and its knockdown leads to a defect in small subunit assembly [48].

Our knowledge about the factors required for the assembly of the mt-LSU has also rapidly expanded (Figure 2). In addition to the mt-SSU, methyltransferases have also been implicated in the biogenesis of the mt-LSU. Downregulation of MRM2 or MRM3 results either in diminished levels or altered sucrose-gradient sedimentation of the mt-LSU, respectively [12]. However, it is currently not clear whether the absence of methyltransferase activity or simply the lack of the protein results in the aberrant production of mt-LSU. Two RNA-binding proteins, MTERF3 and FASTKD2, and a putative RNA helicase, DDX28, have been implicated in the assembly of the mt-LSU, although the molecular mechanisms are not understood [49–52]. A more pleiotropic effect on the mitoribosome was observed when the expression of RNA-binding protein GRSF1 or the putative helicase DHX30 was suppressed – this resulted in the accumulation of mt-SSU subassemblies and a decrease in mt-LSU and monosome content [49]. Similarly, a MPV17 protein family member, MPV17L2, was found to associate with the mt-LSU, but its knockdown led to instability of both the mt-LSU and mt-SSU [53]. Finally, MALSU1, a member of the ribosome silencing factor (RsfS) family [54], has been involved in assembly and/or stability of the mt-LSU [55–57]. It remains to be determined whether MALSU1, similarly to its bacterial homolog, exhibits ribosome silencing activity, preventing premature association of the small and large subunits to form the monosome.

Current knowledge of the functional role of the identified mitoribosome biogenesis factors does not allow their confident assignment to particular steps in the assembly process. Without further studies, it is difficult to draw any meaningful parallels in the assembly process between the mitoribosome and its cytoplasmic or bacterial counterparts. However, a growing inventory of mitochondrial factors involved in mitoribosome production is expected to contribute to future investigations on the molecular details of its sequential assembly. Recent application of affinity purification of pre-ribosomal particles using an epitope-tagged assembly factor, combined with subsequent cryo-EM analysis, has enabled snapshots of compositionally and structurally different intermediates of budding yeast cytoplasmic ribosome biogenesis to be acquired, providing essential mechanistic details [58]. An analogous approach could be adapted for selected mitochondrial factor(s) that have already been shown to participate in mitoribosome production. Further, inactivation of specific mitoribosomal biogenesis factors can result in the accumulation of on-pathway intermediates which, again, could be analyzed by cryo-EM or proteomic profiling [59]. These approaches are likely to uncover novel assembly factors that remain attached to these incompletely assembled mitoribosomes, and could be helpful in building detailed assembly maps.

Regulation and Coordination of Mitochondrial Gene Expression

The processes by which the basic stages of gene expression are regulated in mammalian mitochondria to adapt to metabolic demand are still not well understood. Several recent studies have brought to light the previously unknown organization of newly synthesized mtRNAs into dynamic nucleoprotein structures, the MRGs (Box 3). These subcompartments may provide spatiotemporal regulatory function for mtRNA post-transcriptional processing, allowing mt-mRNAs, mt-tRNAs and mt-rRNAs to be matured fully before release for use in protein synthesis.

In addition, owing to the dual genetic origin of subunits of OxPhos complexes, there is a necessity for coordination of gene expression of both genomes. While this may be achieved through control of transcription and mtRNA maturation of both genomes, direct regulation of mitochondrial protein synthesis is emerging as another likely stage for ensuring correct production and assembly of OxPhos subunits. We discuss below recent breakthroughs in our understanding of how mitochondrial gene expression is coordinated.

mtRNA Granules: A Subcompartment for RNA Maturation and Ribosome Assembly

Since first being imaged via microscopy using fluorescent (DAPI, 4',6-diamidino-2-phenylindole) staining of DNA, mtDNA has been observed to be located in discrete punctae

Box 3. Mitochondrial RNA Granules (MRGs)

From their synthesis to degradation, mtRNAs undergo several transformation steps in which diverse molecular players are involved, all with the aim of enabling the faithful production of mtDNA-encoded proteins.

Maturation of mtRNAs comprises processes such as synthesis, cleavage of 5' and 3' ends, modification of key nucleotides, editing of 3' ends, decoding, and eventual degradation (Box 1). The enzymes which perform these tasks are not randomly distributed in the mitochondrial matrix but are enriched in punctate structures, or foci, providing dedicated centers that participate in different stages of mtRNA metabolism.

Studies on the localization of specific mitochondrial proteins, bromouridine (BrU) incorporation, and mtDNA immunostaining have enabled the identification and characterization of foci containing nascent transcripts, called MRGs. Although found in the vicinity of mtDNA-containing foci, they are structurally distinct from nucleoids [64,68]. Diverse classes of proteins are present in MRGs. The presence of enzymes involved in the processing of mtRNAs (GRSF1 [64,68], RNase P subunits [64], and mtPAP [69]) and the post-transcriptional nucleotide modification of non-coding mtRNAs (e.g., MRM2, MRM3 [67], TFB1M, PUS1 [49], and TRMT10C [100]) led to the conceptualization of MRGs as RNA maturation centers in mitochondria.

Furthermore, because mitoribosome assembly factors (e.g., MTERF3/MTERFD1, ERAL1, DDX28, and FASTK-family proteins [49,52]) (Figure 2) and integral mitoribosome components (i.e., mt-rRNAs and mitochondrial ribosome proteins [64]) are gathered in MRGs, they have been postulated to be involved in regulating mitochondrial translation.

The last stage in the life of mtRNAs has also been proposed to take place in dedicated foci, termed D-foci [66] for its principal component, the degradosome complex. The degradosome complex is formed by mitochondrial helicase Suv3 [101] and polynucleotide phosphorylase (PNPase) [102,103].

Although a proportion of identified D-foci also colocalize with newly synthesized RNA, similarly to MRGs, further investigation will be necessary to verify whether these foci form a subset of MRGs or are separate entities with a distinct composition and purpose.

throughout the mitochondrial network [60]. Immunostaining experiments indicated that a range of proteins, with roles associated with mtDNA maintenance (such as packaging and replication) and transcription of the mitochondrial genome, colocalize with these mtDNA foci [61]. Together with mtDNA, these associated proteins form a nucleoprotein complex known as the mitochondrial nucleoid (Figure 1). A recent study which sought to clarify their functional organization has suggested that nucleoids are almost exclusively comprised of a single copy of mtDNA, and the compacted nucleoid structure is achieved through an interaction with mitochondrial transcription factor A (TFAM) [62].

Newly transcribed mtRNAs were found in discrete foci situated in close proximity to mitochondrial nucleoids [63]. These foci, known as MRGs (Box 3), have been found to contain numerous proteins involved in post-transcriptional processing and regulation of mtRNA, as well as factors involved in mitoribosome assembly (Figure 2) [49,64–69]. By tracking the progress of nascent RNA transcripts through the incorporation of the uridine analog 5-bromouridine (BrU), together with the colocalization of protein factors for RNA processing [64,68] (Boxes 1,3), these foci have come to be recognized as compartmentalized centers for RNA processing. Newly identified RNA-binding proteins were found to localize to MRGs, whose function is crucial for the activities housed within them. G-rich RNA sequence binding factor 1 (GRSF1), for example, interacts with the RNase P complex, and its loss leads to aberrant mtRNA processing [64] and a mitochondrial translation defect [64,68]. More recently, systematic approaches towards the characterization of the MRG proteome has led to the identification of further proteins involved in post-transcriptional mtRNA metabolism, including Fas-activated serine/threonine kinase (FASTK) protein family members FASTK and FASTKD5 [49,65]. A further FASTK family member, FASTKD4, has also been implicated in mt-RNA processing, although this polypeptide has not yet been found to localize to MRGs [70].

In addition to MRGs, both components of the mitochondrial degradosome, RNA helicase Suv3 and 3'→5' exoribonuclease polynucleotide phosphorylase (PNPase), have been found to localize in discrete punctae known as D-foci [66]. A portion of these identified D-foci colocalize with newly synthesized, BrU-labeled mtRNAs, and therefore potentially overlap spatially and functionally with MRGs (Figure 1). These D-foci, therefore, may contain specific mtRNAs that require the action of the degradosome for their maturation, for example ND6 [65], or may represent turnover events of newly synthesized but misprocessed RNAs.

Many factors necessary for mitoribosome biogenesis have also been localized in MRGs (Figure 2). Hence, it has been proposed that MRGs are also centers for mitoribosome biogenesis, with a function analogous to that of the nucleolus where initial steps of cytoplasmic ribosome assembly are performed [49,52,71]. Fractionation-based enrichment experiments suggested that nucleoids copurify with mitochondrial factors involved in mtRNA metabolism, mitoribosome biogenesis, and translation, as well as with mitochondrial ribosomal proteins (MRPs). The latter have also been found to reside in MRGs [48,72,73]. It has been suggested that early steps of mitoribosome assembly take place co-transcriptionally, with incorporation and assembly of MRPs occurring in concert with mt-rRNA nucleotide modifications [74,75]. This overlap in the protein complement associated with either the mitochondrial nucleoid or MRGs suggests intimate association of these two entities. Therefore, it is possible that both mtDNA and its transcription products are partitioned within non-membrane compartments to provide a greater degree of spatiotemporal regulation of mtRNA processing, for example, by sequestering immature mtRNAs within MRGs, away from mitochondrial translation processes [76] (Figure 1).

Coordination of nDNA and mtDNA Gene Expression

Owing to the dual genetic origin of OxPhos complexes, there is a need for tight coordination between the synthesis of nucleus-encoded and mtDNA-derived components to prevent the accumulation of unaffiliated subunits in the mitochondrial membrane. In the past this problem was investigated mainly in the context of transcriptional response by the nucleus-encoded mitochondrial genes (e.g., [77]). However, whether the translation of nucleus-encoded and mitochondria-encoded transcripts change concordantly was not clear. A recent study in yeast has sought to address the mechanisms responsible for controlling the mitochondrial–nuclear protein balance using whole-cell genomic profiling approaches upon switching from anaerobic to oxygen-dependent respiration [78]. In response to nutrient shift, the nucleus-encoded OxPhos mRNAs are induced rapidly, with mitochondria-encoded OxPhos messages being upregulated much more slowly. However, yeast ribosome profiling experiments revealed that, during adaptation from anaerobic to aerobic growth, mitochondrial and cytosolic translation are regulated in a rapid and coordinated manner. Furthermore, this adaptation is unidirectional because mitochondrial gene expression was dependent on cytosolic translation and the import of nucleus-encoded factors into mitochondria, whereas inhibition of mitochondrial protein synthesis had no effect on the translation efficiency of nucleus-encoded OxPhos subunits. In yeast, many transcript-specific activators, that have roles in initiation and/or elongation, control the translation of mitochondrial mRNAs [79]. Unraveling the roles of these translation activators in mediating the synchronized cytoplasmic–mitochondrial response will be an important goal for future research.

There are significant differences, however, between the genetic systems of yeast and mammalian mitochondria, and it will be necessary to determine whether the transcription/translation control observed in yeast during adaptation of OxPhos to different metabolic settings is a universal process. For instance, the structures of mammalian mt-mRNAs differ significantly from those of their yeast counterparts (the lack of introns, very short or absent untranslated regions, or the presence of polyadenylation in mammalian mRNAs). In addition, only one

mitochondrial translation activator has been identified in mammalian mitochondria [80,81], suggesting the mechanisms of mammalian mitochondrial gene regulation have diverged significantly from those found in yeast. For these reasons, the application of similar whole-cell genome approaches to mammalian systems would be advantageous.

Feedback mechanisms that fine-tune the translation of a subset of mitochondria-encoded proteins to optimize the levels of assembled into OxPhos complexes have been a subject of intense research in yeast [82,83]. By contrast, much less is known about these processes during the biogenesis of the mammalian OxPhos system. A very recent study has identified 'mitochondrial translational plasticity' as a means to coordinate the assembly of cytochrome c oxidase (COX, complex IV) with mitochondrial translation stalling and restarting according to the availability of nucleus-encoded subunits [84]. The authors found that, in the absence of COX4 (the first incorporated nucleus-encoded COX subunit), translation of mtDNA-encoded COX1 is halted, resulting in stalled ribosomes carrying nascent COX1 peptides associated with the early COX assembly intermediates [84]. This represents a novel pathway of mitochondrial translational control whereby lack of an available nucleus-encoded OxPhos subunit binding partner acts as a direct signal to inhibit mitochondrial translation, preventing the accumulation of an excess of mtDNA-derived subunits that are unaffiliated to OxPhos complexes.

It will be intriguing to determine, through applying a similar experimental approach, whether there is related translational plasticity during the assembly of the other OxPhos complexes with dual genetic origin (complexes I, III, and ATP synthase).

Concluding Remarks and Future Perspectives

Recent years have brought many important insights into the regulation of mtDNA gene expression. Several novel factors have been identified, either via basic research approaches, or through the study of patients with respiratory chain disorders. The characterization of these factors has furthered the basic understanding of their function in the context of mtRNA metabolism and translation, in addition to shedding new light upon these processes. Nonetheless, many fundamental questions, frequently related to the pathology of mitochondrial diseases, remain unanswered and new questions have arisen (see Outstanding Questions). The future research of mitochondrial gene expression is expected to continue focusing on the regulatory function of post-transcriptional mtRNA modifications as well as on the biogenesis of the mitoribosome and of RNA granules. The application of genome-wide approaches to study mtDNA gene expression, such as ribosome profiling, is expected to be more widespread as a tool to investigate the basic features and pathology-related defects of mitochondrial protein synthesis. Studies of the molecular mechanisms that govern mtDNA gene expression are impeded by the inability to manipulate the mitochondrial genome at will, hence a routine analysis of the role of *cis*-acting elements involved in mitochondrial transcription or RNA maturation is currently impossible [85]. Therefore, future work should also focus on resolving this practical issue to enable a reverse genetics approach for a comprehensive structure–function study of mtDNA gene expression. Finally, the development of an *in vitro* system for mitochondrial translation would be useful to directly establish the mechanistic details of intra-mitochondrial protein synthesis. This task is currently confounded, however, by our incomplete understanding of the basic components required and the need for membrane association of the mitochondrial translation machinery.

References

1. Calvo, S.E. *et al.* (2016) MitoCarta2.0: an updated inventory of mammalian mitochondrial proteins. *Nucleic Acids Res.* 44, D1251–D1257
2. Smith, A.C. and Robinson, A.J. (2016) MitoMiner v3.1, an update on the mitochondrial proteomics database. *Nucleic Acids Res.* 44, D1258–D1261
3. Van Haute, L. *et al.* (2015) Mitochondrial transcript maturation and its disorders. *JIMD* 38, 655–680
4. Nicholls, T.J. *et al.* (2013) Mitochondria: mitochondrial RNA metabolism and human disease. *Int J Biochem Cell Biol.* 45, 845–849

Outstanding Questions

What further factors are involved in post-transcriptional mtRNA modifications?

How is processing at non-canonical cleavage sites in polycistronic mtRNA transcripts achieved?

What are the precise roles of mtRNA nucleotide modifications in mitochondrial ribosome biogenesis and/or translation regulation?

How is assembly of mitochondrial ribosomal proteins into the large and small mitoribosomal subunits regulated?

What functional roles do MRGs play in the spatial and temporal organization of mtRNA processing?

What signals/mechanisms are required for concerted translation of cytoplasmic and mitochondrial OxPhos mRNAs?

5. Boczonadi, V. and Horvath, R. (2014) Mitochondria: impaired mitochondrial translation in human disease. *Int J Biochem Cell Biol.* 48, 77–84
6. Gustafsson, C.M. *et al.* (2016) Maintenance and expression of mammalian mitochondrial DNA. *Annu Rev Biochem.* 85, 133–160
7. Kazak, L. *et al.* (2012) Minimizing the damage: repair pathways keep mitochondrial DNA intact. *Nat Rev Mol Cell Biol.* 13, 659–671
8. Rorbach, J. and Minczuk, M. (2012) The post-transcriptional life of mammalian mitochondrial RNA. *Biochem J.* 444, 357–273
9. Ott, M. *et al.* (2016) Organization and regulation of mitochondrial protein synthesis. *Annual Review of Biochemistry* 85, 77–101
10. Fernandez-Vizarra, E. *et al.* (2009) Assembly of the oxidative phosphorylation system in humans: what we have learned by studying its defects. *Biochim Biophys Acta.* 1793, 200–111
11. Lee, K.W. and Bogenhagen, D.F. (2014) Assignment of 2'-O-methyltransferases to modification sites on the mammalian mitochondrial large subunit 16S rRNA. *J Biol Chem.* 289, 24936–24942
12. Rorbach, J. *et al.* (2014) MRM2 and MRM3 are involved in biogenesis of the large subunit of the mitochondrial ribosome. *Mol Biol Cell.* 25, 2542–2555
13. Metodiev, M.D. *et al.* (2009) Methylation of 12S rRNA is necessary for *in vivo* stability of the small subunit of the mammalian mitochondrial ribosome. *Cell Metab.* 9, 386–397
14. Metodiev, M.D. *et al.* (2014) NSUN4 is a dual function mitochondrial protein required for both methylation of 12S rRNA and coordination of mitoribosomal assembly. *PLoS Genet.* 10, e1004110
15. Seidel-Pogol, B.L. *et al.* (2003) Human mitochondrial transcription factor B1 methylates ribosomal RNA at a conserved stem-loop. *Nat Genet.* 33, 23–24
16. Bar-Yaacov, D. *et al.* (2016) Mitochondrial 16S rRNA is methylated by tRNA methyltransferase TRMT61B in all vertebrates. *PLoS Biol.* 14, e1002557
17. Suzuki, T. and Suzuki, T. (2014) A complete landscape of post-transcriptional modifications in mammalian mitochondrial tRNAs. *Nucleic Acids Res.* 42, 7346–7357
18. Suzuki, T. *et al.* (2011) Human mitochondrial tRNAs: biogenesis, function, structural aspects, and diseases. *Annu Rev Genet.* 45, 299–329
19. Powell, C.A. *et al.* (2015) Nuclear-encoded factors involved in post-transcriptional processing and modification of mitochondrial tRNAs in human disease. *Front Genet.* 6, 79
20. Machnicka, M.A. *et al.* (2013) MODOMICS: a database of RNA modification pathways – 2013 update. *Nucleic Acids Res.* 41, D262–267
21. Motorin, Y. and Helm, M. (2011) RNA nucleotide methylation. *Wiley Interdiscip Rev RNA.* 2, 611–631
22. Moriya, J. *et al.* (1994) A novel modified nucleoside found at the first position of the anticodon of methionine tRNA from bovine liver mitochondria. *Biochemistry* 33, 2234–2239
23. Bilbille, Y. *et al.* (2011) The human mitochondrial tRNAMet: structure/function relationship of a unique modification in the decoding of unconventional codons. *J Mol Biol.* 406, 257–274
24. Takemoto, C. *et al.* (2009) Unconventional decoding of the AUA codon as methionine by mitochondrial tRNAMet with the anticodon f5CAU as revealed with a mitochondrial *in vitro* translation system. *Nucleic Acids Res.* 37, 1616–1627
25. Haag, S. *et al.* (2016) NSUN3 and ABH1 modify the wobble position of mt-tRNAMet to expand codon recognition in mitochondrial translation. *EMBO J.* 35, 2104–2119
26. Nakano, S. *et al.* (2016) NSUN3 methylase initiates 5-formylcytidine biogenesis in human mitochondrial tRNA(Met). *Nat. Chem. Biol.* 12, 546–551
27. Van Haute, L. *et al.* (2016) Deficient methylation and formylation of mt-tRNA(Met) wobble cytosine in a patient carrying mutations in NSUN3. *Nat Commun.* 7, 12039
28. Spenkuch, F. *et al.* (2014) Pseudouridine: still mysterious but never a fake (uridine)! *RNA Biol.* 11, 1540–1554
29. Ofengand, J. and Bakin, A. (1997) Mapping to nucleotide resolution of pseudouridine residues in large subunit ribosomal RNAs from representative eukaryotes, prokaryotes, archaeobacteria, mitochondria and chloroplasts. *J Mol Biol.* 266, 246–268
30. Fernandez-Vizarra, E. *et al.* (2007) Nonsense mutation in pseudouridylate synthase 1 (PUS1) in two brothers affected by myopathy, lactic acidosis and sideroblastic anaemia (MLASA). *Journal of medical genetics* 44, 173–180
31. Arroyo, J.D. *et al.* (2016) A genome-wide CRISPR death screen identifies genes essential for oxidative phosphorylation. *Cell Metab.* 24, 875–885
32. Antonicka, H. *et al.* (2017) A pseudouridine synthase module is essential for mitochondrial protein synthesis and cell viability. *EMBO Rep.* 18, 28–38
33. Zaganelli, S. *et al.* (2017) The pseudouridine synthase RPUSD4 is an essential component of mitochondrial RNA granules. *J Biol Chem.* Published online January 12, 2017. <http://dx.doi.org/10.1074/jbc.m116.771105>
34. Carille, T.M. *et al.* (2014) Pseudouridine profiling reveals regulated mRNA pseudouridylation in yeast and human cells. *Nature* 515, 143–116
35. Brown, A. *et al.* (2014) Structure of the large ribosomal subunit from human mitochondria. *Science* 346, 718–722
36. Greber, B.J. *et al.* (2014) The complete structure of the large subunit of the mammalian mitochondrial ribosome. *Nature* 515, 283–286
37. Greber, B.J. *et al.* (2015) The complete structure of the 55S mammalian mitochondrial ribosome. *Science* 348, 303–308
38. Amunts, A. *et al.* (2015) The structure of the human mitochondrial ribosome. *Science* 348, 95–98
39. Smimov, A. *et al.* (2011) Biological significance of 5S rRNA import into human mitochondria: role of ribosomal protein MRP-L18. *Genes Dev.* 25, 1289–1305
40. Rorbach, J. *et al.* (2016) Human mitochondrial ribosomes can switch their structural RNA composition. *Proc Natl Acad Sci U S A.* 113, 12198–12201
41. Gammage, P.A. *et al.* (2016) Near-complete elimination of mutant mtDNA by iterative or dynamic dose-controlled treatment with mtZFNs. *Nucleic Acids Res.* 44, 7804–7816
42. Hage, A.E. and Tollervey, D. (2004) A surfeit of factors: why is ribosome assembly so much more complicated in eukaryotes than bacteria? *RNA Biol.* 1, 10–15
43. Nierhaus, K.H. (2006) Bacterial ribosomes: assembly. In *Encyclopedia of Life Sciences*. John Wiley & Sons. Published online January 27, 2006. <http://dx.doi.org/10.1038/npg.els.0003947>
44. De Silva, D. *et al.* (2015) Mitochondrial ribosome assembly in health and disease. *Cell Cycle.* 14, 2226–2250
45. Camara, Y. *et al.* (2011) MTERF4 regulates translation by targeting the methyltransferase NSUN4 to the mammalian mitochondrial ribosome. *Cell Metab.* 13, 527–539
46. Dennerlein, S. *et al.* (2010) Human ERAL1 is a mitochondrial RNA chaperone involved in the assembly of the 28S small mitochondrial ribosomal subunit. *Biochem J.* 430, 551–558
47. Uchiumi, T. *et al.* (2010) ERAL1 is associated with mitochondrial ribosome and elimination of ERAL1 leads to mitochondrial dysfunction and growth retardation. *Nucleic Acids Res.* 38, 5554–5568
48. He, J. *et al.* (2012) Human C4orf14 interacts with the mitochondrial nucleoid and is involved in the biogenesis of the small mitochondrial ribosomal subunit. *Nucleic Acids Res.* 40, 6097–6108
49. Antonicka, H. and Shoubridge, E.A. (2015) Mitochondrial RNA granules are centers for posttranscriptional RNA processing and ribosome biogenesis. *Cell Reports.* 10, 920–932
50. Wredenber, A. *et al.* (2013) MTERF3 regulates mitochondrial ribosome biogenesis in invertebrates and mammals. *PLoS Genet.* 9, e1003178
51. Popow, J. *et al.* (2015) FASTKD2 is an RNA-binding protein required for mitochondrial RNA processing and translation. *RNA* 21, 1873–1884

52. Tu, Y.T. and Barrientos, A. (2015) The human mitochondrial DEAD-box protein DDX28 resides in RNA granules and functions in mitoribosome assembly. *Cell Reports*. 10, 854–864
53. Rosa, I.D. *et al.* (2014) MPV17L2 is required for ribosome assembly in mitochondria. *Nucleic Acids Res.* 42, 8500–8515
54. Hauser, R. *et al.* (2012) RsfA (YbeB) proteins are conserved ribosomal silencing factors. *PLoS Genet.* 8, e1002815
55. Fung, S. *et al.* (2013) The conserved interaction of C7orf30 with MRPL14 promotes biogenesis of the mitochondrial large ribosomal subunit and mitochondrial translation. *Mol Biol Cell.* 24, 184–193
56. Rorbach, J. *et al.* (2012) C7orf30 is necessary for biogenesis of the large subunit of the mitochondrial ribosome. *Nucleic Acids Res.* 40, 4097–4109
57. Wanschers, B.F. *et al.* (2012) C7orf30 specifically associates with the large subunit of the mitochondrial ribosome and is involved in translation. *Nucleic Acids Res.* 40, 4040–4051
58. Wu, S. *et al.* (2016) Diverse roles of assembly factors revealed by structures of late nuclear pre-60S ribosomes. *Nature* 534, 133–137
59. Wessels, H.J. *et al.* (2013) Analysis of 953 human proteins from a mitochondrial HEK293 fraction by complexome profiling. *PLoS One* 8, e68340
60. Satoh, M. and Kuroiwa, T. (1991) Organization of multiple nucleoids and DNA-molecules in mitochondria of a human cell. *Exp Cell Res.* 196, 137–140
61. Garrido, N. *et al.* (2003) Composition and dynamics of human mitochondrial nucleoids. *Mol Biol Cell.* 14, 1583–1596
62. Kukat, C. *et al.* (2015) Cross-strand binding of TFAM to a single mtDNA molecule forms the mitochondrial nucleoid. *Proc Natl Acad Sci U S A.* 112, 11288–11293
63. Iborra, F.J. *et al.* (2004) The functional organization of mitochondrial genomes in human cells. *BMC Biol.* 2, 9
64. Jourdain, A.A. *et al.* (2013) GRSF1 regulates RNA processing in mitochondrial RNA granules. *Cell Metab.* 17, 399–410
65. Jourdain, A.A. *et al.* (2015) A mitochondria-specific isoform of FASTK is present in mitochondrial RNA granules and regulates gene expression and function. *Cell Reports*. 10, 1110–1121
66. Borowski, L.S. *et al.* (2013) Human mitochondrial RNA decay mediated by PNPase-hSuv3 complex takes place in distinct foci. *Nucleic Acids Res.* 41, 1223–1240
67. Lee, K.W. *et al.* (2013) Mitochondrial ribosomal RNA (rRNA) methyltransferase family members are positioned to modify nascent rRNA in foci near the mitochondrial DNA nucleoid. *J Biol Chem.* 288, 31386–31399
68. Antonicka, H. *et al.* (2013) The mitochondrial RNA-binding protein GRSF1 localizes to RNA granules and is required for post-transcriptional mitochondrial gene expression. *Cell Metab.* 17, 386–398
69. Wilson, W.C. *et al.* (2014) A human mitochondrial poly(A) polymerase mutation reveals the complexities of post-transcriptional mitochondrial gene expression. *Hum Mol Genet.* 23, 6345–6355
70. Wolf, A.R. and Mootha, V.K. (2014) Functional genomic analysis of human mitochondrial RNA processing. *Cell Reports* 7, 918–931
71. Barrientos, A. (2015) Mitochondriolus: assembling mitoribosomes. *Oncotarget* 6, 16800–16801
72. Bogenhagen, D.F. *et al.* (2008) The layered structure of human mitochondrial DNA nucleoids. *J Biol Chem.* 283, 3665–3675
73. He, J. *et al.* (2012) Mitochondrial nucleoid interacting proteins support mitochondrial protein synthesis. *Nucleic Acids Res.* 40, 6109–6121
74. Bogenhagen, D.F. *et al.* (2014) Initial steps in RNA processing and ribosome assembly occur at mitochondrial DNA nucleoids. *Cell Metab.* 19, 618–629
75. Rackham, O. *et al.* (2016) Hierarchical RNA processing is required for mitochondrial ribosome assembly. *Cell Reports* 16, 1874–1890
76. Jourdain, A.A. *et al.* (2016) Mitochondrial RNA granules: compartmentalizing mitochondrial gene expression. *J Cell Biol.* 212, 611–614
77. Roberts, G.G. and Hudson, A.P. (2006) Transcriptome profiling of *Saccharomyces cerevisiae* during a transition from fermentative to glycerol-based respiratory growth reveals extensive metabolic and structural remodeling. *Mol Genet Genomics* 276, 170–186
78. Couvillion, M.T. *et al.* (2016) Synchronized mitochondrial and cytosolic translation programs. *Nature* 533, 499–503
79. Herrmann, J.M. *et al.* (2013) Control of protein synthesis in yeast mitochondria: the concept of translational activators. *BBA Mol Cell Res.* 1833, 286–294
80. Richman, T.R. *et al.* (2016) Loss of the RNA-binding protein TACO1 causes late-onset mitochondrial dysfunction in mice. *Nature Commun.* 7, 11884
81. Weraarpachai, W. *et al.* (2009) Mutation in TACO1, encoding a translational activator of COX I, results in cytochrome c oxidase deficiency and late-onset Leigh syndrome. *Nat Genet.* 41, 833–837
82. Gruschke, S. *et al.* (2012) The Cbp3–Cbp6 complex coordinates cytochrome b synthesis with bc(1) complex assembly in yeast mitochondria. *J Cell Biol.* 199, 137–150
83. Barrientos, A. *et al.* (2004) Mss51p and Cox14p jointly regulate mitochondrial Cox1p expression in *Saccharomyces cerevisiae*. *EMBO J.* 23, 3472–3482
84. Richter-Dennerlein, R. *et al.* (2016) Mitochondrial protein synthesis adapts to influx of nuclear-encoded protein. *Cell* 167, 471–483
85. Lightowers, R.N. (2011) Mitochondrial transformation: time for concerted action. *EMBO Rep.* 12, 480–481
86. Tiranti, V. *et al.* (1997) Identification of the gene encoding the human mitochondrial RNA polymerase (h-mtRPO1) by cyberscreening of the expressed sequence tags database. *Hum Mol Genet.* 6, 615–625
87. Gaspari, M. *et al.* (2004) The mitochondrial RNA polymerase contributes critically to promoter specificity in mammalian cells. *EMBO J.* 23, 4606–4614
88. Falkenberg, M. *et al.* (2002) Mitochondrial transcription factors B1 and B2 activate transcription of human mtDNA. *Nat Genet.* 31, 289–294
89. Minczuk, M. *et al.* (2011) TEFM (c17orf42) is necessary for transcription of human mtDNA. *Nucleic Acids Res.* 39, 4284–4299
90. Ojala, D. *et al.* (1981) tRNA punctuation model of RNA processing in human mitochondria. *Nature* 290, 470–474
91. Holzmann, J. *et al.* (2008) RNase P without RNA: identification and functional reconstitution of the human mitochondrial tRNA processing enzyme. *Cell* 135, 462–474
92. Brzezniak, L.K. *et al.* (2011) Involvement of human ELAC2 gene product in 3' end processing of mitochondrial tRNAs. *RNA Biol.* 8, 616–626
93. Tomecki, R. *et al.* (2004) Identification of a novel human nuclear-encoded mitochondrial poly(A) polymerase. *Nucleic Acids Res.* 32, 6001–6014
94. Lagouge, M. *et al.* (2015) SLIRP regulates the rate of mitochondrial protein synthesis and protects LRPPRC from degradation. *PLoS Genet.* 11, e1005423
95. Ruzzenente, B. *et al.* (2011) LRPPRC is necessary for polyadenylation and coordination of translation of mitochondrial mRNAs. *EMBO J.* 31, 443–456
96. Sasarman, F. *et al.* (2010) LRPPRC and SLIRP interact in a ribonucleoprotein complex that regulates posttranscriptional gene expression in mitochondria. *Mol Biol Cell.* 21, 1315–1323
97. Rorbach, J. *et al.* (2011) PDE12 removes mitochondrial RNA poly(A) tails and controls translation in human mitochondria. *Nucleic Acids Res.* 39, 7750–7763
98. Konovalova, S. and Tynismaa, H. (2013) Mitochondrial aminoacyl-tRNA synthetases in human disease. *Mol Genet Metab.* 108, 206–211
99. van der Sluis, E.O. *et al.* (2015) Parallel structural evolution of mitochondrial ribosomes and OXPHOS complexes. *Genome Biol Evol.* 7, 1235–1251

100. Vilardo, E. *et al.* (2012) A subcomplex of human mitochondrial RNase P is a bifunctional methyltransferase – extensive moonlighting in mitochondrial tRNA biogenesis. *Nucleic Acids Res.* 40, 11583–11593
101. Minczuk, M. *et al.* (2002) Localisation of the human hSuv3p helicase in the mitochondrial matrix and its preferential unwinding of dsDNA. *Nucleic Acids Res.* 30, 5074–5086
102. Piwowarski, J. *et al.* (2003) Human polynucleotide phosphorylase, hPNPase, is localized in mitochondria. *J Mol Biol.* 329, 853–857
103. Szczesny, R.J. *et al.* (2010) Human mitochondrial RNA turnover caught in flagranti: involvement of hSuv3p helicase in RNA surveillance. *Nucleic Acids Res.* 38, 279–298
104. Dubin, D.T. (1974) Methylated nucleotide content of mitochondrial ribosomal RNA from hamster cells. *J. Mol. Biol.* 84, 257–273
105. Dubin, D.T. and Taylor, R.H. (1978) Modification of mitochondrial ribosomal RNA from hamster cells: the presence of GmG and late-methylated UmGmU in the large subunit (17S) RNA. *J. Mol. Biol.* 121, 523–540
106. Baer, R. and Dubin, D.T. (1980) The 3'-terminal sequence of the small subunit ribosomal RNA from hamster mitochondria. *Nucleic Acids Res.* 8, 4927–4941
107. Baer, R.J. and Dubin, D.T. (1981) Methylated regions of hamster mitochondrial ribosomal RNA: structural and functional correlates. *Nucleic Acids Res.* 9, 323–337