



Milojevic, A; Armstrong, B; Wilkinson, P (2017) Mental health impacts of flooding: a controlled interrupted time series analysis of prescribing data in England. *Journal of epidemiology and community health*. ISSN 0143-005X DOI: <https://doi.org/10.1136/jech-2017-208899>

Downloaded from: <http://researchonline.lshtm.ac.uk/4328552/>

DOI: [10.1136/jech-2017-208899](https://doi.org/10.1136/jech-2017-208899)

Usage Guidelines

Please refer to usage guidelines at <http://researchonline.lshtm.ac.uk/policies.html> or alternatively contact researchonline@lshtm.ac.uk.

Available under license: <http://creativecommons.org/licenses/by-nc-nd/2.5/>

August 2017, accepted version by JECH

Article type: Short report

Mental Health Impacts of Flooding: A Controlled Interrupted Time Series Analysis of Prescribing Data in England

Ai Milojevic¹, Ben Armstrong¹ and Paul Wilkinson¹

1 - Department of Social and Environmental Health Research, London School of Hygiene & Tropical Medicine, 15-17 Tavistock Place, London WC1H 9SH, UK

Correspondence: Ai Milojevic, Department of Social and Environmental Health Research, London School of Hygiene & Tropical Medicine, 15-17 Tavistock Place, London WC1H 9SH. E-mail: ai.milojevic@lshtm.ac.uk. Tel: +44-(0)20-7927-2054.

Word count: 1582 (excluding title page, abstract, references, tables and figure legends)

Number of tables: 1

Number of figures: 1

Number of Supplementary materials: 1

ABSTRACT

Background There is emerging evidence that people affected by flooding suffer adverse impacts on their mental well-being, mostly based on self-reports.

Methods We examined prescription records for drugs used in the management of common mental disorder among primary care practices located in the vicinity of recent large flood events in England, 2011-14. A controlled interrupted time series analysis was conducted of the number of prescribing items for antidepressant drugs in the year before and after the flood onset. Pre-post changes were compared by distance of the practice from the inundated boundaries among 930 practices located within 10km of a flood.

Results After control for deprivation and population density, there was an increase of 0.59% (95% Confidence Interval: 0.24, 0.94%) prescriptions in the post-flood year among practices located within 1 km of a flood over and above the change observed in the furthest distance band. The increase was greater in more deprived areas.

Conclusions This study suggests an increase in prescribed antidepressant drugs in the year after flooding in primary care practices close to recent major floods in England. The degree to which the increase is actually concentrated in those flooded can only be determined by more detailed linkage studies.

(Main text)

INTRODUCTION

Floods are the most common type of natural disaster globally. In the UK, around 1.8 million people live in properties with an annual risk of flooding greater than 1 in 75,[1] a number expected to increase because of climate change and the pressures of development.[1]

Although the immediate risk of death and injury from flooding is small in high income countries such as the UK, there is growing evidence of medium to longer term adverse effects on mental health:[2-7] increased rates of depression/anxiety and post-traumatic stress disorder as well as exacerbation of illness in persons with pre-existing depression have been reported in flood-affected populations.[4-6] However, the evidence remains inconclusive in part because floods can only be studied retrospectively and usually without robust pre-flood baseline data,[8, 9] a methodological challenge that also applies to other natural and manmade disasters.[10-12]

In this study, we examine the mental health impacts of floods in England using routine prescriptions data which can provide data for both pre- and post-flood periods in flooded and non-flooded populations.

METHODS

Practices prescribing data

The General Practice Prescribing Data covers all National Health Service prescriptions written by general practitioners and non-medical prescribers (including nurses and pharmacists) attached to primary care practices in England and dispensed in the community in the United Kingdom (UK).[13] It records the total number of items, total net ingredient cost, actual cost and quantity prescribed and dispensed by practice, month and medicine presentation (British National Formulary (BNF) code). We extracted data on prescriptions of antidepressant drugs (see eList in Supplementary material) and other, non-antidepressant, drugs.

Practices, identified by national code, were mapped using the coordinates of the centroid of the unit postcode (approximately 14 households *per* postcode) of their addresses at the time the prescriptions were dispensed. Practices located within 10 km of the flood boundaries of the target flood events described below were analysed. Practices which changed address in the interval between a year before and after the flood onset were excluded. Note that for all practices, including those located within very short distances of a flood area, only a small proportion of the practice's registered patients would have been affected by flooding.

Measurement of flood exposure

We used the Recorded Flood Outlines (version 201602, UK Environment Agency), a Geographic Information System database which contains the boundaries of inundated land identified from multiple sources including surveys, visual investigation and aerial photographs, together with related attributes such as start and end date of the flood event and flood type (fluvial, tidal, and/or coastal). Pre- and post-flood periods were defined with respect

to start date of the flood. The study was confined to the large flood events, June 2011 to November 2014, which each flooded more than 500 addresses ('delivery points' in ONS Code-Point data): the 2013 North East tidal surge, the East coast tidal event, the East Midland tidal surge, the East of England tidal surge and the South West floods in winter 2013/14 (eFigure1, Supplementary material). All these areas were first inundated in December 2013 except the mostly fluvial floods of the South West, which were first flooded between December 2013 and February 2014. In total, 6,000 households and 13,000 people were estimated to have been flooded by overlaying with 2011 Census data.[14]

Each practice was classified by quintile of socio-economic deprivation using the Income and Employment domains of 2015 English Index of Multiple Deprivation (IMD) [15] for the Lower-level Super Output Area (LSOA, average population 1500) where the practice is located, and by quintile of the averaged population density across output areas within 2 km of the practice (a radius chosen to represent the level of rurality of the main catchment area of the practice).

Analysis

Analysis was based on a controlled interrupted time series Poisson regression [16, 17] in which monthly prescriptions for antidepressant drugs were compared in the 12 months before and after the flood onset, and stratified by distance of the practice from the nearest flood boundary (using bands defined at 0-, 1-, 2-, 3-, 4-, and 5-10 km). The pre-post flood changes (rate ratios) for each distance band to 5 km were controlled for the change in the 5-10 km band by estimating an interaction rate ratio (yielding estimates we refer to as 'controlled pre-

post changes’). Risk factors for anti-depressant prescription that do not change over time are not confounders in this analysis, but we considered it possible that both neighbourhood population density and deprivation could be associated not just with prescription rates but also with *change* in prescription rates over time (prescription of anti-depressants is rising sharply in the UK [18]) and so controlled for this using interaction terms. In addition, we also controlled for the number of prescriptions of all other (non-antidepressant) drugs as a log offset. Confidence intervals (CIs) were adjusted for clustering by month using Huber-White estimators.[19] Results were also stratified by flood type and quintile of the neighbourhood deprivation scores. Trend in the pre-post change across the five flood distance bands was examined by fitting an interaction of the post-flood indicator with distance score, rescaled to 0 for the furthest (5-10 km) and 1 for the closest distance band, yielding a smoothed contrast in the controlled pre-post change across bands.

Data linkage of practices, the flood database and socio-economic deprivation markers were performed with ArcGIS version 10.3 and all statistical analyses with Stata version 14.

RESULTS

930 primary care practices were located within 10 km of the boundary of one of the selected five major flood events in England, 2011-2014 (eTable1, Supplementary material). The number of dispensed antidepressant drugs prescribed by these practices was 9.7% greater in the post-flood compared with the pre-flood year (Table1); the corresponding increase in non-antidepressant drugs was 4.1% (data not shown). However, even the most distant (5-10 km) band showed a 9.2% change in antidepressant drugs. When the pre-post change in

prescriptions was controlled for (divided by) that in the 5-10 km band, the post-flood increase in antidepressant drug prescriptions in the inner bands remained elevated by 0.76% (95% CI 0.44, 1.08%) in band 1 and 0.86% (0.35, 1.38%) in band 2 (Table 1). There was evidence that the pre-post change in prescriptions increased with decreasing distance from the flood areas as reflected by the interaction terms (results shown unadjusted, adjusted for deprivation- and population density-related change in prescriptions over time, and with additional control for the trend in non-antidepressant drugs – Table 1). Figure 1 shows the controlled pre-post change in antidepressant drugs per distance score by different flood event and quintile groups of neighbourhood deprivation score.

Table 1. Change of the Number of Antidepressant Drug Items Prescribed at Primary Care Practices a Year Before and After the Flood by Distance to an Inundated Area for Major Flood Events in England, 2011-14

Distance band	Pre-flood, n	Post-flood, n	Pre-post flood change (increase), %	Pre-post flood change (increase) relative to that in the 5-10 km band (95% CI) ('controlled pre-post change') ^a , %	% increase in the controlled pre-post change in prescriptions of the antidepressant drugs per distance score ^b (95% CI) adjusted for:		
					Unadjusted (model A)	Impact of deprivation and population density on change in prescriptions over time (model B)	Model B with further adjustment for prescription of the non-antidepressant drugs (model C)
<1 km	1749657	1925043	10.02	0.76 (0.44, 1.08)	0.92 (0.59, 1.26)	0.59 (0.24, 0.94)	0.57 (0.23, 0.92)
1- km	1217380	1340817	10.14	0.86 (0.35, 1.38)			
2- km	759145	834835	9.97	0.71 (-0.04, 1.46)			
3- km	660737	723398	9.48	0.26 (-0.24, 0.77)			
4- km	576816	628265	8.92	-0.03 (-0.78, 0.28)			
5-10 km	1833708	2002334	9.20	0			
Total	6797443	7454692	9.67	-	-	-	-

CI confidence intervals; ^a Pre-post change relative to the furthest distance band (5-10km) after controlling for month-to-month variation; ^b distance score is scaled as 0 for the furthest and 1 for the nearest distance band.

DISCUSSION

This study suggests an increase in prescribed antidepressant drugs in the year after flooding in primary care practices close to recent major floods in England. Although a very small change in relative terms (0.4-1.0% increase among practices within 1km of a flood area over the change observed in the furthest distance band), only a very small proportion of the patients registered with such practices will have been flooded. As an indication, we estimate that only 0.5% of postcodes within 5 km of such practices (an *upper* estimate for the catchment area of each practice) fell within a flood area.

It is a key limitation of our analysis that we had only practice level data which will have meant very considerable dilution of any observable effect of flooding on antidepressant prescriptions because flooded households make up a very small part of the overall registered populations of these practices. The absence of detailed information on catchment areas does not allow us to investigate further the distances between home address and the practice. As such, we cannot know the degree to which the observed change in prescriptions reflects a causal effect confined only to flooded households, but if it were almost entirely this, the relative increase in the flooded households would be substantial and would be very broadly consistent with the results of questionnaire surveys of flood victims which suggest relative risks for anxiety and/or depression in the range of a 2- to 5-fold increase.[4] Another source of uncertainty (a probable conservative bias) is possible exposure misclassification from displacement of people or of practices themselves following a flood, which *might* in some circumstances affect recorded prescriptions data.

Nonetheless, against these limitations is the fact that using routine prescriptions data, albeit at very crude spatial resolution, provides a basis for objective analysis of change in antidepressant drug use among population partly affected by flooding. While it is not possible to eliminate all other factors that might be associated with change in prescription over time and space, our analyses controlled for (compared with) antidepressant prescription in pre-flood period, in other areas more distant from the flood, and non-antidepressant prescriptions. These comparisons strengthen the case of a specific effect of flooding on antidepressant drug use and thus presumably of clinical mental disorder. This is important as the literature is dominated by studies in which post-flood questionnaire data on mental status, possibly subject to responder bias, have been gathered without baseline reference or control for change in non-flood areas. Mental health impacts may be among the most important adverse effects of flooding, especially for vulnerable individuals, and linked not only to the trauma of the flooding, but also to the damage to property, social disruption and sometimes appreciable financial loss.[20] However, although our analyses are consistent with a causal link, the degree to which the increase in prescribed antidepressant drugs observed in this study is actually concentrated among those directly flooded can only be determined by more detailed linkage studies.

Funding

This work was supported by Economic and Social Research Council (ES/L007517/1) and the National Institute for Health Research Health Protection Research Unit in Environmental Change and Health.

Ethics Approval

Ethics approval is not required as this study involves information freely available in the public domain.

Contributors

AM designed the study, conducted the analysis and drafted the initial paper; BA contributed quality assurance of statistical methods of this analysis; and PW helped selection of antidepressant drugs from BNF codes. All authors contributed to draft and review the paper.

Licence for Publication

The Corresponding Author has the right to grant on behalf of all authors and does grant on behalf of all authors, an exclusive licence (or non exclusive for government employees) on a worldwide basis to the BMJ Publishing Group Ltd to permit this article (if accepted) to be published in JECH and any other BMJ PGL products and sublicences such use and exploit all subsidiary rights, as set out in our licence (<http://group.bmj.com/products/journals/instructions-for-authors/licence-forms>).

Competing interests: None declared.

What is already known on this subject

Emerging reports suggest flooding has adverse impacts on mental well-being among those affected. However, evidence remained limited as the most previous studies are based on survey or self-reports without robust pre-flood records.

What this study adds

- Linkage of administrative data, national flood database and primary care practices prescription, provided a systematic approach of controlled interrupted time-series design with rigorous control for pre-flood period, other areas far from the flooded boundaries, major areal characteristics such as deprivation and population density and non-antidepressant drugs.
- This study demonstrated an increase in prescribed antidepressant drugs in the year after flooding in primary care practices close to recent major floods in England.
- Despite small increase in prescribed antidepressant drugs in relative terms, high prevalence of mental disorders implied substantial mental health burdens after flooding, suggesting important implications for public health practices after disaster.
- More detailed linkage studies are required to detangle the contribution of actual individual flood exposure.

REFERENCES

- 1 Sayer PB, Horritt MS, Penning-Rowsell E, *et al.* Climate Change Risk Assessment 2017: Projections of future flood risk in the UK. Sayers and Partners LLP report for the Committee on Climate Change. London 2015.
- 2 Fewtrell L, Kay D. An attempt to quantify the health impacts of flooding in the UK using an urban case study. *Public Health* 2008;**122**:446-51. doi: 10.1016/j.puhe.2007.09.010. Epub 8 Jan 28.
- 3 Mason V, Andrews H, Upton D. The psychological impact of exposure to floods. *Psychology, health & medicine* 2010;**15**:61-73.
- 4 Paranjothy S, Gallacher J, Amlot R, *et al.* Psychosocial impact of the summer 2007 floods in England. *BMC public health* 2011;**11**:145.
- 5 Reacher M, McKenzie K, Lane C, *et al.* Health impacts of flooding in Lewes: a comparison of reported gastrointestinal and other illness and mental health in flooded and non-flooded households. *Communicable disease and public health / PHLIS* 2004;**7**:39-46.
- 6 Waite TD, Chaintarli K, Beck CR, *et al.* The English National Cohort Study of Flooding and Health: cross-sectional analysis of mental health outcomes at year one. *BMC public health* 2016:accepted.
- 7 Motreff Y, Pirard P, Gorla S, *et al.* Increase in psychotropic drug deliveries after the Xynthia storm, France, 2010. *Prehosp Disaster Med* 2013;**28**:428-33. doi: 10.1017/S1049023X13008662. Epub 2013 Jun 27.
- 8 Fernandez A, Black J, Jones M, *et al.* Flooding and mental health: a systematic mapping review. *PLoS One* 2015;**10**:e0119929. doi: 10.1371/journal.pone.. eCollection 2015.
- 9 Milojevic A. Technical Paper 8. Flooding and health. In: Kovats S, ed. *LWEC Health Climate Change Impacts Report Card: Living With Environmental Change* 2015.
- 10 Fergusson DM, Horwood LJ, Boden JM, *et al.* Impact of a major disaster on the mental health of a well-studied cohort. *JAMA Psychiatry* 2014;**71**:1025-31. doi: 10.01/jamapsychiatry.2014.652.
- 11 Hogg D, Kingham S, Wilson TM, *et al.* The effects of relocation and level of affectedness on mood and anxiety symptom treatments after the 2011 Christchurch earthquake. *Soc Sci Med* 2016;**152**:18-26.:10.1016/j.socscimed.2016.01.025. Epub Jan 19.
- 12 Truijens SE, Boerekamp CA, Spek V, *et al.* Increased levels of depressive symptoms among pregnant women in The Netherlands after the crash of flight MH17. *Am J Epidemiol* 2015;**182**:426-30. doi: 10.1093/aje/kwv161. Epub 2015 Jul 14.
- 13 Health and Social Care Information Centre. Prescribing by GP practice.
- 14 Office for National Statistics. Postcode Headcounts and Household Estimates - 2011 Census. 2013.
- 15 Government DoCaL. English indices of deprivation 2015. 2015.
- 16 Milojevic A, Armstrong B, Hashizume M, *et al.* Health effects of flooding in rural Bangladesh. *Epidemiology (Cambridge, Mass)* 2012;**23**:107-15.
- 17 Milojevic A, Armstrong B, Kovats S, *et al.* Long-term effects of flooding on mortality in England and Wales, 1994-2005: controlled interrupted time-series analysis. *Environmental health : a global access science source* 2011;**10**:11.
- 18 HSCIC. Prescriptions Dispensed in the Community, England 2005-2015. 2016.
- 19 Royall RM. Model Robust Confidence Intervals Using Maximum Likelihood Estimators. *International Statistica Review* 1986;**54**:221-6.
- 20 Fewtrell L, Kay D. An attempt to quantify the health impacts of flooding in the UK using an urban case study. *Public Health* 2008;**122**.

Figure

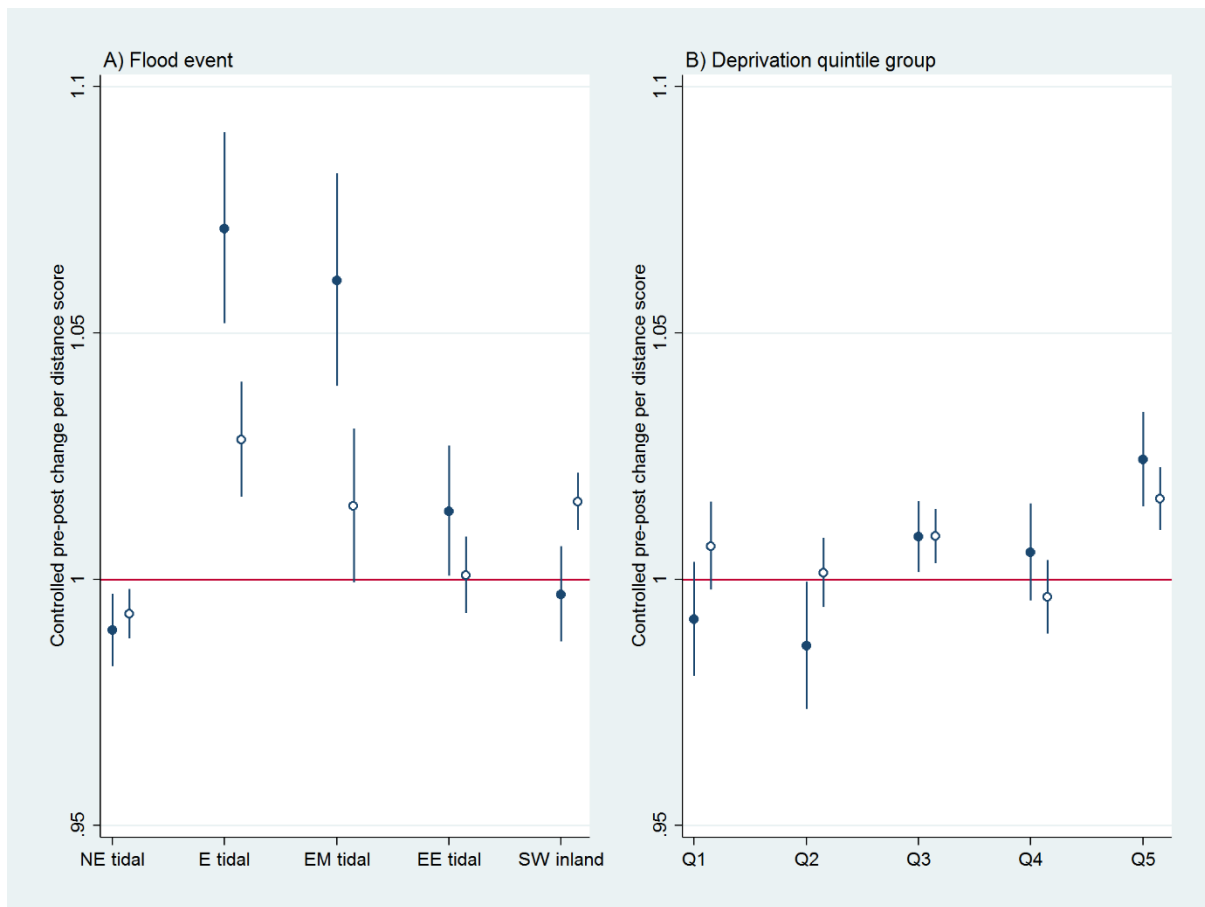


Figure 1. Controlled pre-post flood change (Interaction Rate Ratio) in the prescribed antidepressant drugs per distance score (scaled 0 for the furthest and 1 for the nearest distance band) by flood event (A) and socioeconomic deprivation quintile groups (Q1 for the least and Q5 for the most deprived) (B) for the major floods in England, 2011-2014. Filled circle shows that adjusted for year-month and impact of deprivation and population density on change in prescriptions over time and open circle shows that additionally adjusted for the number of non-antidepressant drugs. NE North East; E East; EM East Midland; EE East of England; SW South West.