

LONDON  
SCHOOL of  
HYGIENE  
& TROPICAL  
MEDICINE



Nambozi, M; Kabuya, JB; Hachizovu, S; Mwakazanga, D; Mulenga, J; Kasongo, W; Buyze, J; Mulenga, M; Van Geertruyden, JP; D'Alessandro, U (2017) Artemisinin-based combination therapy in pregnant women in Zambia: efficacy, safety and risk of recurrent malaria. *Malar J*, 16 (1). p. 199. ISSN 1475-2875 DOI: <https://doi.org/10.1186/s12936-017-1851-7>

Downloaded from: <http://researchonline.lshtm.ac.uk/4284294/>

DOI: [10.1186/s12936-017-1851-7](https://doi.org/10.1186/s12936-017-1851-7)

#### Usage Guidelines

Please refer to usage guidelines at <http://researchonline.lshtm.ac.uk/policies.html> or alternatively contact [researchonline@lshtm.ac.uk](mailto:researchonline@lshtm.ac.uk).


Available under license: <http://creativecommons.org/licenses/by/2.5/>

RESEARCH

Open Access



# Artemisinin-based combination therapy in pregnant women in Zambia: efficacy, safety and risk of recurrent malaria

Michael Nambozi<sup>1\*</sup> , Jean-Bertin Bukasa Kabuya<sup>1</sup>, Sebastian Hachizovu<sup>1</sup>, David Mwakazanga<sup>1</sup>, Joyce Mulenga<sup>1</sup>, Webster Kasongo<sup>1</sup>, Jozefien Buyze<sup>3</sup>, Modest Mulenga<sup>1</sup>, Jean-Pierre Van Geertruyden<sup>2</sup> and Umberto D'Alessandro<sup>3,4,5</sup>

## Abstract

**Background:** In Zambia, malaria is one of the leading causes of morbidity and mortality, especially among under five children and pregnant women. For the latter, the World Health Organization recommends the use of artemisinin-based combination therapy (ACT) in the second and third trimester of pregnancy. In a context of limited information on ACT, the safety and efficacy of three combinations, namely artemether–lumefantrine (AL), mefloquine–artesunate (MQAS) and dihydroartemisinin–piperaquine (DHAPQ) were assessed in pregnant women with malaria.

**Methods:** The trial was carried out between July 2010 and August 2013 in Nchelenge district, Luapula Province, an area of high transmission, as part of a multi-centre trial. Women in the second or third trimester of pregnancy and with malaria were recruited and randomized to one of the three study arms. Women were actively followed up for 63 days, and then at delivery and 1 year post-delivery.

**Results:** Nine hundred pregnant women were included, 300 per arm. PCR-adjusted treatment failure was 4.7% (12/258) (95% CI 2.7–8.0) for AL, 1.3% (3/235) (95% CI 0.4–3.7) for MQAS and 0.8% (2/236) (95% CI 0.2–3.0) for DHAPQ, with significant risk difference between AL and DHAPQ ( $p = 0.01$ ) and between AL and MQAS ( $p = 0.03$ ) treatments. Re-infections during follow up were more frequent in the AL (HR: 4.71; 95% CI 3.10–7.2;  $p < 0.01$ ) and MQAS (HR: 1.59; 95% CI 1.02–2.46;  $p = 0.04$ ) arms compared to the DHAPQ arm. PCR-adjusted treatment failure was significantly associated with women under 20 years [Hazard Ratio (HR) 5.35 (95% CI 1.07–26.73;  $p = 0.04$ )] and higher malaria parasite density [3.23 (95% CI 1.03–10.10;  $p = 0.04$ )], and still women under 20 years [1.78, (95% CI 1.26–2.52;  $p < 0.01$ )] had a significantly higher risk of re-infection. The three treatments were generally well tolerated. Dizziness, nausea, vomiting, headache and asthenia as adverse events (AEs) were more common in MQAS than in AL or DHAPQ ( $p < 0.001$ ). Birth outcomes were not significantly different between treatment arms.

**Conclusion:** As new infections can be prevented by a long acting partner drug to the artemisinins, DHAPQ should be preferred in places as Nchelenge district where transmission is intense while in areas of low transmission intensity AL or MQAS may be used.

**Keywords:** Zambia, Sub-Saharan, Africa, Artemisinin-combination therapy, Treatment failure

\*Correspondence: michaelnambozi@yahoo.com;

NamboziM@tdrc.org.zm

<sup>1</sup> Department of Clinical Sciences, Tropical Diseases Research Centre, P.O. Box 71769, Ndola, Zambia

Full list of author information is available at the end of the article

## Background

Malaria is a poverty-related disease and a major public health problem in many sub-Saharan African countries where over 90% of the cases worldwide are found. Pregnant women and children are at higher risk of malaria infection and of developing serious complications related to the disease. Malaria in pregnancy is associated with higher risk of maternal anaemia, low birth weight, spontaneous abortion, stillbirths and maternal mortality [1–3].

There are few treatments with known safety and efficacy for the treatment of malaria in pregnancy. Some anti-malarials known to be efficacious e.g. quinine, are not well tolerated, resulting in poor compliance and higher risk of treatment failures [4]. For other treatments, there are insufficient data as pregnant women are systematically excluded from treatment efficacy studies. Therefore, pregnant women lack proven effective and safe anti-malarial therapies [5]. In such context of limited information, and weighing risks and benefits, the World Health Organization (WHO) allows the use of artemisinin-based combination therapy (ACT) during the second and third trimester of pregnancy [1].

To confirm this expert opinion, we assessed the safety and efficacy of three artemisinin-based combinations, namely mefloquine–artesunate (MQAS), dihydroartemisinin–piperaquine (DHA–PQ) and artemether–lumefantrine (AL), in pregnant women in the second or third trimester with a confirmed *Plasmodium falciparum* malaria infection. This study was part of a multi-centre trial carried out also in Burkina Faso, Ghana and Malawi. Each site tested 3 ACT medicines so that each country dataset could be analysed separately [6] and give detailed site specific data. This paper reports results collected in the Zambian site, Nchelenge, Luapula Province. Knowing that anti-malarial drug's efficacy depends not only on the parasite susceptibility to the drug and on its blood concentration but also on the host's immunity which may be affected by factors such as pregnancy itself, age, parasite density and malaria transmission intensity, the impact of these factors on the treatment outcome were assessed [7, 8]. The results of this study provide the national policy makers the information for a wider and alternative choice of treatments to be used during pregnancy.

## Methods

The trial was conducted between June 2010 and August 2013 in Nchelenge district in Luapula Province, Zambia; one of the provinces where malaria prevalence is higher than the national average (32.1% vs 14.9% in 2012) [9]. Nchelenge district is located in the northern part of the province on the swampy shores of Lake Mweru, borders with the Democratic Republic of Congo (DRC)

and has an estimated population of 178,000 inhabitants, mostly peasant farmers and/or fishermen. The district has three seasons: cool dry winter, hot dry and rainy season. Malaria transmission is perennial because of the presence of *Anopheles funestus* during the dry season and *Anopheles gambiae* in the wet season [10]. In 2012–2013, the entomological inoculation rate (EIR) was estimated at 70 infective bites/person/year [11], and annual malaria incidence at more than 700/1000 person years in the general population and more than 1900/1000 person years among under-five children [12]. The study protocol of this trial is been described in detail elsewhere [13]. Briefly, pregnant women aged at least 15 years, in the second and third trimester, with Hb  $\geq 7$  g/dL, HIV negative, a *P. falciparum* mono-infection of any density and irrespective of having symptoms (excluding illness at time of screening that required hospitalization such as severe malaria) were recruited into the trial and randomized to one of the following treatments: artemether–lumefantrine (AL), mefloquine–artesunate (MQAS) and dihydroartemisinin–piperaquine (DHA–PQ) using a randomization list provided of 300 participants in each arm. Sealed envelopes labeled with patient's unique code and containing treatment allocation were provided according to randomization list. A woman was defined as symptomatic if any of the following were present: fever (temperature  $>37.5$  °C) at baseline with parasitaemia (any density); parasite count  $>2000/\mu\text{L}$ , regardless of symptoms; at least 3 or more of the following symptoms: fever in the past 24 h, weakness/fatigue; muscle and/or joint aches, headache, convulsion, with parasitaemia of any density). Gestational age was estimated by symphysio-fundal height and then confirmed by obstetric ultrasound, including the fetal viability assessment [14, 15]. A blood sample of about 5 mL was collected before treatment for the assessment of haematological and biochemistry parameters. All study drugs were given on days 0, 1 and 2 under direct observation and according to the manufacturer's recommendations (Eurartesim<sup>®</sup> from Sigma-Tau Industrie Farmaceutiche Riunite S.p.A., 40 mg of dihydroartemisinin and 320 mg of piperaquine phosphate per tablet, 3 tablets once per day over 3 days; mefloquine–artesunate from Far-Manguinhos Ministério da Saúde-Fundação Oswaldo Cruz, 100 mg artesunate and 220 mg mefloquine per tablet at 3 tablets once per day over 3 days; Coartem<sup>®</sup> from Novartis Pharma AG, 20 mg artemether and 120 mg lumefantrine per tablet at 4 tablets twice per day over 3 days). After completing the 3-day treatment, patients were asked to return to the clinic for follow up visits on day 3, 7 and then once every week until day 63. At each visit, a medical history, and current clinical signs and symptoms were collected, including information on any adverse events (AE), a blood sample for malaria

smears and dried blood spots (DBS) for later genotyping, for full blood counts (days 7, 14, 28 and 63 only) and for total bilirubin, alanine aminotransferase (ALAT) and creatinine (days 7 and 14 only). Rescue treatment (Quinine) for recurrent infections was according to local national guidelines [16]. (In Zambia, AL is used for treatment of uncomplicated malaria in second and third trimester of pregnancy). At the end of the active follow-up period, women were asked to continue with the antenatal clinic monthly or when they felt unwell until delivery. Recurrent malaria episodes after day 63 were treated with quinine.

Giemsa-stained thick and thin blood films were read independently by two readers, followed by a third reader in case of significant discrepancy. Parasite density was estimated by counting the number of asexual parasites per 200 white blood cells (WBCs) assuming a WBC count of 8000/ $\mu$ L. Total bilirubin, ALAT and creatinine were measured using Flexor Junior biochemistry analyzer. Full blood count was obtained using the Sysmex XT-2000i haematology analyzer. Haemoglobin (Hb) was measured using Hemocue (Angelholm, Sweden). For polymerase chain reaction (PCR) analysis, DBS were prepared on filter paper (Whatman 3MM), and were subsequently transported to the Institute of Tropical Medicine (ITM), Antwerp, Belgium, where centralized genotyping (GluRP, MSP2 and MSP1) was conducted [17]. Samples that failed to produce a result were classified as indeterminate.

Consent was obtained in all cases from study participants and/or legal representative for those between 15 and 17 years old. The study was approved by the Institutional Review Board of the ITM and the Ethics Committee of the Antwerp University Hospital. In addition, the study was also approved by Tropical Diseases Research Centre (TDRC) Ethics Review Committee, the Zambia Medicines Regulatory Authority and Zambia Ministry of Health. The trial was registered at clinicaltrials.gov (NCT00852423).

The primary endpoints were the PCR-adjusted cure rates at day 63 and the safety outcomes as described elsewhere [13]. AEs and serious AEs (SAEs) were recorded and monitored regularly throughout the study by an independent Data and Safety Monitoring Board (DSMB). Secondary endpoints were PCR-unadjusted cure rates at day 63, PCR adjusted and unadjusted time to treatment failure, asexual parasite clearance [18], gametocytaemia (prevalence and density) and Hb changes during follow up.

The study was designed to show that all 3 treatments had similar (PCR-adjusted) cure rates (within 5% difference), with 95% power for each of the 3 pair-wise comparisons and 80% power for the combined hypothesis that all treatments were therapeutically equivalent [13].

Data were captured into an electronic clinical record form (e-CRF) developed in MACRO (InferMed©). A statistical analysis plan was pre-specified before the database lock. For the primary outcome, three analysis populations were used: (1) per-protocol (PP), (2) intention-to-treat (ITT) that excluded lost to follow-up (LTFU)/withdrawals and missing/indeterminate PCR results, and (3) ITT with multiple imputations of LTFU/withdrawals and missing/indeterminate PCR results. The PP analysis was considered as the primary analysis approach. Major protocol violators, defined prior to analysis, were excluded from the PP analysis.

PCR-adjusted treatment failure rate between pair-wise treatment groups was compared using a Chi square test. The 95% exact confidence intervals for the difference in failure rates were determined. If the difference in true (PCR adjusted) failure rates was less than 5%, treatments were considered therapeutically equivalent. Briefly, risk difference was computed for the following groups: AL and DHAPQ; AL and MQAS; and MQAS and DHAPQ. The 95% confidence interval for a proportion was calculated using the Wilson score method. Baseline variables to be included in the Cox-regression model to compute the adjusted hazards of re-infection (new infection) and recrudescence were selected using the log-rank test for equality across strata. The covariates were included if the p value was 0.25 or less except study treatment dosage. The starting covariates were treatment, symptomatic malaria, parasite density, maternal age, gravidity, anaemia, study treatment dosage, gestational age, haematological and biochemical parameters. Covariates in the multivariable model that were not statistically significant ( $>0.05$ ) were dropped off except where literature shows them as important variables [gravidity and gestational age (dropped for new infection)] to have in the final model. The proportion hazard assumptions for the Cox-regression model were evaluated using graphical approach [19].

The hematological and biochemistry profiles by day of follow-up were assessed using box-plots plotted at each time point. Differences in these parameters between treatment arms at each day of follow-up were assessed using Kruskal–Wallis test.

Firth logistic regression was used to assess impact of placental malaria (categorized as placental malaria or no infection) on birth outcomes (still birth, miscarriage, premature live delivery, intrauterine fetal death and term live birth) for separation and ‘empty cells’ in the model. A “stillbirth” was defined as a baby born dead after 24 weeks gestation; a baby born dead before 24 weeks gestation or during the 24th week was considered a “miscarriage”. “Preterm live born” was defined as a delivery before 37 weeks of gestation following echography. This

was calculated as date of delivery minus date of echography (in weeks) plus gestational age determined through echography. Or based on the Ballard score which determines gestational age based on the sum of neuromuscular and physical scores [20]. A neonate with a score of 30 or lower was labeled “preterm” using this method. Logistic regression was used to assess impact of placental malaria (categorized as placental malaria or no infection) on birth weight. It was also used to assess risk factors for malaria. Placental malaria was classified as acute infection; chronic infection; past infection or no infection and analysed as binary outcome, placental malaria or no infection. For safety, all individuals having received at least one treatment dose were included and analysed in terms of proportions with Chi square test for the difference. Delivery related AEs, caesarean sections or reasons for caesarean sections and pregnancy outcomes were not included in the AE report. Also SAEs which were pregnancy related were excluded.

## Results

A total of 1722 pregnant women were screened for malaria infection, regardless of symptoms. Out of these, 900 met the inclusion criteria and were randomized to one of the three study arms: 300 to AL, 300 to MQAS and 300 to DHAPQ. The ITT analysis included 900 pregnant women. The PP analysis included 729 women, i.e. 258 in the AL, 235 in the MQAS and 236 in DHAPQ arms (Fig. 1). The main reasons for exclusion from the PP analysis were lost to follow-up and withdrawals. The baseline characteristics (age, gravidity, parasite density, Hb, symptoms) of the excluded patients were similar to those included in the PP analysis.

Baseline characteristics were similar between treatment arms (Table 1); all gravidities were equally represented and the median gestational age by obstetric ultrasound (echography) was 25.0 weeks [IQR: 20.5–29.0] and similar between the treatment arms. The median parasite density was 1540/ $\mu$ L (IQR: 480–4540) and similar between the treatment arms [AL 1360/ $\mu$ L (IQR: 480–4280), MQAS 1610/ $\mu$ L (IQR: 540–4340) and DHAPQ 1640/ $\mu$ L (IQR: 520–4880)]; over 40% of women had a parasite density  $\geq$ 2000/ $\mu$ L and 49% were symptomatic.

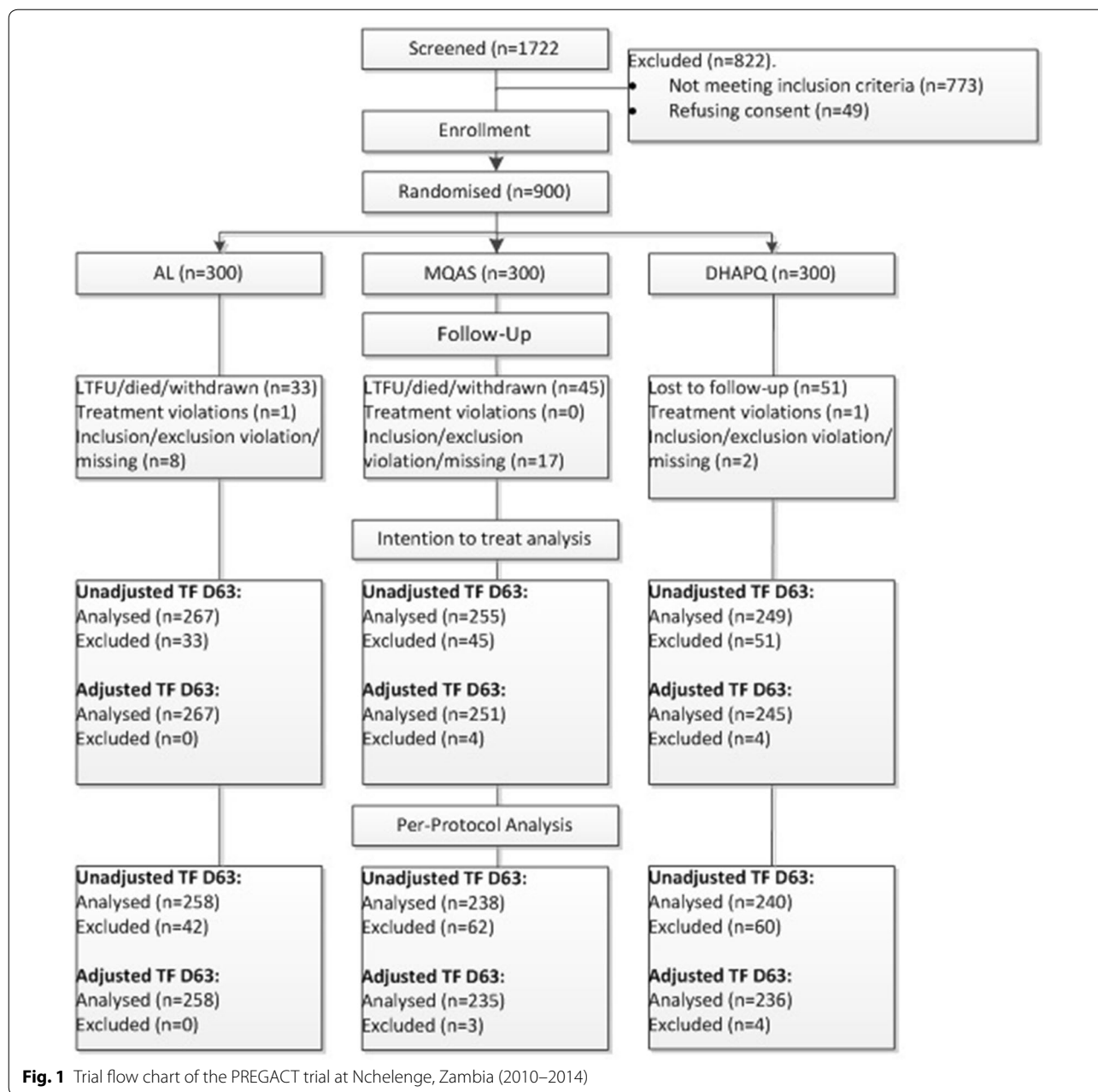
The gametocyte prevalence at baseline was low, 2.3% (95% CI 1.1–4.7) in AL, 1.3% (95% CI 0.5–3.4) in DHAPQ and 0% (95% CI 0.0–1.3) in MQAS. The range of the gametocyte density, if present, was 40–440 gametocytes/ $\mu$ L. Gametocyte carriage remained low during the follow-up period and only appeared in AL (4/297; 1.3%) and DHAPQ (6/292; 2.1%) arms and none in MQAS. Use

of preventive measures, i.e. ITN and IPTp, at recruitment was low (Table 1).

In the PP analysis, the graphs for the global proportional hazards (PH) assumptions testing for treatment failure adjusted for several variables (treatment, anaemia, gestational age, gravidity, parasite density, maternal age and malaria symptoms at baseline) were roughly parallel and met the PH assumptions. The day 63 PCR-adjusted treatment failure rate was 4.7% (12/258) (95% CI 2.7–8.0) for AL, 1.3% (3/235) (95% CI 0.4–3.7) for MQAS and 0.8% (2/236) (95% CI 0.2–3.0) for DHAPQ (Table 2), with significant risk difference between AL and DHAPQ ( $p = 0.01$ ) and between AL and MQAS ( $p = 0.03$ ) treatments. Figure 2 which shows the time to PCR adjusted and unadjusted treatment failure confirms this difference. Figure 3 presents the risk difference computed for the pairwise comparisons conducted for PCR-adjusted and unadjusted treatment success rates at day 63. AL showed somewhat higher (about 3%) PCR-adjusted treatment failures. Therapeutic equivalence could be shown for MQAS and DHAPQ but not for AL as compared to the other 2 treatments. The ITT analysis gave similar results (Table 2). When considering recrudescence, i.e. treatment failure due to the reappearance of the same strain as identified by PCR analysis, its hazard was higher in patients treated with AL than in those treated with DHAPQ (HR: 10.47; 95% CI 2.18–50.19;  $p < 0.01$ ) although the estimates were unstable probably due to the small or low number of observations. The hazard was not significantly different in the MQAS than in the DHAPQ arm (HR: 1.56; 95% CI 0.26–9.38;  $p = 0.63$ ) (Table 3). The hazard of treatment failure was higher in younger women than in those over 20 years (HR: 5.07; 95% CI 1.01–25.43;  $p = 0.05$ ). Higher parasite density at baseline was associated with a higher hazard of PCR-adjusted treatment failure (HR: 3.35; 95% CI 1.07–10.45;  $p = 0.04$ ) (Table 3).

New infections were more frequent in the AL (HR: 4.71; 95% CI 3.10–7.15;  $p < 0.01$ ) and MQAS (HR: 1.59; 95% CI 1.02–2.46;  $p = 0.04$ ) arms compared to the DHAPQ arm. The risk of re-infections was higher in women between 15 and 20 years (HR: 1.78; 95% CI 1.26–2.52;  $p < 0.01$ ) than in women older than 20 years. Anaemic mothers had a higher hazard of new infection during follow up (HR: 1.56; 95% CI 1.05–2.32;  $p = 0.03$ ). Similarly, mothers with higher parasite density a higher hazard of new infection (HR: 1.46; 95% CI 1.09–1.94;  $p = 0.01$ ). All the other risk factors analysed were not significantly associated with new infection (Table 3).

Placental malaria infection (acute and chronic) was similar between the treatment arms ( $p = 0.47$ ) (Table 2). Treatment allocation, AL and MQAS (DHAPQ as



reference group), was not significantly related to placental malaria (OR 1.22; 95% CI 0.45–3.31 and OR 0.76; 95% CI 0.34–1.72, respectively) ( $p = 0.58$ ). Women with recrudescence and new infections were at higher risk of placental malaria (OR 4.46; 95% CI 1.01–19.70;  $p = 0.05$ ).

Placental malaria was significantly higher in women between 15 and 20 years (OR 4.56; 95% CI 1.48–14.04;  $p = 0.01$ ) than in women older than 25 years. Placental malaria was significantly associated with low birth weight (<2500 g) (OR 4.37; 95% CI 1.04–18.39;  $p = 0.04$ ) but not

**Table 1 Baseline characteristics of pregnant women with malaria episode Nchelenge, Zambia (2010–2014)**

	AL (N = 300)	MQAS (N = 300)	DHAPQ (N = 300)
Age (years): median (IQR)	20 (18–24)	19 (18–24)	20 (18–24)
Symptomatic malaria (%)	46.0	48.7	52.7
Fever (temperature $\geq$ 37.5 °C) (%)	2.0	3.3	3.7
Parasite density >2000/ $\mu$ L (%)	41.0	42.7	45.7
At least 3 symptoms <sup>a</sup> (%)	11.0	12.3	12.0
Gametocytes present (%)	2.3	0	1.3
Parasite density (/ $\mu$ L): median (IQR)	1360 (480–4280)	1610 (540–4340)	1640 (520–4880)
Haemoglobin (g/dL): median (IQR)	10.0 (9.1–11.0)	10.0 (9.0–10.9)	10.0 (9.2–10.9)
Gravidity			
1st Pregnancy (%)	33.3	35.7	31.3
2nd Pregnancy (%)	30.3	30.3	32.0
3rd Pregnancy or more (%)	36.3	34.0	36.7
Gestational age <sup>b</sup>			
2nd Trimester (%)	50.0	50.0	43.7
3rd Trimester (%)	50.0	50.0	56.3
Bed net used before study entry (%)	30.7	28.7	27.3
ITN used before study entry <sup>c</sup> (%)	25.3	21.0	22.7
IPT use (before day 0) (%)	9.7	7.0	11.7

<sup>a</sup> At least 3 or more of the following symptoms: fever in the past 24 h, weakness/fatigue; muscle and/or joint aches, headache, convulsion, with parasitaemia of any density

<sup>b</sup> 2nd Trimester were patients  $\leq$ 24 weeks gestation and 3rd trimester >24 weeks gestation

<sup>c</sup> Women were provided with ITN at study start

with adverse birth outcomes (stillbirth, preterm, miscarriage, intrauterine fetal death). (OR 5.47; 95% CI 0.33–90.62;  $p = 0.24$ ).

The study drugs were generally safe with a total of 7 SAEs for mother. A woman treated with MQAS died 41 days after treatment, probably because of meningitis. There were three SAEs in DHAPQ [low haemoglobin, measles and sickle cell mother in haemolytic crisis (vaso-occlusive)]. An additional SAE in the MQAS arm, severe vomiting, was considered related to study treatment and recovered completely. The other two in MQAS were asthmatic attack and pneumonia. They all recovered.

The proportion of women with AEs in each treatment arm (82.7% in AL, 84.9% in MQAS and 79.3% in DHAPQ) were not significantly different ( $p = 0.19$ ) (Table 4). The drug-related AEs (dizziness, nausea, headache, vomiting and asthenia) were more common in the MQAS arm (67.9%; 95% CI 62.4–72.9) than the AL (12.7%; 95% CI 9.3–16.9) and DHAPQ arms (23.3%; 95% CI 18.9–23.4) ( $p < 0.01$ ). There were significant differences in median Hb at day 7 between AL (10.1 g/dL

versus MQAS (9.9 g/dL),  $p = 0.01$ ; and AL vs DHAPQ (9.9 g/dL),  $p = 0.04$ ; and at day 63 between AL (10.7 g/dL) vs DHAPQ (11.0 g/dL),  $p = 0.01$  (Fig. 4). There were no significant differences in systolic and diastolic blood pressures between the treatment arms ( $p = 0.07$  and  $p = 0.20$  respectively). The median biochemical (creatinine, ALAT and bilirubin) safety values between treatment groups did not differ significantly during the follow-up period ( $p = 0.69$ ,  $p = 0.92$  and  $p = 0.88$  respectively) (Fig. 4).

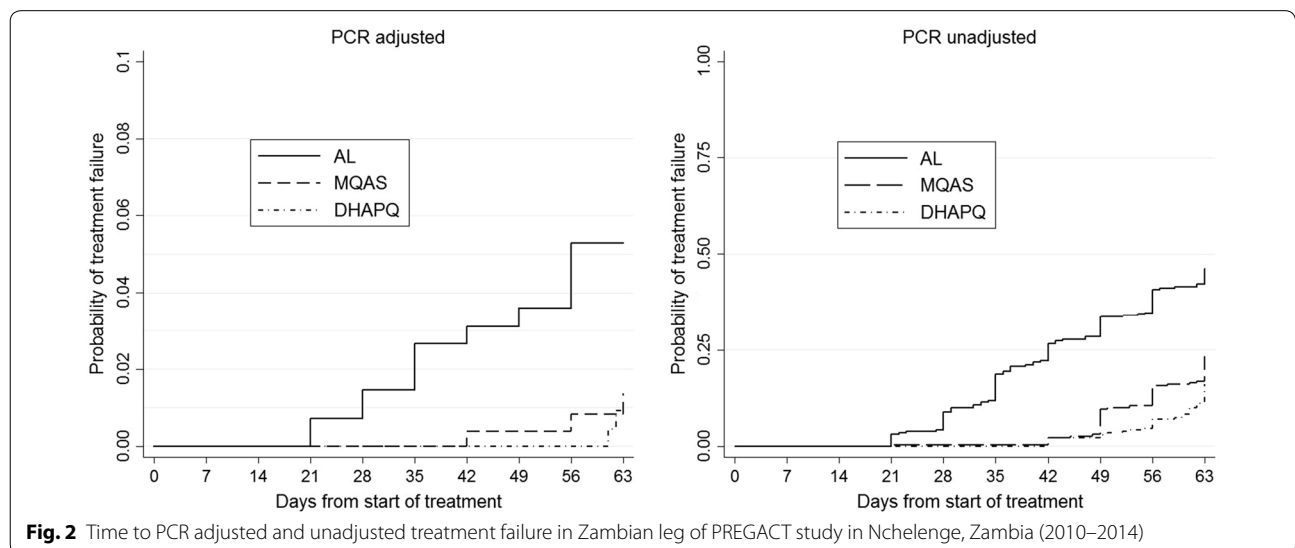
There were 21 stillbirths: 8 (2.7%) in AL, 3 (1.0%) in MQAS and 10 (3.3%) in the DHAPQ arms and three miscarriages (two in MQAS, one in DHAPQ arms, and none in the AL arm). The preterm delivery was 4.3% in AL, 2.0% in MQAS and 3.3% in the DHAPQ arm. There were 15 congenital malformations [3 cleft lip and palate, one club foot, one ear tag, 6 polydactyl, one syndactyl, one umbilical hernia, one depression on parietal bone, one tongue tie) observed (4 (1.3%) in each of DHAPQ and MQAS arms and 7 (2.3%) in AL arm] with no significant difference between the arms ( $p = 0.54$ ).

**Table 2 Malaria treatment outcome of pregnant women with malaria episode in Nchelenge, Zambia (2010–2014)**

	AL (N = 300)	MQAS (N = 300)	DHAPQ (N = 300)
<i>Efficacy outcomes, n (%)</i>			
Early treatment failure <sup>a</sup>	0	0	1
Late clinical and parasitological treatment failure <sup>a</sup>	126	60	36
Recrudescence	12	5	2
New infection	114	55	34
Adequate clinical and parasitological response <sup>a</sup>	132	175	199
Cannot be determined	42	65	64
Did not meet inclusion/exclusion criteria/missing	8	17	8
Treatment violations	1	0	1
No PCR sample	0	3	4
LTFU/died/withdrawn	33	45	51
<i>Treatment failure rate % (95% CI)</i>			
PP-analysis: PCR-unadjusted	48.4 (42.4–54.5)	23.9 (19.0–29.8)	16.3 (12.1–21.4)
PP-analysis: PCR-adjusted	4.7 (2.7–8.0)	1.3 (0.4–3.7)	0.8 (0.2–3.0)
ITT-analysis: PCR-unadjusted	47.6 (41.7–53.5)	25.1 (20.2–30.8)	16.5 (12.4–21.6)
ITT-analysis: PCR-adjusted	4.9 (2.9–8.2)	2.0 (0.9–4.6)	1.2 (0.4–3.5)
Placental malaria	N = 235	N = 228	N = 227
Acute infection, n (%)	3 (1.3)	2 (0.9)	0 (0.0)
Chronic infection, n (%)	75 (31.9)	70 (30.7)	67 (29.5)
Past infection, n (%)	148 (63.0)	139 (61.0)	146 (64.3)
No infection, n (%)	9 (3.8)	17 (7.5)	14 (6.2)

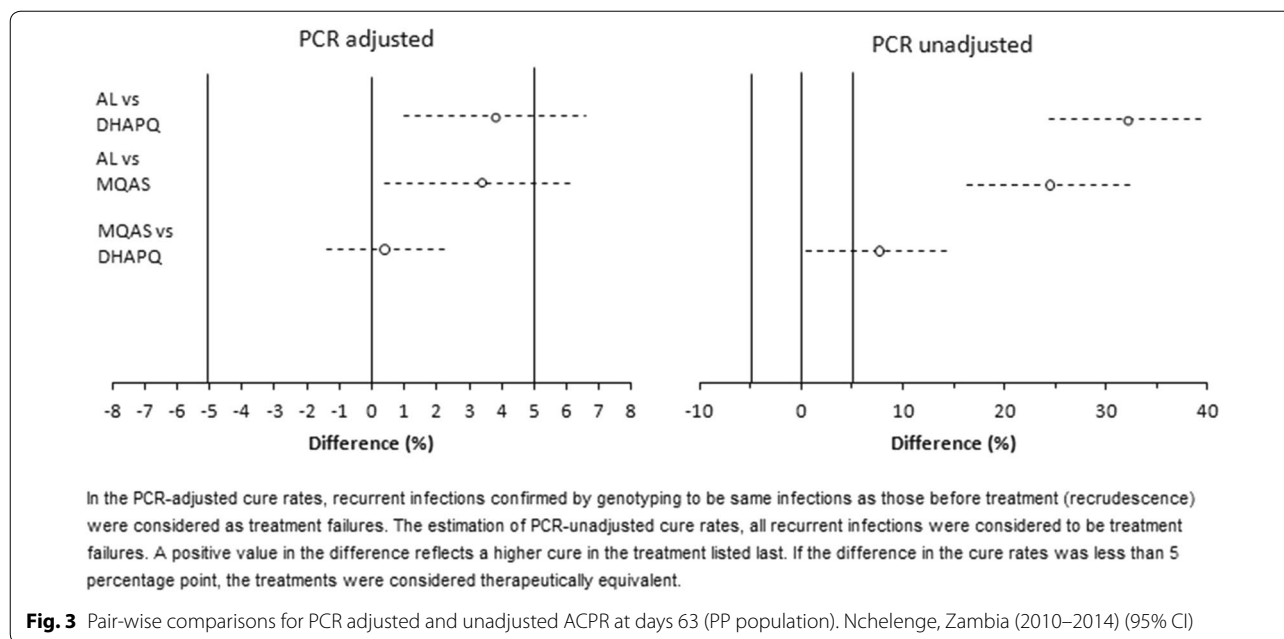
LTFU Lost to follow-up; PP per-protocol; ITT intention-to-treat

<sup>a</sup> Early Treatment Failure (ETF) defined as one of the following: (i) development of danger signs or severe malaria or worsening of clinical conditions on day 0, day 1, day 2 or day 3, in the presence of parasitaemia, (ii) parasitaemia on day 3  $\geq$  count on day 0, (iii) parasitaemia on day 3 and fever (axillary temperature  $\geq 37.5^\circ\text{C}$ ). Late clinical failure (LCF) defined as (i) development of danger signs or severe malaria or worsening of clinical conditions on any day after day 3 in the presence of parasitaemia, without previously meeting any of the criteria of Early Treatment Failure or (ii) presence of parasitaemia and fever on any day after day 3, without having previously meet the criteria of ETF. Late parasitological failure (LPF) defined as presence of parasitaemia on any day from day 4 onwards and axillary temperature  $< 37.5^\circ\text{C}$ , without previously meeting any of the criteria of ETF or LCF. Adequate clinical and parasitological response (ACPR) defined as absence of parasitaemia at the end of the follow up period (day 63), irrespective of axillary temperature without previously meeting any of the criteria of early and late treatment failure. In the PCR-adjusted estimates, patients with late asexual parasite reappearance (with or without fever) are considered ACPR if the PCR analysis shows a new infection rather than a recrudescence. Placental malaria classified as: acute infection (parasite present, malaria pigment absent); chronic infection (parasites and malaria pigment present); past infection (no parasite but pigment present); no infection (both parasites and malaria pigment absent)



**Fig. 2** Time to PCR adjusted and unadjusted treatment failure in Zambian leg of PREGACT study in Nchelenge, Zambia (2010–2014)





**Discussion**

With the range of 0.8–4.7% recrudescences, the three artemisinin-based combinations used for the treatment of uncomplicated malaria in the second and third trimester of pregnancy were efficacious, in an area of high endemicity in Nchelenge district, Zambia. Therapeutic equivalence could be shown for MQAS and DHAPQ but not for AL as compared to the other two treatments. In Nchelenge Zambia, there were significantly more treatment failures in the AL arm compared to the other two arms, though AL efficacy was still above the 90% cure threshold recommended by WHO for adopting new anti-malarial treatments as policy [21]. In Uganda, in an area with malaria transmission as high as that in Nchelenge, AL administered to pregnant women was also extremely efficacious, with even less treatment failures (0.7%) than in this trial [22].

In Zambia, ACT has been shown to have excellent cure rates among children and adults [23, 24]. Their efficacy, determined by the drug partnering an artemisinin derivative, namely mefloquine, lumefantrine, and piperaquine for the treatment tested in this study, usually exceeds 95% [25]. However, there have been reports pointing to the effect of the physiological changes during pregnancy, e.g. as increased volume of distribution, reduced gut motility, possibly altering drug disposition and metabolism, and thus leading to incorrect dosing [26–28]. This does not seem to apply to the results observed in Nchelenge

as treatment efficacy was very high, possibly due to the underlying anti-malarial immunity in the Nchelenge district population, including pregnant women, due to the intense malaria transmission and high exposure to infection. The importance of pre-existing immunity on the therapeutic response is also supported by the association between treatment failure (both new infections and recrudescences) and young age [29]. Also transmission intensity may not influence the risk difference between treatments but may influence individual failure rates.

Pregnant women have an increased susceptibility to malaria, and this susceptibility is greatest in the first pregnancy (primigravidae) [30]. The decreasing prevalence and intensity of infection in successive pregnancies mirrors the acquisition of antibody immunity to the variant surface antigens, expressed on the parasitized red blood cells infecting the placenta. Antibodies titres against VSA-PAM are associated to clinical outcomes [31, 32] and opsonizing antibodies that allow phagocytic clearance of infected erythrocytes are associated with a better treatment outcome in pregnant women [33]. Results from Nchelenge and other studies suggest that antibodies to VSA-PAM might have important roles in determining both pregnancy outcomes and the effectiveness of anti-malarial drugs in pregnancy. Other factors such as cellular immunity, cytokines, and hormonal changes might also influence outcomes in pregnancy [29] and also affect treatment outcome.

**Table 3 Risk factors associated with recrudescence and new infection after anti-malarial treatment in pregnant women in Nchelenge, Zambia (2010–2014)**

	Hazard ratio	95% CI	p value
<i>Risk factors associated with recrudescence</i>			
Treatment			
AL	10.47	2.18–50.19	
MQAS	1.56	0.26–9.38	
DHAPQ	1	1 (reference)	<0.01 <sup>a</sup>
Maternal age (15–19 years)	5.07	1.01–25.43	0.05
Gestational age			
2nd Trimester	2.35	0.76–7.40	
3rd Trimester	1	1 (reference)	0.14
Gravidity			
Primigravidae	1.44	0.51–4.38	
Multigravidae	1	1 (reference)	0.47
Parasite density (>2000/μL)	3.35	1.03–10.10	0.04
Study treatment dosage (mg/kg for 3 days)	2.10	0.75–5.89	0.16
<i>Risk factors associated with malaria new infection</i>			
Treatment			
AL	4.71	3.10–7.15	
MQAS	1.59	1.02–2.46	
DHAPQ	1	1 (reference)	<0.01 <sup>a</sup>
Maternal age (15–19 years)	1.78	1.26–2.52	<0.01 <sup>a</sup>
Parasite density (>2000/μL)	1.46	1.09–1.94	0.01
Anaemia (Hb <11.0 g/dL)	1.56	1.05–2.32	0.03
Gravidity			
Primigravidae	1.11	0.80–1.54	
Multigravidae	1	1 (reference)	0.52
Study treatment dosage (mg/kg for 3 days)	1.00	0.74–1.37	0.98

<sup>a</sup> p value of the joint effect of treatment

In Nchelenge, pregnant women treated with AL had a higher risk of new infection than the other two treatments. This is probably due to the shorter post-treatment prophylaxis offered by lumefantrine which is eliminated more rapidly [34] than piperazine [35]. When the artemisinin component is rapidly eliminated, a new infection would encounter only the partner drug and this may explain the association between the risk of new infection and treatment given. It indirectly confirms that the distinction between recrudescence and new infection and genotyping is reasonably reliable. Considering that Nchelenge women who experienced a new infection during follow up had a higher risk of acute or chronic

placenta malaria, both conditions associated to the delivery of low birth weight babies, a longer post-treatment prophylaxis would be extremely important in this area of intense malaria transmission. Therefore, DHAPQ could be preferentially chosen for such conditions, while AL could be used where transmission is low.

Recrudescence may easily occur in the context of emergence or spread of parasite resistance to a given anti-malarial when the partially efficacious anti-malarial may fail to clear the resistant strain or simply select for mutant parasites. In Zambia, artemisinin resistance has not been reported yet. Recrudescence can be caused by the parasites surviving the effect of a shorter-acting ACT [6], in this case AL. Low study drug dosage may play an important role in recrudescence in the AL group as the point estimate indicates low study drug dosage suggests a double independent risk for recrudescence. However, the power of the study was to assume a clear association. Besides parasite sensitivity to drug and the level of the concentration of the drug in the blood, host immunity and parasite density at presentation contributes to positive treatment outcome. Immunity can be affected by different factors, including age, body temperature, pregnancy and parity [29, 36]. The Nchelenge study has shown that younger women and high malaria parasite density at baseline are associated with recrudescence and could not demonstrate a significant association between treatment failure and parity.

Other studies have shown that high parasite density at presentation is associated with treatment failure [30–33, 36–38] and that age, temperature and parasite density are predictors of anti-malarial treatment failure [36].

The three artemisinin-based combinations tested are generally safe in second and third trimester of pregnancy in Zambia. Patients on MQAS had higher rates of treatment-related AE. Dizziness was the most common, followed by vomiting and weakness. Dizziness has been reported even in other studies as related to MQ treatment [39]. On the pregnancy outcomes, there was no significant difference between treatments for stillbirths, miscarriages, congenital malformations and prematurity, a finding similar to those of other studies on AL [22, 40, 41], mefloquine [5] and DHAPQ [42].

This trial was done in an area where the majority of the population practice farming and fishing as a source of livelihood and they migrate to farming areas for a considerable period [43], possibly explaining the relatively high number of lost-to-follow-ups and withdrawals.

**Table 4 Pregnant women with an adverse event till 63 days having received at least one malaria treatment dose in Nchelenge, Zambia (2010–2014)**

Safety population	AL (N = 300)	MQAS (N = 299)	DHAPQ (N = 300)
At least one AE, n (%)	248 (82.7)	254(84.9)	238 (79.3)
Most common AEs <sup>a</sup> , n (%)			
Headache	136 (45.3)	142 (47.5)	134 (44.7)
Nausea	8 (2.7)	39 (13.0)	23 (7.7)
Cough	99 (33.0)	116 (38.8)	120 (40.0)
Asthenia	36 (12.0)	69 (23.1)	49 (16.3)
Dizziness	11 (3.7)	88 (29.4)	17 (5.7)
Vomiting	14 (4.7)	47 (15.7)	26 (8.7)
Abdominal pain	73 (24.3)	71 (23.7)	70 (23.3)
Musculoskeletal pain	43 (14.3)	47 (15.7)	30 (10.0)
Backache	51 (17.0)	40 (13.4)	28 (9.3)
Influenza	24 (8.0)	32 (10.7)	40 (13.3)
At least one related AE, n (%)	54 (18.0)	127 (42.5)	72 (24.0)
Most common related AEs <sup>a</sup> , n (%)			
Dizziness	5 (1.7)	72 (24.1)	8 (2.7)
Nausea	5 (1.7)	34 (11.4)	16 (5.3)
Vomiting	5 (1.7)	43 (14.4)	17 (5.7)
Asthenia	9 (3.0)	38 (12.7)	14 (4.7)
Headache	14 (4.7)	16 (5.4)	15 (5.0)
SAE n (%)	0	4 (1.3)	3 (1.0)
Related SAE, n (%)	0	1 (0.3)	0
At least one SAE which caused death, n (%)	0	1 (0.3)	0
Birth outcomes, n (%)			
Still birth	8 (2.8)	3 (1.1)	10 (3.7)
Miscarriage	0 (0)	2 (0.7)	1 (0.4)
Prematurity	13 (4.6)	6 (2.2)	10 (3.7)
Congenital abnormality	7 (2.6)	4 (1.5)	4 (1.6)

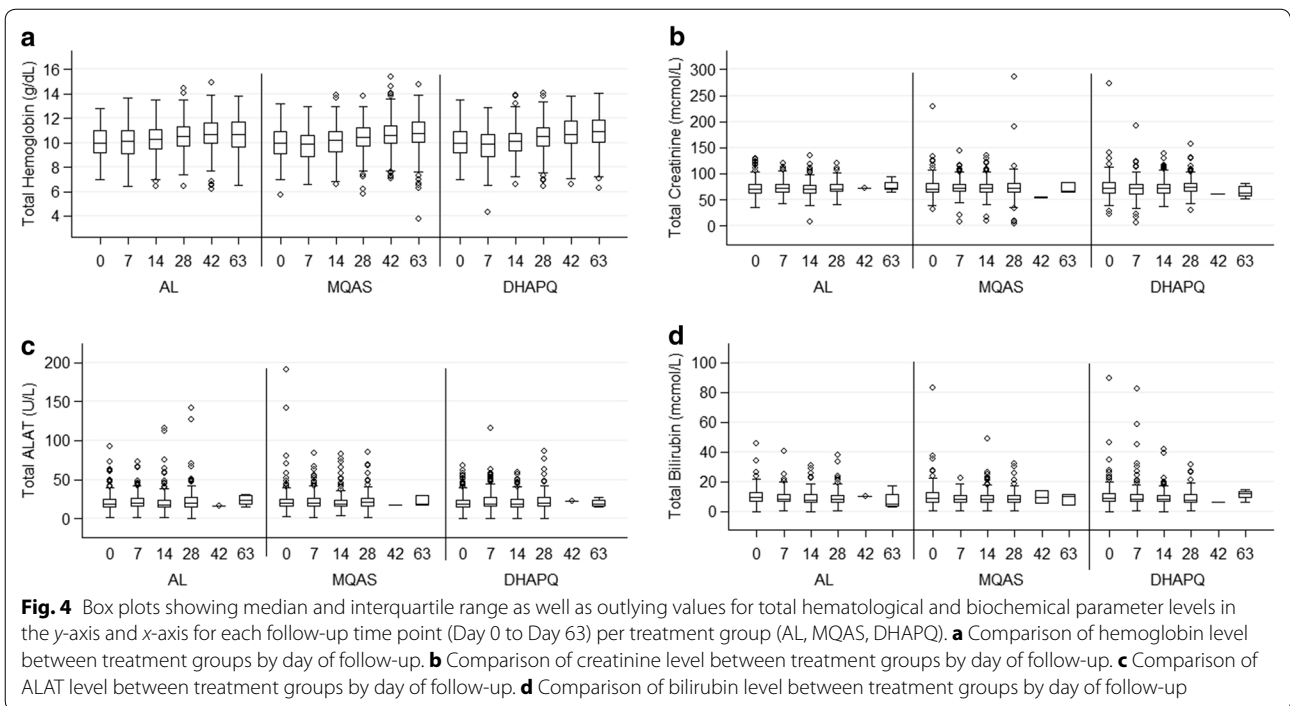
AE adverse event; SAE serious adverse event; Related SAE serious adverse event which the investigator classified as possibly, probably or definitely related to study drug

<sup>a</sup> AEs and related AEs recorded in, respectively, at least 10 and 5% of patients in any treatment group

Nevertheless, considering that the post-treatment follow up was up to day 63 and that pregnant women are a group particularly difficult to follow, the sample size had been estimated assuming a dropout rate of 20%, while the actual figure was 16%. Such a relatively high dropout rate is unlikely to have had a major influence on the trial's results as the patients excluded and those included did not differ significantly on their baseline characteristics.

## Conclusions

The study has shown that both AL and DHAPQ were well tolerated in second and third trimester pregnant women, with low treatment failures. MQAS was less well tolerated than the other two treatments though it had similar low treatment failure. DHAPQ seems to be well tolerated and has low treatment failure with a longer post-treatment prophylaxis. As new infections can be prevented by



a long acting partner drug to the artemisinins, DHAPQ should be preferred where transmission is intense as in Nchelenge while and in areas of low transmission intensity AL or MQAS may be used.

**Abbreviations**

ACPR: adequate clinical and parasitological response; AE: adverse events; AL: artemether–lumefantrine; ACT: artemisinin-based combination treatment; DHAPQ: dihydroartemisinin–piperaquine; ETF: Early Treatment Failure; e-CRF: electronic clinical record form; Hb: haemoglobin; HR: hazard ratio; ITT: intention-to-treat; IQR: interquartile range; ITN: insecticide treated net; LTFU: lost to follow-up; MQAS: mefloquine–artesunate; OR: odds ratio; PP: per-protocol; PCR: polymerase chain reaction; SAE: serious adverse event.

**Authors’ contributions**

MN, UDA and JPV proposed the ideas of the paper. MN, UDA and JPV were major contributors to the writing of the paper. MN and JB contributed to data analysis. MN, MM, JBBK, SH, JB, WK, JMM, DM, JPV, UDA reviewed the manuscript. MN is the corresponding author/main contact for this paper. All authors read and approved the final manuscript.

**Author details**

<sup>1</sup> Department of Clinical Sciences, Tropical Diseases Research Centre, P.O Box 71769, Ndola, Zambia. <sup>2</sup> Global Health Institute, University of Antwerp, Antwerp, Belgium. <sup>3</sup> Institute of Tropical Medicine, Antwerp, Belgium. <sup>4</sup> Medical Research Council Unit, Serekunda, Gambia. <sup>5</sup> London School of Hygiene and Tropical Medicine, London, UK.

**Acknowledgements**

We would like to thank the following people at the Institute of Tropical Medicine, Antwerp, Belgium, for their contribution: Diana Arango, Yves Claeys, Celline Schurmans, Maaike de Crop, Joris Menten, Raffaella Ravinetto, Kamala Thriemer and Chantal Van Overmeir. Thanks also to Prof. Bruno Gryseels, director of the Institute of Tropical Medicine, for his continuous support. In addition, we would like to thank the members of the Data Safety and Monitoring Board. We thank the Ministry of Health Zambia, the Luapula Provincial Medical

Office, Nchelenge District Medical office and St. Paul’s mission hospital. We thank Nchelenge District Medical office and St. Paul’s mission hospital staff for the help rendered in data collection. We also thank TDR staff for their work in the study.

We sincerely thank the mothers and their babies for participating in the study.

**Competing interests**

No competing interests stated except UDA who reports receiving grant support from Sigma-Tau Industrie Farmaceutiche Riunite.

**Availability of data and materials**

The data that support the findings of this study are available from Institute of Tropical Medicine, Antwerpen, Belgium Clinical Trials Unit but restrictions apply to the availability of these data, which were used under license for the current study, and so are not publicly available. Data are however available from the authors upon reasonable request and with permission of Institute of Tropical Medicine, Antwerpen, Belgium (<http://www.itg.be>).

**Ethics approval and consent to participate**

This study was approved by the Ethics Committee of the Antwerp University Hospital [Universitair Ziekenhuis Antwerpen (UZA)] and Tropical Diseases Research Center Ethics Committee in Zambia. All study participants consented to participate in the study.

**Funding**

European and Developing Countries Clinical Trials Partnership, Email: [infor@edctp.org](mailto:infor@edctp.org) Web: <http://www.edctp.org>; and by the Malaria in Pregnancy Consortium, which is funded through a grant from the Bill and Melinda Gates Foundation to the Liverpool School of Tropical Medicine (LSHTM)—United Kingdom; Directorate-General for Development Cooperation (DGDC)—Belgium, Netherlands-African Partnership for Capacity Development and Clinical interventions Against Poverty-related diseases (NACCAP)—Netherlands, and Medical Research Council (MRC)—UK.

The funding body had no role in the design of the study and collection, analysis, and interpretation of data and in writing the manuscript should be declared.

## Publisher's Note

Springer Nature remains neutral with regard to jurisdictional claims in published maps and institutional affiliations.

Received: 22 December 2016 Accepted: 9 May 2017

Published online: 16 May 2017

## References

- WHO. Guidelines for the treatment of malaria. 3rd ed. 2015. Geneva: World Health Organisation.
- Luxemburger C, Ricci F, Nosten F, Raimond D, Bathet S, White NJ. The epidemiology of severe malaria in an area of low transmission in Thailand. *Trans R Soc Trop Med Hyg*. 1997;91:256–62.
- Steketee RW, Wirima JJ, Slutsker L, Heymann DL, Breman JG. The problem of malaria and malaria control in pregnancy in sub-Saharan Africa. *Am J Trop Med Hyg*. 1996;55(1 Suppl):2–7.
- Adegnika AA, Breitling LP, Agnandji ST, Chai SK, Schutte D, Oyakhrome S, et al. Effectiveness of quinine monotherapy for the treatment of *Plasmodium falciparum* infection in pregnant women in Lambarene, Gabon. *Am J Trop Med Hyg*. 2005;73:263–6.
- Nosten F, McGready R, D'Alessandro U, Bonell A, Verhoeff F, Menendez C, et al. Antimalarial drugs in pregnancy: a review. *Curr Drug Saf*. 2006;1:1–15.
- Pekeyi D, Ampromfi AA, Tinto H, Traore-Coulibaly M, Tahita MC, Valea I, et al. Four artemisinin-based treatments in African pregnant women with malaria. *N Engl J Med*. 2016;374:913–27.
- Fontanet AL, Walker AM. Predictors of treatment failure in multiple drug-resistant falciparum malaria: results from a 42-day follow-up of 224 patients in eastern Thailand. *Am J Trop Med Hyg*. 1993;49:465–72.
- Rogerson SJ, Wijesinghe RS, Meshnick SR. Host immunity as a determinant of treatment outcome in *Plasmodium falciparum* malaria. *Lancet Infect Dis*. 2010;10:51–9.
- National Malaria Control Center. Zambia malaria indicator survey. 2012. Lusaka, Zambia. [http://www.nmcc.org.zm/files/FullReportZambiaMIS2012\\_July2013\\_withsigns2.pdf](http://www.nmcc.org.zm/files/FullReportZambiaMIS2012_July2013_withsigns2.pdf). Accessed 06 Aug 2015.
- Pinchoff J, Chaponda M, Shields T, Lupiya J, Kobayashi T, Mulenga M, et al. Predictive malaria risk and uncertainty mapping in Nchelenge District, Zambia: evidence of widespread, persistent risk and implications for targeted interventions. *Am J Trop Med Hyg*. 2015;93:1260–7.
- Das S, Muleba M, Stevenson JC, Norris DE. Habitat partitioning of malarial vectors in Nchelenge District, Zambia. *Am J Trop Med Hyg*. 2016;94:1234–44.
- Nchelenge District Office. Health Management Information System. Nchelenge, Luapula Province, Zambia. 2016.
- Nambozi M, Mulenga M, Halidou T, Tagbor H, Mwapasa V, Phiri LK, et al. Safe and efficacious artemisinin-based combination treatments for African pregnant women with malaria: a multicentre randomized control trial. *Reprod Health*. 2015;12:5.
- Butt K, Lim K. Determination of gestational age by ultrasound. *J Obstet Gynaecol Can*. 2014;36:171–83.
- Salomon LJ, Alfirevic Z, Bilardo CM, Chalouhi GE, Ghi T, Kagan KO, et al. ISUOG practice guidelines: performance of first-trimester fetal ultrasound scan. *Ultrasound Obstet Gynecol*. 2013;41:102–13.
- National Malaria Control Center M. Guidelines for the diagnosis and treatment of malaria in Zambia. 4th ed. 2014. Lusaka, Zambia. [http://www.nmcc.org.zm/files/GuidelinesonDiagnosisandTreatmentofMalariainZambia\\_4thEd\\_2-24-14.pdf](http://www.nmcc.org.zm/files/GuidelinesonDiagnosisandTreatmentofMalariainZambia_4thEd_2-24-14.pdf). Accessed 07 Aug 2015.
- WHO. Methods and techniques for clinical trials on antimalarial drug efficacy: genotyping to identify parasite populations. 2008. Geneva: World Health Organization. <http://www.who.int/malaria/resistance>. Accessed 06 Aug 2015.
- WWARN. Clinical Module, WWARN 2012: data management and statistical plan. version 1.2. 2012. <http://www.wwarn.org/sites/default/files/ClinicalDMSAP.pdf>. Accessed 06 Aug 2015.
- Chan YH. Biostatistics 203. Survival analysis. *Singap Med J*. 2004;45(6):249–56.
- Ballard JL, Khoury JC, Wedig K, Wang L, Eilers-Walsman BL, Lipp R. New Ballard Score, expanded to include extremely premature infants. *J Pediatr*. 1991;119:417–23.
- WHO. Methods for surveillance of antimalarial drug efficacy. 2009. Geneva: World Health Organization. [http://whqlibdoc.who.int/publications/2009/9789241597531\\_eng.pdf](http://whqlibdoc.who.int/publications/2009/9789241597531_eng.pdf). Accessed 06 Aug 2015.
- Piola P, Nabasumba C, Turyakira E, Dhorda M, Lindegardh N, Nyehangane D, et al. Efficacy and safety of artemether-lumefantrine compared with quinine in pregnant women with uncomplicated *Plasmodium falciparum* malaria: an open-label, randomised, non-inferiority trial. *Lancet Infect Dis*. 2010;10:762–9.
- Four Artemisinin-Based Combinations. (4ABC) Study Group. A head-to-head comparison of four artemisinin-based combinations for treating uncomplicated malaria in African children: a randomized trial. *PLoS Med*. 2011;8:e1001119.
- Nambozi M, Van Geertruyden JP, Hachizovu S, Chaponda M, Mukwamataba D, Mulenga M, et al. Safety and efficacy of dihydroartemisinin-piperazine versus artemether-lumefantrine in the treatment of uncomplicated *Plasmodium falciparum* malaria in Zambian children. *Malar J*. 2011;10:50.
- Nosten F, White NJ. Artemisinin-based combination treatment of falciparum malaria. *Am J Trop Med Hyg*. 2007;77(6 Suppl):181–92.
- Wilby KJ, Ensom MH. Pharmacokinetics of antimalarials in pregnancy: a systematic review. *Clin Pharmacokinet*. 2011;50:705–23.
- Manyando C, Kayentao K, D'Alessandro U, Okafor HU, Juma E, Hamed K. A systematic review of the safety and efficacy of artemether-lumefantrine against uncomplicated *Plasmodium falciparum* malaria during pregnancy. *Malar J*. 2012;11:141.
- Kloprogge F, Piola P, Dhorda M, Muwanga S, Turyakira E, Apinan S, et al. Population pharmacokinetics of lumefantrine in pregnant and nonpregnant women with uncomplicated *Plasmodium falciparum* malaria in Uganda. *CPT Pharmacometrics Syst Pharmacol*. 2013;2:e83.
- Fievet N, Tami G, Maubert B, Moussa M, Shaw IK, Cot M, et al. Cellular immune response to *Plasmodium falciparum* after pregnancy is related to previous placental infection and parity. *Malar J*. 2002;1:16.
- Shekalaghe S, Alifrangis M, Mwanziva C, Enevold A, Mwakalinga S, Mkali H, et al. Low density parasitaemia, red blood cell polymorphisms and *Plasmodium falciparum* specific immune responses in a low endemic area in northern Tanzania. *BMC Infect Dis*. 2009;9:69.
- Ittarat W, Pickard AL, Rattanasingchan P, Wilairatana P, Looareesuwan S, Emery K, et al. Recrudescence in artesunate-treated patients with falciparum malaria is dependent on parasite burden not on parasite factors. *Am J Trop Med Hyg*. 2003;68:147–52.
- Khalil IF, Alifrangis M, Tarimo DS, Staalso T, Satti GM, Theander TG, et al. The roles of the pfcrt 76T and pfmdr1 86Y mutations, immunity and the initial level of parasitaemia, in predicting the outcome of chloroquine treatment in two areas with different transmission intensities. *Ann Trop Med Parasitol*. 2005;99:441–8.
- Laufer MK, Djimde AA, Plowe CV. Monitoring and deterring drug-resistant malaria in the era of combination therapy. *Am J Trop Med Hyg*. 2007;77(6 Suppl):160–9.
- Douglas NM, Anstey NM, Angus BJ, Nosten F, Price RN. Artemisinin combination therapy for vivax malaria. *Lancet Infect Dis*. 2010;10:405–16.
- Hoglund RM, Adam I, Hanpithakpong W, Ashton M, Lindegardh N, Day NP, et al. A population pharmacokinetic model of piperazine in pregnant and non-pregnant women with uncomplicated *Plasmodium falciparum* malaria in Sudan. *Malar J*. 2012;11:398.
- Dorsey G, Gasasira AF, Machekano R, Kanya MR, Staedke SG, Hubbard A. The impact of age, temperature, and parasite density on treatment outcomes from antimalarial clinical trials in Kampala, Uganda. *Am J Trop Med Hyg*. 2004;71:531–6.
- ter Kuile FO, Luxemburger C, Nosten F, Thwai KL, Chongsuphajaisiddhi T, White NJ. Predictors of mefloquine treatment failure: a prospective study of 1590 patients with uncomplicated falciparum malaria. *Trans R Soc Trop Med Hyg*. 1995;89:660–4.
- Angus BJ, Chotivanich K, Udomsangpetch R, White NJ. In vivo removal of malaria parasites from red blood cells without their destruction in acute falciparum malaria. *Blood*. 1997;90:2037–40.
- Gonzalez R, Mombo-Ngoma G, Ouedraogo S, Kakolwa MA, Abdulla S, Accrombessi M, et al. Intermittent preventive treatment of malaria in pregnancy with mefloquine in HIV-negative women: a multicentre randomized controlled trial. *PLoS Med*. 2014;11:e1001733.
- Manyando C, Mkandawire R, Puma L, Sinkala M, Mpabalwani E, Njunju E, et al. Safety of artemether-lumefantrine in pregnant women with malaria: results of a prospective cohort study in Zambia. *Malar J*. 2010;9:249.

41. McGready R, Tan SO, Ashley EA, Pimanpanarak M, Viladpai-Nguen J, Phaiphun L, et al. A randomised controlled trial of artemether-lumefantrine versus artesunate for uncomplicated plasmodium falciparum treatment in pregnancy. *PLoS Med*. 2008;5:e253.
42. Poespoprodjo JR, Fobia W, Kenangalem E, Hasanuddin A, Sugiarto P, Tjitra E, et al. Highly effective therapy for maternal malaria associated with a lower risk of vertical transmission. *J Infect Dis*. 2011;204:1613–9.
43. Nambozi M, Malunga P, Mulenga M, Van Geertruyden JP, D'Alessandro U. Defining the malaria burden in Nchelenge District, northern Zambia using the World Health Organization malaria indicators survey. *Malar J*. 2014;13:220.

Submit your next manuscript to BioMed Central  
and we will help you at every step:

- We accept pre-submission inquiries
- Our selector tool helps you to find the most relevant journal
- We provide round the clock customer support
- Convenient online submission
- Thorough peer review
- Inclusion in PubMed and all major indexing services
- Maximum visibility for your research

Submit your manuscript at  
[www.biomedcentral.com/submit](http://www.biomedcentral.com/submit)

