



The University of  
**Nottingham**

UNITED KINGDOM · CHINA · MALAYSIA

Sachdev, Divya and Gough, Kevin C. and Flynn, Robin J. (2017) The chronic stages of bovine *Fasciola hepatica* are dominated by CD4 T-Cell exhaustion. *Frontiers in Immunology*, 8 . 1002/1-1002/10. ISSN 1664-3224

**Access from the University of Nottingham repository:**

<http://eprints.nottingham.ac.uk/45334/1/Sachdev%20etal.pdf>

**Copyright and reuse:**

The Nottingham ePrints service makes this work by researchers of the University of Nottingham available open access under the following conditions.

This article is made available under the Creative Commons Attribution licence and may be reused according to the conditions of the licence. For more details see:  
<http://creativecommons.org/licenses/by/2.5/>

**A note on versions:**

The version presented here may differ from the published version or from the version of record. If you wish to cite this item you are advised to consult the publisher's version. Please see the repository url above for details on accessing the published version and note that access may require a subscription.

For more information, please contact [eprints@nottingham.ac.uk](mailto:eprints@nottingham.ac.uk)



# The Chronic Stages of Bovine *Fasciola hepatica* Are Dominated by CD4 T-Cell Exhaustion

Divya Sachdev<sup>1†</sup>, Kevin C. Gough<sup>1</sup> and Robin J. Flynn<sup>2\*</sup>

<sup>1</sup>School of Veterinary Medicine and Science, University of Nottingham, Loughborough, United Kingdom, <sup>2</sup>Department of Infection Biology, Institute of Infection and Global Health, University of Liverpool, Liverpool, United Kingdom

## OPEN ACCESS

### Edited by:

Fabrizio Ceciliani,  
Università degli Studi di Milano, Italy

### Reviewed by:

Michele Mortarino,  
Università degli Studi di Milano, Italy  
Simon Babayan,  
University of Glasgow,  
United Kingdom

### \*Correspondence:

Robin J. Flynn  
robin.flynn@liverpool.ac.uk

### <sup>1</sup>Present address:

Divya Sachdev,  
International Centre for Genetic  
Engineering and Biotechnology,  
Jawaharlal Nehru University,  
New Delhi, Delhi, India

### Specialty section:

This article was submitted to  
Comparative Immunology,  
a section of the journal  
Frontiers in Immunology

Received: 26 May 2017

Accepted: 04 August 2017

Published: 21 August 2017

### Citation:

Sachdev D, Gough KC and Flynn RJ  
(2017) The Chronic Stages of Bovine  
*Fasciola hepatica* Are Dominated by  
CD4 T-Cell Exhaustion.  
Front. Immunol. 8:1002.  
doi: 10.3389/fimmu.2017.01002

*Fasciola hepatica* infection of ruminants leads to non-resolving chronic infection, as patency develops, there is switching to a TGF- $\beta$  and IL-10 led response. Here, we explore the responses of CD4 T-cells within the major draining lymph nodes. We found minimal expression of Foxp3 within CD4 cells but elevated levels within the  $\gamma\delta$  (WC1<sup>+</sup>) population. There is a strong T-cell-intrinsic exhaustion phenotype within the hepatic lymph node (HLN) characterized by a lack of antigen-specific proliferation and cytokine secretion. CD4 T-cells recovered from the HLN had high levels of PD-1 expression and low levels of IL-2 secretion. Exogenous IL-2 partially rescued this defect; when combined with neutralization of IL-10 and TGF- $\beta$ , full restoration of proliferation, and cytokine production was achieved. Moreover, there is a clear uncoupling of the mechanisms that facilitate this regulation with parasite-specific proliferation and cytokine secretion being governed by independent means. These data would suggest that there is a CD4 T-cell-intrinsic regulation in place early in chronic infection, potentially leading to failure in resistance to reinfection.

**Keywords:** *Fasciola hepatica*, chronic helminth infection, T-cell responses, IL-10, IL-2, hyporesponsive, anergy, Foxp3

## INTRODUCTION

*Fasciola hepatica* is known to establish chronic infections in its bovine host despite the development of a strong type-2/CD4<sup>+</sup> Th2 response (1). As such, animals fail to develop resistance to reinfection as has been demonstrated experimentally (2). Reasons underlying this have been suggested to be similar to those seen in other models of helminth infection. *Schistosoma mansoni* infection shows a strong increase in the number of CD4 Foxp3<sup>+</sup> Treg cells in parallel with the Th2 response (3); however, a later study using live infection, as opposed to schistosome egg antigen challenge (3), suggested that the control of the response was not dependent on Foxp3<sup>+</sup> T-cells but on a population of CD4<sup>+</sup>CD25<sup>-</sup>CTLA4<sup>+</sup> IL-10-secreting cells (4). Further studies using *Trichinella spiralis* showed that regulation of the response against the muscle resident phase relied not only upon Foxp3<sup>+</sup> CD4 T-cells but also upon IL-10 from a distinct cellular source (5); echoing those findings of Helmby and Grecis (6) who had demonstrated that IL-10 was effective at restraining the cellular response directed at larvae but not intestinal adults. These findings would suggest that Foxp3 expression alone is not responsible for the regulatory response to tissue helminths.

Previous studies of *F. hepatica* in the murine model suggest that CD4 Foxp3<sup>+</sup> T-cells expand but these cells make up one of two major IL-10<sup>+</sup> T-cell populations, the second being most likely Tr1 (CTLA4<sup>+</sup>CD25<sup>+</sup>) cells. However, while this was the case in the peritoneal cavity, no expansion of Foxp3<sup>+</sup> cells were seen in the mesenteric lymph node (MLN) implicating the Tr1 population in IL-10 production and regulatory functions (4). More recently, a murine study has definitively classified the CD4 T-cell population as anergic; anergy could be induced by both live infection and injection of a tegumental antigen preparation (FHTEG). Aldridge and O'Neill reported that PD-1, CTLA4, and

GRAIL (RNF128) were all upregulated in the splenic CD4 population after antigen injection (7). The effect of FHTEG was found to be multimodal *via* both DCs and their expression of the mannose receptor or directly on the CD4 population itself; reflecting the heterogeneous nature of FHTEG. The loss of antigen-specific responses, both proliferation and cytokine production, could be restored by the addition of IL-2. In the bovine model of infection, we have previously shown at a peripheral level, that both TGF- $\beta$  and IL-10 played a role in limiting IL-4 and IFN- $\gamma$  production. The levels of IL-10 and TGF- $\beta$  increased as infection progressed while proliferation capacity continued to diminish in the face of an expanding lymphocyte number (8). There appears to be multiple mechanisms responsible for the suppression of CD4 T-cell parasite-specific responses that largely exclude Foxp3; should these all arise from a single cell population effectively targeting them *via* adjuvant to overcome their effects will be simpler than if multiple cell populations act in concert to suppress the CD4 response.

The mechanisms by which the adaptive immune system is restrained is of foremost importance for any future vaccine prospects; as pre-existing anergic antigenic-specific responses could compromise the potential of any vaccine under field conditions. In particular, this is important to address within the liver environment where ongoing immune responses need to be controlled carefully to balance any potential pathology with benefits as a result of parasite clearance. This raises several questions for the regulation of the *F. hepatica* CD4 T-cell response; herein, we examined the hepatic lymph node (HLN) CD4 T-cell pool for functional capacity during chronic patent infection with *F. hepatica*.

## MATERIALS AND METHODS

### Experimental Infection

Male Holstein  $\times$  Friesian cattle at 3 months of age were used, animals were tested for prior exposure to *F. hepatica* before experimental infections using both serological analysis and fecal egg counts (FECs). Animals were infected with 250 metacercariae from Ridgeway Scientific and maintained until 13 weeks of postinfection. Throughout the experiment, animals had *ad libitum* access to feed and water. After, the infection period animals were euthanized by stunning with a captive bolt and exsanguination. Blood was collected weekly and, at PM, lymph nodes were removed and collected into sterile PBS.

Parasite-specific LFH IgG1 was determined as previously described using LFH (10  $\mu$ g/mL) as a capture antigen (9), plates were probed with serially diluted serum samples. Thereafter, bound IgG1 was detected using mouse-anti-bovine IgG1:HRP (Abdserotec clone IL-A60) and TMB. Additionally, entire livers were removed and examined to determine the final parasite burden, parasites were determined to be mature or immature on the basis of body shape and the development of the “shoulder” area of the fluke as previously described (10, 11). FECs were performed on 1 g of feces using the standard sedimentation technique.

### Ethics Statement

Experiments were conducted under Home Office License PPL 30/3239 in accordance with Animal Scientific Procedures Act

1986 and ethical approval for the study was provided by the University of Nottingham SVMS and ADAS UK Animal Welfare and Ethics Review Committee. Animal involved in experiments had their suffering minimized and their welfare was as outlined in the guidance provided by EU Directive 2010/63/EU.

### Tissue Culture

Single cell suspensions were prepared from the lymph nodes by forcing through a 70  $\mu$ m cell strainer, thereafter, red blood cells were lysed with ammonium chloride lysis buffer. Cells were washed twice in 1 $\times$  PBS and resuspended at 10<sup>7</sup> cells/mL for cell separation. Miltenyi magnetic cell separation was used, as per the manufacturer's instructions, following a primary incubation with the mouse anti-bovine CD4 monoclonal antibody (AbDserotec—clone CC30; mouse IgG1) at 1/50 dilution followed by incubation with secondary Miltenyi magnetic beads coated with anti-mouse IgG as per manufacturer's instructions. Purified cells were cultured at a final density of 2  $\times$  10<sup>6</sup>/mL and stimulated with endotoxin-free total adult antigen extract (LFH) at 10  $\mu$ g/mL or anti-bovine CD3 (VMRD—clone MM1A) that had been coated onto tissue culture plates at 1  $\mu$ g/mL overnight. Where indicated, anti-IL-10 (AbDserotec—clone CC320) (12, 13) or anti-TGF (R&D Systems—polyclonal AB-100-NA) (14) were used at 1  $\mu$ g/mL, alternatively cells were cultured in the presence of recombinant bovine IL-2 (Kingfisher Biotech RP0026B at the indicated concentrations), all cultures were in RPMI-1640 with 10% heat-inactivated fetal calf serum (FCS), penicillin (100 U/mL), and streptomycin (100  $\mu$ g/mL).

For coculture, experiments requiring PBMCs cells were purified as before (8); PBMCs were subsequently stored in liquid nitrogen in 80% FCS/20% DMSO. After thawing, cells were washed immediately twice in complete RPMI prior to separation of CD4 T-cells as above. Cells were then cocultured together in the indicated ratios prior to analysis for either IFN- $\gamma$  or proliferation using the MTT assay (Sigma-Aldrich).

### FACs Analysis

Single cell suspensions were stained with combinations of antibodies indicated below for 25 min at 4°C protected from the dark. Cells were acquired on a BD FACS Aria (BD Biosciences, San Jose, CA, USA) and gated on forward and side scatter to exclude damaged cells and debris. Cells were stained with combinations of the following; anti-bovine CD4 (Alexa Fluor<sup>®</sup> 647 clone CC8, mouse IgG2a, AbDserotec), anti-bovine CD25 (RPE clone ILA111, mouse IgG AbDserotec), anti-bovine WC1 (FITC clone CC15, AbDserotec), anti-bovine Foxp3 (APC FJK-16s, rat IgG2a, eBioscience), anti-bovine CD62L (FITC clone CC32 AbDserotec), and anti-bovine CD45RO (RPE clone IL-A116, AbDserotec). Appropriate isotype and unstained controls were captured. Data were analyzed using FlowJo version 7.6.1 analysis software (TreeStar, San Carlos, CA, USA).

### Cytokine Measurements

Supernatants were tested for the presence of cytokines using commercial ELISAs as follows; TGF- $\beta$  (Promega-G7591), IL-4 (ThermoFisher-ESS0031), IFN- $\gamma$  (MABtech-3119-1H-6), IL-5 (LSBio LS-F6133), IL-13 (Kingfisher Biotech VS0148B), and IL-2

(Kingfisher Biotech DIY1100B). For the detection of IL-10, IL-10 capture antibody (AbDserotec, clone CC318) was used at 6  $\mu\text{g}/\text{mL}$  and detection IL-10 antibody (AbDserotec, biotin-conjugated clone CC320) was used at 2  $\mu\text{g}/\text{mL}$  as previously described (15), with the inclusion of recombinant IL-10 as a standard curve. All assays were carried out as per manufacturer's instructions with optical densities captured on a LT-4000 microplate reader (Labtech, UK) with standard curves used for quantification throughout.

## qPCR

To measure PD-L1 and CTLA4 *via* qPCR, RNA was isolated from freshly prepared cells and converted to cDNA using the GoScript Reverse Transcription Kit (Promega). Primers for *pdc1* and *ctla4* (Applied Biosystems #4351372 and #4351372) and conditions used are as previously reported (16). Assays were run in quadruplicate on a Roche Lightcycler II, data were analyzed using the  $\Delta\Delta\text{CT}$  method to determine fold expression changes relative to *rpl19* (Applied Biosystems #4331182), which has previously been shown to be a suitable housekeeping gene for immunological analysis (17).

## Statistical Analysis

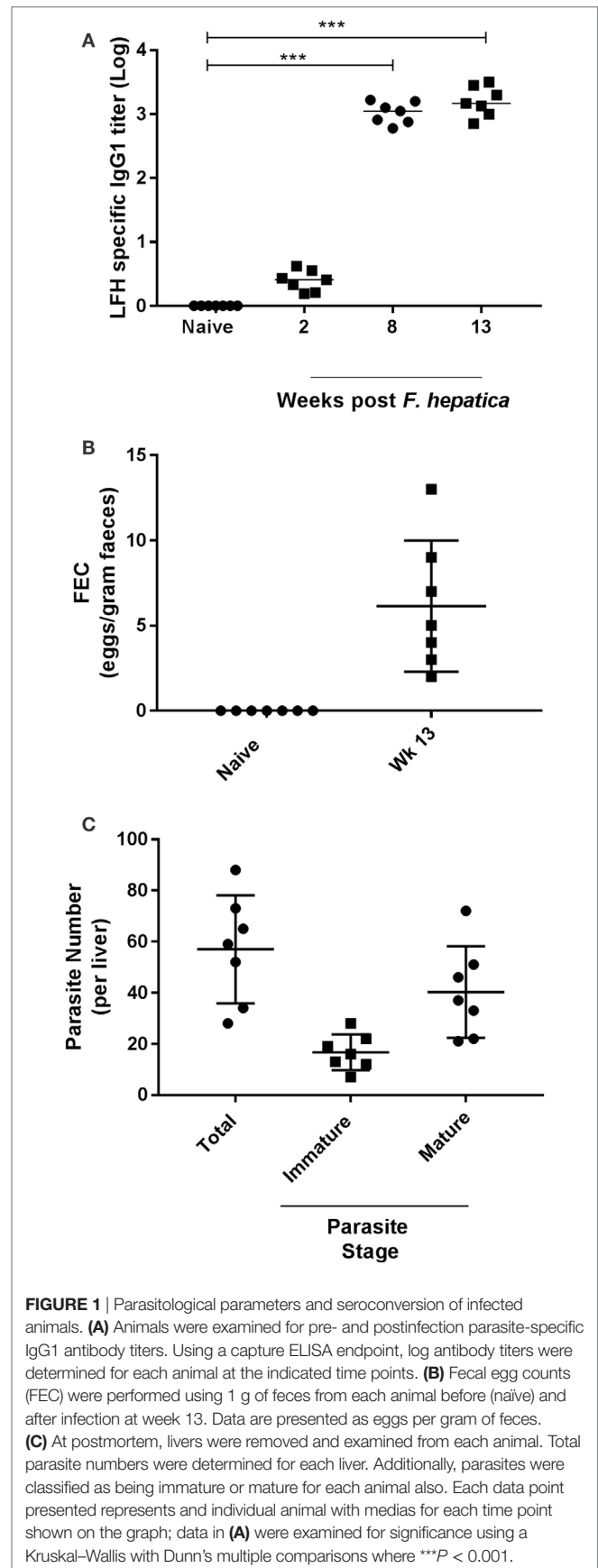
Data were plotted within GraphPad Prism (La Jolla, CA, USA), a *P*-value cutoff of 0.05 was taken as significant, and details of specific tests used are given in the relevant figure legends.

## RESULTS

### Cytokine Responses of CD4 T-Cells at Draining Lymph Nodes of *F. hepatica* Infected Animals

Preinfection examination of the animals revealed neither specific anti-*Fasciola* IgG1 antibodies (Figure 1A) nor parasite eggs present within feces (Figure 1B). However, as infection progressed, the development of parasite-specific IgG1 became clear at week 2 postinfection with titers reaching a plateau by week 8 and remaining at these levels until completion of the trial (Figure 1A). Similarly, when animals were examined for the presence of parasite eggs in the feces, we found all animals to be egg positive, with a range of 2–13 eggs/g and a median count of 5 (Figure 1B). At postmortem, all livers were examined for the presence of infiltrating parasites in the bile ducts, gall bladder, and throughout the tissues; total parasite numbers and both immature and mature forms were counted (Figure 1C). All animals harbored parasites in their liver at examination; the range of total parasites recovered was 28–88, while all animals had greater numbers of mature parasites (range: 21–72) compared to immature parasites (range: 7–28; Figure 1C).

Previous studies of the bovine cytokine response have either focused on the systemic response or used a transcriptomics approach to whole tissues. Using a well-established model of experimental infection, we collected the MLN and HLN from infected animals after the development of patency. CD4 T-cells were isolated by magnetic bead selection and cultured for 72 h in the presence of anti-CD3 or LFH; thereafter, supernatants



**FIGURE 1** | Parasitological parameters and seroconversion of infected animals. **(A)** Animals were examined for pre- and postinfection parasite-specific IgG1 antibody titers. Using a capture ELISA endpoint, log antibody titers were determined for each animal at the indicated time points. **(B)** Fecal egg counts (FEC) were performed using 1 g of feces from each animal before (naive) and after infection at week 13. Data are presented as eggs per gram of feces. **(C)** At postmortem, livers were removed and examined from each animal. Total parasite numbers were determined for each liver. Additionally, parasites were classified as being immature or mature for each animal also. Each data point presented represents an individual animal with medians for each time point shown on the graph; data in **(A)** were examined for significance using a Kruskal–Wallis with Dunn's multiple comparisons where  $***P < 0.001$ .

were collected for cytokine ELISA. In both the infected MLN (**Figure 2A**, right panel) and HLN (**Figure 2B**, right panel), there was no significant IFN- $\gamma$  response either to CD3 or LFH; only CD3 stimulation of the MLN CD4 T-cells produced some detectable cytokine. This is in contrast to the findings in naïve tissues, where T-cells from both the MLN and HLN produced significant IFN- $\gamma$  after anti-CD3, but not LFH stimulation (**Figures 2A,B**, left panels).

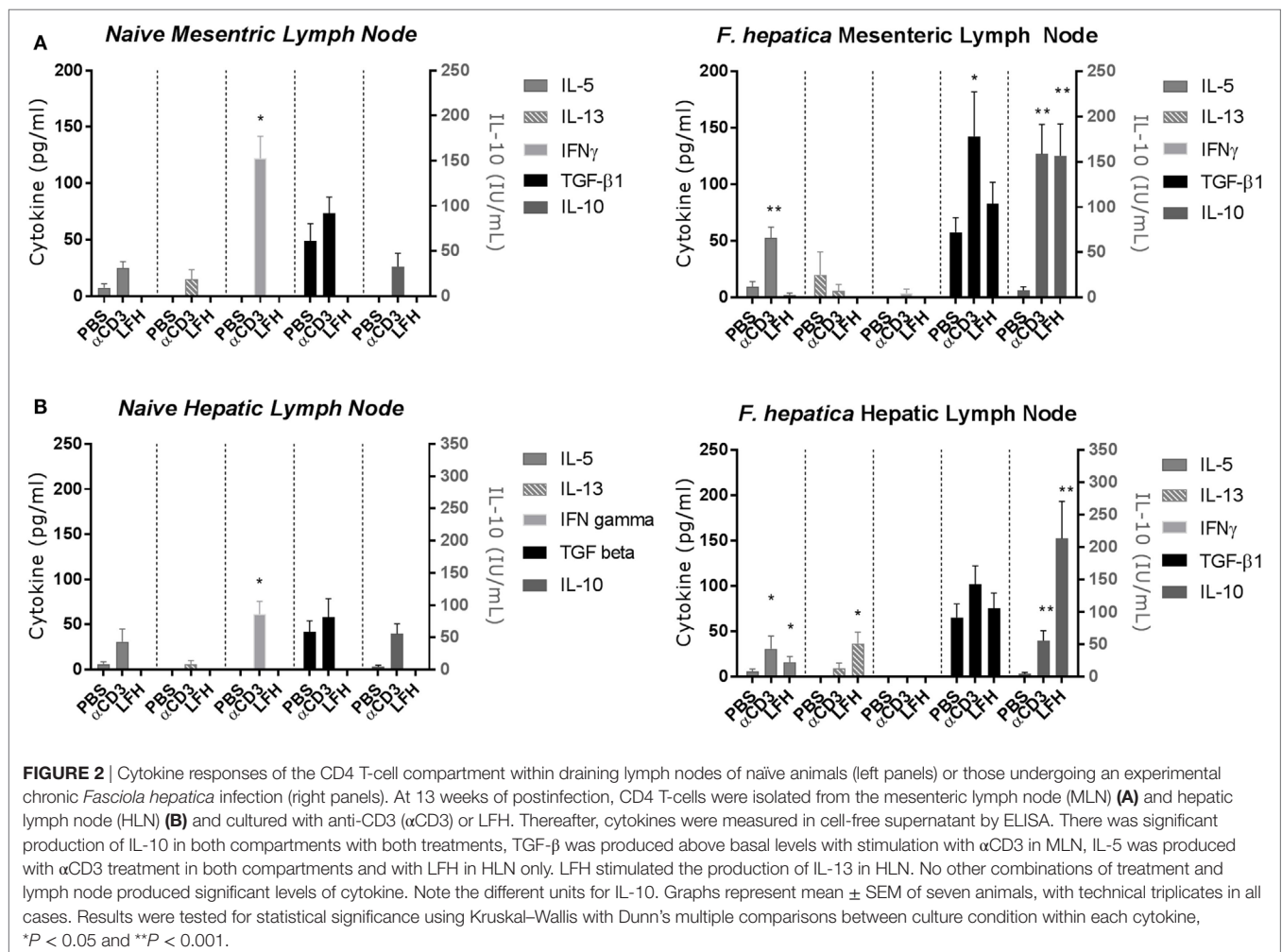
Of the type-2 cytokines examined, IL-5 was the most abundant at this point with CD3 stimulation but not LFH in the MLN and both CD3 and LFH stimulation within the HLN. In contrast, the naïve tissues produced IL-5 in response to anti-CD3 but not LFH; while IL-13 was non-detectable in naïve HLN T-cells low but variable levels were present in naïve MLN T-cells (**Figures 2A,B**, left panels). IL-13 was not significantly elevated except in response to LFH stimulation in the HLN. Indeed, only IL-10 and TGF- $\beta$  were readily detectable in both the MLN and HLN. IL-10 was significantly upregulated within both the MLN and HLN in response to both CD3 and LFH, and for these responses in the HLN parasite specific IL-10 was more readily produced in comparison to CD3. TGF- $\beta$  was spontaneously produced in PBS cultures in levels comparable to those produced by LFH. CD3-induced TGF- $\beta$  was

significantly raised, in comparison to both PBS and LFH, within the MLN but not the HLN (**Figure 2B**). IL-4 was not detectable in response to either CD3 or LFH at either site (data not shown). Overall, this would suggest that, even in the presence of a current infection, the draining HLN presents a strong immunoregulatory pattern with minimal type-2 cytokines.

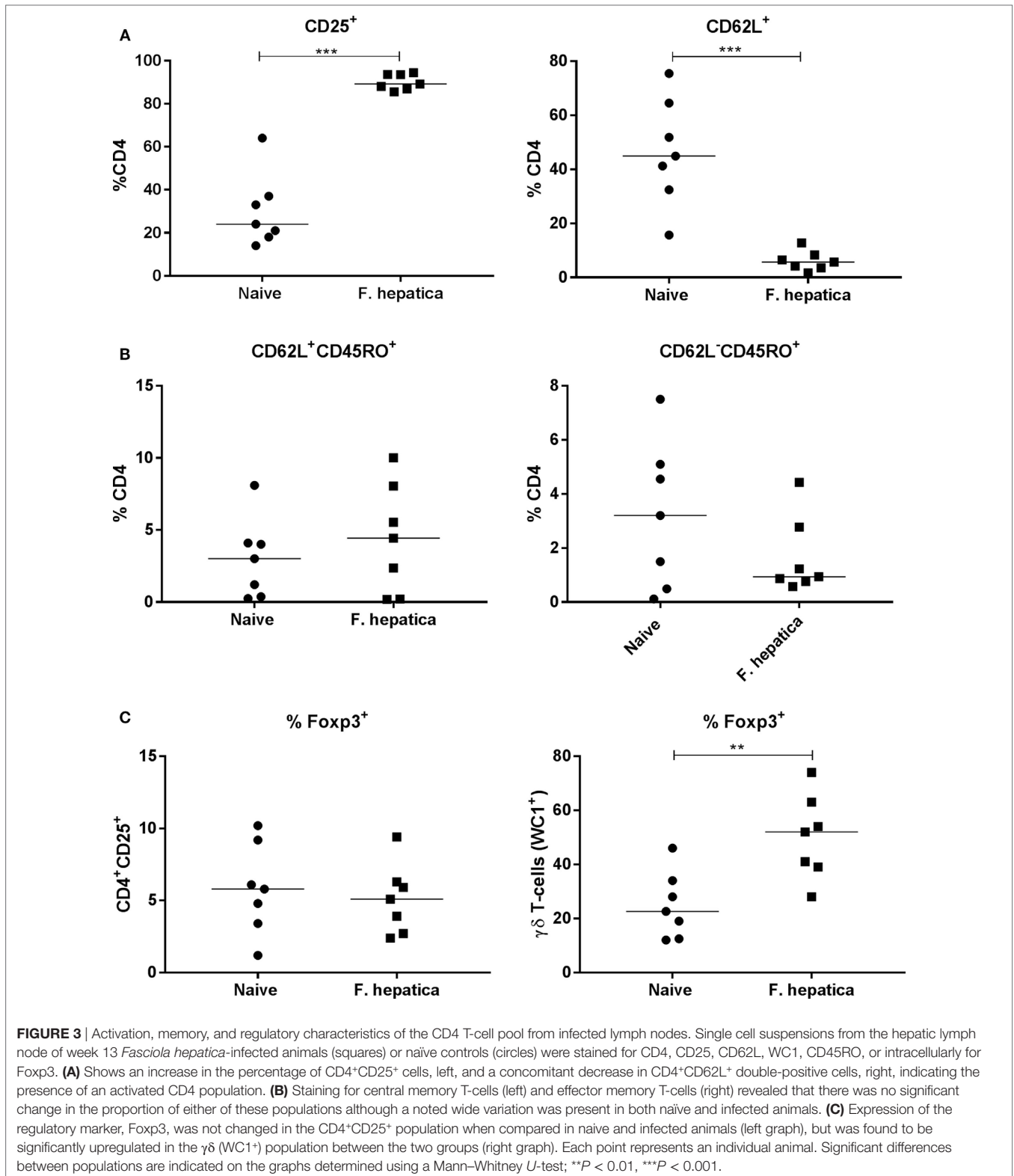
## CD4 T-Cells from Infected Animals Are Activated but Do Not Express Foxp3

We next examined CD4 T-cells from the HLN of infected animals, overall, there was a significant increase in the total number of cells from infected animals ( $95.2 \pm 26.5 \times 10^6$  cells;  $P < 0.05$ ) compared with naïve controls ( $52.9 \pm 20.4 \times 10^6$  cells). The percentage of CD4 cells expressing CD25, as a marker of activation, was 90 vs 30% within the controls (**Figure 3A**, left panel), in parallel, we saw a decrease in the percentage of naïve CD62L<sup>+</sup> CD4 T-cells, an average of 44% in controls vs 6% from infected animals (**Figure 3A**, right panel).

To determine if the CD4 pool in the lymph node of infected animals was committed to a memory phenotype, we examined the CD4<sup>+</sup>CD62L<sup>+</sup> subpopulation for CD45RO expression. There was no difference in CD45RO expression between infected and







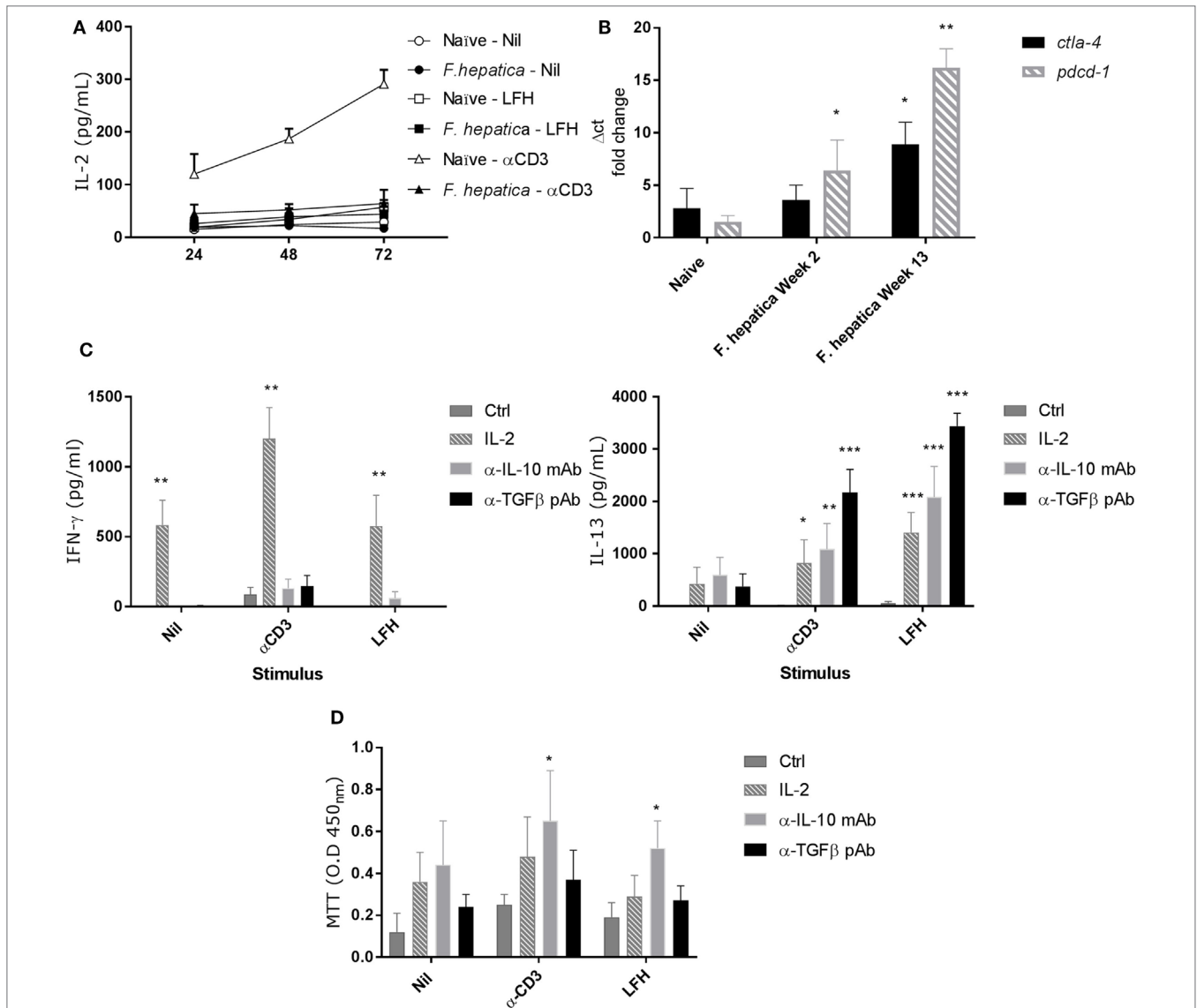
naïve animals (**Figure 3B**, left panel),  $5.4 \pm 1.8$  and  $4 \pm 1\%$  of the CD4<sup>+</sup>CD62L<sup>+</sup> cells, respectively, suggesting no change in the commitment of T-cells to the central memory phenotype. Similarly, gating on the CD62L<sup>-</sup> pool demonstrated that  $3.2 \pm 1\%$

of naïve CD4 T-cells were also CD45RO<sup>+</sup> while the corresponding population in infected animals was  $1.7 \pm 0.5\%$ ; demonstrating the lack of a memory cell expansion (**Figure 3B**, right panel). We stained the CD4<sup>+</sup>CD25<sup>+</sup> T-cell population for Foxp3, we found

only  $5.8 \pm 1.2\%$  of infected animals, and  $5.1 \pm 0.9\%$  of naïve animals, harbored traditional Foxp3 Tregs (Figure 3C, left panel). Indeed, we found that almost 50% ( $\pm 6\%$ ) of  $\gamma\delta$  (WC1<sup>+</sup>) T-cells were Foxp3<sup>+</sup> in infected animals compared with approximately half that proportion in naïve animals (Figure 3C, right panel). Thus, it would appear that the lack of proliferation and cytokine production in infected CD4 T-cells is not due to the presence of Foxp3<sup>+</sup> CD4 T-cells.

## HLN CD4 T-Cells Appear Anergic

IL-2 is a limiting factor in the responsiveness of lymphocytes, to determine if IL-2 played a role in the observed pattern of responses, we repeated the above CD4<sup>+</sup> T-cell isolation and culture in the presence of LFH or  $\alpha$ -CD3 stimulation. Cultures were sampled over a 72 h period, and Figure 4A shows that neither CD3 nor LFH drive IL-2 secretion but that naïve animals respond to CD3 stimulation with a steady accumulation of IL-2. Next, we



**FIGURE 4** | Failure to produce IL-2 and markers of anergy are coincident with non-responsive CD4 T-cells. **(A)** CD4 T-cells were isolated from the hepatic lymph node (HLN) of naïve or infected animals and cultured with  $\alpha$ -CD3, LFH, or PBS (nil) for 72 h. Supernatants were recovered at every 24 h and tested for IL-2. There is a clear failure of CD4 T-cells from the HLNs of infected animals to secrete IL-2. However, naïve CD4 T-cells readily secrete IL-2 over time with a near linear accumulation of cytokine. **(B)** mRNA from CD4 T-cells was isolated, cDNA prepared, and qPCR carried out. There is a clear increase in *pdcd1* expression from week 2 onward when compared to naïve animals. *Ctla4* expression is significantly upregulated at week 13 but not week 2. **(C)** The effect of exogenous IL-2, or neutralizing IL-10 or TGF- $\beta$  antibody on the expression of IFN- $\gamma$  (left) and IL-13 (right) in infected CD4 T-cells from HLN was examined. There was a clear impact of IL-2 on IFN- $\gamma$ , and IL-13 production was restored in the presence of all three treatments but to varying degrees. Ctrl represents cells treated with isotype Ab only at equal concentrations to neutralizing Ab. **(D)** CD4 T-cell proliferative responses in the HLN were assessed using the MTT dye assay after stimulation in the presence of treatments as in **(C)**. LFH and  $\alpha$ -CD3 responsiveness was restored in the presence of  $\alpha$ -IL-10 when compared within stimulation to non-treated controls. Bars represent the mean of seven animals  $\pm$  SEM. Significant differences were determined using Friedman test with a *post hoc* comparison using a Wilcoxon ranked-sign test **(A,C,D)** and Kruskal–Wallis with Dunn’s multiple comparisons **(B)** where \* $P < 0.05$ , \*\* $P < 0.01$ , \*\*\* $P < 0.0001$ .

conducted qPCR to determine if markers of anergy, *ctla4*, and *pdc1* were upregulated. Both *ctla4* and *pdc1* are upregulated in CD4 T-cells derived from animals 13 weeks of postinfection compared to those sampled at 2 weeks of postinfection or naïve controls (Figure 4B).

To test if the anergy could be reversed we repeated the above in the presence of IL-2,  $\alpha$ -IL-10 (clone CC320), or  $\alpha$ -TGF- $\beta$  (AB-100-NA). While IFN- $\gamma$  secretion was restored in response to LFH and CD3 with exogenous IL-2, neither  $\alpha$ -IL-10 nor  $\alpha$ -TGF- $\beta$  had a significant effect on IFN- $\gamma$  (Figure 4C). Conversely, IL-13 production was restored, compared to controls, in the presence of all three treatments during LFH and CD3 stimulation. Here, a graded effect was evident with an increasing capacity of IL-2,  $\alpha$ -IL-10, and  $\alpha$ -TGF- $\beta$  treatments in restoring IL-13 production (Figure 4C). To determine if the mechanisms controlling cytokine production and proliferation were linked, we examined antigen-specific proliferation, by MTT assay, in the presence of the IL-2,  $\alpha$ -IL-10, and  $\alpha$ -TGF- $\beta$  (Figure 4D). There was a high degree of variation in the responses of animals to these treatments.  $\alpha$ -IL-10 treatment succeeded in significantly restoring the capacity of cells to respond to CD3 stimulation; while IL-2 or  $\alpha$ -TGF- $\beta$  had some effect this was not significant. Similarly, when stimulated with LFH, there was a small, but significant increase, in proliferation with  $\alpha$ -IL-10 while neither IL-2 nor  $\alpha$ -TGF- $\beta$  had any effect on proliferation.

## Anergic T-Cells Suppress Autologous Antigen-Specific Responses

The presence of these anergic T-cells may impact upon host responses to reinfection, or upon future vaccination. To test if the anergic T-cells could impact on normally responsive T-cells, we isolated CD4 T-cells from circulation at week 2 postinfection, when *F. hepatica*-infected animals are normally responsive, and cocultured these with anergic cells in the presence of LFH. While week 2 CD4 T-cells could respond normally, in the presence of week 13 cells, this response was abrogated (Figure 5A).

Addition of  $\alpha$ -IL-10 resulted in an enhanced response in week 2 cells in response to LFH, suggesting that there was inhibition of low-level paracrine IL-10, and an increase in the week 13 only cells LFH-specific response (Figure 5B), consistent with our findings above. When  $\alpha$ -IL-10 was added to the coculture, there was a reversal of the inhibitory effect of week 13 CD4 T-cells, and the IL-10 they produce, on week 2 CD T-cells. Neutralization of IL-10 in the cocultures of these cells resulted in a threefold increase in proliferation. Figure 5B demonstrating that pre-existing anergic T-cell can be a major contributor of IL-10, altering the response of freshly responding non-anergic T-cells. This same trend is visible in terms of IL-2 production and utilization. Addition of exogenous IL-2 in the same system had effects on week 2 only CD4 cells while no effect was apparent on week 13 CD4 T-cells. Figure 5B in our coculture system, the effect of IL-2 addition was weaker compared with IL-10 neutralization as a small but not significant effect was seen on LFH-specific proliferation (Figure 5C); suggesting that proliferative hyporesponsiveness in this setting is mediated by IL-10. To test if the dissociation seen in the actions of IL-2 and IL-10 extended to cytokine production, we examined the secretion of IFN- $\gamma$ . Figure 5C clearly shows that IL-2 has a more profound effect on IFN- $\gamma$  secretion in cocultured

week 2 and week 13 cells when compared with  $\alpha$ -IL-10 treatment; demonstrating that the cell-intrinsic effects we found in chronically infected animals can be influential on normally responsive week 2 cells.

## DISCUSSION

We confirm a consistent pattern in chronic *fascioliasis* whereby Th2 cytokine responses are diminished by week 13 postinfection despite parasites residing in the liver. Broadly, this aligns with systemic PBMC responses at comparable stages of disease but diverges as there is an uncoupling of the regulatory mechanisms controlling Th2 and Th1 cytokines and cellular proliferation as they have been previously described (8, 18). Indeed, it would suggest that there are Th1 and Th2 intrinsic mechanisms controlling cytokine production on a per cell basis; supported by our finding that the CD4 compartment does not demonstrate expansion of a Foxp3 population. This aligns with findings from other models of *F. hepatica* and other veterinary parasite models. Escamilla et al. (19) have shown in goats and sheep that there is no expansion of CD4<sup>+</sup>Foxp3<sup>+</sup> cells by 9 days of infection but, by 15–19 weeks of postinfection, an infiltrate of these cells surrounds the enlarged bile ducts of livers in sheep and goats. Interestingly, when the HLN from the same study was examined, there was little evidence of expansion of the CD4 Foxp3 population with no significant changes in sheep with only goats showing a ~6% increase over baseline during the acute infection stages localized to the cortex. The tendency for sheep and goats to harbor expanded CD4<sup>+</sup>Foxp3<sup>+</sup> cells agrees with previous studies demonstrating that *Psoroptes ovis* causes an average of a 7% increase in recruitment of CD4<sup>+</sup>Foxp3<sup>+</sup> cells to the skin (20). *Teladorsagia circumscintia* studies have demonstrated an expansion in the overall Foxp3 population in the intestine of sheep, but not specifically within the CD4 population (21). Prior studies demonstrated that the  $\gamma\delta$  (WC1) T-cell population maybe the major bovine regulatory population (22, 23). Recently, it has been shown that these cells can suppress both antigen-specific and non-specific responses within the context of foot-mouth-disease vaccination [23]. The effects of WC1<sup>+</sup> $\gamma\delta$  T-cells was shown to be dependent on IL-10 and TGF- $\beta$  during these studies but independent of Foxp3; however, we did not characterize the effects of the WC1<sup>+</sup> FoxP3<sup>+</sup> population in this study. A definitive study of the function of Foxp3, in either CD4 or  $\gamma\delta$  T-cells, to demonstrate their specific actions within veterinary infectious disease remains to be completed. Tools are emerging that will allow an *in vivo* approach to the manipulation of CD4<sup>+</sup>Foxp3<sup>+</sup> in some veterinary species already (24).

Previous studies of murine *F. hepatica* infection have shown similar effects to those demonstrated here. Aldridge and O'Neill (7) demonstrated a strong increase in markers of anergy, CTLA-4, and PD-1, within splenic CD4 T-cells; while little to no change was noted in the expression of FoxP3. Walsh et al. (25) studied the MLN and showed that there was no apparent role for Foxp3<sup>+</sup> cells in the control of *F. hepatica*-specific responses. Our findings are more in keeping with these two latter studies than those using sheep or goats. We have demonstrated that an activated but anergic CD4 T-cell population controls the expression of IFN- $\gamma$  and IL-13 by the production of IL-10, TGF- $\beta$ , and to a lesser extent



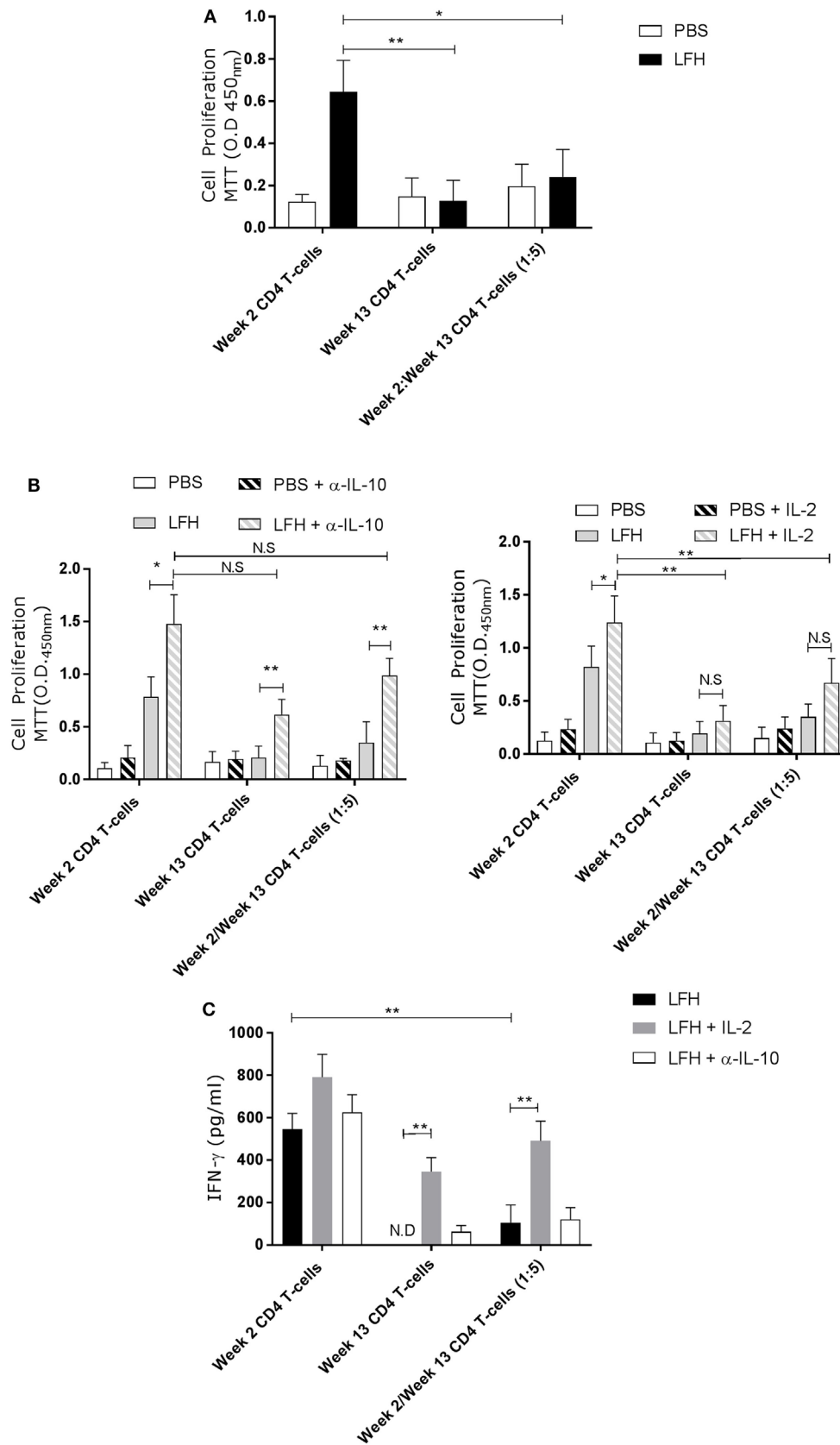


FIGURE 5 | Continued

**FIGURE 5** | Continued

Anergic CD4 T-cells are suppressive toward autologous responsive counterparts. CD4 T-cells taken from animals' 2 weeks of postinfection were cocultured with autologous CD4 T-cells isolated from the hepatic lymph node at postmortem. **(A)** Proliferation in response to LFH is still detectable in week 2 CD4 T-cells, as per previous findings; however, when anergic week 13 CD4 cells are added at a ratio of five cells per 1 week 2 responder cells, we see a strong suppression of proliferation. **(B)** A similar coculture was established and the effects of  $\alpha$ -IL-10 (left graph) and exogenous IL-2 (right graph) was determined. In the presence of  $\alpha$ -IL-10, there was significant reversal of the negative effects of anergic CD4 cells on their responsive counterparts; however, there was no positive effect of exogenous IL-2. **(C)** IFN- $\gamma$  levels in LFH-stimulated cells untreated (isotype control) or treated with IL-2 and  $\alpha$ -IL-10 were determined in the coculture system. In the presence of week 13 anergic CD4 cells, the IFN- $\gamma$  response, from responsive week 2 cells, was suppressed while IL-2, but not  $\alpha$ -IL-10 treatment, could abrogate the effect of week 13 CD4 T-cells on the responsive population. Bars represent the mean of seven animals'  $\pm$ SEM. Data in **(A)** and **(B,C)** were tested by Kruskal–Wallis with Dunn's multiple comparisons and Friedman test with a *post hoc* comparison using a Wilcoxon ranked-sign test, respectively. ND, not detected; NS, not significant, \* $P < 0.05$  and \*\* $P < 0.01$ .

through the control of IL-2 activity; these same mechanisms of suppression were active in terms of cellular proliferation at the site of final parasite residence where there is a constant source of antigen. One of the key triggers for induction of anergy is a source of antigen in the absence of costimulation or the presence of ligands such as CTLA-4 (26).

Establishment of this phenotype within the HLN is problematic and may explain the failure of animals to develop resistance to reinfection. We demonstrated that anergic HLN T-cells can suppress autologous T-cells recovered from animals during the responsive period. In coculture, the addition of week 13 T-cells clearly and negatively impacted both proliferation and IFN- $\gamma$  release. Anergic T-cells, which persist and overlap with a new incoming wave of parasites have the potential to skew the response of responsive T-cells *via* IL-10 production and altered IL-2 utilization. The uncoupling of the cytokine and proliferation control mechanisms is a novel finding given our previous findings (8); however, given that our study here is focused on lymphoid tissue sites and not circulating PBMCs, this is not unsurprising as secreting anti-inflammatory mediators is more likely effective in a systemic setting compared with controlling cytokine production/utilization at a single cell level. Recent studies have identified a PD-L1-expressing CD4 T-cell population as also being capable of suppressing IFN- $\gamma$  in viral infection and blocking PD-L1 *in vivo* resulted in reductions in viral load (27). However, this was at a systemic level and our study here identifies a lymph node residing CD4 pool that differs to previous systemic circulating pools in terms of regulating mechanisms. Additionally, the uncoupling of the cytokine and proliferating control mechanisms would suggest that lymphoid tissue sites may influence the types of regulatory cells (or their mechanism) that arise differently to those that circulate or form in circulation.

Studies of murine schistosomiasis demonstrated that resistance to reinfection after a drug-abbreviated infection was improved in the context of anti-IL-10 treatment (28). Blockade of IL-10 resulted in a global increase in the antigen-specific Th1/Th2/Th17 responses, an attractive proposition given the prevailing thoughts that ruminants are protected from *F. hepatica* only through a combined Th1/Th2 response (29). While in human schistosomiasis, there was significant effect of increases in posttreatment Th2/Th17 cytokine responses and protection against reinfection (30). Whether these effects can be extended to fascioliasis remains to be examined. Moreover, to fully appreciate the role of anergy in the response to fascioliasis, we must consider all findings in a breed-specific context and the influence of MHC haplotype will guide the development of anergy given its reliance on antigen

exposure and the variation within MHC complexes that has long been recognized in different cattle breeds (31). However, our data here were obtained from Holstein–Friesian cattle, which are the most common breed within the UK in terms of dairy production (32) and so are highly representative of the dairy population.

In conclusion, we have shown the presence of an antigen-specific CD4 T-cell population, which appears to be hyporesponsive from the initial stages of chronic infection. These cells upregulate CTLA-4 and PD-1, but not Foxp3, and are both suppressive in a cell-intrinsic manner and in the context of autologous-responsive cells. This is mediated by IL-10 secretion and control of IL-2 production both of which can be reversed *ex vivo* to restore both cytokine production and proliferation. Importantly, these mechanisms are uncoupled in that IL-2 and IL-10 have distinct actions, which appear not to overlap. It remains to be demonstrated how long these cells persist during infection and posttreatment in the context of Fascioliasis, and whether they have a functional role in mediating the lack of resistance to reinfection despite repeated drug-abbreviated infections.

## ETHICS STATEMENT

Experiments were conducted under Home Office License PPL 30/3239 in accordance with Animal Scientific Procedures Act 1986 and ethical approval for the study was provided by the University of Nottingham SVMS and ADAS UK Animal Welfare and Ethics Review Committee. Animals involved in experiments had their suffering minimized and their welfare was maintained as outlined in the guidance provided by EU Directive 2010/63/EU.

## AUTHOR CONTRIBUTIONS

DS and RF performed experiments; RF and KG oversaw study design; DS, KG, and RF contributed to data analysis; DS, RF, and KG prepared final draft.

## ACKNOWLEDGMENTS

The authors would like to thank Parul Sharma and Katarzyna Zolnierczyk for assistance with the preparation of PBMC samples and Natalie Calthorpe for help with the cytokine ELISAs. We would also like to thank Diana Williams and John Graham-Brown for helpful discussions. This work was supported by the Biotechnology and Biological Sciences Research Council (BBSRC) award BB/M018520/1 and by an Innovate UK award BB/M018369/to RF and KG.

## REFERENCES

- Flynn RJ, Mulcahy G, Elsheikha HM. Coordinating innate and adaptive immunity in *Fasciola hepatica* infection: implications for control. *Vet Parasitol* (2010) 169:235–40. doi:10.1016/j.vetpar.2010.02.015
- Clery D, Torgerson P, Mulcahy G. Immune responses of chronically infected adult cattle to *Fasciola hepatica*. *Vet Parasitol* (1996) 62:71–82. doi:10.1016/0304-4017(95)00858-6
- Taylor JJ, Mohrs M, Pearce EJ. Regulatory T cell responses develop in parallel to Th responses and control the magnitude and phenotype of the Th effector population. *J Immunol* (2006) 176:5839–47. doi:10.4049/jimmunol.176.10.5839
- Walsh CM, Smith P, Fallon PG. Role for CTLA-4 but not CD25+ T cells during *Schistosoma mansoni* infection of mice. *Parasite Immunol* (2007) 29:293–308. doi:10.1111/j.1365-3024.2007.00947.x
- Beiting DP, Gagliardo LF, Hesse M, Bliss SK, Meskill D, Appleton JA. Coordinated control of immunity to muscle stage *Trichinella spiralis* by IL-10, regulatory T cells, and TGF-beta. *J Immunol* (2007) 178:1039–47. doi:10.4049/jimmunol.178.2.1039
- Helmbly H, Grecis RK. Contrasting roles for IL-10 in protective immunity to different life cycle stages of intestinal nematode parasites. *Eur J Immunol* (2003) 33:2382–90. doi:10.1002/eji.200324082
- Aldridge A, O'Neill SM. *Fasciola hepatica* tegumental antigens induce anergic-like T cells via dendritic cells in a mannose receptor-dependent manner. *Eur J Immunol* (2016) 46:1180–92. doi:10.1002/eji.201545905
- Flynn RJ, Mulcahy G. The roles of IL-10 and TGF-beta in controlling IL-4 and IFN-gamma production during experimental *Fasciola hepatica* infection. *Int J Parasitol* (2008) 38:1673–80. doi:10.1016/j.ijpara.2008.05.008
- Flynn RJ, Mulcahy G, Welsh M, Cassidy JP, Corbett D, Milligan C, et al. Co-infection of cattle with *Fasciola hepatica* and *Mycobacterium bovis* – immunological consequences. *Transbound Emerg Dis* (2009) 56:269–74. doi:10.1111/j.1865-1682.2009.01075.x
- Ministry of Agriculture, Fisheries and Food. 3rd ed. In: H.M. Stationery Office, editor. *Manual of Veterinary Parasitological Laboratory Techniques*. London: Ministry of Agriculture, Fisheries and Food (1986). 48 p.
- Golden O, Flynn RJ, Read C, Sekiya M, Donnelly SM, Stack C, et al. Protection of cattle against a natural infection of *Fasciola hepatica* by vaccination with recombinant cathepsin L1 (rFhCL1). *Vaccine* (2010) 28:5551–7. doi:10.1016/j.vaccine.2010.06.039
- Kwong LS, Hope JC, Thom ML, Sopp P, Duggan S, Bembridge GP, et al. Development of an ELISA for bovine IL-10. *Vet Immunol Immunopathol* (2002) 85:213–23. doi:10.1016/S0165-2427(02)00007-7
- Buza JJ, Hikono H, Mori Y, Nagata R, Hirayama S, Aodon G, et al. Neutralization of interleukin-10 significantly enhances gamma interferon expression in peripheral blood by stimulation with Johnin purified protein derivative and by infection with *Mycobacterium avium* subsp. paratuberculosis in experimentally infected cattle with paratuberculosis. *Infect Immun* (2004) 72:2425–8. doi:10.1128/IAI.72.4.2425-2428.2004
- Abbott JR, Palmer GH, Kegerreis KA, Hetrick PF, Howard CJ, Hope JC, et al. Rapid and long-term disappearance of CD4+ T lymphocyte responses specific for *Anaplasma marginale* major surface protein-2 (MSP2) in MSP2 vaccinates following challenge with live *A. marginale*. *J Immunol* (2005) 174:6702–15. doi:10.4049/jimmunol.174.11.6702
- Flynn RJ, Mulcahy G. Possible role for toll-like receptors in interaction of *Fasciola hepatica* excretory/secretory products with bovine macrophages. *Infect Immun* (2008) 76:678–84. doi:10.1128/IAI.00732-07
- Ikebuchi R, Konnai S, Shirai T, Sunden Y, Murata S, Onuma M, et al. Increase of cells expressing PD-L1 in bovine leukemia virus infection and enhancement of anti-viral immune responses in vitro via PD-L1 blockade. *Vet Res* (2011) 42:103. doi:10.1186/1297-9716-42-103
- Fu Y, Chryssafidis AL, Browne JA, O'Sullivan J, Mcgettigan PA, Mulcahy G. Transcriptomic study on ovine immune responses to *Fasciola hepatica* infection. *PLoS Negl Trop Dis* (2016) 10:e0005015. doi:10.1371/journal.pntd.0005015
- Clery DG, Mulcahy G. Lymphocyte and cytokine responses of young cattle during primary infection with *Fasciola hepatica*. *Res Vet Sci* (1998) 65:169–71. doi:10.1016/S0034-5288(98)90171-0
- Escamilla A, Zafra R, Perez J, Mcneilly TN, Pacheco IL, Buffoni L, et al. Distribution of Foxp3+ T cells in the liver and hepatic lymph nodes of goats and sheep experimentally infected with *Fasciola hepatica*. *Vet Parasitol* (2016) 230:14–9. doi:10.1016/j.vetpar.2016.10.020
- McNeilly TN, McIntyre J, Frew D, Griffiths DJ, Wattedegera SR, Van Den Broek A, et al. Infestation of sheep with *Psoroptes ovis*, the sheep scab mite, results in recruitment of Foxp3(+) T cells into the dermis. *Parasite Immunol* (2010) 32:361–9. doi:10.1111/j.1365-3024.2009.01196.x
- McNeilly TN, Rocchi M, Bartley Y, Brown JK, Frew D, Longhi C, et al. Suppression of ovine lymphocyte activation by *Teladorsagia circumcincta* larval excretory-secretory products. *Vet Res* (2013) 44:70. doi:10.1186/1297-9716-44-70
- Hoek A, Rutten VP, Kool J, Arkesteijn GJ, Bouwstra RJ, Van Rhijn I, et al. Subpopulations of bovine WC1(+) gammadelta T cells rather than CD4(+) CD25(high) Foxp3(+) T cells act as immune regulatory cells ex vivo. *Vet Res* (2009) 40:6. doi:10.1051/vetres:2008044
- Guzman E, Hope J, Taylor G, Smith AL, Cubillos-Zapata C, Charleston B. Bovine gammadelta T cells are a major regulatory T cell subset. *J Immunol* (2014) 193:208–22. doi:10.4049/jimmunol.1303398
- Wang Z, Navarro-Alvarez N, Shah JA, Zhang H, Huang Q, Zheng Q, et al. Porcine Treg depletion with a novel diphtheria toxin-based anti-human CCR4 immunotoxin. *Vet Immunol Immunopathol* (2016) 182:150–8. doi:10.1016/j.vetimm.2016.10.014
- Walsh KP, Brady MT, Finlay CM, Boon L, Mills KH. Infection with a helminth parasite attenuates autoimmunity through TGF-beta-mediated suppression of Th17 and Th1 responses. *J Immunol* (2009) 183:1577–86. doi:10.4049/jimmunol.0803803
- Appleman LJ, Boussiotis VA. T cell anergy and costimulation. *Immunol Rev* (2003) 192:161–80. doi:10.1034/j.1600-065X.2003.00009.x
- Nishimori A, Konnai S, Okagawa T, Maekawa N, Ikebuchi R, Goto S, et al. In vitro and in vivo antiviral activity of an anti-programmed death-ligand 1 (PD-L1) rat-bovine chimeric antibody against bovine leukemia virus infection. *PLoS One* (2017) 12:e0174916. doi:10.1371/journal.pone.0174916
- Wilson MS, Cheever AW, White SD, Thompson RW, Wynn TA. IL-10 blocks the development of resistance to re-infection with *Schistosoma mansoni*. *PLoS Pathog* (2011) 7:e1002171. doi:10.1371/journal.ppat.1002171
- Molina-Hernandez V, Mulcahy G, Perez J, Martinez-Moreno A, Donnelly S, O'Neill SM, et al. *Fasciola hepatica* vaccine: we may not be there yet but we're on the right road. *Vet Parasitol* (2015) 208:101–11. doi:10.1016/j.vetpar.2015.01.004
- Bourke CD, Nausch N, Rujeni N, Appleby LJ, Mitchell KM, Midzi N, et al. Integrated analysis of innate, Th1, Th2, Th17, and regulatory cytokines identifies changes in immune polarisation following treatment of human schistosomiasis. *J Infect Dis* (2013) 208:159–69. doi:10.1093/infdis/jis524
- Codner GF, Stear MJ, Reeve R, Matthews L, Ellis SA. Selective forces shaping diversity in the class I region of the major histocompatibility complex in dairy cattle. *Anim Genet* (2012) 43:239–49. doi:10.1111/j.1365-2052.2011.02239.x
- NEZD Division, Defra [Dataset]. *Data from: Most Common Breeds of Cattle in GB (NUTS 1 Areas)*. RADAR Cattle Population Dataset (2005). Available from: <http://webarchive.nationalarchives.gov.uk/20130822084033/http://www.defra.gov.uk/animalH/diseases/vetsurveillance/reports/pdf/cattle-gb010405.pdf>

**Conflict of Interest Statement:** The authors declare that the research was conducted in the absence of any commercial or financial relationships that could be construed as a potential conflict of interest.

The reviewer, MM, and handling editor declared their shared affiliation, and the handling editor states that the process nevertheless met the standards of a fair and objective review.

Copyright © 2017 Sachdev, Gough and Flynn. This is an open-access article distributed under the terms of the Creative Commons Attribution License (CC BY). The use, distribution or reproduction in other forums is permitted, provided the original author(s) or licensor are credited and that the original publication in this journal is cited, in accordance with accepted academic practice. No use, distribution or reproduction is permitted which does not comply with these terms.