

# Statistical Publication Notice

## Lifelong Learning Series

A National Statistics Publication for Scotland

### Early Destinations of Students Qualifying from Scottish Higher Education Institutions 2010-11

25<sup>th</sup> September 2012



Statistics on the first destinations of qualifiers from Scottish Higher Education Institutions (HEIs) are published today by Scotland's Chief Statistician. The publication reports on the destinations of the 2010-11 qualifiers from Scottish HEIs, 6 months after qualifying. Figures are shown for qualifiers at postgraduate, first degree and sub-degree level. This publication is an update of the 'Early Destinations of Students Qualifying from Scottish Higher Education Institutions 2009-10' publication, issued on the 27<sup>th</sup> September 2011.

### Summary of Key Findings

- 88.5 per cent of qualifiers from higher education courses at Scottish Higher Education Institutions (HEIs) were in employment or further study/training 6 months after completing their course. This is an increase of 0.7 percentage points since 2009-10 (87.9 per cent).
- 64.5 per cent of qualifiers from higher education courses at Scottish HEIs were in permanent or temporary UK employment 6 months after completing their course. A further 19.0 per cent were engaged in further study or training and 5.9 per cent were believed to be unemployed.
- 73.7 per cent of those in permanent UK employment were employed in graduate level occupations.

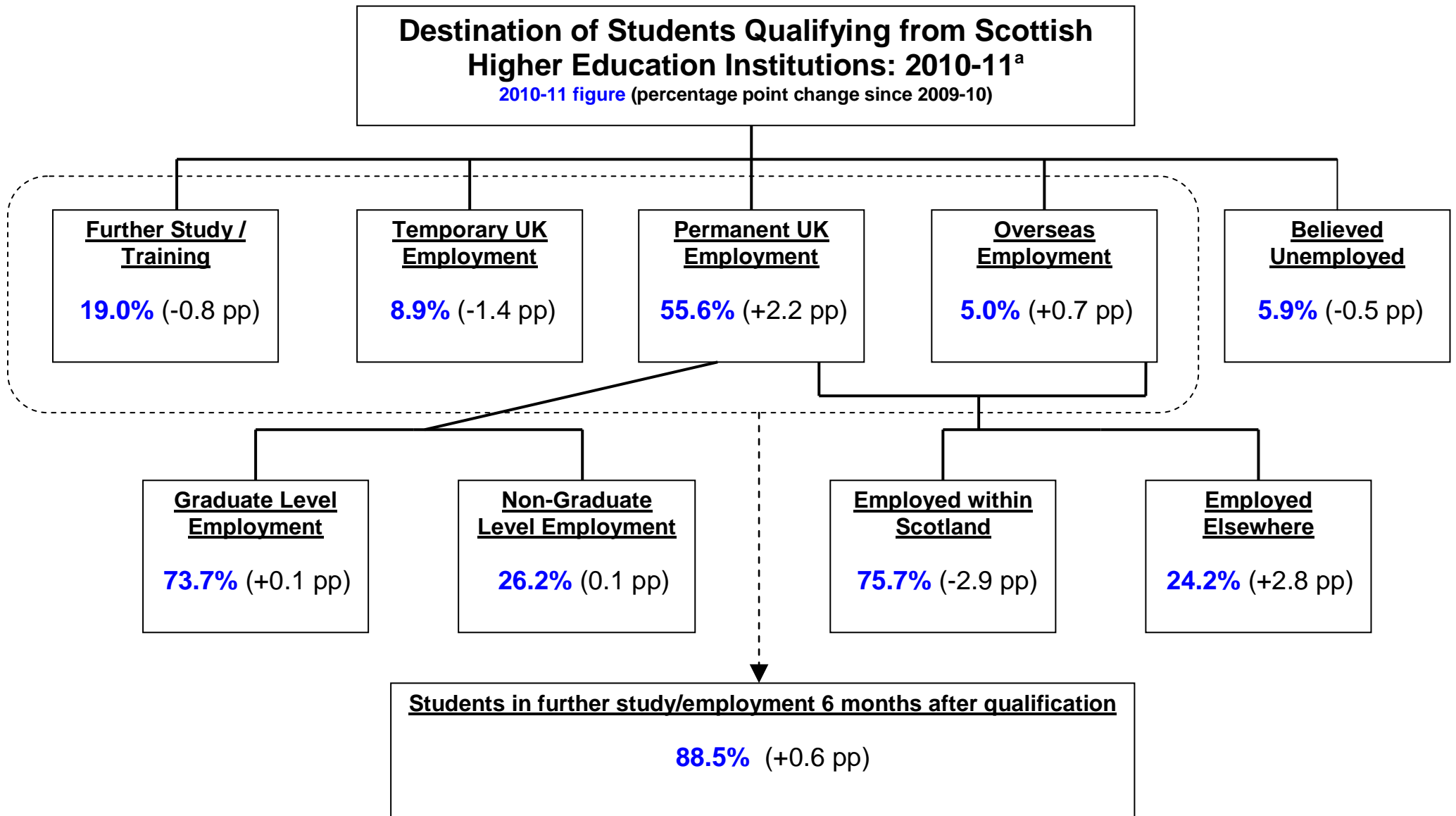
- The percentage of qualifiers in permanent UK or overseas employment, who were employed in Scotland, decreased, by 2.9 percentage points, from 78.6 per cent in 2009-10 to 75.7 per cent in 2010-11.
- The percentage of Scots qualifiers in permanent employment, who were employed in Scotland, decreased by 1.7 percentage points between 2009-10 (90.3 per cent) and 2010-11 (88.6 per cent).
- The percentage of Scots qualifying from Rest of UK HEIs in permanent employment, who were employed in Scotland, decreased by 5.1 percentage points, from 48.7 per cent in 2009-10 to 43.6 per cent in 2010-11.
- In 2010-11, 62.3 per cent of Scots postgraduate and first degree qualifiers from Scottish HEIs were employed in graduate level occupations within Scotland or engaged in further study or training 6 months after completing their higher education course. This percentage is a National Indicator in 'Scotland Performs'<sup>1</sup>. The percentage decreased by 0.7 percentage points between 2009-10 (63.1 per cent) and 2010-11.

Figure 1 provides a summary of the key results for 2010-11.

---

<sup>1</sup> ["Increase the percentage of Scottish domiciled graduates from Scottish Higher Education Institutions in positive destinations."](#)

Figure 1: Summary of Key Findings



<sup>a</sup> 5.5% of 2010-11 qualifiers were in 'Other' destinations.

<sup>b</sup> Percentages rounded to one decimal place, percentage point changes calculated using unrounded figures

## **Contents:**

**Page**

**[Summary of Key Findings](#)**

**1**

**[Contents](#)**

**4**

**[List of Tables](#)**

**5**

**[Analysis of Findings](#)**

**6**

**[Tables](#)**

**13**

**[Methodological Note](#)**

**24**

**[Notes to Tables and News Editors](#)**

**27**

**[Contact Details](#)**

**28**

## List of Tables

## Page

|   |    |
|---|----|
| Table 1: First destination of students qualifying from Scottish HEIs by gender and level of qualification obtained: 2010-11   | 13 |
| Table 2: First destination of students qualifying from Scottish HEIs by level of qualification obtained and academic year: 2003-04 to 2010-11                                     | 14 |
| Table 3: First destination of students qualifying from Scottish HEIs by subject area: 2010-11   | 15 |
| Table 4: First destination of Scottish domiciled students qualifying from full-time or part-time courses at Scottish HEIs by gender and level of qualification obtained: 2010-11  | 16 |
| Table 5 – First destination of Scottish domiciled students qualifying from Scottish HEIs by ethnicity: 2010-11  | 17 |
| Table 6: Students qualifying from Scottish HEIs gaining permanent UK employment by occupation, level of qualification obtained and academic year: 2003-04 to 2010-11              | 18 |
| Table 7: Students qualifying from Scottish HEIs gaining permanent UK employment by industry of employer and subject of qualification: 2010-11                                     | 19 |
| Table 8a): Students qualifying from Scottish HEIs gaining permanent UK or overseas employment by pre-study domicile, location of employment and academic year: 2003-04 to 2010-11 | 20 |
| Table 8b): Scottish domiciled students qualifying from Rest of UK HEIs gaining permanent UK or overseas employment by location and academic year: 2003-04 to 2010-11              | 21 |
| Table 9: Students qualifying from Scottish HEIs gaining permanent UK or overseas employment by subject studied and location of employment: 2010-11                                | 22 |
| Table 10: Response rate to Destinations of Leavers from Higher Education (DLHE) survey for students qualifying from Scottish HEIs: 2003-4 to 2010-11                              | 23 |

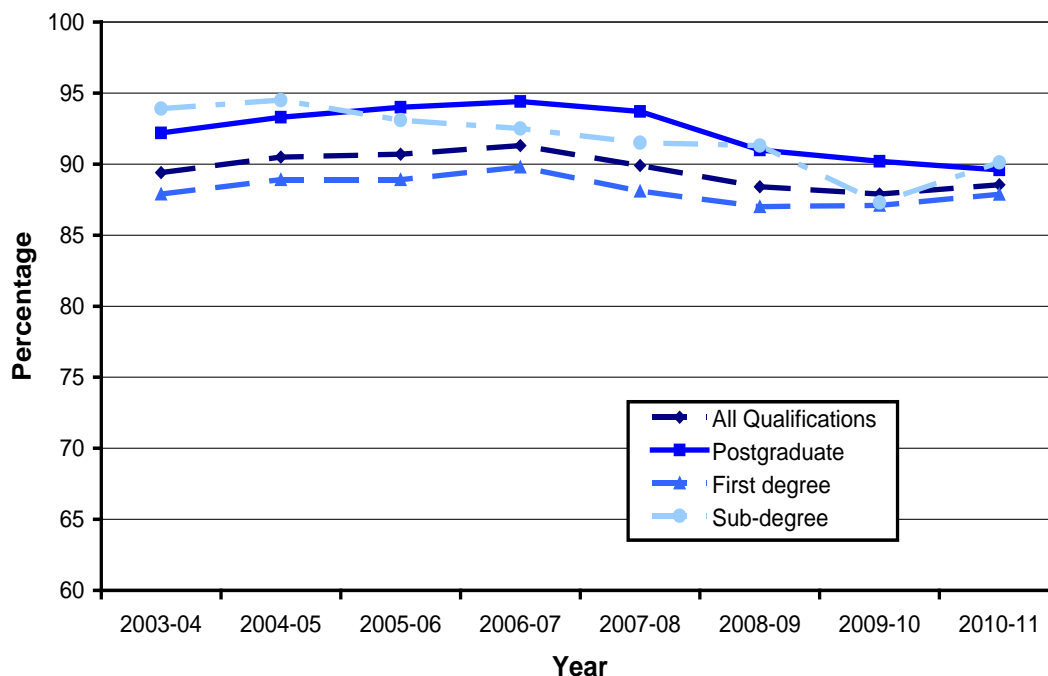
## Analysis of Findings

This section provides an analysis of the main findings from this year's data. The information relates to the immediate destinations (six months after qualifying) of students gaining higher education (HE) qualifications from Scottish Higher Education Institutions (HEIs) – such students will be referred to as qualifiers in the remainder of this release.

### First destinations

Figure 2 shows the percentage of qualifiers engaged in further study or employment by level of qualification. Between 2006-07 and 2008-09, the percentage of qualifiers in employment, study or training, decreased from 91.3% to 88.4%. During this period unemployment levels rose (Table 2). These results may well be associated with the start of the UK recession, which began in the second quarter of 2008. Between 2008-09 and 2010-11, the percentage of qualifiers in employment, study or training, was relatively stable. There was a decrease of 0.5 percentage points over the year to 2008-09 (87.9%) followed by an increase of 0.7 percentage points over the year to 2010-11 (88.5%).

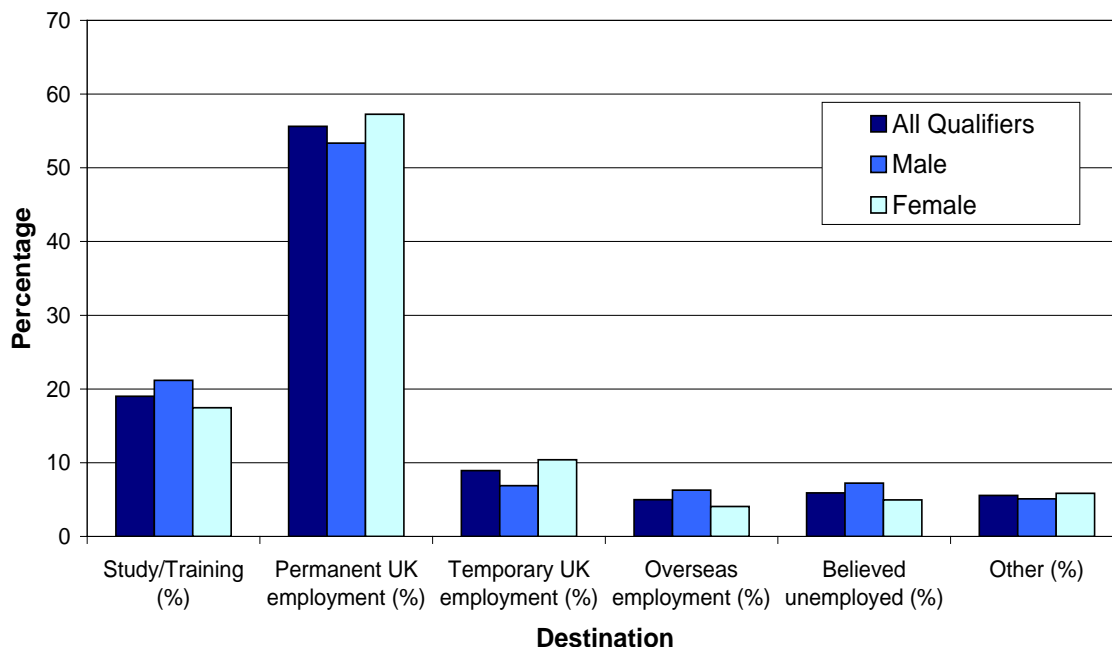
**Figure 2: First destination of students qualifying from Scottish HEIs in further study, training or employment: 2003-04 to 2010-11**



Reference: Table 2 (page 14)

With just over half (55.6%) of qualifiers engaged in permanent employment within the UK, this is the most common destination for qualifiers (Figure 3). A further 19.0% of qualifiers are engaged in further study or training activities and 8.9% were working under temporary contracts. The percentage of qualifiers who were believed to be unemployed was 5.9%.

**Figure 3: First destination of students qualifying from Scottish HEIs by gender: 2010-11**



Reference: Table 1 (page 13)

The pattern of destinations is broadly similar for male and female qualifiers. A slightly higher proportion of males were engaged in further study/training, overseas employment and unemployment, with a higher proportion of females seen in permanent or temporary employment in the UK.

Where there are differences between the genders, it should not be assumed that gender is the direct cause. Other, indirect effects related to gender, such as subject studied, may also impact on destinations of qualifiers. For example, those qualifying in the traditionally male dominated subject of Engineering and Technology show a lower than average percentage of qualifiers going into permanent UK employment (57.4%); while those qualifying in the traditionally female subject of Veterinary Science show a higher than average percentage of qualifiers going in to permanent employment (80.6%) (Table 3).

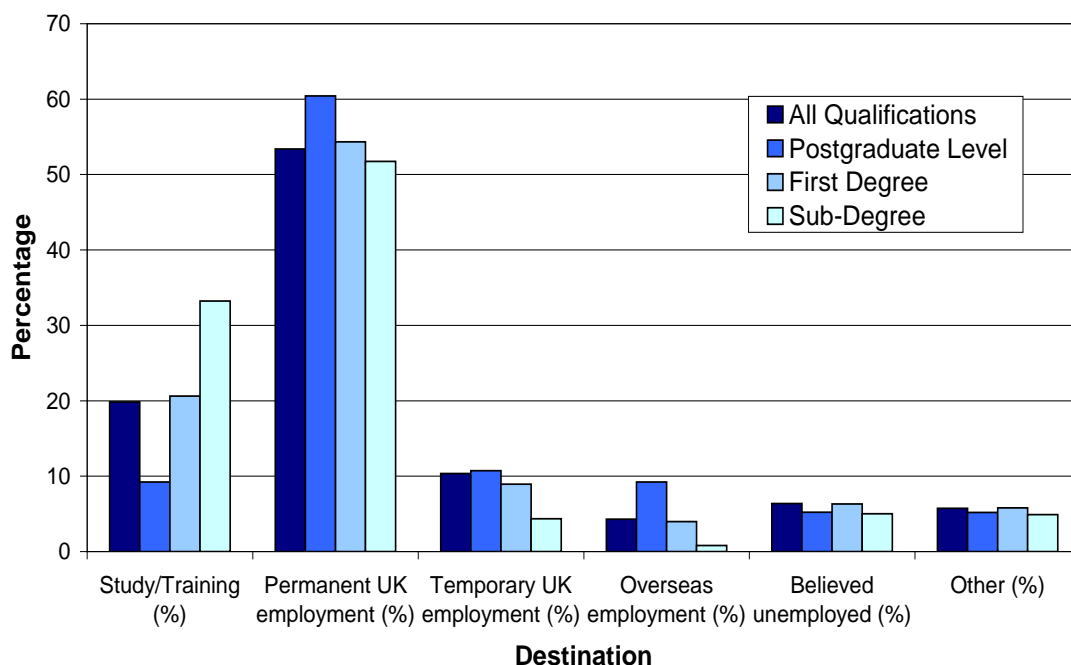
## Factors associated with first destinations of qualifiers

The destination of a student after qualifying will be influenced by a number of factors including: the level of qualification achieved; the subject studied; where the qualifier was living prior to study (e.g. living overseas, in Scotland); whether they were in employment or not prior to/during study; how much time has passed since qualifying; and the wider labour market conditions at the time of qualification.

### Level of qualification

Figure 4 shows the relationship between the qualifier's first destination and the level of qualification obtained. Postgraduate qualifiers were more likely to be in permanent UK employment (60.4%) than other groups, while those with qualifications below degree level were more likely to be undertaking further study or training than other groups (33.2%).

**Figure 4: First destination of students qualifying from Scottish HEIs by level of qualification obtained: 2010-11**



Reference: Table 1 (page 13)

Intuitively, it might be expected that qualifiers with the highest level of qualifications would have the highest employment rates; however it is worth noting that the activities of students prior to, or during, study may also impact on employment prospects and will vary by qualification level. For example, many postgraduate qualifications are undertaken by those already in employment, perhaps to formalise their experience or to meet requirements of their employers. It could therefore be expected that a higher proportion of postgraduate qualifiers will return to their employment post-study. Similarly, sub-degree qualifications tend to be shorter in duration than first degree qualifications. This may make them more attractive to



prospective students already in permanent employment, who are looking to study part-time or to attain qualifications desired/required by their employer.

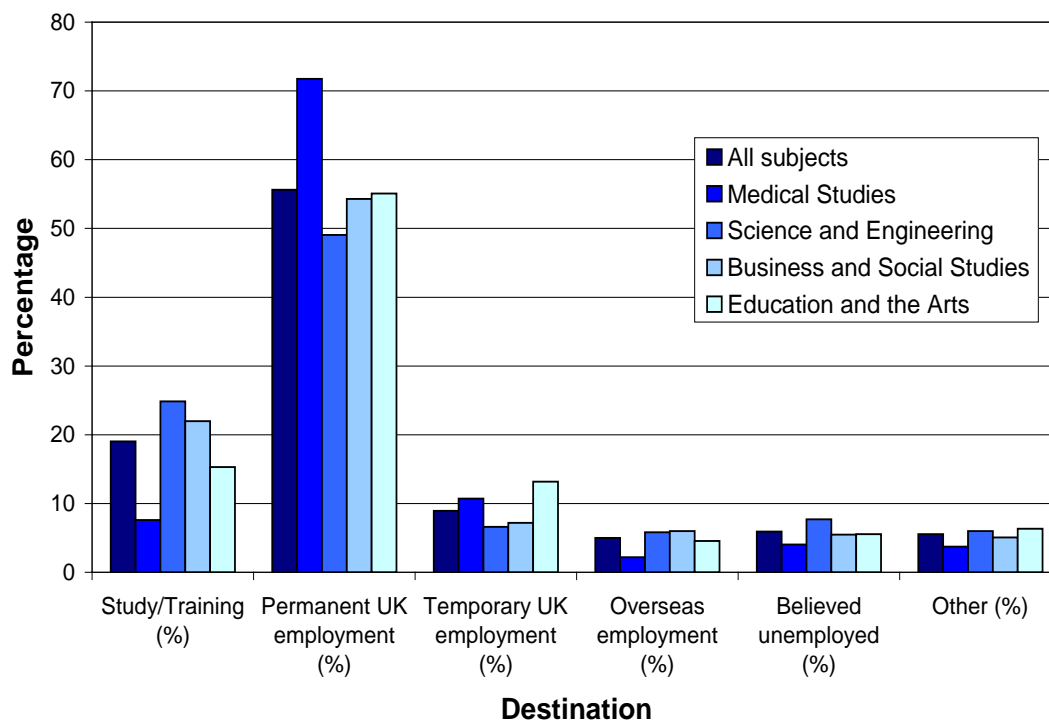
It might also be expected that those with lower levels of qualifications are the most likely to go on to further study or training as they are likely to be at an earlier stage in their education career. There are also limited options for higher levels of study for those qualifying at postgraduate level.

Despite the relatively lower permanent employment rates of first degree qualifiers, it is worth bearing in mind that those with degree level qualifications display higher levels of employment in Scotland's labour market than those without<sup>2</sup>. It is also worth noting that at six months after graduation, some first degree qualifiers may not yet have started employment.

### Subject of study

Figure 5 presents the destinations of qualifiers by the subject of their qualification. Those with Science, Engineering and Technology qualifications were the most likely to be undertaking further study or training activities (24.9%) and were also slightly more likely than others to be unemployed (7.7%). Those with medical qualifications were the most likely to be in permanent UK employment (71.7%).

**Figure 5: First destination of students qualifying from Scottish HEIs by subject area: 2010-11**



Reference: Table 3 (page 15)

<sup>2</sup> Local Area Labour Markets in Scotland Statistics from the Annual Population Survey 2010, Chapter 4:

<http://www.scotland.gov.uk/Publications/2011/08/09172458/0>

Students achieving qualifications in Education and the Arts were the most likely group to enter into temporary UK employment (13.2%); this was mainly because of qualifiers from Education subjects, of whom 20.6% entered temporary employment. This may be related to the Teacher Induction Scheme – a national induction programme for newly qualified, Scottish trained teachers that guarantees a one-year teaching post in a Scottish local authority.

### Other factors

The destination of qualifiers six months after graduation may also be influenced by the qualifier's main residence. For example, it is possible that Scottish based students are more likely to be looking for employment within Scotland and therefore can attend interviews locally during their studies. This may not be an option for foreign based students if they are looking for employment in their home country, as they may have to wait until they have qualified and returned home before applying for jobs. We could therefore expect a longer period between qualifying and employment for the latter group of qualifiers, which may impact on figures captured 6 months after qualifying. The percentage of Scottish-based qualifiers in employment was 73.3%, compared with 69.5% for all qualifiers (Table 4 and Table 1).

## **Qualifiers in Employment**

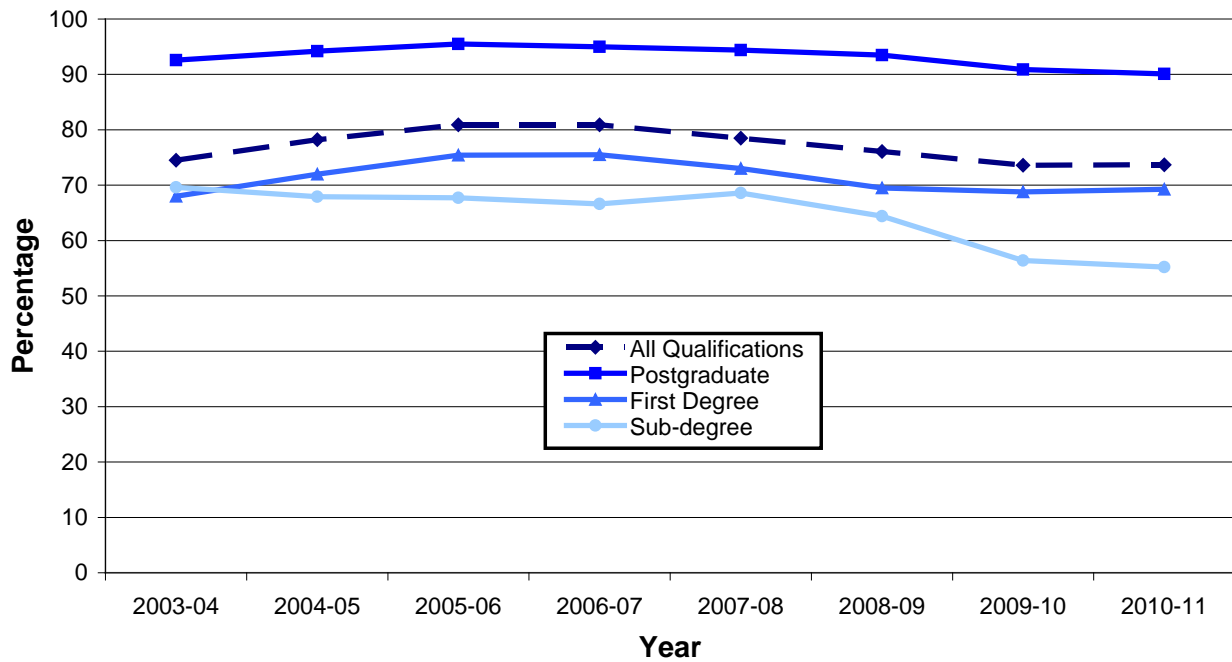
### Graduate level employment

It is possible to divide occupations into those that are considered 'graduate level' and 'non-graduate level' occupations in the labour market<sup>3</sup>. Figure 6 shows that overall, 73.7% of qualifiers in permanent UK employment were in graduate level jobs – with postgraduates the most likely (90.1%) to be employed in such occupations in comparison with degree (69.2%) and sub-degree (55.2%) level qualifiers.

---

<sup>3</sup> Elias & Purcell classification; Elias, P. and Purcell, K. (2004) SOC (HE) A classification of occupations for studying the graduate labour market. Warwick: Institute for Employment Research.

**Figure 6: Graduate level occupations (of those in permanent employment) achieved by students qualifying from Scottish HEIs by level of qualification achieved: 2003-04 to 2010-11**



Reference: Table 6 (page 18)

In 2005-06 and 2006-07, 80.9% of qualifiers in permanent UK employment were working in graduate level jobs. This percentage decreased year on year from 2006-07 until 2009-10, but increased marginally over the year to 2010-11.

However, the overall percentage of qualifiers in any level of permanent UK employment (which fell year on year from 2004-05 to 2008-09) rose marginally over the year to 2009-10 (by 0.4 percentage points) and rose again (by 2.2 percentage points) over the year to 2010-11 (Table 2). This finding echoes recent analysis of the Annual Population Survey<sup>4</sup> which suggests that since the onset of the recession, graduates have been less likely to find graduate level employment, but have remained less likely to be unemployed than those without degree level qualifications.

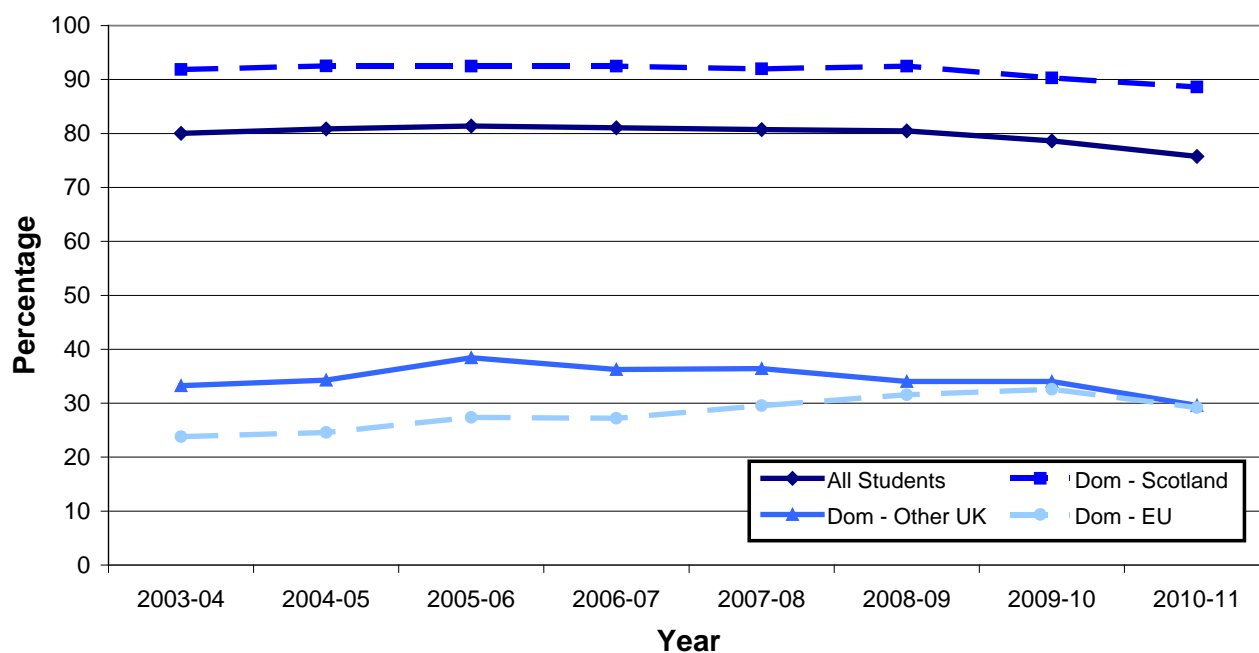
In addition, Table 6 suggests that there may have been a shift in the level of occupations postgraduate students are entering: the percentage in 'associate professional and technical' and 'management' jobs increased, while the percentage in 'professional' jobs decreased.

<sup>4</sup> Local Area Labour Markets in Scotland Statistics from the Annual Population Survey 2010:

<http://www.scotland.gov.uk/Publications/2011/08/09172458/0>

## Location of Employment

**Figure 7: Students qualifying from Scottish HEIs gaining permanent UK employment: proportion employed in Scotland by pre-study domicile and academic year: 2003-04 to 2010-11**



Reference: Table 8a (page 20)

Figure 7 shows the percentage of qualifiers in permanent employment who found employment within Scotland. For Scottish domiciled qualifiers, this percentage had remained relatively stable (at around 92%) from 2003-04 to 2008-09 but decreased over the year to 2009-10 and over the year to 2010-11 (88.6%). Since 2003-04, there has been an increasing trend in the percentage of EU domiciled qualifiers remaining in Scotland to work; in 2010-11 29.2% remained in Scotland, compared with 23.8% in 2003-04. Most of those who lived elsewhere in the UK before studying in Scotland, and found permanent work since qualifying, returned to parts of the UK other than Scotland for work (62.3%). The percentage of this group who found permanent work in Scotland fell substantially between 2009-10 (34.0%) and 2010-11 (29.6%).

## Tables

**Table 1: First destination of students qualifying from Scottish HEIs by gender and level of qualification obtained: 2010-11**

|                           | Total No.of Students | Study/ Training (%) | Permanent UK employment (%) | Temporary UK employment (%) | Overseas employment (%) | Believed Unemployed (%) | Other (%)  |
|---------------------------|----------------------|---------------------|-----------------------------|-----------------------------|-------------------------|-------------------------|------------|
| <b>All Qualifications</b> | <b>44,870</b>        | <b>19.0</b>         | <b>55.6</b>                 | <b>8.9</b>                  | <b>5.0</b>              | <b>5.9</b>              | <b>5.5</b> |
| Male                      | 18,820               | 21.2                | 53.3                        | 6.9                         | 6.3                     | 7.2                     | 5.1        |
| Female                    | 26,050               | 17.5                | 57.3                        | 10.4                        | 4.1                     | 5.0                     | 5.9        |
| <b>Postgraduate</b>       | <b>11,470</b>        | <b>9.2</b>          | <b>60.4</b>                 | <b>10.7</b>                 | <b>9.2</b>              | <b>5.2</b>              | <b>5.2</b> |
| Male                      | 5,110                | 9.5                 | 58.8                        | 8.6                         | 12.2                    | 5.7                     | 5.2        |
| Female                    | 6,360                | 9.0                 | 61.7                        | 12.4                        | 6.8                     | 4.9                     | 5.2        |
| <b>First Degree</b>       | <b>28,745</b>        | <b>20.6</b>         | <b>54.3</b>                 | <b>8.9</b>                  | <b>4.0</b>              | <b>6.3</b>              | <b>5.8</b> |
| Male                      | 11,710               | 23.2                | 52.1                        | 6.8                         | 4.6                     | 8.1                     | 5.2        |
| Female                    | 17,035               | 18.8                | 55.9                        | 10.4                        | 3.6                     | 5.1                     | 6.2        |
| <b>Sub-Degree</b>         | <b>4,655</b>         | <b>33.2</b>         | <b>51.7</b>                 | <b>4.4</b>                  | <b>0.8</b>              | <b>5.0</b>              | <b>4.9</b> |
| Male                      | 2,000                | 38.9                | 46.5                        | 3.2                         | 1.0                     | 6.4                     | 4.1        |
| Female                    | 2,660                | 28.9                | 55.6                        | 5.2                         | 0.7                     | 4.0                     | 5.5        |

Source: Higher Education Statistics Agency (HESA).

Data has been weighted according to response rates (see methodological statement page 25).

"Total No. of Students" has been rounded to the nearest 5.

**Table 2: First destination of higher education qualifiers from Scottish HEIs by level of qualification obtained and academic year: 2003-04 to 2010-11**

|                           | Total No. Of Students | Study/ Training (%) | Permanent UK employment (%) | Temporary UK employment (%) | Overseas employment (%) | Believed Unemployed (%) | Other (%)  |
|---------------------------|-----------------------|---------------------|-----------------------------|-----------------------------|-------------------------|-------------------------|------------|
| <b>All Qualifications</b> |                       |                     |                             |                             |                         |                         |            |
| 2003-04                   | 39,155                | 17.9                | 59.5                        | 7.7                         | 4.2                     | 5.1                     | 5.5        |
| 2004-05                   | 42,455                | 16.4                | 61.1                        | 8.6                         | 4.4                     | 4.4                     | 5.2        |
| 2005-06                   | 42,725                | 17.4                | 59.9                        | 8.7                         | 4.6                     | 4.2                     | 5.2        |
| 2006-07                   | 44,200                | 17.5                | 59.6                        | 9.5                         | 4.7                     | 3.7                     | 5.0        |
| 2007-08                   | 42,650                | 18.9                | 56.3                        | 10.5                        | 4.1                     | 4.9                     | 5.2        |
| 2008-09                   | 43,810                | 22.5                | 53.0                        | 9.4                         | 3.6                     | 6.1                     | 5.5        |
| 2009-10                   | 42,880                | 19.8                | 53.4                        | 10.4                        | 4.3                     | 6.4                     | 5.7        |
| <b>2010-11</b>            | <b>44,870</b>         | <b>19.0</b>         | <b>55.6</b>                 | <b>8.9</b>                  | <b>5.0</b>              | <b>5.9</b>              | <b>5.5</b> |
| <b>Postgraduate</b>       |                       |                     |                             |                             |                         |                         |            |
| 2003-04                   | 8,540                 | 7.7                 | 70.9                        | 7.2                         | 6.4                     | 4.4                     | 3.4        |
| 2004-05                   | 10,945                | 7.5                 | 70.5                        | 8.7                         | 6.6                     | 3.3                     | 3.4        |
| 2005-06                   | 10,995                | 6.7                 | 70.9                        | 10.5                        | 6.0                     | 2.7                     | 3.3        |
| 2006-07                   | 11,800                | 6.4                 | 71.1                        | 9.8                         | 7.1                     | 2.7                     | 2.9        |
| 2007-08                   | 10,680                | 6.8                 | 62.5                        | 17.5                        | 6.9                     | 2.8                     | 3.5        |
| 2008-09                   | 10,750                | 7.1                 | 63.4                        | 13.4                        | 7.1                     | 4.6                     | 4.4        |
| 2009-10                   | 10,585                | 9.4                 | 58.9                        | 14.7                        | 7.2                     | 4.9                     | 4.9        |
| <b>2010-11</b>            | <b>11,470</b>         | <b>9.2</b>          | <b>60.4</b>                 | <b>10.7</b>                 | <b>9.2</b>              | <b>5.2</b>              | <b>5.2</b> |
| <b>First Degree</b>       |                       |                     |                             |                             |                         |                         |            |
| 2003-04                   | 26,730                | 19.1                | 56.2                        | 8.4                         | 4.1                     | 5.7                     | 6.4        |
| 2004-05                   | 27,800                | 17.9                | 57.9                        | 9.1                         | 4.0                     | 4.9                     | 6.2        |
| 2005-06                   | 27,580                | 18.6                | 56.9                        | 8.7                         | 4.7                     | 4.9                     | 6.1        |
| 2006-07                   | 28,170                | 20.1                | 55.5                        | 10.0                        | 4.3                     | 4.2                     | 6.0        |
| 2007-08                   | 27,380                | 21.5                | 54.3                        | 8.8                         | 3.6                     | 6.0                     | 5.9        |
| 2008-09                   | 28,365                | 25.3                | 50.2                        | 8.8                         | 2.8                     | 6.9                     | 6.2        |
| 2009-10                   | 28,130                | 22.1                | 51.5                        | 9.7                         | 3.7                     | 7.0                     | 6.0        |
| <b>2010-11</b>            | <b>28,745</b>         | <b>20.6</b>         | <b>54.3</b>                 | <b>8.9</b>                  | <b>4.0</b>              | <b>6.3</b>              | <b>5.8</b> |
| <b>Sub-Degree</b>         |                       |                     |                             |                             |                         |                         |            |
| 2003-04                   | 3,880                 | 32.3                | 57.1                        | 4.0                         | 0.5                     | 2.4                     | 3.7        |
| 2004-05                   | 3,715                 | 31.7                | 57.5                        | 4.8                         | 0.5                     | 3.2                     | 2.4        |
| 2005-06                   | 4,150                 | 38.0                | 50.7                        | 3.9                         | 0.7                     | 3.2                     | 3.7        |
| 2006-07                   | 4,230                 | 31.2                | 55.0                        | 5.2                         | 1.1                     | 2.9                     | 4.6        |
| 2007-08                   | 4,590                 | 31.8                | 53.7                        | 4.9                         | 1.1                     | 3.5                     | 5.1        |
| 2008-09                   | 4,695                 | 40.7                | 46.1                        | 3.6                         | 0.8                     | 4.5                     | 4.2        |
| 2009-10                   | 4,165                 | 31.2                | 51.8                        | 3.6                         | 0.7                     | 6.2                     | 6.5        |
| <b>2010-11</b>            | <b>4,655</b>          | <b>33.2</b>         | <b>51.7</b>                 | <b>4.4</b>                  | <b>0.8</b>              | <b>5.0</b>              | <b>4.9</b> |

Source: Higher Education Statistics Agency (HESA).

Data has been weighted according to response rates (see methodological statement page 25)

"Total No. of Students" has been rounded to the nearest 5

**Table 3: First Destinations of students qualifying from Scottish HEIs by subject area: 2010-11**

|  | Total No. of Students | Study/Training (%) | Permanent UK employment (%) | Temporary UK employment (%) | Overseas employment (%) | Believed Unemployed (%) | Other (%)   |
|--|-----------------------|--------------------|-----------------------------|-----------------------------|-------------------------|-------------------------|-------------|
| <b>All subjects</b>                                      | <b>44,870</b>         | <b>19.0</b>        | <b>55.6</b>                 | <b>8.9</b>                  | <b>5.0</b>              | <b>5.9</b>              | <b>5.5</b>  |
| <b>Medical Studies</b>                                   | <b>6,835</b>          | <b>7.6</b>         | <b>71.7</b>                 | <b>10.7</b>                 | <b>2.2</b>              | <b>4.0</b>              | <b>3.7</b>  |
| Allied Medicine  | 5,630                 | 8.2                | 68.6                        | 11.7                        | 2.5                     | 4.7                     | 4.3         |
| Medicine and Dentistry                                   | 1,205                 | 5.0                | 86.3                        | 6.3                         | 0.6                     | 0.7                     | 1.2         |
| <b>Science and Engineering</b>                           | <b>12,825</b>         | <b>24.9</b>        | <b>49.1</b>                 | <b>6.6</b>                  | <b>5.8</b>              | <b>7.7</b>              | <b>6.0</b>  |
| Agriculture  | 415                   | 31.6               | 39.4                        | 5.6                         | 9.4                     | 5.8                     | 8.5         |
| Biological Sciences                                      | 3,835                 | 28.4               | 45.2                        | 8.5                         | 4.1                     | 6.8                     | 7.0         |
| Engineering and Technology                               | 3,520                 | 18.7               | 57.4                        | 4.7                         | 6.7                     | 7.0                     | 5.6         |
| Information Technology                                   | 2,030                 | 23.2               | 48.7                        | 6.4                         | 6.2                     | 10.8                    | 4.7         |
| Mathematical Sciences                                    | 655                   | 27.9               | 50.4                        | 6.4                         | 4.7                     | 5.2                     | 5.5         |
| Physical Sciences  | 2,205                 | 30.0               | 41.7                        | 6.9                         | 6.8                     | 8.7                     | 6.0         |
| Veterinary Science                                       | 175                   | 0.0                | 80.6                        | 6.3                         | 4.6                     | 6.9                     | 2.3         |
| <b>Business and Social Studies</b>                       | <b>14,440</b>         | <b>22.0</b>        | <b>54.3</b>                 | <b>7.2</b>                  | <b>6.0</b>              | <b>5.5</b>              | <b>5.1</b>  |
| Architecture   | 1,585                 | 21.3               | 53.9                        | 6.3                         | 7.9                     | 6.2                     | 4.5         |
| Business Administration                                  | 6,110                 | 18.7               | 58.3                        | 6.4                         | 6.7                     | 5.3                     | 4.6         |
| Law  | 2,280                 | 38.1               | 42.1                        | 6.7                         | 4.7                     | 4.5                     | 4.0         |
| Mass Communication                                       | 720                   | 8.5                | 58.9                        | 12.0                        | 5.2                     | 7.5                     | 7.8         |
| Social Studies   | 3,755                 | 20.4               | 54.4                        | 8.3                         | 4.9                     | 5.7                     | 6.3         |
| <b>Education and the Arts</b>                            | <b>10,375</b>         | <b>15.3</b>        | <b>55.1</b>                 | <b>13.2</b>                 | <b>4.5</b>              | <b>5.6</b>              | <b>6.3</b>  |
| Creative Arts  | 2,470                 | 17.4               | 53.9                        | 8.8                         | 4.0                     | 8.5                     | 7.5         |
| Education  | 4,040                 | 2.7                | 71.6                        | 20.6                        | 1.2                     | 1.7                     | 2.3         |
| Humanities   | 1,805                 | 28.4               | 40.5                        | 8.7                         | 4.0                     | 8.0                     | 10.3        |
| Languages  | 2,060                 | 26.0               | 37.1                        | 7.8                         | 12.3                    | 7.5                     | 9.3         |
| <b>Multi-Disciplinary Studies</b>                        | <b>395</b>            | <b>16.3</b>        | <b>54.2</b>                 | <b>4.3</b>                  | <b>1.3</b>              | <b>5.1</b>              | <b>18.8</b> |
| <b>Supplementary Subjects not contained in the above</b> |                       |                    |                             |                             |                         |                         |             |
| Economics and Politics                                   | 1,185                 | 26.0               | 39.7                        | 8.7                         | 9.7                     | 8.1                     | 7.8         |
| English  | 925                   | 28.1               | 38.5                        | 8.4                         | 6.5                     | 8.3                     | 10.1        |
| Geography  | 625                   | 23.2               | 41.5                        | 10.9                        | 3.8                     | 11.4                    | 9.1         |
| Psychology   | 1,420                 | 21.1               | 51.4                        | 9.8                         | 3.9                     | 5.7                     | 8.0         |

Source: Higher Education Statistics Agency (HESA).

Data has been weighted according to response rates (see methodological statement page 25).

"Total No. of Students" has been rounded to the nearest 5

**Table 4: First destination of Scottish domiciled students qualifying from full-time or part-time courses at Scottish HEIs by gender and level of qualification obtained: 2010-11**

|                           | Total No. of Students | Study/Training (%) | Employed within Scotland (%) | Employed elsewhere (%) | Believed unemployed (%) | Other (%)  | Employment in graduate level occupations (%) using Elias & Purcell Classifications <sup>1</sup> |             |                                 |
|---------------------------|-----------------------|--------------------|------------------------------|------------------------|-------------------------|------------|---|-------------|---------------------------------|
|                           |                       |                    |                              |                        |                         |            | UK  | Scotland    | National Indicator <sup>2</sup> |
| <b>All Qualifications</b> | <b>25,485</b>         | <b>16.0</b>        | <b>65.4</b>                  | <b>7.9</b>             | <b>5.6</b>              | <b>5.1</b> | <b>54.8</b>   | <b>46.3</b> | <b>62.3</b>                     |
| Male                      | 10,250                | 18.7               | 60.7                         | 9.1                    | 7.2                     | 4.4        | 52.5  | 42.9        | 61.1                            |
| Female                    | 15,235                | 14.2               | 68.6                         | 7.1                    | 4.6                     | 5.5        | 56.2  | 48.7        | 63.1                            |
| <b>Postgraduate</b>       | <b>5,765</b>          | <b>6.7</b>         | <b>76.8</b>                  | <b>8.1</b>             | <b>3.9</b>              | <b>4.4</b> | <b>78.3</b>   | <b>69.2</b> | <b>75.9</b>                     |
| Male                      | 2,335                 | 7.6                | 72.7                         | 10.6                   | 4.7                     | 4.3        | 76.3  | 64.7        | 72.3                            |
| Female                    | 3,435                 | 6.1                | 79.6                         | 6.4                    | 3.4                     | 4.4        | 79.6  | 72.2        | 78.3                            |
| <b>First degree</b>       | <b>16,650</b>         | <b>16.1</b>        | <b>63.3</b>                  | <b>8.8</b>             | <b>6.3</b>              | <b>5.4</b> | <b>50.6</b>   | <b>41.5</b> | <b>57.6</b>                     |
| Male                      | 6,615                 | 18.6               | 58.7                         | 9.9                    | 8.2                     | 4.6        | 48.9  | 38.5        | 57.1                            |
| Female                    | 10,035                | 14.5               | 66.3                         | 8.2                    | 5.1                     | 5.9        | 51.8  | 43.4        | 58.0                            |
| <b>Sub-Degree</b>         | <b>3,070</b>          | <b>32.4</b>        | <b>55.6</b>                  | <b>2.3</b>             | <b>5.0</b>              | <b>4.8</b> | <b>32.8</b>   | <b>29.8</b> | <b>-</b>                        |
| Male                      | 1,300                 | 38.6               | 49.2                         | 2.3                    | 6.1                     | 3.8        | 28.4  | 26.0        | -                               |
| Female                    | 1,765                 | 27.8               | 60.3                         | 2.3                    | 4.1                     | 5.5        | 36.1  | 32.6        | -                               |

Source: Higher Education Statistics Agency (HESA).

"Total No. of Students" has been rounded to the nearest 5.

1. Elias & Purcell classification; Elias, P. and Purcell, K. (2004) SOC (HE) A classification of occupations for studying the graduate labour market. Warwick: Institute for Employment Research.

2. These values are a measure of the Scottish Government's national indicator and are only available for postgraduate and first degrees. This indicator measures the percentage of Scottish domiciled qualifiers from HEIs that are in graduate level jobs in Scotland or in continued study after qualifying. More information about the Scottish Government's performance framework, including national indicators can be found at the following web address: <http://www.scotland.gov.uk/About/scotPerforms> The comparable figure for 2009-10 was 63.1% and the full time-series can be found at the web address above.



**Table 5: First destination of Scottish domiciled students qualifying from Scottish HEIs by ethnicity: 2010-11**

|                               | <b>Total No. of Students</b> | <b>Study/Training (%)</b> | <b>Permanent UK employment (%)</b> | <b>Temporary UK employment (%)</b> | <b>Overseas employment (%)</b> | <b>Believed Unemployed (%)</b> | <b>Other (%)</b> |
|-------------------------------|------------------------------|---------------------------|------------------------------------|------------------------------------|--------------------------------|--------------------------------|------------------|
| <b>All ethnic backgrounds</b> | <b>33,435</b>                | <b>16.0</b>               | <b>61.5</b>                        | <b>9.7</b>                         | <b>2.1</b>                     | <b>5.6</b>                     | <b>5.1</b>       |
| Asian - Chinese               | 210                          | 16.5                      | 55.2                               | 3.8                                | 6.1                            | 11.3                           | 7.5              |
| Asian - Indian                | 190                          | 19.8                      | 55.2                               | 12.5                               | 2.1                            | 6.3                            | 4.2              |
| Asian - Pakistani             | 405                          | 20.6                      | 52.8                               | 8.8                                | 0.7                            | 12.3                           | 4.7              |
| Asian - other                 | 120                          | 24.2                      | 44.2                               | 6.7                                | 2.5                            | 13.3                           | 10.0             |
| Black                         | 195                          | 16.8                      | 52.6                               | 6.1                                | 2.6                            | 13.8                           | 7.7              |
| White                         | 31,080                       | 15.9                      | 61.7                               | 9.8                                | 2.1                            | 5.4                            | 5.0              |
| Mixed background              | 305                          | 19.9                      | 53.6                               | 7.8                                | 2.6                            | 9.5                            | 6.9              |
| Other ethnic background       | 90                           | 21.6                      | 51.1                               | 5.7                                | 1.1                            | 10.2                           | 10.2             |
| Unknown                       | 795                          | 11.6                      | 70.1                               | 7.7                                | 1.5                            | 5.4                            | 3.8              |

Source: Higher Education Statistics Agency (HESA).

Data has been weighted according to response rates (see methodological statement page 25)

"Total No. of Students" has been rounded to the nearest 5.

**Table 6: Students qualifying from Scottish HEIs gaining permanent UK employment by occupation, level of qualification obtained and academic year: 2003-04 to 2010-11**

|                           | Total No. of Students | Managers and Senior Officials (%) | Professionals (%) | Associate Professional and Technical (%) | Administrative and Secretarial (%) | Skilled Trades (%) | Personal Service (%) | Sales and Customer Service (%) | Plant and Machine Operatives (%) | Other (%)  | Elias & Purcell Classification <sup>1</sup> |                                |                  |  |
|---------------------------|-----------------------|-----------------------------------|-------------------|--|------------------------------------|--------------------|----------------------|--------------------------------|----------------------------------|------------|---|--------------------------------|------------------|--|
|                           |                       |                                   |                   |  |                                    |                    |                      |                                |                                  |            | Graduate level occupations (%)              | Non-graduate level occupations | Unclassified (%) |  |
| <b>All Qualifications</b> |                       |                                   |                   |  |                                    |                    |                      |                                |                                  |            |   |                                |                  |  |
| 2003-04                   | 23,305                | 9.4                               | 36.8              | 29.6                                     | 8.5                                | 1.1                | 3.0                  | 7.4                            | 0.6                              | 3.5        | 74.5  | 25.2                           | 0.2              |  |
| 2004-05                   | 25,940                | 10.0                              | 38.2              | 31.4                                     | 7.0                                | 0.9                | 2.7                  | 6.7                            | 0.4                              | 2.5        | 78.2  | 21.6                           | 0.1              |  |
| 2005-06                   | 25,595                | 10.2                              | 42.8              | 29.0                                     | 5.8                                | 0.8                | 2.6                  | 5.6                            | 0.3                              | 2.7        | 80.9  | 19.1                           | 0.1              |  |
| 2006-07                   | 26,340                | 9.1                               | 43.5              | 29.5                                     | 5.8                                | 0.8                | 2.6                  | 5.6                            | 0.3                              | 2.5        | 80.9  | 18.8                           | 0.2              |  |
| 2007-08                   | 24,005                | 9.4                               | 40.3              | 29.9                                     | 5.7                                | 0.9                | 3.3                  | 6.4                            | 0.4                              | 3.3        | 78.5  | 21.2                           | 0.3              |  |
| 2008-09                   | 23,205                | 9.2                               | 39.4              | 28.5                                     | 5.5                                | 1.0                | 3.6                  | 8.0                            | 0.5                              | 4.2        | 76.1  | 23.8                           | 0.1              |  |
| 2009-10                   | 22,890                | 8.9                               | 39.5              | 26.6                                     | 6.0                                | 1.2                | 3.9                  | 8.6                            | 0.5                              | 4.7        | 73.6  | 26.2                           | 0.2              |  |
| <b>2010-11</b>            | <b>24,960</b>         | <b>9.2</b>                        | <b>38.1</b>       | <b>27.5</b>                              | <b>5.6</b>                         | <b>1.2</b>         | <b>3.9</b>           | <b>9.2</b>                     | <b>0.5</b>                       | <b>4.7</b> | <b>73.7</b>                                 | <b>26.2</b>                    | <b>0.1</b>       |  |
| <b>Postgraduate</b>       |                       |                                   |                   |  |                                    |                    |                      |                                |                                  |            |   |                                |                  |  |
| 2003-04                   | 6,060                 | 11.3                              | 63.4              | 18.4                                     | 3.3                                | 0.2                | 0.6                  | 1.7                            | 0.3                              | 0.6        | 92.6  | 7.3                            | 0.1              |  |
| 2004-05                   | 7,715                 | 13.1                              | 62.3              | 19.3                                     | 2.5                                | 0.2                | 0.6                  | 1.2                            | 0.1                              | 0.5        | 94.2  | 5.6                            | 0.2              |  |
| 2005-06                   | 7,790                 | 12.0                              | 69.4              | 14.6                                     | 1.6                                | 0.1                | 0.6                  | 1.0                            | 0.1                              | 0.5        | 95.5  | 4.4                            | 0.1              |  |
| 2006-07                   | 8,390                 | 10.0                              | 70.3              | 15.2                                     | 1.8                                | 0.3                | 0.8                  | 0.8                            | 0.1                              | 0.3        | 95.0  | 4.6                            | 0.4              |  |
| 2007-08                   | 6,675                 | 12.1                              | 65.0              | 17.6                                     | 2.1                                | 0.2                | 0.8                  | 0.8                            | 0.1                              | 0.8        | 94.4  | 5.0                            | 0.6              |  |
| 2008-09                   | 6,815                 | 11.2                              | 64.2              | 18.1                                     | 2.6                                | 0.1                | 0.8                  | 1.6                            | 0.2                              | 1.0        | 93.5  | 6.4                            | 0.1              |  |
| 2009-10                   | 6,240                 | 10.0                              | 63.7              | 17.7                                     | 2.8                                | 0.3                | 1.4                  | 2.2                            | 0.2                              | 1.6        | 90.9  | 8.9                            | 0.2              |  |
| <b>2010-11</b>            | <b>6,930</b>          | <b>12.4</b>                       | <b>56.1</b>       | <b>22.1</b>                              | <b>3.3</b>                         | <b>0.3</b>         | <b>1.2</b>           | <b>2.7</b>                     | <b>0.2</b>                       | <b>1.6</b> | <b>90.1</b>                                 | <b>9.8</b>                     | <b>0.1</b>       |  |
| <b>First Degree</b>       |                       |                                   |                   |  |                                    |                    |                      |                                |                                  |            |   |                                |                  |  |
| 2003-04                   | 15,030                | 9.0                               | 30.6              | 29.9                                     | 10.6                               | 1.1                | 3.4                  | 9.9                            | 0.6                              | 4.6        | 68.0  | 31.7                           | 0.3              |  |
| 2004-05                   | 16,090                | 9.1                               | 30.8              | 33.8                                     | 9.0                                | 0.8                | 3.1                  | 9.4                            | 0.5                              | 3.4        | 72.0  | 27.9                           | 0.1              |  |
| 2005-06                   | 15,700                | 9.7                               | 34.4              | 32.7                                     | 7.5                                | 0.8                | 3.0                  | 7.7                            | 0.4                              | 3.6        | 75.4  | 24.6                           | 0.1              |  |
| 2006-07                   | 15,620                | 8.9                               | 33.9              | 34.0                                     | 7.5                                | 0.7                | 3.1                  | 7.9                            | 0.3                              | 3.5        | 75.5  | 24.3                           | 0.2              |  |
| 2007-08                   | 14,865                | 8.7                               | 32.9              | 32.8                                     | 7.2                                | 0.8                | 3.7                  | 9.0                            | 0.5                              | 4.4        | 73.0  | 26.8                           | 0.2              |  |
| 2008-09                   | 14,225                | 8.5                               | 30.9              | 31.5                                     | 6.7                                | 0.9                | 4.1                  | 11.1                           | 0.5                              | 5.7        | 69.5  | 30.4                           | 0.1              |  |
| 2009-10                   | 14,490                | 8.3                               | 31.9              | 30.1                                     | 7.1                                | 0.9                | 3.9                  | 11.3                           | 0.6                              | 5.7        | 68.8  | 31.0                           | 0.2              |  |
| <b>2010-11</b>            | <b>15,620</b>         | <b>8.0</b>                        | <b>33.0</b>       | <b>29.5</b>                              | <b>6.4</b>                         | <b>0.8</b>         | <b>3.9</b>           | <b>11.8</b>                    | <b>0.6</b>                       | <b>5.9</b> | <b>69.2</b>                                 | <b>30.7</b>                    | <b>0.1</b>       |  |
| <b>Sub-Degree</b>         |                       |                                   |                   |  |                                    |                    |                      |                                |                                  |            |   |                                |                  |  |
| 2003-04                   | 2,215                 | 7.2                               | 6.1               | 58.5                                     | 7.8                                | 3.1                | 6.5                  | 5.9                            | 1.3                              | 3.7        | 69.6  | 30.4                           | 0.0              |  |
| 2004-05                   | 2,135                 | 6.3                               | 6.5               | 57.3                                     | 8.0                                | 4.0                | 6.9                  | 6.3                            | 1.0                              | 3.7        | 67.9  | 32.1                           | 0.0              |  |
| 2005-06                   | 2,105                 | 8.1                               | 6.9               | 54.6                                     | 7.8                                | 3.2                | 7.5                  | 7.0                            | 0.7                              | 4.1        | 67.7  | 32.3                           | 0.0              |  |
| 2006-07                   | 2,330                 | 6.8                               | 10.6              | 51.4                                     | 8.5                                | 3.7                | 6.5                  | 7.6                            | 0.8                              | 4.0        | 66.6  | 33.3                           | 0.0              |  |
| 2007-08                   | 2,465                 | 7.1                               | 18.2              | 46.0                                     | 6.5                                | 3.2                | 8.2                  | 5.7                            | 1.0                              | 4.1        | 68.6  | 31.3                           | 0.0              |  |
| 2008-09                   | 2,165                 | 7.4                               | 17.6              | 41.8                                     | 6.4                                | 4.4                | 9.2                  | 7.7                            | 1.1                              | 4.5        | 64.4  | 35.6                           | 0.0              |  |
| 2009-10                   | 2,155                 | 9.7                               | 20.4              | 28.7                                     | 7.8                                | 5.7                | 11.3                 | 9.1                            | 0.8                              | 6.2        | 56.4  | 43.4                           | 0.2              |  |
| <b>2010-11</b>            | <b>2,410</b>          | <b>7.8</b>                        | <b>20.0</b>       | <b>29.6</b>                              | <b>6.6</b>                         | <b>6.1</b>         | <b>11.7</b>          | <b>11.0</b>                    | <b>0.7</b>                       | <b>6.5</b> | <b>55.2</b>                                 | <b>44.7</b>                    | <b>0.0</b>       |  |

Source: Higher Education Statistics Agency (HESA).

Data has been weighted according to response rates (see methodological statement page 25).

<sup>1</sup> Elias & Purcell classification; Elias, P. and Purcell, K. (2004) SOC (HE) A classification of occupations for studying the graduate labour market. Warwick: Institute for Employment Research.

**Table 7: Students qualifying from Scottish HEIs gaining permanent UK employment by industry of employer and subject of qualification: 2010-11**

|                             | <b>Total No. of Students</b> | Agriculture and Related Industries (%) | Manufacturing and Construction (%) | Retail and Leisure (%) | Transport and Communication (%) | Finance and Business Services (%) | Public Administration (%) | Education (%) | Health, Social and Community Work (%) |
|-----------------------------|------------------------------|--|------------------------------------|------------------------|---------------------------------|-----------------------------------|---------------------------|---------------|---------------------------------------|
| <b>All subjects</b>         | <b>24,960</b>                | <b>0.4</b>                             | <b>9.9</b>                         | <b>16.6</b>            | <b>4.9</b>                      | <b>18.8</b>                       | <b>7.6</b>                | <b>14.4</b>   | <b>27.0</b>                           |
| Medical Studies             | <b>4,905</b>                 | 0.0                                    | 1.5                                | 8.4                    | 0.4                             | 2.0                               | 2.8                       | 3.9           | 80.8                                  |
| Science and Engineering     | <b>6,290</b>                 | 1.3                                    | 21.0                               | 18.6                   | 8.7                             | 23.8                              | 6.9                       | 7.4           | 12.0                                  |
| Business and Social Studies | <b>7,840</b>                 | 0.3                                    | 11.8                               | 19.7                   | 5.2                             | 31.2                              | 11.5                      | 5.0           | 14.9                                  |
| Education and the Arts      | <b>5,715</b>                 | 0.1                                    | 2.4                                | 17.1                   | 3.9                             | 10.9                              | 6.6                       | 44.3          | 14.5                                  |

Source: Higher Education Statistics Agency (HESA).

Data has been weighted according to response rates (see methodological statement page 25).

"Total No. of Students" has been rounded to the nearest 5.

Standard Industrial Classification, SIC2007 was used to categorise industry of employer. More information concerning the Standard Industrial Classification can be found at the following web address: <http://www.ons.gov.uk/ons/guide-method/classifications/current-standard-classifications/standard-industrial-classification/index.html>

**Table 8a): Students qualifying from Scottish HEIs gaining permanent UK or overseas employment by pre-study domicile, location of employment and academic year: 2003-04 to 2010-11**

| Pre-study Domicile   | Location of Permanent Employment |              |             |              |
|----------------------|----------------------------------|--------------|-------------|--------------|
|                      | Total No. of Students            | Scotland (%) | Other UK(%) | Overseas (%) |
| <b>All locations</b> |                                  |              |             |              |
| 2003-04              | 24,965                           | 80.0         | 13.3        | 6.7          |
| 2004-05              | 27,795                           | 80.8         | 12.5        | 6.7          |
| 2005-06              | 27,580                           | 81.4         | 11.4        | 7.2          |
| 2006-07              | 28,430                           | 81.0         | 11.6        | 7.4          |
| 2007-08              | 25,765                           | 80.7         | 12.4        | 6.8          |
| 2008-09              | 24,785                           | 80.5         | 13.1        | 6.4          |
| 2009-10              | 24,730                           | 78.6         | 14.0        | 7.4          |
| <b>2010-11</b>       | <b>27,195</b>                    | <b>75.7</b>  | <b>16.0</b> | <b>8.2</b>   |
| <b>Scotland</b>      |                                  |              |             |              |
| 2003-04              | 20,165                           | 91.9         | 6.0         | 2.2          |
| 2004-05              | 22,510                           | 92.5         | 5.4         | 2.1          |
| 2005-06              | 22,295                           | 92.5         | 5.1         | 2.4          |
| 2006-07              | 22,975                           | 92.5         | 5.0         | 2.5          |
| 2007-08              | 20,755                           | 92.0         | 5.5         | 2.6          |
| 2008-09              | 19,765                           | 92.5         | 5.2         | 2.3          |
| 2009-10              | 19,625                           | 90.3         | 7.0         | 2.7          |
| <b>2010-11</b>       | <b>21,275</b>                    | <b>88.6</b>  | <b>8.1</b>  | <b>3.3</b>   |
| <b>Other UK</b>      |                                  |              |             |              |
| 2003-04              | 3,295                            | 33.2         | 58.0        | 9.0          |
| 2004-05              | 3,530                            | 34.3         | 57.2        | 8.4          |
| 2005-06              | 3,370                            | 38.4         | 52.8        | 8.8          |
| 2006-07              | 3,365                            | 36.3         | 55.7        | 8.0          |
| 2007-08              | 3,240                            | 36.4         | 56.0        | 7.6          |
| 2008-09              | 3,305                            | 34.0         | 59.2        | 6.8          |
| 2009-10              | 3,100                            | 34.0         | 56.9        | 9.0          |
| <b>2010-11</b>       | <b>3,495</b>                     | <b>29.6</b>  | <b>62.3</b> | <b>7.9</b>   |
| <b>Other EU</b>      |                                  |              |             |              |
| 2003-04              | 1,450                            | 23.8         | 12.8        | 63.4         |
| 2004-05              | 1,750                            | 24.6         | 13.4        | 62.0         |
| 2005-06              | 1,900                            | 27.4         | 11.8        | 60.8         |
| 2006-07              | 2,075                            | 27.2         | 13.0        | 59.8         |
| 2007-08              | 1,760                            | 29.5         | 14.8        | 56.0         |
| 2008-09              | 1,695                            | 31.6         | 15.6        | 53.1         |
| 2009-10              | 1,980                            | 32.6         | 15.9        | 51.5         |
| <b>2010-11</b>       | <b>2,405</b>                     | <b>29.2</b>  | <b>18.5</b> | <b>52.2</b>  |

Source: Higher Education Statistics Agency (HESA).

Data has been weighted according to response rates (see methodological statement page 25).

"Total No. of Students" has been rounded to the nearest 5.

**Table 8b): Scottish domiciled students qualifying from Rest of UK HEIs gaining permanent UK or overseas employment by location and academic year: 2003-04 to 2010-11**

| Year           | Location of Permanent Employment |              |             |              |
|----------------|----------------------------------|--------------|-------------|--------------|
|                | Total No.of Students             | Scotland (%) | Other UK(%) | Overseas (%) |
| 2003-04        | <b>2,070</b>                     | 42.8         | 50.7        | 6.5          |
| 2004-05        | <b>1,955</b>                     | 41.2         | 51.9        | 6.9          |
| 2005-06        | <b>2,010</b>                     | 40.3         | 53.2        | 6.5          |
| 2006-07        | <b>1,765</b>                     | 40.8         | 53.0        | 6.2          |
| 2007-08        | <b>1,875</b>                     | 43.2         | 51.5        | 5.3          |
| 2008-09        | <b>1,845</b>                     | 47.7         | 45.3        | 7.0          |
| 2009-10        | <b>1,980</b>                     | 48.7         | 44.4        | 6.8          |
| <b>2010-11</b> | <b>1,990</b>                     | 43.6         | 48.2        | 7.8          |

Source: Higher Education Statistics Agency (HESA).

Data has been weighted according to response rates (see methodological statement page 25).

"Total No. of Students" has been rounded to the nearest 25.

**Table 9: Students qualifying from Scottish HEIs gaining permanent UK or overseas employment by subject studied and location of employment: 2010-11**

|  | Location of Permanent Employment |              |              |              |
|--|----------------------------------|--------------|--------------|--------------|
|  | Total No. of Students            | Scotland (%) | Other UK (%) | Overseas (%) |
| <b>All subjects</b>                                      | <b>27,195</b>                    | <b>75.7</b>  | <b>16.0</b>  | <b>8.2</b>   |
| <b>Medical Studies</b>                                   | <b>5,055</b>                     | <b>77.1</b>  | <b>19.8</b>  | <b>3.0</b>   |
| Allied Medicine  | 4,010                            | 76.6         | 19.8         | 3.6          |
| Medicine and Dentistry                                   | 1,045                            | 79.2         | 20.0         | 0.7          |
| <b>Science and Engineering</b>                           | <b>7,035</b>                     | <b>69.1</b>  | <b>20.3</b>  | <b>10.6</b>  |
| Agriculture  | 200                              | 64.2         | 16.9         | 19.4         |
| Biological Sciences                                      | 1,890                            | 78.2         | 13.3         | 8.4          |
| Engineering and Technology                               | 2,255                            | 70.1         | 19.4         | 10.4         |
| Information Technology                                   | 1,115                            | 74.5         | 14.2         | 11.3         |
| Mathematical Sciences                                    | 360                              | 62.1         | 29.5         | 8.6          |
| Physical Sciences  | 1,070                            | 54.0         | 31.9         | 14.0         |
| Veterinary Science                                       | 150                              | 28.9         | 65.8         | 5.4          |
| <b>Business and Social Studies</b>                       | <b>8,700</b>                     | <b>77.1</b>  | <b>12.9</b>  | <b>9.9</b>   |
| Architecture   | 975                              | 70.0         | 17.3         | 12.8         |
| Business Administration                                  | 3,975                            | 77.7         | 12.0         | 10.3         |
| Law  | 1,065                            | 81.8         | 8.3          | 10.1         |
| Mass Communication                                       | 460                              | 75.0         | 17.0         | 8.0          |
| Social Studies   | 2,225                            | 77.3         | 14.2         | 8.3          |
| <b>Education and the Arts</b>                            | <b>6,190</b>                     | <b>79.9</b>  | <b>12.4</b>  | <b>7.6</b>   |
| Creative Arts  | 1,430                            | 78.6         | 14.3         | 6.9          |
| Education  | 2,940                            | 95.5         | 2.9          | 1.6          |
| Humanities   | 805                              | 58.9         | 31.9         | 9.0          |
| Languages  | 1,015                            | 53.1         | 21.8         | 25.0         |
| <b>Multi-Disciplinary Studies</b>                        | <b>220</b>                       | <b>87.6</b>  | <b>9.6</b>   | <b>2.3</b>   |
|  |                                  |              |              |              |
| <b>Supplementary Subjects not contained in the above</b> |                                  |              |              |              |
| Economics and Politics                                   | 585                              | 54.2         | 26.0         | 19.7         |
| English  | 415                              | 65.6         | 19.7         | 14.4         |
| Geography  | 280                              | 58.9         | 33.0         | 8.5          |
| Psychology   | 785                              | 80.5         | 12.4         | 7.1          |

Source: Higher Education Statistics Agency (HESA).

Data has been weighted according to response rates (see methodological statement page 25).

"Total No. of Students" has been rounded to the nearest 5.

**Table 10: Response rates to Destinations of Leavers from Higher Education (DLHE) survey for students qualifying from Scottish HEIs: 2003-04 to 2010-11**

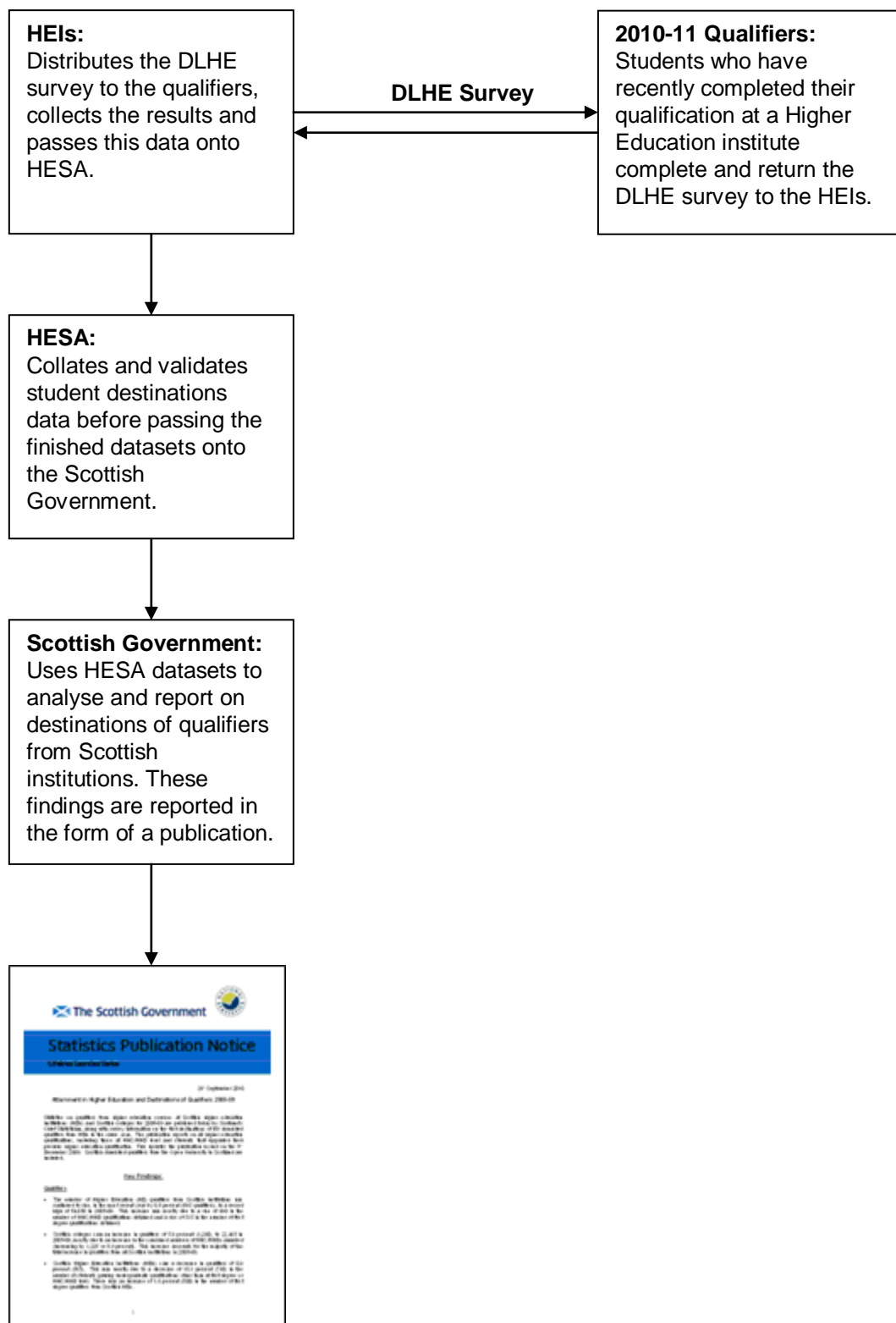
|                | Response rate (%)  |              |              |             |
|----------------|--------------------|--------------|--------------|-------------|
|                | All Qualifications | Postgraduate | First Degree | Sub-Degree  |
| 2003-04        | <b>74.4</b>        | 66.4         | 77.6         | 72.0        |
| 2004-05        | <b>72.8</b>        | 67.0         | 75.6         | 70.2        |
| 2005-06        | <b>73.9</b>        | 69.9         | 76.1         | 70.7        |
| 2006-07        | <b>72.5</b>        | 69.0         | 75.0         | 66.8        |
| 2007-08        | <b>73.5</b>        | 69.4         | 76.5         | 65.7        |
| 2008-09        | <b>73.0</b>        | 67.1         | 75.4         | 72.4        |
| 2009-10        | <b>73.3</b>        | 67.6         | 75.9         | 71.3        |
| <b>2010-11</b> | <b>72.9</b>        | <b>67.8</b>  | <b>75.6</b>  | <b>69.1</b> |

Source: Higher Education Statistics Agency

# Methodological Note

## Data Sources

This publication contains information on the first destination of students from Higher Education Institutes (HEIs) in Scotland who gained higher education qualifications in academic year 2010-11. These statistics are collected by the Higher Education Statistics Agency (HESA) through the Destinations of Leavers from Higher Education survey.





## **Data Quality**

Information provided here on the destination of students who have qualified from higher education is collected in the survey of Destinations of Leavers from Higher Education (DLHE). This is co-ordinated by the Higher Education Statistics Agency (HESA) and administered by each HEI. The survey is handed out to all qualifiers from full-time and part-time higher education courses at HEIs whose pre-study domicile was within the EU. Non-EU students are not surveyed due to difficulties in maintaining contact details and the subsequent low response rate observed. The current response rate for those in the survey is 72.9%

The DLHE survey is optional for qualifiers, and therefore not all will opt to complete the survey. The data that has been successfully collected has been used to estimate the most likely responses of those who opted not to complete the survey. The response rates for different categories of student were analysed to determine the extent of non-response for each group. We have found, for example, that students who have obtained a good class of first degree (first or upper second) are more likely to respond to the survey than those who obtained a poorer class of degree. High performing students had therefore been over-represented in the respondents population.

Different demographics therefore had their survey results altered to be more representative of the standard student population eligible to complete the survey. The adjustments were made separately based on pre-study location (domicile), region of institution, level of qualification studied for and class of first degree. The adjustment factors ranged from 1.2 to 2.0. Where adjustments have been made, it is noted under the relevant table of results.

Further information on the quality the data used in this publication can be found on the Lifelong Learning Statistics website at:

<http://www.scotland.gov.uk/Topics/Statistics/Browse/Lifelong-learning/LLStatsQuality>

## **Open University**

Students attending the Open University whose pre study domicile was in Scotland are included in this publication as studying at a Scottish HEI. This methodology differs from that used by HESA where Open University is counted as a wholly English institution. As a result figures reported in this release will differ from those reported by HESA.

## **International Students**

European Union (EU) figures include accession countries according to EU membership at the start of each academic year. In 2010-11 EU member countries included; Austria, Belgium, Bulgaria, Cyprus, Czech Republic, Denmark, Estonia, Finland, France, Germany, Gibraltar, Greece, Hungary, the Republic of Ireland, Italy, Latvia, Lithuania, Luxembourg, Malta, Netherlands, Poland, Portugal, Romania,

Slovakia, Slovenia, Spain and Sweden. In this release the United Kingdom is reported separately from other EU countries.

### **Level of Study**

Postgraduate level qualifications include; doctorate, masters, postgraduate bachelors degrees, postgraduate diplomas or certificates, PGCE/PGDE and professional qualification at postgraduate level. From 2007-08 professional graduate certificates in education were reported as undergraduate qualifications and separately from postgraduate certificates in education, in years prior to this both are reported as postgraduate certificates in education.

First Degree qualifications include; first degrees, first degrees with qualified teacher status, enhanced first degrees, first degrees obtained concurrently with a diploma and intercalated first degrees.

Other Undergraduate qualifications include; Diploma of Higher Education (DipHE), Certificate of Higher Education (CertHE), professional qualification at undergraduate level, foundation courses at HE level, HND, HNC, NVQ/SVQ levels 5 and 4, diplomas and certificates at undergraduate level and other formal HE qualifications of less than degree standard. Other HE includes all undergraduate level study excluding first degree and HNCs/HNDs.

### **Subject Tables**

Subject data from higher education institutions is apportioned to broadly reflect the weight of a particular subject within the study programmes of individual enrolments. This process is consistent with the treatment of subject breakdowns by the Higher Education Statistics Agency (HESA). Supplementary subject figures are included in the main subject groupings. They are also reported separately for clarity. Economics and politics are included in social studies, English is included in languages, geography is included in social studies and psychology is included in biological sciences.

### **Data Presentation**

In all tables in this release student numbers have been rounded to the nearest 5 and percentages to one decimal place. Within tables, missing values have been replaced with “-“. Unknown values are not displayed individually in tables but are included in totals. Figures may not sum to totals due to rounding and the inclusion of unknown values. Unless stated otherwise, percentages in tables are calculated from unrounded values. Percentages in the text and charts are calculated from rounded values.

## Notes to Tables

1. Domicile: country of the student's permanent or home address prior to entry to the course.
2. 'Believed unemployed' includes; qualifiers from HEIs that are looking for employment, further study or training or are due to start a job in the next month.
3. 'Other' destinations include; those who are unable to work, looking after the home or family, taking time out in order to travel, or are not otherwise included under an alternative heading.

## Notes to News Editors

1. The figures in this publication are based on data collected by the Higher Education Statistics Agency (HESA) from higher education institutions (HEIs). Figures provided in the commentary have been derived from rounded values shown in the tables. Within tables, missing values have been replaced with "-".
2. This publication contains information on students from HEIs who successfully completed a higher education course in Scotland in the years covered. Higher education courses are defined as non school qualifications at Level 7 or above of the Scottish Credit and Qualifications Framework (SCQF). Information on first destinations covers the activities of full-time and part-time students from Scottish HEIs, the rest of the UK and the rest of the EU.
3. First destination information is collected by HEIs through a voluntary survey to students of all nationalities within the European Union who have successfully completed their course. Details are requested about the qualifier's destination on 18<sup>th</sup> April 2011 or 9<sup>th</sup> January 2012, for autumn and summer qualifiers respectively, by HEIs on behalf of the Higher Education Statistics Agency (HESA).
4. Weightings have been applied to qualifier destinations data (Tables 1 to 9, with the exception of Table 4) to more accurately reflect the destinations of all qualifiers from Scottish institutions rather than those who responded to the surveys. Un-weighted figures will be made available on the internet at <http://www.scotland.gov.uk/!statistics>. For further details please refer to page 25, within the methodological note.
5. Response rates for 2003-04 to 2010-11 have been calculated as the percentage of all qualifiers in the target population who were sent a questionnaire and replied stating a known destination. Non-respondents and unknown responses have been excluded from tables 1-10. The overall response rate to the Destination of Leavers from Higher Education survey has stayed relatively constant between 72 per cent and 75 per cent in each year since 2003-04. The response rates for this survey are given in Table 10 for each year since 2003-04.

6. This is a National Statistics publication. National Statistics are produced to high professional standards set out in the National Statistics Code of Practice. They undergo regular quality assurance reviews to ensure that they meet customer needs. They are produced free from any political interference.

## Contact Details

This publication, together with associated tables listed above, is published on the Scottish Government website:

<http://www.scotland.gov.uk/llstatistics>

If you do not have access to the internet, please contact us using the details provided on the final page of the publication.

---

For media enquiries please contact:

**Stuart Lewis**

Senior Communications Officer

Scottish Government

Communications

**Tel:** (0131) 244 2530

---

## A NATIONAL STATISTICS PUBLICATION FOR SCOTLAND

The United Kingdom Statistics Authority has designated these statistics as National Statistics, in accordance with the Statistics and Registration Service Act 2007 and signifying compliance with the Code of Practice for Official Statistics.

Designation can be broadly interpreted to mean that the statistics:

- meet identified user needs;
- are well explained and readily accessible;
- are produced according to sound methods, and
- are managed impartially and objectively in the public interest.

Once statistics have been designated as National Statistics it is a statutory requirement that the Code of Practice shall continue to be observed.

Further information about Official and National Statistics can be found on the UK Statistics Authority website at [www.statisticsauthority.gov.uk](http://www.statisticsauthority.gov.uk)

## SCOTTISH GOVERNMENT STATISTICIAN GROUP

### Our Aim

To provide relevant and reliable information, analysis and advice that meet the needs of government, business and the people of Scotland.

For more information on the Statistician Group, please see the Scottish Government website at [www.scotland.gov.uk/statistics](http://www.scotland.gov.uk/statistics)

### Correspondence and enquiries

Enquiries on this publication should be addressed to:

Ryan Scott  
Post-16 Education Statistics  
Employability, Skills and Lifelong Learning Analysis  
5<sup>th</sup> Floor, Atlantic Quay  
150 Broomielaw  
GLASGOW, G2 8LU  
Telephone: 03002446774;  
e-mail: [FHEstatistics@scotland.gsi.gov.uk](mailto:FHEstatistics@scotland.gsi.gov.uk)

General enquiries on Scottish Government statistics can be addressed to:

Office of the Chief Statistician  
Scottish Government  
4N.06, St Andrews House  
EDINBURGH EH1 3DG  
Telephone: (0131) 244 0442  
e-mail: [statistics.enquiries@scotland.gsi.gov.uk](mailto:statistics.enquiries@scotland.gsi.gov.uk)

Further contact details, e-mail addresses and details of previous and forthcoming publications can be found on the Scottish Government Website at [www.scotland.gov.uk/statistics](http://www.scotland.gov.uk/statistics)

### Complaints and suggestions

If you are not satisfied with our service, please write to the Chief Statistician, 4N.06, St Andrews House, Edinburgh, EH1 3DG, Telephone: (0131) 244 0302, e-mail [statistics.enquiries@scotland.gsi.gov.uk](mailto:statistics.enquiries@scotland.gsi.gov.uk). We also welcome any comments or suggestions that would help us to improve our standards of service.

### ScotStat

If you would like to be consulted about new or existing statistical collections or receive notification of forthcoming statistical publications, please register your interest on the Scottish Government ScotStat website at [www.scotland.gov.uk/scotstat](http://www.scotland.gov.uk/scotstat)

### Crown Copyright

Brief extracts from the Crown Copyright material in this publication may be reproduced provided the source is fully acknowledged.

ISBN: 978-1-78256-083-8

3BE 9dgb EUaf'S V  
6BB3E#%00) ( /' +!#\$fi