



## Document de treball de l'IEB 2015/35

THE DISTRIBUTION OF SKILLS AMONG THE EUROPEAN ADULT POPULATION AND  
UNEMPLOYMENT: A COMPARATIVE APPROACH

**Jorge Calero, Álvaro Choi**

**Human Capital**

Document de  
treball de l'IEB

**THE DISTRIBUTION OF SKILLS AMONG THE EUROPEAN  
ADULT POPULATION AND UNEMPLOYMENT:  
A COMPARATIVE APPROACH**

Jorge Calero, Álvaro Choi

The **IEB** research group in **Human Capital** aims at promoting research in the Economics of Education. The main objective of this group is to foster research related to the education and training of individuals and to promote the analysis of education systems and policies from an economic perspective. Some topics are particularly relevant: Evaluation of education and training policies; monetary and non-monetary effects of education; analysis of the international assessments of the skills of the young (PISA, PIRLS, TIMMS) and adult populations (PIAAC, IALS); education and equality, considering the inclusion of the disabled in the education system; and lifelong learning. This group puts special emphasis on applied research and on work that sheds light on policy-design issues. Moreover, research focused in Spain is given special consideration. Disseminating research findings to a broader audience is also an aim of the group. This research group enjoys the support from the **IEB-Foundation**.

The **Barcelona Institute of Economics (IEB)** is a research centre at the University of Barcelona (UB) which specializes in the field of applied economics. The **IEB** is a foundation funded by the following institutions: Applus, Abertis, Ajuntament de Barcelona, Diputació de Barcelona, Gas Natural, La Caixa and Universitat de Barcelona.

Postal Address:  
Institut d'Economia de Barcelona  
Facultat d'Economia i Empresa  
Universitat de Barcelona  
C/ John M. Keynes, 1-11  
(08034) Barcelona, Spain  
Tel.: + 34 93 403 46 46  
[ieb@ub.edu](mailto:ieb@ub.edu)  
<http://www.ieb.ub.edu>

The IEB working papers represent ongoing research that is circulated to encourage discussion and has not undergone a peer review process. Any opinions expressed here are those of the author(s) and not those of IEB.

**THE DISTRIBUTION OF SKILLS AMONG THE EUROPEAN  
ADULT POPULATION AND UNEMPLOYMENT:  
A COMPARATIVE APPROACH \***

Jorge Calero, Álvaro Choi

**ABSTRACT:** The most painful effect of the Great Recession in European countries has been the surge in unemployment rates during a period that has been characterised most notably by an increase in income inequality and the heterogeneous pattern of this inequality by educational level. Thus, workers with low levels of educational attainment were among the first to lose their jobs. This paper addresses two main research questions: first, it estimates the importance of the level of skills and education on the probability of being unemployed; and, second, it provides evidence of the impact of inequalities in the previous socioeconomic and cultural background of individuals on the probability of being unemployed. These two objectives are assessed using data for 24 jurisdictions participating in the first round of the OECD's Programme for the International Assessment of Adult Competencies (PIAAC). Skill levels play a central role in explaining unemployment in Europe and act as an indirect channel via which a family's sociocultural background has an impact on its labour market status.

JEL Codes: J24, J62, I24

Keywords: Human capital, labour market, PIAAC

Jorge Calero  
Universidad de Barcelona & IEB  
Av. Diagonal, 690, Torre 6, planta 2  
08034 Barcelona, Spain  
E-mail: [jorge.calero@ub.edu](mailto:jorge.calero@ub.edu)

Álvaro Choi  
Universidad de Barcelona & IEB  
Av. Diagonal, 690, Torre 6, planta 2  
08034 Barcelona, Spain  
E-mail: [alvarochoi@ub.edu](mailto:alvarochoi@ub.edu)

---

\* This research has received financial support from the EDU2013-42480-R R+D+I project of the Spanish Ministry of Economy and Competitiveness.

# The distribution of skills among the European adult population and unemployment: a comparative approach

## 1. Introduction

The most painful effect of the Great Recession in European countries has been the surge in unemployment rates, which have had obvious macro and microeconomic implications in terms of both economic efficiency and equality. The intensity of these effects have varied depending on such factors as welfare state coverage (Gottschalk and Smeeding, 1997), the strength of unions (Donado and Wälde, 2012) and the size of the informal labour market (Bosch and Esteban-Pretel, 2012). Although the general European panorama has deteriorated since 2008, with a slight improvement since 2012, Figure 1 shows considerable heterogeneity across European countries.

<INSERT FIGURE 1 AROUND HERE>

Two notable features of the economic crisis in Europe have been the increase in income inequality<sup>1</sup> (OECD, 2011; De Beer, 2012) and the heterogeneous pattern of this inequality by educational level (Gesthuizen et al., 2011)<sup>2</sup>. Thus, workers with low levels of educational attainment were among the first to lose their jobs. This phenomenon has been especially intense in countries such as Spain, where a large part of the labour force was employed in low value-added activities associated with the real estate or tourism sectors. Indeed, these economic sectors provided a means of escape from

---

<sup>1</sup> However, Agnello and Sousa (2012) and Reich (2010) find that income inequality tends to increase *before* financial crises.

<sup>2</sup> Gebel and Giesecke (2011) analysed a set of 15 European countries for the 1992-2007 period and found no evidence of an increase in the skills-related unemployment gap.

unemployment to low-skilled workers in (notably Southern) European countries with a qualification structure below that of the EU average. For instance, in 2012, only 55.2% of Spain's active population had successfully completed post-compulsory studies compared to an average figure across the EU of 74.2%.

The positive relationship between education and labour market outcomes, including such characteristics as occupation and salary, has been comprehensively verified (Psacharopoulos and Patrinos, 2004). Two main lines of argument have been developed in explanation of this relationship: on the one hand, human capital theory (Becker, 1962) links better labour market outcomes to the greater productivity of more educated workers, a characteristic enhanced through formal education; on the other, various authors highlight the role played by education in signalling the most productive workers (Spence, 1973). Both theories probably go some way to explaining the higher unemployment rates among low-educated Europeans and, consequently, disentangling the extent of both effects (i.e., enhanced skills and signalling functions of education) is an essential exercise for the design of effective educational policies aimed at increasing the possibilities of finding work in a high unemployment environment. This paper explores the existence of heterogeneous employment situations across the countries of Europe and seeks to provide evidence of the respective impacts of the two effects discussed.

If skill levels have an impact on labour market status, then we face a clear question of equity, as inequalities in the distribution of skills will result in inequalities in labour market opportunities. Indeed, the acquisition of skills by the adult population – and, subsequently, the probability of being unemployed – depends, among other factors, on the level of human capital of the previous generation (Jäntti and Jenkins, 2015).

The contribution of this paper, therefore, is twofold, as it addresses two main research questions: first, it estimates the importance of the level of skills and education on the probability of being unemployed; and, second, it provides evidence of the impact of

inequalities in the previous socioeconomic and cultural background of individuals on the probability of being unemployed. These two objectives are assessed using data for 24 jurisdictions participating in the first round of the OECD's *Programme for the International Assessment of Adult Competencies* (PIAAC) which provides rich information on the individual and labour characteristics of 16- to 65-year-old adults. The PIAAC is a particularly useful tool for our analysis, as it includes the participants' results in assessments that measure their levels of numeracy, literacy and problem-solving, which can be understood as proxy variables for potential productivity and that allow us to control for the signalling effect of education.

The rest of the article is structured as follows: first, we provide a brief overview of its theoretical framework and then we describe the data and methodology employed. Next we present and discuss the results; and, finally, we summarize the study's main conclusions.

## **2. Education, skills and labour market outcomes**

The close relationship established between education and economic growth has been analysed from both macro and micro perspectives. Macro analyses, such as Barro (1996) and Krueger and Lindahl (2001), stress the positive relationship between a country's level of human capital and its level of economic growth. From a microeconomic perspective, it is well documented that better educated workers enjoy monetary (Mincer, 1958) and non-monetary (Ricci and Zachariadis, 2013; Dickson & Harmon, 2011) benefits. Those who successfully complete higher levels of education have less probability of being excluded from the labour market and usually enjoy improved working conditions (Strauss and Leuze, 2013). Moreover, highly educated workers tend to be more productive, an outcome for which the two main theories presented above (i.e., human capital and signalling) offer different explanations, although they should perhaps not be seen as being exclusive. Yet, evidence for the

predominance of one explanation or the other is scarce and inconclusive (Clark and Martorell, 2014). Indeed, achieving a better understanding of the respective explanatory powers of these two theories is clearly a relevant exercise for policy makers that seek to design effective educational and training policies to help boost occupation. This acquires particular relevance in an environment marked by economic crisis.

The effectiveness of educational policies has to face several limitations: first, human capital must be applied to a stock of physical capital that may or may not be available in the country; second, their impact operates in the long run; third, they are dependent on the interaction of a set of other labour supply factors (including demographic shifts and migration flows) with labour demand factors (sectorial structure, technological changes or changes in openness to trade, among others). In any event, education is a key determinant of labour status and this has become especially evident in Europe during the Great Recession.

During the 2008-2012 period, unemployment rates grew in all the EU-28 countries, without exception. The situation was especially acute among Southern Europe countries and low-skilled workers, whose unemployment rates increased at a faster pace than average. As a consequence, the unemployment gap by educational levels has widened since 2008 (Figure 2).

<INSERT FIGURE 2 AROUND HERE>

Adults with higher education endowments present higher levels in key competencies, making them more flexible to labour market changes (OECD, 2013a). Interestingly, a first approach to the PIAAC data also seems to show a negative relationship between skills and a country's level of unemployment (Figure 3).

<INSERT FIGURE 3 AROUND HERE>

Figure 3 highlights considerable differences in unemployment rates across Europe, ranging from 3.3% in Norway to 25.2% in Spain, and in mean literacy skills. While countries such as Japan, Holland, Finland and Norway have low unemployment rates and high competency levels, countries such as Spain, Italy, France, Ireland and Poland present just the opposite situation. This results in the aforementioned negative relationship between skills and a country's level of unemployment. However, this relationship needs to be interpreted with caution, given the possible existence of reverse causation between unemployment and competency levels; i.e., lower unemployment rates may increase the level of competencies, as skills can be acquired in the workplace.

Nevertheless, it seems plausible to hypothesise that one of the main mechanisms via which highly educated adults enjoy better job opportunities is via their higher level of competencies. Increasing workers' skill levels, therefore, becomes a desirable objective in order to reduce unemployment rates. In other words, unemployment rates tend to be lower in countries with higher levels of competencies, as the accumulation of human capital allows the country to increase its productive capacity in the long run. The first objective of this paper, therefore, is to estimate the impact of workers' competencies on labour market opportunities.

However, the acquisition of competencies is a cumulative process and skills can be acquired via different channels, not only via formal education (Behaghel et al, 2014; OECD, 2013b). Among others, individual and family characteristics play a role in this process and, consequently, the distribution of these characteristics has an impact on the final distribution of competencies. The second objective of this paper, therefore, is to provide a better understanding of the relationship between the distribution of key



variables – other than formal education – that have an impact on workers' endowment of competencies and their probability of being unemployed.

### **3. Data and methodology**

The empirical evidence presented in this paper is derived from the OECD's PIAAC-2013 database. One of the main strengths of the programme is its comprehensive treatment of the lifelong acquisition of skills of adults aged between 16 and 64 years old. It provides information on those activities and situations that have an impact on the acquisition of skills (such as formal education), the use of skills and the characteristics of the workplace and lifelong learning activities. Additionally, PIAAC gathers information on the type of skills required for, and used in, the workplace, as well as detailed information on the personal, career and socio-cultural characteristics of all the participants. Finally, PIAAC reports the scores achieved by adults from 26 jurisdictions in relation to three basic skills: literacy, numeracy and problem-solving<sup>3</sup>.

In our analysis we draw on information from 24 jurisdictions<sup>4</sup>. We refer to jurisdictions as opposed to countries because, in the case of Belgium, for example, only the Flemish community took part in the assessment and, in the case of the United Kingdom, PIAAC provides representative samples for England and Northern Ireland. The Canadian sample is also representative of both the English-speaking and the French-speaking provinces.

It should also be mentioned that in some jurisdictions, in order to respect national regulations, some variables are not provided or provided using alternative codes and categories. For example, countries such as Germany, Austria, Canada, Estonia and

---

<sup>3</sup> Some jurisdictions did not report results for the three competencies.

<sup>4</sup> We exclude Cyprus and Australia from the analysis due to restrictions in access to their microdata.

the United States do not provide information on the variable “years passed since the year of immigration to the country”.

Two of the main features of PIAAC data are shared with another of the best known OECD databases, PISA. First, participants’ performance in relation to three competencies is measured using a set of plausible values (5 in the case of PISA; 10 in that of PIAAC). Second, replicate weights are calculated using a similar method. In the case of PIAAC, however, data are not nested and they all belong to the same individual level<sup>5</sup>. In order to take these characteristics into account, we have employed the IDB Analyzer, a statistical tool provided by the OECD, for bivariate analyses, and *piaacreg*, a specific module for the statistical package Stata, which accelerates multivariate analyses – OLS and logistic regressions – with PIAAC.

Given the aims of this study – to estimate the impact of skill levels, education and inequalities in the previous socioeconomic background on the probability of being unemployed – we apply a binomial logistic model to a subsample of individuals with labour experience. In this way, we are able to control for the effect of variables associated with the acquisition of competencies in the workplace and via on-the-job training. The dependent dichotomous variable takes a value of 1 if the individual is unemployed<sup>6</sup>.

The independent variables introduced in our model are the following:

- *Individual characteristics*: age and gender.
- *Family socioeconomic background*:
  - *Immigrant status*: we distinguish between natives, first generation immigrants and second generation immigrants. Additionally, we control for the language spoken by the participants, introducing in the model a

---

<sup>5</sup> A detailed description of the design of PIAAC can be found at OECD (2014).

<sup>6</sup> We checked the robustness of the analysis using a “long-term unemployment” variable too, the main results remaining stable.

variable which takes a value of 1 if the individual's mother tongue is official in that country. It was not possible to incorporate, however, information on the time that had elapsed since the person migrated.

- *Maximum parental level of education*: Maximum level of education completed by his/her parents. This comprises a set of three dummy variables for the following levels: lower secondary education, higher secondary education and higher education.
- *Current family situation*: We introduce two dichotomous variables. The first variable takes a value of 1 if the person is married or lives with his/her partner and, the second, if the individual has children.
- *Labour market participation/ professional profile*: years of working experience and economic sector (primary sector, industry, construction and services).
- *Literacy skills*<sup>7</sup>: as measured by PIAAC-2013, using a 0 to 500 points scale, with a standard deviation of 50. These skills measure the ability to understand, evaluate, use and engage with written text to develop one's knowledge and potential and to participate in society.
- *Educational level*: maximum level of formal education completed by the individual (six categories).

The correspondence between workers' educational level and productivity – closely linked to their level of skills – may vary depending on the extent of the signalling role of education. We therefore have to eliminate the competencies from the signalling function of education. We do so by incorporating a proxy of skills instead of the educational level variable. This latter variable is used in the second part of the analysis. A summary with the main descriptive statistics of the variables can be found in Table 1.

---

<sup>7</sup> Sensitivity analyses were performed using numeracy skills, the main results, which are available upon request, remaining unaltered.

<INSERT TABLE 1 AROUND HERE>

We therefore estimate the following model,

$$(1) \quad U_{ij} = \beta_0 + \beta_1 \cdot X_{ij} + \beta_2 \cdot Y_{ij} + \beta_3 \cdot Z_{ij} + \beta_4 \cdot L_{ij} + \beta_5 \cdot S_{ij} + \varepsilon_{ij}$$

where  $U_{ij}$  is the outcome of interest – unemployment status – for individual  $i$  in jurisdiction  $j$ ;  $X_{ij}$  is a set of individual characteristics;  $Y_{ij}$  and  $Z_{ij}$  are family background and current family characteristic covariates, respectively;  $L_{ij}$  is the professional profile of the individual;  $S_{ij}$ , the literacy skills of the adult; and  $\varepsilon_{ij}$  is an error term.

#### **4. Analysis of the determinants of the probability of unemployment**

This section presents the results of the analyses identifying the determinants of being unemployed in 19 European and 5 non-European jurisdictions. We focus specifically on the effects of skills and family background in addressing our main research questions.

Results from the logistic regressions are presented in Table 2. All results are discussed introducing the *ceteris paribus* clause; that is, assuming all other variables remain constant. The first result of interest – albeit variable in intensity – is the negative association between literacy skills and the probability of being unemployed in most jurisdictions. Austria, Northern Ireland and Russia, and Korea and Japan are, respectively, the European and non-European exceptions to this pattern. In this sense, it is worth mentioning that Austria, Japan and Korea are among the OECD's economies with the lowest rates of unemployment. In these countries, the chances of being included in the small group of unemployed adults seem to be less closely related to the level of skills than in all the other jurisdictions.

<INSERT TABLE 2 AROUND HERE>

The two individual variables introduced in the analysis are age and gender. The relationship between age and risk of unemployment seems to be unequivocal: older adults face a higher risk of unemployment in all jurisdictions except Austria. The effect of gender is less homogeneous. With all other variables remaining constant, the risk of unemployment is only higher for women in Italy and Slovakia; in 13 jurisdictions, there are no significant differences by gender; and, in the remaining nine, men face a higher risk of unemployment. This heterogeneity of situations is explained by differences in the economic cycle in each jurisdiction (for example, in 2012, Southern European countries were, on average, in a worse economic situation than their Northern counterparts); the previous level of integration of women in the active population; cultural patterns typifying labour market entry and exit during periods of economic turmoil; and the distribution of workers by gender in those industries most affected by the economic crisis in each jurisdiction.

If we examine the family background variables, the country of origin of the adult does not seem to be a relevant determinant of unemployment in 14 of the 24 jurisdictions. There are, however, signs of labour market discrimination of first-generation immigrants in Austria, Denmark, Holland and Ireland, of second-generation immigrants in the Czech Republic, France, Slovakia and Spain, and of both first and second-generation immigrants in Estonia and Belgium (Flanders). It is also worth mentioning that adults whose parents had completed higher education faced a lower risk of being unemployed in eight jurisdictions.

In order to obtain a clearer picture of the impact of previous inequalities, we recalculated the same model presented in Table 2, but we substituted the parental education dummies for a continuous variable that measures parental education in years. The coefficients linked to this new variable are shown in Figure 4. These coefficients are statistically non-significant for 14 jurisdictions which include, among

others, three of the four Nordic countries, three Central European countries; two Benelux states and the two East Asian countries in the sample.

<INSERT FIGURE 4 AROUND HERE>

Being married or living as a couple is linked to a lower risk of unemployment in all the jurisdictions except Russia. The consistency of this result should, however, be interpreted with caution due to the possibility of endogeneity. The situation is less clear when we examine the effect of having children. In cases such as Denmark, France or Flanders, those with children have a lower risk of unemployment. In contrast, having children in countries such as Ireland, Italy, Russia and Poland raises the chances of being unemployed.

A consistent pattern is also identified when we observe the results related to labour market experience. Coefficients are negative and statistically significant for all the jurisdictions. This result shows labour market experience cushions the impact of age on unemployment.

We conclude this review of the determinants of unemployment by analysing a labour market demand factor, that of the economic sector. Interestingly, working in the construction sector implies a higher risk of unemployment in 12 jurisdictions. As expected, they include such countries as Ireland and Spain, which have experienced dramatic falls in the economic activity of this sector. The opposite situation is observed in Japan, while the coefficients for the 11 remaining jurisdictions are statistically non-significant. Workers in the primary sector in Flanders, Slovakia, Estonia, Russia and French-speaking Canada have a higher risk of unemployment than those in the services sector, while the opposite is the case for the Irish and Czechs.

Finally, industrial workers in Germany and the Czech Republic are less likely to be unemployed than workers in their respective services sector. This, however, is not the

case for countries where the economic crisis has had a marked impact on industrial production, including Austria, Belgium, Slovakia, France, Sweden and the United States.

We now turn to compare the effect of two alternative human capital proxies on the risk of unemployment: first, literacy skills, the variable employed throughout the analysis; and, the maximum formal educational attainment of the adult, a commonly accepted measure of human capital that may, however, be polluted by the signalling function of educational certificates. We therefore modified the model presented in the methodology section, the literacy skills variable being substituted by the formal educational attainment of the person, measured in years. We then re-estimated the model for the 24 jurisdictions. Unsurprisingly, the results obtained in both estimations were similar to those presented in Table 2 and are available upon request. However, we were particularly interested in establishing the differences that emerge when using these two alternative variables.

Figure 5 shows the close link between the two variables, with the coefficients of literacy and the years of education for the 24 jurisdictions being represented on the X and Y-axes, respectively. As can be seen, there is a close association between both variables ( $R^2=0.423$ ). Figure 5 can be interpreted as follows: the farther we move from the point of origin, the greater the importance of human capital in determining the risk of unemployment. For the four countries lying in the shaded area (Korea, Japan, Austria and Russia) both variables – reading skills and number of years of education – are statistically non-significant. In contrast, human capital plays a central role in determining unemployment status in countries such as Denmark, Germany, Sweden and, outside Europe, the United States.

<INSERT FIGURE 5 AROUND HERE>

Finally, one of the objectives of this article was to disentangle the extent of the effects of human capital and signalling theories of education. Figure 5 is particularly useful for this purpose. In countries lying above the regression line, the effect of skill levels exceeds the effect of formal education, while the opposite holds for countries below this line. Therefore, the explanatory power of human capital theory seems to be predominant in the case of the former, while the signalling function of education is more relevant for the latter countries. In Figure 5 we see that English-speaking countries lie above the line as do France, Spain and Italy. In all these cases, the level of skills seems to have a stronger effect than educational level on the risk of unemployment. In other words, the signalling function of education seems to be *weaker* in these countries. The opposite situation is found, among others, in Scandinavian and former Socialist countries. The identification of these patterns opens the door to future national-level case studies that might provide researchers with a better understanding of this issue.

## **5. Conclusions**

Unemployment rates increased throughout Europe during the Great Recession, these increases being heterogeneous across countries and economic sectors. In turn, unemployment has affected the efficiency of European economies, wasting human capital and depressing aggregate demand, while it has exacerbated inequality and poverty levels. A remarkable characteristic of this crisis is that unemployment has hit those workers with low educational attainment the hardest. Two complementary theories have been suggested for explaining why employers prefer more highly educated workers. On the one hand, human capital theory suggests employers prefer the most productive individuals, education being an important channel through which workers can enhance their productivity. On the other hand, the signalling theory claims that the educational level attained by the individual operates as a signal for identifying



those workers that might have the highest productivity (independent of whether this productivity has been acquired through education). PIAAC-2013 provides a unique chance for analysing the impact of skills – proxy for productivity – on the mechanisms that determine access to the labour market. It also allows us to isolate the effect of skills from the signalling function of education.

An initial cross-sectional analysis of the relationship between skills and unemployment has shown that countries with a higher mean level of skills tend to have lower unemployment rates. Although there is a need to exercise some caution, given the methodological limitations of our approach, this evidence has enabled us to formulate the following hypothesis: there is a long-term cumulative effect of human capital in those countries with higher levels of competencies. This effect may progressively increase their productive capacity. We have subsequently considered the role of education and training policies in raising the level of skills and facilitating the creation of new workplaces. The effectiveness of these policies, however, depends on the existence of a previous stock of physical capital (although, in the long term, one way to attract physical capital to a country might be by accumulating human capital – East Asian countries, such as South Korea, serve as a good example). In the light of these hypotheses, we have sought to provide an answer to the following questions: (1) What importance do skills have for labour market status? and (2) What is the effect of previous economic and sociocultural inequalities on labour market status? We have analysed these issues by applying logistic regression techniques to PIAAC-2013 data for 19 European and 5 non-European jurisdictions.

In response to the first research question, our results point in the same direction as Abrassart (2013) and highlight the fact that skill levels are central to explaining unemployment in all the European countries in our sample except Russia. High levels of literacy (our proxy for productivity) seem to prevent workers losing their employment status in 19 out of 24 jurisdictions. This preventive effect is especially strong in Sweden

and, interestingly, in a high-unemployment country such as Spain. This outcome is especially clear when we estimate an alternative model in which the years of formal education completed by a worker were used instead of literacy skills. Combining the results of the original and alternative models allows us to identify those labour markets that are most sensitive to human capital – most notably, Spain, Sweden, Germany, Denmark and the US. Additionally, we have provided evidence related to a further issue: labour markets in South European and English-speaking countries seem to behave in a similar way to that predicted by human capital theory; that is, in these countries skill levels are more important than having a formal educational qualification in accounting for unemployment.

In response to the second research question – the impact of family background inequalities on current labour status, we have identified at least two axes of inequality. First, in most jurisdictions, the family’s sociocultural background does not have a direct impact on the probability of being unemployed. However, it is worth emphasizing the existence of an indirect effect, as an individual’s sociocultural origin is a significant determinant of their skill levels which, at the same time, are closely related to their labour market status. Second, immigrant status increases the risk of unemployment in nine European jurisdictions. Controlling for other family background and individual characteristics, this result suggests the existence of discrimination by country of origin. It should be stressed that our analysis examines the risk of unemployment, and does not assess the type of job or the working conditions of those who are employed.

In measuring the skills of the adult population, PIAAC has opened the door to a better understanding of the relationship between skills, education and labour markets. While we readily acknowledge certain methodological limitations in our approach (specifically, we perform our analysis using just one type of skill and we exclude from the study those adults with no working experience, which may be of relevance in countries with a large number of people seeking their first job) and the fact that we do not consider non-

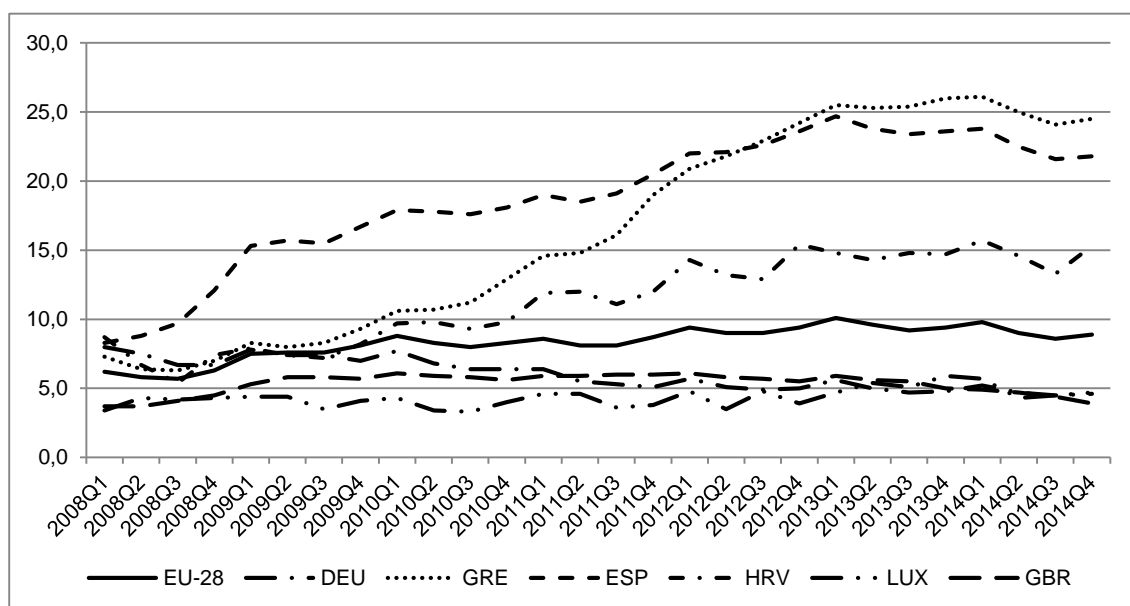
cognitive skills, we believe this study represents an initial step in the development of further research hypotheses and the design of successful education and training policies and labour market reforms in Europe. For example, in the case of Spain, the identification of the relevance of the number of years of experience may be linked to the existence of a segmented insider-outsider labour market (Bentolila et al., 2012), with skills probably playing an atypical role in markets of this kind. We therefore call for the development of country-level studies that might shed further light on the patterns identified in this article.

## References

- ABRASSART, A. (2013). Cognitive Skills Matter: The Employment Disadvantage of Low-Educated Workers in Comparative Perspective, *European Sociological Review*, 29(4), pp. 707-719.
- AGNELLO, L. & SOUSA, R.M. (2012) How do banking crises impact on income inequality?, *Applied Economic Letters*, 19(15), pp. 1425-1429.
- BARRO, R.J. (1996) Determinants of Economic Growth: A Cross-Country Empirical Study, *NBER Working Paper*, 5698.
- BECKER, G.S. (1962). Investment in Human Capital: A Theoretical Analysis, *Journal of Political Economy*, 70(5), pp. 9-49.
- BEHAGHEL, L., CAROLI, E. & ROGER, M. (2014). Age-biased Technical and Organizational Change, Training and Employment Prospects of Older Workers. *Economica*, 81, pp. 368–389
- BENTOLILA, S., DOLADO, J.J. & JIMENO, J.F. (2012) Reforming an insider-outsider labor market: The Spanish experience, *IZA Journal of European Labor Studies*, 1(4). DOI: 10.1186/2193-9012-1-4.
- BOSCH, M. & ESTEBAN-PRETEL, J. (2012) Job creation and job destruction in the presence of informal markets, *Journal of Development Economics*, 98, pp.270-286.
- CLARK, D. & MARTORELL, P. (2014) The Signaling Value of a High School Diploma, *Journal of Political Economy*, 122(2), pp. 282-318.
- DE BEER, P. (2012) Earnings and income inequality in the EU during the crisis, *International Labour Review*, 151(4), pp. 313-331.
- DICKSON, H. & HARMON, C. (2011) Economic Returns to Education: What We Know, What We Don't Know, and Where We Are Going – Some Brief Pointers, *Economics of Education Review*, 30(6), pp. 1118-1122.
- DONADO, A & WÄLDE, K. (2012) How trade unions increase welfare, *The Economic Journal*, 122, pp. 990-1009.
- GEBEL, M. & GIESECKE, J. (2011) Labor Market Flexibility and Inequality: The Changing Skill-Based Temporary Employment and Unemployment Risks in Europe, *Social Forces*, 90(10), pp. 17-19.

- GESTHUIZEN, M., SOLGA, H, & KÜNSTER, R. (2011) Context Matters: Economic Marginalization of Low-Educated Workers in Cross-National Perspective, *European Sociological Review*, 27(2), pp. 264-280.
- GOTTSCHALK, P. & SMEEDING, T.M. (1997) Cross-National Comparisons of Earnings and Income Inequality, *Journal of Economic Literature*, 35(2), pp. 633-687.
- JÄNTTI, M. & JENKINS, S. P. (2015) Income mobility, in A.B. ATKINSON & F. BOURGUIGNON (Eds) *Handbook of Income Distribution*, vol. 2, pp.807-935 (Amsterdam, North Holland)
- KRUEGER, A.B. & LINDAHL, M. (2001) Education for Growth: Why and for Whom?, *Journal of Economic Literature*, 39(4), pp. 1101-1136.
- MINCER, J. (1958) Investment in Human Capital and Personal Income Distribution, *Journal of Political Economy*, 66(4), pp. 281-302.
- OECD (2011) *Divided we Stand: Why Inequality Keeps Rising* (Paris, OECD).
- OECD (2013a) Strengthening Local Skills Strategies, *OECD Skills Strategy Spotlight Better Skills, Better Jobs, Better Lives*, 5.
- OECD (2013b) *OECD Skills Outlook 2013 First Results from the Survey of Adult Skills* (Paris, OECD).
- OECD (2013c) *What Students Know and Can Do* (Paris, OECD).
- OECD (2014) *Technical Report of the Survey of Adult Skills (PIAAC)* (Paris, OECD).
- PSACHAROPOULOS, G. & PATRINOS, H.A. (2004) Returns to investment in education: a further update, *Education Economics*, 12(2), pp.111-134.
- REICH, R. (2010). *Aftershock. The Next Economy and America's Future* (NY, Vintage Books).
- RICCI, F. & ZACHARIADIS (2013). Education Externalities on Longevity, *Economica*, 80, pp.404-440.
- SPENCE, M. (1976) Job Market Signaling, *The Quarterly Journal of Economics*, 87(3), pp. 355-374.
- STRAUSS, S. & LEUZE, K. (2013) Further Education of Higher Education Graduates: The More, the Better? *European Journal of Education*, 48(3), pp.436-453.

FIGURE 1. Evolution of the seasonally adjusted quarterly unemployment rates of the 25- to 64-year-old population of the EU-28 area between 2008 and 2014 (Eurostat).



Note: Germany (DEU), Luxembourg (LUX) and the United Kingdom (GBR) were the EU-28 countries with the lowest unemployment rates by December 2014; the opposite was the case for Spain (ESP), Greece (GRE) and Croatia (HRV).

FIGURE 2. Unemployment rates of the EU by educational levels (28 countries); 2002-2014 (Eurostat)

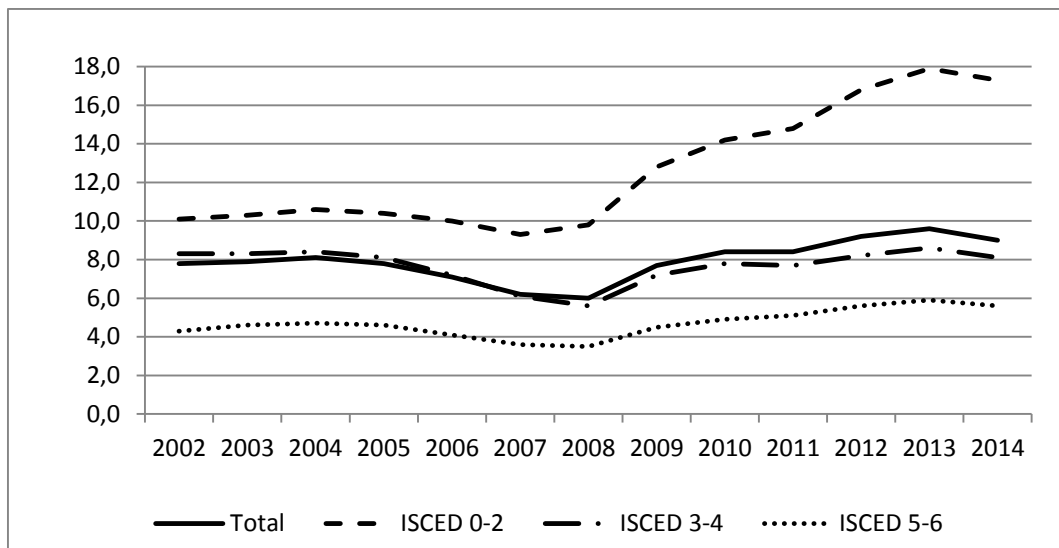


FIGURE 3. Mean literacy skills in PIAAC-2013 and 2012 unemployment rates (24 jurisdictions) (PIAAC-2013 and EUROSTAT).

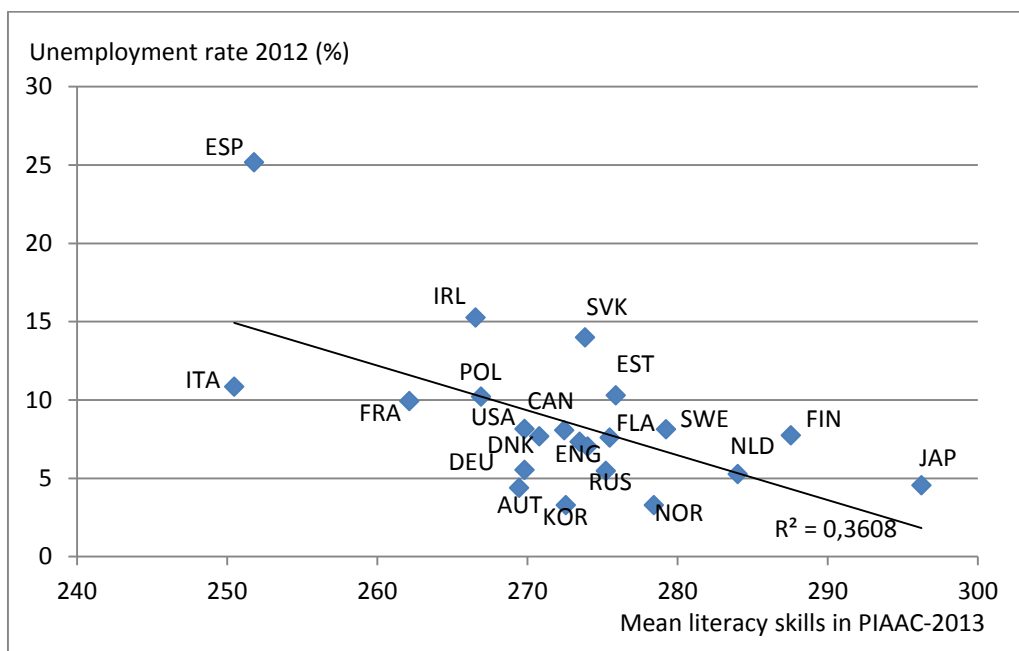
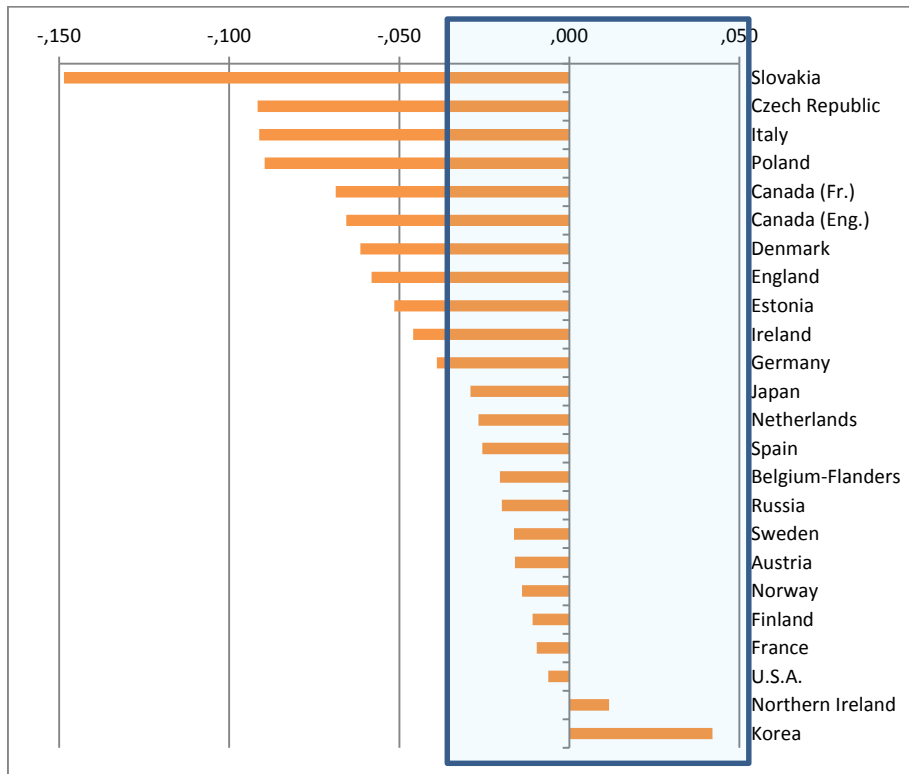


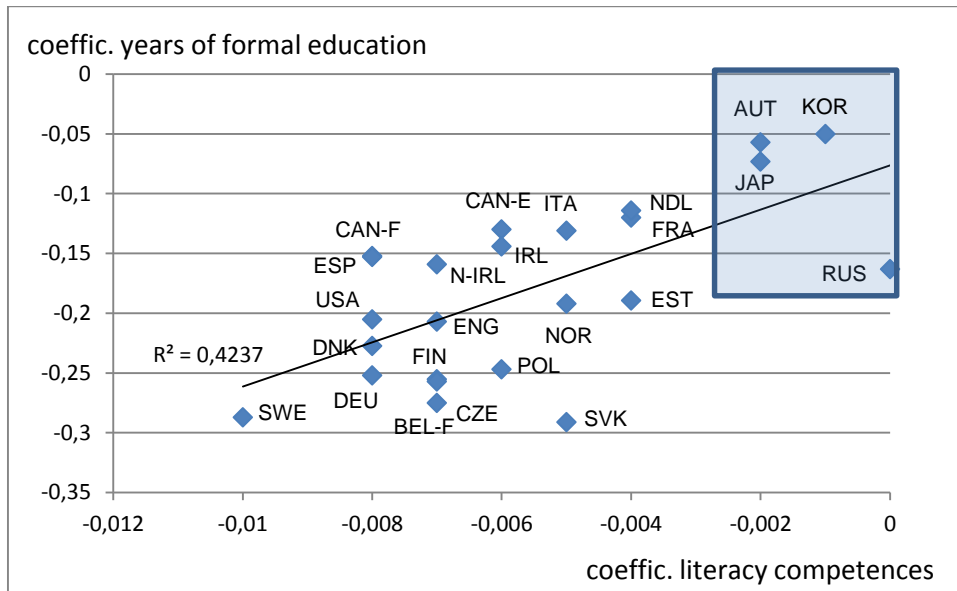
FIGURE 4. Effect of parental education on the probability of being unemployed; coefficients from a logistic regression model (PIAAC-2013).



Note: Coefficients with values within the shaded area are statistically not-significant.



FIGURE 5. Effects of formal education (in years) and literacy skills (as measured in PIAAC-2013) on the probability of being unemployed; coefficients from logistic regressions for 24 jurisdictions (PIAAC-2013).



Note: Coefficients with values within the shaded area are statistically not-significant.

TABLE 1. Summary statistics of variables included in the regressions

	<b>Mean</b>	<b>SD</b>	<b>Min</b>	<b>Max</b>
Reading skills	275.90	43.92	23.57	415.64
Age (years)	41.19	11.87	15	65
Gender (1, if man)	0.55	0.50	0	1
Family background: Non-immigrant	0.87	0.75	0	1
Family background: First-generation immigrant	0.10	0.30	0	1
Family background: Second-generation immigrant	0.03	0.15	0	1
Mother tongue (1, if official language in the country)	0.90	0.9	0	1
Maximum parental education: 1, if lower secondary	0.29	0.44	0	1
Maximum parental education: 1, if higher secondary	0.42	0.49	0	1
Maximum parental education: 1, if higher education	0.29	0.44	0	1
Civil status (1, if married or lives with couple)	0.66	0.47	0	1
Children (number)	1.60	1.12	0	25
Labour market experience (in years)	19.27	12.01	0	55
Economic sector: Primary	0.03	0.16	0	1
Economic sector: Industry	0.17	0.37	0	1
Economic sector: Construction	0.08	0.26	0	1
Economic sector: Services	0.72	0.44	0	1
Total sample size (N) = 85,229				

Source: self-elaboration from PIAAC-2013 microdata.

Note: mean statistics for a sample of 24 jurisdictions. Country-level summary statistics available upon request.

TABLE 2. Determinants of the probability of being unemployed in 24 jurisdictions. Results of logit regressions applied to PIAAC-2013.

	AUT	CZE	DEU	DNK	ENG	ESP	EST	FLA
Reading skills	-0.002	-0.007**	-0.008***	-0.008***	-0.007***	-0.008***	-0.004***	-0.007***
Age (years)	0.038	0.078***	0.057***	0.044***	0.034**	0.030***	0.076***	0.065***
Gender (1= man)	-0.402	0.104	0.472**	-0.09	0.476***	0.218***	0.255*	0.138
<i>Family background. Reference: non-immigrant</i>								
First-generation immigrant	1.215***	-0.18	-0.073	0.674*	-0.246	0.386	0.8***	0.915**
Second-generation immigrant	0.754	1.924***	-0.355	-0.119	-0.68	1.105*	0.541***	1.716***
Mother tongue is official in this country		-0.204	-0.673*	0.988***	-0.016	0.322	0.468	0.409
<i>Maximum parental education. Reference: lower secondary</i>								
Higher secondary	0.2	0.558	0.125	-0.091	-0.4*	-0.27**	-0.282*	-0.395*
Higher education	-0.183	-0.048	0.126	-0.355**	-0.738***	-0.112	-0.403**	-0.143
Married or living as a couple	-0.927***	-0.453*	-1.267***	-0.667***	-0.83***	-0.393***	-0.67***	-0.816***
Children	-0.002	0.06	-0.014	-0.133*	-0.045	-0.049	-0.013	-0.167*
Labour market experience (years)	-0.06***	-0.106***	-0.065***	-0.081***	-0.068***	-0.058***	-0.107***	-0.091***
<i>Economic Sector. Reference: Services</i>								
Primary		-0.92*		0.018	0.132	-0.512**	0.884***	1.155**
Industry	0.857***	-0.393*	-0.365*	0.106	0.284	0.12	0.186	0.621***
Construction	1.2***	-0.212	0.018	0.422*	0.438	0.928***	0.881***	-0.418
Pseudo-R <sup>2</sup>	0.099	0.067	0.101	0.094	0.090	0.082	0.090	0.119
Number of observations	2,268	3,368	2,257	4,983	2,808	3,892	4,854	3,206

Source: self-elaboration from PIAAC-2013 microdata.

Note: where \*\*\*, \*\* and \* denote, respectively, significance at 1, 5 and 10% levels. AUT: Austria; CZE: Czech Republic; DEU: Germany; DNK: Denmark; ENG: England; ESP: Spain; EST: Estonia; FLA: Belgium (Flanders).

TABLE 2 (continues). Determinants of the probability of being unemployed in 24 jurisdictions. Results of logit regressions applied to PIAAC-2013.

	FIN	FRA	IRL	ITA	NLD	N.IRL	NOR	SVK
Reading skills	-0.007***	-0.004***	-0.006***	-0.005**	-0.004**	-0.007	-0.005*	-0.005**
Age (years)	0.109***	0.041***	0.009	0.023**	0.051***	0.068***	0.04**	0.087***
Gender (1= man)	0.631***	-0.116	0.507***	-0.31*	0.376**	0.639**	0.019	-0.299**
<i>Family background.</i>								
<i>Reference: non-immigrant</i>								
First-generation immigrant	0.195	0.153	0.397**	0.157	0.73**	-1.049	0.054	-0.897
Second-generation immigrant	0.089	0.657***	-0.692		0.305		1.099	-1.945***
Mother tongue is official in this country	0.13	-0.254	0.116	0.136	-0.196	-0.331	-0.554	-0.718***
<i>Maximum parental education.</i>								
<i>Reference: lower secondary</i>								
Higher secondary	-0.137	0.259**	-0.416***	-0.304	-0.043	0.095	-0.099	-0.636***
Higher education	-0.234	-0.239	-0.503***	-0.518	-0.403	0.063	-0.194	-1.206***
Married or living as a couple	-1.131***	-0.872***	-0.733***	-0.413**	-1.224***	-1.209***	-0.634***	-0.793***
Children	0.037	-0.099*	0.108**	0.145**	-0.05	-0.037	-0.096	0.06
Labour market experience (years)	-0.125***	-0.073***	-0.043***	-0.071***	-0.05***	-0.093***	-0.081***	-0.118***
<i>Economic Sector. Reference:</i>								
<i>Services</i>								
Primary	0.075	0.598	-0.869**	0.177			0.033	0.642**
Industry	0.026	0.436***	0.196	0.264	-0.015	0.44	0.014	0.561***
Construction	0.4	0.514***	1.653***	0.909***	0.58**	1.309***	-0.365	1.02***
Pseudo-R <sup>2</sup>	0.130	0.099	0.128	0.083	0.098	0.153	0.100	0.120
Number of observations	2,566	3,941	3,824	3,156	3,536	2,086	3,343	3,494

Source: self-elaboration from PIAAC-2013 microdata.

Note: where \*\*\*, \*\* and \* denote, respectively, significance at 1, 5 and 10% levels. FIN: Finland; FRA: France; IRL: Ireland; ITA: Italy; NLD: Netherlands; N.IRL: Northern Ireland; NOR: Norway; SVK: Slovakia.

TABLE 2 (continues). Determinants of the probability of being unemployed in 24 jurisdictions. Results of logit regressions applied to PIAAC-2013.

	POL	RUS	SWE	CAN-E	CAN-F	JAP	KOR	USA
Reading skills	-0.006***	0	-0.01***	-0.006***	-0.008***	-0.002	-0.001	-0.008***
Age (years)	0.097***	0.095***	0.029*	0.034***	0.022*	0.06***	0.046***	0.026***
Gender (1= man)	0.073	0.226	0.143	0.071	0.011	0.274	0.537***	-0.028
<i>Family background.</i>								
<i>Reference: non-immigrant</i>								
First-generation immigrant	1.142	0.353	-0.371	0.025	-0.014		-0.204	-0.27
Second-generation immigrant	-1.316		-0.187	0.191	0.154			0.218
Mother tongue is official in this country	0.701**	0.251	-0.29	0.17	0.239			0.195
<i>Maximum parental education.</i>								
<i>Reference: lower secondary</i>								
Higher secondary	-0.032	0.272	-0.195	-0.428**	-0.527**	-0.05	-0.003	0.158
Higher education	-0.582**	-0.163	-0.109	-0.492**	-0.569**	-0.158	0.345	0.012
Married or living as a couple	-0.919***	-0.054	-0.787***	-0.477***	-0.473**	-0.542*	-1.077***	-0.48***
Children	0.119*	0.028***	0.067	-0.018	0.08*	-0.431**	-0.181*	0.044
Labour market experience (years)	-0.131***	-0.14*	-0.069***	-0.075***	-0.041***	-0.028*	-0.062***	-0.043***
<i>Economic Sector. Reference: Services</i>								
Primary	-0.49	0.98***	-0.359	0.216	0.789**	-0.102	0.693	0.525
Industry	0.217	1.305	0.412*	0.272	0.25	-0.266	-0.367	0.467***
Construction	0.301	0.855	-0.656	0.792***	1.177***	-1.571**	0.381	0.755***
Pseudo-R <sup>2</sup>	0.124	0.100	0.093	0.071	0.078	0.051	0.077	0.055
Number of observations	4,865	2,052	3,142	9,025	2,560	3,511	4,270	2,222

Source: self-elaboration from PIAAC-2013 microdata.

Note: where \*\*\*, \*\* and \* denote, respectively, significance at 1, 5 and 10% levels. POL: Poland; RUS: Russia; SWE: Sweden; CAN-E: Canada (English-speaking); CAN-F: Canada (French-speaking); JAP: Japan; KOR: Korea; USA: United States.

## 2011

- 2011/1, **Oppedisano, V; Turati, G.:** "What are the causes of educational inequalities and of their evolution over time in Europe? Evidence from PISA"
- 2011/2, **Dahlberg, M; Edmark, K; Lundqvist, H.:** "Ethnic diversity and preferences for redistribution"
- 2011/3, **Canova, L.; Vaglio, A.:** "Why do educated mothers matter? A model of parental help"
- 2011/4, **Delgado, F.J.; Lago-Peñas, S.; Mayor, M.:** "On the determinants of local tax rates: new evidence from Spain"
- 2011/5, **Piolatto, A.; Schuett, F.:** "A model of music piracy with popularity-dependent copying costs"
- 2011/6, **Duch, N.; García-Estévez, J.; Parellada, M.:** "Universities and regional economic growth in Spanish regions"
- 2011/7, **Duch, N.; García-Estévez, J.:** "Do universities affect firms' location decisions? Evidence from Spain"
- 2011/8, **Dahlberg, M.; Mörk, E.:** "Is there an election cycle in public employment? Separating time effects from election year effects"
- 2011/9, **Costas-Pérez, E.; Solé-Ollé, A.; Sorribas-Navarro, P.:** "Corruption scandals, press reporting, and accountability. Evidence from Spanish mayors"
- 2011/10, **Choi, A.; Calero, J.; Escardíbul, J.O.:** "Hell to touch the sky? Private tutoring and academic achievement in Korea"
- 2011/11, **Mira Godinho, M.; Cartaxo, R.:** "University patenting, licensing and technology transfer: how organizational context and available resources determine performance"
- 2011/12, **Duch-Brown, N.; García-Quevedo, J.; Montolio, D.:** "The link between public support and private R&D effort: What is the optimal subsidy?"
- 2011/13, **Breuilé, M.L.; Duran-Vigeneron, P.; Samson, A.L.:** "To assemble to resemble? A study of tax disparities among French municipalities"
- 2011/14, **McCann, P.; Ortega-Argilés, R.:** "Smart specialisation, regional growth and applications to EU cohesion policy"
- 2011/15, **Montolio, D.; Trillas, F.:** "Regulatory federalism and industrial policy in broadband telecommunications"
- 2011/16, **Pelegrín, A.; Bolancé, C.:** "Offshoring and company characteristics: some evidence from the analysis of Spanish firm data"
- 2011/17, **Lin, C.:** "Give me your wired and your highly skilled: measuring the impact of immigration policy on employers and shareholders"
- 2011/18, **Bianchini, L.; Revelli, F.:** "Green politics: urban environmental performance and government popularity"
- 2011/19, **López Real, J.:** "Family reunification or point-based immigration system? The case of the U.S. and Mexico"
- 2011/20, **Bogliacino, F.; Piva, M.; Vivarelli, M.:** "The impact of R&D on employment in Europe: a firm-level analysis"
- 2011/21, **Tonello, M.:** "Mechanisms of peer interactions between native and non-native students: rejection or integration?"
- 2011/22, **García-Quevedo, J.; Mas-Verdú, F.; Montolio, D.:** "What type of innovative firms acquire knowledge intensive services and from which suppliers?"
- 2011/23, **Banal-Estañol, A.; Macho-Stadler, I.; Pérez-Castrillo, D.:** "Research output from university-industry collaborative projects"
- 2011/24, **Lighthart, J.E.; Van Oudheusden, P.:** "In government we trust: the role of fiscal decentralization"
- 2011/25, **Mongrain, S.; Wilson, J.D.:** "Tax competition with heterogeneous capital mobility"
- 2011/26, **Caruso, R.; Costa, J.; Ricciuti, R.:** "The probability of military rule in Africa, 1970-2007"
- 2011/27, **Solé-Ollé, A.; Viladecans-Marsal, E.:** "Local spending and the housing boom"
- 2011/28, **Simón, H.; Ramos, R.; Sanromá, E.:** "Occupational mobility of immigrants in a low skilled economy. The Spanish case"
- 2011/29, **Piolatto, A.; Trotin, G.:** "Optimal tax enforcement under prospect theory"
- 2011/30, **Montolio, D.; Piolatto, A.:** "Financing public education when altruistic agents have retirement concerns"
- 2011/31, **García-Quevedo, J.; Pellegrino, G.; Vivarelli, M.:** "The determinants of YICs' R&D activity"
- 2011/32, **Goodspeed, T.J.:** "Corruption, accountability, and decentralization: theory and evidence from Mexico"
- 2011/33, **Pedraja, F.; Cordero, J.M.:** "Analysis of alternative proposals to reform the Spanish intergovernmental transfer system for municipalities"
- 2011/34, **Jofre-Monseny, J.; Sorribas-Navarro, P.; Vázquez-Grenno, J.:** "Welfare spending and ethnic heterogeneity: evidence from a massive immigration wave"
- 2011/35, **Lyytikäinen, T.:** "Tax competition among local governments: evidence from a property tax reform in Finland"
- 2011/36, **Brühlhart, M.; Schmidheiny, K.:** "Estimating the Rivalness of State-Level Inward FDI"
- 2011/37, **García-Pérez, J.I.; Hidalgo-Hidalgo, M.; Robles-Zurita, J.A.:** "Does grade retention affect achievement? Some evidence from Pisa"
- 2011/38, **Boffa, f.; Panzar, J.:** "Bottleneck co-ownership as a regulatory alternative"

- 2011/39, **González-Val, R.; Olmo, J.:** "Growth in a cross-section of cities: location, increasing returns or random growth?"
- 2011/40, **Anesi, V.; De Donder, P.:** "Voting under the threat of secession: accommodation vs. repression"
- 2011/41, **Di Pietro, G.; Mora, T.:** "The effect of the l'Aquila earthquake on labour market outcomes"
- 2011/42, **Brueckner, J.K.; Neumark, D.:** "Beaches, sunshine, and public-sector pay: theory and evidence on amenities and rent extraction by government workers"
- 2011/43, **Cortés, D.:** "Decentralization of government and contracting with the private sector"
- 2011/44, **Turati, G.; Montolio, D.; Piacenza, M.:** "Fiscal decentralisation, private school funding, and students' achievements. A tale from two Roman catholic countries"

---

2012

---

- 2012/1, **Montolio, D.; Trujillo, E.:** "What drives investment in telecommunications? The role of regulation, firms' internationalization and market knowledge"
- 2012/2, **Giesen, K.; Suedekum, J.:** "The size distribution across all "cities": a unifying approach"
- 2012/3, **Foremny, D.; Riedel, N.:** "Business taxes and the electoral cycle"
- 2012/4, **García-Estévez, J.; Duch-Brown, N.:** "Student graduation: to what extent does university expenditure matter?"
- 2012/5, **Durán-Cabré, J.M.; Esteller-Moré, A.; Salvadori, L.:** "Empirical evidence on horizontal competition in tax enforcement"
- 2012/6, **Pickering, A.C.; Rockey, J.:** "Ideology and the growth of US state government"
- 2012/7, **Vergolini, L.; Zanini, N.:** "How does aid matter? The effect of financial aid on university enrolment decisions"
- 2012/8, **Backus, P.:** "Gibrat's law and legacy for non-profit organisations: a non-parametric analysis"
- 2012/9, **Jofre-Monseny, J.; Marín-López, R.; Viladecans-Marsal, E.:** "What underlies localization and urbanization economies? Evidence from the location of new firms"
- 2012/10, **Mantovani, A.; Vandekerckhove, J.:** "The strategic interplay between bundling and merging in complementary markets"
- 2012/11, **García-López, M.A.:** "Urban spatial structure, suburbanization and transportation in Barcelona"
- 2012/12, **Revelli, F.:** "Business taxation and economic performance in hierarchical government structures"
- 2012/13, **Arqué-Castells, P.; Mohnen, P.:** "Sunk costs, extensive R&D subsidies and permanent inducement effects"
- 2012/14, **Boffa, F.; Piolatto, A.; Ponzetto, G.:** "Centralization and accountability: theory and evidence from the Clean Air Act"
- 2012/15, **Cheshire, P.C.; Hilber, C.A.L.; Kaplanis, I.:** "Land use regulation and productivity – land matters: evidence from a UK supermarket chain"
- 2012/16, **Choi, A.; Calero, J.:** "The contribution of the disabled to the attainment of the Europe 2020 strategy headline targets"
- 2012/17, **Silva, J.I.; Vázquez-Grenno, J.:** "The ins and outs of unemployment in a two-tier labor market"
- 2012/18, **González-Val, R.; Lanaspa, L.; Sanz, F.:** "New evidence on Gibrat's law for cities"
- 2012/19, **Vázquez-Grenno, J.:** "Job search methods in times of crisis: native and immigrant strategies in Spain"
- 2012/20, **Lessmann, C.:** "Regional inequality and decentralization – an empirical analysis"
- 2012/21, **Nuevo-Chiquero, A.:** "Trends in shotgun marriages: the pill, the will or the cost?"
- 2012/22, **Piil Damm, A.:** "Neighborhood quality and labor market outcomes: evidence from quasi-random neighborhood assignment of immigrants"
- 2012/23, **Ploeckl, F.:** "Space, settlements, towns: the influence of geography and market access on settlement distribution and urbanization"
- 2012/24, **Algan, Y.; Hémet, C.; Laitin, D.:** "Diversity and local public goods: a natural experiment with exogenous residential allocation"
- 2012/25, **Martínez, D.; Sjögren, T.:** "Vertical externalities with lump-sum taxes: how much difference does unemployment make?"
- 2012/26, **Cubel, M.; Sanchez-Pages, S.:** "The effect of within-group inequality in a conflict against a unitary threat"
- 2012/27, **Andini, M.; De Blasio, G.; Duranton, G.; Strange, W.C.:** "Marshallian labor market pooling: evidence from Italy"
- 2012/28, **Solé-Ollé, A.; Viladecans-Marsal, E.:** "Do political parties matter for local land use policies?"
- 2012/29, **Buonanno, P.; Durante, R.; Prarolo, G.; Vanin, P.:** "Poor institutions, rich mines: resource curse and the origins of the Sicilian mafia"
- 2012/30, **Anghel, B.; Cabrales, A.; Carro, J.M.:** "Evaluating a bilingual education program in Spain: the impact beyond foreign language learning"
- 2012/31, **Curto-Grau, M.; Solé-Ollé, A.; Sorribas-Navarro, P.:** "Partisan targeting of inter-governmental transfers & state interference in local elections: evidence from Spain"

- 2012/32, **Kappeler, A.; Solé-Ollé, A.; Stephan, A.; Väilä, T.:** "Does fiscal decentralization foster regional investment in productive infrastructure?"
- 2012/33, **Rizzo, L.; Zanardi, A.:** "Single vs double ballot and party coalitions: the impact on fiscal policy. Evidence from Italy"
- 2012/34, **Ramachandran, R.:** "Language use in education and primary schooling attainment: evidence from a natural experiment in Ethiopia"
- 2012/35, **Rothstein, J.:** "Teacher quality policy when supply matters"
- 2012/36, **Ahlfeldt, G.M.:** "The hidden dimensions of urbanity"
- 2012/37, **Mora, T.; Gil, J.; Sicras-Mainar, A.:** "The influence of BMI, obesity and overweight on medical costs: a panel data approach"
- 2012/38, **Pelegrín, A.; García-Quevedo, J.:** "Which firms are involved in foreign vertical integration?"
- 2012/39, **Agasisti, T.; Longobardi, S.:** "Inequality in education: can Italian disadvantaged students close the gap? A focus on resilience in the Italian school system"

---

2013

---

- 2013/1, **Sánchez-Vidal, M.; González-Val, R.; Viladecans-Marsal, E.:** "Sequential city growth in the US: does age matter?"
- 2013/2, **Hortas Rico, M.:** "Sprawl, blight and the role of urban containment policies. Evidence from US cities"
- 2013/3, **Lampón, J.F.; Cabanelas-Lorenzo, P.; Lago-Peñas, S.:** "Why firms relocate their production overseas? The answer lies inside: corporate, logistic and technological determinants"
- 2013/4, **Montolio, D.; Planells, S.:** "Does tourism boost criminal activity? Evidence from a top touristic country"
- 2013/5, **García-López, M.A.; Holl, A.; Viladecans-Marsal, E.:** "Suburbanization and highways: when the Romans, the Bourbons and the first cars still shape Spanish cities"
- 2013/6, **Bosch, N.; Espasa, M.; Montolio, D.:** "Should large Spanish municipalities be financially compensated? Costs and benefits of being a capital/central municipality"
- 2013/7, **Escardíbul, J.O.; Mora, T.:** "Teacher gender and student performance in mathematics. Evidence from Catalonia"
- 2013/8, **Arqué-Castells, P.; Viladecans-Marsal, E.:** "Banking towards development: evidence from the Spanish banking expansion plan"
- 2013/9, **Asensio, J.; Gómez-Lobo, A.; Matas, A.:** "How effective are policies to reduce gasoline consumption? Evaluating a quasi-natural experiment in Spain"
- 2013/10, **Jofre-Monseny, J.:** "The effects of unemployment benefits on migration in lagging regions"
- 2013/11, **Segarra, A.; García-Quevedo, J.; Teruel, M.:** "Financial constraints and the failure of innovation projects"
- 2013/12, **Jerrim, J.; Choi, A.:** "The mathematics skills of school children: How does England compare to the high performing East Asian jurisdictions?"
- 2013/13, **González-Val, R.; Tirado-Fabregat, D.A.; Viladecans-Marsal, E.:** "Market potential and city growth: Spain 1860-1960"
- 2013/14, **Lundqvist, H.:** "Is it worth it? On the returns to holding political office"
- 2013/15, **Ahlfeldt, G.M.; Maennig, W.:** "Homevoters vs. leasevoters: a spatial analysis of airport effects"
- 2013/16, **Lampón, J.F.; Lago-Peñas, S.:** "Factors behind international relocation and changes in production geography in the European automobile components industry"
- 2013/17, **Guío, J.M.; Choi, A.:** "Evolution of the school failure risk during the 2000 decade in Spain: analysis of Pisa results with a two-level logistic model"
- 2013/18, **Dahlby, B.; Rodden, J.:** "A political economy model of the vertical fiscal gap and vertical fiscal imbalances in a federation"
- 2013/19, **Acacia, F.; Cubel, M.:** "Strategic voting and happiness"
- 2013/20, **Hellerstein, J.K.; Kutzbach, M.J.; Neumark, D.:** "Do labor market networks have an important spatial dimension?"
- 2013/21, **Pellegrino, G.; Savona, M.:** "Is money all? Financing versus knowledge and demand constraints to innovation"
- 2013/22, **Lin, J.:** "Regional resilience"
- 2013/23, **Costa-Campi, M.T.; Duch-Brown, N.; García-Quevedo, J.:** "R&D drivers and obstacles to innovation in the energy industry"
- 2013/24, **Huisman, R.; Stradnic, V.; Westgaard, S.:** "Renewable energy and electricity prices: indirect empirical evidence from hydro power"
- 2013/25, **Dargaud, E.; Mantovani, A.; Reggiani, C.:** "The fight against cartels: a transatlantic perspective"
- 2013/26, **Lambertini, L.; Mantovani, A.:** "Feedback equilibria in a dynamic renewable resource oligopoly: pre-emption, voracity and exhaustion"



- 2013/27, Feld, L.P.; Kalb, A.; Moessinger, M.D.; Osterloh, S.: "Sovereign bond market reactions to fiscal rules and no-bailout clauses – the Swiss experience"
- 2013/28, Hilber, C.A.L.; Vermeulen, W.: "The impact of supply constraints on house prices in England"
- 2013/29, Revelli, F.: "Tax limits and local democracy"
- 2013/30, Wang, R.; Wang, W.: "Dress-up contest: a dark side of fiscal decentralization"
- 2013/31, Dargaud, E.; Mantovani, A.; Reggiani, C.: "The fight against cartels: a transatlantic perspective"
- 2013/32, Saarimaa, T.; Tukiainen, J.: "Local representation and strategic voting: evidence from electoral boundary reforms"
- 2013/33, Agasisti, T.; Murtinu, S.: "Are we wasting public money? No! The effects of grants on Italian university students' performances"
- 2013/34, Flacher, D.; Harari-Kermadec, H.; Moulin, L.: "Financing higher education: a contributory scheme"
- 2013/35, Carozzi, F.; Repetto, L.: "Sending the pork home: birth town bias in transfers to Italian municipalities"
- 2013/36, Coad, A.; Frankish, J.S.; Roberts, R.G.; Storey, D.J.: "New venture survival and growth: Does the fog lift?"
- 2013/37, Giulietti, M.; Grossi, L.; Waterson, M.: "Revenues from storage in a competitive electricity market: Empirical evidence from Great Britain"

---

2014

---

- 2014/1, Montolio, D.; Planells-Struse, S.: "When police patrols matter. The effect of police proximity on citizens' crime risk perception"
- 2014/2, García-López, M.A.; Solé-Ollé, A.; Viladecans-Marsal, E.: "Do land use policies follow road construction?"
- 2014/3, Piolatto, A.; Rablen, M.D.: "Prospect theory and tax evasion: a reconsideration of the Yitzhaki puzzle"
- 2014/4, Cuberes, D.; González-Val, R.: "The effect of the Spanish Reconquest on Iberian Cities"
- 2014/5, Durán-Cabré, J.M.; Esteller-Moré, E.: "Tax professionals' view of the Spanish tax system: efficiency, equity and tax planning"
- 2014/6, Cubel, M.; Sanchez-Pages, S.: "Difference-form group contests"
- 2014/7, Del Rey, E.; Racionero, M.: "Choosing the type of income-contingent loan: risk-sharing versus risk-pooling"
- 2014/8, Torregrosa Hetland, S.: "A fiscal revolution? Progressivity in the Spanish tax system, 1960-1990"
- 2014/9, Piolatto, A.: "Itemised deductions: a device to reduce tax evasion"
- 2014/10, Costa, M.T.; García-Quevedo, J.; Segarra, A.: "Energy efficiency determinants: an empirical analysis of Spanish innovative firms"
- 2014/11, García-Quevedo, J.; Pellegrino, G.; Savona, M.: "Reviving demand-pull perspectives: the effect of demand uncertainty and stagnancy on R&D strategy"
- 2014/12, Calero, J.; Escardíbul, J.O.: "Barriers to non-formal professional training in Spain in periods of economic growth and crisis. An analysis with special attention to the effect of the previous human capital of workers"
- 2014/13, Cubel, M.; Sanchez-Pages, S.: "Gender differences and stereotypes in the beauty"
- 2014/14, Piolatto, A.; Schuett, F.: "Media competition and electoral politics"
- 2014/15, Montolio, D.; Trillas, F.; Trujillo-Baute, E.: "Regulatory environment and firm performance in EU telecommunications services"
- 2014/16, Lopez-Rodriguez, J.; Martinez, D.: "Beyond the R&D effects on innovation: the contribution of non-R&D activities to TFP growth in the EU"
- 2014/17, González-Val, R.: "Cross-sectional growth in US cities from 1990 to 2000"
- 2014/18, Vona, F.; Nicolli, F.: "Energy market liberalization and renewable energy policies in OECD countries"
- 2014/19, Curto-Grau, M.: "Voters' responsiveness to public employment policies"
- 2014/20, Duro, J.A.; Teixidó-Figueras, J.; Padilla, E.: "The causal factors of international inequality in CO<sub>2</sub> emissions per capita: a regression-based inequality decomposition analysis"
- 2014/21, Fleten, S.E.; Huisman, R.; Kilic, M.; Pennings, E.; Westgaard, S.: "Electricity futures prices: time varying sensitivity to fundamentals"
- 2014/22, Afcha, S.; García-Quevedo, J.: "The impact of R&D subsidies on R&D employment composition"
- 2014/23, Mir-Artigues, P.; del Río, P.: "Combining tariffs, investment subsidies and soft loans in a renewable electricity deployment policy"
- 2014/24, Romero-Jordán, D.; del Río, P.; Peñasco, C.: "Household electricity demand in Spanish regions. Public policy implications"
- 2014/25, Salinas, P.: "The effect of decentralization on educational outcomes: real autonomy matters!"
- 2014/26, Solé-Ollé, A.; Sorribas-Navarro, P.: "Does corruption erode trust in government? Evidence from a recent surge of local scandals in Spain"
- 2014/27, Costas-Pérez, E.: "Political corruption and voter turnout: mobilization or disaffection?"

- 2014/28, **Cubel, M.; Nuevo-Chiquero, A.; Sanchez-Pages, S.; Vidal-Fernandez, M.:** "Do personality traits affect productivity? Evidence from the LAB"
- 2014/29, **Teresa Costa, M.T.; Trujillo-Baute, E.:** "Retail price effects of feed-in tariff regulation"
- 2014/30, **Kilic, M.; Trujillo-Baute, E.:** "The stabilizing effect of hydro reservoir levels on intraday power prices under wind forecast errors"
- 2014/31, **Costa-Campi, M.T.; Duch-Brown, N.:** "The diffusion of patented oil and gas technology with environmental uses: a forward patent citation analysis"
- 2014/32, **Ramos, R.; Sanromá, E.; Simón, H.:** "Public-private sector wage differentials by type of contract: evidence from Spain"
- 2014/33, **Backus, P.; Esteller-Moré, A.:** "Is income redistribution a form of insurance, a public good or both?"
- 2014/34, **Huisman, R.; Trujillo-Baute, E.:** "Costs of power supply flexibility: the indirect impact of a Spanish policy change"
- 2014/35, **Jerrim, J.; Choi, A.; Simancas Rodríguez, R.:** "Two-sample two-stage least squares (TSTSLS) estimates of earnings mobility: how consistent are they?"
- 2014/36, **Mantovani, A.; Tarola, O.; Vergari, C.:** "Hedonic quality, social norms, and environmental campaigns"
- 2014/37, **Ferraresi, M.; Galmarini, U.; Rizzo, L.:** "Local infrastructures and externalities: Does the size matter?"
- 2014/38, **Ferraresi, M.; Rizzo, L.; Zanardi, A.:** "Policy outcomes of single and double-ballot elections"

---

## 2015

- 2015/1, **Foremny, D.; Freier, R.; Moessinger, M-D.; Yeter, M.:** "Overlapping political budget cycles in the legislative and the executive"
- 2015/2, **Colombo, L.; Galmarini, U.:** "Optimality and distortionary lobbying: regulating tobacco consumption"
- 2015/3, **Pellegrino, G.:** "Barriers to innovation: Can firm age help lower them?"
- 2015/4, **Hémet, C.:** "Diversity and employment prospects: neighbors matter!"
- 2015/5, **Cubel, M.; Sanchez-Pages, S.:** "An axiomatization of difference-form contest success functions"
- 2015/6, **Choi, A.; Jerrim, J.:** "The use (and misuse) of Pisa in guiding policy reform: the case of Spain"
- 2015/7, **Durán-Cabré, J.M.; Esteller-Moré, A.; Salvadori, L.:** "Empirical evidence on tax cooperation between sub-central administrations"
- 2015/8, **Batalla-Bejerano, J.; Trujillo-Baute, E.:** "Analysing the sensitivity of electricity system operational costs to deviations in supply and demand"
- 2015/9, **Salvadori, L.:** "Does tax enforcement counteract the negative effects of terrorism? A case study of the Basque Country"
- 2015/10, **Montolio, D.; Planells-Struse, S.:** "How time shapes crime: the temporal impacts of football matches on crime"
- 2015/11, **Piolatto, A.:** "Online booking and information: competition and welfare consequences of review aggregators"
- 2015/12, **Boffa, F.; Pingali, V.; Sala, F.:** "Strategic investment in merchant transmission: the impact of capacity utilization rules"
- 2015/13, **Slemrod, J.:** "Tax administration and tax systems"
- 2015/14, **Arqué-Castells, P.; Cartaxo, R.M.; García-Quevedo, J.; Mira Godinho, M.:** "How inventor royalty shares affect patenting and income in Portugal and Spain"
- 2015/15, **Montolio, D.; Planells-Struse, S.:** "Measuring the negative externalities of a private leisure activity: hooligans and pickpockets around the stadium"
- 2015/16, **Batalla-Bejerano, J.; Costa-Campi, M.T.; Trujillo-Baute, E.:** "Unexpected consequences of liberalisation: metering, losses, load profiles and cost settlement in Spain's electricity system"
- 2015/17, **Batalla-Bejerano, J.; Trujillo-Baute, E.:** "Impacts of intermittent renewable generation on electricity system costs"
- 2015/18, **Costa-Campi, M.T.; Paniagua, J.; Trujillo-Baute, E.:** "Are energy market integrations a green light for FDI?"
- 2015/19, **Jofre-Monseny, J.; Sánchez-Vidal, M.; Viladecans-Marsal, E.:** "Big plant closures and agglomeration economies"
- 2015/20, **García-López, M.A.; Hémet, C.; Viladecans-Marsal, E.:** "How does transportation shape intrametropolitan growth? An answer from the regional express rail"
- 2015/21, **Esteller-Moré, A.; Galmarini, U.; Rizzo, L.:** "Fiscal equalization under political pressures"
- 2015/22, **Escardíbul, J.O.; Afcha, S.:** "Determinants of doctorate holders' job satisfaction. An analysis by employment sector and type of satisfaction in Spain"
- 2015/23, **Aidt, T.; Asatryan, Z.; Badalyan, L.; Heinemann, F.:** "Vote buying or (political) business (cycles) as usual?"
- 2015/24, **Albæk, K.:** "A test of the 'lose it or use it' hypothesis in labour markets around the world"
- 2015/25, **Angelucci, C.; Russo, A.:** "Petty corruption and citizen feedback"

- 2015/26, Moriconi, S.; Picard, P.M.; Zanaj, S.:** "Commodity taxation and regulatory competition"
- 2015/27, Brekke, K.R.; Garcia Pires, A.J.; Schindler, D.; Schjelderup, G.:** "Capital taxation and imperfect competition: ACE vs. CBIT"
- 2015/28, Redonda, A.:** "Market structure, the functional form of demand and the sensitivity of the vertical reaction function"
- 2015/29, Ramos, R.; Sanromá, E.; Simón, H.:** "An analysis of wage differentials between full-and part-time workers in Spain"
- 2015/30, Garcia-López, M.A.; Pasidis, I.; Viladecans-Marsal, E.:** "Express delivery to the suburbs the effects of transportation in Europe's heterogeneous cities"
- 2015/31, Torregrosa, S.:** "Bypassing progressive taxation: fraud and base erosion in the Spanish income tax (1970-2001)"
- 2015/32, Choi, H.; Choi, A.:** "When one door closes: the impact of the hagwon curfew on the consumption of private tutoring in the republic of Korea"
- 2015/33, Escardíbul, J.O.; Helmy, N.:** "Decentralisation and school autonomy impact on the quality of education: the case of two MENA countries"
- 2015/34, González-Val, R.; Marcén, M.:** "Divorce and the business cycle: a cross-country analysis"

