



Title	FORMATION OF THE UNEQUAL-MASS BINARY PROTOSTARS IN L1551NE BY ROTATIONALLY DRIVEN FRAGMENTATION
Author(s)	Lim, J JL; Hanawa, T; Yeung, KH; Takakuwa, S; Matsumoto, T; Saigo, K
Citation	The Astrophysical Journal, 2016, v. 831 n. 1, p. 90:1-13
Issued Date	2016
URL	http://hdl.handle.net/10722/238690
Rights	The Astrophysical Journal. Copyright © American Astronomical Society, co-published with Institute of Physics Publishing, Inc.; This work is licensed under a Creative Commons Attribution-NonCommercial-NoDerivatives 4.0 International License.



FORMATION OF THE UNEQUAL-MASS BINARY PROTOSTARS IN L1551NE BY ROTATIONALLY DRIVEN FRAGMENTATION

JEREMY LIM^{1,2}, TOMOYUKI HANAWA³, PAUL K. H. YEUNG¹, SHIGEHISA TAKAKUWA⁴, TOMOAKI MATSUMOTO⁵, AND KAZUYA SAIGO⁶

¹Department of Physics, The University of Hong Kong, Pokfulam Road, Hong Kong

²Laboratory for Space Research, Faculty of Science, The University of Hong Kong, Pokfulam Road, Hong Kong

³Center for Frontier Science, Chiba University, Inage-ku, Chiba 263-8522, Japan

⁴Department of Physics and Astronomy, Graduate School of Science and Engineering, Kagoshima University,
1-21-35 Korimoto, Kagoshima, Kagoshima, 890-0065, Japan

⁵Faculty of Humanity and Environment, Hosei University, Chiyoda-ku, Tokyo 102-8160, Japan

⁶Department of Physical Science, Graduate School of Science, Osaka Prefecture University, 1-1 Gakuen-cho, Naka-ku, Sakai, Osaka 599-8531, Japan

Received 2016 June 28; revised 2016 August 10; accepted 2016 August 10; published 2016 October 28

ABSTRACT

We present observations at 7 mm that fully resolve the two circumstellar disks and a reanalysis of archival observations at 3.5 cm that resolve along their major axes the two ionized jets of the Class I binary protostellar system L1551NE. We show that the two circumstellar disks are better fit by a shallow inner and steep outer power law than a truncated power law. The two disks have very different transition radii between their inner and outer regions of ~ 18.6 au and ~ 8.9 au, respectively. Assuming that they are intrinsically circular and geometrically thin, we find that the two circumstellar disks are parallel with each other and orthogonal in projection to their respective ionized jets. Furthermore, the two disks are closely aligned if not parallel with their circumbinary disk. Over an interval of ~ 10 yr, source B (possessing the circumsecondary disk) has moved northward with respect to and likely away from source A, indicating an orbital motion in the same direction as the rotational motion of their circumbinary disk. All the aforementioned elements therefore share the same axis for their angular momentum, indicating that L1551NE is a product of rotationally driven fragmentation of its parental core. Assuming a circular orbit, the relative disk sizes are compatible with theoretical predictions for tidal truncation by a binary system having a mass ratio of ~ 0.2 , in agreement with the reported relative separations of the two protostars from the center of their circumbinary disk. The transition radii of both disks, however, are a factor of $\gtrsim 1.5$ smaller than their predicted tidally truncated radii.

Key words: binaries: close – binaries: visual – circumstellar matter – stars: formation – stars: jets – stars: protostars

1. INTRODUCTION

Fragmentation—the internal breakup of a core into two or more fragments—is the leading contender for how the majority of multiple stars form (e.g., review by Goodwin et al. 2007). Fission and capture, two other hypotheses considered for the formation of multiple-star systems, have been ruled out or are disfavored in large part based on theoretical considerations. Two different mechanisms have been proposed to drive fragmentation: (i) bulk (large-scale ordered) rotation, and (ii) local (small-scale) turbulence (for a succinct description of how these mechanisms lead to fragmentation, see Lim et al. 2016; see also Section 6.4). Depending on the circumstances involved, these two mechanisms can predict very different geometries and dynamics for the resulting binary system: i.e., alignment between the circumstellar disks and/or spin axes of the binary components, as well as alignment between their circumstellar disks and orbital plane or between their spin and orbital axes. Comparisons between binary properties and model predictions for their formation, however, are complicated by possible internal or external interactions during or after the protostellar phase. Depending on the nature of the interaction, the binary system can be driven either toward or away from alignment, altering its original geometry and dynamics, thus masking its formation process.

Recently, we showed that the geometrical and dynamical relationship between the binary (protostellar) system and its surrounding bulk envelope (remnant parental core) provide the crucial distinction between the two possible modes of fragmentation (Lim et al. 2016). In the Class I system L1551 IRS 5, we

found that the circumstellar disks of the binary protostars are not just closely parallel with each other, but also closely parallel with their surrounding flattened envelope. Furthermore, the protostars are orbiting each other in the same direction as the rotation of their surrounding envelope. The close relationship between all these different elements indicates that their angular momenta share a common axis, and points to large-scale ordered rotation for driving the fragmentation of the L1551 IRS 5 parental core. Orbital solutions to measurements of the relative proper motion between the binary protostars, omitting solutions for which their circumstellar disks are predicted to be tidally truncated to sizes smaller than are observed, favor a circular or low-eccentricity orbit tilted by up to $\sim 25^\circ$ from the circumstellar disks. If the fragments that gave rise to the binary protostars in L1551 IRS 5 were produced at different heights or on opposite sides of the midplane in the flattened central region of a rotating core, the resulting protostars would then exhibit circumstellar disks parallel with each other and their surrounding flattened envelope but tilted from the orbital plane, as is observed. Early during their formation, tidal interactions between the individual protostars and their surrounding, much more massive, flattened envelope would have naturally given rise to an essentially circular orbit, which has presumably been (largely) preserved during the subsequent evolution (growth) of the binary protostars.

Here, we present observations that spatially resolve for the first time the circumstellar disks of the binary protostars in the Class I system L1551NE. Lying in the close vicinity of L1551 IRS 5, L1551NE is surrounded by a circumbinary disk (Takakuwa et al. 2012, 2014), which itself is embedded in a

Table 1
Map Parameters

Year	Wavelength	Map Weighting	Synthesized Beam					rms Noise (μ Jy)
			Major Axis (mas) (au)		Minor Axis (mas) (au)		Position Angle (deg)	
1994.89	3.5 cm	Natural	246.8	34.6	207.0	29.0	96.36	30
2002.30	3.5 cm	Natural	356.1	49.9	269.0	37.7	52.10	8
2012.91	7 mm	Natural	55.4	7.8	52.5	7.4	-1.20	12
		Robust (0.5)	44.9	6.3	41.8	5.9	-6.5	15
		Robust (-0.25)	36.3	5.1	33.8	4.7	-12.7	20

flattened infalling envelope (Takakuwa et al. 2013). The circumbinary disk exhibits clear deviations from Keplerian motion that we successfully modeled as the action of gravitational torques from the central binary system (Takakuwa et al. 2014). These torques force material in opposing segments of the circumbinary disk to orbit faster and collide with material upstream that is orbiting more slowly, resulting in a two-armed spiral pattern (comprising material compressed to higher density) imprinted onto the circumbinary disk. At opposing segments between the two spiral arms, torques from the binary protostellar system force material to orbit more slowly, resulting in inflows through the circumbinary disk. Successfully reproducing the observed spatial-kinematic structure of the circumbinary disk, the model assumes a coplanar binary system having an orbital motion in the same sense as the rotation of the circumbinary disk. In addition, based on the projected separation of the two protostars from the inferred kinematic center of the circumbinary disk, the model adopts a binary mass ratio of 0.19. The results presented here confirm that L1551NE is indeed a coplanar binary system, indicate an orbital motion for the binary protostars in the same sense as the rotational motion of their circumbinary disk, and provide entirely independent evidence in support of the inferred mass ratio of the binary system.

This paper is organized as follows. Our observations and data reduction are described in Section 2. To study the relative proper motion of the binary protostars, we reduced previously published archival data on the ionized jets in L1551NE dating back nearly 20 yr before our observations, as described also in Section 2. The results from all these data are presented in Section 3. In Section 4, we describe how we determined the physical parameters of the individual circumstellar disks. In Section 5, we present the relative proper motion of the binary protostars. In Section 6, we assemble all the available evidence (including that in the published literature) to infer the manner in which L1551NE formed. In Section 7, we provide a thorough summary of our results, analyses, and interpretation. Throughout this paper, we assume a distance to L1551NE of 140 pc (Kenyon et al. 1994; Bertout et al. 1999).

2. OBSERVATIONS

During our observations of L1551 IRS 5 with the Jansky Very Large Array (VLA) on 2012 November 16, 28, and 29 as reported in Lim et al. (2016), we also observed L1551NE. The observations of L1551NE were interleaved with those of L1551 IRS 5; i.e., employing the scan sequence J0431+1731 (the secondary calibrator) \rightarrow L1551 IRS 5 \rightarrow J0431+1731 \rightarrow L1551NE \rightarrow J0431+1731 \rightarrow L1551 IRS 5 \rightarrow J0431+1731 \rightarrow L1551NE, etc. The observations spanned a total duration of \sim 2.5 hr on each day. To mitigate against rapid changes in

absorption and refraction by the Earth’s atmosphere, causing rapid fluctuations in the measured visibility amplitude and phase of the target source, we switched between L1551NE and the nearby quasar J0431+1731 every 20 s. As a check of the quality of the amplitude and phase corrections, we performed similar observations of a quasar lying close to L1551NE, J0431+2037, every \sim 30 minutes. This quasar also was used to check the pointing accuracy of the antennas, a task performed every \sim 1 hr. The bright quasar J0510+1800 served as the bandpass calibrator, and the quasar 3C 48 as the flux calibrator.

We edited, calibrated, and made maps from the data using the Common Astronomy Software Applications (CASA) package. Considerable effort went into weeding out radio frequency interference (RFI), which can be very weak and difficult to find, to ensure that the actual data used for making the maps are as free of contamination as is possible. The calibration was performed in the standard manner (e.g., examples in https://casaguides.nrao.edu/index.php/Karl_G._Jansky_VLA_Tutorials) as recommended by the observatory. Maps were made using three different weighting schemes, natural (i.e., equal weights on all visibilities), robust = 0.5, and robust = -0.25 (robust utilizes unequal weights designed to provide a more uniform sampling in uv -space), to accentuate different features of interest. The synthesized beams and rms noise fluctuations (σ) of the maps thus made are summarized in Table 1. Notice that the synthesized beams obtained using the different weighting schemes are close to circular, making it easier to visually interpret as well as to analyze the maps. All subsequent analyses of the images obtained were made using the Astronomical Image Processing System (AIPS) and GALFIT (Peng et al. 2002, 2010) software packages.

For studying the relative proper motion of the binary protostars, we reduced data taken by Rodríguez et al. (1995) on 1994 April 10 and 22 and by Reipurth et al. (2002) on 2000 November 26–29, using also the VLA but at a wavelength of 3.5 cm. We edited, calibrated, and made maps from the 1994 and 2000 observations (combining the data taken in each year) using AIPS. The synthesized beams and rms noise fluctuations (σ) of the maps, both made with natural weighting, are summarized in Table 1. In the observation of Rodríguez et al. (1995) in 1994, the telescope was pointed at L1551 IRS5. L1551NE is located at an angular distance of $2\frac{1}{5}$ from L1551 IRS5, almost at the half-power point of the telescope primary beam (FWHM of $5\frac{1}{3}$ at 3.5 cm) in that observation. The map made was therefore corrected for the primary beam response of the antennas. In the observation of Reipurth et al. (2002) in 2002, the telescope was pointed at L1551NE.

In all subsequent analyses, the quoted uncertainties in flux densities correspond to statistical uncertainties only and thus do not include any systematic uncertainties (which are difficult to quantify) that arise in transferring the flux density of the

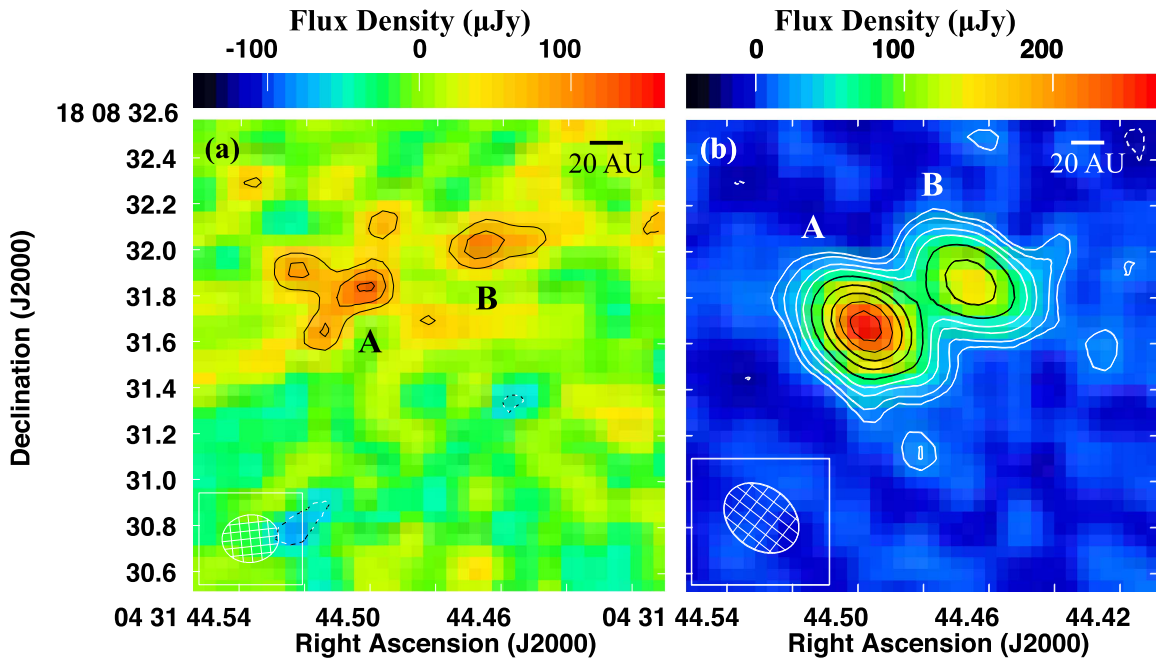


Figure 1. 3.5 cm images showing a pair of ionized jets from L1551NE in (a) 1994 and (b) 2002. The brighter source to the southeast is referred to as source A, and the dimmer source to the northwest as source B (Reipurth et al. 2002). Contour levels are plotted at -3 , -2 , 2 , 3 , and $5 \times \sigma$ (where $\sigma = 30 \mu\text{Jy beam}^{-1}$, the rms noise level) in panel (a) and -3 , -2 , 2 , 3 , 5 , 7 , 10 , 15 , 20 , and $25 \times \sigma$ ($\sigma = 8 \mu\text{Jy beam}^{-1}$) in panel (b). The synthesized beam is indicated by the thatched ellipse at the lower left corner of each panel and has an FWHM of $264.8 \text{ mas} \times 207.0 \text{ mas}$ ($34.6 \text{ au} \times 29.0 \text{ au}$) and a position angle of $52^\circ 1$ in panel (a), and $356.1 \text{ mas} \times 269.0 \text{ mas}$ ($49.9 \text{ au} \times 37.7 \text{ au}$) and a position angle of $96^\circ 36$ in panel (b).

Table 2
Parameters of Ionized Jets

Year	Source	R.A. (J2000)	Decl. (J2000)	Flux Density (μJy)	Major Axis (mas)	Position Angle (deg)
1994.89	A	$04^{\text{h}}31^{\text{m}}44^{\text{s}}.4975 \pm 0.0038$	$+18^\circ 08' 31'' 90 \pm 0.03$	269 ± 85	484^{+131}_{-138}	106^{+12}_{-14}
	B	$04^{\text{h}}31^{\text{m}}44^{\text{s}}.4625 \pm 0.0023$	$+18^\circ 08' 32'' 10 \pm 0.02$	153 ± 54	252^{+97}_{-119}	108^{+40}_{-41}
2002.30	A	$04^{\text{h}}31^{\text{m}}44^{\text{s}}.49701 \pm 0.00048$	$+18^\circ 08' 31'' 673 \pm 0.005$	348 ± 22	305^{+22}_{-20}	61^{+4}_{-3}
	B	$04^{\text{h}}31^{\text{m}}44^{\text{s}}.46643 \pm 0.00088$	$+18^\circ 08' 31'' 864 \pm 0.009$	217 ± 23	359^{+34}_{-37}	69^{+4}_{-5}

Note. Flux densities listed are integrated quantities based on a two-dimensional Gaussian fit to each source.

primary calibrator to the secondary calibrator, and from the secondary calibrator to the target source.

3. RESULTS

3.1. Ionized Jets

Figure 1 shows images of L1551NE at 3.5 cm made from data taken by Rodríguez et al. (1995) in 1994 (Figure 1(a)) and Reipurth et al. (2002) in 2002 (Figure 1(b)). Two sources are detected in both maps: the stronger source, located to the southeast, was referred to by Reipurth et al. (2002) as source A, and the weaker source to the northwest as source B. We henceforth refer to these two sources in the same manner.

In Table 2, we list the parameters of the two sources based on a two-dimensional Gaussian fit to each source. In the 2002 map, which is far superior in sensitivity (a factor of nearly four lower noise) to the 1994 map, the results of the fits show that both sources are clearly resolved (at a significance level of 14σ for source A and 10σ for source B) along their major but not their minor axes. In this map, the major axes of both sources are aligned to within measurement uncertainties (difference of $8^\circ \pm 6^\circ$) along an average position angle of $65^\circ \pm 3^\circ$ (whereas the synthesized beam has a position angle for its major axis of

$52^\circ 1$). We note that similar model fittings to the two sources in a robust-weighted map, which provides a higher angular resolution and hence in which the two sources are better separated, do not improve the precision of the fitting parameters. The position angle of the ionized jets as measured at 3.5 cm is identical to within the measurement uncertainties with the position angle of an [Fe II] jet detected by Reipurth et al. (2000) and Hayashi & Pyo (2009) originating from the vicinity of L1551NE, oriented along a position angle of 63° (Reipurth et al. 2000) or 64° (Hayashi & Pyo 2009). Herbig-Haro objects and a bipolar molecular outflow detected in CO, all driven by L1551NE, lie along approximately the same position angle as the [Fe II] jet (Moriarty-Schieven et al. 2000). Reipurth et al. (2000) found that the axis of the [Fe II] jet is offset from (lies to the south of) the apex of a cone-shaped nebula that is located just southwest of L1551NE. This nebula comprises scattered light from the nearer side of an outflow cavity evacuated by L1551NE. Based on the observed offset, Reipurth et al. (2000) attributed the [Fe II] jet to source A and associated the apex of the cone-shaped nebula with source B.

In the 1994 map, source A is formally resolved (at the 3.7σ confidence level) but not source B (only at the 2.6σ level). In this map, the major axis of source A is different by $45^\circ \pm 15^\circ$

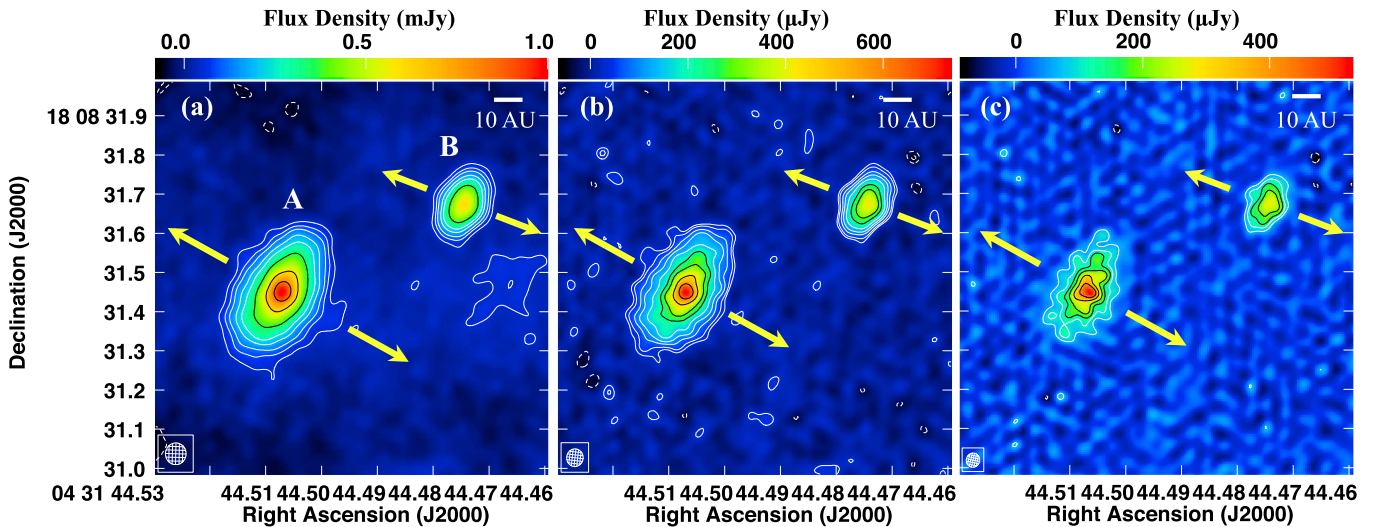


Figure 2. 7 mm images showing emission primarily from a pair of circumstellar dust disks in L1551NE made with (a) natural, (b) robust = 0.5, and (c) robust = -0.25 weighting of the data. Arrows indicate the position angles of ionized jets from sources A and B as derived by fitting a two-dimensional Gaussian to each source in Figure 1(b) (results listed in Table 2). Note the weak extension of source B along the direction of its ionized jet in all three panels. In panel (c), the central region of source A can be seen to be elongated along the direction of its ionized jet. Contour levels are plotted at $-4, 4, 7, 10, 15, 20, 30, 50, 70,$ and $90 \times \sigma$ (where $\sigma = 12 \mu\text{Jy beam}^{-1}$, the rms noise level) in panel (a), $-3, -2, 2, 3, 5, 7, 10, 20,$ and $25 \times \sigma$ ($\sigma = 15 \mu\text{Jy beam}^{-1}$) in panel (b), and $-3, 3, 5, 7, 10, 15,$ and $20 \times \sigma$ ($\sigma = 20 \mu\text{Jy beam}^{-1}$) in panel (c). The synthesized beam in each weighting scheme is indicated by the thatched ellipse at the lower left corner of each panel and has an FWHM of $55.4 \text{ mas} \times 52.5 \text{ mas}$ ($7.8 \text{ au} \times 7.4 \text{ au}$) and a position angle of $-1.20^\circ 36'$ in panel (a), $44.9 \text{ mas} \times 41.8 \text{ mas}$ ($6.3 \text{ au} \times 5.9 \text{ au}$) and a position angle of $-6^\circ 5'$ in panel (b), and $36.3 \text{ mas} \times 33.8 \text{ mas}$ ($5.1 \text{ au} \times 4.7 \text{ au}$) and a position angle of $-12^\circ 7'$ in panel (c).

from that of the same source in the 2002 map. Instead, in the 1994 map, the major axis of source A is aligned within measurement uncertainties to the major axis of the synthesized beam. Given that L1551NE was located close to the half-power point of the telescope primary beam in the 1994 observation and therefore subject to both bandwidth smearing and, perhaps even more detrimentally, telescope pointing errors, we place little weight on the measured source dimensions in this map.

3.2. Circumstellar Disks

Figure 2 show our images of L1551NE at 7 mm made with three different weightings, natural weighting that provides the lowest noise level but also the poorest angular resolution of $55.4 \text{ mas} \times 52.5 \text{ mas}$ or $7.8 \text{ au} \times 7.4 \text{ au}$ (Figure 2(a)), robust = 0.5 weighting that only slightly increases the noise level but significantly improves the angular resolution to $44.9 \text{ mas} \times 41.8 \text{ mas}$ or $6.3 \text{ au} \times 5.9 \text{ au}$ (Figure 2(b)), and robust = -0.25 weighting that provides close to the highest angular resolution possible with our data of $36.3 \text{ mas} \times 33.8 \text{ mas}$ or $5.1 \text{ au} \times 4.7 \text{ au}$ at the expense of a significantly higher noise level (Figure 2(c)). A simple visual inspection reveals that both sources A and B are clearly resolved along their major and minor axes. Source A is much larger and also has a higher peak and integrated flux density than source B. Both sources are elongated in a direction perpendicular to their ionized jets (indicated by arrows in Figure 2) as traced at 3.5 cm (Figure 1(b)), and so their emission must originate primarily from dust in their circumstellar disks. Emission from dust at larger spatial scales, namely, that in the circumbinary disk as imaged at 0.85 mm with Submillimeter Array (SMA; Takakuwa et al. 2012) and in follow-up observations also at 0.85 mm with the Atacama Large Millimeter and Submillimeter Array (ALMA; Takakuwa et al. 2014), as well as dust in the envelope around the circumbinary disk as imaged at 0.85 mm with the SMA (Takakuwa et al. 2013), is entirely resolved out in our observation (which has a much higher angular resolution and lacks

relatively short baselines, compared with the ALMA and SMA observations).

In all the maps shown in Figure 2, source B exhibits an appreciable elongation along the northeast to southwest direction that extends beyond, and is perpendicular to the major axis of, its main body. This elongation is aligned with its ionized jet, so that, at 7 mm, the emission of source B along its minor axis must include a weak contribution from free-free emission associated with its ionized jet. This situation is similar to that found for both components of L1551 IRS5 at 7 mm, where the emission from each source is contributed by both ionized gas and dust (Lim & Takakuwa 2006; Lim et al. 2016). In the highest angular resolution map at 7 mm shown in Figure 2(c), the central peak in source A can be seen to be elongated in a direction perpendicular to its main body and aligned instead with its ionized jet. Thus, at 7 mm, the emission from the central region of source A must also include a contribution from free-free emission associated with its ionized jet.

4. PHYSICAL PARAMETERS OF CIRCUMSTELLAR DISKS

Because, in the images at 7 mm, the emission from both sources includes a weak contribution from their ionized jets, we first tried to remove the jets before fitting models to the disks. Using the task IMFIT in AIPS, we started by attempting to fit a two-component (one to represent the jet and the other the disk), two-dimensional, Gaussian function to sources A and B individually in the naturally weighted map (which provides the highest signal-to-noise ratio and hence traces the circumstellar disks farthest out). All such attempts either failed to converge or provided nonphysical results (e.g., negative intensities for one of the components) for both sources. This failure is in sharp contrast to our success using the same strategy for L1551 IRS 5, where a two-component, two-dimensional, Gaussian function provided a satisfactory fit to

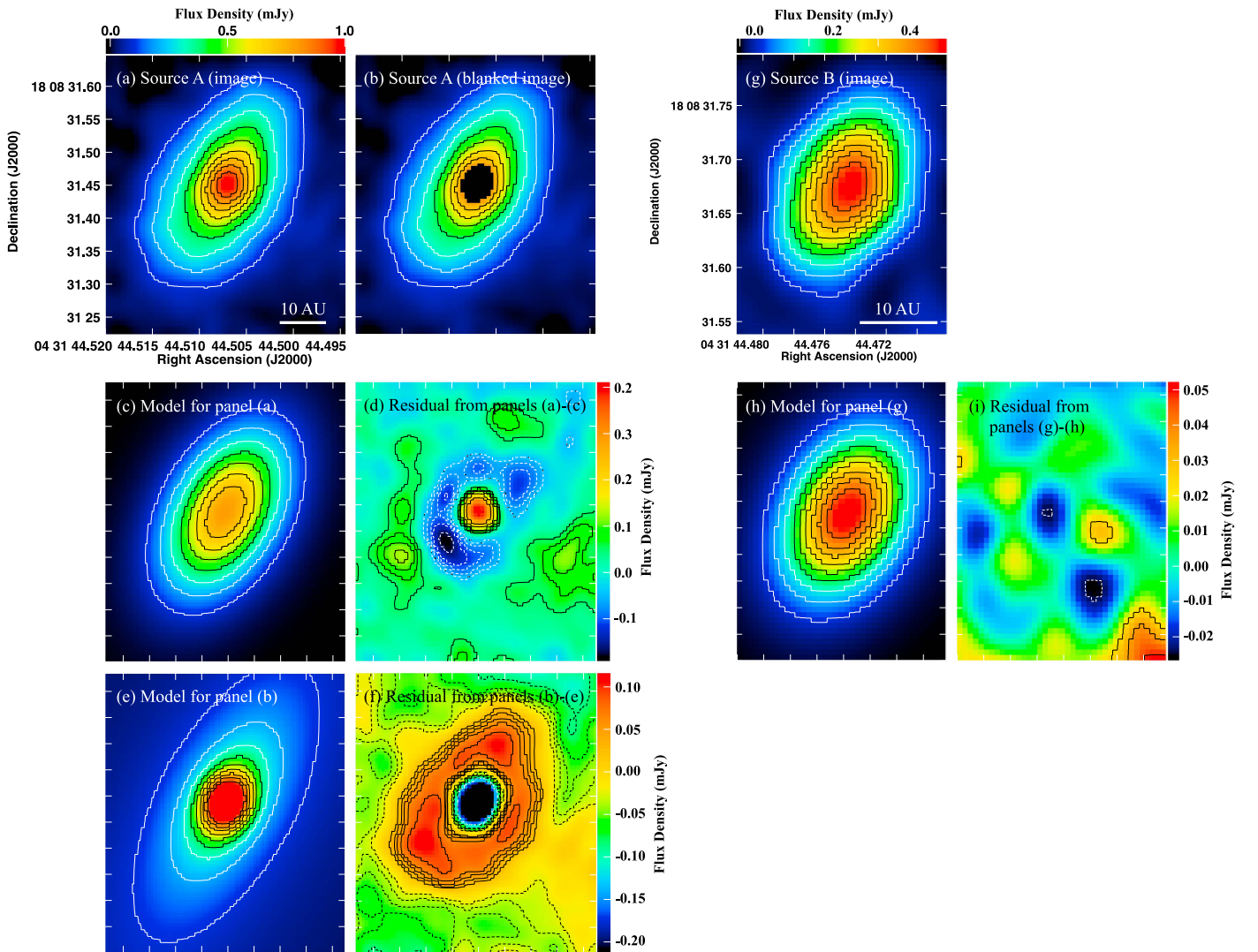


Figure 3. Two-dimensional Gaussian fits to the naturally weighted 7 mm images of (a) source A, (b) source A with its central region having a size of approximately the FWHM of the synthesized beam blanked out, and (g) source B. Panel (c) is the model fit to the unblanked image of source A in panel (a), and panel (d) the residuals (image – model). Panel (e) is the model fit to the centrally blanked image of source A in panel (b), and panel (f) the residuals. Panel (h) is the model fit to source B in panel (g), and panel (i) the residuals. Colors and contours in panels (c) and (e) are the same as in panels (a)–(b), where the contour levels are plotted at 10%, 20%, ..., and 90% of the peak intensity of source A, permitting a direct comparison between the model fits and the image of this source. Similarly, colors and contours in panels (h) are the same as in panel (g), where the contour levels are plotted at 10%, 20%, ..., and 90% of the peak intensity of source B, permitting a direct comparison between the model fit and the image of this source. Contour levels in residual maps plotted at $-10, -7, -5, -4, -3, -2, 2, 3, 5, 7,$ and $10 \times \sigma$ (where $\sigma = 12 \mu\text{Jy beam}^{-1}$, the rms noise level). Unlike the less well resolved image of source B, the much better resolved image of source A cannot be satisfactorily fit by a two-dimensional Gaussian function.

each of the two sources in this system at 7 mm (Lim et al. 2016). Below, we explain why such a model fails to fit the image of either source in L1551NE.

GALFIT, unlike IMFIT (in AIPS), does not try to fit for the (spatially unresolved) central region of a source within an area spanned by the FWHM of the synthesized beam. This feature is convenient for our purpose so as to mitigate the contribution from the ionized jet emanating from the center of each source. (The model fitted by GALFIT therefore makes no statement about the radial intensity profile within a central area spanned by the FWHM of the synthesized beam.) We therefore started by fitting a 2D Gaussian function (i.e., one component only, corresponding to the circumstellar disk) to source A in the naturally weighted map. Figure 3(c) shows the resulting best-fit model (reduced- $\chi^2 = 6.50$). This model can be directly compared with the image of source A shown in Figure 3(a),

where the contour levels are plotted at the same levels in flux density (from 10% to 90%, in steps of 10%, of the peak intensity of source A) and the colors span the same range in flux density (from the minimum to the maximum of the image shown in Figure 3(a)). Figure 3(d) shows the residuals (image – model) from the fit. The most prominent feature in the residual map is a strong central positive peak, encircled by a conspicuous negative ring and a fainter outer positive ring, indicating that a Gaussian function provides a poor fit to the circumstellar disk. As a check, we blanked different-sized areas at the center of source A and fitted a 2D Gaussian function to the remaining emission. Figure 3(b) shows an example where the central region of source A having a size of approximately the FWHM of the synthesized beam has been blanked out. The model fit of a 2D Gaussian function (reduced- $\chi^2 = 21.39$) is shown in Figure 3(e), and the residuals in Figure 3(f). The

residual map shows a negative ring around the central blanked area and a surrounding positive ring; the same pattern is seen no matter the size of the central area blanked out up to about twice the FWHM of the synthesized beam, the largest that we tried. Thus, the reason why a two-component, two-dimensional, Gaussian function fails to provide a satisfactory fit to source A is because its circumstellar disk simply does not have a Gaussian radial intensity profile.

Source B is, visually, much smaller and spanned by fewer resolution elements than source A. Unlike source A, source B can be satisfactorily fit (reduced- $\chi^2 = 1.15$) by a two-dimensional Gaussian function (corresponding to its circumstellar disk) as shown in Figure 3(h). The fitted Gaussian model can be directly compared with the image of source B shown in Figure 3(g), where the contour levels are plotted at the same levels in flux density (from 10% to 90%, in steps of 10%, of the peak intensity of source B) and the colors span the same range in flux density (from the minimum to the maximum of the image shown in Figure 3(g)). The residuals are shown in Figure 3(i), all of which are below 3σ within the detectable body of source B. Thus, the failure to fit a two-component, two-dimensional, Gaussian function to source B is because its jet is simply too weak to provide meaningful constraints.

The two-dimensional Gaussian function fitted to source B has an FWHM along its major axis of $0''.99$, roughly comparable to the values found by fitting two-dimensional Gaussian functions to the two circumstellar disks in L1551 IRS5 of $0''.122$ and $0''.092$ (see Table 2 of Lim et al. 2016). The maps used for these fits have a similar FWHM for their synthesized beams of about $0''.055$. On the other hand, the circumstellar disk of source A, which, as we show below, is over twice as large as that of source B, cannot be fit by a two-dimensional Gaussian function. Our ability to satisfactorily fit a two-dimensional Gaussian function to the circumstellar disk of source B, as well as to each of the two circumstellar disks in L1551 IRS5, is likely because their radial intensity profiles are dominated by their synthesized beams (which are Gaussian function) and not because these disks actually have Gaussian radial intensity profiles.

Physically motivated models (see brief review in Lim et al. 2016) such as power-law profiles, designed to mimic power-law surface density and temperature profiles, having an inner as well as an outer truncation radius or taper are usually fitted to images of circumstellar disks. Unlike optically revealed objects for which the spectral energy distributions in the near- to mid-infrared provide constraints on a central cavity in their circumstellar disks, no such constraints are possible for protostars. Conveniently, GALFIT does not attempt to fit for the centrally unresolved region where a cavity might be present. We started by fitting a two-dimensional power law, with no outer truncation, to sources A and B. Figure 4(c) shows the best fit of such a model (reduced- $\chi^2 = 25.16$) to the unblanked image of source A shown in Figures 4(a) and 4(d) shows the residuals. Figure 4(e) shows the corresponding model fit (reduced- $\chi^2 = 21.39$) and Figure 4(f) the residuals for the centrally blanked image of source A shown in Figure 4(b). In both cases, the residual map shows a negative central circular region or negative ring around the central blanked area and a surrounding positive ring, indicating that an untruncated two-dimensional power law provides a poor fit to the circumstellar disk of source A. The same is true for source B, where Figure 4(j) shows the fitted model (reduced- $\chi^2 = 10.97$) and Figure 4(k) the residuals. The residual map also shows a

negative central circular region and a surrounding positive ring, just like the residual map of source A shown in Figure 4(d).

Given that circumstellar disks in binary systems are predicted to be truncated by tidal interactions with their neighboring companions, we then tried fitting a two-dimensional power law that is truncated at an outer radius. Figure 4(g) shows the model fit and Figure 4(h) the residuals for the unblanked image of source A (Figure 4(a)). The fit is much improved (reduced- $\chi^2 = 3.58$, versus a reduced- $\chi^2 = 6.50$ for a two-dimensional Gaussian and a reduced- $\chi^2 = 25.16$ for a two-dimensional power law with no outer truncation) as reflected by the relatively weak residuals, although a faint negative ring is visible, indicating a systematic deviation between the fitted model and the image. Figure 4(l) shows the corresponding model fit and Figure 4(m) the residuals for the unblanked image of source B (Figure 4(i)). Once again, the fit is much improved (reduced- $\chi^2 = 1.16$) over an untruncated two-dimensional power law (reduced- $\chi^2 = 10.97$), although in the case of source B providing no better a fit than a two-dimensional Gaussian function (reduced- $\chi^2 = 1.15$).

In L1551 IRS5, a NUKER function, comprising a relatively shallow inner power law and a very steep outer power law (i.e., a tapered rather than a truncated profile), was fitted to the two circumstellar disks (Lim et al. 2016). This function provides a smooth transition between the inner and outer power laws, a feature that was deemed to be more physical than a discontinuous transition. The NUKER function is parameterized as

$$I(r) = I_b 2^{\frac{\beta-\gamma}{\alpha}} \left(\frac{r}{r_b}\right)^{-\gamma} \left[1 + \left(\frac{r}{r_b}\right)^\alpha\right]^{\frac{\gamma-\beta}{\alpha}}, \quad (1)$$

where $I(r)$ is the intensity, I , as a function of radius, r , γ is the inner power-law slope, β is the outer power-law slope, α controls the sharpness of the transition between the two power laws (larger α indicating a sharper transition), r_b is the break radius at which the slope is the average of β and γ or, equivalently, the radius of maximum curvature in logarithmic units, and I_b is the intensity at r_b . Just like for the two circumstellar disks in L1551 IRS5, we found the central position, inclination (as determined from the ratio in dimensions of the minor to major axes), and position angle of the major axis of sources A and B to be essentially constant independent of α . As α increases (i.e., the transition between the inner and outer power law becomes sharper), the break radius r_b decreases somewhat and very rapidly converges. Likewise, both γ (the inner power-law index) and β (the outer power-law index) also rapidly converge with increasing α , such that $\beta \gg \gamma$ irrespective of α .

Fixing therefore the central location, inclination, and position angle of each source, we list in Table 3 the other parameters of the best-fit NUKER function at the largest value of α for which a solution is obtainable. In this way, we obtained a break radius of $r_b \sim 133$ mas (~ 18.6 au) for source A. Figure 5(c) shows the model fit to the unblanked image of source A (Figure 5(a)), and Figure 5(d) shows the residuals. This fit (reduced- $\chi^2 = 2.25$) is, by far, the best among all those considered (versus a reduced- $\chi^2 = 6.50$ for a two-dimensional Gaussian, a reduced- $\chi^2 = 25.16$ for a two-dimensional power law with no outer truncation, and a reduced- $\chi^2 = 3.58$ for a

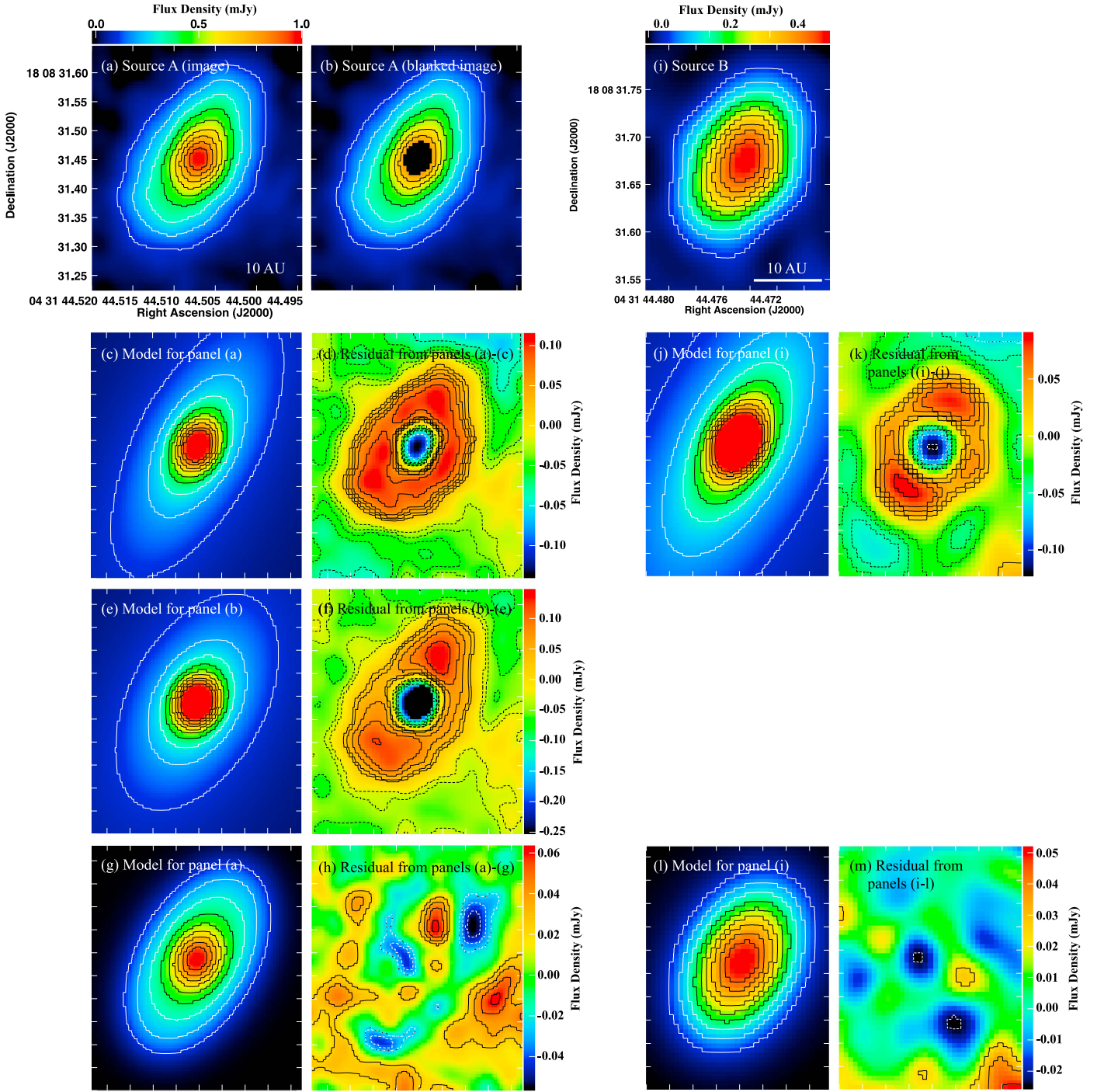


Figure 4. Same as in Figure 3, but now for two-dimensional power-law fits. Panel (c) is the model fit of a continuous power law to the unblanked image of source A in panel (a), and panel (d) the residuals (image-model). Panel (e) is the model fit of a continuous power law to the centrally blanked image of source A in panel (b), and panel (f) the residuals. Panel (g) is the model fit of a power law that is truncated at an outer radius to the unblanked image of source A, and panel (h) the residuals. Panel (j) is the model fit of a continuous power law to source B in panel (i), and panel (k) the residuals. Panel (l) is the model fit of a power law that is truncated at an outer radius to source B, and panel (m) the residuals. Colors and contours in panels (c), (e), and (g) are the same as in panels (a)–(b), where the contour levels are plotted at 10%, 20%, ..., and 90% of the peak intensity of source A, permitting a direct comparison between the model fits and the image of this source. Similarly, colors and contours in panels (j) and (l) are the same as in panel (i), where the contour levels are plotted at 10%, 20%, ..., and 90% of the peak intensity of source B, permitting a direct comparison between the model fits and the image of this source. Contour levels in residual maps plotted at -10 , -7 , -5 , -4 , -3 , -2 , 2 , 3 , 5 , 7 , and $10 \times \sigma$ (where $\sigma = 12 \mu\text{Jy beam}^{-1}$, the rms noise level). Both sources are poorly fit by a continuous power law, but quite well fit by a power law that is truncated at an outer radius.

two-dimensional power law truncated at an outer radius). Importantly, there are no clearly apparent systematic residuals indicating a systematic deviation between the fitted model and the image; nonetheless, there are low-level residuals in the

outer regions that limit the goodness of the fit. Fitting a NUKER function to the image of source A where its central region is blanked out (Figure 5(b)), we obtained an essentially identical model fit (reduced- $\chi^2 = 2.24$) as shown in Figure 5(e)

Table 3
Parameters of Circumstellar Disks

Source	Inclination (deg)	Position	α	γ	β	r_b	
		Angle Major Axis (deg)				(mas)	(au)
A	57.7	150.9	40.0	0.79	4.3	133.0	18.6
B	58.0	152.1	32.5	0.45	5.4	63.5	8.9

Note. NUKER fits to the naturally weighted images of sources A and B (Figure 2(a)) based on the largest value of α for which a solution is obtainable.

and residual map as shown in Figure 5(f). The position angle of the major axis thus derived for the circumstellar disk of source A is $\sim 150^\circ.9$, accurately orthogonal in projection to the position angle inferred for the axis of its ionized jet of $61^\circ_{-3}^{+4}$. The corresponding model fit for source B (reduced- $\chi^2 = 1.07$) is shown in Figure 5(h) and the residual map in Figure 5(i). As for source A, this model provides a superior fit (lower reduced- χ^2) to source B than a two-dimensional Gaussian (reduced- $\chi^2 = 1.15$), a power law with no outer truncation (reduced- $\chi^2 = 10.97$), or a power law truncated at an outer radius (reduced- $\chi^2 = 1.16$). The position angle of the major axis thus derived for the circumstellar disk of source B is $\sim 152^\circ.1$, closely orthogonal in projection to the position angle inferred for the axis of its ionized jet of $69^\circ_{-5}^{+4}$. Assuming both circumstellar disks to be circular and geometrically thin, the inclination derived for the circumstellar disk of source A is $\sim 57^\circ.7$ and that of source B is $\sim 58^\circ.0$. Their similar inclinations and position angles for their major axes imply that the two circumstellar disks are (closely) parallel.

GALFIT does not provide uncertainties for the model fitting parameters. As a measure of the uncertainties in the inclination and position angle for the circumstellar disk of source B, we also used IMFIT (which provides uncertainties in the model parameters) to fit a two-dimensional Gaussian function to this source. In this manner, we derived an inclination of $56^\circ.3 \pm 3^\circ.8$ deg (GALFIT reports $58^\circ.2$ for a two-dimensional Gaussian fit and $58^\circ.0$ for a NUKER fit) and a position angle of $154^\circ.5 \pm 4^\circ.6$ (GALFIT reports $152^\circ.2$ for a two-dimensional Gaussian fit and $152^\circ.1$ for a NUKER fit) for source B. With a position angle of $69^\circ_{-5}^{+4}$ for its ionized jet (Table 2), the circumstellar disk of source B is, within the uncertainties, orthogonal ($85^\circ.5 \pm 6^\circ.8$) in projection to its ionized jet. As mentioned earlier, source A cannot be fit by a two-dimensional Gaussian function, and so we cannot provide corresponding uncertainties for the inclination and position angle for its circumstellar disk using this method. Nevertheless, based on the exercise conducted for source B, the uncertainties in the inclination and position angle of the major axis derived from fitting a NUKER function to source A are probably no larger than a few degrees.

5. ORBITAL MOTION

The 1994 observation of Rodríguez et al. (1995) was the first to show that L1551NE comprises two sources, as was subsequently confirmed in the 2002 observation of Reipurth et al. (2002). To date, only these and our observation in 2012 provide useful measurements of the relative proper motion of the binary protostars. Table 4 lists the positions (repeated, for

convenience, from Table 2 for the 1994 and 2002 observations), relative separations, and relative orientations of the binary protostars on the aforementioned dates. The position for source B is derived from a two-dimensional Gaussian fit (using IMFIT) to the natural-weighted map of this source (as mentioned earlier, IMFIT reports uncertainties in the fitting parameters, unlike GALFIT) in Figure 2(a). The position of source A is derived from a two-dimensional Gaussian fit (also using IMFIT) to the ionized jet in the central region of this source in the robust = -0.25 image of Figure 2(c); the fitted Gaussian model shares a similar position angle ($67^\circ_{-4}^{+5}$) to that derived for the ionized jet at 3.5 cm ($61^\circ_{-3}^{+4}$), but is resolved also along the minor axes, suggesting a contribution from the circumstellar disk to the fit. Note that different secondary calibrators were used in the three observations of L1551NE, and so the positions listed in Table 4 are referenced with respect to a different position in the sky in each observation. The information listed in Table 4 should therefore be used with caution (i.e., the uncertainty in the position of the secondary calibrator needs to be included) for deriving the absolute proper motion of L1551NE (motion of the entire system across the sky).

Figure 6 shows the angular separation and orientation of source B with respect to source A over an interval spanning ~ 18.6 yr. As can be seen, there is no significant motion (i.e., difference in positions of $\geq 3\sigma$) of these two sources along the east–west direction, with their positions differing by $22.9 \text{ mas} \pm 14.6 \text{ mas}$ in right ascension between 2002 and 2012. On the other hand, between 2002 and 2012, source B has moved northward with respect to source A by $33.6 \text{ mas} \pm 11.0 \text{ mas}$ (a significance level of 3.1σ). Furthermore, source B is likely moving away (at a significance level of 2.5σ) from source A. The uncertainties in the measured source positions in 1994 are too large to detect any corresponding motion in source B between this and the later observations.

6. DISCUSSION

The circumstellar disks of the binary protostars in L1551NE are parallel to each other within measurement uncertainties of a few degrees. The close alignment between the circumstellar disks of binary protostars, however, does not by itself discriminate between different models for the formation of these systems. Even in those systems where the binary protostars are born with misaligned circumstellar disks, tidal interactions between the protostars can align their circumstellar disks with the orbital plane (Bate 2000; Lubow & Ogilvie 2000). In such situations, tidal interactions induce disk precession; viscosity in the disks acts on the shearing motion to dissipate energy, gradually aligning the disks with the orbital plane. Bate (2000) finds that such dissipative processes can align protostellar disks and their orbital plane on timescales of order 20 orbital periods, which for binary systems with a total mass of $\sim 1M_\odot$ and an orbital separation of ~ 100 au correspond to an interval of just $\sim 10^4$ yr. Instead, as pointed out by Lim et al. (2016) and demonstrated for the binary protostellar system L1551 IRS5, the geometrical and dynamical relationships between the binary system and its surrounding bulk envelope provide the crucial distinction between different fragmentation models.

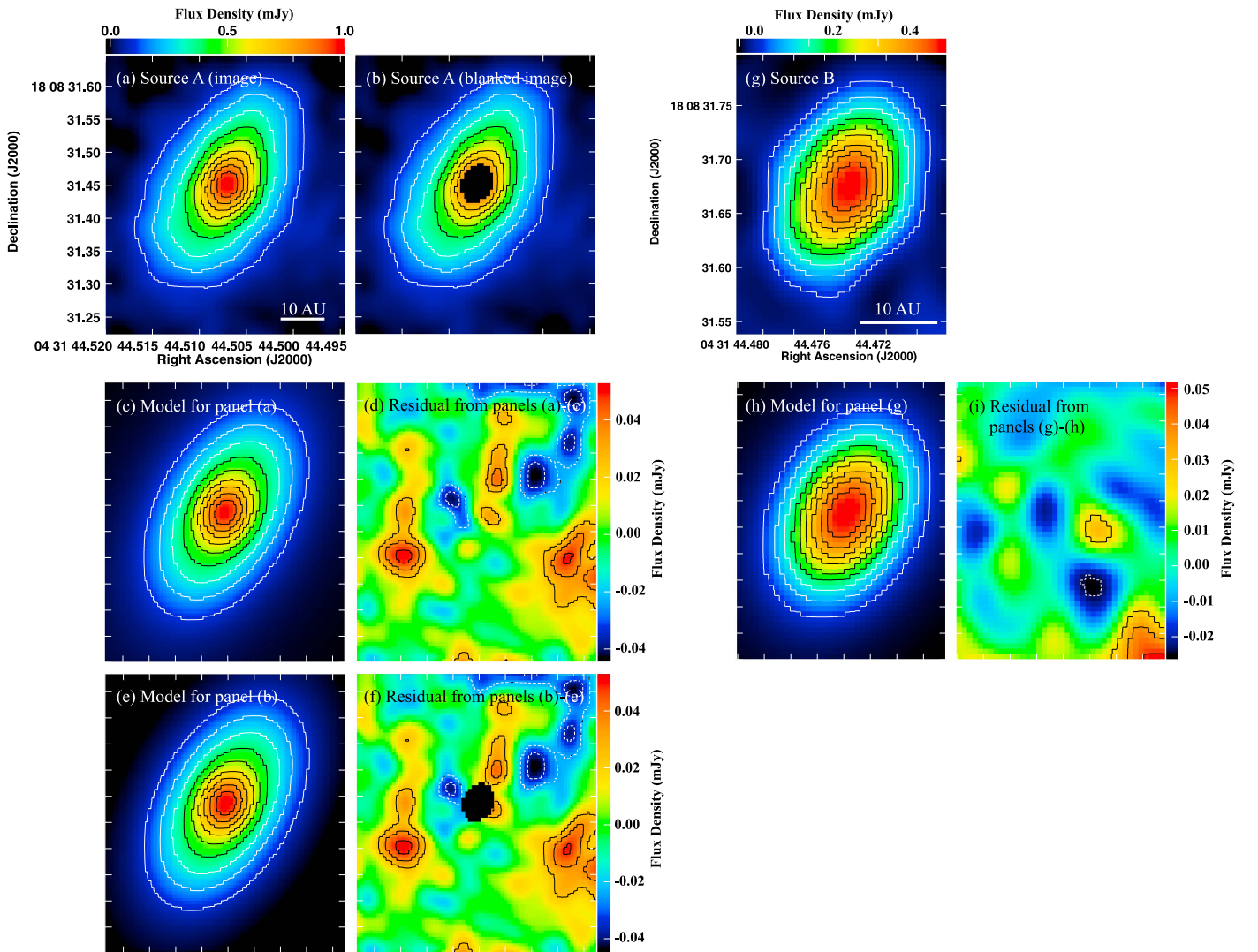


Figure 5. Same as in Figures 3 and 4, but now for two-dimensional NUKER (double power law with a smooth transition) fits. Panel (c) is the model fit to the unblanked image of source A in panel (a), and panel (d) the residuals (image – model). Panel (e) is the model fit to the centrally blanked image of source A in panel (b), and panel (f) the residuals. Panel (h) is the model fit to source B in panel (g), and panel (i) the residuals. Colors and contours in panels (c) and (e) are the same as in panels (a)–(b), where the contour levels are plotted at 10%, 20%, ..., and 90% of the peak intensity of source A, permitting a direct comparison between the model fits and the image of this source. Similarly, colors and contours in panels (h) are the same as in panel (g), where the contour levels are plotted at 10%, 20%, ..., and 90% of the peak intensity of source B, permitting a direct comparison between the model fit and the image of this source. Contour levels in residual maps plotted at $-10, -7, -5, -4, -3, -2, 2, 3, 5, 7, 10 \times \sigma$ (where $\sigma = 12 \mu\text{Jy beam}^{-1}$, the rms noise level). NUKER functions provide obviously better or statistically superior fits to both sources than either two-dimensional Gaussian (Figure 3) or single power-law (Figure 4) fits.

6.1. Relationship with Circumbinary Disk

Takakuwa et al. (2012) inferred the bulk properties of the circumbinary disk in L1551NE by fitting a circular and geometrically thin disk exhibiting Keplerian motion to channel maps in $\text{C}^{18}\text{O}(3-2)$ as measured with the SMA. This simple model reproduces the global velocity behavior of the circumbinary disk and provides best-fit parameters of $62^{\circ}_{-17^{\circ}}^{+25^{\circ}}$ for its inclination and $167^{\circ}_{-27^{\circ}}^{+23^{\circ}}$ for the position angle of its major axis.

In observations at a higher angular resolution and sensitivity with the ALMA, Takakuwa et al. (2014) found clear deviations from Keplerian rotation in the circumbinary disk as measured also in $\text{C}^{18}\text{O}(3-2)$. They were able to reproduce these deviations by including gravitational torques from the binary protostars, assumed to have a circular coplanar orbit, but otherwise retained the geometry inferred by Takakuwa et al.

(2012) for the circumbinary disk. Based on the angular separation of the two sources from the inferred dynamic center of the circumbinary disk, they found a binary mass ratio of $m_B/m_A = 0.19$, where m_A is the mass of the protostar corresponding to source A and m_B that corresponding to source B. From the measured orientation of sources A and B and the assumed circular coplanar orbit, Takakuwa et al. (2014) inferred an orbital separation of ~ 145 au for the binary system.

The inclination and position angle for the major axis of the circumbinary disk in the model proposed by Takakuwa et al. (2012) agree, to within their measurement uncertainties, with the corresponding values we derived for the circumstellar disks (Table 3). Although the uncertainties in these parameters for the circumbinary disk are much larger than the uncertainties in the corresponding parameters for the circumstellar disks, we note that their formal values agree to within $\sim 5^{\circ}$ in inclination and $\sim 15^{\circ}$ in position angle. Thus, the circumstellar disks are

Table 4
Relative Proper Motion

Year	Source	R.A. (J2000)	Decl. (J2000)	Δ (R.A.) (mas)	Δ (Decl.) (mas)	Separation (mas)	Position Angle (mas)
1994.89	A	04 ^h 31 ^m 44 ^s .4975±0.0038	+18°08′31″.90±0″.03				
	B	04 ^h 31 ^m 44 ^s .4625±0.0023	+18°08′32″.10±0″.02	−500.1 ± 62.9	200.0 ± 35.3	538.6 ± 59.9	291.8 ± 4.3
2002.30	A	04 ^h 31 ^m 44 ^s .49701±0.00048	+18°08′31″.673±0″.005				
	B	04 ^h 31 ^m 44 ^s .46643±0.00088	+18°08′31″.864±0″.009	−435.9 ± 14.4	191.1 ± 10.8	475.9 ± 13.9	293.7 ± 1.4
2012.91	A	04 ^h 31 ^m 44 ^s .506729±0.000053	+18°08′31″.4497±0″.0010				
	B	04 ^h 31 ^m 44 ^s .474554±0.000160	+18°08′31″.6744±0″.0015	−458.8 ± 2.4	224.7 ± 1.9	510.9 ± 2.3	296.1 ± 0.2

not only parallel with each other, but also closely (if not accurately) parallel with their surrounding circumbinary disk.

Assuming that the equatorial plane of the circumbinary disk is orthogonal to the outflow cavity so that its eastern side is the near side, Takakuwa et al. (2012, 2014) find that the circumbinary disk is rotating in an anticlockwise direction. For a coplanar binary system with a circular anticlockwise orbit, at their present orbital locations source B should be moving primarily northward and somewhat eastward with respect to source A, increasing in angular separation (see Figure 10 of Takakuwa et al. 2014). The northward motion and likely increasing separation that we measure for source B with respect to source A, but smaller (no detectable) motion along the east–west direction (Section 5), are therefore consistent with an orbital motion for the binary protostars in the same manner as the rotational motion of their surrounding circumbinary disk.

6.2. Binary Mass Ratio

If the binary protostars in L1551NE have a mass ratio of ~ 0.19 and are in a circular orbit separated by ~ 145 au as in the model described by Takakuwa et al. (2014), the circumstellar disk of source A is predicted to be tidally truncated at a radius of ~ 58.4 au and that of source B at a radius of ~ 23.5 au (derived from the calculations provided in Pichardo et al. 2005). By comparison, the inferred break radius (r_b) is ~ 18.6 au for the circumstellar disk of source A and ~ 8.9 au for the circumstellar disk of source B (Table 3), both a factor of ~ 3 smaller than their predicted tidally truncated radii. Equating their break radii with their tidally truncated radii, then for a circular orbit, the predicted binary mass ratio is ~ 0.23 and the orbital separation is ~ 47 au. The binary mass ratio (which, for a given orbital eccentricity, solely determines the tidally truncated sizes of their constituent circumstellar disks) thus inferred is closely comparable to that inferred by Takakuwa et al. (2014) of ~ 0.19 . In this case, however, the predicted orbital separation is much smaller than the observed angular separation between the binary components in L1551NE of 71.5 ± 0.4 au. Thus, the binary components of this system cannot simultaneously have a circular orbit and break radii for their circumstellar disks corresponding to their tidally truncated radii.

In L1551 IRS5, the relative proper motions of the binary protostars have been measured with sufficient precision to make an exploration of orbital solutions meaningful (Lim et al. 2016). For circular orbits with orbital separations of up to ~ 100 au, the (roughly comparable) break radii of the two circumstellar disks in this system can be closely comparable (somewhat smaller than) or at worse within a factor of ~ 2 of their predicted tidally truncated radii. Thus, either the circumstellar disks of the binary

protostars in both L1551 IRS5 and L1551NE do not extend to their tidally truncated radii, or observations at 7 mm do not trace the overall extents of these disks. Observations at shorter wavelengths, where the dust emissivity is larger and hence the dust emission stronger, may better define the overall extents of these circumstellar dust disks. Furthermore, such observations can reveal any dependence in disk sizes with wavelength, as has been found for the Class 0 source Per-emb-14 (also known as NGC 1333 IRAS 4C) and the pre-main-sequence (classical T Tauri) star AS 209. The circumstellar disk of Per-emb-14 is much smaller (by a factor of about three) at 8 mm (Segura-Cox et al. 2016) than at 1.3 mm (Tobin et al. 2015). Similarly, for AS 209, the measured size of its circumstellar disk decreases toward longer wavelengths, a behavior attributed to the radial drift of dust grains (Pérez et al. 2012). Alternatively, the orbit of both L1551 IRS5 and L1551NE may be highly eccentric, although Lim & Takakuwa (2006) found that even a moderate orbital eccentricity is highly unlikely in the case of L1551 IRS5.

6.3. Collimated Outflows

As mentioned in Section 3.1, Reipurth et al. (2000) argue that the apex of a cone-shaped reflection nebula—comprising an outflow cavity—associated with L1551NE is coincident with source B, and that the [Fe II] jet detected from L1551NE originates from source A. To be detectable in [Fe II], the jet from source A must have a higher density than that of source B at the same distance from their respective protostars (we rule out a much lower excitation for the jet from source B given that it, like the jet from source A, contains an ionized component detected in free–free emission at 3.5 cm). Thus, source A must have either a more powerful or a more highly collimated jet, or both (possibly related, perhaps indirectly, to the higher mass of this protostar and its larger circumstellar disk), than source B. A more highly collimated jet provides a natural explanation for why the reflection nebula has its axis passing through source B rather than source A; i.e., the walls of the outflow cavity are carved out by the poorly collimated jet from source B. A more highly collimated jet also produces stronger free–free emission than a more poorly collimated jet for the same mass-loss rate (Reyholds 1986), adding to the reasons why the ionized jet from source A is brighter than that from source B.

Other scenarios cannot be ruled out, but are not supported by the available evidence or contrived. For example, perhaps source B grew more quickly in mass (i.e., it experienced a higher accretion rate) and drove a stronger outflow than source A, thus dominating the creation of the observed outflow cavity. In that case, source B ought to be more massive than source A, in contradiction with the evidence presented above. Alternatively, the jet from source A only turned on recently, and we

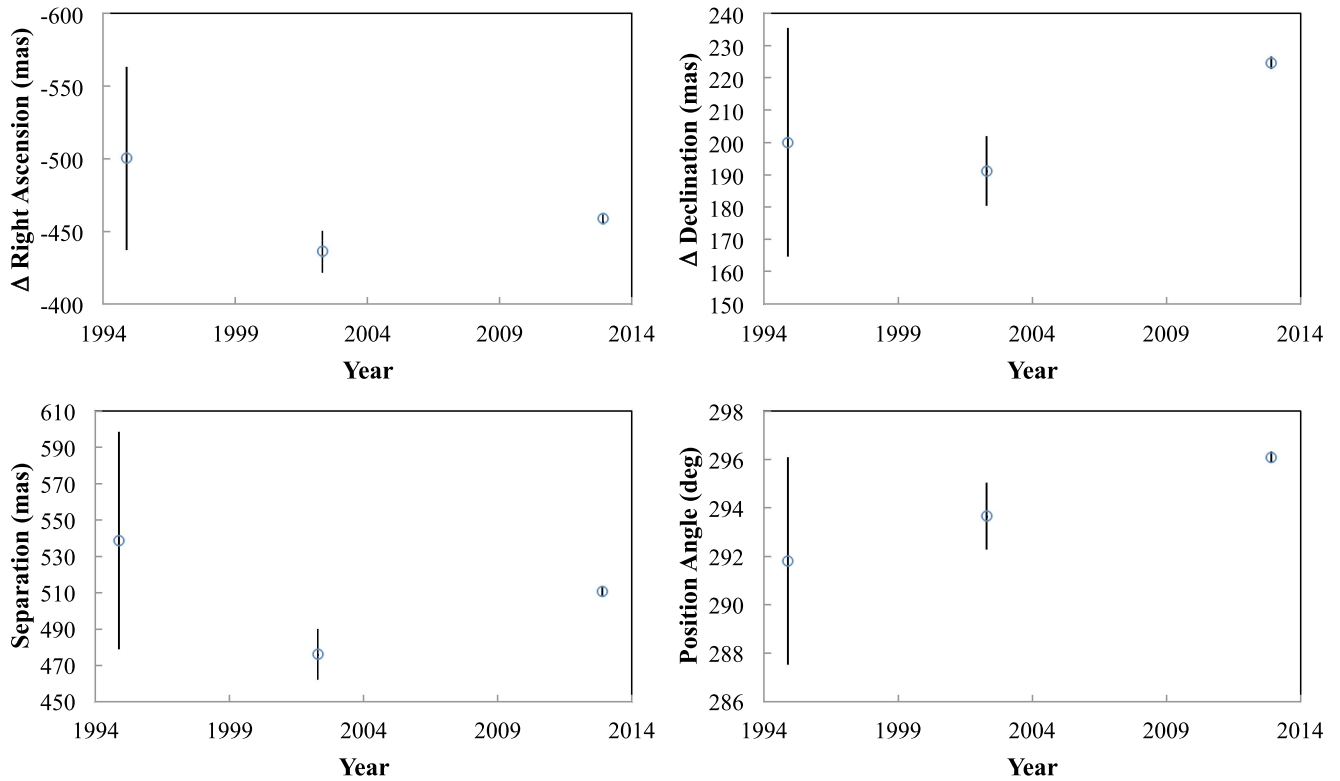


Figure 6. Angular separation and orientation of source B with respect to source A during the three observations reported in the text.

are fortunate to be observing L1551NE soon after this event, an unlikely situation.

6.4. Rotationally Driven Fragmentation of L1551NE Parental Core

Current models invoke either local (small-scale) turbulence in or the bulk (globally ordered) rotation of cores to drive fragmentation. In cores that have little or no bulk rotation, turbulence introduces velocity and density inhomogeneities that can seed and drive the growth of multiple density perturbations to become self-gravitating (e.g., Bate et al. 2002, 2003; Delgado-Donate et al. 2004a, 2004b; Goodwin et al. 2004a, 2004b, 2006; Bate & Bonnell 2005; Matsumoto et al. 2015). Multiple fragments produced in different turbulent cells are predicted to exhibit random orientations between the circumstellar disks of the binary components and no particular relationship between the circumstellar disks and surrounding circumbinary material. If multiple fragments are produced in a common region where turbulence conspires to create local angular momentum, however, the binary system thus assembled can exhibit quite well aligned circumstellar disks. Nevertheless, once again, the circumstellar disks should not bear any particular relationship with their surrounding circumbinary material.

Alternatively, the large-scale ordered rotation of the core can drive dynamical instabilities to induce fragmentation during collapse. In such models, conservation of angular momentum forces cores to become increasingly flattened as they collapse. As a result, a disequilibrium disk-like (i.e., flattened and rotating) structure forms at the center of the core. The central region of the core can become especially flattened if magnetic fields are invoked to direct infalling matter onto the midplane of the disk-like structure; the resulting structures closely resemble, at least morphologically, rotationally supported disks and are therefore

referred to as pseudodisks (Galli & Shu 1993a, 1993b). By introducing an initial density or velocity perturbation, the large-scale ordered rotation of the core can drive dynamical instabilities in the form of a spiral, bar, or ring in its central flattened region (Cha & Whitworth 2003; Matsumoto & Hanawa 2003; Machida et al. 2008). Fragments form in localized regions of the resulting dynamical instabilities that are gravitationally unstable (according to the Toomre criterion) and have masses exceeding the local Jeans mass. Binary protostellar systems that form through rotational fragmentation of disk-like structures should naturally exhibit a close alignment between the circumstellar disks of the binary components and the surrounding circumbinary material and share the same sense in orbital motion. Such a close alignment and similar sense in orbital motion is what we find for L1551NE, as found also by Lim et al. (2016) for L1551 IRS5, arguing for the formation of L1551NE through rotational fragmentation just like in the case of L1551 IRS5.

In L1551 IRS5, the circumstellar disks of the binary components have comparable sizes (break radii of 12.2 au and 10.4 au, respectively; Lim et al. 2016), suggesting that the binary protostars have comparable masses. In L1551NE, one protostar is about five times more massive than the other. Evidently, rotationally driven fragmentation can lead to binary protostellar systems having either very similar or very different component masses.

6.5. Fragmentation of L1551 Cloud

Intriguingly, the spin axes of both the L1551NE and L1551 IRS5 systems are closely oriented in space. Specifically, the circumstellar disks of the binary protostars in L1551 IRS5 have inclinations of $\sim 46^\circ$ and position angles for their major axes of $\sim 148^\circ$ (Lim et al. 2016), compared with the circumstellar disks of the binary protostars in L1551NE that

have inclinations of $\sim 58^\circ$ and position angles for their major axes of $\sim 151^\circ$ (Section 4). Despite the close spatial orientation of their spin axes, however, the two systems exhibit opposite senses in spins. Specifically, as observed from Earth, the two components of L1551NE are orbiting in an anticlockwise direction (Section 6.1), whereas the two components in L1551 IRS5 are orbiting in a clockwise direction (Lim & Takakuwa 2006; Lim et al. 2016).

In theoretical simulations, an initial density or velocity perturbation is imprinted onto rotating cores to facilitate fragmentation driven by dynamical instabilities. In molecular clouds, a ubiquitous source of perturbation is turbulence. Different turbulent cells may have been responsible for producing the parental cores of L1551NE and L1551 IRS5 and imparted on them opposite spins. If so, then the close alignment between the spin axes of these two binary protostellar systems is purely coincidental.

L1551NE and L1551 IRS5 make up one group of active star formation in the L1551 cloud. The other is the HL Tau group, which comprises HL Tau, XZ Tau, LkH α 358, and HH 30* (driving source of the Herbig-Haro object HH 30). HL Tau is classified as either a Class I object (protostar) or a Class II object (classical T Tauri star), and the others in the HL Tau group as Class II objects. The circumstellar disk of HL Tau has been very well resolved with ALMA. Based on a two-dimensional Gaussian fit to its image, ALMA Partnership et al. (2015) derive an inclination of 46.2 ± 0.2 and a position angle for its major axis of 138.2 ± 0.2 . The ionized jet from HL Tau has its major axis at a position angle of $\sim 51^\circ$ (Mundt et al. 1990; López et al. 1995; Moriarty-Schieven et al. 2006), closely orthogonal to the circumstellar disk of this object as projected onto the sky. Thus, surprisingly, the circumstellar disk of HL Tau also is closely aligned with the circumstellar disks of the binary protostars in L1551NE and L1551 IRS5.

The circumstellar disk of LkH α 358 has been resolved with ALMA. Based on a two-dimensional Gaussian fit to its image, ALMA Partnership et al. (2015) derive an inclination of $56^\circ \pm 2^\circ$ and a position angle for its major axis of $170^\circ \pm 3^\circ$. LkH α 358 does not exhibit any known jet. HH 30* is a suspected binary based on wiggles in its optical jet (Anglada et al. 2007). The circumbinary disk of this system has an inclination of $81^\circ \pm 2^\circ$ and a position angle for its major axis of $125^\circ \pm 1^\circ$ (Guilloteau et al. 2008). The ionized jet from HH 30* has its major axis at a position angle of $\sim 31^\circ$ (Mundt et al. 1990; López et al. 1995; Moriarty-Schieven et al. 2006), closely orthogonal to the circumbinary disk of this object as projected onto the sky. Although distributed over a wider range of angles, the circumstellar disk of LkH α 358 and the circumbinary disk of HH 30* do not appear to be randomly oriented with respect to, but instead are aligned to within a few tens of degrees of, the circumstellar disks of L1551NE, L1551 IRS5, and HL Tau. As a consequence, the outflows driven by all these objects, including the outflow from XZ Tau (Mundt et al. 1990; Krist et al. 1999; Moriarty-Schieven et al. 2006) (a binary system whose circumstellar disks have not been spatially resolved), are all oriented in the northeast-southwest direction as projected onto the sky.

If not for the counter-rotating spins of L1551NE and L1551 IRS5, it would have been natural to attribute the relatively close alignment between the spin axes of all the young stellar objects in the L1551 cloud to a large-scale ordered rotation of this cloud. Instead, we note that the spin

axes of all these objects are approximately orthogonal, in projection, to the major axis of the filament that composes the L1551 cloud (Lin et al. 2016, whose measurements provide no evidence for any ordered rotation of this cloud); the L1551 cloud filament is itself aligned with the overall elongation of filamentary structures that make up the Taurus molecular cloud complex (Mizuno et al. 1995; Goldsmith et al. 2006). The close alignment in the spin axes of all the young stellar objects in the L1551 cloud may therefore reflect (faster) infall and the subsequent formation of cores that are flattened along the major axis of the cloud filament. Local turbulence may have imparted angular momentum to individual cores, thus giving rise to opposite spins between some cores.

7. SUMMARY AND CONCLUSIONS

Using the VLA, we have fully resolved (i.e., along both their major and minor axes) the two circumstellar disks in the Class I binary protostellar system L1551NE. We also reanalyzed archival observations at 3.5 cm that resolve along their major axes the two ionized jets in this system. These observations span nearly 2 decades, allowing us to study the relative proper motion of the binary protostars. We found the following:

1. The stronger ionized jet of source A has a position angle for its major axis of 61_{-3}^{+4} , and the weaker ionized jet of source B a position angle for its major axis of 69_{-5}^{+4} . Both jets are therefore aligned, as projected onto the sky, to within the measurement uncertainties (difference in position angles of $8^\circ \pm 6^\circ$).
2. The circumstellar disk of source A is much larger than that of source B. The images of both circumstellar disks are better fit by a double power law that exhibits a smooth transition between the inner and outer power laws than a single power law that is abruptly truncated. A single, untruncated power law is explicitly rejected for the circumstellar disks of both sources, as is a Gaussian for the circumstellar disk of source A.
3. Although we find no unique solution for a double power-law fit to either circumstellar disk, the ratio of their major to minor axes and the position angle of their major axes do not depend on other parameters. Assuming implicitly that the circumstellar disks are intrinsically circular and geometrically thin, we find that the circumstellar disk of source A has an inclination of 57.7 and a position angle for its major axis of 150.9 , and the circumstellar disk of source B has an inclination of 58.0 and a position angle for its major axis of 152.1 . With estimated uncertainties in these parameters of a few degrees, the two circumstellar disks are closely aligned if not parallel. Furthermore, the two circumstellar disks are accurately orthogonal in projection to their respective ionized jets.
4. For the sharpest transition between the inner and outer power laws as might be expected of tidally truncated disks, the radius of maximum curvature in this transition is ~ 18.6 au for the circumstellar disk of source A and ~ 8.9 au for the circumstellar disk of source B. Equating these transition radii with their theoretically predicted tidally truncated radii, then, for a circular orbit, the ratio in disk sizes implies a binary mass ratio of ~ 0.23 . This binary mass ratio is closely comparable with that inferred by Takakuwa et al. (2014) of ~ 0.19 based on the projected angular separation between each protostar and

the inferred kinematic center of the circumbinary disk. Given the projected angular separation between the two protostars, however, the transition radii of both circumstellar disks are at least a factor of ~ 1.5 times smaller than their predicted tidally truncated radii if the system has a binary mass ratio of ~ 0.2 and a circular orbit.

- Over an interval of 10 yr, source B has moved northward (at a significance level of 3.1σ) with respect to source A. By contrast, there is no detectable motion of these two sources along the east–west direction (significance level of only 1.6σ). Furthermore, source B is likely moving away (at a significance level of 2.5σ) from source A. All these measurements agree with the model proposed by Takakuwa et al. (2014) for the relative orientation of the two protostars at their inferred orbital locations for an anticlockwise and circular orbital motion.

The two circumstellar disks are closely aligned if not parallel not just with each other but also with their surrounding circumbinary disk, which has an inclination of 62_{-17}^{+25} ° and a position angle for its major axis of 167_{-27}^{+23} °. Furthermore, the two protostars appear to be orbiting each other in the same direction as the rotation of their circumbinary disk. Both the circumstellar and circumbinary disks, as well as the orbit, of this binary system therefore share the same axes for their angular momenta, indicating that L1551NE formed through the rotationally driven fragmentation of its parental core, as is the case for L1551 IRS5 (Lim et al. 2016). By contrast with L1551NE, where the two circumstellar disks have different sizes and their binary protostars different masses, the two circumstellar disks in L1551 IRS5 have roughly comparable sizes, suggesting that their binary protostars have comparable masses (for a given orbital eccentricity, the truncation radii of circumstellar disks in binary systems depend only on the binary mass ratio). Rotationally driven fragmentation can therefore lead to binary systems having comparable or very different component masses.

Finally, we pointed out that the circumstellar disks of the binary protostars in both L1551NE and L1551 IRS5, along with their circumbinary disks or flattened circumbinary envelopes, are closely oriented in space (i.e., similar inclinations, as well as position angles for their major axes). Indeed, all the young stellar objects in the L1551 cloud, including HL Tau, LkH α 358, HH30*, and probably also XZ Tau, have spin axes that are approximately orthogonal in projection to the major axis of the filament that makes up the L1551 cloud, which itself is aligned with the major axes of the filamentary structures that make up the Taurus molecular cloud complex. This alignment may reflect (faster) infall along and the subsequent formation of cores that are flattened across the minor axes of these filaments. Local turbulence may have imparted angular momentum to individual cores, thus giving rise to opposite spins between some cores.

We thank the anonymous referee for constructive suggestions to improve the readability of the manuscript. J.L. acknowledges support from the Research Grants Council of Hong Kong through

grants HKU 703512P and 17305115. Both T.H. and T.M. acknowledge the Japan Society for the Promotion of Science (JSPS) Grants-in-Aid for Scientific Research (KAKENHI) through, respectively, grant Nos. JP15K05017 and 26400233.

Facility: VLA.

Softwares: CASA, AIPS, GALFIT.

REFERENCES

- ALMA Partnership et al. 2015, *ApJL*, **808**, L3
 Anglada, G., López, R., Estallela, R., et al. 2007, *AJ*, **133**, 2799
 Bate, M. R. 2000, *MNRAS*, **314**, 33
 Bate, M. R., & Bonnell, I. A. 2005, *MNRAS*, **356**, 1201
 Bate, M. R., Bonnell, I. A., & Bromm, V. 2002, *MNRAS*, **332**, L65
 Bate, M. R., Bonnell, I. A., & Bromm, V. 2003, *MNRAS*, **339**, 577
 Bertout, C., Robichon, N., & Arenou, F. 1999, *A&A*, **352**, 574
 Cha, S.-H., & Whitworth, A. P. 2003, *MNRAS*, **340**, 91
 Delgado-Donate, E. J., Clarke, C. J., & Bate, M. R. 2004a, *MNRAS*, **347**, 759
 Delgado-Donate, E. J., Clarke, C. J., Bate, M. R., & Hodgkin, S. T. 2004b, *MNRAS*, **351**, 617
 Galli, D., & Shu, F. H. 1993a, *ApJ*, **417**, 220
 Galli, D., & Shu, F. H. 1993b, *ApJ*, **417**, 243
 Goldsmith, P. F., Heyer, M., Narayanan, G., et al. 2006, *ApJ*, **680**, 428
 Goodwin, S. P., Kroupa, P., Goodman, A., & Burkert, A. 2007, in *Protostars and Planets V*, ed. B. Reipurth, D. Jewitt, & K. Keil (Tucson, AZ: Univ. Arizona Press), 133
 Goodwin, S. P., Whitworth, A. P., & Ward-Thompson, D. 2004a, *A&A*, **414**, 633
 Goodwin, S. P., Whitworth, A. P., & Ward-Thompson, D. 2004b, *A&A*, **423**, 169
 Goodwin, S. P., Whitworth, A. P., & Ward-Thompson, D. 2006, *A&A*, **452**, 487
 Guilloteau, S., Dutrey, A., Pety, J., & Gueth, F. 2008, *A&A*, **478**, L31
 Hayashi, M., & Pyo, T.-S. 2009, *ApJ*, **694**, 582
 Kenyon, S. J., Dobrzycka, D., & Hartmann, L. 1994, *AJ*, **108**, 1872
 Krist, J. E., Stapelfeldt, K. R., Burrows, C. J., et al. 1999, *ApJL*, **515**, L35
 Lim, J., & Takakuwa, S. 2006, *ApJ*, **653**, 425
 Lim, J., Yeung, P. K. H., Hanawa, T., et al. 2016, *ApJ*, **826**, 153
 Lin, J., et al. 2016, *ApJ*, **826**, 193
 López, R., Raga, A., Riera, A., Anglada, G., & Estallela, R. 1995, *MNRAS*, **274**, L19
 Lubow, S. H., & Ogilvie, G. I. 2000, *ApJ*, **538**, 326
 Machida, M. N., Tomisaka, K., Matsumoto, T., & Inutsuka, S. 2008, *ApJ*, **677**, 327
 Matsumoto, T., & Hanawa, T. 2003, *ApJ*, **595**, 913
 Matsumoto, T., Onishi, T., Tokuda, K., & Inutsuka, S. 2015, *MNRAS*, **449**, L123
 Mizuno, A., Onishi, T., Yonekura, Y., et al. 1995, *ApJL*, **445**, L161
 Moriarty-Schieven, G. H., Johnstone, D., Bally, J., & Jenness, T. 2006, *ApJ*, **645**, 357
 Moriarty-Schieven, G. H., Powers, J. A., Butner, H. M., Wannier, P. G., & Keene, J. 2000, *ApJL*, **533**, L143
 Mundt, R., Ray, T. P., Bührke, T., Raga, A. C., & If, J. 1990, *A&A*, **232**, 37
 Peng, C. Y., Ho, L. C., Impey, C. D., & Rix, H.-W. 2002, *AJ*, **124**, 266
 Peng, C. Y., Ho, L. C., Impey, C. D., & Rix, H.-W. 2010, *AJ*, **139**, 2097
 Pérez, L. M., Carpenter, J. M., Chandler, C. J., et al. 2012, *ApJL*, **760**, L17
 Pichardo, B., Sparke, L. S., & Aguilar, L. A. 2005, *MNRAS*, **359**, 521
 Reipurth, B., Chan, K. C., Heathcote, S., Bally, J., & Rodríguez, L. F. 2000, *AJ*, **120**, 1449
 Reipurth, B., Rodríguez, L. F., Anglada, G., & Bally, J. 2002, *AJ*, **124**, 1054
 Reynolds, S. P. 1986, *ApJ*, **304**, 713
 Rodríguez, L. F., Anglada, G., & Raga, A. 1995, *ApJL*, **454**, L149
 Segura-Cox, D. M., Harris, R. J., Tobin, J. J., et al. 2016, *ApJL*, **817**, L14
 Takakuwa, S., Saito, M., Lim, J., et al. 2012, *ApJ*, **754**, 52
 Takakuwa, S., Saito, M., Lim, J., & Saigo, K. 2013, *ApJ*, **776**, 51
 Takakuwa, S., Saito, M., Saigo, K., et al. 2014, *ApJ*, **776**, 51
 Tobin, J., Looney, L. W., Wilner, D. J., et al. 2015, *ApJ*, **805**, 125