



*C. Perales-Raya, J.G. González-Lorenzo, A. Jurado-Ruzafa, S. Jiménez-Navarro, C. Acosta-Díaz, N. Villegas, B. Sotillo, J. González-Jiménez, M. González-Porto, E. Hernández-Rodríguez*

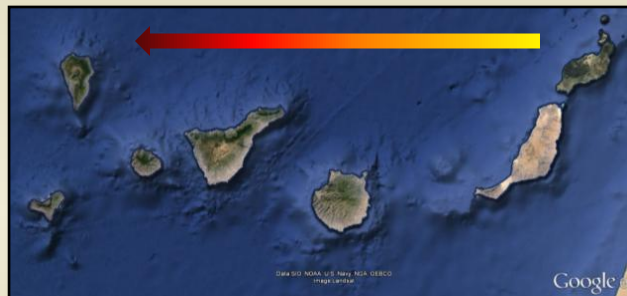
# DEMERSAL STOCKS FISHED BY THE ARTISANAL FLEET IN CANARY ISLANDS



*FAO/CECAF Working Group on the Assessment  
of Demersal Resources - Subgroup North*



# The Canary Islands and the demersal resources



Mean values 2013-2016

Landings (tons)	Effort (fishing days)	Vessels
1046	28643	337

- Location: approx. 100km off African coast (29°-27°N, 19°-13°W)
- Seven volcanic islands: narrow insular shelf
- Oceanic waters transported by Canary Current: oligotrophic and influenced by African upwelling
- Soft east-west gradient of increasing T<sup>a</sup> & Salinity
- High number of demersal species: parrotfish, sparids, morays, shrimps, amberjacks, groupers...
- The fishery: Artisanal **MULTI-GEAR** and **MULTI-SPECIES**. Vessels under “small-gear” licences conducting daily trips
- Since 2015: IEO monitors the fishery through **EU-Data Collection Framework**

# The fleet



- Polyvalent and opportunistic alternation with pelagic species
- Fleet selection for monitoring:

Step 1 – Demersal species  $\geq$  **20 trips**/year and  $\geq$  **100 kg**/year

Step 2 – Vessels with  $\geq$  **60%** of trips/year capturing demersal species

“Expert” criterion to move specific vessels that remains in the limit

## Mean characteristics 2015-2016



Length interval	number of vessels	GRT (t)	Length (m)	Power (hp)
< 10 m	299	3	7	29
10 – 12 m	22	8	11	72
> 12 m	12	13	13	81



# Target species



*Sparisoma cretense*



*Pagrus spp*



*Seriola spp*



Muraenidae



*Beryx spp*

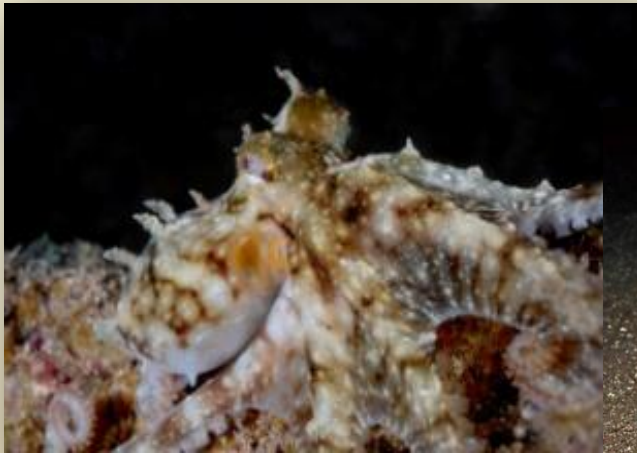


*Dentex spp*

# Target species



*Plesionika* spp



*Cephalopods*

## Other Sparidae



# Fishing gears - TRAPS

## Traps for fish



*Sparisoma cretense*, *Mullus surmuletus*, *Sparidae* (*Dentex gibbosus*, *Sarpa salpa*, *Diplodus* spp, *Lithognathus mormyrus*, *Pagellus erythrinus*, *Pagrus pagrus*), **other fish and invertebrates** (crabs, *O. vulgaris*)



## Traps for shrimps



*Plesionika narval*, *Plesionika edwardsii*, **fish and invertebrates** (*Muraenidae*, *Octopus vulgaris*)



## Traps for morays



*Muraena* spp, *Gymnothorax* spp



# HOOKS and LINES

## Hand lines

*Phycis phycis*, *Mora moro*, *Beryx* spp, Serranidae (*Epinephelus* spp, *Mycteroperca fusca*, *Serranus atricauda*, *S. cabrilla*), *Polyprion americanus*, *Seriola* spp, *Dentex* spp, *Pagrus* spp.



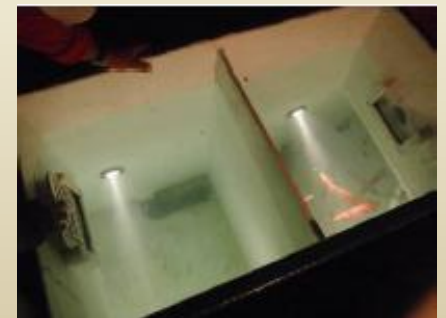
## Long lines

*Merluccius merluccius*, *Phycis phycis*, *Mora moro*, *Beryx* spp  
*Polyprion americanus*, *Scorpaenidae*, *Polymixia nobilis*, *Conger conger*, *Schedophilus ovalis* ...



## Jigging lines

*Loligo vulgaris*, *L. forbesi*, *Sthenoteuthis pteropus*, *Illex coindetii*, *Todarodes sagittatus*, *Ommastrephes bartrami*



# NETS



## **GILLNETS: trammel nets/set gillnets**

*Mullus surmuletus*, *Sparisoma cretense*,  
*Chelon labrosus*, *Sarpa salpa*, *Diplodus*  
*sargus*, *Mustelus spp* and other coastal  
fish



## **LIFTNETS: portable liftnets**

*Sparisoma cretense*, *Boops*  
*boops*, *Thalassoma pavo* and  
other coastal fish

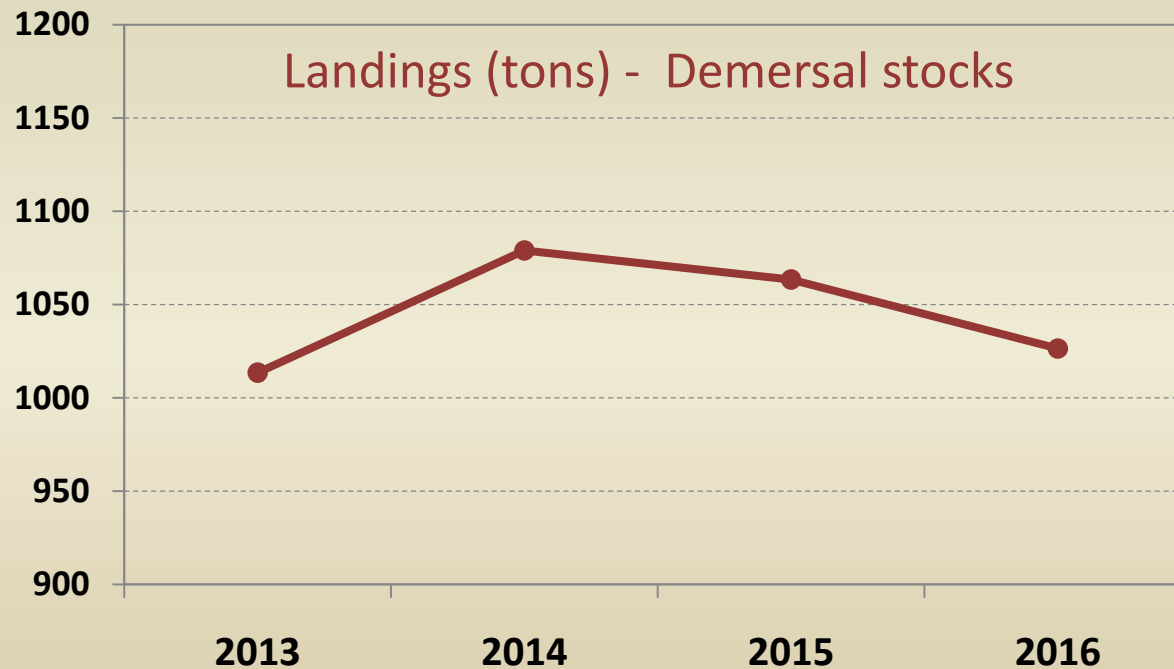




# Total-catch trends 2013-2016



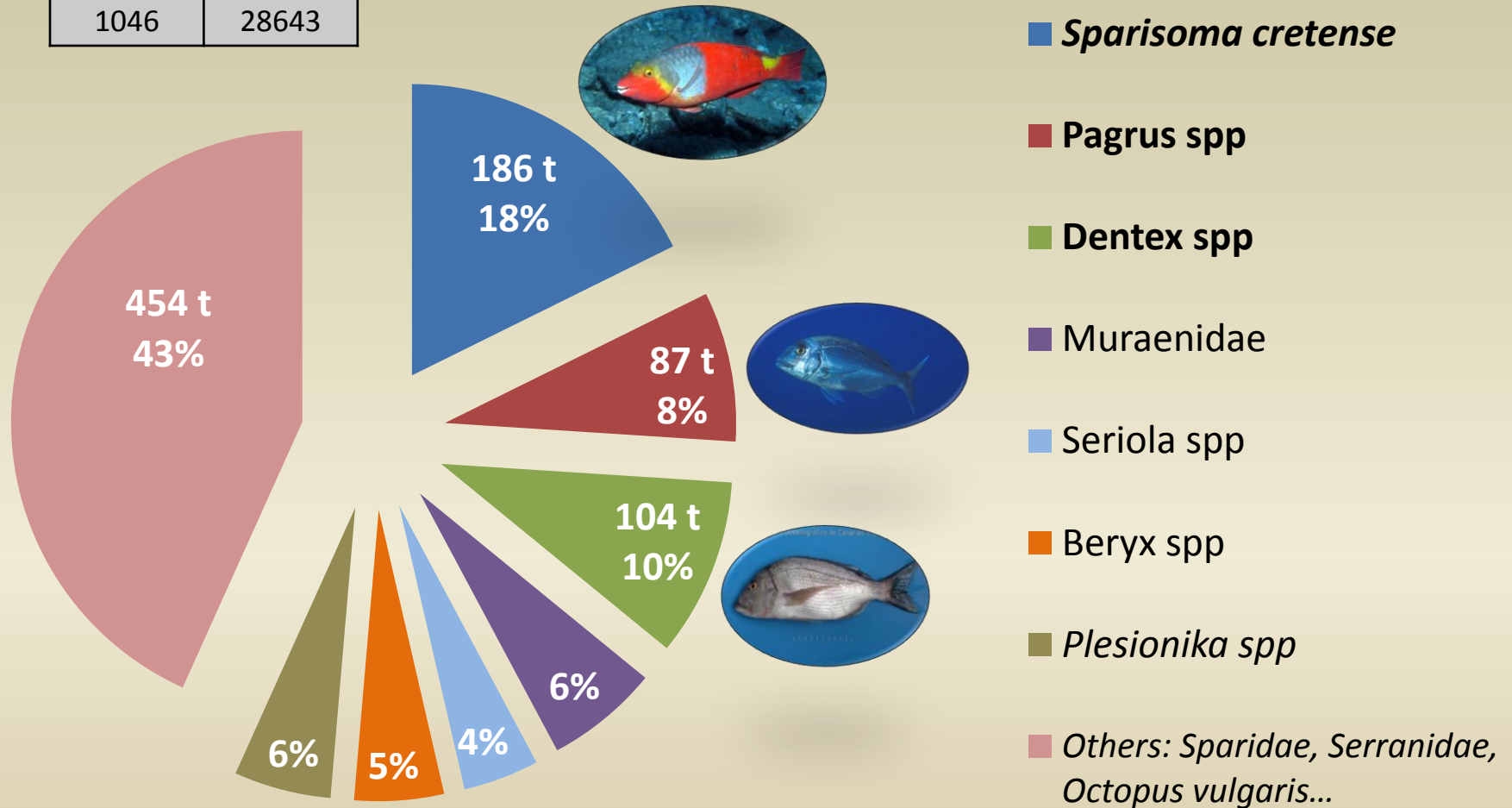
- Official Statistics: Sale Notes SGPM. Higher reliability from 2013
- Not total values due to the **polyvalence** of the fleet
  - Coverage of selected vessels for monitoring: 83% landings; 90% effort
  - **S. cretense**: 92% landings; 94% effort

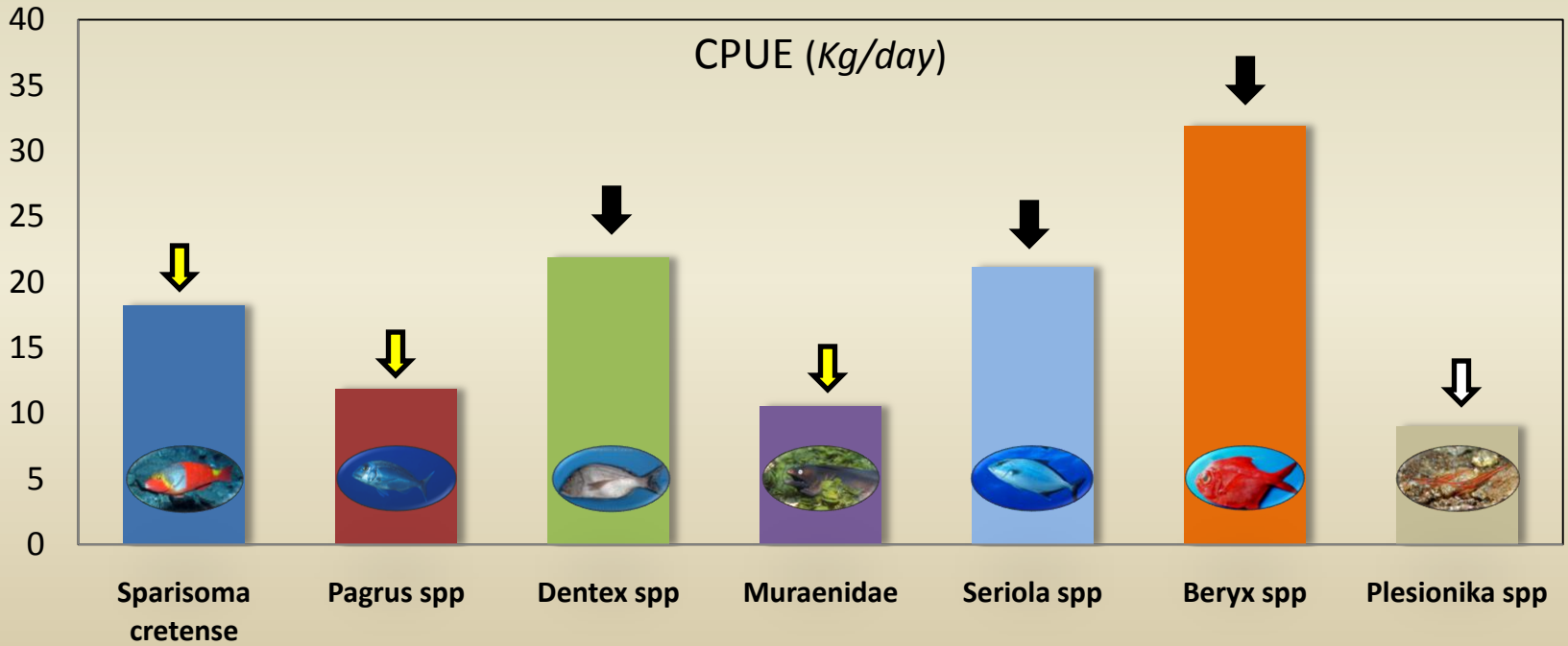
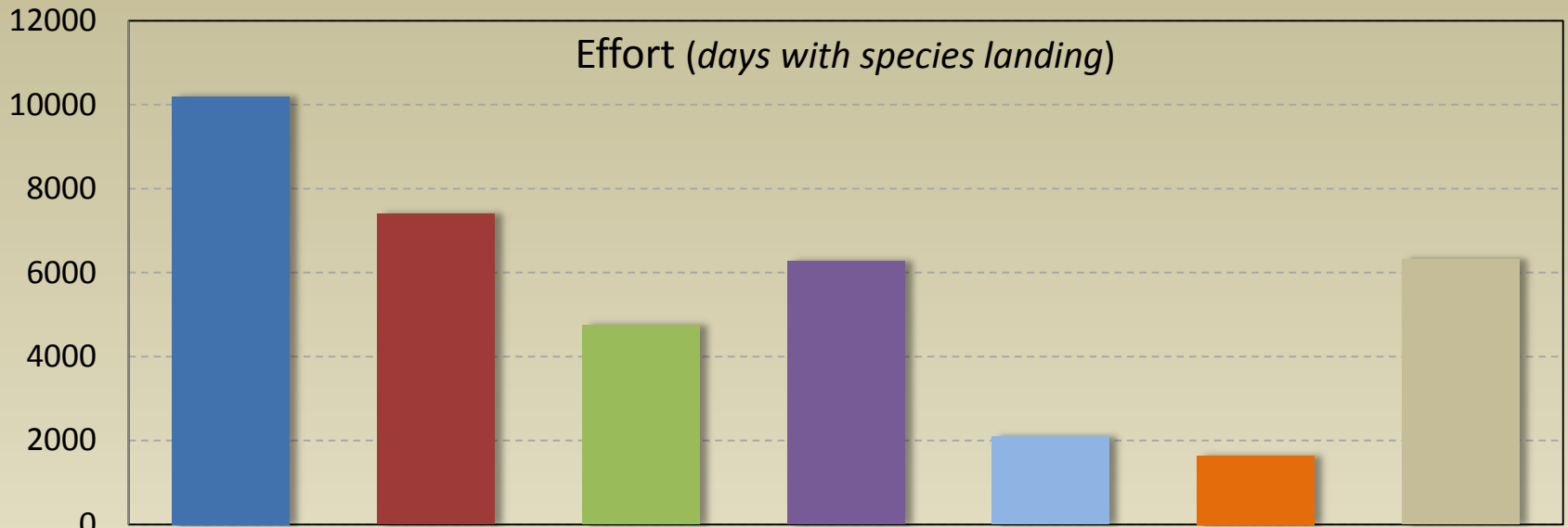


# Mean data by species (2013-2016)

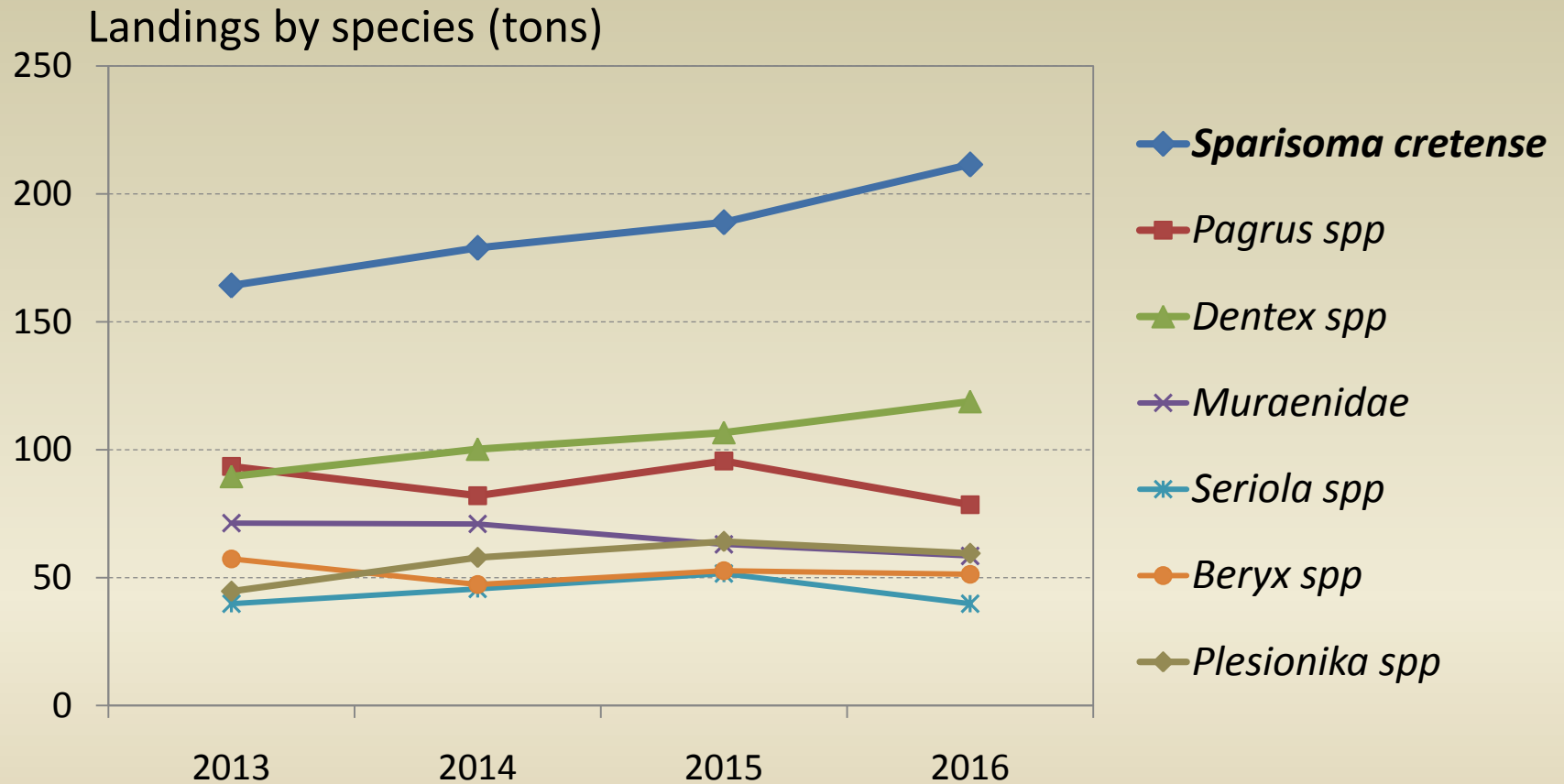


Catch (tons/year)	Effort (days/year)
1046	28643





# Catch trends: 2013-2016



# Monitoring at IEO

- Length sampling at market:  
RIM-IEO net in 21 landing sites
- Since 2015: **EU-DCF sampling at sea** by a program of scientific observers in TENERIFE



The highest percentage of vessels and fishing days (31%) of Canaries  
-data 2016-

- 2-3 monthly samplings covering **North**, **Northeast** and **South**:  
length of all catches (**retained** and **discards**)
- Fishing activity  
(fishing areas, fishing strategy...)



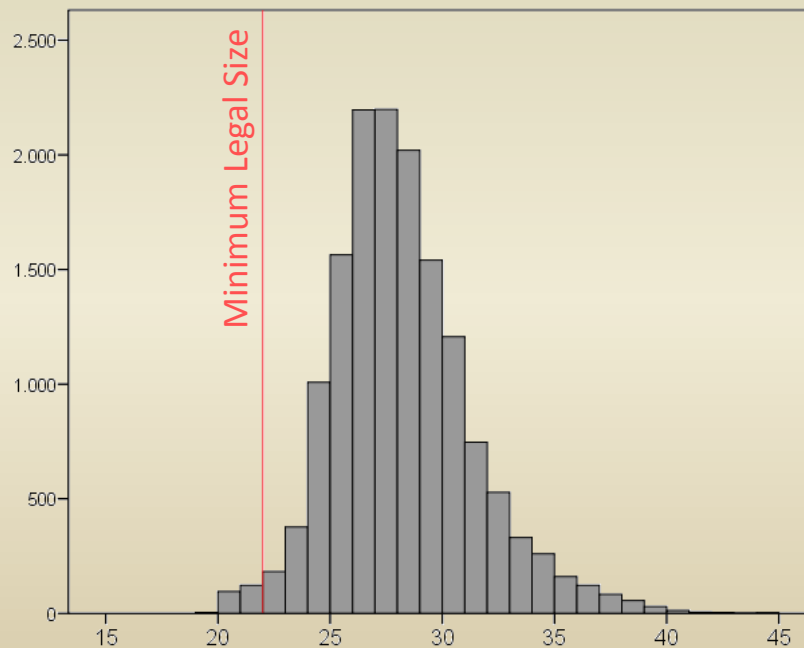
# Length distributions *Sparisoma cretense*



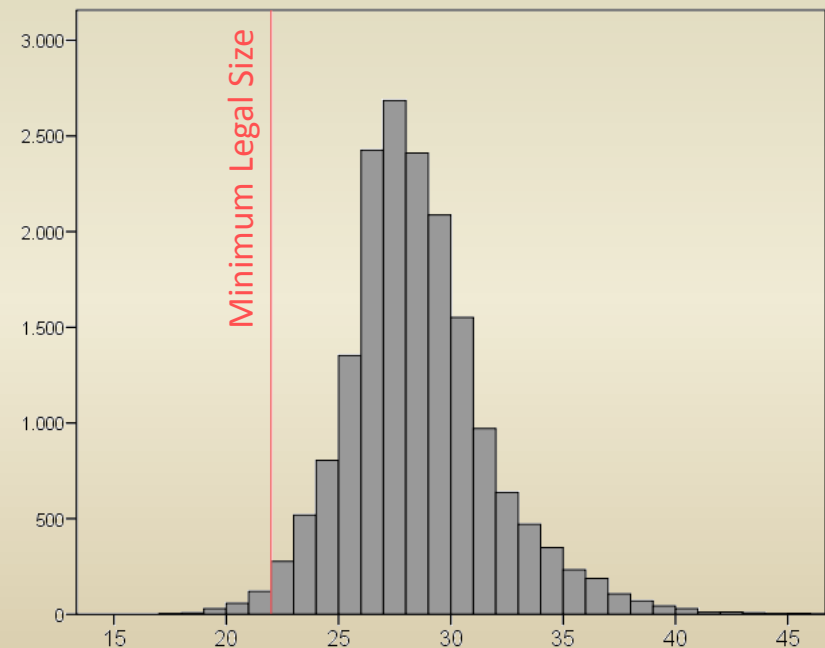
- Since 2015: length sampling **at market** (RIM-IEO) and also **at sea** by scientific observers (UE-DCF)



2015



2016





- **Catch and effort data of the main stocks from 2013 onwards ¿WHICH STOCKS?**
- **Length distribution of *Sparisoma cretense* from 2015 onwards**
- **To provide these data for the next data call of the Working Group**



Thanks for your attention  
*Merci votre attention*



GOBIERNO  
DE ESPAÑA

MINISTERIO  
DE ECONOMÍA, INDUSTRIA  
Y COMPETITIVIDAD

*Funded by Spanish Government and  
EU-Data Collection Framework*

