



Strathprints Institutional Repository

Murphy, Gavin Bruce and Khalid, Yousaf Ali and Counsell, John (2011) *A simplified dynamic systems approach for the energy rating of dwellings*. In: Building Simulation 2011 Conference, BS2011, 2011-11-14 - 2011-11-16, Sydney.

Strathprints is designed to allow users to access the research output of the University of Strathclyde. Copyright © and Moral Rights for the papers on this site are retained by the individual authors and/or other copyright owners. You may not engage in further distribution of the material for any profitmaking activities or any commercial gain. You may freely distribute both the url (<http://strathprints.strath.ac.uk/>) and the content of this paper for research or study, educational, or not-for-profit purposes without prior permission or charge.

Any correspondence concerning this service should be sent to Strathprints administrator: <mailto:strathprints@strath.ac.uk>

A SIMPLIFIED DYNAMIC SYSTEMS APPROACH FOR THE ENERGY RATING OF DWELLINGS

Murphy G B¹, Khalid Y¹, and Counsell J¹
¹BRE Centre of Excellence in Energy Utilisation,
Department of Mechanical Engineering,
University of Strathclyde,
Glasgow, Scotland

ABSTRACT

The drive to reduce carbon emissions and energy utilisation, directly associated with dwellings and to achieve a zero carbon home, suggests that the assessment of energy ratings will have an increasingly prioritised role in the built environment. Created by the Building Research Establishment (BRE), the Standard Assessment Procedure (SAP) is the UK Government's recommended method of assessing the energy ratings of dwellings. This paper describes a new, simplified dynamic method (hence known as IDEAS – Inverse Dynamics based Energy Analysis and Simulation) of assessing the controllability of a building and its servicing systems. The IDEAS method produces SAP Comparable results. Results suggest this design approach could enhance the SAP Methodology by the addition of advanced systems controllability and dynamic values.

INTRODUCTION

As Governments around the world look to increase the energy efficiency of dwellings for a multitude of reasons such as health factors, security of energy supply and mitigating climate change, the accuracy of the methodology employed to assess the energy performance of dwellings becomes imperative. In Europe, the European Directive on the Energy Performance of Buildings (European Parliament, 2003), referred to as the Energy Performance of Buildings Directive (EPBD) stipulates that all European member states must produce an Energy Performance Certificate (EPC) and make this available to the next prospective occupier. EPCs are designed to evaluate the efficiency of a dwelling by using a scale of A-G, similar to the European Commission Energy Labelling of Domestic Appliances (European Commission, 2011) commonly used in White Goods.

Energy rating systems for dwellings are now becoming more prevalent in other parts of the world. In Australia, similarities can be drawn between the EPC and the House Energy Rating (Horne et al., 2005). The recent adoption by ASHRAE of the Building Energy Quotient Program – Advanced Building Energy Labelling (Jarnagin, 2009), illustrates the relevance of simplified assessment

methods in the United States of America. The Building Energy Quotient Program is very similar to European EPCs and offers an update on the information and detail which can be recorded in the Energy Star labelling program (McWhinney et al., 2005).

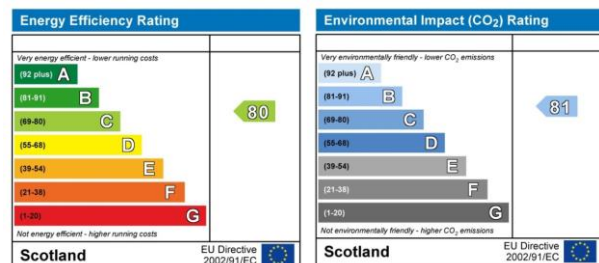


Figure 1 Sample SAP derived Energy Efficiency and Environmental Impact Ratings for Scotland

In the UK, SAP is the procedure used to generate an EPC for all dwellings. The SAP methodology has been compared to detailed simulation for low-energy buildings (Cooper, 2008). This study found discrepancies in the SAP treatment of low energy dwellings. SAP has also been compared to the Passive House Planning Package (PHPP) and it has been found that SAP may underestimate the heating required for a low energy house compared to PHPP (Reason and Clarke, 2008). Studies have also shown that there can be variances in results between SAP and Dynamic Simulation tools (Murphy et al., 2011). Simplified symbolic assessment methods have been shown to be relevant for controllability analysis (Tashtoush et al., 2005) and for the assessment of buildings (Counsell et al., 2010). It is the author's belief that the SAP methodology may benefit by the creation of a tool to simply estimate the potential impact of innovative technologies to energy estimation and regulation. This tool could also address the discrepancies raised with the current SAP methodology.

OBJECTIVE

This paper describes a simplified dynamic method of assessing the controllability and energy estimation of a dwelling (with a structure of uniform material) and its servicing systems. This method integrates with the SAP methodology and looks to suggest where advanced controllability of dwelling systems and a dynamic framework could supplement SAP.

The knowledge for this method has been transferred from design processes and methods used in the design of aircraft flight control systems (Counsell, 1992) to establish a modelling and design process for dwellings and its systems. The paper describes a holistic approach to the modelling of the non-linear and linear dynamics of the integrated building and its systems. This model is used to analyse the controllability of a dwelling using Non-linear Inverse Dynamics controller design methods used in the aerospace and robotics industry.

Rationale of a Dynamic Approach

The SAP Methodology is well established and is the culmination of three decades of research commencing with BREDEM 1 (Uglow, 1982, Uglow, 1981). SAP is based on BREDEM (Building Research Establishment Domestic Energy Model). BREDEM 12 and BREDEM 8 have been described in depth (Anderson et al., 2001a, Anderson et al., 2001b). It is the recognisable tool used in the UK to generate EPCs and for building professionals to meet Buildings Compliance. The UK buildings industry is familiar with SAP. The rationale of the approach documented in this paper is to work with SAP and not against it. Due to the role of SAP, we can work within the current regulatory framework by utilising the current SAP procedure as a foundation for our IDEAS Methodology.

SAP is assumed to be fully steady state, but in fact, SAP has many factors (inherited from BREDEM) which are used dynamically to calculate factors such as the Mean Internal Temperature of the dwelling or the responsiveness of a heating system. The current SAP methodology uses a heating systems controllability rating to help derive the Mean Internal Temperature of a dwelling. The rationale taken with this dynamic approach for SAP is to augment the current SAP method by creating a dynamic framework. With IDEAS we can take into account statistical parts of the model such as impact of casual heat gains and solar gains by inheriting this from the current SAP model. Therefore, we can create a model which is more advanced but is also backwards compatible with the current SAP model. The underlying theory is that the use of more detailed data in our model will produce more detailed results. A methodology is only as accurate as the foundation of data upon which it rests.

There is also scope for a dynamic version of SAP to be used at a buildings design stage; there is currently no design version of SAP. Controllability assessment at the conceptual design stage will help to prevent current problems of poor control and high-energy costs that arise later in the detailed design phase or at post construction stage. The cost of removing poor control performance in the later stages of design is normally excessive and must be avoided if possible (French, 1999).

The buildings industry uses the SAP methodology to calculate a rating for Energy Efficiency and

Environmental Impact of that specific dwelling. The SAP methodology does not currently allow for advanced controllability of systems to be modelled. In order to achieve this, a simplified mathematical model is required with enough detail to know which factors are affecting the controllability.

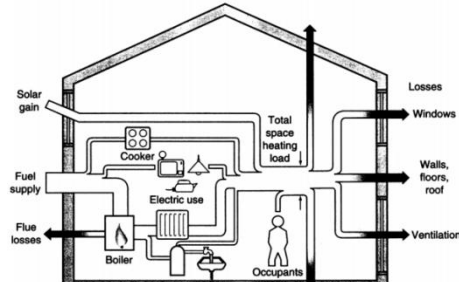


Figure 2 - BREDEM 12 / SAP methodology Schematic (Anderson et al., 2001b)

The rationale of IDEAS is to initially use a linear thermodynamic model with the non linearities associated with power limitations such as there is no cooling system.

Inverse Dynamics in Microsoft Excel

The fundamental difference in the approach taken in this dynamic model is the use of Inverse Dynamics. The use of Inverse Dynamics allows for the perfect control at each model timestep. At each timestep there is no need to solve an iterative or numerical process. By using inverse dynamics, the value at each model timestep is known. This is very powerful and also allows us to put Dynamic Simulation in Microsoft Excel.



Figure 3 – Inverse Dynamics; the Control System calculates the input required for a desired output

Without this formula for Inverse Dynamics it would be impossible to place this model in Microsoft Excel. Inverse Dynamics is an enabler, which allows IDEAS results to be calculated at each timestep. Detailed Dynamic Tools are a complex unfamiliar environment for many in the buildings industry and for the majority of the users of SAP (Counsell et al., 2010). Microsoft Excel is an environment that many users will be familiar. It can be seen that there are other tools (such as PHPP) using excel due to the simplicity of operation, familiarity of environment and high installed user base it provides.

METHODOLOGY

Building Physics and Mathematical Model

A fundamental building physics model was created to represent heat transfer between the dwelling and the outside environment. The differential equations were derived from first principals. Once differential equations were created they were converted into state space for controllability analysis.

The model is specifically developed to test the controllability of a dwelling. The dynamic model describes the energy and mass balance of air in the dwelling having a heating system. The assumptions inherent in constructing this model are numerous. However, the purpose of the model is not to emulate future reality and base design decisions around it, as advanced integrated software packages, such as ESPr (ESRU, 2011) already exist.

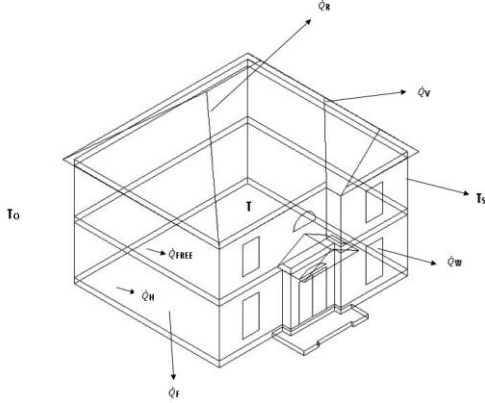


Figure 4 – Relationships which can affect the Energy Estimation of Dwellings

The simplified model assumes that the indoor zone air is fully mixed at constant pressure and is stratified for natural ventilation. The dwelling glazing, roof and floor are considered to be in steady state, using U values taken directly from SAP. This leads to far less complex dynamic equations, but detailed enough to analyse controllability. At each timestep, the furniture & internal mass in the dwelling is modelled in addition to the Structure and Air temperature.

Heat Flow through the Dwelling

The walls are sources of heat storage. The heat transfer is between the wall temperature and the internal temperature. Heat from external air is stored in the structure. When the temperature drops in the zone the heat is transferred into the room. In the same way when the wall temperature drops below the room temperature then heat is transferred to the wall. It is assumed that the energy stored in windows, roof and floor are all negligible compared with the air mass and structure, such that:

Windows Heat Loss is:

$$\dot{Q}_w = U_w A_w (T(t) - T_o(t)) \quad (1)$$

Floor Heat Loss is:

$$\dot{Q}_F = U_F A_F (T(t) - T_o(t)) \quad (2)$$

Roof Heat Loss is:

$$\dot{Q}_R = U_R A_R (T(t) - T_o(t)) \quad (3)$$

Furniture and Internal Mass Heat Loss is:

$$\dot{Q}_{FT} = U_{FT} A_{FT} (T(t) - T_{FT}(t)) \quad (4)$$

The above equations state that there is constant heat loss through windows, furniture and internal mass, roof and floor and thus these building elements are

always in steady state condition. This assumption fits with U-Values and their use in SAP.

The heat loss through a solid wall is approximated by one energy store, the thermal mass of the bricks and the overall U Value for conductions through the wall. The focus of the method is for a structure of uniform material, hence one node for the structure (T_s) is used.

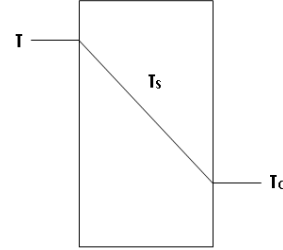


Figure 5 - Relationship between Temperature inside and Outside of Solid

Rate of Change of Stored Heat

Thermal corner effects are neglected so that internal and external wall areas can be assumed the same. U-Values (overall thermal transmittance coefficient) are used to model the heat transfer through the building fabric. While the thermal resistances and thermal capacities can be calculated, a weighted average of these resistances and capacities was used for a single capacity equivalent of a multi-layer wall construction to simplify the model for controllability analysis.

The rate of heat stored in the bricks is:

$$\dot{Q}_{STORED} = M_s C_s \frac{dT_s(t)}{dt} \quad (5)$$

This equates to the difference between the rate at which heat is entering and leaving the wall:

$$\dot{Q}_{STORED} = 2U_s A_s (T(t) - T_s(t)) - 2U_s A_s (T_s(t) - T_o(t)) \quad (6)$$

Where a factor of 2 in equation (6) is used to prevent the heat transfer being halved at steady state (Khalid, 2011). Such that:

$$\frac{M_s C_s}{2} \frac{dT_s(t)}{dt} = U_s A_s (T(t) - T_s(t)) - U_s A_s (T_s(t) - T_o(t)) \quad (7)$$

When the rate of change of the structure temperature (T_s) is zero (steady state mode assumes that the structural temperature of a dwelling is constant), SAP equivalent results should be produced. When the wall temperature has reached a steady state value, this as expected will be given by:

$$T_s(t) = \frac{T(t) + T_o(t)}{2} \quad (8)$$

Where T_o is the external zone temperature connected to the wall, and T is the temperature inside the dwelling; Heat Loss from the room:

$$2U_s A_s \left(T(t) - \left(\frac{T(t) + T_o(t)}{2} \right) \right) \quad (9)$$

Steady State structure heat loss:

$$\dot{Q}_{SSS} = U_S A_S (T_S(t) - T_o(t)) \quad (10)$$

Rate of Change of Air Temperature

In IDEAS, we assume that air is highly stratified and fully mixed so that we have a constant temperature in the building. The air in the room is described as:

$$M_A C_A \frac{dT(t)}{dt} = \dot{Q}_H(t) + \dot{Q}_{FREE}(t) - \dot{Q}_S(t) - \dot{Q}_F(t) - \dot{Q}_R(t) - \dot{Q}_W(t) - \dot{Q}_V(t) - \dot{Q}_{FT}(t) \quad (11)$$

Where $\dot{Q}_{FREE}(t)$ is free heat gain from:

- Appliances
- People
- Lighting
- Solar Gain

For which normal SAP derived figures are updated so that real measured data is used, at a sampling resolution of 5 minutes. Climate data for Sheffield, UK was imported into IDEAS, using a data file from Meteornorm (Meteotest, 2011); this was used to provide a figure for Solar Gain. Appliance Gains were taken from an International Energy Agency / Energy Conservation in Buildings and Community Systems Program (ECBCS) Annex 42 study based upon real UK test data for 69 monitored dwellings (IEA, 2006). Metabolic Gains are calculated based upon the number of occupants in each particular dwelling. This figure is derived from the SAP provided Total Floor Area figure TFA. Lighting gains are taken into consideration in the Appliance Gains figure.

\dot{Q}_H is the heating system under control and \dot{Q}_V is from the natural infiltration (air leakage through the introduction of outside air into a dwelling).

Controllability Analysis

The differential equations are factorised and simplified for controllability analysis.

Temperature of Internal Dwelling Air:

$$M_A C_A \frac{dT(t)}{dt} = \begin{bmatrix} \dot{Q}_H + \dot{Q}_{FREE} \\ -\dot{M}_V C_A (T(t) - T_o(t)) \\ -2U_S A_S (T(t) - T_S(t)) \\ -U_F A_F (T(t) - T_o(t)) \\ -U_R A_R (T(t) - T_o(t)) \\ -U_w A_w (T(t) - T_o(t)) \\ -U_{FT} A_{FT} (T(t) - T_{FT}(t)) \end{bmatrix} \quad (12)$$

Temperature of Dwelling Structure:

$$M_S C_S \frac{dT_S(t)}{dt} = 2U_S A_S (T(t) - 2T_S(t) + T_o(t)) \quad (13)$$

Temperature of Dwelling Furniture & Internal Mass:

$$M_{FT} C_{FT} \frac{dT_{FT}(t)}{dt} = U_{FT} A_{FT} (T_a(t) - T_{FT}(t)) \quad (14)$$

To Simplify (14), the brackets are multiplied out and the equation is factorised in terms of variables: \dot{Q}_H , \dot{Q}_{FREE} , T , T_S , T_{FT} and T_o :

$$\frac{dT(t)}{dt} = a_{11}T(t) + a_{12}T_S(t) + a_{13}T_{FT}(t) + b_{11}\dot{Q}_H + d_{11}\dot{Q}_{FREE} + d_{12}T_o(t) \quad (15)$$

Where Constants are defined as follows:

$$a_{11} = \left[\frac{-\dot{M}_V C_A - 2U_S A_S - U_F A_F - U_R A_R - U_w A_w - U_{FT} A_{FT}}{M_A C_A} \right] \quad (16)$$

$$a_{12} = \left[\frac{2U_S A_S}{M_A C_A} \right] \quad a_{13} = \left[\frac{U_{FT} A_{FT}}{M_A C_A} \right] \quad b_{11} = \left[\frac{1}{M_A C_A} \right]$$

$$d_{11} = \left[\frac{1}{M_A C_A} \right] \quad d_{12} = \left[\frac{\dot{M}_V C_A + U_F A_F + U_R A_R + U_w A_w + U_{FT} A_{FT}}{M_A C_A} \right]$$

The same procedure of simplification is carried out for (Temperature of Dwelling Structure);

$$\frac{dT_S(t)}{dt} = a_{21}T(t) + a_{22}T_S(t) + d_{22}T_o(t) \quad (17)$$

Where a_{21} , a_{22} and d_{22} are given by:

$$a_{21} = \left[\frac{2U_S A_S}{M_S C_S} \right] \quad a_{22} = \left[-\frac{4U_S A_S}{M_S C_S} \right] \quad d_{22} = \left[\frac{2U_S A_S}{M_S C_S} \right] \quad (18)$$

The same procedure of simplification is carried out for (Temperature of Dwelling Furniture and Internal Mass);

$$\frac{dT_{FT}(t)}{dt} = a_{31}T(t) + a_{33}T_{FT}(t) \quad (19)$$

Where a_{31} and a_{33} are given by:

$$a_{31} = \left[\frac{U_{FT} A_{FT}}{M_{FT} C_{FT}} \right] \quad a_{33} = \left[-\frac{U_{FT} A_{FT}}{M_{FT} C_{FT}} \right] \quad (20)$$

State Space Model

In order to apply the aerospace controllability science (Bradshaw and Counsell, 1992), the mathematical model detailed in dynamic equations must be represented in State Space representation.

$$\dot{x}(t) = Ax(t) + Bu(t) + Dd(t) \quad (21)$$

Where (21) is the state equation, $\dot{x}(t)$ is the State Vector, $Ax(t)$ is the State Matrix, $Bu(t)$ is the Input Matrix and $Dd(t)$ is the Disturbances Matrix.

$$y(t) = Cx(t) \quad (22)$$

Where (22) is the output equation.

This state space model describes the dynamic behaviour of the building and its systems for a small amplitude perturbation δ about a steady state equilibrium condition. Where $y(t)$ is the measured output vector, $x(t)$ is a vector of state variables, $u(t)$ is a vector of system inputs (i.e. controller outputs) and $d(t)$ is a vector of disturbances. A, B and D are time invariant matrices consisting of constants which have been derived in the Controllability Analysis section of this paper. The linear statespace model (21) describes the dynamic behaviour of the dwelling for a small amplitude perturbation δ .

These two equations can be put together in state space form:

$$\begin{bmatrix} \dot{T}(t) \\ \dot{T}_s(t) \\ \dot{T}_{FT}(t) \end{bmatrix} = \begin{bmatrix} a_{11} & a_{12} & a_{13} \\ a_{21} & a_{22} & 0 \\ a_{31} & 0 & a_{33} \end{bmatrix} \begin{bmatrix} T(t) \\ T_s(t) \\ T_{FT}(t) \end{bmatrix} + \begin{bmatrix} b_{11} \\ 0 \\ 0 \end{bmatrix} \begin{bmatrix} \dot{Q}_H(t) \\ 0 \\ 0 \end{bmatrix} + \begin{bmatrix} d_{11} & d_{12} \\ 0 & d_{22} \\ 0 & 0 \end{bmatrix} \begin{bmatrix} \dot{Q}_{FREE}(t) \\ T_o(t) \end{bmatrix} \quad (23)$$

CONTROLLABILITY

The engineering science presented in this paper is based on 'A Perfect Control Philosophy'. This philosophy aims to establish for a given design, if perfect control is feasible whilst maintaining stability for the closed loop control system. The value of this feasibility strictly is in allowing the designer to assess the ease in which perfect control could be achieved. The assumption is that the easier it is to achieve perfect control then in reality the easier the real system will be to control. The authors believe that is a sound and thorough philosophy to adopt to establish the controllability of a dwelling.

In order to estimate the energy required to maintain an ideal standard occupancy temperature and time profile (such as that defined by BREDEM), the dynamics of the system have to be inverted to establish what power input is required at a system time to achieve the target temperature. This requires the solution to PERFECT control, which can be obtained using RIDE (Muir and Bradshaw, 1996) control algorithms. The RIDE Theory utilises Inverse Dynamics, firstly defining the system output in state-space form. A feedback control system can only control (i.e. track) what it feeds back as measured system outputs. Thus, to analyse the controllability of the measurements, they must be defined. In this case, if room temperature is the system output:

$$Y(t) = Cx(t) \quad (24)$$

$$Y(t) = \begin{bmatrix} 1 & 0 & 0 \\ T(t) \\ T_s(t) \\ T_{FT}(t) \end{bmatrix} \quad (25)$$

$$Y(t) = T(t) \quad (26)$$

We assume the temperature is the air temperature.

Here, we control T, so $\dot{Y} = T$. We are trying to measure and control the energy requirement of the Dwelling so that the demand temperature. To invert the static space model we can apply the perfect inverse control law RIDE (Counsell, 1992):

$$U(t) = g(CB)^{-1} v(t) - y(t) + U_{eq}(t) \quad (27)$$

Where (27) is the control algorithm where:

$U(t)$ = Heater demand, determined by the controller to maintain the required air temperature.

$g(CB)^{-1}$ = Controller gain matrix where, g is the Global Scalar Gain.

$v(t) - y(t)$ = Difference between what is required V, and what is measured and outputted y (i.e the actual dwelling air temperature).

$U_{eq}(t)$ = This will provide extra help (it is an estimate) to the controller to calculate the correct heater setting (i.e. $U(t)$), to raise the temperature of the air to the required level (V).

CB will tell the direction of the asymptotes, whilst CB inverse is used to align the asymptotes towards the stable region. In this proposed method, we wish to use controllability to align the direction of the asymptotes towards the negative real axis of the root locus. This is where the system is PERFECTLY controllable.

When a system is controlled perfectly with the RIDE control law, the closed loop system response is a perfect first order system such that:-

$$Y(t) = v(t) 1 - e^{-gt} \quad (28)$$

Where:

$Y(t)$ = measured output vector

$v(t)$ = is the target room temperature.

$$\text{As } t \rightarrow \infty, \quad Y(t) \rightarrow V(t) \quad (29)$$

Equation (29) states as the Temperature of the air in the dwelling tend towards infinity, the system output (the temperature of the air which varies with time) tends to the target room temp (which also varies with time).

System Response

$\frac{1}{g}$ is the time constant of the closed loop response.

$\frac{g}{g}$

This gives the following kind of profile to a step response.

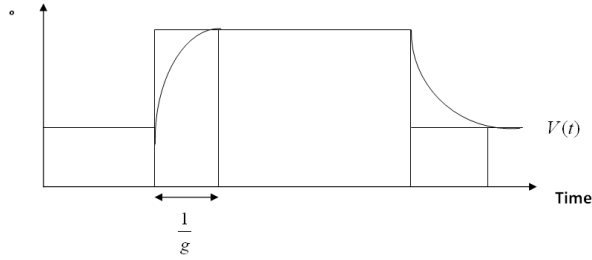


Figure 6 – System Response: Step Response Profile

The step response profile demonstrates that we can assign the responsiveness of the system, and therefore allow the system to integrate within the SAP environment. Parameter g is the system response, which can be entered in minutes, and $v(t)$ is the target room temperature. $\frac{1}{g}$ is the response time which has

an effect – this is already built into SAP. BREDEM 12 records the Responsiveness of a Primary Heating System (Rp) on scale from Fully Responsive (1) to Completely Unresponsive (0). Thus, we can use this relationship to back substitute into the control law as a prediction to take into account the system's response characteristic. In this case let us assume that g is very large as in the case of a very powerful direct electric heating system. Thus the control law in this case is given by:

$$U(t) = \dot{Q}_H(t) = \begin{bmatrix} gM_A C_A v(t) - T(t) - \\ \left(-\dot{M}_V C_A - 2U_S A_S \right) T(t) \\ \left(-U_F A_F - U_R A_R - U_W A_W \right) T(t) \\ - 2U_S A_S T_S(t) - U_{FT} A_{FT} \\ T_{FT}(t) - \dot{Q}_{FREE}(t) \\ - \left(\dot{M}_V C_A + U_F A_F + U_R A_R \right) T_o(t) \\ \left(+U_W A_W + U_{FT} A_{FT} \right) T_o(t) \end{bmatrix} \quad (30)$$

IDEAS IMPLEMENTATION

Equation 30 could be dynamically solved by Dynamics Modelling such as ESP and IES. An IDEAS model, created in Microsoft Excel 2007 is used to solve Equation 30 symbolically. In IDEAS, the building physics is represented by three linear Ordinary Differential Equations; describing the Temperature of outside Air, Internal Air and Furniture & Internal Mass, which have been put into State Space form. Relating all the necessary parameters we have, we can use Inverse Dynamics to find out, for example, what instantaneous heat is required to meet a certain temperature. IDEAS is a linear model of the building, although the model as whole is non linear. For example, constraints are placed into the model for maximum and minimum heat which can be delivered into the dwelling. Therefore the discontinuities associated with plant saturation for example are modelled.

RESULTS

Modelling a highly responsive system in IDEAS

A fast acting heating system consisting of a gas powered boiler and radiators was modelled in SAP and IDEAS.

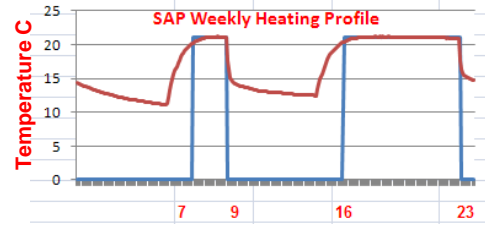


Figure 7 – Output from IDEAS model; Transient response highlight the tracking of a SAP daily setpoint

The yearly SAP heating profile was tracked stating a temperature of 21°C in Zone 1 (Lounge) between 7 and 9am, and 4 and 11pm; Weekend heating profile states a Zone 1 temperature of 21°C being applied between 7am and 11pm. Figure 7 highlights the transient performance of the IDEAS model, the setpoint is reached for the demand time, in keeping with the philosophy of SAP.

Yearly graph outputs from IDEAS highlight the fluctuation of Air and Furniture & Internal Mass Temperatures. In contrast, the yearly structure temperature is seen to move more slowly, dominated by external temperature.

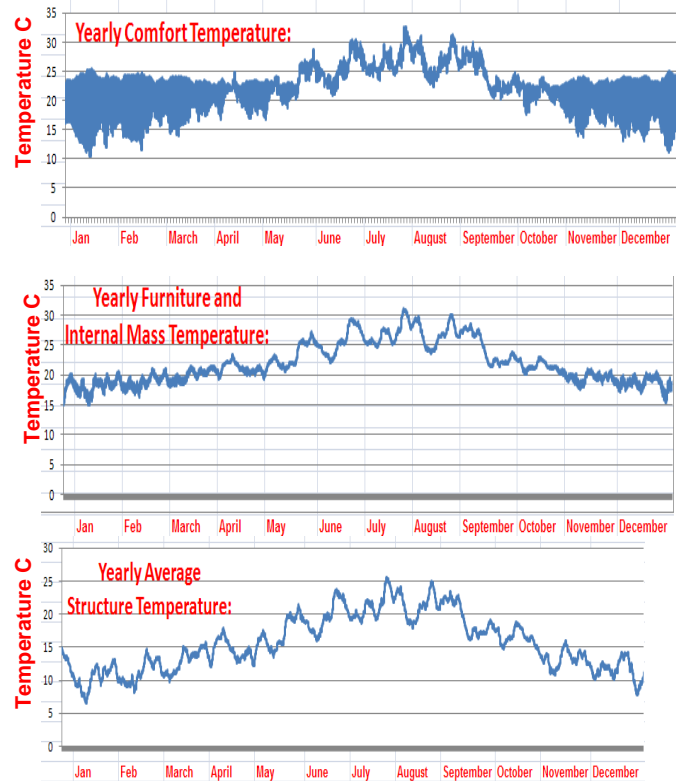


Figure 8 – Output from IDEAS; yearly Comfort, Furniture & Internal Mass, and Average Structure Temperature

Energy consumption was compared between IDEAS and SAP and a very close correlation was found. Figure 9 highlights that no heating was required in both models to reach the demand temperatures.

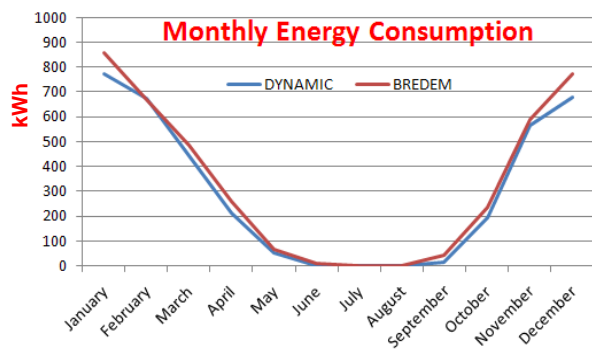


Figure 9 - Output from IDEAS model; Monthly Energy Consumption, comparison with BREDEM

DISCUSSION

The Dynamic model presented is a fundamental model based on the linearised thermodynamics of the dwelling. This can be extended to a non linear third order model. The philosophy is extendable to non-linear models and can include higher order models. As highlighted in the conclusions, this work is a foundation focused on the example of a dwelling structure with a uniform material; this work will be taken further by building on the flexibility that this method offers. The method will be extended for composite wall types based upon a resistance – capacitance (R-C) model (ISO, 2008).

CONCLUSION

This paper presents the current SAP methodology and the BREDEM foundations with respect to the Energy Estimation of a Heating System for a dwelling. From this a new methodology is presented based upon systems engineering analysis and control theory knowledge developed from the aerospace industry. The work presented in this paper is an encouraging start and a foundation.

An energy estimation model for a single zone dwelling was presented; the methodology can be used to supplement the SAP 2 zone Methodology. Currently SAP is linear, that is SAP meets the superposition principle: The net response at a given place and time caused by two or more stimuli is the sum of the responses which would have been caused by each stimulus individually (Bach et al., 2009). We need Non Linear SAP to take into account the non linearity of the system. In reality, systems are not perfect and behave in a non-linear manner. For example, natural ventilation is non linear. Heating Systems are not perfect and behave in a Non Linear method. For the SAP methodology to accurately model Non Linear systems such as Heating, a Non Linear method must be employed.

The methodology presented builds on the foundations set by BREDEM, by highlighting the

importance of Responsivity, Efficiency and Controllability factors of a system. These factors are of the utmost importance in the aerospace industry in addition to the buildings industry, and therefore it is felt that the correlation between the two sciences is appropriate.

The main benefits of this proposed addition to the SAP Methodology are advantageous to both the dwelling occupier and the environment. A dwelling with good control is a home which has good occupant comfort, saves energy and therefore also saves the occupier money. The reduction in energy use from a well controlled dwelling has a positive effect on both the dwellings SAP score and the environment. A dwelling with poor control wastes energy, can cause discomfort for the tenant and can increase dwelling CO₂ emissions. It is therefore of the deemed to be important that a new method of assessing controllability of non-linear system is built into the SAP / BREDEM framework.

FUTURE WORK

IDEAS is currently a linear model with constraints. Future work is required to add actuators to heating systems which can be modelled. A non linear model is required so that the main parameters depend on state variables and main parameters are estimated at each time step. The linear Ordinary Differential Equations are required to be replaced with Non Linear versions. QFree Gains and Weather Data is independent of model (whether model is linear or non-linear) and so this data will be still be usable in a future non linear physics model. Comparative studies between the current linear model and a non linear model would then be required.

ACKNOWLEDGEMENT

BRE TRUST for the funding of this research

NOMENCLATURE

\dot{Q}_R	=	Heat Transfer through Roof (W)
\dot{Q}_W	=	Heat Transfer through Windows (W)
\dot{Q}_F	=	Heat Transfer through Floor (W)
\dot{Q}_V	=	Heat Transfer through Ventilation (W)
\dot{Q}_{FREE}	=	Heat Transfer from Free Heats (W)
\dot{Q}_H	=	Heat Transfer from Heating (W)
T	=	Internal Temperature (K)
T_o	=	Outside Temperature (K)
T_S	=	Structure Temperature (K)
U_Z	=	U Value (material Z) (W/m ² K)
A_Z	=	Area (material Z) (W/m ² K)
M_Z	=	Mass (material Z) (Kg)
t	=	time (seconds)

REFERENCES

- ANDERSON, B. R., CHAPMAN, P. F., CUTLAND, N. G., DICKSON, C. M., DORAN, S. M., HENDERSON, G., HENDERSON, J. H., ILES, P. J., KOSMINA, L. & SHORROCK, L. D. 2001a. *BREDEM 8 - Model Description*, BRE.
- ANDERSON, B. R., CHAPMAN, P. F., CUTLAND, N. G., DICKSON, C. M., HENDERSON, G., HENDERSON, J. H., ILES, P. J., KOSMINA, L. & SHORROCK, L. D. 2001b. *BREDEM 12 - Model Description*, BRE.
- BACH, D. R., FLANDIN, G., FRISTON, K. J. & DOLAN, R. J. 2009. Time-series analysis for rapid event-related skin conductance responses. *Journal of neuroscience methods*, 184, 224-234.
- BRADSHAW, A. & COUNSELL, J. 1992. Design of autopilots for high performance missiles. *ARCHIVE: Proceedings of the Institution of Mechanical Engineers, Part I: Journal of Systems and Control Engineering 1991-1996 (vols 205-210)*, 206, 75-84.
- COOPER, G. A. 2008. *SAP 2005 and Low Energy Dwellings*. Oxford Brookes.
- COUNSELL, J. M. 1992. *Optimum and safe control algorithm (OSCA) for modern missile autopilot design*. PhD, Lancaster University.
- COUNSELL, J. M., KHALID, Y. A. & BRINDLEY, J. 2010. CONTROLLABILITY OF BUILDINGS, A multi-input multi-output stability assessment method for buildings with slow acting heating systems. *Simulation Modelling Practice and Theory*.
- ESRU. 2011. *ESP-r Applications Tutorial* [Online]. Available: http://www.esru.strath.ac.uk/Programs/ESP-r_tut/esp_aps.htm [Accessed 2011/05/20].
- EUROPEAN COMMISSION. 2011. *Energy Labelling of Domestic Appliances* [Online]. Available: http://ec.europa.eu/energy/efficiency/labelling/labelling_en.htm [Accessed 2011/05/16].
- EUROPEAN PARLIAMENT 2003. DIRECTIVE 2002/91/EC OF THE EUROPEAN PARLIAMENT AND OF THE COUNCIL of 16 December 2002 on the energy performance of buildings. *Official Journal of the European Communities*.
- FRENCH, M. J. 1999. *Conceptual design for engineers*, Springer Verlag.
- HORNE, R., HAYLES, C., HES, D., JENSEN, C., OPRAY, L., WAKEFIELD, R. & WASILUK, K. 2005. International comparison of building energy performance standards. *Report to Australian Greenhouse Office, Department of Environment and Heritage*.
- IEA. 2006. *European Electrical Standard Profiles - Annex 42 September 2006* [Online]. Available: <http://www.ecbcs.org/annexes/annex42.htm> [Accessed 2011/05/20].
- ISO, E. 2008. 13790: 2008. *Thermal performance of buildings-Calculation of energy use for space heating and cooling*.
- JARNAGIN, R. E. 2009. ASHRAE Building EQ. *ASHRAE Journal*, 51 (12): 18-19, 51.
- KHALID, Y. 2011. *Controllability of Building Systems*. PhD, Strathclyde.
- MCWHINNEY, M., FANARA, A., CLARK, R., HERSHBERG, C., SCHMELTZ, R. & ROBERSON, J. 2005. ENERGY STAR product specification development framework: using data and analysis to make program decisions. *Energy Policy*, 33, 1613-1625.
- METEOTEST. 2011. *Meteonorm - Global Meteorological Database version 6.1* [Online]. Available: www.meteotest.ch/en [Accessed 10/10 2011].
- MUIR, E. & BRADSHAW, A. 1996. Control law design for a thrust vectoring fighter aircraft using robust inverse dynamics estimation (RIDE). *ARCHIVE: Proceedings of the Institution of Mechanical Engineers, Part G: Journal of Aerospace Engineering 1989-1996 (vols 203-210)*, 210, 333-343.
- MURPHY, G. B., KUMMERT, M., ANDERSON, B. & COUNSELL, J. 2011. A comparison of the UK Standard Assessment Procedure and detailed simulation of solar energy systems for dwellings. *Journal of Building Performance Simulation*, 4, 75-90.
- REASON, L. & CLARKE, A. 2008. PROJECTING ENERGY USE AND CO2 EMISSIONS FROM LOW ENERGY BUILDINGS; A COMPARISON OF THE PASSIVHAUS PLANNING PACKAGE (PHPP) AND SAP. AECB.
- TASHTOUSH, B., MOLHIM, M. & AL-ROUSAN, M. 2005. Dynamic model of an HVAC system for control analysis. *Energy*, 30, 1729-1745.
- UGLOW, C. E. 1981. The calculation of energy use in dwellings. *Building Services Engineering Research and Technology*, 2, 1.
- UGLOW, C. E. 1982. Energy use in dwellings: An exercise to investigate the validity of a simple calculation method. *Building Services Engineering Research and Technology*, 3, 35.