



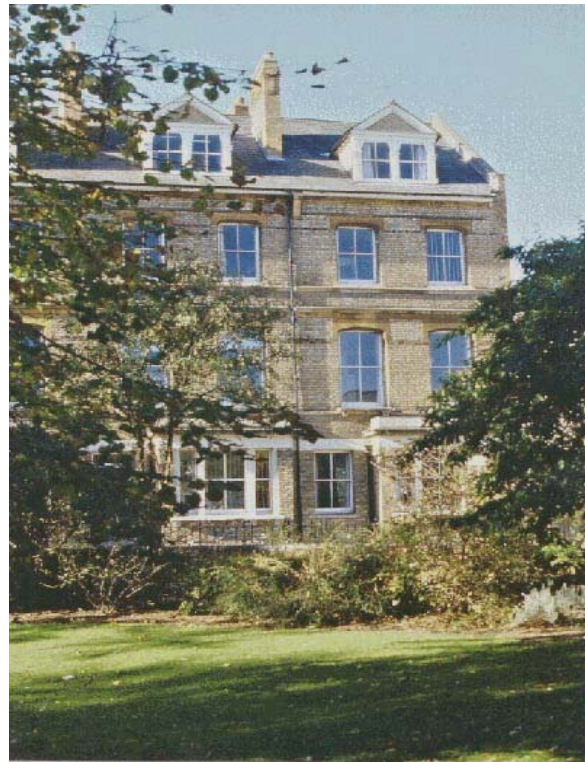
**DEPARTMENT OF SOCIAL POLICY AND SOCIAL WORK**  
**BARNETT HOUSE**

**BARNETT PAPERS IN  
SOCIAL RESEARCH**

**Mark Tomlinson**  
**Robert Walker**  
**Glenn Williams**

**Measuring Poverty in Britain as a  
Multi-Dimensional Concept, 1991  
to 2003**

**2007/6**



Editor:

Dr Martin Seeleib-Kaiser

Department of Social Policy and Social Work  
University of Oxford  
Barnett House  
32 Wellington Square  
Oxford  
OX1 2ER

[martin.seeleib@socres.ox.ac.uk](mailto:martin.seeleib@socres.ox.ac.uk)

**Abstract:**

While poverty is widely accepted to be an inherently multi-dimensional concept, it has proved very difficult to develop measures that both capture this multi-dimensionality and facilitate comparison of trends over time. Structural Equation Modelling appears to offer a solution to this conundrum and is used to exploit the British Household Panel Study to create a multidimensional measure of poverty. The analysis reveals that the decline in poverty in Britain between 1991 and 2003 was driven by falls in material deprivation, but more especially by reduced financial stress particularly during the early 1990s. The limitations and potential of the new approach are critically discussed.

## **1. Poverty as a multidimensional concept**

Poverty is a complex and multi-dimensional phenomenon that, in Europe at least, is normally defined relative to the living standards of the society in which it is found. Following Henry Mayhew (1851) and Charles Booth (1892), Seebohm Rowntree (1901) grappled with the complexity, distinguishing between different categories of poverty and noting the need to take account of social conditions, diet and health as well as income in assessing living standards. Much later Peter Townsend (1979) argued that poverty was not the lack of income necessary to purchase a basket of goods but rather the lack of resources to participate fully in society that resulted, through a process he termed 'structuration', from a variety of resource allocation systems operating in society. The measures created by Townsend have since been critically assessed, developed and refined by scholars such as Piachaud (1981), Mack and Lansley (1985), and Gordon et al. (2000). Increasingly priority is being given to material deprivation and to environmental aspects of people's lives over shortfalls in income (Callan et al. 1993, Nolan and Whelan 1996, Layte et al 2001). For Ringen (1988), income is merely an indirect measure of poverty that is truly experienced as the unavoidable low consumption that denies people access to a normal way of life.

Townsend's (1979, p.88) conception of poverty was inherently relative in that participation refers to engagement in 'the activities, customs and diets commonly approved by society'. While Townsend (with Brian Abel-Smith, 1965) had earlier popularized the notion of relative, as opposed to absolute, poverty, he was not the first to make this distinction. Adam Smith noted, for example, that:

A linen shirt [...] is, strictly speaking, not a necessary of life. The Greeks and Romans lived, I suppose, very comfortably, though they had no linen. But in the present times, through the greater part of Europe, a creditable day-labourer would be ashamed to appear in public without a linen shirt, the want of which would be supposed to denote that disgraceful degree of poverty which, it is presumed, nobody can well fall into, without extreme bad conduct. (Smith, 1776, Book 5, Chapter 2)

It is also apparent, from this quotation, that Smith saw shame and stigma as being inherent components of poverty, aspects that still loom large in the experience of poor people in Britain today (Lister, 2004; WBG, 2005). Indeed, Sen (1999) argues that the shame that results from poor people being unable to realise basic capabilities con-

sistent with the society in which they live is universal and absolute, manifest in all societies irrespective of the level of economic development.

The increasing availability of data, and most notably the creation of extensive longitudinal datasets, has focussed attention on poverty dynamics and the analysis of the length and frequency of spells and added to an understanding of the complexity of the phenomenon (Walker with Ashworth, 1994; Jenkins and Rigg, 2001; Rigg and Sefton, 2006; Maggio, 2004; Fouarge and Layte, 2005; Layte and Whelan, 2003; Whelan et al., 2002). Dynamic analyses have demonstrated that poverty is much more widespread than indicated by cross-sectional statistics, that transient, recurrent and permanent poverty may differ in kind and in their effects and that the risk events associated with poverty are more prevalent than spells of actual poverty. This suggests that social structures and individual agency may protect some people against the onset of poverty. Hobfoll (1998) has argued, drawing on the Conservation of Resources (COR) theory of psycho-social stress, that people with greater resources (defined in terms of social support, financial means, material goods, psychological resilience) will be less vulnerable when such resources are threatened or lost while, conversely, others with few resources may get caught in cumulative spirals of resource loss, a phenomenon already documented in qualitative research (Walker and Collins, 2003; Kempson, 1996).

Certain social and psychological supports that protect people against poverty can be eroded should poverty occur, adding further momentum to downward spirals of insecurity. Good physical and mental health, social capital and competence and civic engagement are all casualties of poverty and may, in certain circumstances, be compounded when mediated by the negative characteristics of poor places such as dilapidated infrastructure, isolation, crime and red-lining.

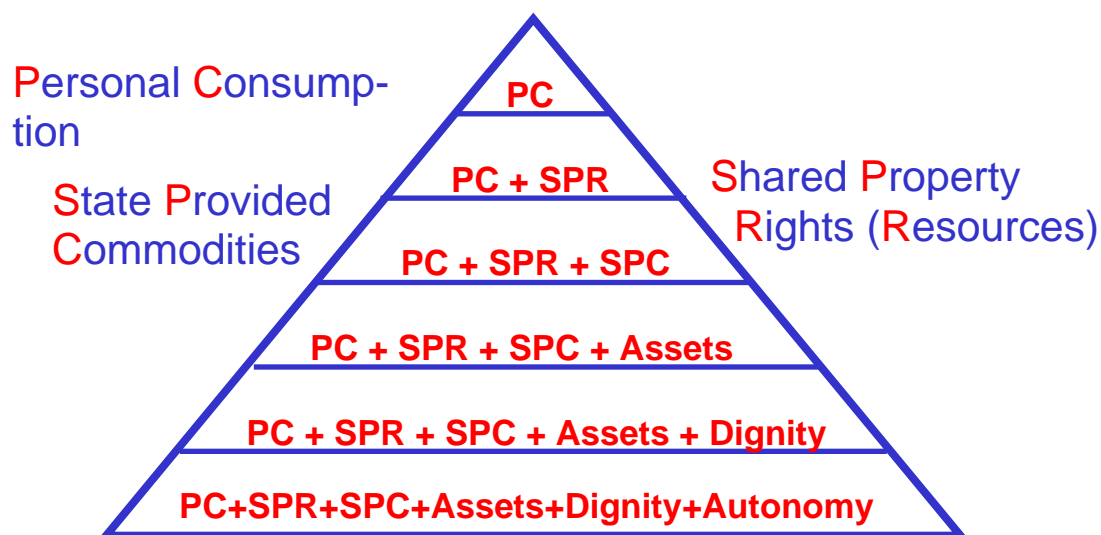
Poverty, of course, has a political dimension. Indeed, Piachaud (1987) among others argues that poverty is inherently political since it carries the imperative to respond to eradicate it. After a long period of neglect in Britain, poverty has moved to the political centre-stage since New Labour took office in 1997. Most notable was the 1999 commitment to eradicate child poverty (Blair, 1999), a political objective that has now been accepted by the Conservative opposition (Callan et al., 2006). Political definitions of poverty, while influenced by academic research, are also affected by

practical expediency. Forty-one indicators of poverty and social exclusion are currently used by the UK Department for Work and Pensions separately to measure changes in poverty (DWP, 2006a). In so doing, government implicitly accepts the multi-dimensional nature of poverty, but has lacked a means of simultaneously measuring and aggregating these measures to produce a stable composite measure. Moreover, it plans to prioritise three measures of poverty, a relative measure, a quasi-absolute measure based on freezing a relative measure in terms of real purchasing power and a measure of material deprivation to capture different aspects of poverty. The three measures together also serve to direct attention from unpalatable features of a relative income measure, namely that it provides an upwardly moving target in situations of overall economic growth, one that is given further momentum in situations where growth is accompanied by growing inequality.

Ringen (1988) draws attention to the measurement assumption and the income assumption in poverty research. The former refers to the belief that poverty exists and as such can be measured. The latter presumes that poverty can be measured in terms of a deficit in income in relation to needs, an assumption that becomes increasingly untenable if poverty is defined as the complex multi-dimensional phenomenon described above. Baulch (1996) has illustrated the problem with reference to a pyramid of concepts (Figure 1). Moving down the pyramid takes increasing account of aspects of poverty that define it as a meaningful social phenomenon. In terms of measurement, the most frequently used measures lie at the top of the pyramid since they are more straightforward to operationalise.

Personal consumption is placed at the top of the pyramid although, this is typically measured with reference to personal or, more usually, household income since this is more easily measured. (Atkinson (1995) have a preference for the use of income over expenditure because he is concerned with the human right to adequate minimum resources rather than living standards per se.) The concept of poverty gradually increases in scope to include shared property rights, state provided commodities, assets, dignity and autonomy at the bottom of the pyramid. The implication of the diagram is that the various dimensions are strictly additive although empirically this is unlikely ever to be the case. Indeed, a major challenge of the current research is to formulate the nature of the relationship between these various dimensions.

Moreover, it is probable that the dimensions lie in a causative sequence which will require specification.



Source: Baulch (1996)

Figure 1. Baulch's Pyramid

In summary, while it is widely appreciated that poverty is an inherently multi-dimensional concept, this multi-dimensionality has been lost, weakened or distorted when poverty is measured. This has not just been the result of political expediency but the absence of any method by which the holistic nature of poverty can be captured in a way that facilitates measurement over time. The partial measures used to date necessarily fail adequately to do justice to the experience of poor people and, to the extent that they distort through omission, may result in implementation of inappropriate policies. What is required is the use of statistical techniques that represent the dimensionality of the concept in a stable fashion, an approach that will ultimately require access to comprehensive datasets with reliable measures. Below we outline an initial attempt to create a comprehensive poverty index for Great Britain using a novel statistical technique that has rarely been used in poverty studies. Some exceptions that we know of are Layte et al. (2000), Kuklys (2004), Haase and Pratschke (2005) and MSD (2002). Also other related techniques have been used: for example, latent

class analysis - Whelan and Maitre (2005, 2007a, 2007b), and Dewilde (2004); and item response theory - Jenkins and Cappellari (2007).

## **2. A new approach to measurement**

In much previous quantitative research on poverty the data reduction technique of factor analysis has been used (see, for example, Calandrino, 2003, and the review by Haase and Pratschke, 2005). Simply put, this technique usually takes as input a large number of indicator variables and creates a smaller number of dimensions or 'factors' by examining the correlations between variables. These factors represent a simpler description of the data and usually can be readily interpreted by observing which variables cluster together to form the dimensions. So, for example, in poverty research material deprivation scales have been created by using factor analysis on sets of items that households possess and indices developed by examining which types of item cluster together on which particular factor (for example, Calandrino, 2003). These dimensions are usually forced to be orthogonal (independent) although this does not have to be the case.

There are some problems with this methodology. We deal with three here. First, composite indicators created using factor analysis – which are essentially weighted summations of individual variables – are sensitive to errors in measurement of the original variables. This gets amplified when the original variables are used to create the factor scores and is further compounded when the factor solutions are used across several years (see Loehlin, 1992). Such measures cannot be meaningfully compared over time with the result that trends in the various dimensions of poverty cannot be securely established.

Secondly, the factors often have to be rotated to allow a useful interpretation. That is, the original solution has to be operated on in such a way as to ease elucidation of the results or to fit with some theoretical framework. As a result of these rotations, factors are not necessarily comparable over time or space (Haase and Pratschke, 2005).



Thirdly, factor analysis is essentially an exploratory technique. No strong theoretical justification is required in deciding which variables to include or exclude from the analysis and the researcher has little control over how the variables form the resulting factors.

A structural equation model (SEM) has the potential to overcome some of these problems. Like factor analysis, a SEM reduces a large number of variables to a smaller number of factors. However, the variables are conceptualised as observed manifestations of underlying or latent concepts. Each observed variable in a SEM also has an error term associated with it, allowing measurement error to be isolated and controlled for in a way that is impossible with factor analysis. But, most importantly, a SEM requires a strong theoretical justification before the model is specified. Thus the researcher decides which observed variables are to be associated with which latent unobserved factors in advance. This avoids the problems of instability and rotated solutions prevalent in factor analysis. Not many poverty studies have used these techniques.

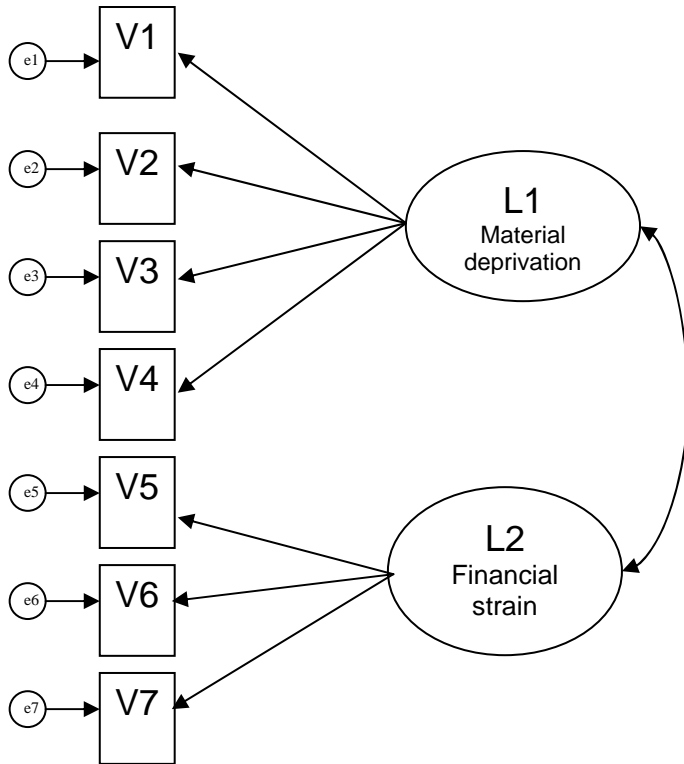
There are two fundamental types of SEM used to measure or test the validity of latent concepts – first and second order confirmatory factor analysis models (CFAs)<sup>1</sup>. A first order CFA simply attempts to measure underlying latent concepts. The left side of figure 2 shows a simple CFA which has two latent unobserved variables: L1, material deprivation; and L2, financial strain. L1 is measured by the observed variables V1 to V4 and L2 is measured by variables V5 to V7. The single headed arrows represent coefficients or loadings in the model and are usually shown in standardised form much like beta coefficients in regression analysis<sup>2</sup>. The covariance between material deprivation (L1) and financial strain (L2) is represented by the double headed arrow. The associated error terms are shown as the circles labelled e1 to e7. Using statistical techniques such as maximum likelihood and making assumptions about the distributions of the variables and error terms in the model, the coefficients and covariances can be estimated. In all SEMs a variety of fit statistics is available to assess the validity of the models constructed (see Klein, 2005, Byrne, 2001). Usually it is assumed that the observed variables in the model are continuous and that

---

<sup>1</sup> Although there are several further extensions to these, we will not go into them here.

<sup>2</sup> The arrows in this instance should not be interpreted as implying any kind of causality. Extensions of these models (known as full structural models) can be used to test causal linkages between variables and concepts.

### A simple 1<sup>st</sup> order CFA Model



### A simple 2<sup>nd</sup> order CFA model

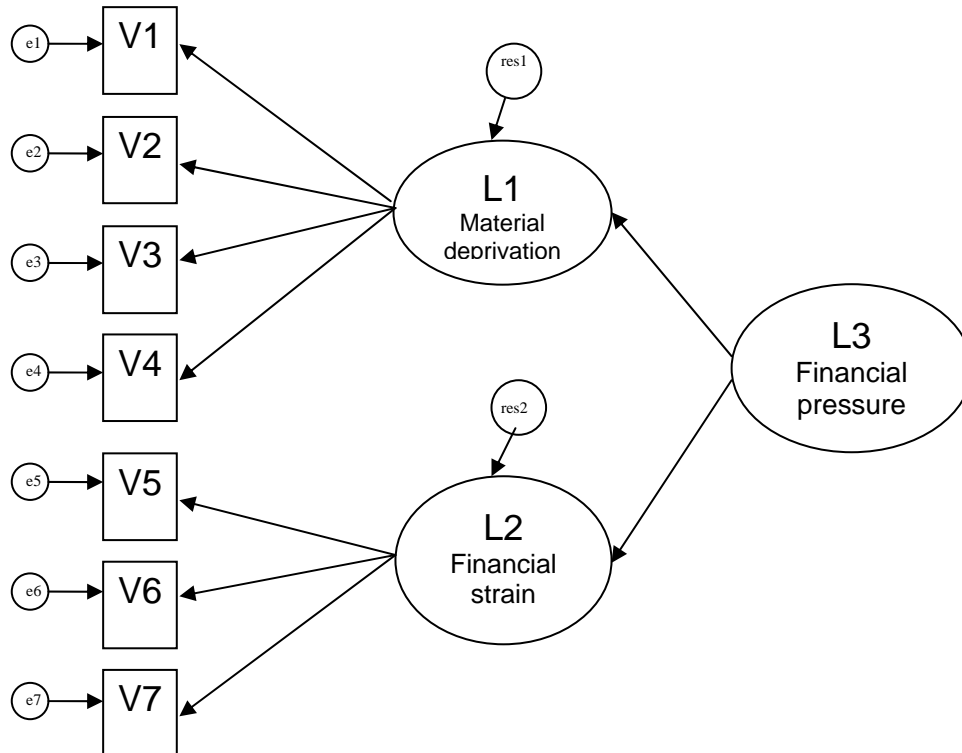


Figure 2. 1<sup>st</sup> and 2<sup>nd</sup> order CFA models

the distribution of the variables is multivariate normal. However, many studies treat categorical variables as continuous in SEM analyses (see Byrne, 2001: 70-72, for a discussion of these issues). More recently available software is beginning to allow the explicit modelling of categorical, binary and censored variables (such as MPlus).

This basic model can be taken a stage further – a second order CFA, as shown on the right of Figure 2 where another latent variable L3 is used to capture a latent concept, financial pressure, theorised to relate simultaneously to both L1 and L2. It will be noted that L1 and L2 now have residuals associated with them (res1 and res2). Models of this kind can be made as complex as necessary to describe real-world situations and employ many latent variables and various interactions between them. Furthermore, in both types of model, scores can be generated for the unobserved latent variables. These scores are analogous to the factor scores obtained using factor analysis, but without the limitations previously discussed. It is this higher order CFA approach that we attempt below<sup>3</sup>.

To summarise the advantages of this approach:

- Unlike standard factor analysis the researcher determines the underlying factors or latent constructs and their observed manifestations
- It allows modelling along strong theoretically based lines
- Complex relationships can be specified between these theoretical constructs
- It allows estimates of the unobserved variables to be calculated

### **3. Defining the measurement models**

The analysis utilizes data from the British Household Panel Study (BHPS). The BHPS commenced in 1991 with an initial sample of around 10,000 individuals resident in some 5,000 households. These individuals have subsequently been re-interviewed each year and the sample has also been extended to include more households from Scotland and Wales and to embrace Northern Ireland. While the data can

---

<sup>3</sup> The SEM here is termed a measurement model. Extensions of these models (known as full structural models) can be used to test causal linkages between variables and concepts.

be weighted to provide an accurate picture of life in Great Britain or the United Kingdom at different points in time, this analysis is restricted to Great Britain to facilitate measurement of trends. The analysis covers the period 1991 to 2003 (i.e. BHPS waves 1 to 13) and draws on information concerning the following topics: income, finances and benefits; stress; material deprivation; general housing and neighbourhood characteristics and social exclusion and civic participation. Individuals under 18 years of age are excluded from the sample analysed (although the relationship between adult and child poverty is explored in Tomlinson et al. [2007]).

While the BHPS is widely used in poverty research (for example, Jenkins and Rigg, 2001, Ermisch et al., 2001, Jenkins and Cappallari, 2007), there are number of shortcomings the most important of which is that the data are not always consistent or collected for all waves. For example, the civic participation and social isolation variables are only available for alternative waves, while the housing and neighbourhood variables used are only included from wave 6 onwards. Similarly, the material deprivation variables, which were limited at the beginning of the survey, were significantly augmented from wave 6. Thus we are forced to limit our analysis to odd years 1991, 1993, 1995 etc. and to divide our analysis into two parts. The first employs a relatively simple model to exploit data for the full period 1991 to 2003, while the second uses a more comprehensive model that takes advantage of the better data available from wave 6 onwards. The latter model conveniently coincides with the first eight years of the Blair government (1997, 1999, 2001 and 2003).

Finally, as with any secondary analysis, the analyst is constrained by the variables included in the dataset. Almost inevitably key variables are omitted while the variables available constitute only imprecise indices of the concepts of interest.

### ***Model 1 covering the period 1991 to 2003***

As noted above, the creation of a structural equation model usually relies on some strong theoretical orientation that is specified in advance. Unlike factor analysis we cannot just enter all the variables and see what will happen. We have to decide in advance on the latent concepts (factors) that characterise poverty, and specify which of the variables we observe are associated with which factors. In our case, rather than a strong theory, we have a pyramid-like framework of concepts (Figure 1) that the literature suggests may be manifestations or inherent outcomes of the experience of be-

ing in poverty. The objective in handling the large range of possible permutations of concepts is to arrive at a balanced model, that is one in which more weight is given to items at the top of the pyramid (like income, material and financial variables) than to those at the bottom (social exclusion, civic participation, psychological well-being and the environment) while ensuring that the latter still have a significant impact on the index.

Figure 3 presents a second order CFA model fitted to the BHPS data consistently available for alternative years from 1991 to 2003. It comprises several sets of indicators related to several latent concepts or dimensions that constitute the multidimensional poverty indicator (referred to from now on as the Poverty Index or PI). For simplicity's sake only selected standardized coefficients between the major latent concepts and the overall index are shown. The full models are available on request from the authors. Each major dimension is now described in turn.

*Financial strain (FINSTRAIN)*: Several articles referred to in the introduction stress the importance of income-based measures of poverty, augmented here by indicators of the perceived financial situation of the household, the sense of being in financial hardship. Financial strain, the first dimension, is an almost self-evident manifestation of poverty, certainly one that is widely documented, that comes at the top of the poverty pyramid along with income as a primary indicator of privation. The variables used to capture this concept include whether a housing payment had been missed in the last 12 months (binary), whether respondents considered their financial status to be good/bad (using a five point scale) and whether it has been getting better/worse over the last year (a three point scale). The intention was that these variables should capture both long term and the more immediate difficulties of budgeting and the variables were all recoded so that a high value relates to a financially worse scenario. Income is also included on this latent variable (recoded as logarithm of equivalised household income<sup>4</sup>).

---

<sup>4</sup> Income has been deflated to 1991 levels for model 1 and 1997 levels for model 2 using the annual retail price index (RPI 1a) available at the Office for National Statistics, series CHAW. This includes mortgage interest unlike the RPIX measure. Income for each household member is calculated as total household income before housing costs divided by the equivalised number of household members (using the McClements equivalence scale).

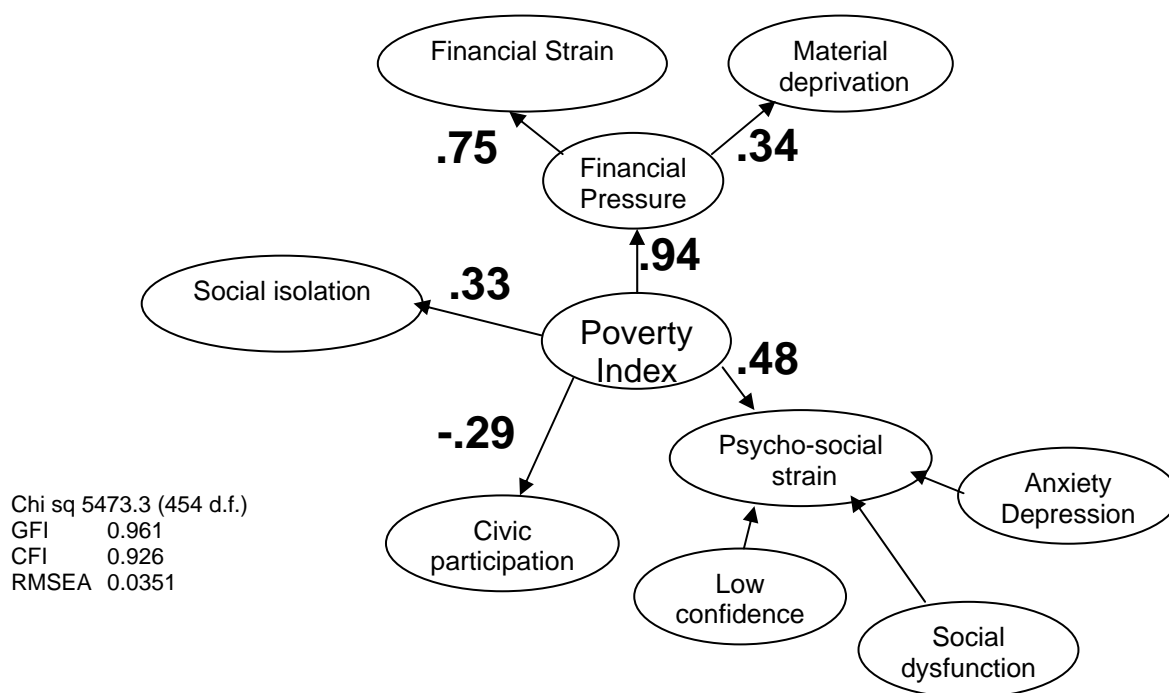


Figure 3. CFA Model 1, waves 1-13, standardised coefficients shown

*Material deprivation (MATDEP)*: There is a large body of work on the importance of including material deprivation in any measure of poverty (see Jenkins and Cappallari, 2007, Whelan and Maitre, 2005, Willetts, 2006, for example). The measures available in the BHPS are generally limited to the ownership certain possessions with no reference made to whether respondents attribute lack of ownership to inadequate resources. The raft of such indicators of material wellbeing include several binary variables each set to 1 if the household where the respondent lives does not possess a: CD player, VCR, washing machine, tumble dryer, microwave oven, dishwasher, personal computer, central heating or have use of a car (or to 0 if the items are available). Income is also included on this latent variable in the same format as for financial strain<sup>5</sup>.

We have kept material deprivation conceptually distinct from financial strain as it represents the real effects of long-term financial hardship on the household rather than the personal financial strain itself. In other words, it captures the essence of not being able to afford things or being able to replace worn out items such as electronic

<sup>5</sup> We tried various permutations with income and allowing it as an observed variable on both material deprivation and financial strain produced the best fit statistics. The other model coefficients were not very different when income was excluded altogether.

goods or kitchen appliances. Financial strain reflects monetary strain which may be somewhat different and apply in different circumstances. For example a household may be under financial strain because of high mortgage payments, but may have a well equipped house<sup>6</sup>. Material and financial deprivation were also linked to the PI by another latent variable representing overall financial and material deprivation<sup>7</sup>. This represents the combined effects of long term and short term 'financial pressure'.

*Social isolation (SOCISOL)*: The third dimension is that of social isolation or social exclusion, a trait seen both as a manifestation or consequence of poverty and as a risk factor linked with downward spirals into poverty and marginalisation (for example, Gallie et al. 2003). Once a person is marginalised the effect becomes self-reinforcing and it is difficult to escape either in terms of labour market security or poverty. Cattell (2001) also investigates the linkages between social networks, poverty and health and has found complex relationships between the three. The BHPS includes variables indicating whether the respondent has someone who will listen to them, help them in a crisis, relax with, who appreciates them and who comforts them. In this analysis these variables were coded so that the most isolated score the highest (1 indicates they have no-one, 0 otherwise).

*Civic participation (CIVIC)*: Related to social isolation, we also include the converse concept of civic participation since the literature suggests that people in poverty will be excluded from civic participation and have weak social networks and social capital (Cattell, *ibid*, Gordon et al., 2000, Pantazis et al., 2006). Civic participation is captured in the BHPS by two variables that count the number of organizations that the respondent is a member of and the number of these organizations that he or she is active in from a list. The list of 13 organizations is as follows: political party, trade union, environmental group, parents association, tenants or residents group, religious group, voluntary service, community group, social group, sports club, women's institute, women's group, other organisation. High scores indicate higher civic participation.

---

<sup>6</sup> Factor analysis of the material deprivation and financial strain variables also separates out the two types of indicator leaving the financial strain variables as a distinct isolated factor.

<sup>7</sup> If this was not done financial strain almost completely dominated the model. In order to maintain the balance required by our pyramid of concepts this intermediate latent variable was required.

*Psychological strain (PSYSTRAIN)*: psychological well-being could be seen as a cause or a consequence of poverty (Payne, 2006). There have been a number of studies that have found an association between mental ill-health and poverty (for instance, Weich and Lewis 1998, Whitley et al. 1999). Many of the medical and psychological studies treat mental ill-health as the dependent variable including several that explore the effects of poverty on children's psychological health (see, for example, Aber et al. 1997, Evans, 2004) while much social policy research focuses on the negative effects of mental illness on incomes. We assume here that psychological strain is a component towards the bottom of our pyramid of concepts and that it can be entered into a comprehensive poverty index.

Psychological strain is measured using the General Health Questionnaire set of 12 items (GHQ12) with the 4 point scales being recoded to a binary with 1 suggesting ill-health and 0 otherwise<sup>8</sup>. Following Shevlin and Adamson (2005) we modelled psycho-social strain as a three-part model combining anxiety/depression (items 2, 5, 6, 9), social dysfunction (1, 3, 4, 7, 8) and loss of confidence (10 and 11). This produces a much better fit than using all 12 items loading on just one latent variable.

As indicated by the relative size of the coefficients in the model (Figure 3), most weight in the PI is assigned to financial pressure, itself more closely allied to financial strain than to material deprivation. The coefficients themselves are determined through the modelling process that identifies the model that best fits the data. The PI more closely reflects the measures of psychological strain than it does social isolation, while civic participation is similar in importance to social isolation but, as anticipated, has the reverse effect on the PI (with high values lowering the PI score).

### ***Model 2 covering the period 1997 to 2003***

The more detailed data available in wave 6 onwards allows us to add another dimension, 'environment' (ENVIRON) a place based aspect of poverty which captures housing and neighbourhood conditions, and to refine certain of the other dimen-

---

<sup>8</sup> The items belonging to the GHQ 1 to 12 are as follows: Able to concentrate; Lost sleep over worry; Playing a useful part in things; Capable of making decisions; Constantly under strain; Could not overcome difficulties; Enjoy day-to-day activities; Face up to problems; Unhappy or depressed; Lost confidence in self; Thinking of self as worthless; Reasonably happy are in the figures. The four point scales range from 'better than usual' to 'much less than usual'.



sions (Figure 4). The binary housing variables included in the environment dimension are: whether the house in which a respondent resided suffered from bad light, bad heating, leaks, rotting wood, and/or damp. Neighbourhood variables included more objective measures appertaining to noise from neighbours, noise from the street, crime levels and lack of space and more subjective ones recording whether the respondent liked the area or not and whether they would like to move away. Both sets of measures are coded to 1 for the most negative option and 0 otherwise to construct the environment dimension which supplants psychological strain as the second most important component in the PI index.

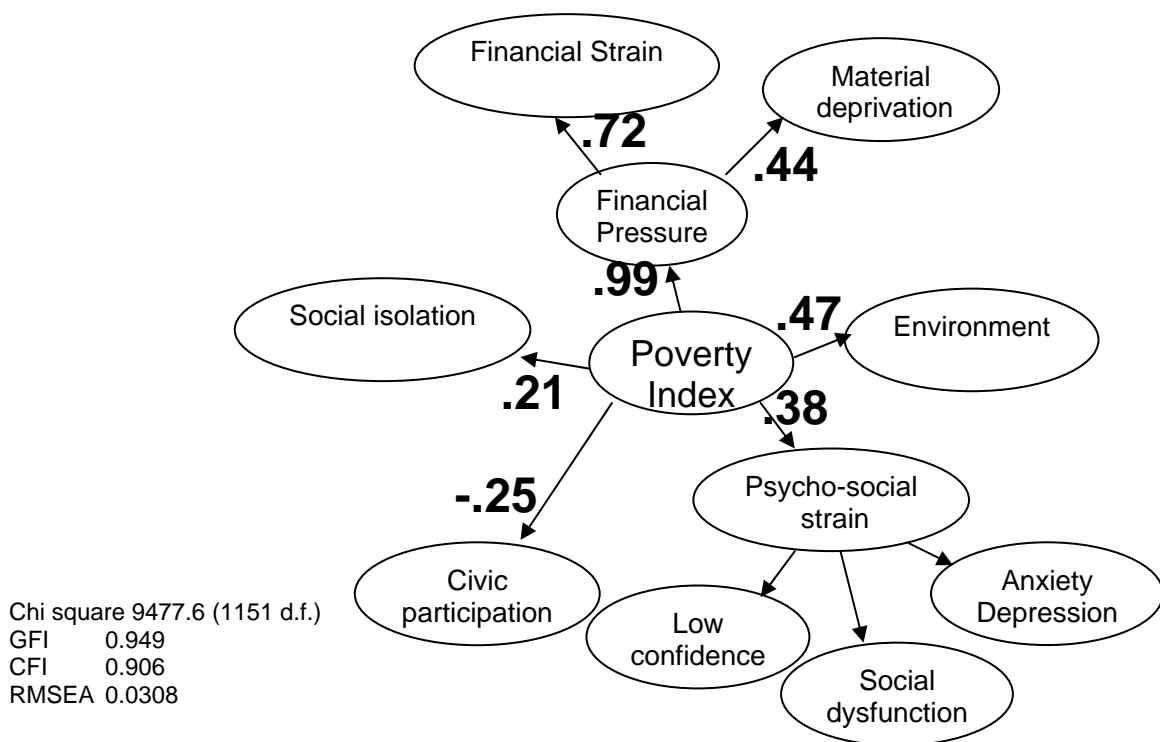


Figure 4. CFA Model 2, wave 7-13, standardised coefficients shown

The new material deprivation component additionally includes lack of access to cable/satellite TV together with whether respondents' assessment of whether their household could afford a holiday of 1 week once a year, to buy new clothes, to replace furniture or to feed visitors once a month, each coded as a binary variable (1 indicating lack of resources, 0 otherwise). Three binary variables are added to the social isolation dimension, with 1 indicating that the respondent could not go to someone outside the household to borrow money, find a job and to find help with depres-

sion (measured on a three point scale, yes/not sure/no). Financial strain, civic participation and psychological strain remain as in model 1.

The models were run in AMOS 6.0 in conjunction with SPSS 14 on wave 1 of the BHPS for Model 1 and wave 7 for Model 2. Cross-sectional weighting was applied and listwise missing data deletion applied. Some correlations were allowed between error terms to improve fit in model 2 although the coefficients do not change very much when this is done. The fit statistics are all quite respectable (GFI and CFI greater than 0.9 and RMSEA less than 0.05).

Scores for the PI were saved from both models and these form the basis of the analysis that follows. The procedure in AMOS 6.0 produces a set of linear equations that can be used to compute scores for all the latent concepts in the model based on a weighted summation of the observed variables. The outcome is an equation the coefficients of which, termed ‘factor weights’, were saved and used to compute scores for all successive waves<sup>9</sup>. Therefore, factor weights from Model 1 in wave 1 were used to compute PI scores for all waves for the first set of analyses, while factor weights from Model 2 run in wave 7 were used for the second set.

## **4. Trends in multi-dimensional poverty**

The twin methodological and substantive goals of the investigation require us first to consider the properties of the multidimensional measures. They are statistically sound, as already demonstrated by the test results, while their reliability should be ensured by holding the model structure constant over the period of the investigation, thereby avoiding the instability associated with factor analysis. In addition, though a good indicator would be expected to be moderately stable over time (since it is unreasonable to expect poverty rates would vary wildly from year to year) and it

---

<sup>9</sup> Furthermore we also fitted models using Mplus 4.0 which specifically allows categorical variables to be included (AMOS 6 assumes variables are continuous which is not true for many of our variables). In terms of the scores produced by both methods there was an extremely high correlation between the two (in the region of  $r > 0.95$ ). As AMOS allows us to use the factor score coefficients to compute scores for future waves and Mplus does not with the categorical option on, we decided to use AMOS for the rest of the analysis. Thus we obtain two linear equations of factor score coefficients from the models estimated in wave 1 for Model 1 and wave 7 for model 2. These equations allow us to calculate estimates of the PI for subsequent waves. Thus the Model 1 PI scores can be calculated in a similar fashion for waves 1, 3, 5, 7, 9 and so on and Model 2 scores can be calculated for waves 7, 9, 11 and 13 using these linear equations.

should exhibit face validity in bearing some correlation with other accepted, if partial, indicators of poverty such as income.

With the above considerations in mind, Figure 5 shows trends in conventional ‘relative’ and ‘absolute’ income poverty measures derived from the same BHPS data. The relative income measures show a pattern of stable or slightly increasing poverty during the John Major period 1992-97 and then a decline when New Labour took office from 1997 onwards while the absolute income measure, with the poverty threshold held constant in real terms, shows a continuous decline. The analogous PI based measures, on the other hand, both show steady declines throughout the whole period which is to be expected since a portion of the index is designed to capture aspects of poverty theorised to be more stable and less sensitive to short-term fluctuations in the national economic situation.

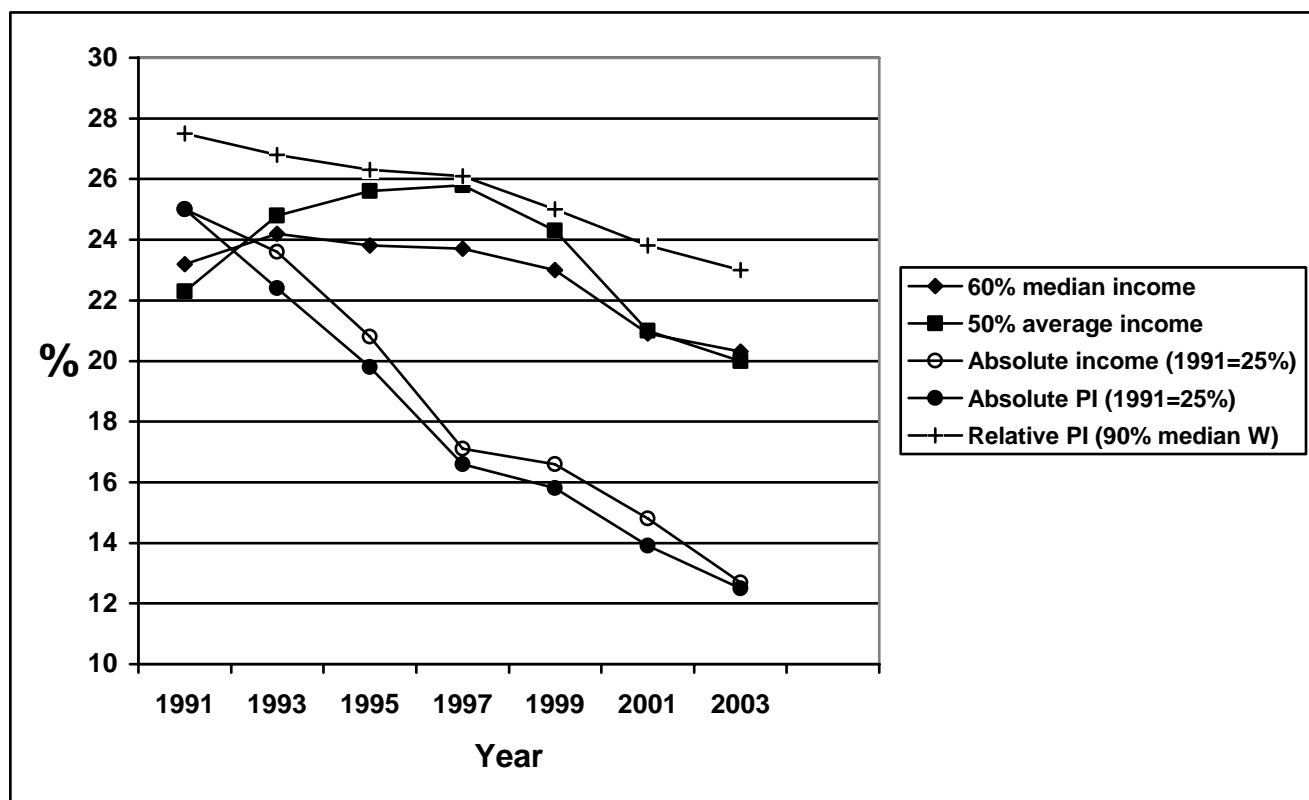


Figure 5. Percentage poor by various measures, BHPS 1991-2003

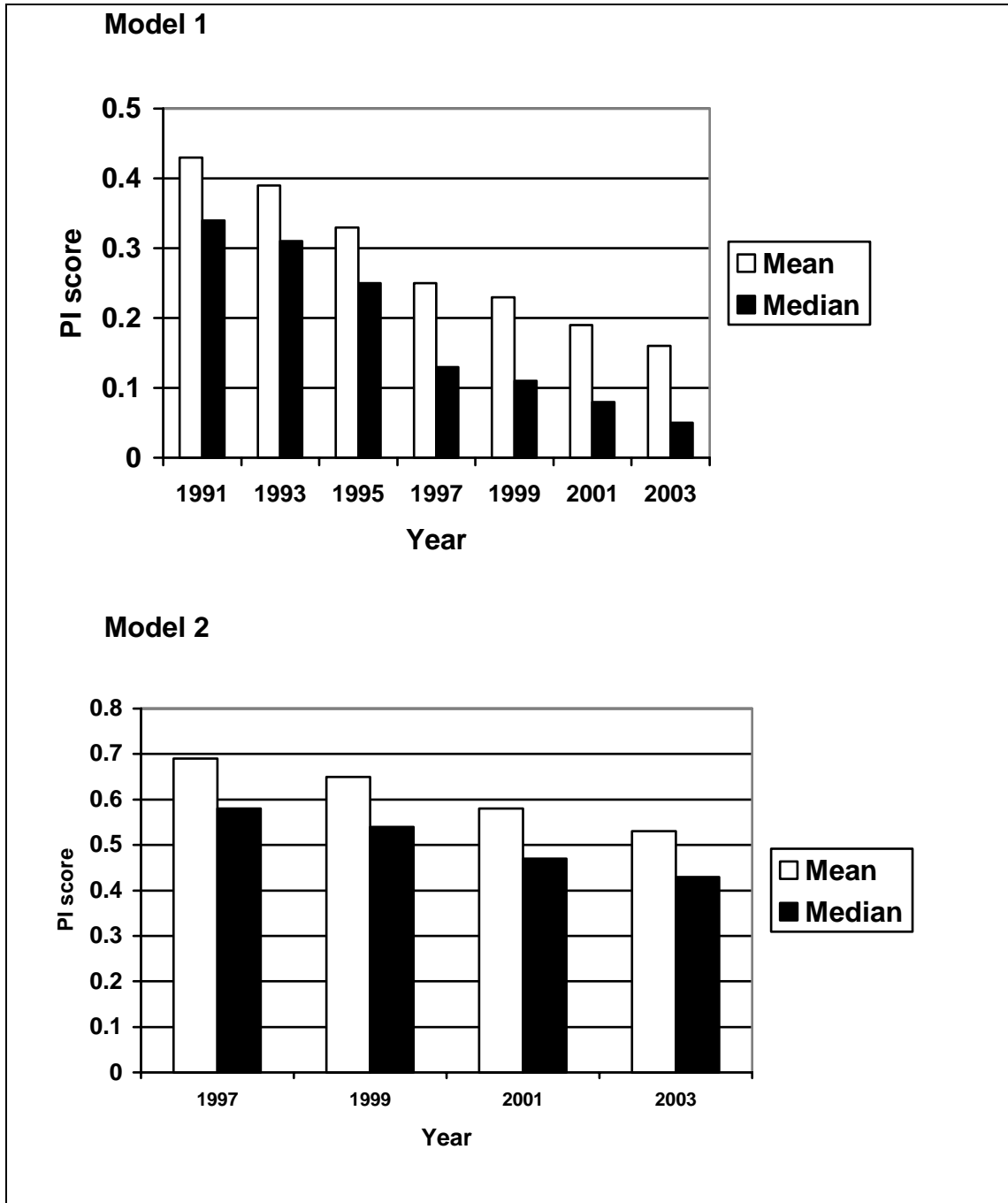


Figure 6. Mean and median PI scores from models 1 and 2

Figure 6 shows the mean and median PI score from model 1 and 2 plotted across all odd year waves from wave 1 to 13. This is analogous to plotting the inverse of the trend in average equivalised household income used in traditional measures since, unlike income, the PI is a direct measure of poverty and high scores indicate extreme poverty. The mean score in model 1 declines steadily throughout the period from around 0.43 to 0.16, consistent with the recorded fall in poverty rates and sug-

gesting a general rise in social well-being, while the differences in the mean and median show that the distribution of the PI is slightly skewed, but less so than income alone. While it is clear that average PI fell significantly in absolute terms between 1991 and 2003 and that inequalities widened, perhaps especially during the last years of the Major government, it is not possible straightforwardly to assess the strength of this fall because the scores are not standardised in any way. Moreover, since a negative score is possible, meaning that a score of zero does not indicate an absence of poverty, it cannot be presumed that the average PI more than halved.

As with income based measures, it is necessary to select a more or less arbitrary poverty threshold on the PI distribution to provide headcounts of poverty. Fixing the poverty rate at 25% in 1991, in approximate accord with poverty rates according to traditional income based measures at the time, and using the associated PI score as a poverty threshold, the proportion of adults defined to be in poverty falls gradually over the whole period from the initial 25% down to 12.9% in 2003 (Table 1, column 1 and Figure 5). Moreover, it is possible to disaggregate the contribution made to this trend by the individual components. The subsets of the coefficients used to calculate the overall score from the model were used to calculate scores for each component (Table 1 shows selected components). The material deprivation (MATDEP) and financial strain (FINSTR) components were calculated without income included (which was calculated as a separate effect, INC) while, financial pressure (FINPRES) combined the coefficients for income, material deprivation and financial strain).

The results of this analysis reveal that poverty rates based on the financial strain and material deprivation components of the index both fell much faster than income, declining by three quarters as opposed to half from 25% in 1991 to seven or eight percent in 2003. Poverty defined in terms of financial strain decreased more quickly in the early part of the period subsequently slowing as, to a less marked degree, did material deprivation, whereas the marked fall in poverty experienced as financial pressure, a product of the effects of income, financial strain and material deprivation, occurred slightly later during the last years of the Major era. The other components, psychological strain (PSYSTRAIN), civic participation (CIVIC) and social isolation (SOCISOL) all remained fairly constant throughout the period and were, additionally, less closely associated in the model with the composite poverty index. The

major falls in the index were therefore largely due to improvements in people's material well being and easing of financial strain.

Table 1					
Headcount poverty rates (%) using the PI and selected components, Model 1, fixing the 1991 rate at 25% in each case					
Year	Overall	MATDEP	FINSTR	INC	FINPRES
1991	25	25	25	25	25
1993	23	20	16	21	22
1995	20	17	13	19	18
1997	17	14	10	16	13
1999	16	12	9	17	11
2001	14	9	8	13	9
2003	12	7	6	11	7

Headcount poverty rates (%) using the PI, Model 2, fixing the 1997 rate at 25% in each case						
Year	Overall	MATDEP	FINSTR	INC	FINPRES	ENV
1997	25	25	25	25	25	25
1999	22	21	17	23	22	23
2001	19	17	15	22	18	21
2003	17	14	14	16	15	21

The more comprehensive measure that it was possible to employ during the Blair era presents a subtly different picture (see Figure 6, right hand side). Again the mean PI score fell, but with different scaling, from 0.69 in 1997 to around 0.53 in 2003, implying an overall improvement in well being. This is reflected in the headcount poverty rate which (calculated in an analogous fashion to Model 1, Table 1) fell by almost a quarter. During this period, however, while material deprivation and poverty manifest as financial strain both fell by 44 per cent and by more than other aspects of poverty, the decline in income poverty was of a similar order of magnitude (36 per cent), presumably reflecting the significant policy shift to targeting poverty through increases in benefits and tax credits (see Table 1). Psychological strain, civic participation and social isolation again remained stable but a decline in environmental or place-based poverty was evident, falling by about a sixth from 25 to 21 per cent.

Table 2

Headcount poverty rates (%) using various relative indicators, Model 1

Year	Headcount (%) based on median(W) x		
	.8	.85	.9
1991	13.5	19.2	27.5
1993	12.6	18.3	26.8
1995	11.6	17.4	26.3
1997	11.5	17.2	26.1
1999	10.9	16.7	25.0
2001	10.2	15.4	23.8
2003	9.7	14.8	23.0

Reflecting Sen's analysis of capabilities and shame, the PI used in the foregoing analysis reflects both absolute and relative conceptualisations of poverty. The income measure is deflated which removes the tendency with the absolute measures for people to be floated out of poverty simply as a result of economic growth. The measures of material deprivation are socially salient but are not weighted to take account of market penetration while indices of strain are measured in absolute terms. It is possible to assess poverty rates relative to entire distribution of PI scores in which case the PI would best be interpreted as a measure of wellbeing. To achieve this, requires a slightly modified approach since it is necessary to normalise the PI before determining the poverty threshold values (see appendix). Given that the PI has been shown to fall over the entire study period and, its inverse, well-being to rise, it comes as no surprise that the fall in poverty rates when measured against median well-being is much reduced (Table 2): a fall of between a sixth or a third rather than a half. However, it is also apparent that the more severe the measure of poverty employed, the larger the proportionate fall in the headcount rate, suggesting that changes were progressive with the poorest of the poor gaining most.

Briefly to summarise: poverty, measured as a multi-dimensional concept, fell throughout the period in both absolute and relative terms driven by reductions in material deprivation and financial strain than by increases in income per se.

## 5. The distribution of poverty

Having established trends in multi-dimensional poverty, it is appropriate for both substantive and methodological reasons to consider its distribution and correlates. Suffice, here, to focus on the association with income and its distribution by demographic group.

It will already be apparent from the structure of the measurement models and the fact that income poverty fell less markedly than other kinds of poverty, that the PI is only moderately associated with income. Typically, in any one year, the correlation between the PI and the logarithm of household equivalised income is about 0.46 with income explaining no more than around 23% of the variance of the PI. This is, of course, consistent with Ringen's (1988) assertion above that income is an indirect and imperfect measure of poverty. Nevertheless, as anticipated, when the BHPS sample is divided into deciles according to equivalised household income, the average PI score falls consistently with increasing income decile (Figure 7).

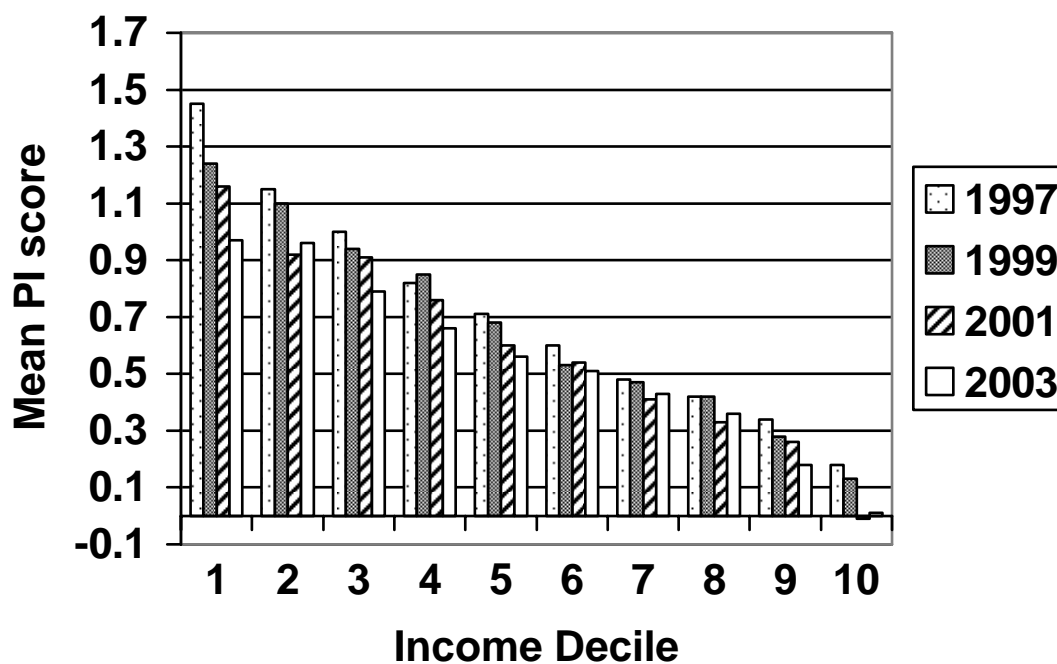


Figure 7. Mean PI from Model 2 by income deciles, 1997-2003



Figure 7 also reveals that the average PI score declined across the income distribution between 1997 and 2003. The biggest absolute falls were observed among the lowest income groups and especially within the lowest decile which, by 2003, had an average PI that did not differ statistically from that for the second decile<sup>10</sup>. Nevertheless, the proportion of people in the lowest income decile that were poor according to the poverty index fell only marginally from 1991 to 2003, suggesting that most of the fall in the index translated into a reduction in the severity of poverty as indicated by the poverty gap, the amount by which people recorded as poor in the lowest income decile fell short of the multi-dimensional poverty threshold.

Table 3 Headcounts (relative %) by various household types, Model 1, wave 1

	0.80 median	0.85 median	0.9 median
Single non-elderly	20	26	33
Single elderly	18	27	39
Couple, no children	9	13	20
Couple, dependent children	13	18	26
Couple, non-dependent children	9	12	19
Lone parent, dependent children	36	48	58
Lone parent, non-dependent children	15	22	33
2+ unrelated adults	13	23	32
Other households	11	15	20
All	13	18	26

Finally we look at the headcount rates based on the PI for different household types. These headcounts are based on the relative poverty thresholds (as used in Table 2 above). These show results that are consistent with the literature (Table 3). For example, single elderly households are generally worse off, couples are better off; single parents with dependent children are the worst off of all. These results are what we would expect from our current understanding of the wellbeing of households. Pen-

<sup>10</sup> The average PI for the second decile actually rose marginally between 2001 and 2003.

sioners and lone parents have the lowest standards of living in the UK and tend to live in the worst conditions. Couples with no children are the best off.

## **6. Conclusions**

It is argued that poverty is an inherently multidimensional concept and that reliance on one-dimensional measures can be misleading. However, it has hitherto proved impossible to devise multidimensional measures that are stable over time and which thereby facilitate the accurate measurement of trends in the poverty rate, a necessary requirement if the effects of anti-poverty programmes are to be assessed. Now, through the application of structural equation modelling, it has proved possible to create multi-dimensional indicators without the usual drawbacks of factor analytic approaches<sup>11</sup>, drawing on data from the British Household Panel Study for the period 1991 to 2003. It was also possible to disaggregate the contribution of the individual components to the overall trend in a way reminiscent of regression, namely to isolate the effect of a single dimension holding other components constant. This represents a major advance on combinatorial methods used in Ireland and proposed for the UK which cannot adequately cope with the phenomenon that a person might appear poor on one index and not on another. Data limitations necessitated two separate measures: one covering the full period; the other more sophisticated measure, restricted to the period from 1997 onwards.

The analytic method guaranteed that the multi-dimensional poverty indices were conceptually identical over time while empirical analysis demonstrated their face validity: the indices did not suffer wide fluctuations from one wave of data to the next but mirrored falls in absolute and relative poverty found by others, notably the Households Below Average Income data series. Moreover, many more models were tried than have been described here and the slightly different specifications generated

---

<sup>11</sup> Factor analysis also produced reasonably stable results and produced factors which on the whole were comparable with the latent variables in our SEMs. However, there were some fluctuations over time and moreover, no comprehensive overall index can be straightforwardly calculated using factor analysis.

consistent results emphasising the robustness of the technique;<sup>12</sup> indeed, all the models were highly correlated with one another (in the order of  $r=0.85$  or more).

The substantive findings, despite limitations further discussed below, are also of importance. They demonstrate that poverty, measured as a multi-dimensional concept, fell throughout the period without a marked turning point associated with the election of the Blair government. This was true of both absolute and relative measures. The decline was driven by falls in material deprivation but more especially by reduced financial stress particularly during the early 1990s, a time when unemployment, inflation and interest rates were all falling. Interpretation of the decline in material deprivation is complex because the commodities included in the index were fixed in 1991 (or 1997 with the inclusion of cable and satellite TV). Many of these items have become much cheaper and more widely diffused now than they would have been in 1991 with the result that one would expect the material deprivation based on these items to fall naturally during the subsequent 13 years. The implication is that in absolute terms the poor are better off in terms of possession of the indicator items but, in relative terms, may be suffering from not having access to items that have since become socially essential, such as a mobile phone.

The coefficients attached to the measurement models are also of interest in their own right, revealing the contribution of each dimension to the overall poverty score. The theoretical understanding that the effect of low income on financial pressure was mediated through short term financial stress and longer term material deprivation was confirmed by the model. Moreover, it was further refined by the observation that short-term considerations were twice as important as longer term ones in determining the level of financial pressure. Likewise, the modelling revealed the dominating importance of financial pressure although the poverty index was also particularly sensitive to manifestations of psychological stress (although these changed little over the 13 years) and to environmental factors (when these could be measured).

Finally, the analysis confirmed the now quite widely observed finding that income is only weakly associated with the other generally accepted manifestations of poverty (see, for example, Whelan et al. 2004). This reinforces Ringen's (1988) theo-

---

<sup>12</sup> We also ran models backwards (that is we estimated models in wave 13 and calculated scores based on these for all waves). We got essentially the same results. Scores were extremely highly correlated.

retical arguments and underlines the need to take a multidimensional approach seriously and develop the tools necessary for the accurate measurement of poverty and related phenomena. The Baulch pyramid is a useful starting point along this road when coupled with the advanced statistical techniques becoming available.

The models and technique used here is not completely devoid of problems, nor is it devoid of further opportunities. The latent variables in the models are slightly correlated with each other indicating that there is sometimes overlap between the concepts in the model. This is not a problem per se, but does cause problems when factor weights are used to construct the PI in a simply additive fashion. As noted in the introduction, there is no clear cut way to separate the elements of the pyramid into pure forms and any attempt to measure these multidimensional concepts (especially involving those concepts towards the bottom of the pyramid) will inevitably encounter these issues. This is mediated in our approach by creating models that assign less weight to those items at the bottom of the pyramid than those at the top.

Turning to future potential, this is considerable. First, better measures are already available in new datasets such as FACS although their innovation makes them less suitable more measuring long term trends. Secondly, there are newly emerging techniques such as such as MIMIC (multiple indicators, multiple causes models) which allow for ordinal and censored variables, and permit more controls and interactions to be applied within the SEM. Perhaps most importantly, full structural models can be used to test causal linkages between the dimensions of poverty specified above and hence to begin to model trajectories through the various varieties and manifestations of poverty as, for example, seen by Walker and Park (1998). Latent growth curve models allow the dynamic aspects of poverty to be investigated further and multilevel models could help disentangle individual from household processes. These modelling techniques will form the basis of the next stage in the research.

## References

- Aber, L., Bennett, N. G., Conley, D. C. and Li, J. (1997), 'The effects of poverty on child health and development', Annual Review of Public Health, 18: 463-83.
- Atkinson, A. B. (1995), Incomes and the Welfare State: Essays on Britain and Europe, Cambridge: Cambridge University Press
- Baulch, B. (1996), 'The new poverty agenda: a disputed consensus', IDS Bulletin, 27: 1-10.
- Booth, C. (1892) Life and Labour of the People in London (1889–1903), London: Macmillan.
- Blair, T. (1999) 'Beveridge Revisited: a welfare state for the 21<sup>st</sup> century', Pp.7-18 in R. Walker (ed.), Ending Child Poverty: Popular welfare for the 21<sup>st</sup> Century? Bristol: Policy Press.
- Byrne, B. (2001), Structural Equation Modelling with AMOS, Mahwah: Lawrence Erlbaum Associates.
- Calandrino, M. (2003), Low-Income and Deprivation in British Families, London Department for Work and Pensions: Working Paper 10.
- Callan, S. et al. (2006), The state of the nation report: Fractured families, Social Policy Justice Group, December.
- Callan T., Nolan, B. and Whelan, C. (1993), 'Resources, deprivation and the measurement of poverty', Journal of Social Policy, 22(2): 141-172
- Cattell, V. (2001), 'Poor people, poor places, and poor health: the mediating role of social networks and social capital', Social Science and Medicine, 52: 1501-1516.
- Dewilde, C. (2004), 'The Multidimensional Measurement of Poverty in Belgium and Britain: A Categorical Approach', Social Indicators Research, 68(3): 331-369.
- DWP (2003), Measuring Child Poverty, London, DWP.
- DWP (2006a), Opportunity for all Eighth Annual Report 2006, Indicators document. Presented to Parliament by the Secretary of State for Work and Pensions by Command of Her Majesty October 2006, Norwich: Stationary Office Cm 6915-ii.
- DWP (2006b), Households below Average Income 2004/05, London: DWP.
- Ermisch, J., Francesconi, M. and Pevalin, D.J. (2001), Outcomes for Children of Poverty, DWP Research Report No. 158, Department of Work and Pensions. Leeds: CDS.
- Evans, D. W. (2004), 'The environment of childhood poverty', American Psychologist, 59(2): 77-92.
- Fitzpatrick, S. (2004), 'Poverty of Place', keynote address given to JRF Centenary Conference, York, 14<sup>th</sup> December.
- Fouarge, D. and Layte, R. (2005), 'Welfare regimes and poverty dynamics: The duration and recurrence of poverty spells in Europe', Journal of Social Policy, 34(3): 407-426
- Gallie, D., Paugam, S. and Jacobs, S. (2003), 'Unemployment, poverty and social isolation: Is there a vicious circle of social exclusion?' European Societies, 5(1): 1-32.
- Gordon, D. and Pantazis, C. (1997), Breadline Britain in the 1990s, Aldershot: Ashgate.
- Gordon, D. *et al.* (2000), Poverty and Social Exclusion in Britain, York: Joseph Rowntree Foundation.

- Haase, T. and Pratschke, J. (2005), Deprivation and its Spatial Articulation in the Republic of Ireland, Dublin: NDP.
- Hobfoll, S. (1998), Stress, Culture, and Community: The Psychology and Philosophy of Stress, London: Plenum Press.
- Jenkins, S.P. and Cappellari, L. (2007), 'Summarising multiple deprivation indicators', Chapter 8, pp. 166-184, in Inequality and Poverty Re-examined, S.P. Jenkins and J. Micklewright (eds), Oxford University Press, Oxford, 2007, forthcoming.
- Jenkins, S.P. and Rigg, J. (2001), The Dynamics of Poverty in Britain, DWP Research Report No. 157, Department of Work and Pensions. Leeds: CDS.
- Kempson, E. (1996), Life on a Low Income, York: York Publishing Service
- Klein, R. (2005), Principles and Practice of Structural Equation Modeling, 2nd ed., New York: Guilford Press.
- Kuklys, W. (2004), 'Measuring standards of living in the UK – an application of Sen's functioning approach using structural equation models', Working Paper on Strategic Interaction 11-2004, Max Planck Institute, Jena.
- Layte, R., Nolan, B. and Whelan, C. (2000), 'Targeting Poverty: Lessons from Monitoring Ireland's National Anti-Poverty Strategy', Journal of Social Policy, 29(4): 553–575.
- Layte, R., Nolan, B. and Whelan, C. (2001), Reassessing Income and Deprivation: Approaches to the Measurement of Poverty, Dublin: ESRI.
- Layte, R. and Whelan, C. (2003), 'Moving in and out of poverty: the impact of welfare regimes on poverty dynamics in the EU', European Societies, 5(2): 167-191.
- Lister, R. (2004), Poverty, Cambridge: Polity Press.
- Loehlin, J. (1992), Latent Variable Models: An introduction to Factor, Path and Structural Analysis. Hillsdale: Erlbaum.
- Mack, J. and Lansley, S. (1985), Poor Britain, London: Allen and Unwin.
- Maggio, G. (2004), 'Multidimensional Analysis Of Poverty Dynamics In Great Britain', Working Papers of the Institute for Social and Economic Research, Paper 2004-10. Colchester: University of Essex.
- Mayhew, H. (1851), London Labour and London Poor, London: Griffin, Bohn, and Company.
- MSD (2002), Direct Measurement of Living Standards: The New Zealand ELSI Scale, Wellington: New Zealand Ministry of Social Development.
- Nolan, B. and Whelan, C. (1996), Resources, Deprivation and Poverty, Oxford: Clarendon Press.
- Pantazis, C., Gordon, D. and Levitas, R. (eds.) (2006), Poverty and Social Exclusion in Britain: The Millennium Survey, Bristol: The Policy Press.
- Payne, S. (2006), 'Mental health, poverty and social exclusion', in Pantazis, C., Gordon, D. and Levitas R (eds.), Poverty and Social Exclusion in Britain: The Millennium Survey, Bristol: The Policy Press.
- Piachaud, D. (1981), 'Peter Townsend and the holy grail', New Society, 57: 419-22.
- Piachaud, D. (1987), 'Problems in the definition and measurement of poverty', Journal of Social Policy, 16: 147-64
- Rigg, J. and Sefton, T. (2006), 'Income dynamics and the life cycle', Journal of Social Policy, 35(3): 411-435.
- Ringen, S. (1988), 'Direct and indirect measures of poverty', Journal of Social Policy, 17(3): 351-365.
- Rowntree, S. (1901), Poverty: A Study of Town Life, London: Macmillan.
- Sen, A. (1999) Commodities and Capabilities, Delhi: Oxford University Press

- Shevlin, M. and Adamson, G. (2005), 'Alternative factor models and factorial invariance of the GHQ-12: A large sample analysis using confirmatory factor analysis', *Psychological Assessment*, 17(2): 231-236.
- Smith, A. (1776), An Inquiry into the Nature and Causes of the Wealth of Nations, Online edition © 1995-2005 Adam Smith Institute: <http://www.adamsmith.org/smith/won/won-b5-c2-article-4-ss2.html>
- Tomlinson, M., Walker, R. and Williams, G. (2007), 'The relationship between poverty and child well-being: A structural equation modelling approach', Mimeo, Department of Social Policy and Social Work, University of Oxford.
- Townsend, P. (1979), Poverty in the United Kingdom, Harmondsworth: Allen Lane.
- Townsend, P. and Abel-Smith, B. (1965), The Poor and the Poorest, London: Bell.
- Walker, R. with Ashworth, K. (1994) Poverty Dynamics: Issues and Examples, Aldershot: Avebury.
- Walker, R. and Collins, C. (2003), 'Families of the poor' in Scott, J., Treas, J. and Richards, M. (eds.) Blackwell Companion on the Sociology of the Family, Malden: Blackwell Publishers Inc.
- Walker, R. and Park, J. (1998), 'Unpicking poverty', pp. 29-52 in C. Oppenheim (ed.) An Inclusive Society, London: IPPR.
- WBG (2005), Women's and Children's Poverty: Making the links, London: Women's Budget Group.
- Weich, S. and Lewis, G. (1998), 'Poverty, unemployment and common mental disorders: Population based cohort study', *British Medical Journal*, 317: 115-119.
- Whelan, C., Layte, R. and Maitre, B. (2002), 'Multiple deprivation and persistent poverty in the European Union', *Journal of European Social Policy*, 12(2): 91-105.
- Whelan, C., Layte, R. and Maitre, B. (2004), 'Understanding the mismatch between income poverty and deprivation: A dynamic comparative analysis', *European Sociological Review*, 20(4): 287-302.
- Whelan, C. and Maitre, B. (2005), 'Vulnerability and multiple deprivation perspectives on economic exclusion in Europe: A latent class analysis', *European Societies*, 7(3): 423-450.
- Whelan, C. and Maitre, B. (2007a), 'Measuring material deprivation with EU-SILC: Lessons from the Irish survey', *European Societies*, 9(2): 147-173.
- Whelan, C. and Maitre, B. (2007b), 'Levels and patterns of material deprivation in Ireland: After the Celtic Tiger', *European Sociological Review*, 23(2): 139-154.
- Whitley, E., Gunnell, D., Dorling, D. and Smith, G. D. (1999), 'Ecological study of social fragmentation, poverty and suicide', *British Medical Journal*, 319: 1034-1037.
- Willetts, M. (2006), 'Measuring child poverty using material deprivation: possible approaches', Working paper No. 28, Department for Work and Pensions, HMSO, ISBN 1841239763.

## Appendix:

### Calculating relative poverty rates using the Poverty Index

The traditional way of calculating relative poverty is to use some fraction of median (or mean) income as the cut off point and then count everyone below this as ‘poor’. With respect to the PI there are problems with this approach:

In order to adequately measure relative poverty headcounts it is necessary to have a fixed baseline below which no-one can fall. With income measures this is straightforward as no-one can have a negative income and so relative indicators based on a fraction of mean and median income then make sense. With the PI, there is no effective zero position which leads to a second problem in that, unlike when using income, negative values for the PI are possible. Thus calculating cut-offs based on the mean and median is no longer valid over time (although threshold values of the PI are still possible to calculate absolute poverty figures).

Thus the PI needs to be ‘normalised’ before *relative* poverty headcounts can be calculated. The strategy adopted in the paper was to calculate a maximum value of the PI for the model  $PI_{max}$ . This is the highest score anyone can actually have (i.e. with no income, no possessions, maximum stress, no social contact, no civic participation, maximum financial strain etc.). The PI was then transformed into a normalised well-being index W:

$$W = (-PI) + PI_{max}$$

This essentially reverses the distribution and sets a minimum at zero. This effectively creates an index of well-being where a person who is as badly off as one can be will always have a score of zero ( $W=0$ ). Everyone else will be measured relative to that hypothetical person. No-one can have a negative score.

Relative poverty rates were then calculated based on median fractions of the mean of ‘the ‘well-being’ index W. Means and medians of W gradually increase over time and the relative poverty rates slowly fall.

Model 1:

Year	Mean W	Median W	headcount (%) based on median(W) x		
			.8	.85	.9
1991	4.36	4.45	13.5	19.2	27.5
1993	4.40	4.48	12.6	18.3	26.8
1995	4.46	4.55	11.6	17.4	26.3
1997	4.53	4.65	11.5	17.2	26.1
1999	4.55	4.66	10.9	16.7	25.0
2001	4.59	4.70	10.2	15.4	23.8
2003	4.63	4.73	9.7	14.8	23.0