

SDR 108/2012

11 July 2012

School Census Results, 2012

This Statistical First Release is based upon information collected by the Schools' Census in January 2012. It reports information for the number of pupils by age, gender, free school meal eligibility, ethnicity and SEN (special educational needs), together with information on the number of schools, teachers and support staff.

The tables provide all Wales information for each category listed, plus a breakdown to local authority (LA) level for schools, pupils, teachers and support staff.

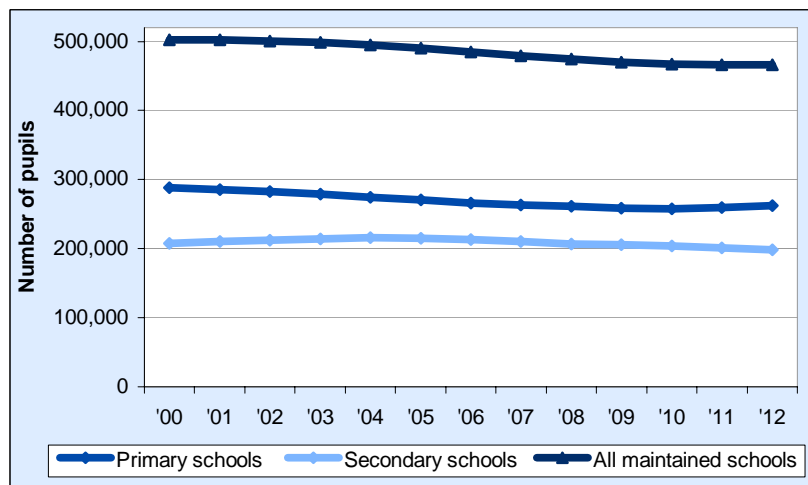
In previous years, provisional school census results were made available in July with final results available in September. However, due to a shortening of the validation period for local authorities, this release provides final results. Further information may be requested from school.stats@wales.gsi.gov.uk

Key results from the January 2012 school census

Schools and pupils (Tables 1-6)

- In January 2012 there were 22 nursery, 1,412 primary, 221 secondary schools and 43 special schools. Of these, 461 primary and 55 secondary schools were classified as Welsh medium. There were 66 independent schools. Overall, there were 25 fewer LA maintained schools than at January 2011. The number of independent schools remained the same.
- The total number of pupils (headcount) in LA maintained nursery, primary, secondary and special schools was 465,943, a fall of 229 pupils (0.05 per cent) since January 2011.

Chart 1: Number of pupils in maintained schools



- Since 2000, the number of pupils in LA maintained schools has decreased year on year.
- Numbers of pupils in secondary schools increased from 2000 to 2004 and have decreased year on year since then.
- Numbers of pupils in primary schools decreased from 2000 to 2010 but have increased year on year since then.

Statistician: Stephen Hughes
Next update: June 2013 (provisional)

Tel: 029 2082 5060

E-mail: school.stats@wales.gsi.gov.uk

Twitter: www.twitter.com/statisticswales | www.twitter.com/ystadegaucymru

Cyhoeddwyd gan Y Gwasanaethau Gwybodaeth a Dadansoddi
 Llywodraeth Cymru, Parc Cathays, Caerdydd, CF10 3NQ
 Ffôn – Swyddfa'r Wasg **029 2089 8099**, Ymholiadau Cyhoeddus **029 2082 3332**
www.cymru.gov.uk/ystadegau

Issued by Knowledge and Analytical Services
 Welsh Government, Cathays Park, Cardiff, CF10 3NQ
 Telephone – Press Office **029 2089 8099**, Public Enquiries **029 2082 5050**
www.wales.gov.uk/statistics



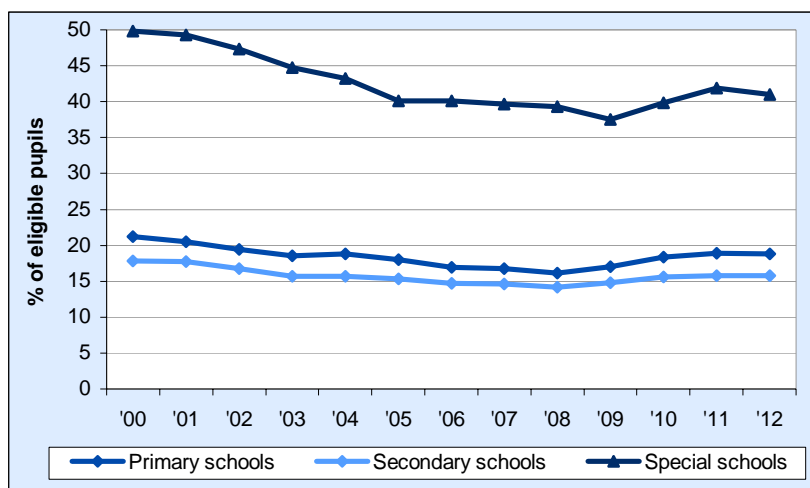
Llywodraeth Cymru
 Welsh Government

Teachers and support staff (Tables 7-10)

- There were 24,600.7 full-time equivalent (FTE) qualified teachers in LA maintained schools, a fall of 253.6 (1.0 per cent) over the year.
- The pupil teacher ratio for all LA maintained schools was 18.4 compared with 18.2 in 2011.
- There were 22,294.5 support staff (FTE) in LA maintained schools, an increase of almost 1,000 staff in the last year and continuing the trend of recent years. The introduction of the Foundation Phase and the Teacher Workload Agreement are the two main drivers behind the increase in support staff.

Free school meals (Table 11)

Chart 2: Percentage of pupils known to be eligible for free school meals



- The percentage of pupils known to be eligible for free school meals in primary, secondary and special schools has fluctuated over the last decade, generally decreasing from 2000 to 2008 and then increasing year on year to 2011. There was a slight decrease from 2011 to 2012.
- This increase may be related to that seen in the number of claimants of Jobseeker's Allowance in Wales, which is one of the criteria for eligibility for free meals.

- The percentage of pupils of compulsory school age in LA maintained schools known to be eligible for free school meals in 2012 was:

Primary schools	20.6 per cent	- down from 21.1 per cent in 2011
Secondary schools	17.4 per cent	- down from 17.7 per cent in 2011
Special schools	42.8 per cent	- down from 44.9 per cent in 2011

Ethnicity (Table 12)

- In LA maintained schools 91.2 per cent of pupils (aged 5 and over) were classified as White British, 7.9 per cent were of minority ethnic origin and 0.9 per cent were unknown or not stated.

Pupils with Special Educational Needs (SEN) (Tables 13 - 14)

- In January 2012 13,426 pupils in schools in Wales had statements of SEN, 416 less pupils than in January 2011.
- In LA maintained sectors:
 - Primary schools:** 1.5 per cent of pupils had statements of SEN and a further 20.1 per cent of pupils had special educational needs but no statement.
 - Secondary schools:** 2.6 per cent of pupils had statements of SEN and a further 18.6 per cent of pupils had special educational needs but no statement
 - Special schools:** 94.6 per cent of pupils had statements of SEN and 5.4 per cent of pupils had special educational needs but no statement.
- In the **Independent** sector 3.8 per cent of pupils had statements of SEN and a further 11.3 per cent of pupils had special needs but no statement.

Contents

	Page
<u>Schools and Pupils</u>	
Table 1	Number of schools, by local authority, January 2012 4
Table 2	Welsh medium schools and pupils, by local authority, January 2012 5
Table 3	Number of pupils, by age group, in nursery, primary, secondary and special schools 5
Table 4	Number of pupils, full-time and part-time, by age and sex, in nursery, primary, secondary and special schools, January 2012 6
Table 5	Pupil numbers, by local authority, January 2012 7
Table 6	Full-time equivalent pupils, by local authority, January 2012 7
<u>Teachers and support staff</u>	
Table 7	Number of qualified teachers, by local authority, January 2012 8
Table 8	Full-time equivalent qualified teachers, by local authority, January 2012 9
Table 9	Pupil teacher ratios within schools, by local authority, January 2012 10
Table 10	Full-time equivalent support staff, by local authority, January 2012 10
<u>Free school meals</u>	
Table 11	School meal arrangements in nursery, primary, secondary and special schools 11
<u>Ethnicity</u>	
Table 12	Number of pupils aged 5 or over, by ethnic background, January 2012 12
<u>Pupils with Special Educational Needs (SEN)</u>	
Table 13	Pupils with special educational needs in independent schools, by major need, January 2012 13
Table 14	Pupils with a statement of special educational needs in maintained schools, by type of school and major need, January 2012 14
Table 15	Pupils with a special educational need but no statement, in maintained schools, by type of school and major need, January 2012 14
Table 16	All pupils with special educational needs in maintained schools, by type of school and major need, January 2012 15
Key Quality Information	16

Schools and Pupils

Here are the key points about schools and pupils:

- The local authority with the most **schools** was Rhondda Cynon Taf with 138, and the local authority with the fewest was Merthyr Tydfil with 31 schools. ([Table 1](#))
- Gwynedd had the most **Welsh medium primary schools** with 101, and the local authority with the fewest was Blaenau Gwent with 1 school. Gwynedd had the most **Welsh medium secondary schools** with 14, and there were 4 local authorities with no Welsh medium secondary schools: Merthyr Tydfil, Blaenau Gwent, Monmouthshire and Newport. ([Table 2](#))
- Of the **pupils aged under 5** in maintained schools in Wales, the majority of them were attending school on a full time basis. ([Table 4](#))
- Although the total **number of pupils** has declined over the last 5 years, the number aged under 5 has increased, reflecting the recent upturn in birth rates. ([Table 3](#))
- Over the last decade, the total **number of pupils in primary schools** in Wales has decreased year-on-year, but there was an increase from January 2010 to January 2012, the first increase in the sector since 1998. ([Table 4](#))
- The **number of pupils** in each local authority ranged between 9,316 in Merthyr Tydfil, to 50,954 in Cardiff. ([Table 5](#))
- The number of **full-time equivalent pupils in schools** was highest in Cardiff at 48,689.0 pupils and lowest in Merthyr Tydfil at 9,170.5 pupils. ([Table 6](#))

Table 1: Number of schools, by local authority, January 2012

	Maintained schools					Independent	All schools
	Nursery	Primary	Secondary	Special	Total		
Isle of Anglesey	0	48	5	1	54	1	55
Gwynedd	0	102	14	3	119	3	122
Conwy	0	60	7	1	68	2	70
Denbighshire (a)	0	51	8	2	61	4	65
Flintshire	1	72	12	2	87	2	89
Wrexham	1	60	9	1	71	3	74
Powys	0	99	13	3	115	8	123
Ceredigion	0	57	7	0	64	1	65
Pembrokeshire	0	61	8	1	70	4	74
Carmarthenshire	1	108	14	2	125	7	132
Swansea	0	83	15	2	100	5	105
Neath Port Talbot	0	68	11	3	82	0	82
Bridgend	2	50	9	2	63	4	67
The Vale of Glamorgan	3	48	8	3	62	3	65
Rhondda Cynon Taf	3	112	19	4	138	0	138
Merthyr Tydfil	3	23	4	1	31	0	31
Caerphilly	0	75	14	1	90	1	91
Blaenau Gwent	0	27	5	1	33	0	33
Torfaen	2	29	7	1	39	0	39
Monmouthshire	0	32	4	1	37	7	44
Newport	3	49	8	1	61	1	62
Cardiff	3	98	20	7	128	10	138
Wales	22	1,412	221	43	1,698	66	1,764
Wales – January 2011	23	1,435	222	43	1,723	66	1,789
Wales – January 2010	25	1,462	223	43	1,753	64	1,817
Wales – January 2009	28	1,478	223	44	1,773	60	1,833
Wales – January 2008	28	1,509	222	44	1,803	66	1,869

(a) St Brigids School is counted in both the primary and secondary schools establishment numbers.

Table 2: Welsh medium schools and pupils, by local authority, January 2012

	Welsh medium Primary schools (a)		Welsh medium Secondary schools (b)	
	Schools	Pupils	Schools	Pupils
Isle of Anglesey	47	5,227	4	3,304
Gwynedd	101	9,562	14	7,423
Conwy	25	2,254	2	1,440
Denbighshire	19	2,147	3	3,141
Flintshire	5	827	1	558
Wrexham	7	1,415	1	800
Powys	23	2,870	5	3,053
Ceredigion	51	3,962	6	3,315
Pembrokeshire	19	2,898	1	1,004
Carmarthenshire	77	9,378	6	5,539
Swansea	10	2,809	2	1,479
Neath Port Talbot	11	2,197	1	996
Bridgend	4	1,082	1	430
The Vale of Glamorgan	7	1,529	1	832
Rhondda Cynon Taf	16	4,771	4	3,258
Merthyr Tydfil	2	576	0	0
Caerphilly	11	2,608	1	1,397
Blaenau Gwent	1	310	0	0
Torfaen	3	737	1	965
Monmouthshire	2	290	0	0
Newport	3	546	0	0
Cardiff	17	4,451	2	2,328
Wales	461	62,446	56	41,262
Wales – January 2011	467	61,073	56	41,764
Wales – January 2010	476	60,318	58	43,432
Wales – January 2009	487	59,989	55	41,916

(a) Primary schools include Welsh Medium, Dual stream and Transitional schools.

(b) Secondary schools include Welsh medium and Bilingual schools.

Further information on the definition of Welsh medium schools may be found via the link below:

<http://wales.gov.uk/topics/educationandskills/publications/guidance/definingschools?lang=en>

Table 3: Number of pupils, by age group, in nursery, primary, secondary and special schools (a) (b)

		2008	2009	2010	2011	2012
Nursery						
Pupils aged: Under 5		1,787	1,791	1,672	1,572	1,530
5 and over		0	0	0	0	0
All ages		1,787	1,791	1,672	1,572	1,530
Primary						
Pupils aged: Under 5		62,915	63,985	65,421	67,721	69,766
5 to 10		198,510	194,189	191,907	191,359	192,293
11 to 15		170	129	107	101	76
16 and over		12	11	10	8	9
All ages		261,607	258,314	257,445	259,189	262,144
Secondary						
Pupils aged: Under 5		0	0	0	0	0
5 to 10		29	15	6	5	19
11 to 15		178,597	176,299	173,914	171,142	168,204
16 and over		28,310	29,107	29,987	30,083	29,792
All ages		206,936	205,421	203,907	201,230	198,015
Special						
Pupils aged: Under 5		201	201	198	217	213
5 to 10		1,060	1,018	1,032	1,008	1,062
11 to 15		2,108	2,164	2,116	2,117	2,111
16 and over		671	732	771	839	868
All ages		4,040	4,115	4,117	4,181	4,254
Nursery, Primary, Secondary and Special						
Pupils aged: Under 5		64,903	65,977	67,291	69,510	71,509
5 to 10		199,599	195,222	192,945	192,372	193,374
11 to 15		180,875	178,592	176,137	173,360	170,391
16 and over		28,993	29,850	30,768	30,930	30,669
All ages		474,370	469,641	467,141	466,172	465,943

(a) At January each year.

(b) Age as at 31 August in the previous year.

Table 4: Number of pupils, full-time and part-time, by age and sex, in nursery, primary, secondary and special schools, January 2012 (a)

Age as at 31 August 2011	Nursery Schools					Primary Schools					Secondary Schools			Special Schools				
	Full-time		Part-time		Total	Full-time		Part-time		Total	Full-time		Total	Full-time		Part-time		Total
	Boys	Girls	Boys	Girls		Boys	Girls	Boys	Girls		Boys	Girls		Boys	Girls	Boys	Girls	
Pupils aged:																		
2 and under	32	36	139	138	345	406	430	2,433	2,255	5,524	0	0	0	0	0	3	5	8
3 (born 1/4/07 to 31/8/07)	76	67	197	164	504	1,256	1,208	5,004	4,762	12,230	0	0	0	5	2	13	12	32
3 (born 1/1/07 to 31/3/07)	44	36	116	102	298	992	965	2,832	2,845	7,634	0	0	0	8	6	7	1	22
3 (born 1/9/06 to 31/12/06)	47	50	135	138	370	1,819	1,699	3,532	3,397	10,447	0	0	0	11	8	14	7	40
4 (born 1/4/06 to 31/8/06)	6	7	0	0	13	7,326	7,128	18	13	14,485	0	0	0	34	13	0	1	48
4 (born 1/1/06 to 31/3/06)	0	0	0	0	0	4,158	3,887	3	3	8,051	0	0	0	16	5	0	1	22
4 (born 1/9/05 to 31/12/05)	0	0	0	0	0	5,809	5,574	3	9	11,395	0	0	0	31	10	0	0	41
Total Under 5	205	196	587	542	1,530	21,766	20,891	13,825	13,284	69,766	0	0	0	105	44	37	27	213
5	0	0	0	0	0	16,995	16,229	0	0	33,224	0	0	0	105	48	0	0	153
6	0	0	0	0	0	16,881	15,973	0	0	32,854	0	0	0	86	48	0	0	134
7	0	0	0	0	0	16,514	15,553	0	0	32,067	0	0	0	131	57	0	0	188
8	0	0	0	0	0	16,140	15,390	1	0	31,531	0	0	0	121	71	0	0	192
9	0	0	0	0	0	15,917	14,955	0	0	30,872	0	0	0	132	61	0	0	193
10	0	0	0	0	0	16,307	15,436	2	0	31,745	7	12	19	147	55	0	0	202
Total 5 to 10	0	0	0	0	0	98,754	93,536	3	0	192,293	7	12	19	722	340	0	0	1,062
11	0	0	0	0	0	48	20	0	0	68	16,303	15,592	31,895	268	92	0	0	360
12	0	0	0	0	0	1	3	0	0	4	16,888	16,210	33,098	282	108	0	0	390
13	0	0	0	0	0	0	0	1	0	1	17,375	16,684	34,059	319	109	0	0	428
14	0	0	0	0	0	0	0	0	0	0	18,064	17,314	35,378	369	129	0	0	498
15	0	0	0	0	0	1	2	0	0	3	17,208	16,566	33,774	311	124	0	0	435
Total 11 to 15	0	0	0	0	0	50	25	1	0	76	85,838	82,366	168,204	1,549	562	0	0	2,111
16	0	0	0	0	0	1	1	0	0	2	7,503	8,290	15,793	217	106	0	0	323
17	0	0	0	0	0	2	2	0	0	4	5,624	6,911	12,535	193	127	0	0	320
18	0	0	0	0	0	2	1	0	0	3	692	622	1,314	146	79	0	0	225
19+	0	0	0	0	0	0	0	0	0	0	50	100	150	0	0	0	0	0
Total 16 to 19+	0	0	0	0	0	5	4	0	0	9	13,869	15,923	29,792	556	312	0	0	868
Compulsory School Age	0	0	0	0	0	98,804	93,561	4	0	192,369	85,845	82,378	168,223	2,271	902	0	0	3,173
All ages	205	196	587	542	1,530	120,575	114,456	13,829	13,284	262,144	99,714	98,301	198,015	2,932	1,258	37	27	4,254

(a) Age as at 31 August 2011.

Table 5: Pupil numbers, by local authority, January 2012 (a)

	Maintained schools					Independent	All schools
	Nursery	Primary	Secondary	Special	Total		
Isle of Anglesey	0	5,413	4,097	63	9,573	85	9,658
Gwynedd	0	9,681	7,423	139	17,243	371	17,614
Conwy	0	8,657	7,283	167	16,107	840	16,947
Denbighshire (a)	0	8,241	7,247	249	15,737	415	16,152
Flintshire	42	13,341	10,195	233	23,811	24	23,835
Wrexham	46	12,167	6,667	255	19,135	21	19,156
Powys	0	10,249	8,490	295	19,034	465	19,499
Ceredigion	0	5,026	4,629	0	9,655	8	9,663
Pembrokeshire	0	10,324	7,872	127	18,323	196	18,519
Carmarthenshire	73	15,014	11,946	118	27,151	738	27,889
Swansea	0	20,885	14,030	162	35,077	439	35,516
Neath Port Talbot	0	12,149	8,370	188	20,707	0	20,707
Bridgend	68	12,314	9,587	399	22,368	433	22,801
The Vale of Glamorgan	241	11,763	9,680	261	21,945	214	22,159
Rhondda Cynon Taf	107	21,478	17,078	470	39,133	0	39,133
Merthyr Tydfil	168	5,223	3,786	139	9,316	0	9,316
Caerphilly	0	16,639	12,070	128	28,837	131	28,968
Blaenau Gwent	0	6,056	3,994	98	10,148	0	10,148
Torfaen	146	8,052	7,518	89	15,805	0	15,805
Monmouthshire	0	6,612	5,092	47	11,751	1,510	13,261
Newport	276	13,198	10,542	117	24,133	626	24,759
Cardiff	363	29,662	20,419	510	50,954	2,413	53,367
Wales	1,530	262,144	198,015	4,254	465,943	8,929	474,872
Wales – January 2011	1,572	259,189	201,230	4,181	466,172	9,088	475,260
Wales – January 2010	1,672	257,445	203,907	4,117	467,141	9,222	476,363
Wales – January 2009	1,791	258,314	205,421	4,115	469,641	9,302	478,943
Wales – January 2008	1,787	261,607	206,936	4,040	474,370	9,555	483,925

(a) St Brigids School has pupils of both primary and secondary level who are included in the appropriate columns.

Table 6: Full-time equivalent pupils, by local authority, January 2012 (a)

	Maintained schools					Independent	All schools
	Nursery	Primary	Secondary	Special	Total		
Isle of Anglesey	0.0	5,116.0	4,097.0	62.5	9,275.5	60.5	9,336.0
Gwynedd	0.0	9,117.0	7,423.0	138.5	16,678.5	371.0	17,049.5
Conwy	0.0	8,112.0	7,283.0	165.0	15,560.0	840.0	16,400.0
Denbighshire (a)	0.0	7,688.5	7,247.0	249.0	15,184.5	415.0	15,599.5
Flintshire	21.0	12,478.0	10,195.0	229.5	22,923.5	24.0	22,947.5
Wrexham	23.0	11,320.0	6,667.0	255.0	18,265.0	21.0	18,286.0
Powys	0.0	10,048.5	8,490.0	291.5	18,830.0	465.0	19,295.0
Ceredigion	0.0	4,914.5	4,629.0	0.0	9,543.5	8.0	9,551.5
Pembrokeshire	0.0	9,814.5	7,872.0	126.5	17,813.0	196.0	18,009.0
Carmarthenshire	73.0	14,843.5	11,946.0	118.0	26,980.5	738.0	27,718.5
Swansea	0.0	19,138.0	14,030.0	160.0	33,328.0	411.5	33,739.5
Neath Port Talbot	0.0	11,151.0	8,370.0	187.0	19,708.0	0.0	19,708.0
Bridgend	60.5	12,198.0	9,587.0	395.5	22,241.0	426.0	22,667.0
The Vale of Glamorgan	120.5	10,965.5	9,680.0	260.0	21,026.0	209.0	21,235.0
Rhondda Cynon Taf	107.0	21,463.5	17,078.0	470.0	39,118.5	0.0	39,118.5
Merthyr Tydfil	163.5	5,082.0	3,786.0	139.0	9,170.5	0.0	9,170.5
Caerphilly	0.0	15,501.0	12,070.0	123.0	27,694.0	131.0	27,825.0
Blaenau Gwent	0.0	5,636.0	3,994.0	98.0	9,728.0	0.0	9,728.0
Torfaen	77.5	7,586.5	7,518.0	89.0	15,271.0	0.0	15,271.0
Monmouthshire	0.0	6,372.0	5,092.0	47.0	11,511.0	1,487.0	12,998.0
Newport	138.0	12,454.0	10,542.0	117.0	23,251.0	620.5	23,871.5
Cardiff	181.5	27,587.5	20,419.0	501.0	48,689.0	2,405.0	51,094.0
Wales	965.5	248,587.5	198,015.0	4,222.0	451,790.0	8,828.5	460,618.5
Wales – January 2011	987.0	246,195.5	201,230.0	4,156.5	452,569.0	8,989.5	461,558.5
Wales – January 2010	1,033.5	245,155.0	203,907.0	4,092.5	454,188.0	9,082.5	463,270.5
Wales – January 2009	1,138.0	246,323.5	205,421.0	4,087.0	456,969.5	9,176.5	466,146.0
Wales – January 2008	1,121.0	249,762.0	206,936.0	4,008.5	461,827.5	9,408.0	471,235.5

(a) St Brigids School has pupils of both primary and secondary level who are included in the appropriate columns.

Teachers and support staff

Here are the key points about teachers and support staff:

- The **number of teachers** in each local authority ranged between 3,005 in Cardiff, to 502 in Merthyr Tydfil. ([Table 7](#))
- The number of **full-time equivalent qualified teachers in schools** was highest in Cardiff at 2,687.2 teachers and lowest in Merthyr Tydfil at 478.4 teachers. ([Table 8](#))
- Ceredigion had the lowest primary **pupil teacher ratio** at 17.1, and Torfaen had the highest at 23.5. The lowest secondary pupil teacher ratio was also in Ceredigion at 14.9, and the highest was in Merthyr Tydfil at 18.2. ([Table 9](#))
- The **pupil teacher ratio** is highest in primary schools at 20.7 and lowest in special schools at 6.6. ([Table 9](#))
- The number of **full-time equivalent support staff in schools** was highest in Cardiff at 2,338.2 support staff, and lowest in Merthyr Tydfil at 416.1 support staff. ([Table 10](#))
- The introduction of the Foundation Phase and the Teacher Workload Agreement are the two main drivers behind the increase in support staff. ([Table 10](#))

Table 7: Number of qualified teachers, by local authority, January 2012

	Maintained schools					Independent	All schools
	Nursery	Primary	Secondary	Special	Total		
Isle of Anglesey	0	283	260	14	557	10	567
Gwynedd	0	520	505	28	1,053	54	1,107
Conwy	0	472	464	23	959	151	1,110
Denbighshire (a)	0	441	466	39	946	63	1,009
Flintshire	2	681	655	37	1,375	10	1,385
Wrexham	4	636	452	28	1,120	13	1,133
Powys	0	637	571	47	1,255	94	1,349
Ceredigion	0	335	338	0	673	4	677
Pembrokeshire	0	566	486	21	1,073	28	1,101
Carmarthenshire	4	886	781	22	1,693	114	1,807
Swansea	0	998	838	33	1,869	66	1,935
Neath Port Talbot	0	599	539	36	1,174	0	1,174
Bridgend	5	583	616	55	1,259	65	1,324
The Vale of Glamorgan	10	620	599	54	1,283	55	1,338
Rhondda Cynon Taf	9	1,002	1,069	59	2,139	0	2,139
Merthyr Tydfil	10	262	214	16	502	0	502
Caerphilly	0	754	745	21	1,520	14	1,534
Blaenau Gwent	0	305	257	15	577	0	577
Torfaen	5	344	454	12	815	0	815
Monmouthshire	0	345	326	11	682	214	896
Newport	6	649	664	21	1,340	64	1,404
Cardiff	18	1,533	1,352	102	3,005	265	3,270
Wales	73	13,451	12,651	694	26,869	1,284	28,153
Wales – January 2011	72	13,399	12,935	702	27,108	1,309	28,417
Wales – January 2010	78	13,582	13,102	673	27,435	1,297	28,732
Wales – January 2009	82	13,726	13,219	675	27,702	1,267	28,969
Wales – January 2008	79	13,916	13,212	675	27,882	1,302	29,184

(a) St Brigid's School has teachers of both primary and secondary level who are included in the appropriate columns.

Table 8: Full-time equivalent qualified teachers, by local authority, January 2012

FTE

	Maintained schools					Total	Independent	All schools
	Nursery	Primary	Secondary	Special				
Isle of Anglesey	0.0	251.9	243.8	13.0		508.7	8.7	517.4
Gwynedd	0.0	465.8	471.2	28.0		965.0	46.4	1,011.3
Conwy	0.0	414.1	436.3	22.3		872.8	136.6	1,009.3
Denbighshire (a)	0.0	388.1	427.4	36.6		852.1	62.8	914.9
Flintshire	1.0	605.0	608.6	34.4		1,249.0	9.7	1,258.7
Wrexham	3.4	559.0	419.1	27.5		1,009.1	11.7	1,020.8
Powys	0.0	531.0	534.4	42.6		1,108.0	73.6	1,181.5
Ceredigion	0.0	287.5	310.0	0.0		597.5	4.0	601.5
Pembrokeshire	0.0	488.6	454.7	18.8		962.0	23.9	985.9
Carmarthenshire	4.0	784.0	728.8	22.0		1,538.8	89.8	1,628.6
Swansea	0.0	889.9	787.5	29.7		1,707.1	49.2	1,756.3
Neath Port Talbot	0.0	536.9	513.8	31.4		1,082.1	0.0	1,082.1
Bridgend	4.0	543.2	581.6	51.8		1,180.6	53.5	1,234.1
The Vale of Glamorgan	8.3	556.8	573.2	48.3		1,186.6	43.3	1,230.0
Rhondda Cynon Taf	8.1	944.5	1,009.6	55.8		2,018.0	0.0	2,018.0
Merthyr Tydfil	10.0	244.2	208.2	16.0		478.4	0.0	478.4
Caerphilly	0.0	699.7	693.2	18.8		1,411.7	10.0	1,421.7
Blaenau Gwent	0.0	284.3	252.2	15.0		551.5	0.0	551.5
Torfaen	5.0	323.4	430.7	11.2		770.3	0.0	770.3
Monmouthshire	0.0	302.7	305.5	10.8		619.0	194.3	813.3
Newport	5.2	590.2	631.4	18.8		1,245.6	58.8	1,304.4
Cardiff	14.6	1,335.6	1,247.2	89.8		2,687.2	219.9	2,907.1
Wales	63.6	12,026.2	11,868.3	642.6		24,600.7	1,096.2	25,696.9
Wales – January 2011	62.7	11,998.7	12,144.7	648.2		24,854.4	1,117.3	25,971.7
Wales – January 2010	68.6	12,206.6	12,379.0	632.3		25,286.6	1,109.5	26,396.0
Wales – January 2009	73.9	12,342.5	12,515.0	630.6		25,562.0	1,097.2	26,659.2
Wales – January 2008	73.0	12,528.8	12,523.8	637.1		25,762.7	1,117.8	26,880.5

(a) St Brigids School has teachers of both primary and secondary level who are included in the appropriate columns.

Table 9: Pupil teacher ratios within schools, by local authority, January 2012

	Maintained schools					Independent	All schools
	Nursery	Primary	Secondary	Special	Total		
Isle of Anglesey	.	20.3	16.8	4.8	18.2	6.9	18.0
Gwynedd	.	19.6	15.8	4.9	17.3	8.0	16.9
Conwy	.	19.6	16.7	7.4	17.8	6.2	16.2
Denbighshire (a)	.	19.8	17.0	6.8	17.8	6.6	17.1
Flintshire	21.3	20.6	16.8	6.7	18.4	2.5	18.2
Wrexham	6.8	20.2	15.9	9.3	18.1	1.8	17.9
Powys	.	18.9	15.9	6.9	17.0	6.3	16.3
Ceredigion	.	17.1	14.9	.	16.0	2.0	15.9
Pembrokeshire	.	20.1	17.3	6.7	18.5	8.2	18.3
Carmarthenshire	18.3	18.9	16.4	5.4	17.5	8.2	17.0
Swansea	.	21.5	17.8	5.4	19.5	8.4	19.2
Neath Port Talbot	.	20.8	16.3	6.0	18.2	.	18.2
Bridgend	15.1	22.5	16.5	7.6	18.8	8.0	18.4
The Vale of Glamorgan	14.5	19.7	16.9	5.4	17.7	4.8	17.3
Rhondda Cynon Taf	13.2	22.7	16.9	8.4	19.4	.	19.4
Merthyr Tydfil	16.4	20.8	18.2	8.7	19.2	.	19.2
Caerphilly	.	22.2	17.4	6.5	19.6	13.1	19.6
Blaenau Gwent	.	19.8	15.8	6.5	17.6	.	17.6
Torfaen	15.5	23.5	17.5	7.9	19.8	.	19.8
Monmouthshire	.	21.1	16.7	4.4	18.6	7.7	16.0
Newport	26.4	21.1	16.7	6.2	18.7	10.6	18.3
Cardiff	12.4	20.7	16.4	5.6	18.1	10.9	17.6
Wales	15.2	20.7	16.7	6.6	18.4	8.1	17.9
Wales – January 2011	15.7	20.5	16.6	6.4	18.2	8.0	17.8
Wales – January 2010	15.1	20.1	16.5	6.5	18.0	8.2	17.6
Wales – January 2009	15.4	20.0	16.4	6.5	17.9	8.4	17.5
Wales – January 2008	15.4	19.9	16.5	6.3	17.9	8.4	17.5

(a) St Brigids School has pupils and teachers of both primary and secondary level who are included in the appropriate columns.

Table 10: Full-time equivalent support staff, by local authority, January 2012

	Maintained schools					Total
	Nursery	Primary	Secondary	Special	Total	
Isle of Anglesey	0.0	283.3	199.2	19.8	502.4	
Gwynedd	0.0	439.3	219.5	49.8	708.6	
Conwy	0.0	344.9	209.4	69.8	624.0	
Denbighshire (a)	0.0	462.6	261.1	83.9	807.5	
Flintshire	2.3	708.8	287.9	84.7	1,083.7	
Wrexham	6.3	713.5	249.3	105.2	1,074.3	
Powys	0.0	527.6	273.1	116.8	917.6	
Ceredigion	0.0	335.6	266.6	0.0	602.2	
Pembrokeshire	0.0	727.4	345.4	78.2	1,151.0	
Carmarthenshire	7.1	894.8	563.2	57.0	1,522.1	
Swansea	0.0	1,082.7	546.5	89.2	1,718.4	
Neath Port Talbot	0.0	580.8	219.6	77.1	877.4	
Bridgend	6.8	686.9	240.0	167.5	1,101.2	
The Vale of Glamorgan	15.1	529.5	288.6	150.2	983.4	
Rhondda Cynon Taf	13.4	1,080.2	500.4	133.6	1,727.5	
Merthyr Tydfil	13.9	272.5	81.0	48.6	416.1	
Caerphilly	0.0	776.2	342.6	83.3	1,202.1	
Blaenau Gwent	0.0	314.5	123.1	52.5	490.1	
Torfaen	8.9	412.2	224.6	39.5	685.1	
Monmouthshire	0.0	405.4	179.7	26.8	611.9	
Newport	23.5	676.0	391.5	58.6	1,149.6	
Cardiff	26.2	1,449.2	701.7	161.2	2,338.2	
Wales	123.4	13,703.7	6,714.0	1,753.4	22,294.5	
Wales – January 2011	125.1	12,850.2	6,653.2	1,692.0	21,320.5	
Wales – January 2010	119.6	12,263.7	6,525.8	1,500.6	20,409.7	
Wales – January 2009	120.6	11,198.5	6,234.4	1,540.2	19,093.8	
Wales – January 2008	103.4	9,466.1	5,893.5	1,482.6	16,945.6	

(a) St Brigids School has support staff of both primary and secondary level who are included in the appropriate columns.

Free school meals (FSM)

Here are the key points about free school meals:

- The **number of pupils eligible for free meals** has decreased from 84,806 pupils in January 2011 to 82,543 pupils in January 2012.
- Since 2008, the **percentage of compulsory aged school pupils known to be eligible for free meals** has increased year on year. This increase may be related to that seen in the number of claimants of Jobseeker's Allowance in Wales, which is one of the criteria for eligibility for free meals (more information can be seen in the Key Quality Information at the back of this release).
- The percentage of pupils known to be eligible for free meals was highest in special schools at 41.0 per cent. ([Table 11](#))

Table 11: School meal arrangements in nursery and primary schools, secondary and special schools (a)

	Nursery schools		Primary Schools		Secondary Schools		Special Schools	
	Number of pupils known to be eligible for free meals	Percentage of pupils known to be eligible for free meals	Number of pupils known to be eligible for free meals	Percentage of pupils known to be eligible for free meals	Number of pupils known to be eligible for free meals	Percentage of pupils known to be eligible for free meals	Number of pupils known to be eligible for free meals	Percentage of pupils known to be eligible for free meals
All pupils:								
2008	155	8.7	42,281	16.2	29,408	14.2	1,588	39.3
2009	170	9.5	44,083	17.1	30,426	14.8	1,543	37.5
2010	159	9.5	47,212	18.3	31,737	15.6	1,641	39.9
2011	143	9.1	50,560	19.5	32,314	16.1	1,789	42.8
2012	133	8.7	49,391	18.8	31,276	15.8	1,743	41.0
Pupils aged 5-15:								
2008	.	.	35,481	17.9	27,820	15.6	1,303	41.1
2009	.	.	36,525	18.8	28,713	16.3	1,257	39.5
2010	.	.	38,665	20.1	29,805	17.1	1,321	42.0
2011	.	.	40,422	21.1	30,247	17.7	1,404	44.9
2012	.	.	39,656	20.6	29,252	17.4	1,357	42.8

(a) At January each year.

Ethnicity

Here are the key points about ethnicity:

- Of the **total number of pupils aged 5 or over** at primary, secondary and special schools in Wales, over 9 in 10 pupils were classed as White British.
- The **percentage of pupils** whose ethnic background was classified as minority ethnic origin was slightly higher in primary schools than in secondary or special schools.
- Of the **pupils whose ethnic background was classified as Black**, 80.1 per cent of them were classified as Black African.
- Of the **pupils whose ethnic background was classified as Asian**, 20.5 per cent of them were classified as Indian, 33.0 per cent as Pakistani, and 35.3 per cent as Bangladeshi. ([Table 12](#))

Table 12: Number of pupils aged 5 or over, by ethnic background, January 2012

Ethnic background	Primary		Secondary		Special		Total	
	Number	Per cent (a)	Number	Per cent (a)	Number	Per cent (a)	Number	Per cent (a)
White	177,967	92.5	185,473	93.7	3,736	92.5	367,176	93.1
White British	173,787	90.3	182,154	92.0	3,688	91.3	359,629	91.2
Traveller of Irish Heritage	230	0.1	86	0.0	7	0.2	323	0.1
Gypsy/ Roma	331	0.2	160	0.1	5	0.1	496	0.1
Any other White Background	3,619	1.9	3,073	1.6	36	0.9	6,728	1.7
Mixed	4,541	2.4	3,793	1.9	86	2.1	8,420	2.1
White and Black Caribbean	1,040	0.5	988	0.5	18	0.4	2,046	0.5
White and Black African	562	0.3	410	0.2	7	0.2	979	0.2
White and Asian	1,080	0.6	862	0.4	16	0.4	1,958	0.5
Any other mixed background	1,859	1.0	1,533	0.8	45	1.1	3,437	0.9
Asian	4,420	2.3	3,472	1.8	79	2.0	7,971	2.0
Indian	988	0.5	638	0.3	8	0.2	1,634	0.4
Pakistani	1,436	0.7	1,158	0.6	36	0.9	2,630	0.7
Bangladeshi	1,524	0.8	1,263	0.6	29	0.7	2,816	0.7
Any other Asian background	472	0.2	413	0.2	6	0.1	891	0.2
Black	1,465	0.8	1,272	0.6	41	1.0	2,778	0.7
Black Caribbean	97	0.1	111	0.1	0	0.0	208	0.1
Black African	1,188	0.6	1,000	0.5	37	0.9	2,225	0.6
Any other Black background	180	0.1	161	0.1	4	0.1	345	0.1
Chinese	296	0.2	357	0.2	6	0.1	659	0.2
Any other ethnic group	2,133	1.1	1,703	0.9	27	0.7	3,863	1.0
Total with valid category	190,822	99.2	196,070	99.0	3,975	98.4	390,867	99.1
Unknown or not stated	1,556	0.8	1,945	1.0	66	1.6	3,567	0.9
All pupils	192,378	100.0	198,015	100.0	4,041	100.0	394,434	100.0

(a) Of all pupils aged 5 or over.

Special educational needs (SEN)

Here are the key points about special educational needs:

- 15.1 per cent of **pupils at independent schools** have some form of special educational need; a third of these pupils with SEN have statements of SEN. Of the pupils with statements of special educational needs, 36.4 per cent had behavioural, emotional and social difficulties as their major need, 22.2 per cent of pupils had autistic spectrum disorders and 15.7 per cent of pupils had physical and medical difficulties as their major need. ([Table 13](#))
- 22.1 per cent of **all pupils at primary, secondary and special schools** in Wales have some form of special educational need; 12.7 per cent of the pupils with special educational needs have statements of SEN. ([Table 14](#))
- 21.7 per cent of **pupils at primary schools** have some form of special educational need; 7.0 per cent of these pupils with SEN have statements of SEN. Of the pupils with special educational needs, the most common major need was moderate learning difficulties, representing 34.0 per cent of pupils with some form of SEN. ([Table 14](#))
- 21.1 per cent of **pupils at secondary schools** have some form of special educational need; 12.2 per cent of these pupils with SEN have statements of SEN. Of the pupils with special educational needs, the most common major need was moderate learning difficulties, representing just over a third of all pupils with some form of SEN. ([Table 14](#))
- All **pupils at special schools** have some form of special educational need; 94.6 per cent of these pupils with SEN have statements of SEN. Of the pupils with special educational needs, the most common major need was severe learning difficulties, representing almost a third of all pupils with some form of SEN. ([Table 14](#))

Table 13: Pupils with special educational needs in independent schools, by major need, January 2012

	Independent schools	
	Number	Incidence % (a)
Pupils with a statement of special educational need:		
Moderate learning difficulties	11	0.1
General learning difficulties	4	-
Severe learning difficulties	13	0.1
Profound & multiple learning difficulties	3	-
Dyslexia	23	0.3
Dyscalculia	0	0.0
Dyspraxia	0	0.0
Attention Deficit Hyperactivity Disorder	14	0.2
Autistic Spectrum Disorders	76	0.9
Physical and medical difficulties	54	0.6
Hearing impairment	1	-
Visual impairment	1	-
Multiple sensory impairment	0	0.0
Speech, language & communication difficulties	18	0.2
Behavioural, emotional and social difficulties	125	1.4
Total	343	3.8
Pupils with special educational needs but no statement	1,009	11.3
Total pupils on roll in independent schools (headcount)	8,929	100.0

(a) Incidence of pupils - the number of pupils expressed as a proportion of the total number of pupils on roll in Independent schools.

Table 14: Pupils with a statement of special educational needs in maintained schools, by type of school and major need, January 2012

Major need	Primary			Secondary			Special			Total		
	Number	Incidence % (a)	Placement % (b)	Number	Incidence % (a)	Placement % (b)	Number	Incidence % (a)	Placement % (b)	Number	Incidence % (a)	Placement % (b)
Moderate learning difficulties	572	0.2	4.4	1,031	0.5	7.9	495	11.6	3.8	2,098	0.5	16.0
General learning difficulties	62	-	0.5	99	-	0.8	1	-	-	162	-	1.2
Severe learning difficulties	279	0.1	2.1	268	0.1	2.0	1,284	30.2	9.8	1,831	0.4	14.0
Profound & multiple learning difficulties	124	-	0.9	55	-	0.4	441	10.4	3.4	620	0.1	4.7
Dyslexia	54	-	0.4	437	0.2	3.3	3	0.1	-	494	0.1	3.8
Dyscalculia	0	0.0	0.0	6	-	-	0	0.0	0.0	6	-	-
Dyspraxia	5	-	-	30	-	0.2	3	0.1	-	38	-	0.3
Attention Deficit Hyperactivity Disorder	50	-	0.4	51	-	0.4	12	0.3	0.1	113	-	0.9
Autistic Spectrum Disorders	748	0.3	5.7	870	0.4	6.6	907	21.3	6.9	2,525	0.5	19.3
Physical and medical difficulties	542	0.2	4.1	443	0.2	3.4	190	4.5	1.5	1,175	0.3	9.0
Hearing impairment	173	0.1	1.3	156	0.1	1.2	14	0.3	0.1	343	0.1	2.6
Visual impairment	90	-	0.7	101	0.1	0.8	11	0.3	0.1	202	-	1.5
Multiple sensory impairment	10	-	0.1	8	-	0.1	11	0.3	0.1	29	-	0.2
Speech, language & communication difficulties	912	0.3	7.0	843	0.4	6.4	178	4.2	1.4	1,933	0.4	14.8
Behavioural, emotional and social difficulties	355	0.1	2.7	686	0.3	5.2	473	11.1	3.6	1,514	0.3	11.6
Total	3,976	1.5	30.4	5,084	2.6	38.9	4,023	94.6	30.7	13,083	2.8	100.0

(a) Incidence of pupils - the number of pupils expressed as a proportion of the total number of pupils on roll within EACH school type.

(b) Placement of pupils - the number of pupils expressed as a proportion of the total number of pupils within each SEN grouping in Primary, Secondary and Special schools combined.
e.g. Number of pupils with a statement of SEN of moderate learning difficulties divided by the total number of pupils with a statement of SEN in Primary+Secondary+Special schools.

Table 15: Pupils with a special educational need but no statement, in maintained schools, by type of school and major need, January 2012

Major need	Primary			Secondary			Special			Total		
	Number	Incidence % (a)	Placement % (b)	Number	Incidence % (a)	Placement % (b)	Number	Incidence % (a)	Placement % (b)	Number	Incidence % (a)	Placement % (b)
Moderate learning difficulties	18,780	7.2	20.9	13,184	6.7	14.7	32	0.8	-	31,996	6.9	35.6
General learning difficulties	11,013	4.2	12.3	5,687	2.9	6.3	3	0.1	-	16,703	3.6	18.6
Severe learning difficulties	429	0.2	0.5	136	0.1	0.2	59	1.4	0.1	624	0.1	0.7
Profound & multiple learning difficulties	77	-	0.1	10	-	-	22	0.5	-	109	-	0.1
Dyslexia	2,851	1.1	3.2	5,959	3.0	6.6	0	0.0	0.0	8,810	1.9	9.8
Dyscalculia	135	0.1	0.2	279	0.1	0.3	0	0.0	0.0	414	0.1	0.5
Dyspraxia	182	0.1	0.2	277	0.1	0.3	0	0.0	0.0	459	0.1	0.5
Attention Deficit Hyperactivity Disorder	359	0.1	0.4	329	0.2	0.4	0	0.0	0.0	688	0.1	0.8
Autistic Spectrum Disorders	720	0.3	0.8	664	0.3	0.7	48	1.1	0.1	1,432	0.3	1.6
Physical and medical difficulties	1,711	0.7	1.9	1,346	0.7	1.5	5	0.1	-	3,062	0.7	3.4
Hearing impairment	918	0.4	1.0	665	0.3	0.7	0	0.0	0.0	1,583	0.3	1.8
Visual impairment	349	0.1	0.4	267	0.1	0.3	0	0.0	0.0	616	0.1	0.7
Multiple sensory impairment	9	-	-	24	-	-	2	-	-	35	-	-
Speech, language & communication difficulties	9,514	3.6	10.6	1,679	0.8	1.9	8	0.2	-	11,201	2.4	12.5
Behavioural, emotional and social difficulties	5,735	2.2	6.4	6,240	3.2	7.0	52	1.2	0.1	12,027	2.6	13.4
Total	52,782	20.1	58.8	36,746	18.6	40.9	231	5.4	0.3	89,759	19.3	100.0

(a) Incidence of pupils - the number of pupils expressed as a proportion of the total number of pupils on roll within EACH school type.

(b) Placement of pupils - the number of pupils expressed as a proportion of the total number of pupils within each SEN grouping in Primary, Secondary and Special schools combined.
e.g. Number of pupils with a statement of SEN of moderate learning difficulties divided by the total number of pupils with a statement of SEN in Primary+Secondary+Special schools.

Table 16: All pupils with special educational needs in maintained schools, by type of school and major need, January 2012

Major need	Primary			Secondary			Special			Total		
	Number	Incidence % (a)	Placement % (b)	Number	Incidence % (a)	Placement % (b)	Number	Incidence % (a)	Placement % (b)	Number	Incidence % (a)	Placement % (b)
Moderate learning difficulties	19,352	7.4	18.8	14,215	7.2	13.8	527	12.4	0.5	34,094	7.3	33.2
General learning difficulties	11,075	4.2	10.8	5,786	2.9	5.6	4	0.1	-	16,865	3.6	16.4
Severe learning difficulties	708	0.3	0.7	404	0.2	0.4	1,343	31.6	1.3	2,455	0.5	2.4
Profound & multiple learning difficulties	201	0.1	0.2	65	-	0.1	463	10.9	0.5	729	0.2	0.7
Dyslexia	2,905	1.1	2.8	6,396	3.2	6.2	3	0.1	-	9,304	2.0	9.0
Dyscalculia	135	0.1	0.1	285	0.1	0.3	0	0.0	0.0	420	0.1	0.4
Dyspraxia	187	0.1	0.2	307	0.2	0.3	3	0.1	-	497	0.1	0.5
Attention Deficit Hyperactivity Disorder	409	0.2	0.4	380	0.2	0.4	12	0.3	-	801	0.2	0.8
Autistic Spectrum Disorders	1,468	0.6	1.4	1,534	0.8	1.5	955	22.4	0.9	3,957	0.8	3.8
Physical and medical difficulties	2,253	0.9	2.2	1,789	0.9	1.7	195	4.6	0.2	4,237	0.9	4.1
Hearing impairment	1,091	0.4	1.1	821	0.4	0.8	14	0.3	-	1,926	0.4	1.9
Visual impairment	439	0.2	0.4	368	0.2	0.4	11	0.3	-	818	0.2	0.8
Multiple sensory impairment	19	-	-	32	-	-	13	0.3	-	64	-	0.1
Speech, language & communication difficulties	10,426	4.0	10.1	2,522	1.3	2.5	186	4.4	0.2	13,134	2.8	12.8
Behavioural, emotional and social difficulties	6,090	2.3	5.9	6,926	3.5	6.7	525	12.3	0.5	13,541	2.9	13.2
Total	56,758	21.7	55.2	41,830	21.1	40.7	4,254	100.0	4.1	102,842	22.1	100.0
Total number of pupils on roll	262,144			198,015			4,254			465,943		

(a) Incidence of pupils - the number of pupils expressed as a proportion of the total number of pupils on roll within EACH school type.

(b) Placement of pupils - the number of pupils expressed as a proportion of the total number of pupils within each SEN grouping in Primary, Secondary and Special schools combined.
e.g. Number of pupils with a statement of SEN of moderate learning difficulties divided by the total number of pupils with a statement of SEN in Primary+Secondary+Special schools.

Key Quality Information

Coverage

The data in this release relates to all maintained and independent schools in Wales. Figures for local authorities do not include independent schools.

Status

Schools' data are derived from the Pupil Level Annual School Census (PLASC) returns and STATS 1 returns supplied by schools open on Census day in January each year. The returns are authorised by headteachers and validated by Local Authorities.

Timeliness

The data in this release relate to the position on Tuesday 17 January 2012.

Source of data

Pupil Level Annual School Census (PLASC) / School Census (STATS1 Return)

PLASC is an electronic collection of pupil and school level data provided by all maintained sector primary, secondary, nursery and special schools in January each year. Schools record data on pupils and the school throughout the year in their Management Information System (MIS) software. This data is collated into an electronic PLASC return and submitted to the Welsh Government through DEWi, a secure online data transfer system developed by the Welsh Government. Various stages of automated validation and sense-checking are built into the process to ensure a high quality of data to inform policy making and funding.

From January 1994 independent schools in Wales complete a STATS1 return which replaced Form 101A (school census return for independent schools prior to January 1994).

Definitions

Full-time equivalent (FTE):

- FTE pupil numbers count part-time pupils as 0.5.
- FTE of part-time teachers expresses the teachers' service in hours as a proportion of a school week: 32.5 hours for maintained schools and 26 hours for independent schools.

Pupil Teacher Ratio (PTR): calculated by dividing the FTE number of pupils by the FTE number of qualified teachers (headteachers, deputy heads and other qualified teachers).

Free School Meals: Pupils are eligible for free school meals if their families receive Income Support or Income Based Jobseeker's Allowance or Support under Part VI of the Immigration and Asylum Act 1999 or the guarantee element of State Pension Credit. They are also eligible if their parents are in receipt of Income Related Employment and Support Allowance (IR). Employment and Support Allowance is an integrated contributory and income related allowance and replaced, for new claimants, Incapacity and Income Support, where it is paid on the grounds of incapacity and sickness. Children who receive Income Support or Income Based Jobseeker's Allowance in their own right are also eligible to receive free school meals. Children whose families are in receipt of Child Tax Credit, providing they are not entitled to Working Tax Credit, and have an annual income, as assessed by HM Revenue & Customs that does not exceed £16,190 are also eligible for free school meals.

Special educational needs: for further information please see these [guidance notes](#).

Ethnic background: please see these [guidance notes](#) for further information on categories and data collection methods.

Rounding: In tables where figures have been rounded to the nearest final digit there may be an apparent discrepancy between the sum of the constituent items and the total as shown.

Symbols: The following symbols have been used throughout the publication:

- .. not available
- . not applicable
- the data item is not exactly zero but less than 0.05

Comparability: Other countries' releases

Attached is the latest available release for England, published on 22 June 2012:

[Schools, Pupils and their Characteristics, January 2012](#)

Scotland publishes some data on pupils as part of a larger publication on schools. Their latest release was published on 1 December 2010 (revised on 13 June 2012):

[Summary Statistics for Schools in Scotland, No.1 2010 Edition](#)

Scotland also publishes some data on school meals as part of a different publication. Their latest release was published on 27 June 2012:

[Summary statistics for attainment, leaver destinations and school meals, No. 1: 2012 Edition](#)

The latest available release for Northern Ireland, published on 23 February 2012, can be found here:

[Enrolments at schools and in funded pre-school education in Northern Ireland 2011/12](#)

Related data for Wales

This release shows final data at Wales level for 2008 - 2012.

The previous final data released were for 2011, in the form of a Statistical First Release:

[Schools Census, 2011: Final Results](#), published on 6 September 2011.

The Welsh Government also releases teacher data **from a different source** (the STATS 3 return) in the form of a Statistical First Release:

[Teachers in service, vacancies and sickness absence: January 2012](#), published on 16 June 2012.

Since the above release is from a different source, figures may not match, and therefore caution should be taken when making comparisons.

Who are the key users of this data?

These statistics are used both within and outside the Welsh Government. Some of the key users are:

- Ministers and the Members Research Service in the National Assembly for Wales;
- The Department for Education and Skills in the Welsh Government;
- Other areas of the Welsh Government;
- The research community;
- Students, academics and universities;
- Individual citizens and private companies.

What are the data used for?

These statistics are used in a variety of ways. Some examples of these are:

- resource allocation in the Welsh Local Government Finance Settlement and the Better Schools Fund;
- advice to Ministers;
- the all-Wales education core data packs (the replacement for the National Pupil Database);
- local authority and school comparisons and benchmarks;
- to inform the education policy decision-making process in Wales including school reorganisation;
- to inform ESTYN during school inspections;
- the education domain of the Welsh Index of Multiple Deprivation;
- as a basis for School Banding;
- to assist in research in educational attainment.

Comments on the coverage or presentation of this release are welcomed. Contact details are on the front page.