

## Morphological plant modeling: Unleashing geometric and topologic potential within the plant sciences

Alexander Bucksch, Acheampong Atta-Boateng, Akomian Fortune Azihou, Mathilde Balduzzi, Dorjsuren Battogtokh, Aly Baumgartner, Brad Binder, Siobhan Braybrook, Cynthia Chang, Viktoriya Coneva, et al.

► **To cite this version:**

Alexander Bucksch, Acheampong Atta-Boateng, Akomian Fortune Azihou, Mathilde Balduzzi, Dorjsuren Battogtokh, et al.. Morphological plant modeling: Unleashing geometric and topologic potential within the plant sciences. 2016. hal-01412691

**HAL Id: hal-01412691**

**<https://hal.inria.fr/hal-01412691>**

Preprint submitted on 8 Dec 2016

**HAL** is a multi-disciplinary open access archive for the deposit and dissemination of scientific research documents, whether they are published or not. The documents may come from teaching and research institutions in France or abroad, or from public or private research centers.

L'archive ouverte pluridisciplinaire **HAL**, est destinée au dépôt et à la diffusion de documents scientifiques de niveau recherche, publiés ou non, émanant des établissements d'enseignement et de recherche français ou étrangers, des laboratoires publics ou privés.



1 **Morphological plant modeling:**  
2 **Unleashing geometric and topologic potential**  
3 **within the plant sciences**  
4

5 Alexander Bucksch<sup>1,2,3,§</sup>, Acheampong Atta-Boateng<sup>4</sup>, Akomian Fortuné Azihou<sup>5</sup>, Mathilde  
6 Balduzzi<sup>6</sup>, Dorjsuren Battogtokh<sup>7</sup>, Aly Baumgartner<sup>8</sup>, Brad M. Binder<sup>9</sup>, Siobhan A.  
7 Braybrook<sup>10</sup>, Cynthia Chang<sup>11</sup>, Viktoirya Coneva<sup>12</sup>, Thomas J. DeWitt<sup>13</sup>, Alexander G.  
8 Fletcher<sup>14</sup>, Malia A. Gehan<sup>12</sup>, Diego Hernan Diaz-Martinez<sup>15</sup>, Lilan Hong<sup>16</sup>, Anjali S. Iyer-  
9 Pascuzzi<sup>17</sup>, Laura L. Klein<sup>18</sup>, Samuel Leiboff<sup>19</sup>, Mao Li<sup>15</sup>, Jonathan P. Lynch<sup>20</sup>, Alexis Maizel<sup>21</sup>,  
10 Julin N. Maloof<sup>22</sup>, R.J. Cody Markelz<sup>22</sup>, Ciera C. Martinez<sup>23</sup>, Laura A. Miller<sup>24</sup>, Washington  
11 Mio<sup>15</sup>, Wojtek Palubicki<sup>10</sup>, Hendrik Poorter<sup>25</sup>, Christophe Pradal<sup>26</sup>, Charles A. Price<sup>27</sup>, Eetu  
12 Puttonen<sup>28</sup>, John Reese<sup>29</sup>, Rubén Rellán-Álvarez<sup>30</sup>, Edgar P. Spalding<sup>31</sup>, Erin E. Sparks<sup>32</sup>,  
13 Christopher N. Topp<sup>12</sup>, Joseph Williams<sup>29</sup>, Daniel H. Chitwood<sup>12,§</sup>  
14

15 <sup>1</sup>Department of Plant Biology, University of Georgia, Athens, GA USA

16 <sup>2</sup>Warnell School of Forestry and Natural Resources, University of Georgia, Athens, GA USA

17 <sup>3</sup>Institute of Bioinformatics, University of Georgia, Athens, GA USA

18 <sup>4</sup>School of Forestry and Environmental Studies, Yale University, New Haven, CT USA

19 <sup>5</sup>Laboratory of Applied Ecology, Faculty of Agronomic Sciences, University of Abomey-  
20 Calavi, 01 BP 526 Cotonou, Benin

21 <sup>6</sup>VirtualPlants, Inria, Montpellier, France

22 <sup>7</sup>Department of Biological Sciences, Virginia Polytechnic Institute and State University,  
23 Blacksburg, VA USA

24 <sup>8</sup>Department of Geosciences, Baylor University, Waco, TX USA

25 <sup>9</sup>Department of Biochemistry & Cellular and Molecular Biology, University of Tennessee,  
26 Knoxville, TN USA

27 <sup>10</sup>The Sainsbury Laboratory, University of Cambridge, Cambridge, UK

28 <sup>11</sup>Division of Biology, University of Washington, Bothell, WA USA

29 <sup>12</sup>Donald Danforth Plant Science Center, St. Louis, MO USA

30 <sup>13</sup>Department of Wildlife & Fisheries Sciences and Department of Plant Pathology &  
31 Microbiology, Texas A&M University, College Station, TX USA

32 <sup>14</sup>School of Mathematics & Statistics and Bateson Centre, University of Sheffield, Sheffield,  
33 UK

34 <sup>15</sup>Department of Mathematics, Florida State University, Tallahassee, FL USA

35 <sup>16</sup>Weill Institute for Cell and Molecular Biology and Section of Plant Biology, School of  
36 Integrative Plant Sciences, Cornell University, Ithaca, NY USA

37 <sup>17</sup>Department of Botany and Plant Pathology, Purdue University, West Lafayette, IN USA

- 38 <sup>18</sup>Department of Biology, Saint Louis University, St. Louis, MO USA  
39 <sup>19</sup>School of Integrative Plant Science, Cornell University, Ithaca, NY USA  
40 <sup>20</sup>Department of Plant Science, The Pennsylvania State University, University Park, PA USA  
41 <sup>21</sup>Center for Organismal Studies, Heidelberg University, Heidelberg, Germany  
42 <sup>22</sup>Department of Plant Biology, University of California, Davis, CA USA  
43 <sup>23</sup>Department of Molecular and Cell Biology, University of California, Berkeley, CA USA  
44 <sup>24</sup>Program in Bioinformatics and Computational Biology, The University of North Carolina,  
45 Chapel Hill, NC USA  
46 <sup>25</sup>Forschungszentrum Jülich, Jülich, Germany  
47 <sup>26</sup>CIRAD, UMR AGAP and Inria, VirtualPlants, Montpellier, France  
48 <sup>27</sup>National Institute for Mathematical and Biological Synthesis, University of Tennessee,  
49 Knoxville, TN USA  
50 <sup>28</sup>Finnish Geospatial Research Institute and Centre of Excellence in Laser Scanning  
51 Research, National Land Survey of Finland, Masala, Finland  
52 <sup>29</sup>Department of Ecology & Evolutionary Biology, University of Tennessee, Knoxville, TN  
53 USA  
54 <sup>30</sup>Unidad de Genómica Avanzada, Laboratorio Nacional de Genómica para la Biodiversidad,  
55 CINVESTAV, Irapuato, México  
56 <sup>31</sup>Department of Botany, University of Wisconsin, Madison, WI USA  
57 <sup>32</sup>Department of Biology, Duke University, Durham, NC USA

58  
59 **Keywords:** Plant biology, plant science, morphology, mathematics, topology, modeling

60 **Running title:** Plant morphological modeling

61

62 <sup>§</sup>To whom correspondence should be addressed:

63

64 Daniel H. Chitwood

65 Donald Danforth Plant Science Center

66 [dchitwood@danforthcenter.org](mailto:dchitwood@danforthcenter.org)

67

68 Alexander Bucksch

69 University of Georgia

70 [bucksch@uga.edu](mailto:bucksch@uga.edu)

71 **Abstract**

72

73 Plant morphology is inherently mathematical. The geometries of leaves and flowers and  
74 intricate topologies of the root have fascinated plant biologists and mathematicians alike.  
75 Beyond providing aesthetic inspiration, understanding plant morphology has become  
76 pressing in an era of climate change and a growing population. Gaining an understanding of  
77 how to modify plant architecture through molecular biology and breeding is critical to  
78 improving agriculture, and the monitoring of ecosystems and global vegetation is vital to  
79 modeling a future with fewer natural resources. In this white paper, we begin by  
80 summarizing the rich history and state of the art in quantifying the form of plants,  
81 mathematical models of patterning in plants, and how plant morphology manifests  
82 dynamically across disparate scales of biological organization. We then explore the  
83 fundamental challenges that remain unanswered concerning plant morphology, from the  
84 barriers preventing the prediction of phenotype from genotype to modeling the fluttering  
85 of leaves in a light breeze. We end with a discussion concerning the education of plant  
86 morphology synthesizing biological and mathematical approaches and ways to facilitate  
87 research advances through outreach, cross-disciplinary training, and open science. Never  
88 has the need to model plant morphology been more imperative. Unleashing the potential of  
89 geometric and topological approaches in the plant sciences promises to transform our  
90 understanding of both plants and mathematics.

91

92 **I. Introduction**

93

94 *A. Plant morphology from the perspective of plant biology*

95

96 The basic morphology of most land plants—sessile, tubular and photosynthetic, with a  
97 growing tip from which lateral organs originate and with finely-branched subterranean  
98 organs that both anchor the plant and allow uptake of nutrients—has also evolved in other  
99 multicellular eukaryotes. A broad definition of “plant” might include all eukaryotes capable  
100 of photosynthesis (Niklas, 1997), which within green and red algae traces directly to the



101 single primary endosymbiosis event that resulted in the incorporation of a cyanobacterial  
102 ancestor of the chloroplast into an ancient eukaryotic cell some one billion years ago.  
103 Among the green plants (Viridiplantae), branching shoot-like architectures with leaf-like  
104 appendages that are centers of photosynthesis have evolved in both land plants  
105 (Embryophyta) and aquatic green algae (Charophyta and Chlorophyta) (Kaplan and  
106 Hagemann, 1991). Algal holdfasts and vascular plant roots both anchor plants, but the  
107 vascular plant root extends the plant body much deeper into the soil where it also functions  
108 in nutrient uptake.

109

110 The study of plant morphology interfaces with all levels of biological organization (**Figure**  
111 **1A**). Plant morphology can be descriptive and typological, as in systematics, focusing on  
112 biological homologies to discern groups of organisms (Mayr, 1981; Wiens, 2000). These  
113 studies additionally have important applications in agriculture and horticulture, beginning  
114 with careful selection of ideal phenotypes. In plant ecology, the morphology of  
115 communities, comprised of numerous individuals, defines vegetation types and biomes,  
116 including their relationship to the environment. Plant morphology also informs plant  
117 physiology, the study of the functions of plants, whereas plant genetics describes the  
118 inheritance and, in modern times, the molecular basis of plant morphology (Kaplan, 2001).

119

120 Plant morphology is more, though, than an attribute affecting all levels of plant  
121 organization; it is also dynamic. Developmentally, morphology reveals itself over the  
122 lifetime of a plant through varying rates of cell division, cell expansion, and anisotropic  
123 growth (Esau, 1960; Steeves and Sussex, 1989; Niklas, 1994) (**Figure 1B**). Responses to  
124 changes in environmental conditions further modulate the abovementioned parameters.  
125 Development is genetically programmed and driven by biochemical processes that are  
126 responsible for physical forces that change the observed patterning and growth of organs  
127 (Green, 1999; Peaucelle et al., 2011; Braybrook and Jönsson, 2016). Physical forces  
128 continue to inform plant development, such as the growth of a root through heterogeneous  
129 soil densities or the bending of branches and leaves to flows of air or water, long after the  
130 initiation and patterning of young primordia (Niklas, 1992; Silk and Erickson, 1979; Vogel,

131 1984). Plant morphology evolves through inherited modifications of structure or  
132 development, either incrementally or abruptly, over the generations (Niklas, 1997) (**Figure**  
133 **1C**). A record of these changes over geologic time is preserved and correlates with the  
134 paleoclimate, illuminating our understanding of the form and function of extant plants  
135 today (Bailey and Sinnott, 1915). Development and evolution are the biological  
136 mechanisms through which plant morphology arises, regardless of whether in a systematic,  
137 ecological, physiological, or genetic context (**Figure 1**).

138

### 139 *B. Plant morphology from the perspective of mathematics*

140

141 In 1790, Johann Wolfgang von Goethe pioneered a perspective that transformed the way  
142 we think about plant morphology: the idea that the essence of plant morphology is an  
143 underlying process of deformation, and that seemingly differently shaped leaves and floral  
144 organs within a single plant are homologously related (Goethe, 1790; Friedman and Diggle,  
145 2011). The modern challenge that Goethe's paradigm presents is to quantitatively describe  
146 deformations in phenotype by their underlying genetic, developmental, and environmental  
147 causes. Thus, the fundamental challenge from a mathematical standpoint is how to define  
148 shape descriptors to compare plant morphology in the context of a single deformation  
149 process; or, how to remove all deformations from the shape that are not relevant to the  
150 biological question of interest (Mio and Srivastava, 2004; Lie et al., 2010). A plethora of  
151 mathematical approaches, utilizing techniques ranging from geometry and topology to  
152 graph theory, exist to describe plant morphology and analyze it with statistical methods.

153

154 An important class of shape descriptors detail plant morphology from the perspective of  
155 topology (**Figure 2A**). Topological analyses can compare shape characteristics  
156 independently of events that deform and transform plant shape geometrically, providing a  
157 framework by which plant morphology can be modeled. Algorithms that reduce the  
158 branching architecture of plants to a set of intersecting lines or curve segments,  
159 constituting a mathematical graph, are an intuitive representation of the plant form. Each  
160 curve segment is denoted by an edge, and a vertex denotes a connection. Augmenting each

161 vertex with a 3D coordinate results in a skeletal 3D representation of plant architecture  
162 derivable from imaging data (Bucksch et al., 2010; Bucksch, 2014a; Aiteanu and Klein,  
163 2014). Such skeletal descriptions are used to derive quantitative measurements of lengths,  
164 diameters, and angles (Bucksch and Fleck, 2011; Raunonen et al., 2013; Seidel et al., 2015).  
165 Having an architectural description in place allows the definition of orders, either  
166 biologically or in a more abstract sense. The relationships between orders, such as degree  
167 of self-similarity (Prusinkiewicz, 2004) or nestedness (Godin and Ferraro, 2010) are used  
168 to quantitatively summarize patterns of plant morphology.

169

170 Computer simulations use principles from graph theory, such as graph rewriting, to define  
171 rules successively augmenting a graph with vertices and edges as plant development  
172 unfolds. These rules recapitulate the differences observed in plant architectures across  
173 plant species (Kurth, 1994; Prusinkiewicz et al., 2001). Morse theory (Milnor, 1963)  
174 provides a rich toolset with which to model the morphology of plants. Roughly speaking, a  
175 Morse function expands over the plant surface where the “intersection” or contour  
176 between the Morse function and plant surface is evaluated during the expansion process.  
177 Events such as merging, splitting, appearance, or disappearance of contours provide  
178 avenues to quantify relationships between orders. Persistent homology (**Figure 2B-C**)  
179 extends Morse theory with functions that deform a given plant shape gradually to define  
180 self-similarity (MacPherson and Schweinhardt, 2012) and morphological properties  
181 (Edelsbrunner and Harer, 2010) on the basis of event statistics.

182

183 In the 1980s, David Kendall defined an elegant alternative statistical framework to the  
184 previously introduced topological descriptors that are capable of comparing outlines of  
185 shapes independently of scale, rotation, and translation (Kendall, 1984). His idea to  
186 compare the outline of shapes in a transformation-invariant fashion infused rapidly into  
187 biology (Bookstein, 1997). Furthermore, Kendall’s idea inspired the development of  
188 methods such as elliptical Fourier descriptors (Kuhl and Giardina, 1982) and new trends  
189 employing the Laplace Beltrami operator (Reuter et al., 2009), both relying on the spectral  
190 decompositions of shapes (Chitwood et al., 2012a; Chitwood et al., 2012b; Laga et al. 2014).

191 From a mathematical point of view, developmental processes construct surfaces in a three-  
192 dimensional space. Yet, this space in which development is embedded imposes constraints  
193 on plant forms observed. Awareness of these constraints has led to new interpretations of  
194 plant morphology (Prusinkiewicz and DeReuille, 2010; Bucksch et al., 2014b) and might  
195 explain, at least in part, observations such as symmetry or asymmetry in leaf shape  
196 (Martinez et al., 2016).

197  
198 Parallel to strictly mathematical descriptions of plant morphology, Ronald Fisher  
199 developed a statistical framework to partition variance into different sources of variability,  
200 whether genetic, developmental, or environmental (Fisher, 1925). Specifically, with respect  
201 to plant morphology, the iris flower dataset (Fisher, 1936) was used to develop novel  
202 methods to differentiate three *Iris* species based on the length and width of sepals and  
203 petals. The dataset is still used to this day as a benchmark to compare statistical methods<sup>1</sup>.

204  
205 In this white paper, we begin by summarizing the history and importance of the  
206 inextricable link between mathematical approaches with advances in our understanding of  
207 plant morphology. We proceed by outlining emerging questions at the interface of  
208 mathematics and plant morphology, focusing on the acquisition of data, modeling, and  
209 data-driven questions at all levels of plant organization. We conclude by describing  
210 milestones that will signal the further infusion of mathematics into the plant sciences,  
211 including integrated curriculums, outreach, and open science.

## 212 213 **II. A primer of the history, importance, and potential of mathematics in plant biology**

214  
215 Perhaps because of their intricate topologies, geometries, and iterative growth, the  
216 morphology of plants has inspired mathematicians; conversely, the biologist's conception  
217 of the plant shape requires a mathematical basis. Below we briefly summarize the rich  
218 history and state of the art in quantifying the plant form, mathematical models of

---

<sup>1</sup> The Iris flower dataset, [https://en.wikipedia.org/wiki/Iris\\_flower\\_data\\_set](https://en.wikipedia.org/wiki/Iris_flower_data_set) (retrieved September 24, 2016)

219 patterning in plants, and how plant morphology manifests dynamically across disparate  
220 scales of biological organization and over time.

221

## 222 *A. Quantifying plant morphology*

223

224 *1. Capturing the dynamics of plant morphology across time.* Techniques to temporally  
225 monitor plant development in 3D have been developed that are minimally invasive,  
226 allowing the tracking of cell and whole organ morphology, and even plant behavior, over  
227 timescales from seconds to days. Confocal microscopy, which eliminates out-of-focus light  
228 using a pinhole, can be used to create optical sections of objects and reconstruct 3D models  
229 (**Figure 3A**). Variations on confocal technology, such as Spinning Disk Confocal Microscopy  
230 (SDCM; Oreopolous et al., 2013) and Light-Sheet Fluorescence Microscopy (LSFM; Maizel et  
231 al., 2011; Sena et al., 2011; von Wangenheim et al., 2016), that minimize photo damage of  
232 live samples, can be used to understand plant organogenesis using time-lapse imaging.

233

234 For example, by comparing cell proliferation rates of complex and simple leaf primordia  
235 over time, the patterning of complex leaves in *Cardamine hirsuta* was demonstrated to  
236 result from inhibition of growth at the boundary between leaflets (Vlad et al., 2014).  
237 Similarly, early morphogenesis of lateral root primordia in *Arabidopsis* (**Figure 3A**) can be  
238 temporally modeled by patterns of successive cell divisions (Maizel et al., 2011; von  
239 Wangenheim et al. 2016). Cell lineage tracing during leaf organogenesis in *Arabidopsis*  
240 allowed for the spatial mapping of variation in growth rate. The formulation of leaf growth  
241 as a mathematical model incorporates local variations as a function of ontogenetic time  
242 (Kuchen et al., 2012; Tauriello et al., 2015). Such studies demonstrate the power of  
243 temporally tracking the origins of plant morphology down to the cellular level, revealing  
244 the full, spatio-temporal morphology of plants. As we will discuss later, other technologies  
245 can measure the consequences of plant development at grander, emergent scales.  
246 Computerized tomography (CT) (**Figure 3B**) and Magnetic Resonance Imaging (MRI) can  
247 be used to monitor the growth and morphology of mature organs, while radar, LIDAR, and  
248 satellite imaging can monitor ecosystems and global vegetation (**Figures 3-4**).

249

250 *2. Morphometrics and allometry: the measurement of shape and size.* Once morphological  
251 data has been collected, cells, young organ primordia, individual leaves, and roots—and by  
252 extension canopies, root systems, and populations—can be described using morphometric  
253 approaches. Shape features can be measured by hand, but increasingly machine vision  
254 (Wilf et al., 2016) and other automated approaches are used to place landmarks or derive  
255 elliptical Fourier descriptors from digital images of plant organs, allowing for statistical  
256 and spectral decompositions of shapes, respectively (Iwata et al., 1998; Langlade et al.,  
257 2005; Chitwood et al., 2012c; 2013; 2014a; 2014b; 2014c; Rellán-Alvarez et al., 2015).  
258 Underlying the shapes of plant organs are differential rates of cell expansion. Cellular  
259 expansion rates vary locally and can change rapidly deforming primordia into diverse  
260 mature organ morphologies (Rolland-Lagan et al., 2003; Remmler and Rolland-Lagan,  
261 2012; Das Gupta and Nath, 2015). Allometry, or the relationship between shape and size, is  
262 a principal consideration when analyzing the factors linking the growth of an organ to its  
263 resultant morphology. Just as allometry scales from the cellular to tissue and organ levels,  
264 it scales from the individual to population levels, explaining intricate morphologies on a  
265 global scale (Duncanson et al., 2015; Huang et al., 2016; Paul et al., 2015).

266

267 *B. Modeling pattern formation in plants*

268

269 *1. Turing, phyllotaxy, and reaction-diffusion modeling.* The beautiful patterns apparent in the  
270 regular arrangement of leaves on stems and their connection to mathematics have inspired  
271 scientists to create models explaining these phenomena. Alan Turing, a pioneering figure in  
272 twentieth-century science, developed a longstanding interest in phyllotaxy, the  
273 arrangement of leaves on a plant. Turing's approach to the problem was twofold: first, a  
274 detailed geometrical analysis of the patterns (Turing, 1992); and second, an application of  
275 his theory of morphogenesis through local activation and long-range inhibition (Turing,  
276 1952). Combining physical experiments with computer simulations, Douady and Couder  
277 (1996) subsequently modeled a diffusible chemical produced by developing primordia that  
278 would inhibit the initiation of nearby primordia, successfully recapitulating known

279 phyllotactic patterns. Such reaction-diffusion systems, which model *de novo* pattern  
280 formation as a process resulting from the spatial diffusion and interaction of substances  
281 over space and time, can be applied to a wide variety of processes governing plant pattern  
282 formation, including stem cell homeostasis and patterning of the shoot apical meristem  
283 (Bernasconi, 1994; Meinhardt, 2004; Hohm et al., 2010; Fujita et al., 2011), floral organ  
284 number (Kitazawa and Fujimoto, 2015), the regular spacing of root hairs (Meinhardt and  
285 Gierer, 1974), and vascular patterning (Meinhardt, 1976). Studies on pattern formation in  
286 plants, which originally inspired Turing and other reaction-diffusion modelers, have  
287 contributed to universal theories of pattern formation throughout life (Gierer and  
288 Meinhardt, 1972; Pearson, 1993).

289

290 *2. Auxin transport-feedback models of patterning.* The plant hormone auxin has been  
291 determined (at least in part) to empirically contribute to many of the abovementioned  
292 patterning events. Auxin distribution in plants is achieved through complex, transport-  
293 feedback mechanisms. In order to understand how a single hormone could produce such  
294 diverse patterns in a self-organizing manner, these feedback mechanisms have been  
295 extensively modeled with dynamic system techniques (a complete review of auxin  
296 transport mechanisms and their role in plant pattern formation is outside the scope of this  
297 manuscript, but see Smith and Bayer, 2009). Auxin transport creates discrete patterning  
298 events that are inconsistent with the gradients through which morphogens in animals  
299 typically act, demonstrating that pattern formation in plants and animals is fundamentally  
300 different (Bhalerao and Bennett, 2003). Elegant work combining modeling with  
301 experimental verification has demonstrated the role of auxin in diverse plant patterning  
302 processes including embryonic patterning (Moller and Weijers, 2009), patterning of the  
303 female gametophyte (Pagnussat et al., 2009), vascular patterning (Scarpella et al., 2006;  
304 Donner et al., 2009), the patterning of serrations and leaflets in complex leaves (Koenig et  
305 al., 2009), lateral root formation (Casimiro et al., 2001), and phyllotaxy (Reinhardt et al.,  
306 2003; Smith et al., 2006), among other processes too numerous to list here.

307

308 *3. Geometric models of cell division orientation.* Plant morphology is determined largely at  
309 the organismal level, rather than an emergent property resulting from the collective  
310 behavior of cells as in animals (Kaplan and Hagemann, 1991). Yet, as multicellular  
311 organisms, cell division and expansion are inextricably linked to plant development (Alim  
312 et al., 2012). Several attempts have been made to formulate universal rules predicting the  
313 position of cell divisions. In the nineteenth century, Sachs proposed that plant cells divide  
314 into two equally sized daughter cells with a division plane at right angles to the pre-existing  
315 walls (Sachs, 1878). Leo Errera drew analogies between plant cells and soap bubbles and  
316 posited that cells minimize their surface area. The predicted division plane among those  
317 cells that respect Sachs' rules is thus the shortest possible (Errera, 1886). Yet, this rule fails  
318 to fully account for observed patterns in cell division planes. Bessons and Dumais proposed  
319 that the probability for a given plane of division is inversely proportional to the exponential  
320 of its length (Besson and Dumais, 2011). Recently, for the *Arabidopsis* embryo, these  
321 observations were extended into 3D (Yoshida et al., 2014), in which symmetric divisions  
322 occur along a plane predicted by the Bessons-Dumais rule, but asymmetric divisions do not.  
323 Inhibition of auxin response causes all cells to divide according to the "shortest wall" rule,  
324 suggesting that auxin allows cells to deviate from the default rule.

325  
326 *4. Tensor-based modeling of growth.* The pattern of cell walls in a root or shoot meristem  
327 follows observable regularities. Two families of orthogonal lines can describe the patterns  
328 observed in cell walls: periclinal (divisions parallel to a local axis) and anticlinal (divisions  
329 normal to a local axis) (Sachs, 1878). Attempts to understand the origin of this regularity  
330 led to the development of tensor-based models for growth and cell divisions. These models  
331 share the underlying assumption of three mutually orthogonal principal directions of  
332 growth (PDG) at each point of a growing meristem and the assumption that cells divide in  
333 relation to PDGs (Hejnowicz and Romberger, 1984). Several tensor-based growth models  
334 have been developed for the shoot apical meristem, the primary root meristem (Hejnowicz  
335 and Karczewski, 1993; Nakielski, 2008), and the lateral root (Szymanowska-Pułka and



336 Nakielski, 2010; Szymanowska-Pulka et al., 2012). Such models provide a histogenetic link  
337 between theories explaining cell division patterns with the morphogenesis of plant organs.

338

339 *5. Quantifying branching structures.* Maybe because of their prominent appearance in  
340 everyday life, branching structures are one of the first geometrical forms recognized in  
341 plants. Their representation is intuitive because they can easily be reduced to intersecting  
342 line segments. A plethora of approaches to reduce imaged branching structures in 2D and  
343 3D to lines or skeletons exist (see Bucksch 2011 and Bucksch, 2014a for an overview). In  
344 principle, skeletons let us navigate through a branching structure and take measurements  
345 of branch length and diameter. In tree crowns (Bucksch and Fleck 2011; Schilling et al.;  
346 2012, Delagrangé et al. 2014), skeletons are a fundamental descriptor towards  
347 understanding self-shadowing in tree crowns and measuring biomass allocation over time.  
348 Skeletonization methods are also a popular method to quantify the branching architecture  
349 of roots, both statically at a single time point (Lobet et al., 2011; Galkovskiy et al., 2012)  
350 and dynamically capturing root growth (Symonova et al., 2015).

351

352 The beauty and complexity of branch architectures has inspired a rich history of efforts to  
353 quantitatively summarize them. One of the earliest efforts by Leonardo da Vinci described  
354 allometric laws in the branching of tree crowns. Da Vinci quantified the hierarchical  
355 relationships between diameters and length of branches (Long, 1994; Eloy, 2011), a  
356 phenomenon later similarly observed in tree roots (Oppelt et al., 2001). Biologists visually  
357 observed these underlying laws and created classes of tree architecture, noting, “trees in  
358 the forest rarely exist in the ideal state ...” (Halle et al., 1978). Quantitatively revealing the  
359 “ideal state” of tree architecture has consumed researchers for over four decades. Early  
360 fractal approaches to capture the repetitive and modular appearance of branching  
361 structures are described in Henry Horn’s pioneering book *The Adaptive Geometry of Trees*  
362 (Horn, 1971), which inspired researchers for decades (Borchert and Slade, 1981; Zeide and  
363 Pfeifer, 1991, Valladares, 1999; Godin and Ferraro, 2010). In turn, this view of a genetic  
364 mechanism driving the developmental program of tree architecture has been realized  
365 computationally (Palubicki, 2013), simulating the development of tree architectures

366 (Runions et al., 2007; Palubicki et al., 2009). Equivalently, functional-structural root models  
367 simulate the efficiency of nutrient and water uptake following the development of roots  
368 (Nielsen et al., 1994; Dunabin et al., 2013).

369

370 *C. Dynamic interactions of morphology between biological scales, with the environment, and*  
371 *over time*

372

373 *1. Kinematics.* Although we have already discussed time-dynamic models of plant  
374 morphogenesis and cellular division patterns above, the emergent morphologies that arise  
375 from cells, tissues, and organs interact with the surrounding environment in functional  
376 ways. For example, in roots there are three developmental zones starting at the tip that  
377 propel cells through the soil medium: 1) the meristematic zone, where cells are actively  
378 proliferating; 2) the elongation zone, where cells stop dividing and begin to expand; and 3)  
379 the differentiation zone, where cells acquire their terminal cell fate (Barnes, 1898). Root  
380 growth is controlled by both displacement via production of new cells (meristematic zone)  
381 and expansion of existing cells (elongation zone). Describing a growth system with both  
382 expanding and contracting components is a challenge. One approach to solve this problem,  
383 pioneered by Wendy Silk (Silk and Erickson, 1979; Silk, 1984), is to adopt the formalism of  
384 compressible fluid dynamics to describe plant growth in terms of kinematics. This  
385 approach treats the plant “fluid” as a continuous medium, neglecting molecular-scale  
386 heterogeneity. Considering the root as a homogenous fluid (which is theoretically  
387 supported, if land plants are considered to be giant, single-celled organisms; Kaplan and  
388 Hagemann, 1991; Coneva and Chitwood, 2015), this approach can be applied to questions  
389 such as the relationship between water potentials and roots growth (Sharp et al., 1988;  
390 1990) and the allometric growth of leaves (Bernstein et al., 1993; 1995).

391

392 *2. Plant-wind interactions.* While conceptualizing the root as a homogenous fluid can be a  
393 useful simplification, the reality is that plants—the terrestrial Embryophyta and aquatic  
394 Charophyta and Chlorophyta—live within currents of air and water. Work from Steven  
395 Vogel and Laura Miller views the architecture of plants from the perspective of their fluid

396 dynamic properties (Vogel, 1970; 1989; 1992; 2009; Miller et al., 2012). Plants that live in  
397 mechanically extreme environments, such as those with frequent hurricanes, strong winds,  
398 and tornados, appear to be better adapted to resist wind forces. Plant architecture is  
399 modified at all levels to reduce the drag that acts on a plant and avoid resonant forcing in  
400 addition to structural reinforcements of the trunk and roots. Even at low wind speeds,  
401 exchange through leaf and petiole designs that augment passive movements in the wind,  
402 such as leaf flutter, may be physiologically relevant (Schuepp, 1972; Grace, 1978; Roden  
403 and Pearcy, 1993; Roden, 2003). Regardless of whether a plant lives in environments with  
404 frequent winds, the morphology of plants must reckon with other fluid dynamic effects,  
405 such as the boundary layer (Schuepp, 1993). The effects of leaf size on the boundary layer  
406 are well-known, influencing transpiration losses, the diffusion of photosynthetic gases, and  
407 heat dissipation (Parkhurst and Loucks, 1972). In addition to shape and size, plant  
408 morphology at finer scales, including epidermal features such as trichomes and wax  
409 deposition, may influence the boundary layer and therefore plant fitness. Later, we detail  
410 models of plant-fluid interactions in depth.

411  
412 *3. Leafshape and the paleorecord.* Plant morphology responds dynamically to turbulent  
413 environments and can plastically respond, developmentally, to subtler changes. But what is  
414 the relationship between plant morphology and geologic time? Ultimately, the shape of  
415 leaves is subject to selection pressures from a variety of sources, whether the influence of  
416 high winds, herbivory, thermoregulation, or light interception. Plant morphology may be  
417 constrained by hydraulic, biomechanical, developmental, or phylogenetic effects (Nicotra et  
418 al., 2011). Any one of these factors—and other unknowns—can create patterns observed in  
419 both extant and fossil leaf assemblages (Chitwood and Sinha, 2016).

420  
421 Larger leaves, with fewer and less pronounced serrations, predominate in warmer, wetter  
422 climates whereas smaller leaves, with larger and more numerous serrations, tend to be  
423 found in colder, drier temperate environments (Bailey and Sinnott, 1915). This  
424 fundamental relationship between leaf dissection with temperature and precipitation has  
425 been demonstrated across geographies and in different phylogenetic groups, although

426 often the correlation differs or is more or less robust depending on context (Wolfe, 1979;  
427 1993; Wing and Greenwood, 1993; Wilf, 1997; Wilf et al., 1998; Huff et al., 2003; Jacobs and  
428 Herendeen, 2004; Royer et al., 2005; Spicer et al., 2009; Peppe et al., 2011). Plasticity in leaf  
429 shape during the lifetime of an individual plant correlates with temperature and  
430 precipitation similarly to the fossil record, demonstrating parallels in the morphological  
431 response of plants to changes in environmental conditions over developmental and  
432 evolutionary timescales (Royer et al., 2009; Chitwood et al., 2016). Measuring plant  
433 morphology in evolving populations provides insights into adaptive versus neutral features  
434 (Moyle, 2008; Nordborg and Weigel, 2008; Brachi et al., 2011), revealing insights into the  
435 relationship between morphology and function (Wright et al., 2004).

436

### 437 **III. Emerging questions and barriers in the mathematical analysis of plant** 438 **morphology**

439

440 A true synthesis of plant morphology, comprehensively modeling observed biological  
441 phenomena and incorporating a mathematical perspective, remains out of reach. In this  
442 section we highlight the challenges facing the study of plant morphology, including the  
443 limits of acquiring morphological data, phenotype prediction, responses of plants to the  
444 environment, integrating models across biological scales, and the modeling of complex  
445 phenomena that remain elusive, such as the reconfiguration of plant architecture to gale  
446 force winds.

447

#### 448 *A. Technological limits acquiring plant morphological data*

449

450 Before the invention of digital photography in 1969 (Smith, 2010), the measurement of  
451 plant architecture was a manual process performed directly on the plant or using  
452 traditional photographs (Atkins, 1843; 1853). Describing morphology at smaller  
453 anatomical or cellular scales involved qualitative descriptions, sketches, and the use of  
454 camera lucida to faithfully record the perceptions of the researcher (von Nägeli, 1863).  
455 Digital imaging devices enabled the shape of plants to be captured on all biological scales in

456 2D and 3D. The most accessible scale is plant architecture. In general, technology to record  
457 plant architecture produces two kinds of data: surface samples and volumetric data.  
458 Stereovision data are generated from different views of 2D digital images (Boyde, 1973;  
459 Dumais and Kwiatkowska, 2002). Through matching of identical features, a spatial  
460 alignment of the images is computed that allows the calculation of depth information.  
461  
462 Time of flight scanners, such as terrestrial laser scanning, overcome unit-less measurement  
463 by recording the round-trip time of hundreds of thousands of laser beams sent at different  
464 angles from the scanner to the first plant surface within the line of sight (Vosselman and  
465 Maas, 2010) (**Figure 4**). The constant speed of light allows the calculation of the distance  
466 between the point hit on the plant surface and the laser scanner. Both stereovision and  
467 laser scanning produce surface samples or point clouds as output. However, both face  
468 algorithmic challenges if plant parts occlude each other, as both rely on the reflection of  
469 waves from the plant surface (Bucksch, 2011).  
470  
471 Penetrating the plant surface to resolve occlusions is possible with X-ray and magnetic  
472 resonance imaging (MRI). While both technologies circumvent occlusions and can even  
473 penetrate soil, their limitation is the requirement of a closed imaging volume. X-ray  
474 systems rely on the principle that different tissues and materials absorb different amounts  
475 of X-ray radiation (Kumi et al., 2015.) (**Figure 3B**). A detector plate records the remaining  
476 X-ray radiation. If X-ray images are taken from various angles around the plant, then a 3D  
477 model can be reconstructed from the absorption levels. The field produced with two  
478 cylindrical magnets defines the imaging volume of an MRI (van Dusschoten et al., 2016).  
479 The hydrogen molecules of the plant align with the field of the first magnet. Creating a  
480 second magnetic field causes a detectable change in hydrogen alignment, from which the  
481 3D structure of a plant can be reconstructed. The resulting data are voxels that encode the  
482 local hydrogen density as an intensity value. Both surface-penetrating imaging technologies  
483 intrinsically limit the imaging volume, either by the need of a detector plate or the closed  
484 cylinder needed to establish a magnetic field. Thus, MRI and X-ray are destructive if applied

485 to mature plant organs such as roots in the field or tree crowns that are larger than the  
486 imaging volume (Fiorani et al., 2012).

487

488 Radar provides another non-invasive technique to study individual tree and forest  
489 structures over wide areas. Radar pulses can either penetrate or reflect from foliage,  
490 depending on the selected wavelength (Kaasalainen et al., 2015). Most radar applications  
491 occur in forestry and are being operated from satellites or airplanes, although more  
492 compact and agile systems are being developed for precision forestry above- and below-  
493 ground (Feng et al., 2016).

494

#### 495 *B. The genetic basis of plant morphology*

496

497 One of the outstanding challenges in plant biology is to link the inheritance and activity of  
498 genes with observed phenotypes. This is particularly challenging for the study of plant  
499 morphology, as both the genetic landscape and morphospaces are complex: modeling each  
500 of these phenomena alone is difficult, let alone trying to model morphology as a result of  
501 genetic phenomena (Benfey and Mitchell-Olds, 2008; Lynch and Brown, 2012; Chitwood  
502 and Topp, 2015). Although classic examples exist in which plant morphology is radically  
503 altered by the effects of a few genes (Doebley, 2004; Clark et al., 2006; Kimura et al., 2008),  
504 many morphological traits have a polygenic basis (Langlade et al., 2005; Tian et al., 2011;  
505 Chitwood et al., 2013; 2014b). Two approaches to link genotype to phenotype for complex  
506 traits are quantitative trait loci (QTL) analysis and genome wide association studies  
507 (GWAS). Both approaches identify statistical associations between genetic variants and  
508 phenotype, the former usually through a controlled cross and the latter often relying on  
509 historical recombination and linkage disequilibrium (Flint-Garcia et al., 2003; Meyer and  
510 Purugganan, 2013).

511

512 QTL analyses for plant morphology span scales from the cellular to the whole organ level.  
513 At the cellular level, root cortex cell number (Ron et al., 2013), the cellular basis of carpel  
514 size (Frary et al., 2000), and epidermal cell area and number (Tisne et al., 2008) have been

515 analyzed. The genetic basis of cellular architecture ultimately affects organ morphology,  
516 and quantitative genetic bases for fruit shape (Monforte, et al., 2014; Paran and van der  
517 Knaap, 2007), root architecture (Zhu et al., 2005; Clark et al., 2011; Topp et al., 2013; Zurek,  
518 et al., 2015) and leaf shape (Langlade et al., 2005; Ku et al., 2010; Tian et al., 2011;  
519 Chitwood et al., 2013; 2014a; 2014b; Zhang et al., 2014; Truong et al., 2015) have been  
520 described. Increasingly, studies are linking the effects of cell shape and organ morphology  
521 to pleiotropic effects on plant architecture. Thompson et al. (2015) link shoot apical  
522 meristem (SAM) shape to adult plant traits such as leaf shape, flowering time, and yield.  
523 Similarly, high-throughput image processing of the SAM in a diverse panel of maize inbreds  
524 has uncovered candidate genes involved in hormone transport, cell division, and cell size  
525 that correlate the morphology of the meristem with SNPs residing within candidate genes  
526 (Leiboff et al., 2015).

527  
528 Natural variation in cell, tissue, or organ morphology ultimately impacts plant physiology.  
529 For example, root cortical aerenchyma formation reduces the metabolic costs of soil  
530 exploration, thereby improving plant growth under conditions of suboptimal availability of  
531 water and nutrients (Zhu et al. 2010; Postma and Lynch, 2011; York et al., 2013; Lynch et  
532 al., 2014; Lynch, 2013; 2015, Chimungu et al. 2015). Maize genotypes with greater root  
533 cortical cell size or reduced root cortical cell file number also have reduced metabolic costs,  
534 and therefore deeper rooting and increased water capture under drought (Chimungu et al.,  
535 2014a; 2014b). The radial distribution of auxin in the rice root leads to differential cell  
536 expansion and more vertical root angles, resulting in greater water capture in drying soils.  
537 The genetic basis of this effect was mapped to *DRO1* (Uga et al., 2013), and exemplifies how  
538 the control of cellular organization by a single gene can have profound effects at the  
539 organismal level and the interaction of plants with their environments.

540  
541 High-throughput phenotyping techniques are increasingly used to reveal the genetic basis  
542 of natural variation. In doing so, phenotyping techniques complement classic approaches of  
543 reverse genetics and often lead to novel insights even in a well-studied species like  
544 *Arabidopsis*. Such techniques reveal a genetic basis for such dynamic traits as root growth

545 (Slovack et al., 2014) and by studying the genetic basis of cellular traits can reveal the  
546 developmental genetic basis of root architecture (Meijón et al., 2014). Similarly, high-  
547 resolution sampling of root gravitropism has led to an unprecedented understanding of the  
548 dynamics of the genetic basis of plasticity (Miller et al., 2007; Brooks et al., 2010; Spalding  
549 and Miller, 2013). Molecular technologies, such as next-generation sequencing, also  
550 provide a mean for the high-throughput determination of the genetic basis of molecular  
551 traits. eQTL analysis (gene expression QTL) reveals the genetic basis of tens of thousands of  
552 transcript abundance levels (Jansen and Nap, 2001; Druka et al., 2010). Such an approach  
553 demonstrates that single loci with profound pleiotropic effects on plant architecture, such  
554 as *ERECTA* in *Arabidopsis*, can influence the expression of numerous genes in the genome  
555 (Keurentjes et al., 2007). The genetic basis of gene expression can be linked to QTL  
556 affecting plant morphology (Majewski and Pastinen, 2011; Chitwood et al., 2013; 2014b;  
557 Anderson et al., 2014; Ranjan et al., 2016), providing yet another genetic link between  
558 emergent levels of organization.

559

### 560 *C. The environmental basis of plant morphology*

561

562 Phenotypic plasticity is defined as the ability of one genotype to produce different  
563 phenotypes based on environment (Bradshaw 1965; DeWitt and Scheiner, 2004) and adds  
564 to the phenotypic complexity created by genetics and development. This produces both  
565 challenges and opportunities for mathematical modeling. Trait variation in response to the  
566 environment has been defined classically using reaction norms (originally  
567 “Reaktionsnorm”) where the value of a certain trait is plotted against different  
568 environments (Woltereck, 1909). If the reaction norm line is flat, the trait is not plastic; if  
569 the reaction norm varies across the environment the trait is plastic and the slope of the  
570 reaction norm line will be a measure of the plasticity. Significant differences in slopes  
571 among genotypes indicate a GxE interaction (Via and Lande, 1985). If a certain trait in one  
572 genotype remains constant in contrasting environments, the trait is said to be canalized  
573 (Waddington, 1953).

574



575 Seminal work by Clausen, Keck, and Hiesey (1941) demonstrated using several clonal  
576 species in a series of reciprocal transplants that although heredity exerts the most  
577 measureable effects on plant morphology, environment is also a major source of  
578 phenotypic variance. Research continues to explore the range of phenotypic variation  
579 expressed by a given genotype (phenotypic plasticity + developmental noise) in the context  
580 of different environments, as this has important implications for many fields, such as  
581 conservation, evolution, and agriculture (Nicotra et al., 2010; DeWitt, 2016). Many studies  
582 examine phenotypes across latitudinal or altitudinal gradients, or other environmental  
583 clines, to characterize the range of variation possible and its relationship to the  
584 environment (Cordell et al. 1998; Díaz et al., 2016). Community effects are also essential to  
585 understanding the origins of plant morphology, and there has been increased interest in  
586 the role of biotic effects such as hybridization, pathogens, shading, and crowding (Nicotra  
587 et al., 2010; Holeski et al., 2012; Atlan et al., 2015), as well as abiotic contributors such as  
588 nutrient availability (Dorken and Barrett, 2004), to plasticity.

589

590 Many plastic responses by plants to the environment are conserved and have been studied  
591 in detail from the molecular to ecological levels. One such example is phototropism: plants  
592 can sense the direction of illumination and grow towards it (Briggs, 2014). Another  
593 example of shoot environmental plasticity is neighbor detection and shade avoidance  
594 (Casal, 2013; Schmitt et al., 2003). Light transmitted through or reflected from leaves has a  
595 unique spectral signature that plants use as a cue for incipient or ongoing photosynthetic  
596 competition. In response to neighbor shade, some plants make striking morphological  
597 changes to compete for light. Elongation of stems and petioles can increase two-fold or  
598 more. This increase in stem elongation comes at the expense of allocation to laminar  
599 outgrowth of leaves and fruit and seed set. Additionally, plants undergoing shade  
600 avoidance show increased apical dominance (reduced branching) as growth upwards is  
601 favored over growth outwards to reach light before competitors. Understanding the  
602 molecular basis of the shade avoidance response has implications for agriculture.  
603 Improvements are anticipated through manipulation of resource allocation in competition

604 scenarios of neighboring plants at high planting densities versus crop production standards  
605 (Carriedo et al., 2016).

606  
607 Below ground, plants encounter diverse sources of environmental variability, including  
608 water availability, soil chemistry, and physical properties like soil hardness and movement.  
609 These factors vary not only between individual plants (Razak et al., 2013), but within an  
610 individual root system, to which plants respond in diverse ways (Drew, 1975; Robbins and  
611 Dinneny, 2015). Plasticity at a micro-environmental scale has been linked to developmental  
612 and molecular mechanisms (Bao et al., 2014). The scientific challenge is here to integrate  
613 these effects at a whole root system level to understand the optimal acquisition in resource  
614 limited conditions (Rellan-Alvarez, et al., 2016) (**Figure 5**).

615  
616 *D. Integrating models from different levels of organization*

617  
618 Most of the mathematical models highlighted in the previous sections have been designed  
619 independently to study plant development at specific spatial and temporal scales. Since it is  
620 extremely difficult to examine complex interdependent processes occurring at multiple  
621 spatio-temporal scales, mathematical modeling can be used as a complementary tool with  
622 which to disentangle component processes and investigate how their coupling may lead to  
623 emergent patterns at a systems level (Hamant, 2008; Band and King, 2012; Jenzen and  
624 Fozard 2015; Band et al. 2012).

625  
626 A detailed multiscale model may involve hundreds of variables and parameters. It is likely  
627 that the exact values of most parameters will not be known, nor even identifiable. Thus, to  
628 be practical, a multiscale model should generate well-constrained predictions despite  
629 significant parameter uncertainty (Gutenkunst et al., 2007, Hofhuis et al., 2016). It is  
630 desirable that a multiscale model has certain modularity in its design such that individual  
631 modules are responsible for modeling specific spatial aspects of the system (Baldazzi et al.,  
632 2012). Global sensitivity analysis can be applied to reveal how individual modules function  
633 when other modules are perturbed (Sudret, 2008). Most importantly, a multiscale model

634 must be tested against available data. An important future problem in plant mathematical  
635 biology is how to integrate existing mathematical models that describe plant  
636 morphogenesis at different spatial scales (Hill et al., 2013).

637  
638 It is a useful exercise to illustrate the challenges of integrating models at the molecular and  
639 cellular levels with an example. At the molecular scale, mathematical models describe the  
640 spatiotemporal dynamics of key biomolecules and phytohormones controlling the function  
641 and fate of individual cells. Some of these biomolecules can be diffusive, but others, such as  
642 membrane-bound receptors, may be spatially localized (Battogtokh and Tyson, 2016). The  
643 distribution of molecules in the cell  $i$  ( $i=1..N$ ) can be described by a system of partial  
644 differential equations,  $\frac{dX_i}{dt} = f(X, \mu) + D_X \sum_{j=neighbors} (X_j - X_i)$ , where the components of  
645  $X$  are the levels of biomolecules in a given cell, the nonlinear functions  $f$  describe the  
646 kinetics of the reactions between the molecules,  $\mu$  is the set of model parameters,  $D_X$  is a  
647 diagonal matrix of diffusion coefficients,  $N$  is the number of the cells, and the sum in the last  
648 term is for the diffusion of the biomolecules between the cells (Fujita et al., 2011).

649  
650 At the cellular scale, mathematical models describe dynamics of cell networks where the  
651 mechanical pressures exerted on the cell walls are important factors for cell growth and  
652 division (Jensen and Fozard, 2015) (**Figure 6A**). In models describing plant development in  
653 a two-dimensional cross-section geometry, cells are often modeled as polygons defined by  
654 walls between neighboring cells. The spatial position of a vertex, where the cell walls of  
655 three neighboring cells coalesce, is a convenient variable for mathematical modeling of the  
656 dynamics of cellular networks (Prusinkiewicz and Lindenmayer, 2012). A given vertex is  
657 driven by the sum of forces acting on it, the turgor pressures from the neighboring cells,  
658 and the elastic forces exerted on the cell walls. Thus, the time evolution of the vertex  $j$   
659 located at the position  $x$  can be described by the dynamic equation:  $\frac{d^2x_j}{dt^2} = F_j$ , where  $F_j$  is  
660 the total force acting on the vertex  $j$ . By numerically integrating the dynamic equations for  
661 the positions of all the vertexes in the polygonal cells, the dynamics of the cell network can  
662 be simulated. Additionally, certain rules can be adopted for cell division (Besson and

663 Dumais, 2011), which may depend on the size of a cell (Fujita et al., 2011), on its location in  
664 the network (Prusinkiewicz et al., 2001), and on the local levels of hormones and  
665 biomolecules (Dello Ioio et al., 2008).

666

667 A multiscale model can be assembled by combining the models at molecular and cellular  
668 levels. Such a model allows the computation of spatiotemporal dynamics of biomolecules X  
669 for realistic initial and boundary conditions on the dynamic cellular networks. Mutations  
670 and deletions of the genes encoding the biomolecules can be modeled by changing the  
671 parameters, or by modifying the reaction terms in the function  $f$ . By inspecting the effects  
672 of such modifications on the dynamics of cellular networks, the relationship between  
673 genotypes and phenotypes can be predicted. In the aforementioned model by Fujita et al.  
674 (2011), the biomolecules X describe the dynamics of the proteins involved in the stem cell  
675 regulation of the SAM in *Arabidopsis*. It can simulate SAM development in wild type and  
676 mutant plants, demonstrating how integrative models can be valuable tools in predictive  
677 modeling of plant development (**Figure 6B**).

678

#### 679 *E. Modeling the interaction between plant morphology and fluid dynamics*

680

681 Modeling plant morphology is a complicated endeavor, but the forces that interact with  
682 plants, such as currents of wind and water, are sometimes even more complex and affect  
683 the development and evolution of plant architecture. Smaller scale airflows around plants  
684 can affect plant health as much as gale force winds, but are determined by plant  
685 morphology at an exquisite level of detail. For example, how does vegetation density affect  
686 average flow speeds within complex canopies and how do the dynamics of the airflow  
687 affect the movement of the trunks, stems, branches, and individual leaves? Simulating flow  
688 on scales that span the individual leaf to the entire canopy are not currently feasible but  
689 nonetheless critical for understanding plant morphology. Below, we highlight efforts to  
690 model the interaction of currents with plant morphology at two extreme scales—light  
691 breezes and gale force winds.

692

693 *1. The role of light breezes in cooling and gas exchange.* Leaf shape and material properties  
694 that alter the boundary layer of the fluid over the surface of the leaf or enhance passive  
695 movement can potentially augment gas and heat exchange. For example, it has been  
696 proposed that the broad leaves of some trees flutter for the purpose of convective and  
697 evaporative heat transfer (Thom, 1968; Grant, 1983). Fluttering may also allow more light  
698 to penetrate the canopy (Roden and Pearcy, 1993).

699

700 One way to quantify the relative importance of advective and diffusive transport rates is by  
701 using the Peclet number. The Peclet number is given as  $Pe = UL/D$ , where  $U$  is a velocity,  
702 such as wind speed,  $L$  is a length, such as the length of the leaf, and  $D$  is the diffusivity of the  
703 quantity of interest (heat,  $O_2$ ,  $CO_2$ , etc.). If  $Pe \ll 1$ , then the transport of the heat or  
704 chemical gradient is dominated by diffusion. If  $Pe \gg 1$ , then the movement of chemicals and  
705 the dissipation of heat is dominated by advection. Note that diffusive transport alone is a  
706 relatively slow process.

707

708 The morphology and movement of leaves change the boundary layer near the surface, and  
709 subsequently alter the relative importance of advective and diffusive transport represented  
710 by the Peclet number. Boundary layers describe the fluid layers close to surfaces in which  
711 the flow of air or water approaches zero. Note that for any viscous fluid, the velocity of air  
712 at a surface relative to the velocity of the surface itself is always zero. This is called the no-  
713 slip condition. Diffusive transport is typically dominant very close to surfaces, and  
714 advective transport dominates farther from surfaces.

715

716 The morphology and mechanical properties of leaves can alter the boundary layer. For  
717 example, trichomes, the hair-like protrusions on the surfaces of leaves, can effectively  
718 thicken the boundary layer around a leaf under some conditions (Benz and Martin, 2006).  
719 Denser or longer trichomes that increase the boundary layer may decrease rates of heat  
720 dissipation, evaporation, and gas exchange. Other configurations of trichomes may increase  
721 turbulence in the boundary layer and increase gas exchange and heat dissipation  
722 (Schreuder et al., 2001). Furthermore, any movement of the leaf relative to the movement

723 of the air or water may, in some cases, act to decrease the boundary layer and increase gas  
724 exchange, evaporation, and heat dissipation (Roden and Pearcy, 1993). Each of these  
725 parameters may be altered by the plant to improve the overall function of the leaf (Vogel,  
726 2012).

727

728 *2. Effect of extreme winds and currents on broad leaves.* Plants use flexibility as one strategy  
729 to reduce the drag acting upon them while simultaneously avoiding the violent oscillations  
730 observed in many bluff structures subjected to strong winds. Vogel (1989) was the first to  
731 provide quantitative data on drag reduction in plants. He found that single broad leaves  
732 reconfigure at high flow velocities into cone shapes that reduce flutter and drag when  
733 compared to paper cut-outs of similar shape and flexibility (**Figure 7A-B**). He later found  
734 that a similar phenomenon occurs in water for herbaceous plants and proposed that this  
735 mechanism increases survival rates in flash floods (Vogel, 2006). Subsequent experimental  
736 studies on broad leaves and flowers also support rapid repositioning in response to strong  
737 wind as a general mechanism to reduce drag (Niklas, 1992; Ennos, 1997; Etnier and Vogel,  
738 2000), and simple mathematical models of a flexible beam immersed in a two-dimensional  
739 flow exhibit similar behavior (Alben et al., 2002). At the larger scale, Vogel (1989) noticed  
740 that leaf clusters and leaflets tend to reconfigure into larger drag reducing structures and  
741 speculated that a similar phenomenon is also true for groups of branches (**Figure 7C**).

742

743 Passive reconfiguration of flexible structures in strong flows are prevalent throughout the  
744 natural world (Vogel, 1994). One key feature that is important to drag and flutter reduction  
745 is the shape of the reconfiguration. A wide range of broad leaves reconfigure into cone  
746 shapes as both single leaves and clusters (Vogel, 1989; 2006). The branches and fronds of  
747 flexible trees such as palms and willows appear to reconfigure into grouped conical shapes  
748 in strong winds and hurricanes. The daffodil *Narcissus spp.* (Etnier, 2000) and sessile  
749 marine organisms such as sea anemones (Koehl; 1977a; 1977b) reconfigure into cone  
750 shapes through deformations of the petals or tentacles, respectively. Previous work has  
751 shown that the cone shape is significantly more stable than other reconfigurations such as

752 U-shapes (Miller et al., 2012). The folding of the leaves and the interactions of surfaces are  
753 critical to determining the shape of the reconfiguration and its stability (**Figure 7**).

754

755 Of course there are likely other strategies that may be used in place of, or in addition to,  
756 conical reconfigurations. For example, Gosselin and de Langre (2011) showed how plants  
757 such as pines may act as a poroelastic structures to reduce drag. As mentioned in the  
758 previous section, there may also be situations in which flutter reduction is not desirable. In  
759 these cases, conical reconfiguration may not be present at wind speeds relevant to cooling  
760 and light transfer (0–4.5 m/s) when flutter could enhance these mechanisms.

761

762 Some plants also use active reconfiguration in flow. Plant responses to a mechanical  
763 stimulus, known as a thigmonastic movement, are thought to be regulated by electrical  
764 signal transduction. These electrical signals are action potentials that share many of the  
765 same properties as those that occur in animals (Bose, 1926; 1928; Volkov, 2000; 2006). In  
766 the case of the touch-me-not, *Mimosa pudica*, action potentials are generated as a result of  
767 various stimuli such as touch, heat, electrical voltage, or wind. The electrical signal is  
768 spread from the point of stimulus to the pinnae, petiole or stem (Bose, 1926; 1928) and will  
769 result in the folding of the pinnae and the collapse of the petiole or stem. The action  
770 potential generated from a weak stimulus will stop at the base of a single pinna so that the  
771 leaflets from neighboring pinna remain unfolded (Volkov et al., 2010). These movements  
772 are generated by motor organs called pulvini that consist of swollen joints.

773

774 Although it is now clear that flexible plants can reduce drag through reconfiguration, it is  
775 not at all obvious how leaves and leaf clusters minimize the effects of vortex induced  
776 oscillations. Previous work suggests that structural damping and stiffness nonlinearities  
777 (Niklas, 1992; Bruchert et al., 2003; Miller, 2005) may reduce these destructive oscillations,  
778 but this complex fluid-structure interaction problem remains relatively unexplored. The  
779 study of vortex induced oscillations is also a significant area of research in structural  
780 dynamics, and it seems likely that work in both fields may inform the other. In human-  
781 made structures, improvements have been made by modifying the cross sectional shapes

782 and material properties of cables and other support structures to avoid self-excitation  
783 through vortex shedding (Wilson, 2003; Tomita et al., 1988; Luongo and Piccardo, 1998).  
784 Improving the stability of large flexible structures, such as banners and flags, in strong  
785 winds remains problematic.

786

#### 787 **IV. Milestones to accelerate the infusion of math into the plant sciences**

788

789 Despite the rich history of integration between mathematics and plant biology, sadly many  
790 members of each discipline remain uninformed about the other. Mathematical modeling  
791 has provided foundational insights into plant biology, but until recently, only a minority of  
792 plant biologists have become versed in math, and even if quantitative, the expertise of plant  
793 biologists is often limited to programming, computation, and statistics. Reciprocally,  
794 mathematicians are often unaware of the tremendous empirical theory that plant biologists  
795 have developed and lack the perspective of their biological training, limiting their  
796 contributions to the plant sciences. Both mathematics and plant biology are timely  
797 disciplines, especially in a world ever increasingly geared towards a quantitative mindset  
798 and with dwindling natural resources. Both disciplines need to be emphasized more in  
799 early education and come together through opportunities to interact, including workshops,  
800 meetings, and funding opportunities. Both fields can immediately benefit from more open  
801 approaches to science.

802

##### 803 *A. Education*

804

805 The accuracy of mathematics in helping to understand the “reality” of biological processes  
806 depends on how well the hypotheses supporting the definition of models fit with the real  
807 world (May, 2004). A modeling perspective is itself one of the principal advantages that  
808 integrating mathematics into plant science curriculums has to offer. Mathematics has been  
809 likened to “biology’s next microscope”, because of the insights into an otherwise invisible  
810 world it has to offer. Conversely, biology has been described as “mathematics’ next  
811 physics”, stimulating novel mathematical approaches because of the hitherto unrealized



812 phenomena that it studies (Cohen, 2004). The scale of the needed interplay between  
813 mathematics and plant biology is enormous and may lead to new science disciplines at the  
814 interface of both: ranging from the cellular, tissue, organismal, and community levels to the  
815 global; touching upon genetic, transcriptional, proteomic, metabolite, and morphological  
816 data; studying the dynamic interactions of plants with the environment or the evolution of  
817 new forms over geologic time; and spanning quantification, statistics, and mechanistic  
818 mathematical models. It is important to remember that teaching this new synthesis is not  
819 as simple as educating students with “naïve” minds. Rather, curriculums must be tailored in  
820 such a way that students are competent to understand the skillsets they lack to tackle  
821 specific problems or attain more nuanced understanding of phenomena (Gross, 2004). Or  
822 to put this another way, students need to be taught how they can understand the  
823 limitations of their own knowledge.

824  
825 The new age of research is becoming increasingly interdisciplinary and undergraduate,  
826 graduate, and post-graduate groups are actively trying to fix the archaic separation  
827 between mathematics and biology skillsets. While many graduate programs have  
828 specialization tracks under the umbrella of mathematics or biology-specific programs,  
829 more frequently departments are forming specially designed graduate groups for  
830 mathematical biology. Plant biology professors and researchers at the postdoctoral level  
831 need to reach out to these programs at their schools. We encourage researchers at the  
832 principal investigator and post-doctoral level to become more active in departments with  
833 their university that house young researchers being trained in these programs.  
834 Recruitment of students from these programs takes advantage of the inherent desire to  
835 pursue mathematics and biology-focused research. Since one of the main problems  
836 separating fields is each field learning the jargon of the other (Oleana, 2014), guest lectures  
837 in courses within these new graduate programs would introduce how each field  
838 approaches research. The most powerful way to connect mathematics and plant biology is  
839 to first acknowledge our presence to this emerging pool of young researchers.

840

841 *B. Citizen science, the maker movement, and public outreach*

842

843 Citizen science, which is a method to make the general public aware of scientific problems  
844 and employ their help in solving them<sup>2</sup>, is an ideal platform to initiate a synthesis between  
845 plant biology and mathematics because of the relatively low cost and accessibility of each  
846 field. A variety of research fields have successfully implemented citizen science and  
847 gamification approaches, including astronomy<sup>3</sup>, animal biology<sup>4</sup>, and cell biology<sup>5</sup>.

848

849 Arguably, using citizen science to collect plant morphological diversity has already been  
850 achieved, but has yet to be analyzed fully. In total, it is estimated that the herbaria of the  
851 world possess greater than 207 million voucher specimens<sup>6</sup>, representing the diverse  
852 lineages of land plants (and often algae as well) collected over their respective  
853 biogeographies over a timespan of centuries. Both herbaria and living collections of botanic  
854 gardens are dynamic. Although plant collecting is in decline, it is an active discipline and  
855 voucher submissions to herbaria should be encouraged (Prather et al., 2004). Botanic  
856 gardens not only possess living collections, but more than ever they spearhead bio-  
857 conservation efforts to ensure plant diversity exists in the future to be studied (Schatz,  
858 2002). Digital documentation of the millions of vouchers held by the world's botanic  
859 gardens is actively underway, allowing for researchers and citizens alike to access and  
860 study for themselves the wealth of plant diversity across the globe and centuries (Smith et  
861 al., 2003; Corney et al., 2012; Ryan, 2013).

862

863 Beyond herbaria and botanic gardens, the developmental changes in plants responding to  
864 environmental variability and microclimatic changes over the course of a growing season  
865 can be analyzed by studying phenology. Citizen science projects such as the USA National  
866 Phenology Network<sup>7</sup> or Earthwatch<sup>8</sup> and associated programs such as My Tree Tracker<sup>9</sup>

---

<sup>2</sup> For example, see the White Paper on Citizen Science for Europe, [http://www.socientize.eu/sites/default/files/white-paper\\_0.pdf](http://www.socientize.eu/sites/default/files/white-paper_0.pdf) (retrieved May 29, 2016)

<sup>3</sup> Galaxy Zoo, <http://www.galaxy.zoo.org/> (retrieved May 29, 2016)

<sup>4</sup> Wisconsin Wildlife Watch, <https://www.zooniverse.org/projects/zooniverse/wisconsin-wildlife-watch> (retrieved May 29, 2016)

<sup>5</sup> Cell slider, <http://www.cellslider.net/#/> (retrieved May 29, 2016)

<sup>6</sup> List of herbaria, [https://en.wikipedia.org/wiki/List\\_of\\_herbaria](https://en.wikipedia.org/wiki/List_of_herbaria) (retrieved May 29, 2016)

<sup>7</sup> <https://www.usanpn.org/#> (retrieved May 29, 2016)

<sup>8</sup> <http://earthwatch.org/scientific-research/special-initiatives/urban-resiliency> (retrieved May 29, 2016)

867 document populations and individual plants over seasons and years, providing a  
868 distributed, decentralized network of scientific measurements. Integrating phenological  
869 data—essentially plant morphological measurements over time—with weather modeling  
870 and satellite data promises to provide meaningful predictions of the ecological  
871 consequences of climate change.

872

873 Citizen science is also enabled by low-cost, specialized equipment. Whether programming a  
874 camera to automatically take pictures at specific times or automating a watering schedule  
875 for a garden, the maker movement—a do-it-yourself cultural phenomenon that intersects  
876 with hacker culture—focuses on building custom, programmable hardware, whether via  
877 electronics, robotics, 3D-printing, or time-honored skills such as metal- and woodworking.  
878 The focus on programming is especially relevant for integrating mathematical approaches  
879 with plant science experiments. Originally built for education, single-board computers like  
880 Raspberry Pi, Hummingboard, or Cubieboard, are microcomputers that are widely adopted  
881 by educators, hobbyists and researchers that have enabled the maker culture. Single-board  
882 computers are used for diverse tasks, from logging and distributing data from  
883 environmental sensors to playing MineCraft. The low-cost of single-board computers  
884 computers (\$5.00- \$35.00, depending on model) makes tinkering more permissive for a  
885 greater population of citizen science than previously feasible. In classrooms,  
886 microcomputers can be used simply as a computer station, or incorporated into lesson  
887 plans using a variety of available teaching resources<sup>10</sup>. Single-board computers enable the  
888 early cultivation of interest in computational science through educational modules that can  
889 grow in complexity with student ability.

890

### 891 *C. Workshops and funding opportunities*

892

893 Simply bringing mathematicians and plant biologists together to interact, to learn about  
894 tools, approaches, and opportunities in each discipline that researchers may not be aware

---

<sup>9</sup> <http://www.mytreetracker.org/cwis438/websites/MyTreeTracker/About.php?WebSiteID=23> (retrieved May 29, 2016)

<sup>10</sup> <https://www.raspberrypi.org/resources/> (retrieved May 29, 2016)

895 of, is a major barrier preventing the full integration of these two disciplines. This white  
896 paper itself is a testament to the power of bringing mathematicians and biologists together,  
897 resulting from a National Institute for Mathematical and Biological Synthesis (NIMBioS)  
898 workshop titled “Morphological Plant Modeling: Unleashing Geometric and Topologic  
899 Potential within the Plant Sciences”, held at the University of Tennessee, Knoxville  
900 September 2-4, 2015<sup>11</sup> (**Figure 8**). Other mathematical institutes such as the Mathematical  
901 Biology Institute (MBI) at Ohio State University<sup>12</sup>, the Statistical and Applied Mathematical  
902 Sciences Institute (SAMSI) in Research Triangle Park<sup>13</sup>, the Institute for Mathematics and  
903 Its Applications at University of Minnesota<sup>14</sup>, and the Centre for Plant Integrative Biology at  
904 the University of Nottingham<sup>15</sup> have also hosted workshops for mathematical and  
905 quantitative biologists from the undergraduate student to the faculty level.  
906 There are efforts to unite biologists and mathematics through initiatives brought forth  
907 from The National Science Foundation, including Mathematical Biology Programs<sup>16</sup> and the  
908 Joint DMS/NIGMS Initiative to Support Research at the Interface of the Biological and  
909 Mathematical Sciences<sup>17</sup> (DMS/NIGMS). Outside of the Mathematics and Life Sciences  
910 Divisions, the Division of Physics houses a program on the Physics of Living Systems.  
911 Societies such as The Society for Mathematical Biology and the Society for Industrial and  
912 Applied Mathematics (SIAM) Life Science Activity Group<sup>18</sup> are focused on the dissemination  
913 of research at the intersection of math and biology, creating many opportunities to present  
914 research and provide funding. One of the problems in the creation of an active intersection  
915 of mathematicians and plant biologists is that scientists often describe themselves as one  
916 or the other. Ways to actively unite these fields would be to incorporate cross topic  
917 sessions, inviting scientists from mathematics and plant biology to speak in an effort to  
918 inform each discipline and initiatives for cross-trained scientists that bridge both

---

11 [http://www.nimbios.org/workshops/WS\\_plantmorph](http://www.nimbios.org/workshops/WS_plantmorph) (retrieved May 29, 2016)

12 <https://mbi.osu.edu/> (retrieved May 29, 2016)

13 <http://www.samsi.info/> (retrieved May 29, 2016)

14 <https://www.ima.umn.edu/> (retrieved May 29, 2016)

15 <https://www.qplib.ac.uk/outreach/qplib-summer-school/> (retrieved May 29, 2016)

16 [https://www.nsf.gov/funding/pgm\\_summ.jsp?pims\\_id=5690](https://www.nsf.gov/funding/pgm_summ.jsp?pims_id=5690) (retrieved May 29, 2016)

17 [http://www.nsf.gov/funding/pgm\\_summ.jsp?pims\\_id=5300&org=DMS](http://www.nsf.gov/funding/pgm_summ.jsp?pims_id=5300&org=DMS) (retrieved May 29, 2016)

18 <https://www.siam.org/activity/life-sciences/> (retrieved May 29, 2016)

919 disciplines. Funding initiatives to help promote these sessions and provide travel stipends  
920 to attend conferences for this specific purpose could greatly enhance collaboration of the  
921 plant sciences and mathematics. Another possibility is funding for a joint meeting where  
922 mathematicians and plant biologists are paired together to work on a dataset together. This  
923 has worked well in computer science contexts and reaches a broad audience<sup>19</sup>.

924

#### 925 *D. Open Science*

926

927 Ultimately, mathematicians and plant biology must unite at the level of jointly collecting  
928 data, analyzing it, and doing science together. Sharing data and code is perhaps the easiest  
929 way to unite these two disciplines, reducing redundancy and providing benchmarked  
930 datasets from which radically different interpretation of plant morphology can be  
931 compared. Great strides have already been made in creating an open science environment,  
932 but much work remains to increase the number of accessible datasets and code and to use  
933 such open access to facilitate communication between plant biologists and mathematicians  
934 that might not otherwise interact.

935

936 A number of platforms provide open, public access to datasets, figures, and code that can be  
937 shared, including Dryad<sup>20</sup>, Dataverse<sup>21</sup>, and Figshare<sup>22</sup>. These services are integrated to  
938 journals and the publication of articles to varying degrees, and have different limitations on  
939 the amount of data that can be stored and contrasting financial models. Beyond the ability  
940 to share data is the question of open data formats and accessibility. For example, in remote  
941 sensing research it is unfortunately common that proprietary data formats are shared,  
942 which prevents their use without specific software. ASCII format is universal, but it has  
943 issues with performance and storage size that can become an obstacle with large datasets.  
944 Open binary data formats are needed to ensure data availability and accessibility in  
945 interdisciplinary research. Hierarchical Data Formats (HDF) 4 and 5 are a good example of

---

<sup>19</sup> Hack the Dinos, American Museum of Natural History, <http://www.amnh.org/calendar/hack-the-dinos> (retrieved May 29, 2016)

<sup>20</sup> <http://datadryad.org/> (retrieved May 29, 2016)

<sup>21</sup> <http://dataverse.org/> (retrieved May 29, 2016)

<sup>22</sup> <https://figshare.com/> (retrieved May 29, 2016)

946 this<sup>23</sup>. For point cloud data describing 3D structures, ASPRS .las<sup>24</sup> and .e57 (Huber, 2011)  
947 formats have been designed with distributability in mind. Phenopackets is a new format  
948 that aims to handle a wide range of phenotypic and environmental data in big datasets<sup>25</sup>.

949  
950 Beyond datasets, making code openly available, citable and user friendly is a means to  
951 share methods to analyze data. Places to easily share code include web-based version  
952 controlled platforms like Bitbucket<sup>26</sup> or Github<sup>27</sup> and software repositories like  
953 Sourceforge<sup>28</sup>. Most of these platforms allow the easy generation of DOI associated with the  
954 dataset or code. For example, with Github you can automatically obtain a DOI for your  
955 repository through Zenodo<sup>29</sup>. Initiatives like Depsy<sup>30</sup> are trying to put into value the work  
956 of research software developers that most of the times goes unnoticed. Also, these  
957 repositories allow for distributed version control, which makes it easier for multiple  
958 developers to work and collaborate on the same code.

959  
960 The most powerful open science tools bring datasets, code, and analysis together in unique,  
961 accessible ways. Meta-analysis datasets provide curated resources where numerous  
962 published and unpublished datasets related to a specific problem (or many problems) can  
963 be accessed by researchers<sup>31</sup>. The portability and interoperability of disparate datasets  
964 between software tools can be overcome with standardized formats. The crucial element is  
965 that such formats are somehow reflective of universal plant morphological features,  
966 bridging the gap between programming languages and biology, as seen in the Root System  
967 Mark-up Language (Lobet et al., 2015) and OpenAlea (Pradal et al., 2008). Bisque is a  
968 versatile platform to store, organize, and analyze image data, providing simultaneously  
969 open access to data and analyses as well as the requisite computation (Kvilekval et al.,

---

23 <http://www.hdfgroup.org/> (retrieved May 29, 2016)

24 [http://www.asprs.org/a/society/committees/standards/LAS\\_1\\_4\\_r13.pdf](http://www.asprs.org/a/society/committees/standards/LAS_1_4_r13.pdf) (retrieved May 29, 2016)

25 <https://github.com/phenopackets> (retrieved September 24, 2016)

26 <https://bitbucket.org/> (retrieved May 29, 2016)

27 <https://github.com/> (retrieved May 29, 2016)

28 <https://sourceforge.net/> (retrieved May 29, 2016)

29 <http://zenodo.org/> (retrieved May 29, 2016)

30 <http://depsy.org/> (retrieved May 29, 2016)

31 BAAD: a Biomass And Allometry Database for woody plants, <https://github.com/dfalster/baad> (retrieved May 29, 2016)

970 2010). CyVerse<sup>32</sup> (formerly iPlant) is a similar platform, on which academic users get 100  
971 GB storage for free and can create analysis pipelines that can be shared and reused (Goff et  
972 al., 2011). For example, DIRT<sup>33</sup> is an automatic, high throughput computing platform  
973 (Bucksch et al., 2014c; Das et al., 2015) that the public can use hosted on CyVerse using the  
974 Texas Advanced Computing Center<sup>34</sup> (TACC) resources at UT Austin that robustly extracts  
975 root traits from digital images.

976  
977 Regardless of the specific purpose of an open science dataset, analysis, or platform, the key  
978 point is that the data be accessible and generalizable to the widest audience as possible. For  
979 both plant biologists and mathematicians, formatting open data can take inordinate  
980 amounts of time. Effective data sharing can be accomplished by making raw data available  
981 as well as processed data, and documenting the steps that were used to arrived at the  
982 processed data<sup>35</sup>. Data should always be accompanied by a codebook, metadata describing  
983 each variable used, and when at all possible, be “tidy data” (that is, a data frame with  
984 columns for each variable and rows for each observation that is immediately accessible for  
985 data analysis and visualization, Wickham, 2014). Beyond datasets, there are  
986 recommendations for organizing file structures and documenting progress (Noble, 2009)  
987 as well as programming itself (Wilson et al., 2014). Further, the discoverability of biological  
988 data to mathematicians is key: ideally public data would be accompanied by information  
989 including outstanding questions that mathematics may be able to solve or reasons why the  
990 dataset should be explored in alternative ways to how it has already been analyzed. Well-  
991 formatted data can be made public easily enough, but experimental metadata alone may  
992 not be sufficient to generate further interest. While the above are attempts to make  
993 biological data more accessible to mathematicians, the reciprocal direction of sharing is  
994 less well represented. In fact, evidence suggests that using equations (one of the primary  
995 means by which mathematicians share their work) impedes communication with biologists

---

32 <http://www.cyverse.org/> (retrieved August 20, 2016)

33 <http://dir.t.iplantcollaborative.org/> (retrieved August 20, 2016)

34 <https://www.tacc.utexas.edu/> (retrieved August 20, 2016)

35 How to share data with a statistician, <https://github.com/jtleek/datasharing> (retrieved May 29, 2016)

996 (Fawcett and Higginson, 2012). Providing context and narrative, in addition to the  
997 interactions between plant biology and mathematics outlined in this paper, should help the  
998 accessibility of math and its contingent equations to biologists.

999

## 1000 **V. Conclusion: Unleashing geometric and topologic potential within the plant** 1001 **sciences**

1002

1003 The plant form is inherently architectural, from the shapes of leaves to the hierarchies in  
1004 the branching patterns of shoots and roots. Plant morphology has served as an inspiration  
1005 to mathematicians, who innovated new methods to quantify and model the plant form as a  
1006 result of evolutionary, developmental and environmental responses (**Figures 1-2**). Plant  
1007 morphology is an unresolved mystery to plant biologists, who seek to understand the  
1008 molecular mechanisms by which such predetermined, yet seemingly endless variations of  
1009 organizational patterns emerge.

1010

1011 Never have the resources to study plant morphology been more plentiful. Burgeoning  
1012 imaging technologies—innovative confocal microscopy, X-ray imaging, MRI, radar,  
1013 terrestrial laser scanning, among many others—have made detailed 3D models of plants  
1014 feasible (**Figures 3-4**). Imaging across time and scales looks behind the curtains from the  
1015 sub-cellular scale to the entirety of the earth surface. The mathematical methods to model  
1016 plant morphology, from Turing's reaction-diffusion processes to innovative shape  
1017 descriptors, quantify the plant form to be used in a wide-variety of biological applications  
1018 (**Figure 6**).

1019

1020 Yet, all models are idealizations of reality and seemingly simple problems remain  
1021 unresolved in the study of plant morphology. Integrating observations at different scales is  
1022 a persistent challenge. We discussed for example that the ability to model the fluttering of  
1023 leaves within a tree canopy remains out of reach (**Figure 7**). Interest in the hidden half of  
1024 plant morphology—the root system—has only recently seen a renaissance with  
1025 technologies capable of penetrating soil and visualizing roots *in situ* (**Figure 5**). Not only is



1026 describing phenotype problematic, but linking it to a genetic and (especially in plants)  
1027 environmental basis, within the context of plant evolution, is still an unattained goal. Never  
1028 have the answers to these questions been more vital and timely. Modifying plant  
1029 architecture through molecular biology and breeding is key to develop agricultural outputs  
1030 and sustainability. Monitoring the morphology of plants in response to a shifting  
1031 environment is necessary to model global responses to climate change. Cross-disciplinary  
1032 training of scientists, citizen science, and open science are all necessary components to  
1033 address these needs (**Figure 8**). Unleashing the potential of geometric and topological  
1034 approaches in the plant sciences promises to transform our understanding of both plants  
1035 and mathematics, and to meet the challenges posed by a future with dwindling and  
1036 uncertain natural resources.

1037

### 1038 **Funding**

1039

1040 This manuscript resulted from the National Institute for Mathematical and Biological  
1041 Synthesis (NIMBioS) workshop on plant morphological models at the University of  
1042 Tennessee, Knoxville, held September 2-4, 2015, resulting from a proposal submitted by  
1043 Alex Bucksch and Dan Chitwood.

1044

### 1045 **Acknowledgements**

1046

1047 The authors are grateful to the National Institute for Mathematical and Biological Synthesis  
1048 (NIMBioS, University of Tennessee, Knoxville) for hosting and funding the workshop  
1049 “Morphological Plant Modeling: Unleashing geometric and topological potential within the  
1050 plant sciences” that inspired this manuscript.

1051

1052

1053

1054

1055

1056

1057 **References**

- 1058
- 1059 Aiteanu, F. and Klein, R. (2014). Hybrid tree reconstruction from inhomogeneous point  
1060 clouds. *Visual Comput.* 30, 763-771. doi: 10.1007/s00371-014-0977-7
- 1061
- 1062 Alben, S., Shelley, M. and Zhang, J. (2002). Drag reduction through self-similar bending of a  
1063 flexible body. *Nature* 420, 479-481. doi:10.1038/nature01232
- 1064
- 1065 Alim, K., Hamant, O., & Boudaoud, A. (2012). Regulatory role of cell division rules on tissue  
1066 growth heterogeneity. *Front. Plant Sci.*, 3: 174. doi: 10.3389/fpls.2012.00174
- 1067
- 1068 Anderson, J.T., Wagner, M.R., Rushworth, C.A., Prasad, K.V.S.K. and Mitchell-Olds, T. (2014).  
1069 The evolution of quantitative traits in complex environments. *Heredity* 112, 4-12.  
1070 doi:10.1038/hdy.2013.33
- 1071
- 1072 Atkins, A. (1843). *British Algae: Cyanotype Impressions. Halstead Place, Sevenoaks.*  
1073 *Privately printed*, 3, 1843–1853.
- 1074
- 1075 Atkins, A. (1853). *Cyanotypes of British and Foreign Ferns*, (Private publication). Copy at the  
1076 J. Paul Getty Museum, Los Angeles, USA.
- 1077
- 1078 Atlan, A., Hornoy, B., Delerue, F., Gonzalez, M., Pierre, J.S. and Tarayre, M. (2015).  
1079 Phenotypic Plasticity in Reproductive Traits of the Perennial Shrub *Ulex europaeus* in  
1080 Response to Shading: A Multi-Year Monitoring of Cultivated Clones. *PLoS ONE* 10(9),  
1081 e0137500. doi:10.1371/journal.pone.0137500
- 1082
- 1083 Bailey, I.W. and Sinnott, E.W. (1915). A botanical index of Cretaceous and Tertiary climates.  
1084 *Science* 41, 831-834.
- 1085
- 1086 Baldazzi, V., Bertin, N., De Jong, H. and Génard, M. (2012). Towards multiscale plant models:  
1087 integrating cellular networks. *Trends Plant Sci.* 17, 728-736. doi:  
1088 <http://dx.doi.org/10.1016/j.tplants.2012.06.012>
- 1089
- 1090 Band, L.R. and King, J.R. (2012). Multiscale modelling of auxin transport in the plant-root  
1091 elongation zone. *J. Math. Biol.* 65, 743-785. doi:10.1007/s00285-011-0472-y
- 1092
- 1093 Band, L.R., Fozard, J.A., Godin, C., Jensen, O.E., Pridmore, T., Bennett, M.J. and King, J.R.  
1094 (2012). Multiscale systems analysis of root growth and development: modeling beyond the  
1095 network and cellular scales. *Plant Cell* 24, 3892-3906. doi: [http://dx.doi.org/10.1105/tpc.](http://dx.doi.org/10.1105/tpc.112.101550)  
1096 112.101550
- 1097
- 1098 Bao, Y., Aggarwal, P., Robbins, N.E., Sturrock, C.J., Thompson, M.C., Tan, H.Q., Tham, C., Duan,  
1099 L., Rodriguez, P.L., Vernoux, T. and Mooney, S.J. (2014). Plant roots use a patterning  
1100 mechanism to position lateral root branches toward available water. *Proc. Natl. Acad. Sci.*  
1101 *U.S.A.* 111, 9319-9324. doi: 10.1073/pnas.1400966111

- 1102  
1103 Barnes, C.R. (1898). *Plant life considered with special reference to form and function*. New  
1104 York: Henry Colt Company.  
1105  
1106 Battogtokh D. and Tyson J. J. (2016). A bistable switch mechanism for stem cell domain  
1107 nucleation in the shoot apical meristem. *Front. Plant Sci.* 7, 674. doi:  
1108 10.3389/fpls.2016.00674  
1109  
1110 Benfey, P.N. and Mitchell-Olds, T. (2008). From genotype to phenotype: systems biology  
1111 meets natural variation. *Science* 320, 495-497. doi: 10.1126/science.1153716  
1112  
1113 Benz, B.W. and Martin, C.E. (2006). Foliar trichomes, boundary layers, and gas exchange in  
1114 12 species of epiphytic *Tillandsia* (Bromeliaceae). *J. Plant Physiol.* 163, 648-656. doi:  
1115 <http://dx.doi.org/10.1016/j.jplph.2005.05.008>  
1116  
1117 Bernasconi, G.P. (1994). Reaction-diffusion model for phyllotaxis. *Physica D: Nonlinear*  
1118 *Phenom.* 70, 90-99. doi:10.1016/0167-2789(94)90058-2  
1119  
1120 Bernstein, N., Silk, W.K. and Läuchli, A. (1993). Growth and development of sorghum leaves  
1121 under conditions of NaCl stress. *Planta* 191, 433-439. doi:10.1007/BF00195744  
1122  
1123 Bernstein, N., Silk, W.K. and Läuchli, A. (1995). Growth and development of sorghum leaves  
1124 under conditions of NaCl stress: possible role of some mineral elements in growth  
1125 inhibition. *Planta* 196, 699-705. doi:10.1007/BF00197334  
1126  
1127 Besson, S. and Dumais, J. (2011). Universal rule for the symmetric division of plant cells.  
1128 *Proc. Natl. Acad. Sci. U.S.A.* 108, 6294-6299. doi: 10.1073/pnas.1011866108  
1129  
1130 Bhalerao, R.P. and Bennett, M.J. (2003). The case for morphogens in plants. *Nat. Cell Biol.* 5,  
1131 939-943. doi: 10.1038/ncb1103-939  
1132  
1133 Black, C., Black, A. (1839). Hall Map of the Mountains. Plants of America. Geographicus.  
1134 After Alexander von Humboldt. Drawn and engraved by Aikman, G.  
1135  
1136 Bookstein, F. L. (1997). *Morphometric tools for landmark data: geometry and biology*.  
1137 Cambridge University Press.  
1138  
1139 Borchert, R., & Slade, N. A. (1981). Bifurcation ratios and the adaptive geometry of trees.  
1140 *Bot. Gaz.* 394-401.  
1141  
1142 Bose, J.C. (1926). *The nervous mechanism of plants*. London: Longmans, Green and Co.  
1143  
1144 Bose, J.C. (1928). *Motor mechanism of plants*. London: Longmans, Green and Co.  
1145

- 1146 Boyde, A. (1973). Quantitative photogrammetric analysis and qualitative stereoscopic  
1147 analysis of SEM images. *J. Microsc.* 98, 452-471. doi: 10.1111/j.1365-2818.1973.tb03846.x  
1148
- 1149 Brachi, B., Morris, G.P. and Borevitz, J.O. (2011). Genome-wide association studies in plants:  
1150 the missing heritability is in the field. *Genome Biol.* 12, 1-8. doi: 10.1186/gb-2011-12-10-  
1151 232  
1152
- 1153 Bradshaw, A.D. (1965). Evolutionary significance of phenotypic plasticity in plants. *Adv.*  
1154 *Genet.* 13, 115-155.  
1155
- 1156 Braybrook, S.A. and Jönsson, H. (2016). Shifting foundations: the mechanical cell wall and  
1157 development. *Curr. Opin. Plant Biol.* 29, 115-120. doi:  
1158 <http://dx.doi.org/10.1016/j.pbi.2015.12.009>  
1159
- 1160 Briggs, W.R. (2014). Phototropism: some history, some puzzles, and a look ahead. *Plant*  
1161 *Physiol.* 164, 13-23. doi: <http://dx.doi.org/10.1104/pp.113.230573>  
1162
- 1163 Brooks, T.L.D., Miller, N.D. and Spalding, E.P. (2010). Plasticity of Arabidopsis root  
1164 gravitropism throughout a multidimensional condition space quantified by automated  
1165 image analysis. *Plant Physiol.* 152, 206-216.  
1166
- 1167 Brüchert, F., Speck, O. and Spatz, H.C. (2003). Oscillations of plants' stems and their  
1168 damping: theory and experimentation. *Philos. Trans. R. Soc. B* 358, 1487-1492. doi:  
1169 10.1098/rstb.2003.1348  
1170
- 1171 Bucksch, A., Lindenbergh, R. and Menenti, M. (2010). SkelTre. *Visual Comput.* 26, 1283-  
1172 1300. doi:10.1007/s00371-010-0520-4  
1173
- 1174 Bucksch, A.K. (2011). *Revealing the skeleton from imperfect point clouds*. TU Delft, Delft  
1175 University of Technology.  
1176
- 1177 Bucksch, A. and Fleck, S. (2011). Automated detection of branch dimensions in woody  
1178 skeletons of fruit tree canopies. *Photogramm. Eng. Remote Sens.* 77, 229-240. doi:  
1179 <http://dx.doi.org/10.14358/PERS.77.3.229>  
1180
- 1181 Bucksch, A. (2014a). A practical introduction to skeletons for the plant sciences. *Appl. Plant*  
1182 *Sci.* 2.apps.1400005. doi: 10.3732/apps.1400005  
1183
- 1184 Bucksch, A., Turk, G. and Weitz, J. S. (2014b). The fiber walk: A model of tip-driven growth  
1185 with lateral expansion. *PLoS ONE* 9: e85585. doi:  
1186 <http://dx.doi.org/10.1371/journal.pone.0085585>  
1187
- 1188 Bucksch, A., Burrridge, J., York, L.M., Das, A., Nord, E., Weitz, J.S. and Lynch, J.P. (2014c).  
1189 Image-based high-throughput field phenotyping of crop roots. *Plant Physiol.* 166, 470-486.  
1190 doi: <http://dx.doi.org/10.1104/pp.114.243519>

- 1191  
1192 Carriedo, L.G., Maloof, J.N. and Brady, S.M. (2016). Molecular control of crop shade  
1193 avoidance. *Curr. Opin. Plant Biol.* 30, 151-158. doi:  
1194 <http://dx.doi.org/10.1016/j.pbi.2016.03.005>  
1195  
1196 Casal, J.J. (2013). Photoreceptor signaling networks in plant responses to shade. *Annu. Rev.*  
1197 *Plant Biol.* 64, 403-427. doi: 10.1146/annurev-arplant-050312-120221  
1198  
1199 Casimiro, I., Marchant, A., Bhalerao, R.P., Beeckman, T., Dhooge, S., Swarup, R., Graham, N.,  
1200 Inzé, D., Sandberg, G., Casero, P.J. and Bennett, M. (2001). Auxin transport promotes  
1201 Arabidopsis lateral root initiation. *Plant Cell* 13, 843-852. doi: [http://dx.doi.org/10.1105/](http://dx.doi.org/10.1105/tpc.13.4.843)  
1202 [tpc.13.4.843](http://dx.doi.org/10.1105/tpc.13.4.843)  
1203  
1204 Chimungu, J.G., Brown, K.M. and Lynch, J.P. (2014a). Large root cortical cell size improves  
1205 drought tolerance in maize. *Plant Physiol.* 166, 2166-2178. doi: [http://dx.doi.org/10.1104/](http://dx.doi.org/10.1104/pp.114.250449)  
1206 [pp.114.250449](http://dx.doi.org/10.1104/pp.114.250449)  
1207  
1208 Chimungu, J.G., Brown, K.M. and Lynch, J.P. (2014b). Reduced root cortical cell file number  
1209 improves drought tolerance in maize. *Plant Physiol.* 166, 1943-1955. doi: [http://dx.doi.org/](http://dx.doi.org/10.1104/pp.114.249037)  
1210 [10.1104/pp.114.249037](http://dx.doi.org/10.1104/pp.114.249037)  
1211  
1212 Chimungu, J.G., Maliro, M.F., Nalivata, P.C., Kanyama-Phiri, G., Brown, K.M. and Lynch, J.P.  
1213 (2015). Utility of root cortical aerenchyma under water limited conditions in tropical maize  
1214 (*Zea mays* L.). *Field Crops Res.* 171, 86-98. doi: <http://dx.doi.org/10.1016/j.fcr.2014.10.009>  
1215  
1216 Chitwood, D.H., Headland, L.R., Ranjan, A., Martinez, C.C., Braybrook, S.A., Koenig, D.P.,  
1217 Kuhlemeier, C., Smith, R.S. and Sinha, N.R. (2012a). Leaf asymmetry as a developmental  
1218 constraint imposed by auxin-dependent phyllotactic patterning. *Plant Cell* 24, 2318-2327.  
1219 doi: <http://dx.doi.org/10.1105/tpc.112.098798>  
1220  
1221 Chitwood, D.H., Naylor, D.T., Thammaphichai, P., Weeger, A.C., Headland, L.R. and Sinha, N.R.  
1222 (2012b). Conflict between intrinsic leaf asymmetry and phyllotaxis in the resupinate leaves  
1223 of *Alstroemeria psittacina*. *Front. Plant Sci.* 3:182. doi: 10.3389/fpls.2012.00182  
1224  
1225 Chitwood, D.H., Headland, L.R., Kumar, R., Peng, J., Maloof, J.N. and Sinha, N.R. (2012c). The  
1226 developmental trajectory of leaflet morphology in wild tomato species. *Plant Physiol.* 158,  
1227 1230-1240. doi: <http://dx.doi.org/10.1104/pp.111.192518>  
1228  
1229 Chitwood, D.H., Kumar, R., Headland, L.R., Ranjan, A., Covington, M.F., Ichihashi, Y., Fulop, D.,  
1230 Jiménez-Gómez, J.M., Peng, J., Maloof, J.N. and Sinha, N.R. (2013). A quantitative genetic  
1231 basis for leaf morphology in a set of precisely defined tomato introgression lines. *Plant Cell*  
1232 25, 2465-2481. doi: <http://dx.doi.org/10.1105/tpc.113.112391>  
1233  
1234 Chitwood, D.H., Ranjan, A., Kumar, R., Ichihashi, Y., Zumstein, K., Headland, L.R., Ostria-  
1235 Gallardo, E., Aguilar-Martínez, J.A., Bush, S., Carriedo, L. and Fulop, D. (2014a). Resolving

- 1236 distinct genetic regulators of tomato leaf shape within a heteroblastic and ontogenetic  
1237 context. *Plant Cell* 26, 3616-3629. doi: <http://dx.doi.org/10.1105/tpc.114.130112>  
1238
- 1239 Chitwood, D.H., Ranjan, A., Martinez, C.C., Headland, L.R., Thiem, T., Kumar, R., Covington,  
1240 M.F., Hatcher, T., Naylor, D.T., Zimmerman, S. and Downs, N. (2014b). A modern  
1241 ampelography: a genetic basis for leaf shape and venation patterning in grape. *Plant*  
1242 *Physiol.* 164, 259-272. doi: <http://dx.doi.org/10.1104/pp.113.229708>  
1243
- 1244 Chitwood, D.H. (2014c). Imitation, genetic lineages, and time influenced the morphological  
1245 evolution of the violin. *PLoS ONE* 9: e109229. doi:10.1371/journal.pone.0109229  
1246
- 1247 Chitwood, D.H. and Topp, C.N. (2015). Revealing plant cryptotypes: defining meaningful  
1248 phenotypes among infinite traits. *Curr. Opin. Plant Biol.* 24, 54-60. doi:  
1249 <http://dx.doi.org/10.1016/j.pbi.2015.01.009>  
1250
- 1251 Chitwood, D.H., Rundell, S.M., Li, D.Y., Woodford, Q.L., Tommy, T.Y., Lopez, J.R., Greenblatt,  
1252 D., Kang, J. and Londo, J.P. (2016). Climate and developmental plasticity: interannual  
1253 variability in grapevine leaf morphology. *Plant Physiol.* 170, 1480-91. doi: [http://dx.doi.](http://dx.doi.org/10.1104/pp.15.01825)  
1254 [org/10.1104/pp.15.01825](http://dx.doi.org/10.1104/pp.15.01825)  
1255
- 1256 Chitwood, D.H. and Sinha, N.R. (2016). Evolutionary and Environmental Forces Sculpting  
1257 Leaf Development. *Curr. Biol.* 26, R297-R306. doi:  
1258 <http://dx.doi.org/10.1016/j.cub.2016.02.033>  
1259
- 1260 Clark, R.M., Wagler, T.N., Quijada, P. and Doebley, J. (2006). A distant upstream enhancer at  
1261 the maize domestication gene *tb1* has pleiotropic effects on plant and inflorescent  
1262 architecture. *Nat. Genet.* 38, 594-597. doi:10.1038/ng1784  
1263
- 1264 Clark, R.T., MacCurdy, R.B., Jung, J.K., Shaff, J.E., McCouch, S.R., Aneshansley, D.J. and  
1265 Kochian, L.V. (2011). Three-dimensional root phenotyping with a novel imaging and  
1266 software platform. *Plant Physiol.* 156, 455-465. doi: [http://dx.doi.org/10.1104/pp.110.](http://dx.doi.org/10.1104/pp.110.169102)  
1267 [169102](http://dx.doi.org/10.1104/pp.110.169102)  
1268
- 1269 Clausen, J., Keck, D.D. and Hiesey, W.M. (1941). Regional differentiation in plant species.  
1270 *Am. Nat.* 75, 231-250.  
1271
- 1272 Cohen, J.E. (2004). Mathematics is biology's next microscope, only better; biology is  
1273 mathematics' next physics, only better. *PLoS Biol.* 2: e439.  
1274 doi:10.1371/journal.pbio.0020439  
1275
- 1276 Coneva, V. and Chitwood, D.H. (2015). Plant architecture without multicellularity:  
1277 quandaries over patterning and the soma-germline divide in siphonous algae. *Front. Plant*  
1278 *Sci.* 6:287. doi: 10.3389/fpls.2015.00287  
1279

- 1280 Cordell, S., Goldstein, G., Mueller-Dombois, D., Webb, D. and Vitousek, P.M. (1998).  
1281 Physiological and morphological variation in *Metrosideros polymorpha*, a dominant  
1282 Hawaiian tree species, along an altitudinal gradient: the role of phenotypic plasticity.  
1283 *Oecologia* 113, 188-196. doi:10.1007/s004420050367  
1284
- 1285 Corney, D., Clark, J.Y., Tang, H.L. and Wilkin, P. (2012). Automatic extraction of leaf  
1286 characters from herbarium specimens. *Taxon* 61, 231-244.  
1287
- 1288 Das, A., Schneider, H., Burridge, J., Ascanio, A.K.M., Wojciechowski, T., Topp, C.N., Lynch, J.P.,  
1289 Weitz, J.S. and Bucksch, A. (2015). Digital imaging of root traits (DIRT): a high-throughput  
1290 computing and collaboration platform for field-based root phenomics. *Plant Methods* 11:  
1291 51. doi: 10.1186/s13007-015-0093-3  
1292
- 1293 Delagrangé, S., Jauvin, C. and Rochon, P. (2014). Pypetree: A tool for reconstructing tree  
1294 perennial tissues from point clouds. *Sensors* 14, 4271-4289. doi:10.3390/s140304271  
1295
- 1296 DeWitt T.J. (2016). Expanding the phenotypic plasticity paradigm to broader views of trait  
1297 space and ecological function. *Curr. Zool.* 62, 463-473. doi:  
1298 <http://dx.doi.org/10.1093/cz/zow085>  
1299
- 1300 DeWitt, T.J. and Scheiner, S.M. eds. (2004). *Phenotypic plasticity: functional and conceptual*  
1301 *approaches* (No. 576.53 P44). Oxford: Oxford University Press.  
1302
- 1303 Díaz, S., Kattge, J., Cornelissen, J.H., Wright, I.J., Lavorel, S., Dray, S., Reu, B., Kleyer, M., Wirth,  
1304 C., Prentice, I.C. and Garnier, E. (2016). The global spectrum of plant form and function.  
1305 *Nature* 529, 167-171. doi:10.1038/nature16489  
1306
- 1307 Doebley, J. (2004). The genetics of maize evolution. *Annu. Rev. Genet.* 38, 37-59. doi:  
1308 10.1146/annurev.genet.38.072902.092425  
1309
- 1310 Donner, T.J., Sherr, I. and Scarpella, E. (2009). Regulation of preprocambial cell state  
1311 acquisition by auxin signaling in *Arabidopsis* leaves. *Development* 136, 3235-3246. doi:  
1312 10.1242/dev.037028  
1313
- 1314 Dorken, M.E. and Barrett, S.C. (2004). Phenotypic plasticity of vegetative and reproductive  
1315 traits in monoecious and dioecious populations of *Sagittaria latifolia* (Alismataceae): a  
1316 clonal aquatic plant. *J. Ecol.* 92, 32-44. doi: 10.1111/j.1365-2745.2004.00857.x  
1317
- 1318 Douady, S. and Couder, Y. (1996). Phyllotaxis as a dynamical self organizing process part I:  
1319 the spiral modes resulting from time-periodic iterations. *J. Theoret. Biol.* 178, 255-273.  
1320 doi:10.1006/jtbi.1996.0024  
1321
- 1322 Drew, M.C. (1975). Comparison of the effects of a localised supply of phosphate, nitrate,  
1323 ammonium and potassium on the growth of the seminal root system, and the shoot, in  
1324 barley. *New Phytol.* 75, 479-490. doi: 10.1111/j.1469-8137.1975.tb01409.x

- 1325  
1326 Druka, A., Potokina, E., Luo, Z., Jiang, N., Chen, X., Kearsley, M. and Waugh, R. (2010).  
1327 Expression quantitative trait loci analysis in plants. *Plant Biotechnol. J.* 8, 10-27. Doi:  
1328 10.1111/j.1467-7652.2009.00460.x  
1329  
1330 Dumais, J. and Kwiatkowska, D. (2002). Analysis of surface growth in shoot apices. *The*  
1331 *Plant J.* 31, 229-241. doi: 10.1046/j.1365-313X.2001.01350.x  
1332  
1333 Dunbabin, V. M., Postma, J. A., Schnepf, A., Pagès, L., Javaux, M., Wu, L., ... and Diggle, A. J.  
1334 (2013). Modelling root-soil interactions using three-dimensional models of root growth,  
1335 architecture and function. *Plant Soil* 372, 93-124. doi:10.1007/s11104-013-1769-y  
1336  
1337 Duncanson, L.I., Dubayah, R.O. and Enquist, B.J. (2015). Assessing the general patterns of  
1338 forest structure: quantifying tree and forest allometric scaling relationships in the United  
1339 States. *Glob. Ecol. Biogeogr.* 24, 1465-1475. doi: 10.1111/geb.12371  
1340  
1341 Edelsbrunner, H. and Harer, J. (2010). *Computational topology: an introduction*. Rhode  
1342 Island: American Mathematical Society.  
1343  
1344 Eloy, C. (2011). Leonardo's rule, self-similarity, and wind-induced stresses in trees. *Phys.*  
1345 *Rev. Lett.* 107: 258101. doi: <http://dx.doi.org/10.1103/PhysRevLett.107.258101>  
1346  
1347 Ennos, A.R. (1997). Wind as an ecological factor. *Trends Ecol. Evol.* 12, 108-111.  
1348 doi:10.1016/S0169-5347(96)10066-5  
1349  
1350 Errera, L. (1886). Sur une condition fondamentale d'équilibre des cellules vivantes. *C. r.*  
1351 *hebd. séances Acad. sci.* 103, 822-824.  
1352  
1353 Esau, K. (1960). *Anatomy of Seed Plants*. New York: John Wiley & Sons Inc.  
1354  
1355 Etnier, S.A. and Vogel, S. (2000). Reorientation of daffodil (*Narcissus*: Amaryllidaceae)  
1356 flowers inwind: drag reduction and torsional flexibility. *Am. J. Bot.* 87, 29-32.  
1357  
1358 Fawcett, T.W. and Higginson, A.D. (2012). Heavy use of equations impedes communication  
1359 among biologists. *Proc. Natl. Acad. Sci. U.S.A.* 109, 11735-11739. doi:  
1360 10.1073/pnas.1205259109  
1361  
1362 Feng, Z., Chen, Y., Hakala, T., Hyyppä, J. (2016). Range Calibration of Airborne Profiling  
1363 Radar Used in Forest Inventory. IEEE Geoscience and Remote Sensing Society  
1364  
1365 Fiorani, F., Rascher, U., Jahnke, S. and Schurr, U. (2012). Imaging plants dynamics in  
1366 heterogenic environments. *Curr. Opin. Biotechnol.* 23, 227-235. doi:  
1367 <http://dx.doi.org/10.1016/j.copbio.2011.12.010>  
1368



- 1369 Fisher, R.A. (1925). *Statistical methods for research workers*. Guilford: Genesis Publishing  
1370 Pvt Ltd.  
1371
- 1372 Fisher, R.A. (1936). The use of multiple measurements in taxonomic problems. *Ann.*  
1373 *Eugenics* 7, 179-188.  
1374
- 1375 Flint-Garcia, S.A., Thornsberry, J.M. and IV, B. (2003). Structure of linkage disequilibrium in  
1376 plants. *Annu. Rev. Plant Biol.* 54, 357-374. doi: 10.1146/annurev.arplant.54.031902.134907  
1377
- 1378 Frary, A., Nesbitt, T.C., Frary, A., Grandillo, S., Van Der Knaap, E., Cong, B., Liu, J., Meller, J.,  
1379 Elber, R., Alpert, K.B. and Tanksley, S.D. (2000). fw2. 2: a quantitative trait locus key to the  
1380 evolution of tomato fruit size. *Science* 289, 85-88. doi: 10.1126/science.289.5476.85  
1381
- 1382 Friedman, W.E. and Diggle, P.K. (2011). Charles Darwin and the origins of plant  
1383 evolutionary developmental biology. *Plant Cell* 23, 1194-1207. doi:  
1384 <http://dx.doi.org/10.1105/tpc.111.084244>  
1385
- 1386 Fujita, H., Toyokura, K., Okada, K. and Kawaguchi, M. (2011). Reaction-diffusion pattern in  
1387 shoot apical meristem of plants. *PLoS ONE* 6: p.e18243. doi:  
1388 <http://dx.doi.org/10.1371/journal.pone.0018243>  
1389
- 1390 Galkovskyi, T., Mileyko, Y., Bucksch, A., Moore, B., Symonova, O., Price, C. A., ... & Harer, J.  
1391 (2012). GiA Roots: software for the high throughput analysis of plant root system  
1392 architecture. *BMC Plant Biol.* 12: 116. doi: 10.1186/1471-2229-12-116  
1393
- 1394 Gierer, A. and Meinhardt, H. (1972). A theory of biological pattern formation. *Kybernetik* 12,  
1395 30-39. doi:10.1007/BF00289234  
1396
- 1397 Godin, C. and Ferraro, P. (2010). Quantifying the degree of self-nestedness of trees:  
1398 Application to the structural analysis of plants. *IEEE/ACM Trans. Comput. Biol. Bioinform.* 7,  
1399 688-703. doi: 10.1109/TCBB.2009.29  
1400
- 1401 Goethe, J.W. (1790). *Versuch die Metamorphose der Pflanzen zu erklaren*. Gotha: Carl  
1402 Wilhelm Ettinger.  
1403
- 1404 Goethe, J.W. (1837). *Oeuvres d'Histoire Naturelle de Goethe*. Translated and annotated by  
1405 C.F. Martins. A.B. Cherbuliez, Paris.  
1406
- 1407 Goff, S.A., Vaughn, M., McKay, S., Lyons, E., Stapleton, A.E., Gessler, D., Matasci, N., Wang, L.,  
1408 Hanlon, M., Lenards, A. and Muir, A. (2011). The iPlant collaborative: cyberinfrastructure  
1409 for plant biology. *Front. Plant Sci.* 2:34. doi: 10.3389/fpls.2011.00034  
1410
- 1411 Gosselin, F.P. and De Langre, E. (2011). Drag reduction by reconfiguration of a poroelastic  
1412 system. *J. Fluids Struct.* 27, 1111-1123. doi:  
1413 <http://dx.doi.org/10.1016/j.jfluidstructs.2011.05.007>

- 1414  
1415 Grace, J. (1978). The turbulent boundary layer over a flapping *Populus* leaf. *Plant Cell*  
1416 *Environ.* 1, 35-38. doi: 10.1111/j.1365-3040.1978.tb00743.x  
1417  
1418 Grant, R.H. (1983). The scaling of flow in vegetative structures. *Boundary-Layer Meteorol.*  
1419 27, 171-184. doi: 10.1007/BF00239613  
1420  
1421 Green, P.B. (1999). Expression of pattern in plants: combining molecular and calculus-  
1422 based biophysical paradigms. *Am. J. Bot.* 86, 1059-1076.  
1423  
1424 Gross, L.J. (2004). Points of view: the interface of mathematics and biology  
1425 interdisciplinarity and the undergraduate biology curriculum: finding a balance. *Cell Biol.*  
1426 *Educ.* 3, 85-87. doi: 10.1187/cbe.04-03-0040  
1427  
1428 Gupta, M.D. and Nath, U. (2015). Divergence in patterns of leaf growth polarity is associated  
1429 with the expression divergence of miR396. *Plant Cell* 27, 2785-2799. doi:  
1430 <http://dx.doi.org/10.1105/tpc.15.00196>  
1431  
1432 Gutenkunst, R.N., Waterfall, J.J., Casey, F.P., Brown, K.S., Myers, C.R. and Sethna, J.P. (2007).  
1433 Universally sloppy parameter sensitivities in systems biology models. *PLoS Comput. Biol.* 3:  
1434 e189. doi: <http://dx.doi.org/10.1371/journal.pcbi.0030189>  
1435  
1436 Hallé, F., Oldeman, R. A., and Tomlinson, P. B. (1978). Opportunistic Tree Architecture. In  
1437 *Tropical trees and forests* (pp. 269-331). Springer Berlin Heidelberg.  
1438  
1439 Hamant, O., Heisler, M.G., Jönsson, H., Krupinski, P., Uyttewaal, M., Bokov, P., Corson, F.,  
1440 Sahlin, P., Boudaoud, A., Meyerowitz, E.M. and Couder, Y. (2008). Developmental patterning  
1441 by mechanical signals in Arabidopsis. *Science* 322, 1650-1655. doi:  
1442 10.1126/science.1165594  
1443  
1444 Hejnowicz, Z. and Karczewski, J. (1993). Modeling of meristematic growth of root apices in  
1445 a natural coordinate system. *Am. J. Bot.* 80, 309-315.  
1446  
1447 Hejnowicz, Z. and Romberger, J.A. (1984). Growth tensor of plant organs. *J. Theoret. Biol.*  
1448 110, 93-114. doi: 10.1016/S0022-5193(84)80017-X  
1449  
1450 Hill, K., Porco, S., Lobet, G., Zappala, S., Mooney, S., Draye, X. and Bennett, M.J. (2013). Root  
1451 systems biology: integrative modeling across scales, from gene regulatory networks to the  
1452 rhizosphere. *Plant Physiol.* 163, 1487-1503. doi: <http://dx.doi.org/10.1104/pp.113.227215>  
1453  
1454 Hofhuis, H., Moulton, D., Lessinnes, T., Routier-Kierzkowska, A.L., Bompfrey, R.J., Mosca, G.,  
1455 Reinhardt, H., Sarchet, P., Gan, X., Tsiantis, M., Ventikos, Y., Walker, S., Goriely, A., Smith, R.,  
1456 Hay, A. (2016). Morphomechanical Innovation Drives Explosive Seed Dispersal. *Cell* 166,  
1457 222-33. doi: <http://dx.doi.org/10.1016/j.cell.2016.05.002>

- 1458  
1459 Hohm, T., Zitzler, E. and Simon, R. (2010). A dynamic model for stem cell homeostasis and  
1460 patterning in Arabidopsis meristems. *PLoS ONE* 5:e9189. doi:  
1461 <http://dx.doi.org/10.1371/journal.pone.0009189>  
1462
- 1463 Holeski, L.M., Hillstrom, M.L., Whitham, T.G. and Lindroth, R.L. (2012). Relative importance  
1464 of genetic, ontogenetic, induction, and seasonal variation in producing a multivariate  
1465 defense phenotype in a foundation tree species. *Oecologia* 170, 695-707. doi:  
1466 10.1007/s00442-012-2344-6  
1467
- 1468 Horn, H.S. (1971). *The adaptive geometry of trees* (Vol. 3). Princeton University Press.  
1469
- 1470 Huang, Y., Lechowicz, M.J., Zhou, D. and Price, C.A. (2016). Evaluating general allometric  
1471 models: interspecific and intraspecific data tell different stories due to interspecific  
1472 variation in stem tissue density and leaf size. *Oecologia* 180, 671-684. doi:  
1473 10.1007/s00442-015-3497-x  
1474
- 1475 Huber, D. (2011). The ASTM E57 file format for 3D imaging data exchange. In *IS&T/SPIE*  
1476 *Electronic Imaging* ( 78640A-78640A). International Society for Optics and Photonics.  
1477
- 1478 Huff, P.M., Wilf, P. and Azumah, E.J. (2003). Digital future for paleoclimate estimation from  
1479 fossil leaves? Preliminary results. *Palaios* 18, 266-274. doi: 10.1669/0883-  
1480 1351(2003)018<0266:DFFPEF>2.0.CO;2  
1481
- 1482 Ioio, R.D., Nakamura, K., Moubayidin, L., Perilli, S., Taniguchi, M., Morita, M.T., Aoyama, T.,  
1483 Costantino, P. and Sabatini, S. (2008). A genetic framework for the control of cell division  
1484 and differentiation in the root meristem. *Science* 322, 1380-1384. doi:  
1485 10.1126/science.1164147  
1486
- 1487 Iwata, H., Niikura, S., Matsuura, S., Takano, Y. and Ukai, Y. (1998). Evaluation of variation of  
1488 root shape of Japanese radish (*Raphanus sativus* L.) based on image analysis using elliptic  
1489 Fourier descriptors. *Euphytica* 102, 143-149. doi: 10.1023/A:1018392531226  
1490
- 1491 Jacobs, B.F. and Herendeen, P.S. (2004). Eocene dry climate and woodland vegetation in  
1492 tropical Africa reconstructed from fossil leaves from northern Tanzania. *Palaeogeogr.*  
1493 *Palaeoclimatol. Palaeoecol.* 213, 115-123. doi:  
1494 <http://dx.doi.org/10.1016/j.palaeo.2004.07.007>  
1495
- 1496 Jansen, R.C. and Nap, J.P. (2001). Genetical genomics: the added value from segregation.  
1497 *Trends Genet.* 17, 388-391. doi: [http://dx.doi.org/10.1016/S0168-9525\(01\)02310-1](http://dx.doi.org/10.1016/S0168-9525(01)02310-1)  
1498
- 1499 Jensen, O.E. and Fozard, J.A. (2015). Multiscale models in the biomechanics of plant growth.  
1500 *Physiology* 30, 159-166. doi: 10.1152/physiol.00030.2014  
1501

- 1502 Kaasalainen, S., Holopainen, M., Karjalainen, M., Vastaranta, M., Kankare, V., Karila, K. and  
1503 Osmanoglu, B. (2015). Combining lidar and synthetic aperture radar data to estimate forest  
1504 biomass: status and prospects. *Forests* 6, 252-270. doi:10.3390/f6010252  
1505
- 1506 Kaplan, D.R. (2001). The science of plant morphology: definition, history, and role in  
1507 modern biology. *Am. J. Bot.* 88, 1711-1741.  
1508
- 1509 Kaplan, D.R. and Hagemann, W. (1991). The relationship of cell and organism in vascular  
1510 plants. *BioScience* 41, 693-703. doi: 10.2307/1311764  
1511
- 1512 Kendall, D.G. (1984). Shape manifolds, procrustean metrics, and complex projective spaces.  
1513 *Bull. Lond. Math. Soc.* 16, 81-121. doi: 10.1112/blms/16.2.81  
1514
- 1515 Keurentjes, J.J., Fu, J., Terpstra, I.R., Garcia, J.M., van den Ackerveken, G., Snoek, L.B., Peeters,  
1516 A.J., Vreugdenhil, D., Koornneef, M. and Jansen, R.C. (2007). Regulatory network  
1517 construction in Arabidopsis by using genome-wide gene expression quantitative trait loci.  
1518 *Proc. Natl. Acad. Sci. U.S.A.* 104, 1708-1713. doi: 10.1073/pnas.0610429104  
1519
- 1520 Kimura, S., Koenig, D., Kang, J., Yoong, F.Y. and Sinha, N. (2008). Natural variation in leaf  
1521 morphology results from mutation of a novel KNOX gene. *Curr. Biol.* 18, 672-677. doi:  
1522 <http://dx.doi.org/10.1016/j.cub.2008.04.008>  
1523
- 1524 Kitazawa, M.S. and Fujimoto, K. (2015). A Dynamical Phyllotaxis Model to Determine Floral  
1525 Organ Number. *PLoS Comput. Biol.* 11: p.e1004145. doi:10.1371/journal.pcbi.1004145  
1526
- 1527 Koehl, M.A.R. (1977a). Effects of sea anemones on the flow forces they encounter. *J. Exp.*  
1528 *Biol.* 69, 87-105.  
1529
- 1530 Koehl, M.A.R. (1977b). Mechanical diversity of connective tissue of the body wall of sea  
1531 anemones. *J. Exp. Biol.* 69, 107-125.  
1532
- 1533 Koenig, D., Bayer, E., Kang, J., Kuhlemeier, C. and Sinha, N. (2009). Auxin patterns *Solanum*  
1534 *lycopersicum* leaf morphogenesis. *Development* 136, 2997-3006. doi: 10.1242/dev.033811  
1535
- 1536 Ku, L.X., Zhao, W.M., Zhang, J., Wu, L.C., Wang, C.L., Wang, P.A., Zhang, W.Q. and Chen, Y.H.  
1537 (2010). Quantitative trait loci mapping of leaf angle and leaf orientation value in maize (*Zea*  
1538 *mays* L.). *Theoret. Appl. Genet.* 121, 951-959. doi:10.1007/s00122-010-1364-z  
1539
- 1540 Kuchen, E.E., Fox, S., de Reuille, P.B., Kennaway, R., Bensmihen, S., Avondo, J., Calder, G.M.,  
1541 Southam, P., Robinson, S., Bangham, A. and Coen, E. (2012). Generation of leaf shape  
1542 through early patterns of growth and tissue polarity. *Science* 335, 1092-1096. doi:  
1543 10.1126/science.1214678  
1544
- 1545 Kuhl, F.P. and Giardina, C.R. (1982). Elliptic Fourier features of a closed contour. *Comput.*  
1546 *Graph. Image Process.* 18, 236-258. doi:10.1016/0146-664X(82)90034-X

- 1547  
1548 Kumi, F., Hanping, M., Jianping, H. and Ullah, I. (2015). Review of applying X-ray computed  
1549 tomography for imaging soil-root physical and biological processes. *Int. J. Agric. Biol. Eng.* 8,  
1550 1-14.  
1551  
1552 Kurth, W. (1994). *Growth grammar interpreter grogra 2.4-a software tool for the 3-*  
1553 *dimensional interpretation of stochastic, sensitive growth grammars in the context of plant*  
1554 *modelling*. Göttingen : Forschungszentrum Waldökosysteme der Universität Göttingen  
1555  
1556 Kvilekval, K., Fedorov, D., Obara, B., Singh, A. and Manjunath, B.S. (2010). Bisque: a  
1557 platform for bioimage analysis and management. *Bioinformatics* 26, 544-552. doi:  
1558 10.1093/bioinformatics/btp699  
1559  
1560 Laga, H., Kurtek, S., Srivastava, A. and Miklavcic, S. J. (2014). Landmark-free statistical  
1561 analysis of the shape of plant leaves. *J. Theoret. Biol.* 363, 41-52. doi:  
1562 <http://dx.doi.org/10.1016/j.jtbi.2014.07.036>  
1563  
1564 Langlade, N.B., Feng, X., Dransfield, T., Copsey, L., Hanna, A.I., Thébaud, C., Bangham, A.,  
1565 Hudson, A. and Coen, E. (2005). Evolution through genetically controlled allometry space.  
1566 *Proc. Natl. Acad. Sci. U.S.A.* 102, 10221-10226. doi: 10.1073/pnas.0504210102  
1567  
1568 Leiboff, S., Li, X., Hu, H.C., Todt, N., Yang, J., Li, X., Yu, X., Muehlbauer, G.J., Timmermans, M.C.,  
1569 Yu, J. and Schnable, P.S. (2015). Genetic control of morphometric diversity in the maize  
1570 shoot apical meristem. *Nat. Commun.* 6:8974. doi: 10.1038/ncomms9974  
1571  
1572 Liu, X., Shi, Y., Dinov, I., Mio, W. (2010). A computational model of multidimensional shape.  
1573 *Int J Comput Vis* 89, 69-83.  
1574  
1575 Lobet, G., Pagès, L., and Draye, X. (2011). A novel image-analysis toolbox enabling  
1576 quantitative analysis of root system architecture. *Plant physiol.*, 157, 29-39. doi: [http://dx.](http://dx.doi.org/10.1104/pp.111.179895)  
1577 [doi.org/10.1104/pp.111.179895](http://dx.doi.org/10.1104/pp.111.179895)  
1578  
1579 Lobet, G., Pound, M.P., Diener, J., Pradal, C., Draye, X., Godin, C., Javaux, M., Leitner, D.,  
1580 Meunier, F., Nacry, P. and Pridmore, T.P. (2015). Root system markup language: toward a  
1581 unified root architecture description language. *Plant Physiol.* 167, 617-627. doi:  
1582 10.1104/pp.114.253625  
1583  
1584 Long, C. A. (1994). Leonardo da Vinci's rule and fractal complexity in dichotomous trees. *J.*  
1585 *Theoret. Biol.* 167, 107-113. doi:10.1006/jtbi.1994.1056  
1586  
1587 Luongo, A. and Piccardo, G. (1998). Non-linear galloping of sagged cables in 1: 2 internal  
1588 resonance. *J. Sound Vibr.* 214, 915-940. doi:10.1006/jsvi.1998.1583  
1589  
1590 Lynch, J. P., & Brown, K. M. (2012). New roots for agriculture: exploiting the root phenome.  
1591 *Philos. Trans. R. Soc. B* 367, 1598-1604. doi: 10.1098/rstb.2011.0243

- 1592  
1593 Lynch, J.P. (2013). Steep, cheap and deep: an ideotype to optimize water and N acquisition  
1594 by maize root systems. *Ann. Bot.* 112, 347-357. doi: 10.1093/aob/mcs293  
1595  
1596 Lynch, J.P., Chimungu, J.G. and Brown, K.M. (2014). Root anatomical phenes associated with  
1597 water acquisition from drying soil: targets for crop improvement. *J. Exp. Bot.* 65, 6155-  
1598 6166. doi: 10.1093/jxb/eru162  
1599  
1600 Lynch, J.P. (2015). Root phenes that reduce the metabolic costs of soil exploration:  
1601 opportunities for 21st century agriculture. *Plant Cell Environ.* 38, 1775-1784. doi:  
1602 10.1111/pce.12451  
1603  
1604 MacPherson, R. and Schweinhart, B. (2012). Measuring shape with topology. *J. Math. Phys.*  
1605 53: 073516. doi: <http://dx.doi.org/10.1063/1.4737391>  
1606  
1607 Maizel, A., von Wangenheim, D., Federici, F., Haseloff, J. and Stelzer, E.H. (2011).  
1608 High-resolution live imaging of plant growth in near physiological bright conditions using  
1609 light sheet fluorescence microscopy. *Plant J.* 68, 377-385. doi: 10.1111/j.1365-  
1610 313X.2011.04692.x  
1611  
1612 Majewski, J. and Pastinen, T. (2011). The study of eQTL variations by RNA-seq: from SNPs  
1613 to phenotypes. *Trends Genet.* 27, 72-79. doi: <http://dx.doi.org/10.1016/j.tig.2010.10.006>  
1614  
1615 Martinez, C.C., Chitwood, D.H., Smith, R.S. and Sinha, N.R. (2016). Left-right leaf asymmetry  
1616 in decussate and distichous phyllotactic systems. *bioRxiv*, p.043869. doi:  
1617 <http://dx.doi.org/10.1101/043869>  
1618  
1619 May, R.M. (2004). Uses and abuses of mathematics in biology. *Science* 303, 790-793. Doi:  
1620 10.1126/science.1094442  
1621  
1622 Mayr, E. (1981). Biological classification: toward a synthesis of opposing methodologies.  
1623 *Science* 214, 510-516. doi: 10.1126/science.214.4520.510  
1624  
1625 Meijón, M., Satbhai, S.B., Tsuchimatsu, T. and Busch, W. (2014). Genome-wide association  
1626 study using cellular traits identifies a new regulator of root development in Arabidopsis.  
1627 *Nat. Genet.* 46, 77-81. doi: 10.1038/ng.2824  
1628  
1629 Meinhardt, H. and Gierer, A. (1974). Applications of a theory of biological pattern formation  
1630 based on lateral inhibition. *J. Cell Sci.* 15, 321-346.  
1631  
1632 Meinhardt, H. (1976). Morphogenesis of lines and nets. *Differentiation* 6, 117-123. doi:  
1633 10.1111/j.1432-0436.1976.tb01478.x  
1634

- 1635 Meinhardt, H. (2004). Out-of-phase oscillations and traveling waves with unusual  
1636 properties: the use of three-component systems in biology. *Physica D: Nonlinear*  
1637 *Phenomena* 199, 264-277. doi: <http://dx.doi.org/10.1016/j.physd.2004.08.018>  
1638
- 1639 Meyer, R.S. and Purugganan, M.D. (2013). Evolution of crop species: genetics of  
1640 domestication and diversification. *Nat. Rev. Genet.* 14, 840-852. doi:10.1038/nrg3605  
1641
- 1642 Miller, L.A. (2005). Structural dynamics and resonance in plants with nonlinear stiffness. *J.*  
1643 *Theoret. Biol.* 234, 511-524. doi: <http://dx.doi.org/10.1016/j.jtbi.2004.12.004>  
1644
- 1645 Miller, N.D., Parks, B.M. and Spalding, E.P. (2007). Computer-vision analysis of seedling  
1646 responses to light and gravity. *Plant J.* 52, 374-381. doi: 10.1111/j.1365-  
1647 313X.2007.03237.x  
1648
- 1649 Miller, L.A., Santhanakrishnan, A., Jones, S., Hamlet, C., Mertens, K. and Zhu, L. (2012).  
1650 Reconfiguration and the reduction of vortex-induced vibrations in broad leaves. *J. Exp. Biol.*  
1651 215, 2716-2727. doi: 10.1242/jeb.064501  
1652
- 1653 Milnor, J.W. (1963). *Morse theory*. Princeton: Princeton University Press.  
1654
- 1655 Mio, W., Srivastava, A. (2004). Elastic-string models for representation and analysis of  
1656 planar shapes. *CVPR, Proc of the IEEE Computer Society Conference 2*.  
1657
- 1658 Möller, B. and Weijers, D. (2009). Auxin control of embryo patterning. *CSH Perspect. Biol.* 1:  
1659 a001545. doi: 10.1101/cshperspect.a001545  
1660
- 1661 Monforte, A.J., Diaz, A.I., Caño-Delgado, A. and van der Knaap, E. (2014). The genetic basis of  
1662 fruit morphology in horticultural crops: lessons from tomato and melon. *J. Exp. Bot.* 65,  
1663 4625-4637. doi: 10.1093/jxb/eru017  
1664
- 1665 Moyle, L.C. (2008). Ecological and evolutionary genomics in the wild tomatoes (*Solanum*  
1666 *sect. Lycopersicon*). *Evolution* 62, 2995-3013. doi: 10.1111/j.1558-5646.2008.00487.x  
1667
- 1668 Nakielski, J. (2008). The tensor-based model for growth and cell divisions of the root apex.  
1669 I. The significance of principal directions. *Planta* 228, 179-189. doi:10.1007/s00425-008-  
1670 0728-y  
1671
- 1672 Nicotra, A.B., Atkin, O.K., Bonser, S.P., Davidson, A.M., Finnegan, E.J., Mathesius, U., Poot, P.,  
1673 Purugganan, M.D., Richards, C.L., Valladares, F. and van Kleunen, M. (2010). Plant  
1674 phenotypic plasticity in a changing climate. *Trends Plant Sci.* 15, 684-692. doi:  
1675 <http://dx.doi.org/10.1016/j.tplants.2010.09.008>  
1676
- 1677 Nicotra, A.B., Leigh, A., Boyce, C.K., Jones, C.S., Niklas, K.J., Royer, D.L. and Tsukaya, H.  
1678 (2011). The evolution and functional significance of leaf shape in the angiosperms. *Funct.*  
1679 *Plant Biol.* 38, 535-552. doi: <http://dx.doi.org/10.1071/FP11057>

- 1680  
1681 Nielsen, K. L., Lynch, J. P., Jablondow, A. G. and Curtis, P. S. (1994). Carbon cost of root  
1682 systems: an architectural approach. In *Belowground Responses to Rising Atmospheric CO<sub>2</sub>:  
1683 Implications for Plants, Soil Biota, and Ecosystem Processes* (pp. 161-169). Springer  
1684 Netherlands.  
1685  
1686 Niklas, K.J. (1992). *Plant biomechanics: an engineering approach to plant form and function*.  
1687 Chicago: University of Chicago Press.  
1688  
1689 Niklas, K.J. (1994). *Plant allometry: the scaling of form and process*. Chicago: University of  
1690 Chicago Press.  
1691  
1692 Niklas, K.J. (1997). *The evolutionary biology of plants*. Chicago: University of Chicago Press.  
1693  
1694 Noble, W.S. (2009). A quick guide to organizing computational biology projects. *PLoS*  
1695 *Comput. Biol.* 5: e1000424. doi:10.1371/journal.pcbi.1000424  
1696  
1697 Nordborg, M. and Weigel, D. (2008). Next-generation genetics in plants. *Nature* 456, 720-  
1698 723. doi:10.1038/nature07629  
1699  
1700 Oleana, A., (2014). New School: Graduate programs at the interface of quantitative and  
1701 biological sciences set the stage for more interdisciplinary collaboration. *New Scientist*.  
1702  
1703 Oppelt, A. L., Kurth, W., & Godbold, D. L. (2001). Topology, scaling relations and Leonardo's  
1704 rule in root systems from African tree species. *Tree Physiol.* 21, 117-128. doi:  
1705 10.1093/treephys/21.2-3.117  
1706  
1707 Oreopoulos, J., Berman, R. and Browne, M. (2013). Spinning-disk confocal microscopy:  
1708 present technology and future trends. *Methods Cell Biol.* 123, 153-175. doi: 10.1016/B978-  
1709 0-12-420138-5.00009-4  
1710  
1711 Pagnussat, G.C., Alandete-Saez, M., Bowman, J.L. and Sundaresan, V. (2009). Auxin-  
1712 dependent patterning and gamete specification in the Arabidopsis female gametophyte.  
1713 *Science* 324, 1684-1689. doi: 10.1126/science.1167324  
1714  
1715 Palubicki, W., Horel, K., Longay, S., Runions, A., Lane, B., Měch, R., & Prusinkiewicz, P.  
1716 (2009). Self-organizing tree models for image synthesis. *ACM Transactions on Graphics*  
1717 *(TOG)*, 28(3), 58.  
1718  
1719 Palubicki, W. (2013). A Computational Study of Tree Architecture (Doctoral dissertation,  
1720 University of Calgary).  
1721  
1722 Paran, I. and van der Knaap, E. (2007). Genetic and molecular regulation of fruit and plant  
1723 domestication traits in tomato and pepper. *J. Exp. Bot.* 58, 3841-3852. doi:  
1724 10.1093/jxb/erm257



- 1725  
1726 Parkhurst, D.F. and Loucks, O.L. (1972). Optimal leaf size in relation to environment. *J. Ecol.*  
1727 60, 505-537. doi: 10.2307/2258359  
1728  
1729 Paul, K.I., Roxburgh, S.H., Chave, J., England, J.R., Zerihun, A., Specht, A., Lewis, T., Bennett,  
1730 L.T., Baker, T.G., Adams, M.A. and Huxtable, D. (2015). Testing the generality of  
1731 above-ground biomass allometry across plant functional types at the continent scale. *Glob.*  
1732 *Chang. Biol.* 22, 2106–2124. doi: 10.1111/gcb.13201  
1733  
1734 Pearson, J.E. (1993). Complex patterns in a simple system. *Science* 261, 189-192. doi:  
1735 10.1126/science.261.5118.189  
1736  
1737 Peaucelle, A., Braybrook, S.A., Le Guillou, L., Bron, E., Kuhlemeier, C. and Höfte, H. (2011).  
1738 Pectin-induced changes in cell wall mechanics underlie organ initiation in Arabidopsis.  
1739 *Curr. Biol.* 21, 1720-1726. doi: <http://dx.doi.org/10.1016/j.cub.2011.08.057>  
1740  
1741 Peppe, D.J., Royer, D.L., Cariglino, B., Oliver, S.Y., Newman, S., Leight, E., Enikolopov, G.,  
1742 Fernandez-Burgos, M., Herrera, F., Adams, J.M. and Correa, E. (2011). Sensitivity of leaf size  
1743 and shape to climate: global patterns and paleoclimatic applications. *New Phytol.* 190, 724-  
1744 739. doi: 10.1111/j.1469-8137.2010.03615.x  
1745  
1746 Postma, J.A. and Lynch, J.P. (2011). Root cortical aerenchyma enhances the growth of maize  
1747 on soils with suboptimal availability of nitrogen, phosphorus, and potassium. *Plant Physiol.*  
1748 156, 1190-1201. doi: 10.1104/pp.111.175489  
1749  
1750 Pradal, C., Dufour-Kowalski, S., Boudon, F., Fournier, C. and Godin, C. (2008). OpenAlea: a  
1751 visual programming and component-based software platform for plant modelling. *Funct.*  
1752 *Plant Biol.* 35, 751-760. doi: <http://dx.doi.org/10.1071/FP08084>  
1753  
1754 Prather, L.A., Alvarez-Fuentes, O., Mayfield, M.H. and Ferguson, C.J. (2004). The decline of  
1755 plant collecting in the United States: a threat to the infrastructure of biodiversity studies.  
1756 *Syst. Bot.* 29, 15-28. doi: <http://dx.doi.org/10.1600/036364404772974185>  
1757  
1758 Prusinkiewicz, P., Mündermann, L., Karwowski, R. and Lane, B. (2001). The use of positional  
1759 information in the modeling of plants. In *Proceedings of the 28th annual conference on*  
1760 *Computer graphics and interactive techniques* ( 289-300). ACM.  
1761  
1762 Prusinkiewicz, P. (2004). “Self-similarity in plants: Integrating mathematical and biological  
1763 perspectives”, in *Thinking in Patterns: Fractals and Related Phenomena in Nature*, ed. M.  
1764 Novak (Singapore: World Scientific), 103-118.  
1765  
1766 Prusinkiewicz, P. and de Reuille, P.B. (2010). Constraints of space in plant development. *J.*  
1767 *Exp. Bot.* 61, 2117-2129. doi: 10.1093/jxb/erq081  
1768

- 1769 Prusinkiewicz, P. and Lindenmayer, A. (2012). *The algorithmic beauty of plants*. New York:  
1770 Springer Science & Business Media.  
1771
- 1772 Ranjan, A., Budke, J., Rowland, S.D., Chitwood, D.H., Kumar, R., Carriedo, L.G., Ichihashi, Y.,  
1773 Zumstein, K., Maloof, J.N., Sinha, N. (2016). eQTL regulating transcript levels associated  
1774 with diverse biological processes in tomato. *Plant Physiol.* 172, 328-40. doi:  
1775 <http://59.163.192.83:8080/jspui/handle/123456789/666>  
1776
- 1777 Raumonon, P., Kaasalainen, M., Åkerblom, M., Kaasalainen, S., Kaartinen, H., Vastaranta, M.,  
1778 Holopainen, M., Disney, M. and Lewis, P. (2013). Fast automatic precision tree models from  
1779 terrestrial laser scanner data. *Remote Sens.* 5, 491-520. doi:10.3390/rs5020491  
1780
- 1781 Razak, K. A., Bucksch, A., Damen, M., van Westen, C., Straatsma, M., & de Jong, S. (2013).  
1782 Characterizing tree growth anomaly induced by landslides using LiDAR. In *Landslide*  
1783 *Science and Practice* (pp. 235-241). Springer Berlin Heidelberg.  
1784
- 1785 Reinhardt, D., Pesce, E.R., Stieger, P., Mandel, T., Baltensperger, K., Bennett, M., Traas, J.,  
1786 Friml, J. and Kuhlemeier, C. (2003). Regulation of phyllotaxis by polar auxin transport.  
1787 *Nature* 426, 255-260. doi:10.1038/nature02081  
1788
- 1789 Rellán-Álvarez, R., Lobet, G., Lindner, H., Pradier, P.L., Sebastian, J., Yee, M.C., Geng, Y.,  
1790 Trontin, C., LaRue, T., Schragger-Lavelle, A. and Haney, C.H. (2015). GLO-Roots: an imaging  
1791 platform enabling multidimensional characterization of soil-grown root systems. *Elife* 4:  
1792 e07597. doi: <http://dx.doi.org/10.7554/eLife.07597>  
1793
- 1794 Rellan-Alvarez, R., Lobet, G. and Dinneny, J.R. (2016). Environmental Control of Root  
1795 System Biology. *Annu. Rev. Plant Biol.* 67, 619-642. doi: 10.1146/annurev-arplant-043015-  
1796 111848  
1797
- 1798 Remmler, L. and Rolland-Lagan, A.G. (2012). Computational method for quantifying growth  
1799 patterns at the adaxial leaf surface in three dimensions. *Plant Physiol.* 159, 27-39. doi:  
1800 10.1104/pp.112.194662  
1801
- 1802 Reuter, M., Biasotti, S., Giorgi, D., Patanè, G. and Spagnuolo, M. (2009). Discrete Laplace-  
1803 Beltrami operators for shape analysis and segmentation. *Comput. Graph.* 33, 381-390. doi:  
1804 <http://dx.doi.org/10.1016/j.cag.2009.03.005>  
1805
- 1806 Robbins, N.E. and Dinneny, J.R. (2015). The divining root: moisture-driven responses of  
1807 roots at the micro-and macro-scale. *J. Exp. Bot.* 66, 2145-2154. doi: doi:  
1808 10.1093/jxb/eru496  
1809
- 1810 Roden, J.S. (2003). Modeling the light interception and carbon gain of individual fluttering  
1811 aspen (*Populus tremuloides* Michx) leaves. *Trees* 17, 117-126. doi:10.1007/s00468-002-  
1812 0213-3  
1813

- 1814 Roden, J.S. and Pearcy, R.W. (1993). Effect of leaf flutter on the light environment of  
1815 poplars. *Oecologia* 93, 201-207. doi: 10.1007/BF00317672  
1816
- 1817 Rolland-Lagan, A.G., Bangham, J.A. and Coen, E. (2003). Growth dynamics underlying petal  
1818 shape and asymmetry. *Nature* 422, 161-163. doi:10.1038/nature01443  
1819
- 1820 Ron, M., Dorrity, M.W., de Lucas, M., Toal, T., Hernandez, R.I., Little, S.A., Maloof, J.N.,  
1821 Kliebenstein, D.J. and Brady, S.M. (2013). Identification of novel loci regulating interspecific  
1822 variation in root morphology and cellular development in tomato. *Plant Physiol.* 162, 755-  
1823 768. doi: 10.1104/pp.113.217802  
1824
- 1825 Royer, D.L., Wilf, P., Janesko, D.A., Kowalski, E.A. and Dilcher, D.L. (2005). Correlations of  
1826 climate and plant ecology to leaf size and shape: potential proxies for the fossil record. *Am.*  
1827 *J. Bot.* 92, 1141-1151. doi: 10.3732/ajb.92.7.1141  
1828
- 1829 Royer, D.L., Meyerson, L.A., Robertson, K.M. and Adams, J.M. (2009). Phenotypic plasticity of  
1830 leaf shape along a temperature gradient in *Acer rubrum*. *PLoS ONE* 4: e7653.  
1831 doi:10.1371/journal.pone.0007653  
1832
- 1833 Runions, A., Lane, B., and Prusinkiewicz, P. (2007). "Modeling Trees with a Space  
1834 Colonization Algorithm." *NPH*, 63-70.  
1835
- 1836 Ryan, D. (2013). The Global Plants Initiative celebrates its achievements and plans for the  
1837 future. *Taxon* 62, 417-418. doi: <http://dx.doi.org/10.12705/622.26>  
1838
- 1839 Sachs, J. (1878). Über die anordnung der zellen in jüngsten pflanzentheilen. *Arb. bot. Inst.*  
1840 *Wurzburg* 2, 46-104.  
1841
- 1842 Scarpella, E., Marcos, D., Friml, J. and Berleth, T. (2006). Control of leaf vascular patterning  
1843 by polar auxin transport. *Genes Dev.* 20, 1015-1027. doi:10.1101/gad.1402406  
1844
- 1845 Schatz, G.E. (2002). Taxonomy and herbaria in service of plant conservation: lessons from  
1846 Madagascar's endemic families. *Ann. Mo. Bot. Gard.* 89, 152145-152152.  
1847
- 1848 Schilling, A., Schmid, A. and Maas, H.-G. (2012). Tree Topology Representation from TLS  
1849 Point Clouds Using Depth-First Search in Voxel Space. *Photogramm. Eng. Remote Sens.* 78,  
1850 383-392. <http://dx.doi.org/10.14358/PERS.78.4.383>  
1851
- 1852 Schmitt, J., Stinchcombe, J.R., Heschel, M.S. and Huber, H. (2003). The adaptive evolution of  
1853 plasticity: phytochrome-mediated shade avoidance responses. *Integr. Comp. Biol.* 43, 459-  
1854 469. doi: 10.1093/icb/43.3.459  
1855
- 1856 Schreuder, M.D., Brewer, C.A. and Heine, C. (2001). Modelled influences of non-exchanging  
1857 trichomes on leaf boundary layers and gas exchange. *J. Theoret. Biol.* 210, 23-32.  
1858 doi:10.1006/jtbi.2001.2285

- 1859  
1860 Schuepp, P.H. (1972). Studies of forced-convection heat and mass transfer of fluttering  
1861 realistic leaf models. *Boundary-Layer Meteorol.* 2, 263-274. doi:10.1007/BF02184768  
1862  
1863 Schuepp, P.H. (1993). Leaf boundary layers. *New Phytol.* 125, 477-507. doi: 10.1111/j.1469-  
1864 8137.1993.tb03898.x  
1865  
1866 Seidel, D., Schall, P., Gille, M. and Ammer, C. (2015). Relationship between tree growth and  
1867 physical dimensions of *Fagus sylvatica* crowns assessed from terrestrial laser scanning.  
1868 *iForest.* 8, 735-742. doi: 10.3832/ifer1566-008  
1869  
1870 Sena, G., Frentz, Z., Birnbaum, K.D. and Leibler, S. (2011). Quantitation of cellular dynamics  
1871 in growing *Arabidopsis* roots with light sheet microscopy. *PLoS ONE* 6: e21303.  
1872 doi:10.1371/journal.pone.0021303  
1873  
1874 Sharp, R.E., Silk, W.K. and Hsiao, T.C. (1988). Growth of the maize primary root at low water  
1875 potentials I. Spatial distribution of expansive growth. *Plant Physiol.* 87, 50-57. doi: [http://](http://dx.doi.org/10.1104/pp.87.1.50)  
1876 [dx.doi.org/10.1104/pp.87.1.50](http://dx.doi.org/10.1104/pp.87.1.50)  
1877  
1878 Sharp, R.E., Hsiao, T.C. and Silk, W.K. (1990). Growth of the maize primary root at low water  
1879 potentials II. Role of growth and deposition of hexose and potassium in osmotic  
1880 adjustment. *Plant Physiol.* 93, 1337-1346. doi: <http://dx.doi.org/10.1104/pp.93.4.1337>  
1881  
1882 Silk, W.K. and Erickson, R.O. (1979). Kinematics of plant growth. *J. Theoret. Biol.* 76, 481-  
1883 501. doi:10.1016/0022-5193(79)90014-6  
1884  
1885 Silk, W.K. (1984). Quantitative descriptions of development. *Annu. Rev. Plant Physiol.* 35,  
1886 479-518. doi: 10.1146/annurev.pp.35.060184.002403  
1887  
1888 Slovak, R., Göschl, C., Su, X., Shimotani, K., Shiina, T. and Busch, W. (2014). A scalable open-  
1889 source pipeline for large-scale root phenotyping of *Arabidopsis*. *Plant Cell* 26, 2390-2403.  
1890 doi: 10.1105/tpc.114.124032  
1891  
1892 Smith, G.F., Steenkamp, Y., Klopper, R.R., Siebert, S.J. and Arnold, T.H. (2003). The price of  
1893 collecting life. *Nature* 422, 375-376. doi:10.1038/422375a  
1894  
1895 Smith, R.S., Guyomarc'h, S., Mandel, T., Reinhardt, D., Kuhlemeier, C. and Prusinkiewicz, P.  
1896 (2006). A plausible model of phyllotaxis. *Proc. Natl. Acad. Sci. U.S.A.* 103, 1301-1306. doi:  
1897 10.1073/pnas.0510457103  
1898  
1899 Smith, R.S. and Bayer, E.M. (2009). Auxin transport-feedback models of patterning in  
1900 plants. *Plant Cell Environ.* 32, 1258-1271. doi: 10.1111/j.1365-3040.2009.01997.x  
1901  
1902 Smith, G.E. (2010). Nobel Lecture: The invention and early history of the CCD. *Rev. Mod.*  
1903 *Phys.* 82: 2307. doi: <http://dx.doi.org/10.1103/RevModPhys.82.2307>

- 1904  
1905 Spalding, E.P. and Miller, N.D. (2013). Image analysis is driving a renaissance in growth  
1906 measurement. *Curr. Opin. Plant Biol.* 16, 100-104. doi:  
1907 <http://dx.doi.org/10.1016/j.pbi.2013.01.001>  
1908  
1909 Spicer, R.A., Valdes, P.J., Spicer, T.E.V., Craggs, H.J., Srivastava, G., Mehrotra, R.C. and Yang, J.  
1910 (2009). New developments in CLAMP: calibration using global gridded meteorological data.  
1911 *Palaeogeogr. Palaeoclimatol. Palaeoecol.* 283, 91-98. doi:  
1912 <http://dx.doi.org/10.1016/j.palaeo.2009.09.009>  
1913  
1914 Steeves, T.A. and Sussex, I.M. (1989). *Patterns in plant development*. New York: Cambridge  
1915 University Press.  
1916  
1917 Sudret, B. (2008). Global sensitivity analysis using polynomial chaos expansions. *Reliab.*  
1918 *Eng. Syst. Saf.* 93, 964-979. doi: <http://dx.doi.org/10.1016/j.ress.2007.04.002>  
1919  
1920 Symonova, O., Topp, C. N., & Edelsbrunner, H. (2015). DynamicRoots: a software platform  
1921 for the reconstruction and analysis of growing plant roots. *PLoS ONE*, 10: e0127657.  
1922 doi:10.1371/journal.pone.0127657  
1923  
1924 Szymanowska-Pułka, J. and Nakielski, J. (2010). The tensor-based model for growth and  
1925 cell divisions of the root apex. II. Lateral root formation. *Planta* 232, 1207-1218.  
1926 doi:10.1007/s00425-010-1239-1  
1927  
1928 Szymanowska-Pułka, J., Potocka, I., Karczewski, J., Jiang, K., Nakielski, J. and Feldman, L.J.  
1929 (2012). Principal growth directions in development of the lateral root in *Arabidopsis*  
1930 *thaliana*. *Ann. Bot.* 110, 491-501. doi: 10.1093/aob/mcs129  
1931  
1932 Tauriello, G., Meyer, H.M., Smith, R.S., Koumoutsakos, P. and Roeder, A.H. (2015). Variability  
1933 and constancy in cellular growth of *Arabidopsis* sepals. *Plant Physiol.* 169, 2342-2358. doi:  
1934 <http://dx.doi.org/10.1104/pp.15.00839>  
1935  
1936 Thom, A.S. (1968). The exchange of momentum, mass, and heat between an artificial leaf  
1937 and the airflow in a wind-tunnel. *Q. J. R. Meteorol. Soc.* 94, 44-55. doi:  
1938 10.1002/qj.49709439906  
1939  
1940 Thompson, A.M., Yu, J., Timmermans, M.C., Schnable, P., Crants, J.C., Scanlon, M.J. and  
1941 Muehlbauer, G.J. (2015). Diversity of maize shoot apical meristem architecture and its  
1942 relationship to plant morphology. *G3. Genes Genomes Genet.* 5, 819-827. doi:  
1943 10.1534/g3.115.017541  
1944  
1945 Tian, F., Bradbury, P.J., Brown, P.J., Hung, H., Sun, Q., Flint-Garcia, S., Rocheford, T.R.,  
1946 McMullen, M.D., Holland, J.B. and Buckler, E.S. (2011). Genome-wide association study of  
1947 leaf architecture in the maize nested association mapping population. *Nat. Genet.* 43, 159-  
1948 162. doi:10.1038/ng.746

- 1949  
1950 Tisné, S., Reymond, M., Vile, D., Fabre, J., Dauzat, M., Koornneef, M. and Granier, C. (2008).  
1951 Combined genetic and modeling approaches reveal that epidermal cell area and number in  
1952 leaves are controlled by leaf and plant developmental processes in Arabidopsis. *Plant*  
1953 *Physiol.* 148, 1117-1127. doi: <http://dx.doi.org/10.1104/pp.108.124271>  
1954  
1955 Tomita, S., Kawase, M., Shinohara, H. and Fuchigami, T. (1988). Suppression of galloping  
1956 oscillation for a self-supporting optical fiber cable. *J. Lightwave Technol.* 6, 186-190.  
1957  
1958 Topp, C.N., Iyer-Pascuzzi, A.S., Anderson, J.T., Lee, C.R., Zurek, P.R., Symonova, O., Zheng, Y.,  
1959 Bucksch, A., Mileyko, Y., Galkovskyi, T. and Moore, B.T. (2013). 3D phenotyping and  
1960 quantitative trait locus mapping identify core regions of the rice genome controlling root  
1961 architecture. *Proc. Natl. Acad. Sci. U.S.A.* 110, E1695-E1704. doi: 10.1073/pnas.1304354110  
1962  
1963 Truong, S.K., McCormick, R.F., Rooney, W.L. and Mullet, J.E. (2015). Harnessing genetic  
1964 variation in leaf angle to increase productivity of *Sorghum bicolor*. *Genetics* 201, 1229-1238.  
1965 doi: [10.1534/genetics.115.178608](https://doi.org/10.1534/genetics.115.178608)  
1966  
1967 Turing, A.M. (1952). The chemical basis of morphogenesis. *Philos. Trans. R. Soc. B* 237, 37-  
1968 72.  
1969  
1970 Turing, A. M. (1992). In [*Collected works*]; *Collected works of AM Turing.[3]. Morphogenesis.*  
1971 Saunders, P.T. ed., North-Holland.  
1972  
1973 Uga, Y., Sugimoto, K., Ogawa, S., Rane, J., Ishitani, M., Hara, N., Kitomi, Y., Inukai, Y., Ono, K.,  
1974 Kanno, N. and Inoue, H. (2013). Control of root system architecture by DEEPER ROOTING 1  
1975 increases rice yield under drought conditions. *Nat. Genet.* 45, 1097-1102.  
1976 doi:10.1038/ng.2725  
1977  
1978 Valladares, F. (1999). "Architecture, ecology and evolution of plant crowns" in *Handbook of*  
1979 *functional plant ecology*, ed. F. Pugnaire, F. Valladares (New York: Marcel Dekker, Inc.), 121-  
1980 194.  
1981  
1982 van Dusschoten, D., Metzner, R., Kochs, J., Postma, J.A., Pflugfelder, D., Buehler, J., Schurr, U.  
1983 and Jahnke, S. (2016). Quantitative 3D Analysis of Plant Roots growing in Soil using  
1984 Magnetic Resonance Imaging. *Plant Physiol.* pp.01388.2015. doi:10.1104/pp.15.01388  
1985  
1986 Via, S. and Lande, R. (1985). Genotype-environment interaction and the evolution of  
1987 phenotypic plasticity. *Evolution* 39, 522505-522522.  
1988  
1989 Vlad, D., Kierzkowski, D., Rast, M.I., Vuolo, F., Ioio, R.D., Galinha, C., Gan, X., Hajheidari, M.,  
1990 Hay, A., Smith, R.S. and Huijser, P. (2014). Leaf shape evolution through duplication,  
1991 regulatory diversification, and loss of a homeobox gene. *Science* 343, 780-783. doi:  
1992 [10.1126/science.1248384](https://doi.org/10.1126/science.1248384)  
1993

- 1994 Vogel, S. (1970). Convective cooling at low airspeeds and the shapes of broad leaves. *J. Exp.*  
1995 *Bot.* 21, 91-101. doi: 10.1093/jxb/21.1.91  
1996
- 1997 Vogel, S. (1984). Drag and flexibility in sessile organisms. *Am. Zool.* 24, 37-44. doi:  
1998 <http://dx.doi.org/10.1093/icb/24.1.37>  
1999
- 2000 Vogel, S. (1989). Drag and reconfiguration of broad leaves in high winds. *J. Exp. Bot.* 40,  
2001 941-948. doi: 10.1093/jxb/40.8.941  
2002
- 2003 Vogel, S. (1992). Twist-to-bend ratios and cross-sectional shapes of petioles and stems. *J.*  
2004 *Exp. Bot.* 43, 1527-1532. doi: 10.1093/jxb/43.11.1527  
2005
- 2006 Vogel, S. (1994). *Life in moving fluids: the physical biology of flow*. Princeton: Princeton  
2007 University Press.  
2008
- 2009 Vogel, S. (2006). Drag reduction by leaf aquaplaning in *Hexastylis* (Aristolochiaceae) and  
2010 other plant species in floods. *J. North Am. Benthological Soc.* 25, 2-8.  
2011
- 2012 Vogel, S. (2009). Leaves in the lowest and highest winds: temperature, force and shape.  
2013 *New Phytol.* 183, 13-26. doi: 10.1111/j.1469-8137.2009.02854.x  
2014
- 2015 Vogel, S. (2012). *The life of a leaf*. Chicago: The University of Chicago Press.  
2016
- 2017 Volkov, A.G. (2000). Green plants: electrochemical interfaces. *J. Electroanal. Chem.* 483, 150-  
2018 156. doi: [http://dx.doi.org/10.1016/S0022-0728\(99\)00497-0](http://dx.doi.org/10.1016/S0022-0728(99)00497-0)  
2019
- 2020 Volkov, A.G. ed. (2006). *Plant Electrophysiology*. Berlin: Springer.  
2021
- 2022 Volkov, A.G., Foster, J.C., Ashby, T.A., Walker, R.K., Johnson, J.A. and Markin, V.S. (2010).  
2023 *Mimosa pudica*: Electrical and mechanical stimulation of plant movements. *Plant Cell*  
2024 *Environ.* 33, 163-173. doi: 10.1111/j.1365-3040.2009.02066.x  
2025
- 2026 von Nägeli, C.W. (1863). *Beiträge zur wissenschaftlichen Botanik*. Leipzig: Verlag von  
2027 Wilhelm Engelmann.  
2028
- 2029 von Wangenheim, D., Fangerau, J., Schmitz, A., Smith, R.S., Leitte, H., Stelzer, E.H. and Maizel,  
2030 A. (2016). Rules and self-organizing properties of post-embryonic plant organ cell division  
2031 patterns. *Curr. Biol.* 26, 439-449. doi: <http://dx.doi.org/10.1016/j.cub.2015.12.047>  
2032
- 2033 Vosselman, G. and Maas, H.G. eds. (2010). *Airborne and terrestrial laser scanning*. Caithness:  
2034 Whittles Publishing.  
2035
- 2036 Waddington, C.H. (1953). Genetic assimilation of an acquired character. *Evolution* 7, 118-  
2037 126.  
2038

- 2039 Wickham, H. (2014). Tidy data. *J. Stat. Softw.* 59: 10.  
2040
- 2041 Wiens, J.J. (2000). "Coding morphological variation within species and higher taxa for  
2042 phylogenetic analysis" in *Phylogenetic Analysis of Morphological Data*, ed J.J. Wiens  
2043 (Washington, D.C.: Smithsonian Institution Press), 115-145.  
2044
- 2045 Wilf, P. (1997). When are leaves good thermometers? A new case for leaf margin analysis.  
2046 *Paleobiol.* 23, 373-390. doi: <http://dx.doi.org/10.1017/S0094837300019746>  
2047
- 2048 Wilf, P., Wing, S.L., Greenwood, D.R. and Greenwood, C.L. (1998). Using fossil leaves as  
2049 paleoprecipitation indicators: an Eocene example. *Geology* 26, 203-206. doi:  
2050 10.1130/0091-7613(1998)  
2051
- 2052 Wilf, P., Zhang, S., Chikkerur, S., Little, S.A., Wing, S.L., Serre, T. (2016). Computer vision  
2053 cracks the leaf code. *Proc. Natl. Acad. Sci. U.S.A.* 113, 3305-3310. doi:  
2054 10.1073/pnas.1524473113  
2055
- 2056 Wilson, J.F. ed. (2003). *Dynamics of offshore structures*. Hoboken: John Wiley & Sons, Inc.  
2057
- 2058 Wilson, G., Aruliah, D.A., Brown, C.T., Hong, N.P.C., Davis, M., Guy, R.T., Haddock, S.H., Huff,  
2059 K.D., Mitchell, I.M., Plumbley, M.D. and Waugh, B. (2014). Best practices for scientific  
2060 computing. *PLoS Biol.* 12: e1001745. doi:10.1371/journal.pbio.1001745  
2061
- 2062 Wing, S.L. and Greenwood, D.R. (1993). Fossils and fossil climate: the case for equable  
2063 continental interiors in the Eocene. *Philos. Trans. R. Soc. B* 341, 243-252. doi:  
2064 10.1098/rstb.1993.0109  
2065
- 2066 Wolfe, J.A. (1979). *Temperature parameters of humid to mesic forests of eastern Asia and*  
2067 *relation to forests of other regions of the northern hemisphere and Australasia* (No. 1106). US  
2068 Govt. Print. Off.  
2069
- 2070 Wolfe, J.A. (1993). *A method of obtaining climatic parameters from leaf assemblages* (No.  
2071 2040). USGPO; For sale by USGS Map Distribution,  
2072
- 2073 Woltereck, R. (1909). "Weitere experimentelle Untersuchungen über Artveränderung,  
2074 speziell über das Wesen quantitativer Artunterschiede bei Daphniden." ("Further  
2075 investigations of type variation, specifically concerning the nature of quantitative  
2076 differences between varieties of Daphnia." *Verhandlungen der Deutschen zoologischen*  
2077 *Gesellschaft* 19(1909): 110-73.  
2078
- 2079 Wright, I.J., Reich, P.B., Westoby, M., Ackerly, D.D., Baruch, Z., Bongers, F., Cavender-Bares, J.,  
2080 Chapin, T., Cornelissen, J.H., Diemer, M. and Flexas, J. (2004). The worldwide leaf economics  
2081 spectrum. *Nature* 428, 821-827. doi:10.1038/nature02403  
2082



- 2083 York, L.M., Nord, E.A. and Lynch, J.P. (2013). Integration of root phenes for soil resource  
2084 acquisition. *Front. Plant Sci.* 4: 355. doi: 10.3389/fpls.2013.00355  
2085  
2086 Yoshida, S., de Reuille, P.B., Lane, B., Bassel, G.W., Prusinkiewicz, P., Smith, R.S. and Weijers,  
2087 D. (2014). Genetic control of plant development by overriding a geometric division rule.  
2088 *Dev. Cell* 29, 75-87. doi: <http://dx.doi.org/10.1016/j.devcel.2014.02.002>  
2089  
2090 Zhang, J., Ku, L.X., Han, Z.P., Guo, S.L., Liu, H.J., Zhang, Z.Z., Cao, L.R., Cui, X.J. and Chen, Y.H.  
2091 (2014). The ZmCLA4 gene in the qLA4-1 QTL controls leaf angle in maize (*Zea mays* L.). *J.*  
2092 *Exp. Bot.* 65, 5063-5076. doi: 10.1093/jxb/eru271  
2093  
2094 Zeide, B. and Pfeifer, P. (1991). A method for estimation of fractal dimension of tree crowns.  
2095 *For. sci.* 37, 1253-1265.  
2096  
2097 Zhu, J., Kaeppler, S. M. and Lynch, J. P. (2005). Mapping of QTLs for lateral root branching  
2098 and length in maize (*Zea mays* L.) under differential phosphorus supply. *Theor. Appl. Genet.*  
2099 *111*, 688-695.  
2100  
2101 Zhu, J., Brown, K.M. and Lynch, J.P. (2010). Root cortical aerenchyma improves the drought  
2102 tolerance of maize (*Zea mays* L.). *Plant Cell Environ.* 33, 740-749. doi: 10.1111/j.1365-  
2103 3040.2009.02099.x  
2104  
2105 Zurek, P.R., Topp, C.N. and Benfey, P.N. (2015). Quantitative trait locus mapping reveals  
2106 regions of the maize genome controlling root system architecture. *Plant Physiol.* 167, 1487-  
2107 1496. doi: <http://dx.doi.org/10.1104/pp.114.251751>  
2108  
2109

## 2110 **Figure Legends**

2111  
2112 **Figure 1: Plant morphology from the perspective of biology. A)** Adapted from Kaplan  
2113 (2001). Plant morphology interfaces with all disciplines of plant biology—plant physiology,  
2114 plant genetics, plant systematics, and plant ecology—influenced by both developmental  
2115 and evolutionary forces. **B)** Artistic rendering of Goethe’s *Urpflanze* concept (Goethe, 1837;  
2116 Friedman and Diggle, 2011), demonstrating the importance of development in modulating  
2117 the plant form. Goethe viewed the iterative development of plants as a transformation of  
2118 lateral organ identities, from juvenile to adult leaves to reproductive structures. **C)**  
2119 Evolutionary and ecological effects also shape plant morphology. Alexander von  
2120 Humboldt’s distribution of plants across the elevations of Chimborazo (Ecuador)

2121 demonstrates the effects of evolution and environment on plant morphology (Black and  
2122 Black, 1839).

2123

2124 **Figure 2: Plant morphology from the perspective of mathematics. A)** The topological  
2125 complexity of plants requires a mathematical framework to describe plant morphology.  
2126 Shown is the top of a maize crown root 42 days after planting. Color represents root  
2127 diameter. Image provided by Jonathan Lynch and Johannes Postma (Pennsylvania State  
2128 University). **B)** Persistent homology deforms a given plant morphology using functions to  
2129 define self-similarity in a structure. In this example, a color map of geodesic distance  
2130 functions to the ground level of a tree (blue indicates smaller values near the proximal base  
2131 and red larger values at the distal tips) is recorded as **C)** an  $H_0$  barcode, in which “births”  
2132 and “deaths” of connected components as a function of the distance function are recorded.  
2133 Images provided by Mao Li (Danforth Plant Science Center).

2134

2135 **Figure 3: Imaging techniques to capture plant morphology. A)** Confocal sections of an  
2136 Arabidopsis root. The upper panel shows a new lateral root primordium at an early stage of  
2137 development (highlighted in yellow). At regular intervals new roots branch from the  
2138 primary root. The lower panel shows the primary root meristem and the stem cell niche  
2139 (highlighted in yellow) from which all cells derive. Scale bars: 100 $\mu$ m. Images provided by  
2140 Alexis Maizel (Heidelberg University). **B)** Computational tomographic (CT) x-ray sections  
2141 through a reconstructed maize ear (left and middle) and kernel (right). Images provided by  
2142 Chris Topp (Donald Danforth Plant Science Center). **C)** Laser ablation tomography (LAT)  
2143 image of a nodal root from a mature, field-grown maize plant, with color segmentation  
2144 showing definition of cortical cells, aerenchyma lacunae, and metaxylem vessels. Image  
2145 provided by Jennifer Yang (Penn State).

2146

2147 **Figure 4: Terrestrial laser scanning creates a point cloud reconstruction of a Finnish**  
2148 **forest. A)** Structure of a boreal forest site in Finland as seen with airborne (ALS) and  
2149 terrestrial (TLS) laser scanning point clouds. The red (ground) and green (above ground)  
2150 points are obtained from National Land Survey of Finland national ALS point clouds that

2151 cover hundreds of thousands of square kilometers with about 1 point per square meter  
2152 resolution. The blue and magenta point clouds are results of two individual TLS  
2153 measurements and have over 20 million points each within an area of about 500 square  
2154 meters. TLS point density varies with range but can be thousands of points per square  
2155 meter up to tens of meters away from the scanner position. **B)** An excerpt from a single TLS  
2156 point cloud (blue). The TLS point cloud is so dense that individual tree point clouds  
2157 (orange) and parts from them (yellow) can be selected for detailed analysis. **C)** A detail  
2158 from a single TLS point cloud. Individual branches (yellow) 20 meters above ground can be  
2159 inspected from the point cloud with centimeter level resolution to estimate their length  
2160 and thickness. Images provided by Eetu Puttonen (Finnish Geospatial Research Institute in  
2161 the National Land Survey of Finland). ALS data was obtained from the National Land  
2162 Survey of Finland Topographic Database, 08/2012 (National Land Survey of Finland open  
2163 data licence, version 1.0).

2164

2165 **Figure 5: The environmental basis of plant morphology.** Root system architecture of  
2166 *Arabidopsis Col-0* plants expressing ProUBQ10:LUC2o growing in **A)** control and **B)** water-  
2167 deficient conditions using the GLO-Roots system (Rellán-Álvarez et al., 2015). Images  
2168 provided by Ruben Rellán-Álvarez (Laboratorio Nacional de Genómica para la  
2169 Biodiversidad, CINVESTAV).

2170

2171 **Figure 6: Integration of tissue growth and reaction-diffusion models.** **A)** Vertex model  
2172 of cellular layers (Prusinjewicz and Lindenmayer, 2012).  $K$ ,  $l_w$  and  $l_0$  are the spring  
2173 constant, current length, and rest length for wall  $a$ .  $K_p$  is a constant and  $S_A$  is the size of cell  
2174  $A$ .  $\Delta t$  is time step. Shown is a simulation of cell network growth. **B)** Reaction diffusion  
2175 model of the shoot apical meristem for WUSCHEL and CLAVATA interactions (Fujita et al.,  
2176 2011).  $u$ =WUS,  $v$ =CLV,  $i$ =cell index,  $\Phi$  is a sigmoid function.  $E$ ,  $B$ ,  $A_s$ ,  $A_d$ ,  $C$ ,  $D$ ,  $u_m$ ,  $D_u$ ,  $D_v$  are  
2177 positive constants. Shown are the distributions of WUS and CLV levels within a dynamic  
2178 cell network. Images provided by Dorjsuren Battogtokh (Virginia Tech).

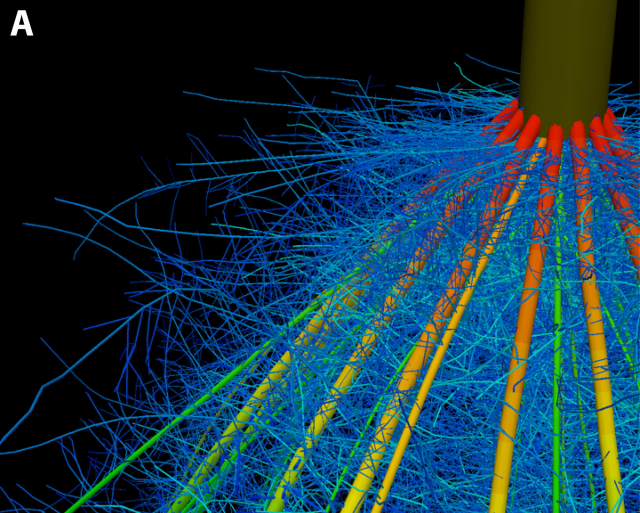
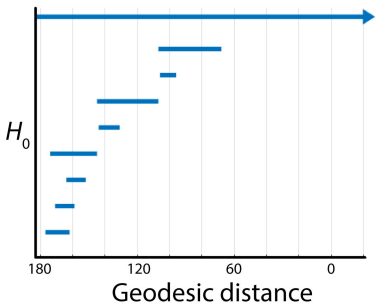
2179

2180 **Figure 7: Modeling the interaction between plant morphology and fluid dynamics. A)**  
2181 3D immersed boundary simulations of flow past a flexible rectangular sheet (left) and disk  
2182 with a cut from the center to edge (right). Both structures are attached to a flexible petiole,  
2183 and the flow is from left to right. The contours show the magnitude of vorticity (the  
2184 rotation in the air). The circular disk reconfigures into a cone shape, similar to many broad  
2185 leaves. **B)** Reconfiguration of tulip poplar leaves in 3 m/s (left) and 15 m/s flow (right). The  
2186 leaves typically flutter at lower wind speeds and reconfigure into stable cones at high wind  
2187 speeds. **C)** A cluster of redbud leaves in wind moving from right to left. The wind speed is  
2188 increased from 3 m/s (left) to 6 m/s (middle) and 12 m/s (right). Note that the entire  
2189 cluster reconfigures into a cone shape. This is different from the case of tulip poplars and  
2190 maples where each leaf individually reconfigures into a conic shape. Images provided by  
2191 Laura Miller (University of North Carolina, Chapel Hill).

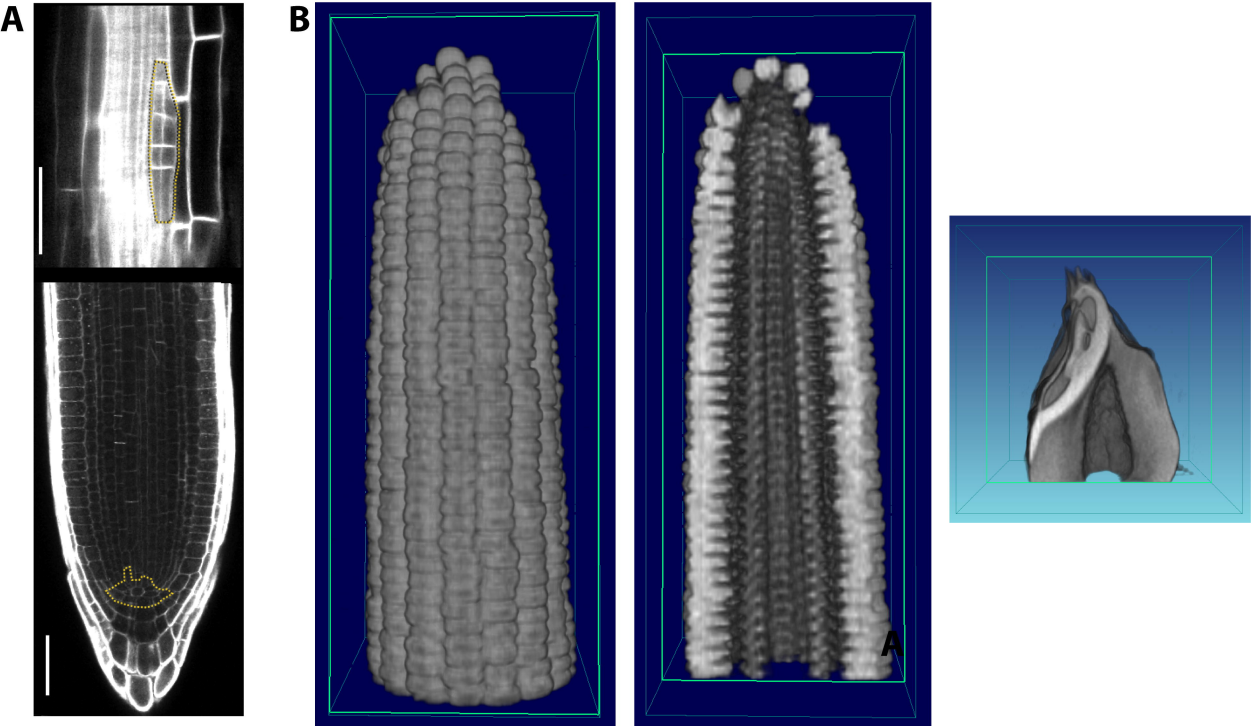
2192

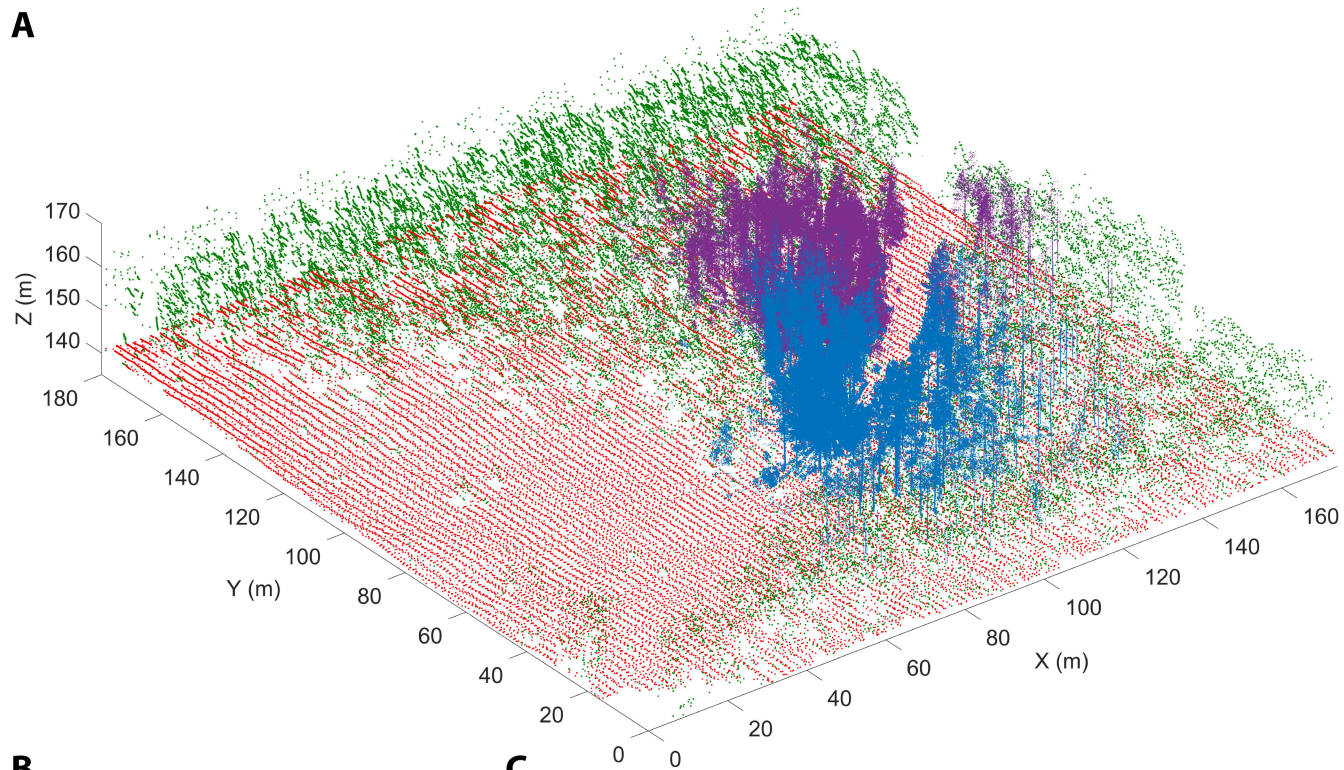
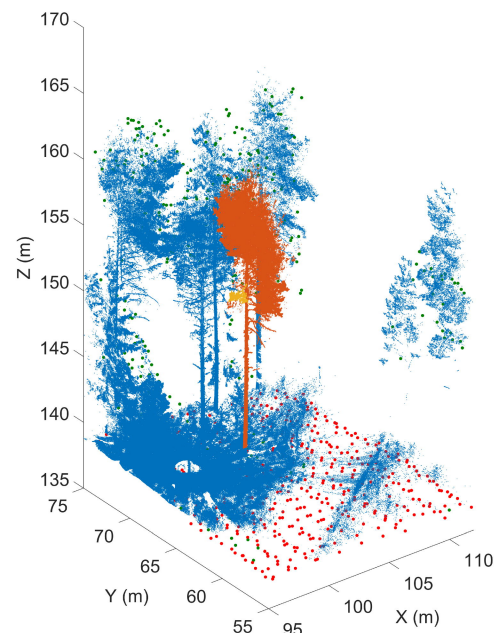
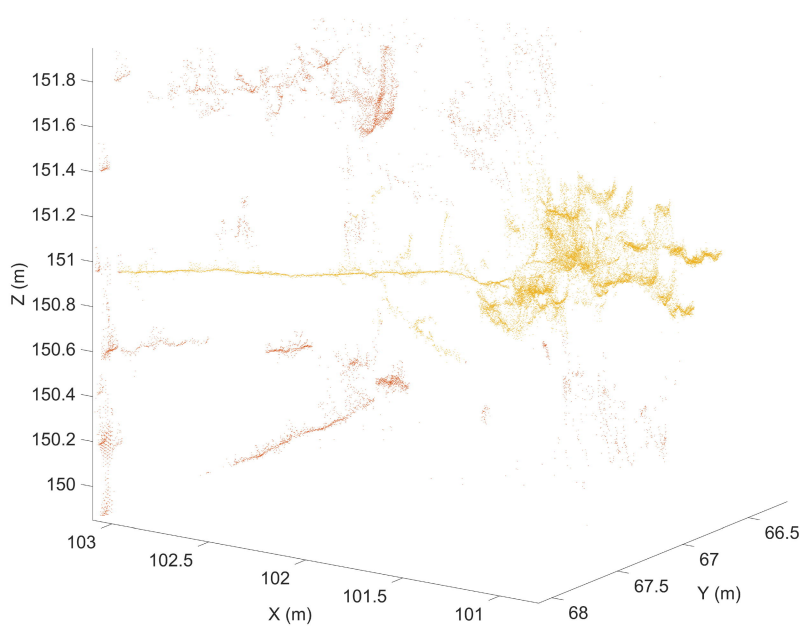
2193 **Figure 8: Milestones to accelerate the infusion of math into the plant sciences.** Group  
2194 photo of the authors from the National Institute for Mathematical and Biological Synthesis  
2195 (NIMBioS) meeting on plant morphological models (University of Tennessee, Knoxville,  
2196 September 2-4, 2015) that inspired this manuscript. Workshops such as these, bringing  
2197 mathematicians and plant biologists together, will be necessary to create a new synthesis  
2198 of plant morphology.



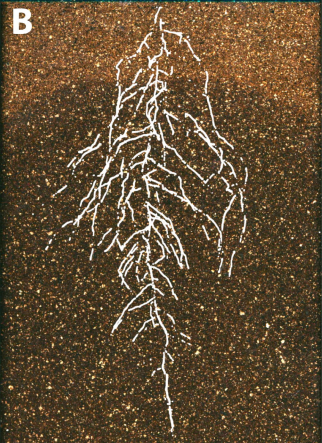
**A****B****C**





**A****B****C**





**A**Total force on a vertex  $i$ 

$$\vec{F}_i^T = \sum_{n \in \{a,b,c\}} \vec{F}_s^n + \frac{1}{2} \sum_{w \in \{a,b,c\}; m \in \{A,B,C\}} \vec{P}_w^m$$

Spring force on a wall  $a$ 

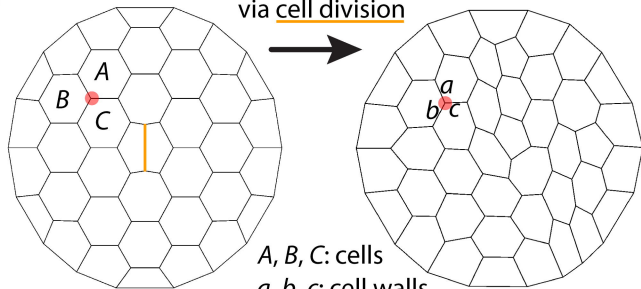
$$\vec{F}_s^a = -K(l_a - l_0)$$

Turgor pressure on  $a$  from  $A$ 

$$\vec{P}_A^a = \frac{K_P}{S_A}; \vec{l}_a \perp \vec{P}_A^a; \vec{l}_a \perp \vec{P}_B^a$$

Dynamics of vertex  $i$ 

$$\vec{x}_i(t + \Delta t) = \vec{x}_i(t) + \vec{F}_i^T \Delta t$$

Tissue growth  
via cell division

$A, B, C$ : cells  
 $a, b, c$ : cell walls  
 ● vertex:  $i$

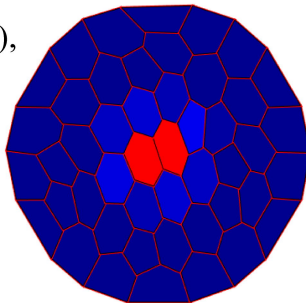
**B**

$$\frac{\partial u_i}{\partial t} = \Phi(E - B \cdot v_i + A_S \cdot u_i) - A_d \cdot u_i + D_u \sum_{j=\text{neighbors}} (u_j - u_i),$$

$$\frac{\partial v_i}{\partial t} = C \cdot u_i - D \cdot v_i + D_v \sum_{j=\text{neighbors}} (v_j - v_i),$$

$$\Phi(x) = \frac{A_d u_m}{2} \left( 1 + \frac{2x / (A_d u_m) - 1}{\sqrt[n]{1 + |2x / (A_d u_m) - 1|^n}} \right).$$

WUSCHEL



CLAVATA

