

Torque Penetrometric Test for the in-situ characterisation of historical mortars: fracture mechanics interpretation and experimental validation

Diego Marastoni ^a, Andrea Benedetti ^a, Luca Pelà ^{b*}, Giacomo Pignagnoli ^a

a) Department of Civil, Chemical, Environmental and Materials Engineering, University of Bologna, Viale Risorgimento 2, 40136 Bologna, Italy.

b) Department of Civil and Environmental Engineering, Universitat Politècnica de Catalunya (UPC-BarcelonaTech), Jordi Girona 1-3, 08034 Barcelona, Spain

* Corresponding author. Email: luca.pela@upc.edu

Abstract – *The assessment of historical structures requires appropriate knowledge of the behaviour of the investigated materials. Concerning masonry, its mechanical characterisation is a challenging task, since its composite nature requires the careful evaluation of the behaviour of its material components. In particular, the experimental assessment of the strength of existing mortar in historical structures still encounters several difficulties. This study investigates a novel Minor Destructive Testing (MDT) technique virtually equivalent to the vane test used for soils. The instrumentation, called herein Torque Penetrometric Test (TPT), is composed of a steel nail with four protruding teeth and a torque wrench. The test consists in inserting the toothed nail into a mortar joint and then applying a torque by means of a dynamometric key, until reaching the failure of the material. This work presents a novel interpretation theory based on basic concepts of fracture mechanics and applied to the micro-mechanical analysis of the stress state induced by the instrument on the investigated mortar. The proposed interpretative theory is validated through the execution of*

experimental tests in the laboratory and in a historical masonry building. The test proves to be effective for a quick in-situ MDT evaluation of the strength of existing mortars.

Keywords: Historical Construction; Masonry; Brickwork; Mortar; In-situ Testing; Minor Destructive Testing (MDT); Compressive Strength; Penetrometric Test; Fracture Mechanics; Fracture Energy.

Abbreviations -	DFJ: Double Flat Jack
	DPT: Double Punch Test
	DRMS: Drilling Resistance Measurement System
	MDT: Minor Destructive Testing
	NDT: Non Destructive Testing
	TPT: Torque Penetrometric Test

Highlights

- Novel torque penetrometer for the in-situ mechanical characterisation of mortar
- Toothed nail inserted into the mortar and twisted with a torque-meter until failure
- Proposal of an interpretation theory based on fracture mechanics
- Interpretation theory validated using new and available experimental campaigns
- In-situ applications prove the reliability of the instrument for historical mortars

1. Introduction

The structural assessment of historical buildings has become a fundamental topic in the conservation of the built cultural heritage, especially in the last decades where significant catastrophic events have threatened many important constructions [1,2]. Concerning monuments, the evaluation of the

structural health and the identification of possible vulnerabilities can help to preserve their original cultural value.

The conservation and protection of historical structures require a multidisciplinary approach involving a variety of professional skills. For this reason, the ICOMOS produced relevant recommendations in 2003 [3] in order to assist and advise the professionals involved in the assessment of historical masonry buildings. The proposed approach, called “Knowledge-Based Assessment”, is based on the careful analysis of the information about the original structural conception, the construction techniques, the existing damage and the modifications occurred in the building’s life. Both qualitative and quantitative approaches can be adopted in the diagnosis. The importance of the qualitative approach is based on a direct recognition of the monument, whereas the quantitative approach is fundamental in establishing the mechanical data necessary for the analysis phase. In this context, it is convenient to organise different levels of experimental activities. The inspection can start with simpler and less invasive tests, and proceed afterwards to more sophisticated and destructive tests to be executed only in few specific positions.

The experimental characterisation of masonry requires the evaluation of the properties of the constituent materials, i.e. units (stone or brick) and mortar (cement, lime, etc.). With the development of new technologies for the experimental testing of masonry constructions, several Non Destructive Testing (NDT) techniques were proposed to obtain information on the structure without damaging it. Most of NDT methods are based on the transmission of sonic or electromagnetic waves through the material. The sonic test [4] has shown its suitability in the estimation of the elastic properties of the materials, also allowing the determination of internal defects or discontinuities. The Ground Penetrating Radar (GPR) can detect the presence of voids, structural irregularities, different materials or moisture inside the existing masonry. The complementary use of these investigation techniques is a common practice in order to improve the reliability of the NDT results.

Several standards and recommendations for the assessment of historical structures [5] suggest to combine NDT and laboratory testing to improve the level of knowledge of the materials' properties. This approach is usually considered in works dealing with the assessment of historical masonry buildings [6].

Fully destructive tests are not possible in historical structures since all the experimental activities must respect the intrinsic heritage value of the buildings. For this reason, recent research is addressing the development of efficient Minor Destructive Testing (MDT), based either on penetrometric techniques or extraction of small samples of masonry to be tested in the laboratory [7–16].

Penetrometric techniques can be classified either as MDT or NDT [7], since the entity of damage induced to the structure is minimal. These tests are performed directly on the material to be investigated, requiring the removal of plaster or coating surfaces. The penetrometric tests for masonry are usually modified versions of micro-destructive techniques available for other materials (mainly concrete).

The Pin Penetration Test, also known as Windsor Probe, was initially designed for the investigation of hardened concrete according to the US standards [17]. The system uses a metal pin driven into the material since the recorded depth of penetration can be easily correlated to the material's compressive strength. Recent works about the application of such technique to low-strength mortars can be found in [12,18].

The Schmidt Hammer test is also well-known as NDT for concrete [19]. In this case, the compressive strength of the material is correlated to its superficial hardness. Using this principle, Van Der Klugt [20] proposed a pendulum hammer for the quality assessment of masonry joints.

The DRMS (Drilling Resistance Measurement System) method investigates the mortar strength [21] by measuring the force necessary to penetrate a compact material. Other researchers have developed

different types of penetrometers [22,23], using the basic principles of the Standard Penetration Test (SPT) used in soil characterisation.

Recently, Christiansen proposed a torque penetrometer called X-Drill [24] consisting of a four-teeth nail made of stainless steel. A 6 mm diameter pilot hole is executed in order to drive the instrument into the mortar joint. The test is carried out by using a torque-meter that measures the maximum torque M_v resisted by the material. The author presented experimental relationships between the laboratory compressive strengths of some types of mortars and the corresponding values of torque obtained with the X-Drill.

This paper presents a MDT penetrometric technique called Torque Penetrometric Tests (TPT). This apparatus for in-situ testing is based on the procedures of both the geotechnical vane test and the X-Drill technique, but it provides important conceptual improvements in order to obtain more reliable experimental results [25]. This study presents a new mechanical interpretation theory of the TPT based on fracture mechanics. The proposed approach provides a simple analytical expression for the evaluation of the compressive strength of existing mortars. All the parameters of the proposed model are calibrated by means of experimental data available in the existing literature for several types of mortar.

The TPT technique and its interpretation theory were calibrated by considering a representative set of mortar specimens built in the laboratory with different compositions, corresponding to a rather wide range of compressive strengths. The comparison between the TPT measurements and the standard laboratory compression tests on the set of specimens provided the basic results for the interpretation of the TPT response [25]. Additional calibration data were gathered from experiments available in the literature [24]. Finally, the paper presents the results of real applications on a masonry wall built in the laboratory with historical-like materials [9,10], as well as on the existing masonry walls of a historical building struck by the 2012 Emilia-Romagna earthquake.

2. Description of the apparatus

The apparatus proposed in this research for MDT of historical mortars is called Torque Penetrometric Tests (TPT) [25]. It is composed of a nail with four teeth and a torque wrench. The nail is obtained by shaping a class 8.8 steel screw (characteristic tensile and yield strengths: 800 MPa and 640 MPa) with a lathe, and then manufacturing the teeth with a mill (Figure 1). This material was chosen for its high performance, reducing the risk of torque failure of the nail during the test. The cost of the device is limited due to the large availability of the material and the easy manufacturing.

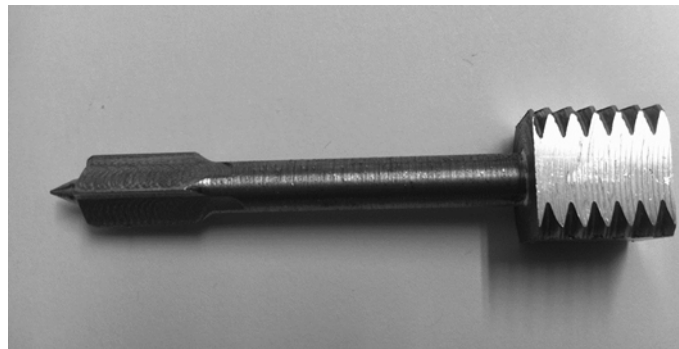


Figure 1 - Novel nail proposed for the Torque Penetrometric Test of historical mortars [25].

The geometry of the novel instrument was studied in order to reduce the sources of uncertainties of the testing technique, as well as the drawbacks detected in previous studies. Christiansen's X-Drill [24] was characterised by a fully toothed shank with an external diameter of 10 mm and an internal diameter of 6.5 mm. The X-Drill method required the measurement of the depth of investigation L_w at each test, set in the range between 15 mm and 20 mm [24]. This operation introduced L_w as a further uncertainty in the problem (see Figure 2a), since the errors related to the estimation of the variable L_w affected also the evaluation of the ultimate normalised torque $m_v = M_v / L_w$ to be related with the material's compressive strength. Furthermore, the fully toothed shank of the X-Drill allowed

the investigation of the sole external part of the mortar joint (see Figure 2a) which, in case of existing masonry, could be either deteriorated by environmental actions or composed of newly repointed material. This problem may lead to rather superficial measurements and thus to possible erroneous estimations of the mechanical properties of mortar. Finally, the outer diameter of the cross section of the X-Drill was 10 mm, a dimension comparable to the thickness of the mortar joints in existing brickwork. In fact, when the existing mortar joints are about 10 mm thick, the X-Drill might hit the bricks' surfaces during the test, yielding results biased by the contacts with a different and more resistant material.

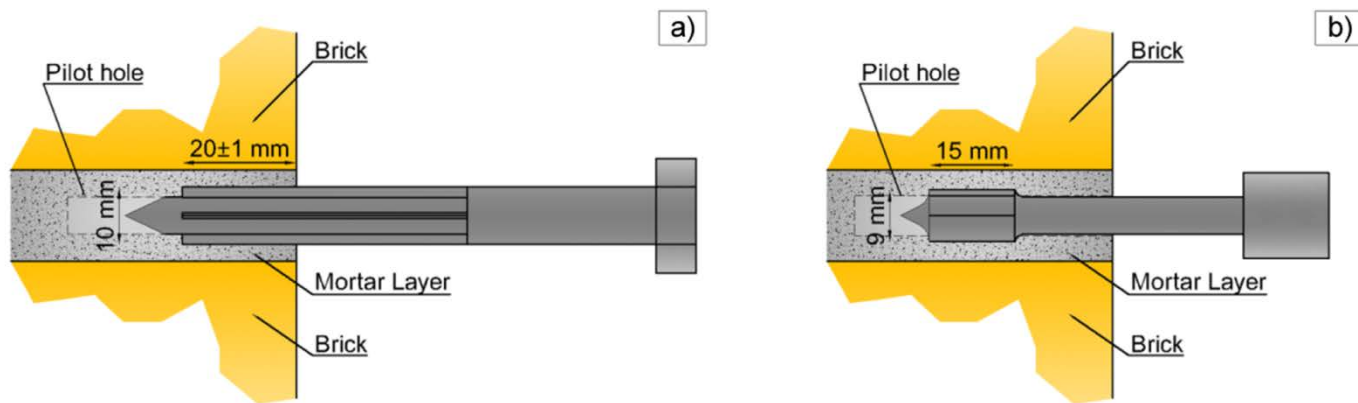


Figure 2 - Longitudinal section of the X-Drill [24] (a) and the novel TPT proposed in this work (b)

The proposed TPT method presents important technical improvements in order to overcome the aforementioned limitations, as shown in Figure 2 and Figure 3. First, the toothed part of the nail's shank is only 15 mm long in order to remove the error related to the measurement of L_w parameter. The remaining part of the nail's shank has a smooth cylindrical shape with 6.5 mm diameter. This solution grants a constant depth of investigation $L_w = 15$ mm. In fact, once the instrument is completely inserted into the material, only the nail's teeth can be effectively in contact with mortar, whereas the remaining length of the shank cannot (see Figure 2b). Second, the TPT apparatus developed in this research allows a deeper insertion of the toothed nail, testing an inner volume of

material and bypassing the external layer of the mortar joint (see Figure 2b). The length of the shaft is 40 mm in this research (see Figure 3) but it could be modified on the basis of the experimental needs. Finally, the external diameter of the novel toothed nail is reduced to 9 mm (Figure 2b) trying to avoid experimental results spoiled by the undesired contact with the bricks.

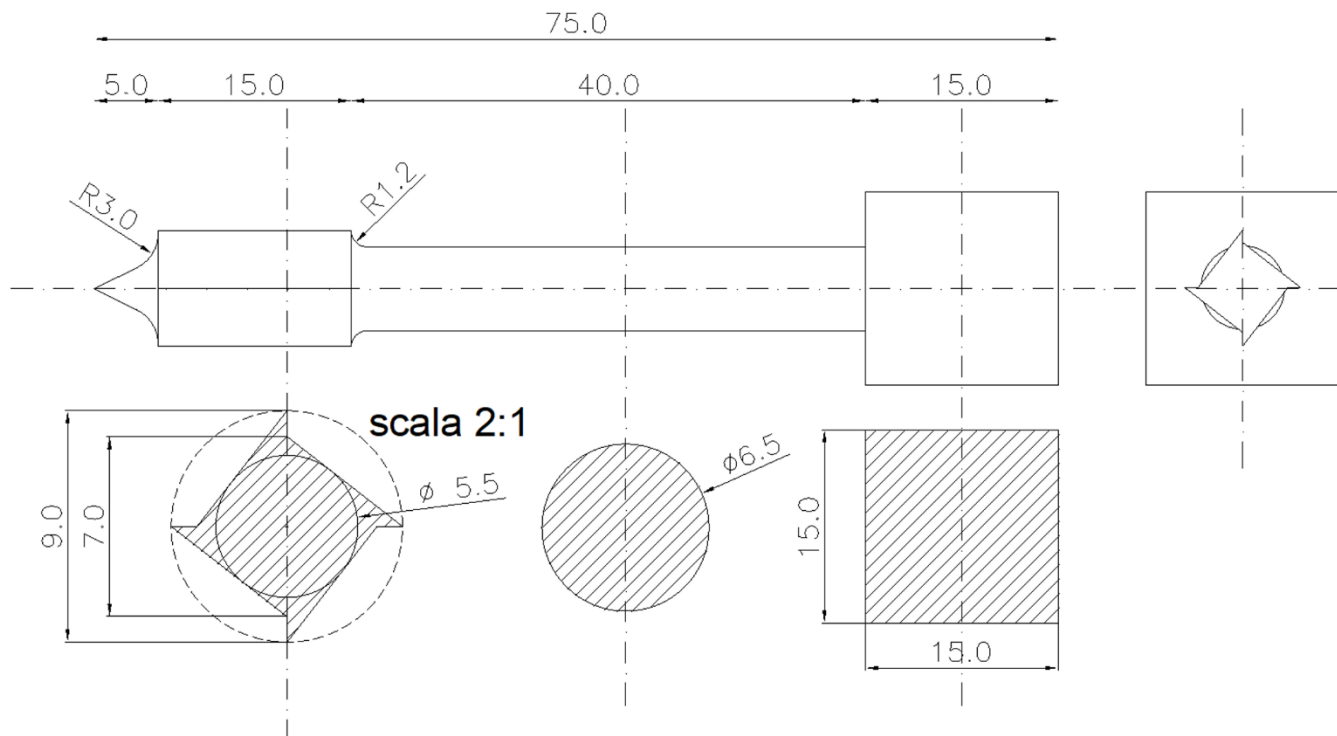


Figure 3 – Technical drawings with specifications and dimensions of the TPT used in this research.

Precise working operations of the TPT are proposed to provide a robust procedure against possible execution mistakes. The first step is the realization of a 7 mm diameter pilot hole to drive the instrument into the mortar joint. Whilst drilling the mortar to execute the pilot hole, the user must check that no brick powder is extracted and that the rate of advance is regular and constant. These two checks are necessary to exclude the presence of bricks or cavities along the track of the pilot hole. The second step is the hammering of the nail inside the pilot hole. The specific geometry of the system (see Figure 3) allows the toothed part to be inserted into the pilot hole while avoiding

directional deviations from the axis of the hole. The third step consists in the use of a torque wrench to measure the torque necessary to bring the material to failure. This research considered a dynamometric torque wrench equipped with an analogic display with $0 \div 30 \text{ Nm}$ range and $\pm 0.5 \text{ Nm}$ precision. Figure 4 shows the torque wrench used for the execution of the tests. The readings could be done using either analogic or digital torque wrenches. These two different tools can have almost the same measurement range, but in general the resolution of the digital transducer is higher than the analogic one, although the precision can be very similar since it is based on the quality of the device. The last step of the TPT operation is the removal of the toothed nail from the mortar joint. A final visual check is necessary to control the material in-between the wings since the possible presence of brick powder might indicate an incorrect measurement, biased by the hit unit. To conclude, the TPT procedure is characterised by specific working stages and subsequent checks that provide a robust and standardized operation to avoid errors.

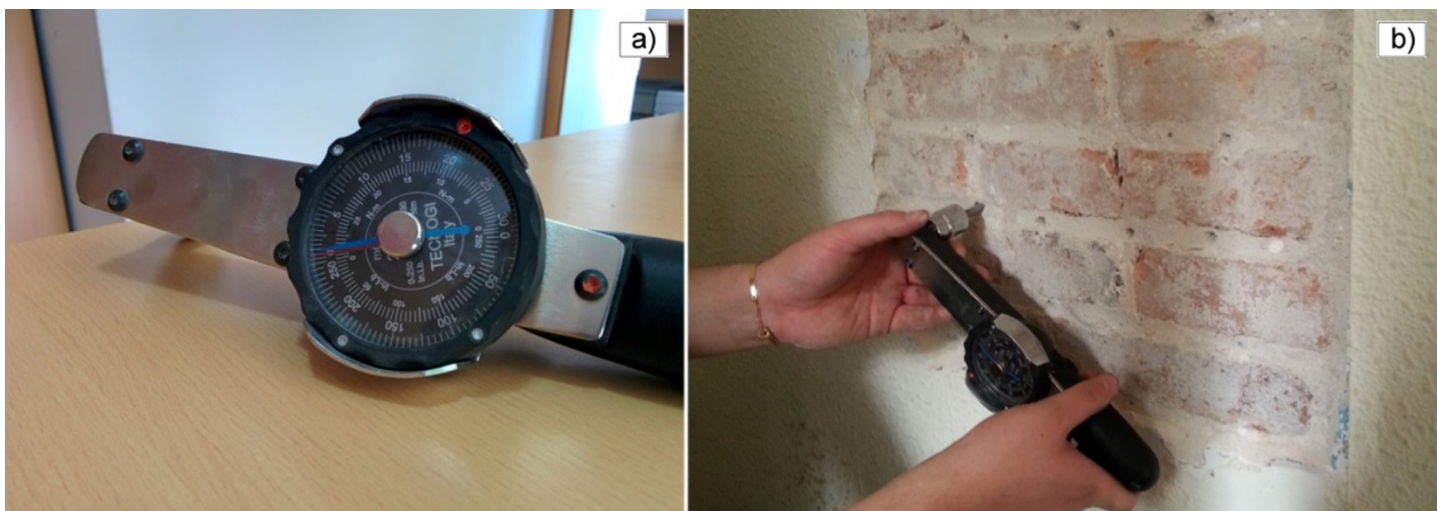


Figure 4 - Analogic torque wrench used for the Torque Penetrometric Test in this work (a) and in-situ application (b).

3. Fracture mechanics interpretative theory

This section presents a novel interpretation model for the TPT based on a fracture mechanics theoretical framework. The model is based on the analysis of the stress state on the fracture surface produced by the toothed nail in the mortar joint, under the hypothesis of no interaction with the brick. Such hypothesis is the result of the careful execution procedure presented in Section 2 and reveals to be acceptable in historical brickwork, where the mortar joints are usually thicker than in modern construction (around 15 mm or even more).

The calibration of the model parameters is carried out by considering comprehensive sets of experimental data available in the literature for different types of mortar.

3.1. Theoretical interpretation of the failure mechanism

The point of departure of the TPT interpretation is the analysis of the equilibrium in a transversal section of the mortar in contact with the toothed nail of the device. Figure 5 shows the stress state acting on one quarter of the volume of mortar being compressed by one of the teeth during the TPT. The application of a torque per unit length m_v induces the development of compression stresses at the contact surface between the nail's tooth and the mortar material. The distribution of these stresses σ is assumed uniform at failure and with constant magnitude. The shear stresses τ at failure are also assumed constant and uniformly distributed along the external circumference with radius $D_e/2$ from the centre of the toothed nail. The loaded cross section of the mortar volume changes linearly with the angular coordinate θ , as well as the magnitude of the shear action on mortar developed by the torque. Both these two variations change with the same rate and thus the compressive stress acting on mortar is constant regardless of the angular coordinate θ of the cross section of the mortar volume between two consecutive teeth, see Figure 5.

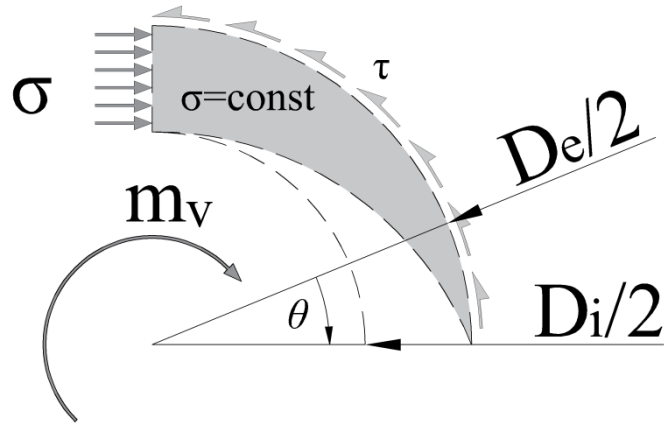


Figure 5 – Stress state in one quarter of the volume of mortar investigated by the Torque Penetrometric Test.

On the basis of the presented hypotheses, it is possible to define the elastic strain energy per length unit j_V on one quarter of the volume of mortar loaded during the TPT, as reported in Equation 1:

$$j_V = \int \frac{\sigma^2}{2E} dV = \frac{\sigma^2}{2E} \cdot \frac{\pi \cdot (D_e^2 - D_i^2)}{32} \quad (1)$$

where σ is the compression on the tooth (assumed constant), E is the Young's modulus of mortar, D_e is the external diameter of the toothed part of the nail and D_i is the diameter of the smooth shank.

The energy is dissipated through the circumferential slip surface of diameter D_e according to a constant distribution of tangential stresses only [26]. The main reason that allow disregarding the normal stresses is the execution of the pilot hole. In fact, the drill removes a cylinder of mortar thus relaxing the radial stresses around the hole into which the TPT is inserted.

The specific energy per length unit j_S on one quarter of the circumferential slip surface is directly related to the fracture energy of the material G_f , as reported in Equation 2:

$$j_S = G_f \cdot \frac{\pi \cdot D_e}{4} \quad (2)$$

The two energies calculated in Equations 1-2 must be equivalent, thus it is possible to obtain an expression of the compression stress on the teeth as reported in Equation 3:

$$\sigma = \sqrt{\frac{16 \cdot E \cdot G_f \cdot D_e}{(D_e^2 - D_i^2)}} \quad (3)$$

The total compression stresses acting over the four teeth of the TPT are in equilibrium with the external torque applied to the instrument (see Figure 5), so they turn out to be:

$$\sigma = \frac{2 \cdot m_v}{(D_e^2 - D_i^2)} \quad (4)$$

The simple equivalence of Equations 3-4 provides a direct relationship between the torque per unit length m_v recorded during the TPT and the mechanical parameters of mortar E and G_f :

$$\frac{2 \cdot m_v}{D_e^2 - D_i^2} = \sqrt{\frac{16 \cdot E \cdot G_f \cdot D_e}{(D_e^2 - D_i^2)}} \quad (5)$$

In analogy with relevant concrete guidelines [27], it is possible to establish regression expressions, relating the Young's modulus E and fracture energy G_f with the compressive strength f_c of mortar material, in the form of simple monomials:

$$E = K_E \cdot \left(\frac{f_c}{f_{c,0}}\right)^\varepsilon ; \quad G_f = K_G \cdot \left(\frac{f_c}{f_{c,0}}\right)^\gamma \quad (6a,b)$$

where the constants K_E , K_G , ε and γ can be defined as the best fit of a large experimental dataset and $f_{c,0} = 1$ MPa is a reference compressive strength. The constants K_E and K_G have the same units of the quantity they are related to (i.e. MPa for K_E and J/m² for K_G if SI units are used), whereas ε and γ are non-dimensional.

The introduction of these expressions into Equation 5 defines a direct relationship between the normalised torque m_v measured during the TPT and the compressive strength f_c of the mortar material:

$$f_c = f_{c,0} \cdot \left[\frac{m_v}{2 \cdot \sqrt{K_E \cdot K_G \cdot D_e \cdot (D_e^2 - D_i^2)}} \right]^{\frac{2}{(\gamma + \varepsilon)}} \quad (7)$$

The constants K_E , K_G , ε and γ can be grouped to simplify further the previous expression as follows:

$$f_c = f_{c,0} \cdot \left[\frac{m_v}{2 \cdot \sqrt{K_A \cdot D_e \cdot (D_e^2 - D_i^2)}} \right]^{\frac{2}{\alpha}} \quad (8)$$

where $K_A = K_E \cdot K_G$ and $\alpha = \varepsilon + \gamma$. The term into the square brackets of Equation 8 is non-dimensional. Equation 8 relates the normalised torque m_v measured during the TPT with the compressive strength of the mortar. The parameters K_A and α establishing such relationship can be calibrated as shown in the next section, by using suitable experimental datasets available in the scientific literature [27–33].

3.2. Calibration of the model parameters

The parameters K_E , K_G , ε , γ of Equations 6-7 have to be carefully defined in order to ensure the accuracy of the interpretative theory for the TPT. The values of K_A and α of Equation 8 can be determined through appropriate relationships between the compressive strength of mortar and other mechanical parameters, i.e. Young's modulus and fracture energy.

The first stage of calibration of the model concerns the parameters K_E and ε . Existing standards and experimental studies in the available literature [27,28,30,34] propose suitable relationships between the Young's modulus and the compressive strength of the material, with expressions very similar to the Equation 6a. Available standards for concrete [27,28] suggest rather low values of ε (respectively 0.33 and 0.30) and high values of K_E (respectively 15100 and 22000 MPa). For the specific case of mortars, these values lead to an overestimation of the elastic modulus. For this reason, they need to be calibrated in order to cover the representative ranges of compressive strengths of lime or lime-cement mortars [8,9,35,36]. According to all the aforementioned references, realistic values of Young's moduli for historical mortar types are between 500 MPa and 5000 MPa for mortars characterized by compressive strengths in the range between 1.0 MPa to 10.0 MPa [35–38]. The data

fit procedure of the whole considered sample of experimental data provides $\varepsilon = 0.7$ and $K_E = 550$ MPa (see Figure 6) with good agreement with the experimental results ($R^2 = 0.697$).

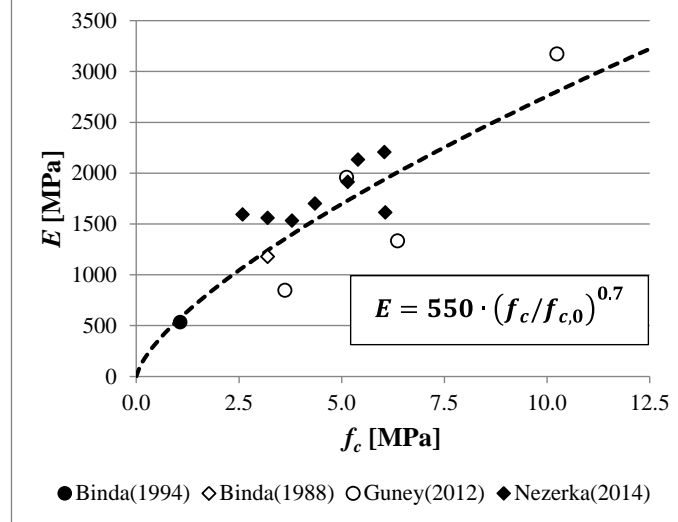


Figure 6 – Empirical relationship between the compressive strength f_c and the Young's Modulus E for different types of mortar ($R^2 = 0.697$) [35–38].

The second stage of the calibration of the model concerns the parameters K_G and γ . Their evaluations require the definition of a suitable relationship between the tangential stress τ and the shear slip s . If this law presents a linear ascending branch followed by linear softening, the area underneath the τ - s diagram can be conventionally quantified by the mode II fracture energy of the material $G_{f,II}$. If a simple bilinear relationship between τ and s is considered for the mortar material, the mode II fracture energy can be expressed as follows:

$$G_{f,II} = \frac{\tau_{max}^2}{2K_0} \mu, \quad (9)$$

where K_0 is the elastic stiffness of the fracturing shear interface, and μ is the ductility factor expressing the ultimate slip s_u as a function of the slip s_0 at the maximum tangential stress τ_{max} .

If the compression stress is small, as in the case of historical mortars, and under the hypothesis of associate plastic flow rule [26], the maximum tangential stress can be assumed as the cohesion of the material according to the Coulomb failure model:

$$\tau_{max} = \frac{1}{2}\sqrt{f_c f_t}, \quad (10)$$

where f_c and f_t are the uniaxial compressive and tensile strengths of the mortar. By substituting Equation 10 into Equation 9, the fracture energy can be defined as a function of both the strengths f_c and f_t . Such relationship can be further simplified by expressing the tensile strength as a function of the compressive one, as it is usual in the existing literature [28,30]:

$$f_t = K_t \left(\frac{f_c}{f_{c,0}} \right)^\beta \quad (11)$$

Where the K_t and β parameters can be evaluated empirically from available experimental datasets. References [28,30] suggests K_t in the range 0.20 to 0.40 MPa, and β in the range 0.70 to 1.0. The reference compressive strength can be assumed $f_{c,0} = 1$ MPa as in Equations 6-8.

Available experimental studies normally relate the compressive strength of mortar with its flexural strength f_{ft} instead of the tensile one. This is due to the intrinsic difficulties related to the execution of direct tensile tests. The available standards for mortar materials actually recommend the development of flexural tests [39]. The flexural strength can be converted to the tensile one using a reduction factor that assumes different values depending on the specific standard. According to [27,28,34], if the conventional $40 \times 40 \times 160$ mm³ specimens are considered for the flexural tests of mortar, the ratio between tensile and flexural strengths is within the range 0.44-0.83. In almost all the aforementioned references, the correlation proposed between f_t and f_{ft} is linear. Therefore, it is possible to define the relationship between the compressive and flexural strengths by using a suitable value of the parameter K_{ft}

$$f_{ft} = K_{ft} \left(\frac{f_c}{f_{c,0}} \right)^\beta \quad (12)$$

The constant K_{ft} and the exponent β of Equation 12 can be obtained by a data fit procedure of available experimental data [10,18,29,30,40], specific to the type of weak historical mortars that are considered in the present study. The performed identification yields for the cited parameters values of 0.60 MPa and 0.75, with an R^2 of 0.866 (see Figure 7). The K_t parameter of Equation 11 can be thus assumed equal to 0.38 MPa, i.e. to the mean value of the interval 0.25 – 0.50 MPa that emerges from the experimental data transformed to direct tensile strength [28].

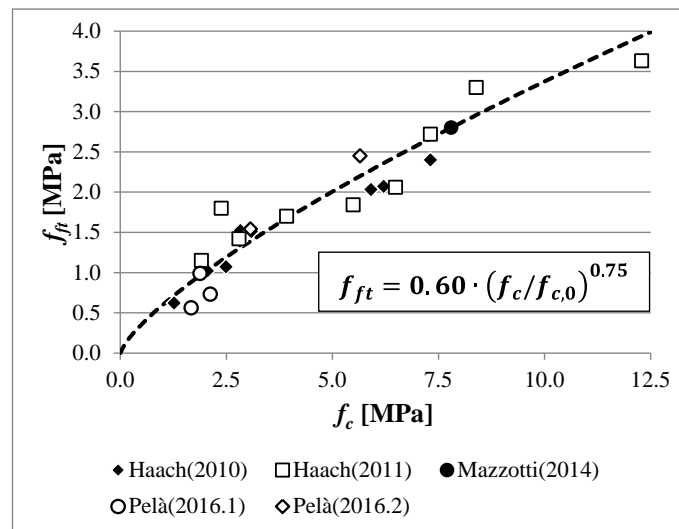


Figure 7 - Empirical relationship between the compressive strength f_c and the flexural strength f_{ft} for different types of mortar ($R^2 = 0.866$) [10,18,29,30,40].

The elastic stiffness of the fracturing shear interface K_0 in Equation 9 is very difficult to be evaluated, since it is related to the characteristic length of the fracture process. An approximation based on the hypotheses of linear elastic – linearly softening brittle material [41] provides the following expression:

$$G_{F,II} = \frac{\sqrt{K_t f_{c,0}}}{4} s_u \left(\frac{f_c}{f_{c,0}} \right)^{\frac{1+\beta}{2}} \quad (13)$$

The ultimate slip s_u of the mode II fracture is almost independent of both the type of experimental set up and the material strength [31,33,42,43] and it can be assumed ranging between 0.5 mm and 1.0 mm, with lower values holding for stiffer and stronger mortars. The fracture energy can be thus expressed in the form of Equation 6b by considering the following definitions of the corresponding parameters:

$$K_G = \frac{\sqrt{K_t f_{c,0}}}{4} s_u, \quad \gamma = \frac{1+\beta}{2} \quad (14a,b)$$

The mode II fracture energy is a debated parameter and its experimental determination is not straightforward. Available studies [33,44] show that mode II and mode III fracture energies can constitute a ratio to mode I values obtained by means of different experimental methods. Reference [38] provides a mode II fracture energy of 100 J/m² for weak and strong mortar at a confining pressure of 500 kPa. Reference [43] provides characteristic values for tuff masonry in shear of 120-170 J/m² for a compressive strength of 2.5 MPa. Representative values of mode I fracture energy of mortar are in the range 5-10 J/m² in available studies [31,42,45]. Thus, realistic values of mode II fracture energy for typical historical mortar can be defined in the range between 100 J/m² and 200 J/m², whilst ordinary cementitious mortars might reach upper bound values around 400 J/m² [37, 40]. The parameter K_G can be evaluated by introducing suitable values of K_t and s_u . As indicated before, K_t can be assumed equal to 0.38 MPa and the ultimate slip can range between 0.5 mm and 1.0 mm [31,33,42,43]. Thus, the K_G parameter can range between 80 J/m² and 150 J/m² (Equation 14a), depending on the assumed value of the ultimate slip. Smaller K_G values should be referred to stiffer mortars, which exhibit shorter slips. For example, if the mortar compressive strength is within the interval 1.0 ÷ 3.0 MPa, the corresponding range of mode II fracture energy can be evaluated within the interval 150 ÷ 210 J/m², i.e. in good agreement with the experimental results from the literature.

On the basis of the previous considerations, a realistic value for K_G can be set around 100 J/m^2 . Considering the parameter β equal to 0.75, as discussed above, the γ exponent results equal to 0.87 according to Equation 14b. All these values, inserted into Equation 6b, approximate rather well the parameters of the experimental dataset. Hence, $K_A = K_E \cdot K_G = 550 \cdot 0.10 = 55 \text{ N}^2/\text{mm}^3$ and $\alpha = \varepsilon + \gamma = 0.7 + 0.87 = 1.57$.

The calibration of the model parameters leads finally to the analytical expression relating the compressive strength of the material to the maximum normalized torque measured during the TPT:

$$f_c = \left[\frac{m_v}{2 \cdot \sqrt{55 \cdot D_e \cdot (D_e^2 - D_i^2)}} \right]^{1.274}, \quad (15)$$

Where f_c is expressed in [MPa], m_v in [Nmm/mm], and D_e and D_i in [mm].

4. Experimental validation of the Fracture Mechanics interpretative theory

This section presents the experimental validation of the novel interpretative theory for the TPT. The calibration of the procedure was carried out by considering an experimental program developed by the authors [7,25] as well as the data from an additional campaign available in the literature [24]. The practical application of the TPT and the validation of the interpretative theory are eventually presented with reference to experiments on a masonry wall built in the laboratory with historical-like materials [9,10] and on the existing masonry walls of a historical building struck by the 2012 Emilia-Romagna earthquake.

4.1. Calibration of TPT through the experimental programs at UNIBO and DTI

The calibration of the instrument was carried out by comparing the standard compressive strengths obtained from laboratory tests with the maximum torque values measured with the TPT [7,25] and the X-Drill [24]. The two experimental programs were carried out respectively at the University of Bologna (UNIBO) by the present authors and at the Danish Technological Institute (DTI) by Christiansen. All the experimental data are reported for sake of completeness in the Annexes A.1 and A.2.

The experimental program at UNIBO consisted in comparing the maximum torque measured during the TPT with the standard compressive strength obtained from laboratory tests. A rigorous way to compare these two parameters is to perform both the tests directly on the same specimen. In order to limit the influence of the minor damage induced by the TPT test, the compression tests were carried out by loading the same faces where the penetrometric tests were performed. In this way, the part of the specimen damaged by the TPT was located next to the loading plates, i.e. in the most confined part of the sample during the compression test. The current standard for the mechanical characterisation of mortar [46] requires prismatic samples with nominal dimensions $40 \times 40 \times 160$ mm³. However, the small dimensions of these specimens would not permit the execution of the torque tests, causing an early collapse of the specimen and also avoiding the possibility of subsequent testing in compression. For this reason, bigger cubic specimens were chosen for the calibration of the tool, using the standard for concrete materials as reference [47]. TPT was executed twice on each sample. The specimen was firstly placed between the platens of a loading machine under a constant compression of 2 kN, owing to avoid any movement of the specimen during the torque test. It is worth noting that the X-Drill investigation by Christiansen [24] showed that the vertical stress does not influence the test results. Once the sample was fixed between the plates, the nail was knocked into the pilot hole using a hammer until its toothed part was completely inserted, see Figure 8.

The testing operation proceeded with the application of a torque to the inserted toothed nail. This operation was carried out using the torque wrench, recording for each test the maximum measured value of the torque. The torque wrench must be handled with some caution in order to avoid any transversal force that could affect the test and lead to an erroneous evaluation of the maximum torque.



Figure 8 - Mortar sample with the inserted toothed nail ready for the torque test

The subsequent stage of the experimental program consisted in the compression tests of the cubic specimens. Each sample was placed with the damaged faces in direct contact with the loading platens of the compression machine. The peak stress recorded during each experiment was regarded as the compressive strength of the tested mortar specimen.

The experimental program at DTI was also based on the comparison between the maximum torques measured with the X-Drill device and the standard compressive strengths obtained from laboratory tests. This second experimental program was considered to extend the database of TPT results obtained at UNIBO. However, X-Drill original measurements data had to be adjusted in order to make possible a direct comparison with the TPT results, since the two penetrometers have different geometries. In particular, the measured ultimate torque is strictly dependent on the fracture surface activated by the tools. The TPT and the X-Drill provide different readings of the maximum torque if

executed over the same material, because their toothed nails have different areas in contact with the investigated material. The values of the internal and external diameters of the toothed part of the nail D_i and D_e are different in the two instruments: $D_i=7$ mm and $D_e=9$ mm for the TPT whereas $D_i=6.5$ mm and $D_e=10$ mm for the X-Drill. For this reason, the original readings from the X-Drill campaign at DTI were properly adjusted in order to make them directly comparable to those obtained with TPT. Using Equation 4, the following expression was adopted to convert the original normalised ultimate torques measured with X-Drill $m_{v,XDrill}$ to their adjusted values $m_{v,TPT}$ comparable with TPT:

$$m_{v,TPT} = \frac{\left[\sqrt{(D_e^2 - D_i^2) D_e} \right]_{TPT}}{\left[\sqrt{(D_e^2 - D_i^2) D_e} \right]_{XDrill}} m_{v,XDrill} = 0.706 m_{v,XDrill} \quad (16)$$

Figure 9 shows the adjusted data $m_{v,TPT}$ from the DTI tests together with the TPT data from the UNIBO experiments, all related to the corresponding standard strengths of the investigated mortars. The data fitting was carried out by using a least square algorithm where the two variables are the parameters K_A and α of Equation 8. This methodology provided the values $K_A = 54 \text{ N}^2/\text{mm}^3$ and $\alpha = 1.53$ with high coefficient of determination $R^2 = 0.96$. Moreover, those parameters are very close to those suggested in Section 3 for the fracture mechanics interpretative theory of the TPT, showing the correctness of the proposed model.

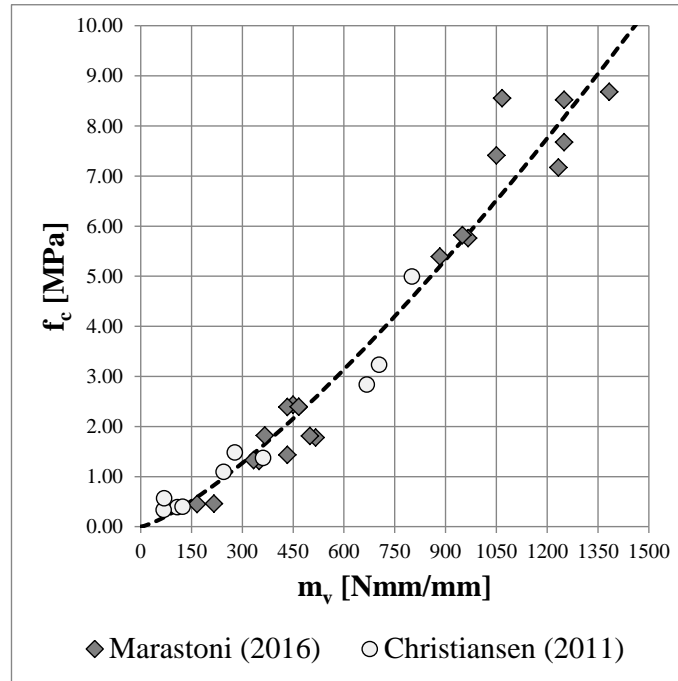


Figure 9 - Empirical correlation between the standard compressive strength of mortar and the measurements made with the Torque Penetrometer Tests developed at UNIBO [7,25] and the X-Drill tests developed at DTI [24].

4.2. TPT applied to a historical-like wall built at UPC

The TPT was used to perform experiments on a wall built in the Laboratory of Technology of Structures and Building Materials of the Technical University of Catalonia (UPC-BarcelonaTech), Spain.

The lime mortar and bricks used for the construction were chosen in order to simulate a handmade historical masonry wall. The dimensions of the brick units were $275 \times 135 \times 45 \text{ mm}^3$. The mortar was mixed starting from the raw components, using fine river sand with $0 \div 2 \text{ mm}$ grain size. Natural hydraulic lime NHL 3.5 was utilized with volume ratio of binder to aggregate of 1:3, which is rather typical in the manufacturing of mortar in traditional masonry construction [34,48].

Using the aforementioned components, a wall with rough dimensions $1.50 \times 0.75 \times 0.275 \text{ m}^3$ was built in Flemish bond (see Figure 10). The external thickness of the joints was variable, from 10 mm to 15 mm, due to the imperfect faces of the handmade bricks. The wall was stored in the laboratory

for 110 days, i.e. until when mortar had reached a sufficient strength in order to replicate the property of a historical masonry.



Figure 10 - Historical-like wall built at UPC: construction stage (a) and the wall at the end of the construction (b).

During the construction of the wall, the mortar was characterised according to the EN 1015-11:2007 procedure [39]. Standard samples were prepared using the same mortar utilised in the wall construction, allowing a complete characterisation of the material in tension and compression. Three $40 \times 40 \times 160 \text{ mm}^3$ prisms were tested 110 days after their construction to determine the flexural strength f_{ft} , whereas the compressive strength f_c was assessed on the six halves produced by the splitting of the prisms from the flexure tests.

The average value of the flexural strength was 0.38 MPa with a coefficient of variation (CV) of 6%. The compression tests were performed on the six fragments produced by the flexural tests. The two stumps measured roughly $40 \times 40 \times 80 \text{ mm}^3$ and were loaded with steel loading platens of $40 \times 40 \text{ mm}^2$. The average compressive strength was 2.79 MPa with a CV of 9%.

The operational sequence used in carrying out the TPT tests was intended to reproduce a generic in-situ activity on existing walls. The penetrometric tests were performed in random positions on the masonry wall, in order to provide globally representative results. The pilot holes were performed

using a portable driller equipped with a 7 mm bit made of hardened steel, carefully checking the orthogonality of the hole to the external surface of the wall (Figure 11a). Once the pilot holes were properly made, the nail was hammered into each hole (Figure 11b) and the TPT was executed using the torque wrench (Figure 11c). The resulting moments measured in 12 positions are reported in Table 1.

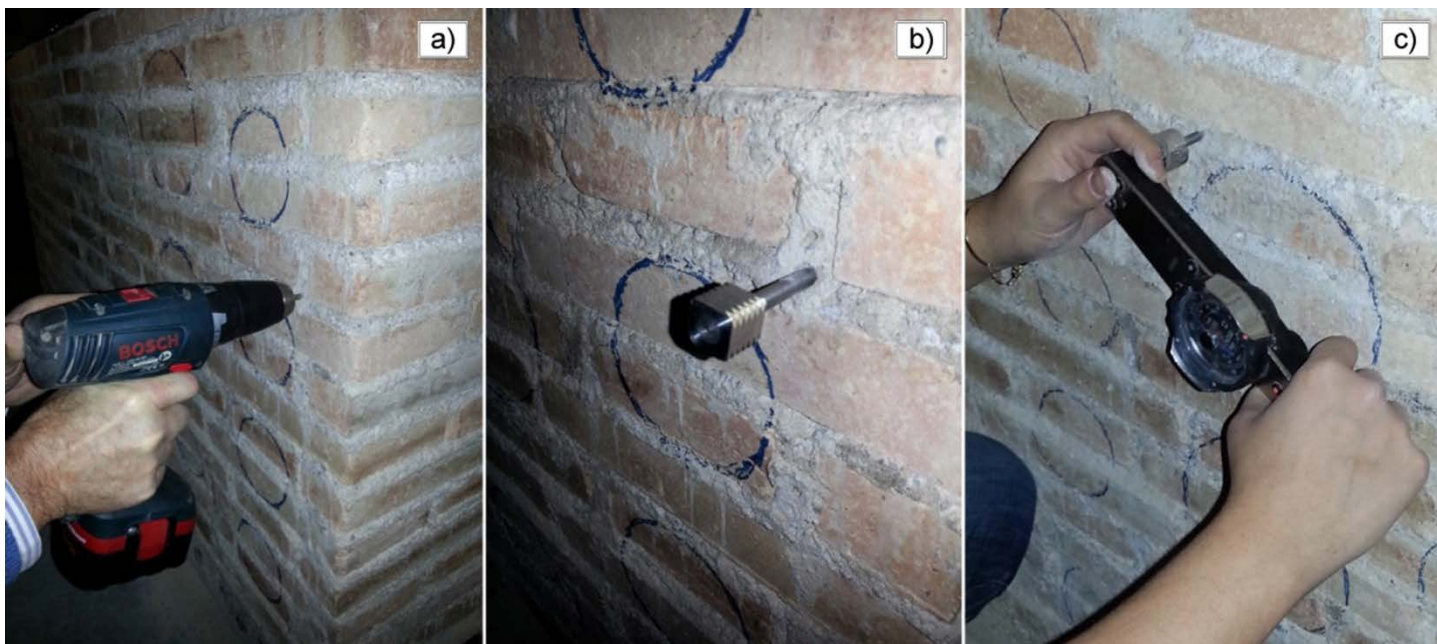


Figure 11 - Execution of the pilot hole on the historical-like wall built at UPC (a), toothed nail inserted into the mortar joint (b) and test execution using the torque wrench (c).

Table 1 - Experimental results of the Torque Penetrometric Tests performed on the wall built at UPC.

Test	M_v [Nm]	m_v [Nmm/mm]	Test	M_v [Nm]	m_v [Nmm/mm]
TPT01	6.5	433	TPT07	10.0	667
TPT02	8.0	533	TPT08	10.0	667
TPT03	10.0	667	TPT09	8.0	533
TPT04	7.5	500	TPT10	9.0	600

TPT05	7.0	467	TPT11	7.5	500
TPT06	9.5	633	TPT12	7.5	500
			<i>Avg.</i>	<i>8.4</i>	<i>558</i>
			<i>CV</i>	<i>15%</i>	<i>15%</i>

The average value obtained by the experimental testing with the latest tool geometry was $M_v=8.4$ Nm with a CV of 15%. The specific ultimate torque related to the aforementioned average value is $m_v=558$ Nmm/mm. Equation 15 can be used for the estimation of the mortar strength, providing a value of the compressive strength of 2.87 MPa. There is only a 3% difference between the actual compressive strength obtained in the mechanical characterisation and its estimated value with TPT. This low difference between the standard compression test results and the evaluation from the penetrometric readings suggests the reliability of the methodology proposed, returning low scattered results (CV=15%) and a good precision in the prediction of the compressive strength of mortar.

4.3. TPT applied to a Historical Masonry Building

The TPT was executed during an experimental campaign carried out on a 19th century rural masonry building, called “Leona”, located in the countryside of the town of Cento, in the province of Ferrara, Italy. The building was damaged by the 2012 Emilia Earthquake (see Figure 12a), as well as most of the rural structures of the area, due to the very poor materials employed in the construction. The inspection and the analysis of the damage suffered by Leona building were supported by an experimental campaign focusing on the assessment of the mechanical properties of materials, as an essential issue in planning the necessary repair and retrofit interventions.

The experimental program consisted in the execution of a sequence of increasingly destructive tests. As usual, during the inspection of existing historical structures, the first analyses were carried out using MDT techniques in order to limit the damage induced to the structural members. The TPT was

performed to get a quick in-situ assessment of the strength of mortar in the joints. Afterwards, mortar joint samples were extracted from the existing brickwork, taking advantage of zones with disjointed bricks or cracks, and then subjected to double punch test (DPT) in the laboratory [7,8,13,14]. Finally, on site destructive tests were carried out using the double flat jack (DFJ) in order to obtain a direct evaluation of the strength of masonry (Figure 12b).

The TPT and DPT were executed in four different positions on the structure in order to evaluate the spatial variability of the properties of the materials in the Leona building. DFJ was carried out only in two positions. The correlation of accurate and expensive investigation techniques with cheaper and faster MDT evaluations can provide information about the spatial variability of the mechanical properties on the same building. By this way, different construction techniques, building ages, conservation levels and damage severities can be detected and distinguished.

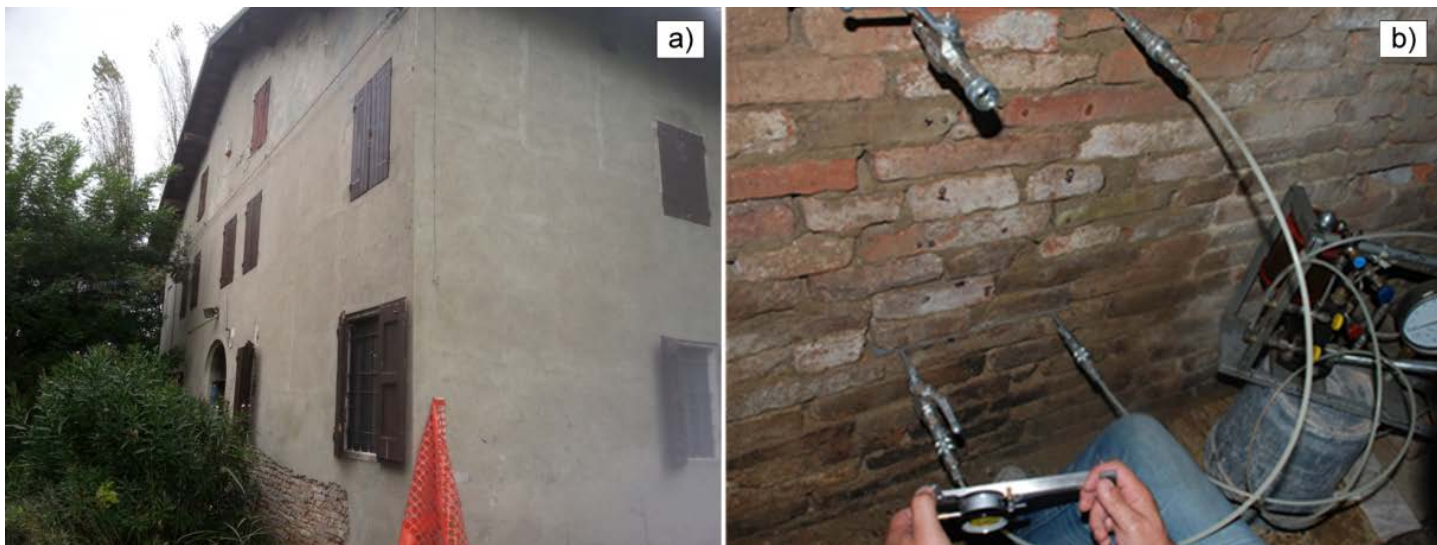


Figure 12 - External view of Leona Building in Cento (Ferrara, Italy) (a) and double flat jack executed on an external wall (b).

Table 2 presents a summary of all the results obtained from the different experiments carried out on the different positions of Leona building.

The TPT readings were twelve for each one of four selected positions. As shown, the estimations of the mortar compressive strengths measured in the four different positions ranged between 0.49 MPa and 1.16 MPa.

Four mortar samples for each selected position were subjected to DPT in the laboratory. As reported in previous researches available in the literature [7,8,13–16], the ultimate load obtained from the DPT cannot be considered equal to the uniaxial compressive strength of the material due to the confinement pressure exerted by the loading plates on the thin mortar specimen. The conversion between the DPT and the uniaxial compressive strengths can be evaluated by applying the correction factor of 0.7 proposed by [14], leading to the average compressive strengths for each position reported in Table 2.

The DFJ tests provided very low values of the compressive strength (0.52 MPa and 0.82 MPa). These results showed clearly that the failure of masonry, under this compression setup, occurred entirely in the mortar joint due to local crushing. This type of response constituted a further evidence of the poor properties of the investigated mortar, as usual in the rural construction of the region. Therefore, the compressive strength values derived from the DFJ could be compared with the DPT results and the TPT readings performed in the same positions.

Table 2 shows the comparison among the predictions from the different experimental techniques. TPT estimations of the mortar compressive strength are in remarkable agreement with those provided by other consolidated testing methods (DPT and DFJ). The highest error of the TPT of -27%, obtained in the Position 2, was probably due to the testing of mortar in a more superficial position than DPT and DFJ, and it could be related to a local superficial anomaly due to environmental decay. Overall, the good agreement highlights the validity of the TPT interpretative theory presented in this paper. In addition, the TPT showed its capability to detect the variability of the mechanical properties for different positions of the building with a very good precision and with acceptable scattering of the obtained measures.

Table 2 - Comparison of the different experimental predictions of mortar compressive strength in Leona Building.

Test	Pos. 1 [MPa]	Pos. 2 [MPa]	Pos. 3 [MPa]	Pos. 4 [MPa]
TPT	0,49	0,54	0,91	1,16
DPT	0,55	0,86	0,94	0,90
DFJ	0,52	0,82		
Average	0,52	0,74	0,93	1,03
TPT Error	-6%	-27%	-2%	+13%

5. Conclusions

This research has provided a reliable calibration and an interpretation model for a new MDT technique, called Torque Penetrometric Test (TPT), developed for a quick in-situ evaluation of the compressive strength of historical mortars [7,25]. The TPT is a portable apparatus that is characterised by easy execution and repeatability of measurements. The equipment has only two components, i.e. a steel nail with four protruding teeth and a torque wrench. This novel instrument is conceptually similar to the geotechnical testing method of the vane shear test and constitutes an improvement of the previously proposed X-drill method [24]. The research proposes a specific shape for the toothed nail to be inserted into the mortar joint, making the technique more suitable for the investigation of historical mortars. The proposed enhancements are effective in reducing the uncertainties in the measurements since:

- the teeth's length $L_w=15$ mm allows for a standardisation of the penetration depth;
- the shank's diameter of 6.5 mm allows the deep penetration of the nail into the mortar joint without any interaction with the superficial portion of the mortar joint in the wall;

- the diameter of the toothed head of 9 mm allows inserting it quite easily into most of the existing mortar joints;
- the peculiar geometry of the toothed nail of the TPT is suitable both for superficial and deep measurements of the strength of mortar in existing walls.

The present research, as a first approach to set up the TPT, has considered a simple analogic torque wrench, even though future applications could use more expensive digital acquisition systems to obtain more accurate estimations, as well as continuous measurements of both the torque and twisting angle.

An interpretative theory has been proposed by developing a micro-mechanical analysis of the stress state induced by the TPT on the investigated mortar, and also considering basic concepts of fracture mechanics. The presented theory yields a simple analytical expression relating the compressive strength of the mortar with the normalised ultimate torque (maximum torque per unit length) recorded during the TPT. All the parameters of the proposed model have been carefully calibrated making reference to comprehensive experimental datasets available in the literature for mortars with compressive strength within the typical ranges for existing masonry buildings. This activity has allowed the determination of suitable relationships among the Young's modulus, the fracture energy and the compressive strength of different types of mortars.

The results obtained from this study can be summarised as follows:

- the proposed interpretation theory for the TPT has shown a remarkable agreement with the best fit curves defined on the basis of compression and penetrometric experiments developed at the laboratories of UNIBO and DTI. The whole experimental dataset covers a range of mortar compressive strengths from 0.34 MPa to 8.55 MPa, proving the applicability of the method to the typical mortar types of historical masonry buildings.
- the proposed interpretation theory of the TPT has shown to be accurate in predicting the compressive strength of the mortar used in a wall built in the UPC laboratory according to

traditional techniques of historical masonry construction. The completed TPT evaluation has provided a compressive strength almost equal to the standard strength got from direct compression tests.

- the TPT has been also conducted on a historical masonry building damaged by the 2012 Emilia-Romagna earthquake (Italy). The estimation of the mortar strength provided by the calibrated theory has resulted in a remarkable agreement with values derived from other more consolidated experimental techniques, i.e. double punch tests and double flat jack tests. Moreover, the TPT has shown to be a useful approach for its speed and ease in the in-situ assessment of the mortar strength. This specific feature of the TPT makes it appropriate for historical structures of the built heritage with medium to poor material properties. The TPT has shown also to be a suitable complement to more invasive testing methods, such as the double flat jack test and the double punch test, allowing to plan more efficient experimental campaigns on historical masonry buildings.
- The interpretative theory proposed in this paper for TPT constitutes a very helpful tool to improve the understanding and post-processing of experimental results.

Acknowledgements

This research has received the financial support from the ReLUIIS 2013 research program (Theme 2 – Line 3 – Task 1: Analysis and Development of New Materials for Seismic Retrofit) granted by the DPC – Civil Protection Agency, and from the MINECO (Ministerio de Economía y Competitividad of the Spanish Government) and the ERDF (European Regional Development Fund) through the MULTIMAS project (Multiscale techniques for the experimental and numerical analysis of the reliability of masonry structures, ref. num. BIA2015-63882-P). Diego Marastoni acknowledges the University of Bologna and the SPINNER Consortium for granting his PhD scholarship. Benedetti&Partners consulting is also gratefully acknowledged for making available the experimental results carried out in Cento (FE), Italy.

References

- [1] H. Kaplan, H. Bilgin, S. Yilmaz, H. Binici, A. Öztas, Structural damages of L’Aquila (Italy) earthquake, *Nat. Hazards Earth Syst. Sci.* 10 (2010) 499–507. doi:10.5194/nhess-10-499-2010.
- [2] N. Augenti, F. Parisi, Learning from Construction Failures due to the 2009 L’Aquila, Italy, Earthquake, *J. Perform. Constr. Facil.* 24 (2010) 536–555. doi:10.1061/(ASCE)CF.1943-5509.0000122.
- [3] ISCARSAH, Recommendations for the analysis, conservation and structural restoration of Architectural Heritage, *Int. Counc. Monum. Sites.* (2003).
- [4] D.. McCann, M.. Forde, Review of NDT methods in the assessment of concrete and masonry structures, *NDT E Int.* 34 (2001) 71–84. doi:10.1016/S0963-8695(00)00032-3.
- [5] EN 1998-3:2013, Eurocode 8: Design of structures for earthquake resistance - Part 3: Assessment and retrofitting of buildings, (2013).
- [6] V. Bosiljkov, M. Uranjek, R. Žarnić, V. Bokan-Bosiljkov, An integrated diagnostic approach for the assessment of historic masonry structures, *J. Cult. Herit.* 11 (2010) 239–249. doi:10.1016/j.culher.2009.11.007.
- [7] D. Marastoni, Advanced Minor Destructive Testing for the Assessment of Existing Masonry, (2016) PhD Thesis, University of Bologna.
- [8] D. Marastoni, L. Pelà, A. Benedetti, P. Roca, Combining Brazilian Tests on masonry cores and Double Punch Tests for the mechanical characterization of historical mortars, *Constr. Build. Mater.* 112 (2016) 112–127. doi:10.1016/j.conbuildmat.2016.02.168.
- [9] L. Pelà, E. Canella, A. Aprile, P. Roca, Compression test of masonry core samples extracted from existing brickwork, *Constr. Build. Mater.* 119 (2016) 230–240. doi:10.1016/j.conbuildmat.2016.05.057.

- [10] L. Pelà, P. Roca, A. Benedetti, Mechanical Characterization of Historical Masonry by Core Drilling and Testing of Cylindrical Samples, *Int. J. Archit. Herit.* 10 (2016) 360–374. doi:10.1080/15583058.2015.1077906.
- [11] L. Pelà, K. Kasioumi, P. Roca, Experimental evaluation of the shear strength of aerial lime mortar brickwork by standard tests on triplets and non-standard tests on core samples, *Eng. Struct.* 136 (2017) 441–453. doi:10.1016/j.engstruct.2017.01.028.
- [12] L. Pelà, P. Roca, A. Aprile, Combined in-situ and laboratory minor destructive testing of historical mortars, *Int. J. Archit. Herit.* (2017). doi:10.1080/15583058.2017.1323247.
- [13] L. Pelà, A. Benedetti, D. Marastoni, Interpretation of Experimental Tests on Small Specimens of Historical Mortars, in: J. Jasieńko (Ed.), *Struct. Anal. Hist. Constr.*, DWE, Wrocław, Poland, 2012: pp. 716–723.
- [14] UIC, Leaflet 778-3R: Recommendations for the inspection, assessment and maintainance of masonry arch bridges., (1995).
- [15] C. Bilello, A. Brencich, C. Corradi, M. Di Paola, E. Sterpi, Experimental Tests and Theoretical Issues for the Identification of Existing Brickwork, in: 10th North Am. Mason. Conf., St. Louis, Missouri, USA, 2007: pp. 964–974.
- [16] A. Brencich, E. Sterpi, Compressive Strength of Solid Clay Brick Masonry : Calibration of Experimental Tests and Theoretical Issues, in: P.B. Lourenço, P. Roca, C. Modena, S. Agrawal (Eds.), *Struct. Anal. Hist. Constr.*, New Delhi, India, 2006: pp. 757–766.
- [17] ASTM C803, Standard Test Method for Penetration Resistance of Hardened Concrete, ASTM Int. (2010).
- [18] L. Pelà, P. Roca, A. Aprile, Comparison of MDT techniques for mechanical characterization of historical masonry, in: Van Balen & Verstrynghe (Ed.), *Proc. the10th Int. Conf. Struct. Anal. Hist. Constr.*, Taylor & Francis, London, 2016: pp. 769–775.
- [19] EN 12504-2:2012, Testing concrete in structures - Part 2: Non-destructive testing. Determination of rebound number, (2012).
- [20] L.J.A.R. Van Der Klugt, The pointing hardness tester - an instrument to meet a need, *Mater. Struct.* 24 (1991) 471–476.
- [21] R. Nogueira, A.P. Ferreira Pinto, A. Gomes, Assessing mechanical behavior and heterogeneity of low-strength mortars by the drilling resistance method, *Constr. Build. Mater.* 68 (2014) 757–768. doi:10.1016/j.conbuildmat.2014.07.010.
- [22] R. Felicetti, N. Gattesco, A penetration test to study the mechanical response of mortar in ancient masonry buildings, *Mater. Struct.* 31 (1998) 350–356. doi:10.1007/BF02480678.

- [23] D. Liberatore, N. Masini, L. Sorrentino, V. Racina, M. Sileo, O. AlShawa, L. Frezza, Static penetration test for historical masonry mortar, *Constr. Build. Mater.* 122 (2016) 810–822. doi:10.1016/j.conbuildmat.2016.07.097.
- [24] P.D.V. Christiansen, In Situ Determination of the Compressive Strength of Mortar Joints Using an X-Drill, *Mason. Int.* 24 (2011) 31–38.
- [25] D. Marastoni, A. Benedetti, L. Pelà, Evaluation of Mortar Strength in Existing Masonry Structures through a Minor Destructive Technique, in: C. Modena, F. da Porto, M.R. Valluzzi (Eds.), 16th Int. Brick Block Mason. Conf., Taylor & Francis, London, Padova, 2016: pp. 1699–1706. doi:10.1201/b21889-225.
- [26] W.-F. Chen, D.-J. Han, *Plasticity for Structural Engineers*, Springer-Verlag New York Inc., New York, USA, 1988.
- [27] fib, *fib Model Code for Concrete Structures 2010*, Wiley-VCH Verlag GmbH & Co. KGaA, Weinheim, Germany, 2013. doi:10.1002/9783433604090.
- [28] EN 1992-1-1:2005, Eurocode 2: Design of concrete structures - Part 1-1: General rules and rules for buildings, (2005).
- [29] V.G. Haach, G. Vasconcelos, P.B. Lourenço, G. Mohamad, Influence of the mortar on the compressive behavior of concrete masonry prisms, *Mecânica Exp.* 18 (2010) 79–84.
- [30] V.G. Haach, G. Vasconcelos, P.B. Lourenço, Influence of aggregates grading and water/cement ratio in workability and hardened properties of mortars, *Constr. Build. Mater.* 25 (2011) 2980–2987. doi:10.1016/j.conbuildmat.2010.11.011.
- [31] R. Van Der Pluijm, H. Rutten, M. Ceelen, Shear Behaviour of Bed Joints, in: 12th Int. Brick/Block Mason. Conf., Madrid, Spain, 2000: pp. 1849–1862.
- [32] H.W. Reinhardt, J. Ošbolt, X. Shilang, A. Dinku, Shear of structural concrete members and pure mode II testing, *Adv. Cem. Based Mater.* 5 (1997) 75–85. doi:10.1016/S1065-7355(96)00003-X.
- [33] C.H. Surberg, E.K. Tschegg, Fracture behaviour testing of cementitious interfaces in mode I, II, III, in: R. de Borst, J. Mazars, G. Pijaudier-Cabot, J.G.M. van Mier (Eds.), *Proc. 4th Int. Conf. Fract. Mech. Concr. Concr. Struct.*, A.A. Baklema Publishers, Cachan, France, 2001: pp. 453–460.
- [34] D.M. 14/01/2008, Approvazione delle nuove norme tecniche per le costruzioni, (2008).
- [35] L. Binda, G. Mirabella Roberti, C. Tiraboschi, S. Abbaneo, Measuring Masonry Material Properties, in: D. Abrams, G.M. Calvi (Eds.), *U.S.-Italy Work. Guidel. Seism. Eval. Rehabil. Unreinforced Mason. Build.*, Pavia, Italy, 1994: pp. 326–347.
- [36] L. Binda, G. Fontana, G. Frigerio, Mechanical behaviour of brick masonries derived from units and mortar

- characteristics, in: 8th Int. Brick Block Mason. Conf., Dublin, 1988: pp. 205–216.
- [37] B.A. Güney, Development of Pozzolanic Lime Mortars for the Repair of Historic Masonry, Middle East Technical University, 2012.
- [38] V. Nežerka, Z. Slížková, P. Tesárek, T. Plachý, D. Frankeová, V. Petráňová, Comprehensive study on mechanical properties of lime-based pastes with additions of metakaolin and brick dust, *Cem. Concr. Res.* 64 (2014) 17–29. doi:10.1016/j.cemconres.2014.06.006.
- [39] CEN, EN 1015-11:2007 Methods of test for mortar for masonry - Part 11: Determination of flexural and compressive strength of hardened mortar, (2007).
- [40] C. Mazzotti, E. Sassoni, G. Pagliai, Determination of shear strength of historic masonries by moderately destructive testing of masonry cores, *Constr. Build. Mater.* 54 (2014) 421–431. doi:10.1016/j.conbuildmat.2013.12.039.
- [41] Z.P. Bažant, Concrete fracture models: testing and practice, *Eng. Fract. Mech.* 69 (2002) 165–205. doi:10.1016/S0013-7944(01)00084-4.
- [42] K. Chaimoon, M.M. Attard, Shear fracture in masonry joints, in: C.A. Brebbia (Ed.), 12th Int. Conf. Comput. Methods Exp. Meas., WIT Press, Malta, 2005: pp. 205–215.
- [43] N. Augenti, F. Parisi, Constitutive modelling of tuff masonry in direct shear, *Constr. Build. Mater.* 25 (2011) 1612–1620. doi:10.1016/j.conbuildmat.2010.10.002.
- [44] Z.P. Bažant, P.C. Prat, M.R. Tabbara, Antiplane Shear Fracture Tests (Mode III), *ACI Mater. J.* 87 (1990) 12–19.
- [45] V. Nežerka, J. Zeman, J. Němeček, Micromechanics-based simulations of compressive and tensile testing on lime-based mortars, *Mech. Mater.* 105 (2017) 49–60. doi:10.1016/j.mechmat.2016.11.011.
- [46] EN 1015-1:1999, Methods of test for mortar for masonry - Part 1: Determination of particle size distribution (by sieve analysis), (2007).
- [47] EN 12390-1:2000, Testing hardened concrete - Part 1: Shape, dimensions and other requirements for specimens and moulds, (2000).
- [48] Circolare 02/02/2009 n. 617, Istruzioni per l'applicazione delle "Norme tecniche per le costruzioni" di cui al D.M. 14 gennaio 2008, (2009).

Appendix A: Experimental data for the calibration of the TPT

A.1 Experimental campaign at UNIBO

The experimental program was based on the construction of a large set of cubic specimens of mortar. The samples were prepared using different compositions in order to obtain a representative range of compressive strengths. The manufacture was carried out in the Laboratory of Structural and Geotechnical Engineering of the University of Bologna (UNIBO), Italy.

Seven mixtures of mortar, properly designed in order to simulate different materials behaviour, were used to build the specimens. Each mixture was composed of different proportions of river sand ($0 \div 2$ mm grain size), Portland Cement 32.5 R, Natural Hydraulic Lime NHL 3.5 and water. The proportions among the components were carefully chosen by following the common practice in masonry construction, in order to obtain a statistically significant range of compressive strengths. The mass proportions of components for each mortar mixture are reported in Table A.1.

Mixtures “A” were characterised by a water/binder mass ratio of about 0.5-0.6, according to the standard mortar composition. On the contrary, mixtures “B” had water/binder ratio around 1.0, reducing significantly the compressive strength of the specimens. For each mortar mixture, three specimens were casted using $150 \times 150 \times 150$ mm³ PVC moulds. The samples were then stored for 28 days inside a climatic chamber (20°C and 98% RH). After the curing period, two holes were drilled in the centre of two opposite lateral surfaces of the samples. The faces selected for the penetrometric tests were those in contact with the moulds, granting the required planarity of the surfaces loaded during the compression test. The pilot hole was made by using a vertical drill with a hardened steel bit of 7 mm diameter. The pilot cavity was perfectly orthogonal to the investigated surface.

Table A.1 reports the readings of the TPT for each sample, expressed as normalised ultimate torque per unit length (m_v , in Nmm/mm) and the standard compressive strength (f_c , in MPa). Each value of

m_v reported for each sample is the average of the two readings obtained from the two opposite lateral surfaces of the cube specimen, see Figure 8. More details about the experimental results of this testing program can be found in [25].

Table A.1 – Mortar mixtures adopted in the experimental campaign at UNIBO [25], Torque Penetrometric Test results on cubic samples of mortar, normalised ultimate torque measured (m_v) and standard compressive strength (f_c).

Mix	NHL	Cem.	Sand	Water	Tot	m_v			f_c		
	[kg]	[kg]	[kg]	[kg]	[kg]	[Nmm/mm]			[MPa]		
						1	2	3	1	2	3
A1	5.0	-	15.0	3.0	23.0	350	433	333	1.31	1.43	1.33
A2	2.0	3.0	16.0	2.5	23.5	1067	1383	1250	8.55	8.68	8.52
A3	4.0	1.1	16.0	3.0	24.1	450	433	467	2.43	2.39	2.39
A4	3.5	2.5	15.0	2.7	23.7	1050	1250	1233	7.41	7.67	7.17
B2	3.4	-	18.0	3.0	24.4	167	217	-	0.45	0.46	-
B3	1.5	2.5	14.9	2.5	21.4	883	967	950	5.39	5.76	5.82
B4	1.0	1.5	18.0	2.5	23.0	367	517	500	1.82	1.78	1.81

A.2 Experimental campaign at DTI

The experimental program was developed at the Danish Technological Institute (DTI) by Christiansen [24] and used the X-Drill device. Several penetrometric tests were carried out on ten walls built in the laboratory and the results were compared with the compressive tests on mortar according to the available standards [39]. The mortar specimens were obtained by using premixed mortars with different parts of lime, cement, aggregates and water content in the mixture. The premixed mortars were classified in two categories: dry mixes (the water was entirely added during the moulding phase) and wet mixes (mortar contained water and additional cement or water were

added). The mortars were used to build 10 different walls with nominal mortar joint thickness of 12 mm. The tests were performed in the T-cross joints in order to reduce the risk of hitting the units.

Table A.2 reports the characteristics of mortars used in the different walls and the results of the standard compression test on the mortar specimens. Table A.2 also presents, for every specimen of given compressive strength, the Christiansen's original data (normalised ultimate torque measured with X-Drill $m_{v,XDrill}$) and their adjusted values ($m_{v,TPT}$) evaluated according to Equation 16.

Table A.2 - Mortar Mixtures used for the experimental campaign with the X-Drill at DTI [24], standard compressive strength of the specimens (f_c), normalised ultimate torque measured with X-Drill ($m_{v,XDrill}$) and adjusted values of the normalised ultimate torque to make possible the direct comparison with TPT readings ($m_{v,TPT}$).

Wall	Type	Dry/Wet	f_c [MPa]	$m_{v,X-drill}$ [Nmm/mm]	$m_{v,TPT}$ [Nmm/mm]
A	Design mortar	-	3.23	996	703
B	CL 40/60/850	WET	1.1	347	245
C	L 100/1200	WET	0.39	153	108
D	CL 50/50/700	DRY	4.99	1134	801
E	Design mortar	-	2.84	945	667
F	CL 40/60/850	WET	1.48	393	278
G	CL 40/60/850	WET	1.38	511	361
H	L 100/1200	WET	0.34	96	68
I	L 100/1200	WET	0.57	98	69
J	L 100/1200	DRY	0.4	175	124