



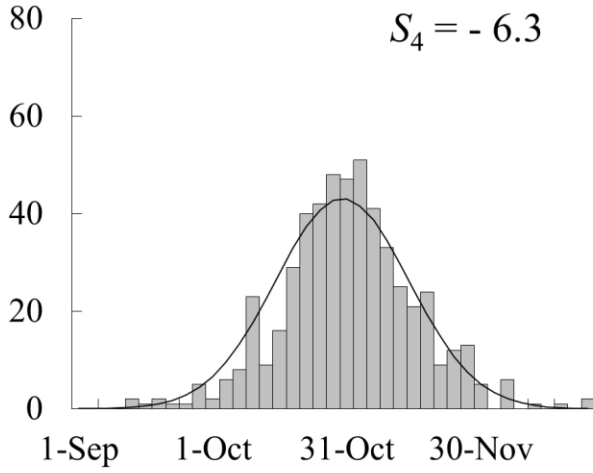
Title	Socially induced reproductive synchrony in a salmonid: an approximate Bayesian computation approach
Author(s)	Koizumi, Itsuro; Shimatani, Ichiro K.
Citation	Behavioral ecology, 27(5), 1386-1396 <a href="https://doi.org/10.1093/beheco/arw056">https://doi.org/10.1093/beheco/arw056</a>
Issue Date	2016
Doc URL	<a href="http://hdl.handle.net/2115/66985">http://hdl.handle.net/2115/66985</a>
Rights	This is a pre-copyedited, author-produced version of an article accepted for publication in Behavioral Ecology following peer review. The version of record Behavioral Ecology, Volume 27, Issue 5, 1 January 2016, Pages 1386–1396 is available online at: <a href="https://doi.org/10.1093/beheco/arw056">https://doi.org/10.1093/beheco/arw056</a> .
Type	article (author version)
Additional Information	There are other files related to this item in HUSCAP. Check the above URL.
File Information	Figure-final.pdf



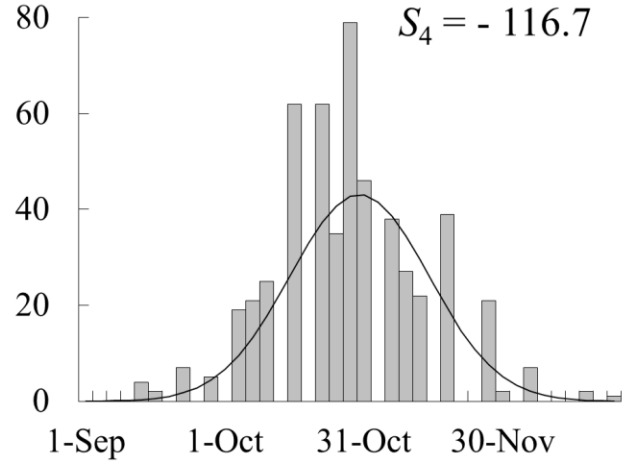
[Instructions for use](#)

Fig. 1

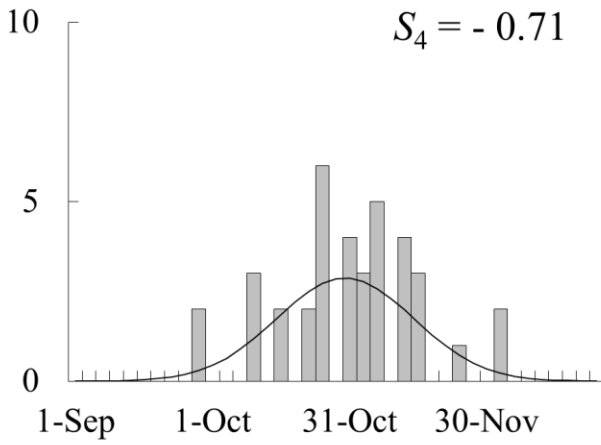
(a) No synchrony, 300 females



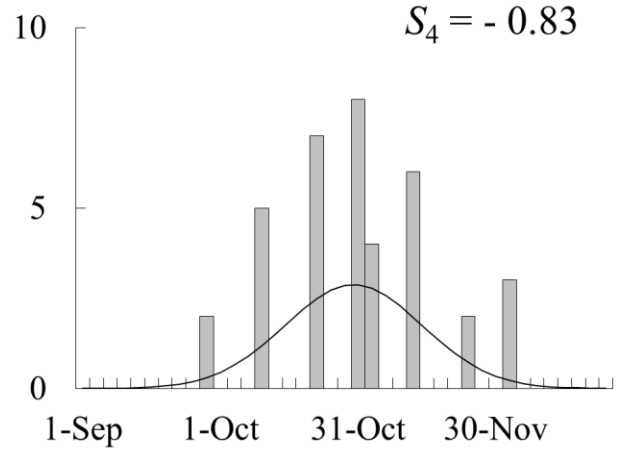
(b) Synchrony, 300 females



(c) No synchrony, 20 females



(d) Synchrony, 20 females



Date

Fig. 2

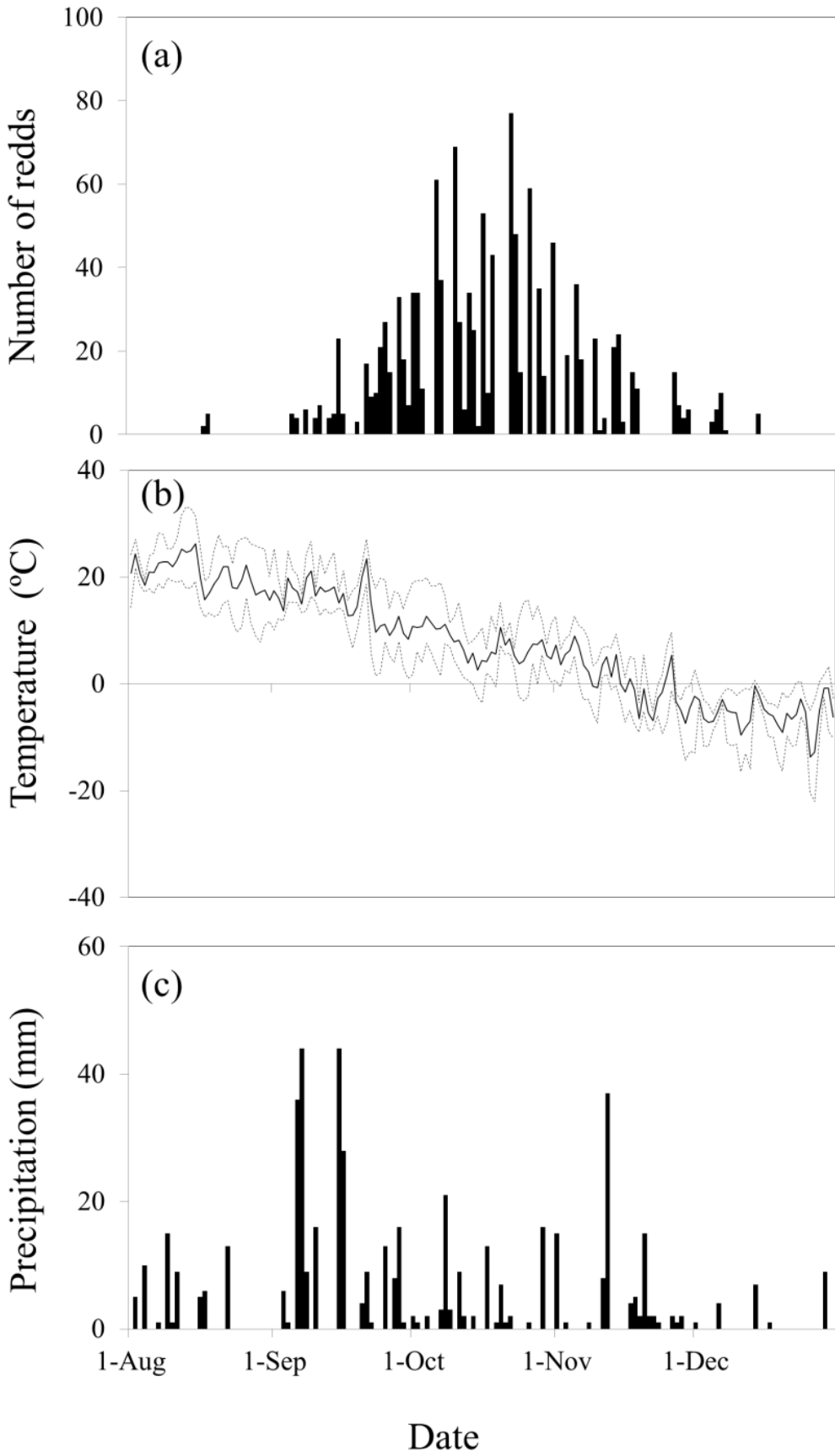


Fig. 3

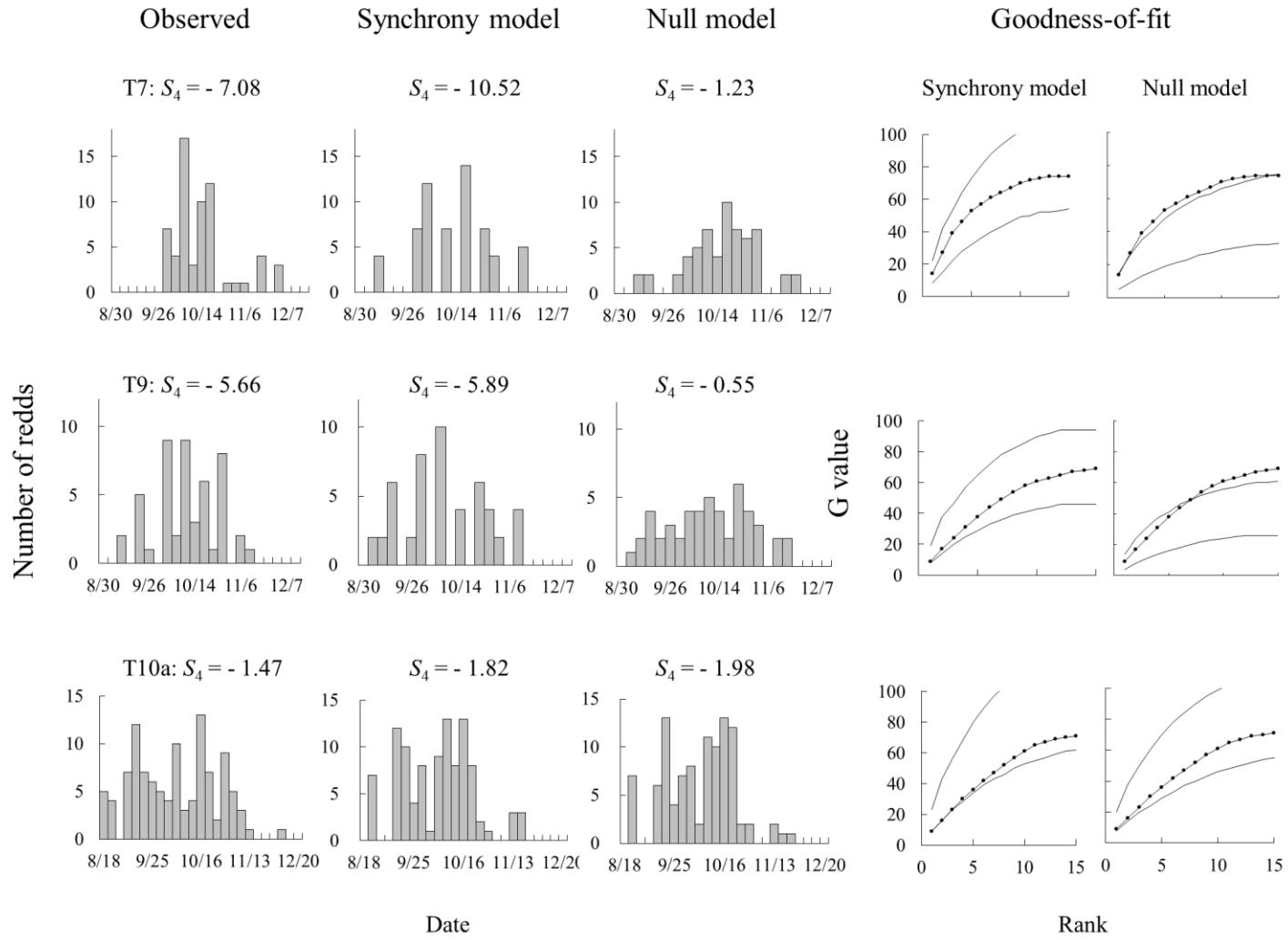


Fig.4

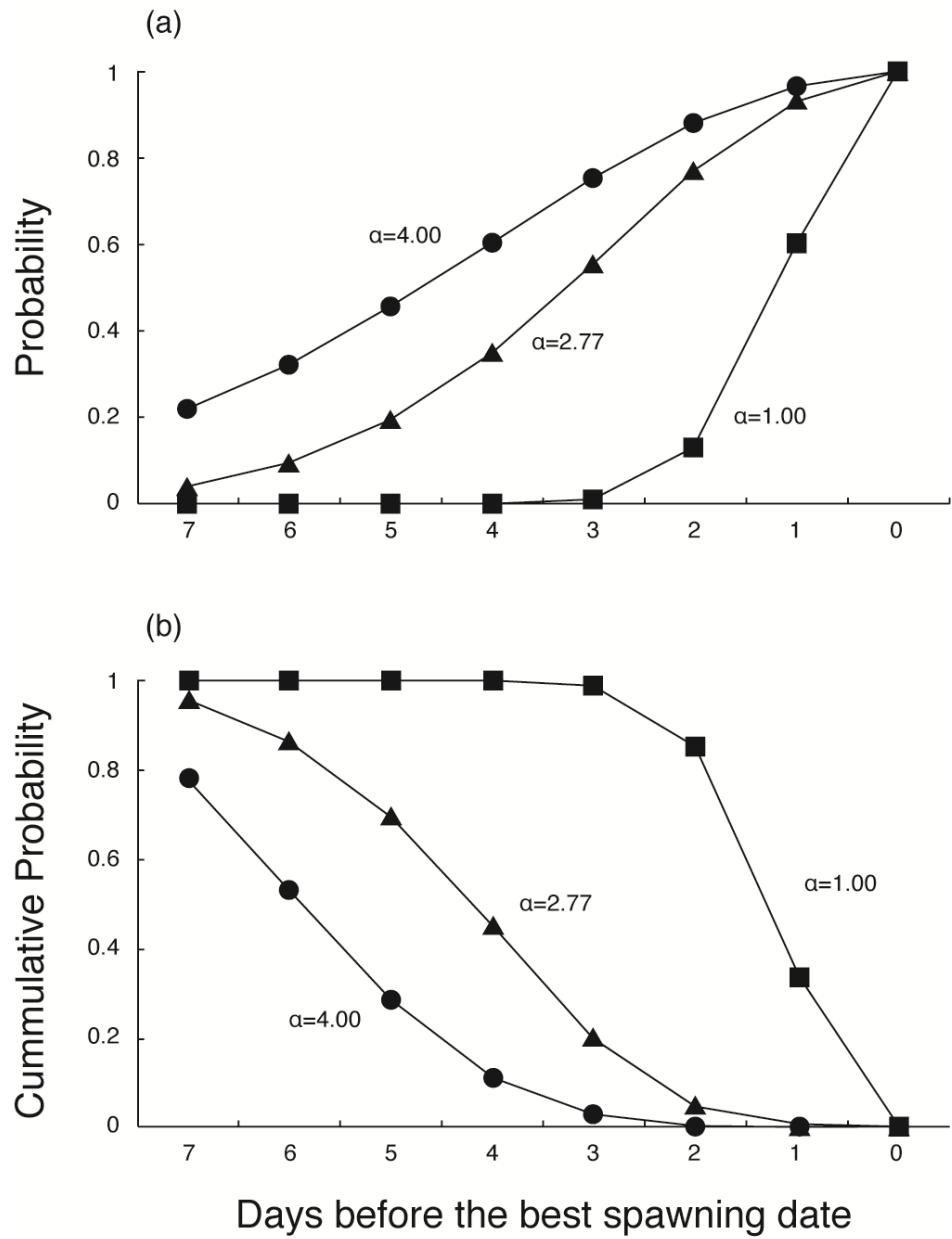


Fig.5

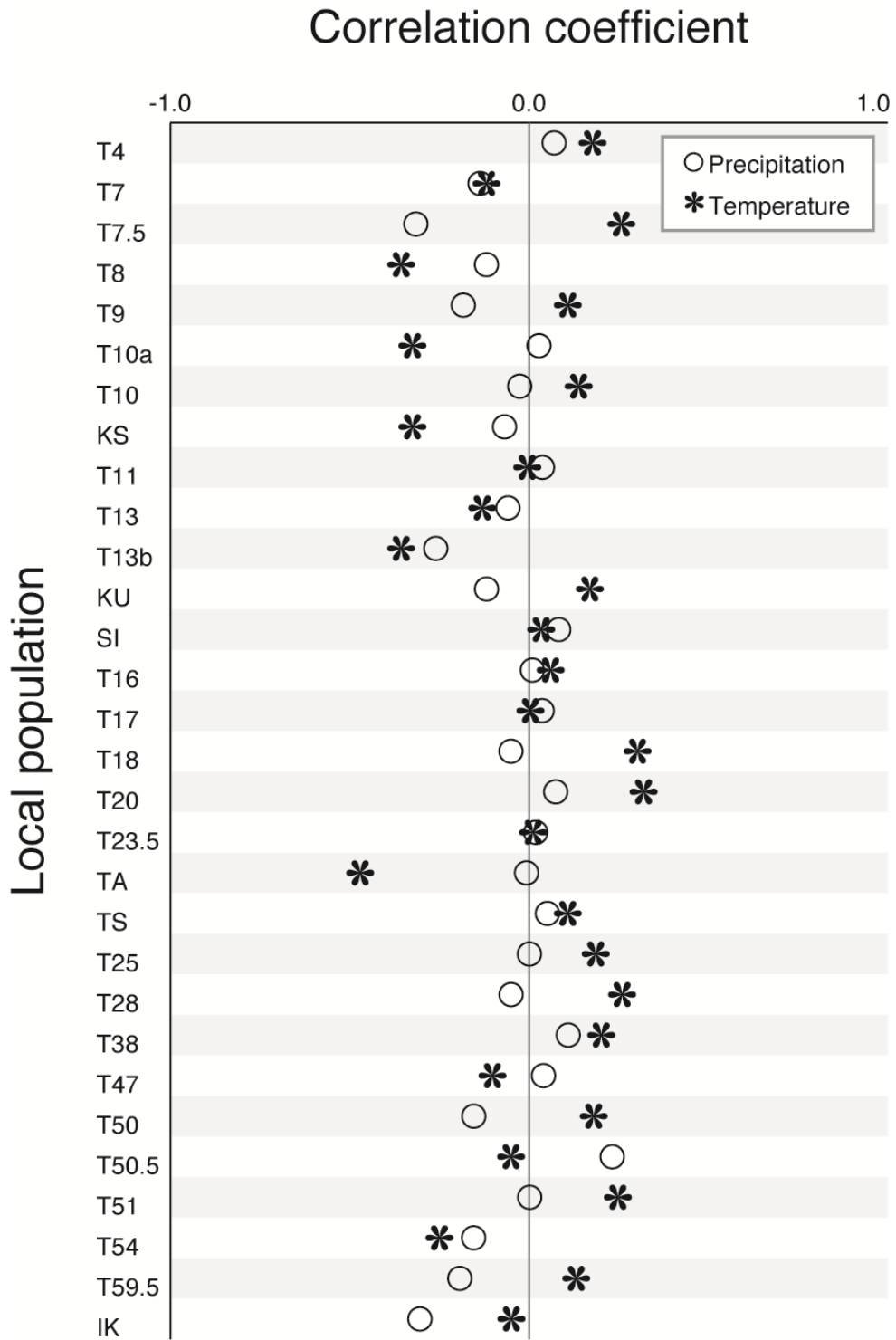


Fig.6

