



---

Year: 2017

---

## Long-term follow-up of pulmonary function in Fabry disease: A bi-center observational study

Franzen, Daniel P; Nowak, Albina; Haile, Sarah R; Mottet, Dominique; Bonani, Marco; Dormond, Olivier; Kohler, Malcolm; Krayenbuehl, Pierre A; Barbey, Frederic

**Abstract:** INTRODUCTION: Fabry disease (FD) is a lysosomal storage disorder leading to decreased -galactosidase A enzyme activity and subsequent abnormal accumulation of glycosphingolipids in various organs. Although histological evidence of lung involvement has been demonstrated, the functional impact of these changes is less clear. MATERIALS AND METHODS: Adult patients with FD who had yearly pulmonary function tests (PFT) at two centers from 1999 thru 2015 were eligible for this observational study. Primary outcome measures were the change in forced expiratory volume in the first second (FEV1) and FEV1/FVC over time. As secondary outcome we investigated sex, smoking, enzyme replacement therapy (ERT), residual enzyme activity, and Mainz Severity Score Index as possible predictors. RESULTS: 95 patients (41% male,  $38.2 \pm 14.5$  years) were included. The overall prevalence of bronchial obstruction (BO, (FEV1/FVC < 70%)) was 46%, with male sex, age and smoking as significant predictors. FEV1 decreased 29 ml per year (95% CI -36, -22 ml,  $p < 0.0001$ ). FEV1 decline was significantly higher in males ( $p = 0.009$ ) and in patients on ERT ( $p = 0.004$ ). Conclusion: Pulmonary involvement seems to be a relevant manifestation of Fabry disease, and routine PFTs should therefore be included in the multidisciplinary follow-up of these patients.

DOI: <https://doi.org/10.1371/journal.pone.0180437>

Posted at the Zurich Open Repository and Archive, University of Zurich

ZORA URL: <https://doi.org/10.5167/uzh-138561>

Published Version



Originally published at:

Franzen, Daniel P; Nowak, Albina; Haile, Sarah R; Mottet, Dominique; Bonani, Marco; Dormond, Olivier; Kohler, Malcolm; Krayenbuehl, Pierre A; Barbey, Frederic (2017). Long-term follow-up of pulmonary function in Fabry disease: A bi-center observational study. PLoS ONE, 12(7):e0180437.

DOI: <https://doi.org/10.1371/journal.pone.0180437>

RESEARCH ARTICLE

# Long-term follow-up of pulmonary function in Fabry disease: A bi-center observational study

Daniel P. Franzen<sup>1\*</sup>, Albina Nowak<sup>2</sup>, Sarah R. Haile<sup>3</sup>, Dominique Mottet<sup>2</sup>, Marco Bonani<sup>4</sup>, Olivier Dormond<sup>5</sup>, Malcolm Kohler<sup>1</sup>, Pierre A. Krayenbuehl<sup>6</sup>, Frederic Barbey<sup>7</sup>

**1** Department of Pulmonology, University Hospital Zurich, Zurich, Switzerland, **2** Department of Internal Medicine, University Hospital Zurich, Zurich, Switzerland, **3** Epidemiology, Biostatistics and Prevention Institute, Epidemiology Department, University of Zurich, Zurich, Switzerland, **4** Department of Nephrology, University Hospital Zurich, Zurich, Switzerland, **5** Department of Visceral Surgery, Lausanne University Hospital, Lausanne, Switzerland, **6** Department of Internal Medicine, Linth Hospital, Uznach, Switzerland, **7** Transplantation Centre, Lausanne University Hospital, Lausanne, Switzerland

☞ These authors contributed equally to this work.

\* [daniel.franzen@usz.ch](mailto:daniel.franzen@usz.ch)



**OPEN ACCESS**

**Citation:** Franzen DP, Nowak A, Haile SR, Mottet D, Bonani M, Dormond O, et al. (2017) Long-term follow-up of pulmonary function in Fabry disease: A bi-center observational study. PLoS ONE 12(7): e0180437. <https://doi.org/10.1371/journal.pone.0180437>

**Editor:** Raphael Schiffmann, Baylor Health Care System, UNITED STATES

**Received:** April 27, 2017

**Accepted:** May 18, 2017

**Published:** July 25, 2017

**Copyright:** © 2017 Franzen et al. This is an open access article distributed under the terms of the [Creative Commons Attribution License](https://creativecommons.org/licenses/by/4.0/), which permits unrestricted use, distribution, and reproduction in any medium, provided the original author and source are credited.

**Data Availability Statement:** All relevant data are within the paper and its Supporting Information files.

**Funding:** The study was supported by unrestricted research grants from Shire and Genzyme (Sanofi). The funders had no role in study design, data collection and analysis, decision to publish, or preparation of the manuscript.

**Competing interests:** The authors have declared that no competing interests exist.

## Abstract

### Introduction

Fabry disease (FD) is a lysosomal storage disorder leading to decreased  $\alpha$ -galactosidase A enzyme activity and subsequent abnormal accumulation of glycosphingolipids in various organs. Although histological evidence of lung involvement has been demonstrated, the functional impact of these changes is less clear.

### Materials and methods

Adult patients with FD who had yearly pulmonary function tests (PFT) at two centers from 1999 thru 2015 were eligible for this observational study. Primary outcome measures were the change in forced expiratory volume in the first second (FEV<sub>1</sub>) and FEV<sub>1</sub>/FVC over time. As secondary outcome we investigated sex, smoking, enzyme replacement therapy (ERT), residual enzyme activity, and Mainz Severity Score Index as possible predictors.

### Results

95 patients (41% male, 38.2 ± 14.5 years) were included. The overall prevalence of bronchial obstruction (BO, (FEV<sub>1</sub>/FVC < 70%)) was 46%, with male sex, age and smoking as significant predictors. FEV<sub>1</sub> decreased 29 ml per year (95% CI -36, -22 ml, p<0.0001). FEV<sub>1</sub> decline was significantly higher in males (p = 0.009) and in patients on ERT (p = 0.004). Conclusion: Pulmonary involvement seems to be a relevant manifestation of Fabry disease, and routine PFTs should therefore be included in the multidisciplinary follow-up of these patients.

## Introduction

Fabry disease is a rare X-linked lysosomal storage disorder due to mutations in the  $\alpha$ -galactosidase A gene (*GLA*) leading to deficiency or absence of  $\alpha$ -galactosidase A ( $\alpha$ -GAL) enzyme activity. The enzymatic defect results in abnormal accumulation of neutral glycosphingolipids, particularly globotriaosylceramide and galactosylceramide, in the plasma and in tissue lysosomes throughout the body. The lysosomal dysfunction triggers inflammation and fibrosis. Essentially, the cells of the vascular endothelium are the main target of this disease. Thus, perfusion of kidneys, heart, nervous system, and skin can be impaired [1]. However, direct damage from deposits in other cell types may also contribute to organ dysfunction, such as e.g. airways and lung [2, 3].

The first patient with Fabry disease described by the German dermatologist Johannes Fabry in 1898 was suffering from “bronchial asthma” with frequent respiratory tract infections and died in his early forties because of respiratory impairment [4]. Subsequently, pulmonary involvement has been considered to be a leading cause of death in Fabry disease [5]. In a recent Fabry disease outcome survey, it was stated that pulmonary involvement was related to one of 42 deaths in Fabry patients, suggesting that it rather contributes to morbidity than to mortality [6]. However, while histological evidence of pulmonary involvement has been demonstrated [7–11], the functional impact of these changes is still a matter of debate [12, 13], and therefore pulmonary involvement in Fabry disease is not uniformly acknowledged by all researchers in this field [3]. Furthermore, the effect of enzyme replacement therapy (ERT) on pulmonary involvement is only limited to a few reports revealing that it may stabilize the functional decline of the lung [11, 14]. Above all, there is a paucity of data on serial pulmonary function tests (PFTs) in Fabry patients. Therefore, the exact mechanism of a possible lung involvement is widely unknown. The purpose of this study was to demonstrate the course of serial PFTs in a considerably large patient cohort with Fabry disease, to characterize the pathophysiological mechanism, and to identify patients at risk of pulmonary involvement and deterioration.

## Material and methods

### Patients

The University Hospitals of Zurich and Lausanne, Switzerland are conducting a shared cohort including patients with genetically proven Fabry disease. This cohort has been established in 1999 when ERT was in development. The patients have at least one yearly follow-up examination at one of the two study centers. Along with PFTs, the follow-up examination contains a comprehensive workup including medical history (including cigarette smoking history), clinical examination, complete blood and urine panel (including blood count, blood and urine chemistry), cardiology/angiology work-up (including electrocardiography, echocardiography and vessel sonography), nephrology work-up (including sonography of the kidneys), neurology work-up (including cerebral magnetic resonance imaging) and an ophthalmological examination. Indication for ERT is discussed at a three-monthly interdisciplinary conference with participation of all involved disciplines. According to local guidelines, ERT is indicated in all males. In females, ERT is indicated if they have proteinuria of more than 300 mg per day, Fabry-typical kidney biopsy findings, signs of Fabry-related cardiopathy such as left ventricular hypertrophy or arrhythmia, stroke or transient ischemic attack, acro-paresthesia despite conventional analgesia, and/or gastrointestinal symptoms. ERT is prescribed at the licensed dose of either 0.2 mg/kg body weight of recombinant agalsidase- $\alpha$  (Replagal<sup>®</sup>) or 1 mg/kg body weight agalsidase- $\beta$  (Fabrazyme<sup>®</sup>) and given intravenously every 14 days.

All adult patients of this cohort who were treated and followed-up at one of these centers from 1999 thru 2015 were eligible for this retrospective, multi-center observational study. Patients with less than two PFTs were excluded from the study. The study was approved by the local Committees of Ethics of both hospitals (Ethics committee of the canton of Vaude, Lausanne, Switzerland, protocol 101/01; and Ethics committee of the canton of Zurich, Switzerland, KEK-ZH 2012–0115), and is registered at ClinicalTrials.gov (Identifier: NCT01632111).

## Pulmonary function test

Yearly PFTs included spirometry and measurement of diffusing capacity of the lung for carbon monoxide (DLCO). Both tests were performed according to performance standards based on the statements from the American Thoracic Society (ATS) and the European Respiratory Society (ERS) [15, 16] at the Departments of Pulmonology of one of the centers. Bronchial obstruction was defined according to the Global Initiative for Chronic Obstructive Lung Disease (GOLD) [17] and ATS/ERS guidelines on chronic obstructive lung disease (COPD) [18] suggest referring the forced expiratory volume in the first second (FEV<sub>1</sub>) to the forced (expiratory) vital capacity (FVC) with a fixed cut-off value of below 70%. Values of DLCO were adjusted for the patient's current hemoglobin value, and the patients were asked to withhold cigarette smoking at least four hours before PFT. Lung volumes and DLCO were measured with a commercial ZAN300 CO Diffusion system (nSpire Health GmbH, Oberthulba, Germany).

## Outcome measures

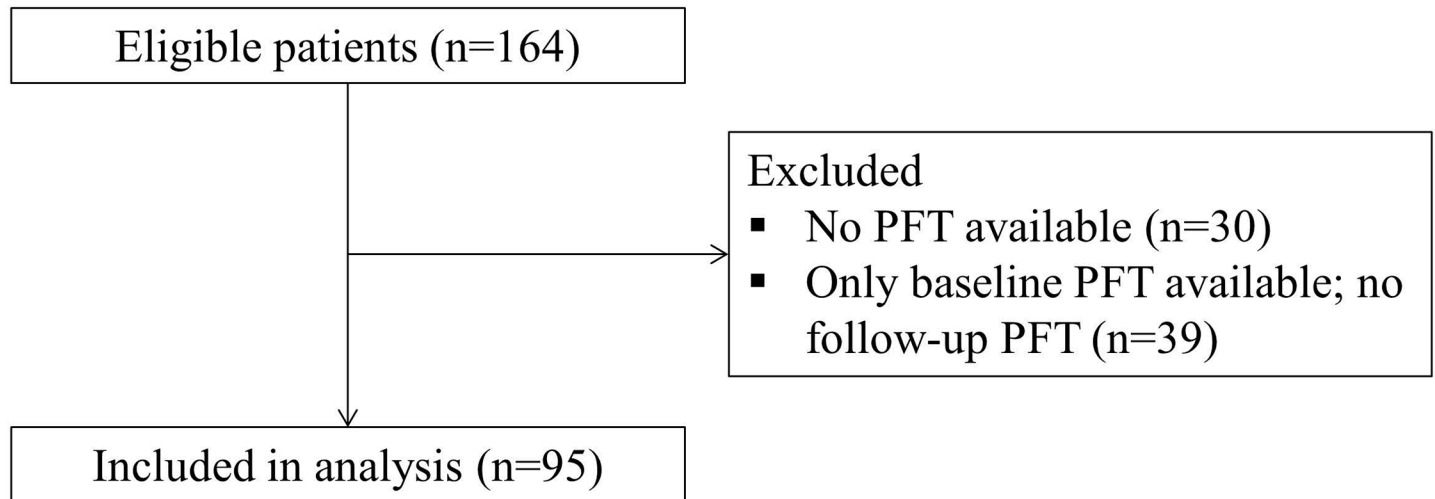
Primary outcome measures were the change in FEV<sub>1</sub>, FVC and DLCO over time, referring to the age of the patients. The secondary outcome measure was to investigate on possible predictors of pulmonary function changes over time. For this purpose, sex, cigarette smoking, ERT, residual  $\alpha$ -GAL activity, and Mainz Severity Score Index (MSSI) were assessed. The latter is a clinical scoring system to determine the severity of Fabry disease, considering general, neurological, cardiovascular, and renal abnormalities [19].

## Statistical analysis

Patient characteristics at baseline were summarized as n (%) or mean (SD), and compared using a chi-square test or ANOVA, respectively. Changes in lung function were examined graphically, as well as with linear mixed models. We considered a random intercept and slope for each patient, as well as random intercept and slope for each center. However, the results were quite similar, and therefore we report only the models with patient-specific random effects. P-values less than 0.05 were considered statistically significant. All analyses were performed in R (version 3.2.2) R Core Team (2013).

## Results

From 164 eligible patients, 95 patients (59% male) with at least two PFTs were included in the analysis (Fig 1). Baseline characteristics are displayed in Table 1. At baseline, the mean patient age was  $38.2 \pm 14.5$  years. Mean values of FEV<sub>1</sub>, FVC, and DLCO at baseline were above 80% predicted, and mean FEV<sub>1</sub>/FVC was above 70%. Thirteen patients (14%) had an obstructive lung disease. As expected, MSSI, residual  $\alpha$ -GAL activity, and spirometric values were significantly different between both sexes (Table 1).



**Fig 1. Patient flow chart.** PFT, pulmonary function test.

<https://doi.org/10.1371/journal.pone.0180437.g001>

### Changes of lung function over time

Of the 82 non-obstructive patients at baseline, 31 developed bronchial obstruction over time (Fig 2). Thus, overall 44 patients (46%) had bronchial obstruction at any time point. As expected, the proportion of pulmonary obstruction in males and smokers was higher. Interestingly, the slopes of the curves were almost parallel in males compared to females (Fig 3), and in smokers compared to non-smokers, respectively (Fig 4).

**Table 1. Baseline patient characteristics, n = 95.**

Variable	Male (n = 56)	Female (n = 39)	p-value	Total (n = 95)
Age, years	39.9 (14.0)	37.0 (14.8)	0.35	38.2 (14.5)
Age at ERT * begin, years	38.0 (14.7)	39.8 (14.8)	0.61	38.9 (14.7)
Body mass index, kg/m <sup>2</sup>	23.1 (3.9)	24.3 (4.8)	0.20	23.8 (4.5)
Current or former cigarette smoking	26 (72.2)	36 (67.9)	0.84	62 (69.7)
- Pack-years	21.3 (14.4)	12.1 (8.0)	0.04	15.7 (11.7)
MSSI <sup>  </sup>	23.1 (16.7)	11.2 (8.3)	<0.0001	16.1 (13.7)
Residual α-GAL <sup>†</sup> activity, %	8.6 (10.2)	53.2 (35.6)	<0.0001	41.5 (35.2)
FEV1 <sup>‡</sup> , litres	2.9 (0.8)	2.5 (0.5)	0.0029	2.7 (0.7)
FEV1 <sup>‡</sup> , % predicted	79.7 (18.2)	89.9 (16.1)	0.0052	85.7 (17.6)
FVC <sup>§</sup> , litres	4.1 (0.8)	3.2 (0.6)	<0.0001	3.6 (0.8)
FVC <sup>§</sup> , % predicted	91.6 (13.1)	99.1 (15.3)	0.02	96.1 (14.9)
FEV1/FVC, %	71.1 (11.2)	77.9 (7.8)	0.00075	75.1 (9.9)
DLCO <sup>**</sup> , % predicted	86.4 (20.3)	85.2 (12.1)	0.74	85.7 (15.6)

Values are presented as n (%) for categorical variables or mean (SD) for continuous variables.

<sup>†</sup> α-GAL, α-galactosidase A activity

<sup>\*\*</sup> DLCO, diffusing capacity of the lung for carbon monoxide

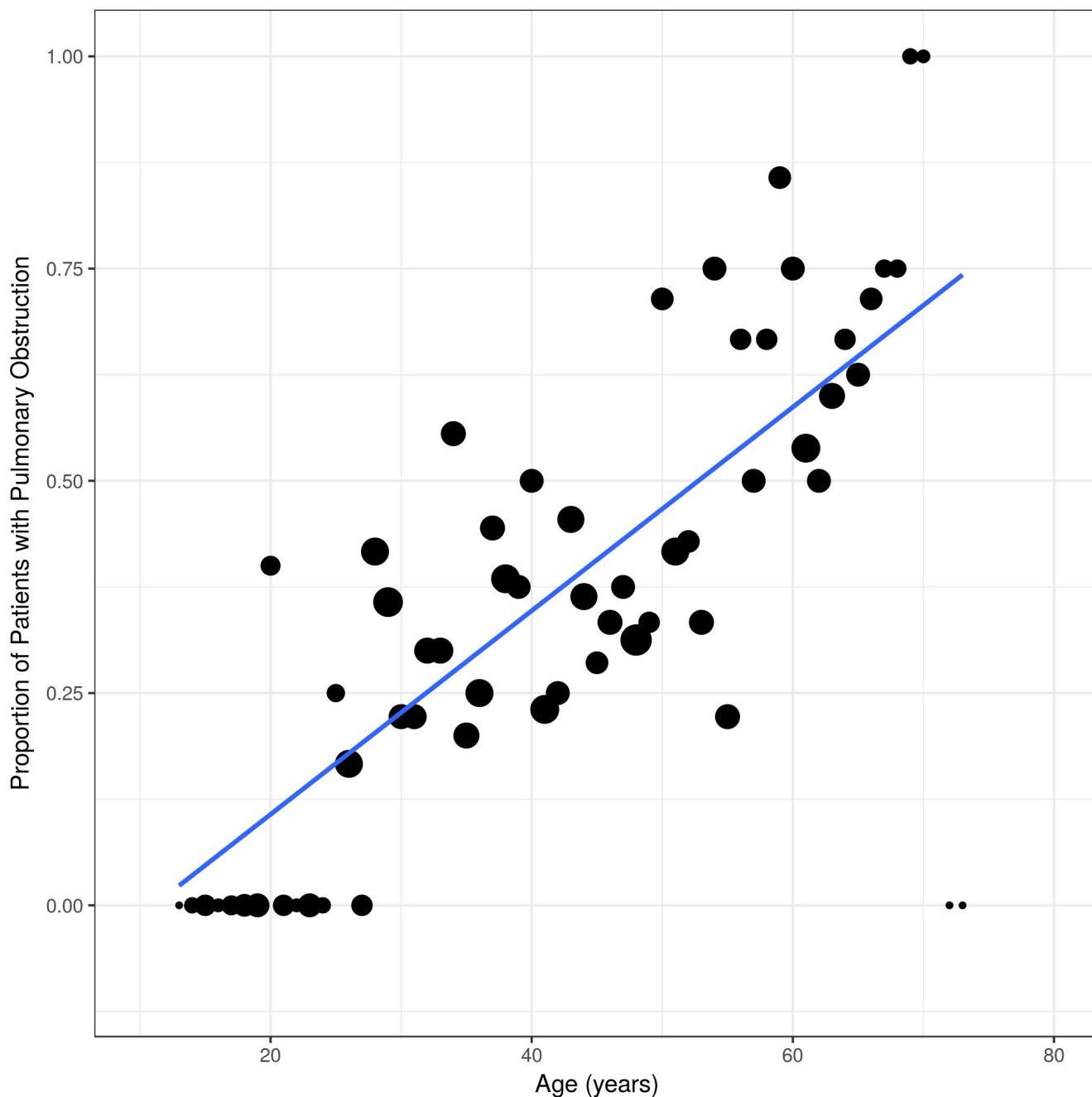
\* ERT, enzyme replacement therapy

<sup>‡</sup> FEV1, forced expiratory volume in the first second

<sup>§</sup> FVC, forced (expiratory) vital capacity

<sup>||</sup> MSSI, Mainz Severity Score Index

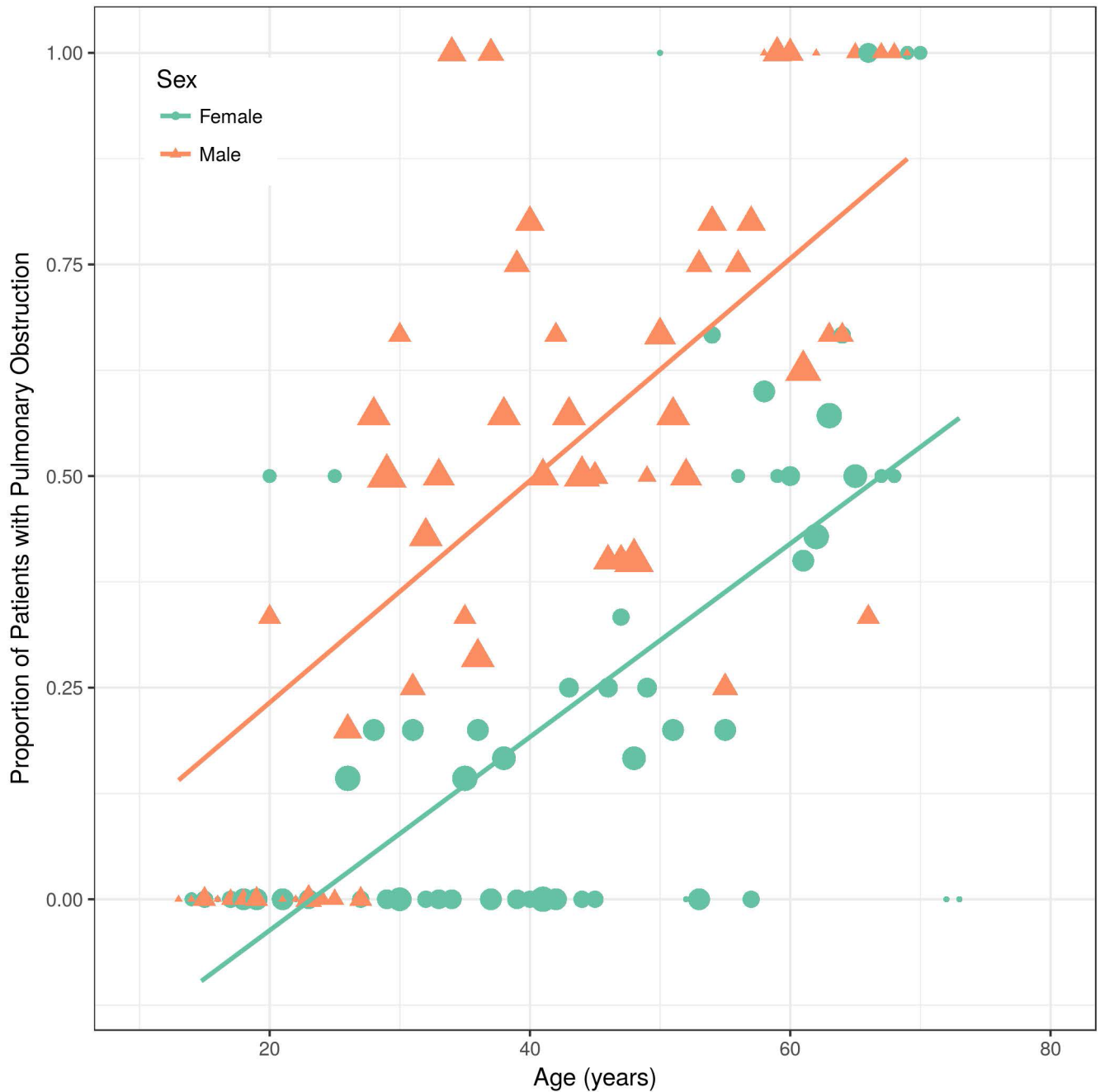
<https://doi.org/10.1371/journal.pone.0180437.t001>



**Fig 2. Proportion of Fabry patients with bronchial obstruction over time.** All values on y-axis are presented as percentage of patients with bronchial obstruction which was defined as FEV<sub>1</sub>/FVC < 70%.

<https://doi.org/10.1371/journal.pone.0180437.g002>

Overall, FEV<sub>1</sub> decreased significantly over time (-29 ml per year, 95% CI -36 to -22 ml,  $p < 0.0001$ ). Compared to this, FVC decreased -20 ml per year (95% CI -29 to -11 ml,  $p < 0.0001$ ), and DLCO remained almost unchanged over time (-0.14% predicted per year, 95% CI -0.32, 0.03% predicted,  $p = 0.11$ ). The slopes over time of FEV<sub>1</sub>, FVC and DLCO in percent predicted values are illustrated in Fig 5, Fig 6 and Fig 7. The difference per additional year of age was -29 ml



**Fig 3. Proportion of Fabry patients with bronchial obstruction over time, divided by sex.** All values on y-axis are presented as percentage of patients with bronchial obstruction which was defined as FEV1/FVC < 70%.

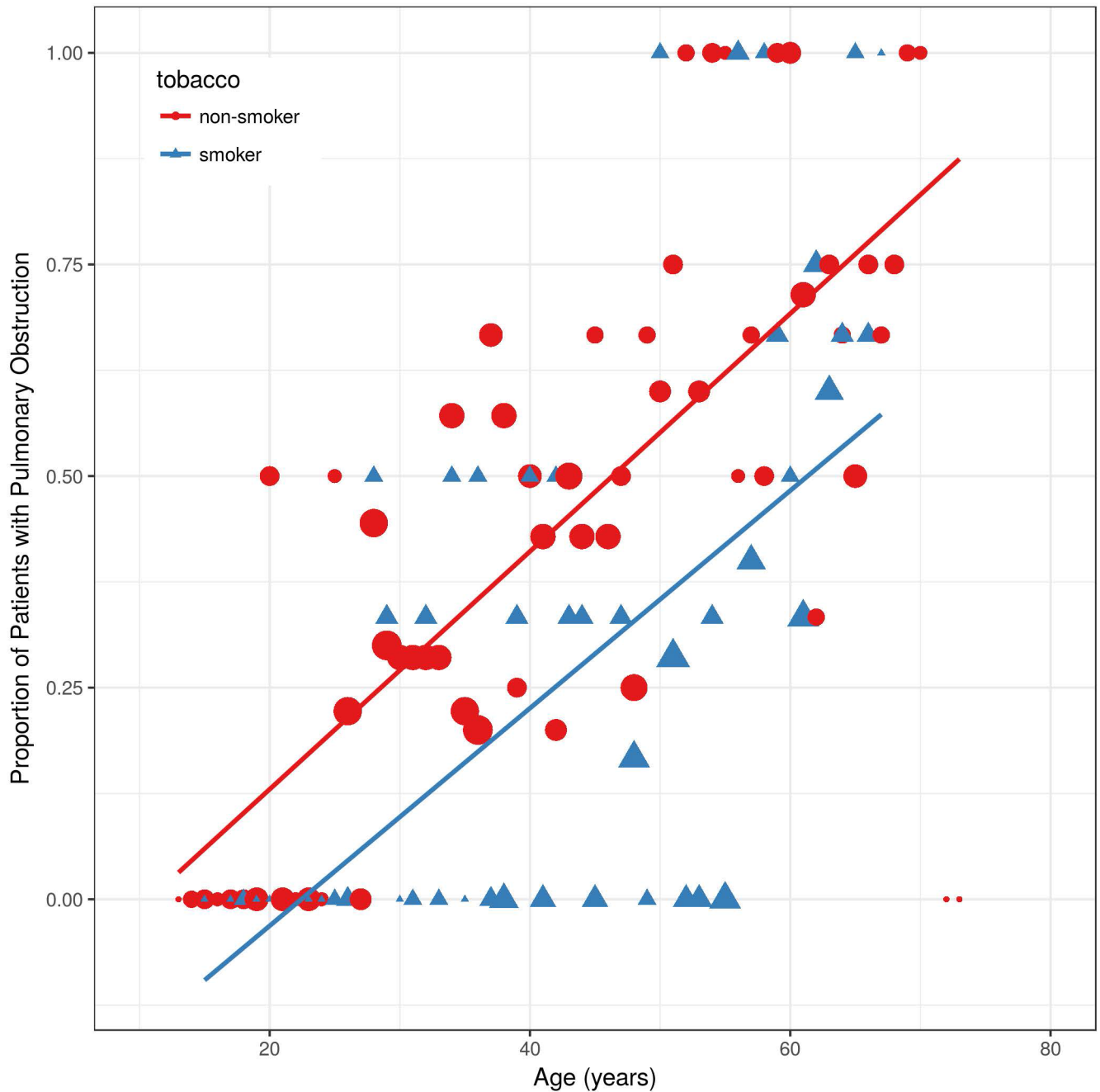
<https://doi.org/10.1371/journal.pone.0180437.g003>

(95% CI -36, -22 ml,  $p < 0.0001$ ), and the reduced to -8 ml per year after adjusting for sex, smoking, MSS1, baseline FEV1, enzyme activity and ERT, (95% CI -13, -3 ml,  $p = 0.007$ ).

### Risk factors for bronchial obstruction and FEV<sub>1</sub> decline

In the univariable analysis age, male sex, cigarette smoking, MSS1, and ERT were associated with pulmonary obstruction. However, only age, male sex, and smoking remained significant





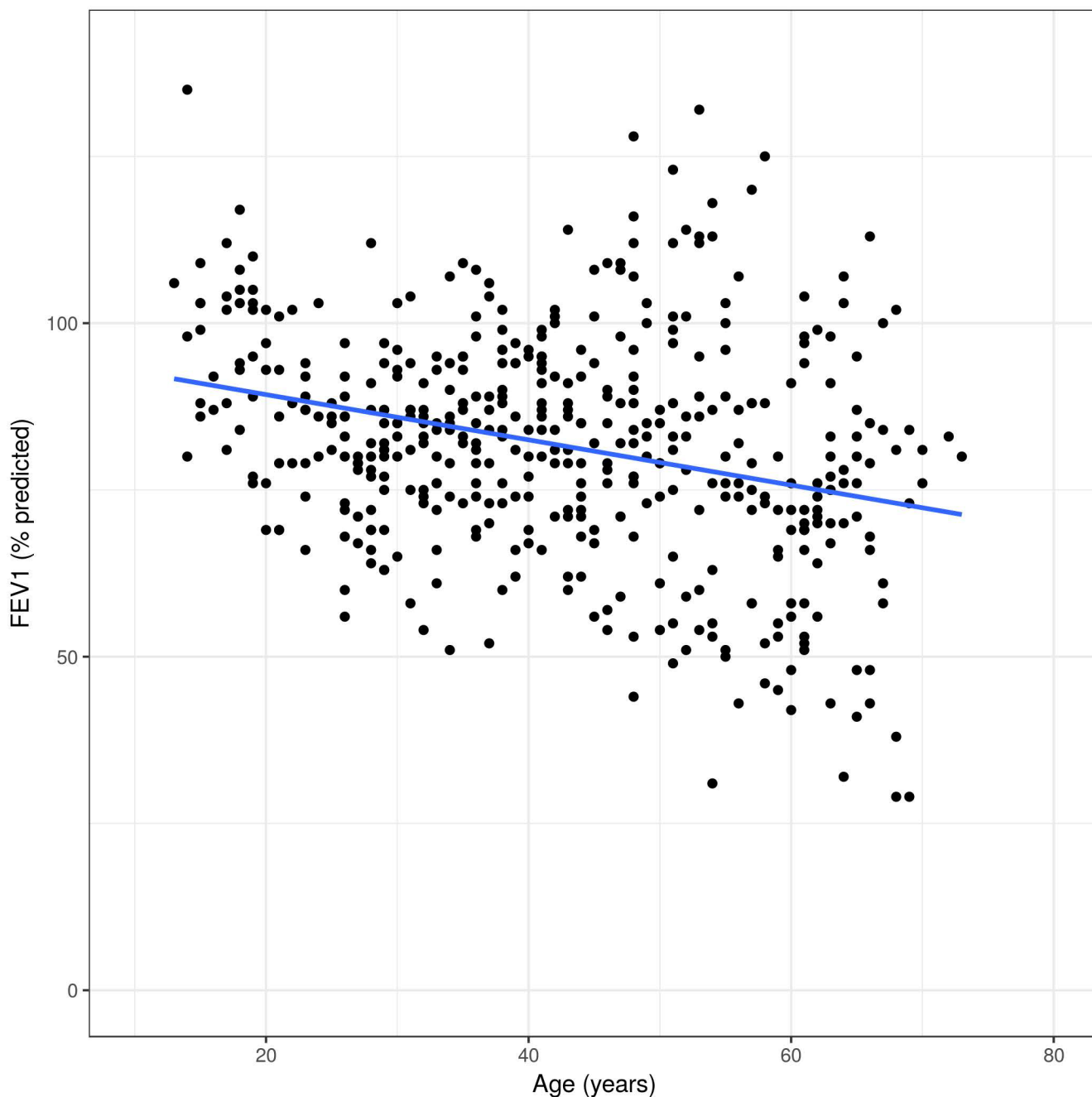
**Fig 4. Proportion of Fabry patients with bronchial obstruction over time, divided by cigarette smoking.** All values on y-axis are presented as percentage of patients with bronchial obstruction which was defined as FEV<sub>1</sub>/FVC < 70%.

<https://doi.org/10.1371/journal.pone.0180437.g004>

when considered together (Table 2). The unadjusted odds ratio for each additional year of age was 1.23 (95% CI 1.09, 1.39,  $p = 0.0008$ ), and almost the same even after adjusting for sex, smoking, MSS1, and ERT with 1.22 (95% CI 1.10, 1.34,  $p = 0.001$ ).

FEV<sub>1</sub> decline was significantly higher in male compared to female patients ( $p = 0.009$ ), and in patients on ERT compared treatment-naïve patients ( $p = 0.004$ ). Interestingly, FEV<sub>1</sub> slopes did not vary significantly by smoking and MSS1 (Table 3). Even when considering males only,





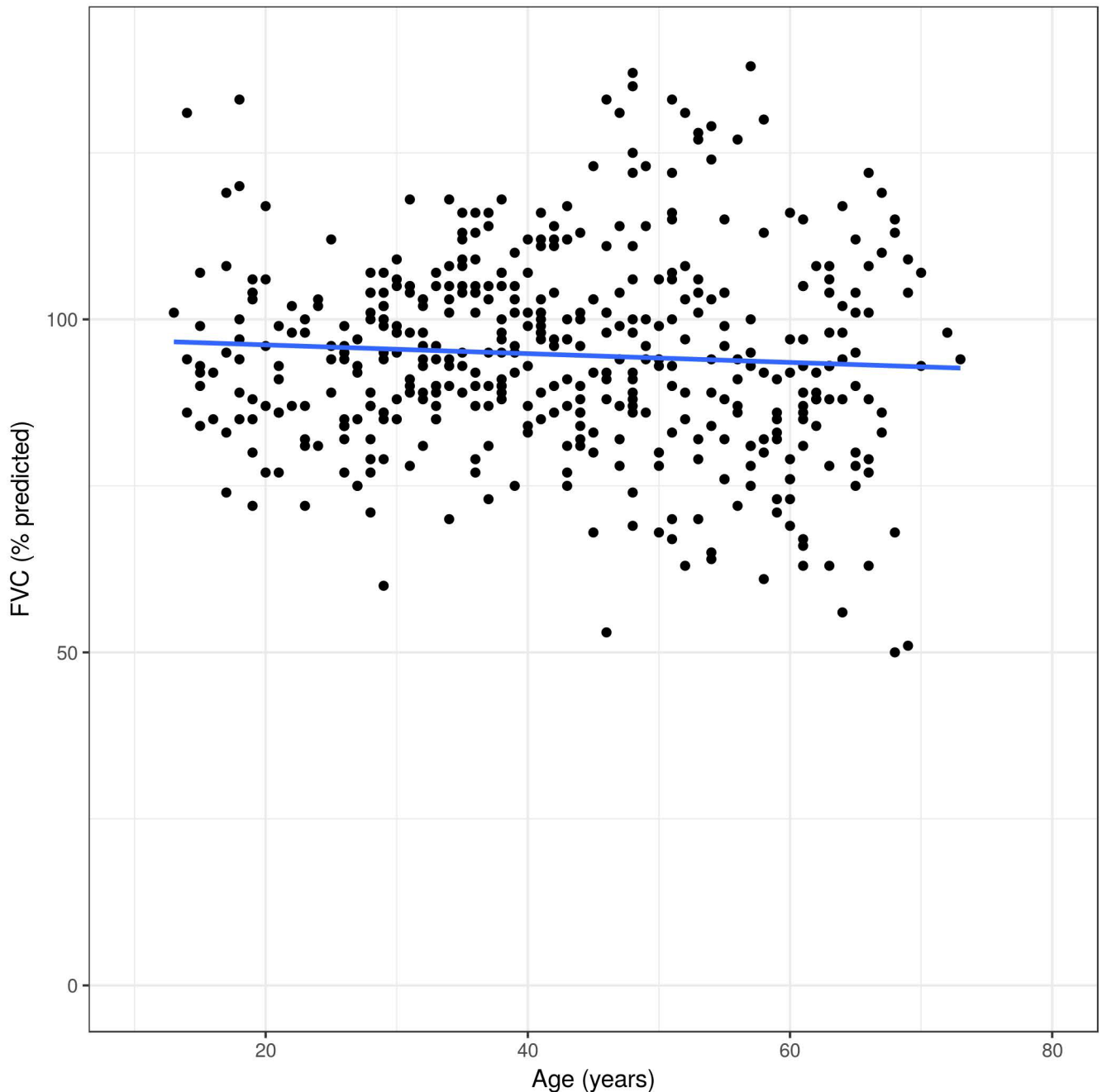
**Fig 5. Unadjusted FEV<sub>1</sub> changes in Fabry patients over time.** All measures on y-axis are displayed in percent of the predicted values.

<https://doi.org/10.1371/journal.pone.0180437.g005>

there was no significant difference in FEV<sub>1</sub> decline between smokers (-45ml (CI -65, -25ml)) and non-smokers (-41ml (CI -55, -27ml)),  $p = 0.67$ .

## Discussion

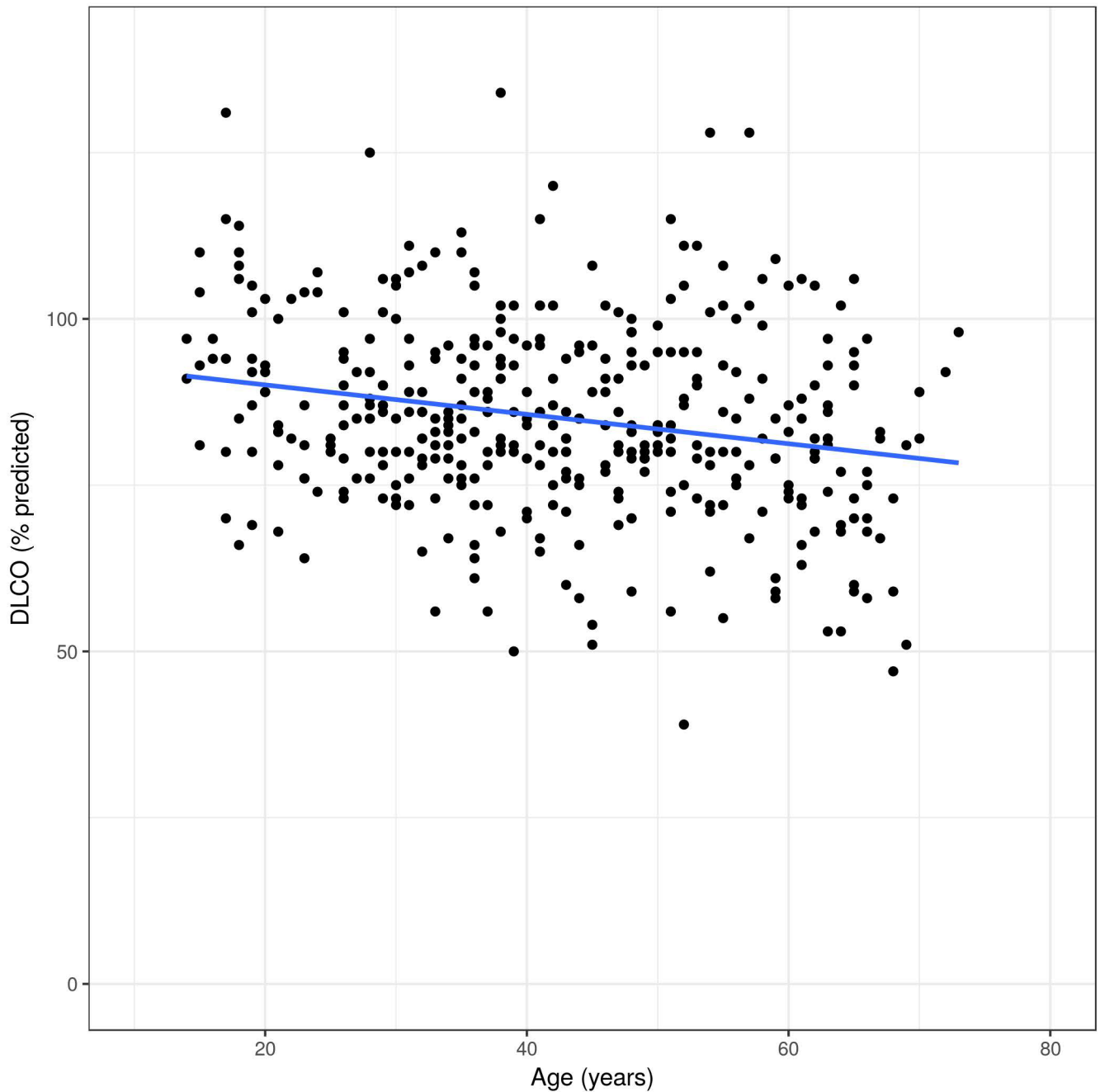
To date, this is the largest study analyzing the long-term follow-up of pulmonary function in Fabry disease patients. Previously, the largest cohort study on pulmonary involvement in Fabry disease was published by Brown et al. describing 25 male Fabry disease patients of



**Fig 6. Unadjusted FVC changes in Fabry patients over time.** All measures on y-axis are displayed in percent of the predicted values.

<https://doi.org/10.1371/journal.pone.0180437.g006>

whom 36% were found to have bronchial obstruction [20]. In a recent review article by our group including 272 patients drawn from all reports on pulmonary involvement of Fabry disease, the prevalence of obstructive lung disease was 32% [3]. In the present study, the prevalence of bronchial obstruction was 46%. Notably, the prevalence of airflow obstruction in the general random population in a comparable age group in Switzerland is estimated 0.9% in women and 3.4% in men [21]. Yet, the prevalence of COPD in the general population ranges between 5.1% and 16.7% in women, and 8.5% and 22.2% in men [22]. Thus, our results



**Fig 7. Unadjusted DLCO changes in Fabry patients over time.** All measures on y-axis are displayed in percent of the predicted values.

<https://doi.org/10.1371/journal.pone.0180437.g007>

underline a probably causative relationship between Fabry disease and bronchial obstruction, although no conclusion concerning the pathological mechanism is permissible based on our findings, since no lung biopsies had been taken. Yet, there are several reports suggesting that the progressive airway narrowing is due to accumulated glycosphingolipids in the peribronchial or peribronchiolar cells [8–11, 20]. According to the mechanism of endothelial dysfunction in cardiomyocytes and arterial smooth-muscle cells in Fabry patients, Wang et al. suggested that the pulmonary lysosomal accumulation of glycosphingolipids possibly leads to

**Table 2. Results of generalized linear mixed models for pulmonary obstruction with random intercept and slope for each patient.**

	Univariable analysis		Multivariable analysis	
	OR (95% CI)	p-value	OR (95% CI)	p-value
Age	1.23 (1.09–1.39)	0.0008	1.22 (1.08–1.39)	0.001
Male sex	86.80 (6.06–1242.78)	0.001	17.92 (1.28–251.64)	0.032
Smoking	51.80 (2.10–1277.70)	0.016	30.48 (1.58–586.72)	0.024
MSSI ‡	1.12 (1.00–1.25)	0.049	1.01 (0.92–1.10)	0.91
Residual α-GAL* activity	0.97 (0.93–1.01)	0.14		
ERT †	451.18 (8.19–24956.63)	0.003	148.55 (0.80–27496.70)	0.06

\* α-GAL, α-galactosidase A

†ERT, enzyme replacement therapy

‡MSSI, Mainz Severity Score Index

<https://doi.org/10.1371/journal.pone.0180437.t002>

small and medium airway disease via hyperplasia of the bronchial/bronchiolar smooth muscle cells and via insufficient smooth-muscle relaxation [10]. Thus, particularly early in the disease process, glycosphingolipid accumulation in the bronchiolar smooth muscle cells in Fabry disease may cause small airway disease [23, 24]. In line with this, increased residual volumes as a consequence of bronchiolar obstruction were observed in a cohort of Fabry patients without evidence of emphysema [20]. Since there are no reliable indicators of small airway disease in spirometry, and since we did not perform bodyplethysmographies in our patients, we are not able to confirm the latter finding.

Unexpectedly, the overall FEV<sub>1</sub> decline in our cohort of 29 ml per year is milder compared to the findings of others who stated a nonlinear progression of obstructive lung disease in Fabry disease with a yearly FEV<sub>1</sub> decline of 40 ml [24]. However, according to our findings, the decline was significantly faster in male patients compared to their female counterparts (38 vs. 20 ml). Interestingly, the FEV<sub>1</sub> decline in our study is comparable to healthy non-smoking individuals with a reported decline of 30–33 ml per year [25, 26]. And, compared to healthy smokers with a FEV<sub>1</sub> decline of 40–45 ml per year [25, 26] or COPD patients with 47–79 ml per year [27], the FEV<sub>1</sub> decline in Fabry disease patients is less severe than previously assumed. However, it has to be taken into account that a subset of male patients in our study is clearly more severely affected by Fabry disease, mirroring that it is characterized by considerably

**Table 3. Comparative FEV<sub>1</sub> slopes.**

	Slope FEV <sub>1</sub> *, ml (CI)	p-value
Male	-38 (-48, -27)	0.009
Female	-20 (-30, -11)	
Smoker	-33 (-47, -19)	
Non-smoker	-29 (-38, -20)	0.60
ERT†	-31 (-39, -24)	
ERT† naive	23 (-32, -14)	0.004
MSSI‡, 0–20 points	-28 (-38, -17)	
MSSI‡, 20–40 points	-31 (-46, -15)	0.33
MSSI‡, 40–60 points	-41 (-73, -10)	

†ERT, enzyme replacement therapy

\* FEV<sub>1</sub>, forced expiratory volume in first second

‡MSSI, Mainz Severity Score Index

<https://doi.org/10.1371/journal.pone.0180437.t003>

heterogeneous phenotypes. FEV<sub>1</sub> decline in those patients is exceeding 40 ml per year, but appropriate tools to prospectively identify these severely affected patients in consideration of pulmonary involvement are lacking. Accordingly, MSSSI was not associated with FEV<sub>1</sub> decline in this study.

Compared to others, the impact of smoking on FEV<sub>1</sub> decline in Fabry disease seems to be less clear [20, 28]. A possible explanation for these conflicting results could be due to heterogeneity of the reported cohorts. The subjects included in the cohort by Aubert et al. [28] were younger compared to the cohort reported by Brown et al. [20].

Interestingly, FEV<sub>1</sub> decline was not improved by ERT, though ERT seems to be an indicator of marked disease severity. A possible reason for this observation could be that the initiation of ERT was relatively late. Hence, a high proportion of the patients could already have had bronchial/bronchiolar glycosphingolipid depositions, and early initiation of ERT might have prevented pulmonary disease progression. Regarding the efficacy of ERT on heart and kidney involvement, there is a probable decelerating effect on disease progression, when started prior to the onset of fibrosis [29–31]. However, there are still a lot of open questions in terms of initiation and duration of ERT, dosage, and the clinical relevance of the various endpoints used in the trials [32]. Furthermore, there are only limited and conflicting data on the effect of ERT on pulmonary function. In two small retrospective studies, ERT has been reported to stabilize or even ameliorate the burden of pulmonary involvement in Fabry disease, mainly bronchial obstruction and/or sleep apnea [10, 14]. Opposed to this, in one small retrospective cross-sectional case series of 15 Fabry disease patients no significant lung function changes were observed in serial spirometries and DLCO measurements during a period of 15 months after initiation of ERT [33]. Our study was not specifically designed and powered to answer this question. Future prospective studies should include PFTs as pre-defined endpoints, and adjust the analysis for potential confounding factors (e.g. smoking) [3]. Further investigations should clarify whether early ERT initiation can preserve pulmonary function. Clinical trials are also warranted in order to elucidate if inhaled bronchodilators on top of ERT are effective in patients with Fabry disease-related pulmonary obstruction.

Several limitations of this study merit consideration. Firstly, we used the GOLD criterion that defines bronchial obstruction as a FEV<sub>1</sub>/FVC < 70% rather than z-scores, although the GOLD guidelines misidentify a relevant proportion of abnormal younger adults as normal [34, 35]. Thus, it is possible that the prevalence of bronchial obstruction in our cohort is even higher than reported. However, it was not possible to re-calculate all data, since some of them are several years old, and, comparison to older references is more accurate by using the GOLD criterion. Secondly, interpretation of our findings concerning the therapy effects should take into account that our study is not randomized and lacks a placebo-controlled group.

## Conclusions

Pulmonary involvement seems to be a relevant, but underestimated manifestation of Fabry disease, and routine PFTs should therefore be included in the multidisciplinary follow-up of these patients. However, additional studies are needed to investigate appropriate tools to prospectively identify patients at risk for pulmonary involvement, and whether early diagnosis and treatment initiation may prevent pulmonary disease progression before the onset of advanced bronchial/bronchiolar changes due to glycosphingolipid depositions.

## Supporting information

**S1 File.**  
(XLSX)

## Author Contributions

- Conceptualization:** Daniel P. Franzen, Albina Nowak, Pierre A. Krayenbuehl, Frederic Barbey.
- Data curation:** Daniel P. Franzen, Albina Nowak, Dominique Mottet, Frederic Barbey.
- Formal analysis:** Daniel P. Franzen, Sarah R. Haile.
- Investigation:** Daniel P. Franzen, Albina Nowak, Pierre A. Krayenbuehl, Frederic Barbey.
- Methodology:** Daniel P. Franzen, Albina Nowak, Pierre A. Krayenbuehl, Frederic Barbey.
- Project administration:** Daniel P. Franzen, Albina Nowak.
- Resources:** Daniel P. Franzen, Albina Nowak, Marco Bonani.
- Supervision:** Daniel P. Franzen, Albina Nowak, Frederic Barbey.
- Validation:** Olivier Dormond, Malcolm Kohler.
- Visualization:** Daniel P. Franzen, Albina Nowak, Sarah R. Haile.
- Writing – original draft:** Daniel P. Franzen, Albina Nowak, Sarah R. Haile.
- Writing – review & editing:** Daniel P. Franzen, Albina Nowak, Sarah R. Haile, Dominique Mottet, Marco Bonani, Olivier Dormond, Malcolm Kohler, Pierre A. Krayenbuehl, Frederic Barbey.

## References

1. Zarate YA, Hopkin RJ. Fabry's disease. *Lancet*. 2008; 372(9647):1427–35. Epub 2008/10/23. [https://doi.org/10.1016/S0140-6736\(08\)61589-5](https://doi.org/10.1016/S0140-6736(08)61589-5) PMID: 18940466.
2. Franzen D, Gerard N, Bratton DJ, Wons A, Gaisl T, Sievi NA, et al. Prevalence and Risk Factors of Sleep Disordered Breathing in Fabry disease: A Prospective Cohort Study. *Medicine (Baltimore)*. 2015; 94(52):e2413. Epub 2015/12/31. <https://doi.org/10.1097/md.0000000000002413> PMID: 26717401.
3. Franzen D, Krayenbuehl PA, Lidove O, Aubert JD, Barbey F. Pulmonary involvement in Fabry disease: overview and perspectives. *Eur J Intern Med*. 2013; 24(8):707–13. Epub 2013/06/04. <https://doi.org/10.1016/j.ejim.2013.05.003> PMID: 23726861.
4. Fabry J. Zur Klinik und Aetiologie des Angiokeratoma. *Arch Dermatol*. 1916; 123 (suppl):294–307.
5. Sweeley CC. The metabolic basis of inherited diseases. In: Stanbury JB, Wyndaarden JB, Fredrickson DS, editors 1996; New York: McGraw-Hill Book Co.
6. Mehta A, Clarke JT, Giugliani R, Elliott P, Linhart A, Beck M, et al. Natural course of Fabry disease: changing pattern of causes of death in FOS—Fabry Outcome Survey. *J Med Genet*. 2009; 46(8):548–52. Epub 2009/05/29. <https://doi.org/10.1136/jmg.2008.065904> PMID: 19473999.
7. Bagdade JD, Parker F, Ways PO, Morgan TE, Lagunoff D, Eidelman S. Fabry's disease. A correlative clinical, morphologic, and biochemical study. *Lab Invest*. 1968; 18(6):681–8. Epub 1968/06/01. PMID: 5667865.
8. Smith P, Heath D, Rodgers B, Helliwell T. Pulmonary vasculature in Fabry's disease. *Histopathology*. 1991; 19(6):567–9. Epub 1991/12/01. PMID: 1786942.
9. Rosenberg DM, Ferrans VJ, Fulmer JD, Line BR, Barranger JA, Brady RO, et al. Chronic airflow obstruction in Fabry's disease. *Am J Med*. 1980; 68(6):898–905. Epub 1980/06/01. PMID: 6247911.
10. Wang RY, Abe JT, Cohen AH, Wilcox WR. Enzyme replacement therapy stabilizes obstructive pulmonary Fabry disease associated with respiratory globotriaosylceramide storage. *J Inherit Metab Dis*. 2008; 31 Suppl 2:S369–74. Epub 2008/10/22. <https://doi.org/10.1007/s10545-008-0930-x> PMID: 18937048.
11. Kelly MM, Leigh R, McKenzie R, Kamada D, Ramsdale EH, Hargreave FE. Induced sputum examination: diagnosis of pulmonary involvement in Fabry's disease. *Thorax*. 2000; 55(8):720–1. Epub 2000/07/19. PMID: 10899253; PubMed Central PMCID: PMC1745834. <https://doi.org/10.1136/thorax.55.8.720>
12. Bartimmo EE Jr., Guisan M, Moser KM. Pulmonary involvement in Fabry's disease: a reappraisal follow-up of a San Diego kindred and review of literature. *Am J Med*. 1972; 53(6):755–64. Epub 1972/12/01. PMID: 4264593.

13. Koskenvuo JW, Kantola IM, Nuutila P, Knuuti J, Parkkola R, Mononen I, et al. Cardiopulmonary involvement in Fabry's disease. *Acta Cardiol.* 2010; 65(2):185–92. Epub 2010/05/13. <https://doi.org/10.2143/AC.65.2.2047052> PMID: 20458826.
14. Kim W, Pyeritz RE, Bernhardt BA, Casey M, Litt HI. Pulmonary manifestations of Fabry disease and positive response to enzyme replacement therapy. *Am J Med Genet A.* 2007; 143(4):377–81. Epub 2007/01/30. <https://doi.org/10.1002/ajmg.a.31600> PMID: 17256799.
15. Miller MR, Hankinson J, Brusasco V, Burgos F, Casaburi R, Coates A, et al. Standardisation of spirometry. *Eur Respir J.* 2005; 26(2):319–38. Epub 2005/08/02. <https://doi.org/10.1183/09031936.05.00034805> PMID: 16055882.
16. Macintyre N, Crapo RO, Viegi G, Johnson DC, van der Grinten CP, Brusasco V, et al. Standardisation of the single-breath determination of carbon monoxide uptake in the lung. *Eur Respir J.* 2005; 26(4):720–35. Epub 2005/10/06. <https://doi.org/10.1183/09031936.05.00034905> PMID: 16204605.
17. Pauwels RA, Buist AS, Calverley PM, Jenkins CR, Hurd SS. Global strategy for the diagnosis, management, and prevention of chronic obstructive pulmonary disease. NHLBI/WHO Global Initiative for Chronic Obstructive Lung Disease (GOLD) Workshop summary. *Am J Respir Crit Care Med.* 2001; 163(5):1256–76. Epub 2001/04/24. <https://doi.org/10.1164/ajrccm.163.5.2101039> PMID: 11316667.
18. Celli BR, MacNee W. Standards for the diagnosis and treatment of patients with COPD: a summary of the ATS/ERS position paper. *Eur Respir J.* 2004; 23(6):932–46. Epub 2004/06/29. PMID: 15219010.
19. Whybra C, Kampmann C, Krummenauer F, Ries M, Mengel E, Miebach E, et al. The Mainz Severity Score Index: a new instrument for quantifying the Anderson-Fabry disease phenotype, and the response of patients to enzyme replacement therapy. *Clin Genet.* 2004; 65(4):299–307. Epub 2004/03/18. <https://doi.org/10.1111/j.1399-0004.2004.00219.x> PMID: 15025723.
20. Brown LK, Miller A, Bhuptani A, Sloane MF, Zimmerman MI, Schilero G, et al. Pulmonary involvement in Fabry disease. *Am J Respir Crit Care Med.* 1997; 155(3):1004–10. Epub 1997/03/01. <https://doi.org/10.1164/ajrccm.155.3.9116979> PMID: 9116979.
21. Bridevaux PO, Probst-Hensch NM, Schindler C, Curjuric I, Felber Dietrich D, Braendli O, et al. Prevalence of airflow obstruction in smokers and never-smokers in Switzerland. *Eur Respir J.* 2010; 36(6):1259–69. Epub 2010/04/24. <https://doi.org/10.1183/09031936.00004110> PMID: 20413537.
22. Buist AS, McBurnie MA, Vollmer WM, Gillespie S, Burney P, Mannino DM, et al. International variation in the prevalence of COPD (the BOLD Study): a population-based prevalence study. *Lancet.* 2007; 370(9589):741–50. Epub 2007/09/04. [https://doi.org/10.1016/S0140-6736\(07\)61377-4](https://doi.org/10.1016/S0140-6736(07)61377-4) PMID: 17765523.
23. Bierer G, Kamangar N, Balfe D, Wilcox WR, Mosenifar Z. Cardiopulmonary exercise testing in Fabry disease. *Respiration.* 2005; 72(5):504–11. Epub 2005/10/08. <https://doi.org/10.1159/000087675> PMID: 16210890.
24. Magage S, Lubanda JC, Susa Z, Bultas J, Karetova D, Dobrovolny R, et al. Natural history of the respiratory involvement in Anderson-Fabry disease. *J Inherit Metab Dis.* 2007; 30(5):790–9. Epub 2007/07/11. <https://doi.org/10.1007/s10545-007-0616-9> PMID: 17619837.
25. Lee PN, Fry JS. Systematic review of the evidence relating FEV1 decline to giving up smoking. *BMC Med.* 2010; 8:84. Epub 2010/12/16. <https://doi.org/10.1186/1741-7015-8-84> PMID: 21156048; PubMed Central PMCID: PMC3017006.
26. Xu X, Dockery DW, Ware JH, Speizer FE, Ferris BG Jr., Effects of cigarette smoking on rate of loss of pulmonary function in adults: a longitudinal assessment. *Am Rev Respir Dis.* 1992; 146(5 Pt 1):1345–8. Epub 1992/11/11. [https://doi.org/10.1164/ajrccm/146.5\\_Pt\\_1.1345](https://doi.org/10.1164/ajrccm/146.5_Pt_1.1345) PMID: 1443894.
27. Tantucci C, Modena D. Lung function decline in COPD. *Int J Chron Obstruct Pulmon Dis.* 2012; 7:95–9. Epub 2012/03/01. <https://doi.org/10.2147/COPD.S27480> PMID: 22371650; PubMed Central PMCID: PMC3282601.
28. Aubert JD, Barbey F. Pulmonary involvement in Fabry disease. In: Mehta A, Beck M, Sunder-Plasmann G, editors. *Fabry Disease: Perspectives from 5 Years of FOS.* Oxford: Oxford PharmaGenesis; 2006.
29. Mehta A, Beck M, Elliott P, Giugliani R, Linhart A, Sunder-Plassmann G, et al. Enzyme replacement therapy with agalsidase alfa in patients with Fabry's disease: an analysis of registry data. *Lancet.* 2009; 374(9706):1986–96. Epub 2009/12/05. [https://doi.org/10.1016/S0140-6736\(09\)61493-8](https://doi.org/10.1016/S0140-6736(09)61493-8) PMID: 19959221.
30. Schiffmann R, Kopp JB, Austin HA, 3rd, Sabnis S, Moore DF, Weibel T, et al. Enzyme replacement therapy in Fabry disease: a randomized controlled trial. *Jama.* 2001; 285(21):2743–9. Epub 2001/06/21. PMID: 11386930.
31. El Dib R, Goma H, Carvalho RP, Camargo SE, Bazan R, Barretti P, et al. Enzyme replacement therapy for Anderson-Fabry disease. *Cochrane Database Syst Rev.* 2016; 7:CD006663. Epub 2016/07/28. <https://doi.org/10.1002/14651858.CD006663.pub4> PMID: 27454104.



32. Schiffmann R, Hughes DA, Linthorst GE, Ortiz A, Svarstad E, Warnock DG, et al. Screening, diagnosis, and management of patients with Fabry disease: conclusions from a "Kidney Disease: Improving Global Outcomes" (KDIGO) Controversies Conference. *Kidney Int.* 2017; 91(2):284–93. Epub 2016/12/22. <https://doi.org/10.1016/j.kint.2016.10.004> PMID: 27998644.
33. Barbey F, Widmer U, Brack T, Vogt B, Aubert JD. Spirometric abnormalities in patients with Fabry disease and effect of enzyme replacement therapy. *Acta Paediatr* 2005;Suppl. 447:105.
34. Hansen JE, Sun XG, Wasserman K. Spirometric criteria for airway obstruction: Use percentage of FEV1/FVC ratio below the fifth percentile, not < 70%. *Chest.* 2007; 131(2):349–55. Epub 2007/02/14. <https://doi.org/10.1378/chest.06-1349> PMID: 17296632.
35. Stanojevic S, Wade A, Stocks J. Reference values for lung function: past, present and future. *Eur Respir J.* 2010; 36(1):12–9. Epub 2010/07/03. <https://doi.org/10.1183/09031936.00143209> PMID: 20595163.