

Calystegine degradation capacities of microbial rhizosphere communities of *Zea mays* (calystegine-negative) and *Calystegia sepium* (calystegine-positive)

Daniel Guntli, Stéphane Burgos, Yvan Moënné-Loccoz¹, Geneviève Défago *

Phytopathology Group, Institute of Plant Sciences, Swiss Federal Institute of Technology (ETH), Universitätstr. 2, CH-8092 Zürich, Switzerland

Received 18 June 1998; received in revised form 23 September 1998; accepted 28 September 1998

Abstract

Calystegines are tropane alkaloids produced by the roots of a few plant species. A bioassay was developed to identify roots with a microbial rhizosphere community capable of calystegine degradation (i.e. MCD roots). In a field survey, the proportion of MCD roots of *Zea mays* (calystegine-negative) varied from 20 to 80%. In field experiments, the proportions of MCD roots of *Z. mays* and *Calystegia sepium* (calystegine-positive) grown in a particular plot were similar to each other but varied with time and, overall, were higher than those of *Z. mays* roots from adjacent plots free of *C. sepium*. In autoclaved soil, no root of *C. sepium* or *Z. mays* plants propagated as seeds was MCD, indicating that calystegine-degrading microorganisms were not seed-borne. However, MCD roots were found as early as 1 day after planting of rhizomes of *C. sepium* in autoclaved soil or planting of axenic seedlings of either plant in natural soil microcosms. In total, microorganisms capable of degrading calystegines were harboured not only in the rhizosphere of the calystegine-producing plant but also in that of the calystegine-negative plant and probably in bulk soil. © 1999 Federation of European Microbiological Societies. Published by Elsevier Science B.V. All rights reserved.

Keywords: Calystegine; Alkaloid; *Calystegia sepium*; *Zea mays*; Rhizosphere effect

1. Introduction

Calystegines are plant secondary metabolites and were first found in the roots of *Calystegia sepium* (L.) R.Br. (i.e. hedge bindweed, morning glory) [1]. Other plant species have also been reported to produce

these tropane alkaloids, e.g. *Atropa belladonna* L. and *Convolvulus arvensis* L. [1], *Hyoscyamus niger* L. [2], *Morus alba* L. [3], *Physalis alkengi* var. *francheti* L. [4], *Solanum tuberosum* L. and *Solanum melongena* L. [5]. Calystegines can be poisonous to arthropods [5] and mammals [6], presumably as a result of glycosidase inhibition [2,7]. Calystegines may also act as allelochemicals in interactions between plants [8].

Sinorhizobium meliloti strain Rm41 [1] and bacteria from a few other genera, including *Pseudomonas* [8,9], have been found to degrade calystegines. In

* Corresponding author. Tel.: +41 (1) 632 38 69; Fax: +41 (1) 632 11 08; E-mail: genevieve.defago@ipw.agrl.ethz.ch

¹ Present address: UMR CNRS d'Ecologie Microbienne du Sol, Université Claude Bernard (Lyon 1), 69622 Villeurbanne Cedex, France.

strain Rm41, the genes responsible for calystegine catabolism (*cac*) are harboured on the 225-kb self-transmissible, non-symbiotic plasmid pRme41a [1]. Subcloning revealed that the *cac* locus is spread over a region 30–40 kb in length [10]. Since *S. meliloti* Rm41 can use calystegines as a source of carbon and nitrogen for growth [9], it is thought that the genes encoding the catabolism of these alkaloids can contribute to strain survival during its saprophytic life, i.e. in the absence of the host plant alfalfa [10]. In accordance with this concept, Tepfer et al. [9] found calystegine-degrading bacteria in the rhizosphere of calystegine-producing plants but not in that of calystegine-negative plants, suggesting a role for calystegines as nutritional mediators in plant-microbe interactions.

Our understanding of the role of calystegines in the rhizosphere is based exclusively on the results of calystegine degradation tests performed with a limited number of isolates of rhizosphere bacteria only [8,9]. The microbial community of the rhizosphere is highly diverse and it is unlikely that determinations carried out with individual microorganisms could provide a full account of the role of calystegines in plant-microbe interactions. Therefore, the objective of this study was to reevaluate, this time at the microbial community level, the relationship between the ability of plants to produce calystegines and that of rhizosphere microorganisms to degrade calystegines. For this purpose, a new assay was developed to score the capacity of rhizosphere microbial communities to degrade calystegines purified from *C. sepium*. The assay requires the presence of calystegine-degrading microorganisms at significant population levels for a positive response.

2. Materials and methods

2.1. Plants

Seeds of *C. sepium* were collected in parks located in the city of Zürich (Switzerland), and those of *Z. mays* cv. Silex 170 were obtained from the Seeds Department of the Swiss Federal Research Station for Agroecology and Agriculture (FAL) at Zürich-Reckenholz. A culture of *C. sepium* roots transformed by *Agrobacterium rhizogenes* [11] was used

for the production of calystegines because the introduced T-DNA resulted in increased root biomass and alkaloid content. The transformed roots were cultivated in 65 ml of Gamborg B5 medium (Sigma, Buchs, Switzerland) in 300-ml Erlenmeyer flasks with continuous shaking (120 rpm) at 24°C in the dark for 3 weeks.

2.2. Purification of calystegines

The transformed roots were removed from liquid cultures, blotted dry and stored at –20°C prior to use. For extraction of calystegines, portions of about 5 g of roots were frozen in liquid N₂ and homogenised using a mortar and pestle. The samples were transferred into 1.5-ml Eppendorf tubes and centrifuged at 13 000×*g* for 40 min. To remove tannins and phenols, the supernatants (which contained about one third of the initial amount of plant material) were treated with 45% (w/v) neutral aluminium oxide 90 (E. Merck AG, Dietikon, Switzerland). The samples were mixed with acetonitrile in a 1:9 (v/v) ratio and passed through a LC-NH₂ solid phase extraction column (Supelco, Buchs, Switzerland) conditioned with 6 ml of acetonitrile solution (i.e. water:acetonitrile in a 1:9 ratio), to remove salts and ions. The column was washed with 3 ml of acetonitrile solution and elution was performed with 3 ml of 0.001 M HCl. The eluates were then passed through an ion exchange LC-SCX column (Supelco) conditioned with 6 ml of 0.001 M HCl to separate sugars. After washing the column with 3 ml of 0.001 M HCl, the column was rinsed with 2 M NH₃. The eluates were evaporated to dryness in vacuo and redissolved each in 250 µl of sterile distilled water.

2.3. Analysis of calystegines

The method of Dräger [12] for calystegine analysis was slightly modified to facilitate identification of the alkaloids. Samples (2 µl) were applied to a thin-layer chromatography plate (Kieselgel 60, Merck), which was developed in a solvent system consisting of CH₃OH, 0.6 M NH₄Cl and CH₃Cl in a 6:2:1 ratio, until the solvent front was 8 cm from the base line. The chromatogram was dried and immersed in a solution prepared with 0.1 ml saturated aqueous AgNO₃ and 20 ml acetone for 60 s, before being

transferred to a solution of ethanol containing 0.5 M NaOH until brown spots (calystegines) appeared on the white chromatogram (detection limit of about 0.5 µg of calystegines). Finally, the chromatogram was fixed in a bath of photographic fixative G 345 (Agfa-Gevaert AG, Dübendorf, Switzerland). After each bath, the chromatogram was dried using a hair dryer. The purity of each extract was checked by comparison with a calystegine standard obtained from D. Tepfer (INRA Versailles, France) according to published protocols [1]. Calystegine concentration in the extracts was adjusted to 2 µg µl⁻¹ prior to use in degradation assays.

Biological analysis of extracted calystegines was carried out using *S. meliloti* strain Rm41 and its derivative Rm41-Ca1, which had been cured of the *cac* plasmid pRme41a and was unable to catabolise calystegines [1]. The strains were grown in liquid tryptone-yeast extract (TY [13]) at 27°C with shaking (120 rpm) until cultures reached an optical density of 1 at 600 nm (equivalent to approximately 7 × 10⁹ colony-forming units (CFU) ml⁻¹; late exponential phase). The cells were washed and resuspended in fresh M9 medium without carbon source [14]. Calystegine degradation was assayed in reaction mixtures (final volume 208 µl) consisting of 200 µl of M9 medium without carbon source, 8 µl of calystegine extract or calystegine standard (final concentration, 77 µg ml⁻¹) and the test bacterium (cell density, 7 × 10⁷ CFU ml⁻¹). After incubation for 24 h at 27°C with shaking (120 rpm), the samples were centrifuged (10 min, 13 000 × g) and the supernatant evaporated to dryness in vacuo. The residues were taken up in 8 µl sterile distilled water. A 2-µl aliquot was tested

for the presence of calystegines by thin-layer chromatography, as described above. For each strain, seven assays were performed with extracted calystegines and seven assays with calystegine standard.

2.4. Bioassay for calystegine degradation by rhizosphere microbiota

To extract rhizosphere microorganisms, samples of about 0.25 g of root (and closely adhering soil) were transferred each into a 50-ml Erlenmeyer flask containing sterile distilled water (sample:water ratio of 1:100 w/v) and the flasks were shaken for 15 min at 350 rpm. Purified calystegines (8-µl aliquots) were added to 200 µl of rhizosphere extract (final concentration, 77 µg ml⁻¹) and the samples (containing microorganisms extracted from 2 mg of root material) were incubated at 27°C with shaking (120 rpm) for 24 h. They were then centrifuged at 13 000 × g for 10 min and the supernatant was evaporated to dryness in vacuo. The residue was taken up in 8 µl of sterile distilled water and 2 µl analysed for the presence of calystegines by thin-layer chromatography. The absence of calystegines indicated that the rhizosphere sample studied harboured microorganisms with the capacity to degrade these alkaloids and such roots were scored as being positive for microbial calystegine degradation (i.e. MCD roots). Since the detection limit of the chromatography was about 0.5 µg of calystegines and 2 µl of the 8 µl was tested, it means that the detection limit in the bioassay was about 2 µg of calystegines and that at least 14 µg of the 16 µg of calystegines used in the bioassay (i.e. 88%) had to be degraded before a root was rated MCD.

Table 1
Main properties of the soils^a used in the microcosm experiments

	Eschikon	Reckenholz	Mürren
Crop at sampling	maize	maize	potato
Texture	loam	loam	sandy clay loam
Clay (%)	15	21	27
Silt (%)	42	32	23
Sand (%)	43	47	50
pH _{H₂O}	7.0	7.3	6.9
Cation-exchange capacity (cmol kg ⁻¹)	32.7	18.8	49.0
CaCO ₃ (%)	0.8	0	0
Organic matter (%)	3.5	3.0	12.8
N (%)	0.16	0.27	0.90
Altitude (m) above sea level	530	442	1590

^aAll soils were sampled from the surface horizon of cropped cambisols.

To demonstrate that the absence of calystegines in samples could not have resulted from physico-chemical interactions (adsorption) between the alkaloid and soil particles, the three soils used in microcosm experiments in this study (Table 1) were each suspended in sterile distilled water (1, 3, 30 and 300 mg soil ml⁻¹). Purified calystegines (8- μ l aliquots) were added to 200 μ l of each suspension. The samples were vigorously shaken at 1000 rpm for 1.5 h and checked for the presence of calystegines, as described above. Three replicates were studied per treatment. Calystegines were clearly detected in all samples from each non-sterile soil, even when soil was used at a rate as high as 300 mg ml⁻¹ (data not shown). Therefore, the presence of soil particles in rhizosphere extracts could not have resulted in false-positive results in the bioassay.

For validation of the bioassay, *S. meliloti* strain Rm41 and its derivative Rm41-Ca1 were prepared as described above, except that cells were washed and resuspended in sterile distilled water. The cell suspensions were diluted in sterile distilled water, as needed. Samples (5 ml each) of rhizosphere extracts obtained from *C. sepium* plants sampled at Eschikon (described in Section 2.6) were sterilised by autoclaving. The bioassay was as described above, except that 190 μ l of extract was used. Inoculation was performed with 10 μ l of cell suspension of strains Rm41 or Rm41-Ca1, and final cell densities were 5×10^2 to 5×10^7 CFU ml⁻¹ for strain Rm41 and 5×10^6 or 5×10^7 CFU ml⁻¹ for strain Rm41-Ca1. The assay was then carried out as described above. Calystegine degradation was studied for non-sterile rhizosphere extract, as well as sterilised rhizosphere extract inoculated with strains Rm41 or Rm41-Ca1, and seven replicates were used per treatment.

An experiment was done to determine changes in bacterial populations during the 24-h calystegine degradation bioassay. First, the bioassay was performed using non-sterile rhizosphere extracts obtained from *Z. mays* (15 samples) or *C. sepium* (15 samples) grown in Eschikon soil. Total numbers of culturable aerobic bacteria were determined by colony counts on 10% tryptic soy agar. Second, the bioassay was carried out with sterilised rhizosphere extract of *Z. mays* (five samples) or *C. sepium* (five samples) inoculated with *S. meliloti* Rm41 at

7.5×10^6 CFU ml⁻¹. Culturable cells of the strain were enumerated by colony counts on TY agar. All plates were incubated at 27°C for 3 days and the colonies counted.

2.5. Survey of the proportion of MCD *Z. mays* roots in the field

Five *Z. mays* fields were chosen at random in a 6 \times 8-km region east of Zürich in July 1996. In each field, a 5-m² area free of *C. sepium* was selected and 10 *Z. mays* plants were sampled. Root segments were collected from the surface horizon, at a depth of approximately 10 cm below the soil surface (one sample of about 0.25 g of root plus closely adhering soil per plant). Each sample was assayed for calystegine degradation, as described above. For each field, the percentage of MCD roots was calculated based on results obtained with the 10 samples.

2.6. Proportion of MCD *Z. mays* roots in plots with and without *C. sepium* at two field locations

One *Z. mays* field at Eschikon [15] and one at Reckenholz [16] were chosen, both soils corresponding to cambisols and both with patchy *C. sepium* infestation. On 9 July 1996, 10 *Z. mays* plants were chosen at random at each site from 5-m² plots infested or not infested with *C. sepium*. Root segments (one root segment per plant) from these plants, and from *C. sepium* plants in both infested plots, assayed for calystegine degradation, as described above. The whole experiment was repeated on 24 July 1996 using the same plots.

2.7. Origin of calystegine-degrading rhizosphere microorganisms

The proportion of MCD roots of *Z. mays* and *C. sepium* grown in autoclaved soil microcosms was investigated to determine whether calystegine-degrading microorganisms are seed-borne. Surface soil (Table 1) from Eschikon plots infested with *C. sepium* (see Section 2.6) was passed through a 5-mm mesh screen and transferred into 300-ml Erlenmeyer flasks (65 g soil per flask). The flasks were autoclaved for 20 min at 121°C on two occasions that were 2 days apart. Seeds of *C. sepium* were collected aseptically

from intact fruit capsules and scarified with a sterile scalpel in a sterile hood. Likewise, seeds of *Z. mays* were used without surface disinfection. All seeds were germinated on 0.85% water agar at 24°C in the dark for 3 days before planting (one seedling per microcosm). The experiment was also performed using *C. sepium* rhizome instead of seed, since the species can also propagate vegetatively. Rhizome pieces corresponding to two nodes (about 4 cm in length) were washed with sterile distilled water to remove soil particles prior to planting. The flasks were put in a growth chamber with 16 h of light (22°C) and 8 h of dark (18°C). The water content of the soil was approximately 20% (w/w) throughout the experiment. Destructive sampling was carried out at 1, 7 and 21 days after planting and the proportion of MCD root systems was determined. The experiment followed a fully randomised design and five replicates (i.e. five flasks) of each treatment were studied at each sampling time. The experiment was repeated on three independent occasions.

2.8. Proportion of MCD roots of *Z. mays* and

C. sepium in microcosms prepared with soil from fields with calystegine-producing plants

To gain insight into the ability of calystegine-degrading microorganisms to colonise the rhizosphere of calystegine-negative (*Z. mays*) and calystegine-positive (*C. sepium*) plants, microcosm experiments were performed using soil (Table 1) from field sites infested with *C. sepium* (i.e. Eschikon) or free of *C. sepium* but grown with the calystegine-positive plant *S. tuberosum* (potato) (i.e. Mürren). The microcosms were prepared as described above, except that soil was not sterilised. The seeds were surface-disinfected to remove any possibility that calystegine-degrading microorganisms associated with the seeds could have colonized the rhizosphere. This was achieved by immersing seeds of *C. sepium* (after scarification in 95% H₂SO₄ for 60 min) and *Z. mays* successively in 5% NaOCl for 15 min and 10% H₂O₂ for 15 min. Seeds were germinated on 0.85% water agar at 24°C in the dark for 3 days prior to planting (one seedling per microcosm). The experiment was not performed with rhizomes of *C. sepium* because an effective method for surface disinfection of rhizome is not available. The water content of the soil was approximately 20%

(w/w) throughout the experiment. Growth chamber conditions, sampling characteristics and determinations were as described above. A randomised design was used and each treatment was studied in five replicates at each sampling time. The experiment was repeated three times. Similar results were obtained in each of the three repeated experiments (as indicated by non-parametric Kruskal-Wallis statistics) and all data were therefore pooled for statistical analyses.

2.9. Data analysis

The field survey was not replicated and therefore the observations were not analysed statistically. In the field experiment, non-parametric Kruskal-Wallis statistics were used to test the effects of sampling time (9 July 1996 and 24 July 1996), field site (Eschikon and Reckenholz), and plants (*C. sepium*, *Z. mays* with and without *C. sepium*). Mann-Whitney *U*-tests were used for pairwise comparisons between the three plant treatments (i.e. *C. sepium*, *Z. mays* in plots with *C. sepium*, *Z. mays* in *C. sepium*-free plots). Data obtained in non-sterile soil microcosms were analysed by Kruskal-Wallis statistics to determine the effects of soil origin (Eschikon and Mürren) and plant species (*Z. mays* and *C. sepium*). Mann-Whitney *U*-tests were used for pairwise comparisons between the four treatments (*Z. mays* in Eschikon soil and in Mürren soil, and *C. sepium* in Eschikon soil and in Mürren soil). All analyses were performed at $P=0.05$ and Systat 5.05 (SPSS Inc., Evanston, IL) was used.

3. Results and discussion

3.1. Calystegine extraction

Several methods have been proposed to extract calystegines from the roots of *C. sepium* or other plant species [1,2,6,12]. In the current work, solid-phase extraction columns were exploited to achieve rapid (1 h) extraction of calystegines from *C. sepium* roots. One extraction carried out using 5 g of plant material yielded 400–500 µg of purified calystegines. The efficacy of the extraction was similar to that achieved by Dräger [12], who obtained about 100 µg of calystegines per g of fresh root.

The purity of the calystegine extracts obtained here was similar to that of the calystegine standard produced as described by Tepfer et al. [1], as indicated by thin-layer chromatography (data not shown). *S. meliloti* Rm41 degraded the purified calystegines obtained in the current work as well as the calystegine standard, whereas its Cac^- derivative Rm41-Ca1 did not catabolise purified calystegines or the calystegine standard.

3.2. Effectiveness of the bioassay proposed to study calystegine degradation by rhizosphere microbiota

A majority of rhizosphere extracts from rhizomes of *C. sepium* sampled at Eschikon degraded calystegines in the bioassay proposed here. In contrast, calystegine degradation did not take place when the bioassay was performed with rhizosphere extracts sterilised by autoclaving, indicating microbial calystegine degradation in the original bioassay.

When sterilised rhizosphere extracts were inoculated with a cell suspension of *S. meliloti* Rm41 prior to conducting the bioassay, calystegine degradation was observed in treatments where the strain was introduced at 5×10^6 or 5×10^7 CFU ml⁻¹, but not when at $\leq 5 \times 10^5$ CFU ml⁻¹. However, full calystegine degradation took place in all treatments with strain Rm41 when assays were incubated for 4 days instead of 24 h, regardless of inoculation levels. Calystegine degradation did not take place when sterilised extracts were inoculated with the Cac^- strain Rm41-Ca1, even after incubation for 4 days. These results suggest that complete calystegine degradation requires the presence of calystegine-degrad-

ing microorganisms at high cell numbers, and that these calystegine-degrading microorganisms could grow during the bioassay. Indeed, the population size of culturable cells of strain Rm41 increased by two orders of magnitude during the bioassay, regardless of whether rhizosphere extracts were obtained from *C. sepium* or *Z. mays* (Table 2). It is possible that the efficiencies of calystegine degradation by strain Rm41 and the resident soil microorganisms differ. However, the finding that full calystegine degradation by *S. meliloti* Rm41 in the 24-h bioassay took place only when the strain was added at levels of 5×10^6 CFU ml⁻¹ (corresponding to 5×10^8 CFU (g root)⁻¹) or higher suggests that the calystegine degradation bioassay may be useful to identify rhizospheres comprising a significant microbial community displaying this catabolic capacity.

Bacterial growth took place also when the bioassay was performed using non-sterile rhizosphere extracts of either plant, as indicated by the increase in colony counts of the resident aerobic bacteria during the bioassay (Table 2). Similar numbers of resident culturable aerobic bacteria were obtained whether the samples scored MCD or not (data not shown), suggesting that bacterial growth did not depend on calystegine degradation in this bioassay. Counts of resident culturable bacteria were lower than CFUs of strain Rm41 (Table 2), probably because nutrient availability was higher in autoclaved soil.

3.3. MCD roots of a calystegine-negative plant (*Z. mays*) can be found in the field

The calystegine degradation bioassay was used to study *Z. mays* plants sampled at five field sites (Figs.

Table 2

Colony counts^a of microorganisms in rhizosphere extracts from *C. sepium* or *Z. mays* grown in Eschikon soil at the beginning and the end of the 24-h calystegine degradation bioassay

Microorganisms present	Plant species	Colony counts (log CFU ml ⁻¹)	
		0 h	24 h
Resident microorganisms	<i>C. sepium</i>	5.6 ± 0.3	7.8 ± 0.2
	<i>Z. mays</i>	6.0 ± 0.5	7.5 ± 0.1
<i>S. meliloti</i> strain Rm41 ^b	<i>C. sepium</i>	5.8	8.6 ± 0.2
	<i>Z. mays</i>	5.8	8.6 ± 0.1

^aMeans ± S.D. are shown. They were calculated after pooling all data from three independent experiments. The plant species had no influence on colony counts of the resident microorganisms (at each sampling), or on colony counts of strain Rm41 at 24 h. Colony counts of the resident microorganisms were not influenced by the MCD status of roots.

^bStrain Rm41 was added to sterilised rhizosphere extracts at the start of the experiment.

1 and 2). MCD *Z. mays* roots were found at each location, and their proportion comprised between 20% (Pfäffikon) and 80% (Uster, Seegräben and Auslikon). Overall, calystegine-degrading microorganisms at levels sufficient to achieve full degradation of the alkaloids in the bioassay were present in 32 of the 50 rhizosphere samples studied. *C. sepium*, the main calystegine-producing plant known in this agrosystem, was not found at any of the five sites.

These results were not expected as *Z. mays* does not produce calystegines. Tepfer et al. [9] did not find any bacterial isolate capable of degrading calystegines in the rhizosphere of plants other than calystegine producers. Similarly, Goldmann et al. [8] observed that 11 of 51 bacterial isolates obtained from the rhizosphere of *C. sepium* or *C. arvensis* could degrade calystegines, whereas no calystegine-degrading bacterium was obtained from the rhizosphere of calystegine-negative plants. However, the number of strains investigated in these two studies was limited, because each bacterial isolate had to be tested indi-

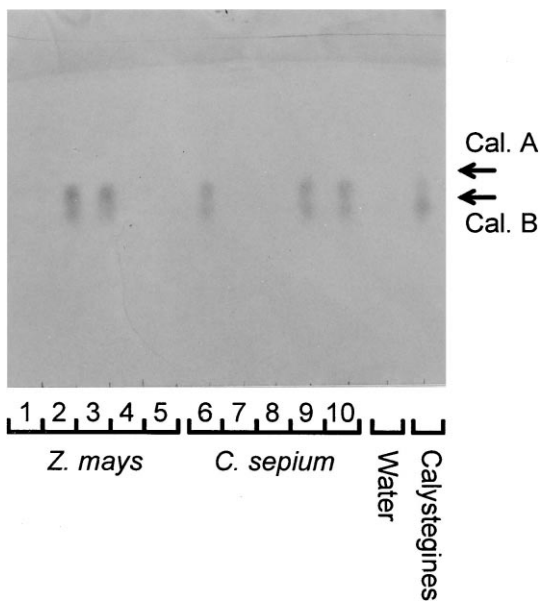


Fig. 1. Thin-layer chromatogram for determination of calystegines in the calystegine degradation bioassay. Calystegines (Cal. A and Cal. B) are seen in the calystegine control and in the bioassay carried out with root samples 2, 3 (*Z. mays*) and 6, 9, 10 (*C. sepium*). As control, the bioassay was done also without the addition of calystegines ('Water'). Root samples 1, 4, 5 (*Z. mays*) and 7, 8 (*C. sepium*) were scored as MCD as no calystegines were seen.

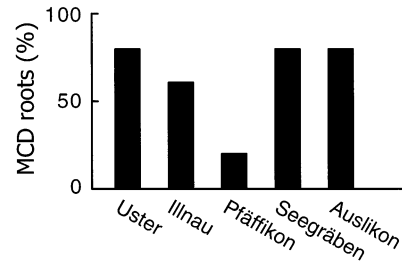


Fig. 2. Proportion of MCD *Z. mays* roots sampled at various locations in the region of Zürich, Switzerland. A plot free of *C. sepium* was chosen at random at each location and one root sample was assayed for each of 10 plants collected at random in each plot. Overall, the proportion of MCD *Z. mays* roots in the survey was 64%.

vidually for calystegine degradation. Indeed, the model strain for calystegine degradation is *S. meliloti* Rm41 [1], which was isolated from a nodule of the calystegine-negative plant *Medicago sativa* L. and not from *C. sepium* [17]. The fact that the proportion of MCD *Z. mays* roots was high (Fig. 2) suggests that microorganisms capable of calystegine degradation are widespread in soil. Based on the results obtained with strain Rm41 in the current bioassay, it can be estimated that calystegine-degrading microorganisms may represent as much as a few percent of all culturable rhizosphere bacteria for roots scored as MCD. From this estimation, it is conceivable that the number of isolates tested in previous studies (less than 100) was not sufficient to detect calystegine-degrading bacteria in the rhizosphere of calystegine-negative plants.

3.4. Presence of *C. sepium* in the field causes a higher proportion of MCD roots of *Z. mays*

The effect of *C. sepium* infestation on the proportion of MCD *Z. mays* roots was assessed in field experiments where adjacent plots free of *C. sepium* or infested with *C. sepium* were available. Whereas data obtained at Eschikon were similar to those from Reckenholz, sampling time had a strong influence on the proportions of MCD roots (Fig. 3). Apparently, calystegine-degrading microorganisms became favoured for colonisation of the rhizosphere of *Z. mays* by the second sampling, perhaps as a consequence of specific climatic conditions or changes in exudation patterns of *Z. mays* roots linked to plant

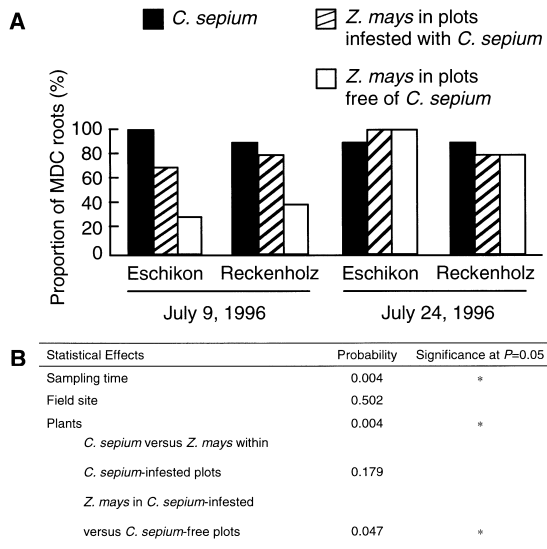


Fig. 3. Proportion (%) of MDC roots of *Z. mays* and *C. sepium* in field experiments carried out at Eschikon and at Reckenholz (A). *Z. mays* was sampled from plots infested with *C. sepium* and from plots without bindweed. The statistical effect of the experimental factors were studied by Kruskal-Wallis and Mann-Whitney *U* statistics (B).

development between the two samplings. Since *Z. mays* is calystegine-negative, this effect appears to be independent of the presence of calystegines in the rhizosphere. Overall, the proportion of MDC *Z. mays* roots was statistically higher in plots infested with the bindweed than in those without *C. sepium* (Fig. 3), obviously a result contributed by data from the first sampling. In *C. sepium*-infested plots, *C. sepium* and *Z. mays* displayed a similar proportion of MDC roots.

The presence of *C. sepium* plants in these plots implies that calystegines could be released into soil as part of root exudates and/or in decaying roots of *C. sepium*. The presence of calystegines in soil organic matter may sustain the presence of calystegine-degrading microorganisms at significant population levels in non-rhizosphere soil and contribute to their subsequent colonisation of the rhizosphere of a calystegine-negative plant like *Z. mays*. Unfortunately, no information is available on the persistence of calystegines released into soil after the death of roots. Other types of alkaloids have been shown to persist in soil and become adsorbed to soil particles [18]. The ability of bacteria to catabolise a specific com-

pound present in root exudates, e.g. opine, rhizopine or flavonoids, is thought to improve their growth [19,20] or competitiveness in the rhizosphere [21–23]. Calystegines may have a wider significance by favouring calystegine-degrading microorganisms not only in the rhizosphere of calystegine-producing plants but perhaps also in bulk soil containing residual calystegines.

3.5. Calystegine-degrading rhizosphere microorganisms are not seed-propagated

No root of *C. sepium* or *Z. mays* was MCD when autoclaved Eschikon soil was sown with seeds. Since the majority of roots of either plant species were MCD at the Eschikon field site (Fig. 3), this result indicates that the rhizosphere microorganisms responsible for the ability of rhizosphere extracts to degrade calystegines do not belong to the microbiota naturally associated with the seed. Indeed, a significant proportion of *C. sepium* samples were MCD when autoclaved Eschikon soil was planted with washed rhizomes of the plant (i.e. $25 \pm 3\%$, $50 \pm 3\%$ and $35 \pm 17\%$ at 1, 7 and 21 days after planting, respectively; results pooled from three independent experiments). Furthermore, this indicates that calystegine-degrading microorganisms can be present in close association with the surface of the *C. sepium* rhizome.

3.6. High proportions of MDC roots of *Z. mays* and *C. sepium* grown in microcosms prepared with soil from fields where calystegine-producing plants are present

In soil microcosms, a significant proportion of seedlings were already MCD 1 day after planting of axenic seedlings in Eschikon or Mürren soil, regardless of whether *C. sepium* or *Z. mays* was studied (Fig. 1, Table 3). This suggests that calystegine-degrading microorganisms were present at significant numbers in soil before the introduction of the plants, as suggested earlier for soils from Eschikon and Reckenholz (see Section 3.4). The presence of microorganisms capable of calystegine degradation in *C. sepium*-free soil from Mürren (1600 m above sea level) cannot be explained by earlier *C. sepium* infestation since this plant species does not grow at this

Table 3

Proportion (%)^a of roots of *C. sepium* and *Z. mays* with a microbial rhizosphere community capable of calystegine degradation (i.e. MCD roots) in natural soil microcosms prepared with Eschikon soil (site infested with *C. sepium*) or Mürren soil (site cropped with *S. tuberosum*)

Soil origin	Plant species ^b	Sampling time		
		Day 1	Day 7	Day 21
Eschikon	<i>C. sepium</i>	33 ± 12 a ^c	47 ± 12 ab	58 ± 8 a
	<i>Z. mays</i>	40 ± 0 a	13 ± 12 a	18 ± 17 b
Mürren	<i>C. sepium</i>	53 ± 12 a	60 ± 20 b	58 ± 22 a
	<i>Z. mays</i>	53 ± 42 a	67 ± 31 b	43 ± 12 ab
Statistical effects	Soil origin	NS ^d	*	NS
	Plant species	NS	NS	*

^aMeans ± S.D. are shown.

^bSeeds of *C. sepium* were scarified with H₂SO₄ before surface disinfection. Seeds of *Z. mays* and *C. sepium* were surface-disinfected with 5% NaOCl and 10% H₂O₂.

^cAt each sampling time, the statistical relationships between the four treatments is shown with the letters a and b ($P=0.05$).

^dNS, not significant; *, significant at $P=0.05$.

altitude in Switzerland. However, the Mürren soil has been cropped continuously with *S. tuberosum*, another calystegine-producing plant species [5].

In Mürren soil, the proportion of MCD roots remained similar for *C. sepium* and *Z. mays* at the other two samplings carried out (Table 3). In contrast, the proportion of MCD *Z. mays* roots in Eschikon soil decreased significantly by day 7 and did not change from days 7 to 21, whereas the proportion of MCD roots of *C. sepium* increased somewhat with time. Consequently, MCD roots were three times more frequent for *C. sepium* than for *Z. mays* at 21 days after sowing. Obviously, calystegine-degrading microorganisms were more competitive for colonisation of *C. sepium* than *Z. mays* in this soil. The reason why this did not take place in Mürren soil remains to be determined. Perhaps the amount of calystegines in a soil under continuous, intensive *S. tuberosum* cultivation (Mürren) was higher than that resulting from natural *C. sepium* infestation (Eschikon), because of the amount of calystegine-containing crop residues produced in the case of potato cultivation. Consequently, in the rhizosphere, the calystegine status of the plants was more influential in Eschikon soil than in Mürren soil.

3.7. Significance of calystegines and calystegine degradation capacity for soil microorganisms

Microorganisms with the capacity to degrade or-

ganic substrates specific for certain plant roots are considered to be favoured for colonisation of the rhizosphere of these plants [19–23], including *C. sepium* [8–10]. However, MCD roots of *Z. mays*, a calystegine-negative plant, were commonly found. Apparently, calystegine-degrading microorganisms were neither restricted to the rhizosphere of calystegine-producing plants nor impaired for colonisation of the rhizosphere of calystegine-negative plants. So far, only rhizobia and pseudomonads have been identified among rhizosphere isolates capable of calystegine degradation [8,9]. Calystegine degradation by bacteria other than *S. meliloti* Rm41 does not involve the *cac* genes, as in the latter strain [8,9], raising the possibility that the rhizosphere microbiota involved in calystegine degradation is highly diverse in terms of both microbial taxonomy and catabolic pathways.

The occurrence of MCD roots of *Z. mays* and *C. sepium* shortly (1 day) after introduction of axenic seedlings into natural soil suggests that calystegine-degrading microorganisms were present at significant population levels in soil, perhaps because of the presence of calystegines in soil organic matter following the death of roots containing these alkaloids. If this were the case, it could provide an explanation for the higher proportion of MCD *Z. mays* roots in field plots infested with *C. sepium* compared with plots not infested. In this context, the ability of symbiotic bacteria such as *S. meliloti* Rm41 to catabolise ca-

lystegines would constitute not only an adaptation to alternative, non-symbiotic host plants but probably also a selective advantage for survival in soil in the absence of roots (i.e. in bulk soil).

Acknowledgments

We are indebted to D. Tepfer (INRA Versailles, France) for kindly providing calystegine standard, root culture of transformed *C. sepium* and strains Rm41 and Rm41-Ca1. We thank J. von Allmen for providing soil from Mürren, H.P. Pfirter for discussions and technical assistance, and U. Schenk and M. Hildman for technical assistance. This work was supported in part by the COST Action 816 (European cooperation in the field of scientific and technical research).

References

- [1] Tepfer, D., Goldmann, A., Pamboukdjian, N., Maille, M., Lepingle, A., Chevalier, D., Dénarié, J. and Rosenberg, C. (1988) A plasmid of *Rhizobium meliloti* 41 encodes catabolism of two compounds from root exudate of *Calystegia sepium*. *J. Bacteriol.* 170, 1153–1161.
- [2] Asano, N., Kato, A., Yokoyama, Y., Miyauchi, M., Yamamoto, M., Kizu, H. and Matsui, K. (1996) Calystegin N₁, a novel nortropane alkaloid with a bridgehead amino group from *Hyoscyamus niger*: structure determination and glycosidase inhibitory activities. *Carbohydr. Res.* 284, 169–178.
- [3] Asano, N., Oseki, K., Tomioka, E., Kizu, H. and Matsui, K. (1994) N-containing sugars from *Morus alba* and their glycosidase inhibitory activities. *Carbohydr. Res.* 259, 243–255.
- [4] Asano, N., Kato, A., Oseki, K., Kizu, H. and Matsui, K. (1995) Calystegines of *Physalis alkekengi* var. *francheti* (Solanaceae): Structure determination and their glycosidase inhibitory activities. *Eur. J. Biochem.* 229, 369–376.
- [5] Nash, R.J., Rothschild, M., Porter, E.A., Watson, A.A., Waight, R.D. and Waterman, P.G. (1993) Calystegines in *Solanum* and *Datura* species and the death's-head hawk-moth (*Acherontia atropus*). *Phytochemistry* 34, 1281–1283.
- [6] Todd, F.G., Stermitz, F.R., Schultheis, P., Knight, A.P. and Traub-Dargatz, J. (1995) Tropane alkaloids and toxicity of *Convolvulus arvensis*. *Phytochemistry* 39, 301–303.
- [7] Molyneux, R.J., Pan, Y.T., Goldmann, A., Tepfer, D. and Elbein, D.A. (1993) Calystegines, a novel class of alkaloid glycosidase inhibitors. *Arch. Biochem. Biophys.* 304, 81–88.
- [8] Goldmann, A., Message, B., Tepfer, D., Molyneux, R.J., Duclos, O., Boyer, F., Pan, Y.T. and Elbein, A. (1996) Biological activities of the nortropane alkaloid, calystegine B₂ and analogs: structure-function relationships. *J. Nat. Prod.* 59, 1137–1142.
- [9] Tepfer, D., Goldmann, A., Fleury, F., Maille, M., Message, B., Pamboukdjian, N., Boivin, C., Dénarié, J., Rosenberg, C., Lallemand, J.Y., Descoins, C., Charpin, I. and Amarger, N. (1988) Calystegins, nutritional mediators in plant-microbe interactions. In: *Molecular Genetics of Plant-Microbe Interactions* (Palacios, R. and Verma, D.P.S., Eds.), pp. 139–144. APS Press, St. Paul, MN.
- [10] Boivin, C., Malpica, C., Rosenberg, C., Goldmann, A., Fleury, V., Maille, M., Message, B., Pamboukdjian, N. and Tepfer, D. (1990) Catabolism of the plant secondary metabolites calystegins and trigonelline by *Rhizobium meliloti*. *Symbiosis* 9, 147–154.
- [11] Jung, G. and Tepfer, D. (1987) Use of genetic transformation by the Ri T-DNA of *Agrobacterium rhizogenes* to stimulate biomass and tropane alkaloid production in *Atropa belladonna* and *Calystegia sepium* roots grown in vitro. *Plant Sci.* 50, 145–151.
- [12] Dräger, B. (1995) Identification and quantification of calystegines, polyhydroxyl nortropane alkaloids. *Phytochem. Anal.* 6, 31–37.
- [13] Beringer, J.E. (1974) R-factor transfer in *Rhizobium leguminosarum*. *J. Gen. Microbiol.* 84, 188–198.
- [14] Maniatis, T., Fritsch, E.F. and Sambrook, J. (1982) *Molecular Cloning: A Laboratory Manual*. Cold Spring Harbor Laboratory, Cold Spring Harbor, NY.
- [15] Défago, G., Berling, C.H., Hengeler, S., Hungerbühler, W., Kern, H., Schleppi, P., Stutz, E.W. and Zürrer, M. (1987) Survie d'un *Pseudomonas fluorescens* dans le sol et protection du blé contre des maladies d'origine fongique. *Schweiz. Landw. Fo.* 26, 155–160.
- [16] Nievergelt, J. (1991) Die wägbaren Lysimeter der Eidgenössischen Forschungsanstalt für landwirtschaftlichen Pflanzenbau Zürich-Reckenholz. *Landw. Schweiz* 4, 535–536.
- [17] Ördögh, F. and Szende, K. (1961) Temperate bacteriophages isolated from *Rhizobium meliloti*. *Acta Microbiol. Hung.* 8, 65–71.
- [18] Starr, R.I., Timm, R.W., Doxtader, G., Hurlbut, D.B., Volz, S.A. and Goodall, M. (1995) Sorption and aerobic biodegradation of strychnine alkaloid in various soil systems. *J. Agric. Food Chem.* 44, 1603–1608.
- [19] Hartwig, U.A., Joseph, C.M. and Phillips, D.A. (1990) Flavonoids released naturally from alfalfa seeds enhance growth rate of *Rhizobium meliloti*. *Plant Physiol.* 95, 797–803.
- [20] Guyon, P., Petit, A., Tempé, J. and Dessaux, Y. (1993) Transformed plants producing opines specifically promote growth of opine-degrading agrobacteria. *Mol. Plant-Microbe Interact.* 6, 92–98.
- [21] Murphy, P.J., Wexler, W., Grzemeski, W., Rao, J.P. and Gordon, D. (1995) Rhizopines – their role in symbiosis and competition. *Soil Biol. Biochem.* 27, 525–529.
- [22] Oger, P., Petit, A. and Dessaux, Y. (1997) Genetically engineered plants producing opines alter their biological environment. *Nature Biotechnol.* 15, 369–372.
- [23] Savka, M.A. and Farrand, S.K. (1997) Modification of rhizobacterial populations by engineering bacterium utilization of a novel plant-produced resource. *Nature Biotechnol.* 15, 363–368.